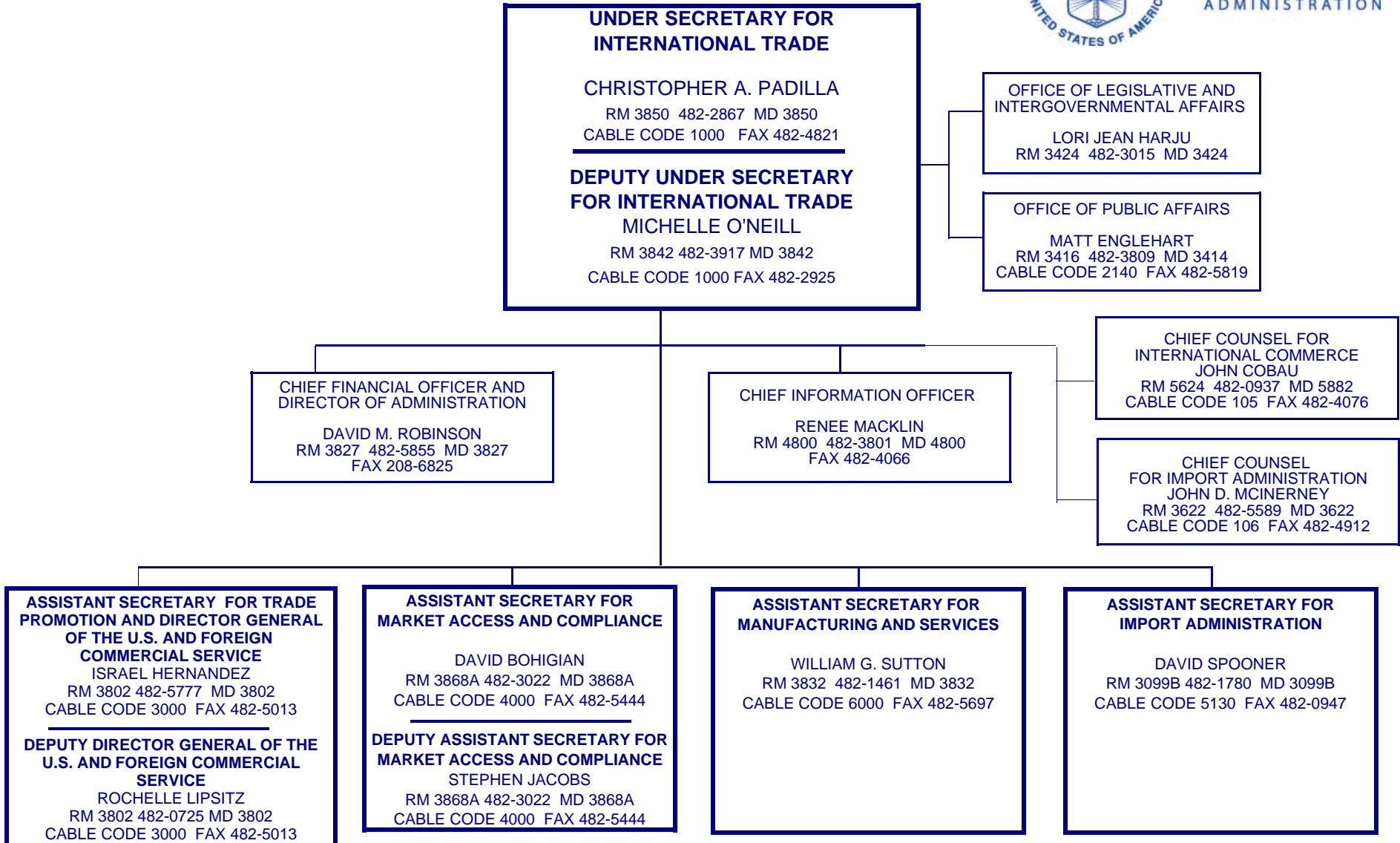


**U.S. DEPARTMENT OF COMMERCE
INTERNATIONAL TRADE ADMINISTRATION
WORK REFERENCE CHART**



**INTERNATIONAL
TRADE
ADMINISTRATION**



NOTE: This is a working document. Some persons are designated as acting pending the completion of personnel actions. This chart depicts only persons for which personnel actions have been submitted. The most up-to-date chart can be accessed via the CFO Website (<http://ita.doc.gov/ooms/itawrc.htm>).

SOURCE: Office of Organization and Management Support
OCTOBER 2008