

OnTheMap Version 3

Sample Work Area Profile Analysis

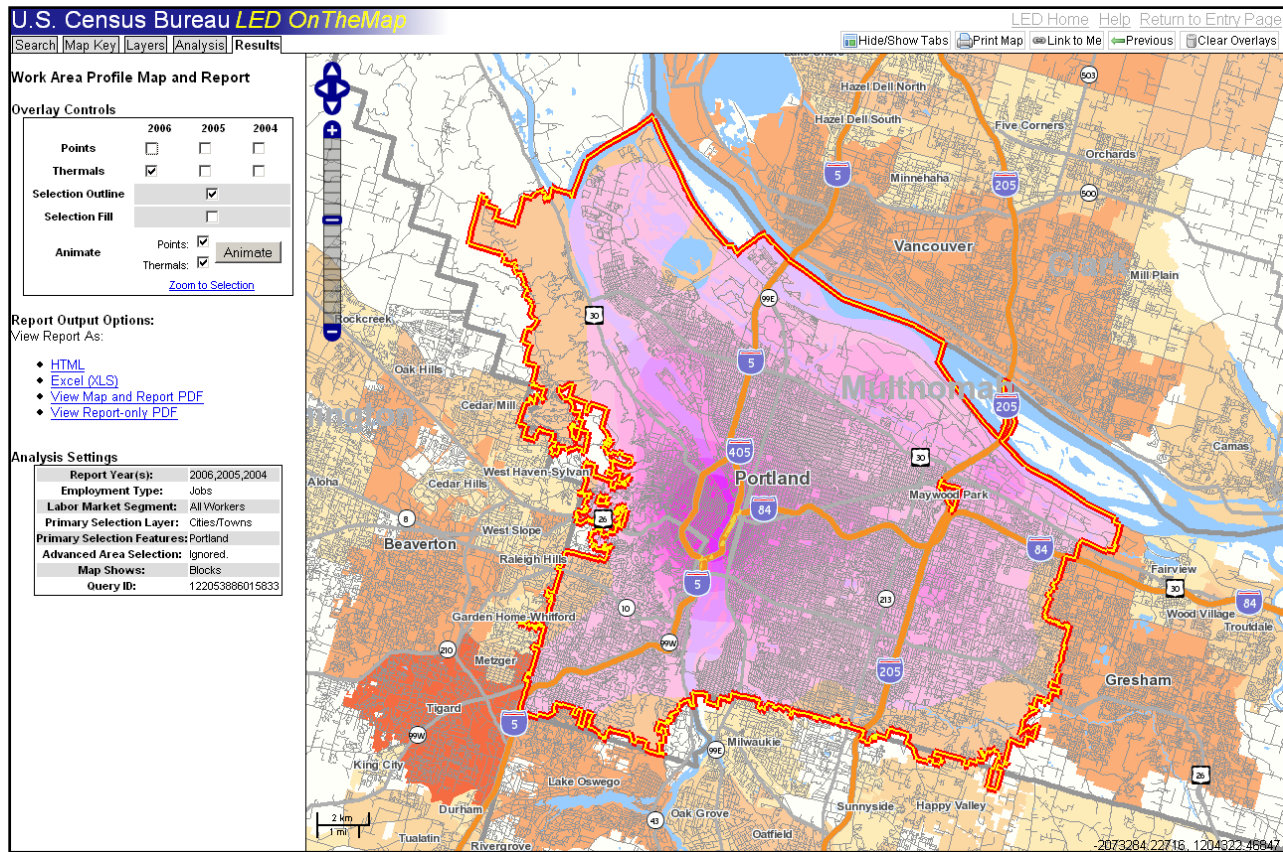
Local Employment Dynamics

All About Jobs

What are the distribution and characteristics of workers* employed in Portland, Oregon?

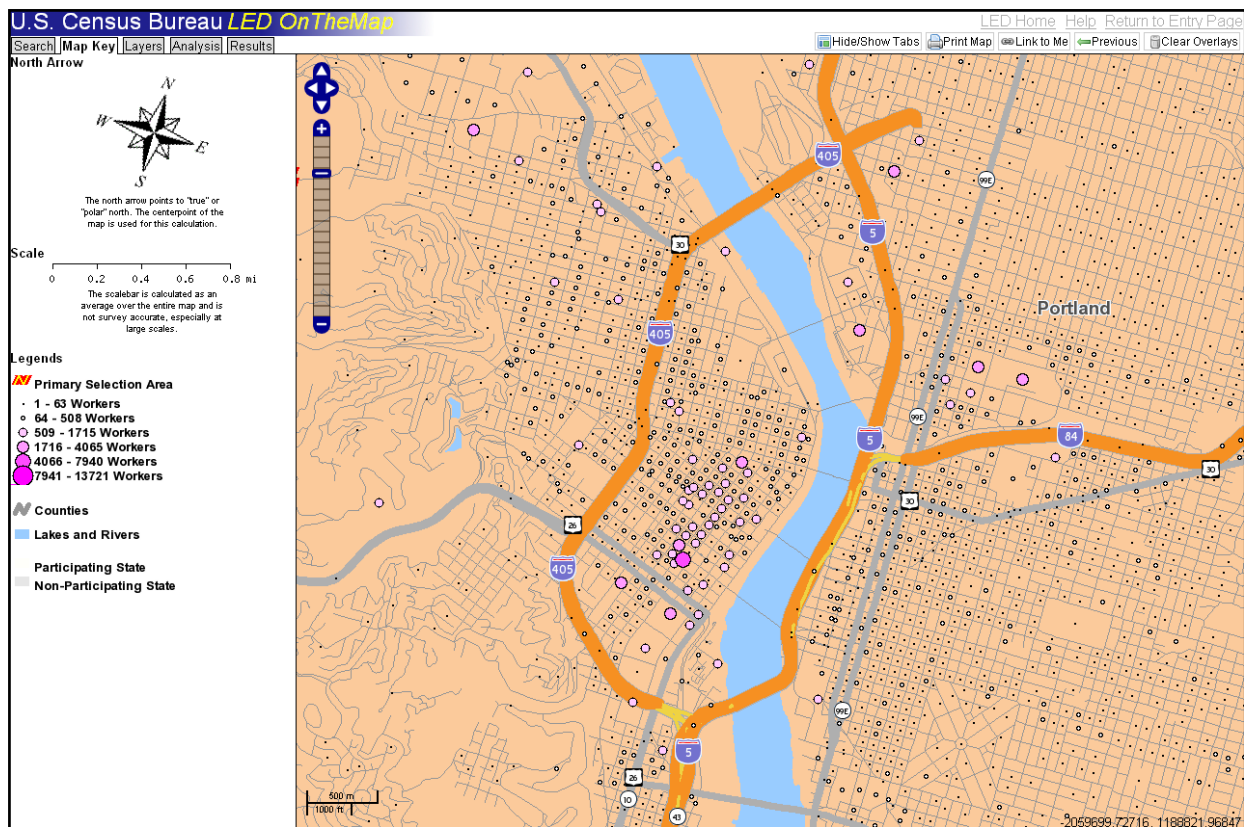
* Represented as primary jobs covered under the state unemployment insurance system.

1. Go to **Quick Links** at <http://lehd.did.census.gov> and choose **OnTheMap Version 3**.
2. Enter **Portland** in the Place Name text box and click **Enter**.
3. Select **Portland, OR** under the Cities/Towns heading in the Control Panel on the left.
4. After the map of Portland appears, click on the **Analysis** tab from the top of the Control Panel on the left.
5. Select **Workplace Area**, 2006, 2005, and 2004 under **Year(s)**, **Primary Jobs**, and **All Workers** from the Data Settings step. Click **Next** near the top of the Control Panel to proceed to the next step.
7. Click on **Layer** from the available Selection Tools. Keep the default layer as “Cities/Towns” and keep the **Point(s)** method selected. Using your mouse, simply left-click once inside the Portland city boundary.
8. The Portland city boundary should be highlighted in blue in the map viewer. Click **Next** near the top of the Control Panel (the selection outline will disappear).
9. The third step, Advanced Area Selection, is used for more advanced analyses. Keep the default **Skip this Step** setting and click **Next**.
10. In the fourth step, called Map Overlay/Report, keep the default setting – **Work Area Profile Analysis**. Near the top of the Control Panel, click **Go!** to generate the map overlay and report.
11. When the application finishes processing, an overlay of points, thermals, and a selection outline will appear on top of the base map in the map viewer. Overlay Controls, Report Output Options, and Analysis Settings should appear in the Control Panel on the left as part of the **Results** tab. In Overlay Controls, turn off **Points** by clicking in the check box under 2006.



In the map above, employment locations within Portland, OR in 2006 are represented by the purple thermal density overlay. As you can see, employment is concentrated in the downtown area along the Willamette River, especially between Interstates 405 and 5.

11. Turn off **Thermals** and turn on **Points** by clicking in the check boxes under 2006. Using the Scale Ladder Tool in the top left of the map viewer, click the '+' symbol several times to zoom in to the Portland downtown area (using the mouse, drag/pan the map slightly so that it matches the map shown below). At the top of the Control Panel on the left, click on the **Map Key** tab to display the legend.



Note: Worker ranges in the Map Key may not exactly match the graphic above, as different screen sizes and resolutions will generate slightly different numbers.

In the map showing downtown Portland, each purple dot represents one Census block. Census blocks with no employment will not show a purple dot. Refer to the legend in the **Map Key** tab to see the estimated number of people working in each block for the selected year.

12. Return to the **Results** tab and click on the link **Zoom to Selection** under the Animate button. This will re-center the map viewer on Portland, which is the selection area. Un-check the **Thermals** box next to the Animate button. Also, check all of the **Points** boxes for all three available years (2004, 2005, and 2006) – this will help the loading speed of the animation. Click the **Animate** button to see three longitudinal years of workplace data displayed dynamically in the map viewer. Click on the **Stop** button to halt the animation.

13. In the middle of the Control Panel (with the **Results** tab active) click on the **HTML** report output option to see the Work Area Profile report for Portland, OR. Make sure the pop-up blocker is turned off on your web browser.

In the Area Profile Report shown below, the characteristics of Portland workers are broken out by age, earnings, and industry classification. Additionally, because **Workplace Area** was selected in the first step of the **Analysis** tab, ten Quarterly Workforce Indicators (QWI) appear at the bottom of the report.

Work Area Profile Report

<u>Total Jobs</u>	2006		2005		2004	
	Count	Share	Count	Share	Count	Share
Total Jobs	384,972	100.0%	374,546	100.0%	368,114	100.0%

<u>Jobs by Worker Age</u>	2006		2005		2004	
	Count	Share	Count	Share	Count	Share
Age 30 or younger	93,255	24.2%	89,476	23.9%	88,315	24.0%
Age 31 to 54	227,726	59.2%	225,128	60.1%	223,593	60.7%
Age 55 or older	63,991	16.6%	59,941	16.0%	56,205	15.3%

<u>Jobs by Earnings Paid</u>	2006		2005		2004	
	Count	Share	Count	Share	Count	Share
\$1,200 per month or less	90,530	23.5%	89,957	24.0%	90,847	24.7%
\$1,201 to \$3,400 per month	149,637	38.9%	150,964	40.3%	151,439	41.1%
More than \$3,400 per month	144,805	37.6%	133,625	35.7%	125,828	34.2%

<u>Jobs by Industry Type (2-digit NAICS)</u>	2006		2005		2004	
	Count	Share	Count	Share	Count	Share
Agriculture, Forestry, Fishing and Hunting	211	0.1%	232	0.1%	232	0.1%
Mining, Quarrying, and Oil and Gas Extraction	33	0.0%	42	0.0%	33	0.0%
Utilities	1,680	0.4%	1,697	0.5%	1,728	0.5%
Construction	17,969	4.7%	16,001	4.3%	15,703	4.3%
Manufacturing	31,292	8.1%	30,372	8.1%	29,466	8.0%
Wholesale Trade	23,383	6.1%	22,688	6.1%	21,993	6.0%
Retail Trade	34,478	9.0%	34,224	9.1%	34,073	9.3%
Transportation and Warehousing	19,924	5.2%	20,307	5.4%	18,568	5.0%
Information	12,039	3.1%	11,436	3.1%	11,292	3.1%
Finance and Insurance	19,861	5.2%	19,571	5.2%	20,761	5.6%
Real Estate and Rental and Leasing	9,413	2.4%	9,179	2.5%	9,239	2.5%
Professional, Scientific, and Technical Services	25,510	6.6%	24,520	6.5%	23,954	6.5%
Management of Companies and Enterprises	14,935	3.9%	13,880	3.7%	14,872	4.0%
Administration & Support, Waste Management and Remediation	24,776	6.4%	24,574	6.6%	23,237	6.3%
Educational Services	35,875	9.3%	34,633	9.2%	34,762	9.4%
Health Care and Social Assistance	45,253	11.8%	44,509	11.9%	42,795	11.6%
Arts, Entertainment, and Recreation	6,599	1.7%	6,320	1.7%	6,197	1.7%
Accommodation and Food Services	33,125	8.6%	32,191	8.6%	30,743	8.4%
Other Services (excluding Public Administration)	16,376	4.3%	15,796	4.2%	16,024	4.4%
Public Administration	12,239	3.2%	12,374	3.3%	12,442	3.4%

<u>QWI Indicators - Private Sector Jobs</u>	2006		2005		2004	
	Count	Share	Count	Share	Count	Share
Number of Employers	22,376	100.0%	22,004	100.0%	20,916	100.0%
Employment (Beginning-of-2nd quarter)	283,098	100.0%	276,912	100.0%	270,492	100.0%
Employment, Stable Jobs	249,001	100.0%	244,601	100.0%	239,901	100.0%
Separations, Stable Jobs	340,293	100.0%	329,235	100.0%	321,992	100.0%
New Hires, Stable Jobs	26,226	100.0%	23,617	100.0%	23,126	100.0%
Firm Job Gain	16,471	100.0%	14,653	100.0%	15,147	100.0%
Firm Job Loss	10,521	100.0%	9,928	100.0%	10,140	100.0%
Employment (reference quarter)	36,825	100.0%	35,706	100.0%	35,530	100.0%
Average Monthly Earnings, Stable Jobs	2,833	100.0%	2,677	100.0%	2,572	100.0%
Average Monthly Earnings Separations from Stable Jobs	1,265	100.0%	1,213	100.0%	1,232	100.0%
Average Monthly Earnings, New Hires, Stable Jobs	2,054	100.0%	1,972	100.0%	1,930	100.0%

Job counts and average earnings measures that are subject to item suppression at the block-level do not contribute to estimates for the selected area in this report. To the extent that the selected area in the QWI Report is affected by item suppression, job counts in the QWI Report will be lower than the corresponding job counts in the Shed Report.

<u>Report Settings</u>	
Report Year(s):	2006,2005,2004
Job Type:	Jobs
Labor Market Segment:	All Workers
Primary Selection Layer:	Cities/Towns
Primary Selection Features:	Portland
Advanced Area Selection:	Ignored.
Map Shows:	Blocks
Query ID:	122053886015833

14. To access report data in other forms, click on the other available **Report Output Options** in the middle of the **Results** tab.

15. For a companion analysis, follow the steps in a [Sample Labor Shed Analysis](#) to see a map and report showing where the Portland workers shown here are living.