

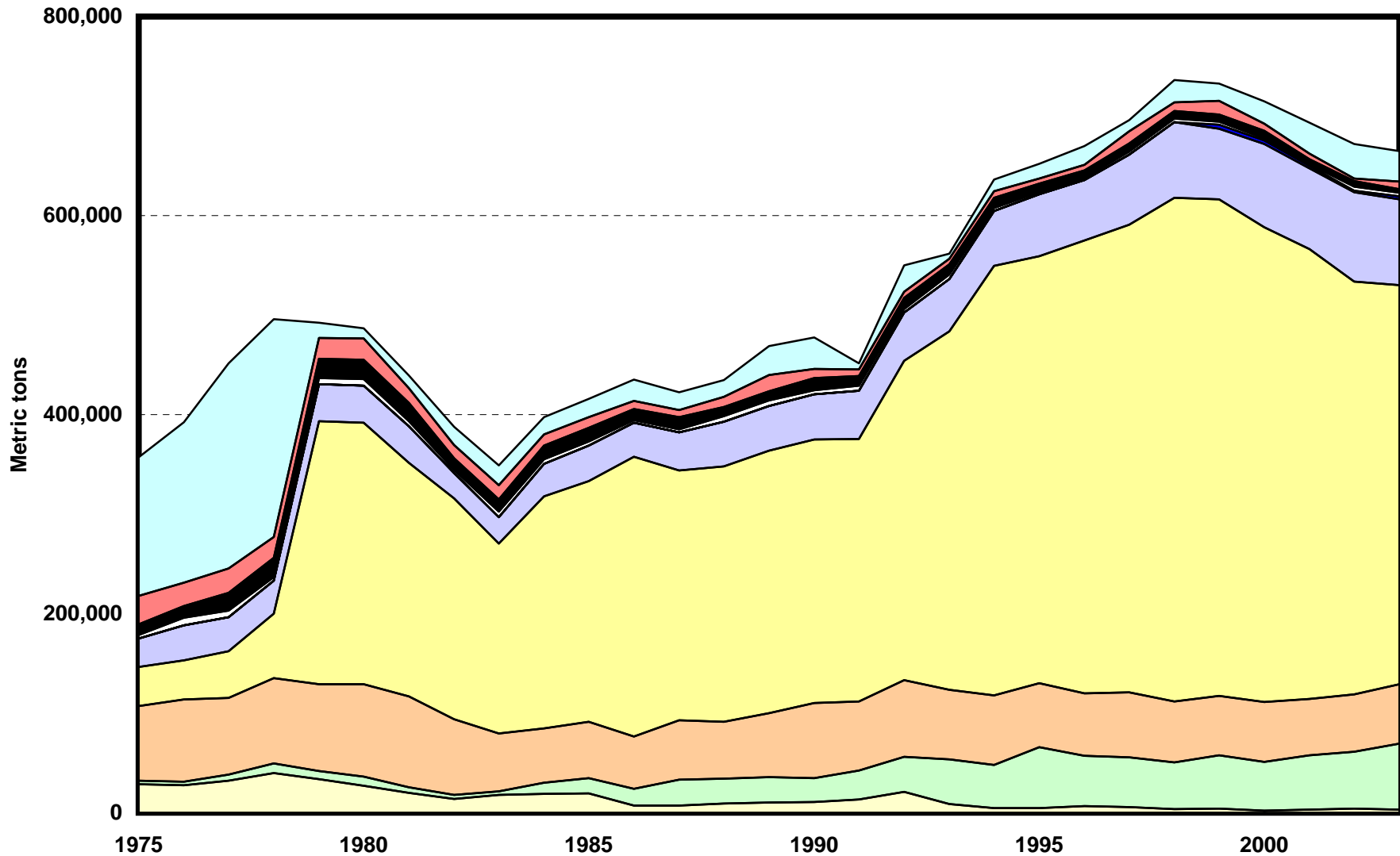
EXPANDED PERLITE END-USE STATISTICS¹
U.S. GEOLOGICAL SURVEY
 [Metric tons]

Last modification: September 15, 2005

Year	Concrete aggregate	Fillers	Filter aids	Formed products	Horticultural aggregate	Laundries	Low-temperature insulation	Masonry and cavity-fill insulation	Plaster aggregate	Other	Total	Undistributed	Apparent consumption
1975	28,600	3,570	75,000	39,300	28,600		3,570	10,700	28,600	139,000	357,000	107,000	464,000
1976	27,400	3,920	82,300	39,200	35,300		7,840	11,800	23,500	161,000	392,000	110,000	502,000
1977	32,300	5,900	77,000	46,800	34,600		6,530	18,000	24,500	206,000	452,000	90,000	542,000
1978	39,800	9,710	85,600	64,800	33,000		3,900	19,400	20,800	219,000	495,000	87,000	582,000
1979	33,600	8,160	87,500	264,000	37,600		5,620	19,800	21,000	15,300	493,000	106,000	599,000
1980	27,000	9,070	92,800	263,000	37,100		6,980	19,000	21,800	10,200	487,000	92,000	579,000
1981	19,800	5,620	91,200	235,000	36,500		5,350	18,100	15,100	12,800	440,000	96,000	536,000
1982	13,800	4,260	75,900	222,000	25,600		3,080	11,500	13,100	18,400	388,000	67,000	455,000
1983	17,800	3,810	58,000	191,000	26,500		5,440	12,300	14,000	19,900	349,000	98,000	447,000
1984	18,900	11,000	55,000	233,000	32,700		4,540	13,700	11,500	17,300	398,000	76,000	474,000
1985	19,400	15,200	56,600	242,000	35,900		3,720	13,800	10,700	18,700	416,000	83,000	499,000
1986	6,980	17,100	52,600	281,000	34,300		2,270	11,600	7,890	21,600	434,000	53,000	487,000
1987	6,890	26,200	59,900	251,000	38,200		3,180	12,100	7,350	17,500	423,000	88,000	511,000
1988	9,430	24,600	57,100	257,000	44,700		5,620	9,430	9,800	17,100	434,000	65,000	499,000
1989	10,100	25,600	64,200	264,000	45,000		5,530	9,250	16,300	29,000	469,000	90,000	559,000
1990	10,500	24,100	75,600	265,000	45,000		4,440	12,100	9,160	31,500	478,000	125,000	603,000
1991	13,200	29,100	69,300	264,000	48,400		5,200	9,400	6,600	6,400	452,000	88,000	540,000
1992	21,100	34,800	77,100	321,000	48,400		3,700	11,200	6,000	26,900	550,000	27,000	577,000
1993	8,420	45,300	70,000	360,000	52,600		4,670	9,930	5,940	5,100	562,000	51,000	613,000
1994	4,610	43,500	69,600	432,000	55,100		2,730	10,200	6,840	11,500	636,000	48,000	684,000
1995	4,790	61,100	64,400	429,000	62,000		2,270	8,360	5,230	14,900	652,000	92,000	744,000
1996	6,480	50,900	62,600	455,000	60,700		2,070	7,610	5,720	18,700	670,000	101,000	771,000
1997	5,410	50,200	65,300	470,000	70,500		2,800	8,220	12,400	10,900	695,000	108,000	803,000
1998	3,660	46,600	61,700	506,000	76,000		3,530	7,610	8,730	22,200	736,000	57,000	793,000
1999	4,330	53,200	60,000	499,000	70,700	4,070	2,850	7,500	13,700	17,300	729,000	79,000	808,000
2000	2,200	48,800	60,300	477,000	83,700	3,360	2,160	7,730	7,040	22,400	715,000	94,000	809,000
2001	3,280	54,400	56,800	452,000	81,000	2,440	1,750	4,880	5,750	30,900	693,000	27,000	720,000
2002	4,050	57,300	57,500	415,000	89,400	1,560	4,230	5,500	2,620	35,000	672,000	31,000	703,000
2003	2,970	66,600	59,600	401,000	86,400	3,030	3,560	3,440	7,490	30,600	664,000	37,000	701,000

¹Compiled by G.R. Matos and W.P. Bolen.

End Uses of Expanded Perlite



- Concrete aggregate
- Formed products
- Low-temperature insulation
- Other
- Fillers
- Horticultural aggregate
- Masonry and cavity-fill insulation
- Filter aids
- Laundries
- Plaster aggregate

Expanded Perlite End-Use Worksheet Notes

Data Source

The source of data for the expanded perlite end-use worksheet is the Mineral Yearbook, an annual collection, compilation, and analysis of mineral industry data, published by the U.S. Bureau of Mines and the U.S. Geological Survey.

End Use

End use is defined as the use of the mineral commodity in a particular industrial sector or product. Expanded perlite end-use categories are based on sold or used by producers. For expanded perlite end-use categories are concrete aggregate, fillers, filter aid, formed products, horticultural aggregate, laundries, low-temperature insulation, masonry and cavity-fill insulation, plaster aggregate, and other industrial uses.

The apparent consumption category applies to processed crude perlite and is not the apparent consumption of expanded perlite. Processed crude perlite is the “feedstock” for expanded perlite. Apparent consumption is calculated by adding the amounts of processed crude perlite sold or used in the U.S. together with imports and subtracting exports.

The undistributed category accounts for processing loss and stock changes. It is the difference between the apparent consumption of processed crude perlite and the total use of expanded perlite. These numbers are comprised of three parts. As crude processed perlite is expanded, the contained water (normally in the 2 percent to 5 percent range) is driven off and removed from the expanded perlite. Additionally, an indeterminate amount of crude processed perlite does not expand and is leftover as “waste” material. The last fraction in this category is crude processed perlite that is held in stockpile.

The horticultural aggregate category includes fertilizer carriers. The formed products category includes acoustic ceiling panels, pipe insulation, roof insulation board, and unspecified formed products. The other uses category includes fines, explosives, high-temperature insulation, paint texturizer, refractory, soap, steel, sugar manufacture, and various non-specified industrial uses.

Blank cells in the spreadsheet indicate that data were not available. Data are rounded to no more than three significant digits; data may not add to totals shown.

References

U.S. Bureau of Mines, 1977–96, Minerals Yearbook, v. I, 1975–94.

U.S. Geological Survey, 1997–2005, Minerals Yearbook, v. I, 1995–2003.

Recommended Citation Format:

(1) If taken from CD version:

U.S. Geological Survey, [year of last update, e.g., 2005], [Mineral commodity, e.g., Gold] statistics, *in* Kelly, T.D., and Matos, G.R., comps., Historical statistics for mineral and material commodities in the United States: U.S. Geological Survey Data Series 140, one CD-ROM. (Also available online at <http://pubs.usgs.gov/ds/2005/140/>.)

(2) If taken from online version:

U.S. Geological Survey, [year of last update, e.g., 2005], [Mineral commodity, e.g., Gold] statistics, *in* Kelly, T.D., and Matos, G.R., comps., Historical statistics for mineral and material commodities in the United States: U.S. Geological Survey Data Series 140, available online at <http://pubs.usgs.gov/ds/2005/140/>. (Accessed [date].)

For more information, please contact:

[USGS Perlite Commodity Specialist](#)