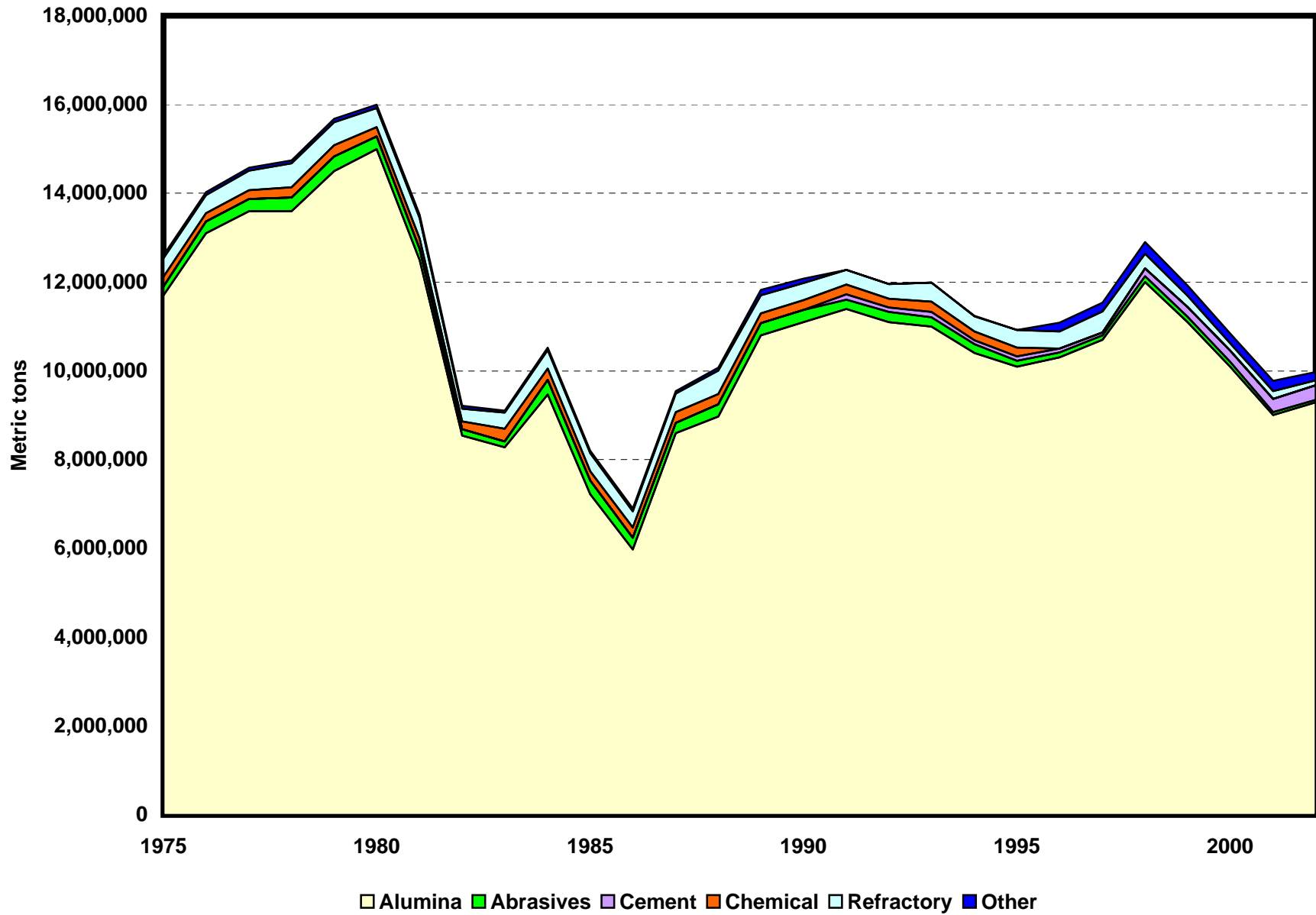


BAUXITE END-USE STATISTICS¹
U.S. GEOLOGICAL SURVEY
[Metric tons of dry bauxite equivalent]
Last modification: September 1, 2005

Year	Alumina	Abrasives	Cement	Chemical	Refractory	Other	Apparent consumption
1975	11,700,000	196,000		225,000	417,000	68,100	12,600,000
1976	13,100,000	264,000		187,000	407,000	68,100	14,000,000
1977	13,600,000	274,000		198,000	433,000	70,100	14,500,000
1978	13,600,000	310,000		221,000	544,000	70,000	14,700,000
1979	14,500,000	327,000		256,000	520,000	70,000	15,700,000
1980	15,000,000	277,000		211,000	430,000	77,000	16,000,000
1981	12,500,000	249,000		232,000	460,000	75,000	13,500,000
1982	8,540,000	149,000		169,000	286,000	71,000	9,200,000
1983	8,280,000	135,000		281,000	362,000	48,000	9,100,000
1984	9,470,000	328,000		251,000	420,000	56,000	10,500,000
1985	7,220,000	305,000		219,000	408,000	55,000	8,200,000
1986	5,980,000	259,000		231,000	372,000	59,000	6,900,000
1987	8,600,000	224,000		243,000	422,000	58,000	9,500,000
1988	8,970,000	274,000		236,000	524,000	70,000	10,100,000
1989	10,800,000	275,000		223,000	407,000	123,000	11,800,000
1990	11,100,000	276,000		212,000	387,000	103,000	12,000,000
1991	11,400,000	204,000	120,000	218,000	328,000	4,000	12,300,000
1992	11,100,000	223,000	110,000	190,000	334,000	3,000	11,900,000
1993	11,000,000	203,000	130,000	225,000	429,000	4,000	12,000,000
1994	10,400,000	197,000	94,000	192,000	350,000	4,000	11,200,000
1995	10,100,000	133,000	92,000	201,000	394,000	4,000	10,900,000
1996	10,300,000	117,000	87,000	W	380,000	201,000	11,100,000
1997	10,700,000	98,000	71,000	W	466,000	200,000	11,500,000
1998	12,000,000	135,000	176,000	W	332,000	261,000	12,900,000
1999	11,100,000	113,000	228,000	W	251,000	226,000	11,900,000
2000	10,100,000	111,000	253,000	W	160,000	222,000	10,800,000
2001	9,010,000	61,000	303,000	W	175,000	222,000	9,770,000
2002	9,290,000	52,000	335,000	W	115,000	183,000	9,980,000
2003	10,600,000	53,000	333,000	W	150,000	112,000	11,200,000

W Withheld to avoid disclosing company proprietary data; included with the "Other" uses category.

End Uses of Bauxite



Bauxite End-Use Worksheet Notes

Data Source

The source of data for the bauxite end-use worksheet is the Minerals Yearbook (MYB), an annual collection, compilation, and analysis of mineral industry data, published by the U.S. Bureau of Mines and the U.S. Geological Survey.

End Use

End use is defined as the use of the mineral commodity in a particular industrial sector or product. For bauxite, end-use categories are alumina, abrasives, cement, chemical, refractory, and other industrial uses.

The abrasives category included consumption by the Canadian abrasives industry until 1994. The other industrial uses category included cement, municipal water works, oil, and steel and ferroalloys until 1990. After 1990, cement use survey coverage was improved significantly, and data were removed from the other industrial uses category and reported separately.

During the early and mid-1980s, alumina consumption was affected by the recession and the restructuring of the U.S. industry. Many alumina refineries closed in that period, some of which were permanently shutdown, thus, reducing the amount of bauxite consumed by this segment of the industry. Significant alumina production moved offshore and imports increased to meet the demand for aluminum.

Apparent consumption reproduces reported consumption values from the MYB. For consistency within the Historical Statistics series, the column is titled apparent consumption.

W in the spreadsheet indicates information was withheld to avoid disclosing company proprietary data; data were included with the other uses category. Data are rounded to no more than three significant digits; data may not add to totals shown.

References

U.S. Bureau of Mines, 1977–96, Minerals Yearbook, v. I, 1975–94.

U.S. Geological Survey, 1997–2005, Minerals Yearbook, v. I, 1995–2003.

Recommended Citation Format:

(1) If taken from CD version:

U.S. Geological Survey, [year of last update, e.g., 2005], [Mineral commodity, e.g., Gold] statistics, *in* Kelly, T.D., and Matos, G.R., comps., Historical statistics for mineral and material commodities in the United States: U.S. Geological Survey Data Series 140, one CD-ROM. (Also available online at <http://pubs.usgs.gov/ds/2005/140/>.)

(2) If taken from online version:

U.S. Geological Survey, [year of last update, e.g., 2005], [Mineral commodity, e.g., Gold] statistics, *in* Kelly, T.D., and Matos, G.R., comps., Historical statistics for mineral and material commodities in the United States: U.S. Geological Survey Data Series 140, available online at <http://pubs.usgs.gov/ds/2005/140/>. (Accessed [date].)

For more information, please contact:

[USGS Bauxite Commodity Specialist](#)