

UNITED STATES DEPARTMENT OF THE INTERIOR

MAIN INTERIOR BUILDING
MODERNIZATION PROGRAM OFFICE (MPO)



GET READY FOR PHASE III

MODERNIZATION
PROJECT
NEWSLETTER
PUBLICATION # 4

MARCH 2006

IN THIS ISSUE:

- PHASE III PREPARATIONS
- MOVE SCHEDULE
- ITEMS OF INTEREST

**MPO
HOTLINE
202-208-7283**

Dirk J. Meyer, AIA
DOI Program Manager

John Daw
GSA Project Manager



The Re-Occupation of Wing 5 and the Move-Out of Wing 4 is now underway. The building's life safety systems have been completed, tested and accepted by GSA. New stair towers now occupy what previously was a bank of offices near the end of the 5th wings east and west.

One should explore these changes even if they are not currently housed in the 5th wing because in the event of an emergency these new stair towers will allow the occupant to discharge directly to the exterior of the building at the first floor level. Additionally, the eastern most stair tower provides egress from the garage.

After completion of the moves new barriers will be erected to separate the 4th wing construction zone from the occupied space. This move is affecting approximately 420 offices housed in just over 95,000 square feet of space.

MOVE SCHEDULE

WEEK	DATE	GROUP	WING	FLOOR
1	4/14/06	MPO	5	2ND(E)
		BOR	5	7TH(E&W)
2	4/21/06	BIA	5	4TH(E&W)
		GSA	6	2ND(E)
3	4/28/06	SOL	5	6TH(E&W)
		PLE	SIB	3RD
4	5/5/06	SOL	5	5TH(E)
		MMS	5	5TH(W)
		OCIO	5	5TH(W)
5	5/12/06	PPA	5	3RD(W)
		NRDAR	5	3RD(W)
		TPIA	5	3RD(W)
6	5/19/06	PFM	5	2ND
		IACB	5	2ND(E)
		NBC HR	3	2700
7	5/26/06	OCR	5	2nd
		NBC-IT/ TELECOM	5	1ST(W)
		USGS	6	2nd
		IWRO	3	2nd
8	6/2/06	FOIA	SIB	1ST
		CCS	6	1ST (W)

ITEMS OF INTEREST

INSURING A HEALTHY WORK PLACE

To comply with requirements of the Leadership for Energy and Environmental Design for Existing Buildings (LEED-EB) rating system, a two week flush-out of the system with new filtration media with a minimum efficiency reporting value (MERV) of 13 will be conducted prior to occupancy of the 5th wing. MERV is a number from 1-16 that is relative to the air filter's efficiency. The higher the MERV, the more efficient the air filter is at removing particles.

IEQ FORUM

We are working through Departmental Industrial Hygienists to develop a forum for the discussion of indoor air related issues and concerns. The first meeting is scheduled for the week of April 17, 2006.

COMMISSIONING PLAN

A scope of work is being prepared for the development of a commissioning plan for the renovated space in the MIB. The plan will address the operating requirements, heating and cooling systems, humidity control, water and lighting systems and building control systems to ensure that the building systems are operating as designed.

GREEN ROOM

As part of the recycling effort, surplus useable office supplies may be donated to the Green Room. Contact the Building Manager's Office to arrange for a pick-up.

RECYCLING

Questions about recycling? Check out the guide at: www.nbc.gov/RecyclingGuide.pdf.

ENERGY STAR SCORE OF 62

The calculated Energy Star Score, a performance rating system developed by the Environmental Protection Agency (EPA) to demonstrate building energy efficiency and performance was 62 for the Main Interior Building in 2005. If maintained, this score will qualify the MIB for the Minimum Energy Performance prerequisite required for certification in the Leadership for Energy and Environmental Design for Existing Buildings (LEED-EB) rating system.

NIOSH

In February the MPO received a letter from National Institute of Occupational Safety and Health providing project recommendations. This letter has been posted on the MPO web site.

*Please join us at the bi-monthly tenant user group meetings.
The next meeting is scheduled for May 25, 2006., at 10:00 a.m.
in the Rachael Carson Room.*

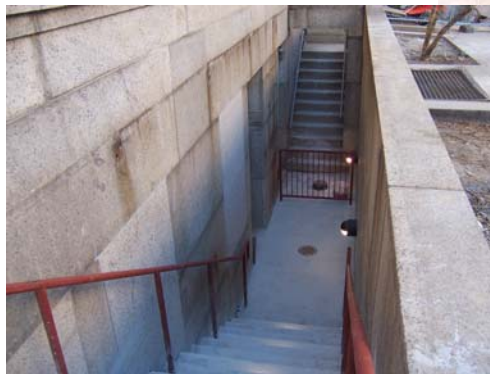
New Egress Routes:

Please familiarize yourselves with the new egress routes and exit discharge from the 5th wing.

You may also find it useful to refer to the zoned evacuation table in the vol. #2 October '05 issue which indicates which floors are grouped together in the event of a localized alarm.



18th Street Exit discharge



19th Street Exit discharge

