



By the Numbers

Colorado Landscape Conservation Initiative

- Number of acres of Federal land within the project area: **13.4 million**
- Number of acres of State, private, and local government land within the project area: **13.5 million**
- Number of wildlife species in Colorado: more than **960**
- Number of recreation visitors annually: **5 million** in Colorado, many of whom visit National Monuments, the Anasazi Heritage Center in Southwest Colorado, and National Conservation Areas within the project area

Southwestern Colorado provides quality habitat for diverse wildlife populations, including seven of the eight remaining populations of Gunnison sage-grouse in the world, as well as desert big horn sheep, lynx, Rio Grande cutthroat trout, Kachina daisy, and numerous special status species. The Bureau of Land Management, Colorado Division of Wildlife, and other Federal, State, and private partners are working together to restore, enhance, and protect habitats through conservation planning efforts and partnerships.

Multiple-Use Context
Increases in land uses related to recreation, energy, and population growth place more demands on natural resources and accelerate the need to invest additional dollars to sustain and improve habitat conditions. The Colorado Landscape Conservation Initiative is an opportunity for the BLM to address land stewardship and conservation priorities on an important landscape, consistent with the Bureau's multiple-use mission. This effort would complement habitat restoration and mitigation efforts required

Meeting both our energy and land health goals requires integrated, landscape-scale habitat protections and resource management. Our initiative combines investments in habitat protection with policy improvements that will protect 800 species, including the sage-grouse.

Secretary Dirk Kempthorne
February 5, 2007

Landscape Approach

The greatest value of wildlife conservation is achieved when wildlife enhancement is conducted at a landscape scale. A cooperative approach to conservation can lead to actions that are more cost effective, sustainable, and compatible with other governmental and public conservation goals. Restoring these areas will bring the immediate and long-lasting benefits of improved land health.

Program Objectives

- Maintain, enhance, and expand existing habitat and populations of Gunnison sage-grouse, lynx, desert big horn sheep, and other special status species in Colorado, while continuing to provide multiple-use opportunities.
- Promote native vegetation, habitat restoration, and functioning ecosystems to maintain flourishing plant, animal, and aquatic resources throughout the area.

What is the Healthy Lands Initiative?

The Healthy Lands Initiative represents a new concept for meeting emerging challenges in managing natural resources for continued multiple use with flexible, landscape-level approaches.

The Initiative will enable and encourage local BLM managers to set priorities across a broader scale and mitigate impacts to an array of resources in ways not previously available to them.

The President's 2008 budget requests a substantial increase of \$15 million in funding for the BLM to begin implementing the Initiative in six specific geographic areas to demonstrate the new approach. Projects will be located in Wyoming (\$4.5 million), New Mexico (\$3.5 million), Utah (\$2.0 million), Oregon/Idaho/Nevada (\$1.9 million), southern Idaho (\$1.8 million) and Colorado (\$1.3 million).



of energy companies when developing Federal minerals. The BLM believes it can protect both the habitat and the species that rely on this land, and maintain current and future energy production for the Nation.

Partnerships in the Landscape Initiative

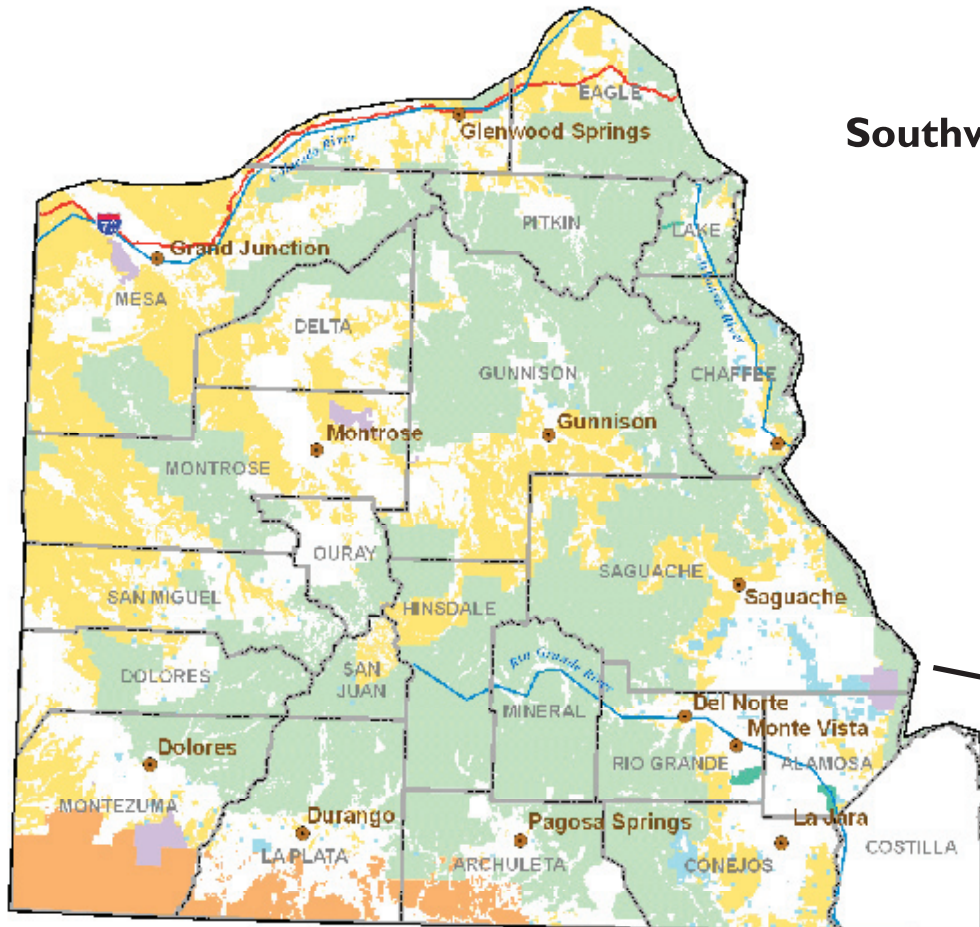
The BLM is working with the following partners on this project:

Colorado Division of Wildlife
Habitat Partnership Program
USDA Forest Service
USDA Natural Resources Conservation Service
National Park Service
U.S. Fish & Wildlife Service
U.S. Geological Survey

For additional information, contact
Bureau of Land Management
Colorado State Office
Vaughn Whatley
303-239-3668
Vaughn_Whatley@blm.gov

Colorado's Planned Activities and Opportunities for 2008 and Beyond

- Prioritize and implement appropriate habitat treatment projects to enhance existing resources or restore former habitat conditions.
- Implement effective weed management efforts across the area.
- Expand the native-seed program through the Uncompahgre Plateau Project to facilitate the development and use of native seed in reclamation efforts across the landscape.
- Pool resources to investigate and/or pursue conservation easements or opportunities to protect key habitats across the landscape.
- Work with partners to ensure that project implementation and habitat management is planned and occurs across ownership boundaries to maximize effectiveness across the landscape.
- Expand knowledge of resource conditions on the landscape and identify habitat objectives for the future.
- Monitor the effectiveness of treatments within area and adapt management accordingly.



Southwestern Colorado