



**Method 1603: *Escherichia coli*  
(*E. coli*) in Water by Membrane  
Filtration Using Modified  
membrane-Thermotolerant  
*Escherichia coli* Agar  
(Modified mTEC)**



U.S. Environmental Protection Agency  
Office of Water (4303T)  
1200 Pennsylvania Avenue, NW  
Washington, DC 20460

EPA-821-R-02-023

## Disclaimer

The Engineering and Analysis Division, of the Office of Science and Technology, has reviewed and approved this report for publication. The Office of Science and Technology directed, managed, and reviewed the work of DynCorp in preparing this report. Neither the United States Government nor any of its employees, contractors, or their employees make any warranty, expressed or implied, or assumes any legal liability or responsibility for any third party's use of or the results of such use of any information, apparatus, product, or process discussed in this report, or represents that its use by such party would not infringe on privately owned rights. This document combines the information previously published in *Test Methods for Escherichia coli and Enterococci in Water by the Membrane Filter Procedure* (EPA-600/4-85-076) (Reference 18.6 and *Improved Enumeration Methods for the Recreational Water Quality Indicators: Enterococci and Escherichia coli* (EPA/821/R-97/004) (Reference 18.4. Mention of trade names or commercial products does not constitute endorsement or recommendation for use.

Questions concerning this method or its application should be addressed to:

Robin K. Oshiro  
Engineering and Analysis Division (4303T)  
U.S. EPA Office of Water, Office of Science and Technology  
1200 Pennsylvania Avenue, NW  
Washington, DC 20460  
oshiro.robin@epa.gov  
202-566-1075  
202-566-1053 (facsimile)

## Table of Contents

1.0	Scope and Application .....	1
2.0	Summary of Method .....	1
3.0	Definitions .....	1
4.0	Interferences and Contamination .....	1
5.0	Safety .....	1
6.0	Equipment and Supplies .....	2
7.0	Reagents and Standards .....	3
8.0	Sample Collection, Preservation, and Storage .....	6
9.0	Quality Control .....	6
10.0	Calibration and Standardization .....	6
11.0	Procedure .....	6
12.0	Data Analysis and Calculations .....	7
13.0	Method Performance .....	7
14.0	Reporting Results .....	8
15.0	Verification Procedure .....	8
16.0	Pollution Prevention .....	9
17.0	Waste Management .....	9
18.0	References .....	9

# Method 1603: *Escherichia coli* (*E. coli*) in Water by Membrane Filtration Using Modified membrane- Thermotolerant *Escherichia coli* Agar (modified mTEC)

September 2002

## 1.0 Scope and Application

- 1.1 This method describes a revised *Escherichia coli* membrane filter (MF) procedure, a single-step method that uses one medium, modified mTEC Agar, and does not require the transfer of the membrane filter to another medium or other substrate. The modified medium contains a chromogen (5-bromo-6-chloro-3-indolyl- $\beta$ -D-glucuronide), which is catabolized to glucuronic acid and a red- or magenta-colored compound by *E. coli* that produce the enzyme  $\beta$ -D-glucuronidase. The apparatus and equipment, and sampling, filtration, and verification procedures for this modified mTEC method are identical to those of the original mTEC method. Because the bacterium is a natural inhabitant only of the intestinal tract of warm-blooded animals, its presence in water samples is an indication of fecal pollution and the possible presence of enteric pathogens.
- 1.2 The *E. coli* test is used as a measure of recreational water quality. Epidemiological studies have led to the development of criteria which can be used to promulgate recreational water standards based on established relationships between health effects and water quality. The significance of finding *E. coli* in recreational water samples is the direct relationship between the density of *E. coli* and the risk of gastrointestinal illness associated with swimming in the water (Reference 18.3).
- 1.3 The test for *E. coli* can be applied to fresh, estuarine, and marine waters.
- 1.4 Since a wide range of sample volumes or dilutions can be analyzed by the MF technique, a wide range of *E. coli* levels in water can be detected and enumerated.

## 2.0 Summary of Method

- 2.1 The MF method provides a direct count of *E. coli* in water based on the development of colonies that grow on the surface of a membrane filter. A water sample is filtered through the membrane, which retains the bacteria. After filtration, the membrane containing the bacteria is placed on a selective and differential medium, modified mTEC Agar, incubated at  $35 \pm 0.5^\circ\text{C}$  for 2 h to resuscitate the injured or stressed bacteria, and then incubated at  $44.5 \pm 0.2^\circ\text{C}$  for 22 h. The modified method eliminates the transfer of the membrane filter to another substrate. The target colonies on modified mTEC agar are red or magenta in color after the incubation period.

## 3.0 Definitions

- 3.1 In this method, *E. coli* are those bacteria which produce red or magenta colonies on the modified mTEC agar.

## 4.0 Interferences and Contamination

- 4.1 Water samples containing colloidal or suspended particulate material can clog the membrane filter and prevent filtration, or cause spreading of bacterial colonies which could interfere with identification of target colonies.

## 5.0 Safety

**5.1** The analyst/technician must know and observe the normal safety procedures required in a microbiology laboratory while preparing, using, and disposing of cultures, reagents, and materials and while operating sterilization equipment.

**5.2** Mouth-pipetting is prohibited.

## **6.0 Equipment and Supplies**

**6.1** Glass lens with magnification of 2-5x, or stereoscopic microscope.

**6.2** Lamp, with a cool, white fluorescent tube.

**6.3** Hand tally or electronic counting device.

**6.4** Pipet container, stainless steel, aluminum or borosilicate glass, for glass pipets.

**6.5** Pipets, sterile, T.D. bacteriological or Mohr, glass or plastic, of appropriate volume.

**6.6** Graduated cylinders, 100-1000 mL, covered with aluminum foil or kraft paper and sterile.

**6.7** Membrane filtration units (filter base and funnel), glass, plastic or stainless steel, wrapped with aluminum foil or kraft paper and sterilized.

**6.8** Ultraviolet unit for sanitization of the filter funnel between filtrations (optional).

**6.9** Line vacuum, electric vacuum pump, or aspirator for use as a vacuum source. In an emergency or in the field, a hand pump or a syringe equipped with a check valve to prevent the return flow of air, can be used.

**6.10** Filter flask, vacuum, usually 1 L, with appropriate tubing. A filter manifold to hold a number of filter bases is optional.

**6.11** Flask for safety trap placed between the filter flask and the vacuum source.

**6.12** Forceps, straight or curved, with smooth tips to handle filters without damage.

**6.13** Ethanol, methanol or isopropanol in a small, wide-mouth container, for flame-sterilizing forceps.

**6.14** Burner, Bunsen or Fisher type, or electric incinerator unit for sterilizing loops and needles.

**6.15** Thermometer, checked against a National Institute of Standards and Technology (NIST) certified thermometer, or one that meets the requirements of NIST Monograph SP 250-23.

**6.16** Petri dishes, sterile, plastic, 9 x 50 mm, with tight-fitting lids; or 15 x 60 mm, glass or plastic, with loose-fitting lids; or 15 x 100 mm.

**6.17** Bottles, milk dilution, borosilicate glass, screw-cap with neoprene liners, marked at 99 mL for 1:100 dilutions. Dilution bottles marked at 90 mL or tubes marked at 9 mL may be used for 1:10 dilutions.

**6.18** Flasks, borosilicate glass, screw-cap, 250-2000 mL volume.

**6.19** Membrane filters, sterile, white, grid marked, 47 mm diameter, with  $0.45 \pm 0.02$   $\mu\text{m}$  pore size.

- 6.20** Inoculation loops, at least 3 mm diameter, and needles, nichrome or platinum wire, 26 B & S gauge, in suitable holders. Sterile disposable applicator sticks or plastic loops are alternatives to inoculation loops.

*Note:* A platinum loop is required for the cytochrome oxidase test in the verification procedure.

- 6.21** Incubator maintained at  $35 \pm 0.5^\circ\text{C}$ , with approximately 90% humidity if loose-lidded petri dishes are used.
- 6.22** Waterbath maintained at  $44.5 \pm 0.5^\circ\text{C}$ .
- 6.23** Waterbath maintained at  $50^\circ\text{C}$  for tempering agar.
- 6.24** Test tubes, 20 x 150 mm, borosilicate glass or plastic.
- 6.25** Test tubes, 10 x 75 mm, borosilicate glass
- 6.26** Caps, aluminum or autoclavable plastic, for 20 mm diameter test tubes.
- 6.27** Test tubes screw-cap, borosilicate glass, 16 x 125 mm or other appropriate size.
- 6.28** Filter Paper.
- 6.29** Whirl-Pak® bags.

## 7.0 Reagents and Standards

- 7.1** Purity of Reagents: Reagent grade chemicals shall be used in all tests. Unless otherwise indicated, reagents shall conform to the specifications of the Committee on Analytical Reagents of the American Chemical Society (Reference 18.5). The agar used in preparation of culture media must be of microbiological grade.
- 7.2** Whenever possible, use commercial culture media as a means of quality control.
- 7.3** Purity of Water: Reagent water conforming to Specification D1193, reagent water conforming Type II, Annual Book of ASTM Standards (Reference 18.1).
- 7.4** Phosphate Buffered Saline
- 7.4.1** Composition:
- |                               |        |
|-------------------------------|--------|
| Sodium Dihydrogen Phosphate   | 0.58 g |
| Sodium Monohydrogen Phosphate | 2.5 g  |
| Sodium Chloride               | 8.5 g  |
| Reagent-Grade Distilled Water | 1.0 L  |
- 7.4.2** Preparation: Dissolve the ingredients in 1 L of reagent-grade distilled water in a flask, and dispense in appropriate amounts for dilutions in screw-cap bottles or culture tubes, and/or into containers for use as rinse water. Autoclave at  $121^\circ\text{C}$  (15 lb pressure) for 15 min. Final pH should be  $7.4 \pm 0.2$ .
- 7.5** Phosphate Buffered Dilution Water (References 18.2)

**7.5.1** Composition of Stock Phosphate Buffer Solution:

Phosphate Dihydrogen Phosphate	34.0 g
Reagent-Grade Distilled Water	500.0 mL

Preparation: Adjust the pH of the solution to 7.2 with 1 N NaOH, and bring the volume to 1 L with reagent-grade distilled water. Sterilize by filtration or autoclave at 121°C (15 lb pressure) for 15 min.

**7.5.2** Preparation of Stock Magnesium Chloride Solution: Add 38 g anhydrous MgCl<sub>2</sub> or 81.1 g MgCl<sub>2</sub>•6H<sub>2</sub>O to 1 L reagent-grade distilled water. Sterilize by filtration or autoclave at 121°C (15 lb pressure) for 15 min.

**7.5.3** Storage of Stock Solutions: After sterilization, store the stock solutions in the refrigerator until used. Handle aseptically. If evidence of mold or other contamination appears, the affected stock solution should be discarded and a fresh solution should be prepared.

**7.5.4** Working Phosphate Buffered Dilution Water: Mix 1.25 mL of the stock phosphate buffer and 5 mL of the MgCl<sub>2</sub> stock per liter of reagent-grade distilled water. Dispense in appropriate amounts for dilutions in screwcap bottles or culture tubes, and/or into containers for use as rinse water. Autoclave at 121°C (15 lb pressure) for 15 min. Final pH should be 7.0 ± 0.2.

**7.6** Modified mTEC Agar (Difco 214884 or 214880)**7.6.1** Composition:

Protease Peptone #3	5.0 g
Yeast Extract	3.0 g
Lactose	10.0 g
NaCl	7.5 g
Dipotassium Phosphate	3.3 g
Monopotassium Phosphate	1.0 g
Sodium Lauryl Sulfate	0.2 g
Sodium Desoxycholate	0.1 g
Chromogen (5-bromo-6-chloro-3-indolyl- β-D-glucuronide)	0.5 g
Agar	15.0 g
Reagent-Grade Distilled Water	1.0 L

**7.6.2** Preparation: Add 45.6 g dehydrated modified mTEC Agar to 1 L of reagent-grade distilled water in a flask, and heat to boiling until the ingredients dissolve. Autoclave at 121°C (15 lb pressure) for 15 min, and cool in a 50°C waterbath. Pour the medium into each 9 x 50 mm culture dish to a 4-5 mm depth (approximately 4-6 mL), and allow to solidify. Final pH should be 7.3 ± 0.2. Store in a refrigerator.

**7.7** Nutrient Agar (Difco 0001, BD 4311472)**7.7.1** Composition:

Peptone	5.0 g
Beef Extract	3.0 g
Agar	15.0 g
Reagent-Grade Distilled Water	1.0 L



**7.7.2** Preparation: Add 23 g of Nutrient Agar to 1 L of reagent-grade distilled water, and mix well. Heat to boiling to dissolve the agar completely. Dispense in screwcap tubes, and autoclave at 121°C (15 lb pressure) for 15 min. Remove the tubes and slant. Final pH should be  $6.8 \pm 0.2$ .

**7.8** Tryptic Soy Broth (Difco 0370); Trypticase Soy Broth (BD 99071)

**7.8.1** Composition:

Tryptone or Trypticase	17.0 g
Soytone or Phytone	3.0 g
Sodium Chloride	5.0 g
Dextrose	2.5 g
Dipotassium Phosphate	2.5 g
Reagent-Grade Distilled Water	1.0 L

**7.8.2** Preparation: Add 30 g of dehydrated Tryptic/Trypticase Soy Broth to 1 L of reagent-grade distilled water. Warm the broth, and mix gently to dissolve the medium completely. Dispense in screw-cap tubes, and autoclave at 121°C (15 lb pressure) for 15 min. Final pH should be  $7.3 \pm 0.2$ .

**7.9** Simmons Citrate Agar (Difco 0091, BD 4311620)

**7.9.1** Composition:

Magnesium Sulfate	0.2 g
Monoammonium Phosphate	1.0 g
Dipotassium Phosphate	1.0 g
Sodium Citrate	2.0 g
Sodium Chloride	5.0 g
Brom Thymol Blue	0.08 g
Agar	15.0 g
Reagent-Grade Distilled Water	1.0 L

**7.9.2** Preparation: Add 24.2 g Simmons Citrate Agar to 1 L of reagent-grade distilled water. Heat to boiling to dissolve completely. Dispense into screwcap tubes, and autoclave at 121°C (15 lb pressure) for 15 min. Cool the tubes and slant. Final pH should be  $6.8 \pm 0.2$ .

**7.10** Tryptone 1% (Difco 0123); Tryptophane Broth (BD 4321717 and 4321718)

**7.10.1** Composition:

Tryptone or Trypticase Peptone	10.0 g
Reagent-Grade Distilled Water	1.0 L

**7.10.2** Preparation: Add 10 g tryptone or trypticase peptone to 1 L or reagent-grade distilled water, and heat, mixing until dissolved. Dispense in 5-mL volumes into tubes, and autoclave 121°C (15 lb pressure) for 15 min. Final pH should be  $7.2 \pm 0.2$ .

**7.11** EC Broth (Difco 0314, BD 4311187)

**7.11.1** Composition:

Tryptose or Trypticase Peptone	20.0 g
Lactose	5.0 g
Bile Salts no. 3 or Bile Salts Mixture	1.5 g
Dipotassium Phosphate	4.0 g
Monopotassium Phosphate	1.5 g

Sodium Chloride	5.0 g
Reagent-Grade Distilled Water	1.0 L

**7.11.2** Preparation: Add 37 g dehydrated EC medium to 1 L of reagent-grade distilled water, and warm to dissolve completely. Dispense into fermentation tubes (20 x 150 mm tubes containing inverted 10 x 75 mm vials). Autoclave at 121°C (15 lb pressure) for 15 min. Final pH should be  $6.9 \pm 0.2$ .

## 7.12 Oxidase Reagent

### 7.12.1 Composition:

N, N, N', N'-tetramethyl-p-phenylenediamine dihydrochloride, 1% aqueous solution (1 g per 100 mL *sterile* reagent-grade distilled water).

## 7.13 Kovacs Indole Reagent

### 7.13.1 Composition:

$\rho$ -dimethylaminobenzaldehyde	10.0 g
Amyl or Isoamyl Alcohol	150.0 mL
Concentrated (12 M) Hydrochloric Acid	50.0 mL

**7.13.2** Preparation: Dissolve  $\rho$ -dimethylaminobenzaldehyde in alcohol, slowly add hydrochloric acid, and mix.

## 8.0 Sample Collection, Preservation, and Storage

**8.1** Sampling procedures are described in detail in the USEPA microbiology methods manual, Section II, A (Reference 18.2). Adherence to sample preservation procedures and holding time limits is critical to the production of valid data. Samples not collected according to these rules should not be analyzed.

### 8.1.1 Storage Temperature and Handling Conditions

Ice or refrigerate water samples at a temperature of 1-4°C during transit to the laboratory. Use insulated containers to assure proper maintenance of storage temperature. Take care that sample bottles are not totally immersed in water during transit or storage.

### 8.1.2 Holding Time Limitations

Examine samples as soon as possible after collection. Do not hold samples longer than 6 h between collection and initiation of analyses.

## 9.0 Quality Control

**9.1** See recommendations on quality control for microbiological analyses in the USEPA microbiology methods manual, Part IV, C (Reference 18.2).

## 10.0 Calibration and Standardization

**10.1** Check temperatures in incubators daily to ensure operation within stated limits.

**10.2** Check thermometers at least annually against a NIST certified thermometer or one that meets the requirements of NIST Monograph SP 250-23. Check mercury columns for breaks.

## 11.0 Procedure

- 11.1** Prepare the modified mTEC Agar as directed in section 7.6.
- 11.2** Mark the petri dish and report form with the sample identification and volume.
- 11.3** Place a sterile membrane filter on the filter base, grid side up, and attach the funnel to the base so that the membrane filter is held between the funnel and the base.
- 11.4** Shake the sample bottle vigorously at least 25 times to distribute the bacteria uniformly, and measure the desired volume of sample or dilution into the funnel.
- 11.5** Select sample volumes based on previous knowledge of the pollution level, to produce 20-80 *E. coli* colonies on the membranes. Sample volumes of 1-100 mL are normally tested at half-log intervals (e.g., 100, 30, 10, 3 mL).
- 11.6** Smaller sample sizes or sample dilutions can be used to minimize the interference of turbidity or for high bacterial densities. Multiple volumes of the same sample or sample dilutions may be filtered, and the results may be combined.
- 11.7** Filter the sample, and rinse the sides of the funnel at least twice with 20-30 mL of sterile buffered rinse water. Turn off the vacuum, and remove the funnel from the filter base.
- 11.8** Use sterile forceps to aseptically remove the membrane filter from the filter base, and roll it onto the modified mTEC Agar to avoid the formation of bubbles between the membrane and the agar surface. Reseat the membrane if bubbles occur. Run the forceps around the edge of the filter to be sure that the filter is properly seated on the agar. Close the dish, invert, and incubate  $35 \pm 0.5^\circ\text{C}$  for 2 h.
- 11.9** After a 2 h incubation at  $35 \pm 0.5^\circ\text{C}$ , transfer the plate to a Whirl-Pak® bag, seal the bag, place the bag with the plate inverted in a test-tube rack, and put the rack in a  $44.5 \pm 0.2^\circ\text{C}$  waterbath for 22-24 h.
- 11.10** After 22-24 h, remove the plate from the waterbath, count and record the number of red or magenta colonies with the aid of an illuminated lens with a 2-5x magnification or a stereoscopic microscope (See Photo 1).

## 12.0 Data Analysis and Calculations

Use the following general rules to calculate the *E. coli* count per 100 mL of sample:

- 12.1** Select the membrane filter with an acceptable number of magenta or red colonies (20-80), and calculate the number of *E. coli* per 100 mL according to the following general formula:

$$E. coli/100 \text{ mL} = \frac{\text{Number of } E. coli \text{ colonies}}{\text{Volume of sample filtered (mL)}} \times 100$$

- 12.2** See the USEPA microbiology methods manual, Part II, Section C, 3.5, for general counting rules (Reference 18.2).

### 12.3 Reporting Results

**12.3.1** There should be at least three volumes filtered per sample. Report the results as *E. coli* per 100 mL of sample.

## 13.0 Method Performance

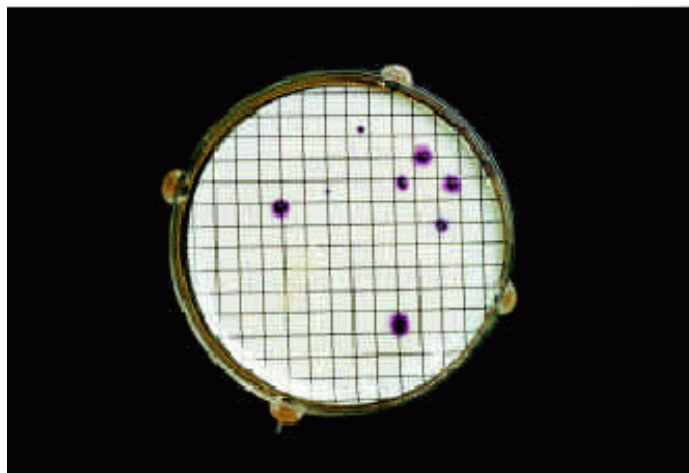
- 13.1** The false-positive and false-negative rates, reported for various environmental water samples, were <1% and 4%, respectively.

## 14.0 Reporting Results

- 14.1 There should be at least three volumes filtered per sample. Report the results as *E. coli* per 100 mL of sample.

## 15.0 Verification Procedure

- 15.1 Red or magenta colonies can be verified as *E. coli*. Verification of colonies may be required in evidence gathering and is also recommended as a means of quality control for the initial use of the test and for changes in sample sites, lots of commercial media, or major ingredients in media compounded in the laboratory. The verification procedure follows.



**Photo 1.** *Escherichia coli* colonies on modified mTEC agar. *E. coli* colonies are red to magenta.

- 15.2 Using a sterile inoculation loop, transfer growth from the centers of at least 10 well-isolated colonies to Nutrient Agar plates or slants and to Trypticase Soy Broth. Incubate the agar and broth cultures for 24 h at  $35 \pm 0.5^\circ\text{C}$ .
- 15.3 After incubation, remove a loopful of growth from the Nutrient Agar slant *with a platinum loop*, and deposit it on the surface of a piece of filter paper that has been saturated with freshly prepared Cytochrome Oxidase Reagent. If the spot where the bacteria were deposited turns deep purple within 15 seconds, the test is positive.
- 15.4 Transfer growth from the Trypticase Soy Broth tube to Simmons Citrate Agar, Tryptone Broth, and an EC Broth fermentation tube.
- 15.4.1 Incubate the Simmons Citrate Agar and Tryptone Broth for 48 h at  $35 \pm 0.5^\circ\text{C}$ .
- 15.4.2 Incubate the EC Broth at  $44.5 \pm 0.2^\circ\text{C}$  in a waterbath for 24 h. The water level must be above the level of the EC Broth in the tube.
- 15.4.3 Add 0.5 mL of Kovacs Indole Reagent to the 48 h Tryptone Broth culture, and shake the tube gently. A positive test for indole is indicated by a deep red color which develops in the alcohol layer on top of the broth.
- 15.4.4 *E. coli* is EC gas-positive, indole-positive, and oxidase-negative, and does not utilize citrate (*i.e.*, the medium remains green).

- 15.5** Alternately, commercially available multi-test identification systems may be used to verify colonies. Inoculate the colonies into an identification system for *Enterobacteriaceae* that includes lactose fermentation,  $\sigma$ -nitrophenyl- $\beta$ -D-galactopyranoside (ONPG), and cytochrome oxidase test reactions.

## **16.0 Pollution Prevention**

- 16.1** The solutions and reagents used in this method pose little threat to the environment when recycled and managed properly.
- 16.2** Solutions and reagents should be prepared in volumes consistent with laboratory use to minimize the volume of expired materials to be disposed.

## **17.0 Waste Management**

- 17.1** It is the laboratory's responsibility to comply with all federal, state, and local regulations governing waste management, particularly the biohazard and hazardous waste identification rules and land disposal restrictions, and to protect the air, water, and land by minimizing and controlling all releases from fume hoods and bench operations. Compliance with all sewage discharge permits and regulations is also required.
- 17.2** Samples, reference materials, and equipment known or suspected to have viable *E. coli* attached or contained must be sterilized prior to disposal.
- 17.3** Samples preserved with HCl to pH <2 are hazardous and must be neutralized before being disposed, or must be handled as hazardous waste.
- 17.4** For further information on waste management, consult "The Waste Management Manual for Laboratory Personnel" and "Less Is Better: Laboratory Chemical Management for Waste Reduction," both available from the American Chemical Society's Department of Government Relations and Science Policy, 1155 16th Street NW, Washington, DC 20036.

## **18.0 References**

- 18.1** Annual Book of ASTM Standards, Vol. 11.01, American Society for Testing and Materials, Philadelphia, PA 19103.
- 18.2** Bordner R., J.A. Winter, P.V. Scarpino (eds.). 1978. Microbiological methods for Monitoring the Environment: Water and Wastes, EPA-600/8-78-017. Office of Research and Development, USEPA.
- 18.3** Cabelli, V.J., A.P. Dufour, M.A. Levin, L.J. McCabe, and P.W. Haberman. 1979. Relationship of Microbial Indicators to Health Effects at Marine Bathing Beaches. *Am. J. Public Health.* 69: 690-696.
- 18.4** Improved Enumeration Methods for the Recreational Water Quality Indicators: Enterococci and *Escherichia coli*. 2000. EPA/821/R-97/004. Office of Science and Technology, Washington D.C.
- 18.5** Reagent Chemicals, American Chemical Society Specifications, American Chemical Society, Washington, DC. For suggestions of the testing of reagents not listed by the American Chemical Society, see Analar Standards for Laboratory Chemicals, BDH Ltd., Poole, Dorset, UK and the United States Pharmacopeia.
- 18.6** Test methods for *Escherichia coli* and Enterococci in Water by the Membrane Filter Procedure. 1985. EPA-600/4-85/076. Environmental Monitoring and Support Laboratory, Cincinnati, USEPA.