

106°45'

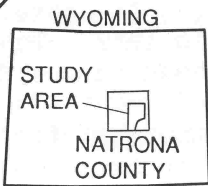
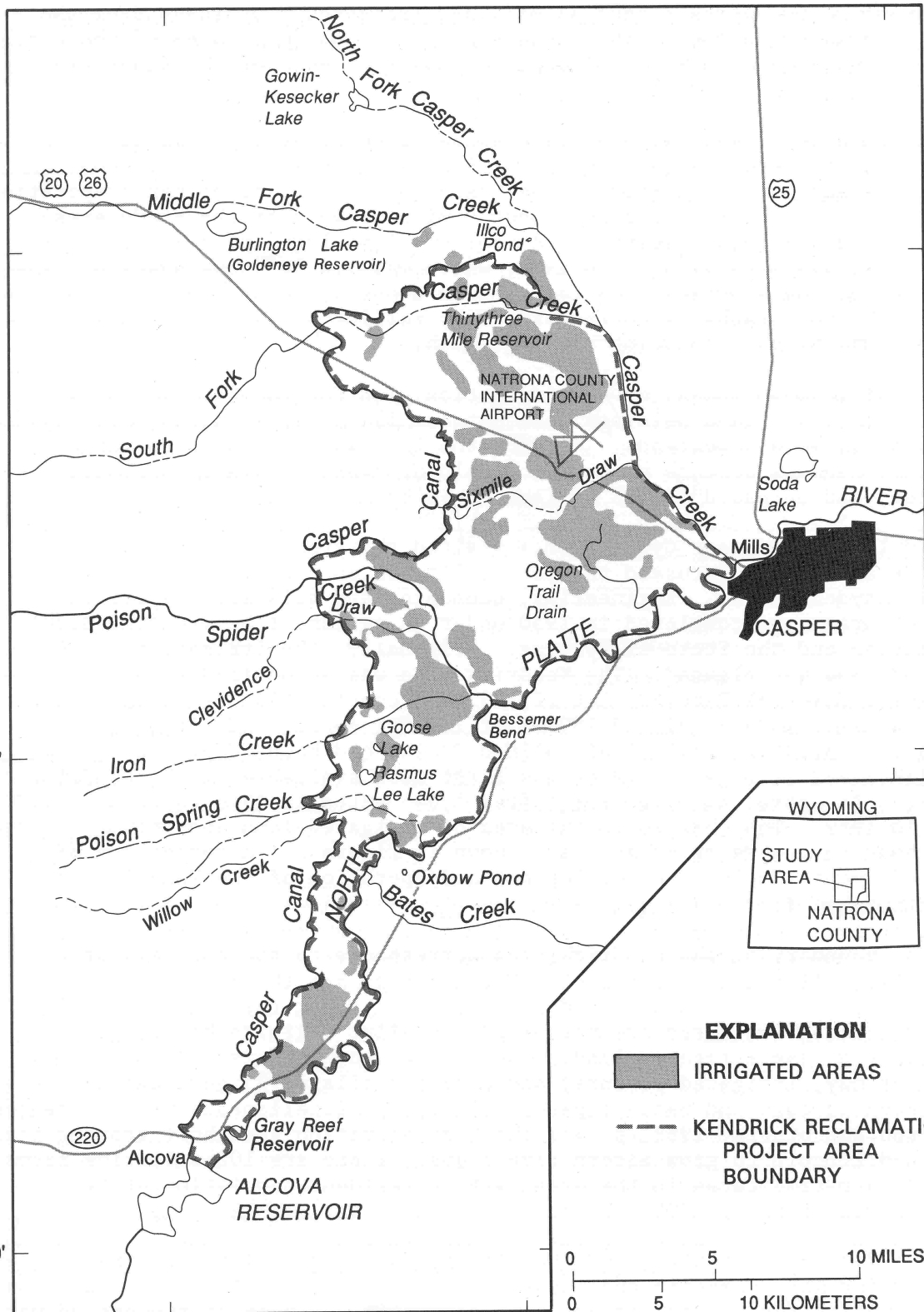
106°30'

106°15'

43°00'

42°45'

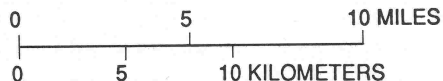
42°30'



EXPLANATION

■ IRRIGATED AREAS

--- KENDRICK RECLAMATION PROJECT AREA BOUNDARY



Base modified from U.S. Geological Survey 1:100,000 digital line graph map series: Casper, 1979; and Midwest, 1981
Universal Transverse Mercator projection