

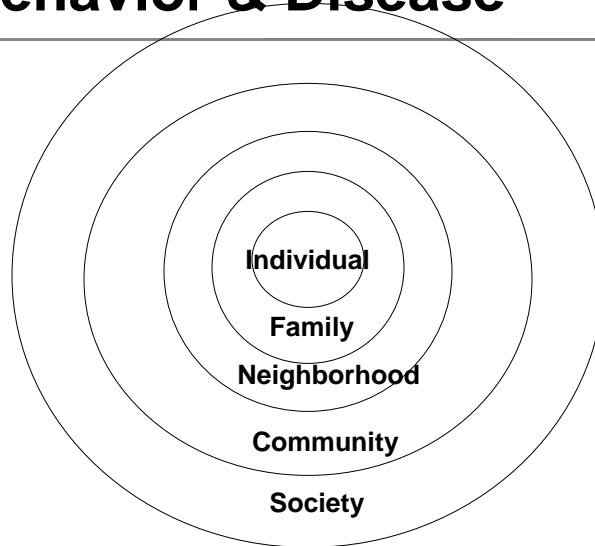
	The Value of the National Environmental Health Performance Standards to EH Programs
	Volusia County Florida

	Existing Tools
	<ul style="list-style-type: none">■ MAPP■ State/Programmatic Audits■ Internal Reviews

	<h2>EH Renaissance</h2>
	<ul style="list-style-type: none">■ 10 Essential Services■ National EH Performance Standards■ Geographic Information Systems■ Assessment, Monitoring■ Smart Growth■ Health Impact Assessment■ Cause/Effect Exposure/Disease Outcomes

	<h2>Population Based EH</h2>
	<ul style="list-style-type: none">■ Requires a strategic focus on the societal causes of ill health■ Societal or “Social Determinants of Health” are broad■ Changes in structural conditions can affect many individuals simultaneously and have broad and diverse impacts on multiple health outcomes■ Cost effective

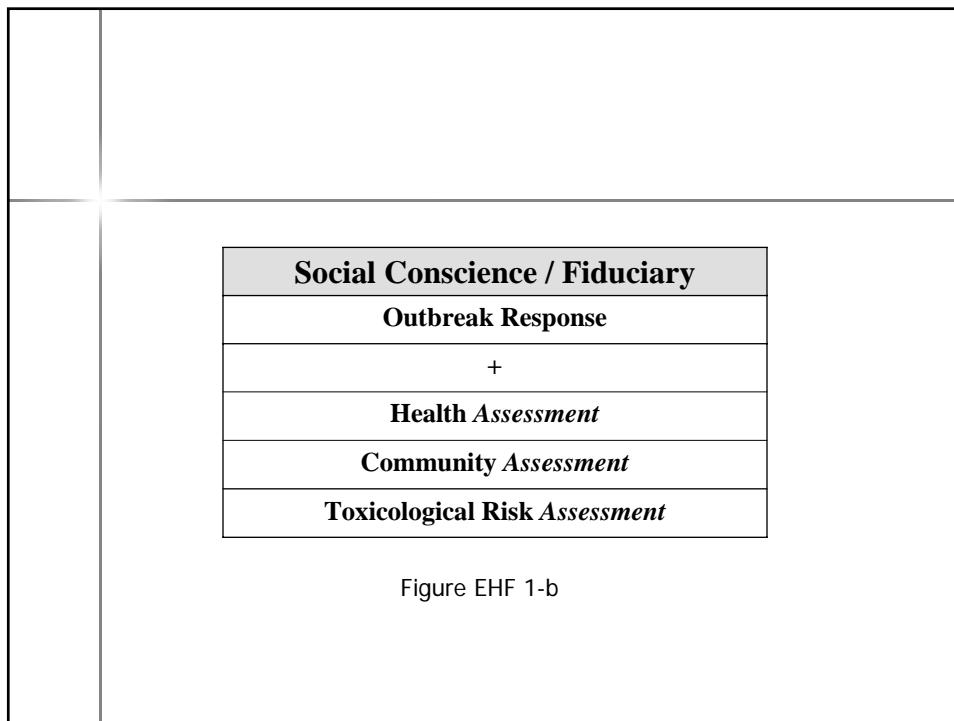
Levels of Determinants of Behavior & Disease

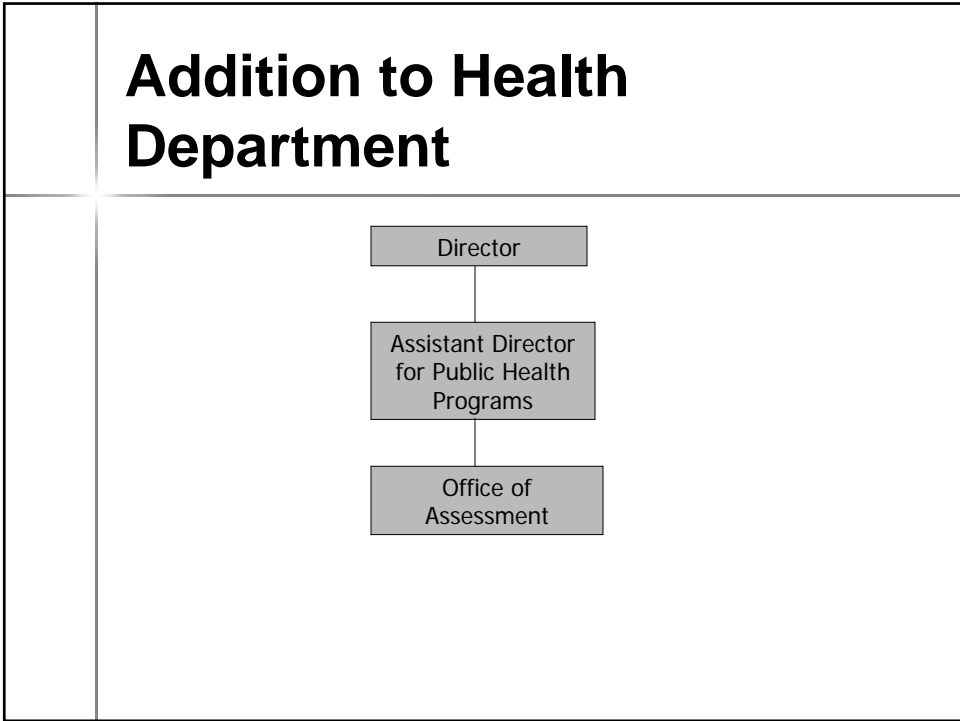


How this tool is used...

- Build agency capacity for essential services
- Build community accountability
- Consistent services
- ***Provide support for GR programs***
- ***Teach EH, local BOH, Health department directors, state level program, & stakeholders***

Future of Volusia County EH Financial Disaster Plan			
	50%	25%	150%
	Vulnerable – Possible scenario Tanning – Privatized Mobile Home Parks – gone or to other agency Small wells – gone S/T - Privatized or building dept. Pools – Privatized SDWA – Other agency	All in column 1 out In: Rabies Consulting SLE Consulting FBI Investigation Infectious disease investigation	Adding PH Priority Programs: Safety/Injury Sanitary Nuisance Public Relations & Marketing Tox risk assessment and OH Minimum Housing Health Assessment Reuse water regulation Surface water





	<h2 style="text-align: center;">Staff Comments</h2>
	<ul style="list-style-type: none"> ■ <i>“Since I was a young man of 19 I was attending EH classes. If you asked me back then what I would have been doing in an EH HD setting, I would have responded with #1 and #2. My response now would be #6.”</i> ■ <i>“I find #3 particularly important. The public should be made to be EH professionals.”</i> ■ <i>“We do #8 very well.”</i>