

Butterflies

Winged Beauties

Butterflies are found in almost all of Olympic National Park's diverse habitats. Some are even unique (endemic) to this isolated area. Many microhabitats in the park have yet to be surveyed and data on host and nectar plants is incomplete. Continued research will help us learn more about these ephemeral, beautiful animals. Look for the showy adults, as well as other stages: eggs, larva (caterpillar), or pupa (chrysalis) on host plants. To enhance your experience, bring binoculars for close up views and a notebook to record your observations.

Swallowtails and relatives, Family: PAPILIONIDAE

Clodius Parnassian, *Parnassius clodius claudians*: common in a variety of habitats
Olympic Parnassian, *Parnassius smintheus olympiannus*: high elevations where *Sedum* grows
Anise Swallowtail, *Papilio zelicaon zelicaon*: very common in most habitats
Western Tiger Swallowtail, *Papilio rutulus*: very common in most habitats
Pale Tiger Swallowtail, *Papilio eurymedon*: not as common as other swallowtails



Western Tiger Swallowtail
(2.5 - 3.5")

Whites, Marbles, Sulphurs, Family: PIERIDAE

Pine White, *Neophasia menapia tau*: seen high in conifer tree tops
Spring White, *Pontia sisymbrii flavitincta*: northeastern alpine areas
Western White, *Pontia occidentalis occidentalis*: not common
Margined White, *Pieris marginalis marginalis*: in and around wooded areas
Cabbage White, *Pieris rapae*: non native, introduced species common in gardens
Sara's Orangetip, *Anthocharis sara flora*: common in eastern open habitats
Clouded Sulphur, *Colias philodice eriphyle*: documented only from northeastern areas
Western Sulphur, *Colias occidentalis occidentalis*: open areas around forests at all elevations

Gossamer Wings, Family: LYCAENIDAE

Purplish Copper, *Lycaena helloides helloides*: common and often abundant in almost all habitats
Lilac-Bordered Copper, *Lycaena nivalis browni*: mid to high elevations in eastern areas
Mariposa Copper, *Lycaena mariposa mariposa*: openings in eastern montane areas
Makah Copper, *Lycaena mariposa charlottensis*: coastal bogs
Sylvan Hairstreak, *Satyrrium sylvinum nootka*: not common in wetlands and canyons
Bramble Green Hairstreak, *Callophrys perplexa perplexa*: open areas in forests
Johnson's Hairstreak, *Mitoura johnsoni*: old growth forests, larvae feed on mistletoe
Cedar Hairstreak, *Mitoura grynea plicataria*: not common but found near cedar trees
Brown Elfin, *Incisalia augustinus iroides*: lowland to mid elevations in eastern areas
Moss's Elfin, *Incisalia mossii mossii*: sea level to high elevation in eastern areas
Hoary Elfin, *Incisalia polia polia*: lowlands in southeastern areas
Gray Hairstreak, *Strymon melinus atrofasciatus*: low to mid elevations in eastern areas
Western Tailed Blue, *Everes amyntula amyntula*: all elevations in northeastern areas
Spring Azure, *Celastrina argiolus echo*: common in eastern and southern forests
Silvery Blue, *Glaucoopsyche lydamus columbia*: moist open areas in eastern areas
Anna's Blue, *Lycaeides anna vancouverense*: high elevations of northeastern areas
Greenish Blue, *Plebejus saepiolus aehaja*: wet, montane northeastern areas
Boisduval's Blue, *Icaricia icariodes blackmorei*: found where lupine abounds
Spangled Blue, *Icaricia acmon spangelatus*: low to high elevations in northeastern areas
Arctic Blue, *Agriades glandon megalis*: high elevations, hence the common name



Egg, caterpillar and chrysalis



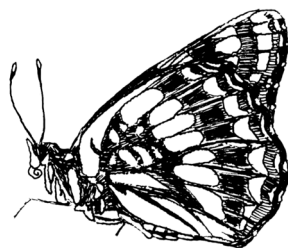
Brush-Footed Butterflies, Family: NYMPHALIDAE

Great Spangled Fritillary, *Speyeria cybele pugetensis*: low to mid elevations in eastern areas
Zerene Fritillary, *Speyeria zerene* new ssp.?: an unnamed subspecies found in eastern mountains
Hydaspe Fritillary, *Speyeria hydaspe rhodope*: relatively common in wet, montane areas
Western Meadow Fritillary, *Boloria epithore chermocki*: very common in open areas
Arctic Fritillary, *Boloria chariclea rainieri*: common in openings from mid to high elevations
Field Crescent, *Phyciodes pulchellus owimba*: common in meadows from mid to high elevations
Mylitta Crescent, *Phyciodes mylitta mylitta*: common from sea level to mid elevations
Chalcedona Checkerspot, *Euphydryas chalcedona* new ssp.?: an unnamed subspecies
Edith's Checkerspot, *Euphydryas editha colonia*: high elevations in northeastern areas
Satyr Anglewing, *Polygonia satyrus*: common in many habitats
Green Comma, *Polygonia faunus rusticus*: forests in most areas
Hoary Comma, *Polygonia gracilis*: common at high elevations in most areas
Oreas Anglewing, *Polygonia oreas silenus*: edges of old growth forests in eastern areas
California Tortoiseshell, *Nymphalis californica*: mid to high elevations of most areas
Mourning Cloak, *Nymphalis antiopa*: not common in eastern riparian and open areas
Milbert's Tortoiseshell, *Nymphalis milberti*: where nettles grow in eastern low to mid elevations
American Lady, *Vanessa virginiensis*: rare in low elevations in southwestern areas
West Coast Lady, *Vanessa annabella*: common in many habitats
Painted Lady, *Vanessa cardui*: very common in all habitats
Red Admirable, *Vanessa atalanta rubric*: very common in all habitats
Lorquin's Admiral, *Limenitis lorquini*: common from sea level to mid elevations
Common Wood Nymph, *Cercyonis pegala*: common in prairies, meadows and open areas
Vidler's Alpine, *Erebia vidleri*: mid to high elevation meadows and open areas
Olympic Arctic, *Oeneis chryxus valerata*: ENDEMIC, found only at high elevations

Skippers, Family: HESPERIDAE

Silver-spotted Skipper, *Epargyreus clarus californicus*: open areas at lower to middle elevations
Northern Cloudywing, *Thorybes pylades*: not common
Dreamy Duskywing, *Erynnis icelus*: lowland to mid elevations in southeastern areas
Persiums Duskywing, *Erynnis persius*: common in open areas
Two-Banded Checkered Skipper, *Pyrgus ruralis ruralis*: common in spring at all elevations
Arctic Skipper, *Carterocephalus palaemon magnus*: mid elevations in northeastern areas
Common Branded Skipper, *Hesperia comma hulbirti*: ENDEMIC, found at high elevations
Sonoran Skipper, *Polites sonora sonora*: high elevation subspecies found in northeastern areas
Dog Star Skipper, *Polites sonora siris*: low elevation prairies and non-native meadows
Woodland Skipper, *Ochlodes sylvanoides sylvanoides*: extremely common in open areas
Ozette Skipper, *Ochlodes sylvanoides* new ssp.?: perhaps new subspecies from Ozette area
Dun Skipper, *Euphyes vestris vestris*: common in a variety of open areas in southern areas

NOTE: Butterfly scientific names are subject to a great deal of discussion among experts, some tend to lump subspecies, others to split. Common names are also included, but be aware multiple common names may be associated with a single species.



Egg, Caterpillar, Chrysalis



Lorquin's Admiral (2 - 2.6")
All drawings by Kristi Knowles