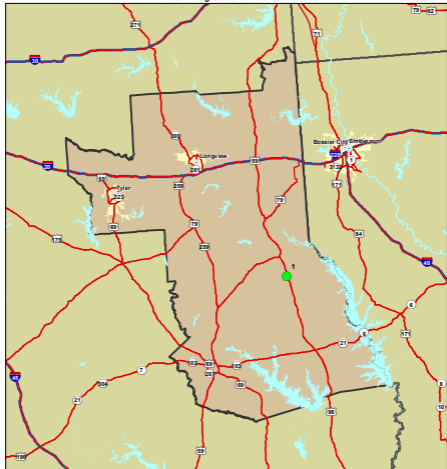




## Structurally Deficient Bridges on the National Highway System Texas - Congressional District 01



Consult your state DOT for the most up-to-date status of bridges.

Area of Detail



Note: The bridges displayed on this map represent the results of a combined BTS/FHWA effort to geocode bridges from the FHWA's National Bridge Inventory (NBI). With the exception of Kentucky and Pennsylvania, whose most current data is 2006, all data is from the 2007 NBI. Of the 184 structurally deficient NHS bridges in Texas, 15 could not be geolocated because of insufficient data. Structurally deficient bridges are not necessarily unsafe; all public road bridges receive regular safety inspections. The bridges listed were categorized as structurally deficient at the time the maps were developed.

<b>Bridge Label</b>	<b>Structure ID</b>	<b>Bridge Description</b>	<b>Location Description</b>
1	112100006306031	US 96	1.70 MI N OF SH 87