



Exterior Signs

- **Illuminated**
- **Non-illuminated**
- **Directional**
- **Building Identification**
- **Wall Mounted**
- **Letters**
- **Traffic**

Section 2: Exterior Signs

▪ Planning	Pages 2-2-1 through 2-2-8
▪ Helpful Hints	Pages 2-3-1 through 2-3-2
▪ Names	Pages 2-4-1 through 2-4-2
▪ Overview	Pages 2-5-1 through 2-5-9
▪ Illuminated Exterior Signs	Pages 2-6-1 through 2-6-44
▪ Non-Illuminated Exterior Signs	Pages 2-7-1 through 2-7-84
▪ Specification	Pages 2-8-1
▪ Construction	Pages 2-9-1 through 2-9-12
▪ Installation	Pages 2-10-1 through 2-10-13

Planning an Exterior Sign Program

The development of an effective working exterior sign program requires the coordination of several interlaced criteria.

For an effective exterior sign program you have to take into account to the following:

1. Character and configuration of the roadway system.
2. How do visitors currently drive around the site.
3. Where do you want visitors to park?
4. What is the desired path of travel on the roadway system for visitors?
5. What is the desired path of travel on the roadway system for employees and deliveries?
6. Location of buildings on the facility campus in relation to roads, parking and walkways.
7. Location of building entrances.
8. Parking plan for visitors, handicapped and employees.
9. Weather... like wind and snow.
10. Location of electricity, its availability and voltage.
11. Landscaping and the irrigation system.
12. Adequate light on and around directional signs.
13. Placement of signs in locations where people are expecting them to be.
14. Which signs can have permanent messages and which ones need to be changeable.

These elements help establish the basis of a clear sign program that communicates and informs in a direct and simple manner.

A sign program for a campus, that works well, is one that has been planned as an integrated whole. All the way from the main identification sign, directional signs, building and building entrance identification through to the parking lot signs.

Types of Signs

The main identification sign for a medical center should be a large scale illuminated sign. This can be an internally illuminated monolith sign or a masonry wall with letters that are illuminated with floodlights. Urban facilities main identification sign or letters may be directly on the building and should be directly illuminated as well.

Internally illuminated signs should be considered for those locations where important information and directions need to be communicated at night as well as the day. This would typically be the main identification sign, the main directional signs at the entrance to the site and along the primary path of travel, buildings and entrances that have public activity in the early morning, late afternoon and evening.

A non-illuminated sign that is illuminated with floodlights can be

effective a night. Typically this is a less expensive way to obtain an illuminated sign, but the ongoing maintenance will be considerably higher as ground based lights frequently get damaged.

Non-illuminated signs with reflective letters will function quite well for secondary signs at night. It is a good practice to make all the exterior signs have reflective letters as that will insure the best possibility of being read regardless of a signs importance.

Every site has different climate conditions that affect an exterior sign program. Considerations for snowfall and frost line will have an impact on post length and footing depth. For areas where there is a lot of snow, the post on signs should be taller so the sign panels do not become covered with snow. How much taller should be evaluated by site locations typical snow fall.

Types of Signs **cont.**

Monument signs should be typically reserved for use at the main entrance and along the principal drive to the main entrance at the medical center. Monument signs are more expensive than post and panel signs, but provide a more professional appearance at

the main entrance. Use of post and panel signs through out the remaining campus for directional signs and building identification is the most practical approach to signing.

Sizes of Signs

Signs that are to be read from a moving car need to be larger than signs that are read by a driver that is stopped or parked. As the speed of a car increases, the size of a sign needs to increase. Signs with important messages also need to be larger. Additionally, the further the distance the sign needs to be read, the larger it needs to be.

A simple explanation on the importance of size ... A sign that is too small is an annoyance to everyone, because they can't read it. A sign that is too large

will never be an annoyance because everyone can read it.

Signs directed to pedestrians can be smaller. But, they still have to be large enough to be read. Signs placed close to a walkway can be smaller in scale, but care must be taken to not make them so small that people don't notice them.

If in doubt regarding a size decision, choose the next larger size.

Size of Lettering

Signs that are to be read from a moving car need to have larger lettering than signs that are read by a driver that is stopped or parked. As the speed of a car increases, the size of the lettering on a sign also needs to increase. Signs with important messages need to also have larger lettering.

Additionally, the further the distance the sign needs to be read, the larger the lettering needs to be. Remember,

lettering on a sign that is too small is an annoyance, because it can't be read it.

Signs directed to pedestrians can have smaller test. But, the lettering still has to be large enough to be read.











If in doubt regarding the size of lettering to use, choose the next larger size.

Viewing Distance Guide

The following charts are to provide assistance in determining the size of lettering to be used in relation to the distance that a sign is going to be read.

These charts are general and there may be situations that would require lettering larger than what is indicated in the chart for a given distance of viewing.

Text

Viewing Distance Up To:		Letter Height		Application
7.5 M	25'	25 mm	1"	
12 M	40'	40 mm	1 1/2"	
15 M	50'	50 mm	2"	
24 M	80'	75 mm	3"	
33 M	110'	100 mm	4"	
48 M	160'	150 mm	6"	
75 M	250'	225 mm	9"	
97.5 M	325'	300 mm	12"	
150 M	500'	450 mm	18"	
195 M	650'	600 mm	24"	

Symbols

Viewing Distance Up To:		Symbol Height	
7.5 M	25'	75 mm	3"
10.5 M	35'	100 mm	4"
15 M	50'	125 mm	5"
18 M	60'	150 mm	6"
30 M	100'	200 mm	8"
34.5 M	115'	225 mm	9"
39 M	130'	250 mm	10"
45 M	150'	300 mm	12"

Wayfinding

“Wayfinding” is a term that in recent years has been used to describe the process of finding a destination in the built environment. Signs play an active role in this process by providing the primary form of communication in way finding

In developing a way finding system for the exterior of a medical center campus or the interior of a building you need to follow some common guidelines.

One first needs to identify the paths of travel from originating points to destinations.

On the exterior of a campus this involves the roadway system from the main drive entry to the campus to the main entrance of the building to which patients and visitors are seeking a service. While this is a primary path, a secondary primary path is from the visitor parking lot to the main entrance

or the entrance with services to which the individual is seeking.

Identifying destinations people drive to, where they park and where they walk to is the process of identifying the paths of transit. Way finding is then communicating to people along this pathway, with appropriate directional signs.

The intersections along the vehicle roadway and pedestrian pathway system need to be identified in their importance for communication. Major high traffic intersection will require more communication than smaller secondary intersections. The environments in which these intersections present themselves also affects the way finding program.

One must look at the path of travel and the decision points that are necessary to reach the end point and where these

Wayfinding cont.

decision points are located. At these decision points information must be communicated to the driver in a priority of need.

The priority of need is defined as those departments or services that have the highest percentage of people seeking them. This high demand information then needs to be communicated with the highest priority on exterior directional signs.

Secondary information or information that applies to a small percentage of individuals that visit a campus also needs to be evaluated in regard to its importance. Typically a driver can only read 2 to 4 messages on a directional sign. Any information that is beyond or greater than this is simply not read. Prioritization of communication of information would then in most cases cause the secondary or minor information to be left off the sign because it is not useful.

In planning a directional sign program for pedestrians one needs to take into account similar objectives that are done for a roadway directional sign program. Major walkways need to be identified in their respective intersections where the paths of travel split to reach various services and entrances.

People that are walking have the opportunity to read more messages than a driver so pedestrian directional signs can contain up to 8 listings of information. More than 10 listings on a sign results in a sign so large that it is no longer readable and the viewer simply cannot sort through all the information presented.

“You Are Here” maps can sometimes aid in the way finding process but care must be taken to make sure the map is simple and configured in a manner in which it makes very easy to understand. The orientation of these maps, and the amount of information on them, play a critical role on the understanding of the viewer of what they are looking at.

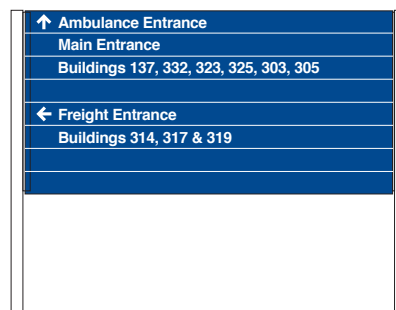
“You Are Here” maps need to be placed in a strategic location where the viewer has a clear orientation to the site or campus based upon the view of the map that they are seeing. Remember, once the viewer leaves the map, the visual image in their memory will quite quickly erode. And, once they make the first turn all their orientation will be gone.

Placement of a “You Are Here” map needs to be at a location on the campus where the viewer can make connection with a major visual object. This can be a very prominent building or large architectural or environmental objects such as a water tower or monuments.

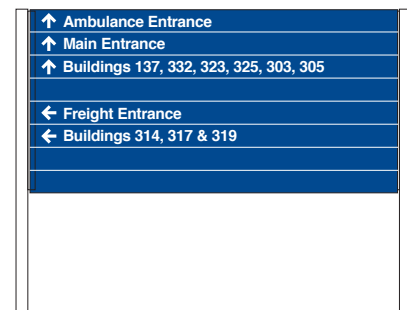
Arrows

The proper use of arrows on directional signs is important to insure that the reader quickly understands the correct directional information.

Grouping all the information together that is in one direction and using one arrow is preferred. Using an arrow for each message makes the sign difficult to read.



Preferred



Not Recommended

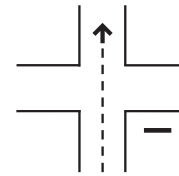
Arrows cont. Arrows should be placed in such a manner that they precede the message. This allows the reader to understand direction first and information second. It also allows the arrows to be visually separated from text.

Arrows should always be larger in size than the text they are affiliated with. For example, a 4-1/2" arrow is what would be used with a 3" capital letter size text.

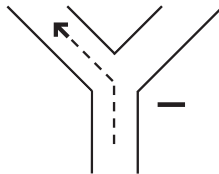
Straight Ahead



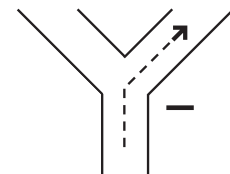
Straight Ahead



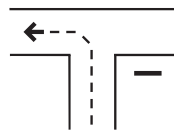
Ahead on Left



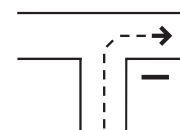
Ahead on Right



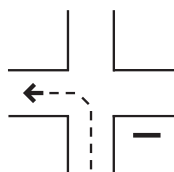
Left



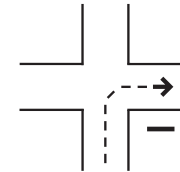
Right



Left



Right



Sign Placement Exterior signs function to communicate to both drivers and pedestrians and their placements need to be planned relative to the intended viewer. Sign visibility to the user is a principal objective and that is the basis of correct sign placement.

A sign that is directing pedestrians can be placed close to a walkway. Major pathway intersections are important locations to assist people who are new to a site and are trying to find their way around.

Signs that are to be read from a car moving down a road need to be large and clearly visible. Poorly placed signs, that are intended to communicate to drivers, can actually create traffic hazards. Also, remember that if a sign has too much information, the placement will have to allow for a driver to stop or slow to a very low speed.

Correct placement of signs will usually mean that fewer signs are required. Too many signs can create a cluttered appearance and increase the difficulty for a viewer to find the particular information they are seeking. Colors and material finish of buildings need to be taken into consideration as this impacts the visibility of signs.

Sign Placement Care also needs to be taken to place signs in a manner that allow clear viewing. Placement of signs so trees and shrubs do not obscure them is critical. It is also critical that signs are not placed in locations that obscure a driver's visibility of vehicular traffic and pedestrians.

Coordination needs to take place with things like irrigation systems, electrical service and other underground utilities.

Proper placement is an important part of a well-planned program

Placement Guidelines Following are general guidelines for placing signs to viewed from an approaching vehicle as well as for mounting signs for pedestrian viewing. Guidelines for specific sign types are shown in their respective sections.

Straight Ahead: Sign placement must be within the approaching driver's immediate cone-of-vision. Drivers cannot be expected to turn their heads to read a sign. Signs mounted more than 12 M (40 feet) off the roadway because of special circumstances may require use of a larger panel to increase readability because the sign is outside the normal cone-of-vision.

Perpendicular: The sign face should be perpendicular to the approaching viewer. Never place a sign parallel to passing traffic.

Right Side: Place signs on the right side of the roadway whenever possible. Drivers are not conditioned to look to the left side of the road for driving information. An exception to this rule is the use of a double-face Standard Identification sign mounted perpendicular to a facility entrance roadway sign should be sized and placed with clear target value and readability from both directions.

Distance Legibility: All signs must be clearly legible from the distance at which they are to be read. The viewing distance guide delineates the appropriate text size.

Advance Warning: Signs on roadways that communicate a desired reaction, must be placed in advance of the intersection to afford a safe distance for reaction to and execution of the maneuver.

Viewing Angle: Mount signs at eye level. The height of the average viewer's eye

level is 1650 mm (5'-6") standing, and 1350 mm (4'-6") driving a car. Signs placed for viewing from long distances will be mounted higher than those in the immediate foreground. Mounting height is measured from the ground level to the bottom edge of the sign panel.

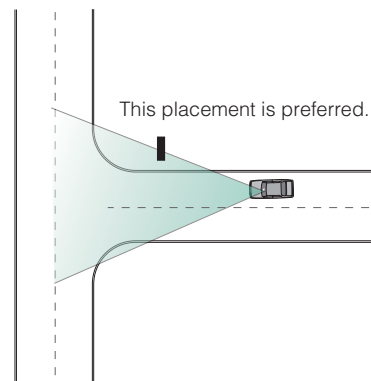
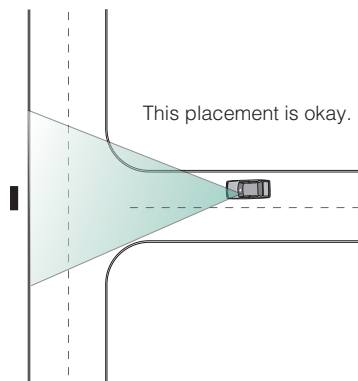
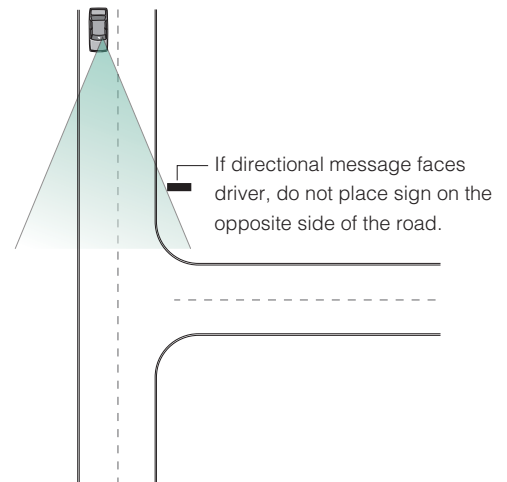
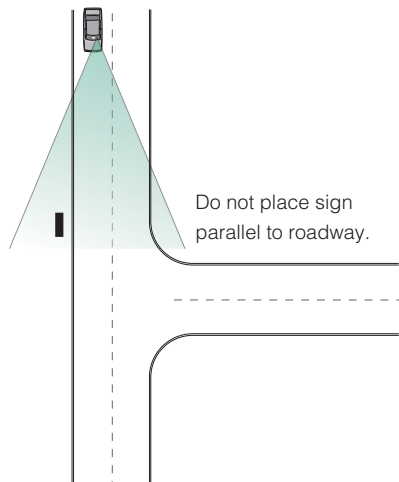
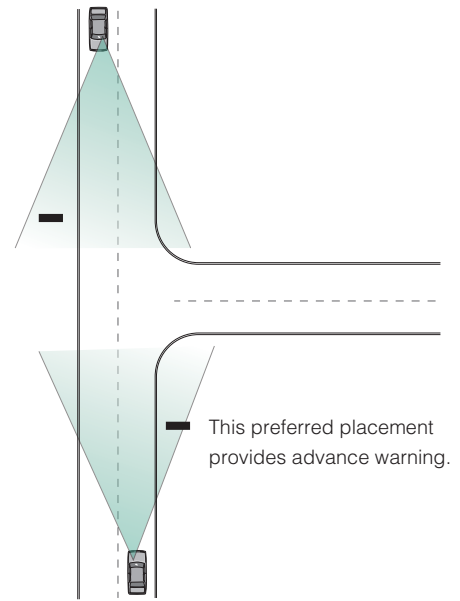
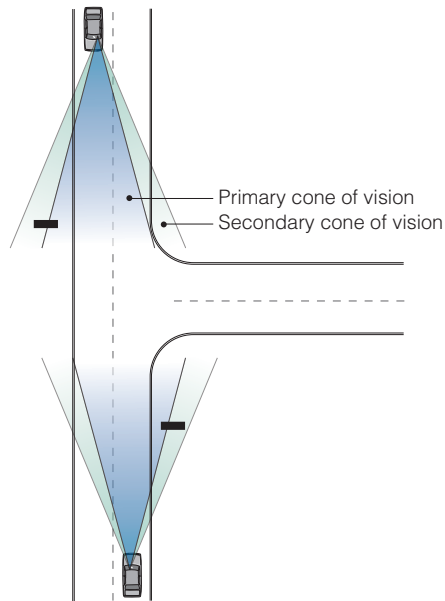
For signs mounted along roadways, the grade of the road is considered ground level. When ground mounted signs on two posts are placed on sloping or inclined grades, adjustments must be made to the post lengths and mounting heights. Extreme differences between post lengths should be minimized whenever possible.

Spacing: Signs must be located with respect to other signs. Mounting sites should be carefully selected so that groups of signs are placed without creating a cluttered appearance. Also, drivers must be given time to read and react to one sign before another is presented.

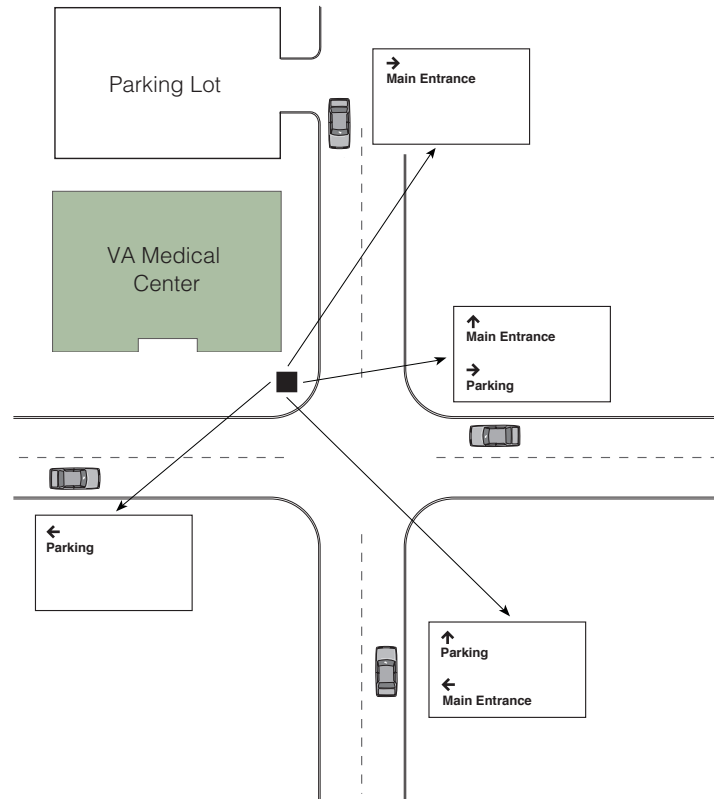
Site Preparation: Placement must be carefully considered to ensure that the sign fits the location without major regarding. It may be necessary to clear some shrubs or bushes or relocate an obstruction.

Field Test: An effective way to determine a sign placement location is to place the actual sign in the proposed location for verification. This is relatively simple for pedestrian signs; they are viewed from relatively short distances. For signs viewed from a moving vehicle, testing should include driving the approach from which it is viewed to verify the appropriateness of the proposed location. A cardboard or brown paper banner (which is the same size as the proposed sign) can be used instead of the sign to check placement against the criteria listed above.

Placement Guidelines cont.



Placement Guidelines cont.



Existing Sign Program

Before implementing a new sign program, perform a thorough evaluation of the demolition requirements of the current sign program and the effects and impact on the facilities landscaping and irrigation system.

Old sign footings do not typically have to be totally removed. They should however be demolished to at least 1 foot below grade.

Check to see what is required to patch, seal and repair building penetrations and surfaces exposed as a result of removal of signs or letters. Repairs should be planned to match adjoining surface.

Make sure the sign demolition scope of work requires the contractor to close off any live electrical connections. Remove existing conductors and conduit to the nearest junction box and make it safe.

Be sure to clearly identify signs that are supposed to remain. It is especially important to identify markers and signs that relate to special objects or displays that maybe on the medical center campus or on a building.

DO NOT remove any traffic signs without having the replacement signs available and installed at the same time the old signs are removed.

The following are some general “Do’s & Don’ts” guidelines that one can refer to when developing a sign program.

key information or instructions that will hopefully reduce common errors that are made when planning and programming an exterior sign program.

This is not intended to be a training section of the guide, but to provide

General Guidelines

- Never use text smaller than 3” capital letter height when a sign is intended to be read from a moving car.
 - Text intended to be read by pedestrians should be a minimum of 1 1/2” capital letter height.
 - Signs do require maintenance. Cleaning and waxing will extend the life of a sign program.
 - Use text (words) which are familiar, easy to understand and comfortable to the viewer.
 - Always use the same words throughout the sign program.
 - All sign messages need to be a minimum of 24” above grade.
 - When selecting a background color for the signs, seek a complementary color to the buildings on campus.
 - If overhead signs are used, make sure they have adequate clearance for trucks. Adequate clearance can be interpreted to be 15’-0”.
-

Type of Sign to Use

- Always consider the landscaping surrounding a sign when determining a sign’s size. It is important that shrubs and other plants do not hide or obscure the sign.
 - Stacking bar signs, if possible, should always have a blank bar between two different sets of directional information.
 - Lettering and sign panel size should be appropriate for the distance and speed at which a sign is viewed.
-

Size of Sign to Use

- Signs intended for a moving vehicle need to be larger and require larger text than a sign intended for a pedestrians.
 - Consideration should be given to the use of a facility (i.e., whether a department or building offers night time services) when determining if a sign should be illuminated or not.
-

Message Content

- Keep sign messages brief.
 - Unnecessary information on signs will confuse the viewer.
 - Typically, all signs, with the exception of directional signs, should convey no more than one concept or thought.
 - Use text (words) that can be quickly read by the viewer. And use the same words throughout the sign program.
 - On directional and informational signs only provide information necessary to make a decision at that particular location.
 - Whenever possible, messages should be presented using positive information.
-

Message Content cont.

- On directional signs, do not anticipate decisions that can be made later. Unnecessary or premature information will confuse the reader.
 - Messages placed on signs should be concise, preferably with no more than seven to ten words.
 - For signs to be read from a moving car, take into account the speed of the car. At a slow speed the driver may be able to read 7 or 8 words. At a faster speed they will only be able to read 4 or 5.
-

Message Layout

- Use upper and lower case text whenever possible. Upper and lower case text is easier to read and understood faster than text in all capital letters.
 - Line-spacing between two different messages should be greater than line-spacing between lines of the same multiple-line message group.
 - Text should not be run right up to the edge of the sign.
 - If a line text needs to be reduced in order to fit on a sign, use only commonly recognized abbreviations, reduce the number of words or reduce the size of the type for the entire message. DO NOT condense the type face.
 - The most important message should appear as the first line text and the most important directional information should be at the top of the sign.
-

Placement of Signs

- Signs should, if at all possible, always be perpendicular to the intended viewer.
- Position signs with a clear line of sight from the viewing point to the sign face.
- Typically a driver gathers visual information by viewing to the right first.
- Keep directional signs on the same side of the street that the driver is driving.
- Always evaluate a sign's location at night as well as in the daylight. Lighting conditions and visibility may change at night making a particular location unsuitable.
- All signs should be placed in a manner that will be clearly visible to driver all times of the year. For example, make sure that snow removal doesn't bury signs.
- Signs that receive spray from irrigation sprinklers will show oxidation from the minerals in the water resulting in a poor appearance. The life of the sign will also be considerably shortened.
- Always consider the landscaping surrounding a sign when determining a sign's location. It is important that trees, shrubs and other plants do not obscure the sign.
- Do not place signs in locations where people may walk into them. Don't place signs any closer than 12" to a walkway.

Description & Use

The following layouts depict the various ways that facility names are to be shown on the main identification sign. In all cases, note that there is a hierarchy in the presentation. The “VA Logos” and “Department of Veteran Affairs” is always on the top of the sign and in larger letters than the rest of the name. VISN identification is always at the bottom of the sign and has the smallest letters.

Message Layout A depicts consolidated medical center locations.

Message Layout B depicts congressionally mandated named facilities.

Message Layout C depicts the typical facility naming practice.

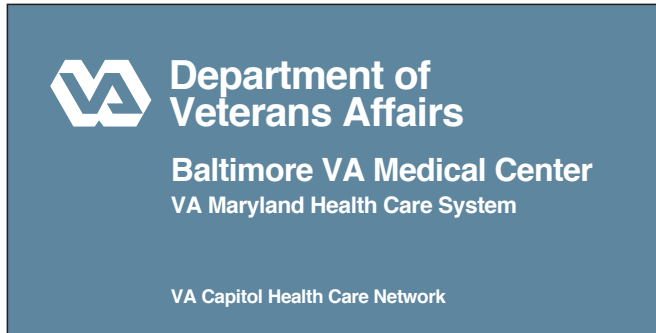
Message Layout D depicts the combined VHA and VBA locations.

Message Layout E depicts the independent VBA Regional Office locations.

Message Layout F depicts the large Outpatient Clinic locations.

Message Layout G depicts the Community Based Outpatient Clinic locations

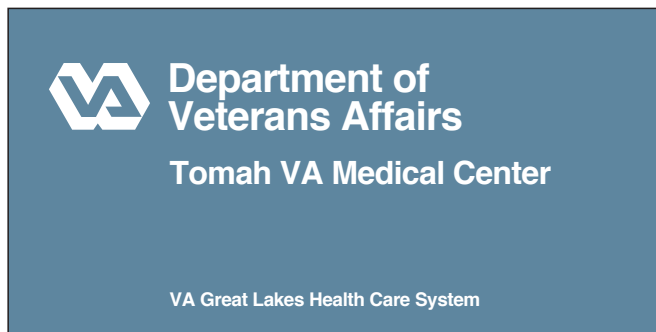
Message Layout A



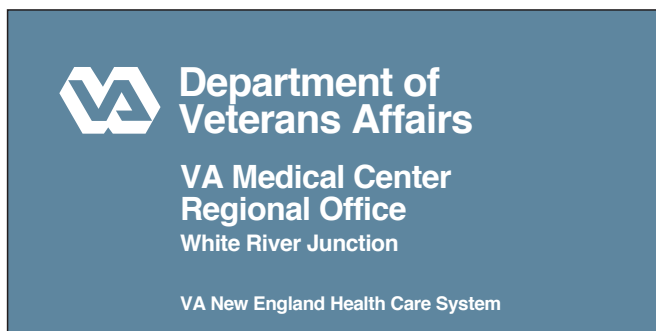
Message Layout B



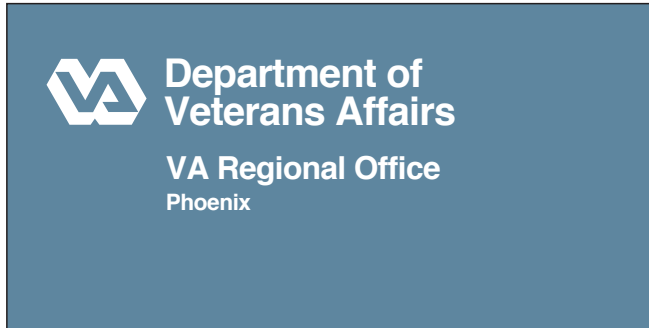
Message Layout C



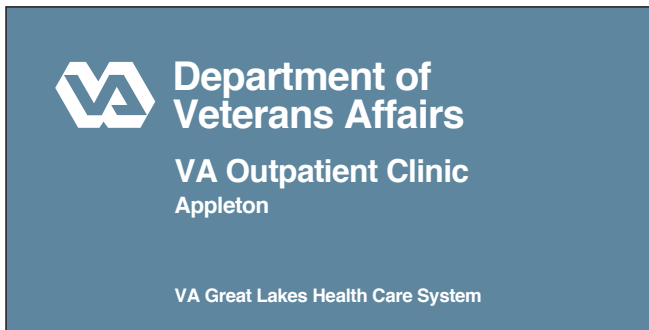
Message Layout D



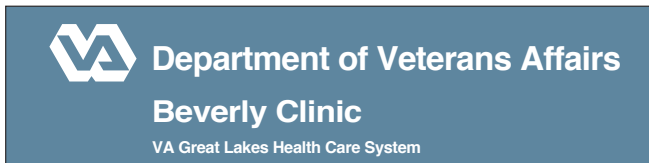
Message Layout E



Message Layout F



Message Layout G



This section of the Sign and Environmental Graphic Program Guide provides for all the types of exterior signs that would be necessary to sign individual buildings to a complete medical center campus or a off site clinic building.

Included are illuminated and non-illuminated signs for identification and direction as well as signs traffic control and parking.

This section is divided into three parts. The first part identifies internally illuminated signs and the second part is non-illuminated signs. The third part covers way-finding, construction, engineering , installation and helpful hints.

The following Overview illustrates the various types of signs in this section. The individual pages on each Sign Type provide more specific information and detailed layouts.

Illuminated Exterior Sign Designations

Each sign in the program guide has been give a specific sign type number designation. This designation provide a common description that can be referenced when programming a site and ordering signs. The following explains how the sign type designations are derived.

EI - 03 .01 A

E Designates an exterior sign.

I Identifies that the sign is internally illuminated.

03 Two digit numbers identifies a particular sign type family like the “signs for use in identifying an Ambulance Entrance”.

.01 The two digit number following the period identifies a specific sign within the sign family.

A The letter designates a specific sign configuration, version and/or layout for graphics.

Internally Illuminated Exterior Sign Overview

Sign Type EI-01

Illuminated Monument Sign for Medical Center Identification

EI-01.01

Large horizontal monument sign

EI-01.02

Standard horizontal monument sign

EI-01.03

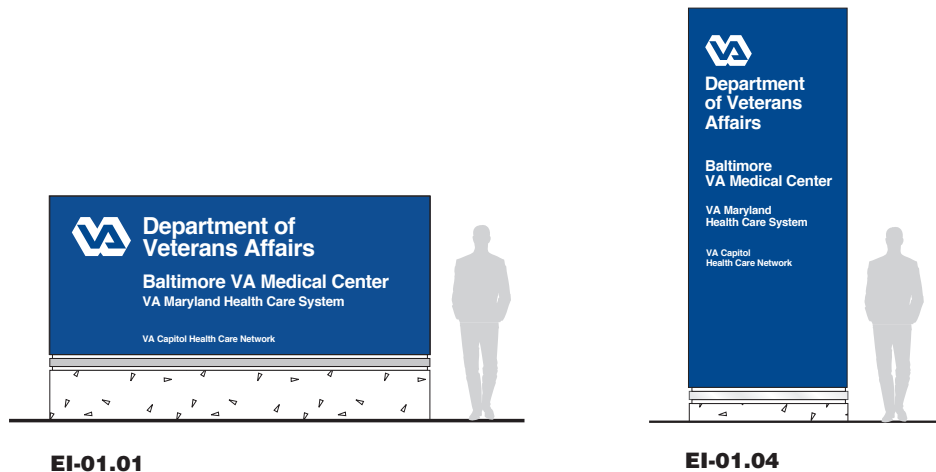
Small horizontal monument sign

EI-01.04

Standard vertical monument sign

EI-01.05

Small vertical monument sign



Overview

Illuminated Exterior Signs

Sign Type EI-02

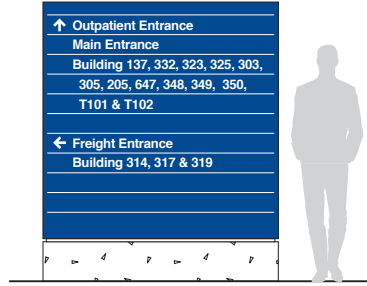
Illuminated Directional Monument Sign with Stacking Text Modules

EI-02.01

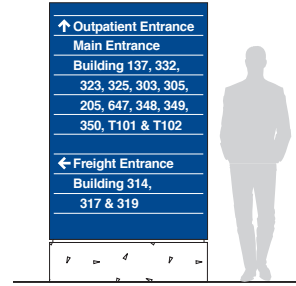
Large directional monument sign with stacking strips - 10 strips

EI-02.02

Small directional monument sign with stacking strips - 10 strips



EI-02.01



EI-02.02

Sign Type EI-03

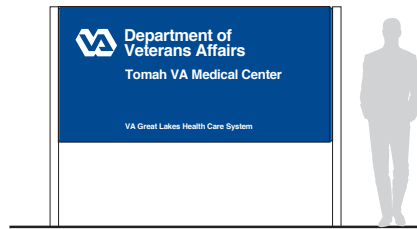
Illuminated Post and Panel Sign for Identification and Information

EI-03.01

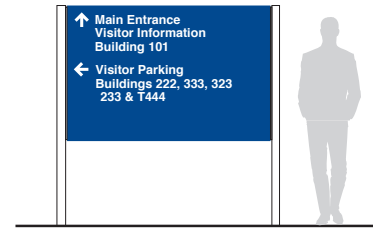
Post and panel sign for medical center identification

EI-03.02

Standard auto oriented post and panel sign



EI-03.01



EI-03.02

Sign Type EI-04

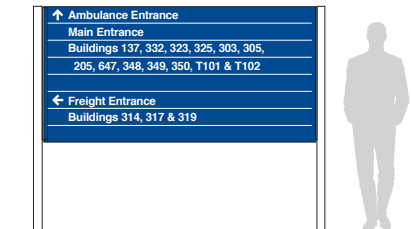
Illuminated Post and Stacking Bar Sign for Directional Information

EI-04.01

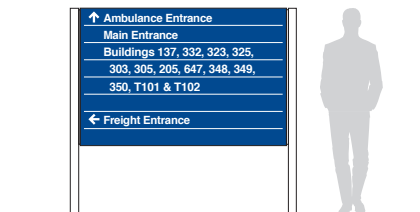
Large/long auto oriented stacking bar directional sign - 6 to 8 bars

EI-04.02

Standard auto oriented stacking bar directional sign - 5 to 8 bars



EI-04.01



EI-04.02

Sign Type EI-06

Illuminated Wall Mounted Signs

EI-06.01

Overhead wall mounted sign

EI-06.02

Large size wall mounted sign

Nursing Home Care



EI-06.01

Department of Veterans Affairs
Outpatient Center



EI-06.02

Overview

Illuminated Exterior Signs

Sign Type EI-08

Ambulance Entrance Signs

EI-08.01

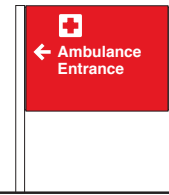
Overhead wall mounted sign



EI-08.01



EI-08.02



EI-08.03

Sign Type EI-09

Dimensional Letters and Logo

EI-09.06

Logo and dimensional letter

EI-09.07

Logo and dimensional letter

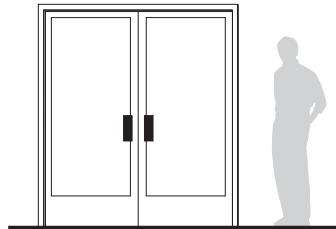
EI-09.08

Logo and dimensional letter

EI-09.09

Logo and dimensional letter

Outpatient Entrance



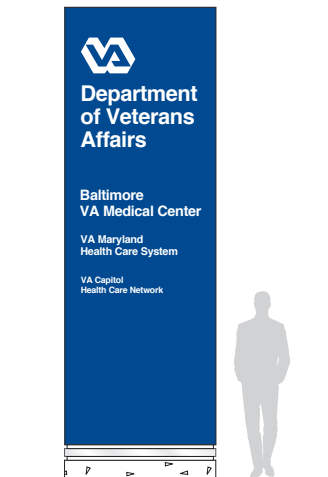
EI-09.06



Medical Center

Sign Type EI-14

4 Sided Monument Sign for Medical Center Identification



EI-14

Overview

Illuminated Exterior Signs

Sign Type EI-15

4 Sided Monument Sign with Directional Information for Medical Center Identification

EI-15.01

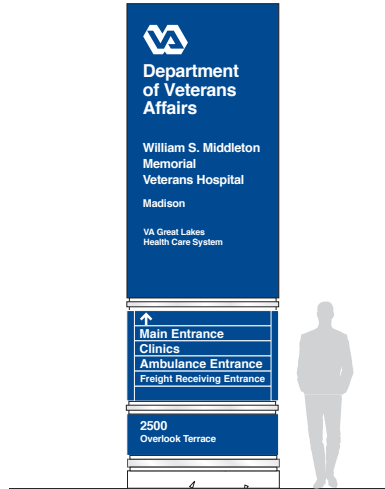
Large 4-sided monument sign with stacking directional panels

EI-15.02

Standard 4-sided monument sign with stacking directional panels

EI-15.03

Small 4-sided monument sign with stacking directional panels



EI-15.01



EI-15.02

Sign Type EI-16

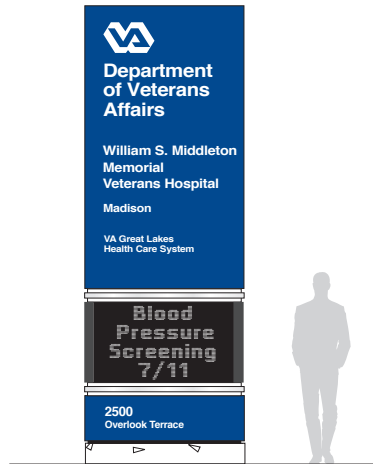
Monument Sign for Medical Center Identification with Electronic Message Center

EI-16.01

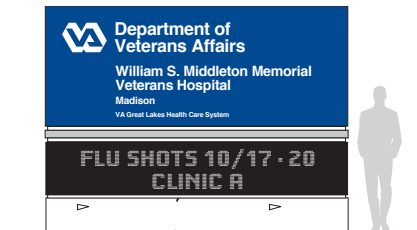
Large monument sign with Electronic Message Center

EI-16.02

Standard monument sign with Electronic Message Center



EI-16.01



EI-16.02

Non-Illuminated Exterior Sign Designations

Each sign in the program guide has been given a specific sign type number designation. This designation provides a common description that can be referenced when programming a site and ordering signs. The following explains how the sign type designations are derived.

EN - 12 .01 A

E Designates an exterior sign.

N Identifies that the sign is non-illuminated.

12 Two digit numbers identify a particular sign type family like the "signs for use in Parking Lots".

.01 The two digit number following the period identifies a specific sign within the sign family.

A The letter designates a specific sign configuration, version and/or layout for graphics.

Sign Type EN-02

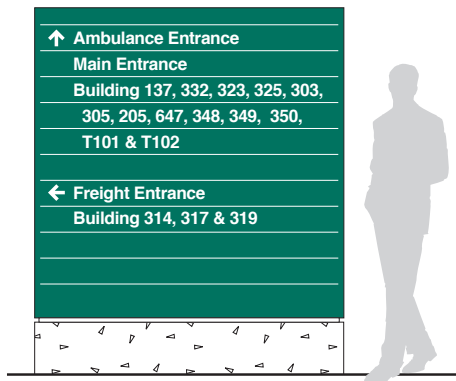
Directional Monument Sign with Stacking Text Modules

EN-02.01

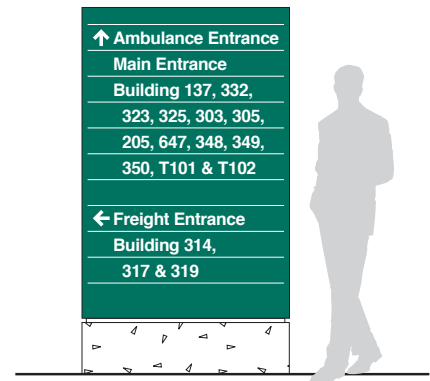
Large directional monument sign with stacking strips - 10 strips

EN-02.02

Small directional monument sign with stacking strips - 10 strips



EN-02.01



EN-02.02

Sign Type EN-03

Post and Panel Sign for Identification and Information

EN-03.02

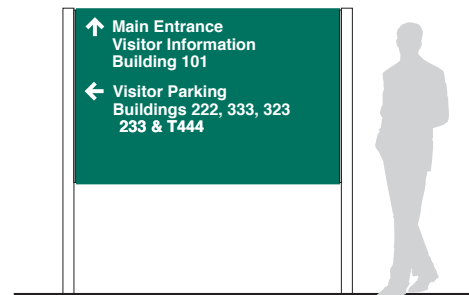
Standard auto oriented post and panel sign

EN-03.03

Small auto oriented post and panel sign



EN-03.02



EN-03.03

Overview

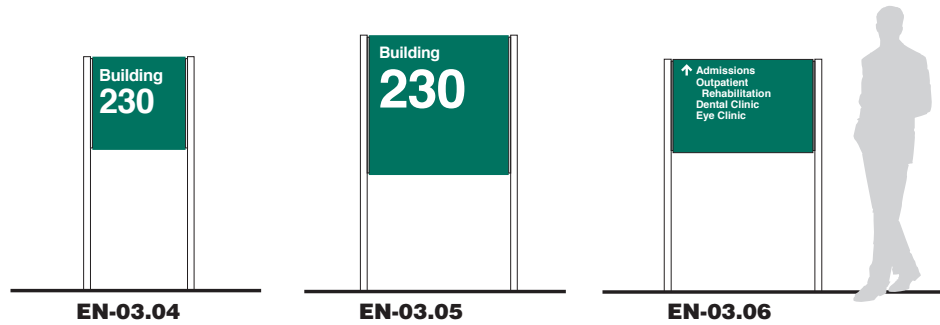
Non-Illuminated Exterior Signs

Sign Type EN-03 (Continued)

EN-03.04
Pedestrian oriented post and panel sign

EN-03.05
Large auto oriented building number / identification post and panel sign

EN-03.06
Pedestrian oriented building number / identification post and panel sign



Sign Type EN-04

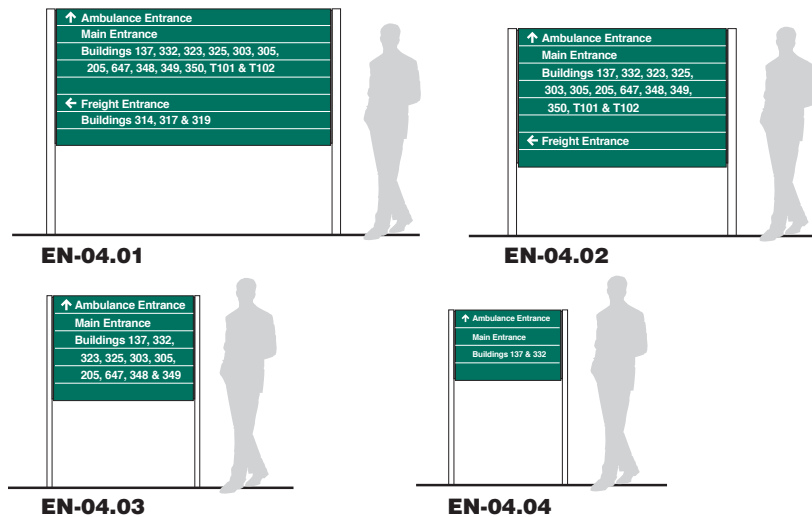
Post and Stacking Bar Sign for Directional Information

EN-04.01
Large/long auto oriented stacking bar directional sign - 6 to 8 bars

EN-04.02
Standard auto oriented stacking bar directional sign - 5 to 8 bars

EN-04.03
Small auto oriented stacking bar directional sign - 4 to 6 bars

EN-04.04
Pedestrian oriented stacking bar directional sign - 2 to 4 bars



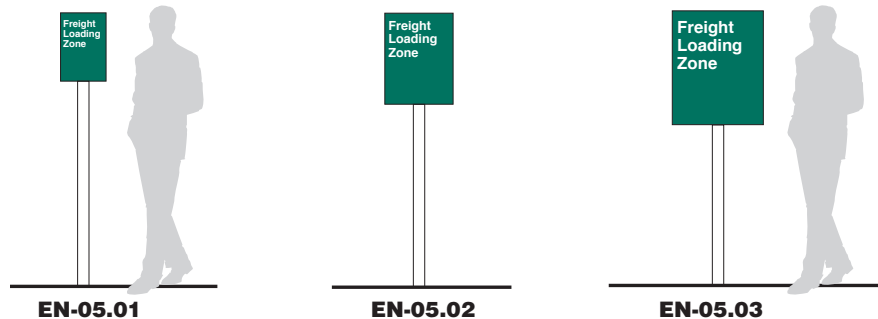
Sign Type EN-05

Single Post Identification, Informational and Directional Sign

EN-05.01
Large single post identification, informational and directional sign

EN-05.02
Standard single post identification, informational and directional sign

EN-05.03
Small single post identification, informational and directional sign



Overview

Non-Illuminated Exterior Signs

Sign Type EN-06

Wall Mounted Signs

EN-06.01

Overhead wall mounted sign

EN-06.02

Large size wall mounted sign

EN-06.03

Large size wall mounted sign with stacking strips

EN-06.04

Medium size wall mounted sign

EN-06.05

Medium size wall mounted sign with stacking strips

EN-06.06

Regular size wall mounted sign

EN-06.07

Small size wall mounted sign

EN-06.08

Minor informational wall mounted sign

EN-06.09

Minor informational wall mounted sign

Spinal Rehabilitation
Clinic Entrance



Sign Type EN-07

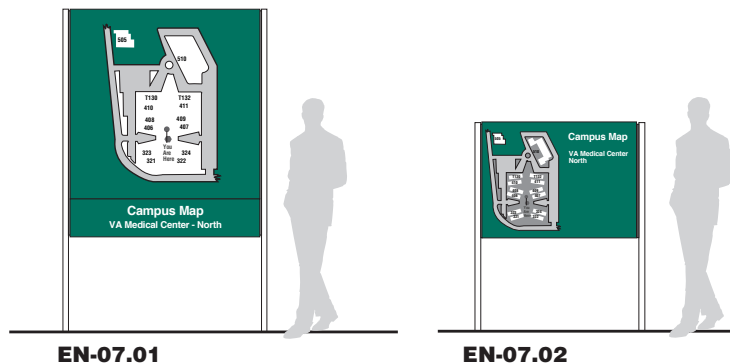
Medical Center Campus Map Sign

EN-07.01

Large campus orientation map

EN-07.02

Small campus orientation map



Overview

Non-Illuminated Exterior Signs

Sign Type EN-08

Ambulance Entrance Signs

EN-08.01

Overhead wall mounted sign



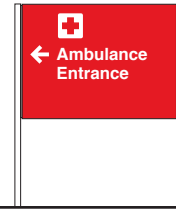
EN-08.02

Wall mounted sign



EN-08.03

Post and panel sign



EN-08.01

EN-08.02

EN-08.03

Sign Type EN-09

Dimensional Letters and Logo

EN-09.01

Dimensional letter

Outpatient Entrance

EN-09.02

Dimensional letter

EN-09.03

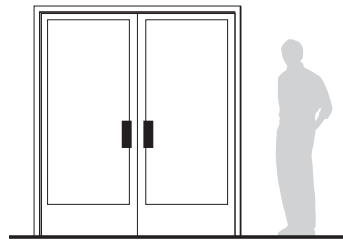
Dimensional letter

EN-09.04

Logo and dimensional letter

EN-09.05

Logo and dimensional letter



EN-09



Medical Center

Sign Type EN-10

Traffic Regulatory Signs

EN-10.01

Stop (R1-1)



EN-10.02

Do Not Enter (R5-1)

EN10.1



EN10.2



EN10.3



EN-10.03

Yield (R1-2)

EN10.4



EN10.5



EN10.6



EN-10.04

Speed Limit (R2-8)

EN10.7



EN10.8



EN10.9



EN-10.05

Keep Right (R4-7A)

EN-10.06

One Way (R6-2L, R6-2R)

EN-10.07

No Right/Left Turn (R3-1R, R3-2L)

EN-10.08

No U Turn (R3-4)

EN-10.09

Pedestrian Crossing (W11-2A)

EN-10.01

Overview

Non-Illuminated Exterior Signs

Sign Type EN-11

Street Signs

EN-11.01

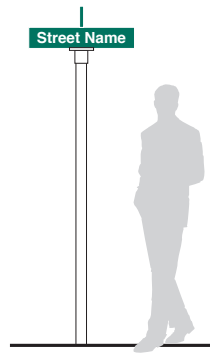
Tall double blade

EN-11.02

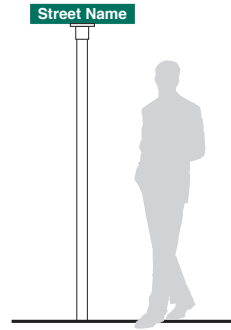
Tall single blade

EN-11.03

Pylon



EN-11.01



EN-11.02



EN-11.03

Sign Type EN-14

Building Entrance
Door Identification



EN-14

Sign Type EN-15

National Cemetery

EN-15.01

Post and single panel

EN-15.02

Post and double panel

EN-15.03

Post and triple panel

EN-15.04

Post and panel
floral regulation

EN-15.05

Post and panel
informational

EN-15.06

Section marker

EN-15.07

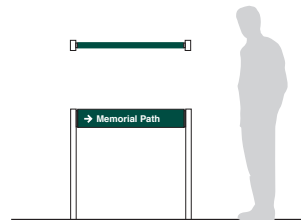
Post and panel
traffic regulatory

EN-15.08

Post and panel
street sign

EN-15.09

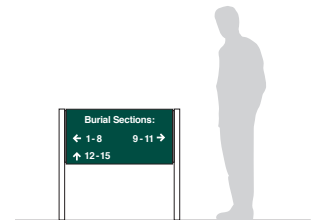
Pylon street sign



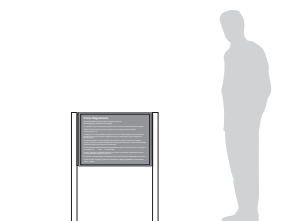
EN-15.01



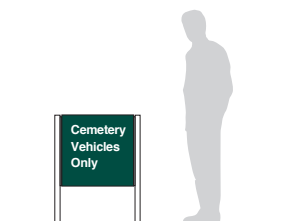
EN-15.02



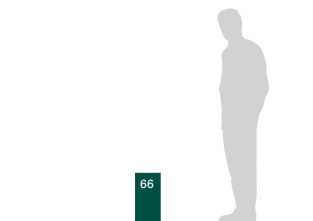
EN-15.03



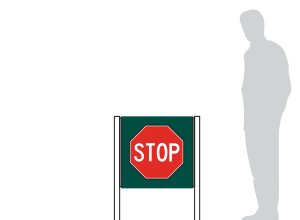
EN-15.04



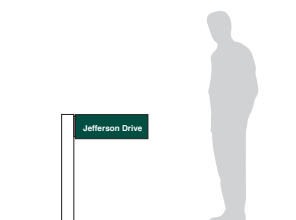
EN-15.05



EN-15.06



EN-15.07



EN-15.08



EN-15.09

Illuminated Exterior Signs

EI-01.01

Illuminated Exterior Sign

Site Monument

Size

Sign Face:
1524 mm H x 3658 mm W
(5' 0" H x 12' 0" W)

Description & Use

Internally illuminated large horizontal free standing monument sign for identifying a medical center or the medical center's main entrance drive.

The base can be constructed of concrete or other masonry material in a color and texture that will provide a coordinated architectural look with the building finishes of the medical center.

Message Configuration

(Refer to message layout drawing for dimensions)

Specific message configuration will vary depending on the particular name of a facility. Variations to the presentation of a facility's name will need special approval from Washington DC.

Graphic Process

Illuminated, routed out copy backed with white translucent acrylic.

Colors

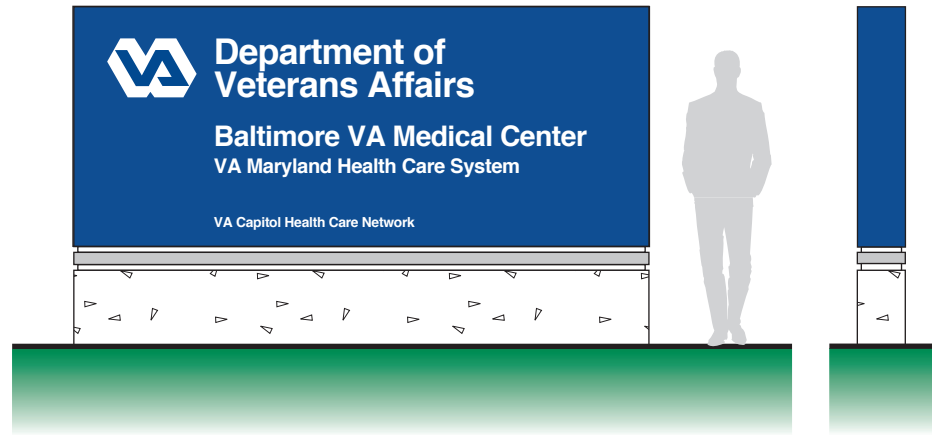
Text: White T3
Background: Refer to Color Chart
Accent: Refer to Color Chart

Recommendations

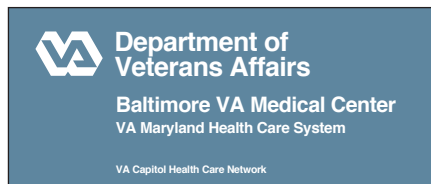
Position sign so drivers have a clear, unobstructed view of the sign. Keep landscaping around the sign low and position sprinklers so they project away from the sign.

On-off illumination of sign can be controlled through the use of a timer, manual or photoelectric switch. Consult with sign fabricator at time of order for appropriate method to use.

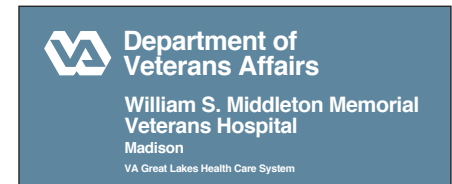
On-off illumination of sign can be controlled through the use of a timer, manual or photoelectric switch. Consult with sign fabricator at time of order for appropriate method to use.



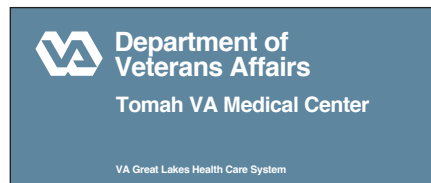
Message Layout A



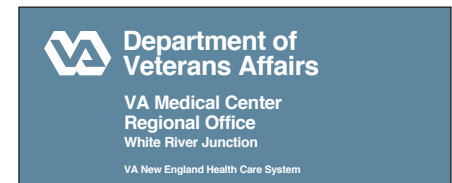
Message Layout B



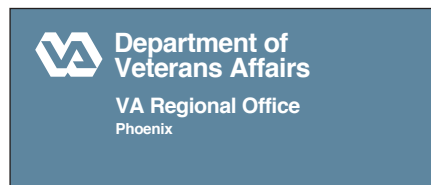
Message Layout C



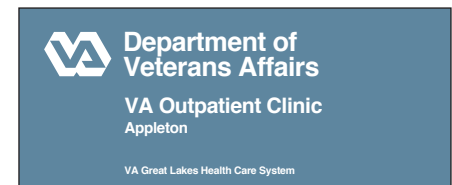
Message Layout D



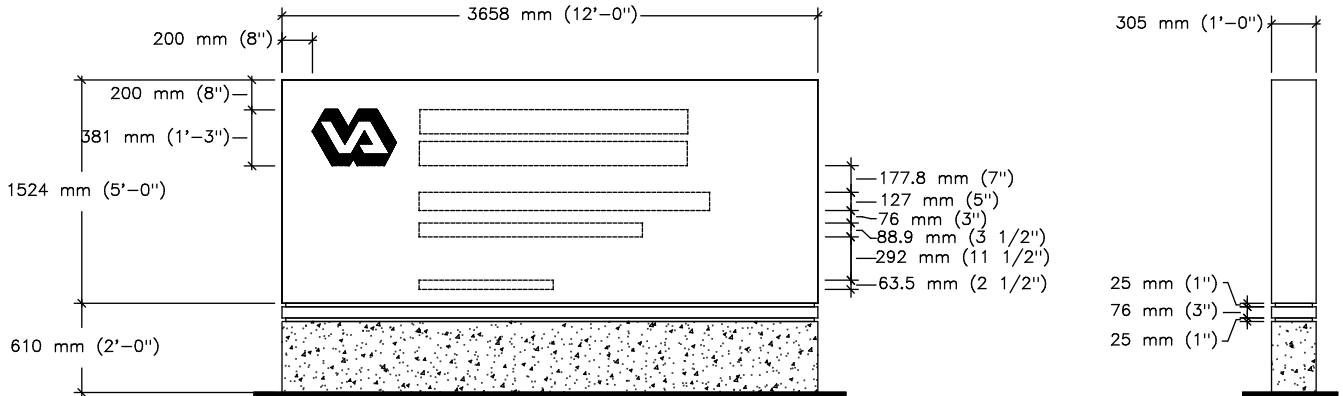
Message Layout E



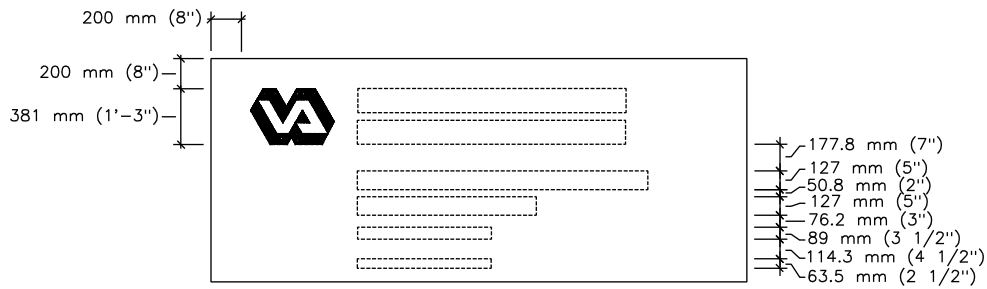
Message Layout F



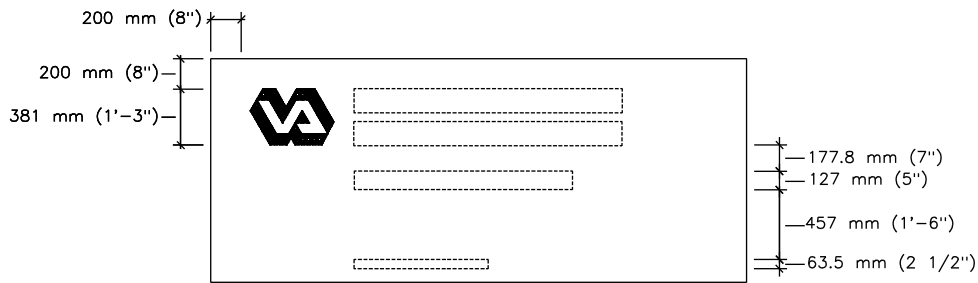
Site Monument



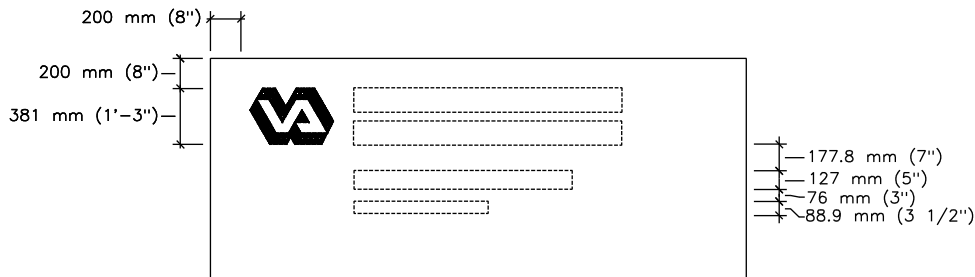
Message Layout A & F



Message Layout B & D



Message Layout C



Message Layout E

EI-01.02

Illuminated Exterior Sign

Site Monument

Size

Sign Face:
1219 mm H x 3048 mm W
(4' 0" H x 10' 0" W)

Description & Use

Internally illuminated horizontal free standing monument sign for identifying a medical center or the medical center's main entrance drive.

The base can be constructed of concrete or other masonry material in a color and texture that will provide a coordinated architectural look with the building finishes of the medical center.

Message Configuration

(Refer to message layout drawing for dimensions)

Specific message configuration will vary depending on the particular name of a facility. Variations to the presentation of a facility's name will need special approval from Washington DC.

Graphic Process

Illuminated, routed out copy backed with white translucent acrylic.

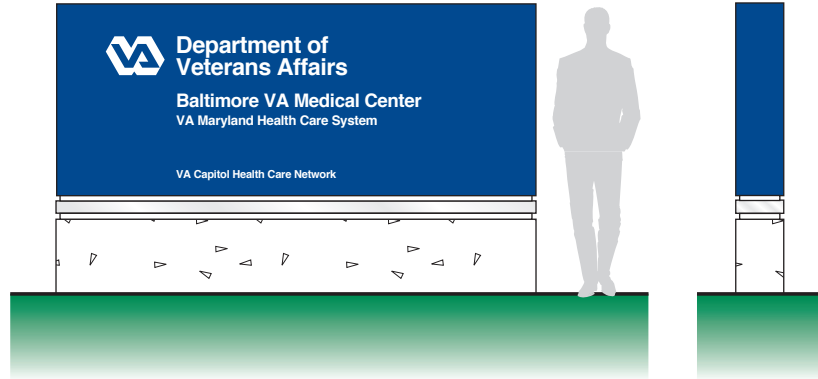
Colors

Text: White T3
Background: Refer to Color Chart
Accent: Refer to Color Chart

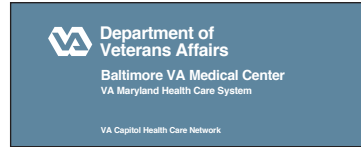
Recommendations

Position sign so drivers have a clear, unobstructed view of the sign. Keep landscaping around the sign low and position sprinklers so they project away from the sign.

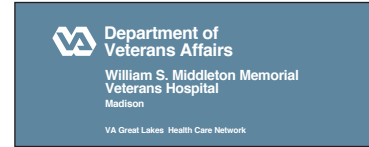
On-off illumination of sign can be controlled through the use of a timer, manual or photoelectric switch. Consult with sign fabricator at time of order for appropriate method to use.



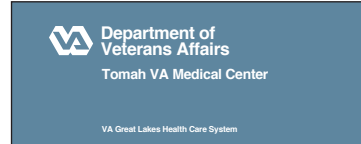
Message Layout A



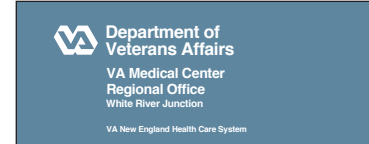
Message Layout B



Message Layout C



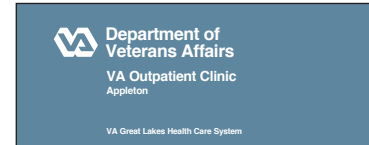
Message Layout D



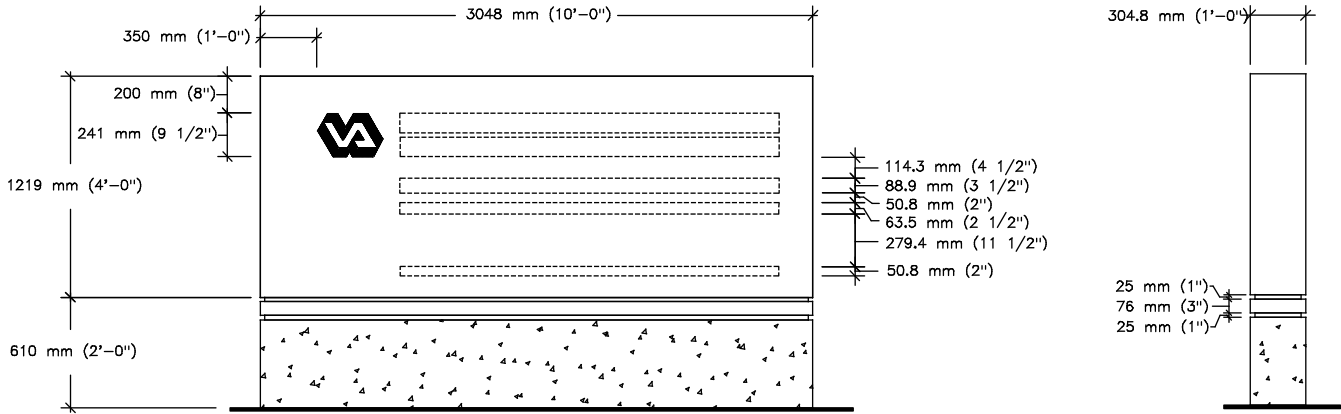
Message Layout E



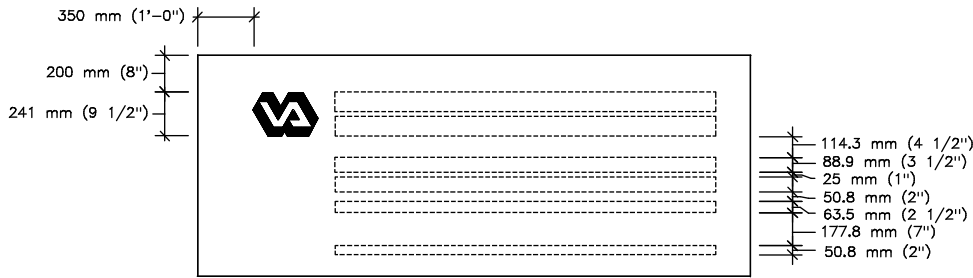
Message Layout F



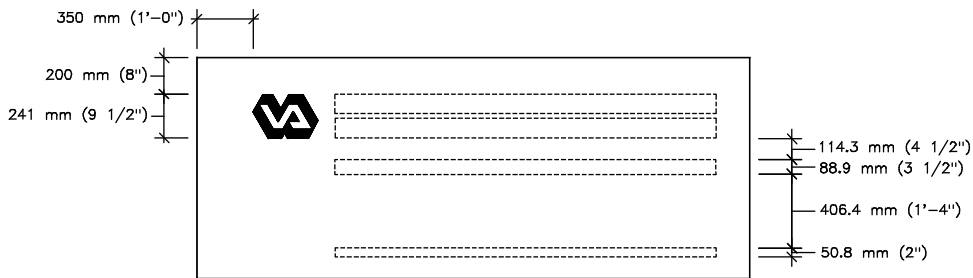
Site Monument



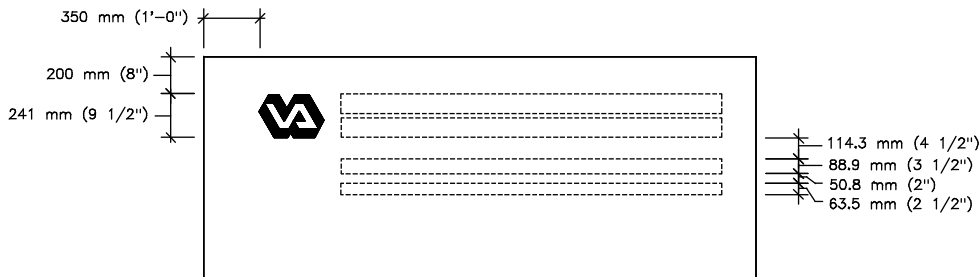
Message Layout A & F



Message Layout B & D



Message Layout C



Message Layout E

EI-01.03

Illuminated Exterior Sign

Site Monument

Size

Sign Face:
1219 mm H x 2438 mm W
(4' 0" H x 8' 0" W)

Description & Use

Internally illuminated small horizontal free standing monument sign for identifying a medical center where there is a space limitation. This sign can also be used to identify secondary drive entrances to the medical center.

The base can be constructed of concrete or other masonry material in a color and texture that will provide a coordinated architectural look with the building finishes of the medical center.

Message Configuration

(Refer to message layout drawing for dimensions)

Specific message configuration will vary depending on the particular name of a facility. Variations to the presentation of a facility's name will need special approval from Washington DC.

Graphic Process

Illuminated, routed out copy backed with white translucent acrylic.

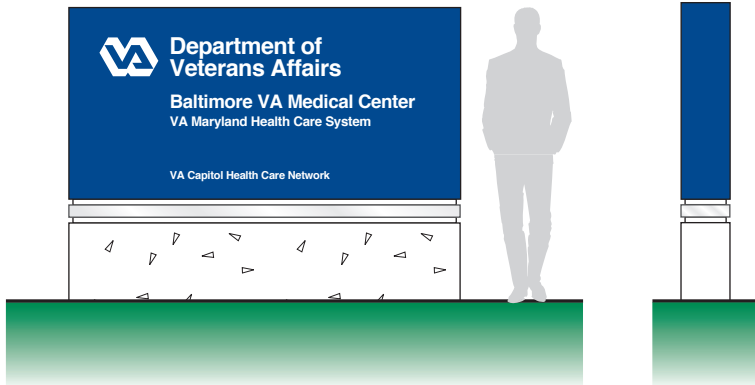
Colors

Text: White T3
Background: Refer to Color Chart
Accent: Refer to Color Chart

Recommendations

Position sign so drivers have a clear, unobstructed view of the sign. Keep landscaping around the sign low and position sprinklers so they project away from the sign.

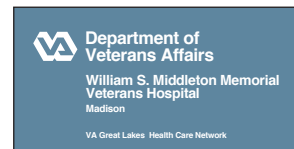
On-off illumination of sign can be controlled through the use of a timer, manual or photoelectric switch. Consult with sign fabricator at time of order for appropriate method to use.



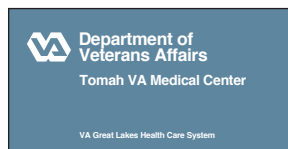
Message Layout A



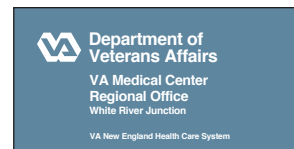
Message Layout B



Message Layout C



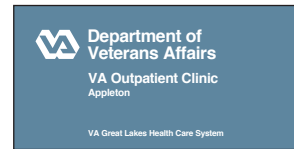
Message Layout D



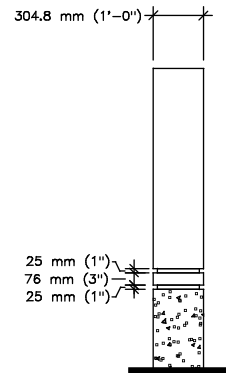
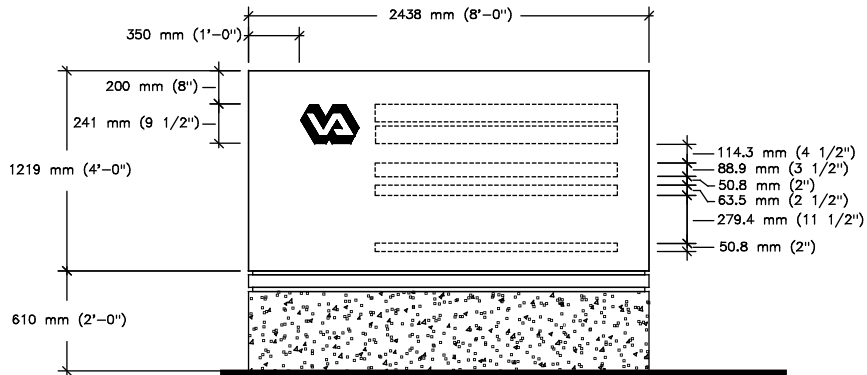
Message Layout E



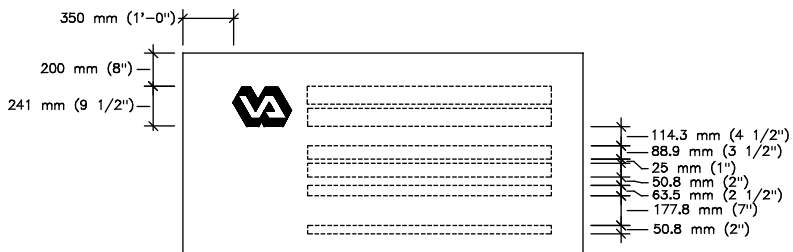
Message Layout F



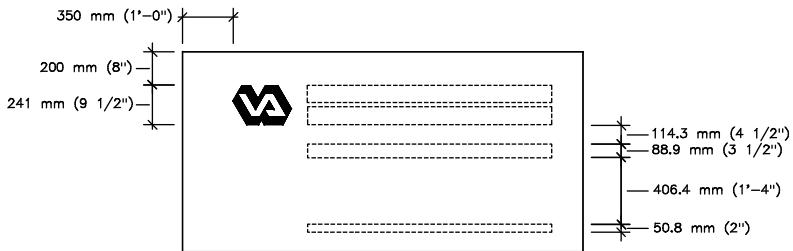
Site Monument



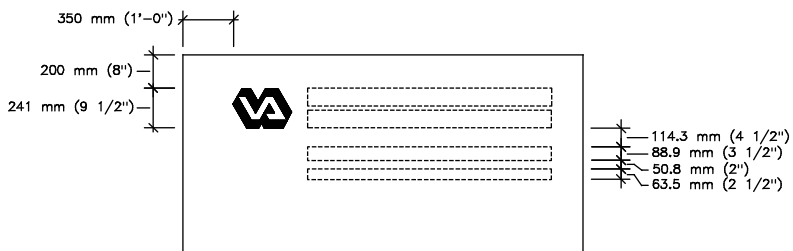
Message Layout A & F



Message Layout B & D



Message Layout C



Message Layout E

EI-01.04

Illuminated Exterior Sign

Vertical Site Monument

Size

Sign Face:
3658 mm H x 1524 mm W
(12' 0" H x 5' 0" W)

Description & Use

Internally illuminated vertical free standing monument sign for identifying a medical center or the medical center's main entrance drive.

The base can be constructed of concrete or other masonry material in a color and texture that will provide a coordinated architectural look with the building finishes of the medical center.

Message Configuration

(Refer to message layout drawing for dimensions)

Specific message configuration will vary depending on the particular name of a facility. Variations to the presentation of a facility's name will need special approval from Washington DC.

Graphic Process

Illuminated, routed out copy backed with white translucent acrylic.

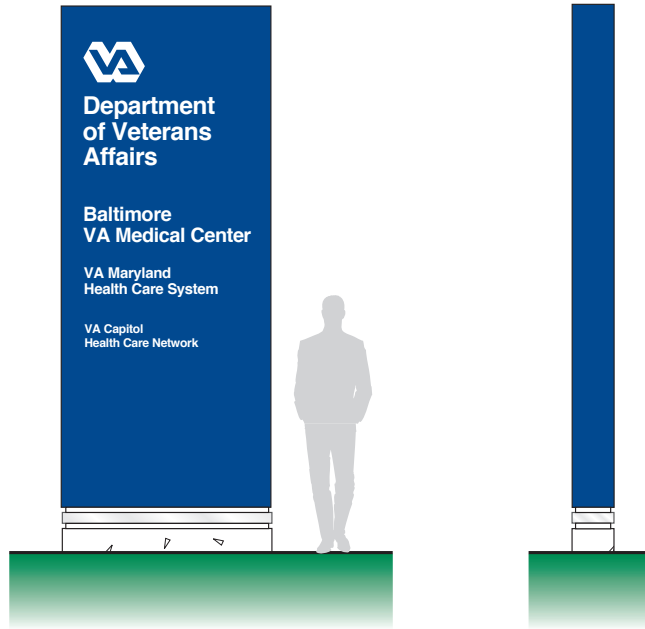
Colors

Text: White T3
Background: Refer to Color Chart
Accent: Refer to Color Chart

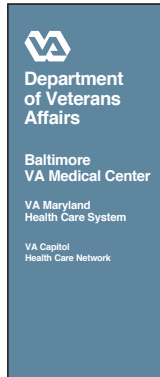
Recommendations

Position sign so drivers have a clear, unobstructed view of the sign. Keep landscaping around the sign low and position sprinklers so they project away from the sign.

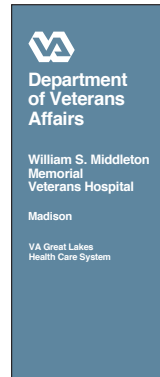
On-off illumination of sign can be controlled through the use of a timer, manual or photoelectric switch. Consult with sign fabricator at time of order for appropriate method to use.



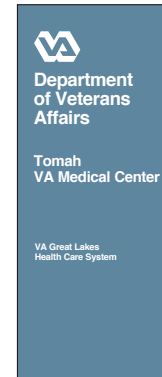
Message Layout A



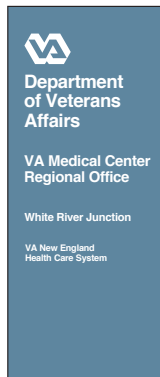
Message Layout B



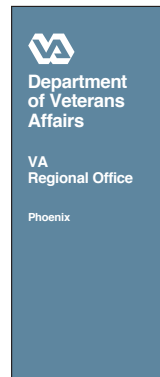
Message Layout C



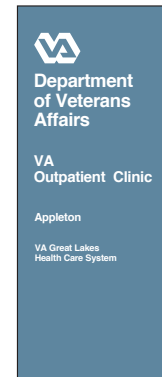
Message Layout D



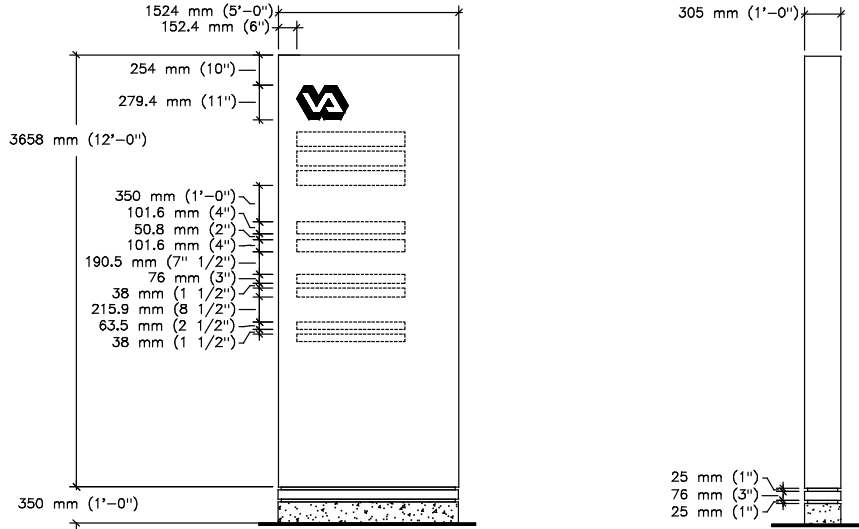
Message Layout E



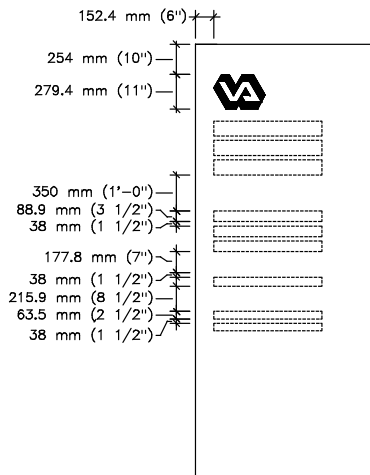
Message Layout F



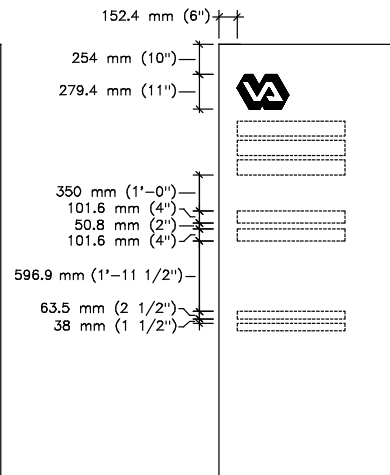
Vertical Site Monument



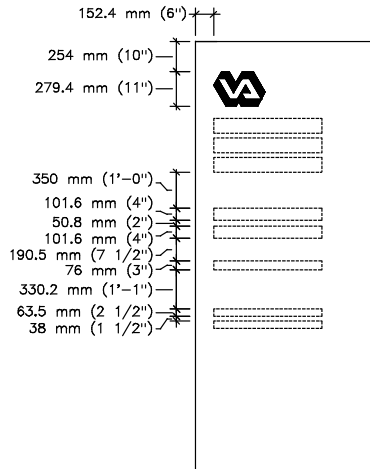
Message
Layout A



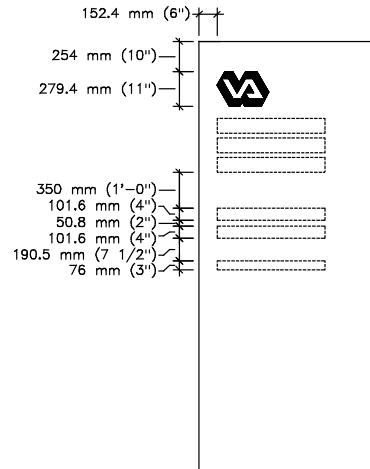
Message
Layout B



Message
Layout C



Message
Layout D & F



Message
Layout E

EI-01.05

Illuminated Exterior Sign

Vertical Site Monument

Size

Sign Face:
2440 mm H x 1220 mm W x 305 mm D
(8' 0" H x 4' 0" W x 1'-0" D)

Description & Use

Internally illuminated small free standing vertical monument sign for identifying a medical center where there is a space limitation. This sign can also be used to identify secondary drive entrances to the medical center.

The base can be constructed of concrete or other masonry material in a color and texture that will provide a coordinated architectural look with the building finishes of the medical center.

Message Configuration

(Refer to message layout drawing for dimensions)

Specific message configuration will vary depending on the particular name of a facility. Variations to the presentation of a facility's name will need special approval from Washington DC.

Graphic Process

Illuminated, routed out copy backed with white translucent acrylic.

Colors

Text: White T3
Background: Refer to Color Chart
Accent: Refer to Color Chart

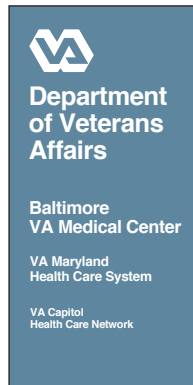
Recommendations

Position sign so drivers have a clear, unobstructed view of the sign. Keep landscaping around the sign low and position sprinklers so they project away from the sign.

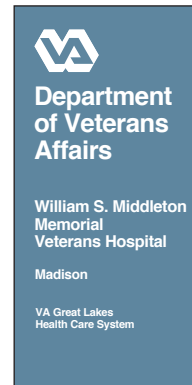
On-off illumination of sign can be controlled through the use of a timer, manual or photoelectric switch. Consult with sign fabricator at time of order for appropriate method to use.



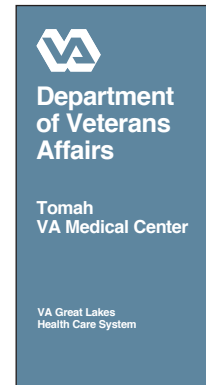
Message Layout A



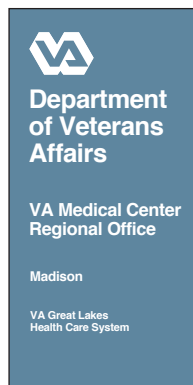
Message Layout B



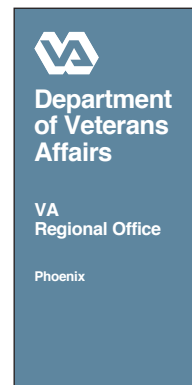
Message Layout C



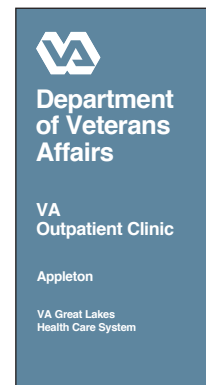
Message Layout D



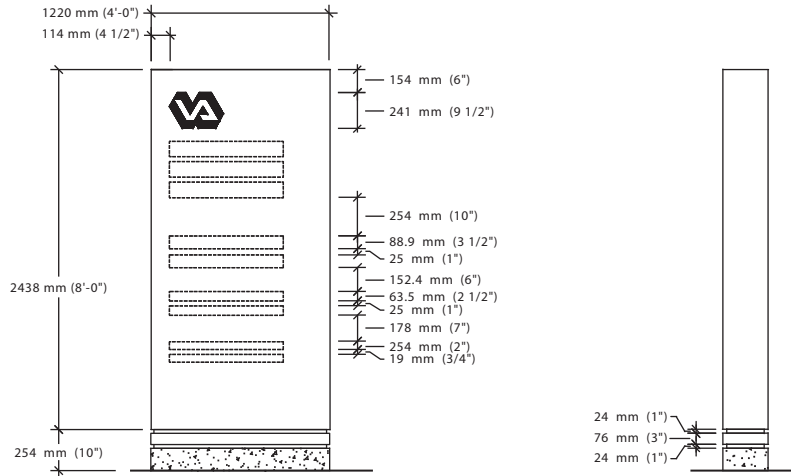
Message Layout E



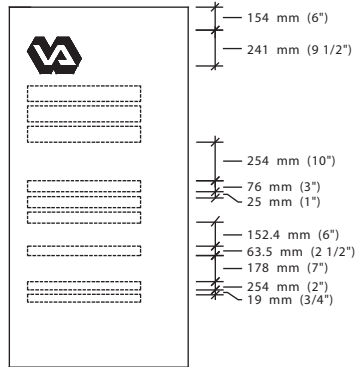
Message Layout F



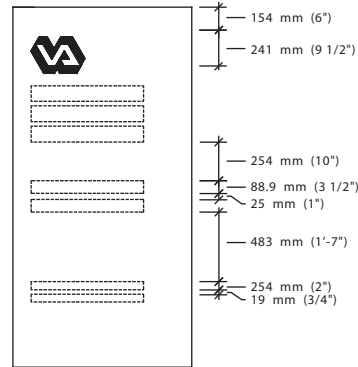
Vertical Site Monument



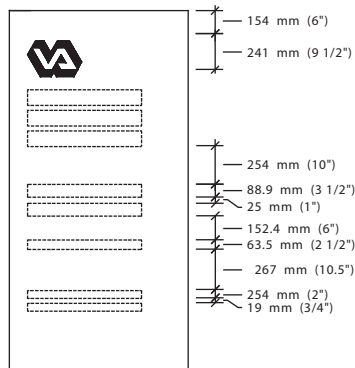
Message
Layout A



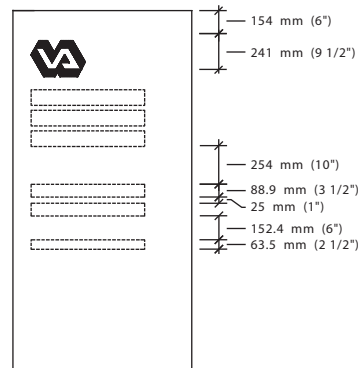
Message
Layout B



Message
Layout C



Message
Layout D & F



Message
Layout E

EI-02.01

Illuminated Exterior Sign

Monument Primary Directional

Size

Sign Face:
1829 mm H x 1829 mm W
(6' 0" H x 6' 0" W)

Description & Use

Internally Illuminated
Large directional monument sign
with 10 stacking strips.
Directional sign with messages
directed specifically to drivers.

Internally illuminated sign should
be used only in locations where
there is a heavy night time driver
need for directional information.
Monument type directional signs
should only be used on the main
entrance drive and in front of the
medical center.

Message Configuration

(Refer to message layout drawing
for dimensions)

Layout A is for the first line of text
with an arrow of direction.

Layout B is for message with no
arrow which is located immediately
under a copy bar with an arrow.

Layout C is for indented text. This
is for situations where the message
has to run over onto a second
copy bar.

Graphic Process

Illuminated, routed out copy
backed with white translucent
acrylic.

Colors

Text: White T3
Background: Refer to Color Chart

Recommendations

Position sign so drivers have a
clear, unobstructed view of the
sign.

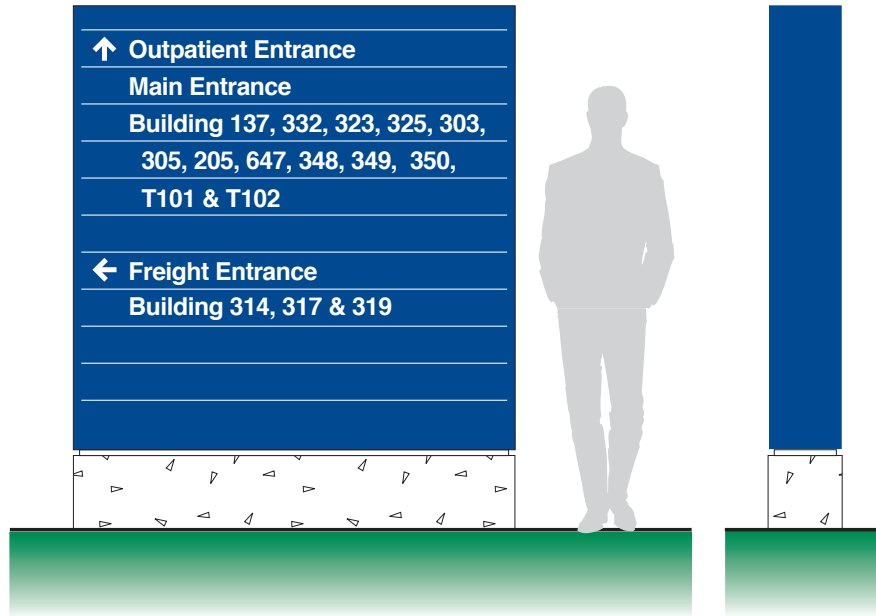
Directional information for services
ahead should always be at the top
of the sign.

Always leave a blank copy strip
between groups of directional
information. This will aid in the
ability of the driver to quickly read
grouped directional information.

Always leave a blank strip at
the top of the sign. This strip is
smaller than the text strips.

Configure a sign with at least one
blank copy strip at the bottom of
the sign. This will aid in the ability
of the driver to read the sign.

On-off illumination of sign can
be controlled through the use of
a timer, manual or photoelectric
switch. Consult with sign
fabricator at time of order for
appropriate method to use.



Message Layout A

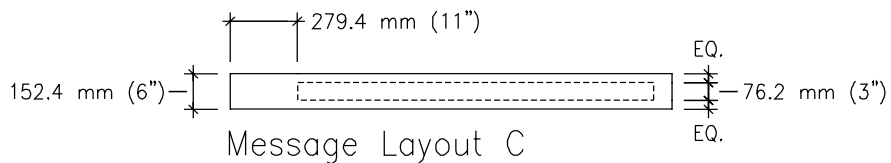
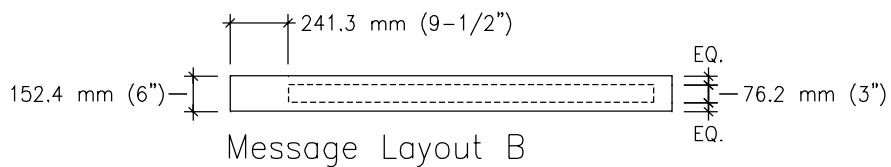
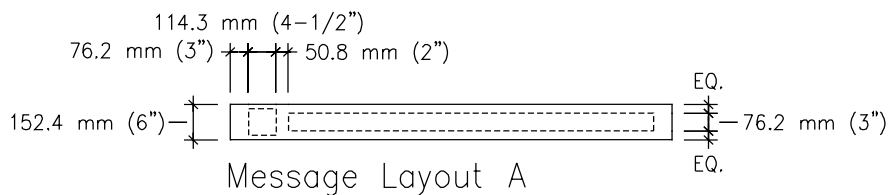
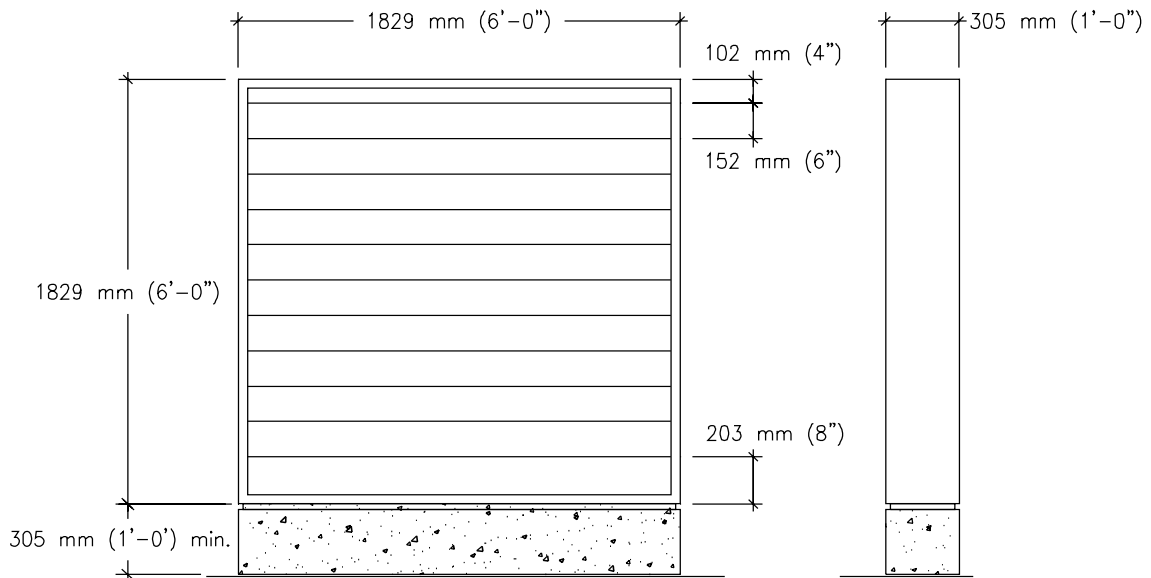


Message Layout B



Message Layout C





EI-02.02

Illuminated Exterior Sign

Monument Secondary Directional

Size

Sign Face:
1829 mm H x 1219 mm W
(6' 0" H x 4' 0" W)

Description & Use

Internally illuminated small directional monument sign with 10 stacking strips. Directional sign with messages directed specifically to drivers.

Internally illuminated sign should be used only in locations where there is a heavy night time driver need for directional information. Monument type directional signs should only be used on the main entrance drive and in front of the medical center.

Message Configuration

(Refer to message layout drawing for dimensions)

Layout A is for the first line of text with an arrow of direction.

Layout B is for message with no arrow which is located immediately under a copy bar with an arrow.

Layout C is for indented text. This is for situations where the message has to run over onto a second copy bar.

Graphic Process

Illuminated, routed out copy backed with white translucent acrylic.

Colors

Text: White T3
Background: Refer to Color Chart

Recommendations

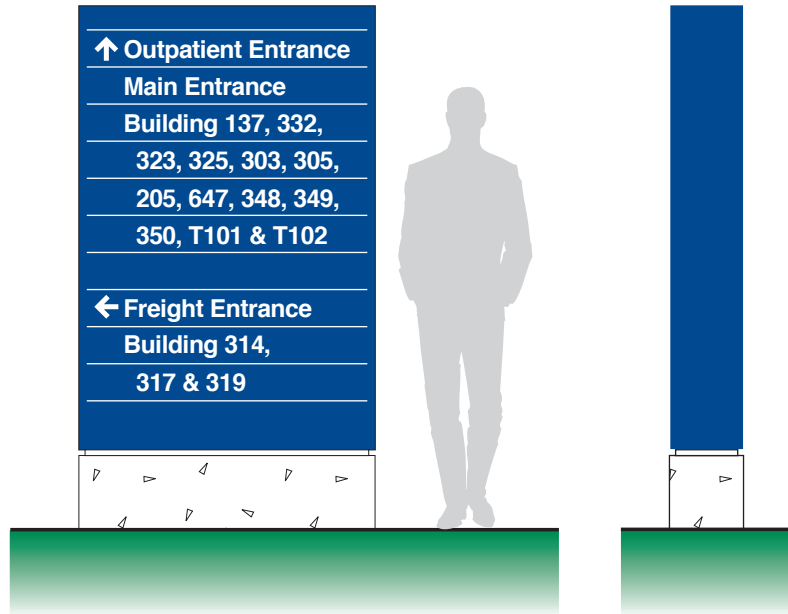
Position sign so drivers have a clear, unobstructed view of the sign.

Directional information for services ahead should always be at the top of the sign.

Always leave a blank copy strip between groups of directional information. This will aid in the ability of the driver to read grouped directional information more quickly.

Always leave a blank strip at the top of the sign. This strip is smaller than the text strips.

Configure a sign with at least one blank copy strip at the bottom of the sign. This will aid in the ability of the driver to read the sign. On-off illumination of sign can be controlled through the use of a timer, manual or photoelectric switch. Consult with sign fabricator at time of order for appropriate method to use.



Message Layout A

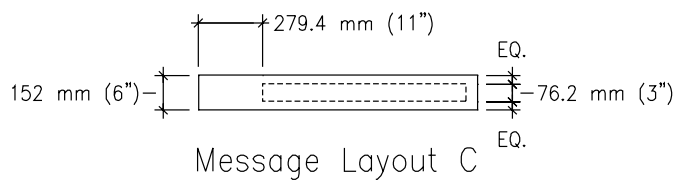
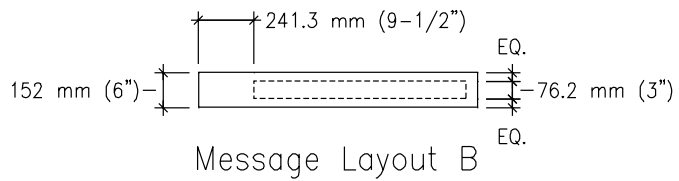
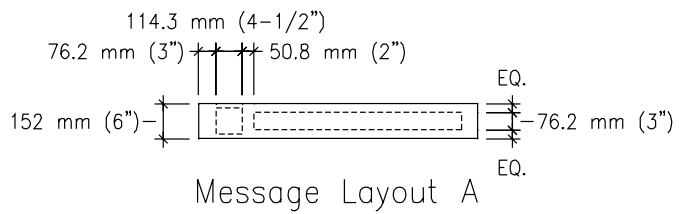
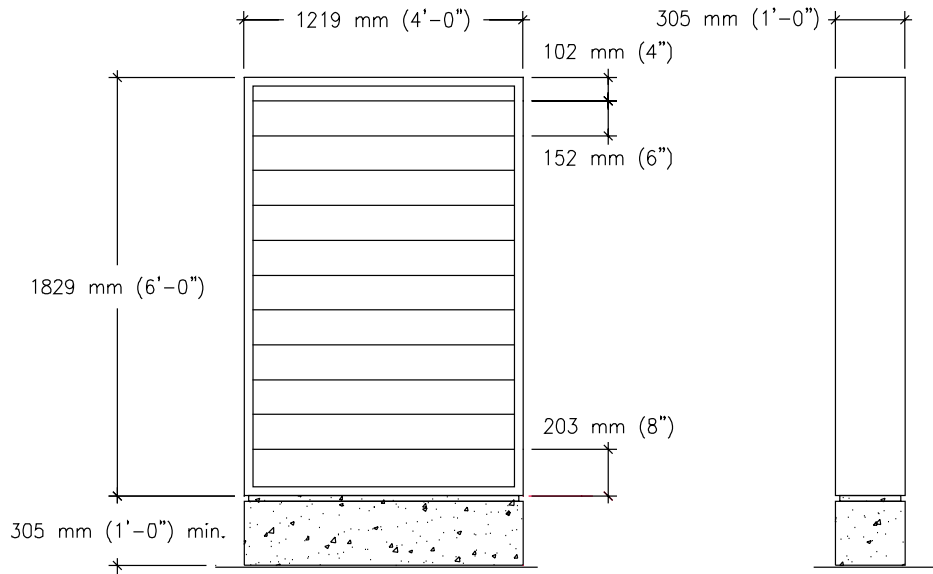


Message Layout B



Message Layout C





EI-03.01

Illuminated Exterior Sign

Post and Panel Building Identification

Size

Sign Face:
1219 mm H x 2438 mm W
(4' 0" H x 8' 0" W)

Overall Sign Height:
1981 mm (6' 6")



Description & Use

Internally illuminated large post and panel sign for identifying a medical center where there is a space limitation or there are other physical restraints that prevent a monument sign from being installed. This sign, in a non-illuminated version, can also be used to identify secondary drive entrances to the medical center.

Message Configuration

(Refer to message layout drawing for dimensions)

The specific message configuration will vary depending on the particular name of a facility. Variations to the presentation of a facility's name will need special approval from Washington DC.

Graphic Process

Illuminated, routed out copy backed with white translucent acrylic.

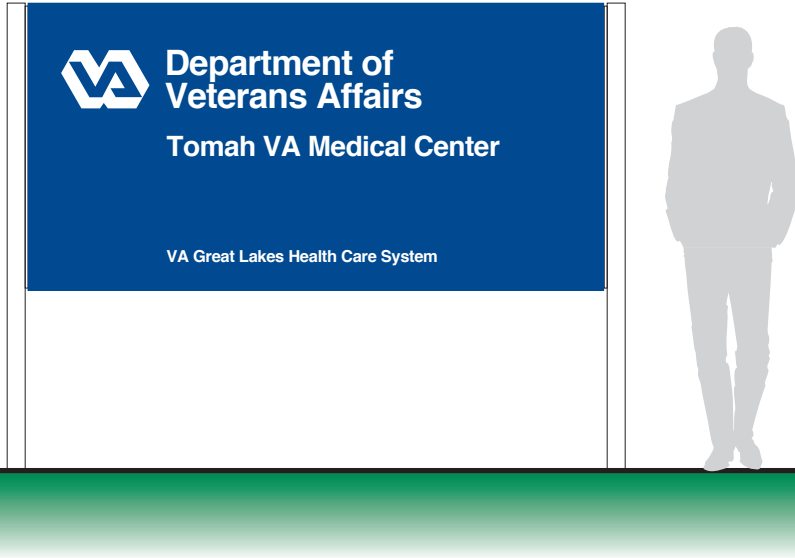
Colors

Text: White T3
Background: Refer to Color Chart
Posts: Refer to Color Chart

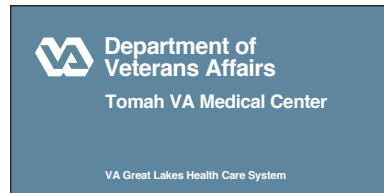
Recommendations

Position sign so drivers have a clear, unobstructed view of the sign.

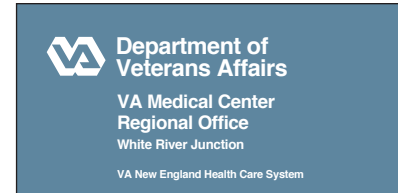
On-off illumination of sign can be controlled through the use of a timer, manual or photoelectric switch. Consult with sign fabricator at time of order for appropriate method to use.



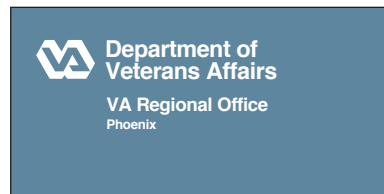
Message Layout C



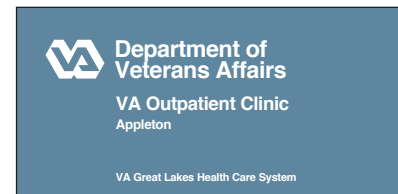
Message Layout D

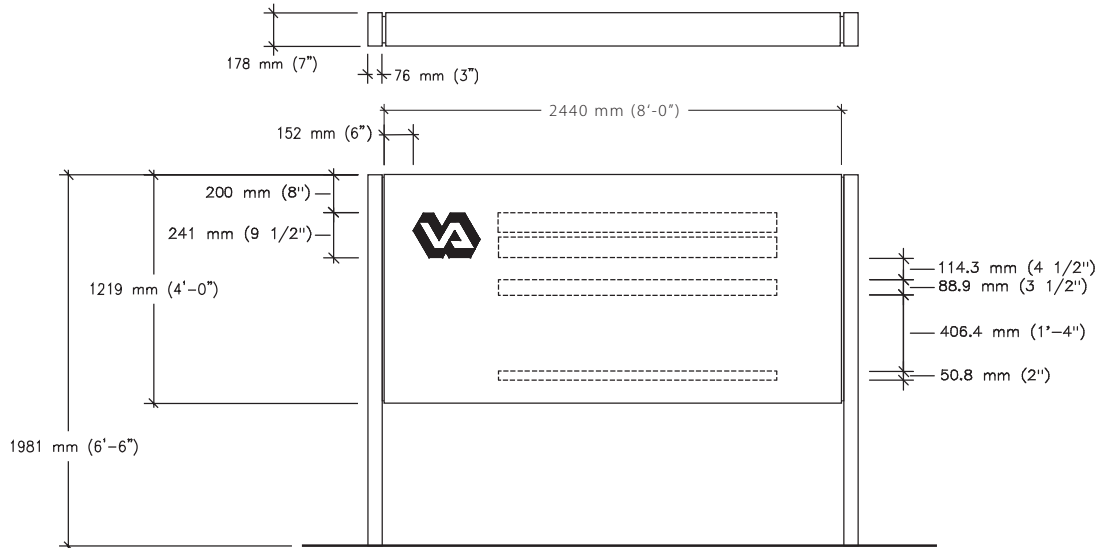


Message Layout E

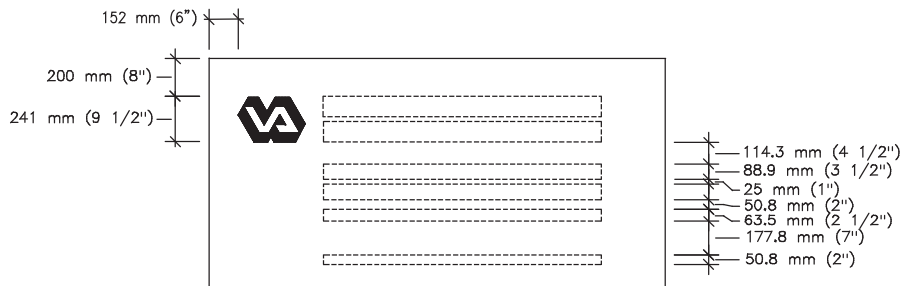


Message Layout F

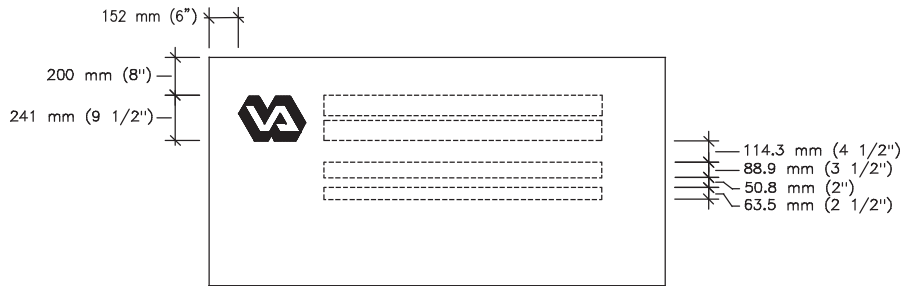




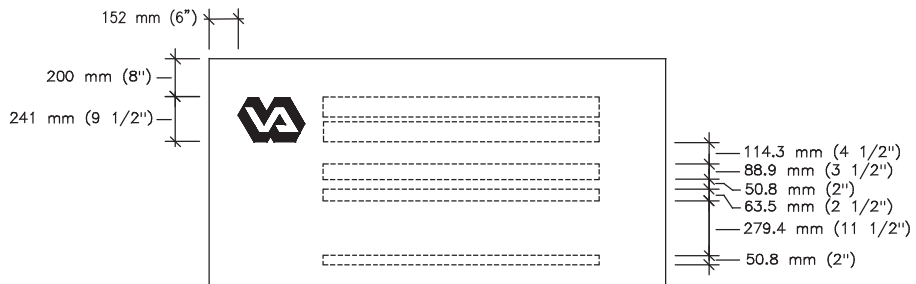
Message Layout C



Message Layout D



Message Layout E



Message Layout F

EI-03.02

Illuminated Exterior Sign

Primary Directional Post and Panel

Size

Sign Face:
1220 mm H x 1830 mm W
(4' 0" H x 6' 0" W)

Overall Sign Height:
1981 mm (6' 6")

Description & Use

Internally illuminated post and panel directional sign with messages directed specifically to drivers.

Message Configuration

(Refer to message layout drawing for dimensions)

Message size and layout should adjust to the volume of information being presented. Layouts illustrated show small, medium and large size text. Smaller text than shown should not be used as the messages will be unreadable to drivers. Larger text than shown will result in words that may not fit on the sign.

Graphic Process

Illuminated, routed out copy backed with white translucent acrylic.

Colors

Text: White T3
Background: Refer to Color Chart
Posts: Refer to Color Chart

Recommendations

This type of directional sign should be used only when the particular message that it will contain is not likely to change.

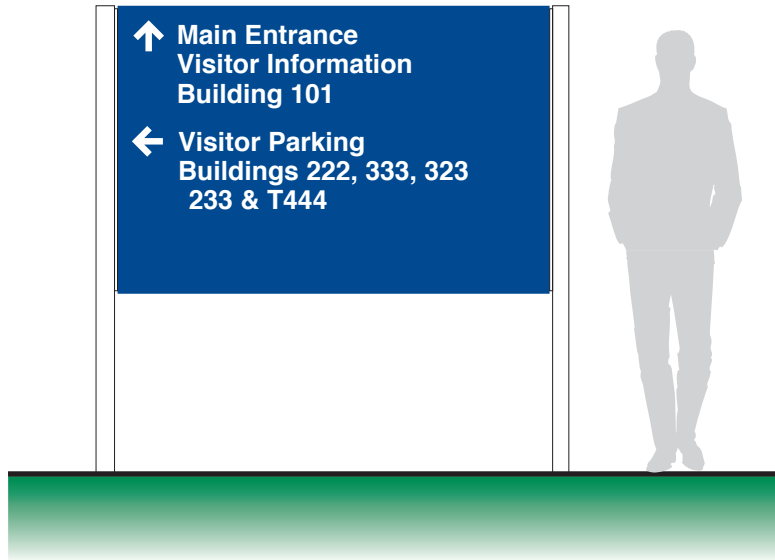
Directional information for services ahead should always be at the top of the sign.

Always leave space between groups of directional information. This will aid in the ability of the driver to read grouped directional information more quickly.

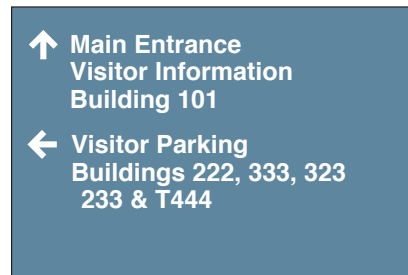
Generally, configure a sign with blank space at the bottom of the sign. This will aid in the ability of the driver to read the sign.

Position sign so drivers have a clear, unobstructed view of the sign.

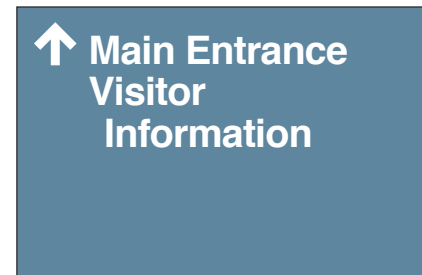
On-off illumination of sign can be controlled through the use of a timer, manual or photoelectric switch. Consult with sign fabricator at time of order for appropriate method to use.



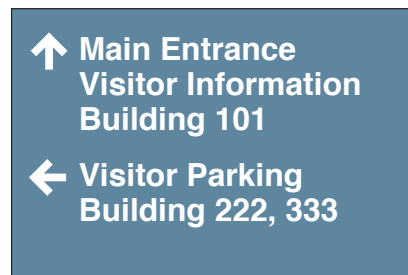
Message Layout A



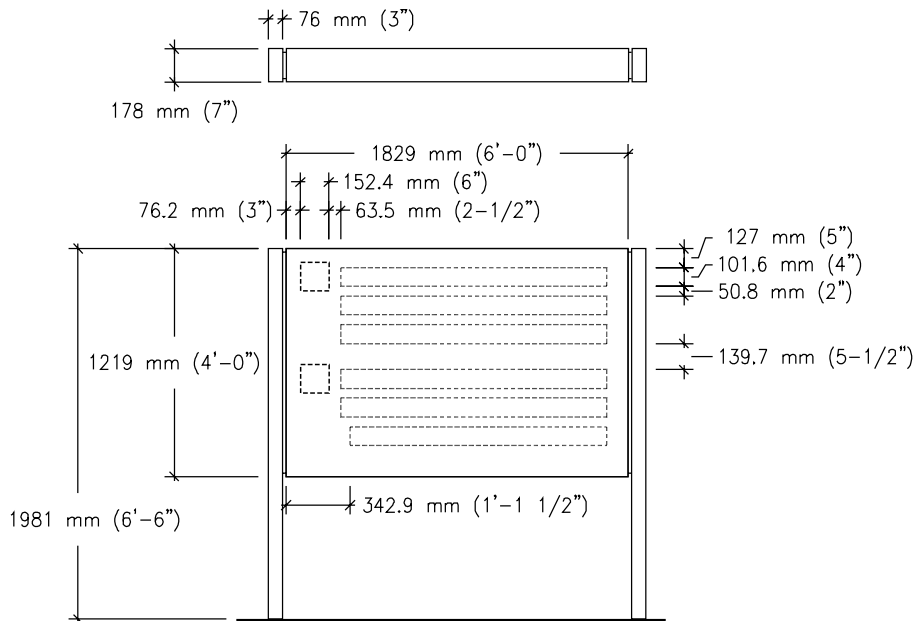
Message Layout B



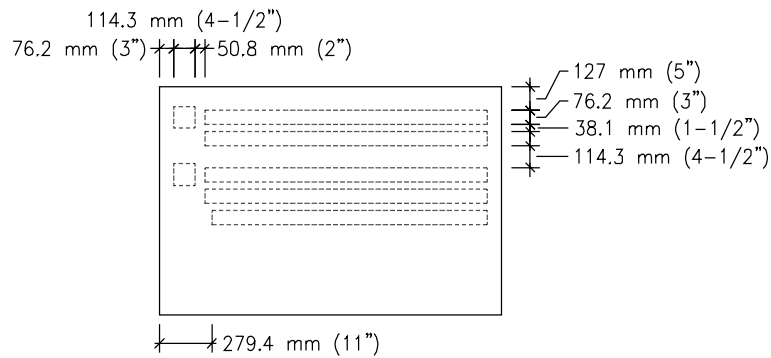
Message Layout C



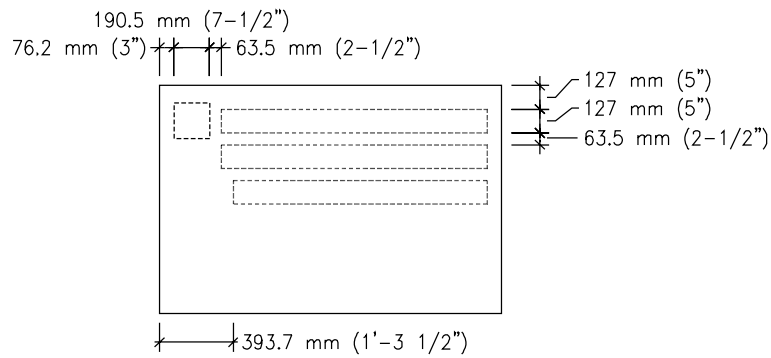
Primary Directional Post and Panel



Message Layout C



Message Layout A



Message Layout B

EI-04.01

Illuminated Exterior Sign

Post and Panel Directional

Size

Sign Face:
1219 mm H x 2438 mm W
(4' 0" H x 8' 0" W)

Overall Sign Height:
1981 mm (6' 6")

Description & Use

Internally illuminated large/long auto oriented stacking 8 directional sign strips with messages directed specifically to drivers. Internally illuminated sign to be used only in locations where there is a heavy night time driver need for directional information.

Message Configuration

(Refer to construction drawing for dimensions)

Layout A is for the first line of text with an arrow of direction.

Layout B is for message with no arrow which is located immediately under a copy bar with an arrow.

Layout C is for indented text. This is for situations where the message has to run over onto a second copy bar.

Graphic Process

Illuminated, routed out copy backed with white translucent acrylic.

Colors

Text: White T3
Background: Refer to Color Chart
Posts: Refer to Color Chart

Recommendations

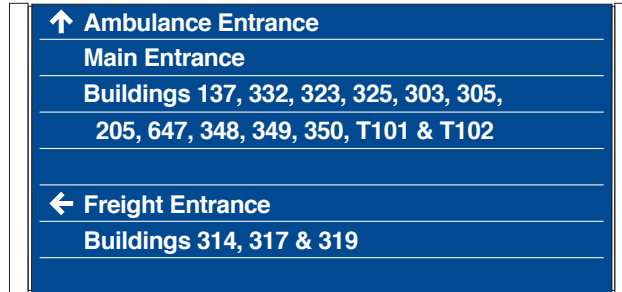
Position sign so drivers have a clear, unobstructed view of the sign.

Directional information for services ahead should always be at the top of the sign.

Always leave a blank copy strip between groups of directional information. This will aid in the ability of the driver to read grouped directional information more quickly.

Generally, configure a sign with at least one blank copy strip at the bottom of the sign. This will aid in the ability of the driver to read the sign. It will also allow for an additional line of text to be added to the sign in the future.

On-off illumination of sign can be controlled through the use of a timer, manual or photoelectric switch. Consult with sign fabricator at time of order for appropriate method to use.



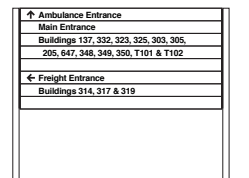
Message Layout A



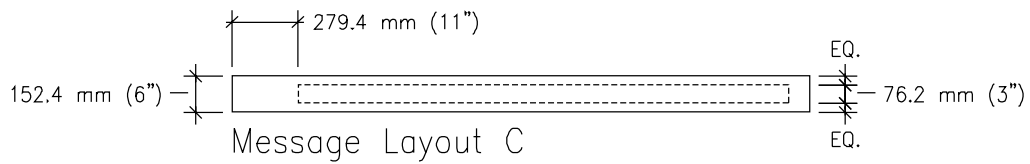
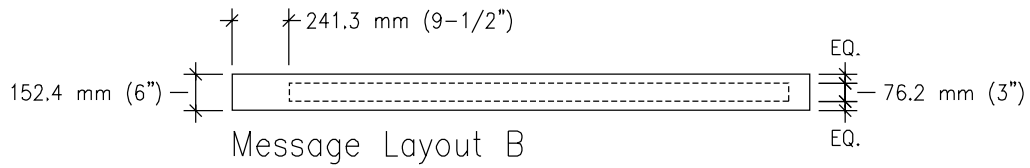
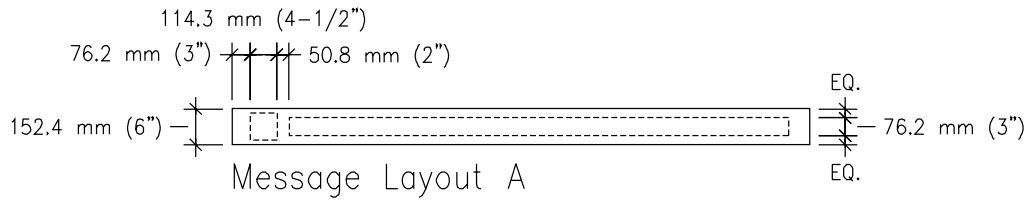
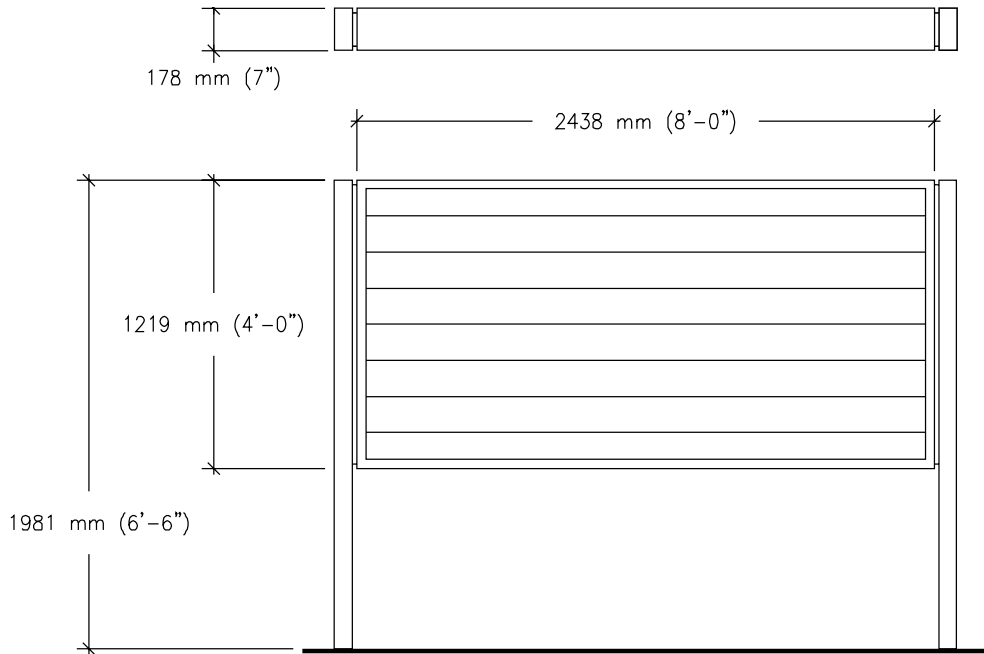
Message Layout B



Message Layout C



EIO4.1A (8 Bar)



EI-04.02

Illuminated Exterior Sign

Post and Panel Directional

Size

Sign Face:
1219 mm H x 1829 mm W
(4' 0" H x 6' 0" W)

Overall Sign Height:
1829 mm (6' 0")

Description & Use

Internally illuminated standard auto oriented stacking 8 strip bar directional sign with messages directed specifically to drivers. Internally illuminated sign to be used only in locations where there is a heavy night time driver need for directional information.

Message Configuration

(Refer to construction drawing for dimensions)

Layout A is for the first line of text with an arrow of direction.

Layout B is for message with no arrow which is located immediately under a copy bar with an arrow.

Layout C is for indented text. This is for situations where the message has to run over onto a second copy bar.

Graphic Process

Illuminated, routed out copy backed with white translucent acrylic.

Colors

Text: White T3
Background: Refer to Color Chart
Posts: Refer to Color Chart

Recommendations

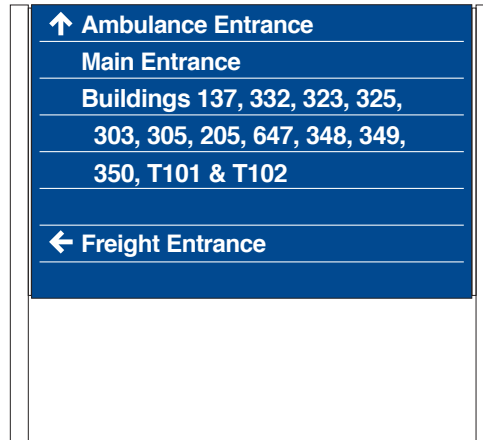
Position sign so drivers have a clear, unobstructed view of the sign.

Directional information for services ahead should always be at the top of the sign.

Always leave a blank copy strip between groups of directional information. This will aid in the ability of the driver to read grouped directional information more quickly.

Generally, configure a sign with at least one blank copy strip at the bottom of the sign. This will aid in the ability of the driver to read the sign. It will also allow for an additional line of text to be added to the sign in the future without having to order another copy strip.

On-off illumination of sign can be controlled through the use of a timer, manual or photoelectric switch. Consult with sign fabricator at time of order for appropriate method to use.



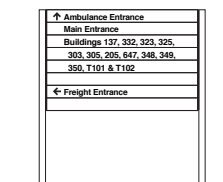
Message Layout A



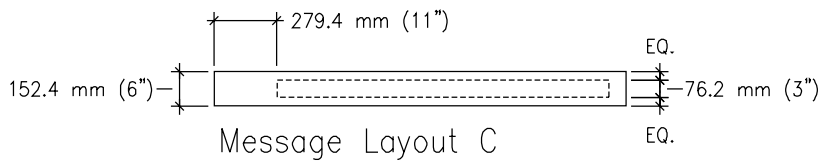
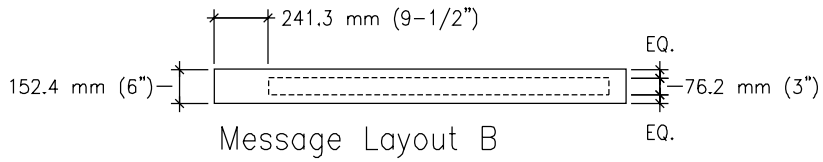
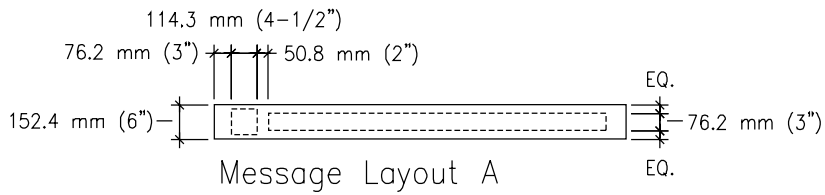
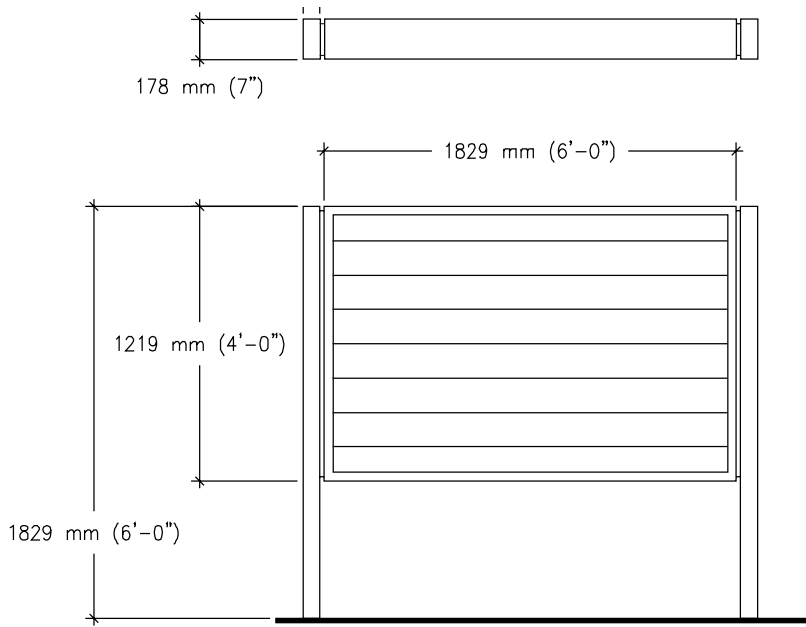
Message Layout B



Message Layout C



EI04.2A (8 Bar)



EI-06.01

Illuminated Exterior Sign

Wall Mounted Overhead

Size

Sign Face:
610 mm H x 2438 mm W
(2' 0" H x 8' 0" W)

Description & Use

Internally illuminated overhead wall mounted identification sign for a stand alone building, that is not a medical center. This sign type can also be used to identify an entrance to a building.

Message Configuration

(Refer to message layout drawing for dimensions)

Message Layout A, B and C are for identifying an entrance to a building.

Message Layout D is for identifying a non-medical center, stand alone building.

Graphic Process

Illuminated, routed out copy backed with white translucent acrylic.

Colors

Text: White T3
Background: Refer to Color Chart

Recommendations

For a stand alone non medical center building, use this type of sign when there is not place to install a free standing sign.

Use this type of sign for "titling" major building entrances that have a very high volume of patient and visitor traffic and need to be clearly distinguished.

On-off illumination of sign can be controlled through the use of a timer, manual or photoelectric switch. Consult with sign fabricator at time of order for appropriate method to use.



Message Layout A



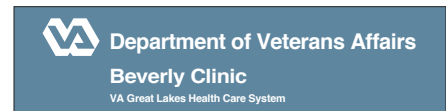
Message Layout B



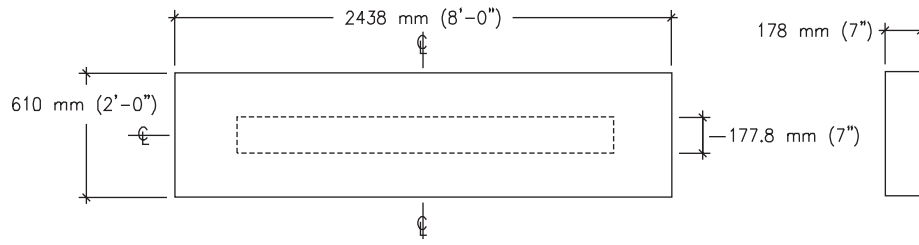
Message Layout C



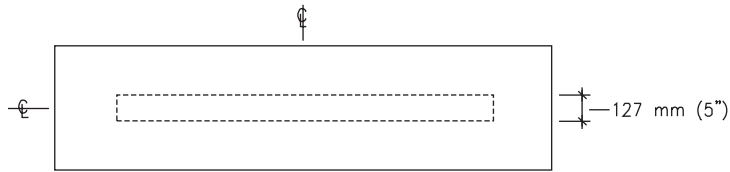
Message Layout G



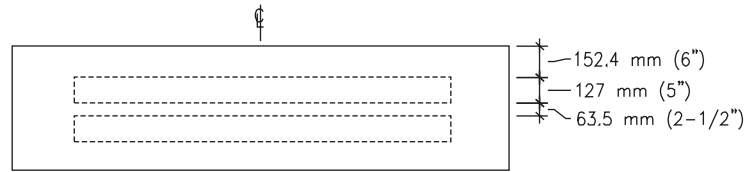
Wall Mounted Overhead



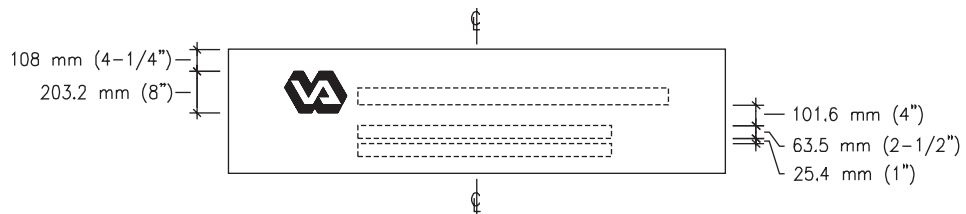
Message Layout A



Message Layout B



Message Layout C



Message Layout D

EI-06.02

Illuminated Exterior Sign

Wall Mounted Building Identification

Size

Sign Face:
914 mm H x 1219 mm W
(3' 0" H x 4' 0" W)

Description & Use

Internally illuminated large wall mounted sign type that can be used to identify a building on a medical center campus. It also can be used for identification of a stand alone building that is not a medical center and there is no place to install a free standing sign.

Message Configuration

(Refer to message layout drawing for dimensions)

Message Layout A is for identifying a non-medical center stand alone building.

Message Layout B and C are for identifying building on a medical center campus.

Graphic Process

Illuminated, routed out copy backed with white translucent acrylic.

Colors

Text: White T3
Background: Refer to Color Chart

Recommendations

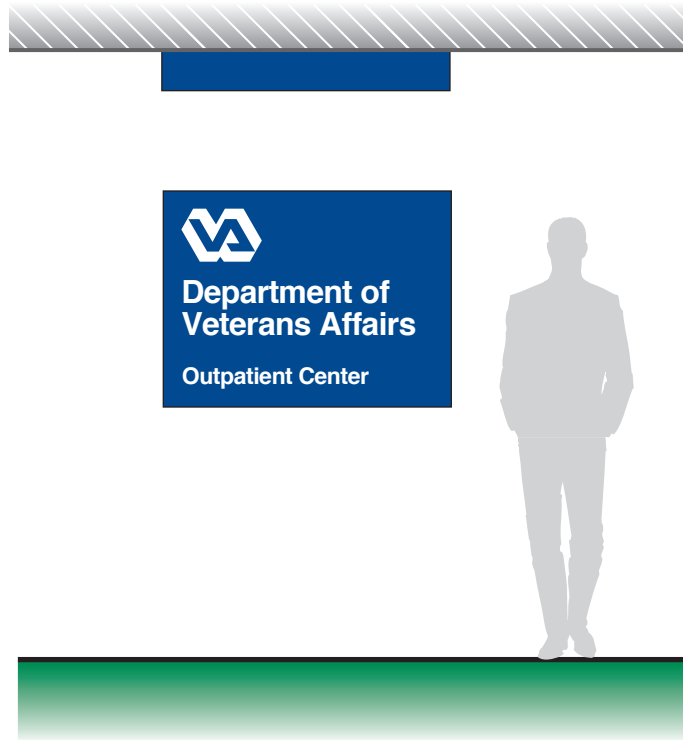
For a stand alone non medical center building, use this type of sign when there is not place to install a free standing sign.

Use this type of sign for "titling" building entrances that have a very high volume of patient and visitor traffic and needs to be clearly distinguished. It also can be use on a building that is set back a considerable distance from the roadway.

Position the sign adjacent the main entrance, if possible. If the sign is not readable in this position, then locate on the corner of the building.

This large sign should not be used on small buildings or buildings with minor uses.

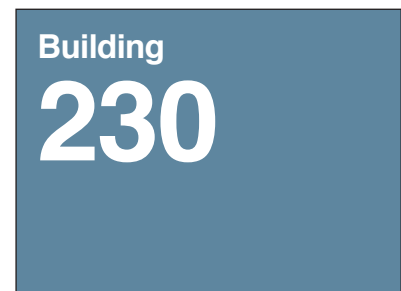
On-off illumination of sign can be controlled through the use of a timer, manual or photoelectric switch. Consult with sign fabricator at time of order for appropriate method to use.



Message Layout A



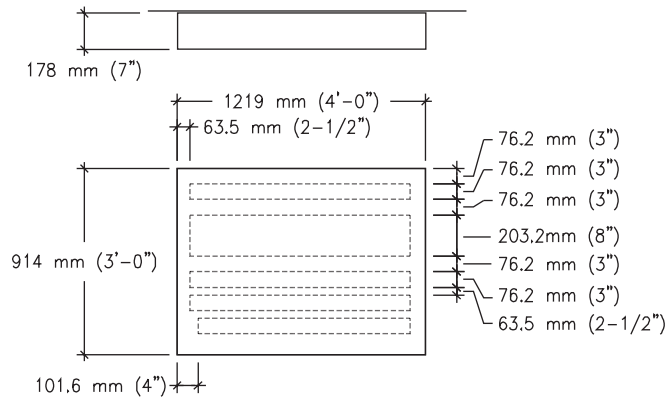
Message Layout B



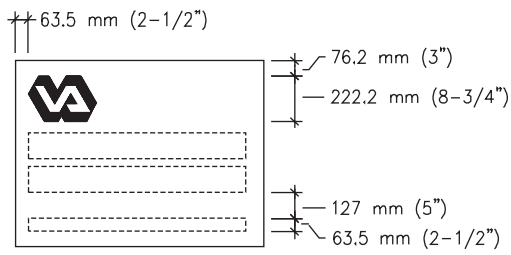
Message Layout C



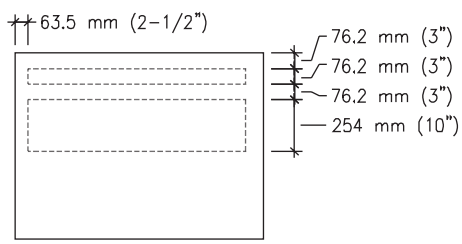
Wall Mounted Building Identification



Message Layout C



Message Layout A



Message Layout B

EI-08.01

Illuminated Exterior Sign

Wall Mounted Ambulance Entrance Identification

Size

Sign Face:
610 mm H x 2438 mm W
(2' 0" H x 8' 0" W)

Description & Use

Internally illuminated overhead wall mounted sign to be placed above the ambulance entrance.

Message Configuration

(Refer to message layout drawing for dimensions)
Conform to the layout shown.

Graphic Process

Illuminated, routed out copy backed with white translucent acrylic.

Colors

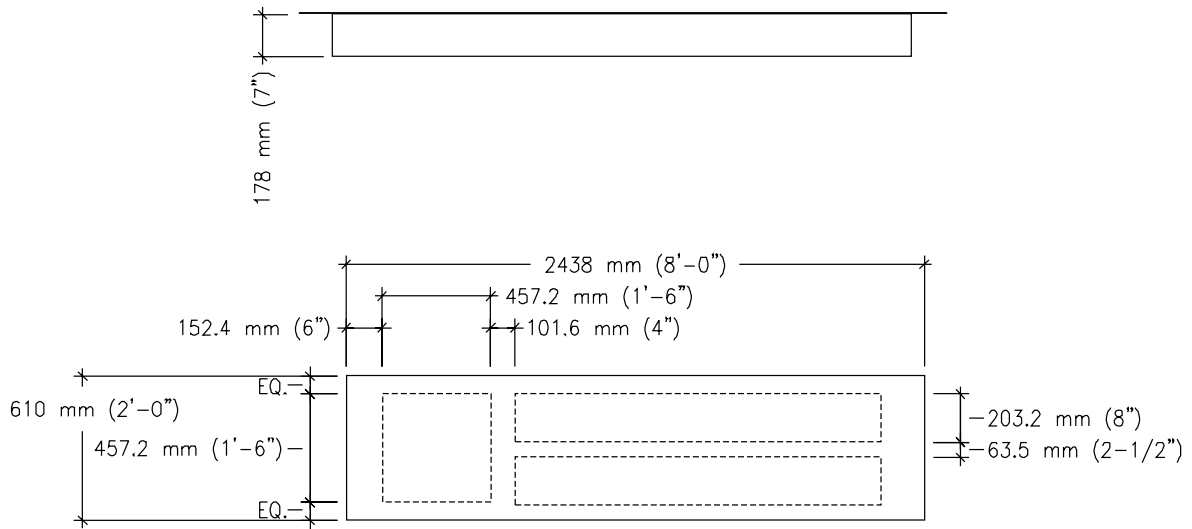
Text: White T3
Symbol Background: White T3
Sign Background: Red B3

Recommendations

Place sign in a position of the building where it clearly identifies the "Ambulance Entrance" and is visible to both vehicles and pedestrians.

On-off illumination of sign can be controlled through the use of a timer, manual or photoelectric switch. Consult with sign fabricator at time of order for appropriate method to use.

**Message Layout A**



Message Layout A

EI-08.02

Illuminated Exterior Sign

Wall Mounted Ambulance Entrance Identification

Size

Sign Face:
914 mm H x 1219 mm W
(3' 0" H x 4' 0" W)

Description & Use

Internally illuminated wall mounted sign to be placed on the wall adjacent to the ambulance entrance.

Message Configuration

(Refer to message layout drawing for dimensions)
Conform to the layouts shown.

Graphic Process

Illuminated, routed out copy backed with white translucent acrylic.

Colors

Text: White T3
Symbol Background: White T3
Sign Background: Red B3.

Recommendations

Place sign in a position of the building where it clearly identifies the "Ambulance Entrance" and is visible to both vehicles and pedestrians.

On-off illumination of sign can be controlled through the use of a timer, manual or photoelectric switch. Consult with sign fabricator at time of order for appropriate method to use.



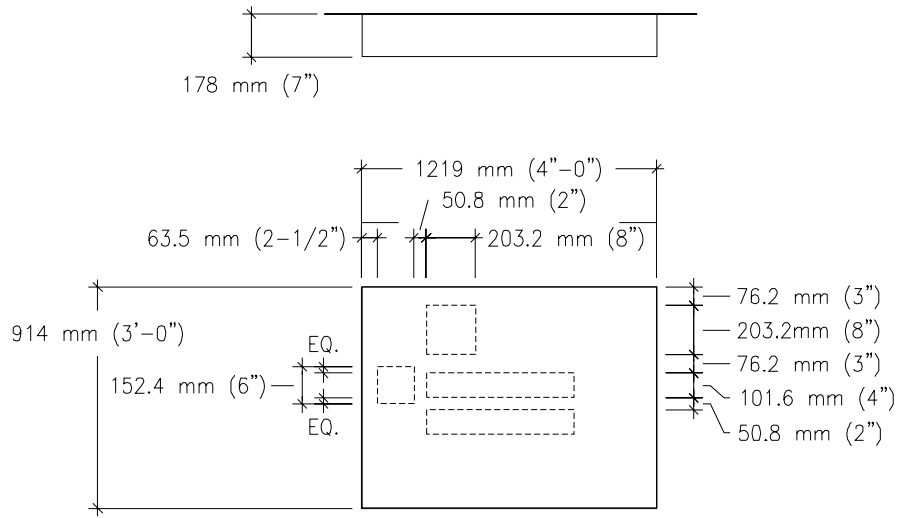
Message Layout A



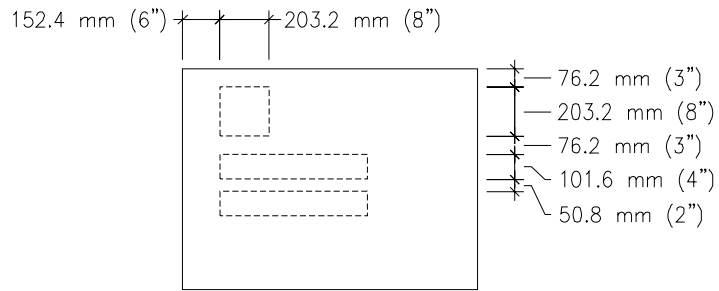
Message Layout B



Wall Mounted Ambulance Entrance Identification



Message Layout A



Message Layout B

EI-08.03

Illuminated Exterior Sign

Post and Panel Ambulance Entrance Identification

Size

Sign Face:
914 mm H x 1219 mm W
(3' 0" H x 4' 0" W)

Overall Sign Height:
1676 mm (5' 6")

Description & Use

Internally illuminated post and panel sign to be placed on the roadway, adjacent to the ambulance entrance to direct ambulance drivers to the correct building entrance.

Message Configuration

(Refer to message layout drawing for dimensions)
Conform to the layouts shown.

Graphic Process

Illuminated, routed out copy backed with white translucent acrylic.

Colors

Text: White T3
Symbol Background: White T3
Sign Background: Red B3
Post: Refer to Color Chart

Recommendations

Position sign so drivers have a clear, unobstructed view of the sign.

On-off illumination of sign can be controlled through the use of a timer, manual or photoelectric switch. Consult with sign fabricator at time of order for appropriate method to use.

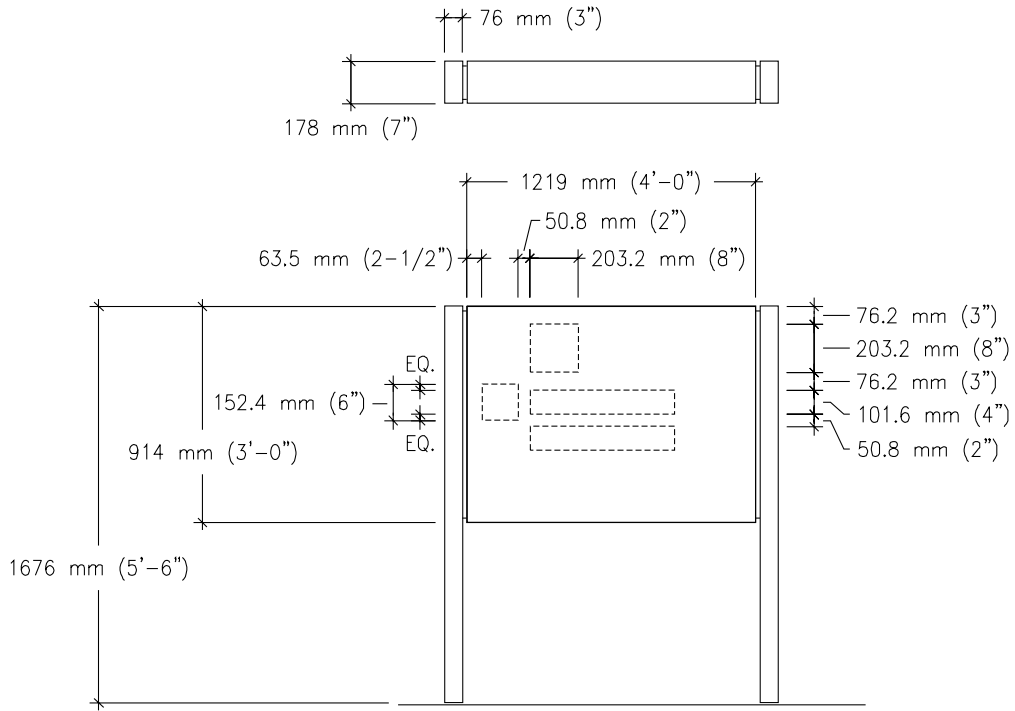


Message Layout A

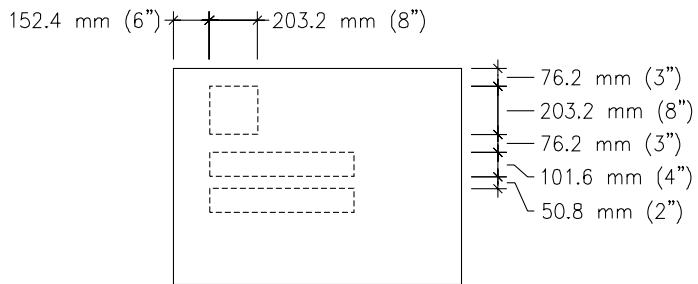


Message Layout B





Message Layout A



Message Layout B

EI-09

Illuminated Exterior Sign

Dimensional Building Identification Letters

Size

For the various sizes, refer to the adjacent table.

Description & Use

Internal halo-illuminated, fabricated metal dimensional letters and logo for identifying a facility.

This sign should be placed on the medical center building in a location that is highly visible to the public.

Message Configuration

(Refer to message layout drawing for dimensions)

Letters used with the logo should read "Medical Center", "Outpatient Center" or "Veterans Affairs".

Graphic Process

Fabricated aluminum letters with internal neon lighting. Letters are pin mounted off wall to allow light to wash wall and halo illuminate letters.

Colors

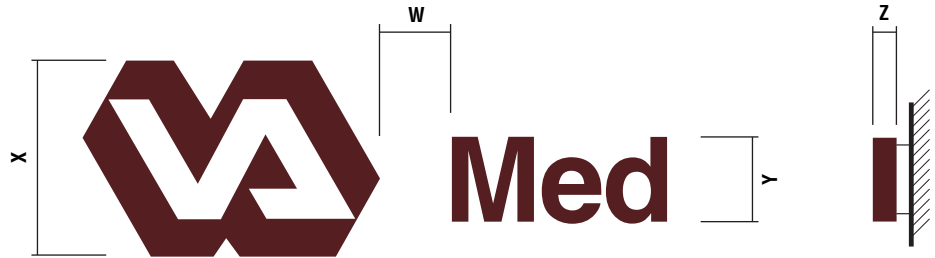
Text: P1, P2 or P3

Recommendations

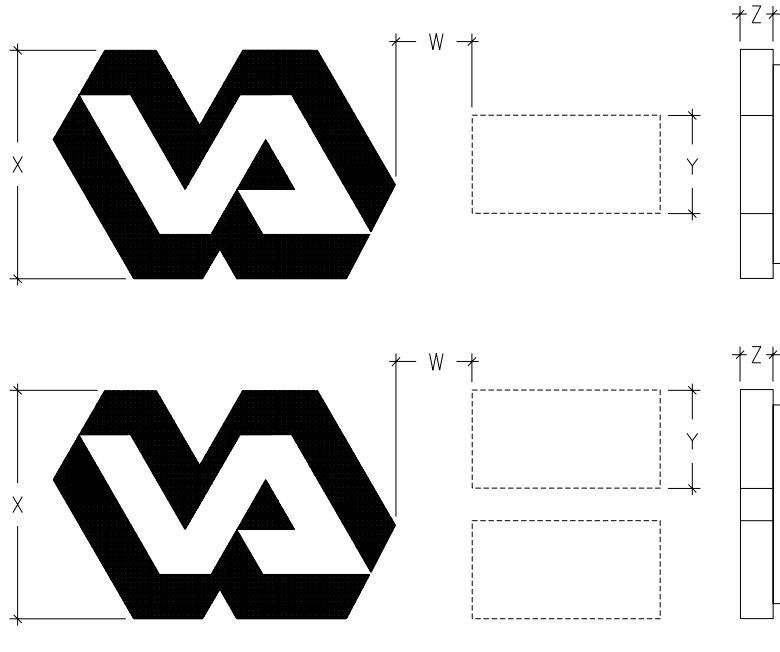
Large size letters and logo are intended for use on the top of the building as a skyline sign.

These letters require clear access to the back (inside) of the wall on which they will be installed.

On-off illumination of sign can be controlled through the use of a timer, manual or photoelectric switch. Consult with sign fabricator at time of order for appropriate method to use.



Sign Type	Y	Z	X	W
EI09.6	450 mm (18")	150 mm (6")	1050 mm (42")	350 mm (14")
EI09.7	600 mm (24")	150 mm (6")	1350 mm (56")	475 mm (19")
EI09.8	750 mm (30")	150 mm (6")	1800 mm (70")	575 mm (23")
EI09.9	900 mm (36")	150 mm (6")	2100 mm (84")	700 mm (28")



Sign Type	W	X	Y	Z
EI09.6	350 mm (14")	1050 mm (42")	450 mm (18")	150 mm (6")
EI09.7	475 mm (19")	1350 mm (56")	600 mm (24")	150 mm (6")
EI09.8	575 mm (23")	1800 mm (70")	750 mm (30")	150 mm (6")
EI09.9	700 mm (28")	2100 mm (84")	900 mm (36")	150 mm (6")

4 Panel Site Monument Kiosk

Size

Sign Face:
3658 mm H x 1524 mm W
(15' 6" H x 5' 0" W)

Description & Use

Internally illuminated vertical free standing monument sign for identifying a medical center or the medical center's main entrance drive.

The base can be constructed of concrete or other masonry material in a color and texture that will provide a coordinated architectural look with the building finishes of the medical center.

Message Configuration

(Refer to message layout drawing for dimensions)

Specific message configuration will vary depending on the particular name of a facility. Variations to the presentation of a facility's name will need special approval from Washington DC.

Graphic Process

Illuminated, routed out copy backed with white translucent acrylic.

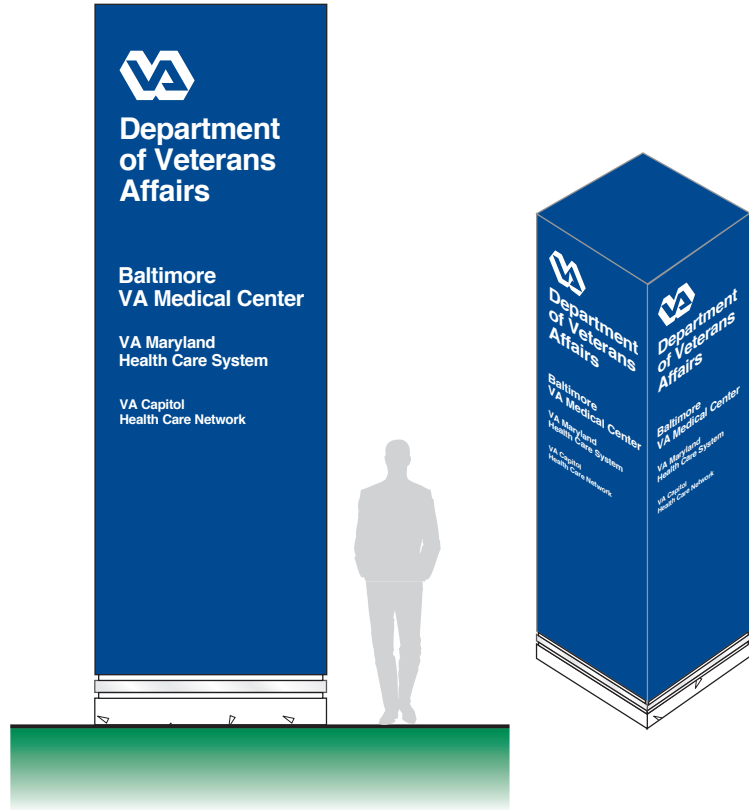
Colors

Text: White T3
Background: Refer to Color Chart
Accent: Refer to Color Chart

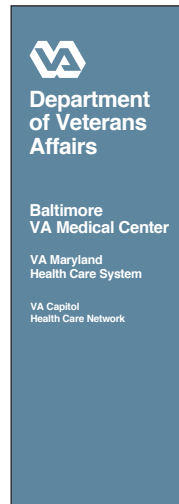
Recommendations

Position sign so drivers have a clear, unobstructed view of the sign. Keep landscaping around the sign low and position sprinklers so they project away from the sign.

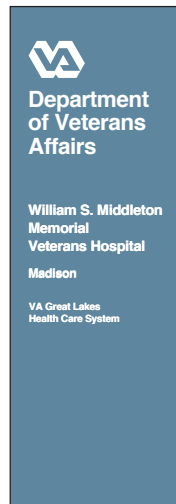
On-off illumination of sign can be controlled through the use of a timer, manual or photoelectric switch. Consult with sign fabricator at time of order for appropriate method to use.



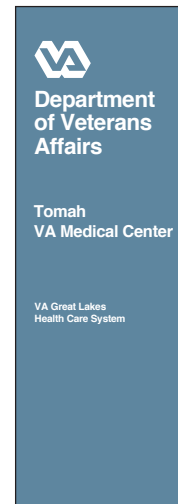
Message Layout A



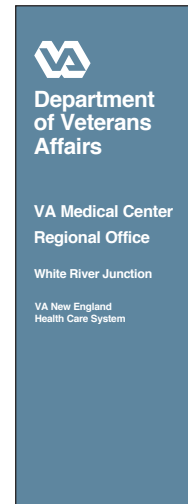
Message Layout B



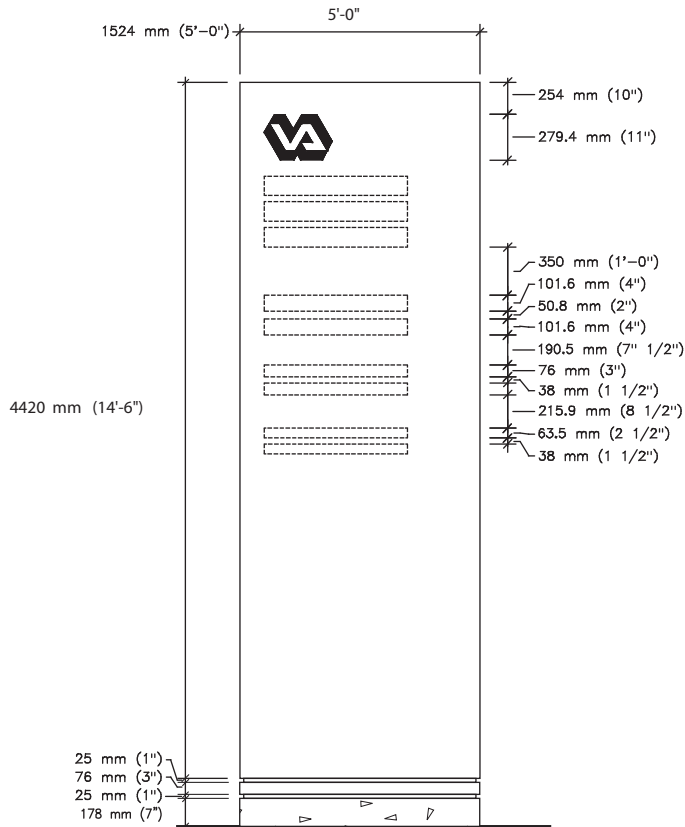
Message Layout C



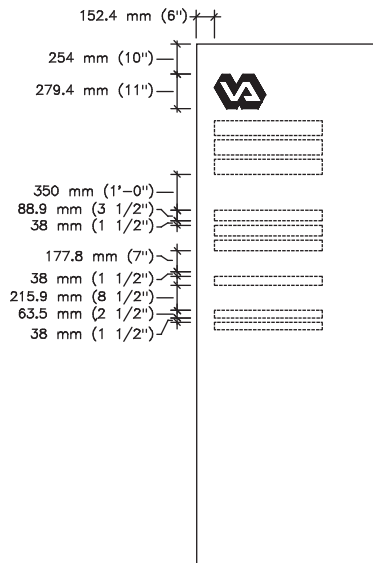
Message Layout D



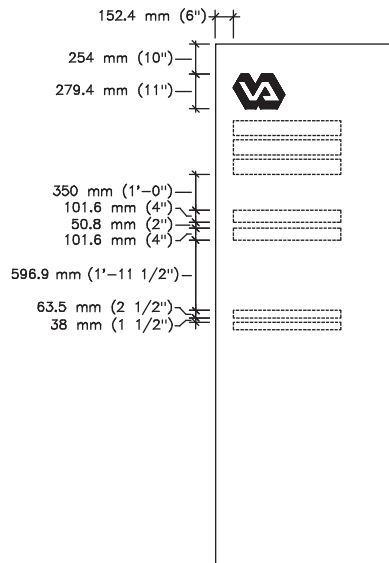
4 Panel Site Monument Kiosk



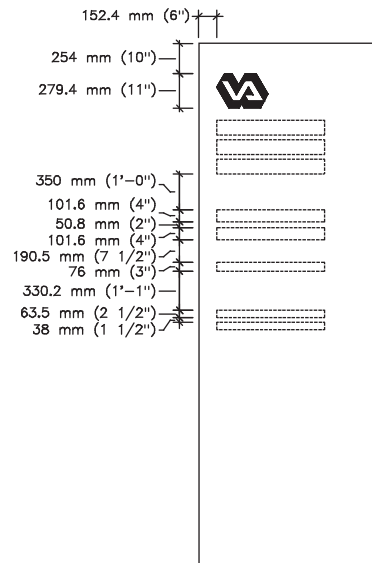
Message
Layout A



Message
Layout B



Message
Layout C



Message
Layout D

EI-15.01

Illuminated Exterior Sign

4 Panel Monument Kiosk with Directional

Size

Sign Face:
4572 mm H x 1524 mm W
(15' 0" H x 5' 0" W)

Description & Use

Internally illuminated vertical free standing monument sign for identifying a medical center or the medical center's main entrance drive.

Lower section of sign has modular changeable sign panels that can be used for directional information.

The base can be constructed of concrete or other masonry material in a color and texture that will provide a coordinated architectural look with the building finishes of the medical center.

Message Configuration

(Refer to message layout drawing for dimensions)

Specific message configuration will vary depending on the particular name of a facility. Variations to the presentation of a facility's name will need special approval from Washington DC.

Care is to be taken when preparing directional text and arrow direction. Pay particular attention to the directional messages being communicate relative to the signs orientation.

Graphic Process

Illuminated, routed out copy backed with white translucent acrylic.

Colors

Text: White T3
Background: Refer to Color Chart
Accent: Refer to Color Chart

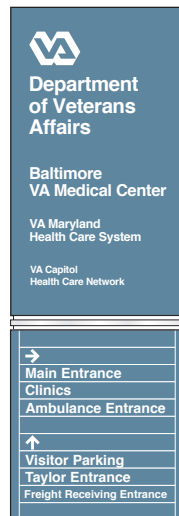
Recommendations

Position sign so drivers have a clear, unobstructed view of the sign. Keep landscaping around the sign low and position sprinklers so they project away from the sign.

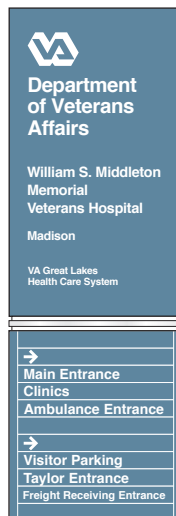
On-off illumination of sign can be controlled through the use of a timer, manual or photoelectric switch. Consult with sign fabricator at time of order for appropriate method to use.



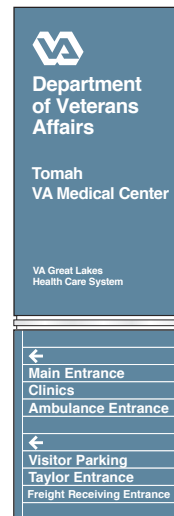
Message Layout A



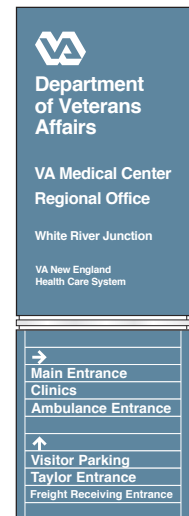
Message Layout B



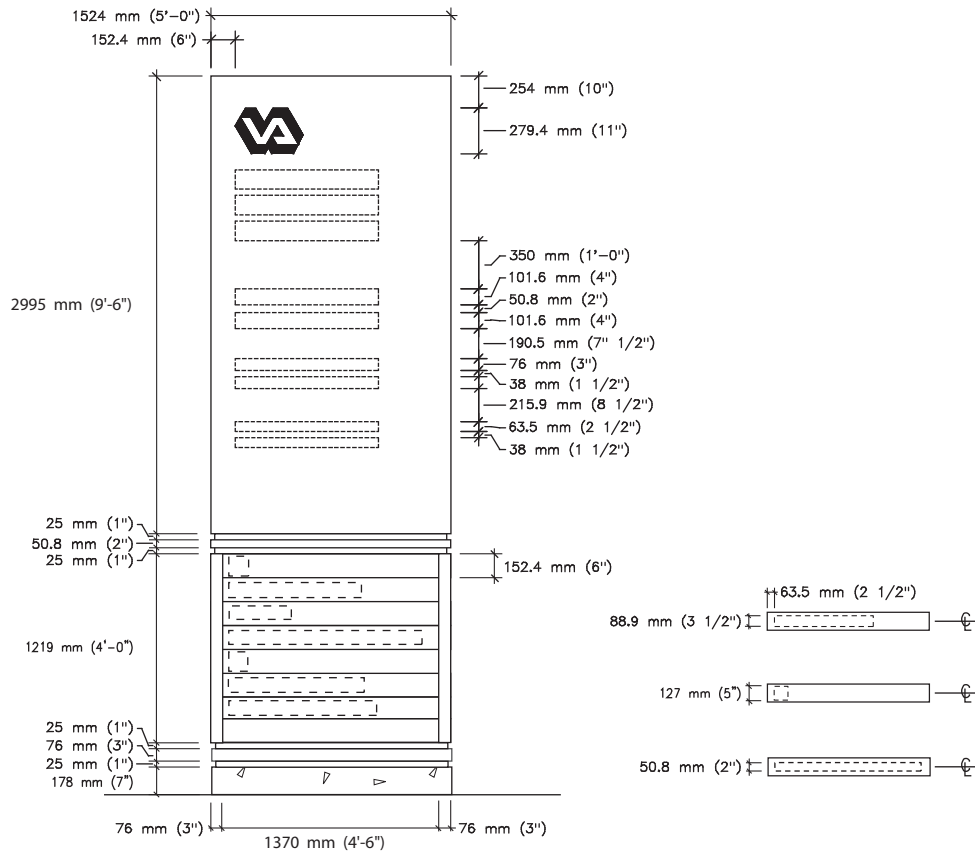
Message Layout C



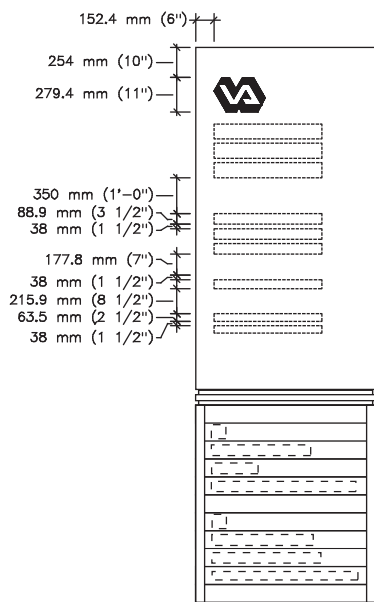
Message Layout D



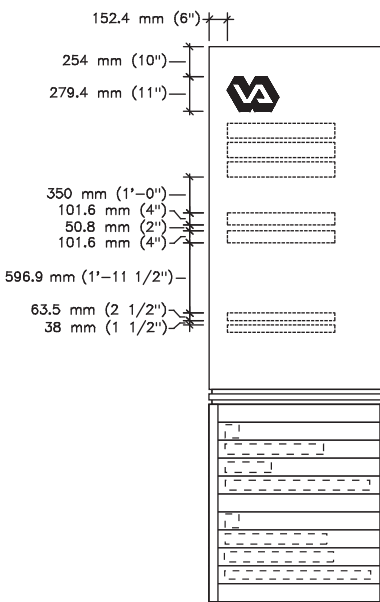
4 Panel Monument Kiosk with Directional



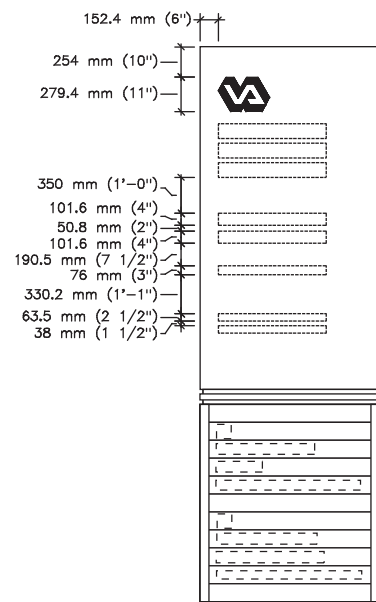
Message
Layout A



Message
Layout B



Message
Layout C



Message
Layout D

EI-15.02

Illuminated Exterior Sign

4 Panel Monument Kiosk with Directional & Address

Size

Sign Face:
4724 mm H x 1524 mm W
(15' 6" H x 5' 0" W)

Description & Use

Internally illuminated vertical free standing monument sign for identifying a medical center or the medical center's main entrance drive.

Lower section of sign has modular changeable sign panels that can be used for directional information.

The base can be constructed of concrete or other masonry material in a color and texture that will provide a coordinated architectural look with the building finishes of the medical center.

Message Configuration

(Refer to message layout drawing for dimensions)

Specific message configuration will vary depending on the particular name of a facility. Variations to the presentation of a facility's name will need special approval from Washington DC.

Care is to be taken when preparing directional text and arrow direction. Pay particular attention to the directional messages being communicate relative to the signs orientation.



Graphic Process

Illuminated, routed out copy backed with white translucent acrylic.

Colors

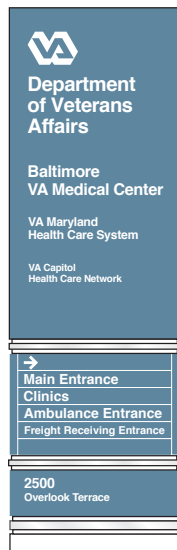
Text: White T3
Background: Refer to Color Chart
Accent: Refer to Color Chart

Recommendations

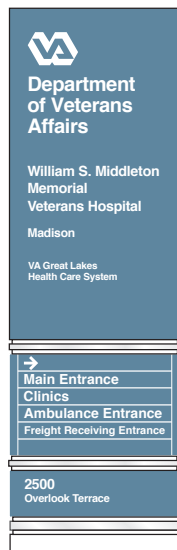
Position sign so drivers have a clear, unobstructed view of the sign. Keep landscaping around the sign low and position sprinklers so they project away from the sign.

On-off illumination of sign can be controlled through the use of a timer, manual or photoelectric switch. Consult with sign fabricator at time of order for appropriate method to use.

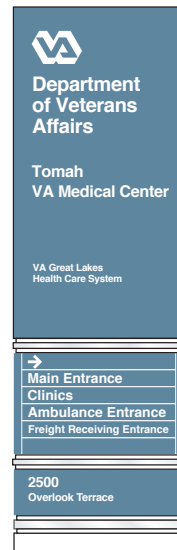
Message Layout A



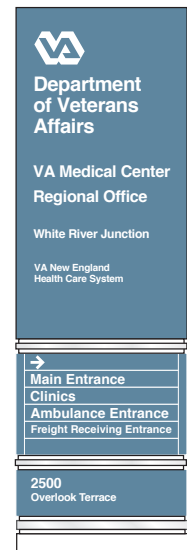
Message Layout B



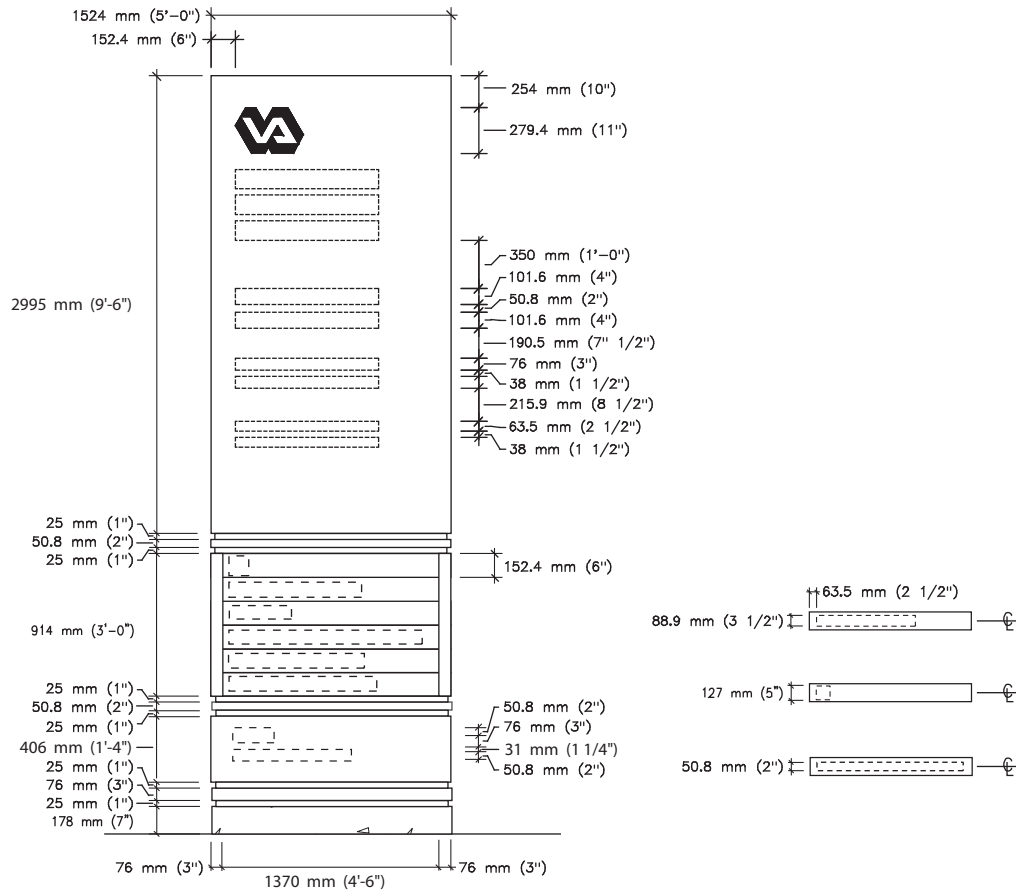
Message Layout C



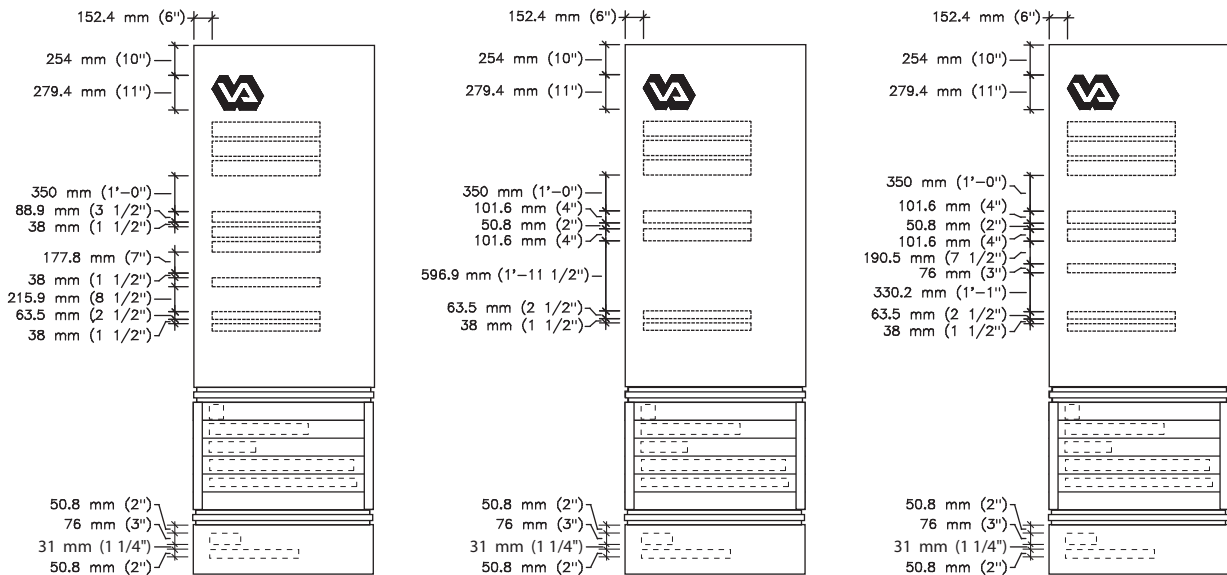
Message Layout D



4 Panel Monument Kiosk with Directional & Address



Message Layout A



Message Layout B

Message Layout C

Message Layout D

EI-16.01

Illuminated Exterior Sign

Vertical Site Monument with Electronic Message Center

Size

Sign Face:
3658 mm H x 1524 mm W
(15' 0" H x 5' 0" W)

Description & Use

Internally illuminated vertical free standing monument sign for identifying a medical center or the medical center's main entrance drive.

Electronic message centers are available from several manufacturers. These units are computer driven and require a data line connection to the sign. Contact a local sign company for site evaluation and feasibility along with the affiliated costs of connecting the message center to a computer.

Technology for electronic message centers is consistently advancing. Evaluate several manufacturers by examining the type of electronic display they sell. Look at the display in the same sun path orientation that the sign will be installed. Direct sunlight on a display can alter it's ability to be read clearly.

The base can be constructed of concrete or other masonry material in a color and texture that will provide a coordinated architectural look with the building finishes of the medical center.

Message Configuration

Refer to Sign Type EI-15.02 for message layout and configuration.

Graphic Process

Illuminated, routed out copy backed with white translucent acrylic.

Colors

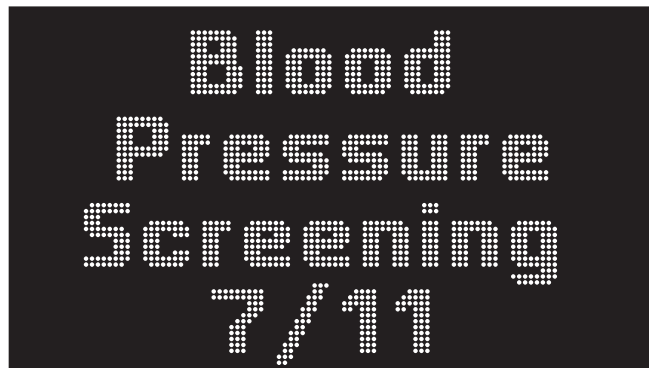
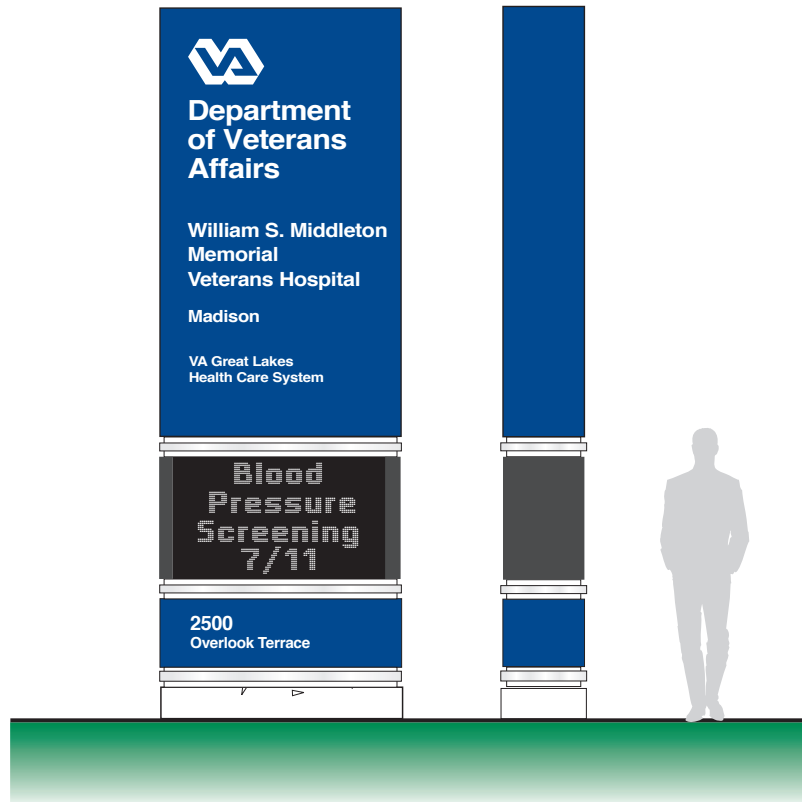
Text: White T3
Background: Refer to Color Chart
Accent: Refer to Color Chart

Recommendations

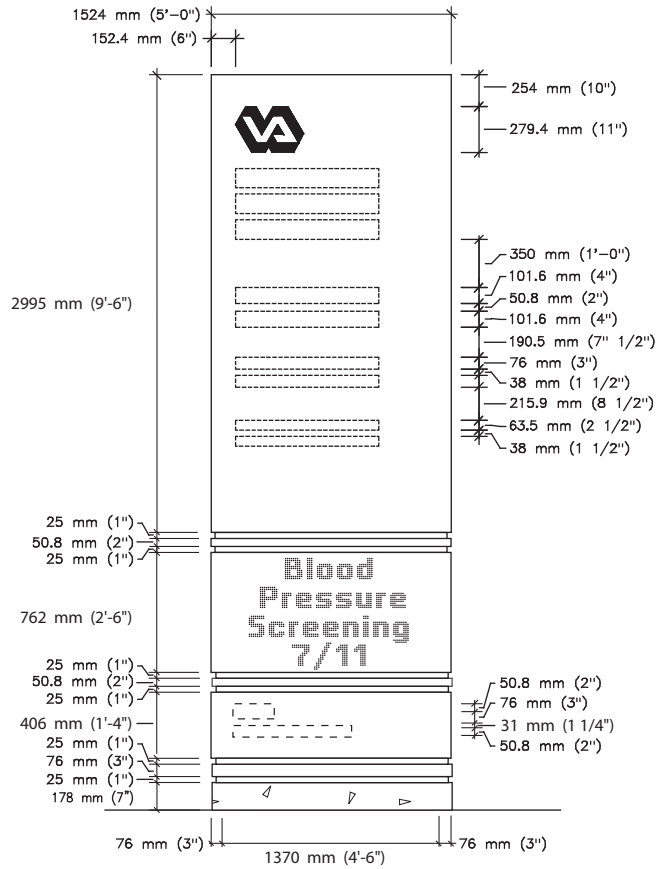
Position sign so drivers have a clear, unobstructed view of the sign. Keep landscaping around the sign low. Position sprinklers so they do not spray the sign.

When evaluating electronic message centers, consider a maintenance/service contract and have several people trained in operation and message implementation.

On-off illumination of sign can be controlled through the use of a timer, manual or photoelectric switch. Consult with sign fabricator at time of order for appropriate method to use.



Vertical Site Monument with Electronic Message Center



Message Layout A

EI-16.02

Illuminated Exterior Sign

Horizontal Site Monument with Electronic Message Center

Size

Sign Face:
2895 mm H x 3090 mm W x 535
mm D
(9' 6" H x 12' 9" W x 1' 9" D)

Description & Use

Internally illuminated vertical free standing monument sign for identifying a medical center or the medical center's main entrance drive.

Electronic message centers are available from several manufacturers. These units are computer driven and require a data line connection to the sign. Contact a local sign company for site evaluation and feasibility along with the affiliated costs of connecting the message center to a computer.

Technology for electronic message centers is consistently advancing. Evaluate several manufacturers by examining the type of electronic display they sell. Look at the display in the same sun path orientation that the sign will be installed. Direct sunlight on a display can alter its ability to be read clearly.

The base can be constructed of concrete or other masonry material in a color and texture that will provide a coordinated architectural look with the building finishes of the medical center.

Message Configuration

Refer to Sign Type EI-01.01 for message layout and configuration.

Graphic Process

Illuminated, routed out copy backed with white translucent acrylic.

Colors

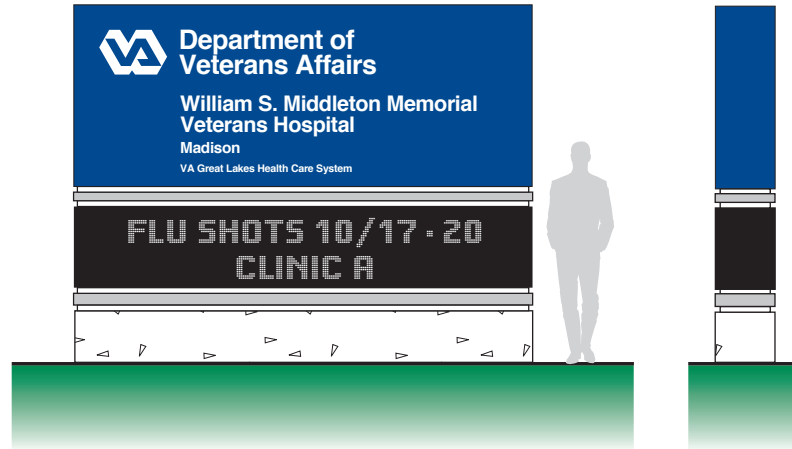
Text: White T3
Background: Refer to Color Chart
Accent: Refer to Color Chart

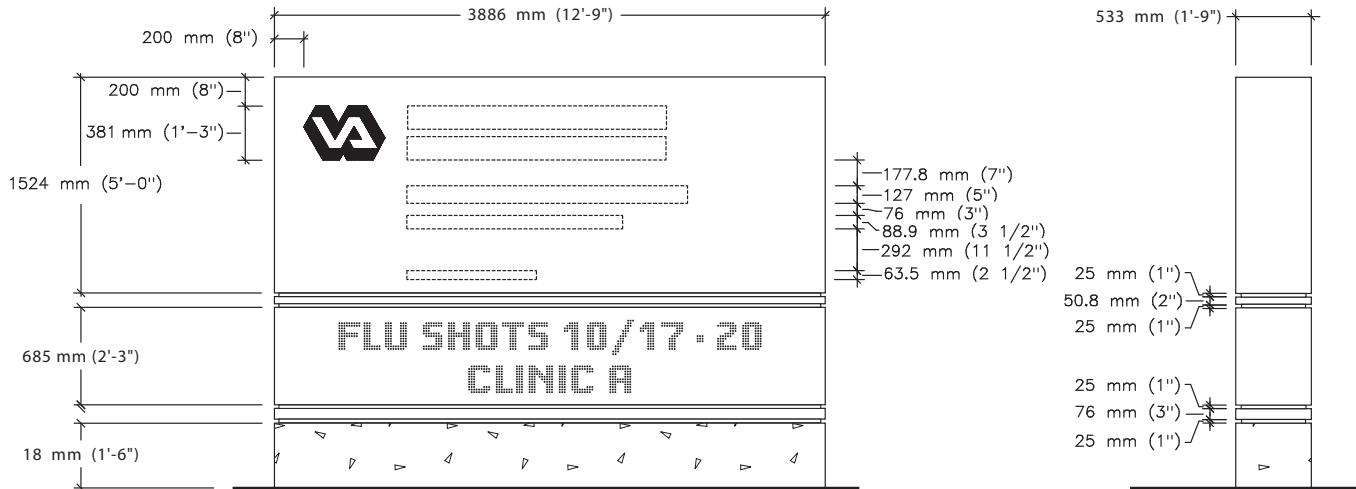
Recommendations

Position sign so drivers have a clear, unobstructed view of the sign. Keep landscaping around the sign low and position sprinklers so they project away from the sign.

When evaluating electronic message centers, consider a maintenance/service contract and have several people trained in operation and message implementation.

On-off illumination of sign can be controlled through the use of a timer, manual or photoelectric switch. Consult with sign fabricator at time of order for appropriate method to use.





Message Layout A