

EPA SWAP Program

Reviewed by a Facility Spill Responder

Robert J. May PE CHMM
Spotts, Stevens and McCoy
Bob.may@ssmgroup.com



EPA SWAP PROGRAM

Reviewed by a Facility Spill Responder

Robert J. May, P.E., CHMM
Spotts, Stevens and McCoy, Inc.



Introduction

- SWAP
 - Source Water Assessment and Protection
- Watershed Protection Data reviewed by a facility responder
- Robert J. May PE CHMM



SWAP

- Source Water Assessment and Protection Program
- 1996 Reauthorization of the Safe Drinking Water Act provided the mechanism
 - EPA mandates that each state conduct source water assessments of all public drinking supplies.
 - The assessments will form the basis for grass-root source water protection plans.



Robert J. May PE CHMM

- Former Exxon Environmental Engineer
 - Marketing Fuels Products
- Professional Engineer who certified SPCC Plans
- Director, Geoenvironmental Services
 - Spotts Stevens and McCoy (SSM)
 - Engineering and Consulting firm contracted by Pennsylvania Dept of Environmental Protection for SWAP
- Berks County, Pennsylvania LEPC Vice Chairman
- Certified Hazardous Material Manager (CHMM)
Master Level



SWAP

- Compile an Inventory of Potential Sources of Contamination (PSOC's) in the water system's watershed based on **existing readily available data**.
- Review both groundwater and surface water sources



SWAP

- Show location of the PSOCs relative to the PWS (public water supplier) intake
- Review the time of travel (TAT) for 5 hour and 25 hour
- Educate public on watershed
- Educate public on raw water quality



SWAP

- Appeals to watershed interested and active environmentalists
- EPA and now the states want the public to think of where you live in terms of your watershed basin
- Where are you from?
“I live in the Antietam Creek portion of the Schuylkill River Basin of the Delaware River Watershed.



Real life: I am not an active member of my watershed

- This is a different mindset for most industrial type people.
- One way to live life:
 - “So what, who cares”
- Another way:
 - How can I use all this information with respect to facility spill response plans?



Reverse the flow of information

Reverse the use of information

- Common dilemma now is that one environmental manager stewards multiple locations, sometimes in different states and hundreds of miles apart
- Many times the lead environmental person on site is not a career regulatory compliance specialist
- Some locations now are not operated nor manned 24-7.





Freshwater Terminals



SWAP Information

- Information provide to the PWS, local government:
 - water department
 - municipal authority
 - municipal government
 - Emergency Management Coordinator
- Available at the local library
- Best data is the GIS maps of PSOCs



PSOCs

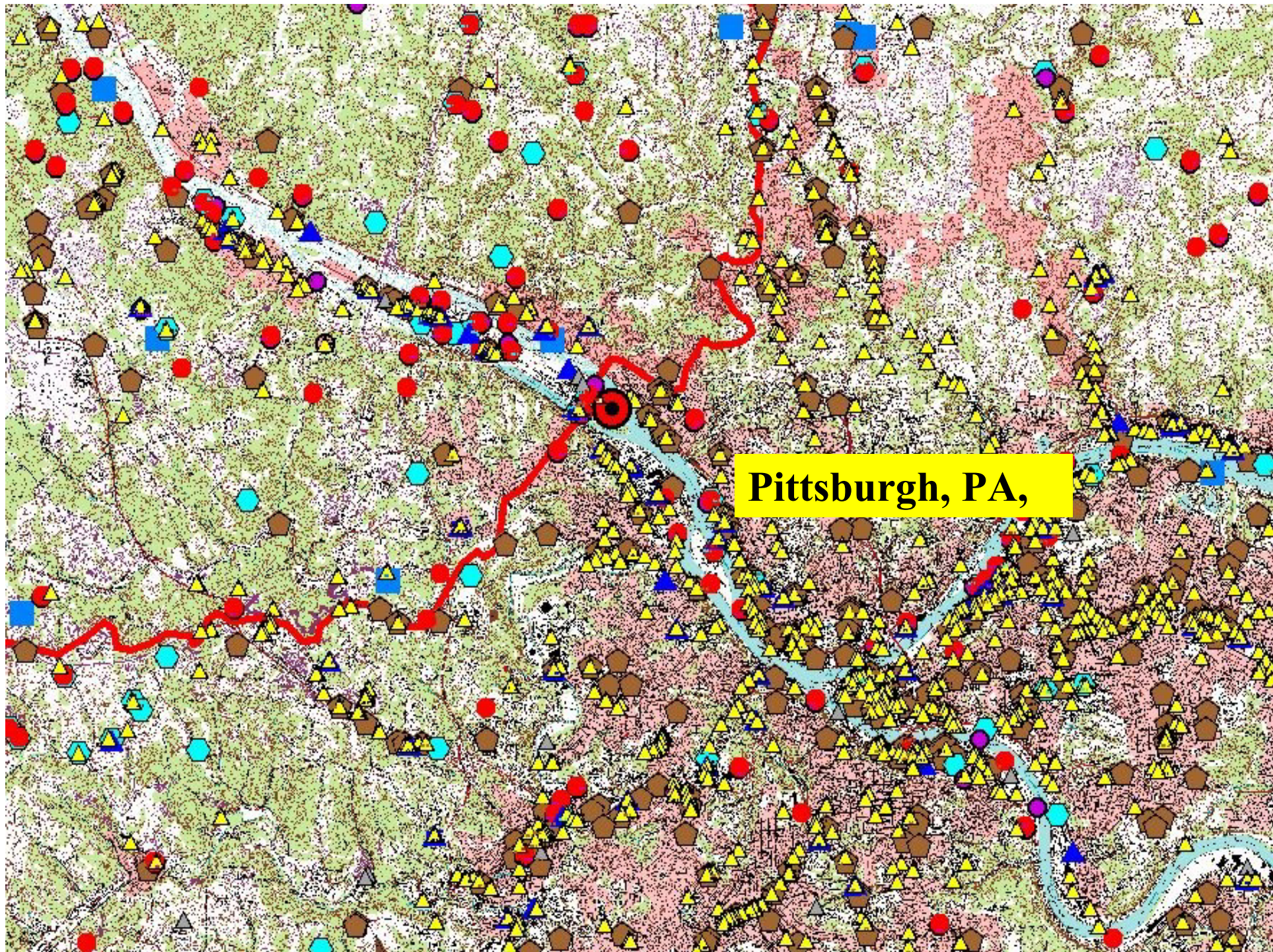
- Qualitative analysis
 - PSOC's ranked A-F
 - "A" greatest potential threat
 - "F" least potential threat
- Based on
 - Contaminant and its physical and chemical properties
 - Location of contaminant source
 - Quantity of contaminant potentially released
 - Best Management Practices



Review the spatial information

- Find your facility on the available maps
- Locate downstream potable water intake
- Review the other PSOCs and their ranking
- Amend your facility response plan with the new information





Pittsburgh, PA,

Final Actions

- Get a copy of the drawing from the local Emergency Management Coordinator
- Obtain an electronic copy from the state regulatory agency (request in JPEG format)
- Some states had this information on a special SWAP website (Illinois)
- Many states now (after Sept 11 incidents) require a written request prior to release of information



Resource information

Alabama	jp@adem.state.al.us	Montana	jmeek@mt.gov
Alaska	sbraumil@envircon.state.ak.us	Nebraska	deq076@deq.state.ne.us
Arizona	kparke@misc.wv.us	Nevada	tullah@ndep.carson-city.nv.us
Arkansas	lgodfrey@mail.doh.state.ar.us	New Hampshire	pillsbury@deswspws.mv.com
California	lwalker2@dhs.ca.gov	New Jersey	skrietz@dep.state.nj.us
Colorado	gary.karst@state.co.us	New Mexico	jennifer_wellman@nmenv.state.nm.us
Connecticut	lori.mathieu@po.state.ct.us	New York	rae01@health.state.ny.us
Delaware	jbarndt@dnrec.state.de.us	North Carolina	Robert.Midgette@ncmail.net
Florida	donniecclaugherty@dep.state.fl.us	North Dakota	sradig@state.nd.us
Georgia	payne_steve@mail.dnr.state.ga.us	Ohio	christopher.kenah@epa.state.oh.us
Hawaii	waterbill@aol.com	Oklahoma	shields.rance@deqmail.state.ok.us
Idaho	sshort@deq.state.id.us	Oregon	stewart.sheree@deq.state.or.us
Illinois	epa3188@epa.il.us	Pennsylvania	joslee@state.pa.us
Indiana	LMABRY@dem.state.in.us	Rhode Island	clayc@doh.state.ri.us
Iowa	dennis.alt@dnr.state.ia.us	South Carolina	devlinrj@columb32.dhec.state.sc.us
Kansas	(800) 426-4791	South Dakota	anitav@denr.state.sd.us
Kentucky	wilson_ja@mail.nr.state.ky.us	Tennessee	tmoss@mail.state.tn.us
Louisiana	howardf@deq.state.la.us	Texas	beross@tnrcc.state.tx.us
Maine	Andrews.L.Tolman@state.me.us	Utah	snewman@deq.state.ut.us
Maryland	jgrace@mde.state.md.us	Vermont	elizh@dec.anr.state.vt.us
Massachusetts	tgallagher@state.ma.us	Virginia	cadkins@vdh.state.va.us
Michigan	BrownElg@state.mi.us	Washington	david.jennings@doh.wa.gov
Minnesota	bruce.olsen@health.state.mn.us	West Virginia	wtoomey@wvdhhr.org
Mississippi	crawford@deq.state.ms.us	Wisconsin	helmuj@dnr.state.wi.us
Missouri	http://www.cares.missouri.edu/swap/	Wyoming	kparke@misc.wv.us
		District of Columbia	kelly.greene@dc.gov

