



# **Conoco Inc. Americas Incident Support Team**

## **Overview of Emergency Management Team Administration, Activation, Deployment and Response Operations**

**November 28, 2001**

**Lon A. Langlois**  
Emergency Response Coordinator, North America  
P.O. Box 2197  
Houston, Texas 77252-2197  
(281) 293-6795



# Americas Incident Support Team

- **27 ICS positions**
- **87 volunteers**
- **Trained in the Incident Command System and Emergency Management**
- **Participate in 2 weeks of training and exercises annually**



# Americas Incident Support Team

## ■ Benefits

- ◆ Leveraged resources across functions
  - ☞ Downstream North America
  - ☞ Conoco Gas & Power
  - ☞ EP-US, South America, Canada
  - ☞ Marine
- ◆ Sustainable, systems approach



# Americas Incident Support Team

## ■ Benefits

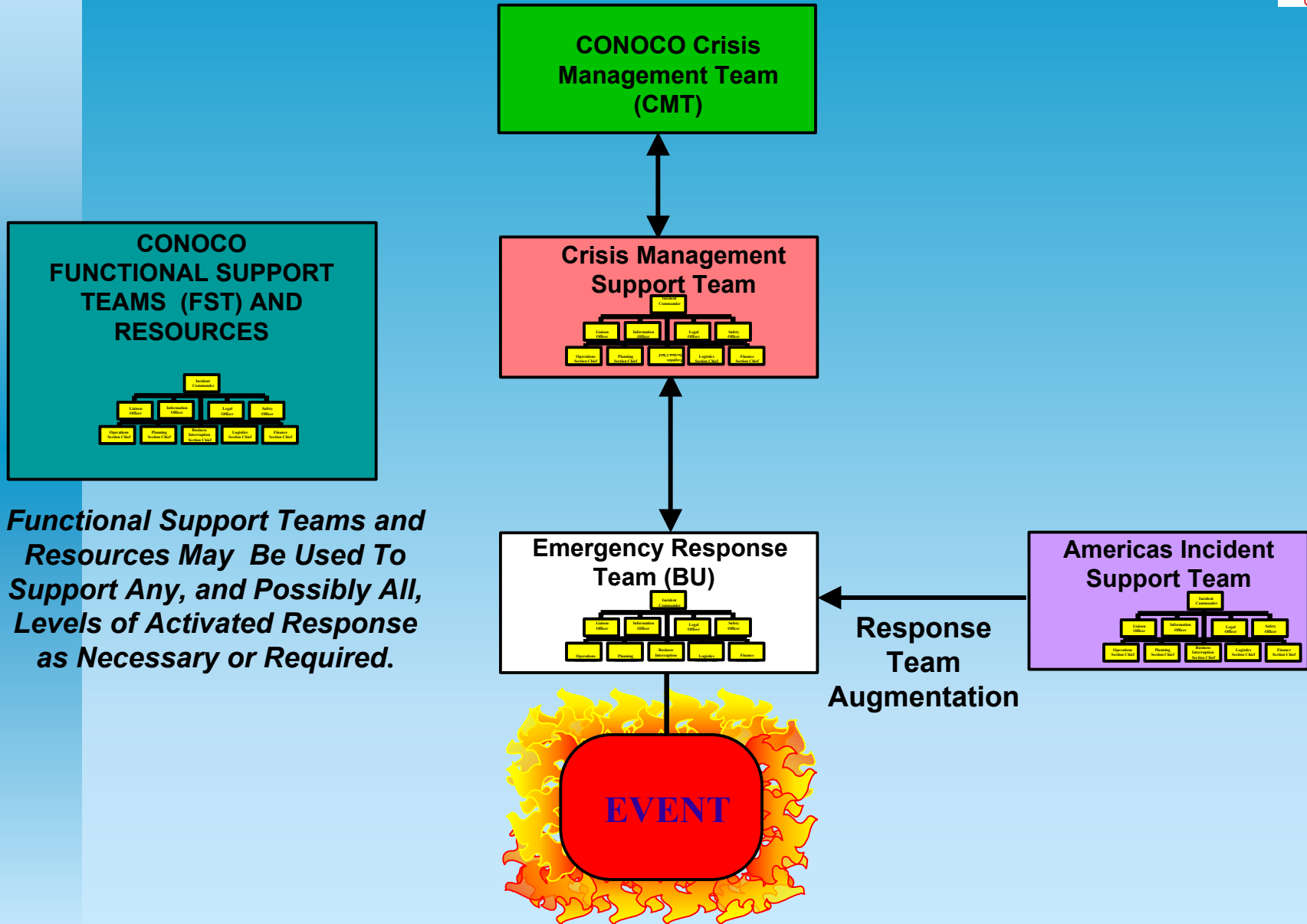
- ◆ Minimize business impact through trained, consistent, volunteer resources
- ◆ Reduce cost of sustainable multiple regional response teams
- ◆ All risk, mobile, management team



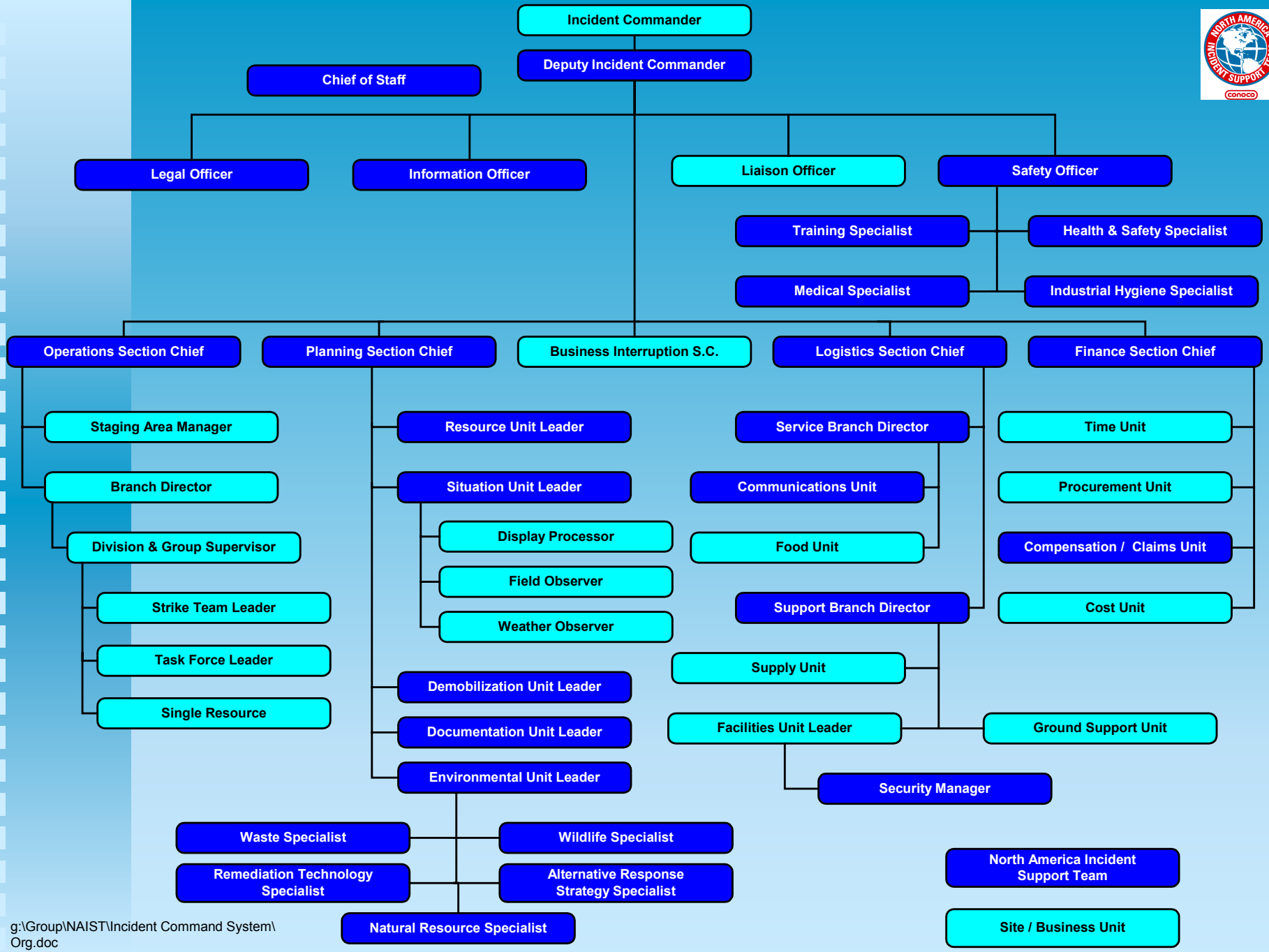
# Americas Incident Support Team

- **Not a Fire Brigade**
- **Not an Oil Spill Team**
- **Not a HAZMAT Team**
- **Not a replacement for Tier 1 response**
- **Do not take over emergency management**

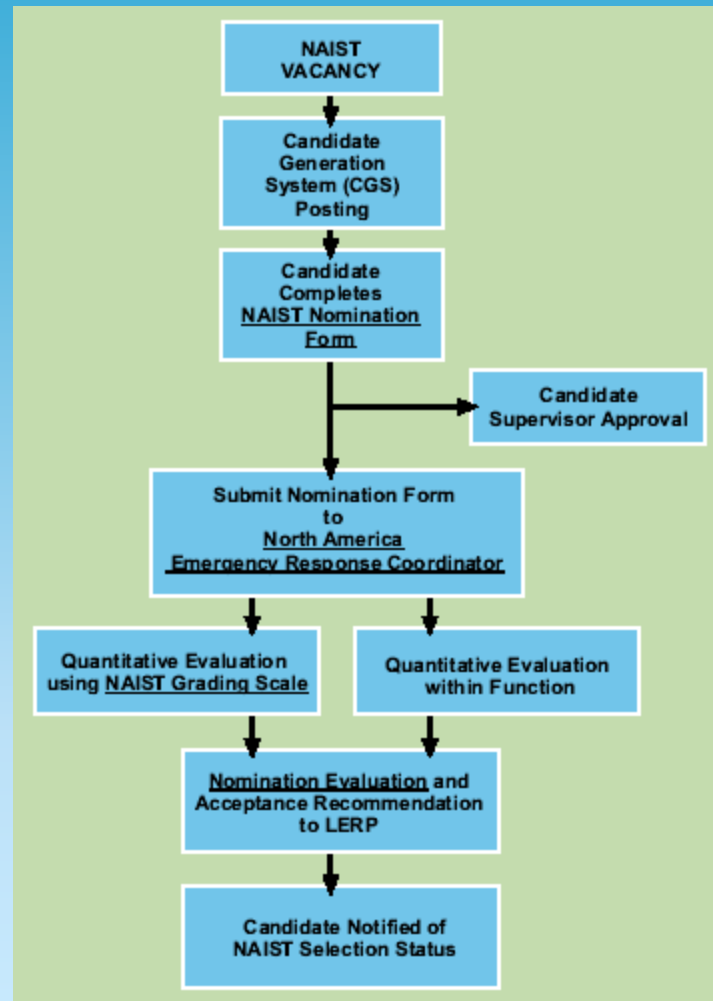
# Conoco's Tiered Response



*Functional Support Teams and Resources May Be Used To Support Any, and Possibly All, Levels of Activated Response as Necessary or Required.*

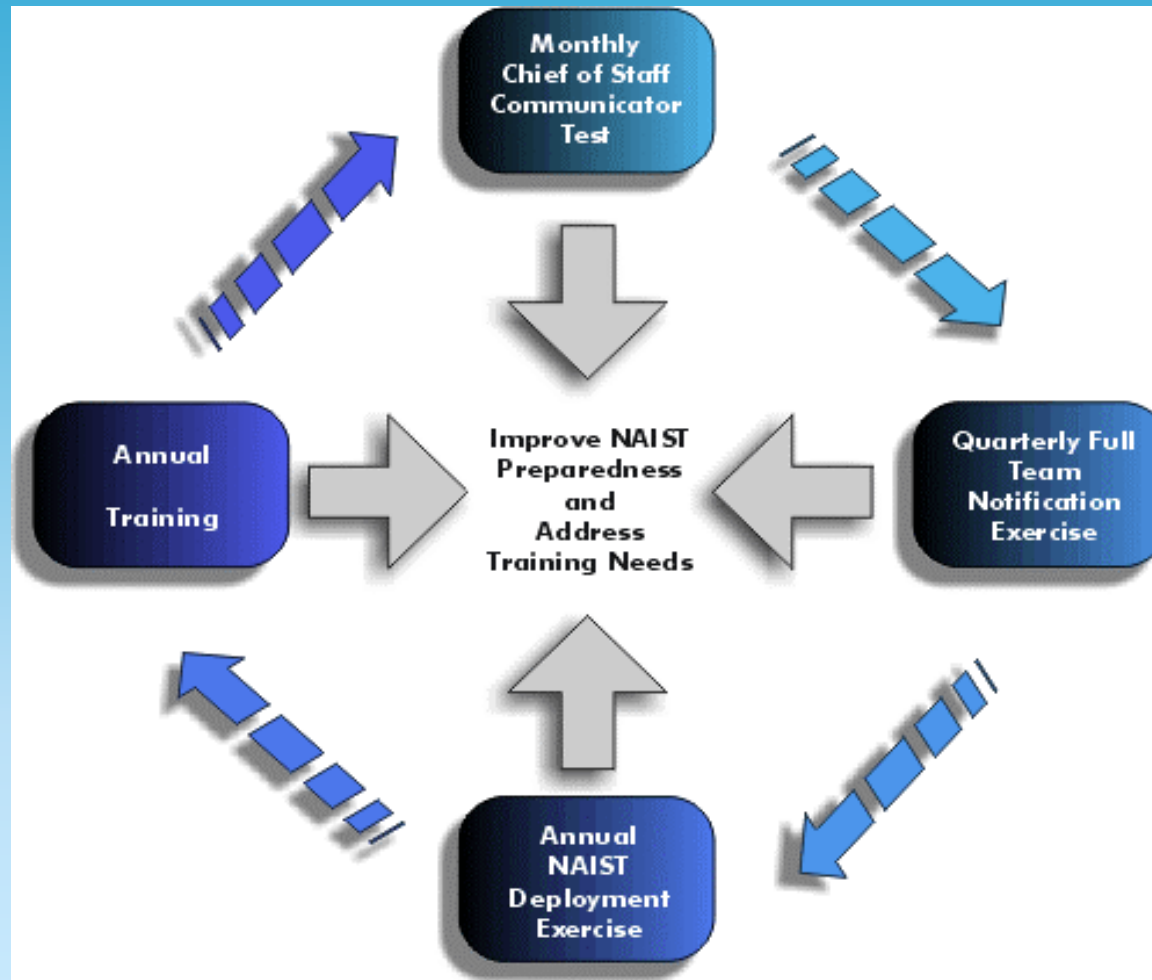


# Americas IST Administration: Member Selection Process

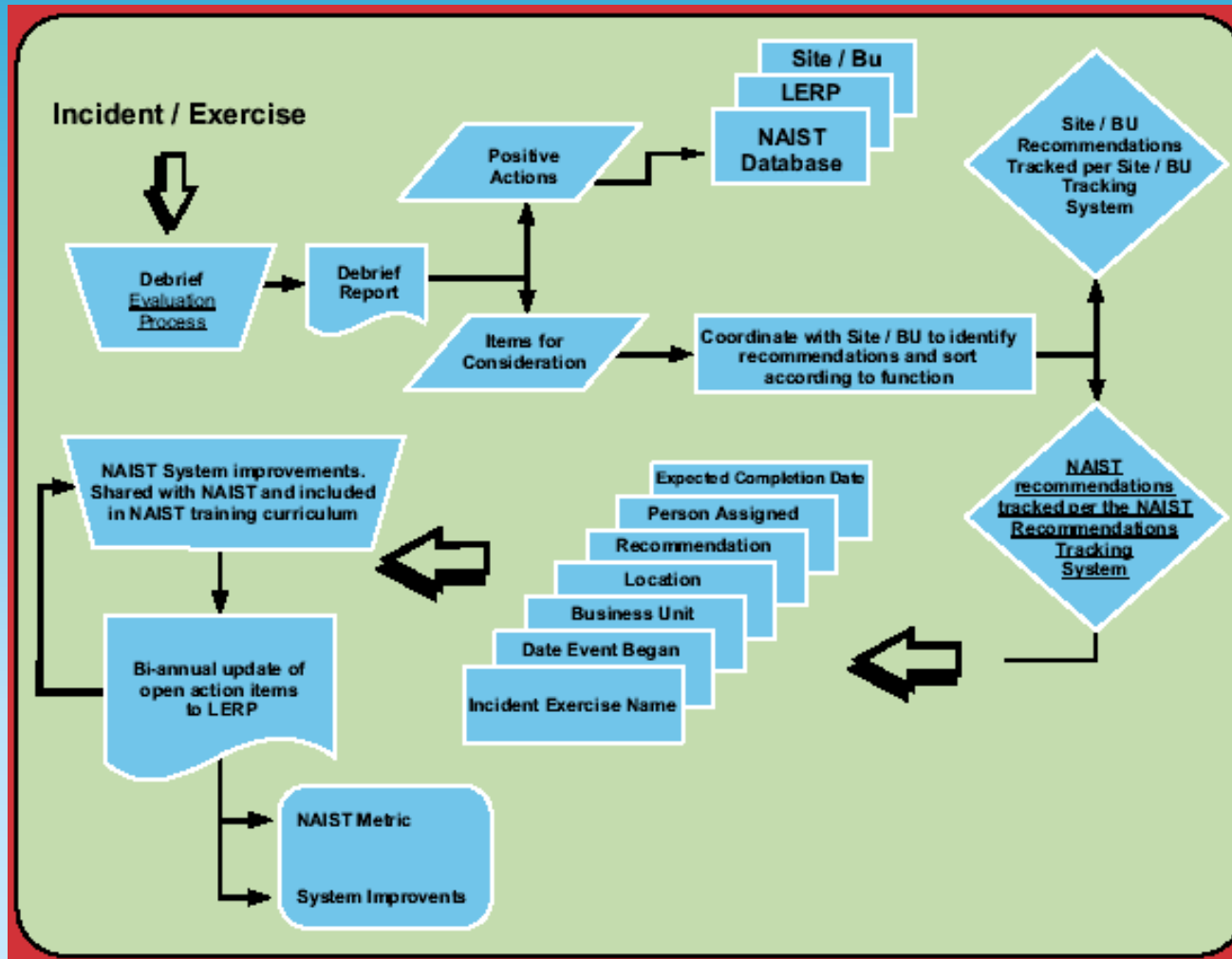




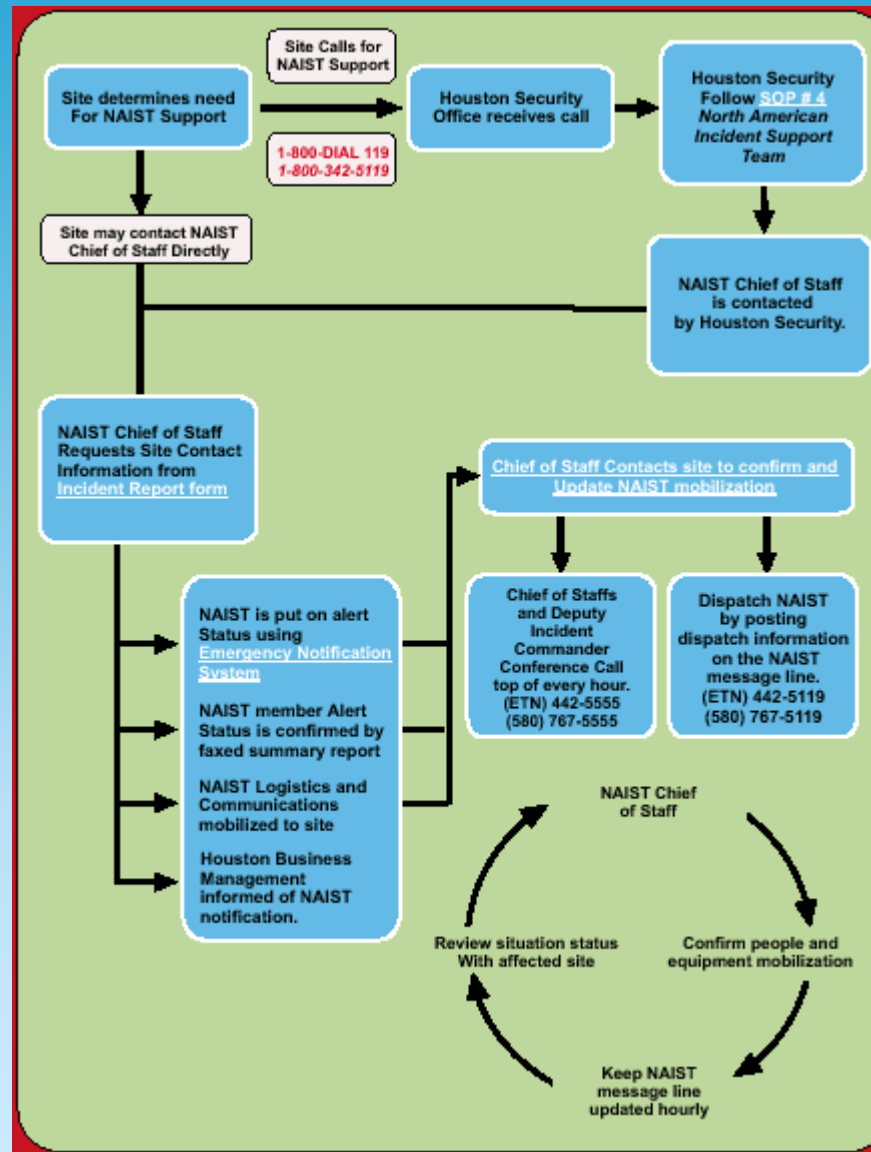
# Americas IST Administration: Training Plan



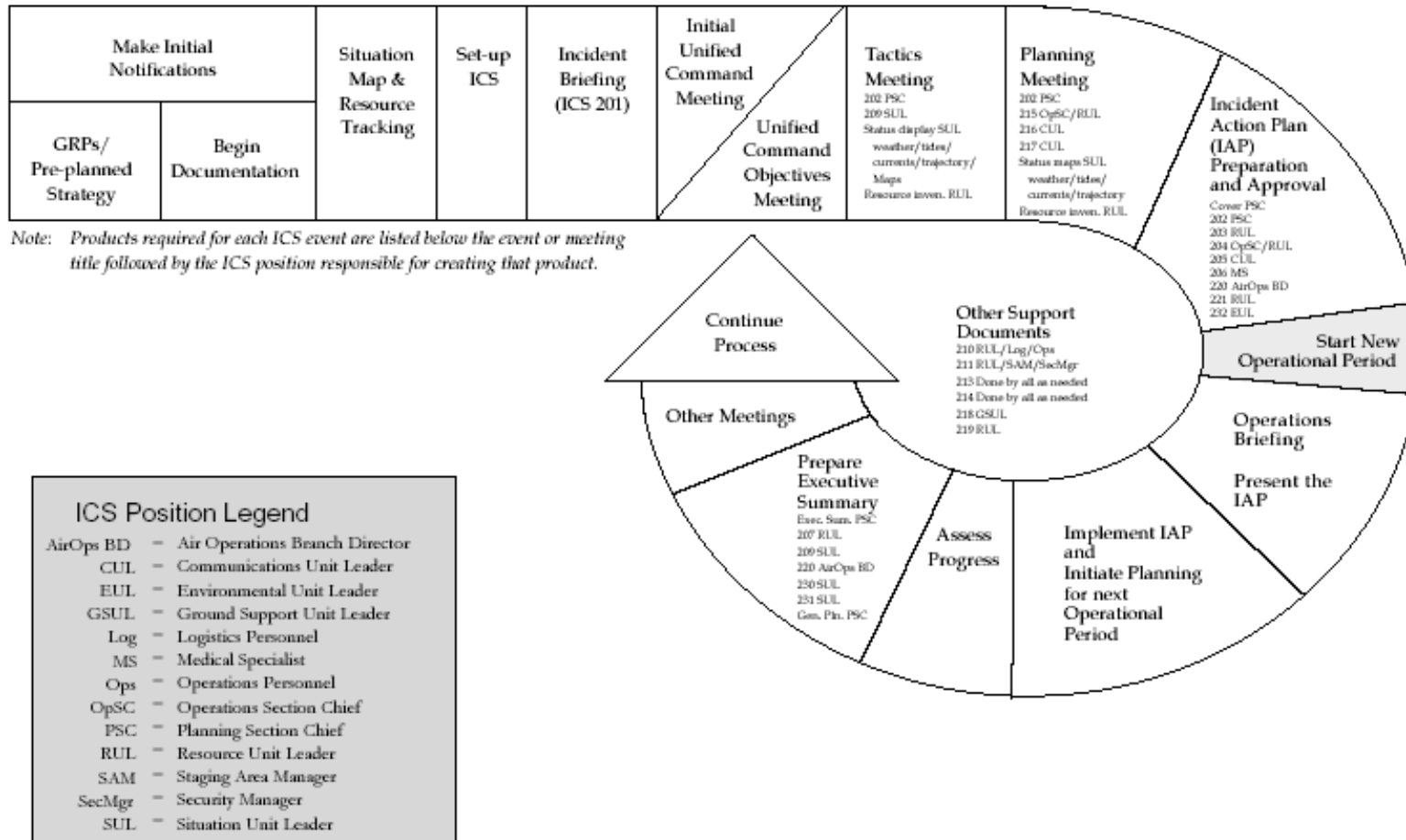
# Americas IST Administration: Recommendation Tracking Process



# Americas IST Response Operations: Activation & Deployment



# Americas IST Response Operations: Planning Cycle Process



ICS Position Legend	
AirOps BD	- Air Operations Branch Director
CUL	- Communications Unit Leader
EUL	- Environmental Unit Leader
GSUL	- Ground Support Unit Leader
Log	- Logistics Personnel
MS	- Medical Specialist
Ops	- Operations Personnel
OpSC	- Operations Section Chief
PSC	- Planning Section Chief
RUL	- Resource Unit Leader
SAM	- Staging Area Manager
SecMgr	- Security Manager
SUL	- Situation Unit Leader



# Americas IST Response Operations: Operations Flowchart

