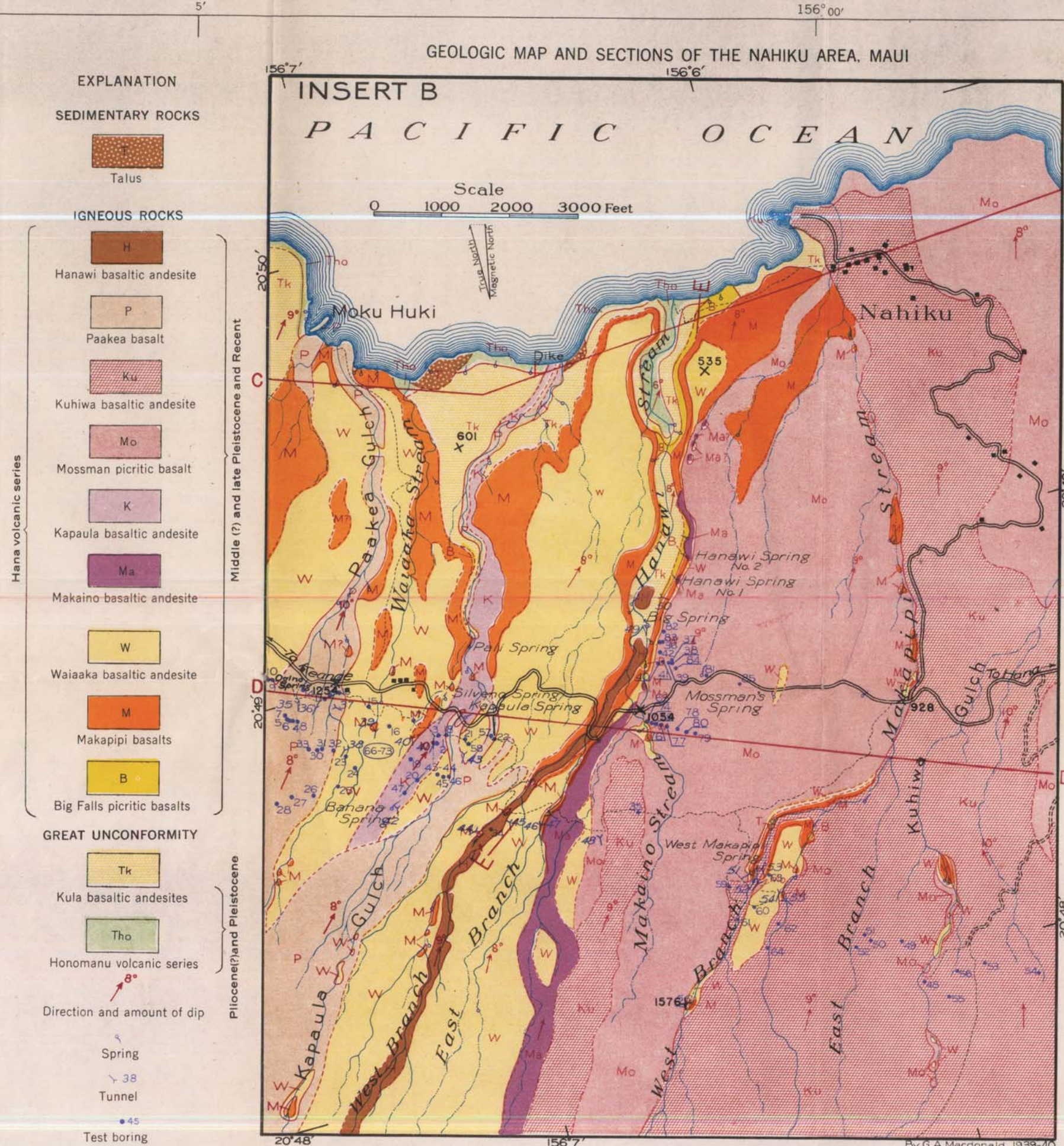
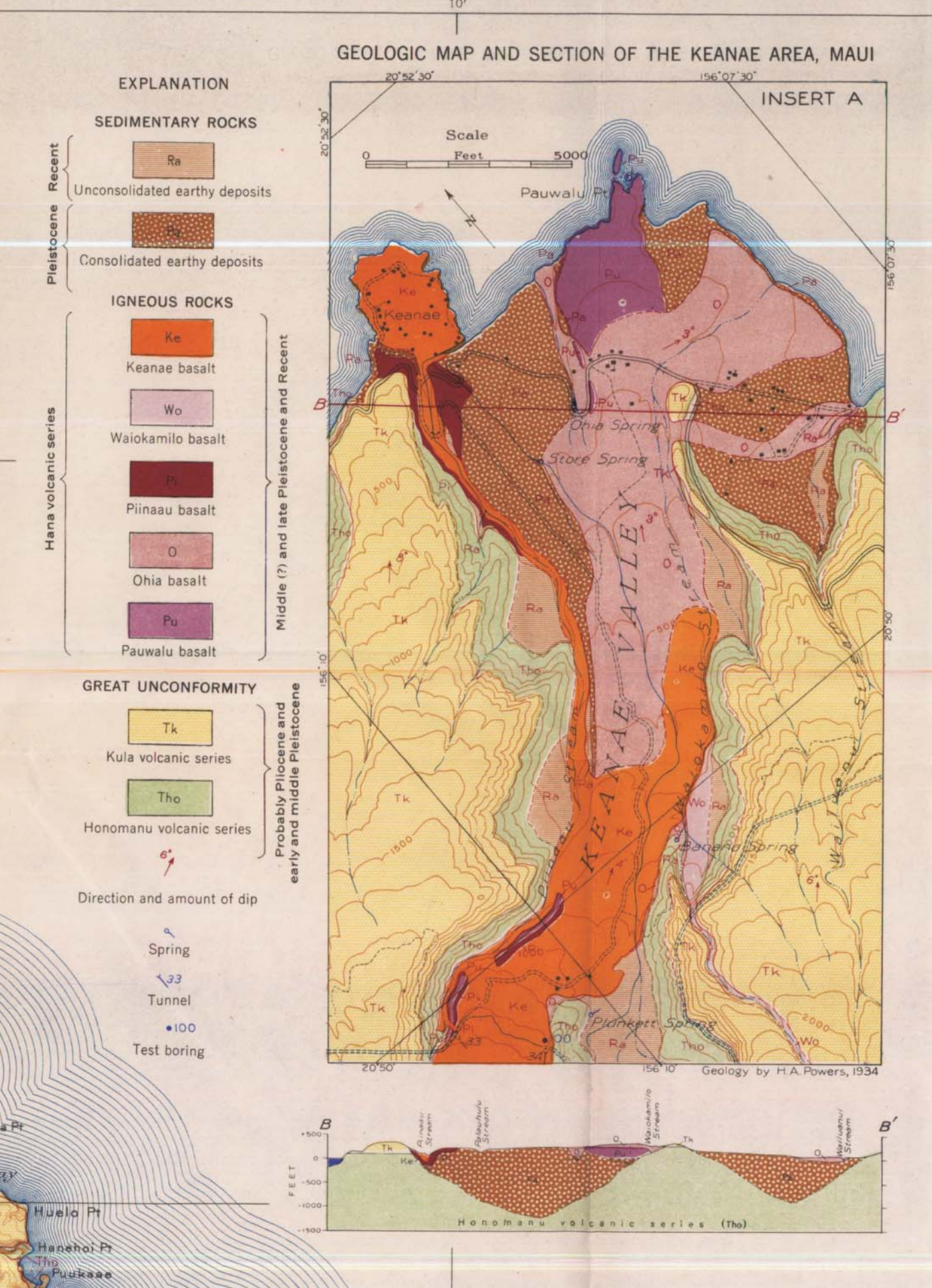
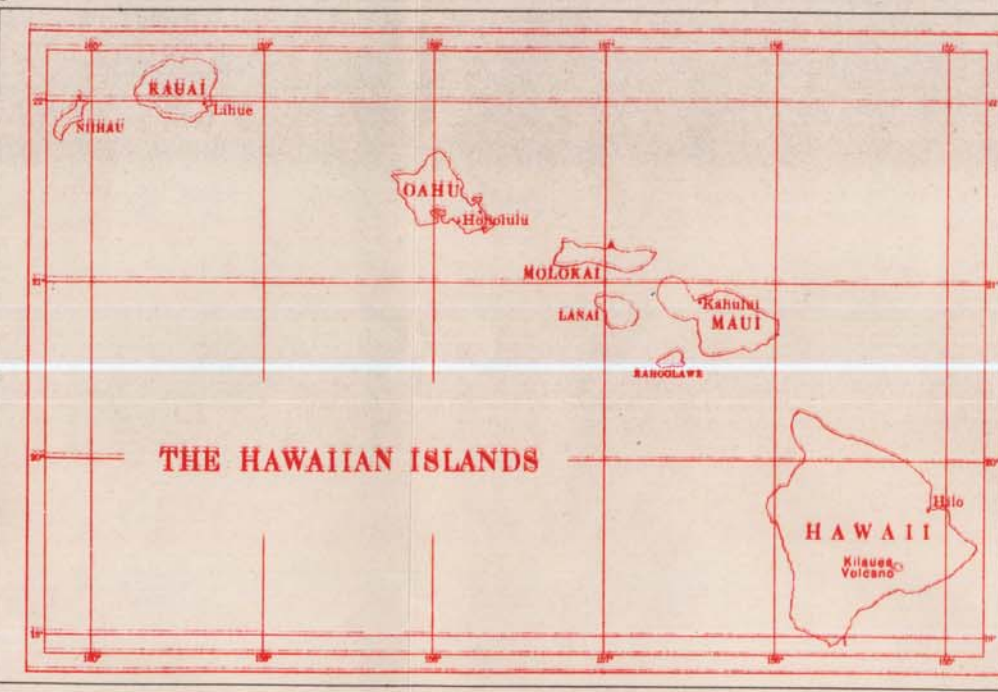


### EXPLANATION

### EXPLANATION

#### SEDIMENTARY ROCKS

**Unconsolidated deposits**  
 Clarity younger strata consisting of unconsolidated sand, gravel, silt, and clay, and of soft mudstone and shale. The map shows the Kula series, which is a thick sequence of sandstone and shale, and the Honohonu series, which is a thick sequence of sandstone and shale. The map also shows the Makalei series, which is a thick sequence of sandstone and shale.

**Consolidated sandy deposits**  
 Mostly composed of quartzite sandstone, which is a thick sequence of sandstone and shale. The map shows the Kula series, which is a thick sequence of sandstone and shale, and the Honohonu series, which is a thick sequence of sandstone and shale. The map also shows the Makalei series, which is a thick sequence of sandstone and shale.

**Consolidated shaly deposits**  
 Mostly composed of shale, which is a thick sequence of sandstone and shale. The map shows the Kula series, which is a thick sequence of sandstone and shale, and the Honohonu series, which is a thick sequence of sandstone and shale. The map also shows the Makalei series, which is a thick sequence of sandstone and shale.

**Recent mud flow**  
 Family of recent mud flows, which is a thick sequence of sandstone and shale. The map shows the Kula series, which is a thick sequence of sandstone and shale, and the Honohonu series, which is a thick sequence of sandstone and shale. The map also shows the Makalei series, which is a thick sequence of sandstone and shale.

#### IGNEOUS ROCKS

**WEST MAUI ROCKS**  
 Lihou volcanic series  
 Includes older and associated rocks of the Lihou, Pihao, Pihao, and Pihao series. The map shows the Lihou series, which is a thick sequence of sandstone and shale, and the Pihao series, which is a thick sequence of sandstone and shale. The map also shows the Pihao series, which is a thick sequence of sandstone and shale.

**EAST MAUI ROCKS**  
 Kula volcanic series  
 Includes older and associated rocks of the Kula, Pihao, Pihao, and Pihao series. The map shows the Kula series, which is a thick sequence of sandstone and shale, and the Pihao series, which is a thick sequence of sandstone and shale. The map also shows the Pihao series, which is a thick sequence of sandstone and shale.

#### GREAT EROSIONAL UNCONFORMITY

**Kula volcanic series**  
 This series of basaltic andesite, andesite, and basalt, which is a thick sequence of sandstone and shale. The map shows the Kula series, which is a thick sequence of sandstone and shale, and the Pihao series, which is a thick sequence of sandstone and shale. The map also shows the Pihao series, which is a thick sequence of sandstone and shale.

**Honohonu volcanic series**  
 This series of basaltic andesite, andesite, and basalt, which is a thick sequence of sandstone and shale. The map shows the Honohonu series, which is a thick sequence of sandstone and shale, and the Pihao series, which is a thick sequence of sandstone and shale. The map also shows the Pihao series, which is a thick sequence of sandstone and shale.

**Makalei volcanic series**  
 This series of basaltic andesite, andesite, and basalt, which is a thick sequence of sandstone and shale. The map shows the Makalei series, which is a thick sequence of sandstone and shale, and the Pihao series, which is a thick sequence of sandstone and shale. The map also shows the Pihao series, which is a thick sequence of sandstone and shale.

#### SYMBOLS

● Test hole  
 ○ Dug well  
 ▲ Spring  
 ◆ Spring (See table in text)  
 ■ Water hole or ancient Hawaiian well  
 7/50 Water development or exploration tunnel described in text

□ Maui-type well not in use  
 □ Maui-type well with vertical shaft  
 □ Maui-type well with inclined shaft  
 □ Maui-type well supplemented by drilled well  
 □ Drilled well equipped with pump at Kahului, Paunoihi, Anoihi, and Hana

∇ Strike and dip of beds  
 ∇ Prevailing dip of beds  
 × Fossiliferous marine limestone (See text)

— Normal fault showing downthrown side, dotted where concealed and dashed where inferred

○ Some outcrops of rock are too small to show

GEOLOGIC AND TOPOGRAPHIC MAP  
 ISLAND OF MAUI  
 HAWAII  
 1942

SHOWING WELLS, SPRINGS, TUNNELS, SHAFTS, AND STRUCTURE SECTIONS

GEOLOGY BY HAROLD T. STEARNS  
 1938-1942  
 GEOLOGICAL SURVEY  
 UNITED STATES DEPARTMENT OF THE INTERIOR

