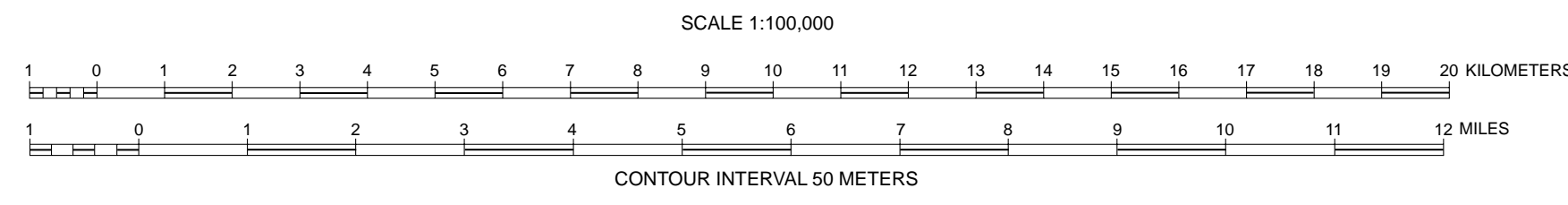
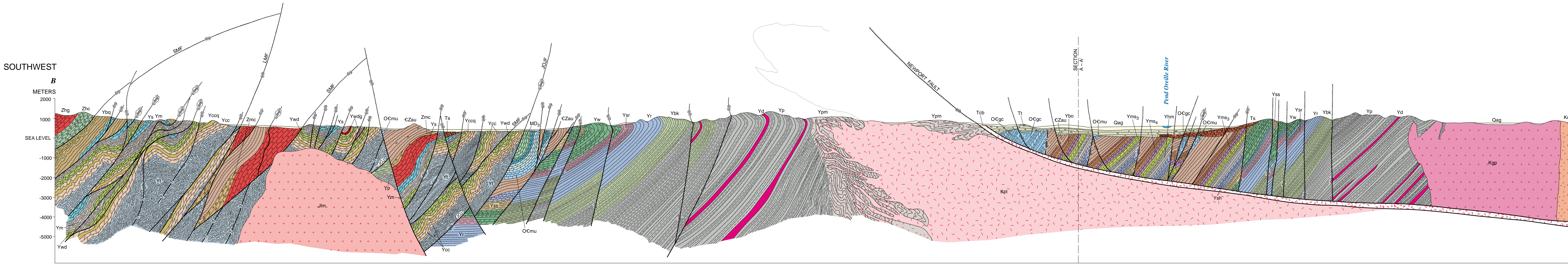
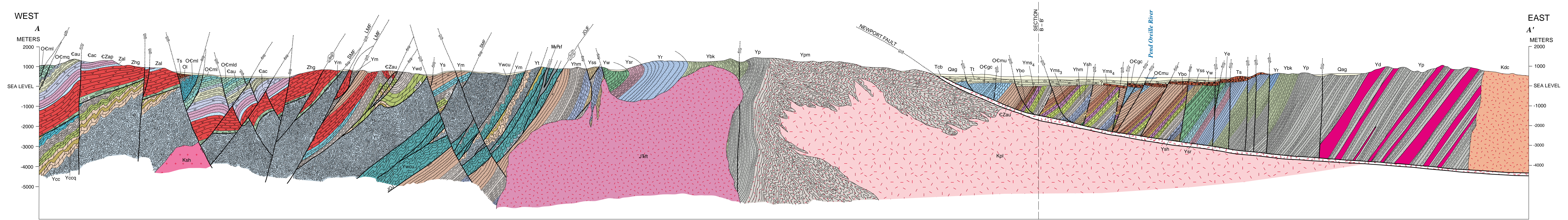


Base map and digital layers (roads and topographic contours) were prepared from publicly available digital line graph (DLG) data, Chewelah 1:100,000 metric quadrangle.
Universal Transverse Mercator projection, zone 11



Geology mapped by Fred K. Miller, 1963-1989;
Lynn D. Clark, 1963-1964.
Digital preparation by Pamela M. Cossette and Pamela D. Derkey.
Edited by Jean Zigler.
Manuscript approved for publication November 24, 2000.



GEOLOGIC MAP OF THE CHEWELAH 30' X 60' QUADRANGLE, WASHINGTON AND IDAHO

By
Fred K. Miller

Digital preparation by
Pamela M. Cossette and Pamela D. Derkey
2000