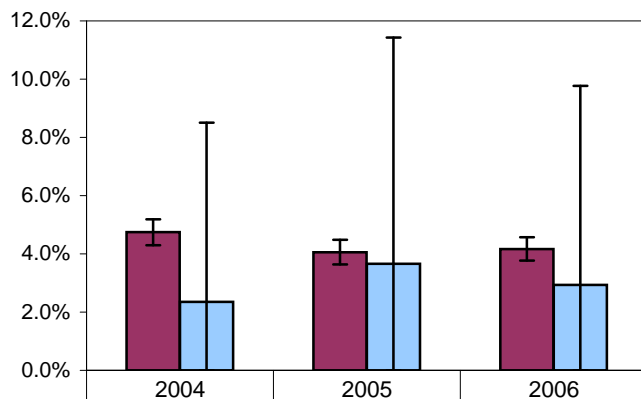


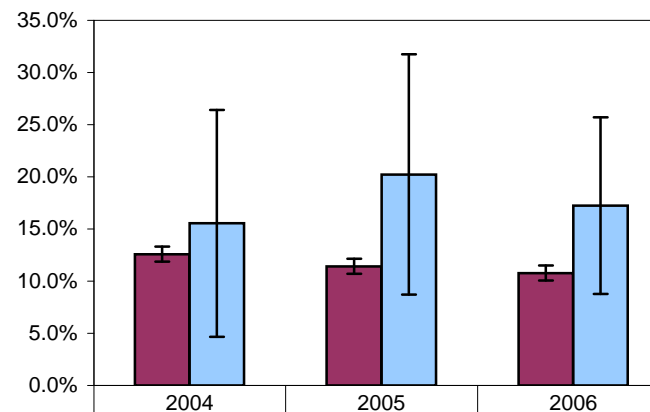
2004-2006 IQI Mortality Rates Columbia Memorial Hospital

Heart Failure Mortality Rate



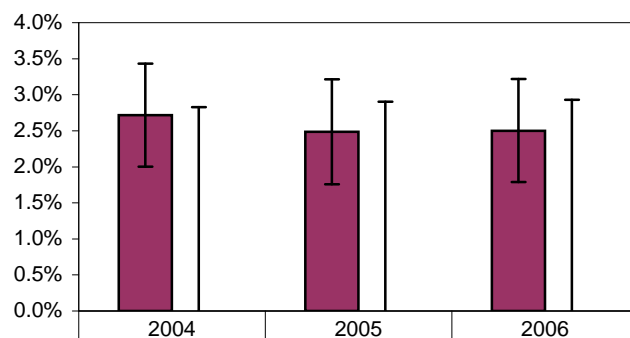
■ All Oregon Hospitals	4.7%	4.1%	4.2%
■ Columbia Memorial Hospital	2.3%	3.7%	2.9%

Stroke Mortality Rate



■ All Oregon Hospitals	12.6%	11.4%	10.8%
■ Columbia Memorial Hospital	15.5%	20.2%	17.2%

Gastrointestinal (GI) Hemorrhage Mortality Rate



■ All Oregon Hospitals	2.7%	2.5%	2.5%
■ Columbia Memorial Hospital	0.0%	0.0%	0.0%