

## 03328500 EEL RIVER NEAR LOGANSFORT, IN

LOCATION.--Lat 40°46'55", long 86°15'50", in NE $\frac{1}{4}$ SE $\frac{1}{4}$  sec.14, T.27 N., R.2 E., Cass County, Hydrologic Unit 05120104, (LOGANSFORT, IN quadrangle), on right bank at downstream side of bridge on Adamsboro Road, 5.5 mi northeast of Logansport, and 7.4 mi upstream from mouth.

DRAINAGE AREA.--789 mi<sup>2</sup>.

PERIOD OF RECORD.--July 1943 to current year. Monthly discharge only for some periods, published in WSP 1305.

REVISED RECORDS.--WSP 2109: Drainage area.

GAGE.--Water-stage recorder. Datum of gage is 621.50 ft above National Geodetic Vertical Datum of 1929. Prior to Aug. 16, 1956, nonrecording gage at same site and datum.

REMARKS.--Records good except for estimated daily discharges, which are poor.

EXTREMES OUTSIDE PERIOD OF RECORD.--Flood of May 18, 1943, reached a stage of 13.2 ft, from floodmark, discharge, 17,000 ft<sup>3</sup>/s.

DISCHARGE, CUBIC FEET PER SECOND  
WATER YEAR OCTOBER 2002 TO SEPTEMBER 2003  
DAILY MEAN VALUES

DAY	OCT	NOV	DEC	JAN	FEB	MAR	APR	MAY	JUN	JUL	AUG	SEP
1	158	158	166	e250	e187	e195	532	223	346	214	467	479
2	153	154	e150	350	e190	e190	448	230	326	207	477	3,110
3	153	153	e145	302	e190	e190	406	236	321	195	988	3,830
4	157	153	e140	257	e190	e190	389	232	329	192	2,030	3,250
5	158	159	e140	231	e444	e193	1,320	511	319	2,600	1,510	2,160
6	158	169	e140	e210	e430	e195	2,100	1,590	299	3,950	1,470	1,380
7	155	171	e138	e200	e365	e260	1,410	1,300	286	7,010	975	988
8	153	173	e137	e190	e280	e360	1,330	1,490	280	7,930	722	773
9	152	168	e139	e200	e250	e1,300	1,200	3,970	274	7,410	603	636
10	152	174	e141	e205	e240	e1,100	906	5,700	268	5,610	518	545
11	150	183	e146	e210	e235	e620	717	4,900	267	3,340	451	483
12	148	221	e150	e275	e230	e480	600	4,060	303	2,300	406	432
13	150	239	155	e270	e225	e450	513	2,990	677	1,620	373	395
14	147	217	156	e210	e220	1,210	449	2,170	2,430	1,240	355	369
15	145	194	155	e200	e215	1,290	403	1,670	1,620	1,030	337	346
16	145	181	153	e190	e255	931	371	1,680	905	871	319	334
17	147	175	153	e185	e230	838	346	1,330	620	732	315	318
18	148	169	160	e184	e200	769	326	1,070	487	635	281	296
19	163	170	174	e185	e190	674	309	887	440	564	263	281
20	168	169	192	e185	e180	594	299	762	397	503	249	274
21	163	173	221	e184	e190	570	287	680	339	674	241	266
22	156	180	247	e182	e200	661	284	605	307	2,060	234	291
23	153	180	e210	e180	e250	608	272	535	282	2,220	449	725
24	150	182	e185	e177	e310	491	260	485	262	1,660	329	785
25	153	181	e170	e175	e300	426	259	447	248	1,180	268	822
26	159	179	e170	e174	e250	391	249	414	236	880	240	1,090
27	162	176	e165	e175	e225	372	246	382	221	706	225	2,640
28	163	171	e160	e180	e210	352	236	358	217	660	317	3,030
29	163	169	e159	e183	---	343	225	347	219	831	336	1,730
30	163	167	e157	e183	---	714	220	337	223	666	306	1,140
31	160	---	e155	e185	---	717	---	348	---	542	329	---
TOTAL	4,805	5,308	5,029	6,467	6,881	17,674	16,912	41,939	13,748	60,232	16,383	33,198
MEAN	155	177	162	209	246	570	564	1,353	458	1,943	528	1,107
MAX	168	239	247	350	444	1,300	2,100	5,700	2,430	7,930	2,030	3,830
MIN	145	153	137	174	180	190	220	223	217	192	225	266
CFSM	0.20	0.22	0.21	0.26	0.31	0.72	0.71	1.71	0.58	2.46	0.67	1.40
IN.	0.23	0.25	0.24	0.30	0.32	0.83	0.80	1.98	0.65	2.84	0.77	1.57

## STATISTICS OF MONTHLY MEAN DATA FOR WATER YEARS 1944 - 2003, BY WATER YEAR (WY)

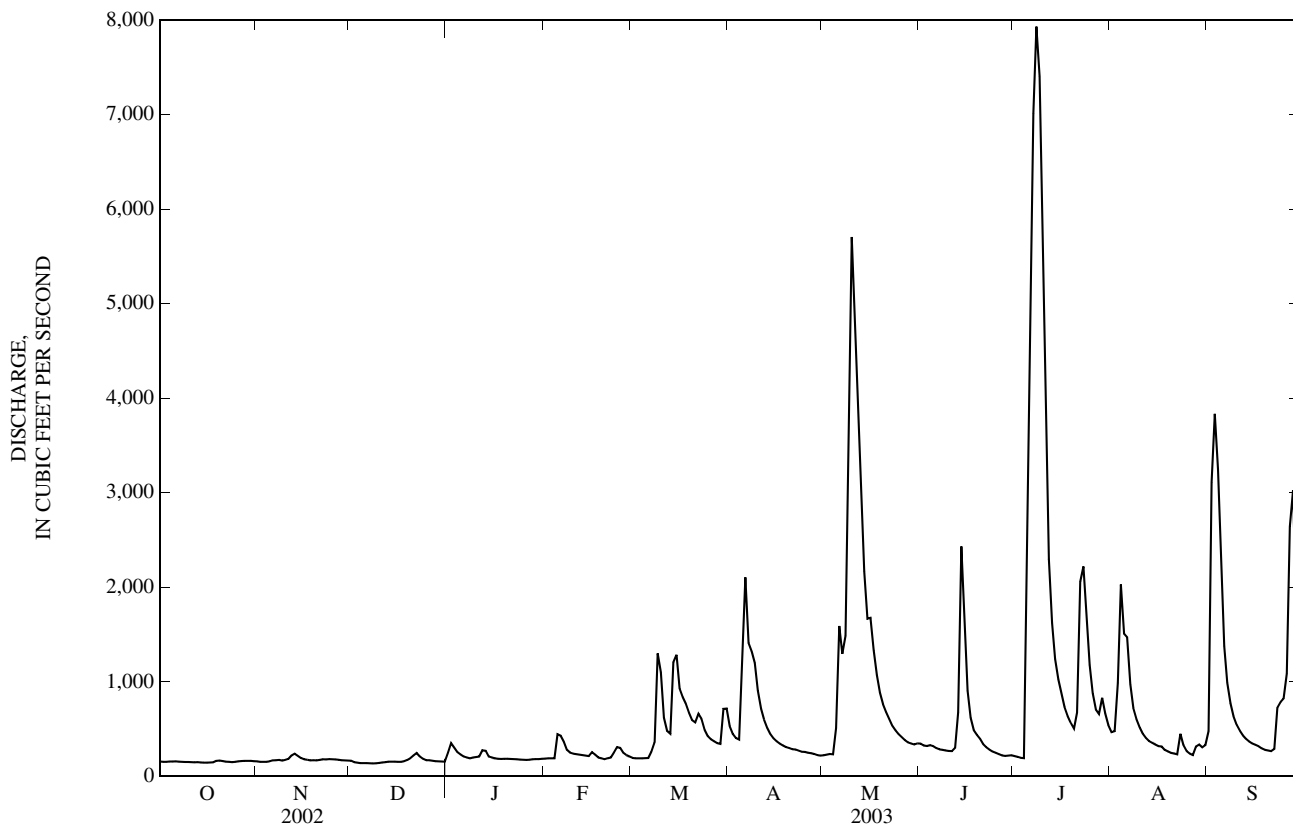
MEAN	381	515	813	943	1,125	1,342	1,304	888	785	527	368	318
MAX	2,522	2,384	2,898	4,507	3,090	4,612	3,285	1,827	2,208	2,072	2,115	1,107
(WY)	(2002)	(1993)	(1967)	(1950)	(1959)	(1982)	(1950)	(1983)	(1975)	(1998)	(1990)	(2003)
MIN	95.1	110	98.2	101	184	353	366	245	176	140	128	101
(WY)	(1964)	(1964)	(1964)	(1977)	(1964)	(1966)	(1966)	(1958)	(1988)	(1988)	(1966)	(1963)

WABASH RIVER BASIN

03328500 EEL RIVER NEAR LOGANSPORT, IN—Continued

SUMMARY STATISTICS	FOR 2002 CALENDAR YEAR		FOR 2003 WATER YEAR		WATER YEARS 1944 - 2003	
ANNUAL TOTAL	259,147		228,576		774	
ANNUAL MEAN	710		626		324	
HIGHEST ANNUAL MEAN					1,573	1950
LOWEST ANNUAL MEAN					324	1954
HIGHEST DAILY MEAN	7,060	May 13	7,930	Jul 8	16,600	Feb 24, 1985
LOWEST DAILY MEAN	137	Dec 8	137	Dec 8	70	Mar 15, 1960
ANNUAL SEVEN-DAY MINIMUM	139	Sep 11	139	Dec 4	76	Dec 17, 1963
MAXIMUM PEAK FLOW			8,150	Jul 8	17,700	Feb 24, 1985
MAXIMUM PEAK STAGE			9.22	Jul 8	12.68	Feb 24, 1985
ANNUAL RUNOFF (CFSM)	0.90		0.79		0.98	
ANNUAL RUNOFF (INCHES)	12.22		10.78		13.32	
10 PERCENT EXCEEDS	1,740		1,390		1,750	
50 PERCENT EXCEEDS	323		274		402	
90 PERCENT EXCEEDS	152		156		156	

e Estimated



## 03329000 WABASH RIVER AT LOGANSPOUT, IN

LOCATION.--Lat 40°44'47", long 86°22'39", in SW<sup>1</sup>/<sub>4</sub>NE<sup>1</sup>/<sub>4</sub> sec.35, T.27 N., R.1 E., Cass County, Hydrologic Unit 05120105, (CLYMERS, IN quadrangle), on left bank, 150 ft downstream from Cicott Street bridge in Logansport, 1,000 ft downstream from Eel River, 0.85 mi upstream of U.S. Highway 35, and at mile 353.7.

DRAINAGE AREA.--3,779 mi<sup>2</sup>.

PERIOD OF RECORD.--April to September, November and December 1903, March to November 1904, March 1905 to July 1906, May 1923 to current year. January, February, and December 1904, January and February 1905 (gage heights only). Gage-height records collected at same site December 1910 to December 1916, and since January 1926 are contained in reports of National Weather Service.

REVISED RECORDS.--WSP 783: 1934. WSP 1335: 1904, 1925(M), 1926-30, 1931(M), 1932-35, 1937-39, 1948. WSP 1385: 1903, 1905-6, 1923-25. WSP 1505: 1906(M). WSP 2109: Drainage area. WDR IN-81-1: 1979.

GAGE.--Water-stage recorder. Datum of gage is 573.28 ft above National Geodetic Vertical Datum of 1929 (levels by U.S. Army Corps of Engineers). See WSP 1705 for history of changes prior to Oct. 1, 1927.

REMARKS.--Records fair except for estimated daily discharges, which are poor. Flow partially regulated by Huntington Lake, Salamonie Lake, and Mississinewa Lake.

EXTREMES OUTSIDE PERIOD OF RECORD.--Maximum stage known, 25.3 ft March 26, 1913, from floodmarks, discharge, 140,000 ft<sup>3</sup>/s.

DISCHARGE, CUBIC FEET PER SECOND  
WATER YEAR OCTOBER 2002 TO SEPTEMBER 2003  
DAILY MEAN VALUES

DAY	OCT	NOV	DEC	JAN	FEB	MAR	APR	MAY	JUN	JUL	AUG	SEP
1	826	772	790	8,960	e800	e1,300	4,760	799	4,860	991	5,970	6,640
2	803	761	587	10,200	e780	e1,250	3,010	835	2,360	926	6,140	14,100
3	798	781	552	9,390	e760	e1,200	2,420	1,990	2,130	955	8,900	14,000
4	830	788	e470	7,860	e1,200	e960	2,220	2,520	1,790	1,360	9,870	13,400
5	995	766	e500	5,380	e3,500	e1,000	7,280	6,270	1,560	20,400	8,570	13,000
6	940	761	e450	3,270	e4,600	e1,100	9,700	12,600	1,540	16,600	6,810	11,900
7	927	798	e430	2,090	e4,000	2,540	9,300	11,500	1,570	33,000	8,000	11,200
8	927	859	e440	1,790	e3,100	4,970	8,210	13,300	1,430	30,700	7,990	10,500
9	926	855	e395	1,550	e2,200	7,800	6,900	20,100	1,250	29,400	7,390	8,690
10	924	900	e410	2,580	e1,300	11,000	5,830	20,100	1,260	25,800	6,230	6,690
11	895	1,200	e430	5,740	e1,140	10,900	4,050	17,000	1,250	22,800	5,960	5,380
12	876	3,630	446	4,130	e1,100	8,490	3,100	17,800	1,370	23,600	6,040	5,770
13	859	3,690	424	2,410	e1,000	9,320	2,220	16,600	3,300	21,500	6,060	5,650
14	837	3,090	421	1,600	e760	14,400	1,880	15,500	11,000	20,300	6,140	5,060
15	833	2,310	420	1,140	e850	14,900	1,660	16,100	8,210	17,200	6,120	2,380
16	846	1,900	406	1,070	e950	14,900	1,470	15,100	7,260	15,800	5,830	1,430
17	850	1,290	404	e1,260	e900	14,600	1,380	14,500	6,800	15,900	5,680	1,370
18	856	943	449	e1,170	e820	12,300	1,430	13,700	6,360	15,700	5,570	1,310
19	896	982	518	e1,070	e750	9,170	1,370	11,900	4,490	15,600	5,010	1,300
20	841	974	1,630	e1,000	e700	7,230	1,330	10,100	3,340	15,400	4,060	1,150
21	774	936	6,930	e940	e720	6,800	1,300	9,520	3,050	16,600	3,490	1,110
22	743	908	6,200	e880	e750	8,030	1,180	7,000	2,310	14,900	4,060	1,240
23	778	976	3,830	e820	e900	8,690	1,110	6,590	1,690	14,600	3,840	2,850
24	783	1,040	2,280	e780	e1,300	5,990	1,030	6,180	1,340	12,500	3,310	5,140
25	802	1,180	1,690	e740	e2,400	4,270	1,000	6,040	1,090	11,600	2,960	7,970
26	825	1,220	1,190	e720	e3,000	3,260	962	6,120	1,050	11,300	2,900	9,890
27	814	1,130	945	e700	e2,600	2,310	874	5,770	984	11,400	2,650	17,000
28	840	1,060	929	e720	e1,800	2,430	799	5,760	947	10,700	2,760	14,800
29	776	1,020	917	e740	---	3,740	775	5,670	944	7,700	3,530	11,500
30	816	949	948	e780	---	9,940	775	5,820	985	6,670	3,650	10,700
31	791	---	1,350	e820	---	8,520	---	5,830	---	6,370	3,050	---
TOTAL	26,227	38,469	37,781	82,300	44,680	213,310	89,325	308,614	87,520	468,272	168,540	223,120
MEAN	846	1,282	1,219	2,655	1,596	6,881	2,978	9,955	2,917	15,110	5,437	7,437
MAX	995	3,690	6,930	10,200	4,600	14,900	9,700	20,100	11,000	33,000	9,870	17,000
MIN	743	761	395	700	700	960	775	799	944	926	2,650	1,110
CFSM	0.22	0.34	0.32	0.70	0.42	1.82	0.79	2.63	0.77	4.00	1.44	1.97
IN.	0.26	0.38	0.37	0.81	0.44	2.10	0.88	3.04	0.86	4.61	1.66	2.20

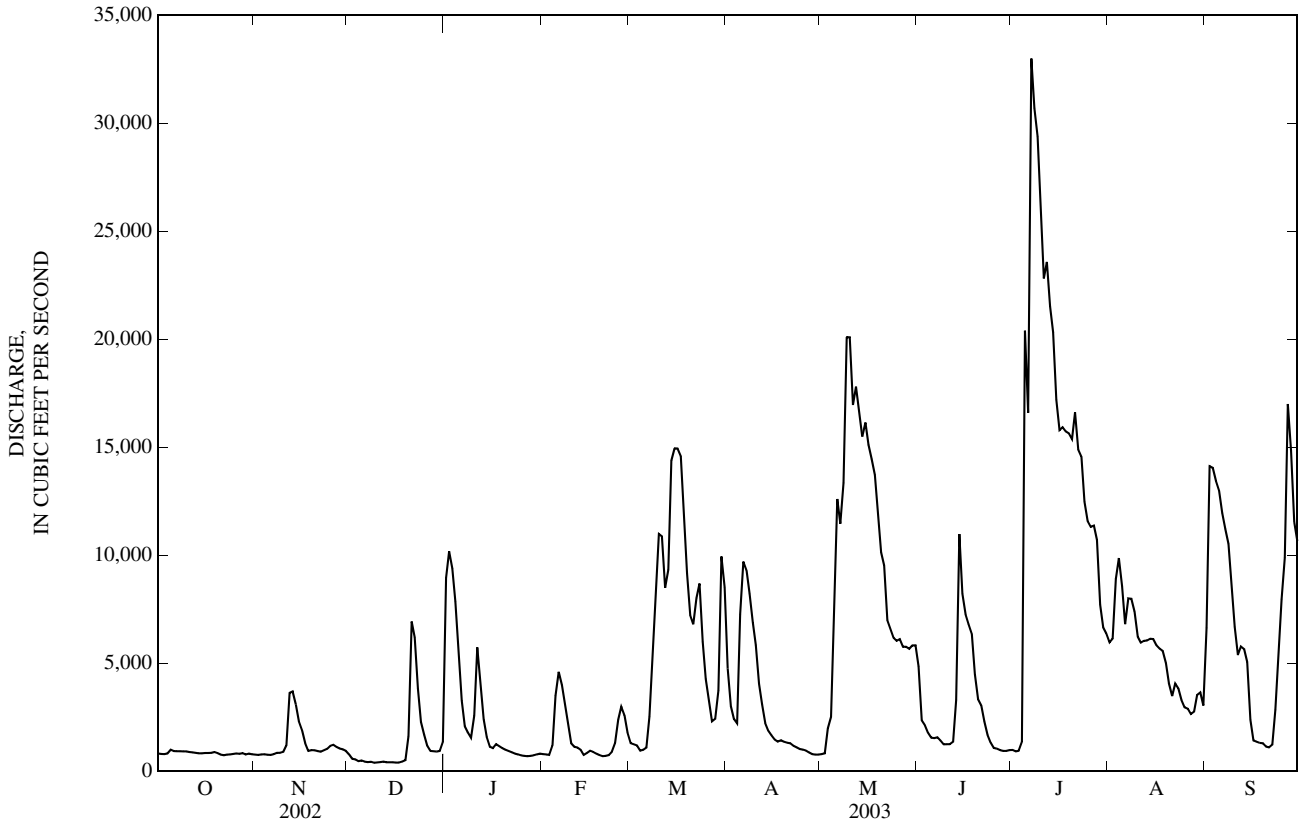
## STATISTICS OF MONTHLY MEAN DATA FOR WATER YEARS 1924 - 2003, BY WATER YEAR (WY)

MEAN	1,505	2,212	3,660	4,583	5,203	6,422	5,844	3,912	3,246	2,220	1,381	1,300
MAX	9,526	10,940	12,340	25,590	15,880	18,180	17,520	21,310	16,440	15,110	9,044	10,710
(WY)	(2002)	(1973)	(1968)	(1950)	(1959)	(1982)	(1957)	(1943)	(1958)	(2003)	(1998)	(1926)
MIN	197	296	252	290	417	638	929	600	388	269	203	176
(WY)	(1964)	(1964)	(1964)	(1945)	(1964)	(1941)	(1971)	(1941)	(1988)	(1936)	(1941)	(1941)

03329000 WABASH RIVER AT LOGANSPORT, IN—Continued

SUMMARY STATISTICS	FOR 2002 CALENDAR YEAR		FOR 2003 WATER YEAR		WATER YEARS 1924 - 2003	
ANNUAL TOTAL	1,212,461		1,788,158			
ANNUAL MEAN	3,322		4,899		3,448	
HIGHEST ANNUAL MEAN					6,614 1950	
LOWEST ANNUAL MEAN					796 1941	
HIGHEST DAILY MEAN	23,300	Feb 1	33,000	Jul 7	84,700	May 19, 1943
LOWEST DAILY MEAN	302	Sep 15	395	Dec 9	135	Sep 26, 1941
ANNUAL SEVEN-DAY MINIMUM	316	Sep 11	421	Dec 9	142	Sep 24, 1941
MAXIMUM PEAK FLOW			37,100 Jul 7		89,800 May 18, 1943	
MAXIMUM PEAK STAGE			13.60 Jul 7		21.32 May 18, 1943	
ANNUAL RUNOFF (CFSM)	0.88		1.30		0.91	
ANNUAL RUNOFF (INCHES)	11.94		17.60		12.40	
10 PERCENT EXCEEDS	10,500		13,800		9,370	
50 PERCENT EXCEEDS	1,210		2,220		1,470	
90 PERCENT EXCEEDS	449		775		426	

e Estimated



03329700 DEER CREEK NEAR DELPHI, IN

LOCATION.--Lat 40°35'25", long 86°37'17", in NE<sup>1</sup>/<sub>4</sub>NE<sup>1</sup>/<sub>4</sub> sec.27, T.25 N., R.2 W., Carroll County, Hydrologic Unit 05120105, (FLORA, IN quadrangle), on downstream side of left wingwall of county road bridge,0.85 mi south of Sharp Point Cemetery, 3.0 mi northeast of Delphi Post Office, and 4.5 mi upstream from mouth.

DRAINAGE AREA.--274 mi<sup>2</sup>.

PERIOD OF RECORD.--October 1943 to current year. Prior to March 1944 monthly discharge only, published in WSP 1305.

REVISED RECORDS.--WSP 1275: 1944, 1947-48. WSP 2109: Drainage area.

GAGE.--Water-stage recorder. Datum of gage is 553.81 ft above National Geodetic Vertical Datum of 1929, (U.S. Army Corps of Engineers bench mark, levels by State of Indiana, Department of Natural Resources).

REMARKS.--Records good except for estimated daily discharges, which are poor.

EXTREMES OUTSIDE PERIOD OF RECORD.--Flood in May 1943 reached a stage of 19.8 ft, from floodmarks, discharge, 18,000 ft<sup>3</sup>/s from rating curve extended above 8,000 ft<sup>3</sup>/s.

DISCHARGE, CUBIC FEET PER SECOND  
WATER YEAR OCTOBER 2002 TO SEPTEMBER 2003  
DAILY MEAN VALUES

DAY	OCT	NOV	DEC	JAN	FEB	MAR	APR	MAY	JUN	JUL	AUG	SEP
1	26	35	38	129	e34	e57	96	66	97	61	139	687
2	24	34	37	155	e40	e56	91	67	87	56	162	1,500
3	23	34	38	107	e55	e56	85	64	88	54	193	802
4	25	37	e36	81	e125	e54	97	60	89	51	156	441
5	26	39	e35	e74	e118	97	208	1,190	85	10,100	135	272
6	25	43	e35	e60	e105	132	339	1,130	77	13,400	124	198
7	25	40	e34	e50	e87	114	239	611	74	7,780	114	162
8	25	40	e34	e46	e72	186	261	468	70	5,360	108	137
9	25	38	e33	e49	e68	644	239	1,320	69	6,410	103	124
10	25	49	e33	126	e64	365	198	1,620	67	6,780	97	114
11	25	92	e33	132	e61	247	173	1,360	70	3,470	93	104
12	25	130	33	e104	e59	186	154	1,050	106	1,880	89	97
13	26	83	33	e83	e56	189	132	594	289	1,260	85	93
14	25	62	33	e67	e53	300	114	414	1,020	848	82	90
15	26	53	33	e58	e51	228	106	456	865	1,230	98	87
16	26	47	33	e53	e49	225	101	468	477	1,150	91	83
17	26	43	33	e49	e48	239	100	332	309	651	120	79
18	26	40	e34	e47	e47	221	95	261	228	495	153	75
19	32	39	e35	e46	e46	189	88	218	185	409	100	73
20	29	39	e37	e45	e46	179	85	196	153	335	85	72
21	29	39	e44	e44	e47	204	84	185	130	741	78	70
22	29	42	e52	e44	e77	200	83	165	115	1,150	73	83
23	29	41	e45	e44	203	172	77	152	104	572	69	127
24	29	38	e41	e42	e124	142	71	140	94	380	65	182
25	32	39	e39	e42	e84	128	73	130	84	281	62	450
26	35	38	e36	e41	e72	116	76	120	79	230	61	626
27	33	38	e34	e40	e65	101	71	111	77	206	58	2,940
28	33	38	e34	e40	e59	96	68	104	71	197	55	2,190
29	38	38	35	e38	---	103	69	105	69	181	67	1,100
30	39	37	38	e38	---	106	65	103	65	165	83	635
31	36	---	49	e36	---	105	---	103	---	151	88	---
TOTAL	877	1,405	1,137	2,010	2,015	5,437	3,738	13,363	5,393	66,034	3,086	13,693
MEAN	28.3	46.8	36.7	64.8	72.0	175	125	431	180	2,130	99.5	456
MAX	39	130	52	155	203	644	339	1,620	1,020	13,400	193	2,940
MIN	23	34	33	36	34	54	65	60	65	51	55	70
CFSM	0.10	0.17	0.13	0.24	0.26	0.64	0.45	1.57	0.66	7.77	0.36	1.67
IN.	0.12	0.19	0.15	0.27	0.27	0.74	0.51	1.81	0.73	8.97	0.42	1.86

STATISTICS OF MONTHLY MEAN DATA FOR WATER YEARS 1944 - 2003, BY WATER YEAR (WY)

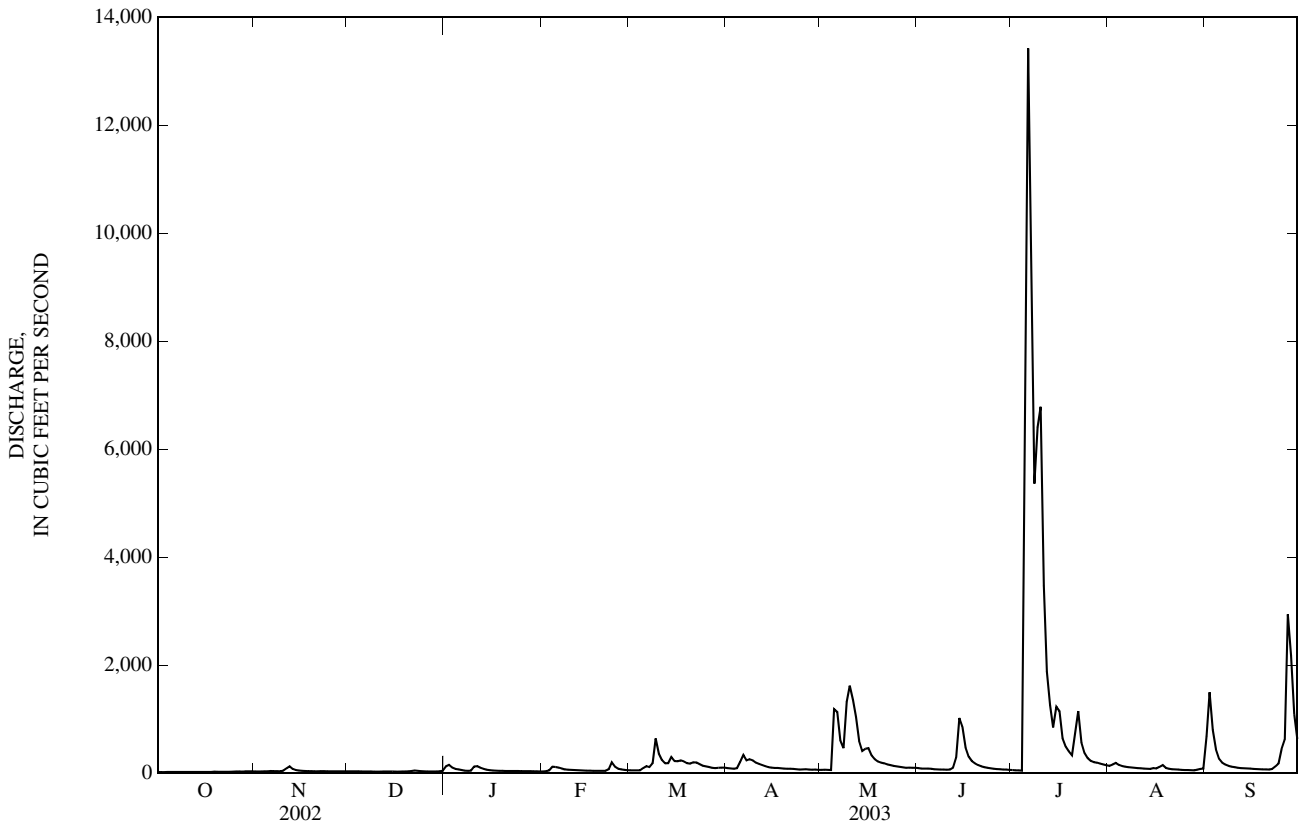
MEAN	101	158	243	307	366	435	417	303	275	213	98.3	84.8
MAX	673	1,249	983	1,882	1,039	1,311	1,109	793	1,799	2,130	537	568
(WY)	(2002)	(1993)	(1991)	(1950)	(1959)	(1982)	(1959)	(1983)	(1958)	(2003)	(1958)	(1989)
MIN	15.0	22.7	22.2	17.6	36.1	46.8	44.3	62.2	30.7	22.5	12.5	10.5
(WY)	(1965)	(1954)	(1945)	(1977)	(1954)	(1954)	(2000)	(1976)	(1977)	(1944)	(1966)	(1954)

WABASH RIVER BASIN

03329700 DEER CREEK NEAR DELPHI, IN—Continued

SUMMARY STATISTICS	FOR 2002 CALENDAR YEAR		FOR 2003 WATER YEAR		WATER YEARS 1944 - 2003	
ANNUAL TOTAL	87,252		118,188			
ANNUAL MEAN	239		324		249	
HIGHEST ANNUAL MEAN					510	1950
LOWEST ANNUAL MEAN					62.7	1966
HIGHEST DAILY MEAN	2,620	Feb 1	13,400	Jul 6	13,400	Jul 6, 2003
LOWEST DAILY MEAN	22	Sep 13	23	Oct 3	6.2	Sep 25, 1954
ANNUAL SEVEN-DAY MINIMUM	23	Sep 13	25	Oct 2	6.3	Sep 22, 1954
MAXIMUM PEAK FLOW			18,700	Jul 5	18,700	Jul 5, 2003
MAXIMUM PEAK STAGE			18.64	Jul 5	18.64	Jul 5, 2003
ANNUAL RUNOFF (CFSM)	0.87		1.18		0.91	
ANNUAL RUNOFF (INCHES)	11.85		16.05		12.36	
10 PERCENT EXCEEDS	589		484		556	
50 PERCENT EXCEEDS	92		83		104	
90 PERCENT EXCEEDS	29		34		27	

e Estimated



03330241 TIPPECANOE RIVER AT NORTH WEBSTER, IN

LOCATION.--Lat 41°18'58", long 85°41'32", in SE¼NE¼ sec.15, T.33 N., R.7 E., Kosciusko County, Hydrologic Unit 05120106, (NORTH WEBSTER, IN. quadrangle), on right upstream corner of State Road 13 bridge, at the intersection of State Road 13 and County Road 550 North, 0.4 mi southeast of North Webster. and 0.5 mi north of intersection of State Road 13 and 500 North.

DRAINAGE AREA.--49.3 mi<sup>2</sup>.

PERIOD OF RECORD.--May 1986 to current year.

GAGE.--Water-stage recorder. Datum of gage is 840.00 ft above National Geodetic Vertical Datum of 1929.

REMARKS.--Records fair except estimated daily discharges, which are poor. Flow regulated by dams at Webster Lake, 0.25 mi upstream.

DISCHARGE, CUBIC FEET PER SECOND  
WATER YEAR OCTOBER 2002 TO SEPTEMBER 2003  
DAILY MEAN VALUES

DAY	OCT	NOV	DEC	JAN	FEB	MAR	APR	MAY	JUN	JUL	AUG	SEP
1	5.8	27	48	44	15	13	31	20	19	4.8	38	111
2	9.3	29	48	44	13	14	31	24	17	7.4	59	143
3	9.9	31	48	43	12	14	32	32	19	7.1	58	170
4	10	32	47	43	12	13	58	27	20	12	56	224
5	10	33	47	42	10	15	117	29	19	66	51	281
6	8.0	38	46	41	9.3	16	29	35	19	59	28	270
7	8.0	37	42	41	7.5	16	37	45	19	65	47	252
8	9.2	39	32	33	6.8	18	53	51	19	268	80	237
9	9.4	40	32	22	4.6	20	53	118	19	231	84	187
10	10	36	32	21	5.4	22	53	218	18	121	40	133
11	3.8	32	33	20	7.9	22	54	210	11	82	22	138
12	2.2	28	33	20	7.6	25	53	184	3.3	50	8.3	90
13	2.5	25	34	20	7.9	33	51	143	5.5	53	25	44
14	2.2	22	37	20	9.8	33	50	142	9.6	61	34	6.0
15	3.6	22	37	19	e10	35	35	143	11	69	33	17
16	11	21	37	19	e9.6	50	22	137	13	65	26	23
17	12	21	38	19	e9.4	81	22	132	14	49	4.8	25
18	12	21	39	19	e9.2	103	21	117	17	23	4.9	26
19	15	19	41	19	e9.0	100	20	47	22	15	6.2	27
20	15	1.8	36	20	10	97	20	47	20	8.3	7.2	30
21	15	e1.6	41	20	11	94	21	47	19	88	8.8	34
22	17	e1.4	49	20	12	75	20	46	18	188	45	52
23	19	e1.1	48	20	11	41	19	34	16	153	60	70
24	20	e1.2	47	20	12	41	19	9.1	13	108	56	22
25	19	e2.6	47	19	12	33	19	9.8	2.8	68	43	24
26	19	13	46	19	12	27	18	11	3.4	47	5.6	28
27	19	22	50	19	13	27	17	15	3.3	103	10	84
28	23	29	59	19	13	27	18	19	3.7	165	12	109
29	30	36	57	17	---	27	17	19	3.4	98	136	105
30	28	43	55	16	---	26	18	17	3.8	42	204	100
31	25	---	50	16	---	29	---	21	---	9.2	96	---
TOTAL	402.9	705.7	1,336	774	282.0	1,187	1,028	2,148.9	400.8	2,385.8	1,388.8	3,062.0
MEAN	13.0	23.5	43.1	25.0	10.1	38.3	34.3	69.3	13.4	77.0	44.8	102
MAX	30	43	59	44	15	103	117	218	22	268	204	281
MIN	2.2	1.1	32	16	4.6	13	17	9.1	2.8	4.8	4.8	6.0
CFSM	0.26	0.48	0.87	0.51	0.20	0.78	0.70	1.41	0.27	1.56	0.91	2.07
IN.	0.30	0.53	1.01	0.58	0.21	0.90	0.78	1.62	0.30	1.80	1.05	2.31

STATISTICS OF MONTHLY MEAN DATA FOR WATER YEARS 1987 - 2003, BY WATER YEAR (WY)

	1987	1988	1989	1990	1991	1992	1993	1994	1995	1996	1997	1998	1999	2000	2001	2002	2003
MEAN	37.7	40.2	49.6	68.4	60.8	64.1	80.1	53.8	47.5	27.0	25.0	21.8					
MAX	147	133	102	209	153	137	139	119	138	77.0	80.1	102					
(WY)	(2002)	(1993)	(2002)	(1993)	(2001)	(1997)	(2002)	(2002)	(1996)	(2003)	(1990)	(2003)					
MIN	2.68	6.61	12.3	13.6	6.05	15.0	29.6	15.4	3.08	4.36	2.00	1.67					
(WY)	(1995)	(1995)	(1996)	(2000)	(2000)	(2000)	(2000)	(1988)	(1988)	(1988)	(1988)	(1999)					

SUMMARY STATISTICS

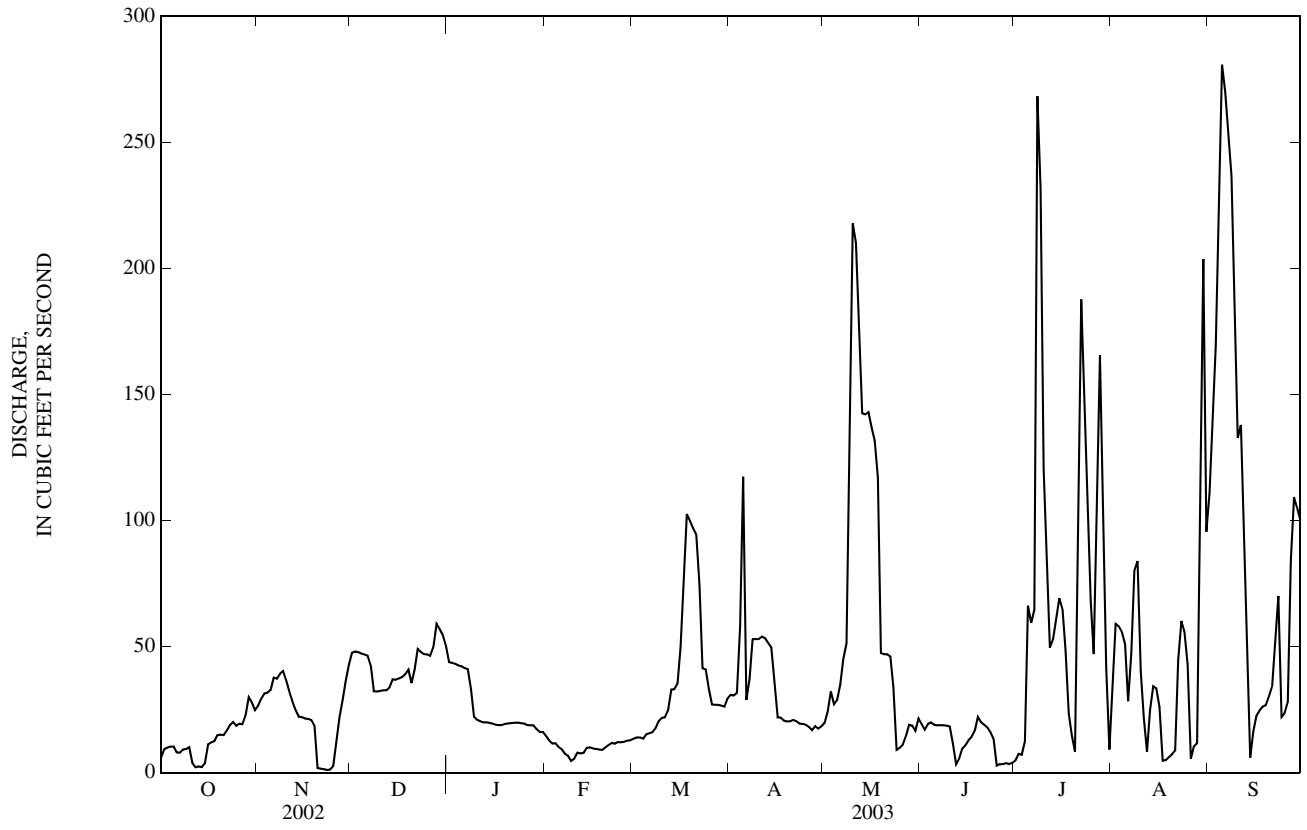
FOR 2002 CALENDAR YEAR

FOR 2003 WATER YEAR

WATER YEARS 1987 - 2003

ANNUAL TOTAL	17,191.9	15,101.9	
ANNUAL MEAN	47.1	41.4	47.9
HIGHEST ANNUAL MEAN			70.5
LOWEST ANNUAL MEAN			23.0
HIGHEST DAILY MEAN	326	May 15	281
LOWEST DAILY MEAN	1.1	Nov 23	1.1
ANNUAL SEVEN-DAY MINIMUM	2.2	Sep 9	3.2
MAXIMUM PEAK FLOW			286
MAXIMUM PEAK STAGE			5.62
ANNUAL RUNOFF (CFSM)	0.96		0.84
ANNUAL RUNOFF (INCHES)	12.97		11.40
10 PERCENT EXCEEDS	134		100
50 PERCENT EXCEEDS	28		25
90 PERCENT EXCEEDS	4.2		8.0
			5.4

e Estimated





03330500 TIPPECANOE RIVER AT OSWEGO, IN

LOCATION.--Lat 41°19'14", long 85°47'21", in NE¼NE¼ sec.14, T.33 N., R.6 E., Kosciusko County, Hydrologic Unit 05120106, (LEESBURG, IN. quadrangle), on left bank 50 ft downstream from dam at Tippecanoe Lake Outlet in Oswego, 3 mi east of Leesburg, and at mile 158.9.

DRAINAGE AREA.--113 mi<sup>2</sup>.

PERIOD OF RECORD.--October 1949 to current year.

REVISED RECORDS.--WSP 2109: Drainage area.

GAGE.--Water-stage recorder. Datum of gage is 830.00 ft above National Geodetic Vertical Datum of 1929. Prior to Aug. 12, 1953, nonrecording gage at same site and datum.

REMARKS.--Records fair. Regulation by gates at lake outlet.

DISCHARGE, CUBIC FEET PER SECOND  
WATER YEAR OCTOBER 2002 TO SEPTEMBER 2003  
DAILY MEAN VALUES

DAY	OCT	NOV	DEC	JAN	FEB	MAR	APR	MAY	JUN	JUL	AUG	SEP
1	13	13	40	45	31	30	50	115	58	15	148	225
2	14	35	39	45	30	30	52	128	57	14	112	247
3	15	48	39	45	31	29	52	62	58	13	114	259
4	15	45	39	45	33	28	58	18	55	17	115	276
5	17	44	39	45	33	30	116	103	53	98	116	302
6	16	42	39	45	33	30	192	138	54	144	113	325
7	15	41	36	45	32	30	193	134	25	150	80	339
8	14	40	34	45	32	26	184	132	16	212	69	345
9	13	40	35	43	32	20	168	193	21	255	93	343
10	13	40	34	41	32	20	146	243	37	259	124	327
11	12	39	34	41	32	21	119	269	60	252	119	309
12	12	39	34	41	32	22	104	311	57	239	97	289
13	12	38	34	41	32	25	105	330	55	226	62	261
14	11	37	33	40	32	28	106	342	55	216	62	231
15	10	38	32	40	32	29	104	354	53	206	61	201
16	10	37	33	40	32	32	100	353	52	182	38	177
17	9.5	48	32	40	32	37	87	350	22	132	18	114
18	9.4	55	33	40	32	46	50	340	12	112	18	53
19	11	53	36	40	31	133	36	322	13	65	17	36
20	11	50	37	40	28	186	29	299	14	20	17	36
21	11	48	36	40	28	191	53	279	16	95	18	36
22	11	47	36	40	29	188	51	256	17	210	24	38
23	11	61	36	39	30	176	51	236	18	227	55	41
24	11	64	37	39	30	160	51	213	19	229	67	42
25	11	56	40	39	30	142	51	174	18	225	67	42
26	11	51	40	32	30	98	50	86	16	211	65	41
27	12	47	40	30	30	44	29	58	15	206	64	78
28	13	44	40	30	30	36	15	58	15	221	60	109
29	14	40	42	30	---	46	20	57	15	221	91	115
30	13	40	43	30	---	50	45	58	15	211	186	129
31	13	---	44	31	---	50	---	58	---	189	201	---
TOTAL	383.9	1,320	1,146	1,227	871	2,013	2,467	6,069	991	5,072	2,491	5,366
MEAN	12.4	44.0	37.0	39.6	31.1	64.9	82.2	196	33.0	164	80.4	179
MAX	17	64	44	45	33	191	193	354	60	259	201	345
MIN	9.4	13	32	30	28	20	15	18	12	13	17	36
CFSM	0.11	0.39	0.33	0.35	0.28	0.57	0.73	1.73	0.29	1.45	0.71	1.58
IN.	0.13	0.43	0.38	0.40	0.29	0.66	0.81	2.00	0.33	1.67	0.82	1.77

STATISTICS OF MONTHLY MEAN DATA FOR WATER YEARS 1950 - 2003, BY WATER YEAR (WY)

MEAN	61.0	76.3	109	128	142	181	193	134	102	65.8	47.3	46.3
MAX	369	230	298	443	373	498	493	340	363	198	188	237
(WY)	(1955)	(1993)	(1967)	(1950)	(1950)	(1982)	(1950)	(1956)	(1981)	(1968)	(1990)	(1958)
MIN	4.73	7.25	16.0	7.51	11.0	44.0	58.6	30.8	18.6	11.4	1.13	0.40
(WY)	(1954)	(1954)	(1963)	(1963)	(1963)	(1964)	(1966)	(1958)	(1988)	(1988)	(1967)	(1967)

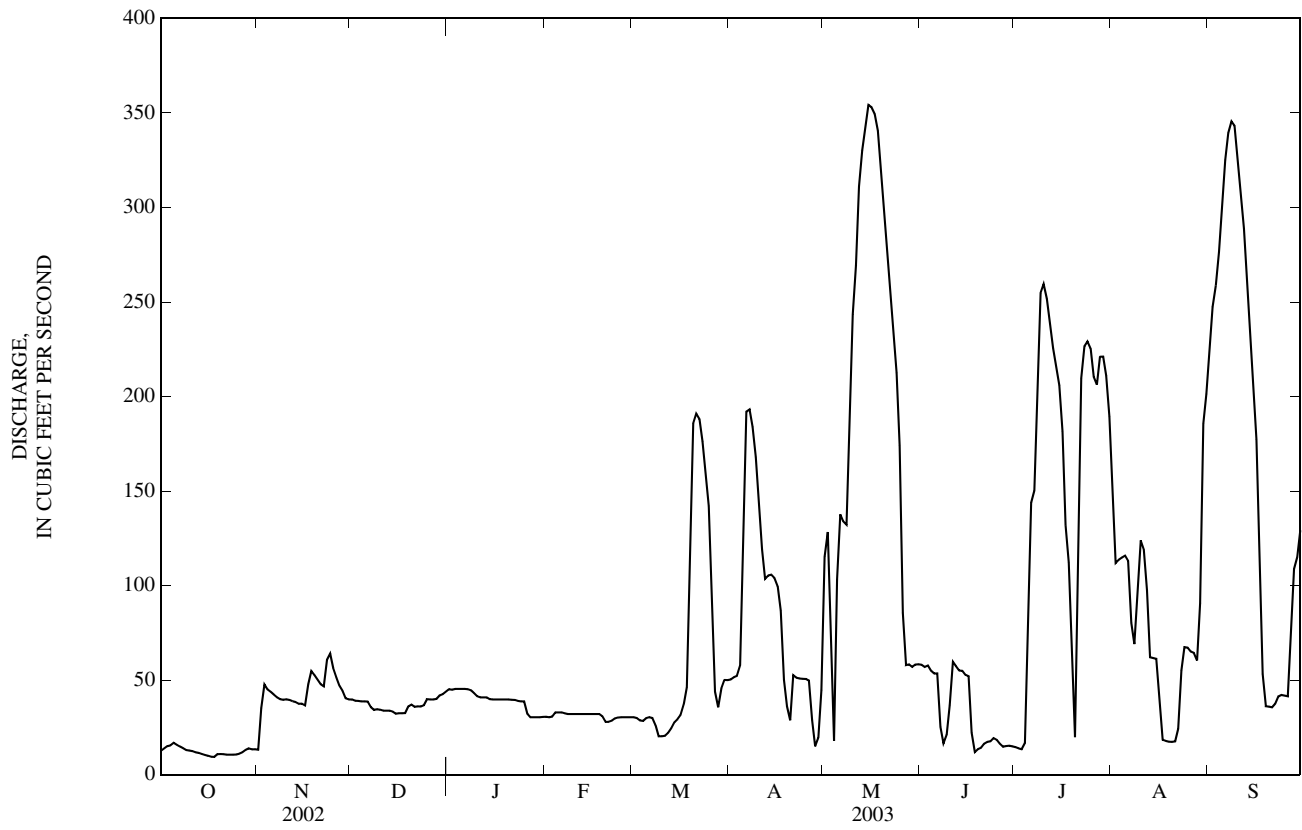
SUMMARY STATISTICS

FOR 2002 CALENDAR YEAR

FOR 2003 WATER YEAR

WATER YEARS 1950 - 2003

ANNUAL TOTAL	40,811.1	29,416.9	
ANNUAL MEAN	112	80.6	107
HIGHEST ANNUAL MEAN			196
LOWEST ANNUAL MEAN			30.8
HIGHEST DAILY MEAN	445	354	944
LOWEST DAILY MEAN	8.7	9.4	0.08
ANNUAL SEVEN-DAY MINIMUM	9.2	10	0.28
MAXIMUM PEAK FLOW		356	950
MAXIMUM PEAK STAGE		7.43	9.25
ANNUAL RUNOFF (CFSM)	0.99	0.71	0.95
ANNUAL RUNOFF (INCHES)	13.44	9.68	12.86
10 PERCENT EXCEEDS	300	223	243
50 PERCENT EXCEEDS	48	41	76
90 PERCENT EXCEEDS	12	15	15



03331110 WALNUT CREEK NEAR WARSAW, IN

LOCATION.--Lat 41°12'17", long 85°52'11", in NW¼NE¼ sec.30, T.32 N., R.6 E., Kosciusko County, Hydrologic Unit 05120106, (WARSAW, IN quadrangle), on left bank 10 ft upstream from bridge on County Road 200 South, 0.3 mi downstream from small right-bank tributary, 1.1 mi west of intersection of County Road 200 South and Country Farm Road, and 2.5 mi south of court house in Warsaw.

DRAINAGE AREA.--19.6 mi<sup>2</sup>.

PERIOD OF RECORD.--October 1969 to October 2003 (discontinued).

GAGE.--Water-stage recorder. Datum of gage is 823.00 ft above National Geodetic Vertical Datum of 1929.

REMARKS.--Records fair except for estimated daily discharges, which are poor. Flow occasionally regulated by lakes upstream.

DISCHARGE, CUBIC FEET PER SECOND  
WATER YEAR OCTOBER 2002 TO SEPTEMBER 2003  
DAILY MEAN VALUES

DAY	OCT	NOV	DEC	JAN	FEB	MAR	APR	MAY	JUN	JUL	AUG	SEP
1	1.1	1.7	e2.4	e4.0	e4.0	e2.0	9.4	3.8	4.9	3.1	7.0	21
2	1.2	1.6	e2.2	e3.9	e5.0	e3.0	9.9	5.5	3.4	2.8	7.6	48
3	1.2	1.8	e2.0	e3.9	e6.0	e2.4	8.3	6.3	5.1	2.9	9.6	59
4	1.4	1.7	e2.0	e3.8	e7.0	e2.0	10	6.0	4.1	3.6	13	48
5	1.5	1.9	e2.4	e3.7	e4.0	e3.5	28	14	3.7	5.9	12	34
6	1.4	2.1	e2.2	e3.5	e3.0	5.3	26	25	3.5	7.8	11	22
7	1.2	2.1	e2.2	e3.4	e3.0	6.2	23	15	4.7	16	9.0	15
8	1.2	2.1	e2.4	3.8	e2.8	7.6	23	16	4.7	23	7.6	10
9	1.1	2.2	e2.0	3.8	e3.0	20	20	49	4.0	23	6.4	8.0
10	1.1	2.4	e2.0	4.2	e3.0	e14	16	88	3.8	27	4.8	5.7
11	1.0	2.6	e2.2	e3.4	e2.2	e9.0	13	99	3.7	19	3.6	4.6
12	1.0	2.7	3.7	e3.2	e2.0	9.3	11	85	5.4	16	3.3	3.8
13	1.1	2.8	2.6	e3.0	e1.8	15	10	61	5.7	12	3.5	3.2
14	1.1	2.8	2.8	e3.0	e2.0	19	7.9	43	6.2	9.4	3.4	3.2
15	1.1	3.2	2.7	e2.6	e2.2	15	6.9	37	6.2	6.8	3.3	3.8
16	1.1	3.0	2.7	e2.6	e2.2	12	6.7	32	5.2	4.8	3.7	3.8
17	1.2	2.8	4.0	e2.6	e2.2	13	7.3	26	4.3	3.8	3.8	3.4
18	1.4	2.6	2.9	e2.4	e2.4	13	7.2	22	4.1	3.9	3.2	2.9
19	1.6	2.6	3.5	e2.2	e2.5	13	6.9	19	3.9	4.2	2.8	2.6
20	1.4	2.5	4.0	e2.0	e2.6	15	11	17	3.1	3.8	2.5	2.9
21	1.3	2.8	5.0	e2.4	e2.8	17	26	15	2.9	25	2.7	3.7
22	1.3	3.0	4.2	e2.2	e3.0	16	12	13	2.7	24	3.0	3.5
23	1.2	2.9	e4.1	e2.0	e4.0	14	8.7	11	2.3	20	2.9	4.9
24	1.2	3.5	e4.0	e1.8	e4.0	11	6.3	8.6	2.4	16	2.7	5.2
25	1.4	3.4	e3.9	e1.8	e3.0	10	4.6	7.2	2.5	13	2.5	8.1
26	1.4	3.0	e3.8	e2.2	e2.2	8.7	3.3	5.1	2.7	9.9	2.8	8.5
27	1.3	e2.4	e3.7	e1.6	e2.2	7.7	3.1	4.3	2.7	9.2	2.7	16
28	1.2	e2.2	3.6	e1.4	e2.0	8.0	3.5	4.3	2.4	11	2.6	19
29	1.5	2.8	3.1	e2.6	---	11	3.3	5.2	2.4	11	4.1	16
30	1.8	3.0	3.3	e2.2	---	11	3.7	16	2.7	9.5	3.7	12
31	1.8	---	e3.8	e2.0	---	11	---	8.3	---	8.1	4.2	---
TOTAL	39.8	76.2	95.4	87.2	86.1	324.7	336.0	767.6	115.4	355.5	155.0	401.8
MEAN	1.28	2.54	3.08	2.81	3.08	10.5	11.2	24.8	3.85	11.5	5.00	13.4
MAX	1.8	3.5	5.0	4.2	7.0	20	28	99	6.2	27	13	59
MIN	1.0	1.6	2.0	1.4	1.8	2.0	3.1	3.8	2.3	2.8	2.5	2.6
CFSM	0.07	0.13	0.16	0.14	0.16	0.53	0.57	1.26	0.20	0.59	0.26	0.68
IN.	0.08	0.14	0.18	0.17	0.16	0.62	0.64	1.46	0.22	0.67	0.29	0.76

STATISTICS OF MONTHLY MEAN DATA FOR WATER YEARS 1970 - 2003, BY WATER YEAR (WY)

MEAN	8.52	13.9	19.4	18.8	23.8	32.5	33.9	21.7	18.9	10.4	6.67	6.76
MAX	54.6	44.9	48.3	77.7	60.6	110	66.5	60.8	80.3	49.3	53.7	27.0
(WY)	(1991)	(1993)	(1991)	(1993)	(1985)	(1982)	(1981)	(1981)	(1981)	(1997)	(1990)	(1980)
MIN	1.04	2.18	1.43	0.91	2.87	7.99	11.2	6.35	2.34	1.73	1.07	0.80
(WY)	(1977)	(1979)	(1977)	(1977)	(1979)	(2000)	(2003)	(1988)	(1988)	(1988)	(1971)	(1976)

SUMMARY STATISTICS

FOR 2002 CALENDAR YEAR

FOR 2003 WATER YEAR

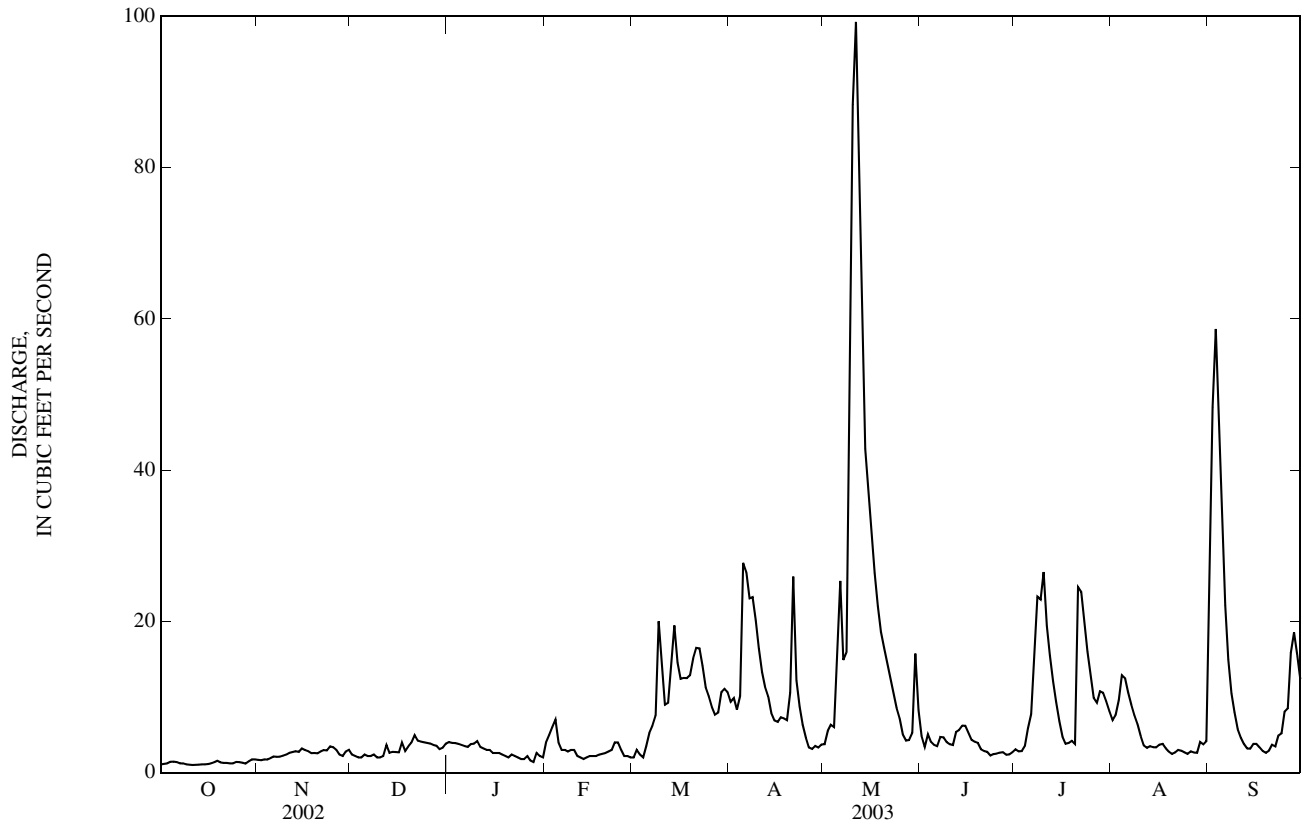
WATER YEARS 1970 - 2003

ANNUAL TOTAL	5,715.23	2,840.7	
ANNUAL MEAN	15.7	7.78	17.9
HIGHEST ANNUAL MEAN			31.9
LOWEST ANNUAL MEAN			7.78
HIGHEST DAILY MEAN	120	May 12	389
LOWEST DAILY MEAN	0.91	Sep 14	0.40
ANNUAL SEVEN-DAY MINIMUM	0.99	Sep 11	0.46
MAXIMUM PEAK FLOW			561
MAXIMUM PEAK STAGE			5.38
ANNUAL RUNOFF (CFSM)	0.80		0.91
ANNUAL RUNOFF (INCHES)	10.85		12.39
10 PERCENT EXCEEDS	41		42
50 PERCENT EXCEEDS	8.1		10
90 PERCENT EXCEEDS	1.3		1.9

e Estimated

WABASH RIVER BASIN

03331110 WALNUT CREEK NEAR WARSAW, IN—Continued



## 03331500 TIPPECANOE RIVER NEAR ORA, IN

LOCATION.--Lat 41°09'26", long 86°33'49", in SE $\frac{1}{4}$ SE $\frac{1}{4}$  sec.6, T.31 N., R.1 W., Pulaski County, Hydrologic Unit 05120106, (BASS LAKE, IN. quadrangle), on right bank at downstream side of bridge on County Road 700 East, 1.0 mi upstream from Bartee Ditch, 1.3 mi southwest of Ora, and at mile 78.5.

DRAINAGE AREA.--856 mi<sup>2</sup>.

PERIOD OF RECORD.--September 1943 to current year. Monthly discharge only for some periods, published in WSP 1305.

REVISED RECORDS.--WSP 1335: 1944(M). WSP 1505: 1949-50(P). WSP 2109: Drainage area.

GAGE.--Water-stage recorder. Datum of gage is 692.91 ft above National Geodetic Vertical Datum of 1929 (levels by U.S. Army Corps of Engineers). Prior to July 30, 1956, nonrecording gage on upstream side of old highway bridge, 120 ft downstream. July 30, 1956, to Dec. 20, 1964, water-stage recorder on right bank at downstream side of old highway bridge, and Dec. 21, 1964, to Aug. 19, 1965, nonrecording gage on right bank 500 ft downstream. All gages at same datum.

REMARKS.--Records good except for estimated daily discharges, which are poor.

DISCHARGE, CUBIC FEET PER SECOND  
WATER YEAR OCTOBER 2002 TO SEPTEMBER 2003  
DAILY MEAN VALUES

DAY	OCT	NOV	DEC	JAN	FEB	MAR	APR	MAY	JUN	JUL	AUG	SEP
1	158	182	274	324	e250	e260	432	573	572	250	660	370
2	155	182	269	334	e270	e254	416	604	540	237	623	647
3	154	179	270	336	e320	e251	399	583	541	228	607	857
4	172	178	252	328	e400	e250	412	559	541	227	600	830
5	189	186	e270	315	e520	e255	591	686	515	331	558	789
6	177	267	e263	318	e460	e265	840	937	494	627	531	783
7	173	308	e260	309	e400	e275	837	926	471	1,070	508	815
8	171	303	e257	303	e360	e285	884	891	451	1,900	488	804
9	166	288	e253	304	e340	422	884	1,200	432	2,500	465	760
10	165	282	e250	305	e330	491	844	2,030	408	2,830	440	684
11	160	278	e248	291	e325	448	793	2,430	384	2,810	411	616
12	157	273	e246	e294	e320	404	735	2,370	401	2,480	392	576
13	158	271	e244	e292	e315	449	668	2,110	440	2,030	387	551
14	157	268	e243	e290	e310	658	625	1,920	656	1,660	378	534
15	158	265	243	e288	e305	781	563	1,880	701	1,380	366	528
16	158	260	240	e284	e304	745	514	1,850	581	1,170	344	502
17	157	258	237	e280	e305	708	479	1,770	506	968	334	476
18	159	255	252	e278	e304	647	456	1,660	456	837	321	451
19	178	258	278	e274	e310	592	435	1,530	424	745	305	423
20	179	257	311	e271	e320	560	431	1,430	383	668	280	393
21	181	264	336	e270	e325	541	427	1,320	343	954	265	354
22	182	282	341	e270	e330	538	408	1,200	322	1,770	257	344
23	179	289	324	e269	e345	559	377	1,110	307	1,660	248	367
24	174	291	303	e268	e320	555	379	1,030	295	1,230	237	374
25	175	293	307	e262	e295	550	369	958	283	1,030	233	395
26	180	287	e300	e255	e275	561	358	890	273	927	231	397
27	178	287	e292	e250	e270	536	340	819	267	858	247	438
28	178	285	e286	e245	e265	525	327	751	262	847	249	580
29	182	281	e282	e243	---	509	318	694	261	833	260	596
30	186	276	e280	e241	---	461	344	611	254	766	287	573
31	183	---	297	e240	---	437	---	584	---	710	294	---
TOTAL	5,279	7,833	8,508	8,831	9,193	14,772	15,885	37,906	12,764	36,533	11,806	16,807
MEAN	170	261	274	285	328	477	530	1,223	425	1,178	381	560
MAX	189	308	341	336	520	781	884	2,430	701	2,830	660	857
MIN	154	178	237	240	250	250	318	559	254	227	231	344
CFSM	0.20	0.31	0.32	0.33	0.38	0.56	0.62	1.43	0.50	1.38	0.44	0.65
IN.	0.23	0.34	0.37	0.38	0.40	0.64	0.69	1.65	0.55	1.59	0.51	0.73

## STATISTICS OF MONTHLY MEAN DATA FOR WATER YEARS 1944 - 2003, BY WATER YEAR (WY)

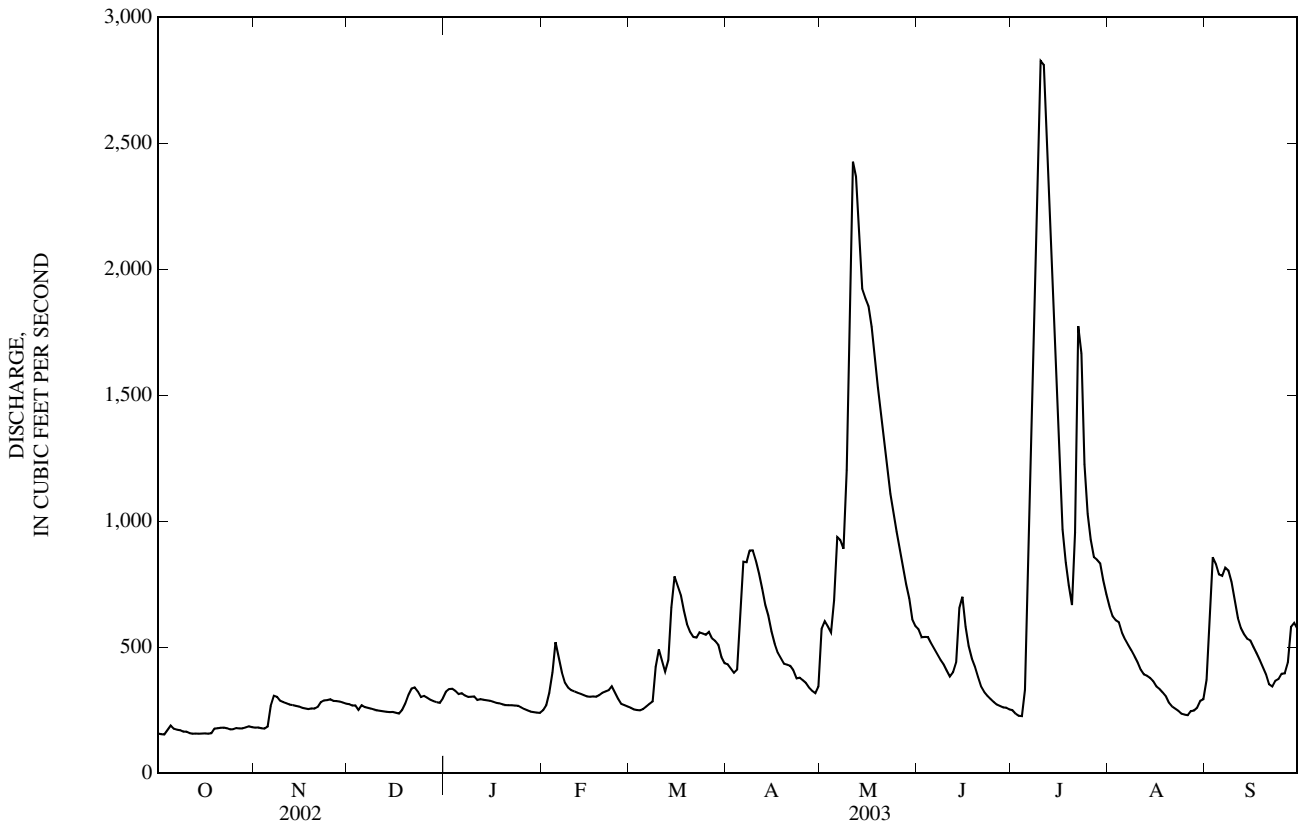
MEAN	476	601	799	987	1,176	1,446	1,550	1,151	916	630	437	367
MAX	2,112	1,933	2,478	3,552	3,020	4,239	4,116	2,869	3,468	1,943	2,699	1,224
(WY)	(1991)	(1973)	(1967)	(1950)	(1959)	(1982)	(1950)	(1981)	(1981)	(1996)	(1990)	(1958)
MIN	134	155	177	183	192	451	525	337	243	180	155	107
(WY)	(1954)	(1954)	(1964)	(1963)	(1963)	(1957)	(1958)	(1958)	(1988)	(1988)	(1988)	(1966)

WABASH RIVER BASIN

03331500 TIPPECANOE RIVER NEAR ORA, IN—Continued

SUMMARY STATISTICS	FOR 2002 CALENDAR YEAR		FOR 2003 WATER YEAR		WATER YEARS 1944 - 2003	
ANNUAL TOTAL	319,245		186,117			
ANNUAL MEAN	875		510		876	
HIGHEST ANNUAL MEAN					1,580	1950
LOWEST ANNUAL MEAN					354	1964
HIGHEST DAILY MEAN	4,120	May 15	2,830	Jul 10	8,450	Jun 15, 1981
LOWEST DAILY MEAN	154	Oct 3	154	Oct 3	87	Sep 13, 1966
ANNUAL SEVEN-DAY MINIMUM	158	Oct 12	158	Oct 12	93	Sep 8, 1966
MAXIMUM PEAK FLOW			2,880	Jul 10	8,660	Jun 15, 1981
MAXIMUM PEAK STAGE			11.85	Jul 10	15.22	Aug 20, 1990
ANNUAL RUNOFF (CFSM)	1.02		0.60		1.02	
ANNUAL RUNOFF (INCHES)	13.87		8.09		13.90	
10 PERCENT EXCEEDS	2,150		905		1,860	
50 PERCENT EXCEEDS	477		340		609	
90 PERCENT EXCEEDS	178		212		218	

e Estimated



03331753 TIPPECANOE RIVER AT WINAMAC, IN

LOCATION.--Lat 41°02'59", long 86°35'58", in SW¼NW¼ sec.13, T.30 N., R.R W., Pulaski County, Hydrologic Unit 05120106, (WINAMAC, IN quadrangle), on the northeast corner of the Washington Street bridge in Winamac, 0.3 mi downstream of the city park, 2 mi north of U.S. Highway 35 bridge, and at mile 70.3.

DRAINAGE AREA.--942 mi<sup>2</sup>.

PERIOD OF RECORD.--August 2001 to current year.

GAGE.--Water-stage recorder. Datum of gage is 674.19 ft above National Geodetic Vertical Datum of 1929.

REMARKS.--Records fair except those for May 11-23, July 10-16, and 23, and estimated daily discharges, which are poor.

DISCHARGE, CUBIC FEET PER SECOND  
WATER YEAR OCTOBER 2002 TO SEPTEMBER 2003  
DAILY MEAN VALUES

DAY	OCT	NOV	DEC	JAN	FEB	MAR	APR	MAY	JUN	JUL	AUG	SEP
1	187	216	282	339	e290	e312	490	650	693	284	788	426
2	184	215	280	358	e320	e308	477	743	656	274	e740	611
3	184	215	e278	365	e380	e302	461	718	655	257	e720	874
4	189	213	e270	359	e460	e290	475	706	654	258	e710	929
5	220	216	e282	345	e570	e300	591	789	627	467	666	886
6	214	239	e280	342	e540	e306	856	994	600	763	628	865
7	205	307	e278	334	e480	e308	935	1,110	575	1,230	610	877
8	203	314	e274	326	e430	e310	954	1,100	547	1,970	589	890
9	194	307	e276	325	e400	378	974	1,310	524	2,390	557	865
10	192	307	e272	325	e380	550	948	1,810	500	2,760	527	811
11	189	292	e268	e320	e375	512	910	2,300	475	2,950	487	731
12	185	285	e265	e324	e370	471	865	2,510	471	2,850	450	674
13	188	278	e262	e320	e368	471	807	2,420	527	2,450	441	638
14	185	277	e260	e319	e364	607	748	2,160	624	2,000	434	621
15	184	278	258	e318	e360	841	693	2,070	854	1,660	419	605
16	185	270	247	e317	e360	843	631	1,990	742	1,410	396	584
17	184	264	245	e316	e362	822	579	1,950	640	1,190	388	551
18	187	259	258	e315	e365	772	533	1,820	569	1,030	370	520
19	209	262	287	e314	e368	707	507	1,680	531	924	348	492
20	213	266	315	e313	e370	659	495	1,630	483	e830	321	458
21	210	267	346	e312	e380	632	504	1,490	430	e1,100	296	418
22	211	286	361	e311	e390	612	486	1,360	396	e1,900	283	407
23	212	299	354	e310	e420	620	453	1,250	374	1,820	270	406
24	208	303	331	e305	e370	632	440	1,170	354	1,510	259	420
25	208	306	308	e300	e350	626	439	1,110	336	1,210	254	435
26	211	303	e310	e295	e340	628	425	1,050	323	1,080	251	452
27	213	296	e305	e290	e330	618	410	956	311	1,000	260	475
28	211	296	e298	e287	e320	591	394	895	304	967	267	607
29	218	291	e292	e283	---	582	384	834	301	963	279	667
30	221	287	e290	e281	---	542	383	756	296	910	308	636
31	222	---	311	e280	---	495	---	719	---	846	325	---
TOTAL	6,226	8,214	8,943	9,848	10,812	16,647	18,247	42,050	15,372	41,253	13,641	18,831
MEAN	201	274	288	318	386	537	608	1,356	512	1,331	440	628
MAX	222	314	361	365	570	843	974	2,510	854	2,950	788	929
MIN	184	213	245	280	290	290	383	650	296	257	251	406
CFSM	0.21	0.29	0.31	0.34	0.41	0.57	0.65	1.44	0.54	1.41	0.47	0.67
IN.	0.25	0.32	0.35	0.39	0.43	0.66	0.72	1.66	0.61	1.63	0.54	0.74

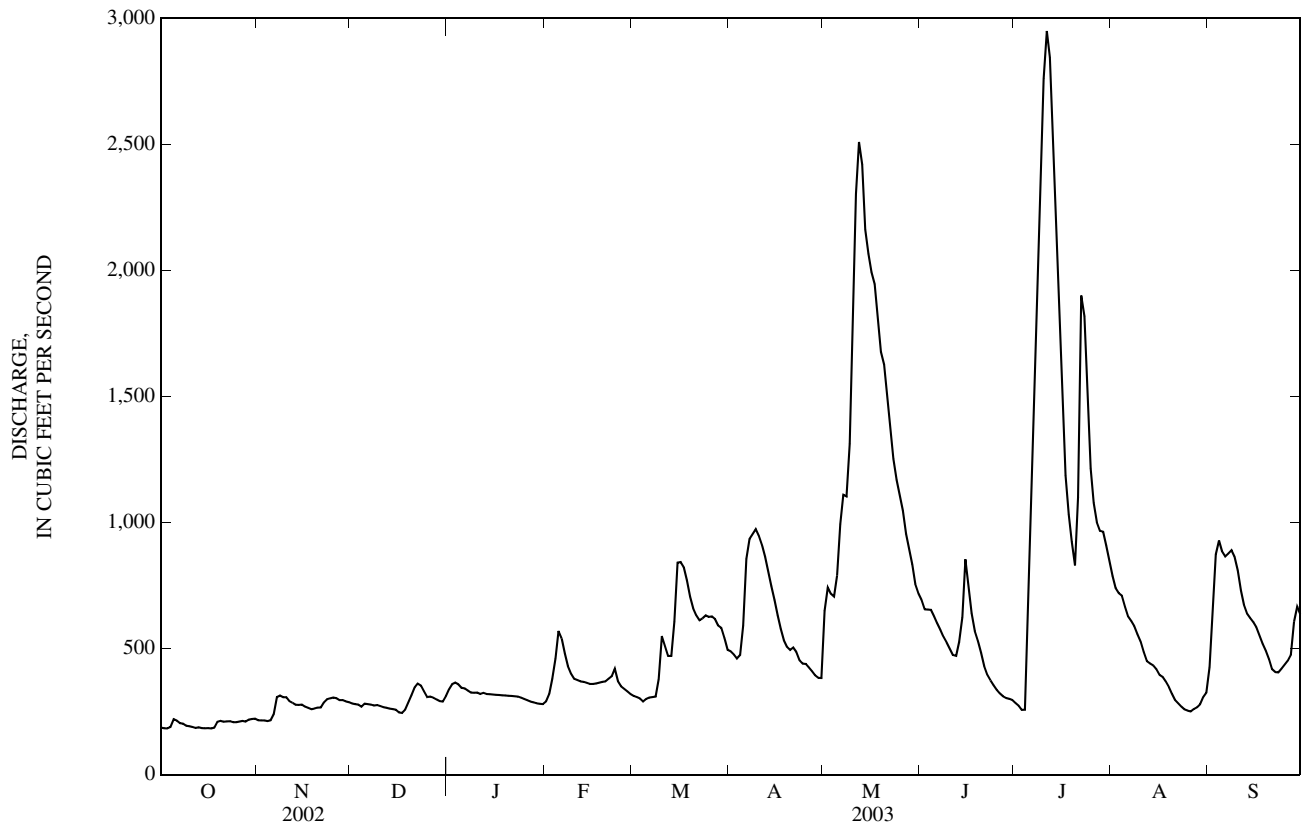
STATISTICS OF MONTHLY MEAN DATA FOR WATER YEARS 2001 - 2003, BY WATER YEAR (WY)

	2001	2002	2003	2001	2002	2003	2001	2002	2003	2001	2002	2003
MEAN	1,027	762	842	552	1,038	1,081	1,441	1,845	733	852	375	418
MAX	1,853	1,250	1,396	786	1,689	1,625	2,273	2,334	953	1,331	440	628
(WY)	(2002)	(2002)	(2002)	(2002)	(2002)	(2002)	(2002)	(2002)	(2002)	(2003)	(2003)	(2003)
MIN	201	274	288	318	386	537	608	1,356	512	373	311	208
(WY)	(2003)	(2003)	(2003)	(2003)	(2003)	(2003)	(2003)	(2003)	(2003)	(2002)	(2002)	(2002)

SUMMARY STATISTICS

	FOR 2002 CALENDAR YEAR		FOR 2003 WATER YEAR		WATER YEARS 2001 - 2003	
ANNUAL TOTAL	341,984		210,084			
ANNUAL MEAN	937		576		914	
HIGHEST ANNUAL MEAN					1,252	
LOWEST ANNUAL MEAN					576	
HIGHEST DAILY MEAN	4,280	May 16	2,950	Jul 11	4,280	May 16, 2002
LOWEST DAILY MEAN	184	Oct 2	184	Oct 2	4.8	Sep 3, 2001
ANNUAL SEVEN-DAY MINIMUM	185	Oct 12	185	Oct 12	5.1	Aug 28, 2001
MAXIMUM PEAK FLOW			3,110	Jul 11	4,600	May 16, 2002
MAXIMUM PEAK STAGE			9.53	Jul 11	11.48	May 16, 2002
ANNUAL RUNOFF (CFSM)	0.99		0.61		0.97	
ANNUAL RUNOFF (INCHES)	13.51		8.30		13.18	
10 PERCENT EXCEEDS	2,280		1,060		2,060	
50 PERCENT EXCEEDS	548		394		622	
90 PERCENT EXCEEDS	209		232		250	

e Estimated





## 03333050 TIPPECANOE RIVER NEAR DELPHI, IN

LOCATION.--Lat 40°35'38", long 86°46'12", in SW $\frac{1}{4}$ SW $\frac{1}{4}$  sec.21, T.25 N., R.3 W., Carroll County, Hydrologic Unit 05120106, (BROOKSTON, IN quadrangle), on left bank 20 ft upstream from bridge on State Highway 18, 1,400 ft east of Springboro, 5 mi west of Delphi, 8.1 mi downstream from Big Creek, and at mile 8.7.

DRAINAGE AREA.--1,869 mi<sup>2</sup>.

PERIOD OF RECORD.--March to December 1903, March to December 1904, March 1905 to July 1906, November and December 1908, July 1939 to September 1987, October 1987 to current year. Published as "at Springboro" 1903-08. Published as "03333000 Tippecanoe River near Delphi:" July 1939 to September 1987.

REVISED RECORDS.--WSP 973: 1942. WSP 1335: 1905-6. WSP 2109: Drainage area. WDR IN-92-1: 1988-1991 (above 5900 ft<sup>3</sup>/s). WDR-IN-94-1: 1991 (maximum discharge).

GAGE.--Water-stage recorder. Datum of gage is 535.00 ft above National Geodetic Vertical Datum of 1929. Mar. 14, 1903 to July 20, 1906, and Nov. 2 to Dec. 31, 1908, nonrecording gage at present site at different datum. July 1939 to Sept. 30, 1987, at site 6.4 mi upstream at datum 17.01 ft higher.

REMARKS.--Records good except for estimated daily discharges, which are poor. Flow regulated by upstream reservoirs.

DISCHARGE, CUBIC FEET PER SECOND  
WATER YEAR OCTOBER 2002 TO SEPTEMBER 2003  
DAILY MEAN VALUES

DAY	OCT	NOV	DEC	JAN	FEB	MAR	APR	MAY	JUN	JUL	AUG	SEP
1	385	267	492	601	e523	565	855	1,130	1,270	603	1,970	2,300
2	393	300	530	844	419	565	818	1,510	1,200	687	1,750	4,340
3	456	403	476	745	534	582	758	1,440	1,330	596	1,630	2,840
4	396	407	248	410	953	417	1,080	1,130	1,300	444	1,690	2,310
5	390	687	250	687	1,050	586	1,390	2,380	1,230	10,000	1,570	1,780
6	324	497	397	831	1,060	864	1,630	2,540	1,170	15,800	1,490	1,530
7	249	336	351	437	674	666	1,730	2,040	1,170	14,400	1,260	1,630
8	473	247	616	521	643	871	2,020	2,810	1,020	14,000	1,460	1,160
9	414	500	470	818	762	1,320	1,910	8,330	1,110	16,000	1,220	1,780
10	404	921	293	523	566	979	1,440	8,960	912	17,300	1,030	1,350
11	428	395	369	e592	570	1,100	1,700	6,850	823	12,800	1,230	1,330
12	407	491	492	e430	601	799	1,340	5,250	1,190	10,100	967	967
13	404	549	451	e402	555	1,010	1,250	4,560	1,440	8,130	916	1,040
14	276	401	424	e400	356	797	1,190	3,820	3,640	6,510	1,160	1,050
15	251	394	532	e618	678	1,120	1,120	3,470	2,610	6,360	920	1,130
16	243	435	491	e503	431	1,270	1,110	3,510	1,860	6,650	818	837
17	354	564	353	e418	566	1,290	975	3,220	1,800	4,650	857	1,170
18	490	402	600	e464	354	1,250	946	2,950	1,360	3,800	1,010	759
19	299	376	604	e430	501	1,110	868	2,610	1,130	3,460	691	903
20	456	507	600	e410	565	1,050	894	2,700	1,100	2,810	767	947
21	491	462	595	e526	565	1,130	1,030	2,430	915	4,990	804	729
22	264	645	593	e411	572	1,010	1,040	2,070	1,020	6,970	705	1,060
23	421	246	593	e420	571	1,050	597	2,090	835	5,710	574	725
24	322	538	597	e398	572	988	796	1,920	865	4,870	576	919
25	405	575	584	e285	591	1,030	767	1,830	636	3,670	580	1,220
26	398	575	392	e569	565	1,090	897	1,730	684	2,880	468	1,290
27	398	432	551	e354	568	859	633	1,550	602	2,760	743	2,370
28	398	407	468	e392	565	870	745	1,490	604	2,530	404	2,220
29	439	407	581	e396	---	1,080	667	1,690	771	2,430	1,640	1,610
30	546	489	590	e400	---	954	686	1,490	751	2,310	1,590	1,590
31	401	---	600	e416	---	631	---	1,280	---	1,900	851	---
TOTAL	11,975	13,855	15,183	15,651	16,930	28,903	32,882	90,780	36,348	196,120	33,341	44,886
MEAN	386	462	490	505	605	932	1,096	2,928	1,212	6,326	1,076	1,496
MAX	546	921	616	844	1,060	1,320	2,020	8,960	3,640	17,300	1,970	4,340
MIN	243	246	248	285	354	417	597	1,130	602	444	404	725
CFSM	0.21	0.25	0.26	0.27	0.32	0.50	0.59	1.57	0.65	3.38	0.58	0.80
IN.	0.24	0.28	0.30	0.31	0.34	0.58	0.65	1.81	0.72	3.90	0.66	0.89

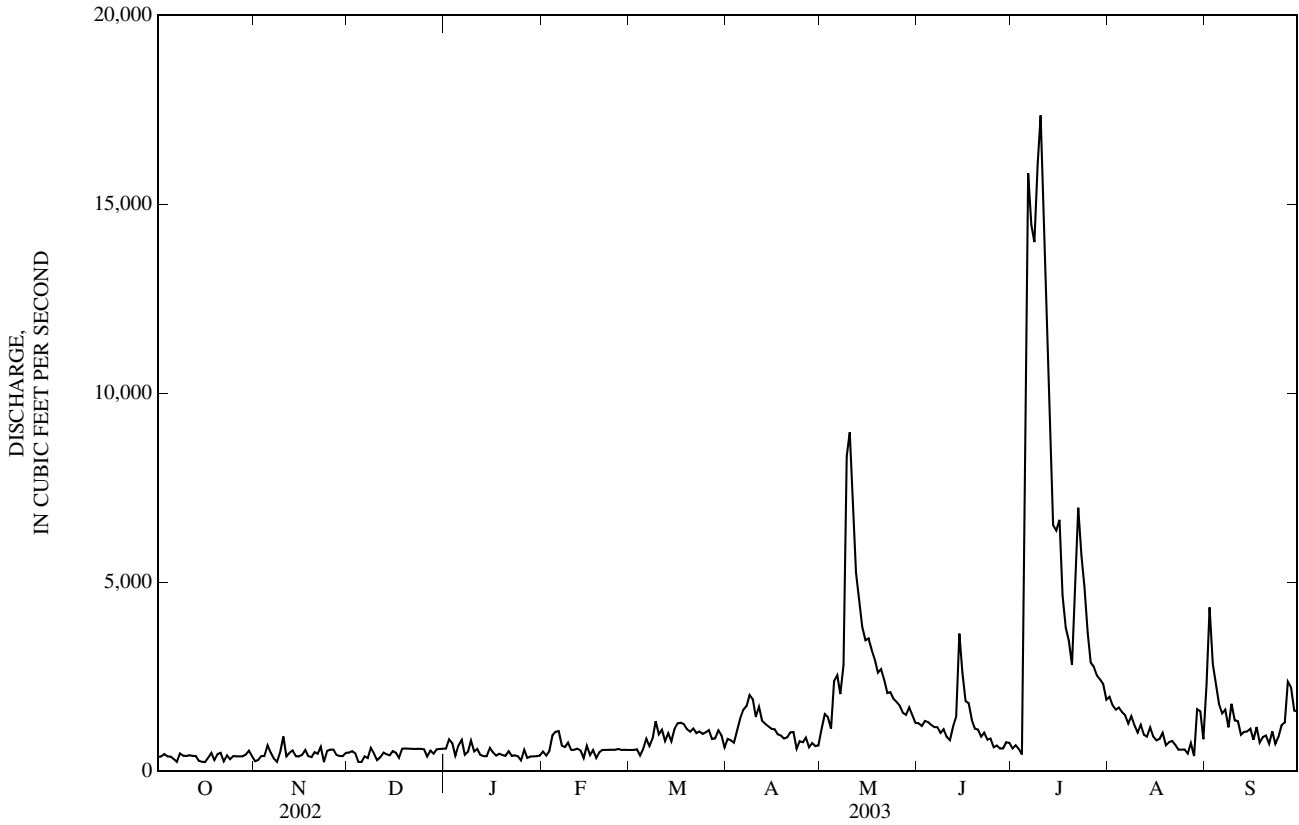
## STATISTICS OF MONTHLY MEAN DATA FOR WATER YEARS 1988 - 2003, BY WATER YEAR (WY)

MEAN	1,284	1,499	1,813	2,423	2,476	2,906	3,024	2,507	2,220	1,968	1,153	1,030
MAX	4,215	4,120	3,819	6,854	4,774	5,184	4,958	4,610	4,324	6,326	4,849	3,092
(WY)	(2002)	(1993)	(1991)	(1993)	(1997)	(1998)	(1994)	(2002)	(1997)	(2003)	(1990)	(1993)
MIN	369	453	490	505	605	811	1,096	983	493	360	308	325
(WY)	(1996)	(2000)	(2003)	(2003)	(2003)	(1996)	(2003)	(1988)	(1988)	(1988)	(1988)	(1999)

03333050 TIPPECANOE RIVER NEAR DELPHI, IN—Continued

SUMMARY STATISTICS	FOR 2002 CALENDAR YEAR		FOR 2003 WATER YEAR		WATER YEARS 1988 - 2003	
ANNUAL TOTAL	697,387		536,854			
ANNUAL MEAN	1,911		1,471		2,023	
HIGHEST ANNUAL MEAN					3,046	
LOWEST ANNUAL MEAN					954	
HIGHEST DAILY MEAN	10,800	May 13	17,300	Jul 10	18,400	Dec 30, 1990
LOWEST DAILY MEAN	243	Oct 16	243	Oct 16	131	Aug 5, 1988
ANNUAL SEVEN-DAY MINIMUM	318	Sep 11	331	Oct 13	255	Aug 2, 1988
MAXIMUM PEAK FLOW			18,500		20,600	
MAXIMUM PEAK STAGE			12.80		13.72	
ANNUAL RUNOFF (CFSM)	1.02		0.79		1.08	
ANNUAL RUNOFF (INCHES)	13.88		10.69		14.70	
10 PERCENT EXCEEDS	4,790		2,780		4,280	
50 PERCENT EXCEEDS	1,080		799		1,440	
90 PERCENT EXCEEDS	364		398		458	

e Estimated



## 03333450 WILDCAT CREEK NEAR JEROME, IN

LOCATION.--Lat 40°26'29", long 85°55'08", in NE $\frac{1}{4}$ SE $\frac{1}{4}$  sec.14, T.23 N., R.5 E., Howard County, Hydrologic Unit 05120107, (GREENTOWN, IN. quadrangle), on right bank at downstream side of bridge on County Road 1100 East, 0.5 mi downstream from Mud Creek, 1.5 mi southeast of Jerome, and at mile 79.9.

DRAINAGE AREA.--146 mi<sup>2</sup>.

PERIOD OF RECORD.--July 1961 to current year.

REVISED RECORDS.--WSP 2109: Drainage area.

GAGE.--Water-stage recorder. Datum of gage is 820.04 ft above National Geodetic Vertical Datum of 1929.

REMARKS.--Records fair except for estimated daily discharges, which are poor.

EXTREMES OUTSIDE PERIOD OF RECORD.--Flood in March 1913 reached a stage of about 18 ft, from information by local residents.

DISCHARGE, CUBIC FEET PER SECOND  
WATER YEAR OCTOBER 2002 TO SEPTEMBER 2003  
DAILY MEAN VALUES

DAY	OCT	NOV	DEC	JAN	FEB	MAR	APR	MAY	JUN	JUL	AUG	SEP
1	4.7	e8.2	11	630	e16	e26	253	35	43	14	37	1,180
2	4.4	e6.8	9.8	317	e17	e25	179	121	32	12	58	3,010
3	4.4	e6.0	9.0	182	e23	e24	138	93	36	11	49	1,460
4	6.0	e6.4	8.4	120	e180	e24	123	62	36	11	37	789
5	7.8	e6.9	7.8	99	e110	e30	156	1,090	30	4,540	91	465
6	7.6	e8.2	7.6	78	e76	e40	118	1,060	25	6,120	57	294
7	6.9	e18	7.6	63	e52	e54	120	627	25	4,550	41	191
8	6.3	e14	7.7	72	e38	e160	147	476	26	2,800	32	131
9	6.3	e11	6.9	156	e30	882	134	571	25	5,050	26	99
10	6.0	e23	6.8	298	e25	625	118	1,130	21	3,950	23	77
11	5.5	182	7.1	e150	e20	389	107	3,100	22	1,930	21	63
12	6.0	104	7.7	e100	e18	548	95	1,970	24	1,160	20	50
13	6.5	51	7.8	e76	e15	1,090	78	896	25	760	18	42
14	e5.3	31	8.2	e60	e13	1,100	68	540	74	513	16	36
15	e6.1	24	8.4	e47	e12	703	68	885	77	400	15	32
16	e5.0	20	8.5	e38	e12	603	67	605	44	540	14	27
17	e5.3	17	7.3	e31	e11	498	64	381	33	342	13	24
18	e5.6	16	8.2	e27	e11	378	57	273	29	239	13	21
19	e6.5	15	32	e23	e12	311	50	208	26	181	13	20
20	e7.9	13	138	e21	e14	440	49	166	22	141	12	20
21	e9.2	13	111	e19	e20	730	50	128	19	241	10	18
22	e7.1	14	63	e18	e50	652	46	110	17	262	10	125
23	e6.8	15	38	e17	e90	384	39	96	16	178	9.2	360
24	e7.3	16	29	e16	e64	270	36	84	15	132	8.4	237
25	e8.0	15	e24	e16	e50	202	41	74	13	101	7.9	842
26	e9.7	14	e19	e16	e40	158	43	63	14	82	7.4	636
27	e13	12	e16	e16	e33	134	35	54	15	72	7.0	1,770
28	e9.2	11	e15	e15	e29	129	31	50	12	68	7.0	1,190
29	e8.4	11	e14	e15	---	859	33	53	12	58	26	610
30	e9.0	13	36	e15	---	559	32	46	14	47	378	365
31	e12	---	496	e15	---	337	---	53	---	40	209	---
TOTAL	219.8	715.5	1,176.8	2,766	1,081	12,364	2,575	15,100	822	34,545	1,285.9	14,184
MEAN	7.09	23.9	38.0	89.2	38.6	399	85.8	487	27.4	1,114	41.5	473
MAX	13	182	496	630	180	1,100	253	3,100	77	6,120	378	3,010
MIN	4.4	6.0	6.8	15	11	24	31	35	12	11	7.0	18
CFSM	0.05	0.16	0.26	0.61	0.26	2.73	0.59	3.34	0.19	7.63	0.28	3.24
IN.	0.06	0.18	0.30	0.70	0.28	3.15	0.66	3.85	0.21	8.80	0.33	3.61

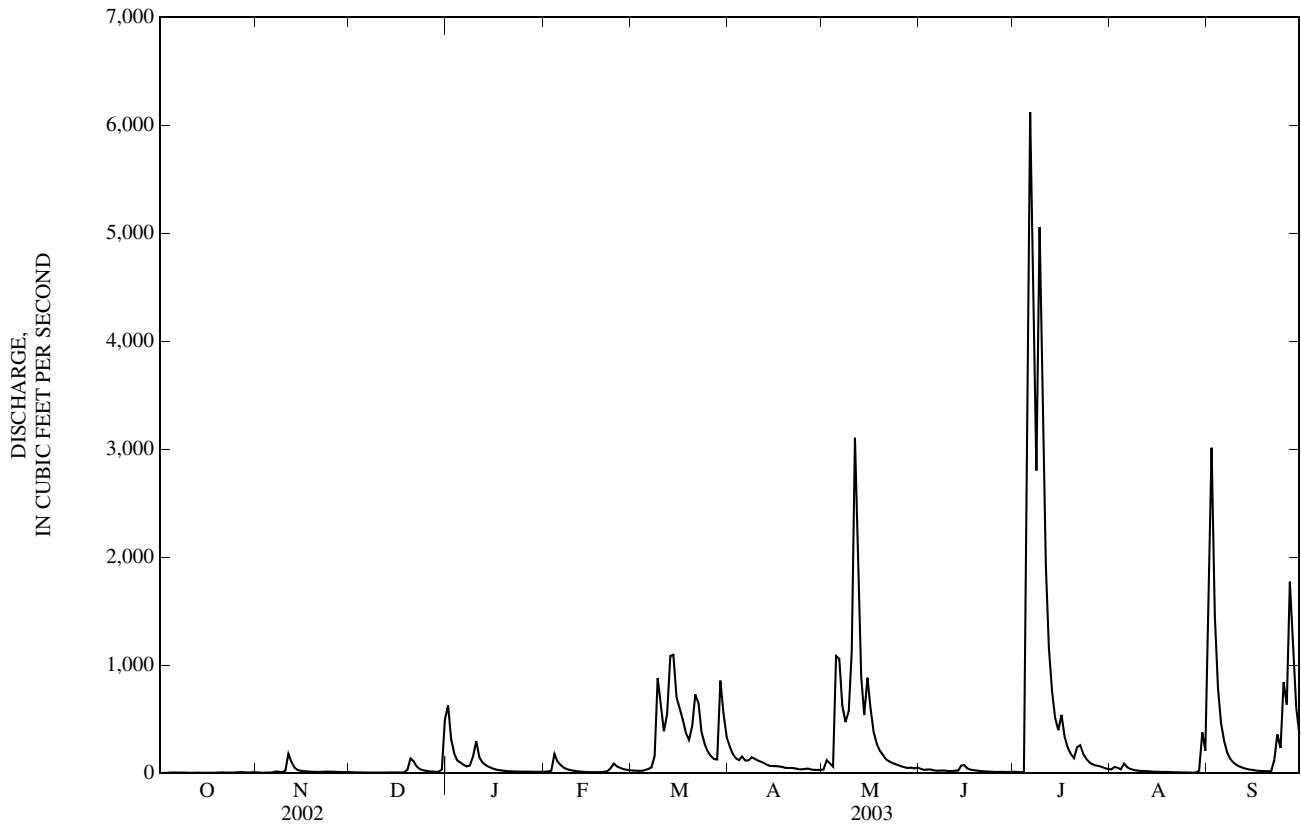
STATISTICS OF MONTHLY MEAN DATA FOR WATER YEARS 1962 - 2003, BY WATER YEAR (WY)

MEAN	50.4	108	155	155	204	277	223	169	136	122	41.8	53.4
MAX	481	834	622	687	649	793	689	487	720	1,114	401	589
(WY)	(2002)	(1993)	(1991)	(1974)	(1976)	(1982)	(1964)	(2003)	(1998)	(2003)	(1998)	(1989)
MIN	1.72	1.53	2.32	1.02	11.2	31.5	16.5	17.9	8.20	7.00	2.86	0.88
(WY)	(1967)	(2000)	(2000)	(1977)	(1963)	(2000)	(2000)	(1976)	(1988)	(1994)	(1999)	(1999)

03333450 WILDCAT CREEK NEAR JEROME, IN—Continued

SUMMARY STATISTICS	FOR 2002 CALENDAR YEAR		FOR 2003 WATER YEAR		WATER YEARS 1962 - 2003	
ANNUAL TOTAL	45,819.4		86,835.0			
ANNUAL MEAN	126		238		141	
HIGHEST ANNUAL MEAN					253	1993
LOWEST ANNUAL MEAN					37.7	2000
HIGHEST DAILY MEAN	3,560	May 13	6,120	Jul 6	6,300	Jun 12, 1998
LOWEST DAILY MEAN	2.5	Sep 11	4.4	Oct 2	0.47	Sep 27, 1999
ANNUAL SEVEN-DAY MINIMUM	2.7	Sep 8	5.7	Oct 11	0.52	Sep 22, 1999
MAXIMUM PEAK FLOW			7,160	Jul 6	7,160	Jul 6, 2003
MAXIMUM PEAK STAGE			14.35	Jul 6	14.35	Jul 6, 2003
ANNUAL RUNOFF (CF5M)	0.86		1.63		0.96	
ANNUAL RUNOFF (INCHES)	11.67		22.13		13.11	
10 PERCENT EXCEEDS	305		604		342	
50 PERCENT EXCEEDS	26		35		45	
90 PERCENT EXCEEDS	5.0		7.8		4.9	

e Estimated



03333600 KOKOMO CREEK NEAR KOKOMO, IN

LOCATION.--Lat 40°26'28", long 86°05'20", in NW¼SW¼ sec.16, T.23 N., R.4 E., Howard County, Hydrologic Unit 05120107,(KOKOMO EAST, IN. quadrangle), on left bank at upstream side of bridge on County Road 200 East, 0.5 mi south of County Road 200 South, 2.6 mi southeast of intersection of U.S. Highways 31 and 35 in Kokomo, and 4.2 mi upstream from mouth.

DRAINAGE AREA.--24.7 mi<sup>2</sup>.

PERIOD OF RECORD.--July 1959 to current year.

REVISED RECORDS.--WSP 2109: Drainage area. WDR IN-72-1: 1970-71(P).

GAGE.--Water-stage recorder. Datum of gage is 807.68 ft above National Geodetic Vertical Datum of 1929.

REMARKS.--Records fair except for estimated daily discharges and those below 1 ft<sup>3</sup>/s, which are poor.

DISCHARGE, CUBIC FEET PER SECOND  
WATER YEAR OCTOBER 2002 TO SEPTEMBER 2003  
DAILY MEAN VALUES

DAY	OCT	NOV	DEC	JAN	FEB	MAR	APR	MAY	JUN	JUL	AUG	SEP
1	0.10	0.96	e0.60	25	e0.46	e1.6	e39	3.7	11	0.76	7.2	256
2	0.10	0.92	e0.54	17	e0.60	e1.5	e32	3.3	8.7	0.77	9.2	363
3	0.10	1.0	e0.50	11	e1.6	e1.4	e24	2.2	9.7	1.00	7.2	161
4	0.22	1.2	0.48	7.4	e11	e1.4	e19	2.0	9.1	1.5	12	114
5	0.47	1.7	0.48	6.3	6.9	e1.7	e23	121	7.3	1,890	8.7	72
6	0.21	2.1	0.46	5.2	4.5	e2.8	e18	92	6.2	1,040	6.8	43
7	0.20	1.6	0.46	3.9	2.9	e4.4	e18	108	5.7	488	5.8	28
8	0.25	1.5	0.47	4.7	2.0	e30	e29	68	5.0	357	5.1	20
9	0.23	1.5	0.43	12	1.9	e75	e25	77	4.9	837	4.6	15
10	0.21	8.9	0.44	23	1.8	e60	e21	144	3.5	554	4.1	12
11	0.20	4.7	0.50	e11	1.6	e37	18	233	3.8	209	3.8	9.1
12	0.18	1.5	0.55	e7.0	1.2	e41	16	141	5.6	164	3.5	7.5
13	0.23	1.3	0.55	e4.5	1.0	91	12	94	11	125	3.2	6.6
14	0.28	1.1	0.53	e3.1	1.1	71	10	68	25	98	3.0	6.2
15	0.30	1.0	0.49	e2.2	0.94	55	9.8	399	15	74	2.8	5.5
16	0.29	1.1	0.43	e1.7	0.61	57	9.6	169	9.6	59	2.7	4.8
17	0.28	0.90	0.44	e1.2	0.60	51	8.7	118	7.5	41	2.8	4.8
18	0.34	0.86	0.80	e1.0	0.62	39	7.2	84	6.2	34	2.4	4.2
19	0.82	0.89	2.0	e0.78	0.72	32	6.0	60	5.1	28	2.1	4.0
20	0.53	0.89	2.8	e0.66	0.99	43	7.2	46	3.8	22	2.0	3.7
21	0.41	0.96	2.2	e0.58	1.8	88	7.0	36	2.9	42	1.9	3.2
22	0.38	1.3	1.8	e0.50	5.0	67	5.6	31	2.5	40	1.9	2.8
23	0.36	1.0	1.1	e0.46	4.8	e46	4.2	27	2.1	30	1.6	4.7
24	0.40	0.84	1.0	e0.44	3.4	e34	4.1	24	1.8	21	1.5	5.4
25	0.89	0.79	0.96	e0.44	e2.6	e24	4.7	20	1.4	17	1.4	178
26	1.2	e0.76	0.81	e0.44	e2.1	e19	4.3	17	1.6	14	1.4	136
27	0.66	e0.74	0.83	e0.44	e1.9	e15	3.1	15	1.8	12	1.4	383
28	0.57	e0.72	0.72	e0.43	e1.8	e14	3.1	14	1.3	11	1.2	160
29	0.86	e0.72	0.75	e0.43	---	e100	3.1	14	1.2	10	6.6	112
30	1.4	e0.76	1.5	e0.43	---	e70	2.9	12	1.1	8.8	2.5	77
31	1.1	---	15	e0.43	---	e54	---	17	---	7.8	13	---
TOTAL	13.77	44.21	40.62	153.66	66.44	1,227.8	394.6	2,260.2	181.4	6,237.63	155.9	2,318.6
MEAN	0.44	1.47	1.31	4.96	2.37	39.6	13.2	72.9	6.05	201	5.03	77.3
MAX	1.4	8.9	15	25	11	100	39	399	25	1,890	25	383
MIN	0.10	0.72	0.43	0.43	0.46	1.4	2.9	2.0	1.1	0.76	1.2	3.2
CFSM	0.02	0.06	0.05	0.20	0.10	1.60	0.53	2.95	0.24	8.15	0.20	3.13
IN.	0.02	0.07	0.06	0.23	0.10	1.85	0.59	3.40	0.27	9.39	0.23	3.49

STATISTICS OF MONTHLY MEAN DATA FOR WATER YEARS 1960 - 2003, BY WATER YEAR (WY)

MEAN	10.7	18.6	24.6	24.4	34.3	47.1	40.4	28.0	19.4	18.9	7.15	7.71
MAX	98.6	144	102	114	129	150	117	87.2	99.7	201	58.5	77.3
(WY)	(2002)	(1993)	(1991)	(1974)	(1990)	(1982)	(1964)	(1996)	(1980)	(2003)	(1998)	(2003)
MIN	0.44	0.55	0.44	0.33	1.98	4.21	2.02	2.52	1.20	1.07	0.50	0.16
(WY)	(2003)	(2000)	(1977)	(1977)	(1964)	(2000)	(2000)	(1976)	(1988)	(1988)	(1988)	(1991)

SUMMARY STATISTICS

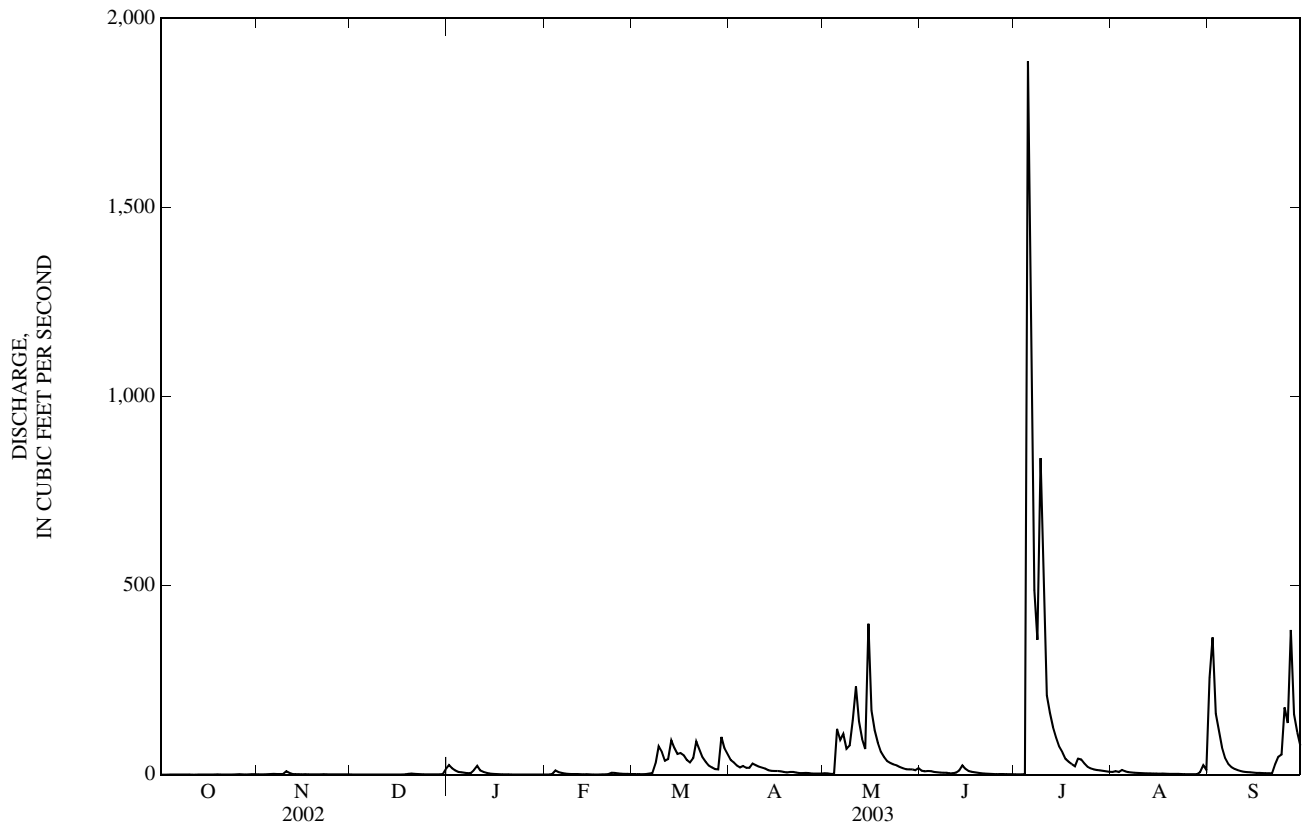
FOR 2002 CALENDAR YEAR

FOR 2003 WATER YEAR

WATER YEARS 1960 - 2003

ANNUAL TOTAL	8,183.16	13,094.83	
ANNUAL MEAN	22.4	35.9	23.4
HIGHEST ANNUAL MEAN			45.2
LOWEST ANNUAL MEAN			6.51
HIGHEST DAILY MEAN	447	1,890	1,890
LOWEST DAILY MEAN	0.01	0.10	0.01
ANNUAL SEVEN-DAY MINIMUM	0.02	0.20	0.02
MAXIMUM PEAK FLOW		2,950	2,950
MAXIMUM PEAK STAGE		11.85	11.85
ANNUAL RUNOFF (CFSM)	0.91	1.45	0.95
ANNUAL RUNOFF (INCHES)	12.32	19.72	12.86
10 PERCENT EXCEEDS	55	74	54
50 PERCENT EXCEEDS	5.2	4.0	7.4
90 PERCENT EXCEEDS	0.18	0.46	0.82

e Estimated



## 03333700 WILDCAT CREEK AT KOKOMO, IN

LOCATION.--Lat 40°28'15", long 86°09'11", in SW $\frac{1}{4}$ NE $\frac{1}{4}$  sec.2, T.23 N., R.3 E., Howard County, Hydrologic Unit 05120107, (KOKOMO WEST, IN quadrangle), on right bank on property of Kokomo Sewage Treatment Plant in Kokomo, 250 ft downstream from Kokomo Creek, 1.0 mi upstream from Dixon Road bridge, and at mile 62.9.

DRAINAGE AREA.--242 mi<sup>2</sup>.

PERIOD OF RECORD.--October 1955 to current year.

REVISED RECORDS.--WSP 2109: Drainage area. WDR-IN-83: 1980, 1981(P), 1982. WDR-IN-88: 1986(P), 1987 (M).

GAGE.--Water-stage recorder. Datum of gage is 775.62 ft above National Geodetic Vertical Datum of 1929 (levels by State of Indiana, Department of Natural Resources). Prior to May 9, 1986, recording gage at site 0.4 mi downstream at present datum.

REMARKS.--Records fair except for estimated daily discharges, which are poor. Some regulation by Kokomo Reservoirs Nos. 1 and 2, (combined capacity 4,170 acre-ft, used for municipal water supply) and by Kokomo Sewage Treatment Plant.

DISCHARGE, CUBIC FEET PER SECOND  
WATER YEAR OCTOBER 2002 TO SEPTEMBER 2003  
DAILY MEAN VALUES

DAY	OCT	NOV	DEC	JAN	FEB	MAR	APR	MAY	JUN	JUL	AUG	SEP
1	19	16	22	683	46	66	360	82	108	39	111	1,440
2	17	16	24	478	48	68	286	99	94	40	166	3,260
3	17	15	27	279	71	58	222	152	112	37	121	2,410
4	23	17	22	183	123	64	292	118	85	64	124	1,200
5	21	29	19	146	189	84	399	977	76	7,950	111	699
6	16	22	20	123	140	105	295	1,570	71	8,980	123	454
7	17	18	18	105	103	111	259	967	55	6,560	100	309
8	17	18	18	108	78	210	264	719	67	4,650	82	218
9	16	19	18	132	69	863	255	877	66	6,800	72	167
10	15	149	18	272	69	883	224	1,490	61	6,420	62	133
11	15	62	18	275	64	578	196	2,690	82	3,390	55	115
12	14	33	17	e161	55	562	179	3,080	189	1,820	50	101
13	15	26	15	e120	48	983	155	1,380	325	1,190	49	88
14	15	24	17	e100	45	1,400	132	808	380	810	46	89
15	15	41	17	e91	47	957	122	1,580	342	664	43	75
16	15	50	22	88	42	781	124	1,060	193	653	39	65
17	15	38	19	83	35	676	136	663	141	541	65	59
18	16	34	29	73	32	552	97	476	114	403	40	62
19	31	34	61	66	35	435	99	367	98	306	37	63
20	17	32	68	64	38	512	114	320	81	242	35	58
21	17	34	146	59	41	723	107	258	69	458	33	57
22	15	38	119	55	94	939	98	205	62	455	34	256
23	16	30	82	48	114	599	86	188	57	326	32	370
24	15	29	68	42	118	413	79	165	51	237	31	577
25	34	31	60	36	91	327	94	155	47	188	32	1,240
26	20	31	54	37	77	261	84	138	54	154	32	1,250
27	15	31	46	38	69	193	78	122	46	175	31	2,550
28	16	25	40	39	65	83	73	113	43	150	31	2,000
29	34	24	36	43	---	370	75	113	45	125	167	1,030
30	20	24	55	43	---	821	69	111	42	107	137	656
31	16	---	256	41	---	487	---	174	---	92	348	---
TOTAL	564	990	1,451	4,111	2,046	15,164	5,053	21,217	3,256	54,026	2,439	21,051
MEAN	18.2	33.0	46.8	133	73.1	489	168	684	109	1,743	78.7	702
MAX	34	149	256	683	189	1,400	399	3,080	380	8,980	348	3,260
MIN	14	15	15	36	32	58	69	82	42	37	31	57
CFSM	0.08	0.14	0.19	0.55	0.30	2.02	0.70	2.83	0.45	7.20	0.33	2.90
IN.	0.09	0.15	0.22	0.63	0.31	2.33	0.78	3.26	0.50	8.30	0.37	3.24

STATISTICS OF MONTHLY MEAN DATA FOR WATER YEARS 1956 - 2003, BY WATER YEAR (WY)

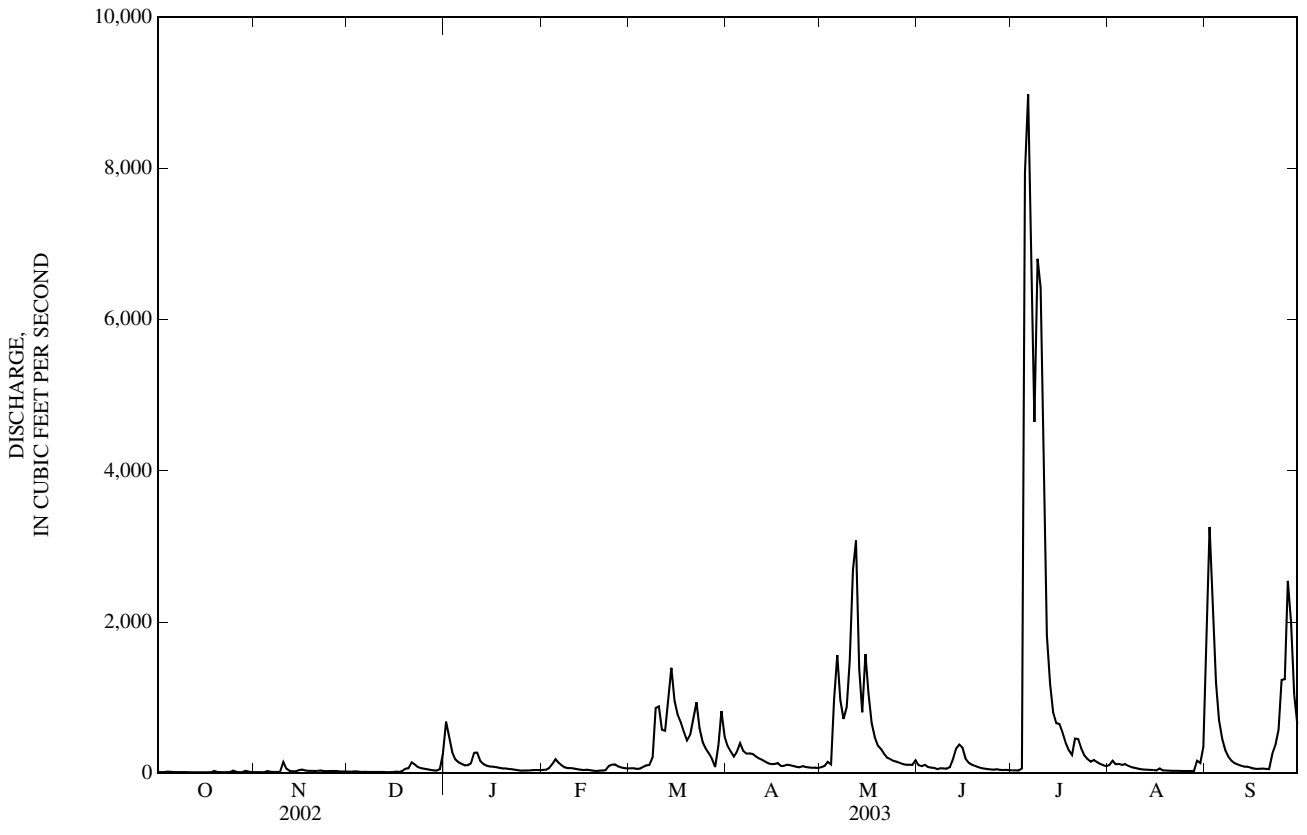
MEAN	95.1	186	252	254	342	436	414	287	253	213	92.9	95.4
MAX	752	1,387	968	1,375	1,097	1,376	1,117	835	1,432	1,743	602	879
(WY)	(2002)	(1993)	(1991)	(1974)	(1990)	(1982)	(1957)	(1996)	(1958)	(2003)	(1998)	(1989)
MIN	11.2	15.5	13.8	15.6	25.8	62.4	35.3	53.6	28.2	28.6	22.7	12.8
(WY)	(1957)	(1957)	(1964)	(2000)	(1964)	(2000)	(2000)	(1988)	(1988)	(1988)	(2000)	(1956)

WABASH RIVER BASIN

03333700 WILDCAT CREEK AT KOKOMO, IN—Continued

SUMMARY STATISTICS	FOR 2002 CALENDAR YEAR		FOR 2003 WATER YEAR		WATER YEARS 1956 - 2003	
ANNUAL TOTAL	77,067		131,368			
ANNUAL MEAN	211		360		243	
HIGHEST ANNUAL MEAN					444	1993
LOWEST ANNUAL MEAN					84.8	2000
HIGHEST DAILY MEAN	3,390	May 14	8,980	Jul 6	8,980	Jul 6, 2003
LOWEST DAILY MEAN	14	Oct 12	14	Oct 12	7.2	Sep 30, 1956
ANNUAL SEVEN-DAY MINIMUM	15	Oct 10	15	Oct 10	8.3	Dec 28, 1963
MAXIMUM PEAK FLOW			9,500	Jul 5	9,500	Jul 5, 2003
MAXIMUM PEAK STAGE			17.75	Jul 5	17.75	Jul 5, 2003
ANNUAL RUNOFF (CFSM)	0.87		1.49		1.00	
ANNUAL RUNOFF (INCHES)	11.85		20.19		13.63	
10 PERCENT EXCEEDS	534		809		576	
50 PERCENT EXCEEDS	64		83		88	
90 PERCENT EXCEEDS	18		18		24	

e Estimated





03334000 WILDCAT CREEK AT OWASCO, IN

LOCATION.--Lat 40°27'50", long 86°38'15", in SE<sup>1</sup>/<sub>4</sub>SE<sup>1</sup>/<sub>4</sub> sec.4, T.23 N., R.2 W., Carroll County, Hydrologic Unit 05120107, (PYRMONT, IN quadrangle), on left bank 200 ft downstream from bridge on State Highway 39, 0.5 mi northwest of Owasco, 8.7 mi south of Delphi, and 15 mi upstream from South Fork Wildcat Creek.

DRAINAGE AREA.--396 mi<sup>2</sup>.

PERIOD OF RECORD.--October 1943 to September 1973. Annual maximum, water years 1975-81. October 1988 to current year. Prior to March 1944 monthly discharge only, published in WSP 1305.

REVISED RECORDS.--WSP 1625: 1958. WSP 2109: Drainage area. WDR 94-1: 1988-1993 (Peak of record).

GAGE.--Water-stage recorder. Datum of gage is 624.63 ft above National Geodetic Vertical Datum of 1929. Prior to Oct. 1, 1950, nonrecording gage at site 500 ft upstream at same datum.

REMARKS.--Records fair except estimated daily discharges, which are poor. Some regulation at low stages for municipal water supply by Kokomo Water Company since 1955.

EXTREMES OUTSIDE PERIOD OF RECORD.--Flood of May 18, 1943, reached a stage of 14.00 ft, from floodmarks.

DISCHARGE, CUBIC FEET PER SECOND  
WATER YEAR OCTOBER 2002 TO SEPTEMBER 2003  
DAILY MEAN VALUES

DAY	OCT	NOV	DEC	JAN	FEB	MAR	APR	MAY	JUN	JUL	AUG	SEP
1	46	53	50	444	e76	e100	541	120	261	102	207	897
2	43	47	50	705	e80	e98	439	132	186	95	194	2,870
3	43	44	47	486	e90	e96	367	136	175	91	224	3,640
4	42	45	44	337	e120	e96	316	187	192	86	212	3,260
5	42	46	e40	246	e250	141	510	828	163	3,170	197	1,400
6	49	48	e40	207	e300	207	536	1,660	145	16,300	187	843
7	43	69	e39	171	e200	197	433	1,750	138	12,100	180	636
8	39	58	e39	152	e140	249	423	1,290	121	9,440	171	515
9	38	52	e39	165	e120	884	413	1,150	122	8,430	160	424
10	39	63	e40	248	e110	1,120	384	1,660	123	10,400	149	362
11	37	299	43	367	e100	894	347	2,430	153	9,270	139	310
12	38	164	42	e280	e90	638	307	3,020	333	5,640	130	269
13	38	90	41	e220	e84	826	270	3,370	738	3,210	122	238
14	36	69	41	e180	e80	1,430	240	1,600	1,220	1,940	115	216
15	37	62	39	e140	e78	1,550	214	1,420	1,060	1,470	109	205
16	33	57	38	e120	e76	1,160	198	1,910	667	1,720	104	190
17	36	75	38	e110	e72	1,000	193	1,220	456	1,190	100	172
18	37	69	45	e100	e70	839	199	823	359	944	111	162
19	42	62	49	e95	70	681	161	635	289	718	111	155
20	46	62	83	e90	73	601	162	539	235	557	98	155
21	52	64	105	e86	81	730	182	481	196	499	82	148
22	45	63	146	e82	107	1,030	174	406	170	677	78	154
23	39	68	141	e80	233	1,010	156	352	148	645	74	387
24	42	62	107	e77	227	667	141	320	135	541	71	455
25	43	57	94	e76	e170	507	138	280	125	438	69	968
26	46	55	e85	e76	e130	426	146	256	119	364	66	1,420
27	71	57	e78	e72	e120	364	140	234	113	312	64	2,490
28	50	56	e69	e70	e110	290	128	214	115	288	62	3,510
29	46	55	67	e70	---	199	129	207	102	279	62	2,690
30	47	52	65	e70	---	659	127	200	98	255	224	1,330
31	68	---	94	e70	---	791	---	254	---	229	229	---
TOTAL	1,353	2,123	1,938	5,692	3,457	19,480	8,114	29,084	8,457	91,400	4,101	30,471
MEAN	43.6	70.8	62.5	184	123	628	270	938	282	2,948	132	1,016
MAX	71	299	146	705	300	1,550	541	3,370	1,220	16,300	229	3,640
MIN	33	44	38	70	70	96	127	120	98	86	62	148
CFSM	0.11	0.18	0.16	0.46	0.31	1.59	0.68	2.37	0.71	7.45	0.33	2.56
IN.	0.13	0.20	0.18	0.53	0.32	1.83	0.76	2.73	0.79	8.59	0.39	2.86

STATISTICS OF MONTHLY MEAN DATA FOR WATER YEARS 1945 - 2003, BY WATER YEAR (WY)

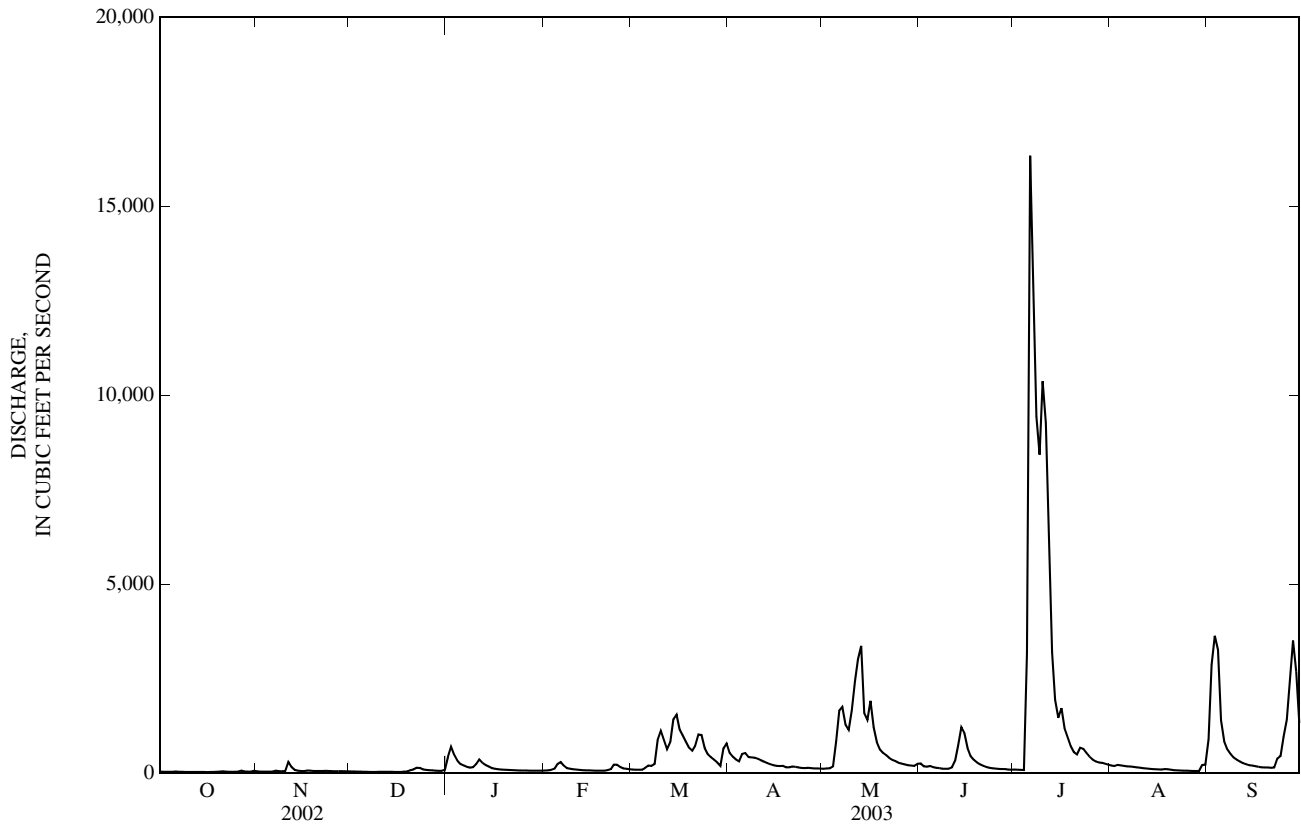
MEAN	161	253	327	519	516	621	675	471	403	360	142	153
MAX	1,011	2,024	1,325	3,083	1,725	1,301	1,857	1,108	2,536	2,948	707	1,339
(WY)	(2002)	(1993)	(1958)	(1950)	(1959)	(1997)	(1957)	(1996)	(1958)	(2003)	(1958)	(1989)
MIN	20.0	30.3	25.9	24.6	50.0	95.4	67.6	120	84.8	41.5	37.1	20.6
(WY)	(1945)	(1945)	(1945)	(1945)	(1963)	(2000)	(2000)	(1954)	(1949)	(1954)	(1954)	(1954)

WABASH RIVER BASIN

03334000 WILDCAT CREEK AT OWASCO, IN—Continued

SUMMARY STATISTICS	FOR 2002 CALENDAR YEAR		FOR 2003 WATER YEAR		WATER YEARS 1945 - 2003	
ANNUAL TOTAL	126,657		205,670			
ANNUAL MEAN	347		563		383	
HIGHEST ANNUAL MEAN					733	
LOWEST ANNUAL MEAN					104	
HIGHEST DAILY MEAN	3,870	May 15	16,300	Jul 6	16,300	Jul 6, 2003
LOWEST DAILY MEAN	33	Oct 16	33	Oct 16	12	Oct 23, 1944
ANNUAL SEVEN-DAY MINIMUM	36	Oct 11	36	Oct 11	15	Sep 23, 1954
MAXIMUM PEAK FLOW			19,300	Jul 6	19,300	Jul 6, 2003
MAXIMUM PEAK STAGE			16.22	Jul 6	16.22	Jul 6, 2003
ANNUAL RUNOFF (CFSM)	0.88		1.42		0.97	
ANNUAL RUNOFF (INCHES)	11.90		19.32		13.13	
10 PERCENT EXCEEDS	844		1,170		900	
50 PERCENT EXCEEDS	132		152		164	
90 PERCENT EXCEEDS	42		45		41	

e Estimated



## 03334500 SOUTH FORK WILDCAT CREEK NEAR LAFAYETTE, IN

LOCATION.--Lat 40°25'04", long 86°46'05", in SW<sup>1</sup>/<sub>4</sub>SW<sup>1</sup>/<sub>4</sub> sec.21, T.23 N., R.3 W., Tippecanoe County, Hydrologic Unit 05120107, (LAFAYETTE EAST, IN. quadrangle), on right bank 40 ft upstream from bridge on State Highway 26, 0.5 mi upstream from Middle Fork, 4.4 mi upstream from mouth, and 5 mi east of Lafayette.

DRAINAGE AREA.--243 mi<sup>2</sup>.

PERIOD OF RECORD.--October 1943 to current year. Prior to March 1944 monthly discharge only, published in WSP 1305.

REVISED RECORDS.--WSP 1335: 1948(M). WSP 1505: 1947. WSP 1725: 1951-53(M), 1955(M). WSP 1909: 1955(P). WSP 2109: Drainage area.

GAGE.--Water-stage recorder. Datum of gage is 566.60 ft above National Geodetic Vertical Datum of 1929 (Indiana Department of Highways bench mark). Prior to July 29, 1954, nonrecording gage at site 40 ft downstream at same datum.

REMARKS.--Records fair except for estimated daily discharges, which are poor. At times peaks affected by backwater from Middle Fork.

EXTREMES OUTSIDE PERIOD OF RECORD.--Flood in May 1943 reached a stage of 16.8 ft, from floodmarks, discharge, 17,900 ft<sup>3</sup>/s by contracted-opening measurement.

DISCHARGE, CUBIC FEET PER SECOND  
WATER YEAR OCTOBER 2002 TO SEPTEMBER 2003  
DAILY MEAN VALUES

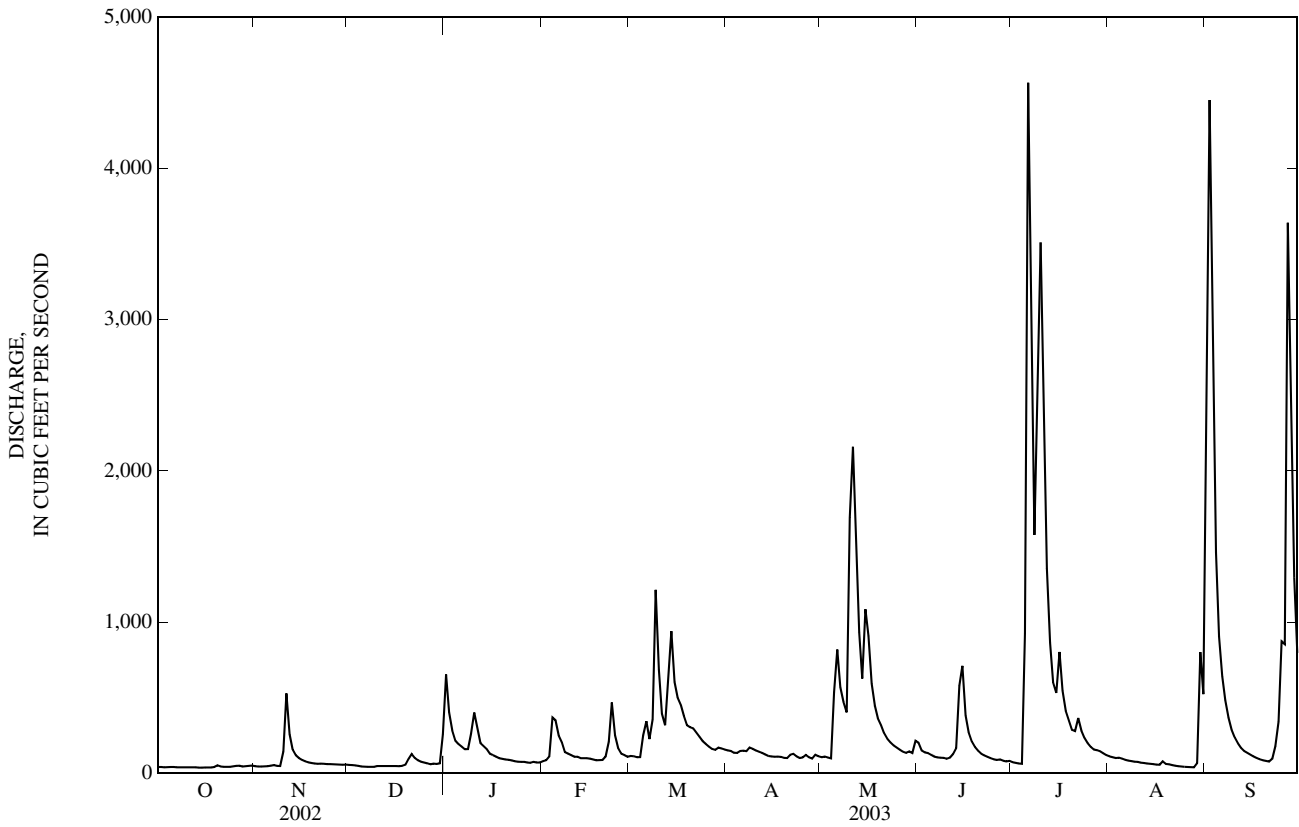
DAY	OCT	NOV	DEC	JAN	FEB	MAR	APR	MAY	JUN	JUL	AUG	SEP
1	42	47	56	653	e80	115	152	107	203	74	112	2,220
2	42	46	55	403	e86	113	147	111	151	69	107	4,450
3	40	45	53	282	111	107	137	104	138	66	101	2,770
4	41	46	49	216	368	107	135	99	134	63	103	1,460
5	42	48	e45	194	350	253	148	537	122	925	97	905
6	42	51	e44	177	250	345	150	818	111	4,570	90	642
7	40	55	e43	159	204	226	147	570	106	3,700	84	484
8	40	50	e43	160	e140	356	170	471	103	1,580	82	369
9	40	49	e43	262	e130	1,210	161	403	102	2,630	77	291
10	40	145	48	401	e120	687	151	1,690	96	3,510	76	238
11	40	529	49	307	e110	395	142	2,160	103	2,310	71	199
12	40	258	48	e200	e110	318	135	1,490	128	1,360	68	169
13	40	158	48	e180	e100	627	125	933	166	864	66	148
14	38	120	48	e160	e100	940	115	627	580	601	63	136
15	38	101	49	e130	e100	604	112	1,090	711	531	61	123
16	39	88	48	e120	e97	502	110	909	383	803	58	112
17	39	79	47	e110	e92	453	110	593	271	545	56	102
18	39	73	50	e100	e86	382	109	448	211	414	79	93
19	42	69	56	e96	88	318	102	363	175	351	63	87
20	52	65	95	e92	89	304	101	318	150	287	60	82
21	45	63	127	e90	111	297	123	265	130	279	54	78
22	43	64	102	e85	209	268	129	228	118	366	51	98
23	43	64	87	e80	469	242	112	205	108	283	48	179
24	43	62	77	e77	251	212	102	185	101	234	46	342
25	46	61	e72	e76	165	194	106	171	93	200	43	872
26	49	60	e66	e76	e130	177	121	156	89	176	42	853
27	51	59	e60	e72	e120	162	105	142	92	157	41	3,640
28	45	58	64	e70	e110	156	97	135	84	153	40	2,250
29	48	57	63	e76	---	170	122	145	79	145	66	1,290
30	49	57	66	e72	---	165	113	134	82	133	802	796
31	52	---	258	e72	---	157	---	216	---	120	524	---
TOTAL	1,330	2,727	2,059	5,248	4,376	10,562	3,789	15,823	5,120	27,499	3,331	25,478
MEAN	42.9	90.9	66.4	169	156	341	126	510	171	887	107	849
MAX	52	529	258	653	469	1,210	170	2,160	711	4,570	802	4,450
MIN	38	45	43	70	80	107	97	99	79	63	40	78
CFSM	0.18	0.37	0.27	0.70	0.64	1.40	0.52	2.10	0.70	3.65	0.44	3.49
IN.	0.20	0.42	0.32	0.80	0.67	1.62	0.58	2.42	0.78	4.21	0.51	3.90

## STATISTICS OF MONTHLY MEAN DATA FOR WATER YEARS 1944 - 2003, BY WATER YEAR (WY)

MEAN	101	169	236	289	337	408	398	309	282	180	98.1	107
MAX	568	1,304	954	1,808	929	1,143	1,172	881	1,674	954	510	849
(WY)	(2002)	(1993)	(1991)	(1950)	(1985)	(1982)	(1964)	(1983)	(1958)	(1992)	(1958)	(1989)
MIN	22.9	27.2	23.5	19.5	37.5	62.6	45.9	67.6	40.6	26.2	18.3	18.0
(WY)	(1964)	(2000)	(1964)	(1977)	(1963)	(2000)	(2000)	(1976)	(1977)	(1977)	(1944)	(1944)

SUMMARY STATISTICS	FOR 2002 CALENDAR YEAR		FOR 2003 WATER YEAR		WATER YEARS 1944 - 2003	
ANNUAL TOTAL	87,941		107,342			
ANNUAL MEAN	241		294		242	
HIGHEST ANNUAL MEAN					473	1950
LOWEST ANNUAL MEAN					79.2	1954
HIGHEST DAILY MEAN	3,320	May 13	4,570	Jul 6	11,000	May 2, 1983
LOWEST DAILY MEAN	38	Sep 14	38	Oct 14	15	Sep 19, 1944
ANNUAL SEVEN-DAY MINIMUM	39	Sep 11	39	Oct 12	16	Sep 17, 1944
MAXIMUM PEAK FLOW			6,130	Jul 6	15,100	May 2, 1983
MAXIMUM PEAK STAGE			11.77	Jul 6	15.68	May 2, 1983
ANNUAL RUNOFF (CFSM)	0.99		1.21		1.00	
ANNUAL RUNOFF (INCHES)	13.46		16.43		13.54	
10 PERCENT EXCEEDS	526		627		527	
50 PERCENT EXCEEDS	104		112		109	
90 PERCENT EXCEEDS	43		46		34	

e Estimated



## 03335000 WILDCAT CREEK NEAR LAFAYETTE, IN

LOCATION.--Lat 40°26'26", long 86°49'45", in SW<sup>1</sup>/<sub>4</sub>NW<sup>1</sup>/<sub>4</sub> sec.13, T.23 N., R.4 W., Tippecanoe County, Hydrologic Unit 05120107, (LAFAYETTE EAST, IN quadrangle), on right bank about 200 ft downstream of bridge on County Road 2A East, 2.8 mi downstream from South Fork Wildcat Creek, 3.7 mi northeast of courthouse in Lafayette, and 4.8 mi upstream from mouth.

DRAINAGE AREA.--794 mi<sup>2</sup>.

PERIOD OF RECORD.--May 1954 to current year.

REVISED RECORDS.--WSP 1555: 1955, 1957(M), WSP 2109: Drainage area.

GAGE.--Water-stage recorder. Datum of gage is 527.66 ft above National Geodetic Vertical Datum of 1929 (Indiana Flood Control and Water Resources Commission bench mark). Nonrecording gage prior to June 13, 1957, and August 31, 1974, to May 20, 1976, at present site and datum.

REMARKS.--Records fair except for estimated daily discharges, which are poor.

EXTREMES OUTSIDE PERIOD OF RECORD.--Flood of March 1913 reached a stage of about 25.4 ft, from profile by State of Indiana, Department of Natural Resources.

DISCHARGE, CUBIC FEET PER SECOND  
WATER YEAR OCTOBER 2002 TO SEPTEMBER 2003  
DAILY MEAN VALUES

DAY	OCT	NOV	DEC	JAN	FEB	MAR	APR	MAY	JUN	JUL	AUG	SEP
1	120	141	159	1,050	e170	e220	751	284	591	234	438	3,890
2	112	122	155	1,210	e180	e220	633	285	437	225	420	8,400
3	108	116	152	922	e210	e220	553	287	400	212	516	7,210
4	113	116	138	651	617	e230	500	318	397	204	446	5,520
5	110	122	e130	525	700	540	588	1,500	370	3,610	409	2,950
6	110	127	e120	453	606	717	769	2,470	333	15,900	389	1,840
7	111	130	e120	396	516	549	649	2,500	312	19,100	382	1,310
8	103	146	e120	370	e320	760	667	2,070	296	13,100	355	1,010
9	103	130	e120	498	e280	2,240	635	1,680	288	13,500	331	833
10	102	140	e125	747	e260	1,920	599	3,480	288	14,300	312	705
11	102	863	e130	725	e250	1,490	545	5,230	337	13,400	285	609
12	100	685	131	573	e240	1,150	499	4,780	595	9,460	263	533
13	105	403	130	e450	e230	1,410	456	4,640	1,170	5,220	249	488
14	98	300	130	e400	e210	2,410	412	2,960	2,470	3,120	241	458
15	97	252	129	e300	e200	2,220	383	2,910	2,260	2,630	234	434
16	98	222	127	e280	e190	1,780	361	3,290	1,500	3,480	222	412
17	96	207	127	e260	e180	1,570	350	2,280	1,010	2,320	222	379
18	99	213	136	e240	e170	1,370	351	1,630	760	1,800	287	362
19	112	195	161	e220	e180	1,150	322	1,260	615	1,470	252	345
20	120	183	208	e210	e180	1,020	310	1,080	513	1,160	214	342
21	120	184	308	e200	219	1,070	336	947	435	1,100	193	329
22	117	185	297	e190	350	1,200	360	792	386	1,580	181	363
23	111	180	317	e180	802	1,310	319	684	346	1,300	171	587
24	106	184	e260	e170	609	993	289	615	317	1,010	161	870
25	119	174	e230	e170	e350	794	293	557	292	834	154	1,980
26	124	170	e220	e170	e260	675	308	509	279	719	145	2,700
27	131	169	e206	e160	e250	583	298	465	269	641	139	7,480
28	141	167	e200	e160	e230	525	268	438	263	627	133	6,600
29	131	165	192	e160	---	443	298	437	247	601	192	4,720
30	127	164	190	e160	---	587	299	418	242	536	1,050	2,700
31	127	---	410	e160	---	1,000	---	545	---	480	1,090	---
TOTAL	3,473	6,555	5,578	12,360	8,959	32,366	13,401	51,341	18,018	133,873	10,076	66,359
MEAN	112	218	180	399	320	1,044	447	1,656	601	4,318	325	2,212
MAX	141	863	410	1,210	802	2,410	769	5,230	2,470	19,100	1,090	8,400
MIN	96	116	120	160	170	220	268	284	242	204	133	329
CFSM	0.14	0.28	0.23	0.50	0.40	1.31	0.56	2.09	0.76	5.44	0.41	2.79
IN.	0.16	0.31	0.26	0.58	0.42	1.52	0.63	2.41	0.84	6.27	0.47	3.11

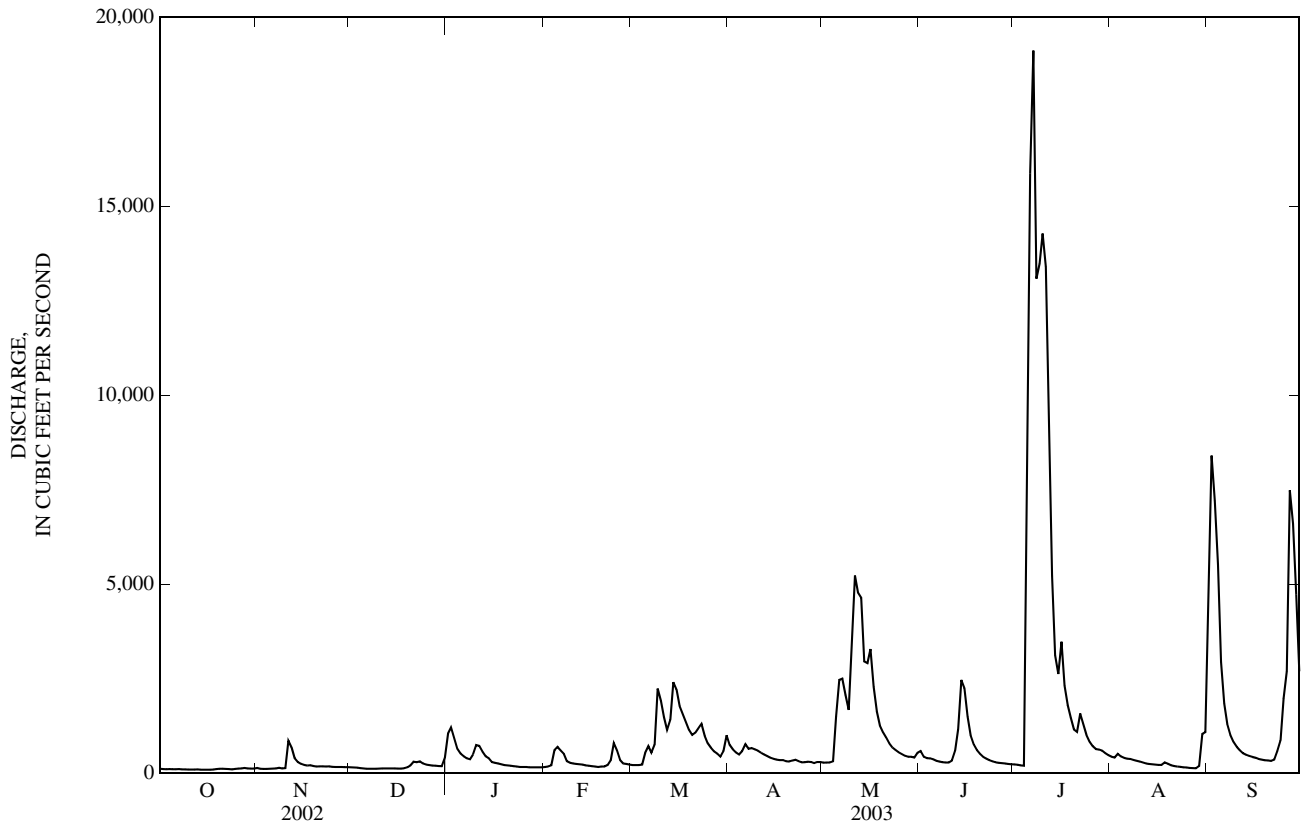
## STATISTICS OF MONTHLY MEAN DATA FOR WATER YEARS 1955 - 2003, BY WATER YEAR (WY)

MEAN	321	561	788	804	1,066	1,361	1,277	964	875	672	338	329
MAX	1,792	3,963	2,474	3,711	3,227	3,991	3,657	2,614	5,210	4,318	1,511	2,546
(WY)	(2002)	(1993)	(1991)	(1974)	(1976)	(1982)	(1964)	(1983)	(1958)	(2003)	(1958)	(1989)
MIN	67.9	85.6	67.0	61.6	104	196	146	231	130	84.4	79.8	68.8
(WY)	(1964)	(1964)	(1964)	(1977)	(1963)	(2000)	(2000)	(1976)	(1988)	(1977)	(1966)	(1999)

03335000 WILDCAT CREEK NEAR LAFAYETTE, IN—Continued

SUMMARY STATISTICS	FOR 2002 CALENDAR YEAR		FOR 2003 WATER YEAR		WATER YEARS 1955 - 2003	
ANNUAL TOTAL	266,726		362,359			
ANNUAL MEAN	731		993		778	
HIGHEST ANNUAL MEAN					1,460	1993
LOWEST ANNUAL MEAN					264	2000
HIGHEST DAILY MEAN	6,250	May 14	19,100	Jul 7	22,100	Jun 10, 1958
LOWEST DAILY MEAN	91	Sep 16	96	Oct 17	47	Sep 6, 1964
ANNUAL SEVEN-DAY MINIMUM	94	Sep 13	99	Oct 12	51	Dec 20, 1963
MAXIMUM PEAK FLOW			23,500	Jul 7	25,000	Jun 10, 1958
MAXIMUM PEAK STAGE			23.64	Jul 7	23.64	Jul 7, 2003
ANNUAL RUNOFF (CFSM)	0.92		1.25		0.98	
ANNUAL RUNOFF (INCHES)	12.50		16.98		13.31	
10 PERCENT EXCEEDS	1,690		2,250		1,760	
50 PERCENT EXCEEDS	314		337		358	
90 PERCENT EXCEEDS	120		127		112	

e Estimated



## 03335500 WABASH RIVER AT LAFAYETTE, IN

LOCATION.--Lat 40°25'19", long 86°53'49", in NE $\frac{1}{4}$ SW $\frac{1}{4}$  sec.20, T.23 N., R.4 W., Tippecanoe County, Hydrologic Unit 05120108, (LAFAYETTE WEST, IN. quadrangle), on right bank 20 ft downstream from Brown St. in Lafayette, 0.2 mi upstream from Main St. bridge, 0.3 mi downstream from Harrison Memorial Bridge, 5.1 mi downstream from Wildcat Creek, and at mile 311.9.

DRAINAGE AREA.--7,267 mi<sup>2</sup>.

PERIOD OF RECORD.--February 1901 to January 1902, March to December 1902, January to May 1903 (gage height only), October 1923 to current year. Monthly discharge only for some periods, published in WSP 1305. Gage-height records collected at present site since October 1913 are contained in reports of National Weather Service.

REVISED RECORDS.--WSP 1335: 1929, 1932-33, 1936. WSP 1505: 1950. WSP 1555: 1928(M). WSP 2109: Drainage area. WDR IN-81-1: 1979.

GAGE.--Water-stage recorder. Datum of gage is 504.14 ft above National Geodetic Vertical Datum of 1929. Prior to May 2, 1903, nonrecording gage 0.5 mi upstream at different datum. Oct. 7, 1923, to Nov. 20, 1933, nonrecording gage at same site and datum.

REMARKS.--Records fair except for estimated daily discharges, which are poor. Flow partially regulated by upstream reservoirs and power development.

EXTREMES OUTSIDE PERIOD OF RECORD.--Flood of Mar. 26, 1913, reached a stage of 32.9 ft, from floodmark determined by National Weather Service, discharge, 190,000 ft<sup>3</sup>/s.

DISCHARGE, CUBIC FEET PER SECOND  
WATER YEAR OCTOBER 2002 TO SEPTEMBER 2003  
DAILY MEAN VALUES

DAY	OCT	NOV	DEC	JAN	FEB	MAR	APR	MAY	JUN	JUL	AUG	SEP
1	1,680	1,510	1,930	4,810	2,050	e2,400	8,170	2,130	7,320	2,170	9,470	10,400
2	1,580	1,380	1,590	10,600	2,040	e2,200	5,770	2,710	6,030	2,280	8,920	26,300
3	1,540	1,490	1,680	11,100	2,110	e2,100	4,270	2,950	4,400	2,130	10,000	29,500
4	1,620	1,540	1,190	9,270	2,820	e2,000	4,120	3,630	4,150	2,060	12,200	25,700
5	1,590	1,570	1,300	7,430	3,540	e2,300	5,020	6,820	3,870	15,200	11,600	21,000
6	1,730	1,910	1,420	5,800	5,410	3,030	11,200	16,600	3,500	58,600	10,400	17,500
7	1,540	1,560	1,770	3,930	5,540	3,030	11,600	17,500	3,460	76,000	9,240	15,500
8	1,580	1,460	1,850	3,100	4,440	4,980	11,000	16,600	3,300	78,200	10,200	14,200
9	1,670	1,590	1,800	3,130	3,580	8,470	10,200	22,200	3,210	77,200	9,740	13,000
10	1,720	2,040	1,290	3,280	2,840	12,500	8,460	35,800	2,800	79,000	8,770	10,200
11	1,650	2,460	1,330	4,750	e2,300	12,800	7,360	37,100	3,000	73,200	8,100	8,690
12	1,630	2,990	1,370	5,800	e2,200	11,500	5,670	33,300	3,370	60,600	7,830	7,690
13	1,610	4,640	1,430	4,560	e2,100	9,580	5,000	30,400	4,480	49,400	7,740	7,790
14	1,530	4,340	1,240	3,480	e2,000	14,400	4,090	26,600	12,100	40,000	7,830	7,470
15	1,410	3,730	1,290	2,490	e2,100	17,600	3,810	23,900	16,300	34,300	7,770	6,560
16	1,400	3,040	1,390	2,180	e2,050	17,600	3,540	24,400	11,800	32,700	7,640	4,200
17	1,410	2,850	1,160	2,160	e2,100	17,500	3,000	21,900	9,940	28,400	7,410	3,810
18	1,670	2,250	1,350	2,460	e2,200	15,900	3,220	19,900	8,740	25,500	7,460	3,500
19	1,580	1,860	1,570	2,200	e1,900	13,100	2,820	17,600	7,580	23,600	6,990	3,300
20	1,600	1,800	1,620	2,900	e1,700	10,100	3,050	15,100	5,830	22,000	6,200	3,190
21	1,640	2,050	3,870	2,990	e1,700	8,920	2,970	13,900	4,930	22,800	5,550	3,040
22	1,530	2,120	6,930	2,890	e1,770	9,060	2,910	11,500	4,610	27,800	5,130	3,360
23	1,420	1,670	5,920	2,530	e2,250	10,600	2,590	9,700	3,780	25,900	5,540	3,530
24	1,460	1,820	4,170	2,410	e2,350	9,380	2,450	9,150	3,090	22,800	5,120	5,920
25	1,540	2,080	3,210	2,370	e2,500	7,070	2,460	8,520	2,840	18,900	4,640	9,780
26	1,600	2,180	2,620	2,070	e3,300	5,760	2,430	8,440	2,570	16,800	4,390	13,800
27	1,580	2,190	2,120	2,150	e3,400	4,800	2,390	7,970	2,330	15,800	4,450	25,800
28	1,570	1,980	1,910	1,990	e3,000	4,030	2,110	7,780	2,240	15,500	4,010	31,500
29	1,640	1,910	1,860	2,050	---	4,090	2,210	7,720	2,210	13,700	5,460	25,700
30	1,720	1,870	1,920	1,960	---	7,400	2,010	7,640	2,420	11,000	7,800	18,500
31	1,650	---	2,120	1,940	---	10,800	---	7,790	---	9,990	6,800	---
TOTAL	49,090	65,880	66,220	120,780	75,290	265,000	145,900	477,250	156,200	983,530	234,400	380,430
MEAN	1,584	2,196	2,136	3,896	2,689	8,548	4,863	15,400	5,207	31,730	7,561	12,680
MAX	1,730	4,640	6,930	11,100	5,540	17,600	11,600	37,100	16,300	79,000	12,200	31,500
MIN	1,400	1,380	1,160	1,940	1,700	2,000	2,010	2,130	2,210	2,060	4,010	3,040
CFSM	0.22	0.30	0.29	0.54	0.37	1.18	0.67	2.12	0.72	4.37	1.04	1.75
IN.	0.25	0.34	0.34	0.62	0.39	1.36	0.75	2.44	0.80	5.03	1.20	1.95

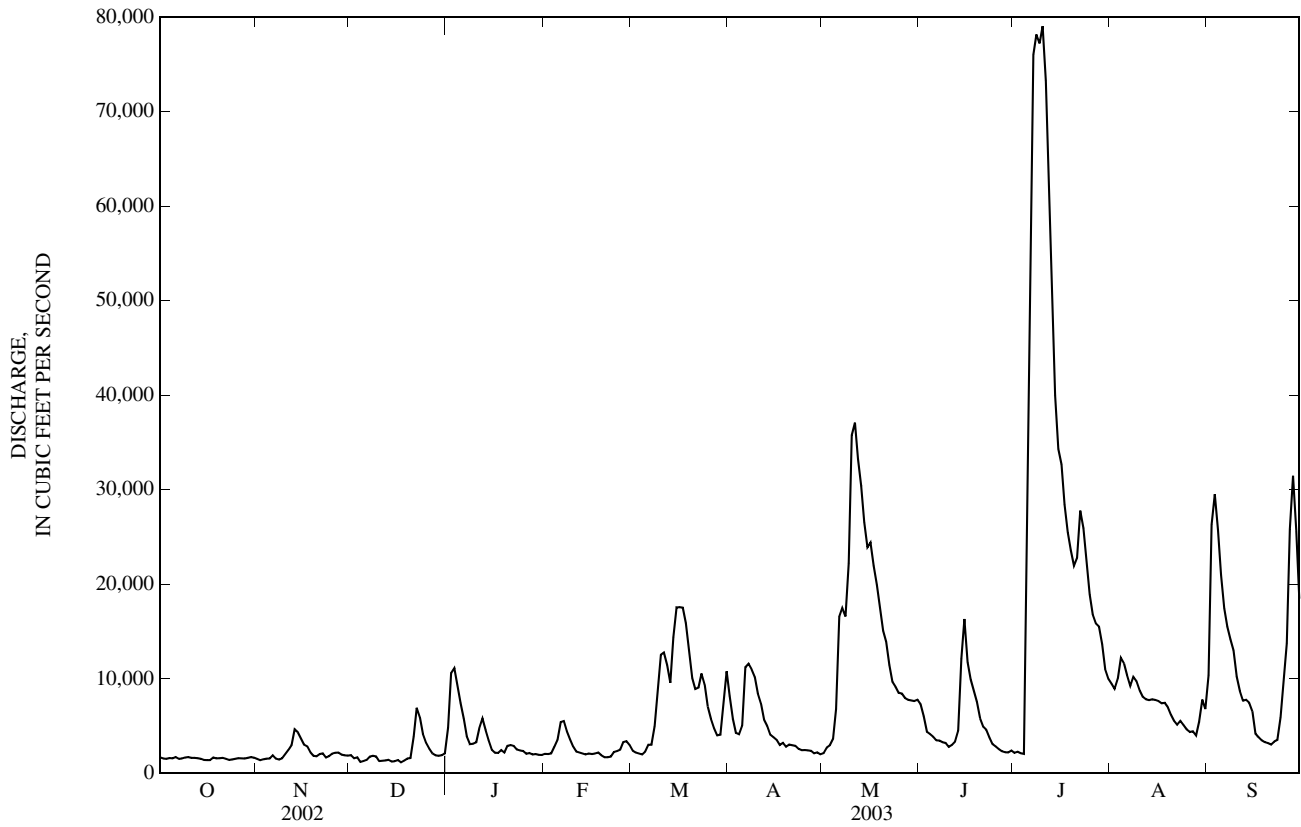
## STATISTICS OF MONTHLY MEAN DATA FOR WATER YEARS 1924 - 2003, BY WATER YEAR (WY)

MEAN	3,123	4,278	6,655	8,337	9,584	11,710	11,520	8,413	6,689	4,662	2,874	2,763
MAX	17,250	19,910	25,250	42,040	28,000	33,560	28,000	37,290	31,830	31,730	12,890	20,120
(WY)	(2002)	(1993)	(1928)	(1950)	(1959)	(1982)	(1957)	(1943)	(1958)	(2003)	(1998)	(1926)
MIN	652	828	747	735	1,232	1,663	3,135	1,460	1,029	655	484	435
(WY)	(1964)	(1965)	(1964)	(1977)	(1964)	(1941)	(1941)	(1934)	(1934)	(1936)	(1941)	(1941)

03335500 WABASH RIVER AT LAFAYETTE, IN—Continued

SUMMARY STATISTICS	FOR 2002 CALENDAR YEAR		FOR 2003 WATER YEAR		WATER YEARS 1924 - 2003	
ANNUAL TOTAL	2,490,652		3,019,970			
ANNUAL MEAN	6,824		8,274		6,700	
HIGHEST ANNUAL MEAN					12,340 1950	
LOWEST ANNUAL MEAN					1,631 1941	
HIGHEST DAILY MEAN	39,600	Feb 2	79,000	Jul 10	129,000	May 19, 1943
LOWEST DAILY MEAN	921	Sep 13	1,160	Dec 17	399	Sep 26, 1941
ANNUAL SEVEN-DAY MINIMUM	962	Sep 12	1,320	Dec 11	404	Sep 21, 1941
MAXIMUM PEAK FLOW			80,000	Jul 10	131,000	May 19, 1943
MAXIMUM PEAK STAGE			25.05	Jul 10	28.47	May 19, 1943
ANNUAL RUNOFF (CFSM)	0.94		1.14		0.92	
ANNUAL RUNOFF (INCHES)	12.75		15.46		12.53	
10 PERCENT EXCEEDS	18,800		19,300		16,000	
50 PERCENT EXCEEDS	3,160		3,780		3,650	
90 PERCENT EXCEEDS	1,400		1,590		1,170	

e Estimated





03335690 MUD PINE CREEK NEAR OXFORD, IN

LOCATION.--Lat 40°31'24", long 87°20'30", in NE<sup>1</sup>/<sub>4</sub>SE<sup>1</sup>/<sub>4</sub> sec.17, T.24 N., R.8 W., Benton County, Hydrologic Unit 05120108, (FOWLER, IN. quadrangle), on right bank 5 ft downstream from county road bridge, 0.3 mi north of Chase, 2.0 mi east of Boswell, and 5.0 mi west of Oxford.

DRAINAGE AREA.--39.4 mi<sup>2</sup>.

PERIOD OF RECORD.--June 1971 to October 2003 (discontinued).

REVISED RECORDS.--WDR IN-80-1: 1971-79 (P).

GAGE.--Water-stage recorder. Datum of gage is 718.00 ft above National Geodetic Vertical Datum of 1929.

REMARKS.--Records fair except those for Oct. 12 to Dec. 3, 2002 and estimated daily discharges, which are poor.

DISCHARGE, CUBIC FEET PER SECOND  
WATER YEAR OCTOBER 2002 TO SEPTEMBER 2003  
DAILY MEAN VALUES

DAY	OCT	NOV	DEC	JAN	FEB	MAR	APR	MAY	JUN	JUL	AUG	SEP
1	2.3	e4.5	2.9	25	e8.0	e4.7	8.8	18	41	14	14	266
2	2.2	e3.6	e2.4	18	e11	e4.7	7.2	29	33	14	12	266
3	2.2	e2.9	e2.1	14	33	e4.6	6.8	20	32	12	12	127
4	2.7	e4.3	e1.8	e11	82	e4.9	18	20	27	11	11	78
5	3.1	6.5	e1.9	e9.0	33	26	131	136	24	29	9.5	53
6	2.3	9.4	e1.9	e7.6	e16	e9.0	75	85	23	118	8.5	38
7	2.0	6.8	e2.1	e7.0	e12	14	110	126	22	272	7.5	29
8	1.8	e4.4	e1.6	e6.6	e11	54	101	300	21	112	6.7	23
9	2.0	e3.4	e1.3	46	e9.8	44	72	880	19	424	6.5	19
10	1.9	12	e1.7	44	e9.0	20	56	405	18	895	6.0	15
11	1.7	10	e1.9	35	e7.8	e11	46	274	19	277	5.2	12
12	e1.7	e3.5	2.2	e20	e7.1	14	38	161	19	243	4.5	11
13	e1.8	e4.8	2.4	e14	e6.5	18	32	113	420	145	4.1	9.0
14	e1.8	6.2	2.5	e13	e6.0	11	29	89	443	96	3.7	9.1
15	e1.9	6.9	2.1	e12	e5.4	11	28	84	168	111	3.3	8.2
16	e2.0	5.3	2.0	e12	e5.0	13	26	70	104	98	3.1	7.0
17	e2.1	e3.5	1.7	e11	7.6	16	24	62	77	65	3.3	6.2
18	3.5	e3.3	3.6	e11	8.1	14	21	54	61	219	3.3	5.8
19	5.8	e3.6	7.9	e10	6.8	15	19	48	50	113	2.4	5.8
20	4.7	4.5	8.5	e9.2	7.3	16	24	45	38	74	2.1	5.1
21	2.5	5.3	5.5	e8.8	9.7	26	22	36	33	75	2.0	5.0
22	e2.7	5.4	3.8	e8.4	29	19	18	33	30	57	1.7	12
23	e3.0	e3.4	e2.5	e8.2	36	15	16	30	26	45	1.5	11
24	e3.4	e2.7	e1.9	e7.8	15	13	17	29	24	38	1.8	9.7
25	e4.2	e2.3	e2.0	e7.8	9.5	13	19	26	21	30	1.5	9.8
26	5.4	e2.2	e1.8	e7.7	5.9	13	16	23	21	26	1.4	18
27	e3.9	e2.1	e1.6	e7.5	e5.2	12	14	21	18	23	1.2	110
28	e2.9	3.3	e1.6	e7.4	e5.0	12	14	32	17	22	1.1	61
29	7.3	4.4	e1.7	e7.4	---	9.2	14	62	16	20	56	41
30	11	4.6	36	e7.5	---	7.6	14	39	15	17	64	30
31	6.6	---	47	e7.6	---	7.8	---	73	---	15	32	---
TOTAL	102.4	145.1	159.9	421.5	407.7	472.5	1,036.8	3,423	1,880	3,710	292.9	1,300.7
MEAN	3.30	4.84	5.16	13.6	14.6	15.2	34.6	110	62.7	120	9.45	43.4
MAX	11	12	47	46	82	54	131	880	443	895	64	266
MIN	1.7	2.1	1.3	6.6	5.0	4.6	6.8	18	15	11	1.1	5.0
CFSM	0.08	0.12	0.13	0.35	0.37	0.39	0.88	2.80	1.59	3.04	0.24	1.10
IN.	0.10	0.14	0.15	0.40	0.38	0.45	0.98	3.23	1.78	3.50	0.28	1.23

STATISTICS OF MONTHLY MEAN DATA FOR WATER YEARS 1972 - 2003, BY WATER YEAR (WY)

MEAN	20.4	27.7	41.8	39.5	57.7	72.9	69.7	63.1	61.1	29.4	15.5	16.1
MAX	207	169	154	164	158	237	267	159	240	147	122	134
(WY)	(2002)	(1986)	(1991)	(1993)	(1990)	(1979)	(1994)	(1981)	(1998)	(1993)	(1981)	(1993)
MIN	0.38	0.33	0.71	0.46	3.41	6.54	7.99	8.49	2.85	0.65	0.79	0.40
(WY)	(2000)	(2000)	(2000)	(2000)	(1977)	(1981)	(2000)	(1976)	(1988)	(1988)	(1988)	(1983)

SUMMARY STATISTICS

FOR 2002 CALENDAR YEAR

FOR 2003 WATER YEAR

WATER YEARS 1972 - 2003

ANNUAL TOTAL	17,798.6	13,352.5	
ANNUAL MEAN	48.8	36.6	42.8
HIGHEST ANNUAL MEAN			93.0
LOWEST ANNUAL MEAN			16.2
HIGHEST DAILY MEAN	613	May 12	895
LOWEST DAILY MEAN	1.3	Dec 9	1.1
ANNUAL SEVEN-DAY MINIMUM	1.8	Dec 4	1.5
MAXIMUM PEAK FLOW			1,410
MAXIMUM PEAK STAGE			11.06
ANNUAL RUNOFF (CFSM)	1.24		0.93
ANNUAL RUNOFF (INCHES)	16.80		12.61
10 PERCENT EXCEEDS	118		80
50 PERCENT EXCEEDS	19		12
90 PERCENT EXCEEDS	2.3		2.1

e Estimated

