



United States Department of the Interior

FISH AND WILDLIFE SERVICE
 ECOLOGICAL SERVICES
 WYOMING FIELD OFFICE
 5353 Yellowstone Road, Suite 308A
 Cheyenne, Wyoming 82009
 Phone 307-772-2374

ENDANGERED, THREATENED, AND CANDIDATE SPECIES AND DESIGNATED CRITICAL HABITAT FOR WYOMING COUNTIES

February 2008

SYMBOLS:

- * - Water depletions and effects to water quality in the Colorado River, Little Snake River, and Green River systems may affect the species and/or its designated critical habitat in downstream reaches in other states.
- ▲ - Water depletions and effects to water quality in the Platte River system may affect the species and/or its critical habitat in downstream reaches in other states.
- © - There is designated critical habitat for the species within the county.
- E – Endangered
- T - Threatened
- X – Nonessential/Experimental Population
- C - Candidate

Species	Scientific Name	Status
ALBANY		
Black-footed Ferret	<i>Mustela nigripes</i>	E
Black-footed Ferret (Shirley Basin)	<i>Mustela nigripes</i>	X
Blowout Penstemon	<i>Penstemon haydenii</i>	E
Canada Lynx	<i>Lynx canadensis</i>	T
Interior Least Tern ▲	<i>Sternula antillarum</i>	E
Pallid Sturgeon ▲	<i>Scaphirhynchus albus</i>	E
Piping Plover ▲	<i>Charadrius melodus</i>	T
Preble's Meadow Jumping Mouse	<i>Zapus hudsonius preblei</i>	T
Preble's Meadow Jumping Mouse ©		Designated
Ute Ladies'-tresses	<i>Spiranthes diluvialis</i>	T
Western Prairie Fringed Orchid ▲	<i>Platanthera praeclara</i>	T
Whooping Crane ▲	<i>Grus americana</i>	E
Wyoming Toad	<i>Bufo baxteri</i>	E
BIG HORN		

Black-footed Ferret	<i>Mustela nigripes</i>	E
Blowout Penstemon	<i>Penstemon haydenii</i>	E
Canada Lynx	<i>Lynx canadensis</i>	T
Gray Wolf	<i>Canis lupus</i>	X
Ute Ladies'-tresses	<i>Spiranthes diluvialis</i>	T
CAMPBELL		
Black-footed Ferret	<i>Mustela nigripes</i>	E
Blowout Penstemon	<i>Penstemon haydenii</i>	E
Ute Ladies'-tresses	<i>Spiranthes diluvialis</i>	T
CARBON		
Black-footed Ferret	<i>Mustela nigripes</i>	E
Black-footed Ferret (Shirley Basin)	<i>Mustela nigripes</i>	X
Blowout Penstemon	<i>Penstemon haydenii</i>	E
Bonytail *	<i>Gila elegans</i>	E
Canada Lynx	<i>Lynx canadensis</i>	T
Colorado Pikeminnow *	<i>Ptychocheilus lucius</i>	E
Humpback Chub *	<i>Gila cypha</i>	E
Interior Least Tern ▲	<i>Sternula antillarum</i>	E
Pallid Sturgeon ▲	<i>Scaphirhynchus albus</i>	E
Piping Plover ▲	<i>Charadrius melodus</i>	T
Razorback Sucker *	<i>Xyrauchen texanus</i>	E
Ute Ladies'-tresses	<i>Spiranthes diluvialis</i>	T
Western Prairie Fringed Orchid ▲	<i>Platanthera praeclara</i>	T
Whooping Crane ▲	<i>Grus americana</i>	E
Yellow-billed Cuckoo (Western)	<i>Coccyzus americanus</i>	C
CONVERSE		
Black-footed Ferret	<i>Mustela nigripes</i>	E
Blowout Penstemon	<i>Penstemon haydenii</i>	E
Interior Least Tern ▲	<i>Sternula antillarum</i>	E
Pallid Sturgeon ▲	<i>Scaphirhynchus albus</i>	E
Piping Plover ▲	<i>Charadrius melodus</i>	T
Preble's Meadow Jumping Mouse	<i>Zapus hudsonius preblei</i>	T
Preble's Meadow Jumping Mouse ©		Designated
Ute Ladies'-tresses	<i>Spiranthes diluvialis</i>	T
Western Prairie Fringed Orchid ▲	<i>Platanthera praeclara</i>	T
Whooping Crane ▲	<i>Grus americana</i>	E
CROOK		
Black-footed Ferret	<i>Mustela nigripes</i>	E
Blowout Penstemon	<i>Penstemon haydenii</i>	E
Ute Ladies'-tresses	<i>Spiranthes diluvialis</i>	T
FREMONT		
Black-footed Ferret	<i>Mustela nigripes</i>	E
Blowout Penstemon	<i>Penstemon haydenii</i>	E
Bonytail *	<i>Gila elegans</i>	E

Canada Lynx	<i>Lynx canadensis</i>	T
Colorado Pikeminnow *	<i>Ptychocheilus lucius</i>	E
Humpback Chub *	<i>Gila cypha</i>	E
Desert Yellowhead	<i>Yermo xanthocephalus</i>	T
Desert Yellowhead ©		Designated
Gray Wolf	<i>Canis lupus</i>	X
Interior Least Tern ▲	<i>Sternula antillarum</i>	E
Pallid Sturgeon ▲	<i>Scaphirhynchus albus</i>	E
Piping Plover ▲	<i>Charadrius melodus</i>	T
Razorback Sucker *	<i>Xyrauchen texanus</i>	E
Ute Ladies'-tresses	<i>Spiranthes diluvialis</i>	T
Western Prairie Fringed Orchid ▲	<i>Platanthera praeclara</i>	T
Whooping Crane ▲	<i>Grus americana</i>	E
Yellow-billed Cuckoo (Western)	<i>Coccyzus americanus</i>	C
GOSHEN		
Black-footed Ferret	<i>Mustela nigripes</i>	E
Blowout Penstemon	<i>Penstemon haydenii</i>	E
Colorado Butterfly Plant	<i>Gaura neomexicana coloradensis</i>	T
Interior Least Tern ▲	<i>Sternula antillarum</i>	E
Pallid Sturgeon ▲	<i>Scaphirhynchus albus</i>	E
Piping Plover ▲	<i>Charadrius melodus</i>	T
Preble's Meadow Jumping Mouse	<i>Zapus hudsonius preblei</i>	T
Ute Ladies'-tresses	<i>Spiranthes diluvialis</i>	T
Western Prairie Fringed Orchid ▲	<i>Platanthera praeclara</i>	T
Whooping Crane ▲	<i>Grus americana</i>	E
HOT SPRINGS		
Black-footed Ferret	<i>Mustela nigripes</i>	E
Blowout Penstemon	<i>Penstemon haydenii</i>	E
Canada Lynx	<i>Lynx canadensis</i>	T
Gray Wolf	<i>Canis lupus</i>	X
Ute Ladies'-tresses	<i>Spiranthes diluvialis</i>	T
JOHNSON		
Black-footed Ferret	<i>Mustela nigripes</i>	E
Blowout Penstemon	<i>Penstemon haydenii</i>	E
Canada Lynx	<i>Lynx canadensis</i>	T
Ute Ladies'-tresses	<i>Spiranthes diluvialis</i>	T
LARAMIE		
Black-footed Ferret	<i>Mustela nigripes</i>	E
Blowout Penstemon	<i>Penstemon haydenii</i>	E
Colorado Butterfly Plant	<i>Gaura neomexicana coloradensis</i>	T
Colorado Butterfly Plant ©		Designated
Interior Least Tern ▲	<i>Sternula antillarum</i>	E
Pallid Sturgeon ▲	<i>Scaphirhynchus albus</i>	E
Piping Plover ▲	<i>Charadrius melodus</i>	T

Preble's Meadow Jumping Mouse	<i>Zapus hudsonius preblei</i>	T
Preble's Meadow Jumping Mouse ©		Designated
Ute Ladies'-tresses	<i>Spiranthes diluvialis</i>	T
Western Prairie Fringed Orchid ▲	<i>Platanthera praeclara</i>	T
Whooping Crane ▲	<i>Grus americana</i>	E
LINCOLN		
Black-footed Ferret	<i>Mustela nigripes</i>	E
Blowout Penstemon	<i>Penstemon haydenii</i>	E
Bonytail *	<i>Gila elegans</i>	E
Canada Lynx	<i>Lynx canadensis</i>	T
Colorado Pikeminnow *	<i>Ptychocheilus lucius</i>	E
Gray Wolf	<i>Canis lupus</i>	X
Humpback Chub *	<i>Gila cypha</i>	E
Razorback Sucker *	<i>Xyrauchen texanus</i>	E
Ute Ladies'-tresses	<i>Spiranthes diluvialis</i>	T
Yellow-billed Cuckoo (Western)	<i>Coccyzus americanus</i>	C
NATRONA		
Black-footed Ferret	<i>Mustela nigripes</i>	E
Black-footed Ferret (Shirley Basin)	<i>Mustela nigripes</i>	X
Blowout Penstemon	<i>Penstemon haydenii</i>	E
Interior Least Tern ▲	<i>Sternula antillarum</i>	E
Pallid Sturgeon ▲	<i>Scaphirhynchus albus</i>	E
Piping Plover ▲	<i>Charadrius melodus</i>	T
Ute Ladies'-tresses	<i>Spiranthes diluvialis</i>	T
Western Prairie Fringed Orchid ▲	<i>Platanthera praeclara</i>	T
Whooping Crane ▲	<i>Grus americana</i>	E
NIOBRARA		
Black-footed Ferret	<i>Mustela nigripes</i>	E
Interior Least Tern ▲	<i>Sternula antillarum</i>	E
Pallid Sturgeon ▲	<i>Scaphirhynchus albus</i>	E
Piping Plover ▲	<i>Charadrius melodus</i>	T
Ute Ladies'-tresses	<i>Spiranthes diluvialis</i>	T
Western Prairie Fringed Orchid ▲	<i>Platanthera praeclara</i>	T
Whooping Crane ▲	<i>Grus americana</i>	E
PARK		
Black-footed Ferret	<i>Mustela nigripes</i>	E
Blowout Penstemon	<i>Penstemon haydenii</i>	E
Canada Lynx	<i>Lynx canadensis</i>	T
Gray Wolf	<i>Canis lupus</i>	X
Ute Ladies'-tresses	<i>Spiranthes diluvialis</i>	T
Yellow-billed Cuckoo (Western)	<i>Coccyzus americanus</i>	C
PLATTE		
Black-footed Ferret	<i>Mustela nigripes</i>	E
Blowout Penstemon	<i>Penstemon haydenii</i>	E

Colorado Butterfly Plant	<i>Gaura neomexicana coloradensis</i>	T
Colorado Butterfly Plant ©		Designated
Interior Least Tern ▲	<i>Sternula antillarum</i>	E
Pallid Sturgeon ▲	<i>Scaphirhynchus albus</i>	E
Piping Plover ▲	<i>Charadrius melodus</i>	T
Preble's Meadow Jumping Mouse	<i>Zapus hudsonius preblei</i>	T
Preble's Meadow Jumping Mouse ©		Designated
Ute Ladies'-tresses	<i>Spiranthes diluvialis</i>	T
Western Prairie Fringed Orchid ▲	<i>Platanthera praeclara</i>	T
Whooping Crane ▲	<i>Grus americana</i>	E
SHERIDAN		
Black-footed Ferret	<i>Mustela nigripes</i>	E
Blowout Penstemon	<i>Penstemon haydenii</i>	E
Canada Lynx	<i>Lynx canadensis</i>	T
Ute Ladies'-tresses	<i>Spiranthes diluvialis</i>	T
SUBLETTE		
Black-footed Ferret	<i>Mustela nigripes</i>	E
Blowout Penstemon	<i>Penstemon haydenii</i>	E
Bonytail *	<i>Gila elegans</i>	E
Canada Lynx	<i>Lynx canadensis</i>	T
Colorado Pikeminnow *	<i>Ptychocheilus lucius</i>	E
Gray Wolf	<i>Canis lupus</i>	X
Humpback Chub *	<i>Gila cypha</i>	E
Interior Least Tern ▲	<i>Sternula antillarum</i>	E
Kendall Warm Springs Dace	<i>Rhinichthys osculus thermalis</i>	E
Pallid Sturgeon ▲	<i>Scaphirhynchus albus</i>	E
Piping Plover ▲	<i>Charadrius melodus</i>	T
Razorback Sucker *	<i>Xyrauchen texanus</i>	E
Ute Ladies'-tresses	<i>Spiranthes diluvialis</i>	T
Western Prairie Fringed Orchid ▲	<i>Platanthera praeclara</i>	T
Whooping Crane ▲	<i>Grus americana</i>	E
Yellow-billed Cuckoo (Western)	<i>Coccyzus americanus</i>	C
SWEETWATER		
Black-footed Ferret	<i>Mustela nigripes</i>	E
Blowout Penstemon	<i>Penstemon haydenii</i>	E
Bonytail *	<i>Gila elegans</i>	E
Colorado Pikeminnow *	<i>Ptychocheilus lucius</i>	E
Humpback Chub *	<i>Gila cypha</i>	E
Razorback Sucker *	<i>Xyrauchen texanus</i>	E
Ute Ladies'-tresses	<i>Spiranthes diluvialis</i>	T
Yellow-billed Cuckoo (Western)	<i>Coccyzus americanus</i>	C
TETON		
Black-footed Ferret	<i>Mustela nigripes</i>	E
Blowout Penstemon	<i>Penstemon haydenii</i>	E

Canada Lynx	<i>Lynx canadensis</i>	T
Gray Wolf	<i>Canis lupus</i>	X
Yellow-billed Cuckoo (Western)	<i>Coccyzus americanus</i>	C
UINTA		
Black-footed Ferret	<i>Mustela nigripes</i>	E
Blowout Penstemon	<i>Penstemon haydenii</i>	E
Bonytail *	<i>Gila elegans</i>	E
Colorado Pikeminnow *	<i>Ptychocheilus lucius</i>	E
Humpback Chub *	<i>Gila cypha</i>	E
Razorback Sucker *	<i>Xyrauchen texanus</i>	E
Ute Ladies'-tresses	<i>Spiranthes diluvialis</i>	T
Yellow-billed Cuckoo (Western)	<i>Coccyzus americanus</i>	C
WASHAKIE		
Black-footed Ferret	<i>Mustela nigripes</i>	E
Blowout Penstemon	<i>Penstemon haydenii</i>	E
Canada Lynx	<i>Lynx canadensis</i>	T
Ute Ladies'-tresses	<i>Spiranthes diluvialis</i>	T
WESTON		
Black-footed Ferret	<i>Mustela nigripes</i>	E
Blowout Penstemon	<i>Penstemon haydenii</i>	E
Ute Ladies'-tresses	<i>Spiranthes diluvialis</i>	T

U.S. Fish and Wildlife Service (Service) biologists have used the best scientific information available to formulate this list, which is updated annually or soon after listing changes occur. The purpose of a species list is to help provide information on endangered, threatened, and candidate species that may be present in a **project action area** (see description on page 8).

A current version of this species list fulfills the Service's requirement, under section 7(c) of the Endangered Species Act of 1973, as amended (Act) (16 U.S.C. 1531 *et seq.*), to provide a list of endangered and threatened species upon request for federal actions and National Environmental Policy Act (NEPA) compliance. Federal agency responsibilities under section 7 of the Act, including an outline of the section 7 consultation process and information needed in a biological assessment, may be found at the following link: <http://endangered.fws.gov/consultations/index.html>. Non-Federal entities who believe that their projects or activities may affect species listed as endangered or threatened may contact the Service regarding the potential need for a section 10 permit under the Act.

Candidate species are those species for which the Service has sufficient information to propose for listing as threatened or endangered under the Act. Conservation measures for candidate species are voluntary but recommended. Protection provided to candidate species now may preclude possible listing in the future. The Service's Wyoming Ecological Services office would appreciate receiving information as to the current status of candidate species within the proposed project area.

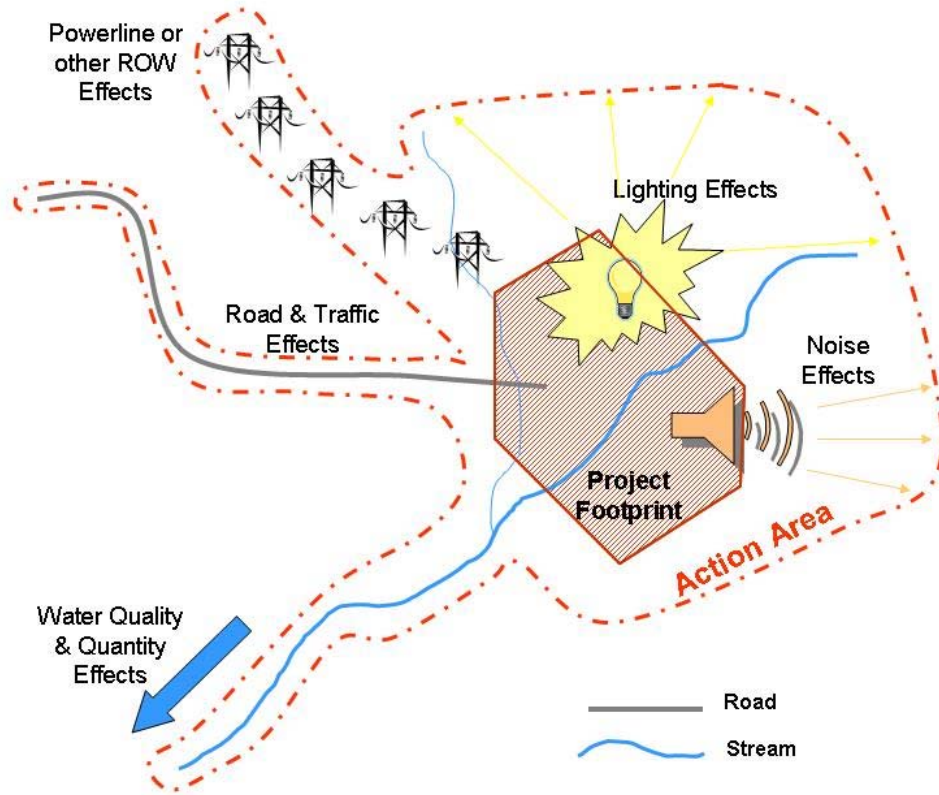
Measures may also be required for the project to protect migratory birds under the Migratory Bird Treaty Act, 16 U.S.C. 703 and the Bald and Golden Eagle Protection Act, 16 U.S.C. 668. Wetlands are afforded protection under Executive Orders 11990 (wetland protection) and 11988 (floodplain management), as well as section 404 of the Clean Water Act. Additional information that may be important for project planning concerning other important fish and wildlife resources is available from the Service's Wyoming Ecological Services Field Office.

For additional information, please call the Wyoming Ecological Services Field Office at 307-772-2374.

General Location Information for Endangered, Threatened, or Candidates Species and Designated Critical Habitat in Wyoming

Species	Where are they likely to occur?
Black-footed Ferret	Prairie dog (<i>Cynomys</i> sp.) colonies
Blowout Penstemon	Sand blowouts or dunes
Bonytail	Colorado River, Little Snake River, and Green River systems downstream of Wyoming
Canada Lynx	Montane forests
Colorado Pikeminnow	Colorado River, Little Snake River, and Green River systems downstream of Wyoming
Colorado Butterfly Plant	Wet meadows and riparian areas
Colorado Butterfly Plant Critical Habitat	Specific wet meadows and riparian areas in Laramie and Platte Counties (see 50 CFR 17.96(a))
Desert Yellowhead	Beaver Rim, Fremont County
Desert Yellowhead Critical Habitat	Beaver Rim, Fremont County (see 50 CFR 17.96(a))
Gray Wolf	Greater Yellowstone Ecosystem
Humpback Chub	Colorado River, Little Snake River, and Green River systems downstream of Wyoming
Interior Least Tern	Platte River system downstream of Wyoming
Kendall Warm Springs Dace	Kendall Warm Springs, Sublette County
Pallid Sturgeon	Platte River system downstream of Wyoming
Piping Plover	Platte River system downstream of Wyoming
Preble's Meadow Jumping Mouse	Riparian habitats east of Laramie Mountains. and south of the North Platte River
Preble's Meadow Jumping Mouse Critical Habitat	Specific riparian habitats along Chugwater, Cottonwood, and Lodgepole Creeks and some tributaries (see 50 CFR 17.95(a))
Razorback Sucker	Colorado River, Little Snake River, and Green River systems downstream of Wyoming
Ute Ladies'-tresses	Seasonally moist soils and wet meadows below 7000 feet
Western Prairie Fringed Orchid	Platte River system downstream of Wyoming
Whooping Crane	Platte River system downstream of Wyoming
Wyoming Toad	Laramie River valley
Yellow-billed Cuckoo (Western)	Riparian areas west of Continental Divide

A **Project Action Area** refers to the area directly or indirectly affected by the proposed action. This area will usually be larger than the project footprint. To determine your project action area, mark the project footprint on a topographic map.



Identify the range of impacts such as:

1. Ground disturbance
2. Changes in water quality and quantity (both surface and underground water)
3. Air quality
4. Lighting effects
5. Noise disturbance

Draw a line around all of the affected areas. This is the project action area. Send us a copy of the map when you initiate consultation. Example: In the diagram on this page, the project affects water quality or quantity downstream and has road, traffic, and power line effects.