

In-Water Work Period

Oregon Department of Fish and Wildlife

- A time period during the year when work in waterways is allowed in conjunction with the State Removal/Fill Permit and/or the Federal Dredge Fill Permit.

Sun	Mon
1	2
8	9

Federal Endangered Species Act

US Fish and Wildlife Service,
National Marine Fisheries Service

- Listed threatened or endangered species inhabit the project site.



State and local land-use plans

Coastal Zone Management Certification

Oregon Department of Land Conservation and Development

- Depends on the coastal-zone location and nature of your project.



Local Land Use Plan

Local Government Planning and Development Department

- Depends on the location and nature of your project.



State agencies are working to consolidate permit processes so that property owners will be able to get many of them with one-stop shopping. Proposed changes to make that happen will be presented to the 2007 legislature.

Contacts

Oregon Department of State Lands

General information about all agency activities with the Removal-Fill Program and Wetlands:

www.oregonstatelands.us

Direct link to removal-fill permit applications:

www.statelandsonline.com

Western Region Office — Salem

(Serving Oregon west of the Cascades)
(503) 378-3805

Eastern Region Office — Bend

(Serving Oregon east of the Cascades)
(541) 388-6112

Oregon Department of Environmental Quality

(503) 229-5696 or (800) 452-4011

www.deq.state.or.us/wq

Oregon Department of Fish and Wildlife

(503) 947-6000 or (800) 720-6339

www.dfw.state.or.us

Oregon Department of Geology and Mineral Industries

(541) 967-2039

www.oregon.gov/dogami/index.shtml

Oregon Department of Land Conservation and Development

(503) 373-0050

www.oregon.gov/LCD/ocncstserv.shtml#Ocean_Costal_Serv_Division

Oregon Department of Water Resources

(503) 986-0900

www.wrd.state.or.us/

Oregon Parks and Recreation Department

(800) 551-6949

www.oregon.gov/OPRD/RULES/index.shtml

National Marine Fisheries Service, Oregon State Habitat Office

(503) 231-2202

www.nwr.noaa.gov/1habweb/

U.S. Army Corps of Engineers

(503) 808-5150

www.nwp.usace.army.mil

U.S. Fish and Wildlife Service, Pacific Regional Office

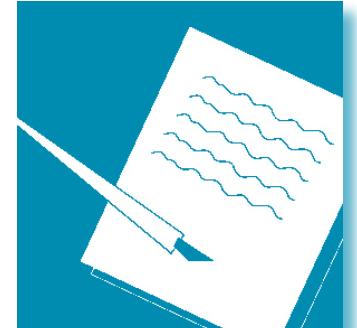
(503) 231-6828

www.fws.gov/pacific

Before I use this



I may need this



Information provided by

Oregon Department of State Lands

Oregon Department of Environmental Quality

Oregon Department of Land Conservation and Development

Oregon Department of Geological and Mineral Industries

Oregon Department of Fish and Wildlife

Oregon Department of Water Resources

Oregon Parks and Recreation Department

Oregon's natural resources

In Oregon, protecting our natural resources means a variety of permits are required for residential, industrial, commercial, and public works projects in or near water, streams, rivers, waterways and wetlands. Natural-resource regulations include federal, state, and local requirements. The primary goals of these requirements are to avoid, reduce or compensate for the impacts to our state's natural resources.

The following overview provides general information for the most common types of permits and requirements for land and water development practices. Here you'll find **examples of activities requiring various permits, reviews and requirements**, and the agencies or levels of government with jurisdiction for them.

Permits

Removal/Fill Permit

Oregon Department of State Lands

- A project that includes the removal or filling of material in a wetland or waterway.



Federal Dredge Fill Permit

U.S. Army Corps of Engineers

- A project that includes the dredging or filling of material in a wetland or waterway. (Both state and federal requirements may apply.)



Stormwater Permit

Oregon Department of Environmental Quality

- Construction activities that disturb an acre or more, certain industries, and municipal outfalls and water conveyance systems.



State Lands Proprietary Authorization

Oregon Department of State Lands

- Removal, disturbance or construction work on the bed or banks of state-owned waterways.



Local Government Grading Permits

City or County Planning Department

- Land clearing and grading work.



Water Use Authorization

Water Resources Department

- Developing new water sources from surface water, groundwater, stored water; or transfer of water rights.



In-Water Blasting Permit

Oregon Department of Fish and Wildlife

- Using explosives in or near waterways, streams or rivers.



Ocean Shore Permit

Oregon Parks and Recreation Department

- Project is in the ocean shore zone.



Scenic Waterways Permit

Oregon Department of State Lands;
Oregon Parks and Recreation Department

- Any development activities within a designated state scenic waterway.



Mineral Land Operating Permit

Oregon Department of Geology & Mineral Industries

- Project to conduct commercial mining activity more than 5,000 yards of material.



Scientific Take Permit

Oregon Department of Fish and Wildlife

- For salvaging fish from a project site.



Other requirements

Water Quality Certification

Oregon Department of Environmental Quality

- A project that includes the dredging or filling of material in a wetland or waterway.



Archeological Review

Oregon Parks and Recreation Department; State Historic Preservation Office

- Depends upon the location of your project.



Fish Passage Review

Oregon Department of Fish and Wildlife

- Placing, modifying or abandoning obstructions in waterways.



Habitat Mitigation Review

Oregon Department of Fish and Wildlife

- Disturbance to fish and wildlife habitat.

