



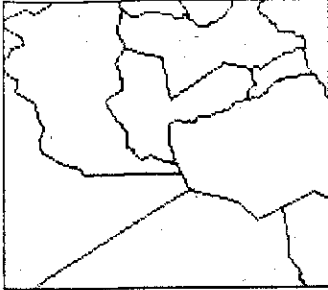
Honolulu, HI Metro

Browse Places

**Search** Help

--My Saved Places--

## Area Overview - Honolulu, HI Metro



Honolulu, HI Metro is a Metropolitan Area with total population of 876,156.

Honolulu, HI Metro has the highest *Pct. non-Hispanic multiracial population* of any Metropolitan Area. It ranks 10th lowest on *Homeownership rate*. It has the 4th highest *Pct. housing units with no bedrooms*. It ranks 6th lowest on

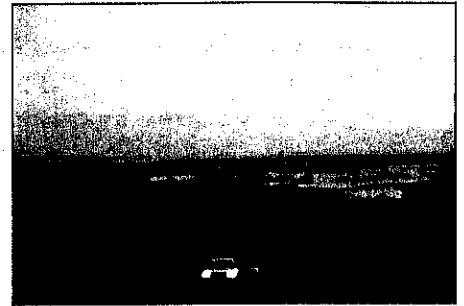
*Pct. of establishments in mining*. It has the highest *Pct. of owner-occupied home purchase mortgages to Asians*. It has the 8th lowest *Pct. employment in manufacturing*.

Tools for Honolulu, HI Metro:

- Maps
- Charts
- Rankings
- Key Indicators
- Save This Place

How to use Area Overview

Welcome to the Area Overview on Honolulu, HI Metro. Use this as your starting point to the various tools of DataPlace. Customize these to fit your needs and data by visiting My DataPlace



Aiea, HI

**Key data on Honolulu, HI Metro**

[see more key indicators](#)

**Population, total and by age**

**Histograms compare each Metropolitan Area in USA**

Metric	Value	Tools
Total population (2000)	876,156	Chart   Map   Rankings
Population density (people per square mile) (2000)	1,461	Chart   Map   Rankings
Pct. population under 18 years old (2000)	23.7%	Chart   Map   Rankings
Pct. population 65 years old and over (2000)	13.5%	Chart   Map   Rankings

**Population by race/ethnicity (2000 def.)**

Metric	Value	Tools
Pct. non-Hispanic White alone population (2000)	20%	Chart   Map   Rankings
Pct. non-Hispanic Black/African American alone population (2000)	2.2%	Chart   Map   Rankings
Pct. non-Hisp. Asian, Hawaiian and Pacific Islander alone pop. (2000)	53.8%	Chart   Map   Rankings
Pct. non-Hispanic American Indian/Alaska Native alone population (2000)	0.2%	Chart   Map   Rankings
Pct. non-Hispanic other race alone population (2000)	0.2%	Chart   Map   Rankings
Pct. non-Hispanic multiracial population (2000)	17%	Chart   Map   Rankings
Pct. Hispanic/Latino population (2000)	6.7%	Chart   Map   Rankings

**Household size and type**

Total households (2000)	286,731	Chart   Map   Rankings
-------------------------	---------	------------------------

**Housing Documents**

- Opportunities for County Government and the Affordable Housing Challenge**  
June 2005 | Center for Sustainable Communities, National Association of Counties
- The Daily Message**  
July 17, 2001 | HUD
- Discrimination in Metropolitan Housing Markets: Phase 2 - Asians and Pacific Islanders**  
July 1, 2003 | Urban Institute
- Intergenerational Wealth Transfer and Its Impact on Housing;**  
September 13, 2003 | Harvard Joint Center for Housing Studies

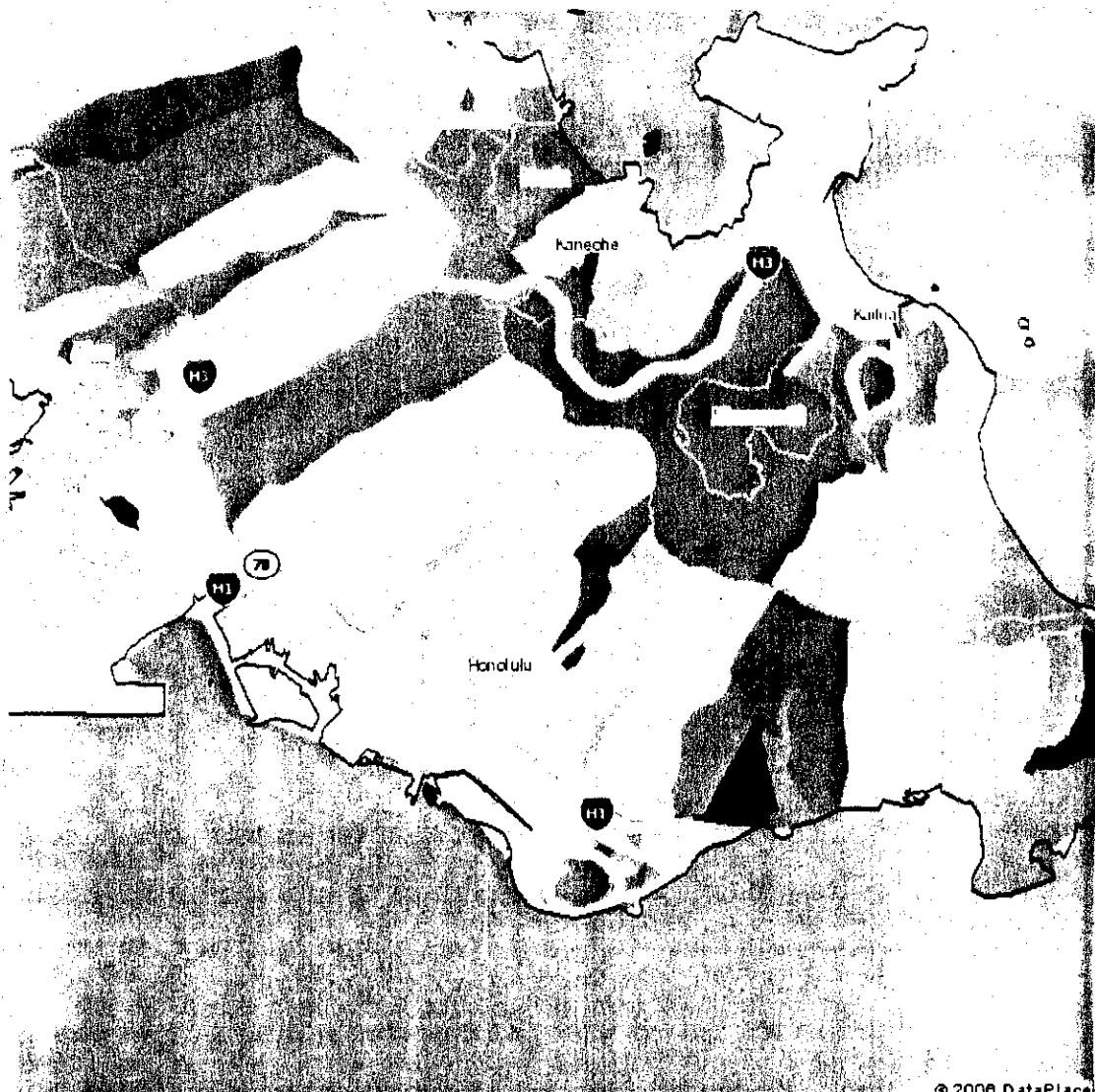
**Data Sources**

- Decennial Census, Summary File 3 sample data (U.S. Census Bureau)
- Comprehensive Housing Affordability Strategy special tabulation (U.S. Census Bureau)
- Individual Tax Return Summary Data (Internal Revenue Service)
- Home Mortgage Disclosure Act (Federal Financial Institutions Examination Council)

## County and Zip Business Patterns (U.S. Census Bureau)

Average household size (2000)	2.9	Chart   Map   Rankings
Pct. married-couple hhlds. with own children under 18 years old (2000)	25.3%	Chart   Map   Rankings
Pct. single-parent-headed hhlds. with own children under 18 years (2000)	7%	Chart   Map   Rankings
Pct. family households without own children under 18 years old (2000)	40%	Chart   Map   Rankings
Pct. nonfamily households (2000)	27.8%	Chart   Map   Rankings
<b>Education</b>		
Pct. persons 25+ yrs. old with no high school diploma or GED (2000)	15.2%	Chart   Map   Rankings
Pct. pers. 25+ yrs. old with a bachelors or graduate/prof. degree (2000)	27.9%	Chart   Map   Rankings
<b>Income/employment of residents</b>		
Median household income last yr (\$) (2000)	\$51,914	Chart   Map   Rankings
Poverty rate (2000)	9.9%	Chart   Map   Rankings
Pct. pop. 16 years old and over who are employed (2000)	61%	Chart   Map   Rankings
Unemployment rate (2000)	6.2%	Chart   Map   Rankings
<b>Income/credits for tax filers</b>		
Average Adjusted Gross Income (2002)	\$43,247	Chart   Map   Rankings
Pct. of low-income returns that receive EITC (2002)	23.7%	Chart   Map   Rankings
Average dollar amount received from EITC (2002)	\$1,558	Chart   Map   Rankings
<b>Economy</b>		
Total number of establishments (2002)	20,952	Chart   Map   Rankings
Number of establishments per 1,000 population (2002)	24	Chart   Map   Rankings
Estimated employment (2002)	317,533	Chart   Map   Rankings
Estimated employment per 1,000 population (2002)	362	Chart   Map   Rankings
<b>Housing</b>		
Total housing units (2000)	315,988	Chart   Map   Rankings
Median year structure built (2000)	1972	Chart   Map   Rankings
Pct. housing units in single-family detached	44.9%	Chart   Map

Map of Homeownership rate in 2000 in Honolulu CDP, HI



© 2006 DataPlace



Browse Places

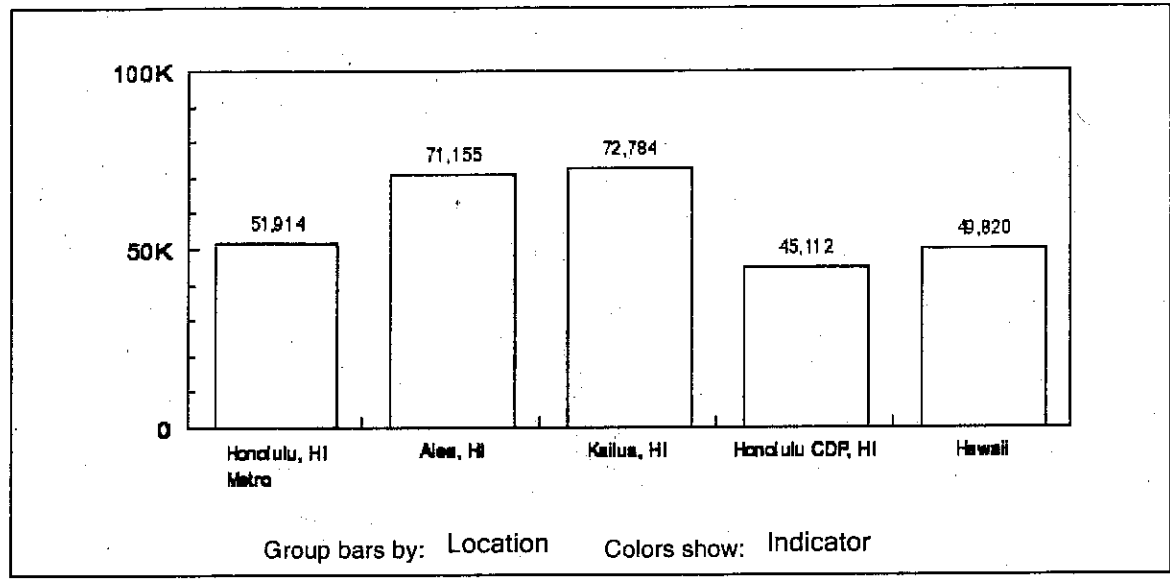
--My Saved Places--

Help

Bar Chart Scatterplot

# Median household income last yr (\$) in 2000 in Honolulu, HI Metro, Aiea, HI, Kailua, HI, Honolulu CDP, HI, and Hawaii

My Indicators	Honolulu, HI Metro	Aiea, HI	Kailua, HI	Honolulu CDP, HI	Hawaii
	2000	2000	2000	2000	
<input checked="" type="checkbox"/> Median household income last yr (\$)	\$51,914	\$71,155	\$72,784	\$45,112	\$49,820



**How to use Charts**  
 You can customize this page with your choice of places, indicators, and timeframes. Add places by typing them in the box top of the page. Add indicators using the box below. Add timeframes using the box below.

**Choose data to show**  
 You can select data to display here one of these three methods:

**Pick from this list**  
[Click here](#)

**Search for an indicator**

**Browse by topic**  
[All Topics](#)

**Chart Tools**  
 Add period to chart: 1990

**Data Sources**  
 Decennial Census, Summary File sample data (U.S. Census Bureau)



Browse Places

--My Saved Places--

Help

## Housing Indicators for Aiea, HI, Kailua, HI, Honolulu CDP, HI, and Hawaii

Housing Indicator	Aiea, HI	Kailua, HI	Honolulu CDP, HI	Hawaii	
<b>Total housing units</b>					Chart all
<input type="radio"/> Total housing units (2000)	2,831	12,770	158,659	460,542	Compare
<b>Vacant housing</b>					Chart all
<input type="radio"/> Rental vacancy rate (2000)	3.5%	4.7%	10.3%	8.2%	Compare
<input type="radio"/> Homeowner vacancy rate (2000)	0.4%	0.9%	2.0%	1.9%	Compare
<input type="radio"/> Vacancy rate (2000)	2.6%	4.4%	11.6%	12.4%	Compare
<b>Homeownership rates, total &amp; by race</b>					Chart all
<input type="radio"/> Homeownership rate (2000)	73.1%	69.8%	46.9%	56.5%	Compare
<input type="radio"/> Homeownership rate for hhlds. with income 0 to 80% of area median (2000)	56.1%	45.1%	27.4%	36.9%	Compare
<input type="radio"/> Homeownership rate for non-Hispanic White households (2000)	48.6%	67.2%	39.9%	49.3%	Compare
<input type="radio"/> Homeownership rate for Black/African American households (2000)	26.5%	22.8%	7.0%	17.1%	Compare
<input type="radio"/> Homeownership rate for Asian, Hawaiian and Pacific Islander hhlds (2000)	85.5%	82.2%	54.2%	65.8%	Compare
<input type="radio"/> Homeownership rate for American Indian/Alaska Native households (2000)	0.0%	46.2%	27.4%	30.4%	Compare
<input type="radio"/> Homeownership rate for Hispanic households (2000)	39.1%	52.3%	19.2%	36.1%	Compare
<b>Housing stock (structure)</b>					Chart all
<input type="radio"/> Pct. housing units in single-family detached homes (2000)	86.0%	72.3%	31.9%	52.0%	Compare
<input type="radio"/> Pct. housing units in single-family attached homes (2000)	6.9%	7.4%	7.3%	8.3%	Compare
<input type="radio"/> Pct. housing units in structures with 2 to 4 units (2000)	3.0%	5.0%	6.7%	6.9%	Compare
<input type="radio"/> Pct. housing units in structures with 5 to 9 units (2000)	0.7%	3.0%	6.1%	6.7%	Compare
<input type="radio"/> Pct. housing units in structures with 10 to 19 units (2000)	0.0%	2.8%	6.7%	5.0%	Compare
<input type="radio"/> Pct. housing units in structures with 20 or more units (2000)	2.9%	9.3%	41.0%	20.8%	Compare
<input type="radio"/> Pct. housing units in mobile homes, trailers, or other structures (2000)	0.5%	0.1%	0.2%	0.3%	Compare
<b>Housing Stock (age)</b>					Chart all
	Aiea, HI	Kailua, HI	Honolulu CDP, HI	Hawaii	

How to use Key Indicators

This page shows a selected **subset** of indicators available on DataPlace.

You can choose a different collection from pulldown below. click any value to see a chart or click "Chart" or "Chart all" to compare charts.

You can also type new places at the top to add more columns to this page.

Key Indicator Tools

Choose a collection to show:  
**Housing**

Clear recent places

Save this page to My DataPlace

Data Sources

Decennial Census, Summary File 3 sample data (U.S. Census Bureau)

Comprehensive Housing Affordability Strategy special tabulation (U.S. Census Bureau)

Multifamily Assistance and Section 8 Contracts (U.S. Dept. of Housing and Urban Development)



Aiea, HI

[Browse Places](#)  [Help](#)[--My Saved Places--](#)

## Rank of each Place within USA in 2000

Rank	Place	Median household income last yr (\$) 2000 ↓
1,291	Woodloch, TX	\$71,250
1,292	Lincolnwood, IL	\$71,234
1,293	Centreville, VA	\$71,232
1,294	Ramblewood, NJ	\$71,230
1,295	Alpharetta, GA	\$71,207
1,296	Allentown, NJ	\$71,193
1,297	Nanuet, NY	\$71,178
1,298	Franklin, MA	\$71,174
1,299	South Farmingdale, NY	\$71,168
1,300	Upper Providence Township, PA	\$71,166
1,301	Aiea, HI	\$71,155
1,302	St. James, NY	\$71,144
1,303	Clinton, MD	\$71,139
1,304	Sherwood, OH	\$71,127
1,305	East Islip, NY	\$71,106
1,306	Swampscott, MA	\$71,089
1,307	Riverdale, NJ	\$71,083
1,308	Three Lakes, WA	\$71,080
1,309	Apex, NC	\$71,052
1,310	Westcreek, CO	\$71,042
1,311	Atlantis, FL	\$71,019
1,312	Stony Point, NY	\$71,017
1,313	Sun Valley, ID	\$71,000
1,314	Aurora, OH	\$70,998
1,315	Rowlett, TX	\$70,947
1,316	Beverly Hills, CA	\$70,945
1,317	Hillsboro Pines, FL	\$70,938
1,318	Carle Place, NY	\$70,938

### How to use Rankings

This page shows how the places you have picked rank among their peers.

Click a column heading to change the sort order. Type a different place name at the top to find it in the list. Use "Modify Rankings" to change what is ranked.

Click a place name to see the Area Overview about that place.

### Choose data to show

You can select data to display here using one of these three methods:

#### Pick from this list

[Click here](#)

#### Search for an Indicator

#### Browse by topic

[All Topics](#)  
[Housing](#)  
[Income / Employment](#)  
[Mortgage Lending](#)  
[Social / Demographic](#)

### Modify Rankings

#### Location Type

Show this timeframe: [--Year--](#)

With minimum population in 2000:

[--No minimum--](#)

Places within **USA**

[< Choose a different boundary](#)

### Data Sources

Decennial Census, Summary File 3 sample data (U.S. Census Bureau)