

# Education Programs



## Who do we serve?

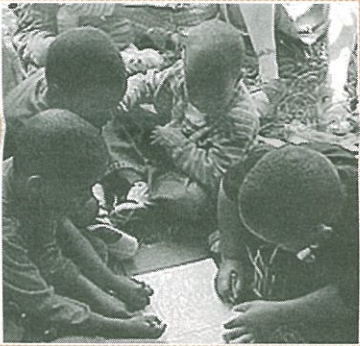
Any organized group such as schools (K-12), scouts, university classes, organizations, and preschools.

## What do we provide?

Park rangers lead a variety of free, one to three-hour long programs throughout the park. Organized groups can choose from a variety of experiences such as hiking on marked trails to the top of Mount Baldy, exploring the Miller Woods oak savannas, following in a fur trader's footsteps, or helping feed the Chellberg Farm animals. Hands-on programs allow students to explore and learn in their national park. The programs help teachers meet state content standards.

## How do you reserve a ranger-led program?

Call 219-926-7561, x243, or 1-800-959-9174, x243.



## When are programs offered?

Year-round. The park begins taking scheduling requests for the academic year in late August.

## Where are programs offered?

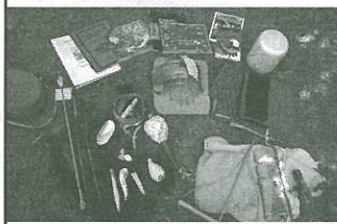
At the cultural history sites of Chellberg Farm and Bailly Homestead, along the Mount Baldy and West Beach shorelines, and at the Calumet Dune Interpretive Center and the Douglas H. Center for Environmental Education in Gary, Indiana.

## Where can you go for more information?

[www.nps.gov/indu/for teachers](http://www.nps.gov/indu/for%20teachers) or e-mail the national lakeshore at [INDU\\_Interpretation@nps.gov](mailto:INDU_Interpretation@nps.gov). The lakeshore's website has interactive games for students, activity guides for teachers to download, and a complete list of programs.

## Teacher Workshops

The national lakeshore partners with education institutions to provide professional development opportunities within the park. Year-round workshops focus on various themes. Educators can earn graduate credit through local universities for their participation. For a list of upcoming workshops, visit [www.nps.gov/indu/forteachers/professionaldevelopment.htm](http://www.nps.gov/indu/forteachers/professionaldevelopment.htm), or contact the education office at 219-926-7561 x243, or the Great Lakes Research and Education Center at 219-926-7561 x290.



## Classroom Resources

The national lakeshore loans videos and traveling trunks to regional educators without charge; however, educators must pick them up and return them to the park. For a complete list of available resources, visit [www.nps.gov/indu/forteachers/materialsforloan.htm](http://www.nps.gov/indu/forteachers/materialsforloan.htm) or contact the GLREC at 219-926-7561 x290.

## Become a Junior Ranger!

Children of all ages can participate in this fun, free, family-oriented program. Stop by the national lakeshore's visitor center to pick up an activity guide for the beach, historic sites, or the entire park, and learn about what makes Indiana Dunes a special place worth preserving. After completing the activities, stop by the visitor center for a Junior Ranger badge.



## Explore the Park on Your Own!

Many educators wish to bring their groups to the dunes on their own. National lakeshore activity guides are available at [www.nps.gov/indu/forteachers/lessonplansandteacherguides.htm](http://www.nps.gov/indu/forteachers/lessonplansandteacherguides.htm).

Interactive games, such as the **Web Ranger Challenge** at [www.nps.gov/indu/forteachers/onlinegames.htm](http://www.nps.gov/indu/forteachers/onlinegames.htm), are recommended to help students prepare school groups and families for their visit to the national lakeshore.



Take the **Water Safety Challenge!** Students of all ages can learn about the importance of water safety from this interactive web quiz. The game is designed to teach some of the basic safety rules of Lake Michigan swimming, rip currents, and beach-going. Check out the web site at <http://www.nps.gov/indu/watersafety/index.htm>.



## What other resources are available for educators?

**RESIDENTIAL PROGRAMS AT THE INDIANA DUNES ENVIRONMENTAL LEARNING CENTER**  
Indiana Dunes Environmental Learning Center provides a residential environmental education programs within the national lakeshore. Programs are available for 4th grade and beyond. Participants stay overnight in cabins. **Contact the Learning Center at [info@duneslearningcenter.org](mailto:info@duneslearningcenter.org), or call 219-395-9555 for more information or to reserve a program.**

## NEEDED

## VOLUNTEER HELP

Many individuals with a passion for the Indiana Dunes National Lakeshore donate thousands of hours each year as volunteers. There are always lots of volunteer opportunities at the national lakeshore. Whether you want to help indoors or out, we probably have something that you will find both interesting and rewarding. Volunteer activities include greeting visitors at the information desk, leading tours for school groups, restoring natural habitats, and helping with festivals. If you can give just a few hours on a regular basis, you can make a difference. For more information on the volunteer program, please contact the national lakeshore's Volunteer Coordinator Cliff Goins at 219-926-7561, x246 or [cliff\\_goins@nps.gov](mailto:cliff_goins@nps.gov).



NPS Collection

Volunteer Gabrielle O'Connor cuts down an invasive black locust tree at Tolleston Dunes.

### FACILITY AND GROUNDS ASSISTANTS

Volunteers are needed to assist maintenance staff with trail maintenance, painting, raking leaves, cleaning windows, picking up litter, cleaning fire pits, and doing light construction work. Contact Ken Ginger at 219-926-7561 x510 or [ken\\_ginger@nps.gov](mailto:ken_ginger@nps.gov).

### PRESERVATION ASSISTANTS

Help us continue the preservation of Margaret Larson's home site. In fall 2005, the barn preservation began with the partial roof reconstruction. With your help, we can complete the roof this fall. In 2007, we would like to begin transforming the small summer kitchen into a garden equipment storage area. These projects require volunteers with carpenter skills. Painting skills are also needed for the summer kitchen. Contact Judy Collins at 219-926-7561 x343 or [judith\\_collins@nps.gov](mailto:judith_collins@nps.gov).

### VISITOR CENTER ASSISTANTS

Volunteers are needed to assist interpretive rangers at the new Dorothy Buell Memorial Visitor Center. Volunteer duties include answering the telephone and answering questions at the visitor information desk, tracking visitor statistics, stuffing envelopes, organizing publications and supplies, and stocking brochure racks. If you would like to volunteer to do clerical and/or public contact work 4 hours or more per week, contact Ryan Koepke at 219-926-7561 x226 or [ryan\\_koepke@nps.gov](mailto:ryan_koepke@nps.gov).

### RESOURCE MANAGEMENT ASSISTANTS

Volunteers are needed to help protect the national lakeshore from the threats of invasive species, pollution, and habitat fragmentation. No specific experience is needed. Positions include greenhouse assistants (propagate plants), weather data assistants (collect weather and pollution data), field assistants (restore prairies, woodlands, and wetlands), and wildlife assistants (monitor wildlife populations). Contact Laura Thompson at 219-926-7561 x337 or [laura\\_thompson@nps.gov](mailto:laura_thompson@nps.gov).