

An Improved Wind Probability Program: A Joint Hurricane Testbed Project Update

Mark DeMaria and John Knaff, NOAA/NESDIS, Fort Collins, CO
Stan Kidder, CIRA/CSU, Fort Collins, CO
Patrick Harr, Naval Postgraduate School, Monterey, CA
Chris Lauer, NCEP/TPC, Miami, FL

Presented at the
Interdepartmental Hurricane Conference
March 5, 2008

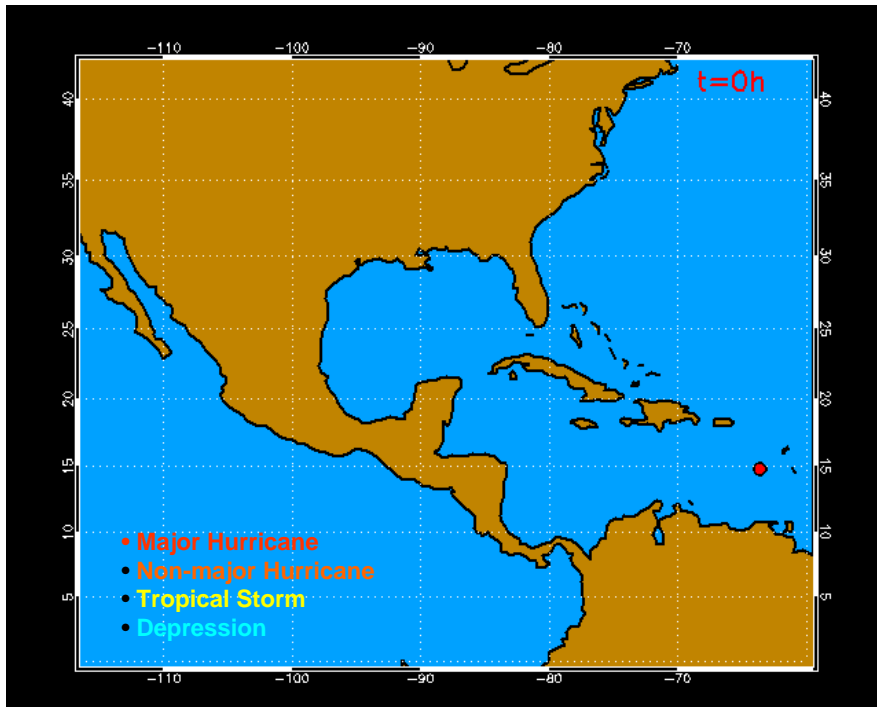


Monte Carlo Wind Probability Model

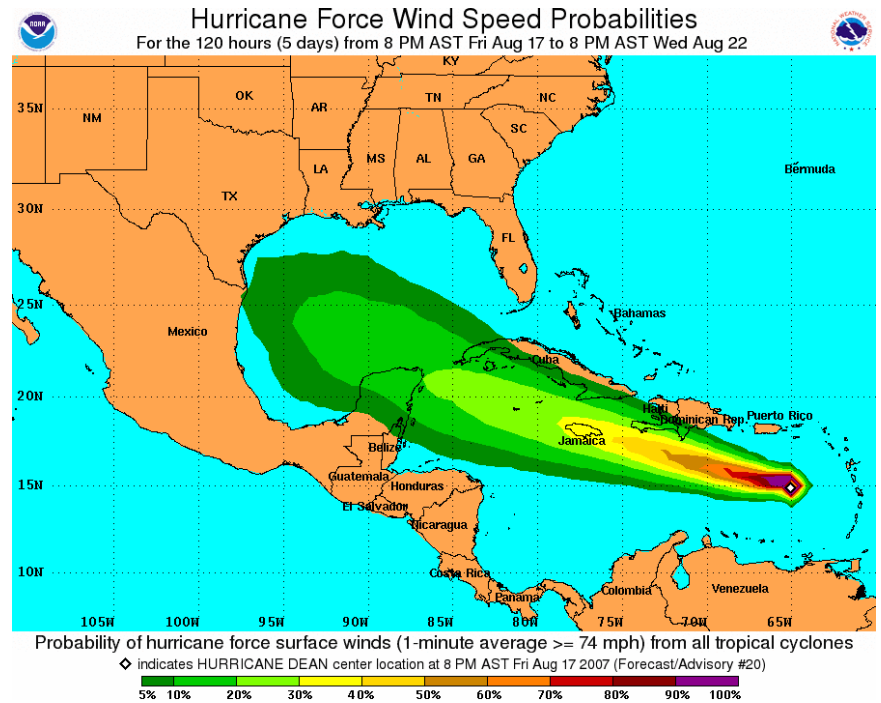
- 1000 track realizations from random sampling NHC *track error* distributions
 - Serial correlation and bias of errors accounted for
- Intensity of realizations from random sampling NHC *intensity error* distributions
 - Serial correlation and bias of errors accounted for
 - Special treatment near land
- Wind radii of realizations from radii CLIPER model and its *radii error* distributions
 - Serial correlation included
- Probability at a point from counting number of realizations passing within the wind radii of interest

MC Probability Example

Hurricane Dean 17 Aug 2007 18 UTC



1000 Track Realizations



64 kt 0-120 h Cumulative Probabilities

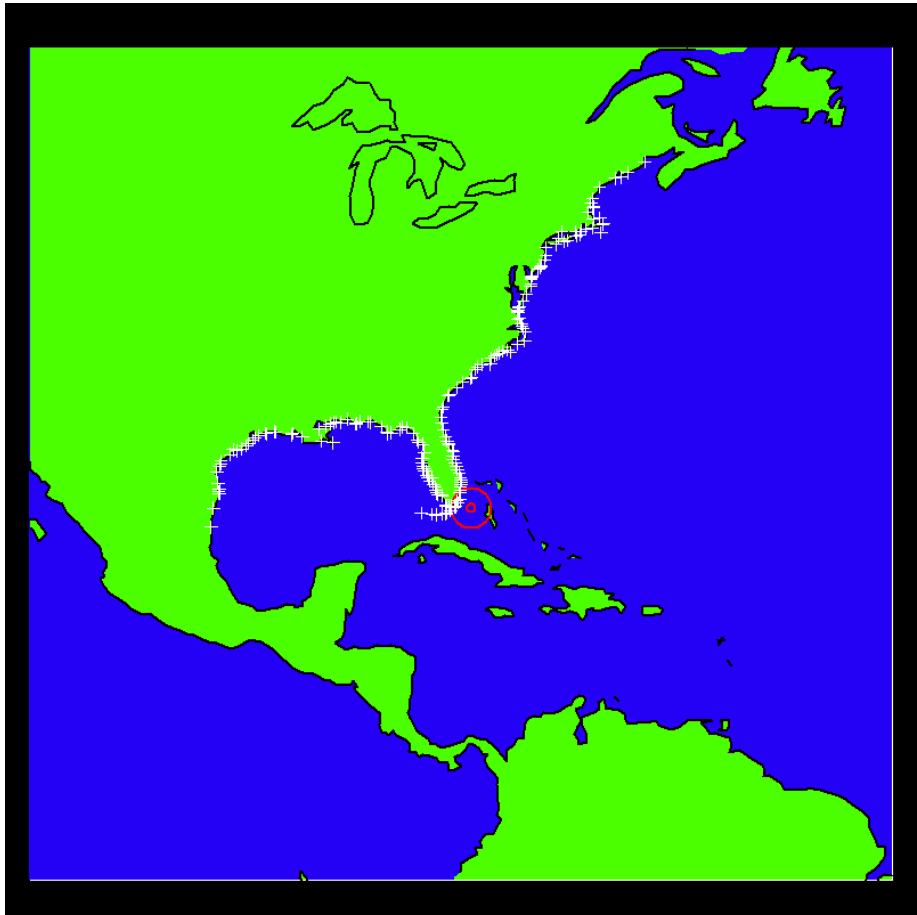
Project Tasks

1. Improved Monte Carlo wind probability program by using situation-depending track error distributions
 - Track error depends on Goerss Predicted Consensus Error (GPCE)
2. Improve timeliness by optimization of MC code
3. Update NHC wind speed probability table product
 - Extend from 3 to 5 days
 - Update probability distributions (currently based on 1988-1997)

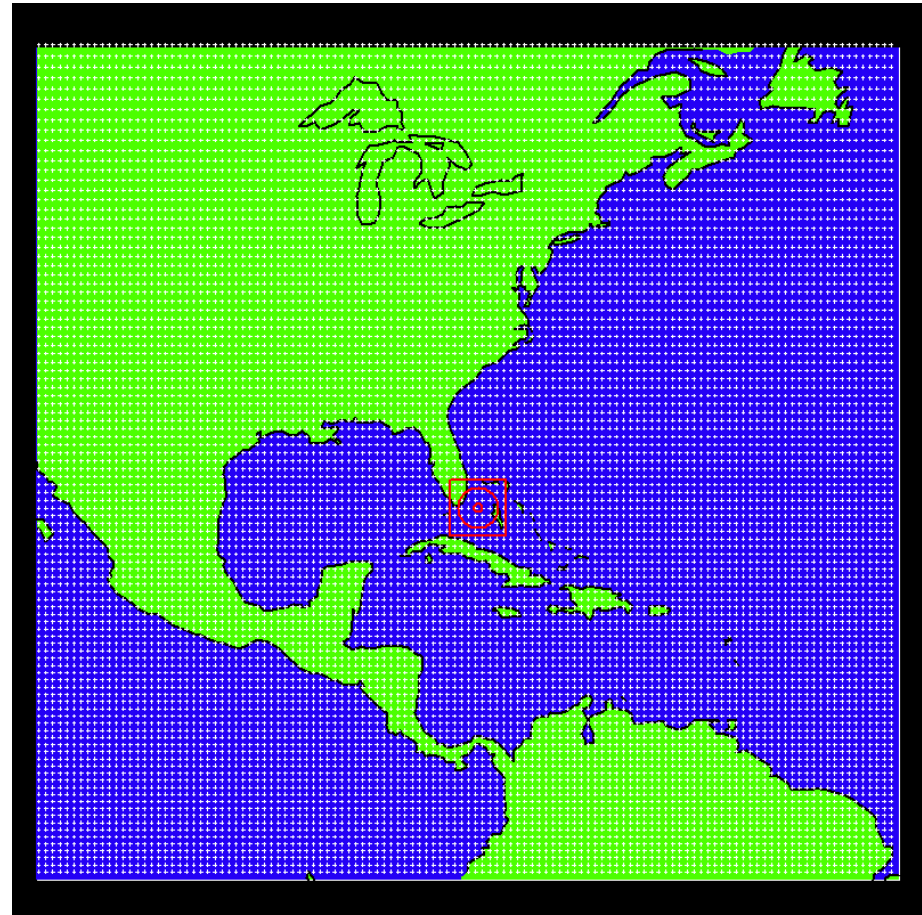
Code Optimization

- Code profiling showed ~85% of CPU in distance calculation routine
- Automated procedure added to test for regular grid
- If yes, rectangular mask added at each time step to reduce number of distance calculations
- Speed up of ~600% for large grid
 - 25 to 50% expected
- Implemented before 2007 season

Code Optimization



Text Product Grid



Graphical Product Grid

Wind Speed Probability Table



WIND SPEED FORECAST FOR DEAN
 EXPRESSED AS PROBABILITY
 FROM NHC ADVISORY 16
 5:00 AM EDT AUG 17 2007



TIME	WIND SPEED INTERVAL IN MPH							
	DISSIPATED	TROPICAL DEPRESSION < 39	TROPICAL STORM 39 - 73	HURRICANE >= 74	HURRICANE			
					CAT. 1 74 - 95	CAT. 2 96 - 110	CAT. 3 111 - 130	CAT. 4-5 >= 131
12	<2%	<2%	<2%	>98%	30%	50%	20%	3%
24	<2%	<2%	5%	95%	40%	30%	15%	5%
36	<2%	<2%	<2%	>98%	25%	25%	35%	20%
48	<2%	<2%	<2%	>98%	10%	20%	30%	40%
72	<2%	<2%	<2%	98%	10%	25%	30%	30%

Wind Speed Probability Table

- Developed by E. Rappaport and M. DeMaria as part of original NHC graphical products
- Limitations addressed by JHT project
 - Based on 1988-1997 NHC error statistics
 - Extends only to 3 days
- Other limitations
 - Does not directly account for land interaction
 - Inconsistent with other probability products from MC model
- Rick Knabb and Dan Brown suggestion*:
 - Use output from MC model as table input
 - Addresses all of the above limitations
 - Will automatically update when MC model updates

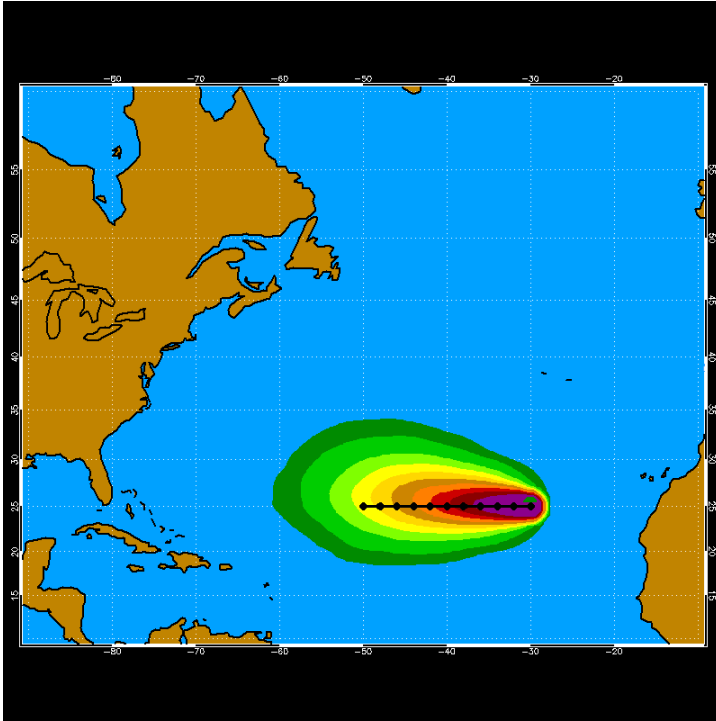
Wind Speed Probability Table

Evaluation Procedure

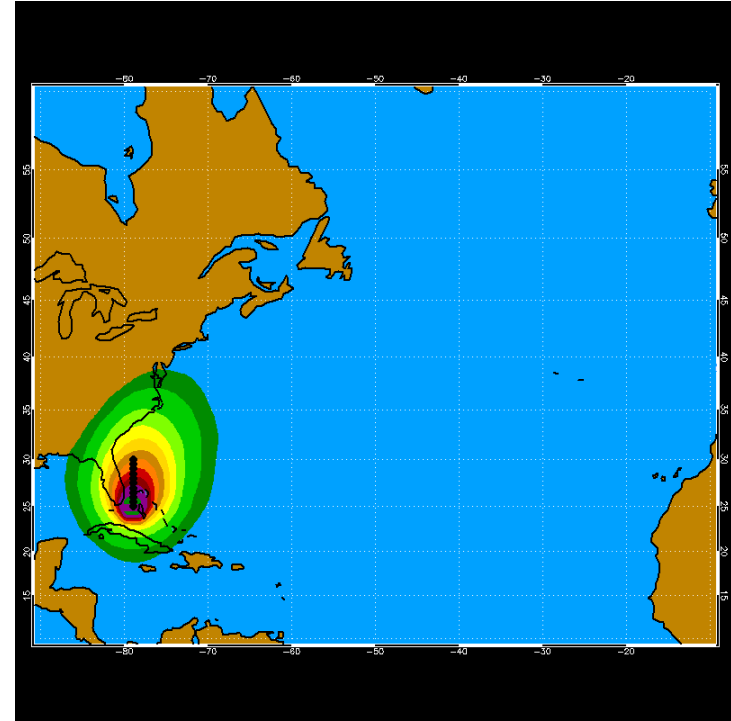
- Examine MC model intensity probability distributions for idealized storms
- Compare MC intensity probabilities with WSPT values for real forecasts
 - Frances 29 Aug 2004 12 UTC
 - Katrina 24 Aug 2005 18 UTC
 - Katrina 27 Aug 2005 18 UTC
 - Ernesto 29 Aug 2006 06 UTC
 - Ernesto 29 Aug 2006 18 UTC
 - Humberto 12 Sep 2007 12 UTC
 - Humberto 12 Sep 2007 18 UTC
 - Ingrid 13 Sep 2007 00 UTC

Wind Speed Probability Table

Idealized Storm Cases

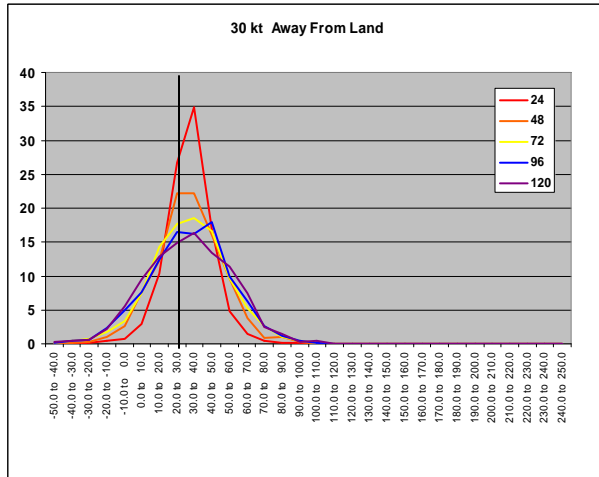


**Straight west track
far from land
Three cases:
Constant max wind of
30, 90 and 150 kt**

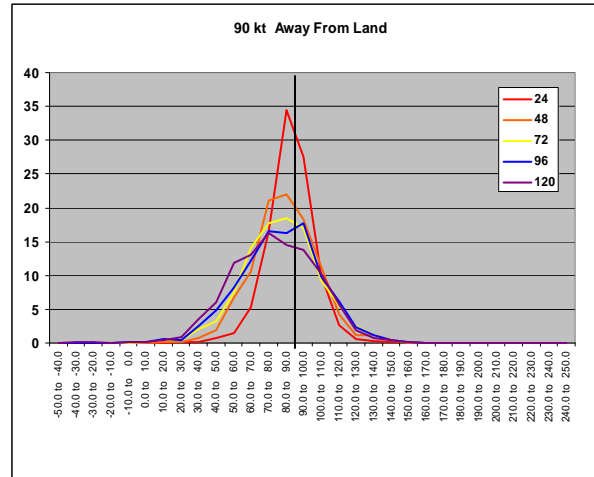


**Straight north track
close to land
Three cases:
Constant max wind of
30, 90 and 150 kt**

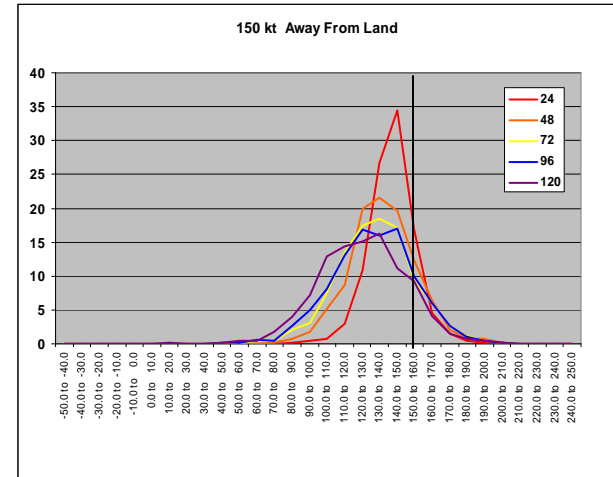
MC Intensity Distributions Far from Land



30 kt fcst



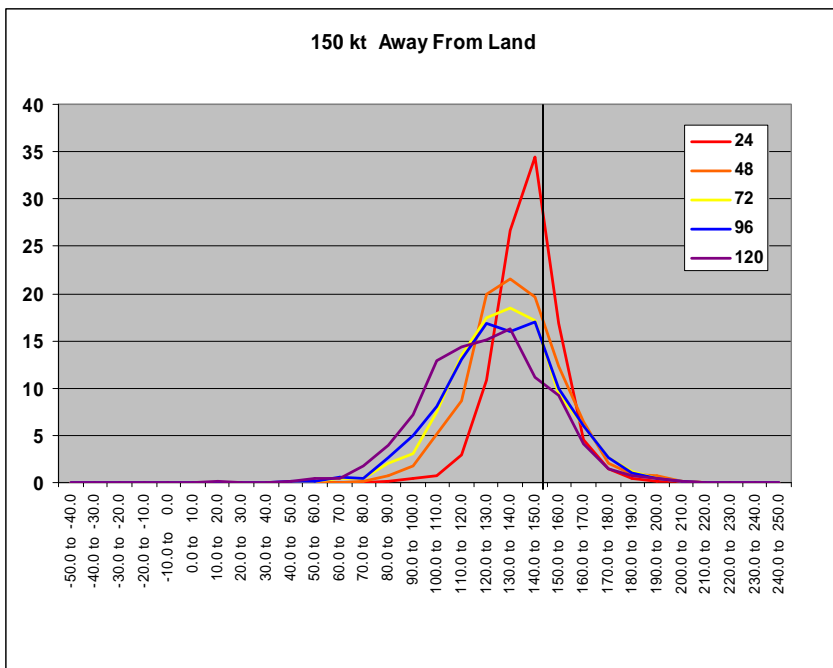
90 kt fcst



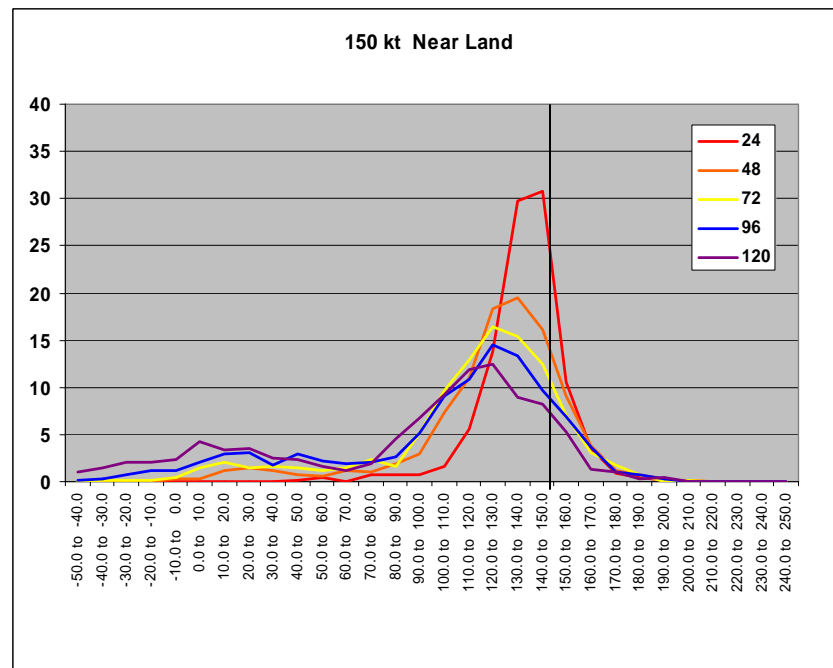
150 kt fcst

MC Intensity Distributions

150 kt fcst far from and near land

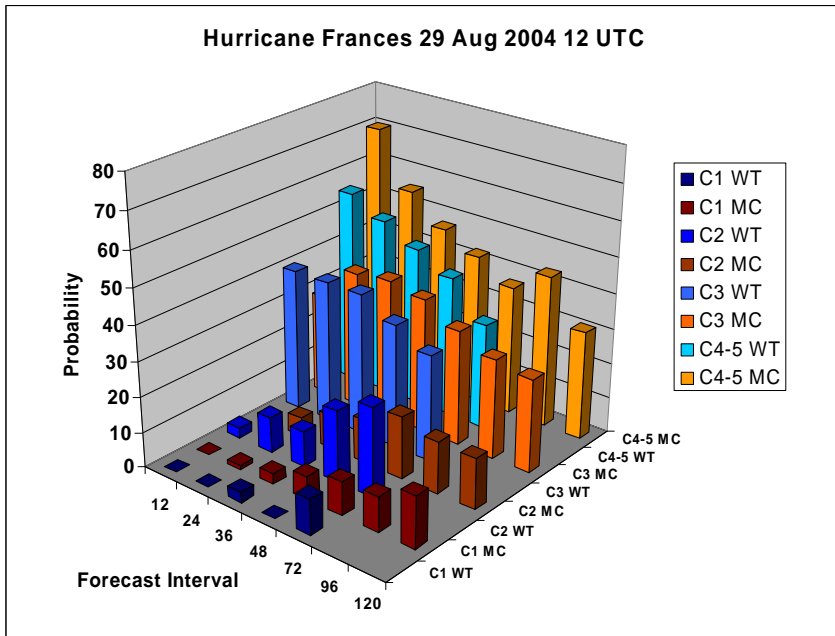


Far from land

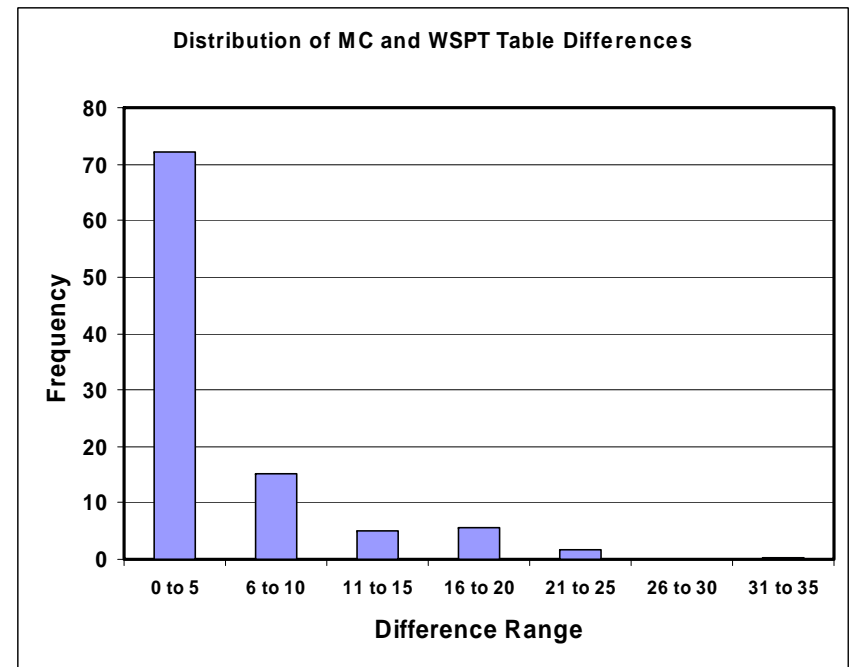


Near land

MC and Wind Speed Table Probability Comparison



Hurricane France Example



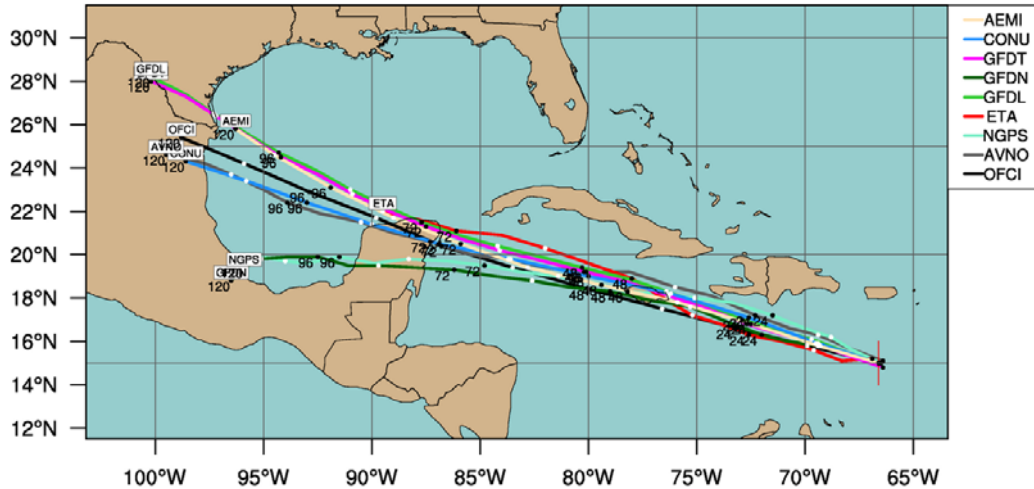
Nine Forecast Totals

Forecast-Dependent Probabilities

MAJOR HURRICANE DEAN (AL04)

Late-cycle track guidance valid 0600 UTC, 18 August 2007

Current Intensity: 130 kt Current Basin: North Atlantic

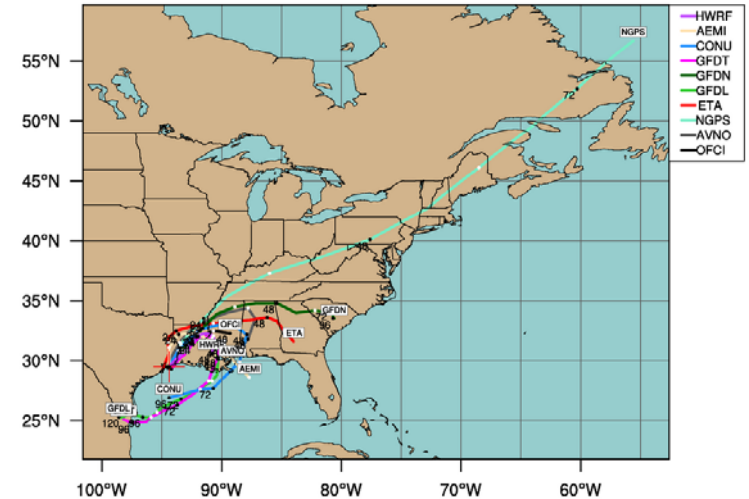


This plot does not display official storm information. Use for information purposes only.
DO NOT USE FOR LIFE AND DEATH DECISIONS!

HURRICANE HUMBERTO (AL09)

Late-cycle track guidance valid 0600 UTC, 13 September 2007

Current Intensity: 70 kt Current Basin: North Atlantic



This plot does not display official storm information. Use for information purposes only.
DO NOT USE FOR LIFE AND DEATH DECISIONS!

- Operational MC model uses basin-wide track error distributions
- Can situation-dependent track distributions be utilized?

Goerss Predicted Consensus Error (GPCE)

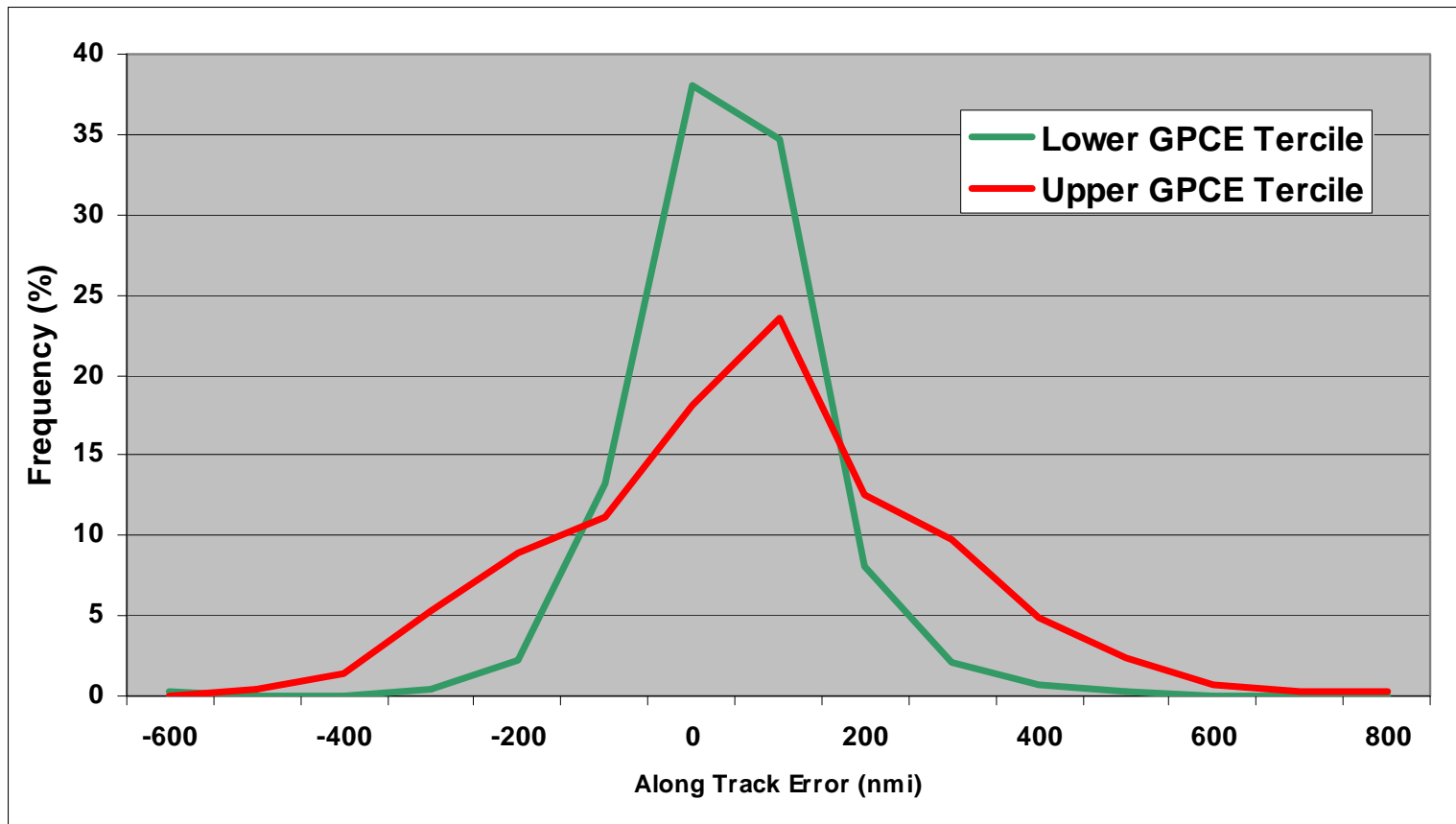
- Predicts error of CONU track forecast
 - Consensus of GFDL, AVNI, NGPI, UKMI, GFNI
- GPCE Input
 - Spread of CONU member track forecasts
 - Initial latitude
 - Initial and forecasted intensity
- Explains 15-50% of CONU track error variance
- GPCE estimates radius that contains ~70% of CONU verifying positions at each time

Use of GPCE in the MC Model

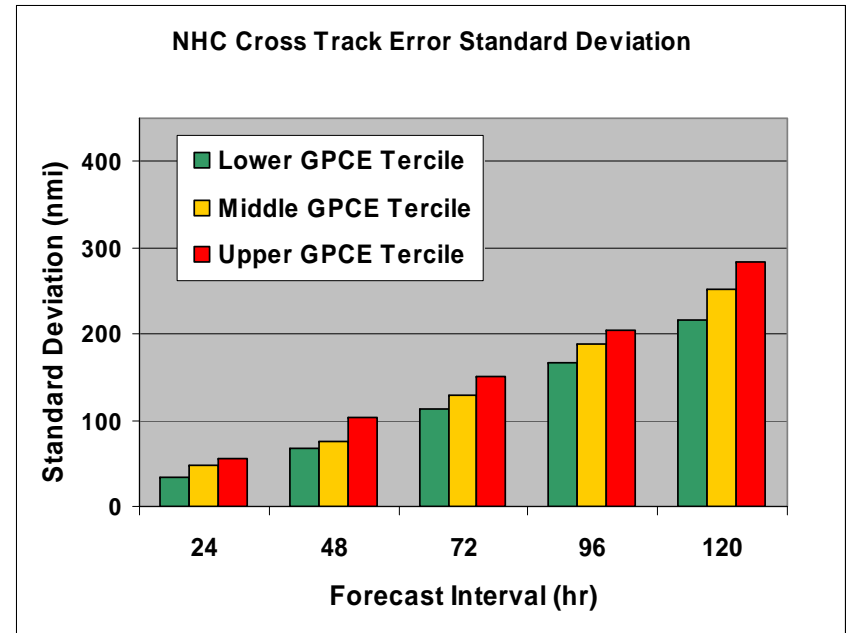
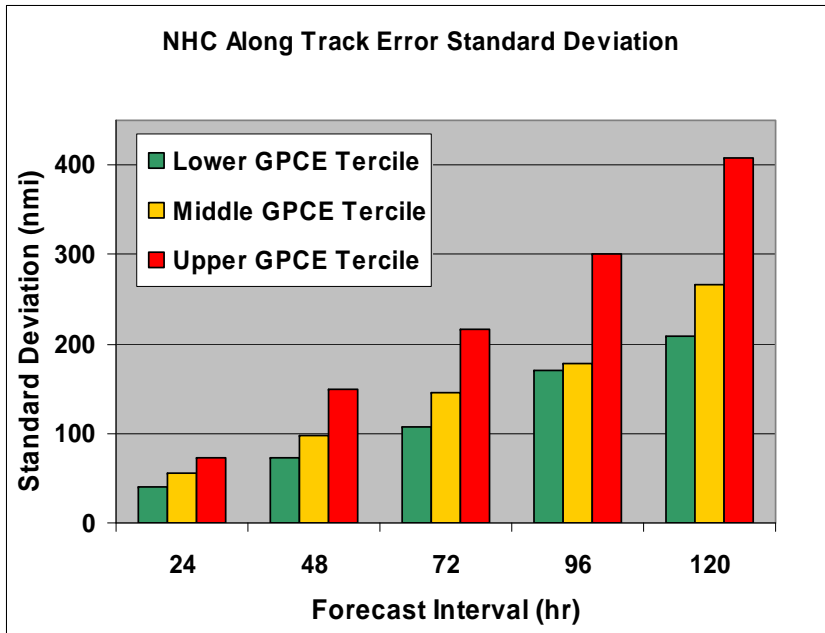
- 2002-2006 database of GPCE values created by NRL*
- Are GPCE radii correlated with NHC and JTWC track errors?
 - GPCE designed to predict CONU error
- How can GPCE values be used in the MC model?
 - MC model uses along/cross track error distributions

**Buck: Domestic or Imported?*

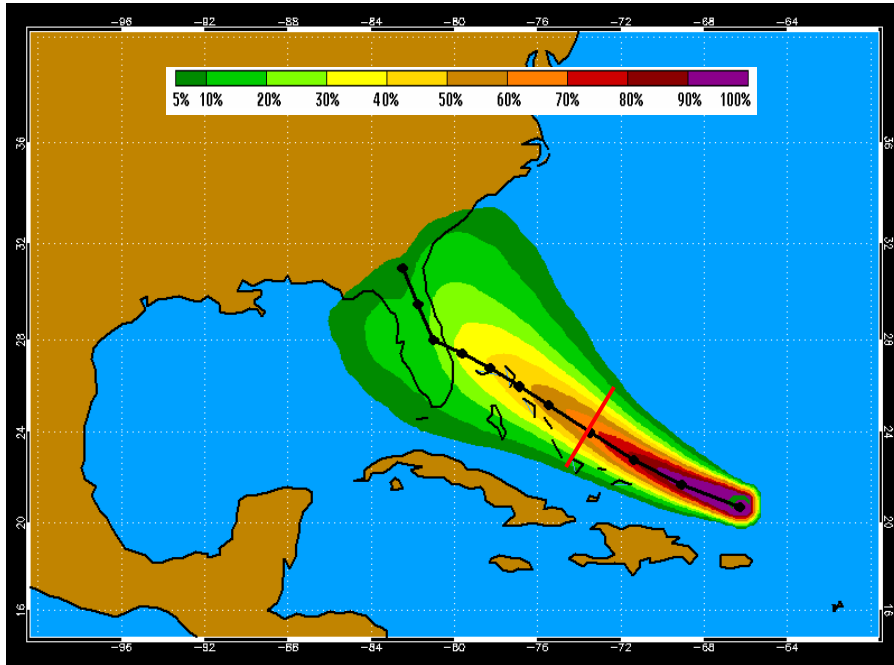
72 hr Atlantic NHC Along Track Error Distributions Stratified by GPCE (2002-2006)



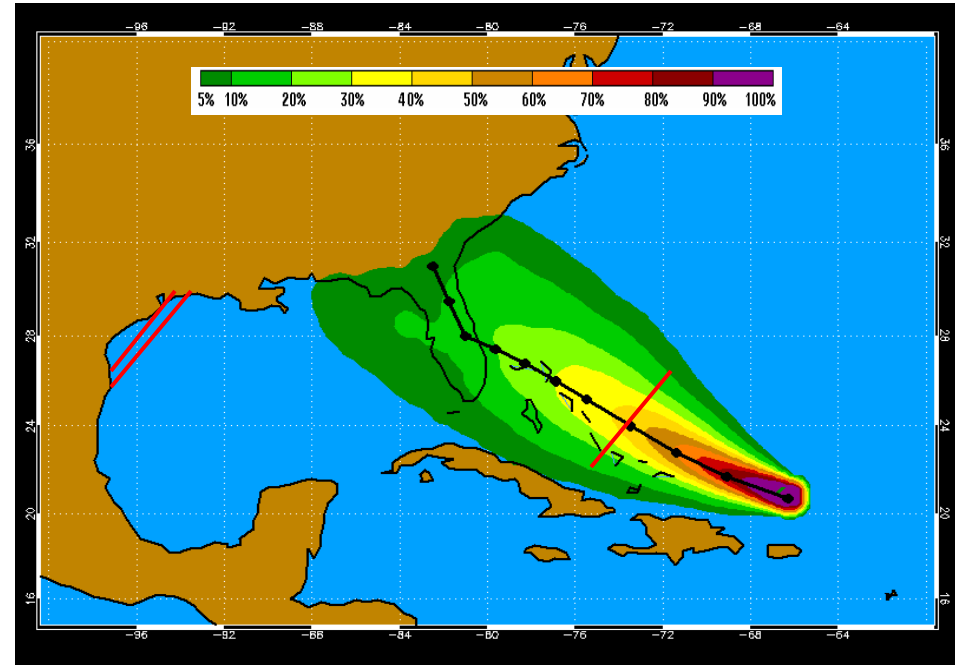
NHC Along and Cross Track Error Standard Deviations Stratified by GPCE (2002-2006 Atlantic Sample)



MC Model with Track Errors from Upper and Lower GPCE Terciles



Lower Tercile Distributions



Upper Tercile Distributions

Hurricane Frances 2004 01 Sept 00 UTC Example
120 hr Cumulative Probabilities for 64 kt

Remaining Questions

- How to include GPCE in MC model
 - Method 1: Sample from appropriate tercile
 - Method 2: Include GPCE input in serial correlation correction
- Behavior in other basins
- Does GPCE correction improve probability verification?
- Real time tests beginning Aug 2008

Summary

- Code optimization is complete
 - Factor of 6 speed up
- Wind speed table product input from MC model is a reasonable approach
 - Implementation in 2008
- GPCE-dependent MC model is promising
 - Further evaluation needed
 - Real time parallel runs in Aug 2008?