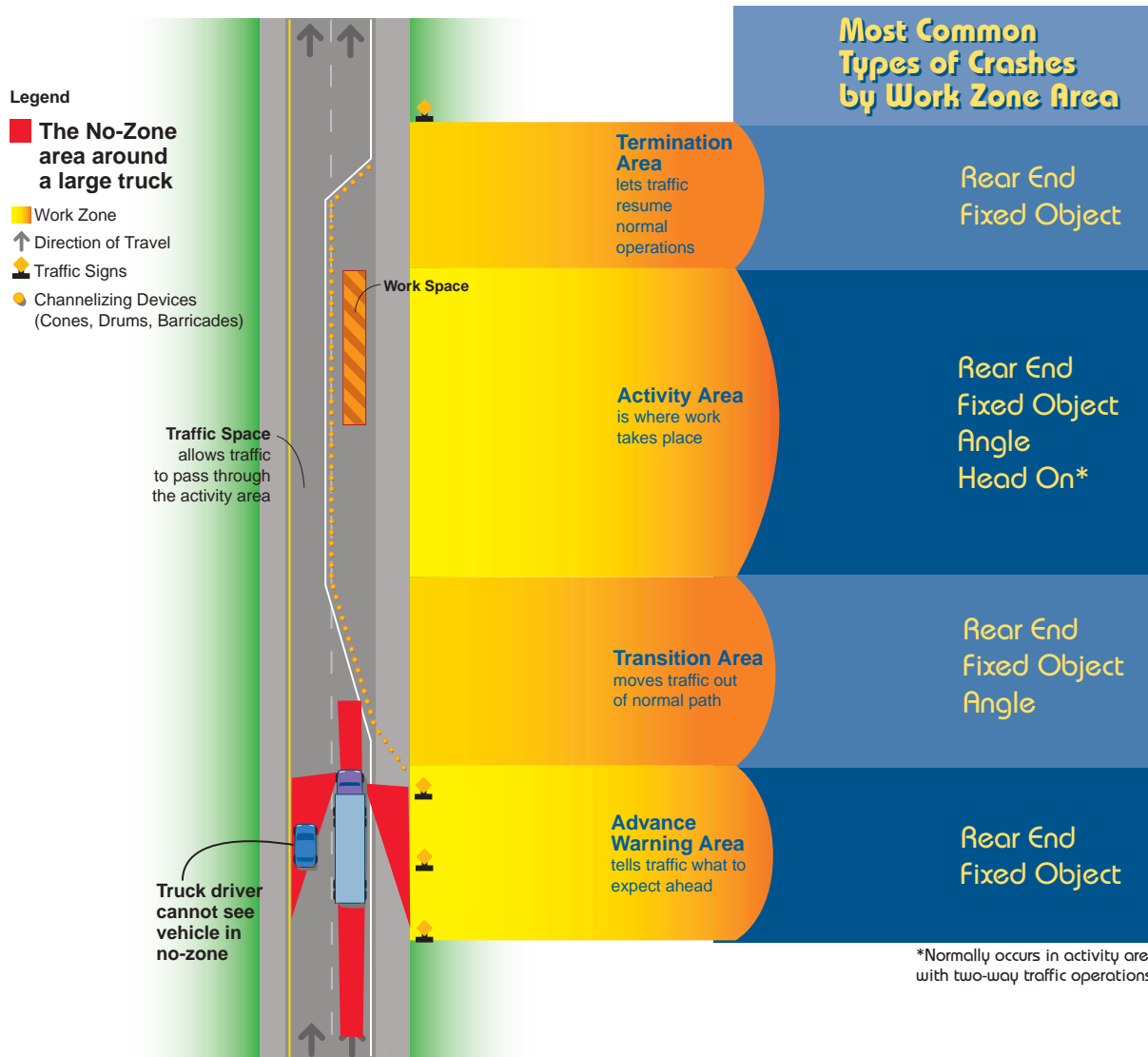


Most Common Types of Crashes by Work Zone Area



Large truck drivers should use extra caution in the merge areas and get in the correct lane well in advance of the lane closure. One-third of all crashes between large trucks and cars happen in the danger areas around the truck. These danger areas, known as the **No-Zone**, are along the sides, front, and rear of trucks where the driver cannot see, even with the best mirrors.

<http://safety.fhwa.dot.gov/programs/usz.htm>



U.S. Department of Transportation
Federal Highway Administration

FHWA-SA-03-010

Trucking Safely Through Work Zones



Safety practices for drivers of large trucks

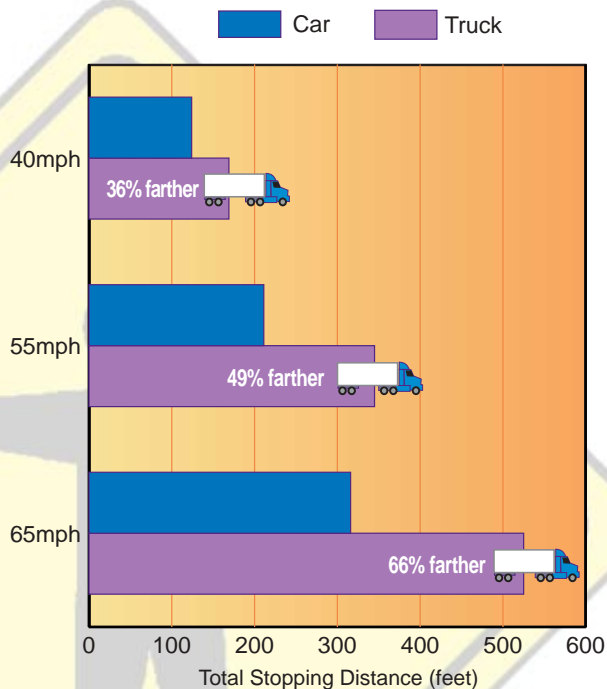


Creating Safer Work Zones: Improving Operations on Both Sides of the Barrel



The Difference Between Large Trucks And Cars

The stopping distance required for a large truck traveling at 55 mph is almost 50 percent greater than that needed for a car.



Estimates are for 80,000 lb. loaded, tractor-trailers and mid-size passenger cars traveling on a dry, level road.
Source: National Safety Council

The Facts About Work Zone Crashes Involving Large Trucks

Angle, rear-end, and head-on collisions are the most common types of work zone crashes involving large trucks.

HOW many occur?

- Almost 30 percent of all work zone crashes involve large trucks.
- The number of people killed in work zone crashes involving large trucks has been increasing. Over 1,000 fatalities and over 18,000 injuries have occurred during the last 5 years.

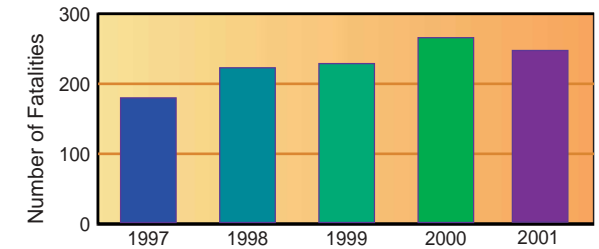
WHEN do they happen?

- 65 percent of fatal work zone crashes involving large trucks occur during the day.
- Six times as many fatal work zone crashes involving large trucks occur on Monday through Friday (the weekdays) compared to Saturday and Sunday (the weekend).

WHERE do they take place?

- About 60 percent of fatal work zone crashes involving large trucks take place on divided roads.
- Over 70 percent of fatal work zone crashes involving large trucks occur on level roadways.
- Almost 90 percent of fatal work zone crashes involving large trucks occur on straight roads.

Fatalities in Work Zone Crashes Involving Large Trucks



Safety Practices For Drivers of Large Trucks



Work zones often result in narrow lanes, merging, shifting lanes, slowing and stopping traffic, unexpected work vehicles entering the traffic flow, temporary speed limit adjustments, flaggers in the roadway, confused drivers, and other disruptions.

- Always wear your safety belt.
- Pay attention to the signs.
- Adhere to instructions by the flagger.
- Leave enough space between you and the vehicle in front of you to stop safely.
- Take advantage of your driving height and anticipate braking situations.
- Be prepared to slow down or stop suddenly in a work zone.
- Get into the correct lane well in advance of lane closures.
- Be cautious of motorists racing to get ahead of you in merge areas.
- Be aware of your No-Zone areas where crashes are more likely to occur.
- Avoid work zones by using alternate routes where possible.