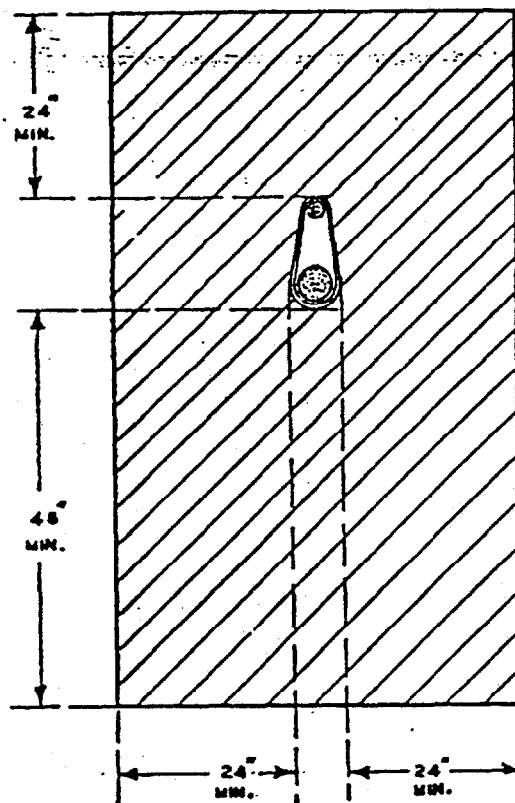


CLEARANCES OF SUPPLY SERVICE DROPS
FROM CONDUCTORS SUPPORTED BY MESSENGERS
RULE 54.8-C1



NOTE
NO SUPPLY SERVICE DROP
WITHIN SHADED AREA.
SEE RULE 57.4
FOR METHOD OF MEASUREMENT

FIG. 42

Illustrative Diagrams
SUPPLY SERVICE DROPS
FROM GUARDED RACK CONDUCTORS
RULE 54.9-E 1

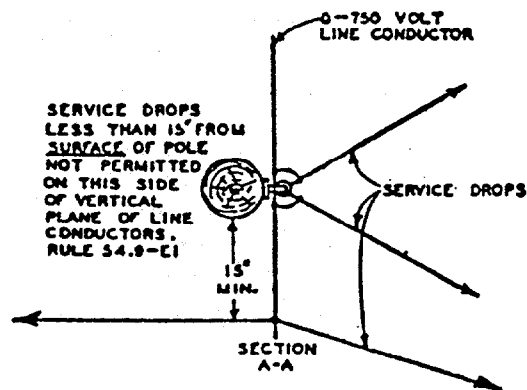
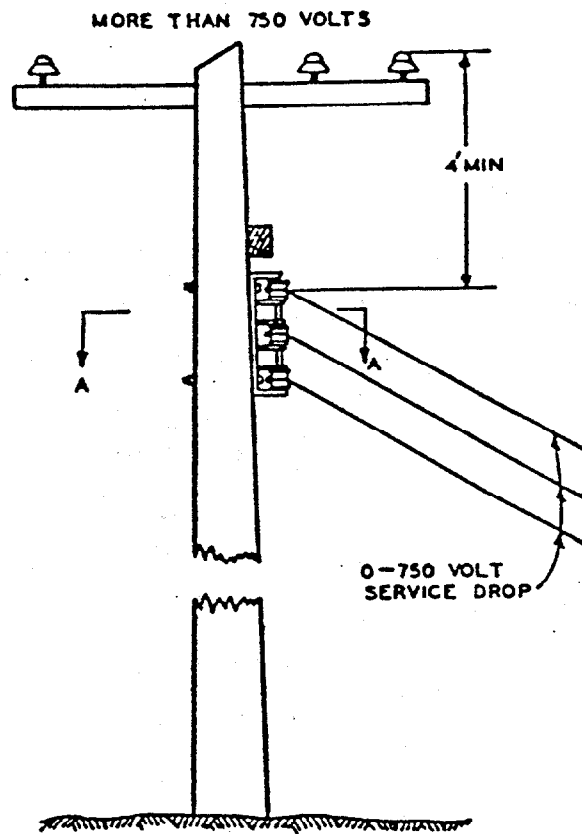


FIG. 43

EXPOSED COMMUNICATION GUYS
NOT IN PROXIMITY TO SUPPLY CONDUCTORS ON WOOD POLES.

RULES 21.3-C AND 86.4

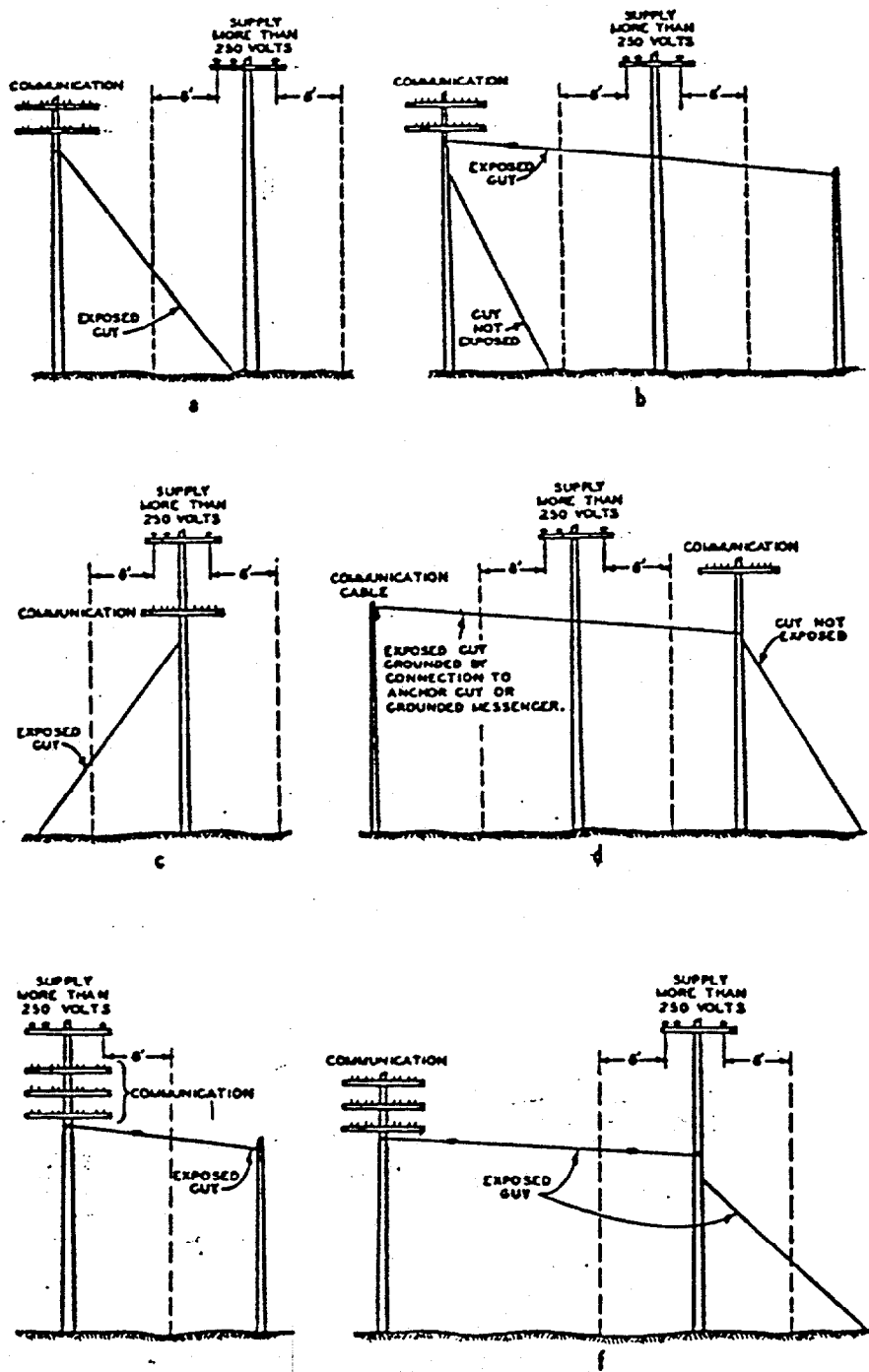


FIG. 44

GUYS IN PROXIMITY TO WOOD POLES
AND SUPPLY CONDUCTORS OF 20,000 VOLTS OR LESS.

RULES 21.3-D, 56.6-A AND 88.6.

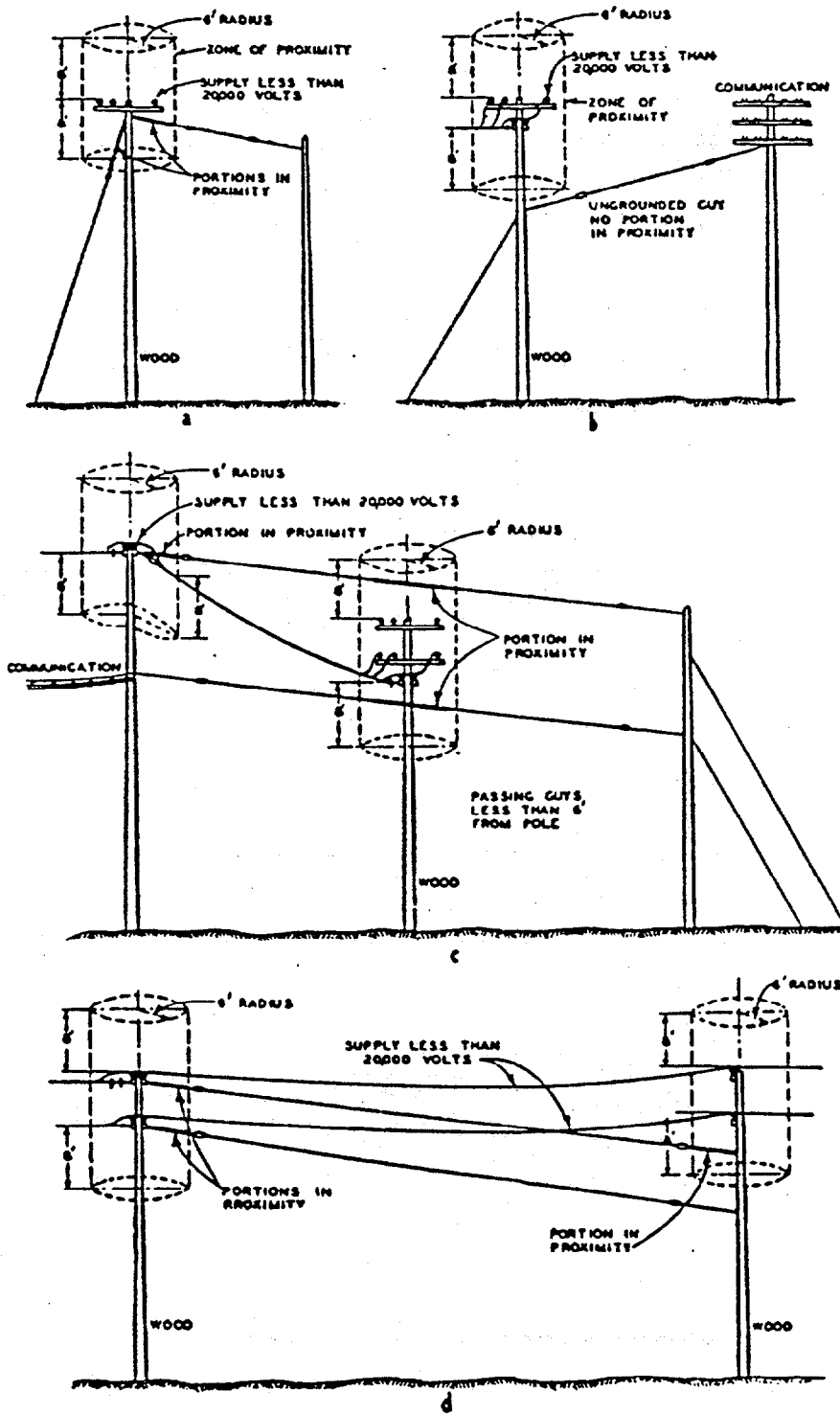


FIG. 45

SECTIONALIZATION OF OVERHEAD GUYS
ON SUPPLY LINES
RULE 56.7-A

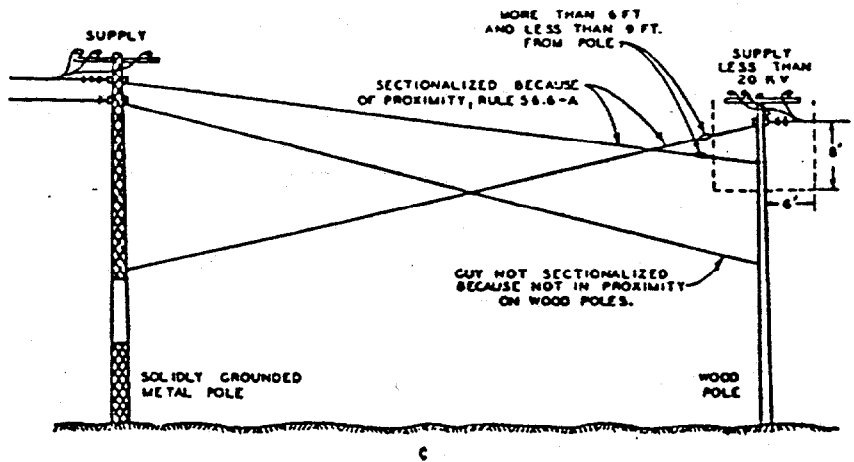
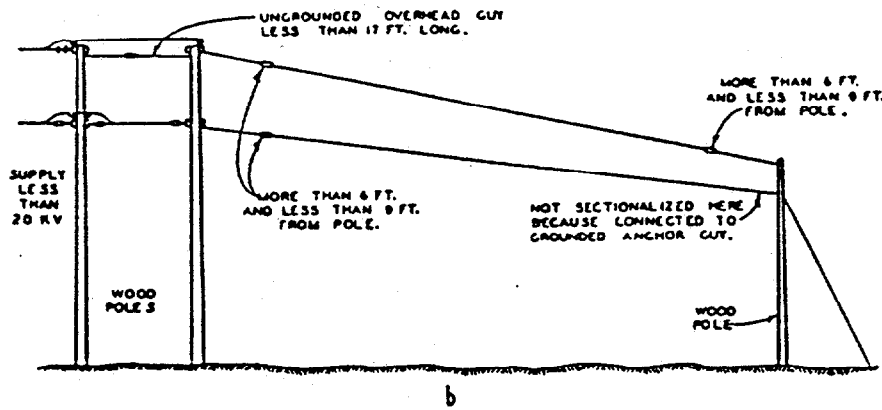
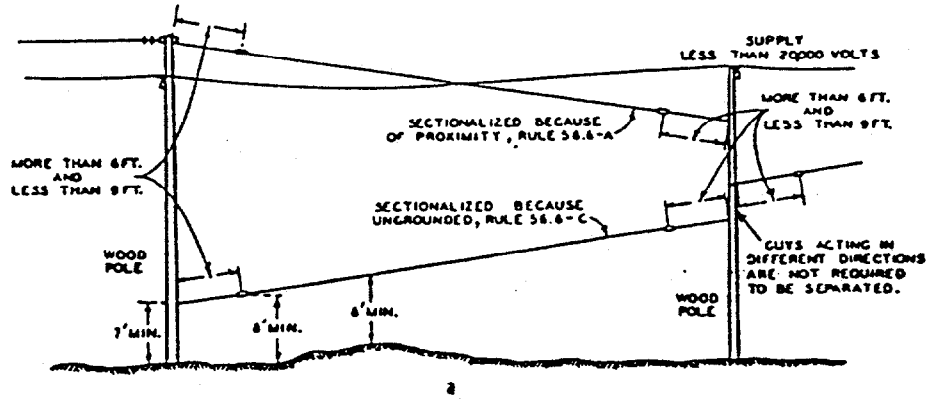


FIG. 46

Illustrative Diagrams

SECTIONALIZATION OF OVERHEAD GUYS
ON COMMUNICATION LINES
RULE 86.7-A

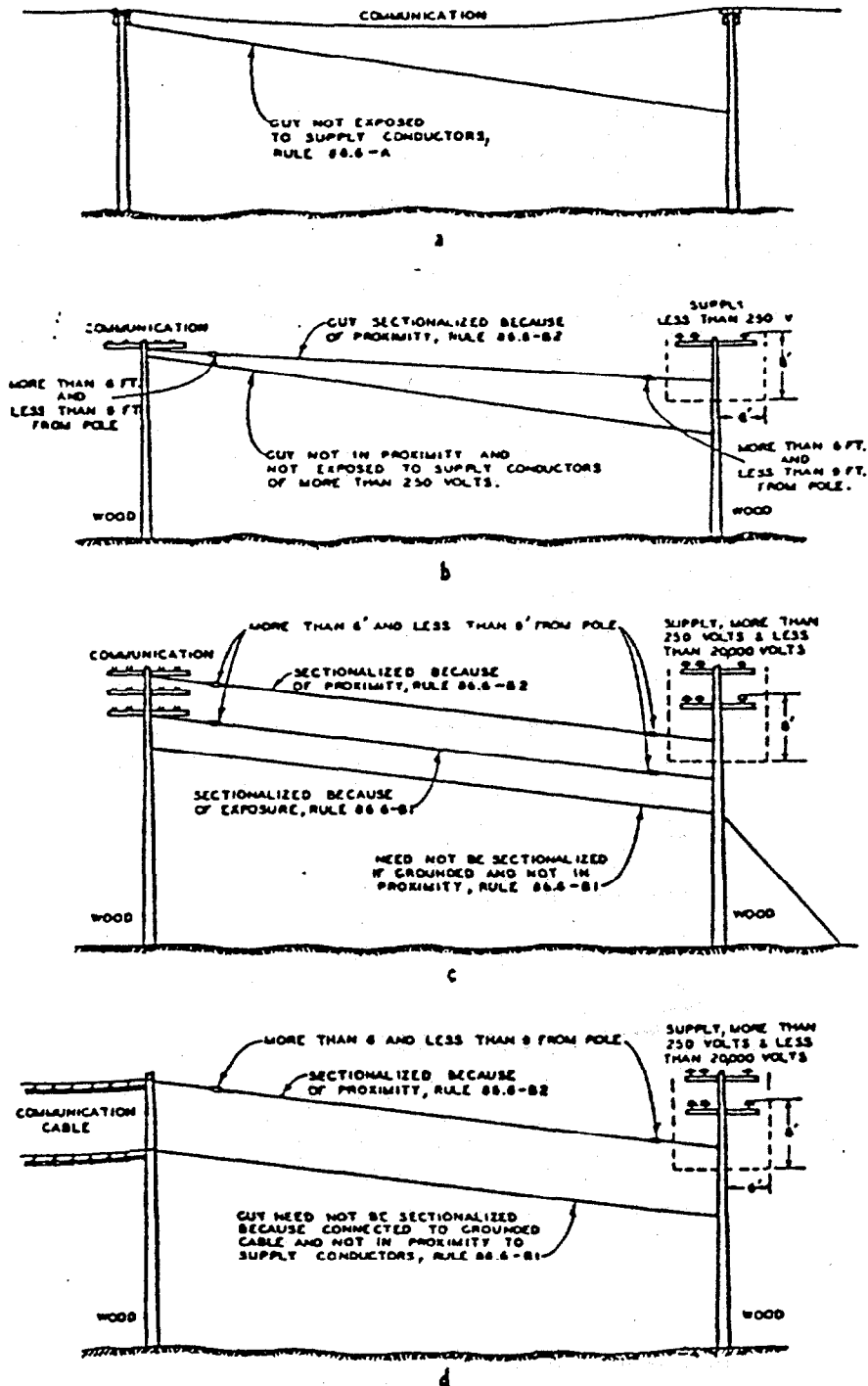


FIG. 47

SECTIONALIZATION OF OVERHEAD GUYS
ON JOINTLY USED POLES
RULES 86.7-A AND 86.7-A

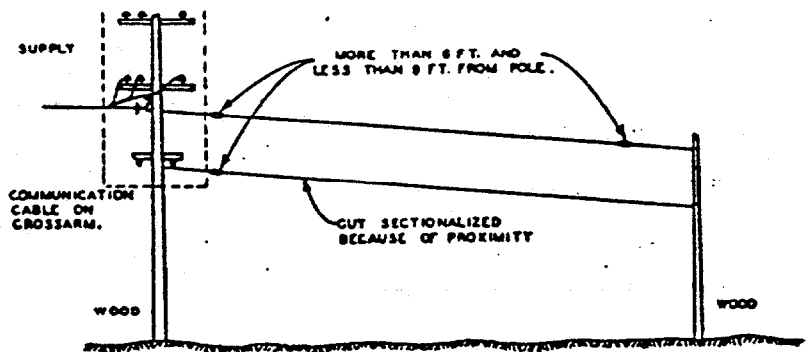
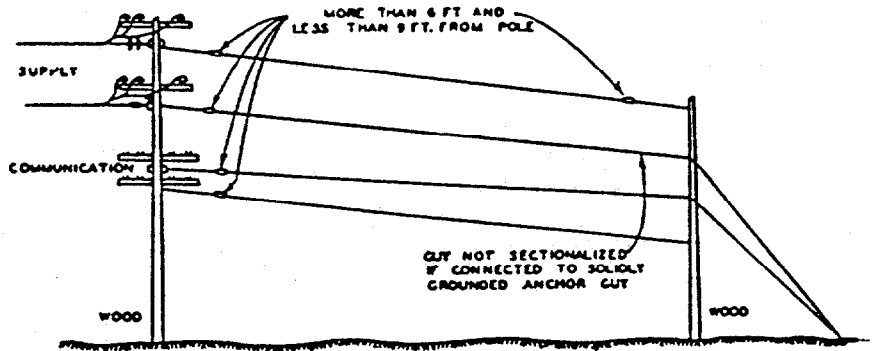
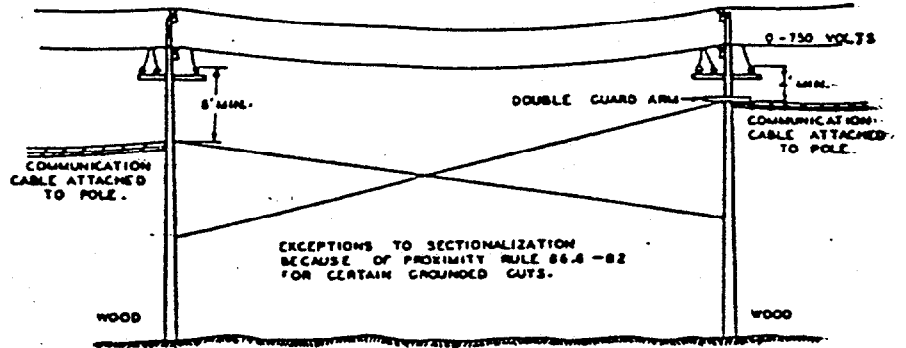


FIG. 48

SECTIONALIZATION OF ANCHOR GUYS

RULES 86.7-B & 86.7-D

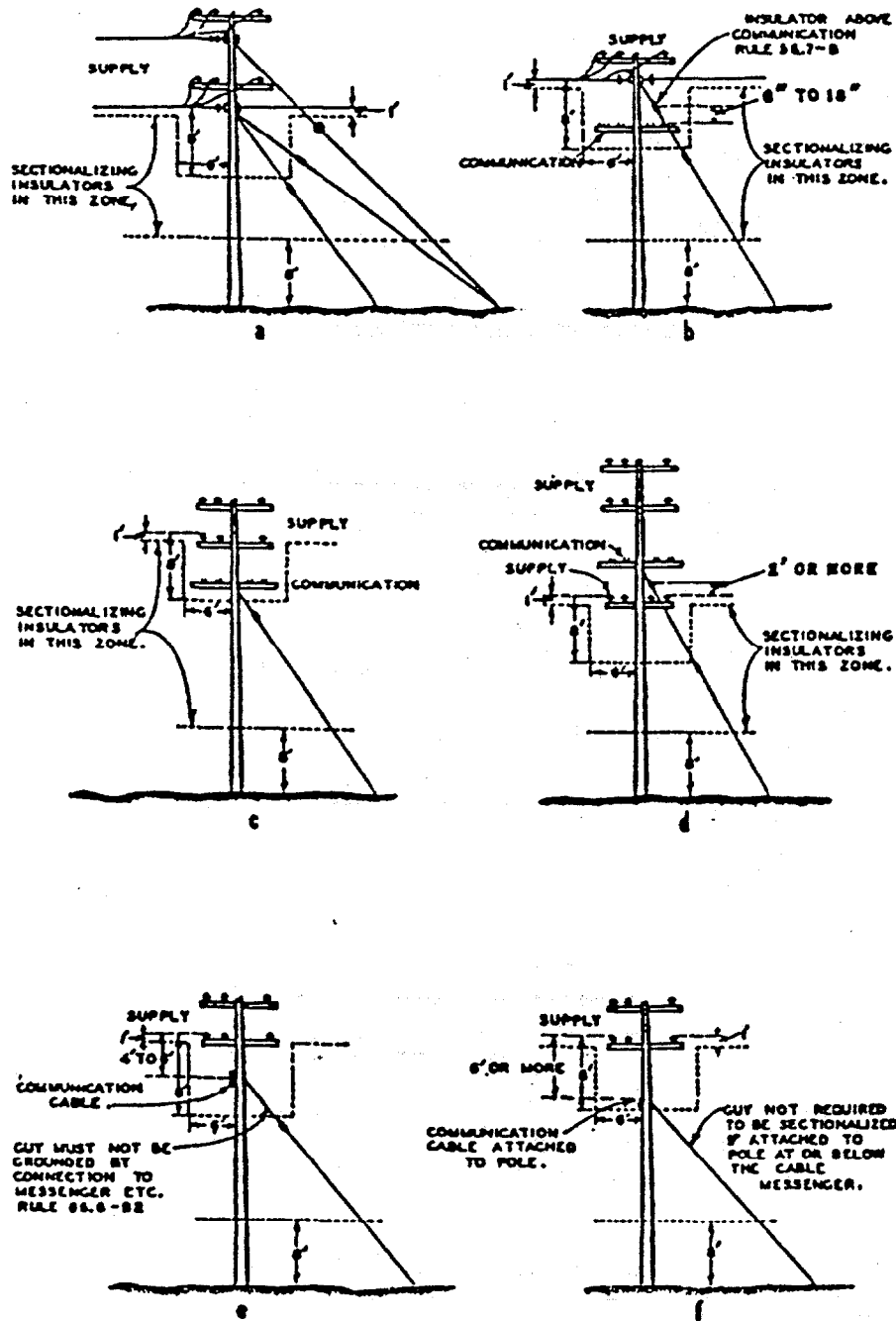


FIG. 49

SECTIONALIZATION OF
ARM GUYS AND BRANCHED GUYS

RULE 56.7-A

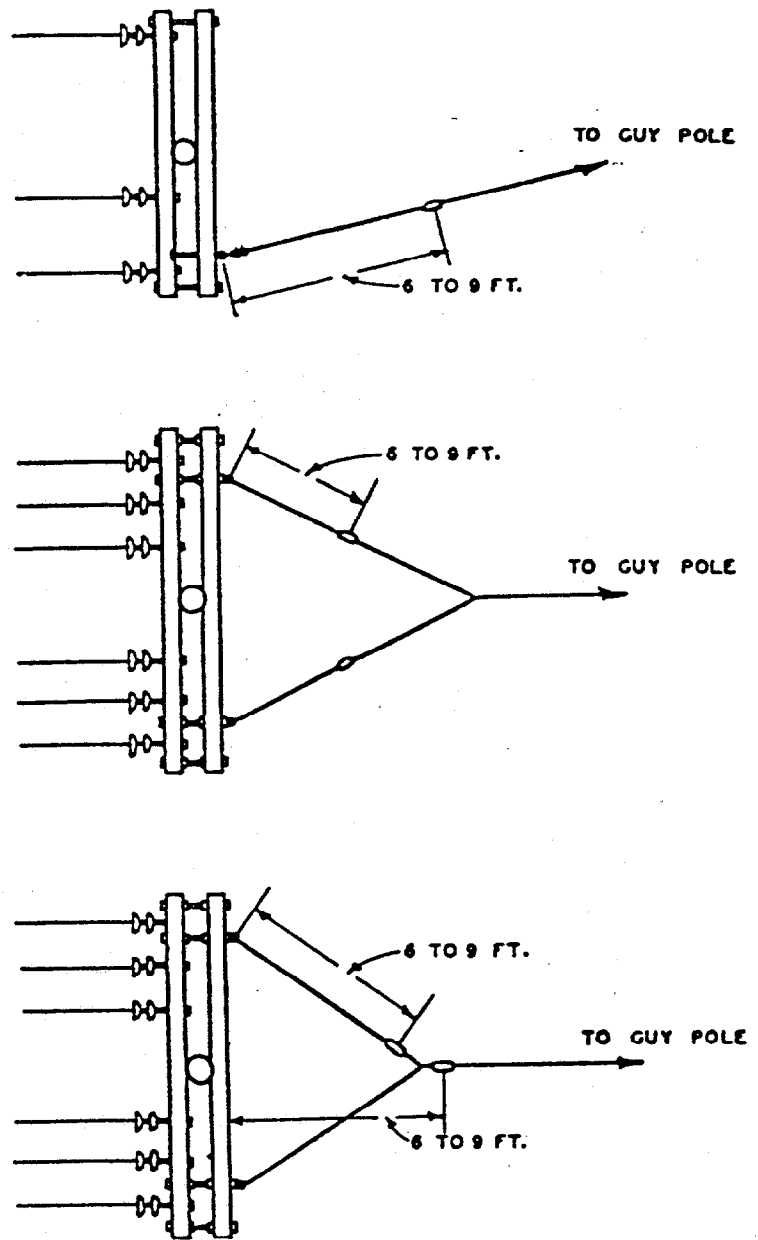


FIG. 50

SECTIONALIZATION OF
 SIDEWALK GUYS AND TRUSS GUYS
 RULES 86.7-B, 86.7-C, 86.7-B & 86.7-C.

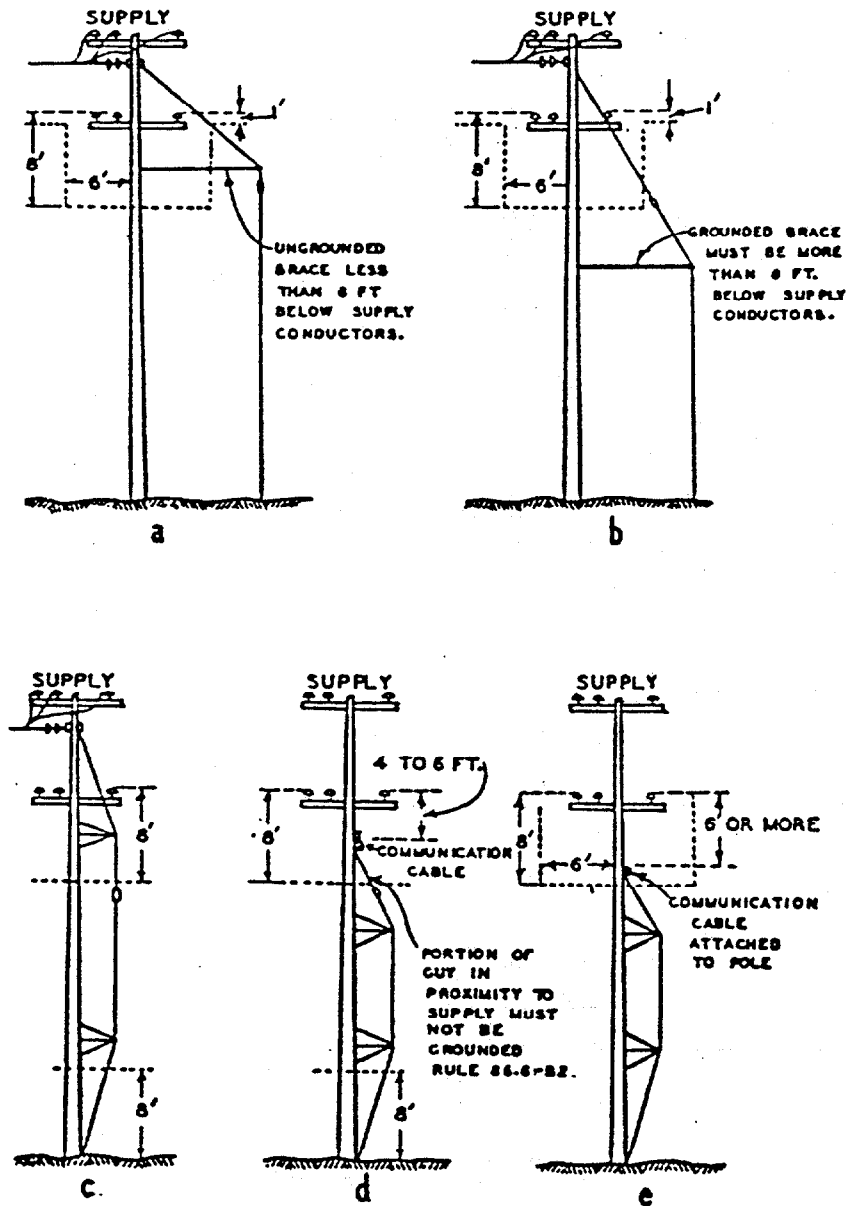


FIG. 51

GUYS EXPOSED TO SUPPLY CONDUCTORS
OF MORE THAN 20000 VOLTS
RULES 56.6-D & 56.6-C

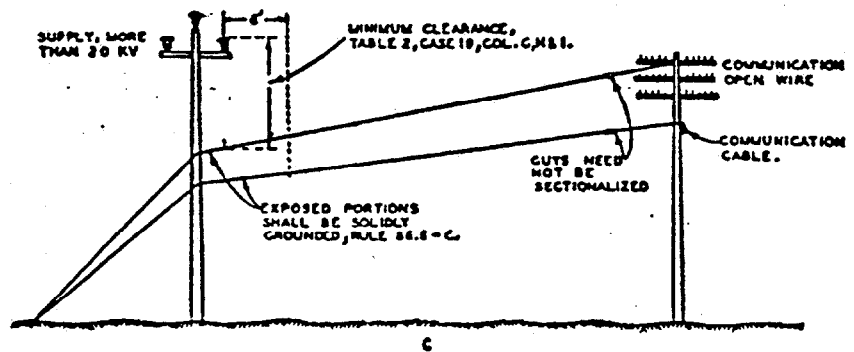
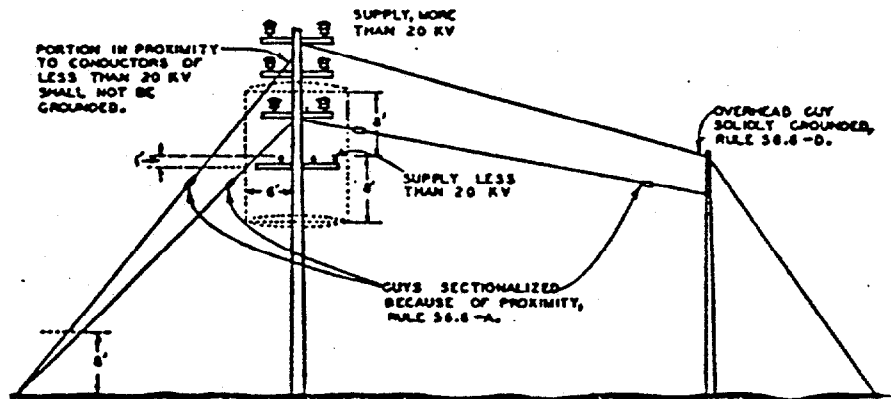
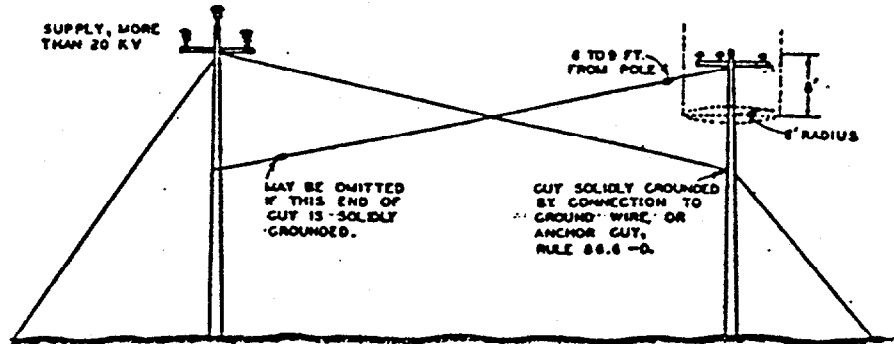
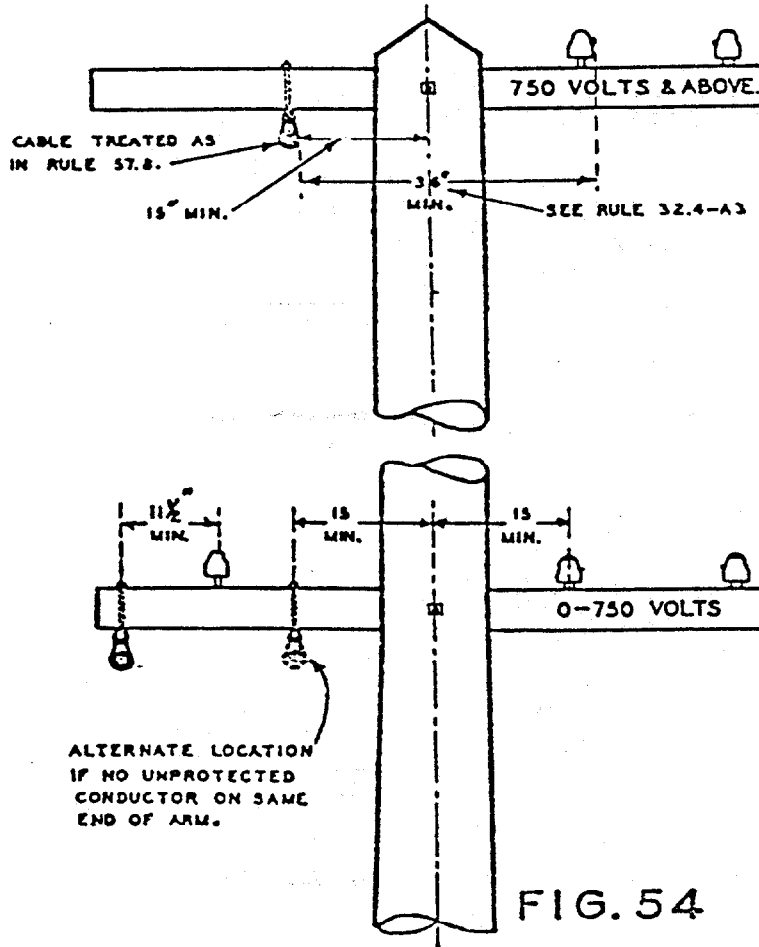
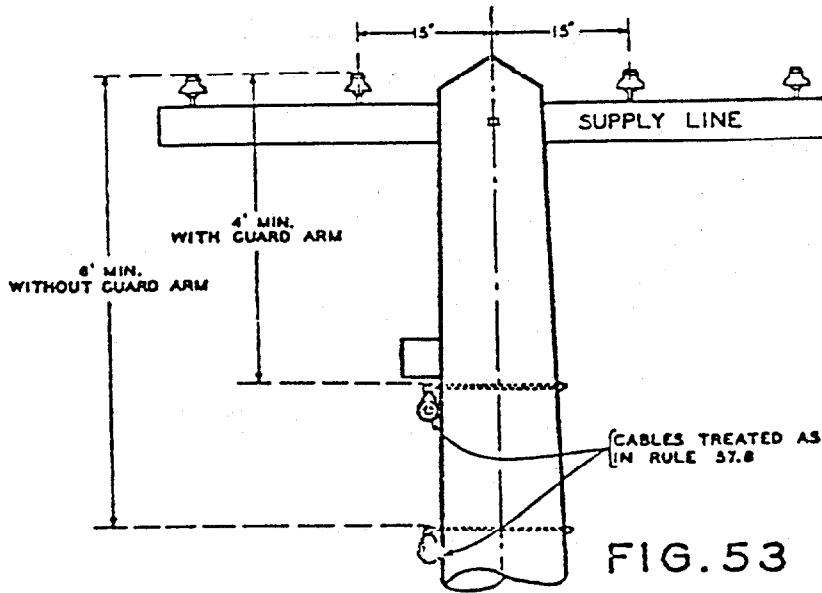
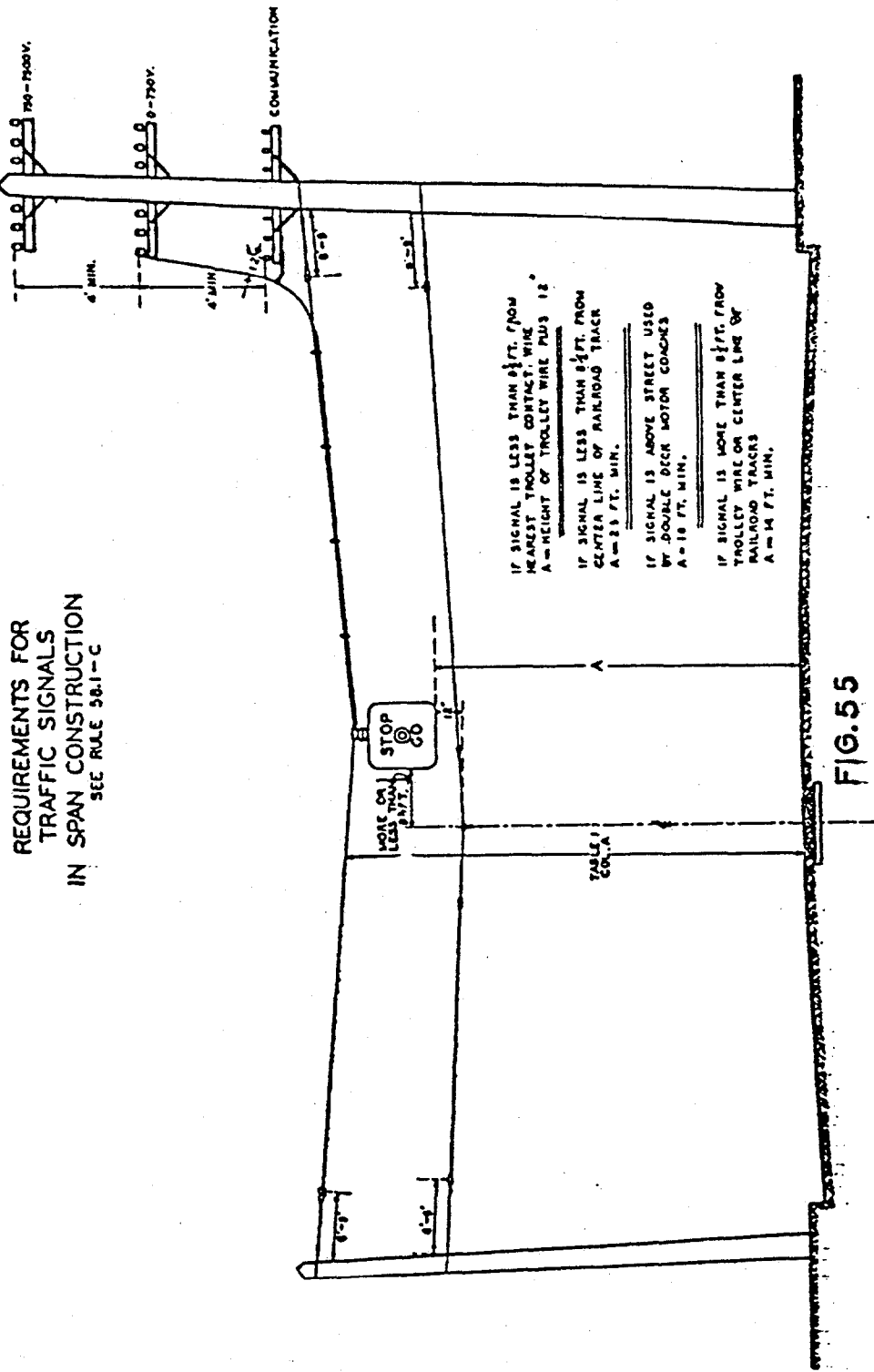


FIG. 52

SUPPLY CABLES
RULE 57.4-F





REQUIREMENTS FOR
STREET LAMPS
IN SPAN AND BRACKET CONSTRUCTION
RULES 58.2-B1 AND 58.2-B2.

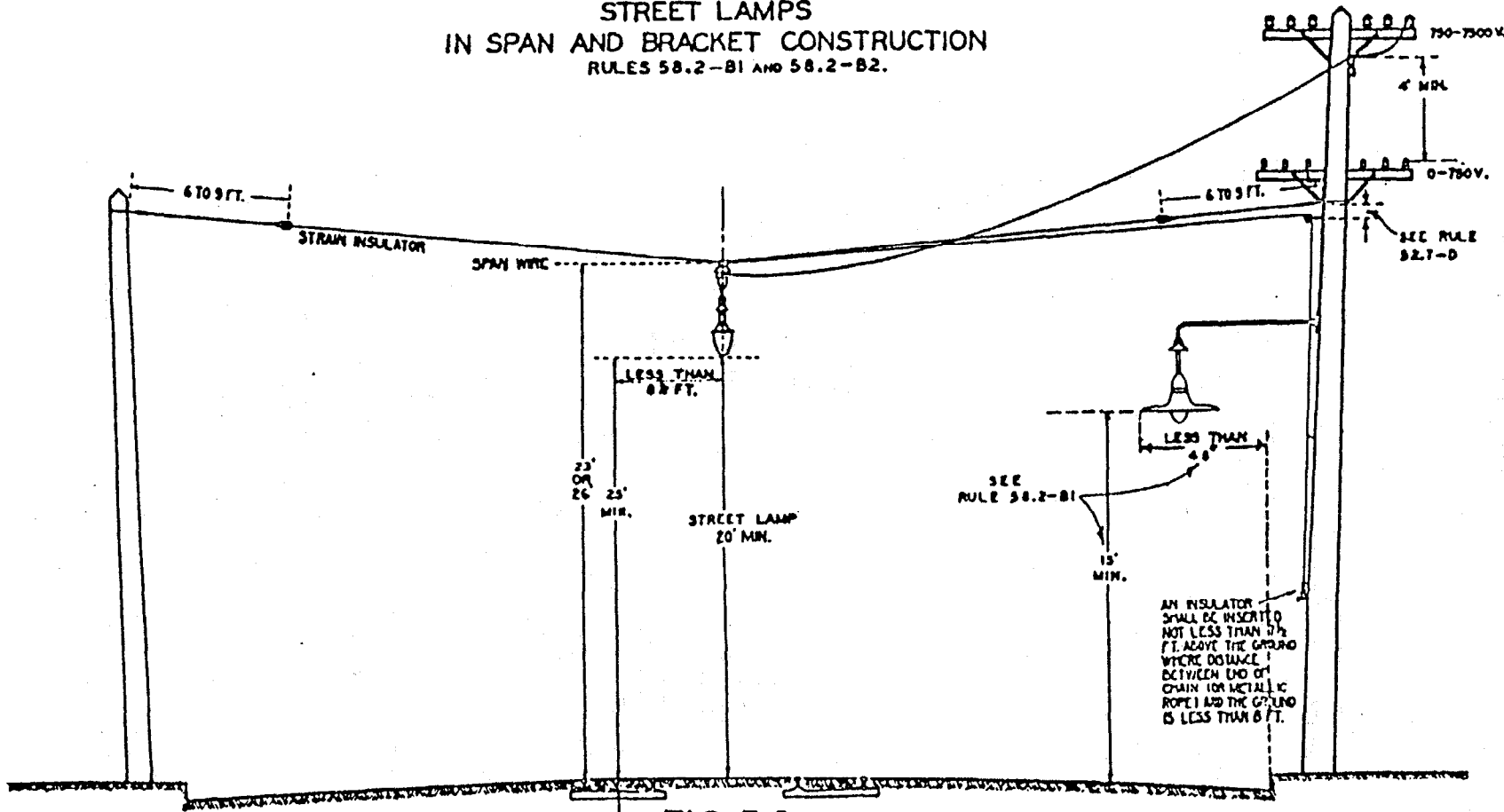


FIG. 56

GROUNDING OF TRANSFORMER WINDINGS
RULE 58.3-C1

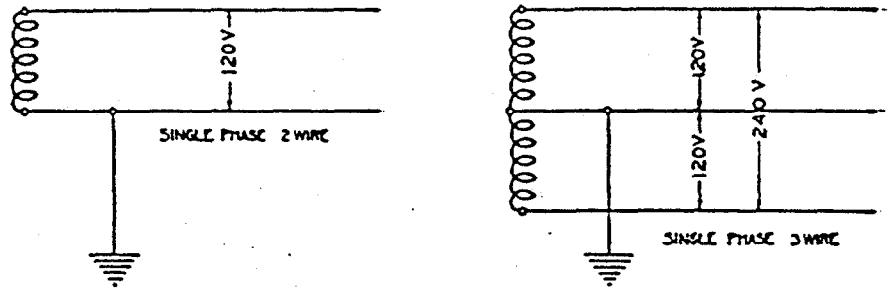


FIG. 57

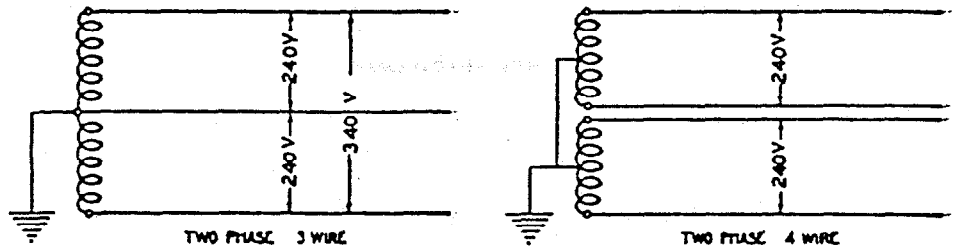


FIG. 58

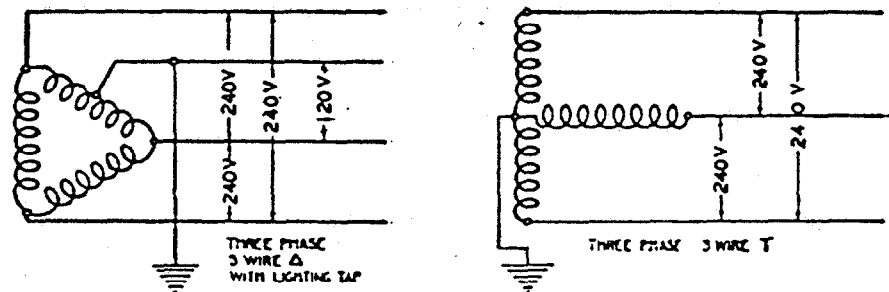
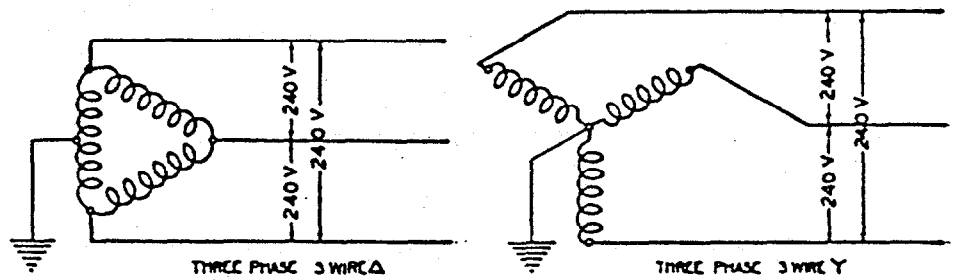


FIG. 59

RACK CONDUCTOR CLEARANCE
FROM SURFACE OF POLE

RULE 54.9-B1

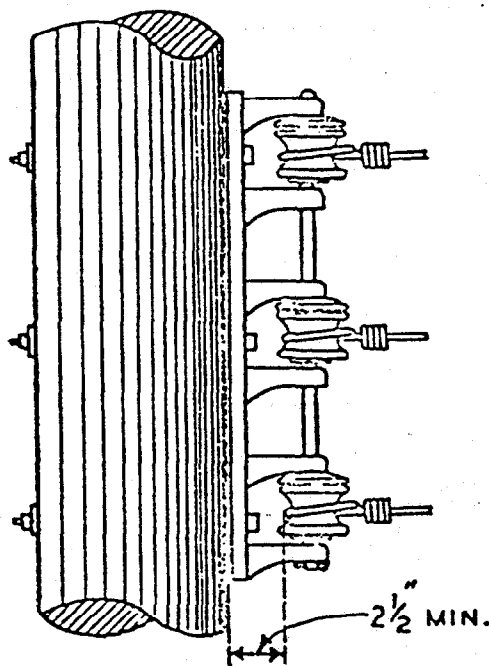
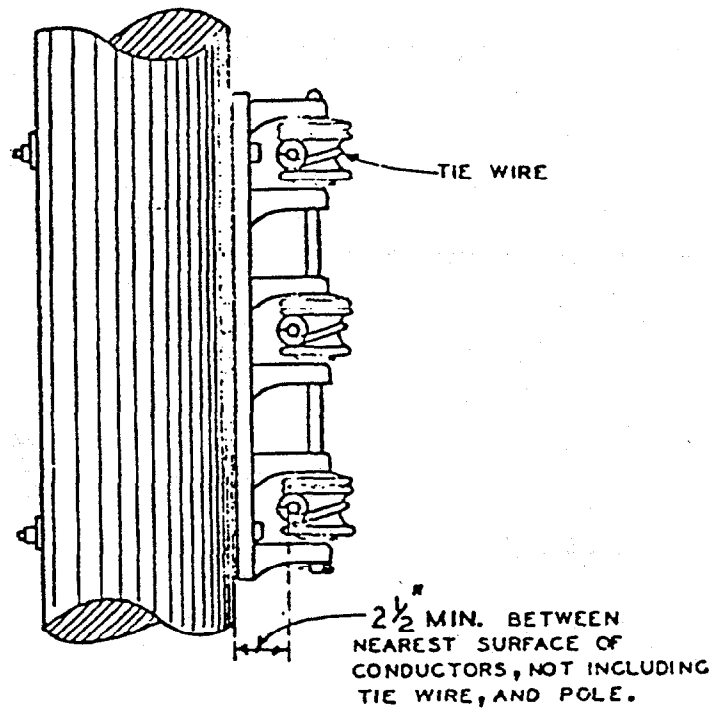


FIG. 60

Illustrative Diagrams
SUPPLY RISERS AND TERMINALS
 RULES 54.6-E AND 54.6-F

App. G

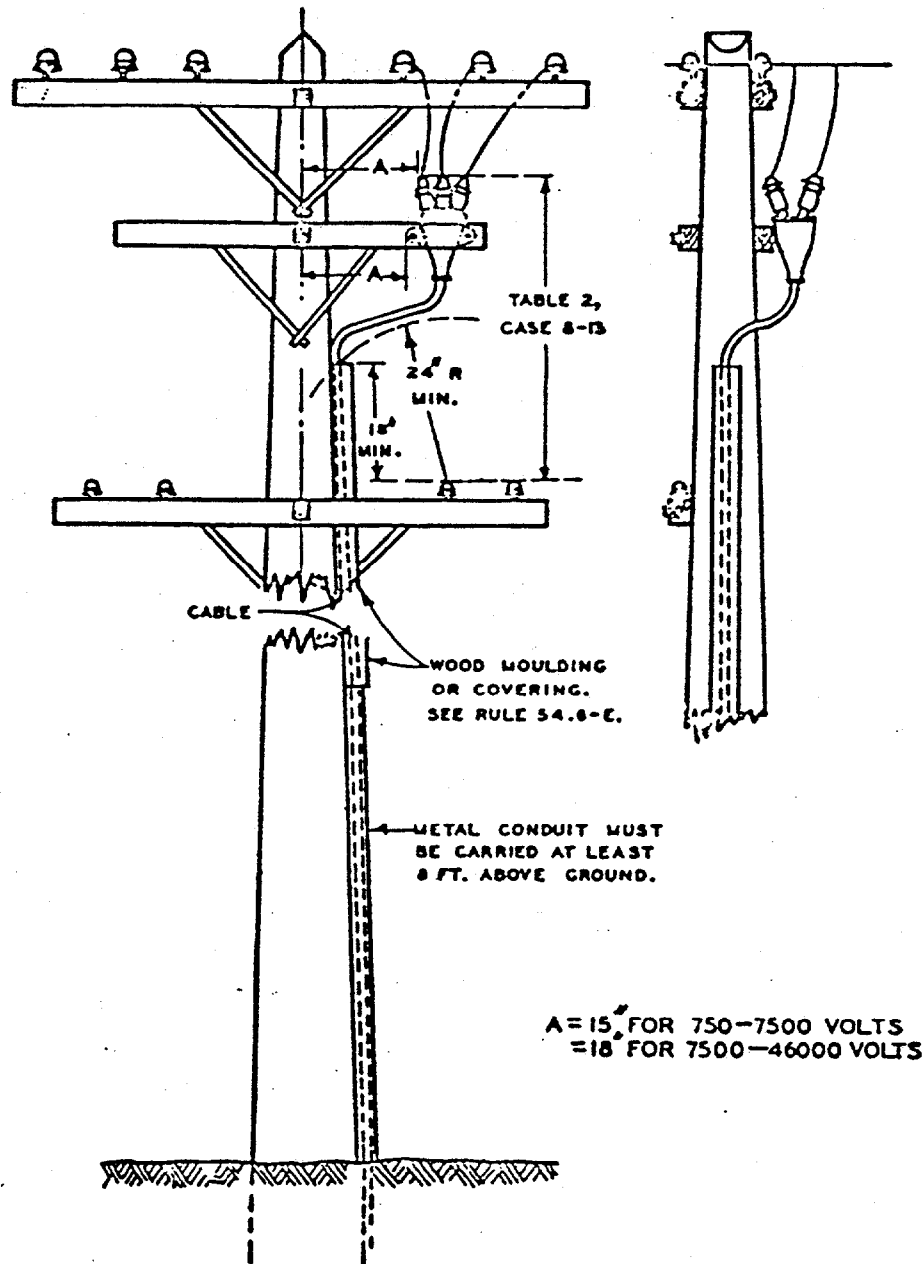
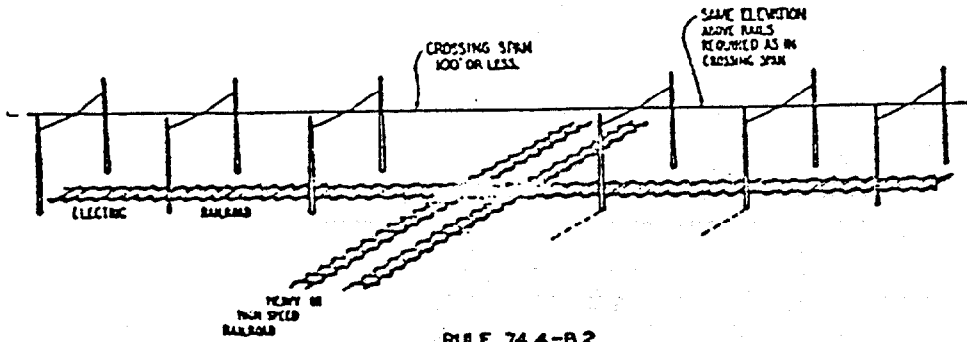
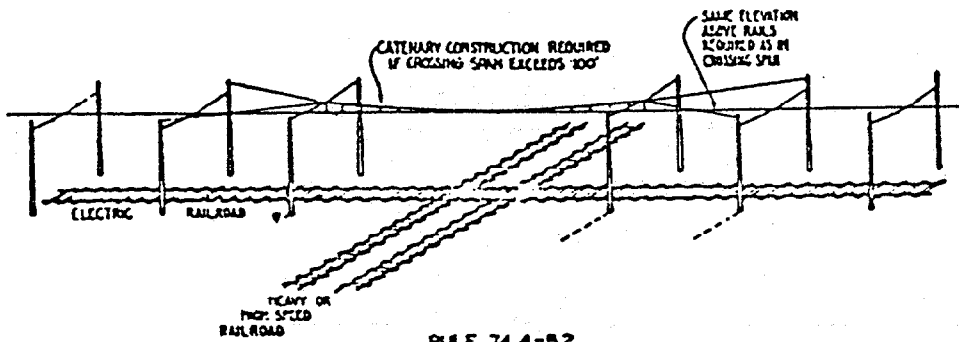


FIG. 61

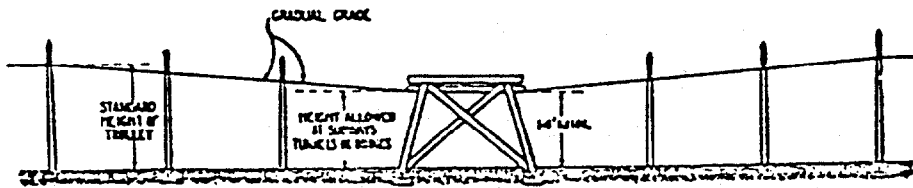
CONSTRUCTION REQUIREMENTS
OF TROLLEY CONTACT CONDUCTORS



RULE 74.4-B2
FIG.62

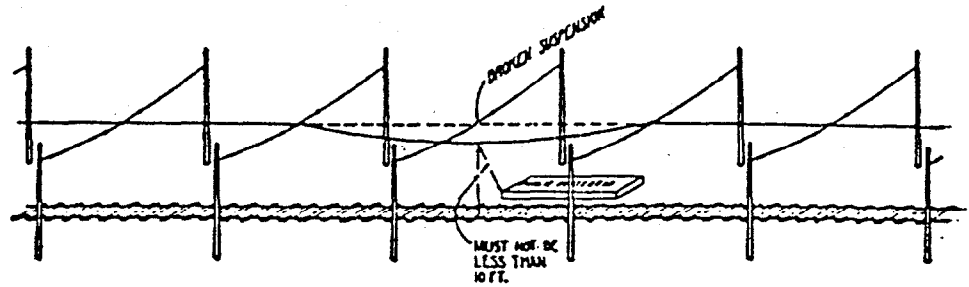


RULE 74.4-B2
FIG.63

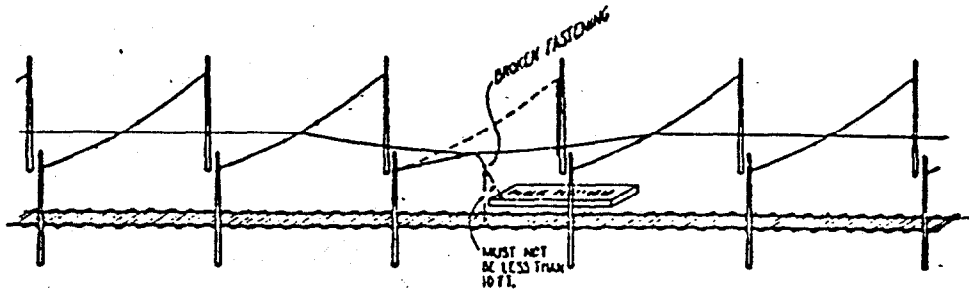


RULE 74.4-E
FIG.64

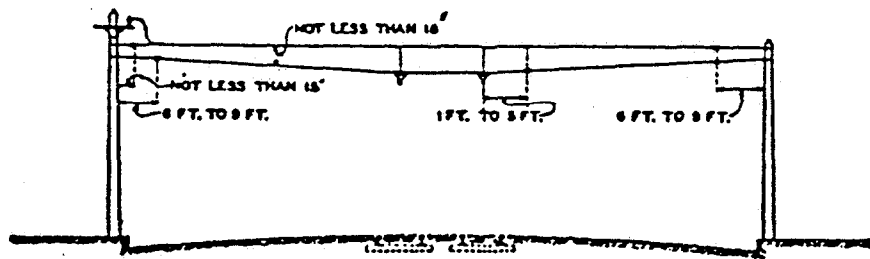
SPAN WIRE INSULATORS
FOR TROLLEY CONDUCTORS



RULE 74.4-F
FIG. 65



RULE 74.4-F
FIG. 66

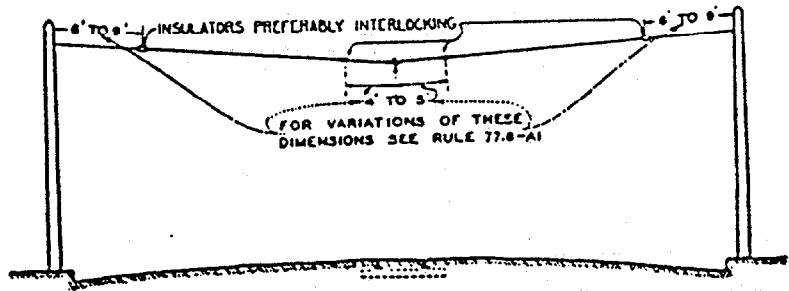


RULES 74.4-G3 AND 77.6-A5

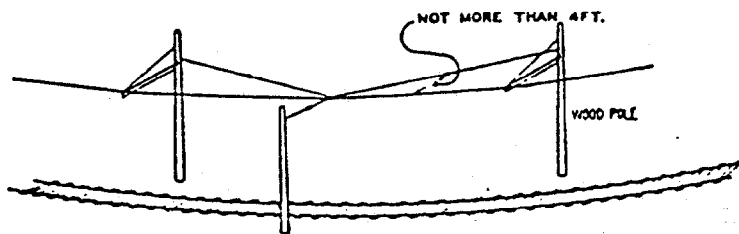
FIG. 67

Illustrative Diagrams

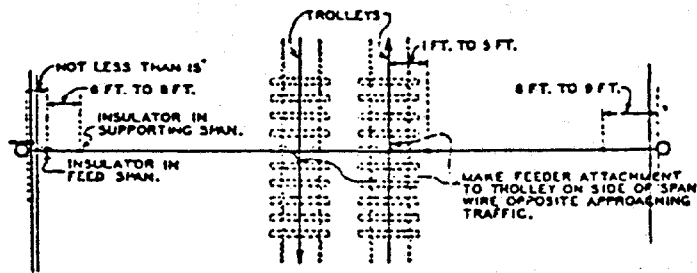
SPAN WIRE INSULATORS
FOR TROLLEY CONDUCTORS



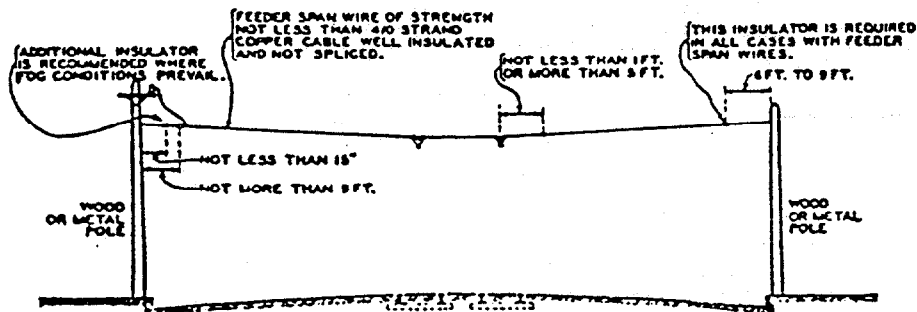
RULE 77.6-A1
FIG. 68



RULE 77.6-A1
FIG. 69

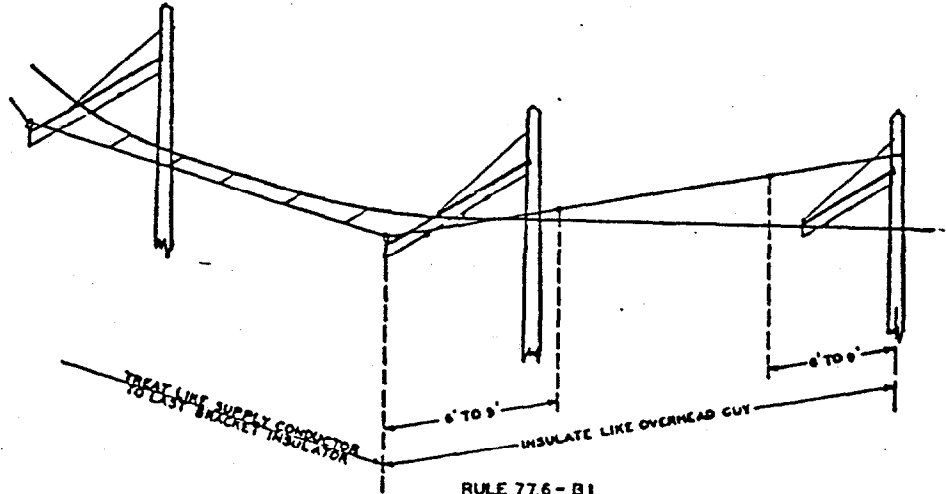


RULE 77.6-A5
FIG. 70

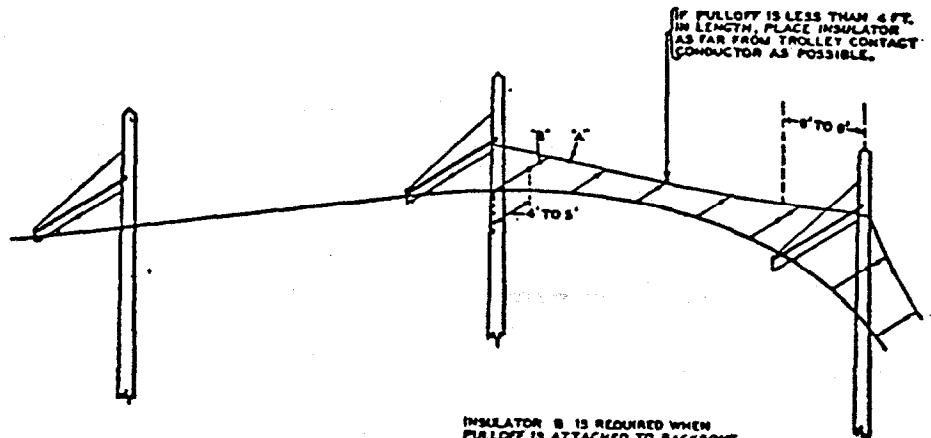


RULE 77.6-A4
FIG. 71

INSULATION OF BACKBONES & PULLOFFS

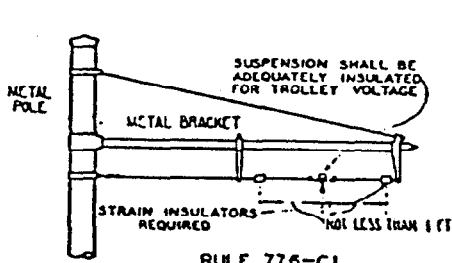


RULE 77.6-B1
FIG.72

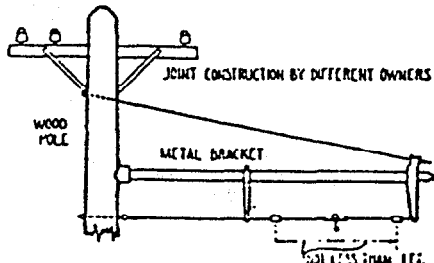


RULES 77.6-B2 AND 77.6-B3
FIG.73

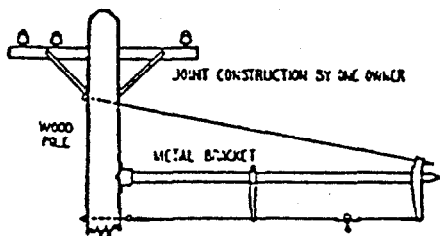
BRACKET WIRE INSULATORS
FOR TROLLEY CONTACT LINES



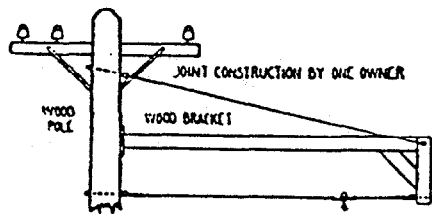
RULE 77.6-C1
FIG. 74



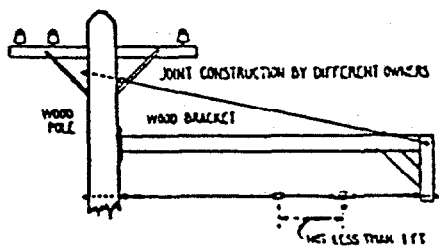
RULE 77.6-C1
FIG. 75



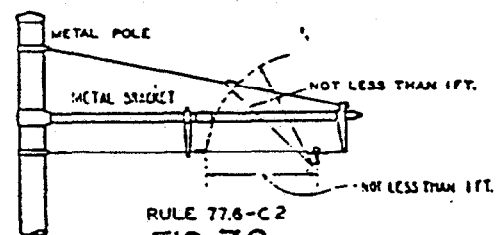
RULE 77.6-C2
FIG. 76



RULE 77.6-C2
FIG. 77

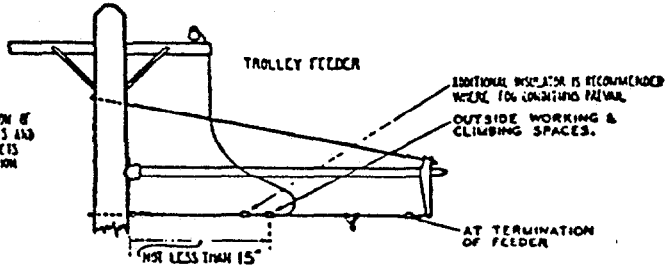


RULE 77.6-C2
FIG. 78



RULE 77.6-C2
FIG. 79

NOTE:
USE OF ANY COMBINATION OF
WOOD POLES AND BRACKETS AND
METAL POLES AND BRACKETS
REQUIRES SAME INSULATION
AS SHOWN HERE



RULE 77.6-C3
FIG. 80

HARDWOOD GROUND MOULDING
RULE 22.2

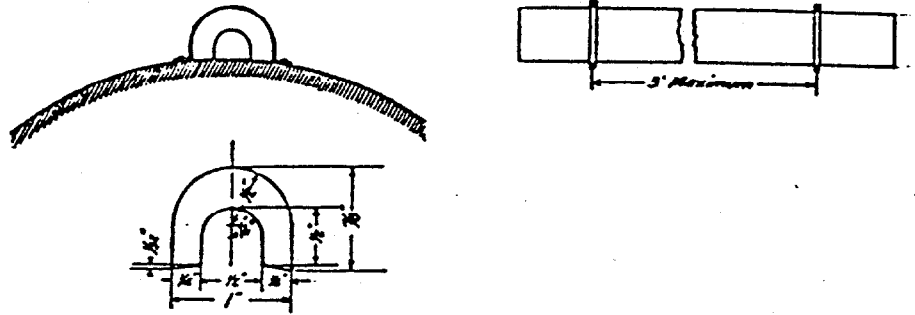


FIG. 81

PIPE OR CABLE COVERING
RULE 22.2

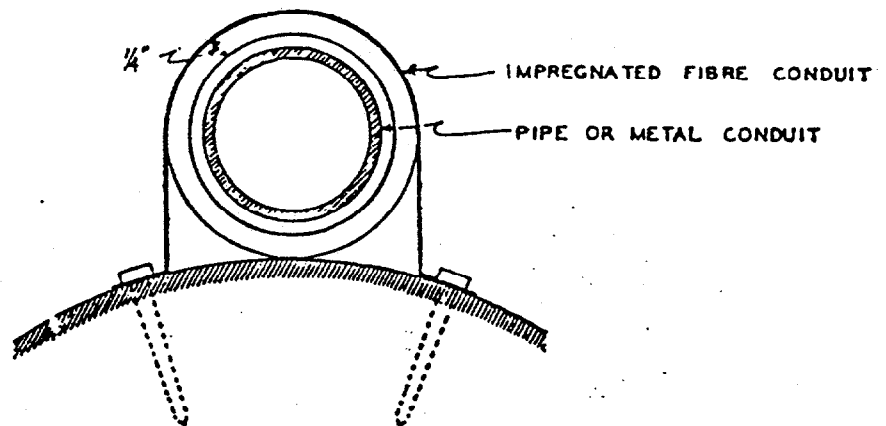


FIG. 82

CLEARANCE OF WIRES, EQUIPMENT ETC. ON POLES

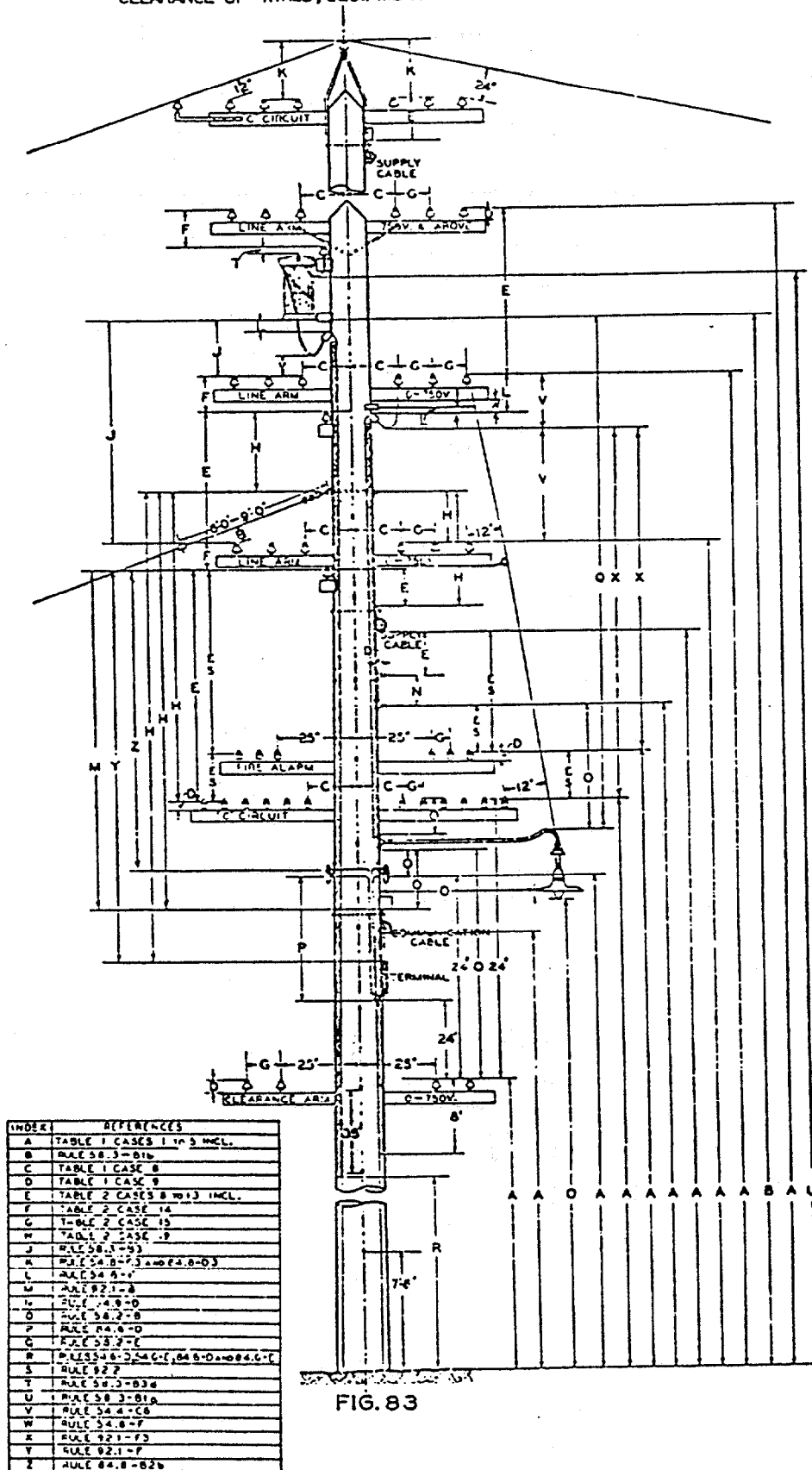
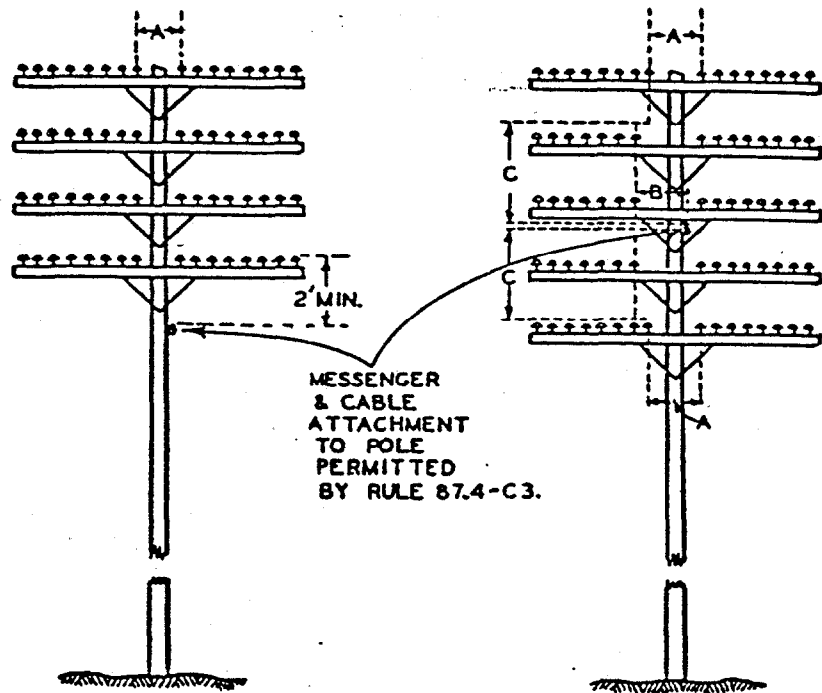


FIG. 83

CLEARANCES OF COMMUNICATION
WIRES AND CABLES



A = 30" MIN. OR 18" MIN.
B = 24" MIN. OR 18" MIN.
C = 36" MIN.
SEE RULES 84.4-D1
AND 87.4-C3.

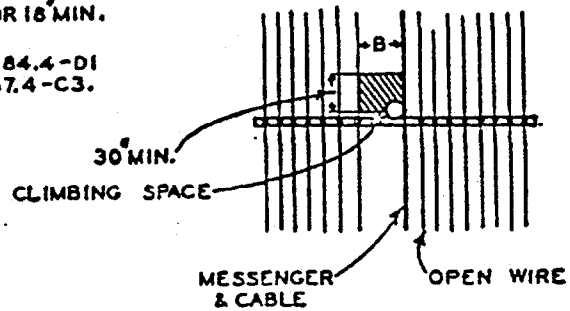
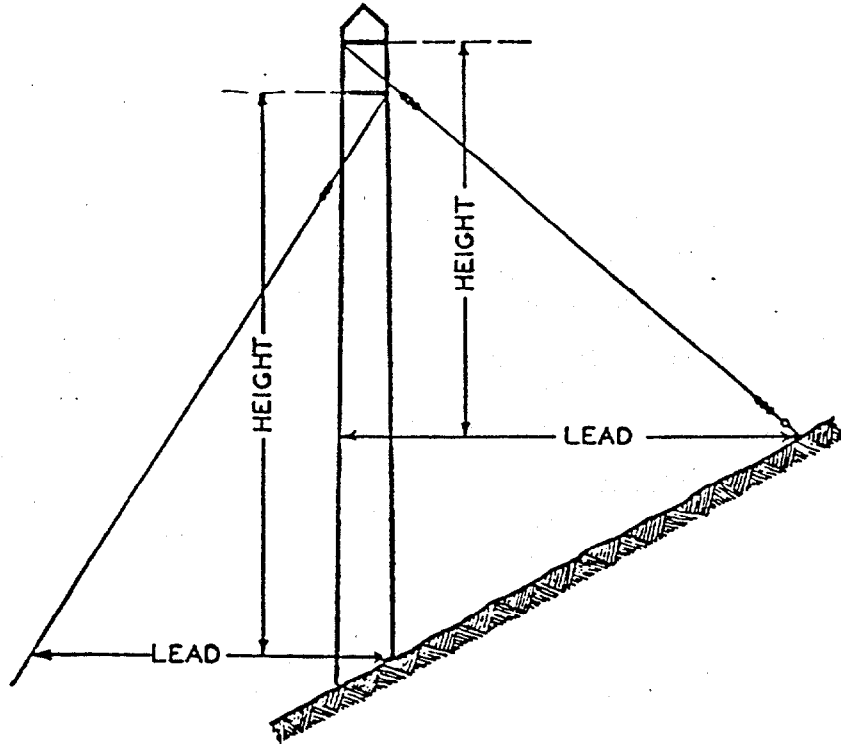


FIG. 84

GUYING TERMS

LEAD AND HEIGHT



CORNER ANGLES

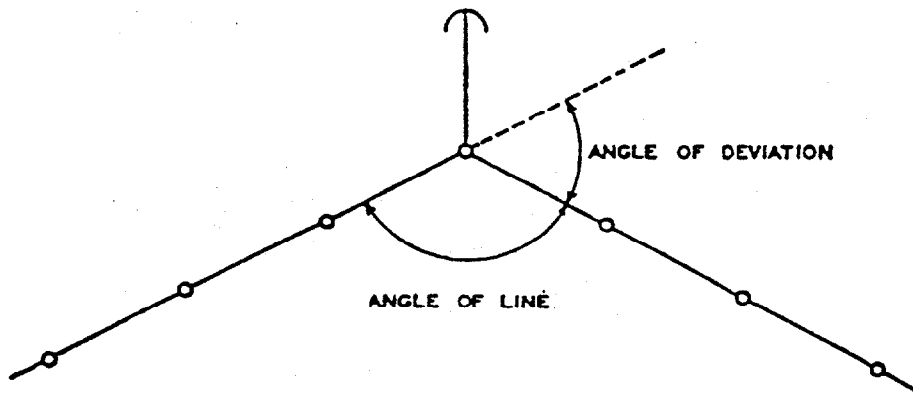


FIG. 85

QUADRANT OR SIDE OF POLE
FOR UNCOVERED RUNS OR RISERS
RULE B4.6-D

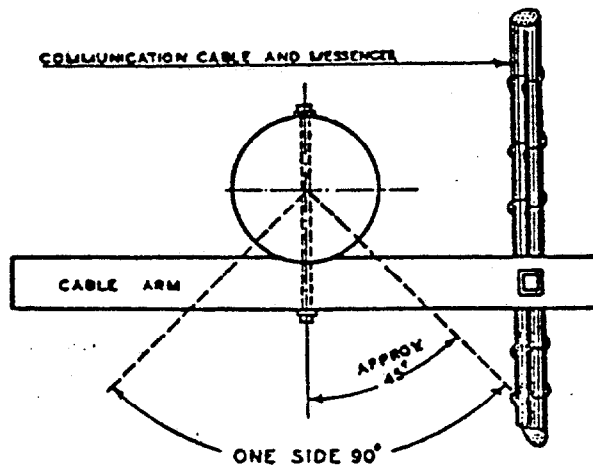
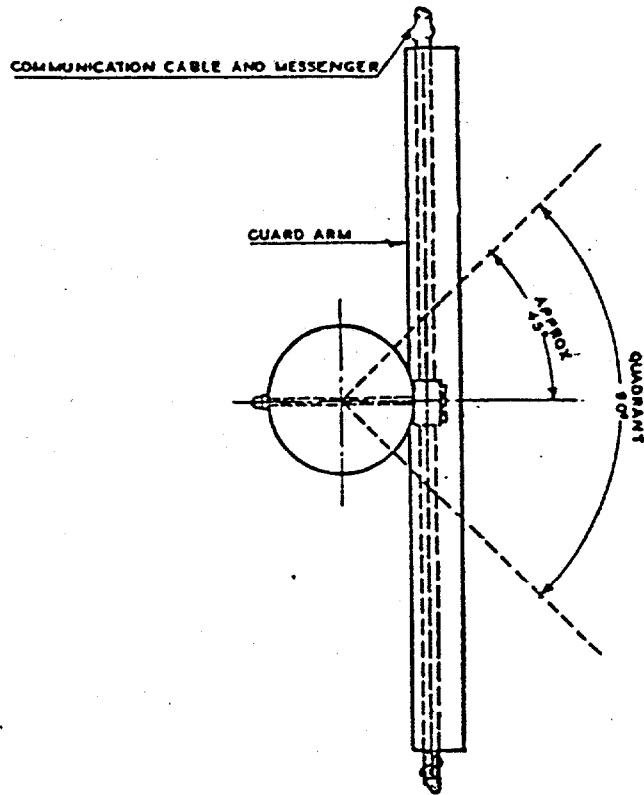


FIG. 86

APPENDIX G
PARTIAL UNDERGROUND
RULE 21.10

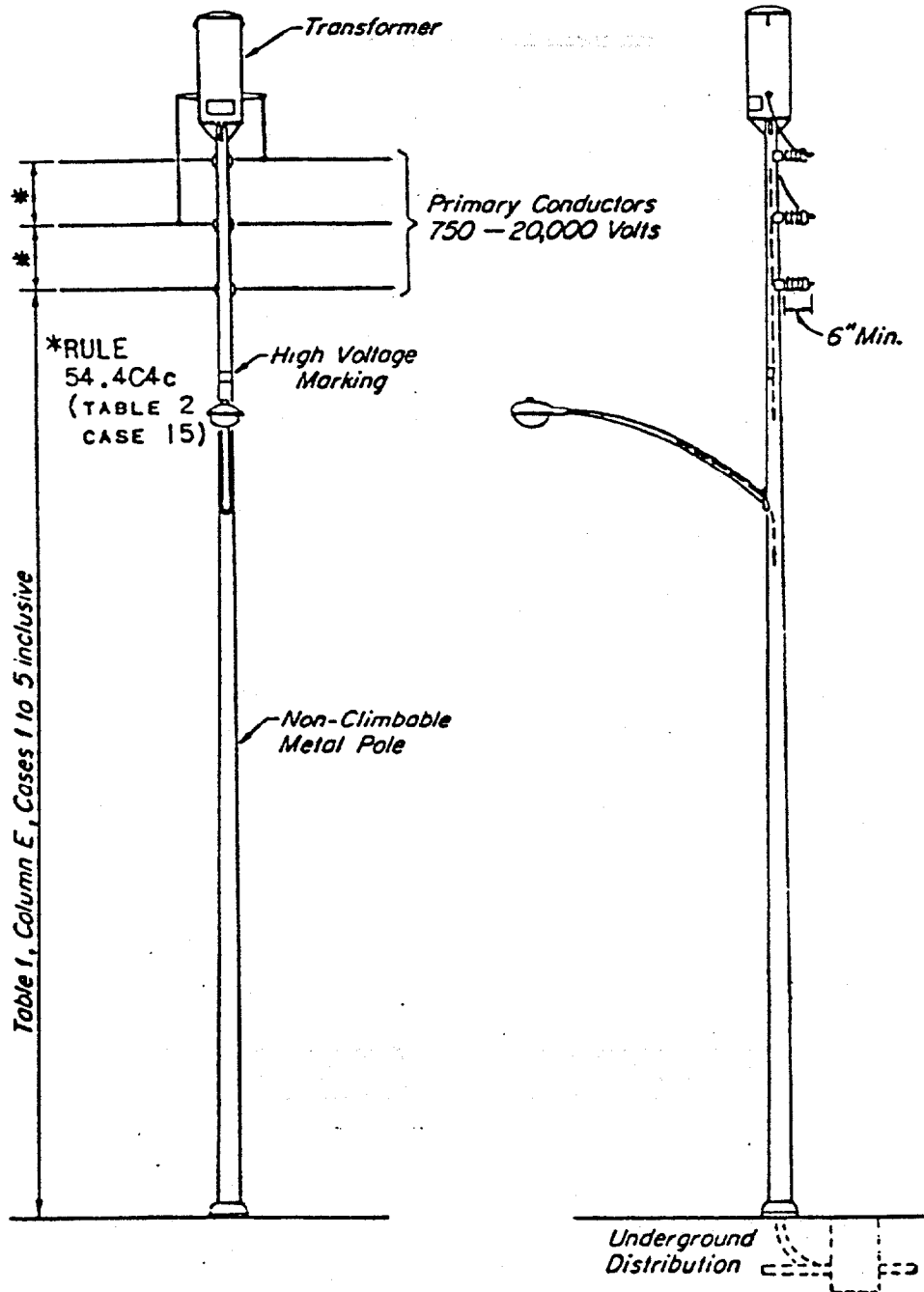
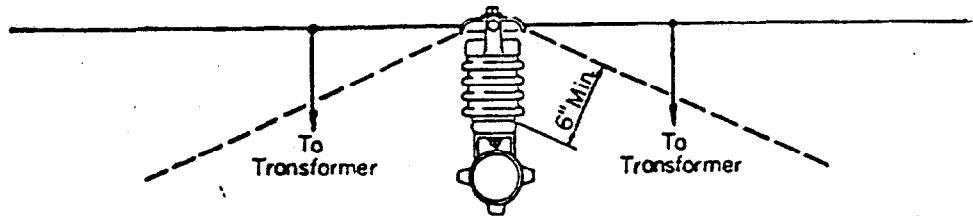
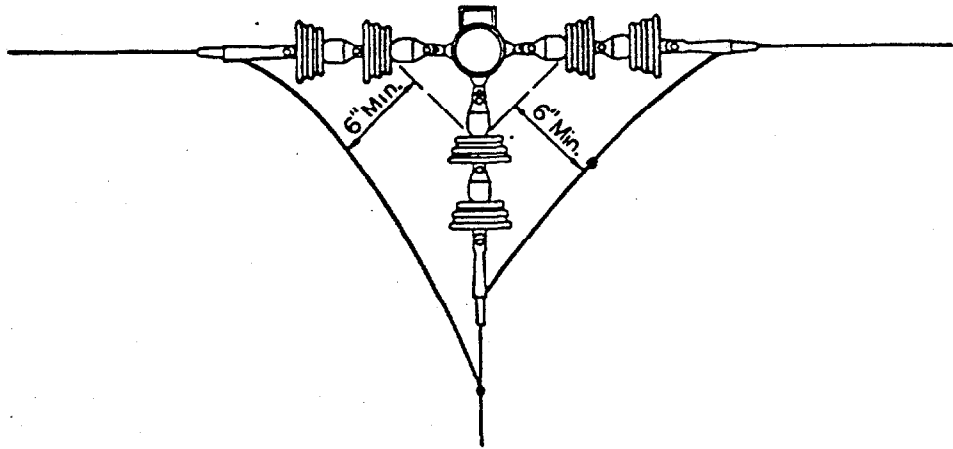


FIG. 87

CONDUCTOR CLEARANCE AND ARRANGEMENT
PARTIAL UNDERGROUND
RULE 54.4-02



TANGENT CONSTRUCTION



DEADEND CONSTRUCTION

FIG. 88