

Oregon Scenic Byway

PROPOSAL NAME: Vineyard and Valley State Scenic
Tour Route

PROPONENT: Washington County Visitors Association

CONTACT PERSON: Brian Harney



NARRATIVE: The Vineyard and Valley tour route winds 60 miles through scenic Washington County in Oregon's northern Willamette Valley. While only minutes from Portland, the route is rural in character, emphasizes the valley's noted agriculture and viticulture, and features numerous farms, wineries, orchards, vineyards, nurseries, and "u-picks." Scenery is varied and appealing, and consists of fertile plains, rolling hills covered with vineyards and forests, rugged Coast Range foothills, and majestic views of Cascade Mountain Range peaks, particularly Mt. Hood and Mt. St. Helens. Access to recreation such as camping, hiking, horseback riding, paddling, and fishing is offered nearby at the Tillamook State Forest, Stub Stewart State Park, Banks-Vernonia State Trail, Hagg Lake, and Tualatin River. The route also offers excellent wildlife viewing at four noted public wetlands, including the Tualatin River National Wildlife Refuge. Lodging, dining, shopping, and other services are readily available in nearby Forest Grove, Hillsboro, Sherwood, and other cities.

STRENGTHS: First route to showcase Oregon's vineyards, wineries and northern Willamette Valley.

CONCERNS: Volume of waypoints resulting from designing as a bidirectional route will require accurate and appropriate signage.

RECOMMENDATION: Approval as State Scenic Tour Route.

17 Wineries just minutes from Portland



Farm stands abound



Visit one of only ten urban wildlife refuges in the US

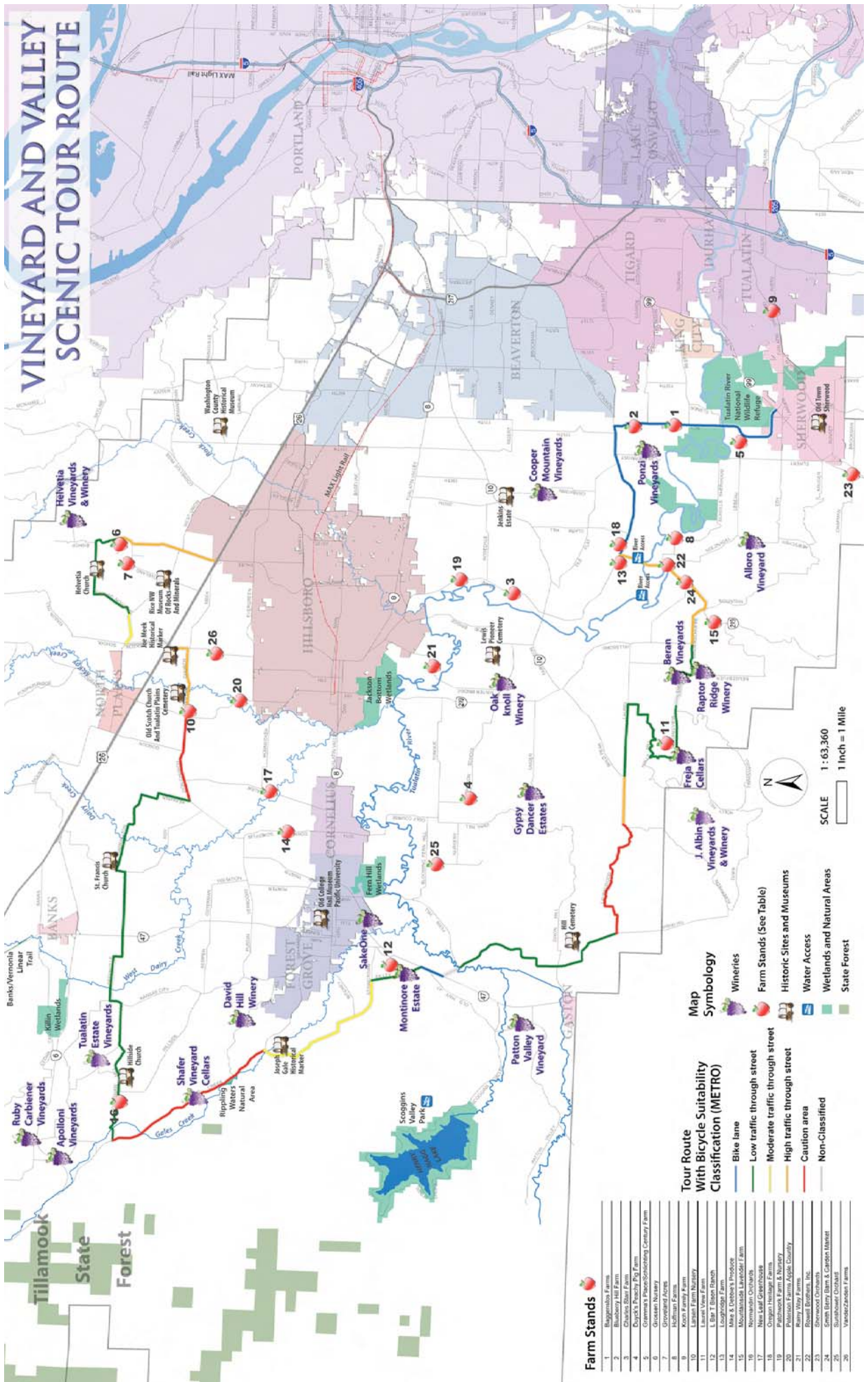


Meet the winemaker



A road less travelled

VINEYARD AND VALLEY SCENIC TOUR ROUTE



Farm Stands

1	Bluegrass Farm
2	Blueberry Hill Farms
3	Charles Starr Farm
4	Dryden's Peachy Pig Farm
5	Grimm's Peace-Schubert Cemetery Farm
6	Grosvonts Nursery
7	Grosvonts Acres
8	Hollman Farms
9	Levine Farm Winery
10	Levine View Farm
11	Levine View Farm
12	L. Blair T. Blinn Ranch
13	Longridge Farm
14	Maie & Debbie's Produce
15	Mountainside Lavender Farm
16	Northwest Orchards
17	Orchard Hillside Farms
18	Patzschke Farm & Nursery
19	Patzschke Farm & Nursery
20	Patzschke Farm & Nursery
21	Remy Wray Farm
22	Remy Wray Farm
23	Shorewood Orchards
24	Shorewood Orchards & Capital Market
25	St. John's Church
26	Vanduzee's Farm

- ### Tour Route With Bicycle Suitability Classification (METRO)
- Blue line: Bike lane
 - Green line: Low traffic through street
 - Yellow line: Moderate traffic through street
 - Orange line: High traffic through street
 - Red line: Caution area
 - Grey line: Non-Classified

- ### Map Symbology
- Winery icon: Wineries
 - Farm Stand icon: Farm Stands (See Table)
 - Historic Sites and Museums icon: Historic Sites and Museums
 - Water Access icon: Water Access
 - Wetlands and Natural Areas icon: Wetlands and Natural Areas
 - State Forest icon: State Forest



SCALE 1 : 63,360
1 inch = 1 Mile