



Water-Data Report UT-2005

10172700 VERNON CREEK NEAR VERNON, UT

Great Salt Lake Basin

LOCATION.--Lat 39°58'46", long 112°22'46" referenced to North American Datum of 1927, in NE ¼ SW ¼ sec.2, T.10 S., R.5 W., Tooele County, Hydrologic Unit 16020304, on right bank 6.6 mi upstream from confluence with Dutch Creek forming Faust Creek and 8.3 mi southeast of Vernon.

DRAINAGE AREA.--25.0 mi².

WATER-DISCHARGE RECORDS

REVISED RECORDS.--WDR UT-77-1: Drainage area.

PERIOD OF RECORD.--June 1958 to current year.

GAGE.--Water-stage recorder. Elevation of gage is 6,200 ft above NGVD of 1929, from AMS topographic map.

REMARKS.--Records good except for estimated daily discharges, which are fair.

EXTREMES FOR PERIOD OF RECORD.--Maximum discharge, 825 ft³/s, Aug 27, 1972, gage height, 5.70 ft, based on slope-area measurement; minimum daily, 0.41 ft³/s, Nov 20, 1961.

EXTREMES FOR CURRENT YEAR.--Peak discharges greater than base discharge of 10 ft³/s and (or) maximum (*):

Date	Time	Discharge (ft ³ /s)	Gage height (ft)
Apr 07	1915	27	1.46
Jul 19	2100	*70	*1.96

Minimum daily discharge, 1.2 ft³/s, Nov 16.

10172700 VERNON CREEK NEAR VERNON, UT —Continued

DISCHARGE, CUBIC FEET PER SECOND
WATER YEAR OCTOBER 2004 TO SEPTEMBER 2005
DAILY MEAN VALUES

[e, estimated]

Day	Oct	Nov	Dec	Jan	Feb	Mar	Apr	May	Jun	Jul	Aug	Sep
1	1.8	2.3	e1.9	2.7	2.5	2.7	3.7	17	13	7.6	7.2	5.6
2	1.9	2.3	e1.9	2.7	2.5	2.7	3.7	16	13	7.4	7.0	5.5
3	1.9	2.3	e2.0	2.7	2.5	2.7	3.7	16	12	7.4	6.9	5.5
4	1.9	2.3	e2.0	2.7	2.5	2.7	3.7	15	11	7.3	6.7	5.5
5	1.9	2.3	e2.1	2.7	3.1	2.7	3.7	14	11	7.4	6.6	5.4
6	1.9	2.3	2.1	2.7	3.2	2.7	3.7	20	11	7.1	6.4	5.4
7	1.9	2.3	2.3	e2.2	3.0	2.7	6.1	47	11	6.8	6.4	5.4
8	1.8	2.3	2.5	e2.6	2.9	2.7	9.5	33	11	6.7	6.2	5.4
9	1.8	2.3	2.5	2.9	e2.9	2.9	6.3	24	11	6.7	6.4	5.4
10	1.8	2.3	2.5	3.1	e3.1	2.9	5.1	e29	10	6.6	6.3	5.4
11	1.9	2.3	2.5	3.3	3.2	2.9	5.1	e36	10	6.7	6.2	5.4
12	1.9	2.3	2.5	3.4	3.2	2.9	7.1	37	10	6.7	6.0	5.4
13	1.9	2.3	2.5	3.3	3.2	2.9	9.4	27	9.8	6.8	5.7	5.5
14	1.9	2.3	2.5	3.2	3.2	2.9	7.5	21	9.6	7.2	5.7	5.5
15	1.9	2.2	2.5	3.1	3.2	2.9	8.8	19	9.2	7.2	5.7	5.4
16	1.9	2.1	2.5	2.9	3.0	2.9	12	21	8.8	7.2	6.0	5.4
17	1.9	2.1	2.5	2.8	2.9	2.9	21	27	8.8	7.2	5.7	5.4
18	1.9	2.1	2.5	2.9	2.9	2.9	23	21	8.8	7.2	5.6	5.4
19	3.0	2.1	2.5	2.9	2.9	2.9	14	20	8.6	7.2	5.6	5.4
20	6.7	2.1	2.5	2.8	2.9	2.9	10	24	8.5	7.2	5.4	5.4
21	3.0	2.1	2.5	2.7	2.9	2.9	8.4	25	8.4	7.1	5.4	5.6
22	2.8	2.1	2.5	2.7	2.9	2.9	7.8	22	8.1	7.2	5.4	5.7
23	2.5	2.1	e2.3	2.8	2.7	3.5	7.6	20	8.0	7.2	5.4	5.7
24	2.7	2.1	e1.9	3.4	2.8	3.7	27	19	7.8	7.2	5.4	5.7
25	2.7	2.1	e2.1	3.3	2.9	3.7	16	17	7.7	7.2	5.3	5.7
26	2.4	2.1	2.1	3.1	2.9	3.7	19	16	7.8	7.2	5.4	5.7
27	2.4	2.1	2.7	2.9	2.8	3.7	18	15	7.6	7.1	5.4	5.7
28	2.9	e2.0	2.7	2.9	2.7	3.7	26	14	7.8	7.1	5.3	5.7
29	2.7	e1.9	2.7	2.9	---	3.7	34	13	7.8	7.1	5.3	5.7
30	2.5	e1.6	2.7	2.7	---	3.7	19	14	7.6	7.2	5.3	5.7
31	2.4	---	2.7	2.5	---	3.7	---	13	---	7.1	5.6	---
Total	72.5	65.1	73.7	89.5	81.4	95.3	349.9	672	284.7	220.3	182.9	165.6
Mean	2.34	2.17	2.38	2.89	2.91	3.07	11.7	21.7	9.49	7.11	5.90	5.52
Max	6.7	2.3	2.7	3.4	3.2	3.7	34	47	13	7.6	7.2	5.7
Min	1.8	1.6	1.9	2.2	2.5	2.7	3.7	13	7.6	6.6	5.3	5.4
Ac-ft	144	129	146	178	161	189	694	1,330	565	437	363	328

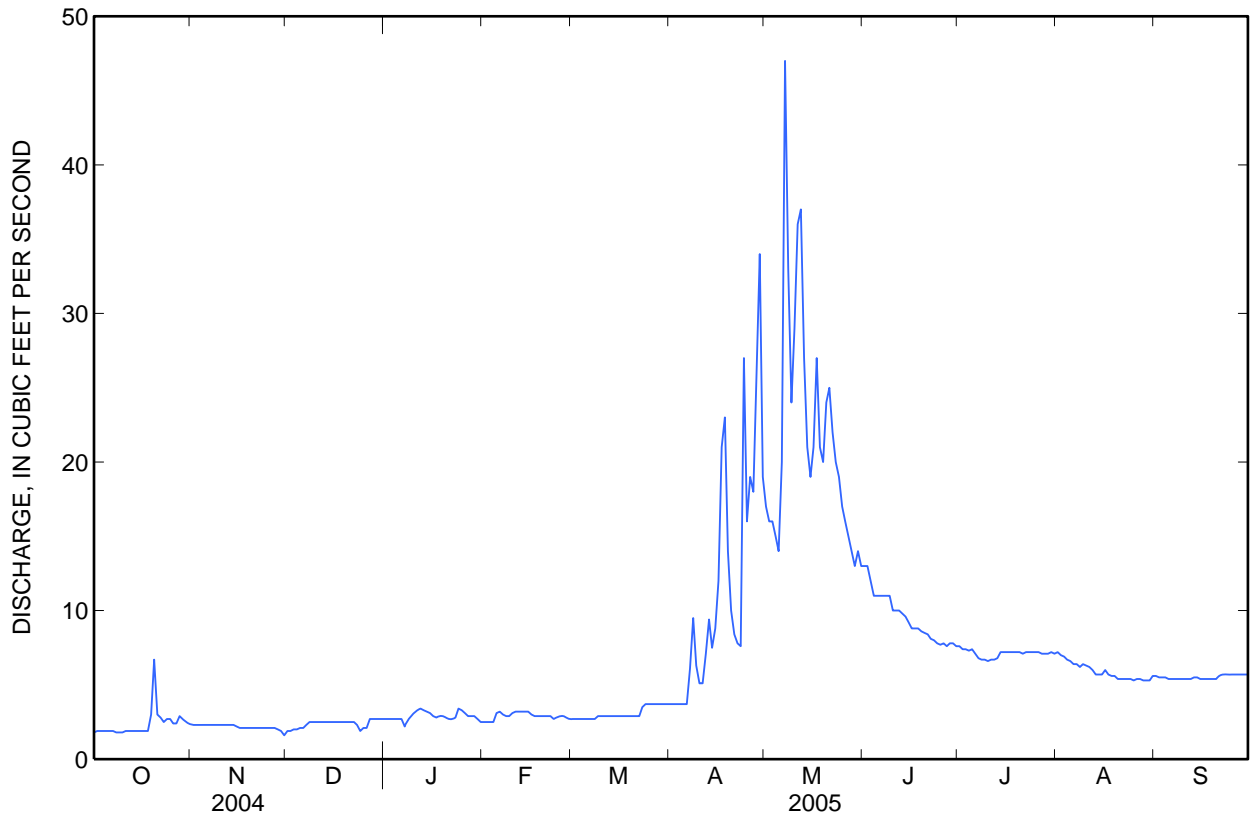
STATISTICS OF MONTHLY MEAN DATA FOR WATER YEARS 1959 - 2005, BY WATER YEAR (WY)

	Oct	Nov	Dec	Jan	Feb	Mar	Apr	May	Jun	Jul	Aug	Sep
Mean	3.04	2.99	2.88	2.87	2.94	3.39	5.64	6.78	4.26	3.40	3.10	3.04
Max	9.08	8.89	7.93	7.92	7.65	9.30	21.6	40.0	19.3	12.3	10.1	9.61
(WY)	(1984)	(1985)	(1985)	(1985)	(1985)	(1985)	(1983)	(1983)	(1983)	(1983)	(1983)	(1983)
Min	1.06	1.20	1.23	1.08	1.32	1.42	1.42	1.20	1.20	1.05	1.01	1.11
(WY)	(1960)	(1960)	(1960)	(1961)	(1961)	(1961)	(1961)	(1961)	(1961)	(1961)	(1961)	(1959)

10172700 VERNON CREEK NEAR VERNON, UT —Continued

SUMMARY STATISTICS

	Calendar Year 2004		Water Year 2005		Water Years 1959 - 2005	
Annual total	837.0		2,352.9			
Annual mean	2.29		6.45		3.70	
Highest annual mean					12.0	1983
Lowest annual mean					1.26	1961
Highest daily mean	6.9	Apr 8	47	May 7	70	Apr 24, 1983
Lowest daily mean	1.4	Jul 8	1.6	Nov 30	0.84	Dec 18, 1967
Annual seven-day minimum	1.4	Jul 8	1.9	Oct 4	0.93	Jul 21, 1961
Annual runoff (ac-ft)	1,660		4,670		2,680	
10 percent exceeds	2.9		14		7.1	
50 percent exceeds	2.3		3.7		2.5	
90 percent exceeds	1.5		2.1		1.5	





Water-Data Report UT-2005

10172727 FAUST CREEK NEAR VERNON, UT

Great Salt Lake Basin

LOCATION.--Lat 40°09'38", long 112°25'49" referenced to North American Datum of 1927, in NE ¼ SE ¼ SW ¼ sec.32, T.7 S., R.5 W., Tooele County, Hydrologic Unit 16020304, on left bank 80 ft west of State Highway 36, approximately 1 mi south of Faust, and 4.5 mi north of Vernon.

DRAINAGE AREA.--145 mi².

WATER-DISCHARGE RECORDS

PERIOD OF RECORD.--October 1991 to September 1998, October 2003 to current year.

GAGE.--Water-stage recorder. Elevation of gage is 5,265 above NGVD of 1929, from topographic map. Prior to October 15, 1997 at site 50 ft downstream at different datum.

REMARKS.--Records poor.

EXTREMES FOR PERIOD OF RECORD.--Maximum discharge, 26 ft³/s Jul 17, 2004, gage height, 5.91 ft, at gage datum then in use; minimum daily discharge, 0.07 ft³/s Jun 27, 28 and Jul 12, 13, 2004.

EXTREMES FOR CURRENT YEAR.--Maximum discharge, 14 ft³/s, May 30, gage height, 6.86 ft; minimum daily discharge, 0.51 ft³/s, Jul 18.

10172727 FAUST CREEK NEAR VERNON, UT—Continued

DISCHARGE, CUBIC FEET PER SECOND
WATER YEAR OCTOBER 2004 TO SEPTEMBER 2005
DAILY MEAN VALUES
[e, estimated]

Day	Oct	Nov	Dec	Jan	Feb	Mar	Apr	May	Jun	Jul	Aug	Sep
1	2.2	1.3	1.2	1.7	1.5	1.0	0.73	1.5	7.2	3.3	1.3	1.1
2	2.7	1.2	1.1	1.7	1.4	0.99	0.73	1.4	6.5	1.8	1.1	1.1
3	3.0	1.3	1.1	1.8	1.4	1.00	0.69	1.5	7.0	1.5	1.1	1.1
4	3.0	1.3	1.1	2.0	1.4	0.96	0.76	1.6	6.7	1.9	1.4	0.97
5	3.2	1.3	1.1	2.0	1.4	0.93	0.76	2.2	5.3	1.3	1.1	1.5
6	3.3	1.2	1.1	2.0	1.4	0.91	0.72	2.3	6.0	1.3	1.1	1.3
7	3.0	1.2	1.1	2.1	1.5	0.88	0.68	3.5	8.1	1.0	1.0	1.4
8	3.2	1.3	1.3	2.1	1.7	0.87	0.70	3.0	7.0	0.88	0.95	1.5
9	2.9	1.3	1.7	2.1	1.6	0.86	0.96	2.7	6.4	0.74	1.3	1.2
10	2.7	1.3	1.6	2.7	1.3	0.84	0.78	3.2	5.7	0.70	2.1	1.1
11	3.3	1.4	1.6	2.7	1.3	0.83	0.72	5.1	6.6	0.59	1.5	1.1
12	3.5	1.6	1.5	2.1	1.7	0.82	0.71	7.3	6.4	0.66	1.1	1.1
13	3.2	1.3	1.4	2.1	1.4	0.79	0.66	6.0	5.3	0.86	0.97	1.9
14	2.9	1.3	1.4	1.9	1.4	0.77	0.67	4.9	5.7	0.67	0.94	1.9
15	2.7	1.2	1.4	1.8	1.5	0.79	0.71	4.7	5.2	0.69	1.0	1.1
16	2.5	1.2	1.4	1.8	1.4	0.78	0.72	5.4	4.6	0.69	1.4	1.2
17	2.4	1.2	1.4	1.8	1.4	0.78	0.68	8.7	3.7	0.66	1.5	1.5
18	2.9	1.1	1.4	1.8	1.3	0.78	0.70	8.3	3.3	0.51	0.79	1.3
19	2.4	1.1	1.4	1.7	1.4	0.77	0.92	8.0	2.4	0.53	0.76	1.0
20	4.0	1.1	1.3	1.7	1.4	0.91	0.88	6.4	1.4	0.70	0.98	1.1
21	3.2	1.1	1.5	1.7	1.3	0.90	0.81	6.9	1.6	0.93	1.1	1.4
22	2.1	1.1	1.5	1.6	1.3	0.86	0.79	7.7	1.9	0.90	1.1	1.3
23	1.8	1.1	1.8	1.6	1.2	1.3	0.78	7.7	2.5	0.90	1.6	1.5
24	2.9	1.1	1.4	1.6	e1.2	1.0	1.3	7.2	2.8	1.0	1.4	2.1
25	3.2	1.3	1.6	1.6	e1.2	0.89	1.2	7.5	2.3	1.4	1.5	2.0
26	2.1	1.4	1.3	1.6	e1.1	0.82	1.1	6.8	1.7	1.3	1.9	2.5
27	1.7	1.4	1.5	1.9	e1.1	0.76	0.90	7.2	1.3	1.1	2.0	2.6
28	1.6	1.8	1.6	1.7	e1.0	0.82	1.1	7.1	1.2	1.0	1.5	2.4
29	1.5	1.7	2.0	1.6	---	0.93	1.8	5.8	1.9	1.2	1.3	1.5
30	1.4	1.2	1.7	1.5	---	0.95	1.7	11	2.5	0.89	0.93	1.5
31	1.4	---	1.7	1.5	---	0.80	---	9.8	---	0.98	1.1	---
Total	81.9	38.4	44.2	57.5	38.2	27.29	26.36	172.4	130.2	32.58	38.82	44.27
Mean	2.64	1.28	1.43	1.85	1.36	0.88	0.88	5.56	4.34	1.05	1.25	1.48
Max	4.0	1.8	2.0	2.7	1.7	1.3	1.8	11	8.1	3.3	2.1	2.6
Min	1.4	1.1	1.1	1.5	1.0	0.76	0.66	1.4	1.2	0.51	0.76	0.97
Ac-ft	162	76	88	114	76	54	52	342	258	65	77	88

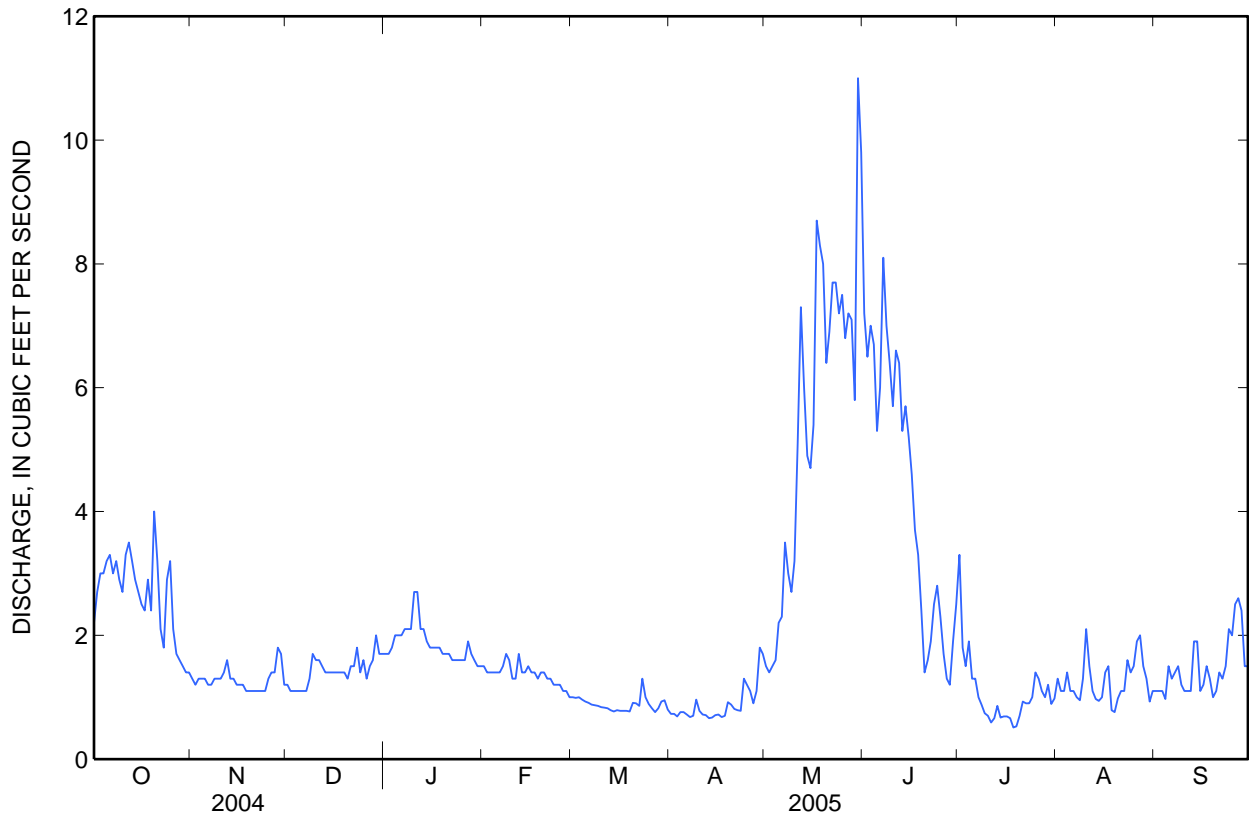
STATISTICS OF MONTHLY MEAN DATA FOR WATER YEARS 1992 - 98, 2004 - 05, BY WATER YEAR (WY)

	Oct	Nov	Dec	Jan	Feb	Mar	Apr	May	Jun	Jul	Aug	Sep
Mean	1.67	1.67	1.22	1.35	1.77	2.87	2.79	3.29	2.09	2.30	2.23	2.07
Max	2.64	5.19	2.20	1.89	2.49	10.6	5.16	5.56	4.34	7.51	5.27	4.94
(WY)	(2005)	(1995)	(1995)	(1995)	(1992)	(1993)	(1993)	(2005)	(2005)	(1996)	(1994)	(1994)
Min	0.41	0.60	0.61	0.64	0.89	0.88	0.88	0.36	0.18	0.32	0.19	0.26
(WY)	(2004)	(2004)	(1998)	(2004)	(1994)	(2005)	(2005)	(2003)	(2003)	(1993)	(1993)	(1993)

10172727 FAUST CREEK NEAR VERNON, UT—Continued

SUMMARY STATISTICS

	Calendar Year 2004		Water Year 2005		Water Years 1992 – 98, 2004 - 05	
Annual total	417.97		732.12			
Annual mean	1.14		2.01		2.16	
Highest annual mean					3.13	1996
Lowest annual mean					0.84	2004
Highest daily mean	4.0	Apr 8	11	May 30	19	Nov 23, 1994
Lowest daily mean	0.07	Jun 27	0.51	Jul 18	0.00	May 1, 2003
Annual seven-day minimum	0.08	Jul 7	0.64	Jul 14	0.06	Aug 6, 2003
Annual runoff (ac-ft)	829		1,450		1,560	
10 percent exceeds	2.2		4.6		4.8	
50 percent exceeds	0.99		1.4		1.5	
90 percent exceeds	0.30		0.79		0.59	





Water-Data Report UT-2005

10172800 SOUTH WILLOW CREEK NEAR GRANTSVILLE, UT

Great Salt Lake Basin

LOCATION.--Lat 40°29'47", long 112°34'25" referenced to North American Datum of 1927, in SW ¼ NW ¼ SW ¼ sec.6, T.4 S., R.6 W., Tooele County, Hydrologic Unit 16020304, on right bank 200 ft upstream from Forest Service Guard Station, 1.7 mi above Wasatch National Forest boundary, 9.2 mi southwest of Grantsville, and 14.8 mi west of Tooele.

DRAINAGE AREA.--4.19 mi². Area at crest-stage gage site, 3.26 mi².

WATER-DISCHARGE RECORDS

REVISED RECORDS.--WDR UT-83-1: 1982.

PERIOD OF RECORD.--July 1963 to current year. Annual maximum only, July 1960 to July 1963, at crest-stage gage site.

GAGE.--Water-stage recorder and concrete control. Elevation of gage is 6,360 ft above NGVD of 1929, from topographic map. Prior to July 23, 1963, crest-stage gage only, at site 1.4 mi upstream at different datum.

REMARKS.--Records good except for estimated daily discharges, which are fair.

EXTREMES FOR PERIOD OF RECORD.--Maximum discharge, 118 ft³/s, July 24, 1998, gage height, 2.45 ft, from rating extended above 75 ft³/s by slope-conveyance methods; minimum daily discharge, 1.3 ft³/s, March 7, 8, 2004.

EXTREMES FOR CURRENT YEAR.--Peak discharges greater than base discharge of 20 ft³/s and (or) maximum (*):

Date	Time	Discharge (ft ³ /s)	Gage height (ft)
Jun 23	1915	*83	*2.02

Minimum daily discharge, 1.6 ft³/s, Oct 12-17.

10172800 SOUTH WILLOW CREEK NEAR GRANTSVILLE, UT—Continued

DISCHARGE, CUBIC FEET PER SECOND
WATER YEAR OCTOBER 2004 TO SEPTEMBER 2005
DAILY MEAN VALUES

[e, estimated]

Day	Oct	Nov	Dec	Jan	Feb	Mar	Apr	May	Jun	Jul	Aug	Sep
1	1.8	2.8	2.6	2.6	2.9	2.6	4.0	15	39	24	8.9	6.7
2	1.8	2.6	2.6	2.6	2.9	2.6	4.1	15	42	23	9.1	6.6
3	1.8	2.6	2.6	2.6	2.9	2.6	4.5	15	36	25	8.9	6.7
4	1.8	2.6	2.6	2.6	2.9	2.6	4.8	15	35	23	8.4	6.7
5	1.8	2.6	2.4	2.4	2.9	2.6	5.0	15	27	e22	8.2	6.6
6	1.8	2.6	2.3	2.3	2.9	2.6	5.0	16	30	e20	7.8	6.7
7	1.8	2.6	2.3	2.3	2.9	2.6	5.2	19	29	19	7.8	6.6
8	1.8	2.6	2.3	2.3	2.6	2.6	6.3	19	31	18	7.8	6.7
9	1.8	2.7	2.3	2.3	2.6	2.6	7.0	18	31	18	8.0	6.6
10	1.8	2.9	2.3	2.5	2.6	2.8	7.2	19	29	18	7.8	6.2
11	1.7	3.1	2.3	2.6	2.5	3.2	7.4	20	e26	17	7.8	6.2
12	1.6	3.2	2.3	2.4	2.3	3.5	8.3	19	24	17	7.8	6.2
13	1.6	3.2	2.3	2.3	2.3	4.0	8.3	23	23	16	7.8	6.1
14	1.6	3.2	2.4	2.3	2.3	4.3	8.4	25	26	19	7.8	5.7
15	1.6	3.2	2.6	2.3	2.3	4.8	8.4	30	30	20	7.8	5.5
16	1.6	3.1	2.6	2.3	2.3	5.0	8.9	30	29	19	7.8	5.5
17	1.6	3.2	2.6	2.3	2.3	5.0	10	39	35	18	7.2	5.5
18	1.7	3.2	2.6	2.3	2.3	5.0	10	40	39	18	7.2	5.5
19	2.0	3.2	2.6	2.3	2.3	5.0	11	24	33	17	7.1	5.6
20	3.7	3.2	2.6	2.4	2.3	5.0	11	22	36	16	8.2	5.5
21	3.6	3.2	2.6	2.6	2.3	5.0	9.8	34	35	15	7.8	5.6
22	2.9	3.2	2.6	2.7	2.3	4.5	9.1	31	33	14	7.8	5.5
23	2.9	3.2	2.6	2.9	2.3	4.5	8.7	36	56	14	7.9	5.3
24	2.9	3.0	2.6	2.9	2.3	4.5	9.2	42	68	13	7.9	5.4
25	3.0	2.9	2.6	2.9	2.3	4.3	9.8	30	50	13	7.8	5.2
26	2.9	2.9	2.6	2.9	2.4	4.0	9.9	39	62	12	7.8	5.1
27	3.0	2.9	2.6	2.9	2.6	4.0	12	46	43	12	7.6	5.0
28	3.2	2.9	2.6	2.9	2.6	4.0	13	46	26	11	7.2	4.7
29	3.1	2.7	2.7	2.9	---	4.0	14	45	30	10	6.9	4.5
30	2.9	2.6	2.6	2.9	---	4.0	16	46	26	9.3	7.0	4.5
31	2.9	---	2.6	2.9	---	4.0	---	e42	---	8.5	6.7	---
Total	70.0	87.9	77.9	79.4	70.4	117.8	256.3	875	1,059	518.8	241.6	174.2
Mean	2.26	2.93	2.51	2.56	2.51	3.80	8.54	28.2	35.3	16.7	7.79	5.81
Max	3.7	3.2	2.7	2.9	2.9	5.0	16	46	68	25	9.1	6.7
Min	1.6	2.6	2.3	2.3	2.3	2.6	4.0	15	23	8.5	6.7	4.5
Ac-ft	139	174	155	157	140	234	508	1,740	2,100	1,030	479	346

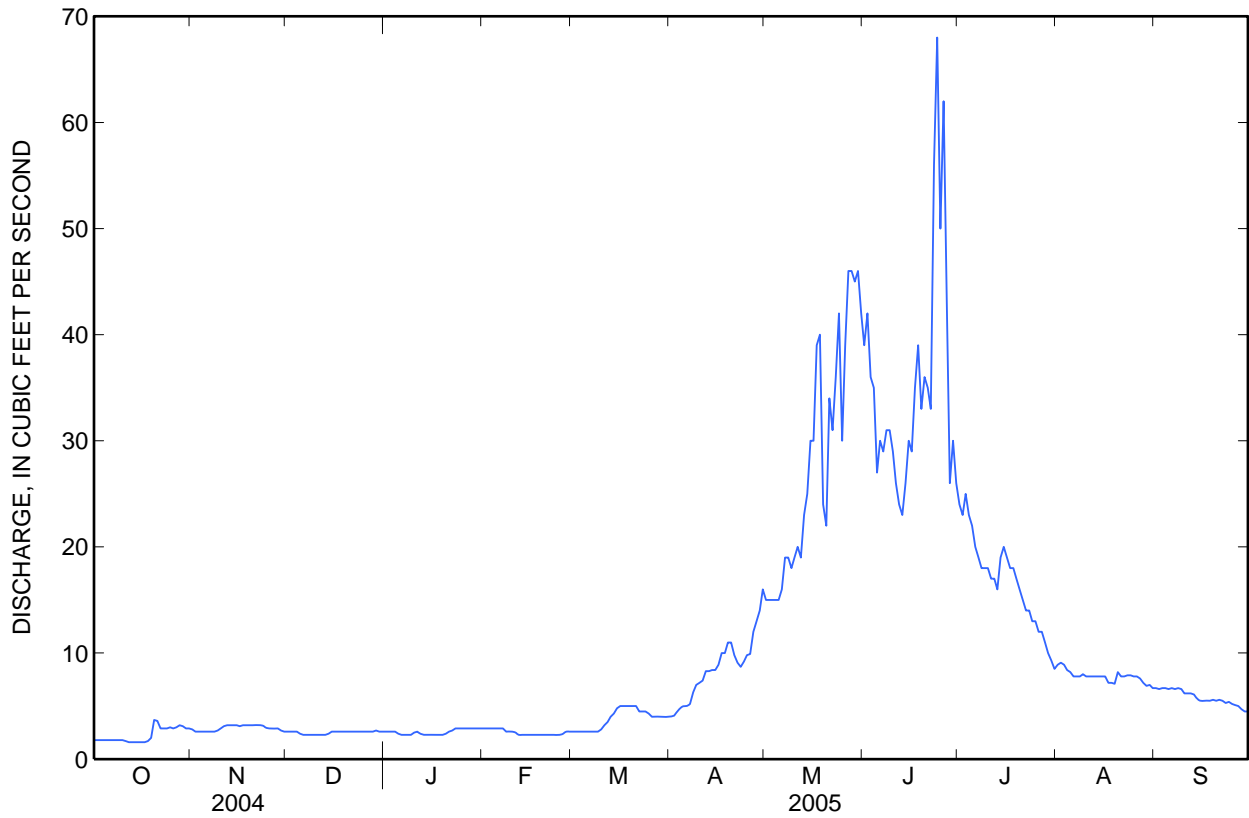
STATISTICS OF MONTHLY MEAN DATA FOR WATER YEARS 1964 - 2005, BY WATER YEAR (WY)

	Oct	Nov	Dec	Jan	Feb	Mar	Apr	May	Jun	Jul	Aug	Sep
Mean	3.54	3.30	2.95	2.87	2.86	3.59	6.38	16.2	19.4	9.53	5.10	4.04
Max	7.59	6.57	5.79	5.61	5.84	7.13	12.0	40.0	46.0	24.6	12.6	9.54
(WY)	(1984)	(1985)	(1985)	(1984)	(1984)	(1986)	(1986)	(1984)	(1984)	(1984)	(1984)	(1982)
Min	1.71	1.62	1.55	1.50	1.54	1.53	2.42	4.38	4.00	2.55	1.91	1.71
(WY)	(1991)	(2004)	(2004)	(1991)	(1991)	(1991)	(1967)	(1977)	(1992)	(1992)	(1992)	(1992)

10172800 SOUTH WILLOW CREEK NEAR GRANTSVILLE, UT—Continued

SUMMARY STATISTICS

	Calendar Year 2004		Water Year 2005		Water Years 1964 - 2005	
Annual total	1,641.0		3,628.3			
Annual mean	4.48		9.94		6.66	
Highest annual mean					14.9	1984
Lowest annual mean					3.03	1977
Highest daily mean	18	Jun 6	68	Jun 24	84	Jun 1, 1984
Lowest daily mean	1.3	Mar 7	1.6	Oct 12	1.3	Mar 7, 2004
Annual seven-day minimum	1.5	Mar 3	1.6	Oct 11	1.4	Dec 1, 2003
Annual runoff (ac-ft)	3,250		7,200		4,820	
10 percent exceeds	10		29		15	
50 percent exceeds	2.6		4.8		3.8	
90 percent exceeds	1.7		2.3		2.1	





Water-Data Report UT-2005

10172870 TROUT CREEK NEAR CALLAO, UT

Great Salt Lake Basin

LOCATION.--Lat 39°44'39", long 113°53'21" referenced to North American Datum of 1927, in SW ¼ NW ¼ SW ¼ sec.28, T.12 S., R.18 W., Juab County, Hydrologic Unit 16020306, on left bank 2.9 mi upstream from Birch Creek, and 14 mi southwest of Callao.

DRAINAGE AREA.--8.19 mi².

WATER-DISCHARGE RECORDS

REVISED RECORDS.--WDR UT-77-1: Drainage area.

PERIOD OF RECORD.--October 1958 to September 1995, July 2002 to current year.

GAGE.--Water-stage recorder. Elevation of gage is 6,200 ft above NGVD of 1929, from topographic map.

REMARKS.--Records good except for winter record and estimated daily discharges, which are fair. No diversion above station.

EXTREMES FOR PERIOD OF RECORD.--Maximum discharge, 177 ft³/s, Jun 2, 1983, gage height, 2.84 ft, maximum gage height, 3.00 ft, May 15, 1973, datum then in use; minimum, 0.24 ft³/s, Feb 25, 1969.

EXTREMES FOR CURRENT YEAR.--Peak discharges greater than base discharge of 20 ft³/s and maximum (*):

Date	Time	Discharge (ft ³ /s)	Gage height (ft)
May 25	0815	*144	*4.87

Minimum daily discharge, 1.4 ft³/s, Jan 15-16.

10172870 TROUT CREEK NEAR CALLAO, UT—Continued

DISCHARGE, CUBIC FEET PER SECOND
WATER YEAR OCTOBER 2004 TO SEPTEMBER 2005
DAILY MEAN VALUES

[e, estimated]

Day	Oct	Nov	Dec	Jan	Feb	Mar	Apr	May	Jun	Jul	Aug	Sep
1	2.2	2.5	e2.2	1.9	2.4	2.0	3.8	12	67	24	5.0	2.5
2	2.1	2.9	e2.2	1.9	2.9	2.0	4.1	12	63	23	4.5	2.5
3	2.0	2.3	e2.1	1.9	2.5	2.1	4.6	13	46	22	4.4	2.4
4	1.9	2.3	e2.1	1.8	2.3	2.0	4.8	13	33	21	4.2	2.3
5	2.0	2.2	e2.0	1.7	2.2	2.0	4.7	15	30	20	4.3	2.3
6	1.9	2.2	e2.0	1.7	2.2	2.0	5.2	18	33	19	4.7	2.2
7	1.9	2.1	e2.0	1.8	2.2	2.1	6.2	17	35	18	3.4	2.2
8	1.9	3.1	1.9	2.0	e2.2	2.3	7.6	16	32	17	3.3	2.1
9	1.8	2.9	1.9	2.1	e2.2	2.7	8.1	17	29	16	3.3	2.1
10	1.8	2.6	1.9	2.1	e2.3	3.4	8.3	17	25	15	3.1	2.3
11	1.9	2.6	2.2	2.2	e2.3	3.8	7.4	15	23	14	3.0	2.4
12	1.9	2.9	2.3	e2.3	2.3	4.5	6.9	13	22	13	3.7	2.4
13	1.8	2.7	2.3	e1.9	2.2	4.9	10	13	21	12	3.7	2.3
14	1.8	2.7	2.5	1.5	2.2	4.8	11	13	22	11	2.7	2.2
15	1.8	2.7	2.5	1.4	2.0	4.5	9.2	15	26	11	2.6	2.1
16	1.7	2.7	2.6	1.4	e2.0	4.6	9.3	22	33	9.7	2.4	2.0
17	1.7	2.7	e2.4	1.5	e1.9	4.4	11	26	39	9.0	2.5	2.0
18	1.9	2.8	2.3	1.6	1.9	4.2	12	28	44	8.5	3.0	2.1
19	2.1	2.7	2.4	1.7	1.9	3.9	11	40	42	8.3	3.7	2.0
20	4.2	e2.6	2.5	1.9	1.9	3.8	9.9	67	43	8.1	3.8	2.0
21	2.9	e2.6	e2.4	2.1	1.9	3.7	9.1	73	44	7.6	3.9	2.3
22	2.6	e2.5	e2.3	2.4	1.9	3.7	8.6	101	46	7.3	3.9	2.0
23	2.4	2.5	e2.2	2.5	1.9	3.9	8.6	93	45	6.9	3.4	1.9
24	2.4	e2.4	e2.1	2.7	1.9	3.9	9.6	72	42	6.7	2.9	2.0
25	2.7	2.4	e2.0	2.8	1.9	3.8	9.6	106	38	6.5	2.9	2.0
26	2.7	2.3	e1.9	2.8	2.0	3.4	10	115	35	6.0	2.8	2.0
27	3.4	2.4	1.8	2.9	1.9	3.9	11	97	31	5.7	2.8	2.0
28	3.1	2.3	1.8	2.8	2.0	4.4	11	80	29	5.3	2.6	2.0
29	2.8	e2.3	e1.9	2.7	---	4.1	12	86	27	5.1	2.5	1.9
30	2.6	e2.3	2.0	2.6	---	4.0	11	93	25	5.4	2.5	1.8
31	2.5	---	1.9	2.5	---	4.1	---	77	---	5.3	2.6	---
Total	70.4	76.2	66.6	65.1	59.4	108.9	255.6	1,395	1,070	367.4	104.1	64.3
Mean	2.27	2.54	2.15	2.10	2.12	3.51	8.52	45.0	35.7	11.9	3.36	2.14
Max	4.2	3.1	2.6	2.9	2.9	4.9	12	115	67	24	5.0	2.5
Min	1.7	2.1	1.8	1.4	1.9	2.0	3.8	12	21	5.1	2.4	1.8
Ac-ft	140	151	132	129	118	216	507	2,770	2,120	729	206	128

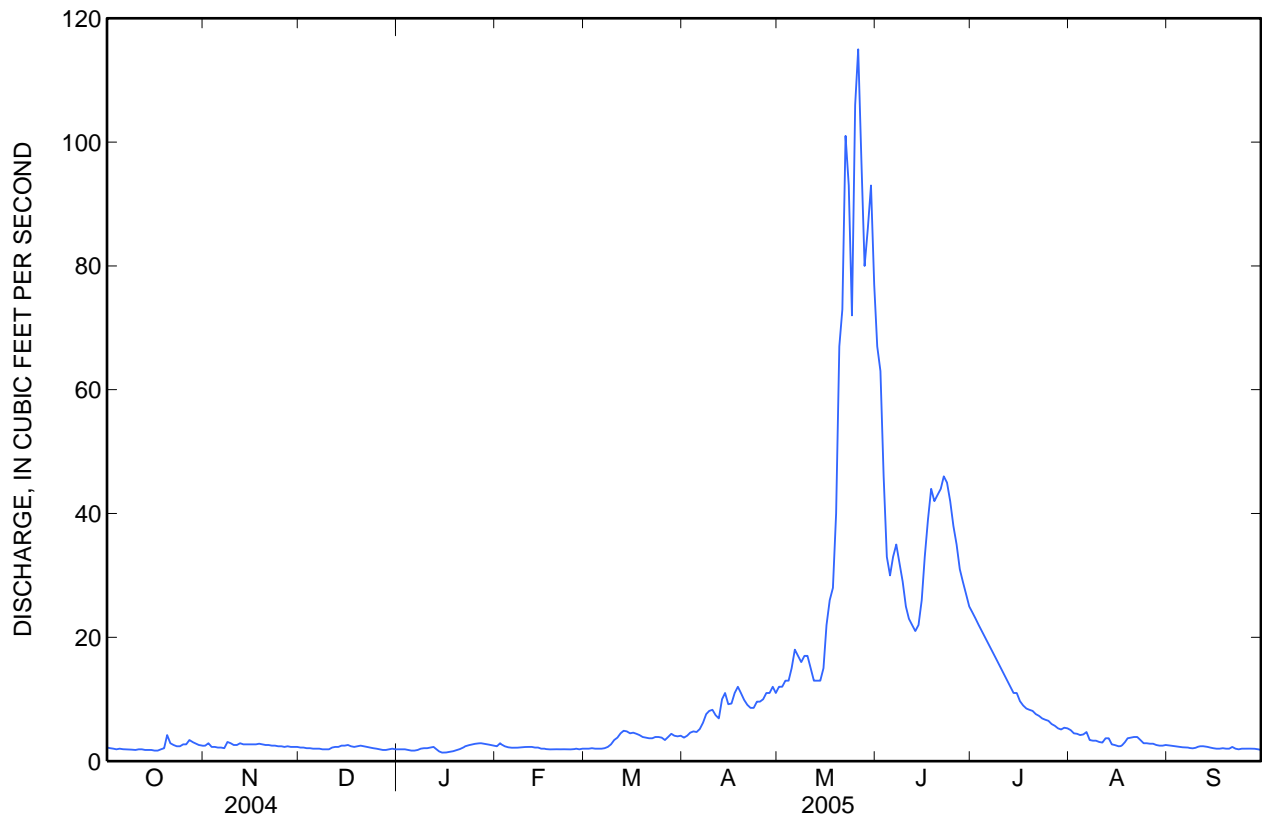
STATISTICS OF MONTHLY MEAN DATA FOR WATER YEARS 1959-95, 2003-05, BY WATER YEAR (WY)

	Oct	Nov	Dec	Jan	Feb	Mar	Apr	May	Jun	Jul	Aug	Sep
Mean	2.13	2.02	1.74	1.63	1.67	2.21	5.10	18.3	21.8	6.00	2.59	1.99
Max	8.59	4.96	3.29	3.31	3.35	5.04	11.1	59.2	95.4	20.1	6.55	5.37
(WY)	(1983)	(1983)	(1983)	(1983)	(1983)	(1983)	(1962)	(1984)	(1983)	(1995)	(1965)	(1965)
Min	1.16	1.02	1.03	0.96	1.02	1.09	1.34	3.44	3.66	1.49	0.98	0.91
(WY)	(1993)	(2004)	(2004)	(1960)	(1960)	(1991)	(1991)	(1989)	(1959)	(1959)	(1959)	(1994)

10172870 TROUT CREEK NEAR CALLAO, UT—Continued

SUMMARY STATISTICS

	Calendar Year 2004		Water Year 2005		Water Years 1959-95, 2003-05	
Annual total	1,479.78		3,703.0			
Annual mean	4.04		10.1		5.71	
Highest annual mean					16.3	1983
Lowest annual mean					2.07	1989
Highest daily mean	27	May 7	115	May 26	156	Jun 1, 1983
Lowest daily mean	0.73	Jan 23	1.4	Jan 15	0.52	Feb 9, 1993
Annual seven-day minimum	0.85	Jan 18	1.6	Jan 13	0.80	Sep 22, 1994
Annual runoff (ac-ft)	2,940		7,340		4,140	
10 percent exceeds	10		27		13	
50 percent exceeds	2.2		2.7		2.1	
90 percent exceeds	1.1		1.9		1.3	





Water-Data Report UT-2005

10172875 GRANITE CREEK NEAR CALLAO, UT

Great Salt Lake Basin

LOCATION.--Lat 39°46'40", long 113°51'39" referenced to North American Datum of 1927, in SW ¼ SW ¼ NE ¼ sec.15, T.12 S., R.18 E., Juab County, Hydrologic Unit 16020306, on right bank about 150 feet upstream of irrigation diversion, 11.5 mi southwest of Callao.

DRAINAGE AREA.--8.65 mi².

WATER-DISCHARGE RECORDS

PERIOD OF RECORD.--June 2003 to current year.

GAGE.--Water-stage recorder. Elevation of gage is 6,040 ft above NGVD of 1929, from topographic map.

REMARKS.--Records good.

EXTREMES FOR PERIOD OF RECORD.--Maximum discharge, 77 ft³/s, May 26, 2005, gage height, 3.24 ft, from rating curve; minimum daily discharge, 0.12 ft³/s, Aug 12, Sep 29, 30, 2003.

EXTREMES FOR CURRENT YEAR.--Maximum discharge, 77 ft³/s, May 26, gage height, 3.24 ft from rating curve; minimum daily discharge, 0.31 ft³/s, Oct 9.

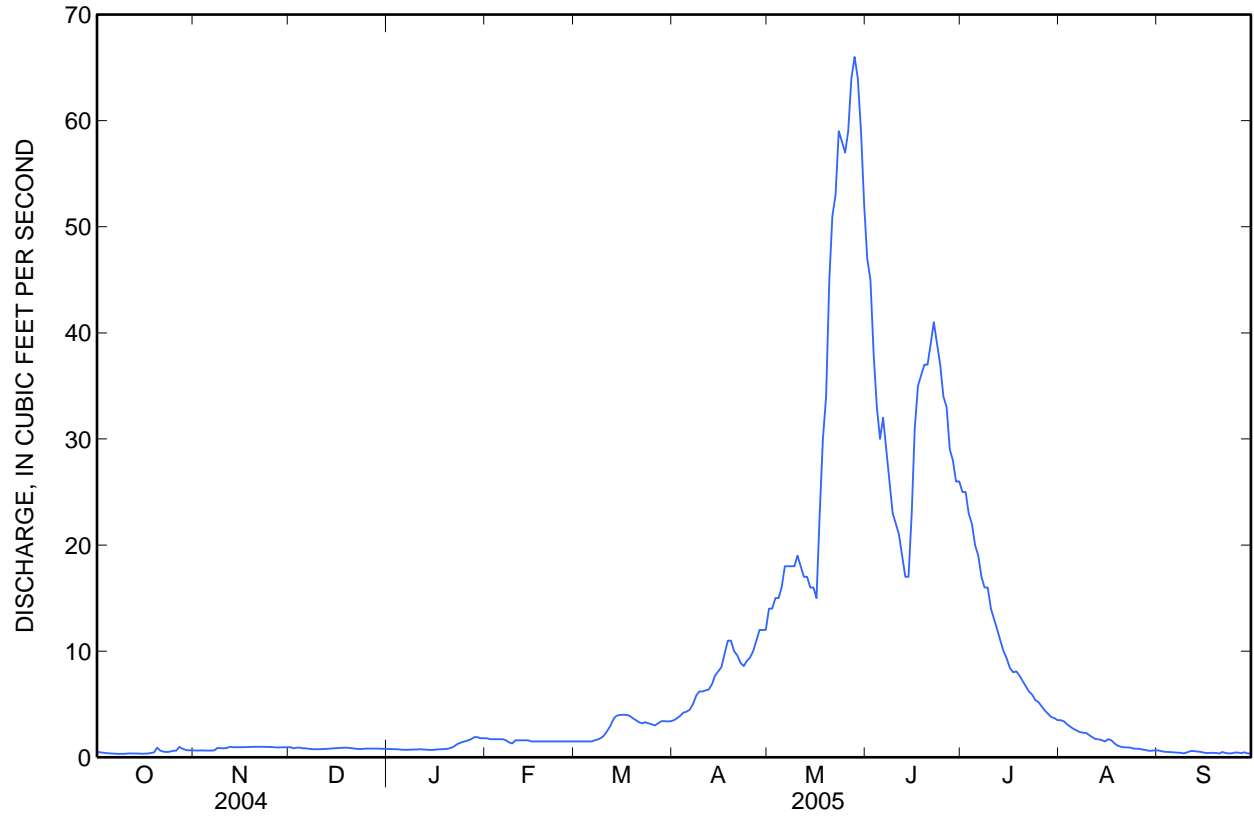
10172875 GRANITE CREEK NEAR CALLAO, UT —Continued

DISCHARGE, CUBIC FEET PER SECOND
WATER YEAR OCTOBER 2004 TO SEPTEMBER 2005
DAILY MEAN VALUES

[e, estimated]

Day	Oct	Nov	Dec	Jan	Feb	Mar	Apr	May	Jun	Jul	Aug	Sep
1	0.53	0.64	e0.95	0.78	1.8	1.5	3.5	14	47	25	3.5	0.62
2	0.45	0.63	e0.85	0.76	1.7	1.5	3.7	14	45	25	3.4	0.56
3	0.44	0.65	e0.90	0.77	1.7	1.5	3.9	15	38	23	3.1	0.52
4	0.39	0.64	e0.90	0.76	1.7	1.5	4.2	15	33	22	2.9	0.49
5	0.35	0.63	e0.85	0.73	1.7	1.5	4.3	16	30	20	2.7	0.48
6	0.34	0.64	e0.85	0.70	1.7	1.5	4.5	18	32	19	2.5	0.46
7	0.34	0.65	e0.80	0.71	1.6	1.6	5.0	18	29	17	2.4	0.43
8	0.32	0.88	e0.75	0.73	e1.4	1.7	5.8	18	26	16	2.3	0.41
9	0.31	0.86	e0.75	0.73	e1.3	1.8	6.2	18	23	16	2.3	0.38
10	0.33	0.84	0.77	0.74	e1.6	2.1	6.2	19	22	14	2.1	0.48
11	0.36	0.88	0.77	0.77	1.6	2.5	6.3	18	21	13	1.9	0.58
12	0.37	1.0	0.79	0.73	1.6	3.0	6.4	17	19	12	1.7	0.58
13	0.35	0.95	0.81	e0.70	1.6	3.6	6.9	17	17	11	1.7	0.54
14	0.34	0.95	0.83	0.71	1.6	3.9	7.7	16	17	10	1.6	0.51
15	0.34	0.95	0.85	0.70	1.5	4.0	8.1	16	23	9.3	1.5	0.46
16	0.33	0.96	0.86	0.74	1.5	4.0	8.5	15	31	8.4	1.7	0.40
17	0.34	0.95	0.90	0.75	1.5	4.0	9.8	23	35	8.0	1.6	0.40
18	0.40	0.97	0.91	0.76	1.5	3.9	11	30	36	8.1	1.3	0.42
19	0.47	0.98	0.87	0.78	1.5	3.7	11	34	37	7.7	1.1	0.40
20	0.91	0.96	0.87	0.82	1.5	3.5	10	45	37	7.2	1.0	0.35
21	0.62	1.00	e0.85	0.93	1.5	3.3	9.6	51	39	6.7	0.93	0.50
22	0.53	1.0	e0.80	1.1	1.5	3.2	8.9	53	41	6.2	0.93	0.41
23	0.50	0.98	e0.75	1.3	1.5	3.3	8.6	59	39	5.9	0.91	0.36
24	0.53	0.97	e0.80	1.4	1.5	3.2	9.1	58	37	5.4	0.81	0.38
25	0.62	0.97	e0.80	1.5	1.5	3.1	9.4	57	34	5.2	0.82	0.45
26	0.62	0.95	e0.80	1.6	1.5	3.0	10	59	33	4.8	0.79	0.43
27	0.98	0.94	0.85	1.7	1.5	3.2	11	64	29	4.4	0.72	0.39
28	0.81	e0.90	0.81	1.9	1.5	3.4	12	66	28	4.1	0.68	0.47
29	0.68	e0.95	0.83	1.9	---	3.4	12	64	26	3.8	0.61	0.37
30	0.65	e0.95	0.79	1.8	---	3.4	12	59	26	3.7	0.64	0.34
31	0.66	---	0.80	1.8	---	3.4	---	52	---	3.5	0.67	---
Total	15.21	26.22	25.71	31.80	43.6	88.2	235.6	1,038	930	345.4	50.81	13.57
Mean	0.49	0.87	0.83	1.03	1.56	2.85	7.85	33.5	31.0	11.1	1.64	0.45
Max	0.98	1.0	0.95	1.9	1.8	4.0	12	66	47	25	3.5	0.62
Min	0.31	0.63	0.75	0.70	1.3	1.5	3.5	14	17	3.5	0.61	0.34
Ac-ft	30	52	51	63	86	175	467	2,060	1,840	685	101	27

10172875 GRANITE CREEK NEAR CALLAO, UT —Continued



10172952 DUNN CREEK NEAR PARK VALLEY, UT

Great Salt Lake Basin

LOCATION.--Lat 41°51'31", long 113°19'35" referenced to North American Datum of 1927, in NW ¼ NW ¼ NW ¼ sec.15, T.13 N., R.13 W., Box Elder County, Hydrologic Unit 16020308, on right bank 150 ft upstream from diversion structure, 200 ft downstream from confluence of left hand and right hand forks, and 2.9 mi north of Park Valley.

DRAINAGE AREA.--8.72 mi².

WATER-DISCHARGE RECORDS

REVISED RECORDS.--WDR UT-99-1: 1998, daily values.

PERIOD OF RECORD.--May 1971 to September 1973, October 1976 to current year.

GAGE.--Water-stage recorder. Elevation of gage is 6,250 ft above NGVD of 1929, from topographic map. Prior to August 26, 1982 at site 110 ft downstream at different datum.

REMARKS.--Records good except for estimated daily discharges, which are fair. Diversion for flood flows, located approximately 300 ft upstream.

EXTREMES FOR PERIOD OF RECORD.--Maximum daily discharge, 150 ft³/s, May 28, 1983; minimum discharge, 0.14 ft³/s, Mar 17, 1981.

EXTREMES FOR CURRENT YEAR.--Maximum discharge, 67 ft³/s, May 20, gage height, 2.68 ft; minimum daily discharge, 0.97 ft³/s, Dec 24.

10172952 DUNN CREEK NEAR PARK VALLEY, UT —Continued

DISCHARGE, CUBIC FEET PER SECOND
WATER YEAR OCTOBER 2004 TO SEPTEMBER 2005
DAILY MEAN VALUES

[e, estimated]

Day	Oct	Nov	Dec	Jan	Feb	Mar	Apr	May	Jun	Jul	Aug	Sep
1	1.7	2.3	e1.2	1.2	1.4	1.5	3.9	16	53	22	5.0	2.4
2	1.4	2.3	e1.3	1.2	1.4	1.5	4.3	16	50	21	4.9	2.3
3	1.4	2.2	e1.3	1.2	1.4	1.7	4.4	16	40	20	4.7	2.3
4	1.4	2.2	e1.4	1.2	1.4	1.8	4.4	16	37	19	4.4	2.3
5	1.3	2.0	e1.4	1.2	1.4	1.9	4.4	17	38	18	4.5	2.2
6	1.3	2.0	e1.4	1.1	1.4	2.0	5.1	21	39	17	4.4	2.2
7	1.2	1.9	1.4	1.1	1.3	2.1	6.0	24	40	17	4.3	2.1
8	1.2	1.9	1.4	1.2	1.2	2.4	6.6	26	42	16	4.1	2.1
9	1.2	1.9	1.7	1.2	1.2	3.2	6.1	28	39	15	4.0	2.1
10	1.2	1.9	1.7	1.2	1.2	4.3	5.7	27	35	15	4.1	2.4
11	1.2	2.9	1.6	e1.1	1.2	4.6	5.8	26	33	14	4.0	2.8
12	1.2	2.4	1.7	e1.0	1.2	5.0	6.3	25	33	13	3.9	2.4
13	1.2	2.2	1.7	e1.3	1.2	4.7	7.3	24	33	13	3.7	2.4
14	1.2	2.2	1.7	1.4	1.2	4.3	7.0	22	34	12	3.6	2.2
15	1.2	2.1	1.6	1.3	1.1	4.1	6.8	22	41	11	3.5	2.1
16	1.2	1.6	1.5	1.3	1.1	3.8	7.1	25	47	11	3.9	2.1
17	1.2	1.5	1.5	1.3	1.2	3.8	7.8	29	48	9.7	3.6	2.0
18	1.7	1.4	1.4	1.3	1.2	3.7	8.0	30	38	9.3	3.6	2.0
19	1.8	1.3	1.4	1.4	1.2	3.9	8.0	40	38	8.7	3.6	2.0
20	3.7	1.1	1.4	1.4	1.2	4.0	8.4	59	38	8.5	3.4	1.9
21	3.1	1.4	e1.2	1.4	1.2	3.8	8.4	57	40	8.1	3.2	2.3
22	2.4	1.4	1.3	1.5	1.3	3.9	9.2	57	41	8.0	3.1	2.1
23	2.6	1.3	e1.0	1.5	1.2	4.2	9.9	60	42	7.9	2.9	2.0
24	2.4	1.4	0.97	1.5	1.3	4.0	12	60	41	7.6	2.9	2.2
25	2.3	1.4	0.98	1.6	1.3	3.6	13	59	36	7.3	2.8	2.2
26	2.5	1.3	1.0	1.6	1.4	3.9	13	57	35	6.9	2.8	2.0
27	2.5	1.3	1.2	1.5	1.5	4.0	15	57	32	6.6	2.7	2.1
28	3.2	e1.0	1.2	1.5	1.5	3.8	17	55	29	6.3	2.6	1.9
29	2.8	1.3	1.2	1.5	---	3.3	16	53	26	6.3	2.5	1.9
30	2.7	e1.2	1.3	1.5	---	3.9	16	57	24	5.6	2.5	1.8
31	2.4	---	1.3	1.4	---	3.9	---	54	---	5.1	2.5	---
Total	57.8	52.3	42.35	41.1	35.8	106.6	252.9	1,135	1,142	365.9	111.7	64.8
Mean	1.86	1.74	1.37	1.33	1.28	3.44	8.43	36.6	38.1	11.8	3.60	2.16
Max	3.7	2.9	1.7	1.6	1.5	5.0	17	60	53	22	5.0	2.8
Min	1.2	1.0	0.97	1.0	1.1	1.5	3.9	16	24	5.1	2.5	1.8
Ac-ft	115	104	84	82	71	211	502	2,250	2,270	726	222	129

STATISTICS OF MONTHLY MEAN DATA FOR WATER YEARS 1972-73, 1977- 2005, BY WATER YEAR (WY)

	Oct	Nov	Dec	Jan	Feb	Mar	Apr	May	Jun	Jul	Aug	Sep
Mean	1.79	1.54	1.29	1.24	1.33	2.44	5.33	18.6	19.1	6.93	3.14	2.00
Max	3.64	2.45	2.09	2.04	2.82	6.33	16.4	38.1	57.3	17.9	8.45	4.58
(WY)	(1985)	(1983)	(1983)	(1980)	(1986)	(1986)	(1986)	(1997)	(1983)	(1983)	(1984)	(1984)
Min	0.66	0.75	0.64	0.59	0.62	0.85	1.12	3.40	3.13	1.25	0.62	0.57
(WY)	(2004)	(1995)	(1995)	(1995)	(1995)	(1977)	(2003)	(1977)	(1992)	(1994)	(2001)	(2003)

10172952 DUNN CREEK NEAR PARK VALLEY, UT —Continued

SUMMARY STATISTICS

	Calendar Year 2004		Water Year 2005		Water Years 1972-73, 1977- 2005	
Annual total	1,478.59		3,408.25			
Annual mean	4.04		9.34		5.41	
Highest annual mean					12.0	1983
Lowest annual mean					2.00	1994
Highest daily mean	35	May 9	60	May 23	150	May 28, 1983
Lowest daily mean	0.69	Feb 12	0.97	Dec 24	0.32	Feb 15, 1995
Annual seven-day minimum	0.74	Feb 10	1.1	Dec 23	0.42	Jan 19, 1995
Annual runoff (ac-ft)	2,930		6,760		3,920	
10 percent exceeds	9.4		33		13	
50 percent exceeds	1.9		2.5		2.0	
90 percent exceeds	0.84		1.2		0.90	

