



Water-Data Report UT-2005

10011500 BEAR RIVER NEAR UTAH-WYOMING STATE LINE

Bear River Basin

LOCATION.--Lat 40°57'55", long 110°51'10" referenced to North American Datum of 1927, in SE ¼ NW ¼ SE ¼ sec.30, T.3 N., R.10 E., Summit County, Hydrologic Unit 16010101, on left bank 400 ft downstream from West Fork and 2.8 mi upstream from Utah-Wyoming State line.

DRAINAGE AREA.--172 mi².

WATER-DISCHARGE RECORDS

REVISED RECORDS.--WDR UT-74-1: Drainage area.

PERIOD OF RECORD.--July 1942 to current year.

GAGE.--Water-stage recorder. Elevation of gage is 7,965 ft above NGVD of 1929, from river-profile map. Prior to October 1, 1986 at datum 3.0 ft lower.

REMARKS.--Records good except for estimated daily discharges, which are poor. Flow regulated slightly by Whitney Reservoir, total capacity, 4,700 acre-ft since 1966. Three diversions above station for irrigation of about 265 acres above and 2,600 acres below station.

EXTREMES FOR PERIOD OF RECORD.--Maximum discharge, 3,230 ft³/s, Jun 6, 1986, gage height, 4.05 ft, datum then in use; minimum, 6.8 ft³/s, Apr 12, 1984, result of upstream ice jam.

EXTREMES FOR CURRENT YEAR.--Peak discharges greater than base discharge of 1,100 ft³/s and (or) maximum (*):

Date	Time	Discharge (ft ³ /s)	Gage height (ft)
May 24	0130	*2,220	*6.82

Minimum daily discharge, 36 ft³/s, Mar 14,17, and 18.

10011500 BEAR RIVER NEAR UTAH-WYOMING STATE LINE—Continued

DISCHARGE, CUBIC FEET PER SECOND
WATER YEAR OCTOBER 2004 TO SEPTEMBER 2005
DAILY MEAN VALUES

[e, estimated]

Day	Oct	Nov	Dec	Jan	Feb	Mar	Apr	May	Jun	Jul	Aug	Sep
1	55	53	e40	e40	e42	e43	42	179	1,080	746	153	64
2	53	51	e45	e41	e43	e44	47	183	1,000	752	145	62
3	49	68	e43	e41	e44	e48	52	177	875	772	152	62
4	47	64	e43	e40	e46	e48	52	198	728	681	144	62
5	47	60	e45	e40	e44	e47	47	260	732	629	151	63
6	48	60	e48	e40	e42	e44	50	391	926	607	141	60
7	46	60	e46	e41	e39	e45	65	354	828	549	133	59
8	45	65	e45	e42	e40	e42	73	298	692	500	130	60
9	45	78	e43	e44	e41	e40	59	346	639	482	131	73
10	47	78	e42	e43	e44	e39	61	402	590	453	127	112
11	60	75	e41	e42	e46	39	60	320	532	424	121	134
12	54	71	e41	e41	e47	42	65	280	578	405	112	134
13	51	67	e43	e40	e48	43	80	287	483	391	107	138
14	49	58	e44	e41	e48	36	86	342	521	374	101	133
15	47	57	e46	e42	e47	38	84	442	749	344	99	121
16	46	66	e44	e42	e46	41	101	655	1,020	317	101	108
17	45	62	e43	e43	e45	36	137	817	1,210	309	111	86
18	52	52	e42	e44	e44	36	169	628	1,400	292	99	84
19	59	54	e41	e45	e43	39	170	865	1,400	260	92	82
20	82	38	e40	e46	e43	42	157	1,250	1,410	237	88	80
21	98	39	e40	e47	e42	40	135	1,550	1,400	229	84	82
22	83	54	e42	e48	e41	39	132	1,610	1,400	227	88	68
23	73	56	e43	e49	e39	43	157	1,740	1,380	228	86	60
24	74	49	e40	e48	e39	43	189	1,820	1,270	213	80	57
25	71	60	e49	e47	e40	41	197	1,690	1,140	198	75	56
26	70	55	e46	e46	e40	42	234	1,440	1,210	181	73	55
27	69	43	e42	e45	e41	42	273	1,370	1,000	162	70	55
28	77	e46	e41	e44	e42	49	262	1,360	910	147	70	68
29	70	e48	e40	e43	---	45	222	1,330	843	136	67	56
30	69	e40	e41	e42	---	44	193	1,420	777	140	64	53
31	66	---	e41	e42	---	43	---	1,100	---	162	64	---
Total	1,847	1,727	1,330	1,339	1,206	1,303	3,651	25,104	28,723	11,547	3,259	2,387
Mean	59.6	57.6	42.9	43.2	43.1	42.0	122	810	957	372	105	79.6
Max	98	78	49	49	48	49	273	1,820	1,410	772	153	138
Min	45	38	40	40	39	36	42	177	483	136	64	53
Ac-ft	3,660	3,430	2,640	2,660	2,390	2,580	7,240	49,790	56,970	22,900	6,460	4,730

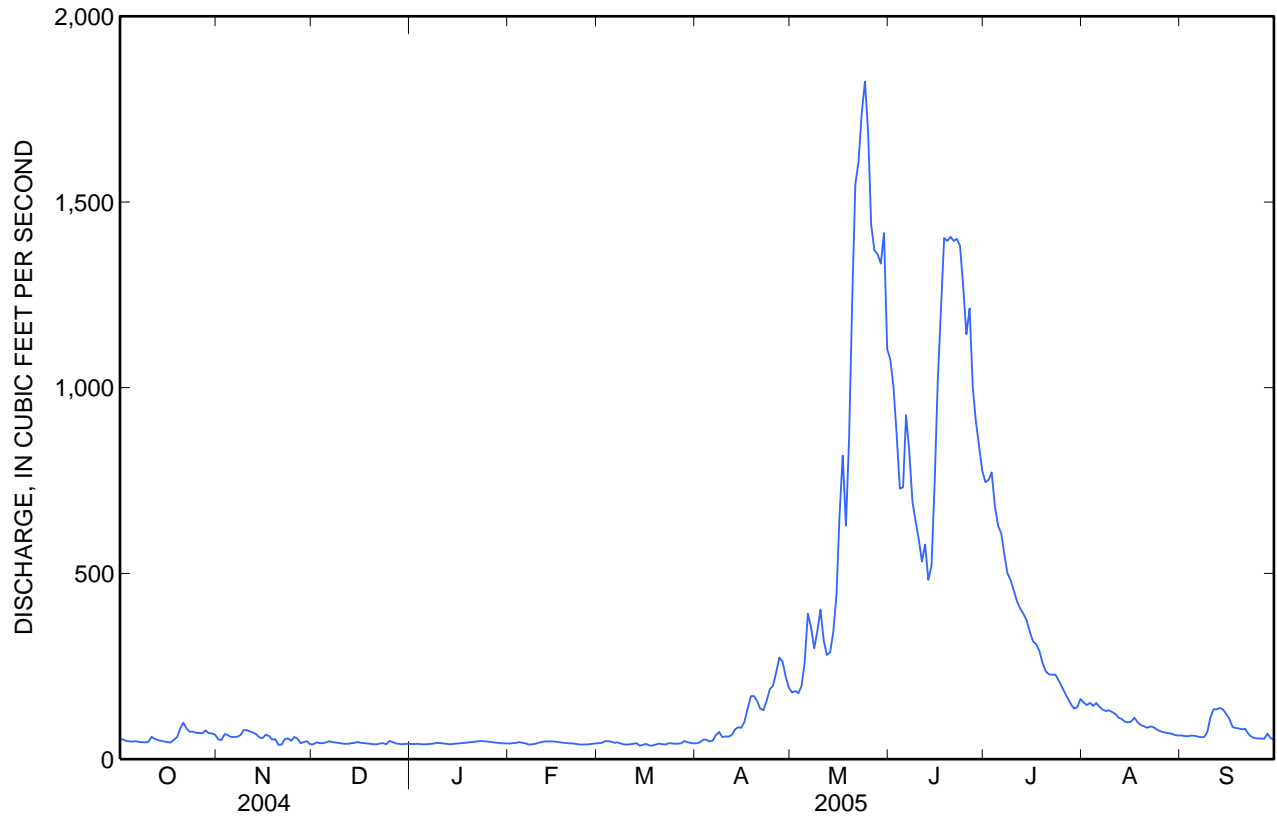
STATISTICS OF MONTHLY MEAN DATA FOR WATER YEARS 1943 - 2005, BY WATER YEAR (WY)

	Oct	Nov	Dec	Jan	Feb	Mar	Apr	May	Jun	Jul	Aug	Sep
Mean	63.0	54.4	46.3	41.8	39.7	43.8	112	597	839	298	93.7	73.5
Max	208	106	94.9	72.4	64.3	69.0	316	1,044	1,990	1,105	244	229
(WY)	(1983)	(1984)	(1984)	(1984)	(1984)	(1986)	(1946)	(1984)	(1986)	(1995)	(1965)	(1983)
Min	30.8	32.5	27.7	29.6	21.1	26.0	37.2	162	204	67.4	31.0	23.9
(WY)	(1959)	(1955)	(1960)	(1991)	(2003)	(1964)	(1944)	(1977)	(1992)	(1961)	(2002)	(1956)

10011500 BEAR RIVER NEAR UTAH-WYOMING STATE LINE—Continued

SUMMARY STATISTICS

	Calendar Year 2004		Water Year 2005		Water Years 1943 - 2005	
Annual total	46,248		83,423			
Annual mean	126		229		192	
Highest annual mean					335	1986
Lowest annual mean					81.5	1977
Highest daily mean	679	May 9	1,820	May 24	2,680	Jun 4, 1986
Lowest daily mean	35	Feb 15	36	Mar 14	13	Feb 9, 2003
Annual seven-day minimum	35	Feb 14	38	Mar 14	15	Feb 6, 2003
Annual runoff (ac-ft)	91,730		165,500		139,100	
10 percent exceeds	298		750		590	
50 percent exceeds	64		62		59	
90 percent exceeds	40		41		34	





Water-Data Report UT-2005

10016900 BEAR RIVER AT EVANSTON, WY

BEAR RIVER BASIN

LOCATION.--Lat 41°16'13", long 110°57'47" (NAD 27), in NE1/4 NW1/4 NW1/4 sec.21, T.15 N., R.120 W., Uinta County, Hydrologic Unit 16010101, on left bank 100 ft downstream from bridge on State Highway 89, in the City of Evanston.

DRAINAGE AREA.--433 mi².

PERIOD OF RECORD.--May 1984 to current year (no winter records 1984 to 2001).

GAGE.--Water-stage recorder. Elevation of gage is 6,730 ft above NGVD of 1929, from topographic map. U.S. Geological Survey data collection with satellite telemetry at station.

REMARKS.--Records fair except those for estimated daily discharges, which are poor. Natural flow of stream affected by storage reservoirs, diversions for irrigation, and return flow from irrigated areas.

10016900 BEAR RIVER AT EVANSTON, WY—Continued

**DISCHARGE, CUBIC FEET PER SECOND
WATER YEAR OCTOBER 2004 TO SEPTEMBER 2005
DAILY MEAN VALUE**

Day	Oct	Nov	Dec	Jan	Feb	Mar	Apr	May	Jun	Jul	Aug	Sep
1	44	58	e22	e52	e50	62	123	335	1,340	668	100	36
2	42	43	e23	e54	e54	77	143	298	1,340	635	117	37
3	39	50	e25	e52	e52	69	198	264	1,080	655	123	39
4	35	69	e24	e50	e52	72	307	266	915	580	115	41
5	26	63	e27	e54	e50	74	240	307	835	483	98	38
6	26	58	e28	e56	e45	84	214	558	979	436	94	38
7	27	56	e32	e52	e42	81	276	658	978	383	88	31
8	24	59	e34	e47	e40	92	468	593	861	292	85	31
9	19	79	e37	e47	e41	113	310	554	774	240	93	34
10	18	134	e40	e47	e41	151	219	740	661	220	101	44
11	22	146	e45	e46	e45	165	177	964	599	209	96	52
12	36	107	e48	e45	e43	223	165	871	671	186	85	42
13	32	94	e52	e46	e45	268	196	681	700	166	76	43
14	29	81	e59	e48	e47	186	200	656	586	153	65	44
15	26	70	e64	e49	e54	132	173	689	641	127	61	40
16	23	63	e62	e50	e64	135	167	861	873	120	72	36
17	18	73	e56	e52	e60	139	196	1,330	1,080	104	82	38
18	19	63	e52	e53	e58	123	257	1,050	1,310	98	79	43
19	31	55	e50	e54	e54	132	279	1,120	1,340	93	73	41
20	49	42	e46	e56	e52	189	300	1,660	1,320	86	63	40
21	91	33	e44	e58	e56	149	263	2,080	1,290	81	59	44
22	103	27	e43	e58	64	137	213	2,310	1,280	74	61	52
23	75	e26	e42	e56	76	151	223	2,370	1,330	69	67	44
24	85	e24	e43	e54	79	147	279	2,510	1,220	70	58	37
25	85	e23	e44	e52	75	133	338	2,420	1,110	72	54	37
26	77	e22	e46	e50	78	116	402	2,060	1,130	71	51	34
27	77	e20	e47	e48	79	119	438	1,790	962	68	44	34
28	84	e21	e46	e50	73	166	469	1,670	809	73	39	36
29	90	e23	e47	e50	---	184	408	1,610	808	74	38	46
30	74	e23	e48	e50	---	161	357	1,640	723	78	43	36
31	74	---	e50	e52	---	130	---	1,590	---	89	40	---
TOTAL	1,500	1,705	1,326	1,588	1,569	4,160	7,998	36,505	29,545	6,753	2,320	1,188
MEAN	48.4	56.8	42.8	51.2	56.0	134	267	1,178	985	218	74.8	39.6
MAX	103	146	64	58	79	268	469	2,510	1,340	668	123	52
MIN	18	20	22	45	40	62	123	264	586	68	38	31
AC-FT	2,980	3,380	2,630	3,150	3,110	8,250	15,860	72,410	58,600	13,390	4,600	2,360

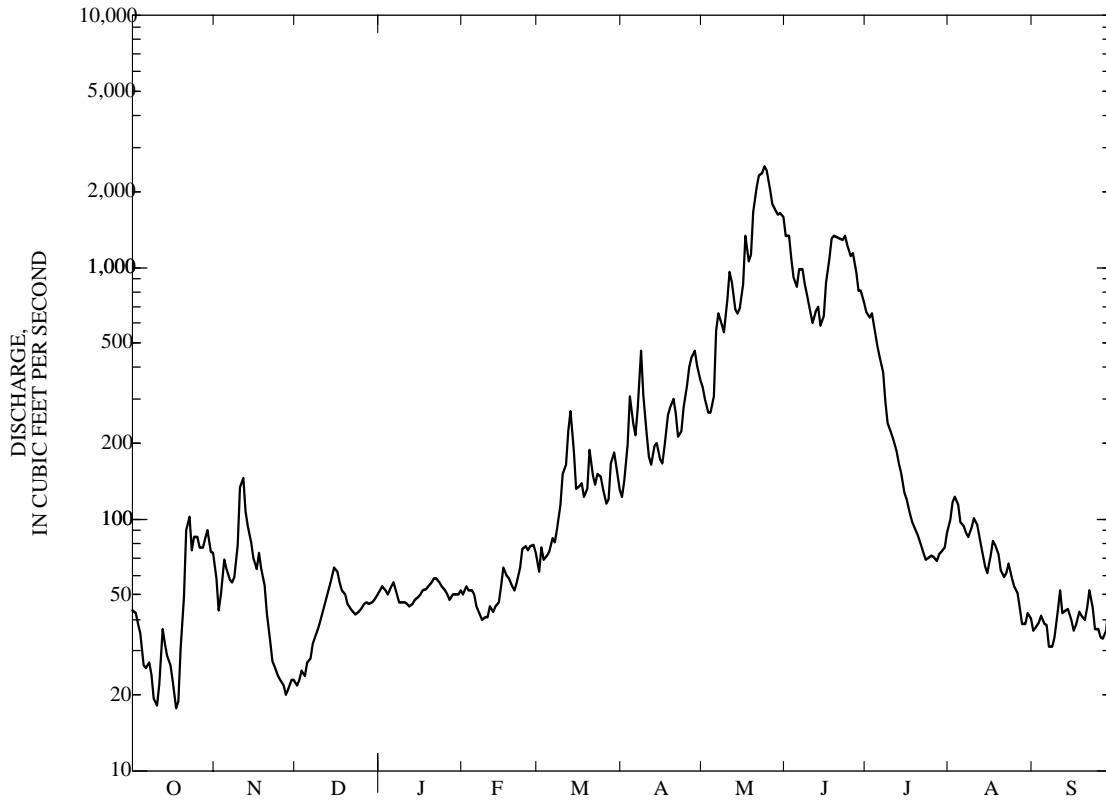
STATISTICS OF MONTHLY MEAN DATA FOR WATER YEARS 1984 - 2005, BY WATER YEAR (WY)

MEAN	30.6	28.3	25.9	29.1	35.8	106	292	753	746	195	64.8	53.9
MAX	48.4	56.8	42.8	51.2	56.0	150	602	1,291	1,890	980	181	225
(WY)	(2005)	(2005)	(2005)	(2005)	(2005)	(2004)	(1985)	(1986)	(1986)	(1995)	(1984)	(1984)
MIN	11.5	14.9	13.1	17.0	26.4	45.5	133	330	121	31.9	12.8	11.8
(WY)	(2002)	(2003)	(2003)	(2003)	(2002)	(2002)	(1995)	(1990)	(1992)	(2000)	(2002)	(1988)

10016900 BEAR RIVER AT EVANSTON, WY—Continued

SUMMARY STATISTICS	FOR 2004 CALENDAR YEAR		FOR 2005 WATER YEAR		WATER YEARS 1984 - 2005	
ANNUAL TOTAL	45,892		96,157		--	
ANNUAL MEAN	125		263		150	
HIGHEST ANNUAL MEAN	--		--		263	2005
LOWEST ANNUAL MEAN	--		--		81.3	2002
HIGHEST DAILY MEAN	831	May 7	2,510	May 24	3,160	May 16, 1984
LOWEST DAILY MEAN	18	Jan 5	18	Oct 10	3.2	Oct 20, 2001
ANNUAL SEVEN-DAY MINIMUM	20	Jan 1	22	Nov 25	5.3	Aug 18, 1988
MAXIMUM PEAK FLOW	--		2,830	May 24	3.68	May 16, 1984
MAXIMUM PEAK STAGE	--		6.34	May 24	7.35	May 16, 1984
ANNUAL RUNOFF (AC-FT)	91,030		190,700		108,600	
10 PERCENT EXCEEDS	315		861		364	
50 PERCENT EXCEEDS	62		73		46	
90 PERCENT EXCEEDS	25		34		15	

e Estimated.



10020100 BEAR RIVER ABOVE RESERVOIR, NEAR WOODRUFF, UT

Bear River Basin

LOCATION.--Lat 41°26'04", long 111°01'01" referenced to North American Datum of 1927, in NE ¼ NW ¼ NW ¼ sec.29, T.17 N., R.120 W., Uinta County, Wyoming, Hydrologic Unit 16010101, on right bank 9.3 mi upstream from Woodruff Narrows Dam and 10 mi southeast of Woodruff.

DRAINAGE AREA.--755 mi².

WATER-DISCHARGE RECORDS

REVISED RECORDS.--WDR UT-74-1: Drainage area.

PERIOD OF RECORD.--October 1961 to current year.

GAGE.--Water-stage recorder. Elevation of gage is 6,455 ft above NGVD of 1929, from river-profile map.

REMARKS.--Records good except for estimated daily discharges, which are fair. Diversion for irrigation of about 43,500 acres above station.

EXTREMES FOR PERIOD OF RECORD.--Maximum discharge, 4,150 ft³/s, Jun 2, 1983, gage height, 6.17 ft; minimum, no flow several days during Aug, Sep 1988, and Sep 2002.

EXTREMES FOR CURRENT YEAR.--Maximum discharge, 2,120 ft³/s, May 25, gage height 5.40; minimum daily discharge, 12 ft³/s, Oct 12.

10020100 BEAR RIVER ABOVE RESERVOIR, NEAR WOODRUFF, UT—Continued

DISCHARGE, CUBIC FEET PER SECOND
WATER YEAR OCTOBER 2004 TO SEPTEMBER 2005
DAILY MEAN VALUES

[e, estimated]

Day	Oct	Nov	Dec	Jan	Feb	Mar	Apr	May	Jun	Jul	Aug	Sep
1	19	80	e18	e53	e56	e64	e92	338	1,230	523	39	33
2	32	60	e20	e53	e58	e64	81	294	1,260	443	48	31
3	31	54	e25	e53	e60	e66	115	239	1,050	422	71	28
4	30	69	e28	e54	e62	e66	203	222	863	405	73	28
5	29	75	e30	e54	e63	e66	211	237	712	336	64	29
6	24	70	e33	e54	e62	e68	165	371	747	293	54	26
7	21	68	e36	e55	e55	e78	182	570	855	263	51	26
8	20	68	e37	e56	e56	e78	320	589	749	213	48	21
9	18	79	e38	e58	e54	e79	301	497	637	170	45	23
10	15	141	e39	e57	e56	e80	195	548	521	153	54	24
11	13	169	e40	e56	e57	e79	151	986	427	144	70	34
12	12	139	e41	e55	e59	e82	122	964	462	136	57	36
13	15	120	e43	e54	e60	e86	121	733	573	120	59	33
14	18	105	e44	e55	e62	e89	132	603	449	111	53	35
15	20	89	e46	e56	e62	e89	130	598	434	91	47	31
16	20	81	e44	e56	e62	e93	112	678	598	79	45	29
17	21	82	e43	e57	e63	e89	116	939	791	71	56	29
18	21	83	e42	e58	e63	e88	153	1,040	971	60	66	28
19	21	74	e41	e59	e63	e90	189	891	1,110	59	60	30
20	39	65	e40	e60	e61	e90	204	1,200	1,090	47	52	30
21	72	60	e40	e61	e60	e89	192	1,530	1,060	33	47	30
22	106	47	e42	e62	e60	e88	164	1,760	1,060	37	46	33
23	94	53	e43	e63	e59	e89	173	1,890	1,110	35	47	36
24	78	55	e40	e62	e60	e89	198	1,940	1,070	34	48	31
25	95	33	e49	e61	e61	e88	293	2,050	950	29	41	28
26	90	41	e49	e60	e63	e87	385	2,020	910	25	39	27
27	85	47	e50	e59	e63	e87	404	1,770	860	29	32	25
28	88	e33	e50	e62	e64	e91	434	1,560	669	26	29	23
29	103	e15	e51	e61	---	e99	421	1,470	655	24	29	23
30	92	e16	e52	e57	---	e97	362	1,460	573	24	27	24
31	87	---	e52	e56	---	e95	---	1,600	---	26	32	---
Total	1,429	2,171	1,246	1,777	1,684	2,583	6,321	31,587	24,446	4,461	1,529	864
Mean	46.1	72.4	40.2	57.3	60.1	83.3	211	1,019	815	144	49.3	28.8
Max	106	169	52	63	64	99	434	2,050	1,260	523	73	36
Min	12	15	18	53	54	64	81	222	427	24	27	21
Ac-ft	2,830	4,310	2,470	3,520	3,340	5,120	12,540	62,650	48,490	8,850	3,030	1,710

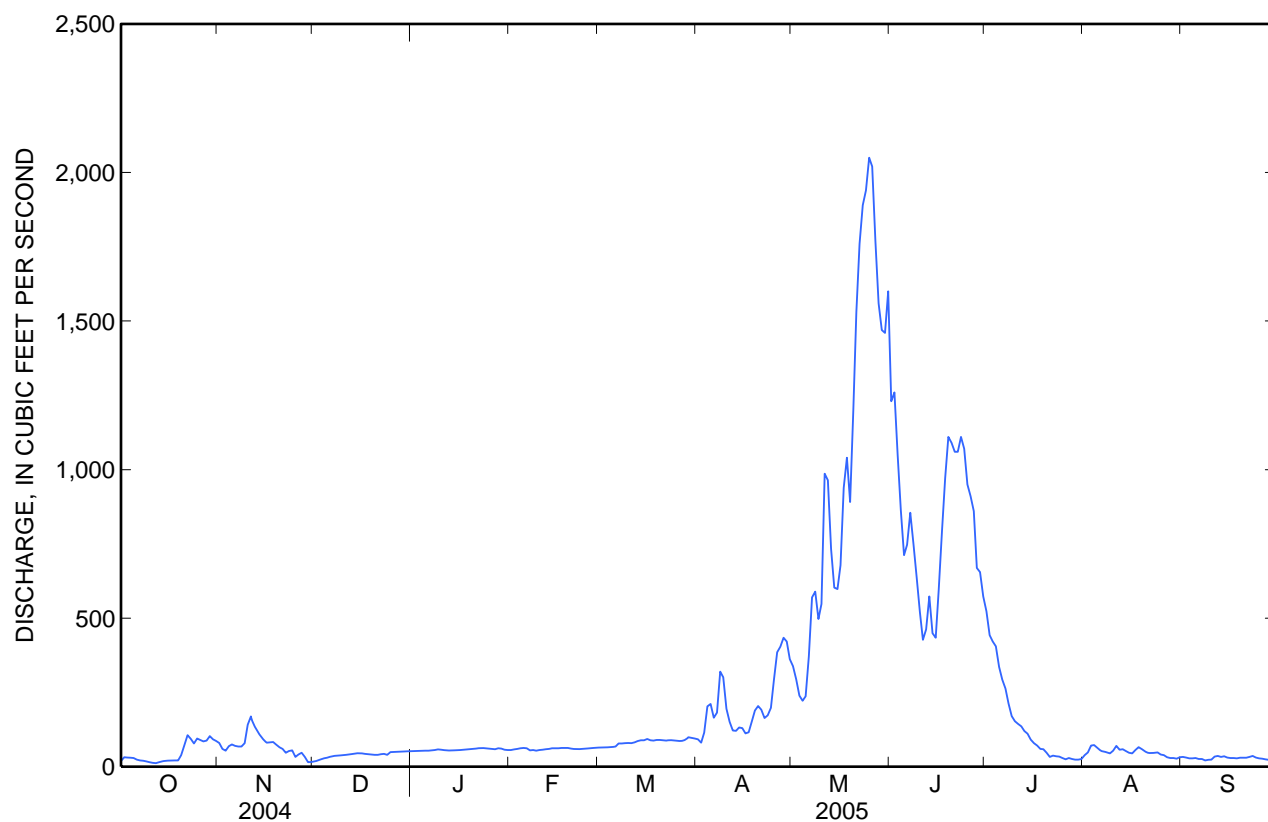
STATISTICS OF MONTHLY MEAN DATA FOR WATER YEARS 1962 - 2005, BY WATER YEAR (WY)

	Oct	Nov	Dec	Jan	Feb	Mar	Apr	May	Jun	Jul	Aug	Sep
Mean	69.2	70.2	68.9	65.6	80.1	161	323	786	816	189	48.7	47.1
Max	437	198	181	147	312	627	671	1,957	2,564	1,191	340	288
(WY)	(1983)	(1974)	(1984)	(1984)	(1986)	(1986)	(1969)	(1984)	(1986)	(1995)	(1983)	(1983)
Min	3.03	6.06	7.21	6.76	10.4	26.8	77.7	104	54.6	4.41	0.68	0.49
(WY)	(1965)	(1989)	(1989)	(1989)	(2003)	(1977)	(1977)	(1977)	(1992)	(2000)	(2000)	(1988)

10020100 BEAR RIVER ABOVE RESERVOIR, NEAR WOODRUFF, UT—Continued

SUMMARY STATISTICS

	Calendar Year 2004		Water Year 2005		Water Years 1962 - 2005	
Annual total	35,337		80,098			
Annual mean	96.5		219		227	
Highest annual mean					583	1986
Lowest annual mean					45.1	1977
Highest daily mean	617	May 7	2,050	May 25	3,900	Jun 2, 1983
Lowest daily mean	12	Oct 12	12	Oct 12	0.00	Aug 23, 1988
Annual seven-day minimum	16	Oct 8	16	Oct 8	0.00	Aug 30, 1988
Annual runoff (ac-ft)	70,090		158,900		164,500	
10 percent exceeds	242		720		669	
50 percent exceeds	48		62		80	
90 percent exceeds	24		28		8.6	



10020100 BEAR RIVER ABOVE RESERVOIR, NEAR WOODRUFF, UT—Continued

WATER-QUALITY RECORDS

PERIOD OF RECORD.--Water years 1969 to current year.

WATER-QUALITY DATA, WATER YEAR OCTOBER 2004 TO SEPTEMBER 2005

Date	Time	Instantaneous discharge, cfs (00061)	Barometric pressure, mm Hg (00025)	Dissolved oxygen, mg/L (00300)	Dissolved oxygen, percent of saturation (00301)	pH, water, unfltrd field, std units (00400)	Specific conductance, wat unfltrd uS/cm 25 degC (00095)	Temperature, air, deg C (00020)	Temperature, water, deg C (00010)	Hardness, water, mg/L as CaCO3 (00900)	Calcium water, fltrd, mg/L (00915)	Magnesium, water, fltrd, mg/L (00925)	Potassium, water, fltrd, mg/L (00935)
NOV 10...	1510	157	605	10.6	105	8.5	384	6.0	5.0	180	44.9	16.4	2.28
MAR 22...	0810	140	600	10.4	95	8.1	513	1.0	1.5	250	58.4	25.9	4.07
JUN 29...	0915	703	607	8.0	94	7.9	194	13.5	12.0	93	24.5	7.86	.88
AUG 04...	0915	81	604	7.0	95	8.0	463	18.0	18.5	220	50.8	22.6	2.78

Date	Sodium adsorption ratio (00931)	Sodium, water, fltrd, mg/L (00930)	Sodium, percent (00932)	Alkalinity, wat flt fxd end lab, mg/L as CaCO3 (29801)	Chloride, water, fltrd, mg/L (00940)	Fluoride, water, fltrd, mg/L (00950)	Silica, water, fltrd, mg/L (00955)	Sulfate water, fltrd, mg/L (00945)	Residue water, fltrd, sum of constituents mg/L (70301)	Residue water, fltrd, tons/ acre-ft (70303)	Residue water, fltrd, tons/d (70302)	Ammonia water, fltrd, mg/L as N (00608)	Nitrite + nitrate water fltrd, mg/L as N (00631)
NOV 10...	.5	15.4	16	165	16.4	.1	6.7	11.2	213	.29	90.4	<.04	.15
MAR 22...	.6	20.9	15	220	31.0	.2	10.1	21.0	304	.41	115	.05	.06
JUN 29...	.2	4.65	10	91	5.26	E.1	5.0	5.4	108	.15	205	<.04	<.06
AUG 04...	.4	14.4	12	203	14.3	.2	5.9	19.9	252	.34	55.5	<.04	<.06

Date	Nitrite water, fltrd, mg/L as N (00613)	Orthophosphate, water, fltrd, mg/L as P (00671)	Suspended sediment concentration mg/L (80154)	Suspended sediment discharge, tons/d (80155)
NOV 10...	<.008	.02	36	15
MAR 22...	<.008	.03	251	95
JUN 29...	<.008	<.02	40	76
AUG 04...	<.008	<.02	6	1.3

< -- Less than.
E -- Estimated.

10020300 BEAR RIVER BELOW RESERVOIR, NEAR WOODRUFF, UT

Bear River Basin

LOCATION.--Lat 41°30'20", long 111°00'50" referenced to North American Datum of 1927, in NE ¼ NE ¼ NW ¼ sec.32, T.18 N., R.120 W., Uinta County, Wyoming, Hydrologic Unit 16010101, on right bank 1,100 ft downstream from Woodruff Narrows Dam, 1.6 mi upstream from Salt Creek, 5.4 mi upstream from Wyoming-Utah State line, and 7.7 mi east of Woodruff.

DRAINAGE AREA.--784 mi².

WATER-DISCHARGE RECORDS

REVISED RECORDS.--WDR UT-74-1: Drainage area.

PERIOD OF RECORD.--October 1961 to current year.

GAGE.--Water-stage recorder and concrete control. Datum of gage is 6,398.96 ft above NGVD of 1929 (levels by Utah Water Resources Division from Bureau of Reclamation bench mark). Prior to September 26, 1962, at site 175 ft upstream at same datum.

REMARKS.--Records good. Flow regulated by Woodruff Narrows Reservoir (station 10020200) beginning January 1962. Diversions for irrigation of about 43,500 acres above station.

EXTREMES FOR PERIOD OF RECORD.--Maximum discharge, 3,820 ft³/s, Jun 2, 1983, gage height, 8.26 ft; no flow Jul 4, 5, 1962, Aug 30, 31, Sep 1, 2, 6, 7, 1979, Oct 30, 1980.

EXTREMES FOR CURRENT YEAR.--Maximum discharge, 1,140 ft³/s, May 11, Jun 20-24, gage height 5.88 ft; minimum daily discharge, 13 ft³/s, many days.

10020300 BEAR RIVER BELOW RESERVOIR, NEAR WOODRUFF, UT—Continued

DISCHARGE, CUBIC FEET PER SECOND
WATER YEAR OCTOBER 2004 TO SEPTEMBER 2005
DAILY MEAN VALUES

[e, estimated]

Day	Oct	Nov	Dec	Jan	Feb	Mar	Apr	May	Jun	Jul	Aug	Sep
1	14	13	e13	13	14	15	14	444	796	902	33	46
2	14	13	e13	14	15	15	14	364	702	893	42	46
3	14	13	e13	14	15	15	14	308	733	887	60	46
4	14	13	e13	14	15	15	14	247	756	883	60	32
5	14	13	e13	14	15	15	14	200	774	875	60	25
6	14	14	e13	14	15	15	14	201	775	866	60	28
7	13	14	13	13	15	15	e140	203	433	501	59	28
8	13	14	13	13	15	15	e260	301	807	278	52	29
9	13	14	13	13	15	14	e310	466	948	274	45	29
10	13	14	13	14	14	13	e360	423	946	223	45	28
11	13	14	13	13	15	13	e320	779	749	111	45	29
12	13	14	13	14	15	13	243	1,040	1,040	83	44	29
13	13	14	13	14	14	13	193	953	1,020	83	45	29
14	13	14	13	14	14	13	179	939	987	82	44	30
15	13	14	14	14	15	13	165	923	977	82	44	30
16	13	15	14	14	15	13	165	782	972	82	43	30
17	13	15	14	14	15	14	165	673	967	81	43	30
18	13	15	14	14	15	14	114	785	963	81	42	30
19	13	15	14	14	15	14	74	863	963	80	42	30
20	13	15	14	14	15	14	73	915	1,060	68	43	29
21	13	15	14	14	15	14	70	966	1,130	45	43	29
22	13	15	14	15	15	14	73	979	1,120	36	43	29
23	13	15	14	15	15	14	73	993	1,120	36	43	29
24	13	15	14	15	15	14	73	973	1,120	36	43	29
25	13	14	14	15	15	14	139	802	1,120	35	44	21
26	13	13	14	15	15	14	374	816	1,110	35	43	14
27	13	13	14	15	15	14	481	861	1,110	35	45	13
28	13	13	14	15	15	14	479	894	1,100	34	45	13
29	13	13	14	15	---	14	476	905	1,100	34	45	13
30	13	e13	14	14	---	14	476	930	1,050	33	45	13
31	13	---	14	14	---	14	---	936	---	33	46	---
Total	409	419	420	437	416	435	5,559	21,864	28,448	7,807	1,436	836
Mean	13.2	14.0	13.5	14.1	14.9	14.0	185	705	948	252	46.3	27.9
Max	14	15	14	15	15	15	481	1,040	1,130	902	60	46
Min	13	13	13	13	14	13	14	200	433	33	33	13
Ac-ft	811	831	833	867	825	863	11,030	43,370	56,430	15,490	2,850	1,660

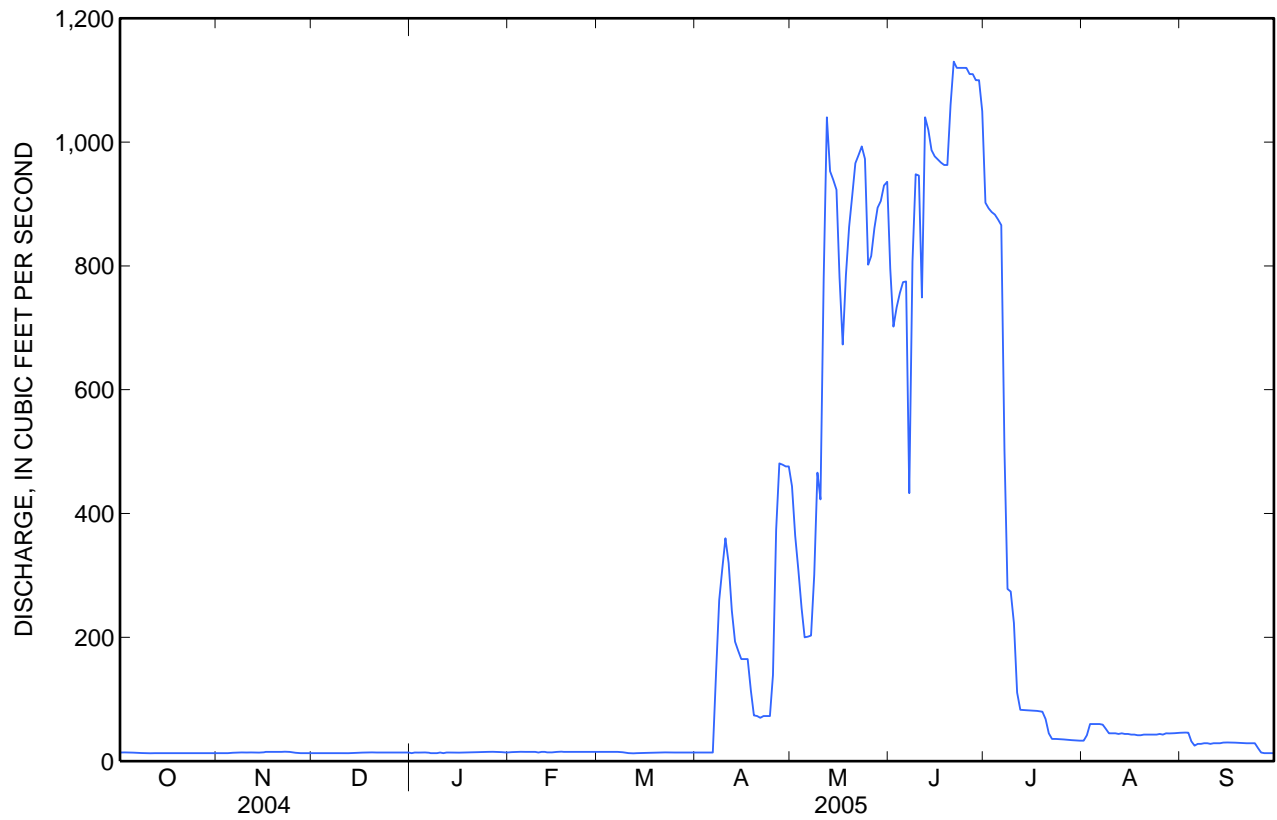
STATISTICS OF MONTHLY MEAN DATA FOR WATER YEARS 1962 - 2005, BY WATER YEAR (WY)

	Oct	Nov	Dec	Jan	Feb	Mar	Apr	May	Jun	Jul	Aug	Sep
Mean	55.6	51.6	45.0	42.9	45.6	91.4	265	753	960	277	75.8	58.4
Max	425	421	184	153	171	473	891	1,828	2,437	913	331	278
(WY)	(1983)	(1983)	(1983)	(1985)	(1971)	(1972)	(1985)	(1984)	(1983)	(1975)	(1983)	(1983)
Min	3.89	0.12	4.28	4.37	4.71	4.70	0.34	27.8	356	10.5	3.91	3.65
(WY)	(1990)	(1981)	(1978)	(1978)	(1978)	(1978)	(1977)	(1977)	(2002)	(2002)	(1979)	(1979)

10020300 BEAR RIVER BELOW RESERVOIR, NEAR WOODRUFF, UT—Continued

SUMMARY STATISTICS

	Calendar Year 2004		Water Year 2005		Water Years 1962 - 2005	
Annual total	29,086.4		68,486			
Annual mean	79.5		188		227	
Highest annual mean					509	1983
Lowest annual mean					44.3	1977
Highest daily mean	869	Jun 8	1,130	Jun 21	3,630	Jun 3, 1983
Lowest daily mean	9.7	Mar 25	13	Oct 7	0.00	Jul 4, 1962
Annual seven-day minimum	9.8	Mar 25	13	Oct 7	0.07	Nov 26, 1980
Annual runoff (ac-ft)	57,690		135,800		164,400	
10 percent exceeds	224		889		786	
50 percent exceeds	15		15		39	
90 percent exceeds	13		13		9.9	





Water-Data Report UT-2005

10023000 BIG CREEK NEAR RANDOLPH, UT

Bear River Basin

LOCATION.--Lat 41°36'36", long 111°15'12" referenced to North American Datum of 1927, in NW ¼ NW ¼ NE ¼ sec.15, T.10 W., R.6 E., Rich County, Hydrologic Unit 16010101, on left bank 2.7 mi downstream from main forks and 5.2 mi southwest of Randolph.

DRAINAGE AREA.--52.4 mi².

WATER-DISCHARGE RECORDS

PERIOD OF RECORD.--March 1939 to September 1944 (fragmentary), October 1949 to September 1970, October 1986 to current year.

GAGE.--Water-stage recorder. Elevation of gage is 6,410 ft above NGVD of 1929, from topographic map. March 1939 to September 1944 (fragmentary), at site 0.2 mi downstream at different datum, October 1949 to September 1959 at site 200 ft upstream at different datum, September 1959 to September 1970 at site 300 ft upstream at different datum.

REMARKS.--Records good except for estimated daily discharges, which are poor.

EXTREMES FOR PERIOD OF RECORD.--Maximum discharge, 337 ft³/s, Jul 11, 1957, gage height, 3.75 ft, site and datum then in use; minimum discharge, 0.9 ft³/s, Aug 4, 1961.

EXTREMES FOR CURRENT YEAR.--Peak discharges greater than base discharge of 60 ft³/s and (or) maximum (*):

Date	Time	Discharge (ft ³ /s)	Gage height (ft)
May 10	1730	*68	*5.60

Minimum daily discharge, 1.6 ft³/s, several days in Dec.

10023000 BIG CREEK NEAR RANDOLPH, UT—Continued

DISCHARGE, CUBIC FEET PER SECOND
WATER YEAR OCTOBER 2004 TO SEPTEMBER 2005
DAILY MEAN VALUES

[e, estimated]

Day	Oct	Nov	Dec	Jan	Feb	Mar	Apr	May	Jun	Jul	Aug	Sep
1	2.5	4.1	e3.0	e1.7	e2.8	e2.7	6.2	27	21	10	9.2	8.1
2	2.5	e4.8	e2.8	e1.7	e2.8	e2.7	9.7	27	19	10	9.8	8.1
3	2.4	5.4	e2.6	e1.7	e2.9	e2.7	14	28	18	10	9.7	8.0
4	2.4	4.7	e2.4	e1.7	e3.0	e2.6	8.8	29	17	10	8.9	7.9
5	2.4	4.3	e2.1	e1.7	e3.2	e2.6	7.5	32	16	10	8.9	7.9
6	2.3	4.2	e1.8	e1.7	e3.5	e2.9	8.5	37	16	10	8.9	7.8
7	2.3	4.3	e1.6	e1.8	e3.7	e3.2	9.6	42	17	10	8.9	7.8
8	2.3	4.4	e1.6	e1.8	e3.8	e3.4	9.6	48	16	9.7	8.8	7.9
9	2.3	4.4	e1.6	e1.8	e3.9	e3.6	8.0	52	14	9.7	8.9	8.1
10	2.3	4.4	e1.6	e1.8	e3.9	e3.8	6.9	59	14	9.9	8.7	8.3
11	2.7	4.9	e1.6	e1.9	e4.0	e4.0	6.6	58	13	9.8	8.6	8.2
12	2.5	5.3	e1.6	e1.9	e4.2	e4.2	6.5	48	15	9.6	8.4	8.8
13	2.4	5.2	e1.6	e1.9	e4.6	e4.3	7.0	44	13	9.5	8.4	8.7
14	2.4	4.7	e1.6	e1.9	e5.3	e4.5	7.4	43	12	9.5	8.4	8.6
15	2.4	4.5	e1.6	e1.9	e5.5	e4.7	7.2	45	12	9.3	8.1	8.5
16	2.4	4.1	e1.7	e2.0	e5.6	e5.0	7.1	49	12	9.3	8.4	8.3
17	2.6	4.4	e1.7	e2.1	e5.2	5.1	7.5	53	11	9.2	8.7	8.5
18	3.8	4.3	e1.7	e2.3	e5.0	6.5	9.1	47	11	9.4	8.5	8.5
19	4.2	4.3	e1.7	e2.4	e4.8	6.9	9.8	42	11	9.5	8.2	8.4
20	9.3	4.2	e1.7	e2.4	e4.2	7.8	11	42	10	9.2	8.1	8.1
21	7.3	e4.2	e1.7	e2.4	e3.9	6.5	8.8	41	11	9.3	8.0	8.5
22	5.0	e4.2	e1.6	e2.5	e3.6	6.5	7.7	40	11	9.1	8.3	8.6
23	4.6	e4.2	e1.6	e2.6	e3.3	6.5	8.2	37	11	9.0	8.2	8.4
24	5.4	e4.1	e1.6	e2.6	e3.1	6.5	9.8	35	11	9.1	7.9	8.4
25	5.2	e4.1	e1.6	e2.7	e3.0	5.4	14	32	11	9.2	7.8	8.4
26	5.4	e4.0	e1.6	e2.7	e2.9	5.2	13	29	10	9.1	7.8	8.3
27	5.0	e3.9	e1.6	e2.8	e2.8	6.5	16	27	10	9.1	8.1	8.4
28	5.3	e3.6	e1.7	e2.8	e2.8	11	25	25	11	8.8	8.1	8.3
29	4.9	e3.3	e1.7	e2.8	---	7.8	29	23	11	8.5	7.9	8.3
30	4.7	e3.0	e1.7	e2.8	---	6.4	28	24	11	8.7	7.9	8.2
31	4.6	---	e1.7	e2.8	---	6.0	---	21	---	9.0	8.1	---
Total	115.8	129.5	55.7	67.6	107.3	157.5	327.5	1,186	396	292.5	262.6	248.3
Mean	3.74	4.32	1.80	2.18	3.83	5.08	10.9	38.3	13.2	9.44	8.47	8.28
Max	9.3	5.4	3.0	2.8	5.6	11	29	59	21	10	9.8	8.8
Min	2.3	3.0	1.6	1.7	2.8	2.6	6.2	21	10	8.5	7.8	7.8
Ac-ft	230	257	110	134	213	312	650	2,350	785	580	521	493

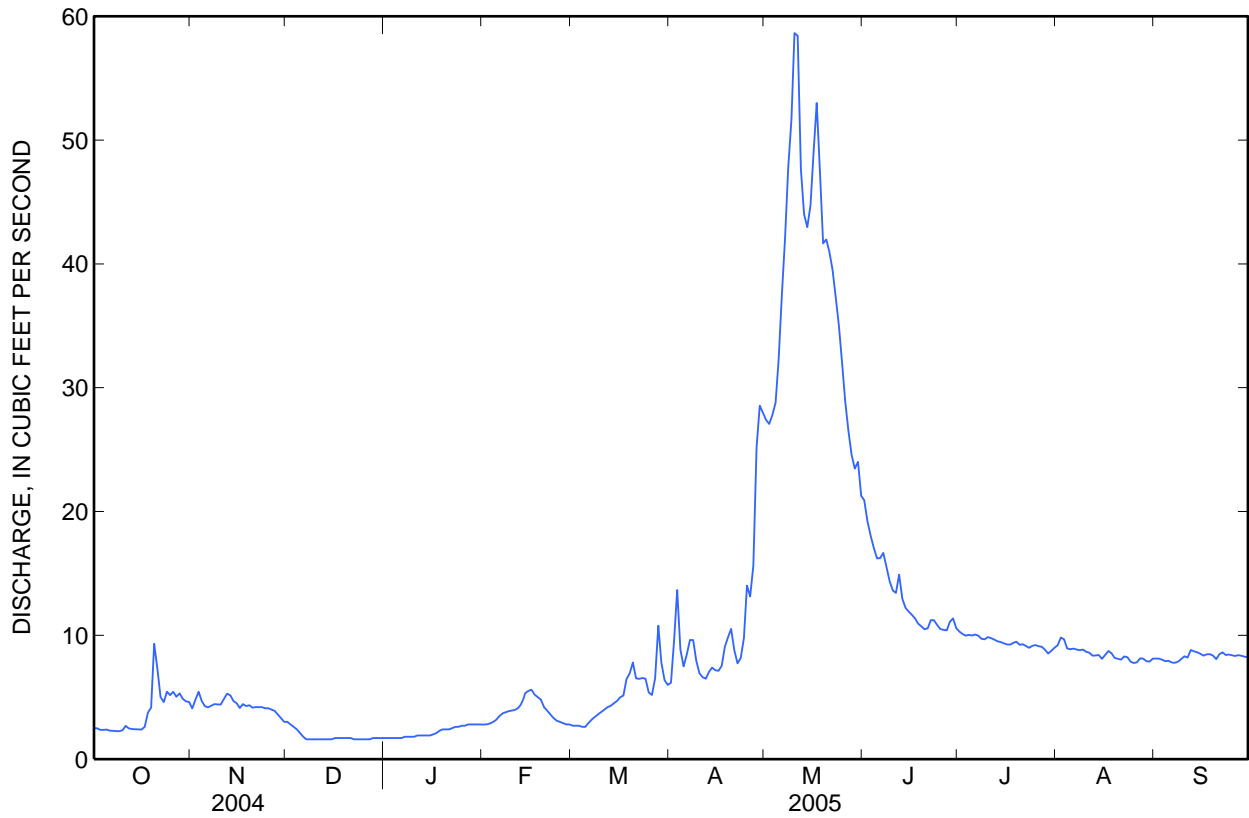
STATISTICS OF MONTHLY MEAN DATA FOR WATER YEARS 1950-70, 1987-2005, BY WATER YEAR (WY)

	Oct	Nov	Dec	Jan	Feb	Mar	Apr	May	Jun	Jul	Aug	Sep
Mean	11.7	10.8	9.74	8.98	8.82	10.1	14.9	30.2	21.2	15.6	13.2	12.1
Max	26.7	25.9	23.7	23.4	22.7	25.4	42.3	95.4	62.2	40.3	32.8	29.2
(WY)	(2000)	(1987)	(1987)	(1987)	(1999)	(1999)	(1951)	(1952)	(1952)	(1950)	(1999)	(1999)
Min	2.14	1.95	1.80	1.77	1.46	2.65	3.56	2.85	1.86	1.48	1.29	1.80
(WY)	(1993)	(2004)	(2005)	(2004)	(2004)	(1991)	(1991)	(1992)	(1992)	(1961)	(1992)	(1992)

10023000 BIG CREEK NEAR RANDOLPH, UT—Continued

SUMMARY STATISTICS

	Calendar Year 2004		Water Year 2005		Water Years 1950-70, 1987-2005	
Annual total	1,014.24		3,346.3			
Annual mean	2.77		9.17		14.0	
Highest annual mean					32.1	1952
Lowest annual mean					2.49	2004
Highest daily mean	9.3	Oct 20	59	May 10	140	May 18, 1950
Lowest daily mean	0.94	Aug 13	1.6	Dec 7	0.94	Aug 13, 2004
Annual seven-day minimum	1.1	Aug 8	1.6	Dec 7	1.1	Aug 8, 1992
Annual runoff (ac-ft)	2,010		6,640		10,130	
10 percent exceeds	4.7		18		28	
50 percent exceeds	2.3		7.1		10	
90 percent exceeds	1.4		1.9		3.3	



10028500 BEAR RIVER BELOW PIXLEY DAM, NEAR COKEVILLE, WY

Bear River Basin

LOCATION.--Lat 41°56'20", long 110°59'05" referenced to North American Datum of 1927, in SW ¼ SE ¼ SE ¼ sec.25, T.23 N., R.120 W., Lincoln County, Hydrologic Unit 16010102, 800 ft downstream from Pixley Dam, 11 mi south of Cokeville, and 17.5 mi downstream from Twin Creek.

DRAINAGE AREA.--2,032 mi².

WATER-DISCHARGE RECORDS

REVISED RECORDS.--WDR UT-74-1: Drainage area.

PERIOD OF RECORD.--October 1941 to November 1943 (published as Bear River near Cokeville), October 1952 to September 1956, May 1958 to current year (seasonal only). Monthly discharge only for some periods, published in WSP 1314.

GAGE.--Water-stage recorder. Elevation of gage is 6,185 ft above NGVD of 1929, from river-profile map. October 31, 1941 to November 30, 1943, at site 200 ft downstream at different datum.

REMARKS.--Records fair. Natural flow of stream affected by diversions for irrigation, return flow from irrigated areas, and regulation by upstream reservoirs.

EXTREMES FOR PERIOD OF RECORD.--Maximum daily discharge, 2,300 ft³/s, Mar 25, 1956; minimum daily discharge, 0.09 ft³/s, Sep 8, 2002.

10028500 BEAR RIVER BELOW PIXLEY DAM, NEAR COKEVILLE, WY—Continued

DISCHARGE, CUBIC FEET PER SECOND
WATER YEAR OCTOBER 2004 TO SEPTEMBER 2005
DAILY MEAN VALUES

[e, estimated]

Day	Oct	Nov	Dec	Jan	Feb	Mar	Apr	May	Jun	Jul	Aug	Sep			
1	9.3	---	---	---	---	---	---	656	528	879	44	34			
2	9.4	---	---	---	---	---	---	610	549	927	47	35			
3	9.0	---	---	---	---	---	---	579	555	887	52	34			
4	9.0	---	---	---	---	---	---	526	535	870	51	35			
5	10	---	---	---	---	---	---	426	494	838	49	37			
6	e12	---	---	---	---	---	---	339	468	847	49	35			
7	---	---	---	---	---	---	---	340	489	815	66	33			
8	---	---	---	---	---	---	---	449	503	842	75	32			
9	---	---	---	---	---	---	---	401	514	873	59	32			
10	---	---	---	---	---	---	---	342	510	809	62	33			
11	---	---	---	---	---	---	---	412	523	592	69	33			
12	---	---	---	---	---	---	---	481	553	463	67	32			
13	---	---	---	---	---	---	---	463	583	357	61	32			
14	---	---	---	---	---	---	---	534	608	274	59	33			
15	---	---	---	---	---	---	---	568	678	234	57	33			
16	---	---	---	---	---	---	---	583	719	203	57	32			
17	---	---	---	---	---	---	---	596	718	200	52	32			
18	---	---	---	---	---	---	---	577	696	185	59	31			
19	---	---	---	---	---	---	---	479	670	161	60	31			
20	---	---	---	---	---	---	---	387	637	144	59	31			
21	---	---	---	---	---	---	---	385	622	126	58	29			
22	---	---	---	---	---	---	---	418	618	116	57	28			
23	---	---	---	---	---	---	---	---	462	629	106	52	28		
24	---	---	---	---	---	---	---	---	143	462	629	106	52	28	
25	---	---	---	---	---	---	---	---	138	504	651	95	52	28	
26	---	---	---	---	---	---	---	---	162	527	673	74	51	27	
27	---	---	---	---	---	---	---	---	---	286	531	717	57	48	26
28	---	---	---	---	---	---	---	---	---	284	495	740	60	47	26
29	---	---	---	---	---	---	---	---	---	332	432	755	57	43	25
30	---	---	---	---	---	---	---	---	---	534	414	765	57	39	25
31	---	---	---	---	---	---	---	---	---	613	444	812	55	36	25
31	---	---	---	---	---	---	---	---	---	480	---	50	36	---	---
Total	---	---	---	---	---	---	---	14,840	18,512	12,253	1,673	927			
Mean	---	---	---	---	---	---	---	479	617	395	54.0	30.9			
Max	---	---	---	---	---	---	---	656	812	927	75	37			
Min	---	---	---	---	---	---	---	339	468	50	36	25			
Ac-ft	---	---	---	---	---	---	---	29,440	36,720	24,300	3,320	1,840			

Water-Data Report UT-2005

10032000 SMITHS FORK NEAR BORDER, WY

Bear River Basin

LOCATION.--Lat 42°17'36", long 110°52'18" referenced to North American Datum of 1927, in NE ¼ SW ¼ SW ¼ sec.28, T.27 N., R.118 W., Lincoln County, Hydrologic Unit 16010102, on left bank 4.9 mi upstream from Howland Creek, 5.6 mi downstream from Hobble Creek, and 12.4 mi northeast of Border.

DRAINAGE AREA.--165 mi².

WATER-DISCHARGE RECORDS

PERIOD OF RECORD.--May 1942 to current year.

REVISED RECORDS.--WSP 1734: 1952(M).

GAGE.--Water-stage recorder. Elevation of gage is 6,720 ft above NGVD of 1929, from topographic map. Prior to October 16, 1945, at site 1.2 mi downstream at different datum. October 16, 1945 to November 1986 at site 0.4 mi downstream at different datum.

REMARKS.--Records good except for estimated daily discharges, which are poor. One diversion for irrigation of about 200 acres above station.

EXTREMES FOR PERIOD OF RECORD.--Maximum discharge, 2,100 ft³/s, Jun 4, 1986, gage height, 5.66 ft; minimum, 21 ft³/s, Mar 29, 1975, Jan 24, 1978.

EXTREMES FOR CURRENT YEAR.--Maximum discharge, 1,060 ft³/s, May 23, gage height, 3.48 ft; minimum daily discharge, 49 ft³/s, Mar 3.

10032000 SMITHS FORK NEAR BORDER, WY—Continued

DISCHARGE, CUBIC FEET PER SECOND
WATER YEAR OCTOBER 2004 TO SEPTEMBER 2005
DAILY MEAN VALUES

[e, estimated]

Day	Oct	Nov	Dec	Jan	Feb	Mar	Apr	May	Jun	Jul	Aug	Sep
1	77	e90	e62	e73	e70	e50	55	313	871	449	200	120
2	77	e87	e61	e74	e76	e50	61	314	828	432	205	122
3	77	e84	e60	e78	e70	e50	66	324	773	419	196	116
4	77	82	e58	e70	e68	51	70	334	726	402	188	113
5	73	80	e57	e74	e66	49	68	379	703	384	186	112
6	72	80	e55	e73	e65	51	68	517	703	368	180	110
7	70	79	e55	e78	e68	53	80	542	699	356	174	109
8	69	82	e55	e83	e65	52	99	510	655	342	166	107
9	68	83	e60	e75	e64	52	97	551	615	328	163	110
10	68	82	e65	e68	e62	55	100	580	580	319	161	112
11	69	84	e70	e62	e60	57	101	567	553	306	160	113
12	69	83	e75	e62	e62	59	111	539	566	295	155	114
13	71	81	e72	e61	e64	62	135	529	523	288	150	113
14	69	77	e73	e60	e66	61	156	560	512	285	145	109
15	68	75	e72	e63	e67	61	155	592	523	278	143	107
16	68	77	e70	e63	e64	61	172	657	568	269	146	104
17	68	79	e71	e64	e61	62	218	738	613	264	151	103
18	81	74	e71	e65	e60	62	267	699	656	259	151	102
19	75	78	e72	e68	e61	62	280	704	665	252	151	101
20	107	75	e74	e72	e64	65	322	813	665	244	141	100
21	107	e75	e75	e75	e65	59	298	944	661	239	137	103
22	91	e75	e76	e77	e63	58	290	991	678	234	136	105
23	88	76	e77	e75	e57	70	329	1,060	673	233	134	103
24	90	74	e76	e74	e55	65	350	1,010	648	230	131	106
25	85	76	e75	e73	e53	61	363	984	610	237	128	105
26	87	73	e74	e72	e50	60	408	942	575	223	126	102
27	84	e72	e75	e70	e50	60	432	905	544	216	126	101
28	93	e68	e73	e65	e50	59	431	883	520	211	124	102
29	92	e70	e76	e60	---	57	367	877	501	207	122	101
30	86	e65	e73	e60	---	56	335	898	469	212	121	100
31	87	---	e76	e62	---	56	---	852	---	212	120	---
Total	2,463	2,336	2,134	2,149	1,746	1,786	6,284	21,108	18,876	8,993	4,717	3,225
Mean	79.5	77.9	68.8	69.3	62.4	57.6	209	681	629	290	152	108
Max	107	90	77	83	76	70	432	1,060	871	449	205	122
Min	68	65	55	60	50	49	55	313	469	207	120	100
Ac-ft	4,890	4,630	4,230	4,260	3,460	3,540	12,460	41,870	37,440	17,840	9,360	6,400

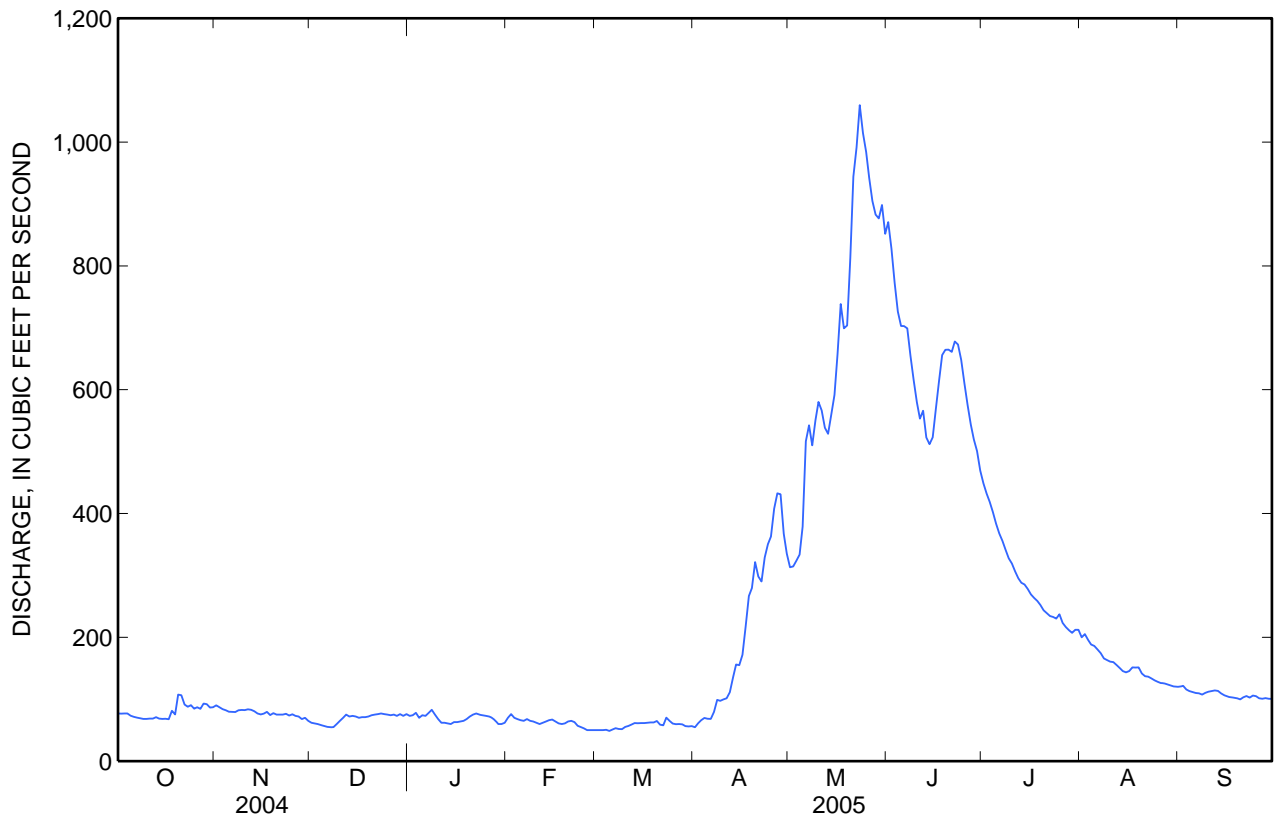
STATISTICS OF MONTHLY MEAN DATA FOR WATER YEARS 1943 - 2005, BY WATER YEAR (WY)

	Oct	Nov	Dec	Jan	Feb	Mar	Apr	May	Jun	Jul	Aug	Sep
Mean	89.9	77.7	68.8	63.5	60.7	62.6	160	533	617	289	150	107
Max	156	113	88.4	85.0	82.8	99.4	385	1,072	1,377	602	242	166
(WY)	(1987)	(1986)	(1983)	(1983)	(1984)	(1986)	(1946)	(1997)	(1986)	(1975)	(1983)	(1986)
Min	51.0	50.7	41.5	40.1	34.7	39.5	58.6	99.1	96.2	61.4	55.1	52.1
(WY)	(1978)	(1978)	(2002)	(1988)	(2003)	(1988)	(1975)	(1977)	(1977)	(1977)	(1977)	(1977)

10032000 SMITHS FORK NEAR BORDER, WY—Continued

SUMMARY STATISTICS

	Calendar Year 2004		Water Year 2005		Water Years 1943 - 2005	
Annual total	47,043		75,817			
Annual mean	129		208		190	
Highest annual mean					324	1986
Lowest annual mean					71.1	1977
Highest daily mean	436	Jun 10	1,060	May 23	2,000	Jun 4, 1986
Lowest daily mean	42	Mar 7	49	Mar 5	30	Feb 13, 2003
Annual seven-day minimum	46	Mar 3	50	Feb 27	31	Feb 11, 2003
Annual runoff (ac-ft)	93,310		150,400		138,000	
10 percent exceeds	270		580		503	
50 percent exceeds	88		90		90	
90 percent exceeds	56		60		58	



10038000 BEAR RIVER BELOW SMITHS FORK, NEAR COKEVILLE, WY

Bear River Basin

LOCATION.--Lat 42°07'36", long 110°58'21" referenced to North American Datum of 1927, in NW ¼ SE ¼ NE ¼ sec.28, T.25 N., R.119 W., Lincoln County, Hydrologic Unit 16010102, on left bank 1.1 mi upstream from Wyman Dam, 2.8 mi northwest of Cokeville, and 3.8 mi downstream from Smiths Fork.

DRAINAGE AREA.—2,447 mi².

WATER-DISCHARGE RECORDS

REVISED RECORDS.--WDR UT-74-1: Drainage area.

PERIOD OF RECORD.--April 1954 to current year (October 1996 to September 1998 seasonal).

GAGE.--Water-stage recorder. Elevation of gage is 6,140 ft above NGVD of 1929, from river-profile map.

REMARKS.--Records good except for estimated daily discharges, which are fair. Natural flow of stream affected by diversion for irrigation, return flow from irrigated areas, and regulation by upstream reservoirs.

EXTREMES FOR PERIOD OF RECORD.--Maximum discharge, 5,620 ft³/s, Jun 7, 1983, gage height, 8.75 ft; minimum, 31 ft³/s, Oct 4, 5, 6, 1977, Nov 7, 2002.

EXTREMES FOR CURRENT YEAR.--Maximum discharge, 1,760 ft³/s, May 25, gage height, 5.52 ft; minimum daily discharge, 70 ft³/s, Oct 15, 16, 17.

10038000 BEAR RIVER BELOW SMITHS FORK, NEAR COKEVILLE, WY—Continued

DISCHARGE, CUBIC FEET PER SECOND
WATER YEAR OCTOBER 2004 TO SEPTEMBER 2005
DAILY MEAN VALUES

[e, estimated]

Day	Oct	Nov	Dec	Jan	Feb	Mar	Apr	May	Jun	Jul	Aug	Sep
1	99	114	e108	e110	e105	e110	646	1,290	1,560	1,510	252	155
2	79	117	e106	e110	e100	e115	650	1,200	1,630	1,550	256	149
3	76	131	e106	e110	e115	e120	668	1,120	1,550	1,530	258	148
4	75	132	e104	e105	e110	e120	736	1,060	1,480	1,480	261	145
5	71	126	e104	e100	e100	e120	773	1,010	1,420	1,420	253	146
6	73	122	e102	e110	e100	e125	e776	1,060	1,350	1,400	247	143
7	74	120	e102	e105	e100	e130	799	1,170	1,370	1,360	240	139
8	75	119	e100	e110	e103	e133	879	1,250	1,380	1,350	252	136
9	79	122	e120	e110	e105	e135	881	1,290	1,360	1,370	244	135
10	78	122	e125	e85	e105	e140	822	1,210	1,320	1,350	228	141
11	78	125	e130	e85	e108	e145	840	1,290	1,300	1,150	230	140
12	75	128	e140	e95	e108	e150	869	1,340	1,330	903	224	144
13	77	131	e145	e80	e110	e150	905	1,270	1,320	769	216	145
14	74	141	e140	e80	e110	e130	905	1,290	1,300	618	206	140
15	70	139	e140	e75	e100	e130	805	1,360	1,340	541	201	140
16	70	134	e135	e80	e90	e145	699	1,410	1,430	479	193	144
17	70	141	e110	e95	e80	e160	666	1,530	1,500	440	203	142
18	92	141	e100	e110	e80	e175	683	1,520	1,530	420	200	147
19	97	138	e110	e110	e95	e200	665	1,430	1,530	391	208	147
20	113	159	e110	e115	e100	e210	681	1,360	1,500	362	197	145
21	134	166	e95	e105	e105	e220	607	1,420	1,460	338	191	142
22	114	158	e100	e110	e105	e230	540	1,540	1,490	319	190	138
23	101	154	e110	e110	e100	242	505	1,580	1,520	299	197	136
24	102	144	e90	e105	e110	263	580	1,640	1,480	288	186	137
25	103	170	e90	e100	e130	282	626	1,710	1,470	281	182	137
26	106	147	e90	e100	e100	294	736	1,680	1,460	251	176	131
27	109	115	e90	e100	e105	293	888	1,600	1,450	240	169	129
28	111	113	e110	e115	e108	335	922	1,460	1,460	246	165	128
29	121	e110	e115	e115	---	399	1,080	1,380	1,470	245	159	123
30	117	e108	e115	e115	---	549	1,170	1,470	1,430	248	151	123
31	118	---	e115	e110	---	658	---	1,480	---	266	151	---
Total	2,831	3,987	3,457	3,165	2,887	6,608	23,002	42,420	43,190	23,414	6,486	4,195
Mean	91.3	133	112	102	103	213	767	1,368	1,440	755	209	140
Max	134	170	145	115	130	658	1,170	1,710	1,630	1,550	261	155
Min	70	108	90	75	80	110	505	1,010	1,300	240	151	123
Ac-ft	5,620	7,910	6,860	6,280	5,730	13,110	45,620	84,140	85,670	46,440	12,860	8,320

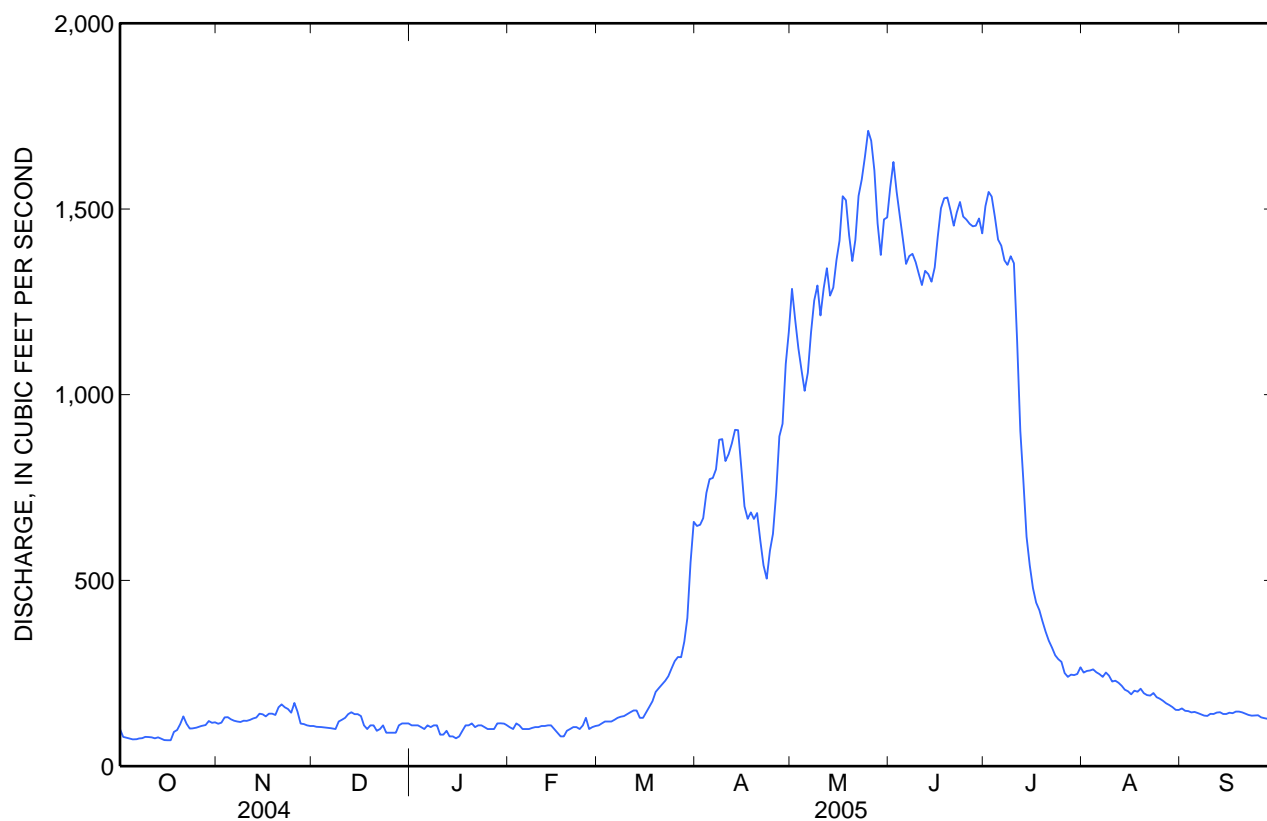
STATISTICS OF MONTHLY MEAN DATA FOR WATER YEARS 1955 - 2005, BY WATER YEAR (WY)

	Oct	Nov	Dec	Jan	Feb	Mar	Apr	May	Jun	Jul	Aug	Sep
Mean	214	224	197	179	202	352	656	952	1,181	563	232	197
Max	755	692	536	344	429	1,159	1,945	2,794	3,712	1,556	707	658
(WY)	(1983)	(1983)	(1983)	(1984)	(1986)	(1986)	(1985)	(1984)	(1983)	(1983)	(1983)	(1983)
Min	55.6	83.1	96.5	82.3	82.4	116	69.2	115	96.7	71.4	80.1	55.9
(WY)	(1978)	(1978)	(1978)	(2004)	(1993)	(1988)	(1977)	(1977)	(1977)	(1977)	(1977)	(1977)

10038000 BEAR RIVER BELOW SMITHS FORK, NEAR COKEVILLE, WY—Continued

SUMMARY STATISTICS

	Calendar Year 2004		Water Year 2005		Water Years 1955 - 2005	
Annual total	53,702		165,642			
Annual mean	147		454		427	
Highest annual mean					1,049	1984
Lowest annual mean					112	1977
Highest daily mean	404	Jun 11	1,710	May 25	5,400	Jun 7, 1983
Lowest daily mean	67	Jan 7	70	Oct 15	31	Oct 5, 1977
Annual seven-day minimum	72	Jan 7	73	Oct 11	36	Oct 1, 1977
Annual runoff (ac-ft)	106,500		328,600		309,400	
10 percent exceeds	252		1,420		1,050	
50 percent exceeds	122		145		216	
90 percent exceeds	83		100		105	



10038000 BEAR RIVER BELOW SMITHS FORK, NEAR COKEVILLE, WY—Continued

WATER-QUALITY RECORDS

PERIOD OF RECORD.--October 1992 to current year.

PERIOD OF DAILY RECORD.--

WATER TEMPERATURE: November 13, 1998 to September 30, 2001.

EXTREMES FOR PERIOD OF DAILY RECORD.--

WATER TEMPERATURE: Maximum recorded, 23.3°C, July 4-6, 2001; minimum recorded, 0.0°C, on many days during the winter period.

WATER-QUALITY DATA, WATER YEAR OCTOBER 2004 TO SEPTEMBER 2005

Date	Time	Instantaneous discharge, cfs (00061)	Barometric pressure, mm Hg (00025)	Dissolved oxygen, mg/L (00300)	Dissolved oxygen, percent of saturation (00301)	pH, water, unfltrd std units (00400)	Specific conductance, wat unfltrd uS/cm 25 degC (00095)	Temperature, air, deg C (00020)	Temperature, water, deg C (00010)	Ammonia water, fltrd, mg/L as N (00608)	Nitrite + nitrate water fltrd, mg/L as N (00631)	Nitrite water, fltrd, mg/L as N (00613)	Orthophosphate, water, fltrd, mg/L as P (00671)
NOV													
10...	1245	101	608	12.5	123	8.4	565	7.5	5.0	<.04	E.04	<.008	<.02
MAR													
21...	1450	180	605	11.2	109	8.2	517	8.0	4.5	.09	.11	<.008	<.02
JUN													
28...	1525	1,500	607	8.0	103	8.0	508	22.0	16.5	<.04	E.03	<.008	<.02
AUG													
03...	1650	266	605	12.5	176	8.6	527	27.0	20.5	<.04	<.06	<.008	<.02

Date	E coli, modif. m-TEC, water, col/ 100 mL (90902)	Fecal coli-form, M-FC 0.7u MF col/ 100 mL (31625)	Suspended sediment concentration, mg/L (80154)	Suspended sediment discharge, tons/d (80155)
NOV				
10...	E10	E15	23	6.3
MAR				
21...	<1	E1	38	18
JUN				
28...	25	50	5,230	21,200
AUG				
03...	30	28	60	43

< -- Less than.

E-- Estimated value; for bacteria, estimated values are counts outside the acceptable range (non-ideal colony count).



Water-Data Report UT-2005

10039500 BEAR RIVER AT BORDER, WY

Bear River Basin

LOCATION.--Lat 42°12'40", long 111°03'11" referenced to North American Datum of 1927, in NE ¼ NE ¼ NE ¼ sec.15, T.14 S., R.46 E., Bear Lake County, Hydrologic Unit 16010102, on left bank 0.2 mi west of Wyoming-Idaho State line, 0.5 mi west of Border, and 2.1 mi upstream from Thomas Fork.

DRAINAGE AREA.--2,480 mi².

WATER-DISCHARGE RECORDS

REVISED RECORDS.--WDR UT-74-1: Drainage area.

PERIOD OF RECORD.--October 1937 to September 1996, October 1996 to September 2000 (seasonal), October 2000 to current year.

GAGE.--Water-stage recorder. Datum of gage is 6,051.63 ft above NGVD of 1929, unadjusted.

REMARKS.--Records good except for estimated daily discharges, which are poor. Natural flow of stream affected by regulation of upstream reservoirs, diversions for irrigation, and return flow from irrigated areas.

EXTREMES FOR PERIOD OF RECORD.--Maximum discharge, 4,880 ft³/s, Jun 7, 1983, gage height, 9.69 ft; minimum discharge, 24 ft³/s, Apr 29, 30, 1977.

EXTREMES FOR CURRENT YEAR.--Maximum discharge, 1,400 ft³/s, May 18, gage height 6.05 feet; minimum discharge, 51 ft³/s, Oct. 4, 5, 6, 7, 8.

10039500 BEAR RIVER AT BORDER, WY—Continued

**DISCHARGE, CUBIC FEET PER SECOND
WATER YEAR OCTOBER 2004 TO SEPTEMBER 2005
DAILY MEAN VALUES**

[e, estimated]

Day	Oct	Nov	Dec	Jan	Feb	Mar	Apr	May	Jun	Jul	Aug	Sep
1	67	125	e108	e110	e105	e110	705	1,170	1,230	1,160	211	135
2	61	122	e106	e110	e100	e115	707	1,120	1,320	1,190	209	129
3	53	128	e106	e110	e115	e120	698	1,040	1,260	1,210	215	120
4	52	133	e104	e105	e110	e120	782	984	1,200	1,160	217	119
5	52	130	e104	e100	e100	e120	838	946	1,140	1,110	211	117
6	52	125	e102	e110	e100	e125	853	963	1,090	1,090	209	118
7	52	122	e102	e105	e100	e130	884	1,050	1,110	1,070	204	116
8	52	120	e100	e110	e103	e133	962	1,150	1,140	1,040	210	114
9	53	121	e120	e110	e105	e135	1,000	1,180	1,100	1,060	214	115
10	55	122	e125	e85	e105	e140	942	1,110	1,050	1,060	208	115
11	55	124	e130	e85	e108	e145	929	1,160	1,020	972	204	116
12	54	127	e140	e95	e108	e150	933	1,220	1,060	809	205	119
13	54	126	e145	e80	e110	e150	947	1,180	1,080	713	200	122
14	56	136	e140	e80	e110	e130	950	1,140	1,040	604	193	120
15	55	135	e140	e75	e100	e130	884	1,190	1,050	520	191	118
16	54	136	e135	e80	e90	e145	796	1,220	1,100	458	186	121
17	53	133	e110	e95	e80	e160	714	1,320	1,160	399	193	118
18	64	136	e100	e110	e80	e175	719	1,380	1,170	381	193	121
19	74	e120	e110	e110	e95	e200	715	1,290	1,180	360	198	123
20	81	e130	e110	e115	e100	e210	726	1,200	1,150	337	193	122
21	136	e140	e95	e105	e105	e220	683	1,200	1,110	326	187	120
22	131	e150	e100	e110	e105	e230	622	1,290	1,140	303	177	116
23	120	e150	e110	e110	e100	e242	572	1,310	1,170	283	180	114
24	118	e140	e90	e105	e110	e263	610	1,340	1,140	265	175	112
25	117	e140	e90	e100	e130	e282	667	1,380	1,130	255	166	112
26	119	e140	e90	e100	e100	e294	716	1,340	1,120	246	151	110
27	120	e120	e90	e100	e105	e293	852	1,290	1,110	228	147	108
28	123	e113	e110	e115	e108	e335	902	1,190	1,110	226	145	105
29	127	e110	e115	e115	---	e399	1,020	1,100	1,140	225	141	104
30	128	e108	e115	e115	---	e549	1,090	1,170	1,120	216	134	103
31	126	---	e115	e110	---	662	---	1,210	---	212	130	---
Total	2,514	3,862	3,457	3,165	2,887	6,612	24,418	36,833	33,940	19,488	5,797	3,502
Mean	81.1	129	112	102	103	213	814	1,188	1,131	629	187	117
Max	136	150	145	115	130	662	1,090	1,380	1,320	1,210	217	135
Min	52	108	90	75	80	110	572	946	1,020	212	130	103
Ac-ft	4,990	7,660	6,860	6,280	5,730	13,110	48,430	73,060	67,320	38,650	11,500	6,950

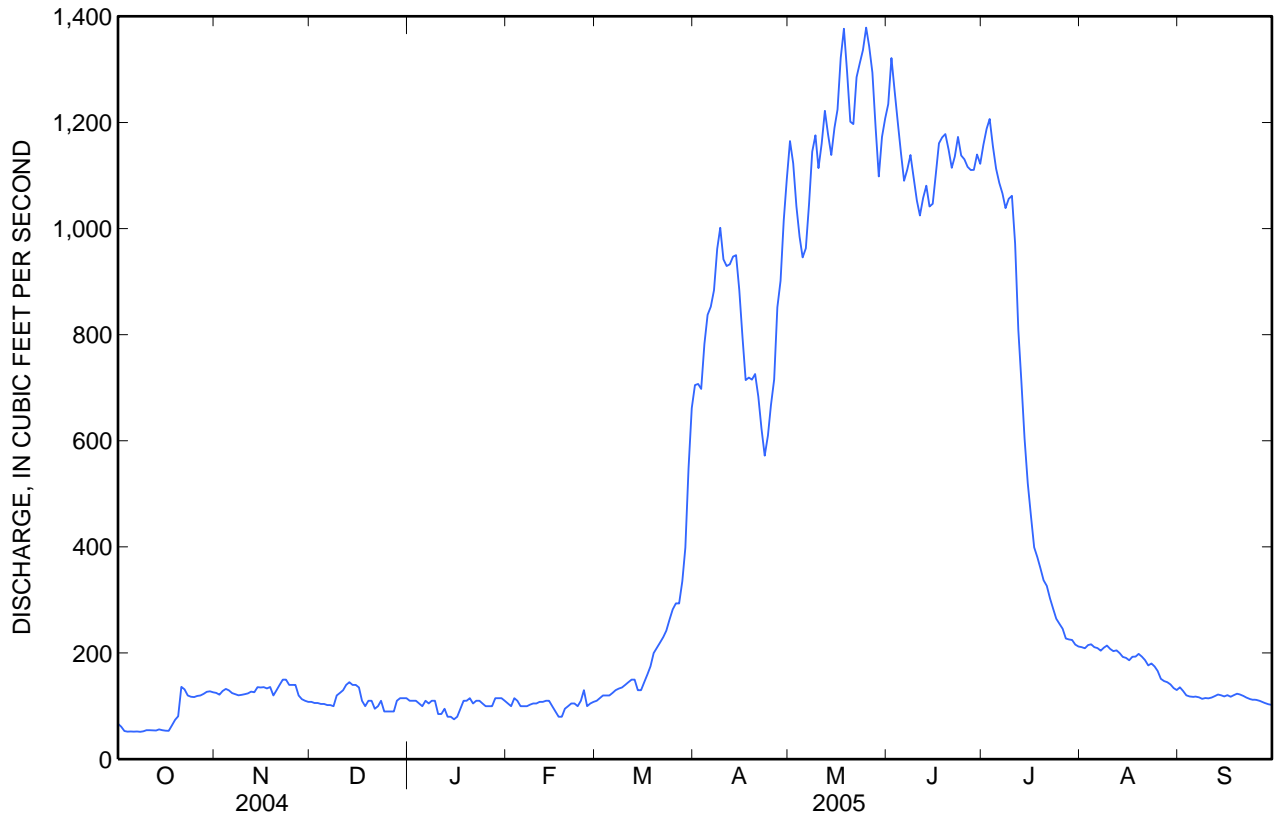
STATISTICS OF MONTHLY MEAN DATA FOR WATER YEARS 1938 - 2005, BY WATER YEAR (WY)

	Oct	Nov	Dec	Jan	Feb	Mar	Apr	May	Jun	Jul	Aug	Sep
Mean	204	221	193	178	202	370	727	996	1,137	522	222	175
Max	751	693	563	381	479	1,294	1,979	3,158	3,829	1,670	752	671
(WY)	(1983)	(1983)	(1983)	(1985)	(1986)	(1986)	(1985)	(1952)	(1983)	(1983)	(1983)	(1983)
Min	43.5	74.6	97.2	77.6	75.2	105	71.2	74.4	62.2	54.2	42.3	38.5
(WY)	(2002)	(2002)	(2002)	(1993)	(1993)	(1988)	(1977)	(1977)	(1977)	(1977)	(1940)	(1940)

10039500 BEAR RIVER AT BORDER, WY—Continued

SUMMARY STATISTICS

	Calendar Year 2004		Water Year 2005		Water Years 1938 - 2005	
Annual total	48,232		146,475			
Annual mean	132		401		418	
Highest annual mean					1,068	1983
Lowest annual mean					103	2002
Highest daily mean	422	Jun 11	1,380	May 18	4,840	Jun 8, 1983
Lowest daily mean	52	Sep 11	52	Oct 4	25	Apr 29, 1977
Annual seven-day minimum	52	Oct 3	52	Oct 3	29	Apr 28, 1977
Annual runoff (ac-ft)	95,670		290,500		302,900	
10 percent exceeds	230		1,140		1,080	
50 percent exceeds	119		136		214	
90 percent exceeds	66		95		102	



10046000 RAINBOW INLET CANAL NEAR DINGLE, ID

Bear River Basin

LOCATION.--Lat 42°13'48", long 111°17'43" referenced to North American Datum of 1927, in NW ¼ SW ¼ SE ¼ sec.3, T.14 S., R.44 E., BEAR LAKE County, Hydrologic Unit 16010201, on right bank 1.5 mi west of Dingle and 1.8 mi downstream from headworks at Stewart Dam.

WATER-DISCHARGE RECORDS

PERIOD OF RECORD.--January 1922 to current year. Monthly discharge only prior to October 1945, published in WSP 1314.

GAGE.--Water-stage recorder. Elevation of gage datum is 5,922.0 ft above NGVD of 1929, (by topographic survey). Prior to October 1, 1923, at site 300 ft downstream at different datum; October 1, 1923 to October 27, 1944, at site 0.5 mi downstream at different datum.

COOPERATION.--Records collected by PacifiCorp, under general supervision of Geological Survey, in connection with a Federal Energy Regulatory Commission project.

REMARKS.--Records fair except for estimated daily discharges, which are poor. Canal diverts from Bear River at Stewart Dam in NE¼ sec. 34, T.013 S., R.044 E., for storage in Bear Lake. At times flow in canal is augmented by surplus water from Black Otter Slough entering at the station and by seepage and surplus water from irrigation.

AVERAGE DISCHARGE FOR PERIOD OF RECORD.--83 years, 358 ft³/s, 259,900 acre-ft/yr.

EXTREMES FOR PERIOD OF RECORD.--Maximum daily discharge, 4,950 ft³/s, May 27, 1984; no flow Apr 28, 1977 and Oct 1, 1979.

10046000 RAINBOW INLET CANAL NEAR DINGLE, ID—Continued

DISCHARGE, CUBIC FEET PER SECOND
WATER YEAR OCTOBER 2004 TO SEPTEMBER 2005
DAILY MEAN VALUES

Day	Oct	Nov	Dec	Jan	Feb	Mar	Apr	May	Jun	Jul	Aug	Sep
1	83	104	104	100	100	100	605	1,290	1,360	1,220	166	125
2	83	104	104	100	100	100	665	1,360	1,420	1,220	166	100
3	83	104	104	100	100	100	689	1,310	1,560	1,270	166	100
4	83	104	104	100	100	100	720	1,190	1,570	1,440	150	100
5	85	104	104	100	100	100	790	1,100	1,500	1,410	150	90
6	85	104	104	100	100	100	855	1,090	1,370	1,410	150	90
7	90	104	104	100	100	100	925	1,170	1,300	1,390	150	90
8	90	104	104	100	100	100	1,010	1,380	1,350	1,360	140	90
9	61	104	104	100	100	100	1,080	1,510	1,390	1,320	135	90
10	61	104	104	100	100	100	1,080	1,570	1,310	1,320	138	90
11	61	104	104	100	100	136	1,010	1,570	1,310	1,300	140	86
12	61	104	104	100	100	136	964	1,650	1,300	1,230	140	86
13	61	104	104	100	100	136	957	1,770	1,300	983	140	86
14	61	104	123	100	100	136	917	1,730	1,310	812	140	80
15	61	104	123	100	100	136	970	1,650	1,280	670	135	80
16	61	104	123	100	100	136	910	1,720	1,260	556	135	70
17	61	104	123	100	100	136	838	1,760	1,290	421	135	70
18	61	104	123	100	100	136	769	1,890	1,300	402	150	70
19	61	104	123	100	100	136	769	2,020	1,330	376	150	70
20	61	104	123	100	100	136	797	1,940	1,370	362	150	70
21	75	104	123	100	100	160	797	1,670	1,350	310	125	70
22	75	104	123	100	100	180	763	1,570	1,320	316	125	62
23	80	104	123	100	100	250	629	1,660	1,320	287	115	60
24	80	104	100	100	100	260	608	1,740	1,350	264	110	60
25	80	104	100	100	100	265	633	1,740	1,290	234	110	60
26	80	104	100	100	100	270	701	1,680	1,250	214	110	60
27	80	104	100	100	100	275	767	1,590	1,190	204	123	60
28	80	104	100	100	100	286	960	1,460	1,180	188	141	60
29	114	104	100	100	---	280	1,130	1,300	1,190	182	152	60
30	114	104	100	100	---	300	1,230	1,240	1,220	175	152	60
31	104	---	100	100	---	501	---	1,300	---	172	125	---
Total	2,376	3,120	3,382	3,100	2,800	5,387	25,538	47,620	39,840	23,018	4,314	2,345
Mean	76.6	104	109	100	100	174	851	1,536	1,328	743	139	78.2
Max	114	104	123	100	100	501	1,230	2,020	1,570	1,440	166	125
Min	61	104	100	100	100	100	605	1,090	1,180	172	110	60
Ac-ft	4,710	6,190	6,710	6,150	5,550	10,690	50,650	94,450	79,020	45,660	8,560	4,650

	Calendar Year 2004	Water Year 2005
Total	29,977.0	162,840
Mean	81.9	446
Max	286	2,020
Min	3.0	60
Ac-ft	59,460	323,000

10055500 BEAR LAKE AT LIFTON, NEAR ST. CHARLES, ID

Bear River Basin

LOCATION.--Lat 42°07'16", long 111°18'52" referenced to North American Datum of 1927, in NE ¼ sec.16, T.15 S., R.44 E., Bear Lake County, Hydrologic Unit 16010201, in Lifton pumping plant of Utah Power & Light Co., 3.5 mi east of St. Charles.

DRAINAGE AREA.--434 mi².

RESERVOIR-CONTENTS RECORDS

PERIOD OF RECORD.--October 1903 to June 1906, elevations only, published as "at Fish Haven," January 1921 to current year. Monthly contents only January 1921 to September 1945, published in WSP 1314.

GAGE.--Water-stage recorder. Elevation of gage is 5,900 ft, PacifiCorp datum.

COOPERATION.--Records provided by PacifiCorp, under general supervision of Geological Survey, in connection with a Federal Energy Regulatory Commission project.

REMARKS.--Outflow regulated by gates and pumps at the north end of Bear Lake and by gates in dike at north end of Mud Lake, a shallow interconnected lake. Principal inflow to Bear Lake is from Bear River through Rainbow Inlet Canal (station 10046000) and Dingle Inlet Canals into Mud Lake, from which the inflow can enter into Bear Lake either through the pumping plant or an opening in the dividing causeway. The inflow can be routed directly into the Outlet Canal (station 10059500). Usable capacity of Bear Lake is 1,421,000 acre-ft between elevation 5,902.00 ft, lower limit of pumps, and 5,923.65 ft, upper limit of storage with existing facilities. Water is used for irrigation and power development. Figures herein given represent usable contents.

EXTREMES FOR PERIOD OF RECORD.--Maximum contents, 1,423,000 acre-ft, Jun 10, 1923, elevation, 5,923.68 ft; no usable contents Nov 9-19, 1935.

EXTREMES FOR CURRENT YEAR.--Maximum contents, 472,000 acre-ft Jul 9-14, elevation 5909.69 ft; minimum contents, 65,000 acre-ft Oct 15-20, elevation 5903.09 ft.

10055500 BEAR LAKE AT LIFTON, NEAR ST. CHARLES, ID—Continued

RESERVOIR STORAGE, THOUSAND ACRE FEET
WATER YEAR OCTOBER 2004 TO SEPTEMBER 2005
DAILY INSTANTANEOUS VALUES

Day	Oct	Nov	Dec	Jan	Feb	Mar	Apr	May	Jun	Jul	Aug	Sep
1	70	74	90	96	123	137	157	246	370	458	441	385
2	69	74	90	97	123	138	159	250	373	460	439	383
3	69	74	90	97	124	138	162	253	376	462	438	382
4	69	74	90	97	124	139	165	257	380	463	437	380
5	68	74	90	97	125	140	167	259	383	465	435	377
6	68	74	90	98	125	140	171	262	387	467	434	376
7	68	74	90	98	126	141	175	264	394	469	433	375
8	67	75	91	99	126	141	178	268	400	471	432	374
9	68	75	91	100	127	142	183	272	404	472	430	373
10	68	75	91	101	128	143	186	276	407	472	428	373
11	67	76	91	102	128	143	189	282	411	472	427	372
12	66	77	91	103	129	143	192	290	414	472	425	371
13	66	78	91	105	129	143	195	295	417	472	423	370
14	66	79	92	105	130	144	198	299	420	472	421	368
15	65	80	92	105	131	144	200	303	422	471	419	365
16	65	81	93	106	131	145	201	306	425	471	416	363
17	65	82	93	106	131	146	203	310	427	470	414	360
18	65	83	93	107	132	146	204	314	430	469	412	358
19	65	84	93	108	132	146	205	318	432	468	409	358
20	65	84	94	109	133	146	208	322	435	467	406	358
21	66	85	94	111	133	147	210	326	437	465	404	358
22	68	86	94	112	134	147	212	330	441	462	402	358
23	68	87	94	113	134	148	214	334	444	460	400	358
24	69	87	95	115	134	149	216	337	447	458	399	358
25	69	88	95	116	135	149	219	341	450	455	398	357
26	71	88	95	117	135	150	222	344	452	452	397	356
27	72	88	95	118	136	151	225	348	454	449	395	355
28	73	89	95	120	137	152	228	353	455	447	394	354
29	74	89	96	120	---	153	235	357	456	444	392	353
30	74	90	96	121	---	153	241	363	457	443	390	353
31	74	---	96	122	---	156	---	366	---	442	388	---
Max	74	90	96	122	137	156	241	366	457	472	441	385
Min	65	74	90	96	123	137	157	246	370	442	388	353
(#)	5,903.24	5,903.51	5,903.62	5,904.05	5,904.29	5,904.61	5,906.00	5,908.01	5,909.45	5,909.21	5,908.36	5,907.80
(*)	+4	+16	+6	+26	+15	+19	+85	+125	+91	-15	-54	-35

CAL YR 2004.....(*) -39

WTR YR 2005.....(*) +283

(#) Elevation, in feet, at end of month

(*) Change in contents, in thousands of acre-feet

10059500 BEAR LAKE OUTLET CANAL NEAR PARIS, ID

Bear River Basin

LOCATION.--Lat 42°13'00", long 111°20'35" referenced to North American Datum of 1927, in SW ¼ NW ¼ SW ¼ sec.8, T.14 S., R.44 E., BEAR LAKE County, Hydrologic Unit 16010201, on right bank 2,000 ft downstream from headgates (at dike) and 3 mi southeast of Paris.

WATER-DISCHARGE RECORDS

PERIOD OF RECORD.--January 1922 to current year. Monthly discharge only January 1922 to September 1945, published in WSP 1314.

GAGE.--Water-stage recorder. Datum of gage is 5,912.6 ft above NGVD of 1929, unadjusted.

COOPERATION.--Records collected by PacifiCorp, under general supervision of Geological Survey, in connection with a Federal Energy Regulatory Commission project.

REMARKS.--Records good except for estimated daily discharges, which are fair. Flow regulated by Bear Lake (station 10055500).

AVERAGE DISCHARGE FOR PERIOD OF RECORD.--83 years, 410 ft³/s, 296,800 acre-ft/yr.

EXTREMES FOR PERIOD OF RECORD.--Maximum daily discharge, 3,080 ft³/s, Jun 19-21, 1986; minimum daily discharge, 1.0 ft³/s, for many days in 1937, 1954, 1959, 1961, 1964, 1977-78.

10059500 BEAR LAKE OUTLET CANAL NEAR PARIS, ID—Continued

DISCHARGE, CUBIC FEET PER SECOND
WATER YEAR OCTOBER 2004 TO SEPTEMBER 2005
DAILY MEAN VALUES

[e, estimated]

Day	Oct	Nov	Dec	Jan	Feb	Mar	Apr	May	Jun	Jul	Aug	Sep
1	e5.0	e5.0	e5.0	e5.0	e5.0	e5.0	e5.0	e5.0	e5.0	190	670	476
2	e5.0	e5.0	e5.0	e5.0	e5.0	e5.0	e5.0	e5.0	e5.0	233	665	336
3	e5.0	e5.0	e5.0	e5.0	e5.0	e5.0	e5.0	e5.0	e5.0	220	632	375
4	e5.0	e5.0	e5.0	e5.0	e5.0	e5.0	e5.0	e5.0	e5.0	217	497	373
5	e5.0	e5.0	e5.0	e5.0	e5.0	e5.0	e5.0	e5.0	e5.0	259	495	371
6	e5.0	e5.0	e5.0	e5.0	e5.0	e5.0	e5.0	e5.0	e5.0	466	496	370
7	e5.0	e5.0	e5.0	e5.0	e5.0	e5.0	e5.0	e5.0	e5.0	573	497	370
8	e5.0	e5.0	e5.0	e5.0	e5.0	e5.0	e5.0	e5.0	e5.0	718	497	369
9	e5.0	e5.0	e5.0	e5.0	e5.0	e5.0	e5.0	e5.0	e5.0	737	565	366
10	e5.0	e5.0	e5.0	e5.0	e5.0	e5.0	e5.0	e5.0	e5.0	751	750	370
11	e5.0	e5.0	e5.0	e5.0	e5.0	e5.0	e5.0	e5.0	e5.0	785	780	371
12	e5.0	e5.0	e5.0	e5.0	e5.0	e5.0	e5.0	e5.0	e5.0	883	812	360
13	e5.0	e5.0	e5.0	e5.0	e5.0	e5.0	e5.0	e5.0	e5.0	897	808	164
14	e5.0	e5.0	e5.0	e5.0	e5.0	e5.0	e5.0	e5.0	e5.0	887	807	47
15	e5.0	e5.0	e5.0	e5.0	e5.0	e5.0	e5.0	e5.0	e5.0	819	852	40
16	e5.0	e5.0	e5.0	e5.0	e5.0	e5.0	e5.0	e5.0	e5.0	805	1,000	38
17	e5.0	e5.0	e5.0	e5.0	e5.0	e5.0	e5.0	e5.0	e5.0	839	985	38
18	e5.0	e5.0	e5.0	e5.0	e5.0	e5.0	e5.0	e5.0	e5.0	931	730	37
19	e5.0	e5.0	e5.0	e5.0	e5.0	e5.0	e5.0	e5.0	e5.0	1,020	717	35
20	e5.0	e5.0	e5.0	e5.0	e5.0	e5.0	e5.0	e5.0	e5.0	1,040	713	32
21	e5.0	e5.0	e5.0	e5.0	e5.0	e5.0	e5.0	e5.0	e5.0	1,060	707	32
22	e5.0	e5.0	e5.0	e5.0	e5.0	e5.0	e5.0	e5.0	e5.0	1,150	700	30
23	e5.0	e5.0	e5.0	e5.0	e5.0	e5.0	e5.0	e5.0	e5.0	1,150	684	30
24	e5.0	e5.0	e5.0	e5.0	e5.0	e5.0	e5.0	e5.0	e5.0	1,140	495	34
25	e5.0	e5.0	e5.0	e5.0	e5.0	e5.0	e5.0	e5.0	103	1,120	486	31
26	e5.0	e5.0	e5.0	e5.0	e5.0	e5.0	e5.0	e5.0	215	1,070	484	e5.0
27	e5.0	e5.0	e5.0	e5.0	e5.0	e5.0	e5.0	e5.0	281	1,080	488	e5.0
28	e5.0	e5.0	e5.0	e5.0	e5.0	e5.0	e5.0	e5.0	500	1,060	510	e5.0
29	e5.0	e5.0	e5.0	e5.0	---	e5.0	e5.0	e5.0	514	935	510	e5.0
30	e5.0	e5.0	e5.0	e5.0	---	e5.0	e5.0	e5.0	510	754	517	e5.0
31	e5.0	---	e5.0	e5.0	---	e5.0	---	e5.0	---	735	517	---
Total	155.0	150.0	155.0	155.0	140.0	155.0	150.0	155.0	2,243.0	24,524	20,066	5,120.0
Mean	5.00	5.00	5.00	5.00	5.00	5.00	5.00	5.00	74.8	791	647	171
Max	5.0	5.0	5.0	5.0	5.0	5.0	5.0	5.0	514	1,150	1,000	476
Min	5.0	5.0	5.0	5.0	5.0	5.0	5.0	5.0	5.0	190	484	5.0
Ac-ft	307	298	307	307	278	307	298	307	4,450	48,640	39,800	10,160

	Calendar Year 2004	Water Year 2005
Total	51,059.0	53,168.0
Mean	140	146
Max	806	1,150
Min	5.0	5.0
Ac-ft	101,300	105,500

10068500 BEAR RIVER AT PESCADERO, ID

Bear River Basin

LOCATION.--Lat 42°24'06", long 111°21'22" referenced to North American Datum of 1927, in SW ¼ SW ¼ SE ¼ sec.6, T.12 S., R.44 E., Bear Lake County, Hydrologic Unit 16010201, on left bank at Pescadero, 400 ft downstream from road bridge, 2 mi downstream from Bennington Creek, and 6.5 mi northwest of Montpelier.

DRAINAGE AREA.--3,705 mi².

WATER-DISCHARGE RECORDS

PERIOD OF RECORD.--October 1921 to September 1954, June 1969 to current year. Monthly discharge only for some periods, published in WSP 1314.

GAGE.--Water-stage recorded. Elevation of gage is 5,900 ft above NGVD of 1929, from topographic map. Prior to October 1, 1988 at datum 0.35 ft lower.

REMARKS.--Records good except for estimated daily discharges, which are poor. Flow regulated by Bear Lake (station 10055500) and diversions above station for irrigation.

EXTREMES FOR PERIOD OF RECORD.--Maximum daily discharge, 4,280 ft³/s, Jun 21, 1986; minimum daily, 23 ft³/s, Mar 14-17, 1936.

EXTREMES FOR CURRENT YEAR.--Maximum discharge, 1,260 ft³/s, Jul 22, gage height, 5.18 ft; minimum daily discharge, 28 ft³/s, Oct 6-10, 14-15.

10068500 BEAR RIVER AT PESCADERO, ID—Continued

DISCHARGE, CUBIC FEET PER SECOND
WATER YEAR OCTOBER 2004 TO SEPTEMBER 2005
DAILY MEAN VALUES

[e, estimated]

Day	Oct	Nov	Dec	Jan	Feb	Mar	Apr	May	Jun	Jul	Aug	Sep
1	123	59	e60	e49	e43	e45	319	374	382	496	726	543
2	49	59	e59	e51	e42	e55	309	364	403	474	702	408
3	e38	67	e58	e50	e42	e55	342	351	472	478	691	404
4	e34	73	e55	e51	e43	e58	354	335	542	462	572	409
5	e30	77	e51	e50	e44	e58	377	321	517	511	536	405
6	e28	70	e47	e49	e46	e60	429	284	506	701	532	404
7	e28	69	e46	e49	e44	e61	498	288	523	764	529	401
8	e28	69	e47	e52	e43	e65	551	310	540	882	523	401
9	e28	70	e49	e54	e42	e68	569	320	527	907	540	400
10	e28	69	e49	e51	e43	e76	534	345	495	898	732	397
11	e34	70	e50	e48	e44	e85	483	400	462	907	775	399
12	e38	69	e52	e50	e45	e106	422	430	425	1,000	811	400
13	e34	68	e54	e50	e47	e113	368	451	393	1,020	815	294
14	e28	68	e53	e49	e46	e129	321	470	380	1,010	812	175
15	e28	67	e47	e48	e46	e132	295	466	362	976	831	125
16	e30	65	e46	e48	e47	e132	277	448	337	918	988	119
17	e40	65	e47	e47	e44	e137	265	434	311	900	1,030	119
18	e40	64	e49	e46	e44	e140	247	426	342	966	848	121
19	e39	e65	e51	e46	e43	e141	250	417	371	1,070	763	120
20	e44	e65	e52	e45	e46	e131	270	401	380	1,100	755	116
21	69	e65	e52	e45	e44	e130	289	380	369	1,110	751	115
22	68	e65	e52	e44	e46	e143	289	364	322	1,230	746	117
23	55	e66	e50	e44	e43	e145	278	351	306	1,260	739	116
24	55	e67	e48	e44	e44	e166	265	352	300	1,240	602	119
25	51	e65	e48	e44	e46	e195	266	334	291	1,220	532	121
26	50	e65	e47	e44	e46	e227	266	331	404	1,140	524	119
27	49	e64	e46	e44	e46	e242	273	319	457	1,120	523	90
28	52	e64	e47	e44	e45	e250	300	315	632	1,120	541	56
29	59	e61	e46	e45	---	e259	340	288	686	1,040	544	51
30	59	e61	e48	e46	---	e266	363	286	705	848	542	47
31	61	---	e47	e44	---	322	---	322	---	793	547	---
Total	1,397	1,991	1,553	1,471	1,244	4,192	10,409	11,277	13,142	28,561	21,102	7,111
Mean	45.1	66.4	50.1	47.5	44.4	135	347	364	438	921	681	237
Max	123	77	60	54	47	322	569	470	705	1,260	1,030	543
Min	28	59	46	44	42	45	247	284	291	462	523	47
Ac-ft	2,770	3,950	3,080	2,920	2,470	8,310	20,650	22,370	26,070	56,650	41,860	14,100

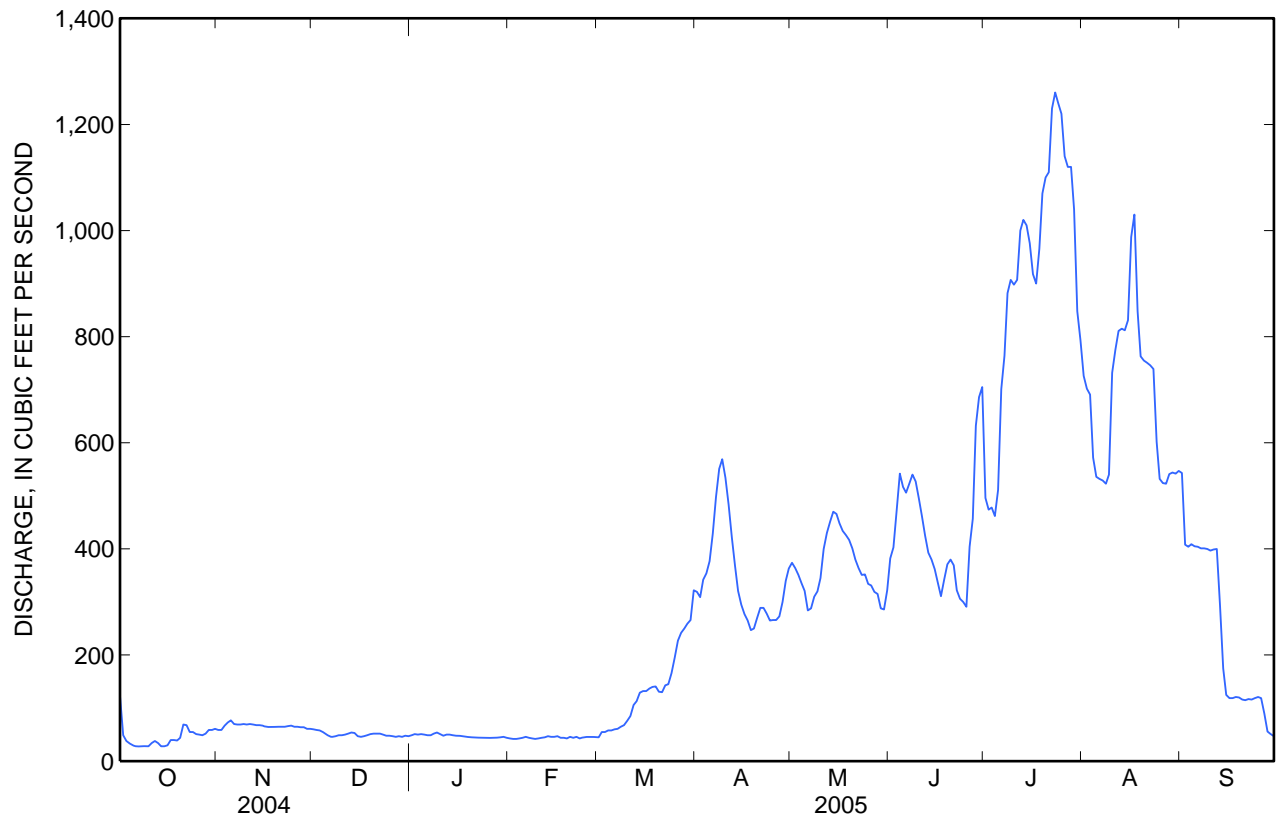
STATISTICS OF MONTHLY MEAN DATA FOR WATER YEARS 1923 - 2005, BY WATER YEAR (WY)

	Oct	Nov	Dec	Jan	Feb	Mar	Apr	May	Jun	Jul	Aug	Sep
Mean	444	454	457	417	376	387	424	558	930	1,185	1,009	649
Max	2,039	2,134	1,788	1,340	1,710	1,707	1,678	2,106	3,413	2,918	1,955	1,696
(WY)	(1984)	(1984)	(1985)	(1924)	(1985)	(1985)	(1986)	(1986)	(1986)	(1983)	(1983)	(1984)
Min	35.7	53.2	50.1	36.4	29.8	25.4	64.5	113	340	516	507	43.2
(WY)	(1978)	(2003)	(2005)	(1936)	(1936)	(1936)	(2003)	(2003)	(1932)	(1938)	(2004)	(1977)

10068500 BEAR RIVER AT PESCADERO, ID—Continued

SUMMARY STATISTICS

	Calendar Year 2004		Water Year 2005		Water Years 1923 - 2005	
Annual total	74,559		103,450			
Annual mean	204		283		611	
Highest annual mean					1,733	1984
Lowest annual mean					204	2004
Highest daily mean	926	Jul 1	1,260	Jul 23	4,280	Jun 21, 1986
Lowest daily mean	28	Sep 7	28	Oct 6	23	Mar 14, 1936
Annual seven-day minimum	28	Sep 7	29	Oct 4	23	Mar 11, 1936
Annual runoff (ac-ft)	147,900		205,200		442,500	
10 percent exceeds	712		748		1,330	
50 percent exceeds	74		131		486	
90 percent exceeds	45		44		70	





Water-Data Report UT-2005

10075000 BEAR RIVER AT SODA SPRINGS, ID

Bear River Basin

LOCATION.--Lat 42°36'50", long 111°34'58" referenced to North American Datum of 1927, in NW ¼ SW ¼ NW ¼ sec.29, T.9 S., R.42 E., Caribou County, Hydrologic Unit 16010201, on left bank 800 ft upstream from Bailey Creek road bridge and 2 mi south of Soda Springs.

DRAINAGE AREA.--3,970 mi².

WATER-DISCHARGE RECORDS

REVISED RECORDS.--WRD UT-74-1: Drainage area.

PERIOD OF RECORD.--May to September 1896, May, June 1898, and October 1953 to current year in reports of Geological Survey. Irrigation season only during 1944-49, 1951-53 in reports of Bear River Hydrometric Data (Geological Survey open-file report).

GAGE.--Water-stage recorder. Elevation of gage is 5,760 ft above NGVD of 1929, from topographic map. May 25 to October 2, 1896, May 22 to July 1, 1898, staff gage at different datum. During irrigation season 1944-49, 1950-53, water-stage recorder at site 800 ft downstream at different datum.

COOPERATION.--Records collected by PacifiCorp, under general supervision of Geological Survey, in connection with a Federal Energy Regulatory Commission project.

REMARKS.--Records fair except for estimated daily discharges, which are poor. Natural flow of stream affected by upstream reservoirs, diversions for irrigation, and return flow from irrigated areas.

AVERAGE DISCHARGE FOR PERIOD OF RECORD.--52 years, 696 ft³/s, 504,700 acre-ft/yr.

EXTREMES FOR PERIOD OF RECORD.--Maximum discharge, 6,380 ft³/s, Jun 9, 15, 1896, gage height, 8.40 ft, datum then in use; minimum daily discharge, 37 ft³/s, Sep 30, Oct, 1, 2, 2001.

10075000 BEAR RIVER AT SODA SPRINGS, ID—Continued

DISCHARGE, CUBIC FEET PER SECOND
WATER YEAR OCTOBER 2004 TO SEPTEMBER 2005
DAILY MEAN VALUES

[e, estimated]

Day	Oct	Nov	Dec	Jan	Feb	Mar	Apr	May	Jun	Jul	Aug	Sep
1	333	138	e133	e129	e116	e175	e415	619	753	850	834	637
2	189	129	e132	e129	e118	e181	437	609	833	637	767	618
3	112	130	e133	e128	e120	e182	481	581	824	622	750	485
4	99	135	e133	e129	e122	e191	569	570	895	618	718	490
5	92	141	e131	e128	e124	e192	599	597	927	597	604	492
6	86	149	e131	e128	e126	e195	639	576	902	677	585	485
7	83	141	e132	e128	e128	e193	719	583	911	851	583	481
8	80	138	e133	e127	e128	e192	843	652	944	925	586	481
9	78	138	e132	e127	e129	e195	873	644	927	1,040	585	480
10	77	139	e132	e125	e129	e196	829	681	872	1,040	654	480
11	75	136	e132	e125	e130	e190	766	790	802	1,030	854	482
12	78	138	e132	e123	e131	e191	707	814	781	1,060	894	488
13	89	135	e132	e123	e132	e192	644	831	716	1,140	934	493
14	81	135	e131	e121	e133	e193	584	827	665	1,140	940	374
15	72	135	e131	e120	e134	e197	519	816	637	1,120	945	271
16	71	133	e132	e119	e135	e198	487	799	603	1,070	1,000	212
17	71	133	e132	e119	e143	e199	463	804	567	1,000	1,190	200
18	97	133	e132	e118	e147	e200	454	794	532	1,010	1,170	201
19	114	134	e132	e116	e151	e201	429	774	570	1,100	963	200
20	125	e134	e132	e116	e158	e202	487	761	590	1,170	890	199
21	168	e133	e132	e116	e162	e203	542	746	590	1,180	873	195
22	158	e133	e132	e116	e169	e205	527	733	562	1,210	861	199
23	148	e133	e131	e116	e173	e225	497	719	507	1,320	865	199
24	154	e131	e131	e116	e174	e266	474	712	488	1,340	832	209
25	134	e132	e130	e116	e175	e306	464	703	481	1,340	668	200
26	129	e134	e130	e116	e175	e322	472	683	469	1,280	630	200
27	124	e134	e130	e117	e175	e347	474	674	598	1,210	619	201
28	123	e132	e130	e116	e174	e355	613	651	655	1,200	619	179
29	137	e133	e129	e115	---	e368	628	635	840	1,190	630	136
30	138	e134	e129	e114	---	e405	627	652	878	1,060	631	126
31	140	---	e129	e114	---	e412	---	648	---	899	626	---
Total	3,655	4,053	4,073	3,750	4,011	7,269	17,262	21,678	21,319	31,926	24,300	10,093
Mean	118	135	131	121	143	234	575	699	711	1,030	784	336
Max	333	149	133	129	175	412	873	831	944	1,340	1,190	637
Min	71	129	129	114	116	175	415	570	469	597	583	126
Ac-ft	7,250	8,040	8,080	7,440	7,960	14,420	34,240	43,000	42,290	63,330	48,200	20,020

	Calendar Year 2004	Water Year 2005
Total	102,800	153,389
Mean	281	420
Max	985	1,340
Min	68	71
Ac-ft	203,900	304,200



Water-Data Report UT-2005

10079000 SODA POINT RESERVOIR AT ALEXANDER, ID

Bear River Basin

LOCATION.--Lat 42°38'41", long 111°42'44" referenced to North American Datum of 1927, in NW ¼ SE ¼ NW ¼ sec.17, T.9 S., R.41 E., Caribou County, Hydrologic Unit 16010202, 0.5 mi Southeast of Alexander, 5 mi downstream from Soda Creek.

DRAINAGE AREA.--4099 mi².

RESERVOIR-CONTENTS RECORDS

PERIOD OF RECORD.--October 1924 to current year. Prior to 1986, published in reports of the Bear River Commission.

GAGE.--Elevation of gage is 5,600 ft, PacifiCorp datum.

COOPERATION.--Records provided by PacifiCorp, under general supervision of Geological Survey, in connection with a Federal Energy Regulatory Commission project.

REMARKS.--Records good.

EXTREMES FOR CURRENT YEAR.--Maximum contents, 14,710 acre-ft Jul 1-3, elevation 5720.05 ft; minimum contents, 9,516 acre-ft Apr 10, elevation 5714.33 ft.

10079000 SODA POINT RESERVOIR AT ALEXANDER, ID—Continued

RESERVOIR STORAGE, ACRE FEET
WATER YEAR OCTOBER 2004 TO SEPTEMBER 2005
DAILY INSTANTANEOUS VALUES

Day	Oct	Nov	Dec	Jan	Feb	Mar	Apr	May	Jun	Jul	Aug	Sep
1	13,470	13,590	13,410	13,770	13,740	13,910	12,260	12,170	13,830	14,710	13,680	13,940
2	13,560	13,640	13,360	13,770	13,760	13,910	11,980	12,520	14,070	14,710	13,620	13,850
3	13,540	13,670	13,300	13,820	13,760	13,910	11,880	12,710	14,190	14,710	13,700	13,830
4	13,510	13,710	13,280	13,790	13,740	13,860	11,760	12,710	14,130	14,670	13,570	13,850
5	13,470	13,800	13,280	13,790	13,760	13,820	11,350	12,680	14,190	14,620	13,420	13,860
6	13,420	13,860	13,280	13,790	13,760	13,830	10,900	12,760	14,130	14,500	13,240	13,880
7	13,390	13,910	13,310	13,830	13,760	13,790	10,670	12,880	14,160	14,240	13,190	13,940
8	13,360	13,940	13,350	13,880	13,790	13,830	10,410	12,970	14,150	13,980	13,190	13,940
9	13,360	14,000	13,390	13,860	13,790	13,830	10,000	13,150	13,970	13,890	13,380	13,980
10	13,360	14,060	13,440	13,860	13,790	13,830	9,516	13,310	13,730	13,940	13,510	14,000
11	13,330	13,670	13,480	13,880	13,790	13,880	10,220	13,360	13,640	13,830	13,510	14,010
12	13,310	13,250	13,510	13,880	13,790	13,940	11,020	13,390	13,560	13,700	13,560	14,010
13	13,310	13,120	13,560	13,800	13,830	14,000	11,640	13,380	13,510	13,740	13,560	13,940
14	13,350	13,180	13,620	13,790	13,860	14,030	12,100	13,330	13,590	13,820	13,600	13,830
15	13,350	13,210	13,680	13,760	13,860	13,760	11,810	13,310	13,640	13,820	13,570	13,700
16	13,350	13,280	13,730	13,730	13,860	13,160	11,190	13,270	13,640	13,600	13,670	13,640
17	13,350	13,330	13,740	13,730	13,850	12,570	11,350	13,160	13,600	13,440	13,730	13,670
18	13,440	13,380	13,740	13,730	13,830	12,020	11,990	13,000	13,760	13,390	13,770	13,650
19	13,530	13,420	13,760	13,730	13,860	11,540	12,680	12,930	13,890	13,480	13,940	13,700
20	13,740	13,470	13,770	13,740	13,910	11,410	13,450	12,880	13,940	13,600	14,000	13,700
21	13,940	13,510	13,770	13,740	13,880	11,460	13,560	12,820	13,830	13,820	14,000	13,730
22	13,710	13,480	13,770	13,730	13,890	11,600	13,100	12,740	13,740	14,010	14,040	13,860
23	13,350	13,600	13,730	13,710	13,910	11,810	12,620	12,740	13,600	14,060	13,910	14,030
24	13,100	13,600	13,680	13,710	13,910	11,930	12,190	12,720	13,420	14,030	13,820	14,130
25	13,100	13,700	13,680	13,700	13,910	12,110	11,760	12,680	13,250	13,980	13,770	14,240
26	13,150	13,790	13,680	13,680	13,910	12,320	11,530	12,620	13,300	13,970	13,770	14,370
27	13,190	13,740	13,680	13,680	13,910	12,360	11,640	12,690	13,380	14,040	13,770	14,420
28	13,280	13,700	13,670	13,730	13,890	11,930	11,640	12,780	13,790	14,180	13,790	14,470
29	13,380	13,510	13,710	13,730	---	12,170	11,760	12,940	14,310	14,130	13,830	14,470
30	13,470	13,420	13,740	13,760	---	12,820	11,920	13,090	14,670	14,010	13,940	14,470
31	13,540	---	13,770	13,760	---	12,690	---	13,500	---	13,820	13,980	---
Max	13,940	14,060	13,770	13,880	13,910	14,030	13,560	13,500	14,670	14,710	14,040	14,470
Min	13,100	13,120	13,280	13,680	13,740	11,410	9,516	12,170	13,250	13,390	13,190	13,640
(#)	5,718.92	5,718.80	5,719.15	5,719.14	5,719.27	5,718.05	5,717.23	5,718.88	5,720.01	5,719.20	5,719.35	5,719.82
(*)	+730	-120	+350	-10	+130	-1200	-770	+1580	+1170	-850	+160	+490

CAL YR 2004.....(*) -110

WTR YR 2005.....(*) +1,660

(#) Elevation, in feet, at end of month

(*) Change in contents, in acre-feet

10079500 BEAR RIVER AT ALEXANDER, ID

Bear River Basin

LOCATION.--Lat 42°38'42", long 111°41'51" referenced to North American Datum of 1927, in NE ¼ SW ¼ NW ¼ sec.17, T.9 S., R.41 E., Caribou County, Hydrologic Unit 16010202, on right bank 600 ft downstream from Soda hydroelectric plant of Utah Power & Light Co., 0.5 mi southeast of Alexander, and 5 mi downstream from Soda Creek.

DRAINAGE AREA.--4,093 mi².

WATER-DISCHARGE RECORDS

REVISED RECORDS.--WDR UT-74-1: Drainage area.

PERIOD OF RECORD.--March 1911 to current year. Monthly discharge only for some periods, published in WSP 1314.

GAGE.--Water-stage recorder. Elevation of gage is 5,650 ft above NGVD of 1929, from topographic map.

COOPERATION.--Records collected by PacifiCorp, under general supervision of Geological Survey, in connection with a Federal Energy Regulatory Commission project.

REMARKS.--Records fair. Natural flow of stream affected by upstream reservoirs, power development, diversions for irrigation, and return flow from irrigated areas.

AVERAGE DISCHARGE FOR PERIOD OF RECORD.--93 years, 791 ft³/s, 573,500 acre-ft/yr.

EXTREMES FOR PERIOD OF RECORD.--Maximum discharge observed, 4,740 ft³/s, Mar 31, 1911; maximum gage height, 15.95 ft, Dec 11, 1919 (backwater from ice); minimum discharge, 14 ft³/s, Oct 22, 1990.

10079500 BEAR RIVER AT ALEXANDER, ID—Continued

DISCHARGE, CUBIC FEET PER SECOND
WATER YEAR OCTOBER 2004 TO SEPTEMBER 2005
DAILY MEAN VALUES

Day	Oct	Nov	Dec	Jan	Feb	Mar	Apr	May	Jun	Jul	Aug	Sep
1	165	164	192	169	170	172	436	631	635	533	943	617
2	165	164	190	169	170	172	822	582	650	575	901	619
3	165	168	190	169	170	172	823	454	702	577	829	568
4	165	168	182	169	171	172	823	517	815	589	703	502
5	165	162	173	169	171	172	826	690	919	602	695	503
6	165	163	170	169	171	172	947	689	951	718	697	505
7	165	166	170	169	171	172	1,110	687	959	869	698	506
8	165	166	169	169	169	172	1,120	686	960	1,020	657	514
9	165	166	170	168	169	172	1,110	696	959	1,150	606	526
10	165	167	169	168	169	172	1,110	736	958	1,100	603	518
11	165	325	169	168	170	172	1,100	813	957	1,020	697	524
12	165	447	169	170	170	173	672	916	916	1,090	850	529
13	165	361	169	169	170	175	317	909	823	1,180	887	527
14	165	166	169	170	171	174	323	906	752	1,130	884	456
15	165	166	169	169	171	175	323	908	671	1,060	886	350
16	165	167	169	169	171	296	582	908	609	1,060	969	301
17	165	167	169	168	171	614	911	876	609	1,090	1,070	266
18	165	169	170	168	173	611	623	914	572	1,140	1,060	222
19	165	172	174	169	174	606	183	915	521	1,140	929	219
20	165	172	170	170	174	606	183	884	522	1,140	754	215
21	165	171	169	169	172	496	182	838	551	1,140	783	216
22	203	169	169	168	172	330	368	832	584	1,140	827	215
23	439	169	169	168	172	330	825	839	582	1,190	829	200
24	384	169	170	168	172	333	820	809	572	1,300	830	168
25	207	169	169	169	172	336	814	763	571	1,350	749	169
26	162	168	168	169	172	336	811	780	571	1,300	648	170
27	162	168	169	169	172	337	772	785	562	1,220	634	169
28	162	169	170	169	172	455	732	720	602	1,180	613	169
29	163	207	170	169	---	755	731	640	606	1,120	615	166
30	163	245	170	170	---	584	690	638	588	1,080	619	167
31	163	---	169	170	---	192	---	634	---	1,000	617	---
Total	5,673	5,770	5,334	5,236	4,792	9,806	21,089	23,595	21,249	31,803	24,082	10,796
Mean	183	192	172	169	171	316	703	761	708	1,026	777	360
Max	439	447	192	170	174	755	1,120	916	960	1,350	1,070	619
Min	162	162	168	168	169	172	182	454	521	533	603	166
Ac-ft	11,250	11,440	10,580	10,390	9,500	19,450	41,830	46,800	42,150	63,080	47,770	21,410

	Calendar Year 2004	Water Year 2005
Total	122,210	169,225
Mean	334	464
Max	1,070	1,350
Min	97	162
Ac-ft	242,400	335,700

10080000 BEAR RIVER BELOW GRACE DAM, NEAR GRACE, ID

Bear River Basin

LOCATION.--Lat 42°35'11", long 111°43'51" referenced to North American Datum of 1927, in NE ¼ SE ¼ NW ¼ sec.1, T.10 S., R.40 E., Caribou County, Hydrologic Unit 16010202, on left bank 1,000 ft downstream from dam, and 1 mi north of Grace.

DRAINAGE AREA.--4,110 mi².

WATER-DISCHARGE RECORDS

PERIOD OF RECORD.--April 1922 to November 1923 (fragmentary); March 1924 to current year. 1945 to 1950 published in reports on Bear River Hydrometric Data, water year 1946 published in WSP 1060. Prior to 1986, not published, records available from PacifiCorp.

GAGE.--Water-stage recorder. Elevation of gage is 5,550 ft above NGVD of 1929, from topographic map.

COOPERATION.--Records collected by PacifiCorp.

REMARKS.--Records fair.

EXTREMES FOR PERIOD OF RECORD.--Maximum discharge, 4,390 ft³/s, Jun 10, 1986, gage height, 6.77 ft; minimum, 0.74 ft³/s, Feb 2, 1986.

10080000 BEAR RIVER BELOW GRACE DAM, NEAR GRACE, ID—Continued

DISCHARGE, CUBIC FEET PER SECOND
WATER YEAR OCTOBER 2004 TO SEPTEMBER 2005
DAILY MEAN VALUES

Day	Oct	Nov	Dec	Jan	Feb	Mar	Apr	May	Jun	Jul	Aug	Sep
1	33	114	93	99	105	96	102	89	87	17	110	70
2	85	117	93	98	104	98	94	88	94	44	107	71
3	82	128	93	99	104	96	95	90	102	48	108	72
4	80	135	93	99	102	98	95	96	88	50	104	71
5	73	125	93	99	102	96	94	87	87	58	106	68
6	66	116	93	100	104	87	93	89	83	99	100	68
7	65	119	95	100	104	84	100	93	85	92	98	69
8	67	119	96	100	103	86	117	90	78	98	97	68
9	67	120	92	100	101	86	113	89	79	95	98	69
10	68	106	93	101	101	86	101	87	81	92	98	70
11	69	15	93	102	101	86	102	87	77	100	98	69
12	73	119	93	101	101	88	211	86	77	94	96	68
13	77	95	93	101	103	90	316	88	77	111	97	72
14	77	118	94	103	103	89	323	91	77	93	99	94
15	77	116	94	104	99	88	324	88	75	94	98	194
16	77	116	94	103	100	88	520	86	75	95	106	126
17	76	117	94	104	100	92	863	87	91	96	93	96
18	81	117	95	103	98	92	662	87	94	98	94	37
19	99	117	95	103	99	89	185	86	96	98	96	30
20	94	118	99	103	100	91	203	86	95	105	96	36
21	112	117	98	104	100	91	164	88	96	103	94	41
22	111	115	98	104	100	93	176	84	97	109	95	53
23	113	113	97	104	99	93	133	96	99	110	93	59
24	113	113	96	104	99	90	122	94	131	140	90	43
25	109	114	96	105	99	92	117	86	97	228	84	36
26	110	114	97	105	99	96	101	96	85	255	78	40
27	118	112	97	105	99	96	98	89	70	146	80	49
28	122	118	97	105	98	96	93	91	95	127	82	51
29	123	115	97	105	---	99	90	90	95	111	80	51
30	121	94	100	105	---	96	89	93	90	113	82	47
31	126	---	99	105	---	94	---	90	---	115	80	---
Total	2,764	3,372	2,950	3,173	2,827	2,842	5,896	2,767	2,653	3,234	2,937	1,988
Mean	89.2	112	95.2	102	101	91.7	197	89.3	88.4	104	94.7	66.3
Max	126	135	100	105	105	99	863	96	131	255	110	194
Min	33	15	92	98	98	84	89	84	70	17	78	30
Ac-ft	5,480	6,690	5,850	6,290	5,610	5,640	11,690	5,490	5,260	6,410	5,830	3,940

	Calendar Year 2004	Water Year 2005
Total	20,539.1	37,403
Mean	56.1	102
Max	212	863
Min	1.5	15
Ac-ft	40,740	74,190

10086000 ONEIDA NARROWS RESERVOIR AT ONEIDA, ID

Bear River Basin

LOCATION.--Lat 42°16'34", long 111°44'56" referenced to North American Datum of 1927, in SW ¼ NW ¼ SE ¼ sec.23, T.13 S., R.40 E., Franklin County, Hydrologic Unit 16010202, 6 mi south of Cleveland.

DRAINAGE AREA.--4,455 mi².

RESERVOIR-CONTENTS RECORDS

REVISED RECORDS.--WDR UT-74-1, WDR UT-89-1: Drainage area; WDR UT-88-1: 1987.

PERIOD OF RECORD.--October 1914 to current year. Prior to 1986, published in reports of Bear River Commission.

GAGE.--Elevation of gage is 4,800 ft, PacifiCorp datum.

COOPERATION.--Records provided by Pacificorp, under general supervision of Geological Survey, in connection with a Federal Energy Regulatory Commission project.

REMARKS.--Records fair.

EXTREMES FOR CURRENT YEAR.--Maximum contents, 10,720 acre-ft Mar 28, elevation 4882.45 ft; minimum contents 9,914 acre-ft, Aug 13, elevation 4880.15 ft.

10086000 ONEIDA NARROWS RESERVOIR AT ONEIDA, ID—Continued

RESERVOIR STORAGE, ACRE FEET
WATER YEAR OCTOBER 2004 TO SEPTEMBER 2005
DAILY INSTANTANEOUS VALUES

Day	Oct	Nov	Dec	Jan	Feb	Mar	Apr	May	Jun	Jul	Aug	Sep
1	10,330	10,230	10,480	10,490	10,390	10,530	10,560	10,430	10,200	10,320	10,540	10,390
2	10,310	10,270	10,380	10,410	10,360	10,520	10,490	10,310	10,280	10,320	10,450	10,280
3	10,300	10,320	10,440	10,390	10,350	10,490	10,470	10,410	10,250	10,360	10,560	10,150
4	10,310	10,290	10,400	10,400	10,320	10,460	10,380	10,370	10,240	10,360	10,520	10,210
5	10,230	10,320	10,520	10,390	10,350	10,460	10,440	10,340	10,220	10,230	10,570	10,270
6	10,280	10,330	10,540	10,340	10,330	10,450	10,570	10,370	10,230	10,240	10,550	10,320
7	10,310	10,280	10,570	10,360	10,360	10,460	10,450	10,390	10,230	10,060	10,520	10,400
8	10,280	10,230	10,540	10,340	10,390	10,490	10,360	10,340	10,220	10,160	10,340	10,490
9	10,260	10,230	10,480	10,420	10,390	10,550	10,430	10,220	10,180	10,260	10,360	10,510
10	10,220	10,230	10,480	10,480	10,440	10,660	10,430	10,090	10,180	10,230	10,360	10,460
11	10,330	10,410	10,490	10,300	10,430	10,530	10,340	10,210	10,090	10,250	10,480	10,360
12	10,200	10,540	10,440	10,370	10,490	10,530	10,370	10,220	10,280	10,490	10,460	10,500
13	10,240	10,670	10,390	10,390	10,520	10,200	10,360	10,340	10,240	10,430	9,914	10,460
14	10,300	10,560	10,440	10,320	10,540	10,200	10,260	10,220	10,350	10,240	10,140	10,390
15	10,350	10,510	10,470	10,380	10,420	10,110	9,997	10,140	10,240	10,230	10,280	10,430
16	10,300	10,520	10,520	10,510	10,330	10,200	10,240	10,210	10,240	10,220	10,600	10,450
17	10,310	10,500	10,550	10,570	10,260	10,320	10,330	10,260	10,290	10,310	10,540	10,450
18	10,430	10,460	10,540	10,520	10,260	10,260	10,120	10,240	10,230	10,350	10,540	10,400
19	10,150	10,500	10,520	10,540	10,370	10,290	10,310	10,300	10,220	10,280	10,310	10,450
20	10,330	10,530	10,520	10,500	10,410	10,290	10,200	10,150	10,220	10,280	10,420	10,350
21	10,250	10,480	10,410	10,500	10,450	10,170	10,150	10,290	10,230	10,290	10,560	10,190
22	10,450	10,460	10,410	10,470	10,470	10,110	10,210	10,250	10,290	10,240	10,540	10,100
23	10,360	10,440	10,440	10,500	10,480	10,140	10,240	10,180	10,460	10,390	10,480	10,130
24	10,190	10,430	10,440	10,500	10,450	10,040	10,280	10,250	10,380	10,530	10,390	10,110
25	10,170	10,460	10,420	10,490	10,430	10,060	10,190	10,260	10,410	10,530	10,160	10,080
26	10,130	10,510	10,530	10,500	10,410	10,110	10,180	10,180	10,420	10,550	10,070	10,090
27	10,200	10,480	10,510	10,560	10,480	10,200	10,220	10,220	10,420	10,560	10,040	10,140
28	10,360	10,520	10,470	10,500	10,500	10,720	10,390	10,170	10,500	10,540	10,170	10,140
29	10,440	10,340	10,390	10,480	---	10,420	10,060	10,040	10,510	10,570	10,360	10,150
30	10,250	10,460	10,410	10,530	---	10,040	10,170	10,250	10,440	10,570	10,530	10,170
31	10,200	---	10,440	10,380	---	10,250	---	10,260	---	10,600	10,540	---
Max	10,450	10,670	10,570	10,570	10,540	10,720	10,570	10,430	10,510	10,600	10,600	10,510
Min	10,130	10,230	10,380	10,300	10,260	10,040	9,997	10,040	10,090	10,060	9,914	10,080
(#)	4,880.96	4,881.72	4,881.67	4,881.49	4,881.84	4,881.12	4,880.90	4,881.16	4,881.66	4,882.10	4,881.96	4,880.90
(*)	-100	+260	-20	-60	+120	-250	-80	+90	+180	+160	-60	-370

CAL YR 2004.....(*) -110

WTR YR 2005.....(*) -130

(#) Elevation, in feet, at end of month

(*) Change in contents, in acre-feet



Water-Data Report UT-2005

10086500 BEAR RIVER BELOW UTAH POWER & LIGHT CO.'S TAILRACE, AT ONEIDA, ID

Bear River Basin

LOCATION.--Lat 42°16'00", long 111°45'04" referenced to North American Datum of 1927, in NE ¼ SE ¼ NW ¼ sec.26, T.13 S., R.40 E., Franklin County, Hydrologic Unit 16010202, on right bank 200 ft downstream from tailrace of Oneida plant and 6 mi south of Cleveland.

DRAINAGE AREA.--4,456 mi².

WATER-DISCHARGE RECORDS

REVISED RECORDS.--WDR UT-74-1: Drainage area.

PERIOD OF RECORD.--October 1921 to current year. Monthly discharge only October 1921 to September 1945, published in WSP 1314.

GAGE.--Water-stage recorder. Elevation of gage is 4,800 ft above NGVD of 1929, from topographic map.

COOPERATION.--Records collected by PacifiCorp, under general supervision of Geological Survey, in connection with a Federal Energy Regulatory Commission project.

REMARKS.--Records fair. Natural flow of stream affected by upstream reservoirs, power development, diversions for irrigation, and return flow from irrigated areas.

AVERAGE DISCHARGE FOR PERIOD OF RECORD.--84 years, 868 ft³/s, 628,700 acre-ft/yr.

EXTREMES FOR PERIOD OF RECORD.--Maximum daily discharge, 5,480 ft³/s, May 8, 1922; minimum, 3.0 ft³/s, Jun 13, 1978.

10086500 BEAR RIVER BELOW UTAH POWER AND LIGHT CO.'S TAILRACE, AT ONEIDA, ID—Continued

DISCHARGE, CUBIC FEET PER SECOND
WATER YEAR OCTOBER 2004 TO SEPTEMBER 2005
DAILY MEAN VALUES

Day	Oct	Nov	Dec	Jan	Feb	Mar	Apr	May	Jun	Jul	Aug	Sep
1	197	242	304	324	317	265	276	1,180	1,070	408	823	524
2	206	282	432	323	302	265	538	913	1,060	394	842	681
3	237	245	312	323	302	268	1,060	889	898	294	886	683
4	211	251	261	323	306	306	1,010	718	1,160	264	711	613
5	251	271	266	323	305	300	1,150	1,100	1,200	271	629	462
6	223	274	266	323	314	288	977	1,170	1,220	342	599	442
7	201	274	272	321	294	277	1,200	1,210	1,560	465	643	437
8	224	275	327	300	287	276	1,570	1,420	1,420	735	682	426
9	257	271	428	289	285	300	1,470	1,220	1,450	740	625	444
10	195	254	335	318	285	321	1,280	1,420	1,370	741	453	483
11	187	247	335	449	284	294	1,390	1,510	1,330	724	503	526
12	258	351	371	262	284	523	1,430	1,430	1,360	675	551	700
13	208	356	337	282	283	505	809	1,510	1,220	693	707	529
14	218	542	298	259	285	671	747	1,350	1,110	886	911	601
15	145	270	280	258	369	469	874	1,530	974	900	983	592
16	231	270	282	259	354	358	790	1,410	1,060	756	916	396
17	244	285	279	277	320	613	1,020	1,380	804	705	913	363
18	180	251	314	333	292	616	1,210	1,470	830	699	1,090	350
19	320	244	314	287	292	777	1,010	1,430	792	756	1,090	347
20	227	251	325	326	291	794	478	1,470	716	811	1,100	261
21	378	281	321	325	291	833	755	1,440	638	775	776	349
22	439	282	285	312	290	666	604	1,240	621	795	752	462
23	600	274	277	293	289	666	869	1,370	550	882	899	386
24	665	267	322	291	288	659	1,200	1,300	330	879	931	349
25	553	245	308	289	324	617	1,190	1,190	489	972	882	346
26	343	248	248	286	279	515	1,290	1,090	343	1,100	844	327
27	211	257	356	291	279	481	1,170	1,260	342	1,090	687	298
28	178	278	352	373	287	482	1,360	1,100	355	1,100	613	306
29	253	297	330	333	---	485	1,210	1,020	341	970	496	307
30	374	261	326	245	---	1,010	1,240	942	341	959	409	306
31	327	---	324	427	---	878	---	927	---	875	426	---
Total	8,741	8,396	9,787	9,624	8,378	15,778	31,177	38,609	26,954	22,656	23,372	13,296
Mean	282	280	316	310	299	509	1,039	1,245	898	731	754	443
Max	665	542	432	449	369	1,010	1,570	1,530	1,560	1,100	1,100	700
Min	145	242	248	245	279	265	276	718	330	264	409	261
Ac-ft	17,340	16,650	19,410	19,090	16,620	31,300	61,840	76,580	53,460	44,940	46,360	26,370

	Calendar Year 2004	Water Year 2005
Total	143,556	216,768
Mean	392	594
Max	1,230	1,570
Min	70	145
Ac-ft	284,700	430,000

10092700 BEAR RIVER AT IDAHO-UTAH STATE LINE

Bear River Basin

LOCATION.--Lat 42°00'47", long 111°55'14" referenced to North American Datum of 1927, in NW ¼ NE ¼ sec.29, T.16 S., R.39 E., Franklin County, Idaho, Hydrologic Unit 16010202, on left bank 1,050 ft downstream from inlet canal to Cub River pumps, 1.1 mi downstream from Weston Creek, 1.8 mi upstream from Idaho-Utah State line, and 3.5 mi southeast of Weston.

DRAINAGE AREA.--4,884 mi².

WATER-DISCHARGE RECORDS

REVISED RECORDS.--WDR UT-74-1: Drainage area.

PERIOD OF RECORD.--October 1970 to current year.

GAGE.--Water-stage recorder. Elevation of gage is 4,420 ft above NGVD of 1929, from topographic map. Prior to September 10, 1982 at datum 2.00 ft higher. September 10, 1982 to September 30, 1985 at datum 10.0 ft lower.

REMARKS.--Records good except for estimated daily discharges which are fair. Natural flow of stream affected by storage reservoirs, power developments, diversions for irrigation, and return flow from irrigated areas.

EXTREMES FOR PERIOD OF RECORD.--Maximum discharge, 4,870 ft³/s, Jun 14, 1984, gage height, 9.20 ft; minimum daily discharge, 24 ft³/s, May 16, 2004.

EXTREMES FOR CURRENT YEAR.--Maximum discharge, 2,370 ft³/s, Apr 28, gage height, 14.72 ft; minimum daily discharge, 81 ft³/s, Jul 5.

10092700 BEAR RIVER AT IDAHO-UTAH STATE LINE—Continued

DISCHARGE, CUBIC FEET PER SECOND
WATER YEAR OCTOBER 2004 TO SEPTEMBER 2005
DAILY MEAN VALUES

[e, estimated]

Day	Oct	Nov	Dec	Jan	Feb	Mar	Apr	May	Jun	Jul	Aug	Sep
1	213	296	285	407	427	396	e530	1,700	1,400	233	568	273
2	209	349	503	389	373	398	555	1,420	1,520	240	539	444
3	273	311	359	384	376	403	1,150	1,260	1,400	152	592	495
4	227	286	289	379	376	435	1,130	1,100	1,490	83	481	477
5	293	322	396	377	383	439	1,340	1,350	1,480	81	316	336
6	243	333	320	379	394	428	1,100	1,460	1,560	104	302	273
7	213	333	333	378	376	420	1,300	1,650	1,910	294	290	267
8	230	338	352	367	357	417	1,680	1,860	1,830	447	382	266
9	274	328	476	381	350	383	1,650	1,710	1,780	497	327	298
10	222	298	416	350	348	433	1,450	1,900	1,630	499	204	361
11	183	268	388	563	344	454	1,520	2,120	1,640	502	171	436
12	277	406	396	366	362	666	1,520	1,990	1,660	436	225	594
13	229	426	385	343	358	755	1,150	1,970	1,630	419	360	527
14	263	612	319	327	366	862	934	1,810	1,430	564	590	522
15	207	360	300	327	424	727	1,070	1,870	1,350	626	674	577
16	244	325	289	317	448	567	875	1,800	1,370	472	667	504
17	399	320	280	311	397	753	1,120	1,820	1,150	462	696	411
18	252	289	323	413	382	774	1,280	1,960	1,170	382	812	427
19	402	262	332	335	385	901	1,220	1,800	1,090	452	869	410
20	447	260	340	399	392	1,040	773	1,920	1,010	498	930	341
21	464	298	402	407	380	1,120	1,030	1,860	863	506	650	304
22	626	305	344	399	385	922	854	1,780	784	487	549	515
23	671	298	322	360	381	1,000	931	1,830	736	576	644	469
24	775	292	426	353	380	1,070	1,360	1,640	468	602	706	399
25	717	261	397	359	424	923	1,390	1,700	490	636	652	375
26	477	264	272	348	367	780	1,480	1,510	478	766	645	357
27	319	267	390	353	376	693	1,490	1,590	297	751	501	306
28	233	293	420	448	387	e640	1,810	1,410	294	786	440	291
29	361	326	391	420	---	e600	2,040	1,320	271	648	327	287
30	407	285	400	314	---	e560	1,700	1,250	222	675	208	311
31	491	---	404	468	---	e540	---	1,300	---	576	180	---
Total	10,841	9,611	11,249	11,721	10,698	20,499	37,432	51,660	34,403	14,452	15,497	11,853
Mean	350	320	363	378	382	661	1,248	1,666	1,147	466	500	395
Max	775	612	503	563	448	1,120	2,040	2,120	1,910	786	930	594
Min	183	260	272	311	344	383	530	1,100	222	81	171	266
Ac-ft	21,500	19,060	22,310	23,250	21,220	40,660	74,250	102,500	68,240	28,670	30,740	23,510

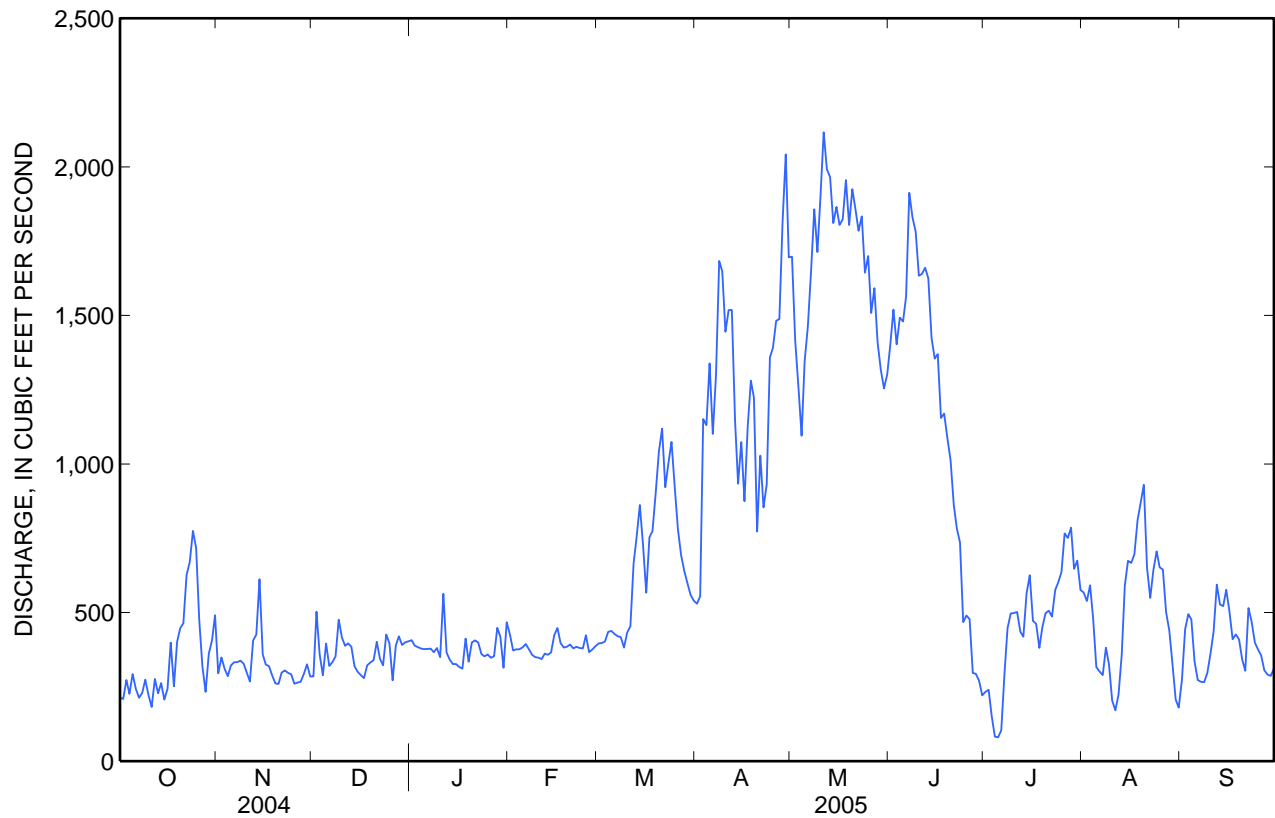
STATISTICS OF MONTHLY MEAN DATA FOR WATER YEARS 1971 - 2005, BY WATER YEAR (WY)

	Oct	Nov	Dec	Jan	Feb	Mar	Apr	May	Jun	Jul	Aug	Sep
Mean	896	955	966	945	955	1,155	1,359	1,470	1,340	1,011	921	895
Max	2,850	2,983	2,552	1,904	2,556	3,264	3,594	3,968	4,263	3,442	2,416	2,545
(WY)	(1984)	(1984)	(1985)	(1984)	(1986)	(1986)	(1986)	(1986)	(1986)	(1983)	(1984)	(1986)
Min	223	298	310	269	296	351	351	158	301	393	461	192
(WY)	(2004)	(1993)	(1982)	(2004)	(2002)	(1991)	(2003)	(2003)	(2004)	(1995)	(1993)	(1992)

10092700 BEAR RIVER AT IDAHO-UTAH STATE LINE—Continued

SUMMARY STATISTICS

	Calendar Year 2004		Water Year 2005		Water Years 1971 - 2005	
Annual total	135,892		239,916			
Annual mean	371		657		1,072	
Highest annual mean					2,728	1984
Lowest annual mean					358	2004
Highest daily mean	1,160	Mar 27	2,120	May 11	4,830	Jun 21, 1983
Lowest daily mean	24	May 16	81	Jul 5	24	May 16, 2004
Annual seven-day minimum	49	May 11	159	Jun 30	49	May 11, 2004
Annual runoff (ac-ft)	269,500		475,900		777,000	
10 percent exceeds	601		1,520		2,180	
50 percent exceeds	326		426		814	
90 percent exceeds	181		273		300	





Water-Data Report UT-2005

10105900 LITTLE BEAR RIVER AT PARADISE, UT

Bear River Basin

LOCATION.--Lat 41°34'32", long 111°51'16" referenced to North American Datum of 1927, in NW ¼ NE ¼ SE ¼ sec.29, T.10 N., R.1 E., Cache County, Hydrologic Unit 16010203, on right bank 1 mi west of Paradise.

DRAINAGE AREA.--182 mi².

WATER-DISCHARGE RECORDS

PERIOD OF RECORD.--October 1992 to current year.

GAGE.--Water-stage recorder. Elevation of gage is 4,740 ft above NGVD of 1929, from topographic map. Prior to August 11, 1994, 50 ft upstream at different datum.

REMARKS.--Records good.

EXTREMES FOR PERIOD OF RECORD.--Maximum discharge, 4,800 ft³/s, Apr 28, 2005, gage height, 11.65 ft, minimum daily discharge, 4.4 ft³/s Feb 10, 1993.

EXTREMES FOR CURRENT YEAR.--Maximum discharge, 4,800 ft³/s, Apr 28, gage height, 11.65 ft; minimum discharge, 16.3 ft³/s, Oct 4.

10105900 LITTLE BEAR RIVER AT PARADISE, UT—Continued

DISCHARGE, CUBIC FEET PER SECOND
WATER YEAR OCTOBER 2004 TO SEPTEMBER 2005
DAILY MEAN VALUES

Day	Oct	Nov	Dec	Jan	Feb	Mar	Apr	May	Jun	Jul	Aug	Sep
1	24	39	26	36	37	36	72	473	363	64	29	29
2	24	36	27	35	35	37	93	443	350	57	30	29
3	23	35	26	35	33	37	150	438	321	59	30	29
4	22	34	26	35	31	38	161	437	299	58	31	28
5	21	34	27	35	33	40	110	455	281	56	32	29
6	21	32	26	35	31	41	125	509	289	51	30	28
7	21	33	26	32	32	46	200	506	307	48	30	28
8	21	32	30	37	30	53	306	474	289	49	30	29
9	21	32	63	36	31	63	165	485	260	48	30	33
10	21	32	71	43	31	88	134	634	231	48	30	34
11	21	33	52	44	32	99	131	938	214	41	30	35
12	21	33	47	42	31	140	159	587	309	35	30	43
13	21	32	43	38	28	122	221	501	247	35	30	43
14	19	31	40	37	35	83	211	457	229	37	30	42
15	20	30	38	40	36	65	155	460	225	36	30	43
16	20	30	37	41	36	63	162	485	219	35	30	42
17	19	30	35	40	38	64	319	574	199	35	36	41
18	28	29	34	40	36	59	467	493	190	35	37	41
19	29	30	33	41	36	81	384	470	171	35	42	41
20	54	29	33	41	37	134	408	527	147	34	41	38
21	50	29	31	40	38	91	341	569	138	34	37	41
22	38	28	32	40	39	84	299	540	130	33	34	40
23	33	29	31	42	38	153	340	527	118	34	33	37
24	46	28	29	45	37	145	442	516	101	33	32	38
25	39	29	31	46	37	98	546	483	87	31	33	43
26	50	30	31	45	37	79	524	441	81	31	34	44
27	43	30	33	42	37	77	546	410	74	33	33	41
28	48	29	33	39	37	171	2,260	383	73	35	33	42
29	46	24	34	38	---	115	1,010	372	74	33	33	41
30	41	23	37	38	---	87	582	377	70	31	31	40
31	44	---	36	37	---	77	---	350	---	29	29	---
Total	949	925	1,098	1,215	969	2,566	11,023	15,314	6,086	1,253	1,000	1,112
Mean	30.6	30.8	35.4	39.2	34.6	82.8	367	494	203	40.4	32.3	37.1
Max	54	39	71	46	39	171	2,260	938	363	64	42	44
Min	19	23	26	32	28	36	72	350	70	29	29	28
Ac-ft	1,880	1,830	2,180	2,410	1,920	5,090	21,860	30,380	12,070	2,490	1,980	2,210

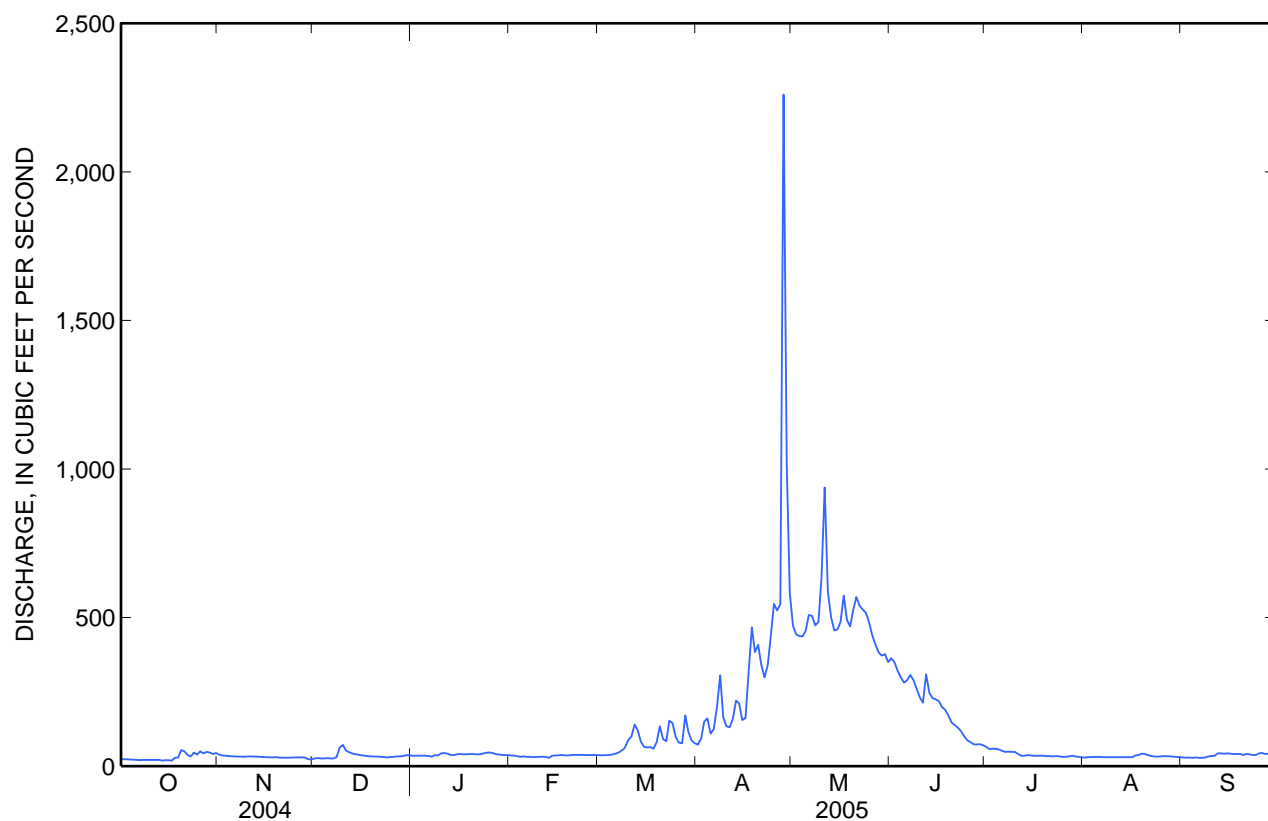
STATISTICS OF MONTHLY MEAN DATA FOR WATER YEARS 1993 - 2005, BY WATER YEAR (WY)

	Oct	Nov	Dec	Jan	Feb	Mar	Apr	May	Jun	Jul	Aug	Sep
Mean	42.3	44.8	44.0	46.3	48.6	106	210	302	132	34.1	29.5	35.0
Max	114	124	88.8	118	92.5	186	367	626	337	89.3	95.3	95.5
(WY)	(1999)	(1999)	(1997)	(1997)	(1999)	(1997)	(2005)	(1998)	(1998)	(1998)	(1998)	(1998)
Min	16.5	20.6	19.0	17.5	14.8	56.8	67.4	74.7	13.6	11.6	12.7	15.0
(WY)	(1993)	(1993)	(1993)	(1993)	(1993)	(2002)	(2003)	(2001)	(2003)	(2003)	(1993)	(2003)

10105900 LITTLE BEAR RIVER AT PARADISE, UT—Continued

SUMMARY STATISTICS

	Calendar Year 2004		Water Year 2005		Water Years 1993 - 2005	
Annual total	14,831		43,510			
Annual mean	40.5		119		89.7	
Highest annual mean					172	1998
Lowest annual mean					36.9	2003
Highest daily mean	201	Mar 23	2,260	Apr 28	2,260	Apr 28, 2005
Lowest daily mean	13	Jun 24	19	Oct 14	4.4	Feb 10, 1993
Annual seven-day minimum	13	Jun 21	20	Oct 11	6.9	Feb 5, 1993
Annual runoff (ac-ft)	29,420		86,300		64,960	
10 percent exceeds	92		394		216	
50 percent exceeds	27		38		42	
90 percent exceeds	14		29		16	





Water-Data Report UT-2005

10108400 LOGAN, HYDE PARK AND SMITHFIELD CANAL AT HEAD, NEAR LOGAN, UT

Bear River Basin

LOCATION.--Lat 41°44'35", long 111°45'40" referenced to North American Datum of 1927, in NE ¼ NW ¼ NE ¼ sec.31, T.12 N., R.2 E., Cache County, Hydrologic Unit 16010203, Cache National Forest, on left bank 487 ft downstream from head and 3.8 mi east of Logan.

WATER-DISCHARGE RECORDS

PERIOD OF RECORD.--May 1963 to current year.

GAGE.--Water-stage recorder and 8-ft concrete Parshall flume. Datum of gage is 4,858.69 ft above NGVD of 1929 (Bureau of Public Roads bench mark).

REMARKS.--Records good except for estimated daily discharges, which are fair.

AVERAGE DISCHARGE FOR PERIOD OF RECORD.--42 years, 21.8 ft³/s, 15,870 acre-ft/yr.

EXTREMES FOR PERIOD OF RECORD.--Maximum daily discharge, 111 ft³/s, May 23, 1963, May 28, 1966; no flow at times most years.

10108400 LOGAN, HYDE PARK AND SMITHFIELD CANAL AT HEAD, NEAR LOGAN, UT—Continued

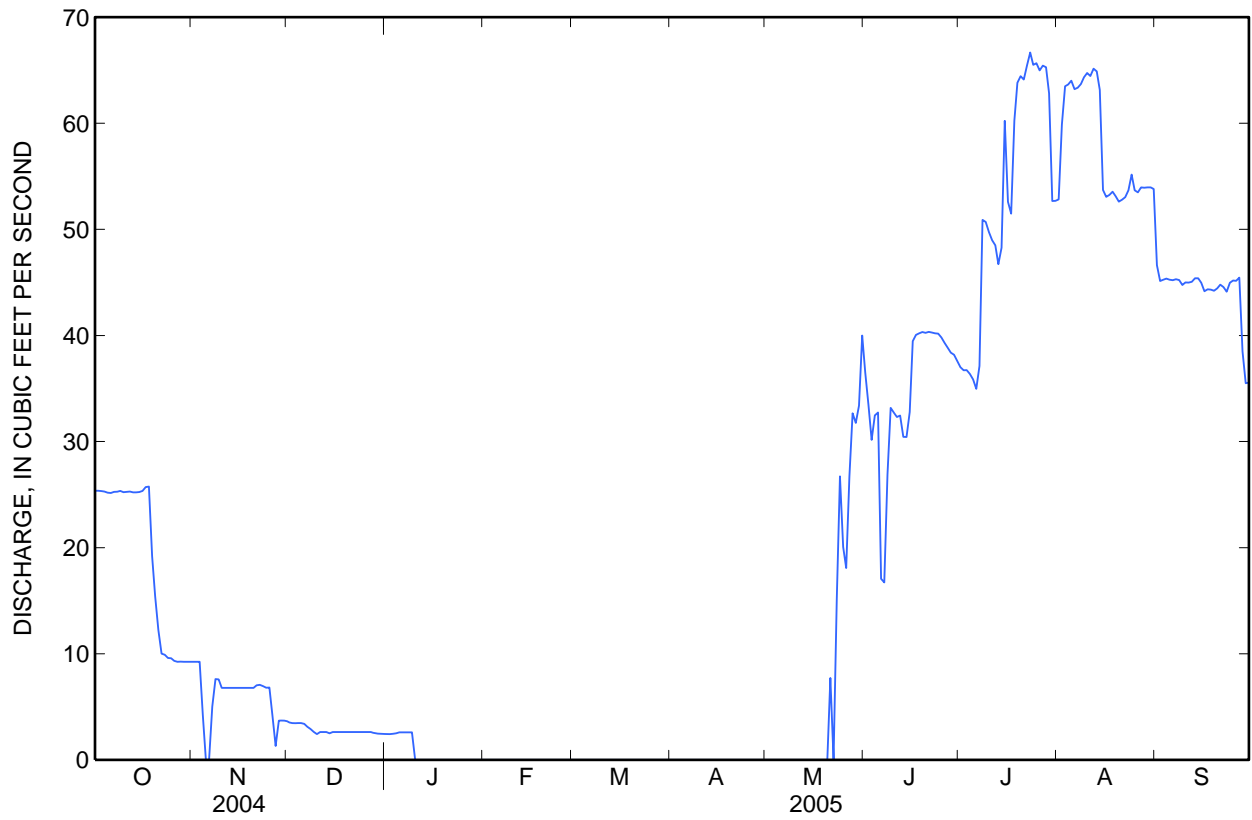
DISCHARGE, CUBIC FEET PER SECOND
WATER YEAR OCTOBER 2004 TO SEPTEMBER 2005
DAILY MEAN VALUES

[e, estimated]

Day	Oct	Nov	Dec	Jan	Feb	Mar	Apr	May	Jun	Jul	Aug	Sep
1	25	9.3	3.6	2.4	e0.00	e0.00	e0.00	e0.00	37	37	53	47
2	25	9.3	3.5	2.4	e0.00	e0.00	e0.00	e0.00	33	37	60	45
3	25	9.3	3.5	2.5	e0.00	e0.00	e0.00	e0.00	30	37	63	45
4	25	4.2	3.5	2.5	e0.00	e0.00	e0.00	e0.00	32	36	64	45
5	25	0.00	3.5	e2.6	e0.00	e0.00	e0.00	e0.00	33	36	64	45
6	25	0.00	3.4	e2.6	e0.00	e0.00	e0.00	e0.00	17	35	63	45
7	25	5.0	3.1	e2.6	e0.00	e0.00	e0.00	0.00	17	37	63	45
8	25	7.6	2.9	e2.6	e0.00	e0.00	e0.00	0.00	27	51	64	45
9	25	7.6	2.6	e2.6	e0.00	e0.00	e0.00	0.00	33	51	64	45
10	25	6.8	2.4	e0.00	e0.00	e0.00	e0.00	0.00	33	50	65	45
11	25	6.8	2.6	e0.00	e0.00	e0.00	e0.00	0.00	32	49	64	45
12	25	6.8	2.6	e0.00	e0.00	e0.00	e0.00	0.00	32	48	65	45
13	25	6.8	2.6	e0.00	e0.00	e0.00	e0.00	0.00	30	47	65	45
14	25	6.8	2.5	e0.00	e0.00	e0.00	e0.00	0.00	30	48	63	45
15	25	6.8	2.6	e0.00	e0.00	e0.00	e0.00	0.00	33	60	54	45
16	25	6.8	2.6	e0.00	e0.00	e0.00	e0.00	0.00	39	53	53	44
17	26	6.8	2.6	e0.00	e0.00	e0.00	e0.00	0.00	40	51	53	44
18	26	6.8	2.6	e0.00	e0.00	e0.00	e0.00	0.00	40	60	54	44
19	19	6.8	2.6	e0.00	e0.00	e0.00	e0.00	0.00	40	64	53	44
20	15	6.8	2.6	e0.00	e0.00	e0.00	e0.00	0.00	40	64	53	44
21	12	7.0	2.6	e0.00	e0.00	e0.00	e0.00	7.7	40	64	53	45
22	10	7.1	2.6	e0.00	e0.00	e0.00	e0.00	0.04	40	65	53	45
23	9.9	7.0	2.6	e0.00	e0.00	e0.00	e0.00	15	40	67	54	44
24	9.6	6.8	2.6	e0.00	e0.00	e0.00	e0.00	27	40	66	55	45
25	9.6	6.8	2.6	e0.00	e0.00	e0.00	e0.00	20	40	66	54	45
26	9.3	4.2	2.6	e0.00	e0.00	e0.00	e0.00	18	39	65	53	45
27	9.3	1.3	2.6	e0.00	e0.00	e0.00	e0.00	27	39	65	54	45
28	9.3	3.7	2.6	e0.00	e0.00	e0.00	e0.00	33	38	65	54	38
29	9.3	3.7	2.5	e0.00	---	e0.00	e0.00	32	38	63	54	35
30	9.3	3.7	2.5	e0.00	---	e0.00	e0.00	33	38	53	54	36
31	9.3	---	2.5	e0.00	---	e0.00	---	40	---	53	54	---
Total	592.9	178.40	86.2	22.80	0.00	0.00	0.00	252.74	1,040	1,643	1,792	1,320
Mean	19.1	5.95	2.78	0.74	0.00	0.00	0.00	8.15	34.7	53.0	57.8	44.0
Max	26	9.3	3.6	2.6	0.00	0.00	0.00	40	40	67	65	47
Min	9.3	0.00	2.4	0.00	0.00	0.00	0.00	0.00	17	35	53	35
Ac-ft	1,180	354	171	45	0.00	0.00	0.00	501	2,060	3,260	3,550	2,620

	Calendar Year 2004	Water Year 2005
Total	6,905.22	6,928.04
Mean	18.9	19.0
Max	66	67
Min	0.00	0.00
Ac-ft	13,700	13,740

10108400 LOGAN, HYDE PARK AND SMITHFIELD CANAL AT HEAD, NEAR LOGAN, UT—Continued



10109000 LOGAN RIVER ABOVE STATE DAM, NEAR LOGAN, UT

Bear River Basin

LOCATION.--Lat 41°44'36", long 111°46'55" referenced to North American Datum of 1927, in NW ¼ NW ¼ NE ¼ sec.36, T.12 N., R.1 E., Cache County, Hydrologic Unit 16010203, on left bank 0.5 mi upstream from State dam, and 2.5 mi east of Logan.

DRAINAGE AREA.--214 mi².

WATER-DISCHARGE RECORDS

PERIOD OF RECORD.--June 1896 to current year. Published as Logan River near Logan prior to 1913. Records from May 1913 to November 1970 equivalent to earlier records, if records for Utah Power & Light Co.'s tailrace near Logan (station 10108000) are added. Monthly discharge only for some periods, published in WSP 1314.

REVISED RECORDS.--WDR UT-74-1: Drainage area. WDR UT-96-1:1995, Combined discharge of Logan River Above State Dam and Logan, Hyde Park and Smithfield Canal at Head. WDR UT-04-1:1995, Logan River above State Dam, near Logan, Ut; Combined discharge of Logan River above State Dam and Logan, Hyde Park and Smithfield Canal at Head.

GAGE.--Water-stage recorder. Elevation of gage is 4,680 ft above NGVD of 1929, from topographic map. Prior to May 7, 1913, nonrecording gage at various sites within 0.5 mi downstream at different datums. May 7, 1913, to September 3, 1938, water-stage recorder at present site at different datums.

REMARKS.--Records good except for estimated daily discharges, which are fair. Flow affected by regulation and diversions above station for power, irrigation, and municipal culinary supply. Utah Power and Light Co. stopped diverting water from river November 1970 at which time the tailrace station (station 10108000) was discontinued. During 1963, site for gaging station for Logan, Hyde Park and Smithfield Canal (station 10108400) was relocated. Records for combined flow since that time are equivalent to previous records. For record of combined flow, see following page.

AVERAGE DISCHARGE.--River only: 92 years (water years 1914-2005), 156 ft³/s 113,200 acre-ft/yr. Combined river and canal: 108 years, 268 ft³/s 194,300 acre-ft/yr.

EXTREMES FOR PERIOD OF RECORD.--River only: Maximum discharge, 2,000 ft³/s, Mar 21, 1916, gage height, 5.6 ft; minimum, 5.2 ft³/s, Feb 26, 1986, result of hydro-electric plant testing. Combined river and canal: Maximum discharge observed, 2,480 ft³/s, May 24, 1907; minimum daily, 50 ft³/s, Jan 21, 1935.

EXTREMES FOR CURRENT YEAR.--Maximum discharge, 1,260 ft³/s, May 24, 25, gage height, 4.89 ft; minimum daily discharge, 69 ft³/s, Dec 23. Combined river and canal: Maximum daily discharge 1250 ft³/s, May 25; minimum daily discharge 71 ft³/s, Jan 14.

10109000 LOGAN RIVER ABOVE STATE DAM, NEAR LOGAN, UT—Continued

DISCHARGE, CUBIC FEET PER SECOND
WATER YEAR OCTOBER 2004 TO SEPTEMBER 2005
DAILY MEAN VALUES

[e, estimated]

Day	Oct	Nov	Dec	Jan	Feb	Mar	Apr	May	Jun	Jul	Aug	Sep
1	77	96	86	85	81	e78	118	518	1,090	619	240	167
2	75	93	83	83	79	e78	121	477	1,090	601	232	166
3	74	92	79	83	79	e80	129	459	1,010	588	223	164
4	73	96	78	81	78	e80	142	459	930	569	215	163
5	74	98	84	79	78	e82	140	476	892	538	210	162
6	73	97	81	80	77	e82	145	555	936	516	206	160
7	72	93	80	77	80	e83	165	618	923	501	202	159
8	71	91	83	79	74	e87	209	582	834	469	200	158
9	71	91	95	84	77	e90	207	616	759	452	197	159
10	72	92	92	86	74	e98	192	692	718	441	195	158
11	72	93	90	82	72	111	190	667	687	424	192	157
12	71	95	87	75	75	118	204	592	696	407	188	158
13	71	94	86	73	74	126	251	553	668	394	186	156
14	71	93	84	71	77	122	275	568	662	378	185	153
15	72	90	84	72	77	118	246	630	701	359	191	151
16	72	88	84	74	e75	115	253	742	773	354	190	148
17	71	89	82	75	e75	113	287	824	822	342	191	150
18	84	88	80	74	e75	111	313	731	847	323	191	149
19	88	88	79	75	e75	110	289	742	853	309	187	146
20	112	88	78	76	e75	117	296	938	846	300	184	144
21	109	88	75	78	e76	114	271	1,070	850	290	181	143
22	98	87	73	78	e76	112	257	1,110	852	282	182	140
23	94	87	69	79	e76	119	264	1,130	850	274	180	139
24	99	86	70	79	e76	127	296	1,210	836	267	175	138
25	95	86	75	79	e76	119	455	1,230	804	261	173	137
26	94	87	77	81	e76	114	415	1,170	773	256	171	135
27	92	87	78	84	e78	113	455	1,120	743	250	168	135
28	97	84	79	83	e77	122	956	1,080	704	244	167	139
29	101	82	82	82	---	124	752	1,090	691	245	165	140
30	98	75	84	82	---	122	614	1,100	650	248	164	138
31	100	---	86	81	---	118	---	1,090	---	243	163	---
Total	2,593	2,694	2,523	2,450	2,138	3,303	8,907	24,839	24,490	11,744	5,894	4,512
Mean	83.6	89.8	81.4	79.0	76.4	107	297	801	816	379	190	150
Max	112	98	95	86	81	127	956	1,230	1,090	619	240	167
Min	71	75	69	71	72	78	118	459	650	243	163	135
Ac-ft	5,140	5,340	5,000	4,860	4,240	6,550	17,670	49,270	48,580	23,290	11,690	8,950

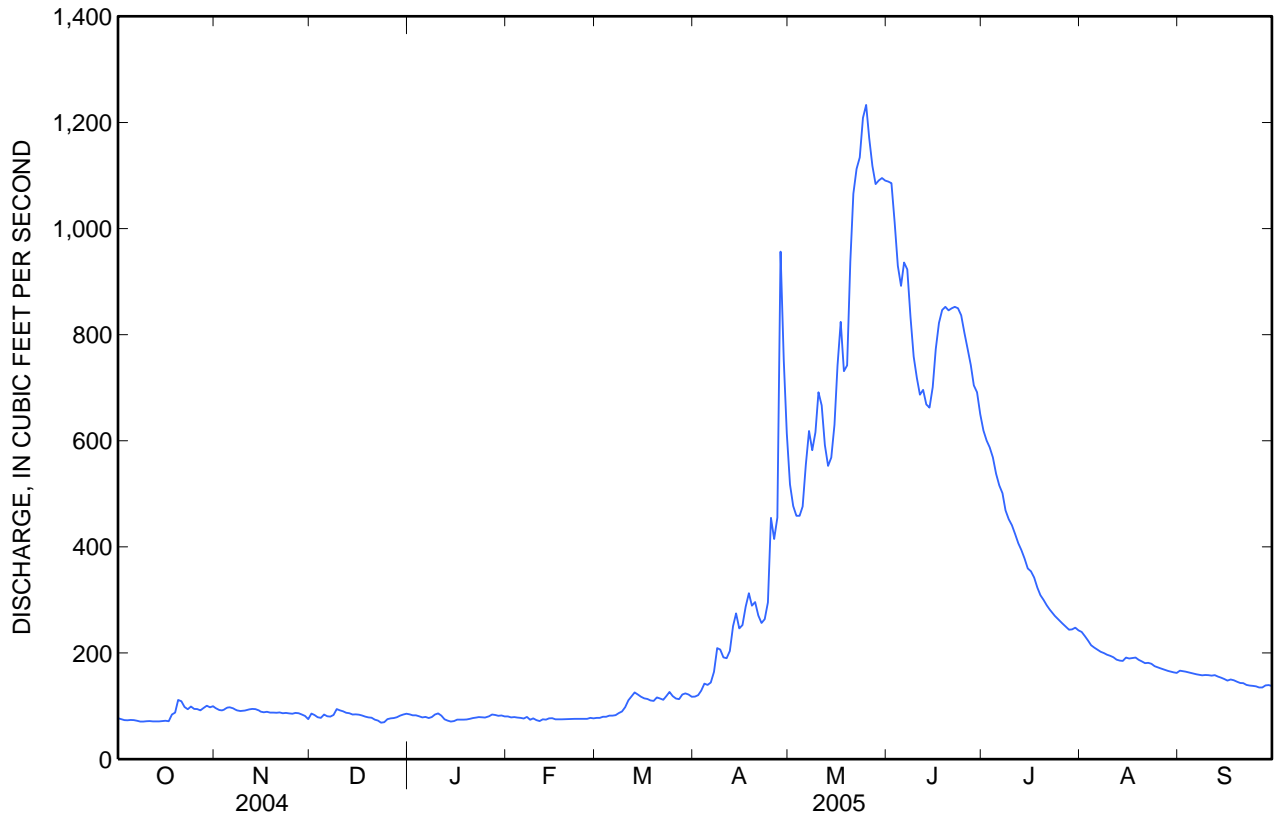
STATISTICS OF MONTHLY MEAN DATA FOR WATER YEARS 1971 - 2005, BY WATER YEAR (WY)

	Oct	Nov	Dec	Jan	Feb	Mar	Apr	May	Jun	Jul	Aug	Sep
Mean	135	129	115	108	107	134	250	561	651	317	176	144
Max	247	213	186	161	205	369	615	1,072	1,413	691	337	267
(WY)	(1984)	(1984)	(1984)	(1985)	(1986)	(1986)	(1986)	(1997)	(1986)	(1984)	(1983)	(1986)
Min	67.4	71.9	69.0	63.1	61.6	78.9	109	131	113	77.9	63.6	61.1
(WY)	(1978)	(1993)	(1993)	(1993)	(1993)	(1991)	(1977)	(1977)	(1992)	(1992)	(1992)	(1992)

10109000 LOGAN RIVER ABOVE STATE DAM, NEAR LOGAN, UT—Continued

SUMMARY STATISTICS

	Calendar Year 2004		Water Year 2005		Water Years 1971 - 2005	
Annual total	49,890		96,087			
Annual mean	136		263		236	
Highest annual mean					440	1986
Lowest annual mean					99.6	1992
Highest daily mean	529	May 29	1,230	May 25	1,870	Jun 6, 1986
Lowest daily mean	61	Feb 12	69	Dec 23	55	Jan 21, 1991
Annual seven-day minimum	70	Feb 8	71	Oct 8	58	Sep 24, 1992
Annual runoff (ac-ft)	98,960		190,600		171,000	
10 percent exceeds	265		742		541	
50 percent exceeds	93		126		143	
90 percent exceeds	74		75		83	





Water-Data Report UT-2005

10109001 COMBINED DISCHARGE, IN CUBIC FEET PER SECOND, OF LOGAN RIVER ABOVE STATE DAM AND LOGAN, HYDE PARK AND SMITHFIELD CANAL AT HEAD, NEAR LOGAN, UT

Bear River Basin

WATER-DISCHARGE RECORDS

REVISED RECORDS.--WDR UT-04-1: Discharge.

**DISCHARGE, CUBIC FEET PER SECOND
WATER YEAR OCTOBER 2004 TO SEPTEMBER 2005
DAILY MEAN VALUES
[e, estimated]**

Day	Oct	Nov	Dec	Jan	Feb	Mar	Apr	May	Jun	Jul	Aug	Sep
1	102	105	90	87	81	e78	118	518	1,130	656	293	214
2	100	102	86	85	79	e78	121	477	1,120	638	292	211
3	99	101	82	86	79	e80	129	459	1,040	625	286	209
4	98	100	82	84	78	e80	142	459	962	605	279	208
5	99	98	88	e82	78	e82	140	476	925	574	274	207
6	98	97	84	e83	77	e82	145	555	953	551	269	205
7	97	98	83	e80	80	e83	165	618	940	538	265	204
8	96	99	86	e82	74	e87	209	582	861	520	264	203
9	96	99	98	e87	77	e90	207	616	792	503	261	204
10	97	99	94	86	74	e98	192	692	751	491	260	203
11	97	100	93	82	72	111	190	667	719	473	256	202
12	96	102	90	75	75	118	204	592	728	455	253	203
13	96	101	89	73	74	126	251	553	698	441	251	201
14	96	100	86	71	77	122	275	568	692	426	248	198
15	97	97	87	72	77	118	246	630	734	419	245	196
16	97	95	87	74	e75	115	253	742	812	407	243	192
17	97	96	85	75	e75	113	287	824	862	393	244	194
18	110	95	83	74	e75	111	313	731	887	383	245	193
19	107	95	82	75	e75	110	289	742	893	373	240	190
20	127	95	81	76	e75	117	296	938	886	364	237	188
21	121	95	78	78	e76	114	271	1,080	890	354	234	188
22	108	94	76	78	e76	112	257	1,110	892	347	235	185
23	104	94	72	79	e76	119	264	1,140	890	341	234	183
24	109	93	73	79	e76	127	296	1,240	876	333	230	183
25	105	93	78	79	e76	119	455	1,250	844	327	227	182
26	103	91	80	81	e76	114	415	1,190	812	321	224	180
27	101	88	81	84	e78	113	455	1,150	782	315	222	180
28	106	88	82	83	e77	122	956	1,110	742	309	221	177
29	110	86	84	82	---	124	752	1,120	729	308	219	175
30	107	79	86	82	---	122	614	1,130	688	301	218	174
31	109	---	88	81	---	118	---	1,130	---	296	217	---
Total	3,185	2,875	2,614	2,475	2,138	3,303	8,907	25,089	25,530	13,387	7,686	5,832
Mean	103	95.8	84.3	79.8	76.4	107	297	809	851	432	248	194
Max	127	105	98	87	81	127	956	1,250	1,130	656	293	214
Min	96	79	72	71	72	78	118	459	688	296	217	174
Ac-ft	6,320	5,700	5,180	4,910	4,240	6,550	17,670	49,760	50,640	26,550	15,250	11,570



10113500 BLACKSMITH FORK ABOVE UTAH POWER AND LIGHT CO.'S DAM, NEAR HYRUM, UT

Bear River Basin

LOCATION.--Lat 41°37'25", long 111°44'17" referenced to North American Datum of 1927, in SE ¼ NE ¼ NE ¼ sec.8, T.10 N., R.2 E., Cache County, Hydrologic Unit 16010203, on right bank 1.1 mi upstream from diversion dam, and 6 mi east of Hyrum.

DRAINAGE AREA.--263 mi².

WATER-DISCHARGE RECORDS

PERIOD OF RECORD.--October 1913 to September 1996, March 2000 to current year. Monthly discharge only for October 1913, published in WSP 1314.

REVISED RECORDS.--WSP 1514: 1925. WDR UT-74-1: Drainage area.

GAGE.--Water-stage recorder. Crest-stage gage since March 2000. Elevation of gage is 5,020 ft above NGVD of 1929, from topographic map. October 2, 1934 to May 27, 1987 at site 1,200 ft downstream at different datum. Prior to Oct 2, 1934, at site 200 ft downstream at different datum.

REMARKS.--Records good except for estimated daily discharges, which are fair. A few small diversions for irrigation of about 200 acres above station. Flow is slightly regulated by powerplant above station.

EXTREMES FOR PERIOD OF RECORD.--Maximum discharge, 1,650 ft³/s, May 14, 1984, gage height, 7.12 ft, site and datum then in use; minimum, 4.7 ft³/s, Nov 28, 1979.

EXTREMES FOR CURRENT YEAR.--Peak discharges greater than base discharge of 140 ft³/s and (or) maximum (*):

Date	Time	Discharge (ft ³ /s)	Gage height (ft)
Apr 28	1730	*1,570	*8.14

Minimum daily discharge, 42 ft³/s, Dec 3, 7.

10113500 BLACKSMITH FORK ABOVE UTAH POWER AND LIGHT CO.'S DAM, NEAR HYRUM, UT—Continued

DISCHARGE, CUBIC FEET PER SECOND
WATER YEAR OCTOBER 2004 TO SEPTEMBER 2005
DAILY MEAN VALUES

[e, estimated]

Day	Oct	Nov	Dec	Jan	Feb	Mar	Apr	May	Jun	Jul	Aug	Sep
1	45	51	e44	49	60	63	95	436	252	146	104	104
2	45	50	43	48	57	64	100	401	242	144	105	105
3	45	51	42	47	57	65	113	381	228	142	106	105
4	47	51	43	48	58	66	125	374	220	141	105	102
5	44	49	43	46	59	67	115	388	211	140	104	100
6	44	49	43	47	58	69	118	425	208	139	104	96
7	44	48	42	47	59	71	138	418	217	138	104	91
8	44	48	48	49	57	74	186	382	213	137	103	90
9	44	47	55	52	57	80	173	383	201	136	103	90
10	43	48	53	56	55	88	156	426	191	134	103	90
11	44	48	53	57	56	96	154	442	186	130	102	90
12	44	49	54	53	58	106	160	376	196	128	102	91
13	44	48	54	50	57	114	189	344	188	124	101	91
14	44	46	53	49	62	96	230	336	181	125	101	91
15	44	47	53	49	59	91	225	337	179	125	100	90
16	45	47	51	51	55	89	236	358	175	124	99	90
17	45	46	50	53	54	89	274	375	170	120	101	89
18	49	46	49	53	57	85	299	343	167	122	101	89
19	49	45	49	54	61	87	258	327	164	124	100	88
20	62	45	50	55	62	102	252	350	162	120	99	88
21	57	45	49	57	61	96	223	364	159	119	99	88
22	51	45	48	57	61	94	213	353	158	122	100	89
23	50	46	44	57	62	102	242	345	156	123	99	89
24	55	45	45	57	62	113	288	339	155	105	98	88
25	51	47	46	56	62	102	404	321	152	101	97	88
26	54	47	47	58	62	93	393	301	150	103	96	88
27	53	47	48	61	62	94	409	285	147	108	96	88
28	53	47	48	60	63	111	976	275	144	108	95	88
29	53	43	50	60	---	110	725	267	150	105	95	87
30	52	e44	50	60	---	102	522	268	148	105	102	88
31	52	---	51	59	---	96	---	255	---	107	104	---
Total	1,496	1,415	1,498	1,655	1,653	2,775	7,991	10,975	5,470	3,845	3,128	2,751
Mean	48.3	47.2	48.3	53.4	59.0	89.5	266	354	182	124	101	91.7
Max	62	51	55	61	63	114	976	442	252	146	106	105
Min	43	43	42	46	54	63	95	255	144	101	95	87
Ac-ft	2,970	2,810	2,970	3,280	3,280	5,500	15,850	21,770	10,850	7,630	6,200	5,460

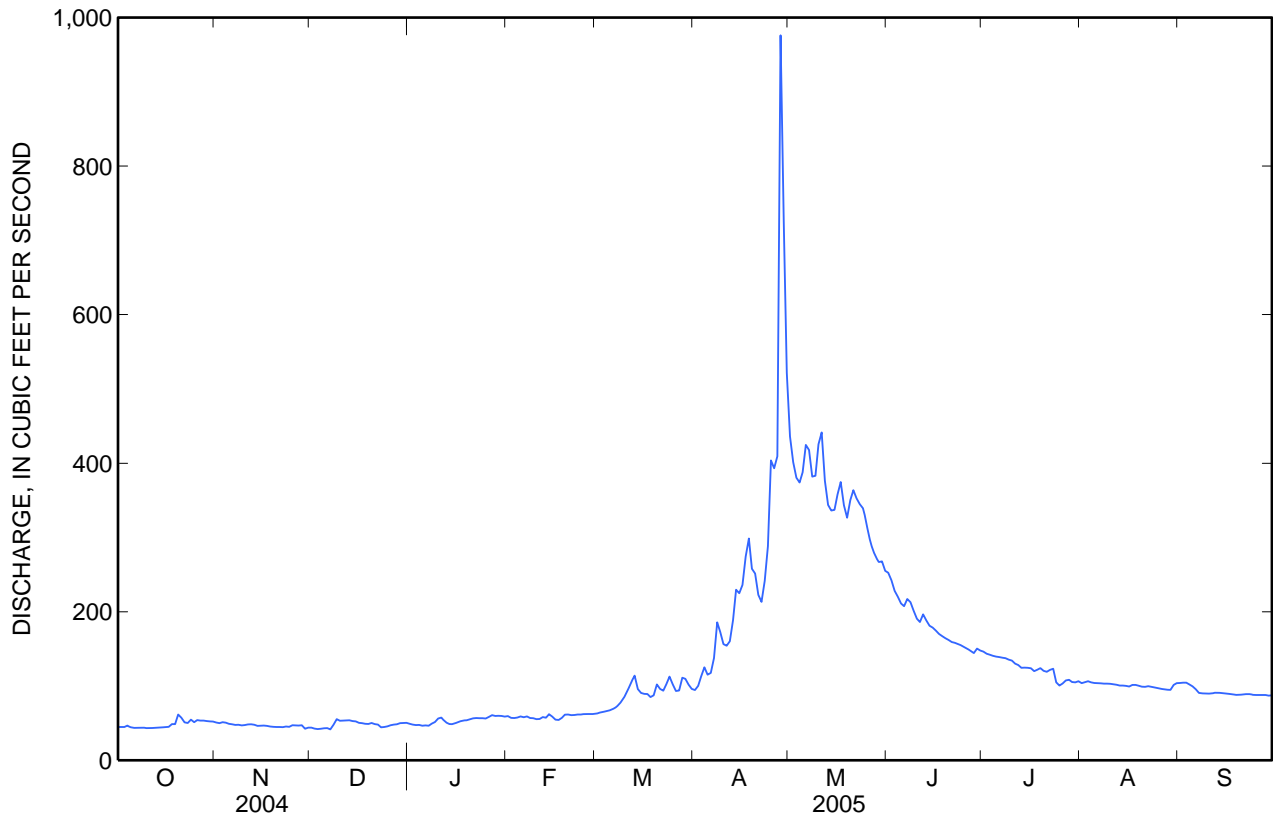
STATISTICS OF MONTHLY MEAN DATA FOR WATER YEARS 1915-17, 1919-96, 2001-05, BY WATER YEAR (WY)

	Oct	Nov	Dec	Jan	Feb	Mar	Apr	May	Jun	Jul	Aug	Sep
Mean	91.0	85.7	80.9	77.4	80.1	102	211	289	168	120	105	94.9
Max	192	174	159	148	269	356	566	940	494	284	239	209
(WY)	(1985)	(1985)	(1984)	(1984)	(1986)	(1986)	(1946)	(1984)	(1984)	(1984)	(1984)	(1984)
Min	42.6	41.2	40.7	42.5	43.5	47.3	63.9	58.6	49.7	45.1	40.9	40.2
(WY)	(1993)	(1993)	(1991)	(2004)	(1942)	(1942)	(1931)	(1934)	(1992)	(1992)	(1992)	(1992)

10113500 BLACKSMITH FORK ABOVE UTAH POWER AND LIGHT CO.'S DAM, NEAR HYRUM, UT—Continued

SUMMARY STATISTICS

	Calendar Year 2004		Water Year 2005		Water Years 1915-17, 1919-96, 2001-05	
Annual total	21,215		44,652			
Annual mean	58.0		122		126	
Highest annual mean					295	1984
Lowest annual mean					53.0	1941
Highest daily mean	140	Apr 8	976	Apr 28	1,530	May 15, 1984
Lowest daily mean	38	Jan 6	42	Dec 3	26	Dec 23, 1990
Annual seven-day minimum	40	Jan 3	43	Dec 1	35	Dec 19, 1990
Annual runoff (ac-ft)	42,080		88,570		91,130	
10 percent exceeds	87		274		224	
50 percent exceeds	49		90		94	
90 percent exceeds	43		46		55	



10113500 BLACKSMITH FORK ABOVE UTAH POWER AND LIGHT CO.'S DAM, NEAR HYRUM, UT—Continued**CLIMATOLOGICAL RECORDS**

PERIOD OF RECORD.--October 2001 to current year.

INSTRUMENTATION.--An 8.2-inch diameter, unheated, tipping bucket rain gage.

REMARKS.--Records good. Snowfall-affected data can result during the winter months when snow fills the rain gage bucket and then melts as temperatures rise. Snowfall-affected data is subject to appreciable errors.

EXTREMES FOR PERIOD OF RECORD.--Maximum daily precipitation, 4.74 in., Oct 20, 2004.

EXTREMES FOR CURRENT YEAR.--Maximum daily precipitation, 4.74 in., Oct 20.

PRECIPITATION, TOTAL, INCHES
WATER YEAR OCTOBER 2004 TO SEPTEMBER 2005
DAILY SUM VALUES
[e, estimated]

Day	Oct	Nov	Dec	Jan	Feb	Mar	Apr	May	Jun	Jul	Aug	Sep
1	0.00	0.06	e0.00	0.00	0.00	0.00	0.00	0.00	0.71	0.00	0.00	0.00
2	0.00	0.06	0.00	0.03	0.00	0.00	0.00	0.00	0.00	0.00	0.50	0.00
3	0.00	0.02	0.00	0.00	0.00	0.00	0.00	0.03	0.00	0.00	0.00	0.00
4	0.00	0.00	0.00	0.00	0.01	0.00	0.34	0.00	0.00	0.00	0.00	0.01
5	0.00	0.00	0.00	0.00	0.00	0.00	0.00	0.02	0.00	0.00	0.00	0.00
6	0.00	0.00	0.00	0.00	0.00	0.00	0.00	0.48	0.28	0.00	0.00	0.00
7	0.00	0.00	0.09	0.00	0.00	0.00	0.00	0.24	1.20	0.00	0.00	0.00
8	0.00	0.00	1.59	0.59	0.00	0.00	0.41	0.00	0.17	0.00	0.00	0.00
9	0.00	0.00	0.26	0.39	0.06	0.00	0.07	0.79	0.01	0.00	0.00	0.00
10	0.00	0.00	0.01	0.53	0.00	0.00	0.00	0.61	0.00	0.00	0.00	0.00
11	0.00	0.89	0.01	0.08	0.23	0.00	0.00	0.63	0.51	0.00	0.01	0.00
12	0.00	0.01	0.00	0.00	0.31	0.00	0.00	0.07	0.88	0.00	0.00	0.25
13	0.00	0.00	0.00	0.00	0.02	0.00	0.00	0.00	0.00	0.00	0.00	0.00
14	0.00	0.00	0.00	0.00	0.26	0.00	0.00	0.00	0.00	0.00	0.00	0.00
15	0.00	0.00	0.00	0.00	0.00	0.00	0.00	0.01	0.00	0.00	0.00	0.00
16	0.00	0.00	0.00	0.00	0.00	0.00	0.00	0.49	0.00	0.00	0.27	0.00
17	0.01	0.00	0.00	0.00	0.00	0.00	0.00	0.41	0.00	0.00	0.03	0.02
18	0.87	0.00	0.00	0.01	0.00	0.00	0.07	0.00	0.00	0.00	0.01	0.00
19	1.15	0.00	0.00	0.41	0.98	0.10	0.64	0.00	0.00	0.00	0.00	0.00
20	4.74	0.00	0.00	0.14	0.44	0.57	0.76	0.00	0.00	0.00	0.00	0.00
21	0.79	0.00	0.00	0.01	0.02	0.08	0.18	0.00	0.00	0.00	0.00	0.18
22	0.00	0.00	0.00	0.00	0.00	0.31	0.00	0.00	0.00	0.00	0.00	0.02
23	1.24	0.00	0.00	0.00	0.00	1.04	0.00	0.00	0.00	0.00	0.00	0.06
24	0.00	0.00	0.00	0.00	0.00	0.30	0.89	0.00	0.00	0.00	0.00	0.00
25	0.29	0.34	0.00	0.00	0.00	0.03	0.55	0.00	0.09	0.00	0.00	0.00
26	1.41	0.00	0.00	0.00	0.00	0.00	0.00	0.00	0.00	0.00	0.00	0.00
27	0.05	0.00	0.00	0.00	0.00	0.00	0.48	0.00	0.00	0.00	0.00	0.00
28	0.42	0.00	0.00	0.20	0.00	1.61	3.04	0.00	0.09	0.00	0.00	0.00
29	0.34	0.00	0.71	0.27	---	0.04	0.01	0.10	0.01	0.00	0.00	0.00
30	0.11	e0.00	0.05	0.05	---	0.07	0.22	0.77	0.00	0.00	0.00	0.00
31	0.16	---	0.72	0.00	---	0.21	---	0.02	---	0.00	0.00	---
Total	11.58	1.38	3.44	2.71	2.33	4.36	7.66	4.67	3.95	0.00	0.82	0.54

WATER YEAR 2005 TOTAL 43.44



Water-Data Report UT-2005

10116500 CUTLER RESERVOIR NEAR COLLINSTON, UT

Bear River Basin

LOCATION.--Lat 41°50'13", long 112°02'51" referenced to North American Datum of 1927, in NW ¼ NW ¼ SW ¼ sec.26, T.13 N., R.2 W., Box Elder County, Hydrologic Unit 16010202, 2 mi north of Beaver Dam, 6 mi north of Collinston.

DRAINAGE AREA.--6,265 mi².

RESERVOIR-CONTENTS RECORDS

PERIOD OF RECORD.--October 1927 to current year.

GAGE.--Elevation of gage is 4,000 ft, PacifiCorp datum.

COOPERATION.--Records provided by PacifiCorp, under general supervision of Geological Survey, in connection with a Federal Energy Regulatory Commission project.

REMARKS.--Records fair. New capacity table being used from October 1, 1992.

EXTREMES FOR CURRENT YEAR.--Maximum contents, 17,250 acre-ft Aug 1, elevation 4407.75 ft; minimum contents 3,037 acre-ft May 4, elevation 4405.02 ft.

10116500 CUTLER RESERVOIR NEAR COLLINSTON, UT—Continued

RESERVOIR STORAGE, ACRE FEET
WATER YEAR OCTOBER 2004 TO SEPTEMBER 2005
DAILY INSTANTANEOUS VALUES

Day	Oct	Nov	Dec	Jan	Feb	Mar	Apr	May	Jun	Jul	Aug	Sep
1	14,600	14,670	11,090	12,260	11,350	11,220	10,780	8,856	10,840	10,650	17,250	13,200
2	14,740	12,390	10,290	11,220	11,280	11,160	10,970	7,425	11,030	10,840	15,970	13,140
3	13,960	11,280	12,000	11,480	10,840	10,970	12,800	4,749	10,780	11,860	14,740	12,860
4	13,820	11,410	12,460	12,260	10,110	11,730	10,970	3,037	9,020	11,280	14,810	12,860
5	10,900	11,280	12,060	10,970	9,930	9,812	10,780	4,131	8,965	11,090	14,600	12,190
6	11,600	11,280	12,330	10,590	9,354	10,590	10,110	6,287	9,930	10,970	14,100	11,540
7	11,930	11,600	12,730	10,110	9,754	10,900	10,410	8,170	11,600	11,160	13,550	11,160
8	12,000	11,030	13,270	10,650	11,670	11,410	13,200	8,694	10,650	11,670	13,070	11,090
9	11,480	10,720	14,170	11,670	10,840	11,600	12,060	9,639	11,480	12,000	12,190	9,871
10	11,220	12,530	13,620	11,600	11,730	11,730	11,480	8,965	10,720	13,000	11,160	9,581
11	10,840	11,480	13,000	12,130	10,170	13,270	11,350	9,930	9,754	13,340	9,989	10,230
12	10,650	11,670	13,070	12,930	10,170	12,660	10,650	9,871	9,581	10,720	9,130	11,220
13	10,470	12,130	12,660	12,000	11,160	10,530	11,220	7,668	10,410	10,230	8,910	11,670
14	10,650	12,390	11,410	9,524	11,800	11,410	11,480	8,377	11,090	10,720	8,965	12,590
15	10,590	12,590	11,090	11,280	11,160	9,186	10,840	6,201	11,220	10,780	9,812	13,480
16	10,470	11,670	11,090	10,290	11,670	11,860	10,230	7,094	9,696	10,900	10,650	13,960
17	10,110	11,860	11,540	10,110	10,530	11,410	11,480	7,001	10,410	10,720	11,930	15,680
18	11,220	12,000	11,540	9,812	10,410	12,260	12,930	6,244	10,530	10,230	13,480	14,520
19	12,330	12,800	11,540	10,840	12,460	14,100	12,660	5,703	10,230	10,050	14,880	12,800
20	15,530	12,860	12,000	10,720	11,220	12,390	11,670	7,187	10,050	9,930	16,570	12,390
21	13,480	12,530	12,660	10,290	11,930	11,860	11,350	8,377	10,650	9,639	17,100	13,200
22	12,190	11,860	12,800	11,030	9,467	11,730	10,840	8,641	9,989	10,110	15,310	13,140
23	10,350	11,670	12,330	11,600	10,050	11,280	10,350	9,297	10,720	10,230	15,900	14,740
24	12,730	11,930	11,410	10,970	9,930	12,060	13,270	8,694	12,860	11,030	16,120	14,100
25	13,000	11,800	11,220	10,720	9,812	10,290	13,820	9,020	10,110	11,930	16,570	13,410
26	12,330	11,860	12,000	10,840	11,350	9,524	15,100	9,186	9,696	13,000	16,720	12,460
27	11,860	12,190	11,860	11,090	11,410	12,000	15,970	9,639	10,900	14,100	16,720	14,100
28	13,070	12,000	12,590	11,670	11,670	11,600	15,380	7,329	10,780	14,810	15,680	13,480
29	13,200	11,280	13,270	10,970	---	10,350	8,856	9,130	10,230	15,310	15,600	11,220
30	13,200	11,160	12,460	11,410	---	10,590	8,748	10,230	10,590	16,040	14,670	12,590
31	12,530	---	11,090	10,900	---	10,650	---	10,410	---	16,340	13,760	---
Max	15,530	14,670	14,170	12,930	12,460	14,100	15,970	10,410	12,860	16,340	17,250	15,680
Min	10,110	10,720	10,290	9,524	9,354	9,186	8,748	3,037	8,965	9,639	8,910	9,581
(#)	4,407.09	4,406.88	4,406.87	4,406.84	4,406.96	4,406.80	4,406.47	4,406.76	4,406.79	4,407.63	4,407.27	4,407.10
(*)	-2,140	-1,370	-70	-190	+770	-1,020	-1,902	+1,662	+180	+5,750	-2,580	-1,170

CAL YR 2004.....(*) +120

WTR YR 2005.....(*) -2,080

(#) Elevation, in feet, at end of month

(*) Change in contents, in acre-feet

10117000 HAMMOND (EAST SIDE) CANAL NEAR COLLINSTON, UT

Bear River Basin

LOCATION.--Lat 41°49'51", long 112°03'24" referenced to North American Datum of 1927, in SE ¼ sec.27, T.13 N., R.2 W., Box Elder County, Hydrologic Unit 16010204, on right bank 3,600 ft downstream from Cutler Dam and 4 mi north of Collinston.

WATER-DISCHARGE RECORDS

PERIOD OF RECORD.--June 1912 to current year. Prior to 1915, published as Hammond Ditch near Collingston. Monthly discharge only for some periods, published in WSP 1314.

GAGE.--Water-stage recorder. Prior to May 22, 1914, nonrecording gage at same site and datum.

COOPERATION.--Records collected by PacifiCorp.

REMARKS.--Records good. Canal diverts from east side of Bear River at Cutler Dam for irrigation of about 58,000 acres below station in eastern Box Elder County.

AVERAGE DISCHARGE FOR PERIOD OF RECORD.--91 years (water years 1913-81, 1983-2005), 53.3 ft³/s, 38,600 acre-ft/yr.

EXTREMES FOR PERIOD OF RECORD.--Maximum daily discharge, 184 ft³/s, Jun 29, 1963, May 2, 1977; no flow at times in each year.

10117000 HAMMOND (EAST SIDE) CANAL NEAR COLLINSTON, UT—Continued

DISCHARGE, CUBIC FEET PER SECOND
WATER YEAR OCTOBER 2004 TO SEPTEMBER 2005
DAILY MEAN VALUES

Day	Oct	Nov	Dec	Jan	Feb	Mar	Apr	May	Jun	Jul	Aug	Sep
1	67	0.00	0.00	0.00	0.00	0.00	0.00	0.00	116	176	171	158
2	68	0.00	0.00	0.00	0.00	0.00	0.00	0.00	116	175	170	161
3	67	0.00	0.00	0.00	0.00	0.00	0.00	0.00	117	177	155	161
4	67	0.00	0.00	0.00	0.00	0.00	0.00	0.00	128	177	154	161
5	67	0.00	0.00	0.00	0.00	0.00	0.00	0.00	128	178	155	160
6	66	0.00	0.00	0.00	0.00	0.00	0.00	0.00	132	178	156	155
7	66	0.00	0.00	0.00	0.00	0.00	0.00	0.00	132	178	155	145
8	66	0.00	0.00	0.00	0.00	0.00	0.00	0.00	133	178	155	144
9	66	0.00	0.00	0.00	0.00	0.00	0.00	0.00	134	178	154	143
10	66	0.00	0.00	0.00	0.00	0.00	0.00	0.00	133	178	154	142
11	66	0.00	0.00	0.00	0.00	0.00	0.00	0.00	133	179	154	143
12	66	0.00	0.00	0.00	0.00	0.00	0.00	0.00	133	181	155	143
13	66	0.00	0.00	0.00	0.00	0.00	0.00	0.00	135	181	156	126
14	66	0.00	0.00	0.00	0.00	0.00	0.00	0.00	134	179	155	127
15	66	0.00	0.00	0.00	0.00	0.00	0.00	0.00	134	179	154	128
16	66	0.00	0.00	0.00	0.00	0.00	0.00	0.00	135	180	148	126
17	66	0.00	0.00	0.00	0.00	0.00	0.00	0.00	142	181	149	126
18	62	0.00	0.00	0.00	0.00	0.00	0.00	0.00	153	181	149	114
19	59	0.00	0.00	0.00	0.00	0.00	0.00	0.00	154	181	149	113
20	55	0.00	0.00	0.00	0.00	0.00	0.00	0.00	158	181	149	112
21	55	0.00	0.00	0.00	0.00	0.00	0.00	0.00	158	178	149	112
22	49	0.00	0.00	0.00	0.00	0.00	0.00	0.00	157	172	147	97
23	36	0.00	0.00	0.00	0.00	0.00	0.00	0.00	164	172	147	97
24	36	0.00	0.00	0.00	0.00	0.00	0.00	0.00	172	172	145	94
25	34	0.00	0.00	0.00	0.00	0.00	0.00	0.00	173	172	145	83
26	24	0.00	0.00	0.00	0.00	0.00	0.00	0.00	173	171	150	80
27	0.00	0.00	0.00	0.00	0.00	0.00	0.00	86	174	172	162	79
28	0.00	0.00	0.00	0.00	0.00	0.00	0.00	84	174	173	160	81
29	0.00	0.00	0.00	0.00	---	0.00	0.00	89	175	172	146	81
30	0.00	0.00	0.00	0.00	---	0.00	0.00	113	176	171	145	80
31	0.00	---	0.00	0.00	---	0.00	---	115	---	171	144	---
Total	1,538.00	0.00	0.00	0.00	0.00	0.00	0.00	487.00	4,376	5,472	4,737	3,672
Mean	49.6	0.00	0.00	0.00	0.00	0.00	0.00	15.7	146	177	153	122
Max	68	0.00	0.00	0.00	0.00	0.00	0.00	115	176	181	171	161
Min	0.00	0.00	0.00	0.00	0.00	0.00	0.00	0.00	116	171	144	79
Ac-ft	3,050	0.00	0.00	0.00	0.00	0.00	0.00	966	8,680	10,850	9,400	7,280

	Calendar Year 2004	Water Year 2005
Total	20,728.00	20,282.00
Mean	56.6	55.6
Max	151	181
Min	0.00	0.00
Ac-ft	41,110	40,230



Water-Data Report UT-2005

10117500 WEST SIDE CANAL NEAR COLLINSTON, UT

Bear River Basin

LOCATION.--Lat 41°49'55", long 112°03'36" referenced to North American Datum of 1927, in SW ¼ sec.27, T.13 N., R.2 W., Box Elder County, Hydrologic Unit 16010204, on left bank 4,200 ft downstream from Cutler Dam and 4 mi north of Collinston.

WATER-DISCHARGE RECORDS

PERIOD OF RECORD.--June 1912 to current year. Monthly discharge only for some periods, published in WSP 1314.

GAGE.--Water-stage recorder. Prior to May 22, 1914, nonrecording gage at same site and datum.

COOPERATION.--Records collected by PacifiCorp.

REMARKS.--Records good. Canal diverts from west side of Bear River at Cutler Dam for irrigation of about 58,000 acres below station in eastern Box Elder County.

AVERAGE DISCHARGE FOR PERIOD OF RECORD.--91 years (water years 1913-81, 1983-2005), 255 ft³/s, 184,300 acre-ft/yr.

EXTREMES FOR PERIOD OF RECORD.--Maximum daily discharge, 787 ft³/s, Jun 23, 1986; no flow for periods in every year except 1914.

10117500 WEST SIDE CANAL NEAR COLLINSTON, UT—Continued

DISCHARGE, CUBIC FEET PER SECOND
 WATER YEAR OCTOBER 2004 TO SEPTEMBER 2005
 DAILY MEAN VALUES

Day	Oct	Nov	Dec	Jan	Feb	Mar	Apr	May	Jun	Jul	Aug	Sep
1	163	0.00	0.00	0.00	0.00	0.00	0.00	0.00	499	753	696	694
2	151	0.00	0.00	0.00	0.00	0.00	0.00	0.00	507	757	695	694
3	151	0.00	0.00	0.00	0.00	0.00	0.00	0.00	511	761	689	693
4	155	0.00	0.00	0.00	0.00	0.00	0.00	0.00	545	758	639	694
5	155	0.00	0.00	0.00	0.00	0.00	0.00	0.00	552	749	649	695
6	156	0.00	0.00	0.00	0.00	0.00	0.00	0.00	524	748	649	695
7	157	0.00	0.00	0.00	0.00	0.00	0.00	0.00	449	750	647	694
8	157	0.00	0.00	0.00	0.00	0.00	0.00	0.00	446	737	651	693
9	158	0.00	0.00	0.00	0.00	0.00	0.00	0.00	445	705	650	683
10	159	0.00	0.00	0.00	0.00	0.00	0.00	0.00	449	707	651	656
11	161	0.00	0.00	0.00	0.00	0.00	0.00	0.00	452	707	649	655
12	162	0.00	0.00	0.00	0.00	0.00	0.00	0.00	453	708	648	633
13	160	0.00	0.00	0.00	0.00	0.00	0.00	0.00	459	709	650	582
14	160	0.00	0.00	0.00	0.00	0.00	0.00	0.00	460	711	647	551
15	159	0.00	0.00	0.00	0.00	0.00	0.00	0.00	494	710	646	552
16	160	0.00	0.00	0.00	0.00	0.00	0.00	0.00	552	704	647	550
17	160	0.00	0.00	0.00	0.00	0.00	0.00	0.00	552	710	647	551
18	161	0.00	0.00	0.00	0.00	0.00	0.00	0.00	556	709	646	552
19	160	0.00	0.00	0.00	0.00	0.00	0.00	0.00	636	705	644	537
20	163	0.00	0.00	0.00	0.00	0.00	0.00	0.00	664	702	645	514
21	141	0.00	0.00	0.00	0.00	0.00	0.00	0.00	668	701	646	489
22	71	0.00	0.00	0.00	0.00	0.00	0.00	0.00	683	698	648	455
23	120	0.00	0.00	0.00	0.00	0.00	0.00	0.00	705	698	653	428
24	120	0.00	0.00	0.00	0.00	0.00	0.00	0.00	713	697	685	395
25	116	0.00	0.00	0.00	0.00	0.00	0.00	280	738	696	699	393
26	104	0.00	0.00	0.00	0.00	0.00	0.00	431	748	697	697	390
27	104	0.00	0.00	0.00	0.00	0.00	0.00	417	752	693	697	385
28	105	0.00	0.00	0.00	0.00	0.00	0.00	413	753	692	694	329
29	105	0.00	0.00	0.00	---	0.00	0.00	411	752	693	696	340
30	105	0.00	0.00	0.00	---	0.00	0.00	413	750	693	698	337
31	104	---	0.00	0.00	---	0.00	---	444	---	695	697	---
Total	4,363	0.00	0.00	0.00	0.00	0.00	0.00	2,809.00	17,467	22,153	20,595	16,509
Mean	141	0.00	0.00	0.00	0.00	0.00	0.00	90.6	582	715	664	550
Max	163	0.00	0.00	0.00	0.00	0.00	0.00	444	753	761	699	695
Min	71	0.00	0.00	0.00	0.00	0.00	0.00	0.00	445	692	639	329
Ac-ft	8,650	0.00	0.00	0.00	0.00	0.00	0.00	5,570	34,650	43,940	40,850	32,750

	Calendar Year 2004	Water Year 2005
Total	83,577.00	83,896.00
Mean	228	230
Max	699	761
Min	0.00	0.00
Ac-ft	165,800	166,400

10118000 BEAR RIVER NEAR COLLINSTON, UT

Bear River Basin

LOCATION.--Lat 41°50'03", long 112°03'16" referenced to North American Datum of 1927, in NW ¼ SE ¼ sec.27, T.13 N., R.2 W., Box Elder County, Hydrologic Unit 16010204, on right bank 800 ft downstream from Cutler plant of Utah Power & Light Co., 2,000 ft downstream from Cutler Dam, and 5.5 mi north of Collinston.

DRAINAGE AREA.--6,271 mi².

WATER-DISCHARGE RECORDS

REVISED RECORDS.--WDR UT-74-1: Drainage area.

PERIOD OF RECORD.--July 1889 to current year. Published as "at Collinston" prior to 1900. Monthly discharge only for some periods, published in WSP 1314.

GAGE.--Water-stage recorder. Datum of gage is 4,276.13 ft above NGVD of 1929 (levels by Bureau of Reclamation). Prior to November 8, 1913, nonrecording gage, and November 8, 1913 to September 10, 1938, water-stage recorder, at site 0.8 mi downstream at different datums.

COOPERATION.--Records collected by PacifiCorp, under general supervision of the U. S. Geological Survey, in connection with a Federal Energy Regulatory Commission project.

REMARKS.--Records good. Natural flow of stream affected by storage reservoir, power developments and diversions for irrigation.

EXTREMES FOR PERIOD OF RECORD.--Maximum discharge, 12,700 ft³/s, Feb 20, 1986, gage height, 8.68 ft; minimum daily, 10 ft³/s, Aug 4-12, 18-23, 1905; practically no flow, Aug 5, 1920.

10118000 BEAR RIVER NEAR COLLINSTON, UT—Continued

DISCHARGE, CUBIC FEET PER SECOND
WATER YEAR OCTOBER 2004 TO SEPTEMBER 2005
DAILY MEAN VALUES

Day	Oct	Nov	Dec	Jan	Feb	Mar	Apr	May	Jun	Jul	Aug	Sep
1	32	609	640	1,270	1,160	1,130	2,760	8,050	3,900	743	34	34
2	70	1,340	654	1,450	1,110	1,030	1,960	6,960	3,890	835	34	34
3	490	1,300	516	1,010	1,260	1,030	1,750	6,020	3,960	336	501	34
4	413	759	1,060	1,030	1,090	965	1,640	5,530	3,970	111	508	34
5	800	766	632	1,010	867	855	2,520	4,800	3,950	28	149	34
6	579	764	556	1,020	870	1,310	2,940	4,560	3,920	264	35	34
7	290	731	579	1,080	1,260	1,200	2,770	3,900	3,980	27	35	34
8	320	820	641	882	1,100	1,000	2,320	3,930	3,990	28	35	34
9	434	782	813	702	622	972	2,700	4,320	4,130	29	35	34
10	480	585	1,670	1,300	1,120	1,450	3,130	4,680	4,230	30	35	34
11	331	833	1,110	1,410	877	807	3,320	5,380	4,000	30	35	34
12	343	716	738	1,600	637	1,270	3,300	5,820	3,980	31	35	34
13	338	661	1,330	1,280	793	2,210	2,980	5,900	3,860	47	35	34
14	300	723	1,580	1,220	1,270	2,580	2,750	5,880	3,680	824	35	33
15	361	889	1,250	1,110	1,180	2,220	2,560	5,700	3,360	30	35	32
16	309	1,000	1,400	854	1,130	2,640	2,670	5,080	3,150	31	35	32
17	403	672	1,410	1,440	935	2,060	2,590	5,460	3,150	31	35	32
18	330	668	1,360	1,280	1,150	2,660	2,400	5,110	3,100	32	34	231
19	316	451	1,410	1,200	768	2,890	2,600	5,280	2,930	31	34	894
20	286	657	1,420	934	667	2,720	3,000	5,230	2,800	31	34	636
21	1,950	544	874	1,160	1,320	3,570	3,160	5,050	2,610	33	34	754
22	1,550	952	750	996	1,270	4,040	3,110	4,990	2,450	36	34	50
23	1,530	764	821	631	1,420	3,670	3,030	5,200	1,850	36	293	361
24	868	638	962	1,370	1,090	3,740	2,840	5,350	1,850	35	534	166
25	886	665	817	1,270	1,050	3,820	2,950	5,270	1,400	35	35	343
26	1,400	642	750	906	883	3,470	3,410	5,050	1,880	35	34	1,030
27	956	651	788	1,060	527	3,070	3,930	5,040	1,360	34	35	495
28	627	677	761	1,040	1,240	2,070	4,690	4,740	1,500	34	34	323
29	823	691	734	1,320	---	2,290	6,480	4,580	914	34	34	608
30	777	445	971	720	---	2,060	7,620	4,380	745	34	34	841
31	849	---	860	1,260	---	2,590	---	4,120	---	32	34	---
Total	19,441	22,395	29,857	34,815	28,666	67,389	93,880	161,360	90,489	3,927	2,883	7,303
Mean	627	746	963	1,123	1,024	2,174	3,129	5,205	3,016	127	93.0	243
Max	1,950	1,340	1,670	1,600	1,420	4,040	7,620	8,050	4,230	835	534	1,030
Min	32	445	516	631	527	807	1,640	3,900	745	27	34	32
Ac-ft	38,560	44,420	59,220	69,060	56,860	133,700	186,200	320,100	179,500	7,790	5,720	14,490

	Calendar Year 2004	Water Year 2005
Total	192,104	562,405
Mean	525	1,541
Max	2,140	8,050
Min	24	27
Ac-ft	381,000	1,116,000



Water-Data Report UT-2005

10126000 BEAR RIVER NEAR CORINNE, UT

Bear River Basin

LOCATION.--Lat 41°34'35", long 112°06'00" referenced to North American Datum of 1927, in NE ¼ SE ¼ NE ¼ sec.30, T.10 N., R.2 W., Box Elder County, Hydrologic Unit 16010204, on right bank 1.2 mi downstream from Salt Creek, 2.0 mi northeast of Corinne, and 2.8 mi downstream from Malad River.

DRAINAGE AREA.--7,029 mi².

WATER-DISCHARGE RECORDS

REVISED RECORDS.--WRD UT-74-1: Drainage area.

PERIOD OF RECORD.--October 1949 to September 1957, October 1963 to current year.

GAGE.--Water-stage recorder. Datum of gage is 4,204.6 ft above NGVD of 1929, unadjusted. Auxiliary nonrecording gage 7,800 ft downstream July 27, 1950 to November 21, 1955.

REMARKS.--Records fair except for estimated daily discharges, which are poor. Natural flow of stream affected by upstream reservoirs, power development, diversions for irrigation, and return flow from irrigated areas.

EXTREMES FOR PERIOD OF RECORD.--Maximum discharge, 14,770 ft³/s, May 19, 1984, gage height, 17.50 ft; minimum daily discharge, 23 ft³/s, Jul 30, 2004.

EXTREMES FOR CURRENT YEAR.--Maximum discharge, 8,040 ft³/s, May 2, gage height, 15.48 ft; minimum daily discharge, 124 ft³/s, Aug 14.

10126000 BEAR RIVER NEAR CORINNE, UT—Continued

**DISCHARGE, CUBIC FEET PER SECOND
WATER YEAR OCTOBER 2004 TO SEPTEMBER 2005
DAILY MEAN VALUES**

[e, estimated]

Day	Oct	Nov	Dec	Jan	Feb	Mar	Apr	May	Jun	Jul	Aug	Sep
1	241	798	585	1,230	1,180	997	2,780	7,100	4,420	849	148	131
2	215	711	753	1,190	1,140	1,020	2,570	7,790	4,230	710	145	133
3	184	1,140	770	1,480	1,130	e1,020	2,100	7,700	4,190	622	148	140
4	298	954	842	1,250	1,100	e1,100	1,920	7,060	4,160	471	315	143
5	334	727	e800	1,210	1,060	e1,100	2,020	6,260	4,120	286	355	142
6	632	714	e760	1,160	897	e1,200	2,850	5,570	4,170	253	295	144
7	429	715	758	1,210	937	e1,200	2,880	4,920	4,310	248	182	138
8	278	692	778	1,250	1,060	e1,300	2,740	4,500	4,400	190	156	138
9	278	741	917	1,100	751	e1,300	2,670	4,520	4,420	174	148	154
10	320	734	1,400	1,200	909	1,180	2,780	4,880	4,620	160	140	149
11	339	637	1,500	1,720	819	1,370	3,210	5,650	4,510	157	135	157
12	316	767	1,420	e1,700	982	1,360	3,300	6,330	4,460	155	130	179
13	292	720	1,260	e1,600	751	1,530	3,180	6,500	4,310	152	125	189
14	292	680	1,190	e1,500	769	2,340	2,990	6,520	4,120	348	124	198
15	283	729	1,280	e1,400	1,010	2,510	2,720	6,530	3,850	405	125	203
16	286	886	1,090	e1,400	990	2,520	2,670	6,270	3,460	213	131	210
17	291	926	957	e1,300	904	2,360	2,690	6,160	3,310	162	147	215
18	325	726	908	e1,300	e1,000	2,300	2,570	6,050	3,190	151	146	221
19	322	673	914	1,270	1,110	2,740	2,560	5,900	3,070	145	145	297
20	352	546	900	1,080	e1,220	2,660	2,810	5,890	2,860	147	145	614
21	550	625	827	1,130	e1,250	2,950	3,200	5,790	2,610	143	137	640
22	1,440	667	820	1,170	e1,300	3,610	3,290	5,560	2,550	144	137	628
23	1,360	829	1,390	983	1,300	3,850	3,240	5,530	2,010	143	138	364
24	1,330	757	1,490	906	1,110	3,870	3,160	5,640	1,810	144	257	354
25	715	678	1,470	1,230	1,020	4,020	3,120	5,730	1,750	144	336	352
26	911	692	1,240	1,140	e1,000	3,840	3,210	5,670	1,360	138	193	515
27	1,040	681	1,160	1,020	e890	3,640	3,720	5,560	1,550	133	155	688
28	869	690	e1,120	1,050	845	2,970	4,420	5,390	1,290	137	148	543
29	729	712	1,120	986	---	2,250	5,590	5,120	1,140	142	146	439
30	702	814	951	1,240	---	2,530	6,470	4,970	977	144	139	496
31	788	---	1,370	1,020	---	2,560	---	4,700	---	147	132	---
Total	16,741	22,361	32,740	38,425	28,434	69,197	93,430	181,760	97,227	7,557	5,303	8,914
Mean	540	745	1,056	1,240	1,016	2,232	3,114	5,863	3,241	244	171	297
Max	1,440	1,140	1,500	1,720	1,300	4,020	6,470	7,790	4,620	849	355	688
Min	184	546	585	906	751	997	1,920	4,500	977	133	124	131
Ac-ft	33,210	44,350	64,940	76,220	56,400	137,300	185,300	360,500	192,800	14,990	10,520	17,680

STATISTICS OF MONTHLY MEAN DATA FOR WATER YEARS 1950-57, 1964- 2005, BY WATER YEAR (WY)

	Oct	Nov	Dec	Jan	Feb	Mar	Apr	May	Jun	Jul	Aug	Sep
Mean	1,324	1,596	1,666	1,786	1,823	2,306	2,807	2,906	2,191	704	610	898
Max	4,240	4,471	4,414	3,639	5,966	6,041	7,258	9,598	9,201	4,186	3,045	3,423
(WY)	(1984)	(1985)	(1984)	(1984)	(1986)	(1986)	(1985)	(1984)	(1984)	(1983)	(1983)	(1984)
Min	95.6	621	535	620	723	913	638	71.8	77.6	40.4	46.7	62.2
(WY)	(1993)	(2001)	(1995)	(1993)	(1993)	(1991)	(1992)	(1992)	(1992)	(2003)	(2004)	(1992)

10126000 BEAR RIVER NEAR CORINNE, UT—Continued

SUMMARY STATISTICS

	Calendar Year 2004		Water Year 2005		Water Years 1950-57, 1964-2005	
Annual total	244,449		602,089			
Annual mean	668		1,650		1,716	
Highest annual mean					5,050	1984
Lowest annual mean					435	1992
Highest daily mean	2,140	Mar 22	7,790	May 2	14,300	May 19, 1984
Lowest daily mean	23	Jul 30	124	Aug 14	23	Jul 30, 2004
Annual seven-day minimum	24	Jul 26	130	Aug 10	24	Jul 26, 2004
Annual runoff (ac-ft)	484,900		1,194,000		1,243,000	
10 percent exceeds	1,480		4,440		3,620	
50 percent exceeds	691		1,000		1,350	
90 percent exceeds	45		147		126	

