



Water-Data Report UT-2005

**09404450 EAST FORK VIRGIN RIVER NEAR GLENDALE, UT**

Virgin River Basin

LOCATION.--Lat 37°20'22", long 112°36'13" referenced to North American Datum of 1927, in SE ¼ NE ¼ NW ¼ sec.14, T.40 S., R.7 W., Kane County, Hydrologic Unit 15010008, on right bank 50 ft downstream from Lydiás Creek, and 1.0 mi north of Glendale on U.S. Highway 89.

DRAINAGE AREA.--74.2 mi<sup>2</sup>.

**WATER-DISCHARGE RECORDS**

PERIOD OF RECORD.--October 1966 to current year.

GAGE.--Water-stage recorder and artificial control. Elevation of gage is 5,900 ft above NGVD of 1929, from topographic map.

REMARKS.--Records good. A few small diversions above station.

EXTREMES FOR PERIOD OF RECORD.--Maximum discharge, 640 ft<sup>3</sup>/s, Jul 27, 1976, gage height, 4.14 ft, maximum gage height, 4.68 ft, Jul 10, 1999, affected by backwater, discharge unknown; minimum discharge, 2.9 ft<sup>3</sup>/s, several days in May and Jun 1989.

EXTREMES FOR CURRENT YEAR.--Peak discharges greater than base discharge of 90 ft<sup>3</sup>/s and (or) maximum (\*):

Date	Time	Discharge (ft <sup>3</sup> /s)	Gage height (ft)
Oct 21	0015	283	2.97
Nov 08	1030	119	2.06
Jan 11	1035	*405	*3.92
Apr 24	0755	254	2.79

Minimum discharge, 5.9 ft<sup>3</sup>/s, Oct 1, 2.

## 09404450 EAST FORK VIRGIN RIVER NEAR GLENDALE, UT—Continued

**DISCHARGE, CUBIC FEET PER SECOND**  
**WATER YEAR OCTOBER 2004 TO SEPTEMBER 2005**  
**DAILY MEAN VALUES**

[e, estimated]

Day	Oct	Nov	Dec	Jan	Feb	Mar	Apr	May	Jun	Jul	Aug	Sep
1	6.7	14	13	16	26	32	66	139	45	18	16	14
2	6.0	15	13	15	25	32	70	140	43	17	16	14
3	6.2	16	13	16	24	37	80	139	47	17	22	13
4	6.6	15	13	16	23	34	90	138	44	17	19	13
5	7.3	13	13	15	23	34	88	137	42	16	17	14
6	6.7	13	14	14	23	37	91	154	39	16	18	11
7	6.7	14	14	13	24	39	108	148	37	16	18	12
8	6.2	67	14	15	22	42	130	129	36	15	18	12
9	6.1	26	14	44	22	49	132	119	36	15	18	13
10	6.5	19	15	115	21	55	113	118	37	16	19	13
11	6.7	17	15	262	28	63	111	108	41	15	24	12
12	6.7	17	14	98	37	75	115	100	40	14	20	12
13	6.1	17	14	56	32	84	127	97	35	14	19	12
14	6.3	16	14	46	30	77	141	94	33	14	19	12
15	6.4	15	14	42	33	76	152	94	31	14	19	11
16	6.4	14	13	39	34	72	168	95	28	13	19	12
17	7.0	14	13	35	30	73	189	93	25	14	17	12
18	7.7	14	13	32	37	69	194	88	24	13	16	13
19	9.3	14	13	31	46	71	186	84	24	13	18	12
20	79	14	13	32	44	74	166	78	22	13	18	12
21	145	16	13	31	38	75	144	77	21	14	17	13
22	35	17	12	30	43	70	136	74	21	14	16	13
23	18	15	11	31	41	82	135	71	24	14	16	13
24	16	14	11	32	37	78	213	66	27	16	15	13
25	14	14	13	33	36	75	191	65	25	16	15	13
26	13	14	13	40	34	67	186	63	23	15	15	13
27	e15	14	13	42	33	69	184	62	21	15	14	14
28	22	15	14	36	32	74	172	58	20	14	14	14
29	17	12	34	33	---	73	157	55	20	14	14	14
30	16	12	20	30	---	71	142	52	19	15	14	14
31	15	---	16	28	---	66	---	51	---	16	13	---
<b>Total</b>	532.6	507	442	1,318	878	1,925	4,177	2,986	930	463	533	383
<b>Mean</b>	17.2	16.9	14.3	42.5	31.4	62.1	139	96.3	31.0	14.9	17.2	12.8
<b>Max</b>	145	67	34	262	46	84	213	154	47	18	24	14
<b>Min</b>	6.0	12	11	13	21	32	66	51	19	13	13	11
<b>Ac-ft</b>	1,060	1,010	877	2,610	1,740	3,820	8,290	5,920	1,840	918	1,060	760

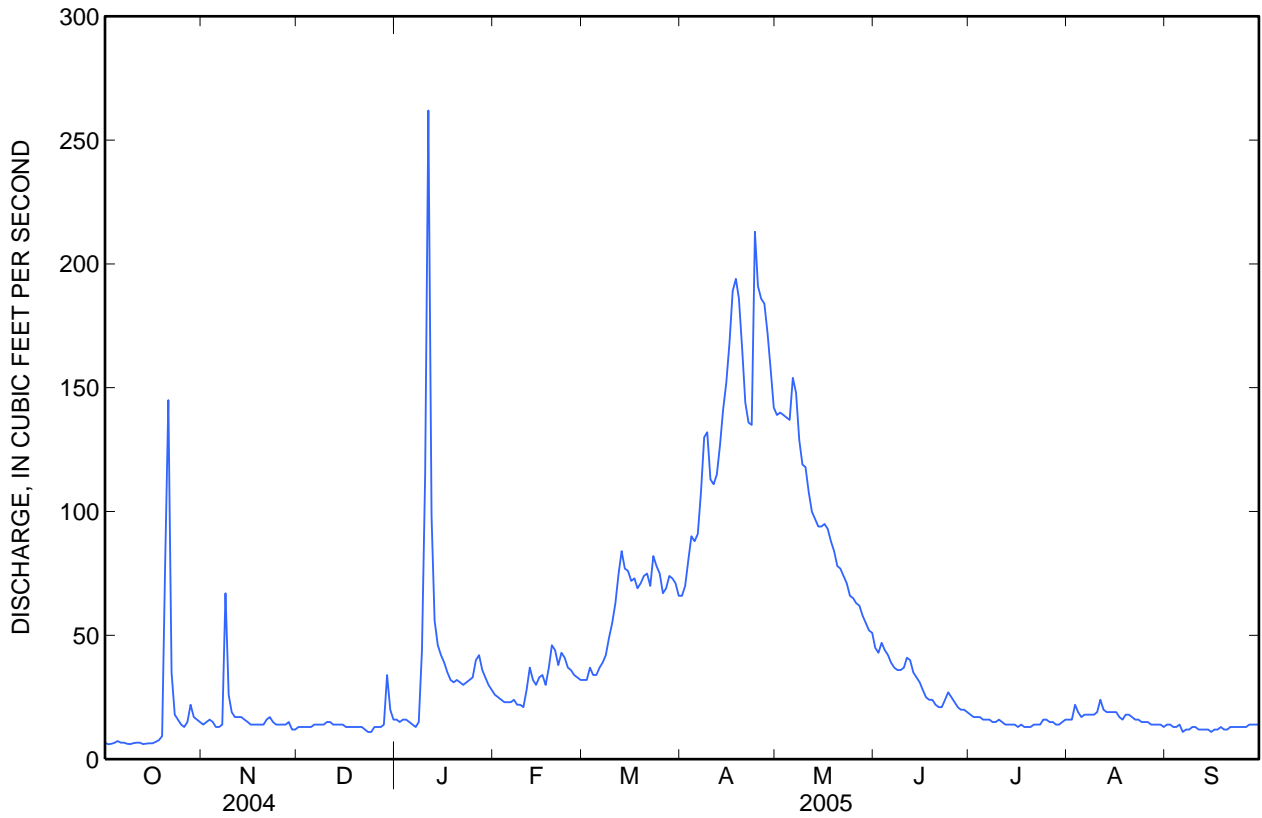
**STATISTICS OF MONTHLY MEAN DATA FOR WATER YEARS 1967 - 2005, BY WATER YEAR (WY)**

	Oct	Nov	Dec	Jan	Feb	Mar	Apr	May	Jun	Jul	Aug	Sep
<b>Mean</b>	13.2	14.8	15.5	16.8	18.8	24.9	37.2	28.9	14.3	10.7	10.6	10.5
<b>Max</b>	22.5	24.6	30.2	42.5	36.4	62.1	145	131	43.6	28.3	26.6	24.7
<b>(WY)</b>	(1984)	(1984)	(1967)	(2005)	(1980)	(2005)	(1980)	(1980)	(1980)	(1983)	(1983)	(1980)
<b>Min</b>	5.34	6.50	8.59	9.40	9.90	11.5	8.45	5.34	3.83	3.86	3.36	4.69
<b>(WY)</b>	(2004)	(2004)	(2003)	(1991)	(1991)	(1999)	(2002)	(2002)	(2002)	(2003)	(2002)	(2003)

09404450 EAST FORK VIRGIN RIVER NEAR GLENDALE, UT—Continued

SUMMARY STATISTICS

	Calendar Year 2004		Water Year 2005		Water Years 1967 - 2005	
<b>Annual total</b>	3,985.8		15,074.6			
<b>Annual mean</b>	10.9		41.3		18.0	
<b>Highest annual mean</b>					46.2	1980
<b>Lowest annual mean</b>					8.26	1990
<b>Highest daily mean</b>	145	Oct 21	262	Jan 11	285	Apr 21, 1980
<b>Lowest daily mean</b>	3.2	Jun 15	6.0	Oct 2	3.0	Aug 7, 2002
<b>Annual seven-day minimum</b>	3.4	Jul 6	6.4	Oct 8	3.0	Aug 28, 2002
<b>Annual runoff (ac-ft)</b>	7,910		29,900		13,030	
<b>10 percent exceeds</b>	18		109		27	
<b>50 percent exceeds</b>	10		20		14	
<b>90 percent exceeds</b>	3.9		13		6.4	





Water-Data Report UT-2005

**09404900 EAST FORK VIRGIN RIVER NEAR SPRINGDALE, UT**

Virgin River Basin

LOCATION.--Lat 37°09'51", long 112°57'28" referenced to North American Datum of 1927, in SE ¼ SW ¼ NW ¼ sec.2, T.42 S., R.10 W., Washington County, Hydrologic Unit 15010008, Zion National Park, on right bank 0.7 mi upstream from Zion National Park boundary, 1.2 mi upstream from Shunes Creek, 2.7 mi southeast of Springdale, and 3.4 mi south-southeast of Zion National Park headquarters.

DRAINAGE AREA.--343 mi<sup>2</sup>.

**WATER-DISCHARGE RECORDS**

PERIOD OF RECORD.--October 1991 to current year.

GAGE.--Water-stage recorder and crest-stage gage. Elevation of gage is 3,940 ft above NGVD of 1929, from topographic map.

REMARKS.--Records good except for estimated daily discharges, which are poor.

EXTREMES FOR PERIOD OF RECORD.--Maximum discharge, 3,530 ft<sup>3</sup>/s, Jan 11, 2005, gage height, 11.91 ft from floodmark and rating curve extended above 233 ft<sup>3</sup>/s on basis of slope-area measurement at gage height 9.70 ft; minimum daily discharge, 26 ft<sup>3</sup>/s, Sep 14, 15, 2002.

EXTREMES FOR CURRENT YEAR.--Peak discharges greater than base discharge of 1,000 ft<sup>3</sup>/s and (or) maximum (\*):

Date	Time	Discharge (ft <sup>3</sup> /s)	Gage height (ft)
Oct 21	0805	1,700	9.24
Jan 11	1605	*3,530	*11.91

Minimum daily discharge, 40 ft<sup>3</sup>/s, Jul 23.

## 09404900 EAST FORK VIRGIN RIVER NEAR SPRINGDALE, UT—Continued

**DISCHARGE, CUBIC FEET PER SECOND**  
**WATER YEAR OCTOBER 2004 TO SEPTEMBER 2005**  
**DAILY MEAN VALUES**

[e, estimated]

Day	Oct	Nov	Dec	Jan	Feb	Mar	Apr	May	Jun	Jul	Aug	Sep
1	43	60	54	59	86	110	128	205	78	54	46	43
2	42	56	53	58	82	109	e150	201	75	53	46	44
3	42	57	53	60	80	e155	e170	205	79	52	53	44
4	42	57	53	80	78	115	e170	202	79	52	72	44
5	56	56	54	64	78	109	e175	196	77	51	53	44
6	44	56	54	59	78	111	e165	210	76	48	62	43
7	42	56	55	53	84	115	e180	220	71	47	53	43
8	43	373	56	82	80	117	208	194	70	48	58	43
9	43	155	55	516	75	120	208	179	70	46	58	44
10	43	67	55	1,180	76	e140	185	171	72	45	56	45
11	44	64	56	1,940	167	e160	171	171	74	48	62	44
12	43	62	55	e395	e240	e155	179	156	79	45	56	44
13	42	63	55	e205	e170	e175	189	152	73	43	55	44
14	42	60	54	e160	114	145	204	146	69	42	52	44
15	43	56	55	104	111	134	216	142	68	43	63	44
16	43	55	53	93	113	128	221	141	66	43	62	45
17	48	55	53	92	108	122	240	136	62	42	52	45
18	48	55	53	88	e205	119	255	130	60	43	49	46
19	59	55	53	86	e285	120	262	126	58	41	90	46
20	220	55	53	92	e285	e260	231	119	57	42	68	45
21	846	62	55	93	e190	e175	207	112	54	57	52	45
22	272	79	52	89	e265	e175	198	107	55	45	50	45
23	74	61	50	90	e230	e235	195	103	66	40	49	45
24	65	56	49	91	e175	e245	295	99	73	42	47	46
25	60	56	51	91	e150	e250	276	95	70	44	45	44
26	56	56	52	116	e140	e195	257	94	64	43	45	44
27	106	69	55	e210	119	e180	246	90	60	43	45	45
28	315	111	56	e120	112	e190	251	91	57	42	44	51
29	130	55	216	120	---	e180	239	84	58	42	44	48
30	75	51	114	98	---	e165	209	84	56	43	43	48
31	63	---	63	89	---	132	---	80	---	44	43	---
<b>Total</b>	3,134	2,229	1,895	6,673	3,976	4,841	6,280	4,441	2,026	1,413	1,673	1,345
<b>Mean</b>	101	74.3	61.1	215	142	156	209	143	67.5	45.6	54.0	44.8
<b>Max</b>	846	373	216	1,940	285	260	295	220	79	57	90	51
<b>Min</b>	42	51	49	53	75	109	128	80	54	40	43	43
<b>Ac-ft</b>	6,220	4,420	3,760	13,240	7,890	9,600	12,460	8,810	4,020	2,800	3,320	2,670

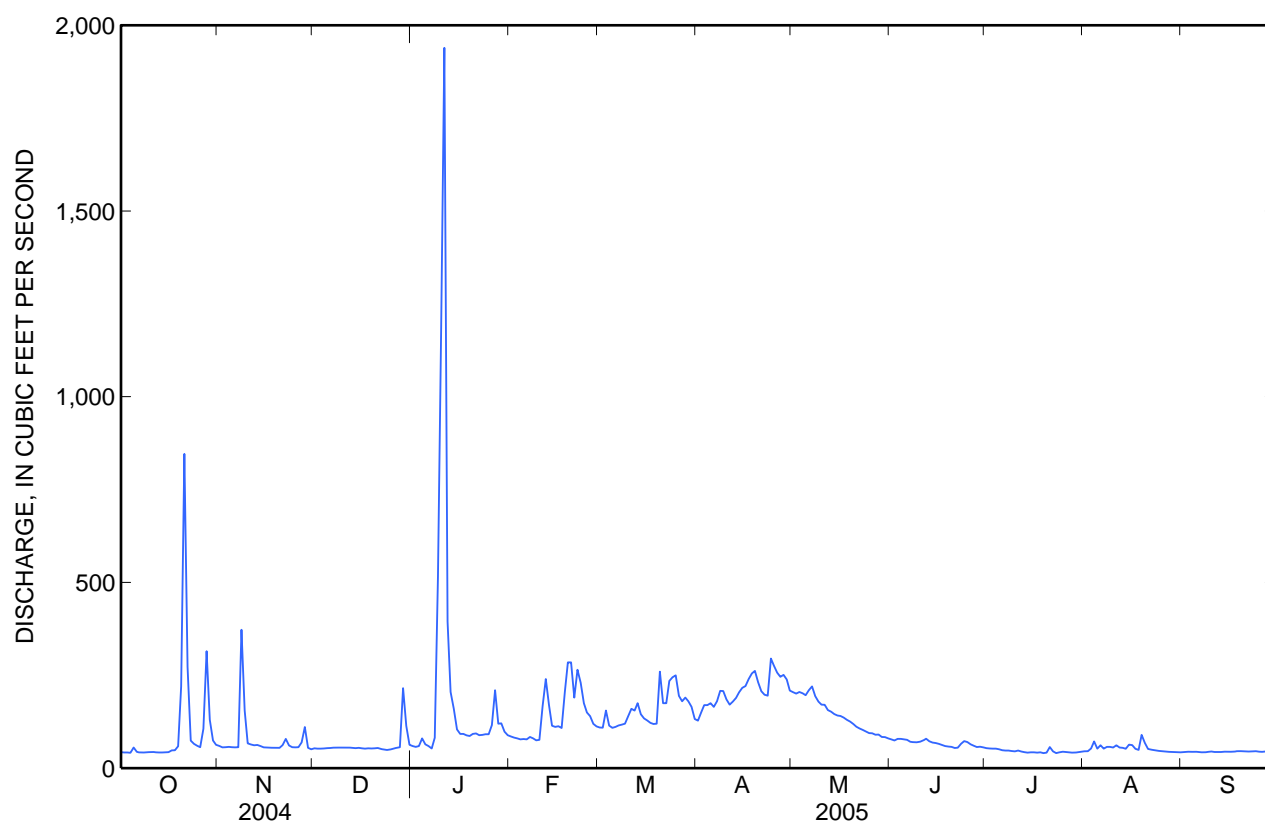
## STATISTICS OF MONTHLY MEAN DATA FOR WATER YEARS 1992 - 2005, BY WATER YEAR (WY)

	Oct	Nov	Dec	Jan	Feb	Mar	Apr	May	Jun	Jul	Aug	Sep
<b>Mean</b>	50.6	55.1	55.4	72.9	71.9	80.6	77.8	57.4	43.6	39.6	42.9	45.6
<b>Max</b>	101	74.3	62.9	215	142	156	209	143	67.5	45.6	54.0	74.6
<b>(WY)</b>	(2005)	(2005)	(1997)	(2005)	(2005)	(2005)	(2005)	(2005)	(2005)	(2005)	(2005)	(1997)
<b>Min</b>	37.0	47.0	44.7	43.3	53.8	45.6	36.8	35.4	34.4	31.7	36.3	29.6
<b>(WY)</b>	(2004)	(2003)	(2003)	(2003)	(2002)	(2002)	(2002)	(2002)	(1996)	(2002)	(2002)	(2002)

09404900 EAST FORK VIRGIN RIVER NEAR SPRINGDALE, UT—Continued

SUMMARY STATISTICS

	Calendar Year 2004		Water Year 2005		Water Years 1992 - 2005	
Annual total	20,518		39,926			
Annual mean	56.1		109		57.7	
Highest annual mean					109	2005
Lowest annual mean					41.6	2002
Highest daily mean	846	Oct 21	1,940	Jan 11	1,940	Jan 11, 2005
Lowest daily mean	34	Jul 22	40	Jul 23	26	Sep 14, 2002
Annual seven-day minimum	35	Jul 20	42	Jul 14	27	Sep 12, 2002
Annual runoff (ac-ft)	40,700		79,190		41,810	
10 percent exceeds	67		208		77	
50 percent exceeds	50		66		50	
90 percent exceeds	39		44		36	





**09405500 NORTH FORK VIRGIN RIVER NEAR SPRINGDALE, UT**

Virgin River Basin

LOCATION.--Lat 37°12'35", long 112°58'40" referenced to North American Datum of 1927, in NW ¼ SW ¼ NW ¼ sec.22, T.41 S., R.10 W., Washington County, Hydrologic Unit 15010008, Zion National Park, on right bank 0.2 mi downstream from point of diversion of Springdale Canal, 0.5 mi downstream from Pine Creek, and 1.9 mi northeast of Springdale.

DRAINAGE AREA.--344 mi<sup>2</sup>.

**WATER-DISCHARGE RECORDS**

PERIOD OF RECORD.--May 1913 to June 1914, June to November 1923, April to June, August and September 1925 (fragmentary), October 1925 to current year. Published as Zion Creek near Springdale 1913-14, and as Mukuntuweap River near Springdale 1923 and 1925-32. Published as combined flow of river and Springdale canal 1932-88.

GAGE.--Water-stage recorder. Crest-stage gage since May 31, 1995. Elevation of gage is 3,970 ft above NGVD of 1929, from topographic map. May 13, 1913 to June 30, 1914, nonrecording gage at site 3.8 mi downstream at different datum. June 6, 1923 to August 20, 1932, nonrecording gage at site 0.8 mi upstream. November 3, 1932 to December 14, 1949, nonrecording gage 50 ft downstream at datum 0.34 ft higher.

REMARKS.--Records good except for estimated daily discharges, which are poor. Some regulation of low flows by Kolob Reservoir (20 mi upstream) and several diversions for irrigation upstream from station.

EXTREMES FOR PERIOD OF RECORD.--Maximum discharge, 9,150 ft<sup>3</sup>/s, Dec 6, 1966, gage height, 12.98 ft, from rating curve extended above 2,000 ft<sup>3</sup>/s on basis of drift measurement at gage height, 6.7 ft, and slope-area measurement at gage height, 10.25 ft; minimum estimated, less than 5.0 ft<sup>3</sup>/s, Apr 12, 1995, result of landslide 1.0 mi upstream.

EXTREMES FOR CURRENT YEAR.--Peak discharges greater than base discharge of 800 ft<sup>3</sup>/s and (or) maximum (\*):

Date	Time	Discharge (ft <sup>3</sup> /s)	Gage height (ft)
Oct 20	2320	3,880	7.96
Nov 08	1005	2,650	6.30
Nov 27	2300	902	3.54
Dec 29	1245	1,010	3.72
Jan 11	1050	*5,450	*9.18
Feb 18	2015	886	3.35
May 20	2200	2,890	6.34

Minimum daily discharge, 32 ft<sup>3</sup>/s, on several days.

## 09405500 NORTH FORK VIRGIN RIVER NEAR SPRINGDALE, UT—Continued

**DISCHARGE, CUBIC FEET PER SECOND**  
**WATER YEAR OCTOBER 2004 TO SEPTEMBER 2005**  
**DAILY MEAN VALUES**

[e, estimated]

Day	Oct	Nov	Dec	Jan	Feb	Mar	Apr	May	Jun	Jul	Aug	Sep
1	38	69	57	80	111	135	209	833	988	161	72	66
2	36	64	61	71	105	134	243	934	977	151	77	66
3	33	69	58	73	101	170	285	1,120	1,270	144	97	66
4	33	68	61	98	99	143	313	1,310	849	137	98	68
5	35	66	65	77	99	140	276	1,720	756	130	110	69
6	33	66	69	70	98	144	298	1,460	748	124	104	66
7	32	70	71	57	108	161	397	1,000	625	117	100	65
8	32	985	72	122	97	176	502	1,030	546	113	109	65
9	32	301	73	935	88	194	472	1,310	499	107	141	66
10	33	177	71	2,060	91	246	364	1,410	493	105	161	67
11	34	156	70	2,820	227	280	334	1,030	693	101	264	65
12	32	144	70	630	248	309	367	1,000	664	97	132	64
13	32	121	70	305	167	335	484	1,180	511	91	175	63
14	32	106	68	224	138	283	602	1,450	465	e86	129	63
15	32	98	67	178	141	237	679	1,610	440	e85	129	63
16	33	95	64	155	140	221	776	1,800	405	e86	110	64
17	33	90	59	143	131	213	907	1,740	368	e85	99	63
18	40	87	66	133	280	201	1,070	1,500	337	e82	90	63
19	48	84	64	127	312	205	998	1,740	308	76	88	63
20	837	82	63	133	280	410	672	1,920	283	80	95	63
21	1,350	91	66	133	187	228	615	1,890	266	80	86	65
22	269	115	57	127	315	216	680	1,760	256	87	84	66
23	116	82	43	127	213	378	689	1,720	266	85	82	64
24	97	75	40	131	178	385	1,320	1,690	243	92	79	64
25	85	77	53	133	159	324	850	1,600	235	86	79	63
26	76	77	61	189	149	232	839	1,560	220	83	77	63
27	180	121	65	238	143	235	927	1,400	197	76	76	64
28	206	115	72	152	140	254	924	1,350	188	72	74	73
29	96	56	376	170	---	245	722	1,310	182	71	73	66
30	85	49	116	130	---	235	745	1,180	168	72	72	65
31	83	---	85	116	---	206	---	1,030	---	74	68	---
<b>Total</b>	4,133	3,856	2,353	10,137	4,545	7,275	18,559	43,587	14,446	3,036	3,230	1,951
<b>Mean</b>	133	129	75.9	327	162	235	619	1,406	482	97.9	104	65.0
<b>Max</b>	1,350	985	376	2,820	315	410	1,320	1,920	1,270	161	264	73
<b>Min</b>	32	49	40	57	88	134	209	833	168	71	68	63
<b>Ac-ft</b>	8,200	7,650	4,670	20,110	9,020	14,430	36,810	86,450	28,650	6,020	6,410	3,870

## STATISTICS OF MONTHLY MEAN DATA FOR WATER YEARS 1989 - 2005, BY WATER YEAR (WY)

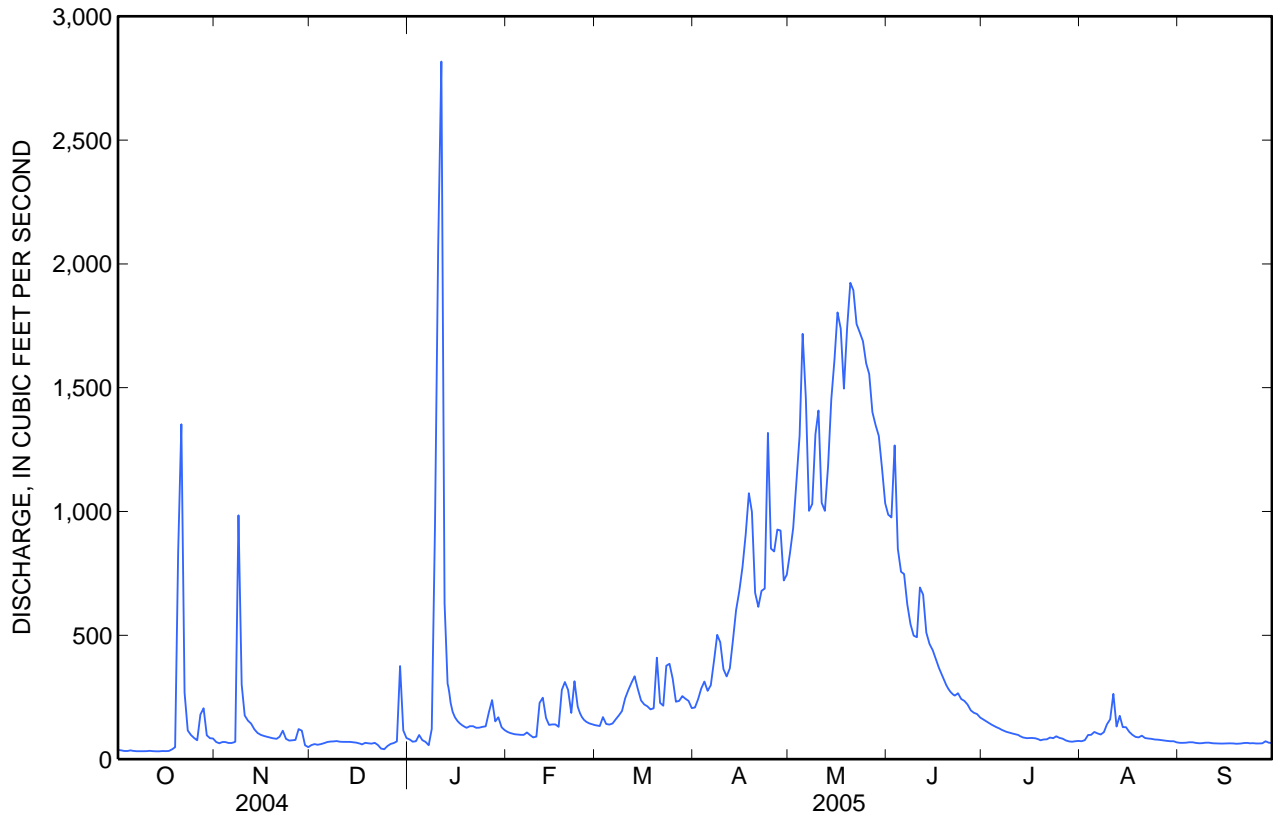
	Oct	Nov	Dec	Jan	Feb	Mar	Apr	May	Jun	Jul	Aug	Sep
<b>Mean</b>	53.0	57.1	53.1	74.2	73.2	116	211	299	117	54.1	49.2	48.0
<b>Max</b>	133	129	75.9	327	162	271	644	1,406	482	113	104	115
<b>(WY)</b>	(2005)	(2005)	(2005)	(2005)	(2005)	(1995)	(1993)	(2005)	(2005)	(1995)	(2005)	(1998)
<b>Min</b>	32.9	35.9	36.6	39.0	47.8	48.0	43.6	30.8	24.2	24.5	22.9	24.8
<b>(WY)</b>	(2004)	(1990)	(1990)	(1991)	(1990)	(2002)	(2002)	(2002)	(2002)	(2002)	(2002)	(1989)



09405500 NORTH FORK VIRGIN RIVER NEAR SPRINGDALE, UT—Continued

SUMMARY STATISTICS

	Calendar Year 2004		Water Year 2005		Water Years 1989 - 2005	
Annual total	27,628		117,108			
Annual mean	75.5		321		101	
Highest annual mean					321	2005
Lowest annual mean					38.5	2002
Highest daily mean	1,350	Oct 21	2,820	Jan 11	2,820	Jan 11, 2005
Lowest daily mean	26	Aug 30	32	Oct 7	22	Aug 5, 1994
Annual seven-day minimum	26	Aug 28	32	Oct 7	22	Aug 12, 2002
Annual runoff (ac-ft)	54,800		232,300		72,850	
10 percent exceeds	141		992		171	
50 percent exceeds	48		127		54	
90 percent exceeds	31		63		33	





Water-Data Report UT-2005

## 09406000 VIRGIN RIVER AT VIRGIN, UT

Virgin River Basin

LOCATION.--Lat 37°12'15", long 113°10'48" referenced to North American Datum of 1927, in SW ¼ NW ¼ SW ¼ sec.23, T.41 S., R.12 W., Washington County, Hydrologic Unit 15010008, on right bank 0.25 mi downstream from North Creek and 0.5 mi east of Virgin.

DRAINAGE AREA.--956 mi<sup>2</sup>.

### WATER-DISCHARGE RECORDS

REVISED RECORDS.--WSP 1313: 1942-43(M), 1947-48(M). WSP 1633: 1921(M), 1950-51. WDR-UT-89-1: Drainage area.

PERIOD OF RECORD.--April 1909 to September 1971, October 1978 to current year. Fragmentary prior to 1926, monthly discharge published in WSP 1313.

GAGE.--Water-stage recorder. Crest-stage gage since February 11, 1992. Elevation of gage is 3,500 ft above NGVD of 1929, from topographic map.

October 1, 1978 to July 5, 1985, 2 mi downstream on left bank, December 19, 1949, to September 1971, across from previous site on right bank at different datum. Prior to December 19, 1949, several nonrecording gages within 3 mi of present site at various datums.

REMARKS.--Records good except for estimated daily discharge, which are poor. Diversions for irrigation of about 2,800 acres above station.

EXTREMES FOR PERIOD OF RECORD.--Maximum discharge, 22,800 ft<sup>3</sup>/s, Dec 6, 1966, gage height, 18.00 ft, site and datum then in use, from rating curve extended above 5,000 ft<sup>3</sup>/s on basis of a slope-area measurement and a float measurement ; minimum observed, 22 ft<sup>3</sup>/s, Jul 10, 1920 and Jun 11, 1921.

EXTREMES FOR CURRENT YEAR.--Peak discharges greater than base discharge of 1,600 ft<sup>3</sup>/s and (or) maximum (\*):

Date	Time	Discharge (ft <sup>3</sup> /s)	Gage height (ft)
Oct 21	0445	6,210	15.69
Nov 08	1220	3,930	14.09
Dec 29	1505	2,280	12.50
Jan 11	1130	*9,840	*17.69
Feb 11	2345	1,980	12.14
Feb 18	2300	2,350	12.58
May 21	0100	3,330	13.57

Minimum daily discharge, 68 ft<sup>3</sup>/s, Oct 3, 14 .

## 09406000 VIRGIN RIVER AT VIRGIN, UT—Continued

**DISCHARGE, CUBIC FEET PER SECOND**  
**WATER YEAR OCTOBER 2004 TO SEPTEMBER 2005**  
**DAILY MEAN VALUES**

[e, estimated]

Day	Oct	Nov	Dec	Jan	Feb	Mar	Apr	May	Jun	Jul	Aug	Sep
1	e83	158	131	184	270	332	390	1,150	1,180	215	120	94
2	e73	149	136	161	241	320	429	1,270	1,160	202	123	99
3	e68	152	135	159	240	441	494	1,450	1,440	193	144	100
4	e70	148	134	226	228	344	550	1,630	1,050	188	164	102
5	e94	144	138	194	227	322	502	2,110	930	178	164	101
6	e80	141	143	164	223	320	503	1,960	940	170	160	100
7	e76	143	145	146	240	340	616	1,440	829	160	149	97
8	e70	1,600	148	247	237	356	826	1,290	720	157	236	96
9	71	598	147	2,750	207	366	826	1,620	675	148	210	98
10	74	307	148	5,660	205	436	664	1,830	654	144	211	101
11	76	261	144	7,550	674	495	580	1,370	762	146	343	101
12	74	265	143	1,920	973	528	599	1,280	870	140	199	99
13	70	217	142	800	563	598	725	1,390	636	132	227	97
14	68	192	141	581	364	523	884	1,760	572	127	228	98
15	74	173	139	451	331	443	989	1,940	544	129	214	98
16	73	165	135	398	332	415	1,100	2,150	512	130	180	99
17	78	161	131	373	314	398	1,300	2,210	468	125	154	98
18	89	158	134	345	739	373	1,480	1,820	434	123	137	98
19	110	154	135	319	1,030	376	1,570	2,040	394	118	152	98
20	1,230	152	134	312	1,030	874	1,060	2,300	364	116	167	95
21	4,020	162	137	314	579	492	898	2,340	341	171	132	100
22	919	246	130	301	988	455	975	2,120	322	166	128	101
23	260	181	117	293	713	e1,100	919	2,060	336	125	124	99
24	202	157	109	299	516	e960	2,050	2,000	345	136	119	96
25	178	155	117	292	420	e1,030	1,510	1,870	321	129	116	96
26	162	155	130	367	381	615	1,310	1,800	297	125	112	97
27	371	154	138	737	365	518	1,350	1,670	268	119	109	98
28	816	350	139	406	347	508	1,460	1,580	250	115	107	108
29	272	142	787	484	---	479	1,220	1,510	247	111	105	107
30	197	127	337	362	---	462	1,080	1,410	228	115	104	104
31	175	---	192	293	---	401	---	1,230	---	117	101	---
<b>Total</b>	10,273	7,267	5,116	27,088	12,977	15,620	28,859	53,600	18,089	4,470	4,939	2,975
<b>Mean</b>	331	242	165	874	463	504	962	1,729	603	144	159	99.2
<b>Max</b>	4,020	1,600	787	7,550	1,030	1,100	2,050	2,340	1,440	215	343	108
<b>Min</b>	68	127	109	146	205	320	390	1,150	228	111	101	94
<b>Ac-ft</b>	20,380	14,410	10,150	53,730	25,740	30,980	57,240	106,300	35,880	8,870	9,800	5,900

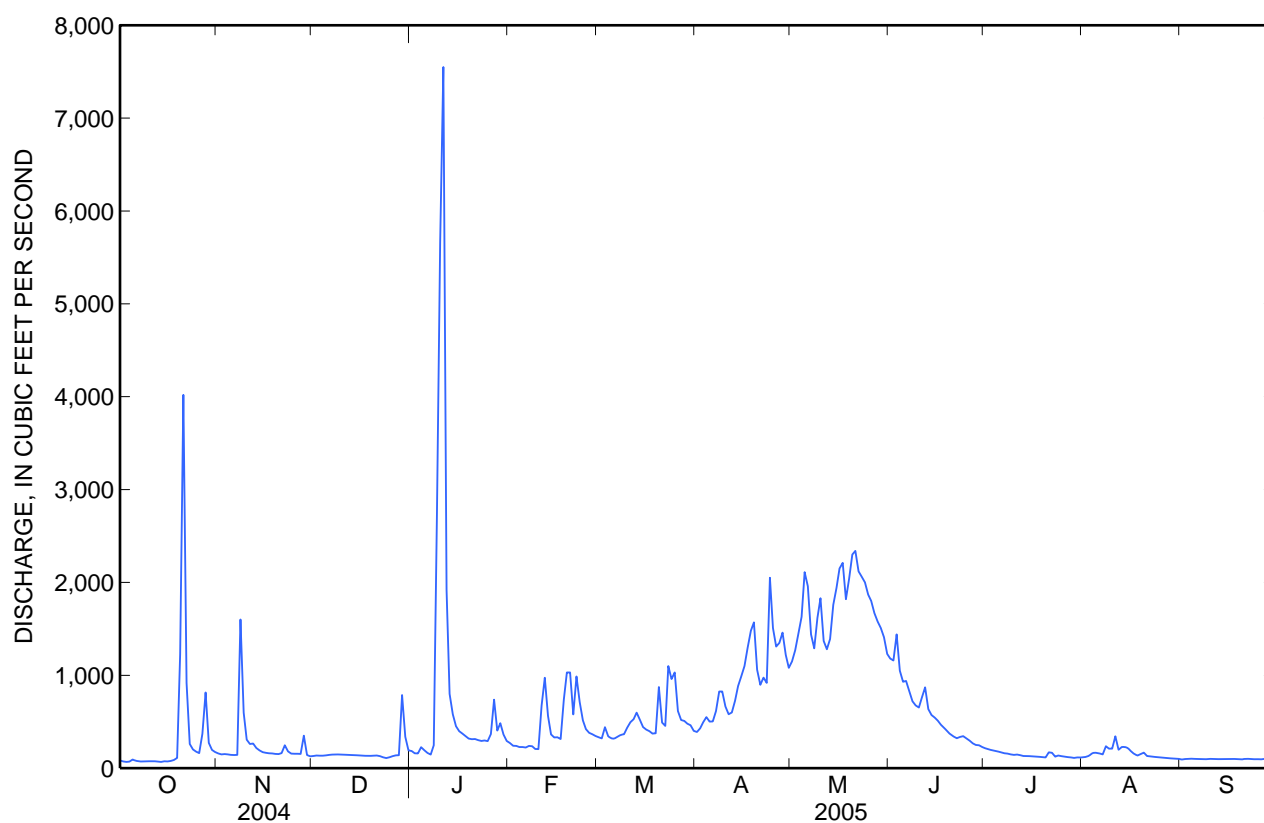
## STATISTICS OF MONTHLY MEAN DATA FOR WATER YEARS 1910 - 2005, BY WATER YEAR (WY)

	Oct	Nov	Dec	Jan	Feb	Mar	Apr	May	Jun	Jul	Aug	Sep
<b>Mean</b>	130	146	155	169	190	250	387	433	159	118	133	134
<b>Max</b>	528	606	648	874	833	822	981	1,729	762	484	441	504
<b>(WY)</b>	(1923)	(1923)	(1967)	(2005)	(1980)	(1910)	(1993)	(2005)	(1983)	(1911)	(1916)	(1911)
<b>Min</b>	61.3	82.9	77.4	70.9	90.9	91.7	86.3	64.8	50.8	30.4	43.5	53.1
<b>(WY)</b>	(1929)	(1926)	(1932)	(1932)	(1926)	(1924)	(2002)	(2002)	(2002)	(1928)	(1928)	(1956)

**09406000 VIRGIN RIVER AT VIRGIN, UT—Continued**

**SUMMARY STATISTICS**

	Calendar Year 2004		Water Year 2005		Water Years 1910 - 2005	
<b>Annual total</b>	53,136		191,273			
<b>Annual mean</b>	145		524		200	
<b>Highest annual mean</b>					524	2005
<b>Lowest annual mean</b>					84.6	2002
<b>Highest daily mean</b>	4,020	Oct 21	7,550	Jan 11	10,600	Sep 30, 1911
<b>Lowest daily mean</b>	50	Jul 14	68	Oct 3	22	Jul 10, 1920
<b>Annual seven-day minimum</b>	55	Jul 8	72	Oct 8	23	Jun 8, 1921
<b>Annual runoff (ac-ft)</b>	105,400		379,400		145,200	
<b>10 percent exceeds</b>	208		1,400		380	
<b>50 percent exceeds</b>	108		240		128	
<b>90 percent exceeds</b>	57		99		69	



**09406000 VIRGIN RIVER AT VIRGIN, UT—Continued**

**WATER-QUALITY RECORDS**

PERIOD OF RECORD.--October 2004 to September 2005.

PERIOD OF DAILY RECORD.--

DISSOLVED OXYGEN: October 2004 to September 2005.

SPECIFIC CONDUCTANCE: October 2004 to September 2005.

WATER TEMPERATURE: October 2004 to September 2005.

TURBIDITY: October 2004 to September 2005.

INSTRUMENTATION.--Water-quality monitor from October 2004 to September 2005.

REMARKS.--Dissolved oxygen records poor. Specific conductivity records good. Temperature records good. Turbidity records fair.

EXTREMES FOR PERIOD OF DAILY RECORD.--

DISSOLVED OXYGEN: Maximum, 13.2 mg/L, May 11, 2004; minimum, 5.5 mg/L, Aug 8, 2005.

SPECIFIC CONDUCTANCE: Maximum, 3,790 microsiemens/cm, Jul 22, 2005; minimum, 292 microsiemens/cm, Nov 28, 2004.

WATER TEMPERATURE: Maximum, 27.5°C, Jul 25, 2005; minimum, 0.8°C, Dec 24, 2004.

TURBIDITY: Maximum, 2,900 FNU, May 20, 2005; minimum, 6.0 FNU, Jul 18, 2005.

EXTREMES FOR CURRENT YEAR.--

DISSOLVED OXYGEN: Maximum, 13.2 mg/L, May 11; minimum, 5.5 mg/L, Aug 8.

SPECIFIC CONDUCTANCE: Maximum, 3,790 microsiemens/cm, Jul 22; minimum, 292 microsiemens/cm, Nov 28.

WATER TEMPERATURE: Maximum, 27.5°C, Jul 25; minimum, 0.8°C, Dec 24.

TURBIDITY: Maximum, 2,900 FNU, May 20; minimum, 6.0 FNU, Jul 18.

## 09406000 VIRGIN RIVER AT VIRGIN, UT—Continued

DISSOLVED OXYGEN, WATER, UNFILTERED, MILLIGRAMS PER LITER  
WATER YEAR OCTOBER 2004 TO SEPTEMBER 2005

Day	Max	Min	Mean	Max	Min	Mean	Max	Min	Mean	Max	Min	Mean
	October			November			December			January		
1	---	---	---	11.0	10.2	10.6	---	---	---	11.3	10.7	11.0
2	---	---	---	11.2	10.1	10.6	---	---	---	11.2	10.6	10.9
3	---	---	---	10.9	9.9	10.4	---	---	---	10.9	10.5	10.7
4	---	---	---	10.7	9.8	10.3	---	---	---	11.0	10.5	10.7
5	---	---	---	10.6	9.6	10.1	---	---	---	11.3	11.0	11.2
6	---	---	---	10.4	9.5	10	---	---	---	11.5	11.0	11.3
7	---	---	---	10.1	9.6	9.9	---	---	---	11.9	11.5	11.8
8	---	---	---	10.6	9.5	10.1	---	---	---	12.0	11.4	11.7
9	---	---	---	10.7	10.2	10.5	11.0	10.3	10.7	12.1	11.8	12.0
10	---	---	---	10.7	9.9	10.3	11.2	10.5	10.8	11.9	11.5	11.7
11	---	---	---	10.6	9.8	10.2	11.1	10.4	10.7	11.7	11.3	11.5
12	---	---	---	10.5	9.8	10.2	11.2	10.4	10.8	12.2	11.7	12.0
13	---	---	---	10.4	9.7	10.1	11.2	10.5	10.8	12.4	11.8	12.1
14	---	---	---	10.7	9.8	10.2	11.2	10.5	10.8	12.8	12.0	12.2
15	---	---	---	10.8	9.8	10.3	11.3	10.7	11.0	12.8	11.8	12.4
16	---	---	---	10.5	---	---	11.6	10.9	11.2	12.5	11.5	12.0
17	---	---	---	---	---	---	11.8	11.1	11.4	12.2	11.2	11.7
18	---	---	---	---	---	---	11.8	10.9	11.3	12.1	11.2	11.6
19	9.0	8.5	---	---	---	---	11.8	10.9	11.3	12.0	10.9	11.5
20	9.1	7.4	8.5	---	---	---	11.7	10.9	11.3	11.7	10.6	11.2
21	9.8	8.8	9.5	---	---	---	11.3	10.6	11.0	11.6	10.7	11.1
22	10.2	9.7	10.0	---	---	---	11.9	11.2	11.5	11.5	10.5	11.0
23	10.2	9.2	9.8	---	---	---	12.3	11.6	11.9	11.4	10.4	10.9
24	9.8	8.9	9.4	---	---	---	12.7	11.7	12.1	11.3	10.4	10.9
25	9.7	8.9	9.3	---	---	---	12.4	11.4	11.9	11.0	10.2	10.6
26	9.7	9.2	9.4	---	---	---	11.8	11.1	11.4	10.8	10.4	10.6
27	10.4	9.3	9.6	---	---	---	11.2	10.8	11.0	11.2	10.8	11.0
28	10.8	10.3	10.5	---	---	---	11.2	10.4	10.7	11.2	10.6	10.9
29	10.6	9.8	10.3	---	---	---	11.4	10.4	10.9	11.1	10.6	10.8
30	10.6	9.8	10.2	---	---	---	11.5	10.9	11.2	11.5	10.6	11.0
31	10.6	9.8	10.2	---	---	---	11.2	10.8	11.0	11.6	10.7	11.2
Month	10.8	7.4	9.7	11.2	9.5	10.3	12.7	10.3	11.2	12.8	10.2	11.3

## 09406000 VIRGIN RIVER AT VIRGIN, UT—Continued

DISSOLVED OXYGEN, WATER, UNFILTERED, MILLIGRAMS PER LITER  
WATER YEAR OCTOBER 2004 TO SEPTEMBER 2005

Day	Max	Min	Mean	Max	Min	Mean	Max	Min	Mean	Max	Min	Mean
	February			March			April			May		
1	11.7	10.9	11.3	11.1	9.9	10.5	---	---	---	10.2	9.1	9.7
2	12.0	10.9	11.3	10.9	9.8	10.3	---	---	---	10.5	9.1	9.7
3	12.1	10.8	11.4	10.9	9.8	10.3	---	---	---	10.7	9.1	9.8
4	11.3	10.3	10.8	10.9	9.9	10.4	---	---	---	11.0	9.3	10
5	---	---	---	10.6	10.0	10.3	---	---	---	11.4	9.3	10.5
6	---	---	---	10.8	9.6	10.2	---	---	---	11.7	8.3	10.7
7	---	---	---	10.9	9.7	10.3	---	---	---	11.9	10.0	11.1
8	11.0	9.2	10.3	10.9	9.7	10.3	---	---	---	11.3	9.4	10.4
9	11.7	10.7	11.2	10.9	9.6	10.1	---	---	---	11.7	9.9	10.6
10	11.6	10.8	11.2	10.7	9.6	10.1	---	---	---	11.7	8.7	11.0
11	---	---	---	10.7	9.7	10.2	---	---	---	13.2	10.6	12.0
12	12.3	11.4	11.7	10.7	9.8	10.3	---	---	---	13.0	10.9	11.9
13	11.9	11.0	11.4	10.6	10.1	10.4	---	---	---	12.4	10.5	11.4
14	11.4	10.4	10.9	11.1	10.4	10.8	---	---	---	12.3	10.2	11.1
15	---	---	---	11.7	10.4	11.1	---	---	---	12.8	9.9	11.1
16	---	---	---	11.6	10.3	11.0	---	---	---	12.5	8.7	10.7
17	---	---	---	11.2	10.2	10.7	---	---	---	10.4	7.9	9.1
18	---	---	---	11.1	9.8	10.5	---	---	---	---	---	---
19	---	---	---	10.6	10.1	10.3	---	---	---	---	---	---
20	---	---	---	11.1	10.2	10.7	---	---	---	---	---	---
21	---	---	---	11.2	9.9	10.6	---	---	---	---	---	---
22	---	---	---	10.8	10.2	10.5	---	8.2	---	---	---	---
23	---	---	---	10.9	10.0	10.6	8.7	8.3	8.5	---	---	---
24	---	---	---	10.8	9.9	10.3	9.5	8.1	8.8	---	---	---
25	---	---	---	11.5	10.4	11.0	9.7	8.8	9.2	---	---	---
26	11.2	10.0	10.6	11.4	10.1	10.8	9.6	8.3	9.0	---	---	---
27	11.2	10.1	10.6	11.2	9.9	10.6	9.5	8.8	9.1	---	---	---
28	11.2	10.2	10.6	10.5	10.0	10.3	10.2	9.2	9.7	---	---	---
29	---	---	---	10.8	9.7	10.3	10.7	8.9	9.9	---	---	---
30	---	---	---	10.8	---	---	10.3	9.1	9.7	---	---	---
31	---	---	---	---	---	---	---	---	---	---	---	---
<b>Month</b>	12.3	9.2	11.0	11.7	9.6	10.5	10.7	8.1	9.2	13.2	7.9	10.6

## 09406000 VIRGIN RIVER AT VIRGIN, UT—Continued

DISSOLVED OXYGEN, WATER, UNFILTERED, MILLIGRAMS PER LITER  
WATER YEAR OCTOBER 2004 TO SEPTEMBER 2005

Day	Max	Min	Mean	Max	Min	Mean	Max	Min	Mean	Max	Min	Mean
	June			July			August			September		
1	---	---	---	8.8	7.9	8.2	8.3	7.5	7.9	8.9	7.7	8.2
2	---	---	---	8.7	7.8	8.2	8.3	7.5	7.8	8.8	7.7	8.2
3	---	---	---	8.7	7.8	8.2	8.3	7.4	7.9	8.8	7.6	8.2
4	---	---	---	8.6	7.7	8.1	8.1	7.5	7.8	8.7	7.4	8.1
5	---	---	---	8.5	7.6	8.0	8.2	7.4	7.9	8.7	7.6	8.1
6	---	---	---	8.6	7.7	8.1	8.3	7.5	7.9	8.9	7.7	8.2
7	---	---	---	8.6	7.7	8.1	8.2	7.6	7.8	8.9	7.6	8.2
8	---	---	---	8.6	7.7	8.1	8.1	5.5	7.7	8.8	7.6	8.1
9	---	---	---	8.5	7.7	8.0	8.1	6.8	7.7	8.7	7.7	8.1
10	---	---	---	8.4	7.6	8.0	8.1	7.4	7.8	9.0	7.8	8.3
11	---	---	---	8.4	7.2	8.0	8.1	6.7	7.6	9.0	7.8	8.3
12	---	---	---	8.3	7.4	7.9	8.2	7.6	7.8	9.1	7.8	8.4
13	---	---	---	8.2	7.4	7.8	8.2	7.6	7.9	9.2	7.9	8.5
14	---	---	---	8.2	7.3	7.7	8.2	7.1	7.8	9.3	8.0	8.6
15	---	---	---	8.1	7.3	7.6	8.4	7.6	8.0	9.3	7.9	8.6
16	8.8	8.3	---	8.1	6.9	7.6	8.4	7.3	8.0	9.3	8.0	8.6
17	8.8	8.1	8.5	7.9	6.6	7.4	8.3	7.7	8.0	9.4	7.9	8.6
18	8.8	8.1	8.5	8.0	6.6	7.5	8.4	7.7	8.0	9.4	7.8	8.6
19	8.9	8.2	8.5	8.1	7.4	7.8	8.4	7.9	8.2	9.5	7.6	8.7
20	8.9	8.1	8.5	8.1	7.4	7.8	8.5	7.8	8.1	9.3	7.8	8.5
21	8.7	8.2	8.5	7.7	5.9	7.1	8.4	7.7	8.1	8.9	7.7	8.3
22	8.8	8.3	8.6	7.5	6.8	7.2	8.3	7.8	8.0	9.1	7.8	8.4
23	8.8	8.0	8.4	7.7	7.1	7.5	8.3	7.7	8.0	9.1	7.9	8.4
24	8.6	8.0	8.3	7.9	7.4	7.6	8.3	7.8	8.0	9.2	7.9	8.4
25	8.8	8.1	8.5	7.9	7.0	7.5	8.3	7.8	8.1	9.5	8.0	8.7
26	9.1	8.1	8.6	7.8	6.9	7.3	8.3	7.6	8.0	9.5	8.1	8.7
27	9.1	8.1	8.5	7.8	6.9	7.4	8.2	7.5	7.9	9.1	8.1	8.5
28	8.7	8.1	8.4	8.0	7.0	7.5	8.2	7.5	7.9	9.2	8.1	8.6
29	9.1	8.0	8.5	7.9	7.0	7.4	8.2	7.6	7.9	9.4	8.1	8.6
30	8.9	7.8	8.3	8.3	7.2	7.7	8.2	7.6	8.0	9.6	8.2	8.8
31	---	---	---	8.2	7.4	7.8	8.5	7.8	8.2	---	---	---
Month	9.1	7.8	8.5	8.8	5.9	7.7	8.5	5.5	7.9	9.6	7.4	8.4



## 09406000 VIRGIN RIVER AT VIRGIN, UT—Continued

SPECIFIC CONDUCTANCE, WATER, UNFILTERED, MICROSIEMENS PER CENTIMETER AT 25 DEGREES CELSIUS  
WATER YEAR OCTOBER 2004 TO SEPTEMBER 2005

Day	Max	Min	Mean	Max	Min	Mean	Max	Min	Mean	Max	Min	Mean
	October			November			December			January		
1	---	---	---	899	868	886	---	---	---	---	---	---
2	---	---	---	902	856	901	---	---	---	---	---	---
3	---	---	---	866	898	886	---	---	---	---	---	---
4	---	---	---	866	877	868	---	---	---	---	---	---
5	---	---	---	861	871	865	---	---	---	728	---	---
6	---	---	---	863	873	864	---	---	---	754	746	746
7	---	---	---	848	854	851	---	---	---	777	756	766
8	---	---	---	---	---	---	---	---	---	829	---	---
9	---	---	---	---	---	---	824	819	819	---	---	---
10	---	---	---	---	---	---	810	795	805	---	---	---
11	---	---	---	---	---	---	821	813	816	---	---	---
12	---	---	---	---	---	---	825	820	822	---	---	---
13	---	---	---	---	---	---	837	824	825	---	---	---
14	---	---	---	---	---	---	845	821	823	1,070	---	---
15	---	---	---	---	---	---	849	827	830	1,140	998	1,070
16	---	---	---	817	---	---	843	828	834	1,140	999	1,070
17	---	---	---	819	825	822	864	842	847	1,110	1,010	1,060
18	---	---	---	822	826	825	837	844	847	1,090	1,010	1,050
19	914	---	---	827	831	826	847	838	839	1,110	1,010	1,050
20	1,010	420	728	825	830	827	860	834	842	1,100	1,030	1,060
21	601	387	442	833	822	824	841	815	833	1,090	1,000	1,030
22	731	351	566	799	470	632	848	832	841	1,060	995	1,020
23	898	752	856	789	484	696	898	848	876	1,040	989	1,020
24	925	925	926	825	815	822	1,000	902	929	1,010	961	987
25	942	939	943	822	842	833	1,000	887	924	1,010	956	985
26	937	921	928	822	827	825	884	840	863	1,020	688	948
27	1,480	422	867	865	817	819	818	830	825	890	604	710
28	659	369	449	860	292	453	818	810	815	978	741	917
29	819	508	711	---	---	---	---	---	---	1,100	841	956
30	909	790	838	---	---	---	---	---	---	1,090	891	1,020
31	844	840	851	---	---	---	---	---	---	1,200	1,070	1,130
Month	1,480	351	759	902	292	807	1,000	795	843	1,200	604	979

## 09406000 VIRGIN RIVER AT VIRGIN, UT—Continued

SPECIFIC CONDUCTANCE, WATER, UNFILTERED, MICROSIEMENS PER CENTIMETER AT 25 DEGREES CELSIUS  
WATER YEAR OCTOBER 2004 TO SEPTEMBER 2005

Day	Max	Min	Mean	Max	Min	Mean	Max	Min	Mean	Max	Min	Mean
	February			March			April			May		
1	1,210	1,060	1,140	1,290	1,270	1,280	1,010	984	1,000	583	546	569
2	1,240	1,120	1,200	1,260	1,240	1,250	953	959	958	544	485	519
3	1,220	1,080	1,160	1,300	931	1,130	891	886	896	518	456	487
4	---	---	---	1,230	1,190	1,200	888	838	839	504	430	464
5	---	---	---	1,200	1,150	1,190	870	845	856	461	407	429
6	---	---	---	1,160	1,150	1,170	839	843	849	443	397	416
7	---	---	---	1,100	1,080	1,100	814	768	779	534	436	504
8	---	---	---	1,040	1,040	1,050	757	666	685	539	517	528
9	---	---	---	1,000	1,150	1,010	706	698	695	513	421	451
10	---	---	---	964	908	926	760	712	746	444	379	418
11	---	---	---	867	834	854	786	770	776	499	453	480
12	---	---	---	817	806	824	755	755	763	503	467	487
13	---	---	---	799	778	778	738	671	---	490	442	469
14	---	---	---	822	793	808	672	595	623	446	373	411
15	---	---	---	890	849	864	612	562	587	416	353	389
16	---	---	---	914	851	882	570	535	557	377	342	369
17	---	---	---	896	869	892	543	497	521	404	340	367
18	---	---	---	906	875	901	520	479	501	420	365	390
19	---	---	---	905	892	897	496	---	---	403	341	369
20	---	---	---	983	521	660	---	---	---	391	332	358
21	---	---	---	975	603	894	---	---	---	390	333	358
22	---	---	---	972	888	956	585	---	---	395	338	365
23	---	---	---	---	---	---	599	572	588	394	340	364
24	---	---	---	---	---	---	600	365	485	402	312	360
25	1,410	---	---	---	---	---	721	494	562	404	306	363
26	1,430	1,390	1,400	---	---	---	611	573	587	413	351	376
27	1,390	1,320	1,360	---	---	---	566	527	547	413	360	386
28	1,340	1,290	1,320	---	---	---	564	512	534	413	361	388
29	---	---	---	---	---	---	624	478	584	422	366	391
30	---	---	---	983	---	---	605	568	594	430	361	398
31	---	---	---	1,020	999	1,010	---	---	---	445	393	420
Month	1,430	1,060	1,260	1,300	521	979	1,010	365	684	583	306	421

## 09406000 VIRGIN RIVER AT VIRGIN, UT—Continued

**SPECIFIC CONDUCTANCE, WATER, UNFILTERED, MICROSIEMENS PER CENTIMETER AT 25 DEGREES CELSIUS  
WATER YEAR OCTOBER 2004 TO SEPTEMBER 2005**

Day	Max	Min	Mean	Max	Min	Mean	Max	Min	Mean	Max	Min	Mean
	June			July			August			September		
1	422	392	406	700	568	661	782	759	774	791	772	778
2	---	---	---	702	713	703	794	766	782	786	766	778
3	433	344	384	717	712	713	1,120	774	827	788	787	794
4	467	427	447	741	711	724	1,140	759	790	1,200	775	818
5	486	455	470	744	719	727	1,180	678	812	922	777	794
6	474	415	451	752	725	735	806	692	722	793	770	784
7	497	441	471	752	729	738	1,030	514	694	798	772	786
8	530	502	519	766	739	749	2,550	479	897	802	776	788
9	560	515	537	770	741	754	2,240	653	1,010	798	779	792
10	583	555	577	760	753	754	692	605	661	797	786	795
11	566	443	537	773	755	766	931	608	766	805	805	799
12	586	420	514	791	751	769	603	560	586	799	790	800
13	608	502	559	787	753	771	589	584	599	800	786	800
14	612	470	551	800	770	786	908	564	647	801	790	799
15	632	559	605	791	789	784	1,120	751	856	810	798	807
16	615	534	587	798	776	785	804	572	747	801	791	800
17	572	562	569	808	778	794	776	755	760	798	779	796
18	579	574	577	785	788	789	786	757	770	792	787	793
19	594	571	578	791	773	783	779	696	767	809	782	796
20	599	586	586	787	774	782	1,410	711	990	803	790	796
21	605	586	589	1,220	705	811	794	758	777	810	790	798
22	607	588	593	3,790	632	1,040	798	756	774	780	771	776
23	596	598	595	861	809	823	772	767	770	787	773	783
24	613	508	592	815	801	811	770	745	755	805	781	792
25	643	631	621	809	789	797	782	736	759	794	773	790
26	592	605	599	792	779	784	778	745	763	788	786	791
27	600	600	596	778	767	774	784	767	771	807	796	802
28	619	606	601	754	747	755	791	762	776	793	633	788
29	586	589	585	764	761	762	788	774	781	849	772	792
30	596	600	593	779	760	769	784	778	782	801	776	794
31	---	---	---	790	777	782	781	754	768	---	---	---
<b>Month</b>	643	344	548	3,790	568	773	2,550	479	772	1,200	633	793

## 09406000 VIRGIN RIVER AT VIRGIN, UT—Continued

TEMPERATURE, WATER, DEGREES CELSIUS  
WATER YEAR OCTOBER 2004 TO SEPTEMBER 2005

Day	Max	Min	Mean	Max	Min	Mean	Max	Min	Mean	Max	Min	Mean
	October			November			December			January		
1	---	---	---	9.2	5.8	7.4	5.3	2.1	3.6	7.1	5.1	6.0
2	---	---	---	9.5	5.6	7.5	5.7	2.5	4.0	7.3	5.4	6.4
3	---	---	---	10.3	6.3	8.2	5.4	2.4	3.8	7.8	6.5	7.2
4	---	---	---	10.3	7.1	8.7	5.0	2.5	3.7	7.4	6.1	6.9
5	---	---	---	11.4	7.7	9.5	6.0	3.4	4.6	6.1	5.4	5.7
6	---	---	---	11.7	8.1	9.8	8.0	5.4	6.2	6.1	4.1	5.2
7	---	---	---	10.8	9.3	10	6.4	5.5	6.0	4.1	2.7	3.2
8	19.0	12.8	---	10.9	7.3	9.1	7.0	6.2	6.6	4.6	3.0	3.9
9	18.4	13.1	15.8	9.1	7.3	8.0	9.3	6.8	7.8	4.1	3.3	3.8
10	17.1	14.2	15.5	10.3	7.0	8.5	8.7	5.7	7.3	5.1	4.1	4.4
11	17.5	12.5	15.0	10.8	7.6	9.1	8.8	6.0	7.4	5.3	2.9	---
12	18.4	12.9	15.7	10.3	7.3	8.7	8.7	5.7	7.1	3.6	2.0	2.7
13	18.0	13.0	15.5	10.8	7.9	9.1	8.6	5.7	7.1	3.6	1.7	2.6
14	17.1	11.9	14.6	10.6	7.1	8.8	8.7	6.0	7.3	4.9	2.2	3.4
15	16.9	11.3	14.1	10.3	6.8	8.7	7.9	5.3	6.6	5.5	2.4	3.8
16	15.4	11.1	13.3	10.7	7.6	9.3	7.3	4.4	5.9	6.5	3.2	4.8
17	14.3	11.7	13.1	10.8	7.5	9.2	6.5	3.8	5.3	7.6	4.3	5.9
18	14.2	12.4	13.3	10.5	7.3	8.9	7.0	3.9	5.4	7.6	4.4	6.0
19	14.8	12.8	13.7	9.7	6.9	8.4	6.9	3.9	5.4	8.4	4.8	6.5
20	13.8	11.0	12.5	8.8	6.5	7.6	6.6	3.7	5.3	8.7	5.2	6.9
21	11.0	8.8	9.7	6.9	5.7	6.4	7.5	5.2	6.2	8.1	5.3	6.7
22	9.6	7.8	8.6	7.7	6.7	7.2	5.6	3.3	4.4	8.6	4.9	6.7
23	12.3	8.5	10.2	9.0	6.8	7.6	4.2	1.9	2.9	9.0	5.4	7.1
24	13.8	10.5	11.9	8.5	5.6	7.1	3.9	0.8	2.4	8.9	5.6	7.3
25	13.7	11.0	12.1	8.5	5.8	7.1	4.6	1.5	3.0	9.5	6.8	8.0
26	12.3	10.4	11.4	9.7	6.5	7.8	5.5	3.2	4.3	8.4	7.1	7.7
27	11.8	8.1	10.8	8.7	7.2	8.0	6.7	5.2	5.9	7.1	6.1	6.4
28	8.4	6.6	7.5	8.0	4.2	5.8	7.8	6.3	7.0	8.1	6.0	7.0
29	10.5	7.3	8.6	5.3	2.8	3.9	7.5	4.7	6.0	8.0	6.2	7.0
30	10.5	7.1	8.8	4.9	2.0	3.4	6.5	4.3	5.3	8.2	5.2	6.5
31	10.5	7.3	8.7	---	---	---	6.3	5.2	5.7	7.8	4.2	6.0
Month	19.0	6.6	12.2	11.7	2.0	8.0	9.3	0.8	5.5	9.5	1.7	5.7

## 09406000 VIRGIN RIVER AT VIRGIN, UT—Continued

**TEMPERATURE, WATER, DEGREES CELSIUS**  
**WATER YEAR OCTOBER 2004 TO SEPTEMBER 2005**

Day	Max	Min	Mean	Max	Min	Mean	Max	Min	Mean	Max	Min	Mean
	<b>February</b>			<b>March</b>			<b>April</b>			<b>May</b>		
<b>1</b>	7.3	4.1	5.7	11.0	6.0	8.4	12.2	5.8	9.0	11.8	9.0	10.3
<b>2</b>	7.7	---	---	11.3	6.5	8.9	12.7	6.7	9.9	12.3	8.5	10.4
<b>3</b>	8.0	3.8	5.9	11.3	7.0	9.1	13.2	8.4	10.7	12.3	8.2	10.4
<b>4</b>	8.3	4.3	6.2	10.6	6.6	8.8	11.2	8.8	10.1	12.0	7.8	10.2
<b>5</b>	8.4	5.4	6.8	10.5	7.8	9.3	12.0	6.9	9.2	11.5	7.4	8.9
<b>6</b>	8.4	5.3	6.8	12.3	7.1	9.5	12.9	7.3	9.9	9.3	7.2	8.0
<b>7</b>	9.0	7.7	8.3	11.8	6.7	9.4	12.4	8.7	10.5	10.8	7.0	8.7
<b>8</b>	8.3	4.6	6.9	11.8	6.9	9.4	11.6	8.8	10.1	12.6	8.7	10.5
<b>9</b>	7.9	3.9	5.8	12.6	7.5	---	9.2	7.3	8.3	11.2	8.0	9.9
<b>10</b>	7.3	4.5	5.9	12.3	7.6	10	11.2	6.6	8.6	10.4	7.7	8.6
<b>11</b>	7.8	5.9	6.5	11.9	7.5	9.6	11.5	6.7	9.0	10.5	6.3	---
<b>12</b>	7.1	4.7	5.6	11.6	7.4	9.3	12.7	7.8	9.9	11.4	7.6	9.4
<b>13</b>	8.2	6.0	6.9	10.3	7.5	8.7	12.1	---	---	12.2	8.4	10.3
<b>14</b>	9.7	6.9	8.1	9.0	5.8	7.2	11.5	7.9	9.7	12.2	8.6	10.5
<b>15</b>	10.2	7.7	9.0	8.7	3.8	6.1	11.4	7.2	9.3	12.8	8.1	10.6
<b>16</b>	11.4	9.6	10.2	9.2	4.2	6.6	11.6	7.2	9.5	12.8	8.3	9.7
<b>17</b>	11.2	8.7	10.0	9.1	5.3	7.1	11.4	7.1	9.5	10.4	6.4	8.7
<b>18</b>	---	---	---	11.0	5.5	8.2	11.3	7.3	9.5	12.0	7.9	10.1
<b>19</b>	---	---	---	9.6	7.7	8.7	9.8	---	---	13.3	8.6	11.1
<b>20</b>	---	---	---	8.7	5.8	7.4	---	---	---	13.3	8.6	11.2
<b>21</b>	---	---	---	10.5	5.3	7.8	---	---	---	13.2	8.7	11.2
<b>22</b>	---	---	---	9.1	6.9	7.9	---	---	---	13.5	9.0	11.4
<b>23</b>	---	---	---	---	6.2	---	10.4	7.6	9.0	13.8	9.4	11.8
<b>24</b>	---	---	---	---	---	---	10.4	7.2	8.6	13.8	9.6	11.9
<b>25</b>	9.9	---	---	7.1	---	---	10.4	6.9	8.5	14.1	9.8	12.3
<b>26</b>	10.3	5.4	7.7	10.1	4.7	7.2	12.4	8.3	9.9	14.4	10.4	12.6
<b>27</b>	10.2	5.4	7.8	10.8	5.6	8.2	11.0	8.7	9.8	14.1	10.8	12.8
<b>28</b>	9.7	5.8	7.8	9.9	7.6	8.6	9.7	7.6	8.4	14.7	10.9	13.1
<b>29</b>	---	---	---	11.4	6.7	8.9	11.6	6.7	8.8	14.3	11.0	12.9
<b>30</b>	---	---	---	10.9	6.8	---	11.5	8.4	9.9	13.6	10.3	12.2
<b>31</b>	---	---	---	11.3	5.4	8.2	---	---	---	14.3	10.9	12.8
<b>Month</b>	11.4	3.8	7.3	12.6	3.8	8.4	13.2	5.8	9.4	14.7	6.3	10.8

## 09406000 VIRGIN RIVER AT VIRGIN, UT—Continued

**TEMPERATURE, WATER, DEGREES CELSIUS**  
**WATER YEAR OCTOBER 2004 TO SEPTEMBER 2005**

Day	Max	Min	Mean	Max	Min	Mean	Max	Min	Mean	Max	Min	Mean
	June			July			August			September		
<b>1</b>	15.2	11.5	13.5	22.7	16.9	20.3	26.3	21.6	23.8	23.7	17.2	20.5
<b>2</b>	15.3	11.6	13.6	22.9	17.0	20.1	24.8	21.6	23.2	22.9	17.8	20.6
<b>3</b>	14.2	10.9	12.7	23.0	17.4	20.4	25.3	19.9	22.4	23.9	18.5	21.3
<b>4</b>	14.5	11.0	12.7	23.9	17.9	21.0	23.3	20.2	21.9	23.1	18.9	21.2
<b>5</b>	14.8	11.8	13.2	24.2	18.5	21.5	23.7	19.5	21.5	23.6	17.9	20.9
<b>6</b>	15.8	12.3	13.9	23.9	18.2	21.2	24.9	19.1	22.0	23.4	17.5	20.5
<b>7</b>	14.6	11.5	13.1	23.7	18.1	21.0	24.4	19.7	22.3	23.4	17.2	20.4
<b>8</b>	14.6	11.0	12.6	23.8	18.2	21.1	23.8	20.3	21.9	22.5	17.8	20.4
<b>9</b>	13.6	12.3	12.9	24.1	18.7	21.4	23.8	20.1	21.8	22.9	19.0	20.6
<b>10</b>	16.1	11.3	13.4	24.4	18.6	21.6	24.5	20.4	22.4	21.3	15.6	18.5
<b>11</b>	15.5	11.2	13.9	24.9	18.8	21.9	23.3	19.6	21.7	21.2	15.5	18.4
<b>12</b>	15.6	10.3	12.5	25.7	19.9	22.9	24.2	19.4	21.9	20.8	15.0	18.0
<b>13</b>	17.5	12.9	14.9	25.9	20.2	23.1	24.3	19.5	21.7	19.9	13.9	17.0
<b>14</b>	18.4	14.1	16.0	25.9	20.2	23.2	23.0	18.0	20.6	19.5	13.2	16.5
<b>15</b>	19.2	14.8	16.7	25.0	20.9	---	23.4	18.4	20.6	20.1	13.5	16.8
<b>16</b>	19.2	15.1	17.0	26.6	20.1	23.2	22.9	18.5	20.6	19.8	14.0	17.1
<b>17</b>	19.8	14.6	17.1	27.4	21.3	24.3	24.1	18.9	21.4	19.8	13.7	16.8
<b>18</b>	20.2	14.8	17.4	27.4	21.4	24.5	24.0	18.4	21.1	19.0	13.9	16.6
<b>19</b>	20.1	14.7	17.5	27.3	21.5	24.5	21.5	18.5	19.7	20.0	13.5	16.8
<b>20</b>	20.4	15.0	18.0	26.9	21.8	24.3	22.6	16.4	19.4	19.3	14.8	17.3
<b>21</b>	19.1	16.3	17.8	26.8	19.7	23.5	24.1	18.1	21.1	20.6	16.2	18.1
<b>22</b>	19.1	16.0	17.4	26.7	22.1	24.4	22.6	18.9	21.1	21.2	15.5	18.4
<b>23</b>	21.8	16.0	18.7	25.2	22.9	23.9	23.9	18.7	21.2	20.3	15.6	18.0
<b>24</b>	20.9	16.2	18.6	25.5	21.8	23.5	23.9	18.8	21.3	20.4	15.4	17.9
<b>25</b>	19.7	15.7	17.8	27.5	21.6	24.4	23.8	18.9	21.3	19.4	13.7	16.7
<b>26</b>	20.5	14.1	17.5	27.2	21.8	24.4	25.0	18.9	21.9	19.4	13.5	16.6
<b>27</b>	21.0	14.2	17.9	26.3	20.3	23.5	25.1	19.2	22.3	19.5	15.6	17.5
<b>28</b>	20.4	16.3	18.3	26.4	20.1	23.4	25.2	19.0	22.3	19.5	14.5	17.0
<b>29</b>	20.8	14.6	17.9	26.2	21.0	23.4	24.7	18.8	21.9	19.1	14.2	16.8
<b>30</b>	22.0	15.9	19.1	26.2	21.0	23.2	24.2	18.5	21.3	18.7	13.4	16.3
<b>31</b>	---	---	---	25.3	21.4	23.3	23.4	17.0	20.3	---	---	---
<b>Month</b>	22.0	10.3	15.8	27.5	16.9	22.7	26.3	16.4	21.5	23.9	13.2	18.3

## 09406000 VIRGIN RIVER AT VIRGIN, UT—Continued

**TURBIDITY, WATER, UNFILTERED, NEPHELOMETRIC TURBIDITY UNITS**  
**WATER YEAR OCTOBER 2004 TO SEPTEMBER 2005**

Day	Max	Min	Mean	Max	Min	Mean	Max	Min	Mean	Max	Min	Mean
	October			November			December			January		
1	---	---	---	---	---	---	93	35	52	---	---	---
2	---	---	---	---	---	---	160	51	77	---	---	---
3	---	---	---	200	---	---	120	55	86	---	---	---
4	---	---	---	180	120	140	140	58	76	---	---	---
5	---	---	---	160	100	120	120	63	84	1,200	---	---
6	---	---	---	190	100	120	---	---	---	680	110	290
7	---	---	---	140	100	120	---	---	---	820	59	170
8	---	---	---	2,000	120	1,000	110	---	---	2,700	54	700
9	---	---	---	---	---	---	60	27	39	2,800	810	2,300
10	---	---	---	---	---	---	93	29	47	2,600	1,200	2,000
11	---	---	---	---	---	---	74	26	36	2,600	350	990
12	---	---	---	---	---	---	78	24	33	2,500	460	1,700
13	---	---	---	---	---	---	62	24	37	2,500	740	1,700
14	---	---	---	---	---	---	90	21	40	1,200	550	810
15	---	---	---	---	---	---	110	23	38	1,000	---	---
16	---	---	---	180	58	---	45	19	25	---	---	---
17	---	---	---	99	44	64	54	21	33	---	---	---
18	---	---	---	78	41	54	48	26	35	---	---	---
19	---	---	---	68	32	43	42	25	32	---	---	---
20	---	---	---	62	25	37	38	25	30	---	---	---
21	---	---	---	1,100	27	270	47	30	35	---	---	---
22	---	---	---	1,400	95	360	47	30	35	---	---	---
23	---	---	---	270	75	120	41	31	36	---	---	---
24	---	---	---	120	60	78	50	31	38	---	---	---
25	---	---	---	120	56	80	60	33	41	---	---	---
26	---	61	---	130	49	69	46	26	34	---	---	---
27	---	74	---	1,500	43	73	44	25	33	---	---	---
28	---	---	---	2,500	140	740	47	23	30	---	---	---
29	---	---	---	500	66	170	---	---	---	---	---	---
30	---	---	---	120	41	61	---	---	---	---	---	---
31	---	---	---	---	---	---	---	---	---	---	---	---
<b>Month</b>	---	61	---	2,500	25	200	160	19	43	2,800	54	1,200

## 09406000 VIRGIN RIVER AT VIRGIN, UT—Continued

**TURBIDITY, WATER, UNFILTERED, NEPHELOMETRIC TURBIDITY UNITS**  
**WATER YEAR OCTOBER 2004 TO SEPTEMBER 2005**

Day	Max	Min	Mean	Max	Min	Mean	Max	Min	Mean	Max	Min	Mean
	<b>February</b>			<b>March</b>			<b>April</b>			<b>May</b>		
1	---	---	---	290	200	250	160	88	120	---	---	---
2	---	---	---	230	150	190	240	83	150	---	---	---
3	---	---	---	2,100	170	540	500	110	250	---	---	---
4	---	---	---	210	120	170	540	160	310	---	---	---
5	---	---	---	120	58	79	350	130	210	---	---	---
6	---	---	---	77	52	61	220	110	150	---	---	---
7	---	---	---	79	37	56	500	100	250	---	---	---
8	---	---	---	65	26	43	910	160	530	---	---	---
9	---	---	---	94	31	43	340	260	290	---	---	---
10	---	---	---	160	46	90	---	---	---	---	---	---
11	---	---	---	250	49	120	---	---	---	---	250	---
12	---	---	---	190	71	120	---	---	---	370	190	270
13	---	---	---	300	69	150	600	260	---	590	190	300
14	---	---	---	89	39	69	950	250	570	1,700	330	770
15	---	---	---	44	23	35	1,100	360	680	2,500	410	1,100
16	---	---	---	39	---	---	1,200	420	740	2,600	650	1,400
17	---	---	---	---	---	---	1,800	490	1,000	2,700	730	1,600
18	---	---	---	---	---	---	1,800	640	1,100	1,400	460	810
19	---	---	---	---	---	---	1,600	570	1,100	2,100	510	1,100
20	---	---	---	230	---	---	---	---	---	2,900	780	1,700
21	---	---	---	320	37	130	---	---	---	2,800	800	1,800
22	---	---	---	160	34	81	560	380	---	2,500	800	1,600
23	---	---	---	---	32	---	480	320	380	2,600	760	1,500
24	---	---	---	---	---	---	---	---	---	2,700	810	1,600
25	860	---	---	---	100	---	---	---	---	2,400	630	1,300
26	820	460	610	260	29	140	---	---	---	2,200	600	1,300
27	680	360	490	---	---	---	---	---	---	2,000	530	1,100
28	480	260	360	---	---	---	---	---	---	1,500	430	790
29	---	---	---	---	---	---	---	---	---	2,200	410	930
30	---	---	---	210	---	---	---	---	---	2,600	380	1,200
31	---	---	---	190	110	140	---	---	---	1,100	310	610
<b>Month</b>	860	260	490	2,100	23	130	1,800	83	490	2,900	190	1,100



## 09406000 VIRGIN RIVER AT VIRGIN, UT—Continued

**TURBIDITY, WATER, UNFILTERED, NEPHELOMETRIC TURBIDITY UNITS**  
**WATER YEAR OCTOBER 2004 TO SEPTEMBER 2005**

Day	Max	Min	Mean	Max	Min	Mean	Max	Min	Mean	Max	Min	Mean
	June			July			August			September		
1	1,200	290	580	---	---	---	52	28	40	55	31	42
2	1,500	290	690	23	10	16	48	25	36	74	23	35
3	2,500	450	1,300	25	9.9	14	---	---	---	60	22	33
4	750	200	380	18	7.6	12	---	---	---	1,300	19	160
5	400	160	240	19	7.1	11	---	---	---	1,300	31	150
6	680	140	330	16	6.7	10	---	---	---	43	19	28
7	550	130	250	14	6.3	9.3	---	---	---	38	14	21
8	500	87	140	---	---	---	---	---	---	51	16	23
9	240	84	120	---	---	---	---	---	---	32	16	23
10	160	83	100	---	---	---	---	---	---	26	15	20
11	1,000	75	170	---	---	---	---	---	---	---	---	---
12	1,300	110	440	---	---	---	---	---	---	---	---	---
13	240	76	120	---	---	---	---	---	---	---	---	---
14	170	56	98	---	---	---	---	---	---	---	---	---
15	190	54	94	---	---	---	---	---	---	---	---	---
16	140	54	84	---	---	---	---	---	---	---	---	---
17	140	49	69	---	---	---	---	380	---	---	---	---
18	110	46	72	---	6.0	---	420	190	250	---	---	---
19	140	39	52	27	6.2	10	1,700	150	310	---	---	---
20	86	31	42	21	7.4	11	---	---	---	---	---	---
21	---	---	---	2,500	13	730	2,700	500	1,100	38	20	29
22	---	---	---	---	---	---	560	210	310	40	19	28
23	---	---	---	1,900	90	340	250	140	180	41	20	24
24	---	---	---	120	58	85	140	80	110	65	16	22
25	---	---	---	97	61	75	92	60	73	47	14	19
26	---	---	---	240	59	90	71	42	56	25	12	18
27	---	---	---	420	60	130	54	33	41	42	14	23
28	---	---	---	190	57	82	59	36	45	69	22	38
29	---	---	---	80	44	56	57	42	47	52	20	31
30	---	---	---	69	40	49	56	37	46	53	24	34
31	---	---	---	99	34	44	---	---	---	---	---	---
<b>Month</b>	2,500	31	270	2,500	6.0	99	2,700	25	190	1,300	12	40



---

Water-Data Report UT-2005

**09407810 VIRGIN RIVER BELOW ASH CREEK, NEAR LAVERKIN, UT**

Virgin River Basin

LOCATION.--Lat 37°12'07", long 113°17'27" referenced to North American Datum of 1927, in SW ¼ SW ¼ SW ¼ sec.23, T.41 S., R.13 W., Washington County, Hydrologic Unit 15010008, on right bank. Located 0.2 mi downstream from Ash Creek and 1 mi west of LaVerkin.

DRAINAGE AREA.--1,290. mi<sup>2</sup>.

**WATER-DISCHARGE RECORDS**

PERIOD OF RECORD.--April 2004 to January 2005 (discontinued).

GAGE.--Water-stage recorder and crest-stage gage. Elevation of gage is 2,980 ft above NGVD of 1929, from topographic map.

REMARKS.--Records fair except for estimated flows, which are poor.

EXTREMES FOR PERIOD OF RECORD.--Maximum discharge, 21,200 ft<sup>3</sup>/s, Jan 11, 2005, gage height, 18.06 ft, from rating curve extended above 250 ft<sup>3</sup>/s on basis of peak computed discharge at station 09408150 about 8 mi downstream; minimum daily discharge, 18 ft<sup>3</sup>/s, Jul 14, 2004.

EXTREMES FOR CURRENT YEAR.--Maximum discharge, 21,200 ft<sup>3</sup>/s, Jan 11, gage height, 18.06 ft; minimum daily discharge, 55 ft<sup>3</sup>/s, Oct 14.

## 09407810 VIRGIN RIVER BELOW ASH CREEK NEAR LAVERKIN, UT—Continued

**DISCHARGE, CUBIC FEET PER SECOND**  
**WATER YEAR OCTOBER 2004 TO SEPTEMBER 2005**  
**DAILY MEAN VALUES**  
[e, estimated]

Day	Oct	Nov	Dec	Jan	Feb	Mar	Apr	May	Jun	Jul	Aug	Sep
1	74	180	81	170	---	---	---	---	---	---	---	---
2	67	169	78	150	---	---	---	---	---	---	---	---
3	64	170	78	155	---	---	---	---	---	---	---	---
4	61	151	77	210	---	---	---	---	---	---	---	---
5	88	137	78	173	---	---	---	---	---	---	---	---
6	90	126	78	117	---	---	---	---	---	---	---	---
7	92	123	82	109	---	---	---	---	---	---	---	---
8	66	1,630	85	372	---	---	---	---	---	---	---	---
9	68	678	77	7,960	---	---	---	---	---	---	---	---
10	72	358	79	16,200	---	---	---	---	---	---	---	---
11	73	316	80	e18,000	---	---	---	---	---	---	---	---
12	72	302	82	e5,600	---	---	---	---	---	---	---	---
13	56	210	83	e1,600	---	---	---	---	---	---	---	---
14	55	173	86	---	---	---	---	---	---	---	---	---
15	56	e120	83	---	---	---	---	---	---	---	---	---
16	60	e82	81	---	---	---	---	---	---	---	---	---
17	61	76	80	---	---	---	---	---	---	---	---	---
18	82	77	84	---	---	---	---	---	---	---	---	---
19	112	92	87	---	---	---	---	---	---	---	---	---
20	2,190	98	83	---	---	---	---	---	---	---	---	---
21	4,660	111	84	---	---	---	---	---	---	---	---	---
22	1,230	189	85	---	---	---	---	---	---	---	---	---
23	470	132	82	---	---	---	---	---	---	---	---	---
24	378	83	82	---	---	---	---	---	---	---	---	---
25	299	83	87	---	---	---	---	---	---	---	---	---
26	228	72	98	---	---	---	---	---	---	---	---	---
27	470	65	90	---	---	---	---	---	---	---	---	---
28	1,140	288	95	---	---	---	---	---	---	---	---	---
29	349	80	1,220	---	---	---	---	---	---	---	---	---
30	193	76	403	---	---	---	---	---	---	---	---	---
31	215	---	163	---	---	---	---	---	---	---	---	---
<b>Total</b>	13,191	6,447	4,111	---	---	---	---	---	---	---	---	---
<b>Mean</b>	426	215	133	---	---	---	---	---	---	---	---	---
<b>Max</b>	4,660	1,630	1,220	---	---	---	---	---	---	---	---	---
<b>Min</b>	55	65	77	---	---	---	---	---	---	---	---	---
<b>Ac-ft</b>	26,160	12,790	8,150	---	---	---	---	---	---	---	---	---

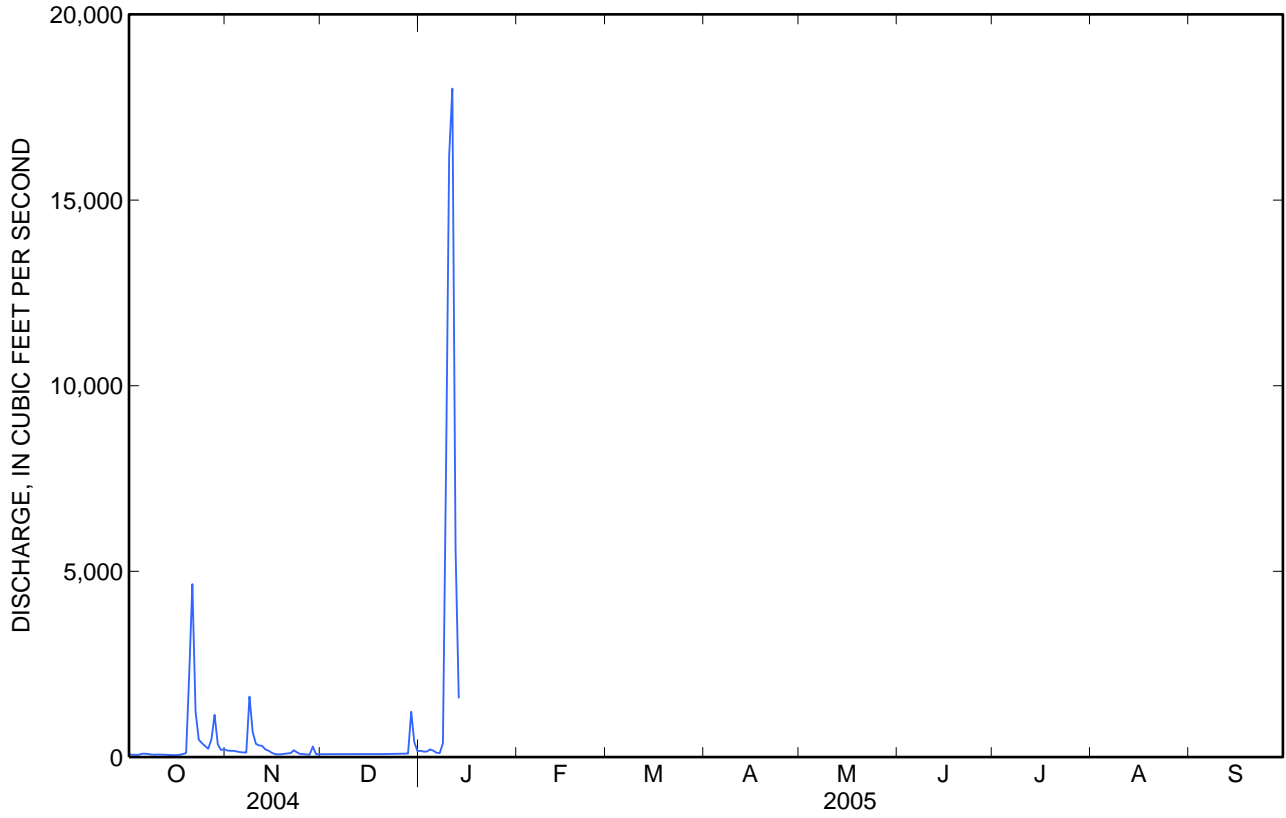
## STATISTICS OF MONTHLY MEAN DATA FOR WATER YEARS 2004 - 2005, BY WATER YEAR (WY)

	Oct	Nov	Dec	Jan	Feb	Mar	Apr	May	Jun	Jul	Aug	Sep
<b>Mean</b>	426	215	133	---	---	---	---	72.5	42.1	38.6	50.4	42.2
<b>Max</b>	426	215	133	---	---	---	---	128	55	166	116	105
<b>(WY)</b>	(2005)	(2005)	(2005)	(---)	(---)	(---)	(---)	(2004)	(2004)	(2004)	(2004)	(2004)
<b>Min</b>	426	215	133	---	---	---	---	55	21	18	26	21
<b>(WY)</b>	(2005)	(2005)	(2005)	(---)	(---)	(---)	(---)	(2004)	(2004)	(2004)	(2004)	(2004)

09407810 VIRGIN RIVER BELOW ASH CREEK NEAR LAVERKIN, UT—Continued

**SUMMARY STATISTICS**

	Water Years 2004 - 2005	
<b>Highest daily mean</b>	18,000	Jan 11, 2005
<b>Lowest daily mean</b>	18	Jul 14, 2004
<b>Annual seven-day minimum</b>	26	Sep 3, 2004



**09407810 VIRGIN RIVER BELOW ASH CREEK NEAR LAVERKIN, UT—Continued**

**WATER-QUALITY RECORDS**

PERIOD OF RECORD.--October 2004 to January 2005 (discontinued).

PERIOD OF DAILY RECORD.--

DISSOLVED OXYGEN: October 2004 to January 2005.

SPECIFIC CONDUCTANCE: October 2004 to January 2005

WATER TEMPERATURE: October 2004 to January 2005.

TURBIDITY: October 2004 to January 2005.

INSTRUMENTATION.--Water-quality monitor from October 2004 to January 2005.

REMARKS.--Dissolved oxygen records poor. Specific conductivity records fair. Temperature records good. Turbidity records poor.

EXTREMES FOR PERIOD OF DAILY RECORD.--

DISSOLVED OXYGEN: Maximum, 12.0 mg/L, Dec. 29, 30, 2004; minimum, 8.2 mg/L, Dec 29, 2004.

SPECIFIC CONDUCTANCE: Maximum, 4,840 microsiemens/cm, Oct 15, 2004; minimum, 130 microsiemens/cm, Nov 8, 2004.

WATER TEMPERATURE: Maximum, 22.2°C, Oct 4, 2004; minimum, 2.5°C, Jan 8, 2005.

TURBIDITY: Maximum, 1,100 FNU, Nov 11, 2004; minimum, 5.0 FNU, Nov 24, 2004.

EXTREMES FOR CURRENT YEAR.--

DISSOLVED OXYGEN: Maximum, 12.0 mg/L, Dec. 29, 30; minimum, 8.2 mg/L, Dec 29.

SPECIFIC CONDUCTANCE: Maximum, 4,840 microsiemens/cm, Oct 15; minimum, 130 microsiemens/cm, Nov 8.

WATER TEMPERATURE: Maximum, 22.2°C, Oct 4, 2004; minimum, 2.5°C, Jan 8.

TURBIDITY: Maximum, 1,100 FNU, Nov 11; minimum, 5.0 FNU, Nov 24.

09407810 VIRGIN RIVER BELOW ASH CREEK NEAR LAVERKIN, UT—Continued

DISSOLVED OXYGEN, WATER, UNFILTERED, MILLIGRAMS PER LITER  
WATER YEAR OCTOBER 2004 TO SEPTEMBER 2005

Day	Max	Min	Mean	Max	Min	Mean	Max	Min	Mean	Max	Min	Mean
	October			November			December			January		
1	---	---	---	---	---	---	11.5	10.8	11.3	11.1	9.7	10.5
2	---	---	---	---	---	---	11.3	10.8	11.1	---	---	---
3	---	---	---	10.3	9.5	9.9	11.4	10.8	11.1	---	---	---
4	---	---	---	10.0	9.3	9.7	11.3	10.7	11.0	11.3	8.8	10.6
5	---	---	---	9.8	9.1	9.5	11.1	10.6	10.8	11.4	10.8	11.1
6	---	---	---	9.6	8.9	9.3	10.6	9.9	10.4	11.0	10.6	10.8
7	---	---	---	9.4	9.1	9.3	10.3	10.0	10.2	11.3	10.9	11.2
8	---	---	---	---	---	---	11.6	9.5	9.9	11.2	11.1	11.1
9	---	---	---	10.7	9.8	10.4	9.6	9.3	9.5	---	---	---
10	---	---	---	10.7	9.9	10.3	9.9	9.4	9.6	---	---	---
11	---	---	---	10.3	9.8	10.0	9.8	9.3	9.5	---	---	---
12	---	---	---	10.4	9.7	10	9.8	9.3	9.6	---	---	---
13	---	---	---	10.0	9.6	9.8	9.9	9.4	9.6	---	---	---
14	---	---	---	10.1	9.5	9.8	10.0	9.4	9.7	---	---	---
15	---	---	---	10.0	9.1	9.5	9.9	8.8	9.5	---	---	---
16	---	---	---	9.5	---	8.8	---	---	---	---	---	---
17	---	---	---	---	---	---	---	---	---	---	---	---
18	---	---	---	---	---	---	---	---	---	---	---	---
19	---	---	---	---	---	---	---	---	---	---	---	---
20	9.7	8.3	9.1	---	---	---	---	---	---	---	---	---
21	---	---	---	---	---	---	---	---	---	---	---	---
22	10.4	8.7	---	---	---	---	---	---	---	---	---	---
23	9.9	---	---	10.9	10.1	10.5	9.0	---	---	---	---	---
24	---	---	---	10.7	9.9	10.4	---	---	---	---	---	---
25	---	---	---	10.6	9.5	10.4	---	---	---	---	---	---
26	---	---	---	10.6	9.7	10.3	---	---	---	---	---	---
27	10.0	8.8	9.3	10.4	9.8	10.1	---	---	---	---	---	---
28	10.8	9.0	10.4	11.6	9.3	11.2	---	---	---	---	---	---
29	10.8	9.1	10.2	11.4	11.1	11.3	12.0	8.2	10.9	---	---	---
30	---	---	---	11.5	11.0	11.3	12.0	9.7	11.4	---	---	---
31	---	---	---	---	---	---	11.2	10.0	10.7	---	---	---
<b>Month</b>	10.8	8.3	9.8	11.6	8.9	10.1	12.0	8.2	10.3	11.4	8.8	10.9

## 09407810 VIRGIN RIVER BELOW ASH CREEK NEAR LAVERKIN, UT—Continued

**SPECIFIC CONDUCTANCE, WATER, UNFILTERED, MICROSIEMENS PER CENTIMETER AT 25 DEGREES CELSIUS  
WATER YEAR OCTOBER 2004 TO SEPTEMBER 2005**

Day	Max	Min	Mean	Max	Min	Mean	Max	Min	Mean	Max	Min	Mean
	October			November			December			January		
1	2,080	1,470	1,770	---	---	---	---	---	---	---	---	---
2	---	---	---	---	---	---	---	---	---	---	---	---
3	---	---	---	1,810	1,490	1,630	---	---	---	---	---	---
4	---	---	---	1,870	1,720	1,770	---	---	---	---	---	---
5	---	---	---	1,970	1,740	1,860	---	---	---	1,400	---	---
6	---	---	---	2,100	1,880	1,970	---	---	---	1,820	1,400	1,610
7	---	---	---	1,980	1,640	1,920	---	---	---	1,470	---	---
8	3,060	---	---	1,730	130	656	1,650	---	---	---	---	---
9	3,120	2,480	2,680	583	374	475	1,710	1,410	1,620	---	---	---
10	2,700	2,370	2,540	741	573	648	1,410	---	---	---	---	---
11	2,680	1,950	2,480	1,290	732	792	---	---	---	---	---	---
12	2,680	1,510	2,400	1,070	748	869	---	---	---	---	---	---
13	3,840	1,910	2,550	1,100	937	1,020	---	---	---	---	---	---
14	3,980	2,720	3,150	1,310	1,100	1,170	---	---	---	---	---	---
15	4,840	2,830	3,170	2,200	1,280	1,600	---	---	---	---	---	---
16	3,220	2,660	2,940	2,640	2,070	2,220	---	---	---	---	---	---
17	3,320	2,320	2,970	2,770	2,280	2,570	---	---	---	---	---	---
18	2,520	2,020	2,340	2,650	1,670	2,340	---	---	---	---	---	---
19	2,240	1,200	1,820	---	---	---	---	---	---	---	---	---
20	1,720	149	511	---	---	---	---	---	---	---	---	---
21	498	201	458	---	---	---	---	---	---	---	---	---
22	599	207	438	---	---	---	---	---	---	---	---	---
23	835	573	696	---	---	---	---	---	---	---	---	---
24	968	813	892	---	---	---	---	---	---	---	---	---
25	1,220	936	1,030	---	---	---	---	---	---	---	---	---
26	1,240	1,060	1,130	---	---	---	---	---	---	---	---	---
27	1,600	145	1,100	---	---	---	---	---	---	---	---	---
28	624	148	377	---	---	---	---	---	---	---	---	---
29	909	462	662	---	---	---	---	---	---	---	---	---
30	1,130	784	959	---	---	---	---	---	---	---	---	---
31	---	---	---	---	---	---	---	---	---	---	---	---
<b>Month</b>	4,840	145	1,700	2,770	130	1,470	1,710	1,410	1,620	1,820	1,400	1,610

## 09407810 VIRGIN RIVER BELOW ASH CREEK NEAR LAVERKIN, UT—Continued

**TEMPERATURE, WATER, DEGREES CELSIUS**  
**WATER YEAR OCTOBER 2004 TO SEPTEMBER 2005**

Day	Max	Min	Mean	Max	Min	Mean	Max	Min	Mean	Max	Min	Mean
	October			November			December			January		
1	21.5	17.3	19.4	---	---	---	9.1	6.4	7.2	9.4	6.6	7.9
2	21.9	17.6	19.8	---	---	---	9.0	6.8	7.5	10.5	8.5	9.4
3	22.0	17.9	19.9	12.4	9.1	10.6	9.4	6.8	7.7	11.4	10.0	10.8
4	22.2	17.6	19.8	13.6	10.3	11.6	9.3	6.9	7.8	11.2	6.9	8.7
5	20.7	17.5	19.3	14.5	11.0	12.5	9.7	7.3	8.4	8.8	6.7	7.8
6	19.9	16.8	18.4	15.3	11.6	13.0	11.8	9.1	9.8	9.7	7.9	8.6
7	19.2	15.9	17.9	13.7	12.5	13.2	10.4	9.6	10.0	7.9	6.6	7.2
8	21.4	16.7	19.1	13.3	8.2	10.8	11.6	9.8	10.7	7.8	2.5	6.3
9	20.6	17.1	19.2	11.6	7.9	8.9	14.0	11.5	12.2	---	---	---
10	19.6	18.0	18.7	10.6	7.9	9.4	13.4	10.7	11.8	---	---	---
11	19.1	16.8	18.1	11.2	9.4	10.3	13.8	10.7	11.9	---	---	---
12	20.5	16.5	18.7	11.1	8.6	10.0	13.7	10.6	11.8	---	---	---
13	20.6	16.8	18.7	11.8	9.9	10.7	13.7	10.4	11.7	---	---	---
14	20.5	16.1	18.3	12.0	9.9	10.8	13.7	10.4	11.7	---	---	---
15	20.7	15.8	18.0	13.3	10.1	11.7	12.9	10.5	11.2	---	---	---
16	18.8	15.3	17.2	15.2	11.5	12.6	13.3	10.4	11.2	---	---	---
17	18.0	16.4	16.9	15.0	11.4	12.9	12.6	9.5	10.8	---	---	---
18	16.7	15.8	16.2	15.1	11.5	13.0	12.9	9.6	10.8	---	---	---
19	16.1	15.6	15.8	13.2	11.0	11.9	12.0	9.3	10.3	---	---	---
20	16.0	10.8	11.9	12.4	9.8	11.0	12.8	9.4	10.7	---	---	---
21	11.9	9.5	11.3	10.9	9.0	9.6	11.9	9.3	10.6	---	---	---
22	11.7	8.5	9.7	9.6	7.8	8.8	10.5	7.8	8.8	---	---	---
23	12.1	9.0	10.6	11.0	8.0	9.4	10.0	6.8	8.2	---	---	---
24	13.8	11.8	12.6	12.2	9.3	10.2	10.2	7.1	8.3	---	---	---
25	14.6	12.7	13.4	11.7	9.6	10.4	10.6	7.5	8.5	---	---	---
26	13.8	12.7	13.2	12.7	10.2	11.1	9.6	7.9	8.8	---	---	---
27	13.8	8.6	12.4	12.9	10.9	11.8	12.2	9.6	10.7	---	---	---
28	11.0	7.3	8.2	11.7	6.9	7.9	12.6	11.3	11.9	---	---	---
29	10.9	7.3	9.0	8.8	6.6	7.2	11.8	5.2	6.9	---	---	---
30	12.0	8.5	9.9	9.3	6.5	7.5	10.1	4.7	6.2	---	---	---
31	11.5	9.4	10.3	---	---	---	9.0	7.0	8.0	---	---	---
<b>Month</b>	22.2	7.3	15.5	15.3	6.5	10.7	14.0	4.7	9.7	11.4	2.5	8.3



## 09407810 VIRGIN RIVER BELOW ASH CREEK NEAR LAVERKIN, UT—Continued

**TURBIDITY, WATER, UNFILTERED, NEPHELOMETRIC TURBIDITY UNITS**  
**WATER YEAR OCTOBER 2004 TO SEPTEMBER 2005**

Day	Max	Min	Mean	Max	Min	Mean	Max	Min	Mean	Max	Min	Mean
	October			November			December			January		
1	200	---	---	---	---	---	130	20	38	550	60	220
2	---	---	---	200	---	---	60	18	27	---	---	---
3	---	---	---	220	42	86	50	14	25	---	---	---
4	---	---	---	250	48	76	39	11	20	---	---	---
5	---	---	---	140	41	63	28	12	19	---	---	---
6	---	---	---	130	35	49	140	14	24	120	55	77
7	---	---	---	240	33	62	64	11	20	96	38	60
8	190	---	---	---	---	---	50	15	22	---	40	---
9	160	---	---	---	---	---	25	9.0	17	---	---	---
10	---	---	---	860	320	530	40	9.0	15	---	---	---
11	---	---	---	1,100	180	300	40	9.0	15	---	---	---
12	---	---	---	1,000	100	430	21	8.0	14	---	---	---
13	---	---	---	140	48	78	19	7.0	13	---	---	---
14	---	---	---	62	42	52	27	8.0	14	---	---	---
15	---	---	---	130	34	48	180	10	22	---	---	---
16	---	---	---	150	---	---	64	9.0	16	---	---	---
17	---	---	---	110	---	---	22	8.0	12	---	---	---
18	---	---	---	330	29	51	21	7.0	14	---	---	---
19	---	---	---	---	---	---	27	7.0	13	---	---	---
20	---	---	---	---	---	---	61	8.0	15	---	---	---
21	---	---	---	---	---	---	25	7.0	14	---	---	---
22	---	---	---	---	---	---	65	8.0	18	---	---	---
23	---	---	---	17	6.0	8.9	55	10	17	---	---	---
24	---	---	---	130	5.0	39	25	8.0	15	---	---	---
25	320	120	230	120	19	34	170	9.0	32	---	---	---
26	380	67	160	38	15	26	55	15	30	---	---	---
27	300	66	100	200	14	28	32	10	19	---	---	---
28	---	---	---	---	57	---	120	8.0	26	---	---	---
29	1,000	430	720	180	56	100	---	---	---	---	---	---
30	940	160	360	240	26	55	---	---	---	---	---	---
31	---	---	---	---	---	---	---	78	---	---	---	---
<b>Month</b>	1,000	66	310	1,100	5.0	110	180	7.0	20	550	38	120



Water-Data Report UT-2005

**09408000 LEEDS CREEK NEAR LEEDS, UT**

Virgin River Basin

LOCATION.--Lat 37°16'03", long 113°22'12" referenced to North American Datum of 1927, in SW ¼ SE ¼ NE ¼ sec.36, T.40 S., R.14 W., Washington County, Hydrologic Unit 15010008, on left bank 1,150 ft upstream from Leeds Ditch diversion, 2.1 mi north of Leeds, and 4.4 mi upstream from mouth.

DRAINAGE AREA.--15.5 mi<sup>2</sup>.

**WATER-DISCHARGE RECORDS**

PERIOD OF RECORD.--October 1915 to June 1920 (fragmentary) in reports of Geological Survey; October 1964 to current year.

GAGE.--Water-stage recorder. Crest-stage gage since May 30, 1989. Elevation of gage is 4,000 ft above NGVD of 1929, from topographic map. Prior to June 1920, at various sites and datums about 600 ft downstream; October 28, 1964, to August 20, 1967, water-stage recorder at site 1,000 ft downstream at different datum.

REMARKS.--Records good. Diversion of spring area for domestic use about 4 mi upstream of gage.

EXTREMES FOR PERIOD OF RECORD.--Maximum discharge, 4,420 ft<sup>3</sup>/s, Aug 3, 1988, gage height, 9.41 ft, from rating curve extended above 33 ft<sup>3</sup>/s on basis of slope-area measurement; minimum daily discharge, 0.79 ft<sup>3</sup>/s, Aug 22, 23, 25, and 26, 2002.

EXTREMES OUTSIDE PERIOD OF RECORD.--Flood of Aug 12, 1964 reached a stage of 6.00 ft, former site and datum, discharge 2,980 ft<sup>3</sup>/s from slope-area measurement of peak flow.

EXTREMES FOR CURRENT YEAR.--Peak discharges greater than base discharge of 50 ft<sup>3</sup>/s and (or) maximum (\*):

Date	Time	Discharge (ft <sup>3</sup> /s)	Gage height (ft)
Oct 20	2115	266	4.28
Nov 08	0745	88	3.15
Dec 29	1245	116	3.45
Jan 11	1305	*2,230	*7.67
Jan 27	0815	167	3.54
Feb 11	2330	235	3.92
Feb 18	2045	249	3.99
Mar 23	0645	74	3.34
Jun 03	0645	66	3.25
Aug 12	1920	425	4.68

Minimum daily discharge, 3.2 ft<sup>3</sup>/s, on several days.

## 09408000 LEEDS CREEK NEAR LEEDS, UT—Continued

**DISCHARGE, CUBIC FEET PER SECOND**  
**WATER YEAR OCTOBER 2004 TO SEPTEMBER 2005**  
**DAILY MEAN VALUES**

Day	Oct	Nov	Dec	Jan	Feb	Mar	Apr	May	Jun	Jul	Aug	Sep
1	3.5	9.6	8.5	10	24	17	19	34	46	43	22	13
2	3.4	9.2	8.5	9.9	22	18	19	34	51	43	22	13
3	3.4	9.2	8.5	10	21	18	19	34	59	43	22	13
4	3.3	9.0	8.5	13	20	19	20	32	56	42	22	13
5	3.5	9.0	8.5	11	20	19	20	31	56	44	21	13
6	3.4	9.0	8.5	10	19	20	19	32	53	44	21	12
7	3.3	9.1	8.6	9.9	19	20	20	31	52	43	20	12
8	3.3	36	8.8	22	18	21	21	30	49	41	20	12
9	3.3	14	8.7	199	18	21	22	30	45	40	21	11
10	3.2	11	8.7	335	18	24	22	29	46	39	20	11
11	3.2	11	8.7	593	76	27	21	29	50	38	20	11
12	3.2	11	8.7	103	88	29	21	29	47	37	62	11
13	3.2	10	8.7	33	29	31	21	28	44	36	39	11
14	3.2	10	8.7	25	23	31	22	27	42	34	22	11
15	3.2	10	8.7	21	22	30	22	28	41	33	21	11
16	3.2	9.7	8.7	19	20	29	23	28	40	32	20	10
17	3.2	9.4	8.7	19	19	29	25	28	40	31	19	10
18	3.4	9.2	8.7	20	67	28	26	27	41	31	18	9.7
19	3.6	9.1	8.7	21	143	28	26	27	42	30	18	9.5
20	58	9.0	8.7	24	70	32	26	28	41	29	18	9.3
21	50	9.0	8.7	24	29	29	26	29	43	28	17	9.3
22	28	9.0	8.7	23	48	28	25	30	43	28	17	9.1
23	15	8.8	8.7	24	40	51	25	32	43	27	16	8.9
24	13	8.6	8.6	24	25	36	30	33	44	26	16	8.6
25	11	8.5	8.6	25	21	31	30	34	43	26	16	8.6
26	9.6	8.5	8.5	46	19	25	28	35	43	25	15	8.5
27	10	8.6	8.5	80	18	23	27	37	43	24	15	8.5
28	17	8.9	9.1	33	17	23	28	38	43	23	15	8.4
29	12	8.5	55	40	---	22	31	40	44	23	14	8.3
30	11	8.5	16	30	---	21	32	42	43	23	14	8.1
31	11	---	11	26	---	20	---	44	---	23	14	---
<b>Total</b>	308.6	310.4	324.2	1,882.8	973	800	716	990	1,373	1,029	637	312.8
<b>Mean</b>	9.95	10.3	10.5	60.7	34.8	25.8	23.9	31.9	45.8	33.2	20.5	10.4
<b>Max</b>	58	36	55	593	143	51	32	44	59	44	62	13
<b>Min</b>	3.2	8.5	8.5	9.9	17	17	19	27	40	23	14	8.1
<b>Ac-ft</b>	612	616	643	3,730	1,930	1,590	1,420	1,960	2,720	2,040	1,260	620

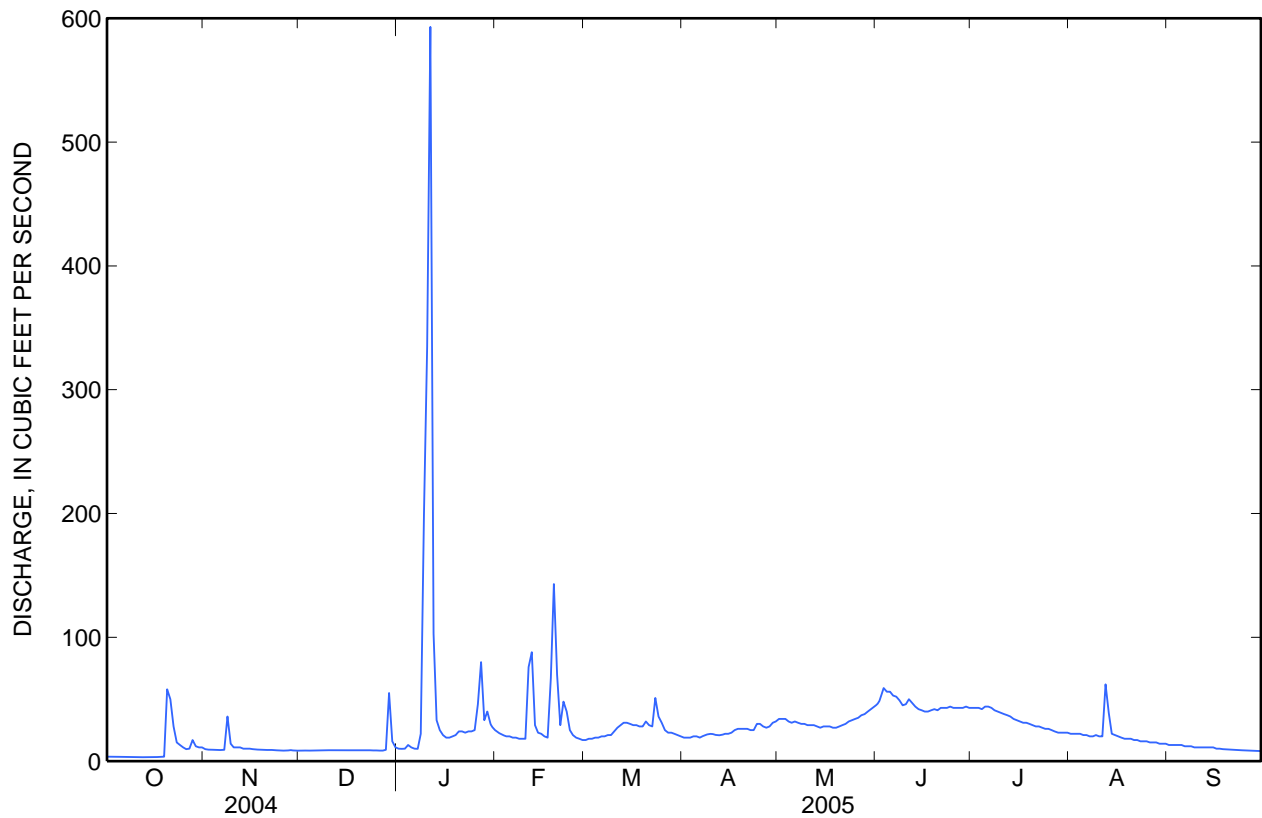
**STATISTICS OF MONTHLY MEAN DATA FOR WATER YEARS 1965 - 2005, BY WATER YEAR (WY)**

	Oct	Nov	Dec	Jan	Feb	Mar	Apr	May	Jun	Jul	Aug	Sep
<b>Mean</b>	4.03	4.16	4.61	5.82	6.93	9.39	9.73	10.9	13.5	10.9	7.13	4.66
<b>Max</b>	9.95	10.8	26.6	60.7	52.0	36.3	33.1	31.9	45.8	34.3	21.6	12.5
<b>(WY)</b>	(2005)	(1988)	(1967)	(2005)	(1980)	(1983)	(1969)	(2005)	(2005)	(1983)	(1988)	(1983)
<b>Min</b>	1.17	1.58	1.60	1.61	2.00	2.37	2.00	1.95	1.37	0.98	0.84	0.99
<b>(WY)</b>	(2003)	(2003)	(2003)	(2003)	(2003)	(2002)	(1977)	(2002)	(2002)	(2002)	(2002)	(2002)

09408000 LEEDS CREEK NEAR LEEDS, UT—Continued

SUMMARY STATISTICS

	Calendar Year 2004		Water Year 2005		Water Years 1965 - 2005	
<b>Annual total</b>	2,633.5		9,656.8			
<b>Annual mean</b>	7.20		26.5		7.65	
<b>Highest annual mean</b>					26.5	2005
<b>Lowest annual mean</b>					2.07	2002
<b>Highest daily mean</b>	58	Oct 20	593	Jan 11	593	Jan 11, 2005
<b>Lowest daily mean</b>	2.5	Jan 1	3.2	Oct 10	0.79	Aug 22, 2002
<b>Annual seven-day minimum</b>	2.5	Jan 8	3.2	Oct 10	0.79	Aug 22, 2002
<b>Annual runoff (ac-ft)</b>	5,220		19,150		5,540	
<b>10 percent exceeds</b>	11		43		17	
<b>50 percent exceeds</b>	6.9		21		4.6	
<b>90 percent exceeds</b>	2.8		8.6		2.3	



**09408135 VIRGIN RIVER ABOVE QUAIL CREEK, NEAR HURRICANE, UT**

Virgin River Basin

LOCATION.--Lat 37°11'28", long 113°21'19" referenced to North American Datum of 1927, in NE ¼ NE ¼ SW ¼ sec.30, T.41 S., R.13 W., Washington County, Hydrologic Unit 15010008, with permission of Interstate Rock Products, on left bank. Located 2.4 mi upstream of Quail Creek, 3.9 mi northwest of Hurricane, and 4.3 mi upstream of State Highway 9 bridge over Virgin River.

DRAINAGE AREA.--1,314 mi<sup>2</sup>.

**WATER-DISCHARGE RECORDS**

PERIOD OF RECORD.--February 1989 to September 1990, April 1992 to September 1993, April 2004 to current year.

GAGE.--Water-stage recorder and crest-stage gage. Elevation of gage is 2,820 ft above NGVD of 1929, from topographic map. February 15, 1989 to September 30, 1990 at site 1.0 mi downstream at different datum. April 9, 1992 to September 30, 1990 at site 2.0 mi downstream at different datum.

REMARKS.--Records good except for period from Jan 10 to Sep 30 and estimated daily discharges, which are poor. Many diversion upstream of gage. Since June 1985 diversions are made about 11 mi upstream into a pipeline that feeds Quail Creek Reservoir 2.4 mi downstream of gage.

EXTREMES FOR PERIOD OF RECORD.--Maximum discharge, 21,200 ft<sup>3</sup>/s, Jan. 10, 2005, gage height, 20.93 ft, from rating curve extended above 7,220 ft<sup>3</sup>/s on basis of slope-area measurement at gage height 18.68 ft; minimum daily discharge, 20 ft<sup>3</sup>/s, Jul 25-27, 1990.

EXTREMES FOR CURRENT YEAR.--Maximum discharge, 21,200 ft<sup>3</sup>/s, Jan 10, gage height, 20.93 ft; minimum daily discharge, 56 ft<sup>3</sup>/s, Oct 14 .

## 09408135 VIRGIN RIVER ABOVE QUAIL CREEK, NEAR HURRICANE, UT—Continued

**DISCHARGE, CUBIC FEET PER SECOND**  
**WATER YEAR OCTOBER 2004 TO SEPTEMBER 2005**  
**DAILY MEAN VALUES**

[e, estimated]

Day	Oct	Nov	Dec	Jan	Feb	Mar	Apr	May	Jun	Jul	Aug	Sep
1	81	72	93	139	488	824	758	1,660	1,110	203	150	100
2	71	68	86	99	412	770	811	1,740	e1,100	198	180	102
3	66	86	87	95	386	923	923	1,870	e1,300	194	188	102
4	67	85	85	165	368	758	1,050	2,130	946	194	216	102
5	83	91	86	202	367	691	1,010	e2,300	e895	172	191	102
6	80	95	85	175	336	686	1,020	2,370	e889	145	189	91
7	88	104	86	172	338	699	1,170	1,960	e800	143	170	89
8	62	1,380	86	301	370	704	1,370	1,820	634	138	187	90
9	64	530	70	e7,800	293	717	1,420	2,170	637	138	380	93
10	69	221	70	e9,500	260	796	1,300	2,280	668	137	275	95
11	70	185	67	e13,500	732	913	1,220	1,910	732	138	511	96
12	70	192	66	e3,500	1,720	925	1,250	1,750	947	136	272	91
13	58	173	65	e1,300	1,080	1,010	1,340	e1,600	702	157	311	99
14	56	159	64	e1,100	682	913	1,480	1,990	e600	163	232	106
15	57	122	62	762	593	771	1,600	2,060	e530	182	281	107
16	62	83	57	867	546	717	1,710	e2,200	e460	198	233	107
17	62	84	57	779	468	683	1,860	2,350	e440	185	160	105
18	83	80	57	696	845	641	2,090	e2,000	e420	173	106	107
19	117	89	61	636	1,720	628	2,360	e2,200	e400	151	103	112
20	e2,000	93	58	621	1,870	1,140	1,890	e2,300	e370	151	131	109
21	e5,500	103	57	582	1,380	874	1,730	e2,400	e310	197	112	115
22	1,220	169	57	536	1,610	760	1,620	2,260	e300	200	101	115
23	264	157	57	492	1,660	1,440	1,560	e2,100	e300	172	100	110
24	188	109	57	492	1,290	1,380	2,600	e2,000	306	175	104	113
25	178	108	59	409	1,150	1,440	2,180	e1,850	276	166	101	109
26	171	105	67	457	1,090	1,130	1,870	e1,750	260	163	102	114
27	374	99	62	1,230	995	1,020	1,730	e1,650	216	153	99	113
28	1,080	247	64	839	906	974	1,770	e1,550	207	144	102	122
29	264	97	984	986	---	943	1,740	e1,450	212	142	100	133
30	144	85	377	792	---	919	1,650	e1,350	205	139	99	129
31	108	---	157	562	---	783	---	e1,250	---	147	98	---
<b>Total</b>	12,857	5,271	3,446	49,786	23,955	27,572	46,082	60,270	17,172	5,094	5,584	3,178
<b>Mean</b>	415	176	111	1,606	856	889	1,536	1,944	572	164	180	106
<b>Max</b>	5,500	1,380	984	13,500	1,870	1,440	2,600	2,400	1,300	203	511	133
<b>Min</b>	56	68	57	95	260	628	758	1,250	205	136	98	89
<b>Ac-ft</b>	25,500	10,460	6,840	98,750	47,510	54,690	91,400	119,500	34,060	10,100	11,080	6,300

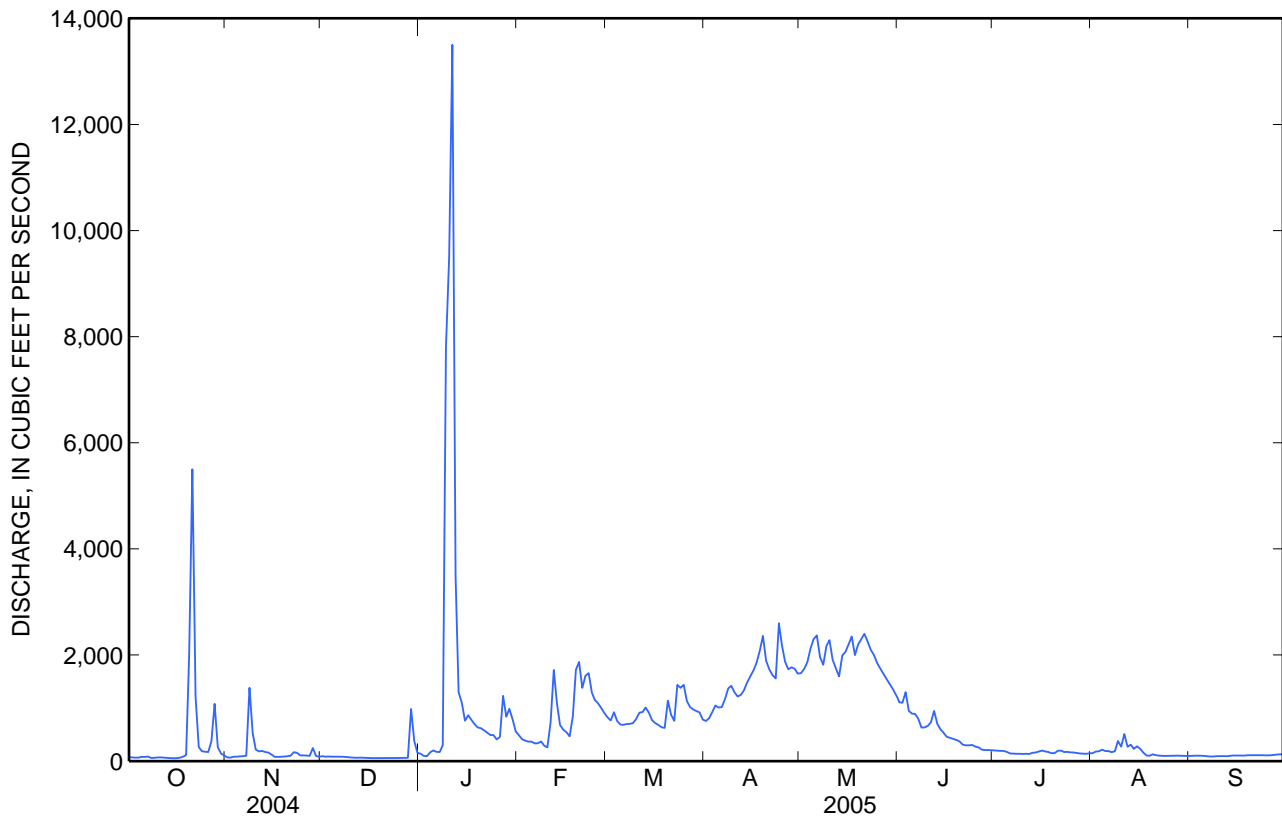
## STATISTICS OF MONTHLY MEAN DATA FOR WATER YEARS 1990 - 2005, BY WATER YEAR (WY)

	Oct	Nov	Dec	Jan	Feb	Mar	Apr	May	Jun	Jul	Aug	Sep
<b>Mean</b>	204	111	81.8	687	542	575	898	661	182	75.8	98.8	80.5
<b>Max</b>	415	176	111	1,606	856	889	1,536	1,944	572	164	180	112
<b>(WY)</b>	(2005)	(2005)	(2005)	(2005)	(2005)	(2005)	(2005)	(2005)	(2005)	(2005)	(2005)	(1993)
<b>Min</b>	75.1	54.7	46.7	104	76.2	54.6	53.1	44.0	40.8	34.5	54.6	49.2
<b>(WY)</b>	(1990)	(1990)	(1990)	(1990)	(1990)	(1990)	(1990)	(1990)	(1990)	(1990)	(2004)	(2004)

09408135 VIRGIN RIVER ABOVE QUAIL CREEK, NEAR HURRICANE, UT—Continued

**SUMMARY STATISTICS**

	Water Year 2005		Water Years 1990 - 2005	
<b>Annual total</b>	260,267			
<b>Annual mean</b>	713		392	
<b>Highest annual mean</b>			713	2005
<b>Lowest annual mean</b>			58.9	1990
<b>Highest daily mean</b>	13,500	Jan 11	13,500	Jan 11, 2005
<b>Lowest daily mean</b>	56	Oct 14	20	Jul 25, 1990
<b>Annual seven-day minimum</b>	58	Dec 16	22	Jul 21, 1990
<b>Annual runoff (ac-ft)</b>	516,200		283,700	
<b>10 percent exceeds</b>	1,760		1,170	
<b>50 percent exceeds</b>	272		103	
<b>90 percent exceeds</b>	80		43	





**09408150 VIRGIN RIVER NEAR HURRICANE, UT**

Virgin River Basin

LOCATION.--Lat 37°10'20", long 113°23'07" referenced to North American Datum of 1927, in NE ¼ SE ¼ SE ¼ sec.35, T.41 S., R.14 W., Washington County, Hydrologic Unit 15010008, Bureau of Land Management, on right bank 0.6 mi downstream from Quail Creek Reservoir Dam, 1.2 mi upstream from State Highway 9, and 5.2 mi west of Hurricane.

DRAINAGE AREA.--1,493 mi<sup>2</sup>.

**WATER-DISCHARGE RECORDS**

REVISED RECORDS.--WDR UT-78-1 and WDR UT-94-1: Drainage area.

PERIOD OF RECORD.--March 1967 to February 1989, October 1990 to current year.

GAGE.--Water-stage recorder and crest-stage gage. Elevation of gage is 2,800 ft above NGVD of 1929, from topographic map. March 20, 1967 to February 14, 1989 at site 1.2 mi downstream at different datum and October 1, 1990 to March 30, 1993 at site 1.3 mi downstream at different datum.

REMARKS.--Records good except for estimated periods, which are poor. Since 1985, flow diverted about 14 mi upstream into a pipeline that feeds Quail Creek Reservoir, an offstream site 0.6 mi upstream of gage. Flow subject to releases from Quail Creek Reservoir.

EXTREMES FOR PERIOD OF RECORD.--Maximum discharge, about 66,000 ft<sup>3</sup>/s, Jan 1, 1989, from slope-area measurement of Quail Creek Reservoir dike failure; minimum daily discharge, 22 ft<sup>3</sup>/s, Aug 29, 2002.

EXTREMES OUTSIDE PERIOD OF RECORD.--Maximum stage known since at least 1909, 17.34 ft, Dec 6, 1966, from floodmarks; discharge, 20,100 ft<sup>3</sup>/s, site and datum established in Mar 1967, from slope-area measurement.

EXTREMES FOR CURRENT YEAR.--Peak discharges greater than base discharge of 2,100 ft<sup>3</sup>/s and (or) maximum (\*):

Date	Time	Discharge (ft <sup>3</sup> /s)	Gage height (ft)
Oct 21	0445	7,590	16.50
Oct 27	2300	3,670	10.53
Nov 08	1110	5,800	13.77
Dec 29	1435	5,050	12.63
Jan 11	1100	*21,000	*19.36
Feb 12	0230	3,050	12.77
Feb 19	0215	2,950	12.69
Feb 23	0030	2,450	12.23
Mar 23	0900	2,860	12.10
May 21	1120	4,140	13.20

Minimum daily discharge, 53 ft<sup>3</sup>/s, Dec 24.



## 09408150 VIRGIN RIVER NEAR HURRICANE, UT—Continued

**DISCHARGE, CUBIC FEET PER SECOND**  
**WATER YEAR OCTOBER 2004 TO SEPTEMBER 2005**  
**DAILY MEAN VALUES**

[e, estimated]

Day	Oct	Nov	Dec	Jan	Feb	Mar	Apr	May	Jun	Jul	Aug	Sep
1	78	60	85	e140	e550	721	772	1,610	1,150	195	154	100
2	67	88	82	e110	e525	704	799	1,770	1,190	183	169	101
3	65	116	82	e100	e510	821	865	1,940	1,400	171	208	104
4	60	91	82	e140	e500	721	925	2,100	1,080	165	223	104
5	80	84	84	e150	e500	686	876	2,460	930	156	211	105
6	81	74	89	135	e480	690	862	2,550	908	150	206	97
7	88	79	93	125	e480	705	969	2,140	819	147	186	95
8	63	1,270	94	349	e500	712	1,190	1,840	715	146	189	95
9	63	580	74	8,000	e450	736	1,230	2,100	663	144	333	95
10	67	182	74	9,880	e420	790	1,110	2,230	639	142	258	99
11	69	e180	71	13,700	e575	855	1,000	1,840	664	140	415	99
12	69	e175	70	3,680	1,920	885	1,010	1,680	910	134	267	95
13	57	e165	69	1,280	1,210	945	1,090	1,650	641	137	285	103
14	55	e150	69	1,080	789	895	1,260	2,000	e575	135	236	108
15	56	e115	65	e900	731	812	1,410	2,110	e550	150	270	108
16	64	e80	58	e700	714	772	1,530	2,290	518	166	236	107
17	62	64	57	e550	678	743	1,800	2,410	447	160	181	107
18	84	60	58	e400	983	732	1,980	2,040	411	155	119	107
19	111	152	64	e350	1,900	719	2,160	2,160	372	148	114	112
20	2,290	73	59	348	1,800	1,150	1,680	2,340	e350	143	143	109
21	5,700	81	56	353	1,230	941	1,470	2,480	e330	185	125	113
22	2,170	172	55	369	1,410	863	1,520	2,310	e310	189	113	116
23	197	205	54	387	1,510	1,690	1,440	2,180	e320	169	108	110
24	e175	121	53	386	1,110	1,530	2,540	2,150	311	176	114	114
25	e200	137	56	391	928	1,630	2,330	2,000	286	167	108	110
26	e210	136	70	397	844	1,150	2,010	1,910	270	160	108	115
27	343	116	61	1,350	792	1,010	1,960	1,760	235	153	104	111
28	897	390	64	915	742	964	1,970	1,620	221	143	106	119
29	129	118	976	992	---	915	1,810	1,530	219	141	103	131
30	60	74	309	814	---	868	1,580	1,440	206	140	102	125
31	60	---	e160	614	---	789	---	1,220	---	149	99	---
<b>Total</b>	13,770	5,388	3,393	49,085	24,781	28,144	43,148	61,860	17,640	4,839	5,593	3,214
<b>Mean</b>	444	180	109	1,583	885	908	1,438	1,995	588	156	180	107
<b>Max</b>	5,700	1,270	976	13,700	1,920	1,690	2,540	2,550	1,400	195	415	131
<b>Min</b>	55	60	53	100	420	686	772	1,220	206	134	99	95
<b>Ac-ft</b>	27,310	10,690	6,730	97,360	49,150	55,820	85,580	122,700	34,990	9,600	11,090	6,370

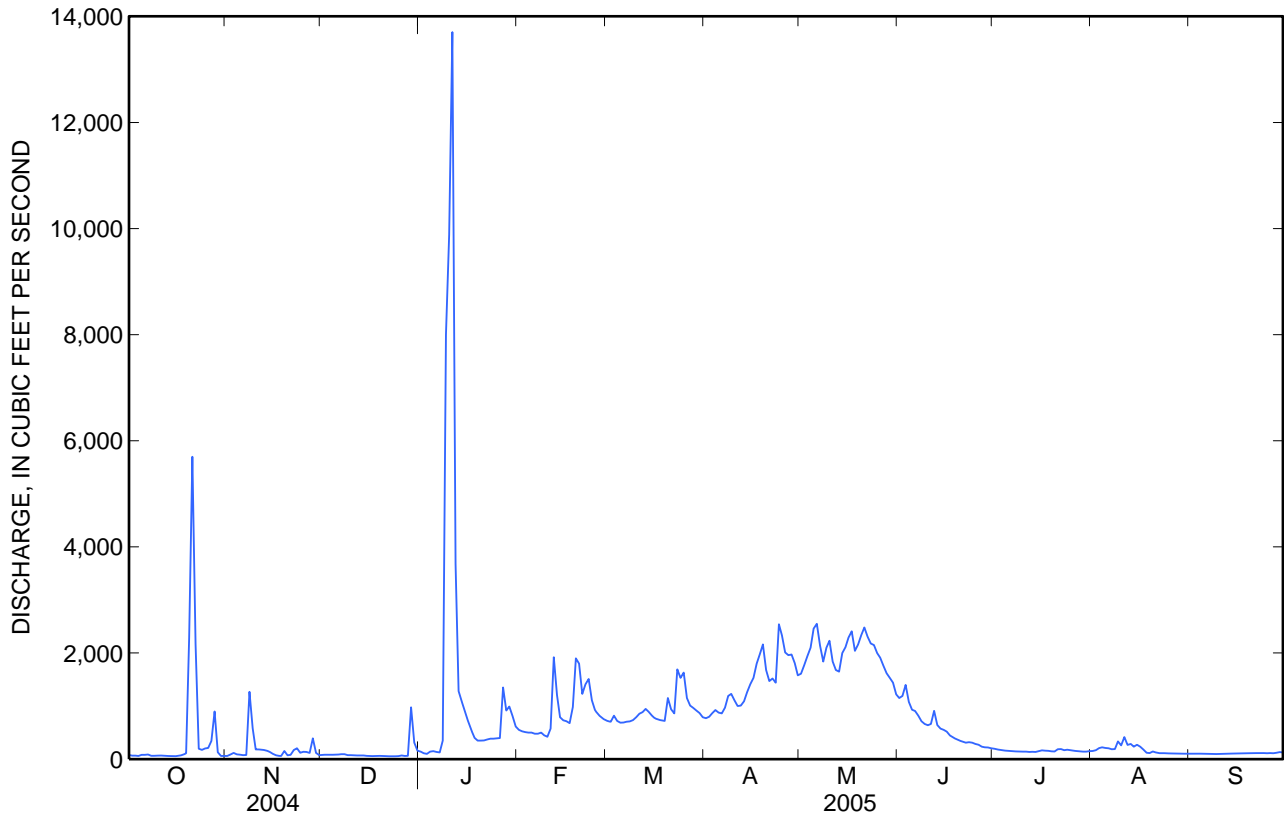
## STATISTICS OF MONTHLY MEAN DATA FOR WATER YEARS 1967 - 2005, BY WATER YEAR (WY)

	Oct	Nov	Dec	Jan	Feb	Mar	Apr	May	Jun	Jul	Aug	Sep
<b>Mean</b>	128	140	157	230	249	326	409	492	192	111	120	126
<b>Max</b>	444	280	440	1,583	1,200	1,178	1,438	1,995	869	248	316	330
<b>(WY)</b>	(2005)	(1988)	(1972)	(2005)	(1980)	(1978)	(2005)	(2005)	(1983)	(1983)	(1983)	(1998)
<b>Min</b>	54.2	56.4	51.4	58.9	59.8	64.0	62.5	56.5	41.3	44.3	41.0	52.4
<b>(WY)</b>	(1991)	(1991)	(1987)	(1991)	(1991)	(2002)	(1977)	(2002)	(2003)	(2003)	(2002)	(2003)

09408150 VIRGIN RIVER NEAR HURRICANE, UT—Continued

SUMMARY STATISTICS

	Calendar Year 2004		Water Year 2005		Water Years 1967 - 2005	
Annual total	46,176		260,855			
Annual mean	126		715		223	
Highest annual mean					715	2005
Lowest annual mean					71.7	2002
Highest daily mean	5,700	Oct 21	13,700	Jan 11	13,700	Jan 11, 2005
Lowest daily mean	37	Sep 1	53	Dec 24	22	Aug 29, 2002
Annual seven-day minimum	50	Aug 29	57	Dec 19	26	Aug 23, 2002
Annual runoff (ac-ft)	91,590		517,400		161,700	
10 percent exceeds	160		1,860		422	
50 percent exceeds	72		270		127	
90 percent exceeds	55		72		62	



**09408195 FORT PEARCE WASH NEAR ST. GEORGE, UT**

Virgin River Basin

LOCATION.--Lat 37°00'06", long 113°28'05" referenced to North American Datum of 1927, in NE ¼ NE ¼ SW ¼ sec.31, T.43 S., R.14 W., Washington County, Hydrologic Unit 15010009, on left bank 20 ft upstream of road crossing, 0.12 mi north of Arizona-Utah boundary, and about 10 mi southeast of St. George.

DRAINAGE AREA.--1,349 mi<sup>2</sup>.

**WATER-DISCHARGE RECORDS**

REVISED RECORDS.--WDR UT-88-1: Drainage area. WDR UT-03-1: 2002(M).

PERIOD OF RECORD.--October 1984 to September 1989, May 2001 to current year. Published as Fort Pierce Wash near St. George, October 1984 to September 1989.

GAGE.--Water-stage recorder and crest-stage gage. Elevation of gage is 2,800 ft above NGVD of 1929, from topographic map.

REMARKS.--Records good.

EXTREMES FOR PERIOD OF RECORD.--Maximum discharge, 9,790 ft<sup>3</sup>/s, Aug 15, 2003, gage height, 12.17 ft from rating curve extended above 500 ft<sup>3</sup>/s on basis of slope-area measurement of peak flow; no flow for extended periods most years.

EXTREMES FOR CURRENT YEAR.--Maximum discharge, 6,980 ft<sup>3</sup>/s, Aug 3, gage height, 11.11 ft; no flow on many days .

## 09408195 FORT PEARCE WASH NEAR ST. GEORGE, UT—Continued

**DISCHARGE, CUBIC FEET PER SECOND**  
**WATER YEAR OCTOBER 2004 TO SEPTEMBER 2005**  
**DAILY MEAN VALUES**

[e, estimated]

Day	Oct	Nov	Dec	Jan	Feb	Mar	Apr	May	Jun	Jul	Aug	Sep
1	15	0.00	0.00	0.00	0.00	0.00	0.00	0.01	0.00	0.00	0.00	0.00
2	0.34	0.00	0.00	0.00	0.00	0.00	0.00	0.00	0.00	0.00	7.8	0.00
3	0.00	0.00	0.00	0.00	0.00	1.1	0.00	0.00	0.00	0.00	263	0.00
4	0.00	0.00	0.00	0.00	0.00	0.25	0.00	0.00	0.00	0.00	11	0.00
5	0.00	0.00	0.00	0.00	0.00	0.44	0.00	0.00	0.00	0.00	0.00	0.00
6	0.00	0.00	0.00	0.00	0.00	0.00	0.00	0.00	0.00	0.00	0.00	0.00
7	0.00	0.00	0.00	0.00	0.00	0.00	0.00	0.00	0.00	0.00	0.00	0.00
8	0.00	0.00	0.00	0.00	0.00	0.00	0.00	0.00	0.00	0.00	0.00	0.00
9	0.00	0.00	0.00	e10	0.00	0.00	0.00	0.00	0.00	0.00	6.1	0.00
10	0.00	0.02	0.00	e175	0.00	0.00	0.00	0.00	0.00	0.00	19	0.00
11	0.00	0.00	0.00	e425	0.00	0.00	0.00	0.00	0.00	0.00	1.3	0.00
12	0.00	0.00	0.00	e275	12	0.00	0.00	0.00	0.00	0.00	0.00	0.00
13	0.00	0.00	0.00	e150	21	0.00	0.00	0.00	0.00	0.00	0.00	0.00
14	0.00	0.00	0.00	e70	2.2	0.00	0.00	0.00	0.00	0.00	3.5	0.00
15	0.00	0.00	0.00	24	0.07	0.00	0.00	0.00	0.00	0.00	20	0.00
16	0.00	0.00	0.00	5.3	0.00	0.00	0.00	0.00	0.00	0.00	0.00	0.00
17	0.00	0.00	0.00	1.0	0.00	0.00	0.00	0.00	0.00	0.00	0.00	0.00
18	0.00	0.00	0.00	0.01	0.15	0.00	0.00	0.00	0.00	0.00	0.00	0.00
19	0.00	0.00	0.00	0.00	37	0.00	0.00	0.00	0.00	0.00	61	0.00
20	0.00	0.00	0.00	0.00	37	7.8	0.00	0.00	0.00	0.00	6.4	0.00
21	335	0.00	0.00	0.00	9.8	13	0.00	0.00	0.00	0.00	0.00	0.00
22	254	0.00	0.00	0.00	2.9	0.77	0.00	0.00	0.00	0.00	0.00	0.00
23	27	0.00	0.00	0.00	25	0.05	0.00	0.00	0.00	0.00	0.00	0.00
24	2.1	0.00	0.00	0.00	6.7	1.3	2.6	0.00	0.00	0.00	0.00	0.00
25	0.00	0.00	0.00	0.00	2.0	0.02	19	0.00	0.00	0.00	0.00	0.00
26	0.00	0.00	0.00	0.00	0.01	3.2	3.8	0.00	0.00	0.00	0.00	0.00
27	0.00	0.00	0.00	0.01	0.00	0.82	0.34	0.00	0.00	0.00	0.00	0.00
28	6.3	0.00	0.00	0.00	0.00	0.00	0.00	0.00	0.00	0.00	0.00	0.00
29	26	0.00	e10	0.72	---	0.00	9.5	0.00	0.00	0.00	0.00	0.00
30	8.0	0.00	e40	0.20	---	0.00	3.6	0.00	0.00	0.00	0.00	0.00
31	0.11	---	e20	0.56	---	0.00	---	0.00	---	0.00	0.00	---
<b>Total</b>	673.85	0.02	70.00	1,136.80	155.83	28.75	38.84	0.01	0.00	0.00	399.10	0.00
<b>Mean</b>	21.7	0.00	2.26	36.7	5.57	0.93	1.29	0.00	0.00	0.00	12.9	0.00
<b>Max</b>	335	0.02	40	425	37	13	19	0.01	0.00	0.00	263	0.00
<b>Min</b>	0.00	0.00	0.00	0.00	0.00	0.00	0.00	0.00	0.00	0.00	0.00	0.00
<b>Ac-ft</b>	1,340	0.04	139	2,250	309	57	77	0.02	0.00	0.00	792	0.00

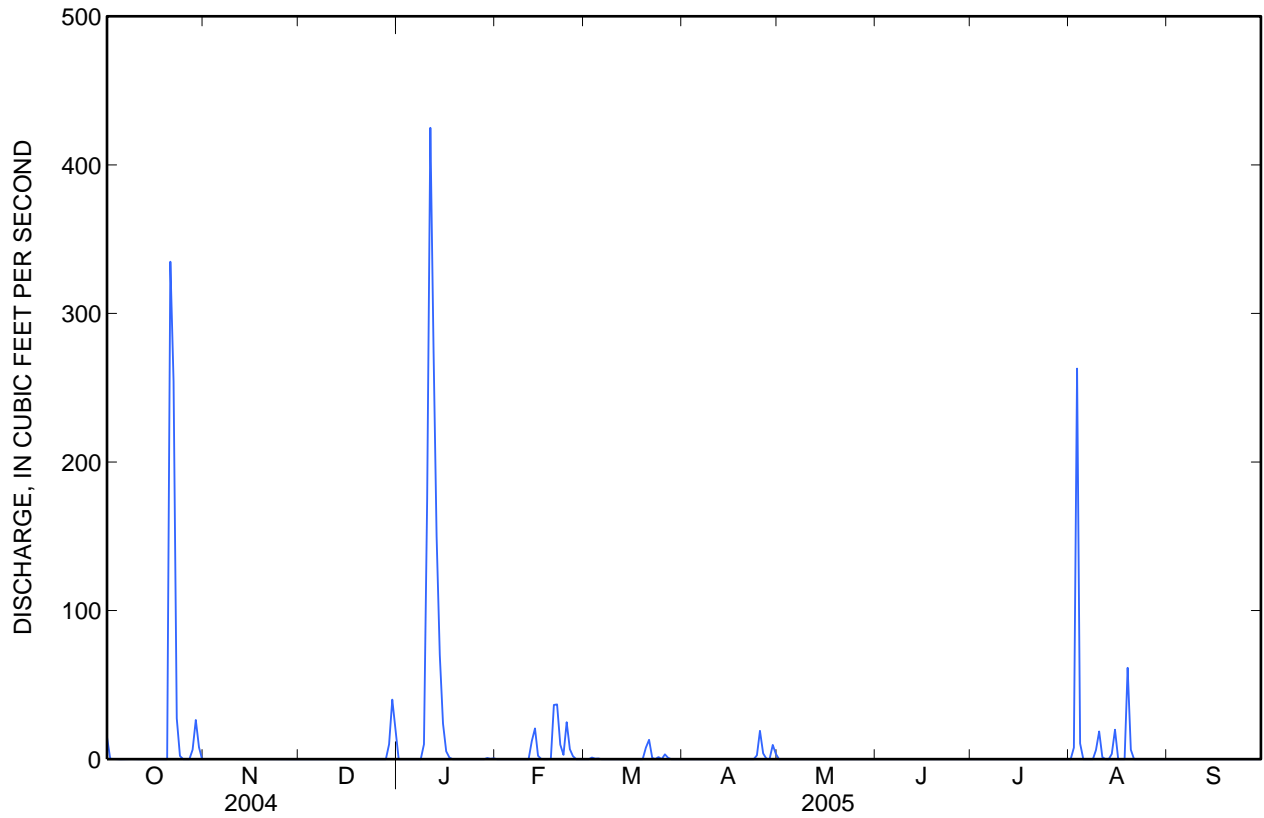
## STATISTICS OF MONTHLY MEAN DATA FOR WATER YEARS 1985 - 2005, BY WATER YEAR (WY)

	Oct	Nov	Dec	Jan	Feb	Mar	Apr	May	Jun	Jul	Aug	Sep
<b>Mean</b>	3.09	0.58	0.27	4.09	0.64	0.13	0.22	0.05	0.20	1.72	9.44	1.42
<b>Max</b>	21.7	2.47	2.26	36.7	5.57	0.93	1.29	0.44	1.77	8.45	60.8	10.4
<b>(WY)</b>	(2005)	(2004)	(2005)	(2005)	(2005)	(2005)	(2005)	(1987)	(1988)	(2003)	(2003)	(2004)
<b>Min</b>	0.00	0.00	0.00	0.00	0.00	0.00	0.00	0.00	0.00	0.00	0.00	0.00
<b>(WY)</b>	(1989)	(1986)	(1986)	(1986)	(1987)	(1987)	(1986)	(1986)	(1986)	(1989)	(1985)	(1985)

09408195 FORT PEARCE WASH NEAR ST. GEORGE, UT—Continued

SUMMARY STATISTICS

	Calendar Year 2004		Water Year 2005		Water Years 1985 - 2005	
<b>Annual total</b>	1,699.25		2,503.20			
<b>Annual mean</b>	4.64		6.86		1.95	
<b>Highest annual mean</b>					6.86	2005
<b>Lowest annual mean</b>					0.07	1986
<b>Highest daily mean</b>	335	Oct 21	425	Jan 11	498	Aug 22, 2003
<b>Lowest daily mean</b>	0.00	Jan 1	0.00	Oct 3	0.00	Oct 26, 1984
<b>Annual seven-day minimum</b>	0.00	Jan 1	0.00	Oct 3	0.00	Oct 26, 1984
<b>Annual runoff (ac-ft)</b>	3,370		4,970		1,410	
<b>10 percent exceeds</b>	0.00		5.6		0.07	
<b>50 percent exceeds</b>	0.00		0.00		0.00	
<b>90 percent exceeds</b>	0.00		0.00		0.00	





Water-Data Report UT-2005

**09408400 SANTA CLARA RIVER NEAR PINE VALLEY, UT**

Virgin River Basin

LOCATION.--Lat 37°23'00", long 113°28'57" referenced to North American Datum of 1927, in NW ¼ SE ¼ NE ¼ sec.24, T.39 S., R.15 W., Washington County, Hydrologic Unit 15010008, Dixie National Forest, on right bank 150 ft upstream from highway bridge, 0.6 mi downstream from Pine Valley Reservoir, 1.6 mi southeast of town of Pine Valley, and 2.5 mi upstream from Grass Valley Creek.

DRAINAGE AREA.--18.7 mi<sup>2</sup>.

**WATER-DISCHARGE RECORDS**

PERIOD OF RECORD.--July 1959 to current year.

GAGE.--Water-stage recorder. Elevation of gage is 6,640 ft above NGVD of 1929, from topographic map.

REMARKS.--Records good except for discharges less than 2 ft<sup>3</sup>/s and estimated daily discharges, which are poor. Flow slightly regulated by Pine Valley Reservoir. No diversions above station.

EXTREMES FOR PERIOD OF RECORD.--Maximum discharge, 776 ft<sup>3</sup>/s, Dec 6, 1966, gage height, 6.85 ft; maximum gage height 8.69 ft, Oct. 20, 2005, (backwater); minimum daily discharge, 0.19 ft<sup>3</sup>/s, Aug 15, 2002.

EXTREMES FOR CURRENT YEAR.--Peak discharges greater than base discharge of 60 ft<sup>3</sup>/s and (or) maximum (\*):

Date	Time	Discharge (ft <sup>3</sup> /s)	Gage height (ft)
Oct 20	2045	--	*7.75
Nov 08	0630	--	7.62
Jan 11	1200	84	2.76
May 24	2145	221	3.82

Minimum daily discharge, 1.9 ft<sup>3</sup>/s, Oct 17.

## 09408400 SANTA CLARA RIVER NEAR PINE VALLEY, UT—Continued

**DISCHARGE, CUBIC FEET PER SECOND**  
**WATER YEAR OCTOBER 2004 TO SEPTEMBER 2005**  
**DAILY MEAN VALUES**

[e, estimated]

Day	Oct	Nov	Dec	Jan	Feb	Mar	Apr	May	Jun	Jul	Aug	Sep
1	2.4	16	10	8.5	13	11	16	46	150	77	32	18
2	2.3	14	8.6	7.9	13	12	18	51	159	78	32	17
3	2.2	13	7.4	7.8	12	13	21	57	179	84	32	17
4	2.2	12	10	8.0	12	13	22	64	148	93	32	17
5	2.3	11	9.6	7.2	12	12	20	76	136	91	30	16
6	2.2	11	9.3	7.0	12	13	21	76	141	68	30	16
7	2.1	25	9.0	6.9	12	14	25	65	127	70	29	16
8	2.1	e280	8.6	7.7	11	16	29	58	111	70	29	15
9	2.1	108	8.2	e11	11	19	29	62	108	69	29	15
10	2.1	62	8.1	28	10	23	26	69	102	69	30	15
11	2.2	46	8.2	57	15	25	24	60	119	69	28	14
12	2.1	37	8.4	32	18	27	25	56	121	71	28	14
13	2.1	32	8.6	23	15	28	28	60	118	69	27	14
14	2.1	28	8.5	20	15	25	32	73	122	68	32	13
15	2.1	25	8.4	18	15	22	36	86	137	69	29	13
16	2.0	22	8.2	17	14	20	42	109	138	57	26	e13
17	1.9	21	7.9	17	14	19	50	116	130	48	25	13
18	2.2	19	7.7	17	16	18	59	108	132	59	24	12
19	2.9	18	7.5	17	17	18	60	133	126	57	24	12
20	e400	17	7.4	19	16	19	47	166	122	57	23	12
21	261	16	7.2	19	15	17	40	181	113	56	23	12
22	83	15	6.9	18	15	17	39	182	107	54	22	11
23	47	15	6.4	18	14	22	39	183	110	54	22	11
24	35	14	6.6	18	13	19	62	188	111	49	21	11
25	28	14	6.4	18	13	18	57	176	103	40	21	11
26	23	13	6.3	20	12	17	53	161	91	38	20	10
27	25	14	6.2	19	12	17	53	162	85	36	20	11
28	24	13	6.7	17	12	19	54	167	82	35	19	10
29	21	12	16	17	---	18	49	173	79	33	19	10
30	19	8.7	11	15	---	17	45	168	77	33	19	9.8
31	18	---	9.4	14	---	16	---	150	---	32	18	---
<b>Total</b>	1,025.6	951.7	258.7	530.0	379	564	1,121	3,482	3,584	1,853	795	398.8
<b>Mean</b>	33.1	31.7	8.35	17.1	13.5	18.2	37.4	112	119	59.8	25.6	13.3
<b>Max</b>	400	280	16	57	18	28	62	188	179	93	32	18
<b>Min</b>	1.9	8.7	6.2	6.9	10	11	16	46	77	32	18	9.8
<b>Ac-ft</b>	2,030	1,890	513	1,050	752	1,120	2,220	6,910	7,110	3,680	1,580	791

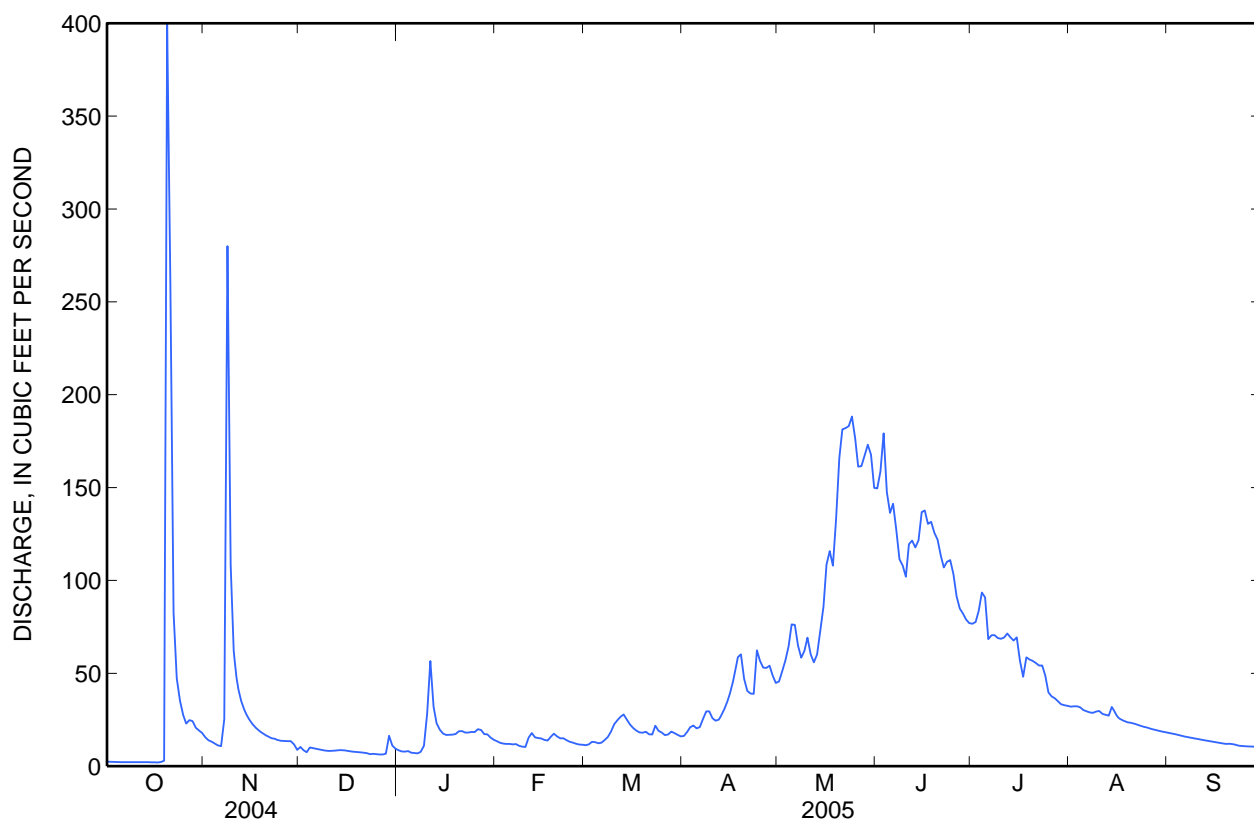
**STATISTICS OF MONTHLY MEAN DATA FOR WATER YEARS 1960 - 2005, BY WATER YEAR (WY)**

	Oct	Nov	Dec	Jan	Feb	Mar	Apr	May	Jun	Jul	Aug	Sep
<b>Mean</b>	3.98	4.24	3.57	2.88	3.26	6.64	16.8	33.8	25.7	11.4	6.16	4.10
<b>Max</b>	33.1	31.7	30.3	17.1	13.5	24.8	43.4	122	126	59.8	25.6	13.3
<b>(WY)</b>	(2005)	(2005)	(1967)	(2005)	(2005)	(1995)	(1969)	(1973)	(1983)	(2005)	(2005)	(2005)
<b>Min</b>	0.65	0.95	0.96	0.85	0.68	1.20	1.20	0.67	0.33	0.27	0.23	0.43
<b>(WY)</b>	(2003)	(1978)	(2003)	(2002)	(1990)	(1977)	(2002)	(2002)	(2002)	(2002)	(2002)	(2002)

09408400 SANTA CLARA RIVER NEAR PINE VALLEY, UT—Continued

SUMMARY STATISTICS

	Calendar Year 2004		Water Year 2005		Water Years 1960 - 2005	
<b>Annual total</b>	4,296.2		14,942.8			
<b>Annual mean</b>	11.7		40.9		10.2	
<b>Highest annual mean</b>					40.9	2005
<b>Lowest annual mean</b>					1.17	2002
<b>Highest daily mean</b>	400	Oct 20	400	Oct 20	400	Oct 20, 2004
<b>Lowest daily mean</b>	1.2	Feb 9	1.9	Oct 17	0.19	Aug 15, 2002
<b>Annual seven-day minimum</b>	1.3	Feb 7	2.1	Oct 11	0.21	Aug 12, 2002
<b>Annual runoff (ac-ft)</b>	8,520		29,640		7,420	
<b>10 percent exceeds</b>	21		111		24	
<b>50 percent exceeds</b>	6.3		19		3.8	
<b>90 percent exceeds</b>	1.5		7.9		1.4	





**09409100 SANTA CLARA RIVER ABOVE BAKER RESERVOIR, NEAR CENTRAL, UT**

Virgin River Basin

LOCATION.--Lat 37°23'05", long 113°37'52" referenced to North American Datum of 1927, in SW ¼ NW ¼ NE ¼ sec.22, T.39 S., R.16 W., Washington County, Hydrologic Unit 15010008, on left bank 0.6 mi downstream from Kane Spring Draw, 0.8 mi upstream from Baker Dam, 2.6 mi south of Central and 4.0 mi north of Veyo.

DRAINAGE AREA.--116 mi<sup>2</sup>.

**WATER-DISCHARGE RECORDS**

PERIOD OF RECORD.--October 1989 to current year.

GAGE.--Water-stage recorder. Elevation of gage is 4,875 ft above NGVD of 1929, from topographic map.

REMARKS.--Records good except for estimated daily discharges and flows less than 2.0 ft<sup>3</sup>/s, which are poor. Diversion 0.5 mi upstream for power generation.

EXTREMES FOR PERIOD OF RECORD.--Maximum discharge, 1,700 ft<sup>3</sup>/s (estimated), Oct. 21, 2004, gage height, 6.80 ft, from rating curve extended above 190 ft<sup>3</sup>/s on basis of slope-area measurement at gage height 2.28 ft and velocity-area measurement at gage height 3.99 ft; minimum daily discharge, 0.08 ft<sup>3</sup>/s, Aug 9-14, 2002 and Aug 10, 11, 2003.

EXTREMES OUTSIDE PERIOD OF RECORD.--Flood of Dec 6, 1966 reached a discharge of 2,080 ft<sup>3</sup>/s, from flow over dam measurement.

EXTREMES FOR CURRENT YEAR.--Maximum discharge, 1,700 ft<sup>3</sup>/s, Oct 21 (estimated, explained above), gage height, 6.80 ft; minimum daily discharge, 0.66 ft<sup>3</sup>/s, Sep 27, 28, 29.

## 09409100 SANTA CLARA RIVER ABOVE BAKER RESERVOIR, NEAR CENTRAL, UT—Continued

**DISCHARGE, CUBIC FEET PER SECOND**  
**WATER YEAR OCTOBER 2004 TO SEPTEMBER 2005**  
**DAILY MEAN VALUES**

[e, estimated]

Day	Oct	Nov	Dec	Jan	Feb	Mar	Apr	May	Jun	Jul	Aug	Sep
1	4.6	27	22	22	13	12	9.6	73	187	89	13	1.8
2	4.5	24	21	21	12	7.5	11	81	194	86	13	1.6
3	4.5	22	20	19	9.5	7.1	13	86	236	81	16	1.4
4	4.5	21	22	19	4.4	7.1	14	91	205	80	26	1.3
5	4.6	19	23	18	4.5	5.4	12	110	187	77	22	1.2
6	4.7	18	24	17	4.2	5.4	11	122	184	72	20	1.1
7	4.7	21	21	16	4.7	6.4	14	107	179	66	18	1.0
8	4.6	319	20	21	3.8	9.2	23	94	161	62	20	1.0
9	4.6	165	20	166	3.2	14	28	95	151	61	33	1.0
10	4.7	122	19	284	2.8	26	23	105	145	56	42	1.0
11	4.9	103	19	321	9.8	32	23	96	162	55	36	1.0
12	4.9	96	19	110	58	32	21	86	169	51	40	0.91
13	4.9	93	20	70	28	34	22	85	159	46	45	0.80
14	4.9	86	19	55	19	27	27	98	163	45	68	0.80
15	5.2	74	19	47	17	22	32	108	179	42	55	0.80
16	5.1	67	19	42	16	19	40	133	184	40	40	0.80
17	5.3	62	18	38	12	17	54	149	172	37	37	0.80
18	5.3	57	18	37	22	16	72	154	166	32	35	0.80
19	5.4	53	18	36	53	15	91	172	164	29	27	0.80
20	e439	45	18	38	69	18	72	201	156	27	15	0.80
21	e436	41	17	39	30	16	58	225	148	26	10	0.80
22	134	39	16	37	29	16	54	231	137	26	10	0.80
23	81	36	13	37	21	51	55	235	139	24	10	0.80
24	64	32	13	35	15	47	110	236	140	33	8.1	0.80
25	52	30	17	38	12	38	117	229	136	28	7.4	0.77
26	42	29	17	40	10	21	104	205	120	23	7.0	0.71
27	59	29	16	38	8.8	16	92	198	109	20	6.8	0.66
28	79	30	16	23	8.5	23	101	206	102	17	4.4	0.66
29	45	25	147	18	---	24	95	209	95	14	2.5	0.66
30	34	22	46	16	---	18	77	212	90	12	2.3	0.66
31	32	---	26	14	---	11	---	192	---	13	1.9	---
<b>Total</b>	1,588.9	1,807	743	1,732	500.2	613.1	1,475.6	4,624	4,719	1,370	691.4	28.03
<b>Mean</b>	51.3	60.2	24.0	55.9	17.9	19.8	49.2	149	157	44.2	22.3	0.93
<b>Max</b>	439	319	147	321	69	51	117	236	236	89	68	1.8
<b>Min</b>	4.5	18	13	14	2.8	5.4	9.6	73	90	12	1.9	0.66
<b>Ac-ft</b>	3,150	3,580	1,470	3,440	992	1,220	2,930	9,170	9,360	2,720	1,370	56

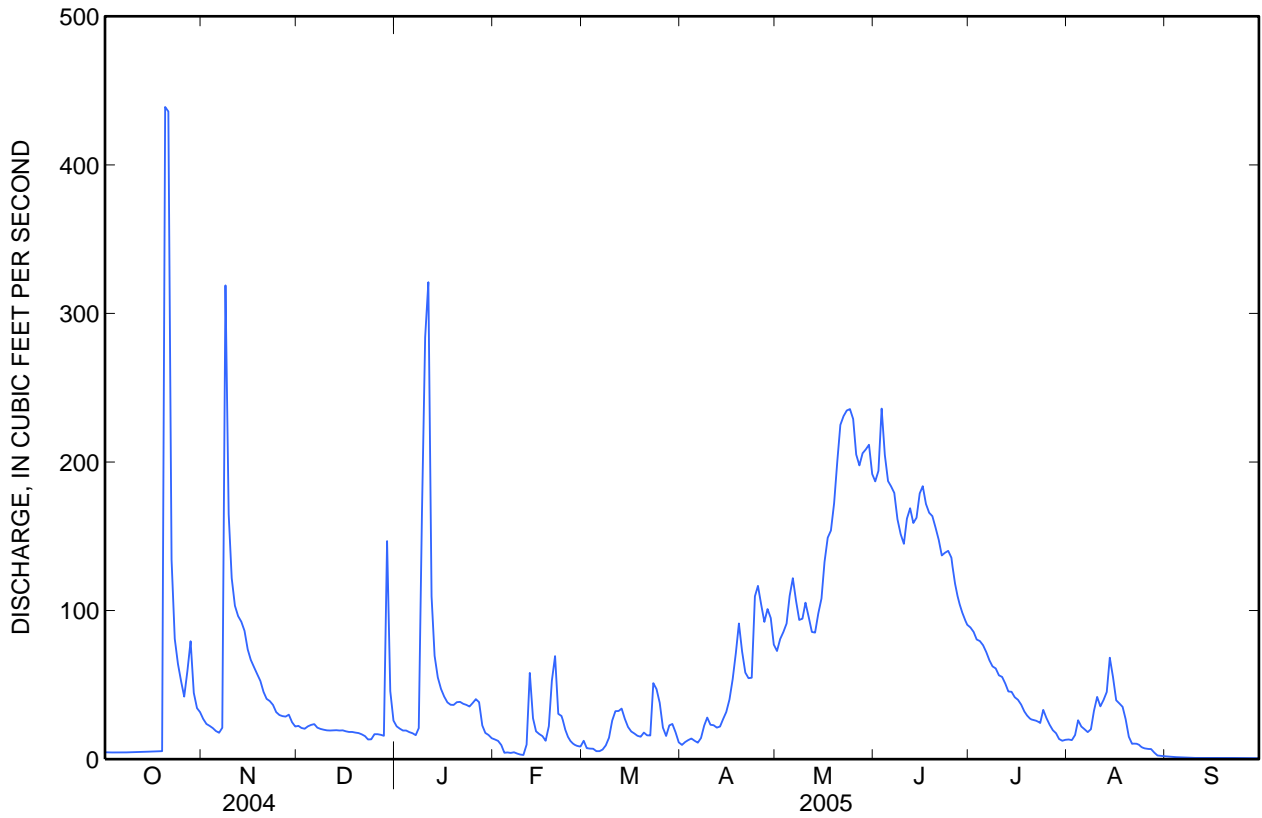
## STATISTICS OF MONTHLY MEAN DATA FOR WATER YEARS 1990 - 2005, BY WATER YEAR (WY)

	Oct	Nov	Dec	Jan	Feb	Mar	Apr	May	Jun	Jul	Aug	Sep
<b>Mean</b>	5.81	7.55	4.92	6.31	3.67	10.6	11.3	27.0	24.5	8.28	3.88	3.63
<b>Max</b>	51.3	60.2	24.0	55.9	17.9	63.7	49.2	149	157	44.2	22.3	15.5
<b>(WY)</b>	(2005)	(2005)	(2005)	(2005)	(2005)	(1995)	(2005)	(2005)	(2005)	(2005)	(2005)	(1995)
<b>Min</b>	0.31	0.50	0.40	0.47	0.30	0.31	0.35	0.47	0.16	0.11	0.10	0.23
<b>(WY)</b>	(2002)	(1990)	(1990)	(2000)	(2003)	(2002)	(2003)	(1990)	(2002)	(2002)	(2003)	(2001)

09409100 SANTA CLARA RIVER ABOVE BAKER RESERVOIR, NEAR CENTRAL, UT—Continued

SUMMARY STATISTICS

	Calendar Year 2004		Water Year 2005		Water Years 1990 - 2005	
Annual total	5,310.92		19,892.23			
Annual mean	14.5		54.5		9.81	
Highest annual mean					54.5	2005
Lowest annual mean					1.39	1990
Highest daily mean	439	Oct 20	439	Oct 20	439	Oct 20, 2004
Lowest daily mean	0.25	Feb 6	0.66	Sep 27	0.08	Aug 9, 2002
Annual seven-day minimum	0.27	Feb 3	0.70	Sep 24	0.08	Aug 8, 2002
Annual runoff (ac-ft)	10,530		39,460		7,110	
10 percent exceeds	26		160		21	
50 percent exceeds	5.2		26		1.4	
90 percent exceeds	0.47		4.0		0.30	



**09409880 SANTA CLARA RIVER AT GUNLOCK, UT**

Virgin River Basin

LOCATION.--Lat 37°16'55", long 113°46'00" referenced to North American Datum of 1927, in SW ¼ SW ¼ NW ¼ sec.28, T.40 S., R.17 W., Washington County, Hydrologic Unit 15010008, on right bank at downstream side of bridge on county road at Gunlock, 0.5 mi downstream from tailrace of powerhouse.

DRAINAGE AREA.--271 mi<sup>2</sup>.

**WATER-DISCHARGE RECORDS**

PERIOD OF RECORD.--August 1969 to current year.

GAGE.--Water-stage recorder. Crest-stage gage installed May 24, 1989. Elevation of gage is 3,628 ft above NGVD of 1929, from topographic map.

REMARKS.--Records good except for Jan 9 to Sep 30, daily discharges less than 2 ft<sup>3</sup>/s, and estimated daily discharges, which are poor. Many diversions for irrigation upstream of gage. Some regulation of low flow by several reservoirs and powerplant upstream from station.

EXTREMES FOR PERIOD OF RECORD.--Maximum discharge, 5,200 ft<sup>3</sup>/s, Jan 10 or 11, 2005, from computation of peak flow over spillway at Gunlock Dam, gage height, 10.21 ft, from floodmarks. No flow several days during 1977 and Jul 10 and 18, 2003.

EXTREMES FOR CURRENT YEAR.--Maximum discharge, 5,200 ft<sup>3</sup>/s, Jan 10 or 11 (explained above), gage height, 10.21 ft; minimum daily discharge, 1.6 ft<sup>3</sup>/s, Oct 15.

## 09409880 SANTA CLARA RIVER AT GUNLOCK, UT—Continued

**DISCHARGE, CUBIC FEET PER SECOND**  
**WATER YEAR OCTOBER 2004 TO SEPTEMBER 2005**  
**DAILY MEAN VALUES**

[e, estimated]

Day	Oct	Nov	Dec	Jan	Feb	Mar	Apr	May	Jun	Jul	Aug	Sep
1	3.6	3.6	e36	32	77	85	80	110	222	80	12	e6.0
2	4.1	3.7	e34	28	e75	73	79	111	231	77	12	e6.0
3	2.2	3.5	e32	26	e75	68	81	111	321	69	45	e6.0
4	2.4	3.2	e32	31	e75	e60	77	113	303	69	31	e6.0
5	2.0	2.1	e30	29	e75	e55	75	122	268	65	18	e6.0
6	2.4	2.5	e30	26	e70	e50	72	142	254	60	13	e6.0
7	2.3	2.8	e30	22	e70	e50	74	143	241	55	12	e6.0
8	2.0	630	e28	26	e70	e50	70	115	208	51	15	e6.0
9	2.4	109	27	e800	e70	e50	71	105	190	52	27	e6.0
10	2.9	77	27	e3,300	e70	e50	72	114	175	48	23	e6.0
11	4.0	69	28	e2,100	95	55	72	113	186	50	133	e6.0
12	3.8	65	27	e800	192	51	78	94	202	e45	e500	e6.0
13	3.3	61	27	e300	124	52	87	89	184	e40	e350	e6.0
14	2.9	59	27	e175	111	45	87	96	e180	e38	e175	e6.0
15	1.6	58	27	e100	113	40	84	108	e175	e35	e150	e5.0
16	2.5	57	27	e90	118	40	93	136	e170	e32	e110	e5.0
17	2.0	56	21	e80	123	42	106	156	145	e28	e90	e5.0
18	3.1	56	25	e75	136	40	120	150	139	e25	e70	e5.0
19	3.6	55	24	e75	272	38	135	159	131	21	e55	e5.0
20	449	55	23	79	e225	100	131	188	e130	19	e45	e5.0
21	1,090	e54	24	76	e210	91	119	225	e125	19	e35	e5.0
22	552	e52	22	75	e200	70	115	251	e125	e19	e28	e5.0
23	61	e50	21	e75	e150	254	116	241	e120	e19	e21	e5.0
24	20	e48	21	e75	112	184	180	232	e120	e21	e18	e5.0
25	9.1	e46	21	e75	105	152	211	226	e115	e20	e13	e5.0
26	7.8	e44	22	e80	106	131	161	228	e115	e17	e11	e5.0
27	190	e42	22	e90	102	111	129	221	e110	e15	e10	e5.0
28	337	e40	23	95	94	104	121	227	e100	13	e9.0	e5.0
29	66	e40	137	90	---	99	150	246	e95	12	e8.0	e5.0
30	11	e38	71	87	---	86	121	248	91	e12	e7.0	e5.0
31	4.9	---	36	78	---	79	---	223	---	e12	e7.0	---
<b>Total</b>	2,850.9	1,882.4	982	9,090	3,315	2,455	3,167	5,043	5,171	1,138	2,053.0	164.0
<b>Mean</b>	92.0	62.7	31.7	293	118	79.2	106	163	172	36.7	66.2	5.47
<b>Max</b>	1,090	630	137	3,300	272	254	211	251	321	80	500	6.0
<b>Min</b>	1.6	2.1	21	22	70	38	70	89	91	12	7.0	5.0
<b>Ac-ft</b>	5,650	3,730	1,950	18,030	6,580	4,870	6,280	10,000	10,260	2,260	4,070	325

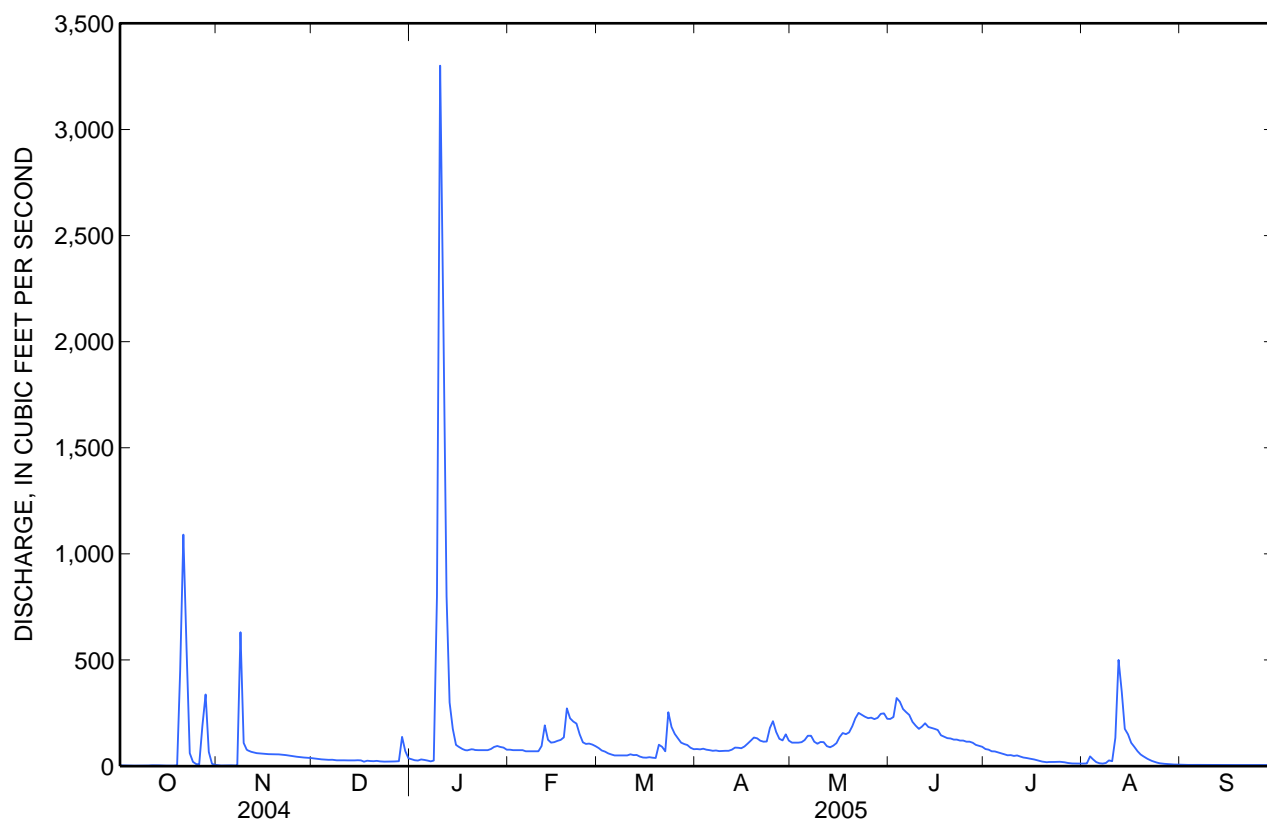
## STATISTICS OF MONTHLY MEAN DATA FOR WATER YEARS 1970 - 2005, BY WATER YEAR (WY)

	Oct	Nov	Dec	Jan	Feb	Mar	Apr	May	Jun	Jul	Aug	Sep
<b>Mean</b>	12.6	16.1	15.8	28.2	38.3	50.9	39.9	42.9	32.8	12.0	10.2	8.17
<b>Max</b>	92.0	62.7	31.7	293	372	211	150	222	172	40.4	66.2	26.5
<b>(WY)</b>	(2005)	(2005)	(2005)	(2005)	(1980)	(1979)	(1973)	(1973)	(2005)	(1995)	(2005)	(1980)
<b>Min</b>	1.10	2.59	6.49	4.73	7.69	5.54	6.05	5.14	2.51	0.37	0.60	0.79
<b>(WY)</b>	(2004)	(2004)	(2004)	(1972)	(1972)	(2002)	(1977)	(1989)	(2003)	(2003)	(2003)	(2003)

09409880 SANTA CLARA RIVER AT GUNLOCK, UT—Continued

SUMMARY STATISTICS

	Calendar Year 2004		Water Year 2005		Water Years 1970 - 2005	
<b>Annual total</b>	8,111.78		37,311.3			
<b>Annual mean</b>	22.2		102		25.6	
<b>Highest annual mean</b>					102	2005
<b>Lowest annual mean</b>					6.04	2003
<b>Highest daily mean</b>	1,090	Oct 21	3,300	Jan 10	3,300	Jan 10, 2005
<b>Lowest daily mean</b>	0.12	Jul 11	1.6	Oct 15	0.00	Jul 26, 1977
<b>Annual seven-day minimum</b>	0.31	Aug 5	2.2	Oct 3	0.02	Aug 1, 1977
<b>Annual runoff (ac-ft)</b>	16,090		74,010		18,540	
<b>10 percent exceeds</b>	36		204		54	
<b>50 percent exceeds</b>	8.2		65		13	
<b>90 percent exceeds</b>	0.63		5.0		4.2	





Water-Data Report UT-2005

**09413000 SANTA CLARA RIVER AT ST. GEORGE, UT**

Virgin River Basin

LOCATION.--Lat 37°04'31", long 113°35'32" referenced to North American Datum of 1927, in SE ¼ SW ¼ NE ¼ sec.1, T.43 S., R.16 W., Washington County, Hydrologic Unit 15010008, Hydrologic Unit 15010008 on right bank 0.8 mi upstream from mouth and 2 mi south of St. George.

DRAINAGE AREA.--541 mi<sup>2</sup>.

**WATER-DISCHARGE RECORDS**

PERIOD OF RECORD.--October 1950 to September 1956, November 1984 to current year.

GAGE.--Water-stage recorder. Crest-stage gage installed January 27, 1993. Elevation of gage is 2,560 ft above NGVD of 1929, from topographic map. October 1950 to September 1956, gage located 0.25 mi downstream and November 1984 to September 1989, 0.5 mi downstream from present site, both at different datum.

REMARKS.--Records good except for Jan 10 to Sep 30, discharges less than 2.0 ft<sup>3</sup>/s, and estimated daily discharge, which are poor. Flow regulated by reservoirs and many diversions for irrigation upstream of station.

EXTREMES FOR PERIOD OF RECORD.--Maximum discharge, 6,200 ft<sup>3</sup>/s, Jan 11, 2005, gage height, 16.68 ft, from rating curve extended above 3,800 ft<sup>3</sup>/s on basis of calculation of peak flow over weir; no flow at times in 1951, 1953, 1955, 1956, 1989, 1991, and 2003.

EXTREMES FOR CURRENT YEAR.--Maximum discharge, 6,200 ft<sup>3</sup>/s, Jan 11, gage height, 16.68 ft; minimum daily discharge, 2.1 ft<sup>3</sup>/s, Oct 4.

## 09413000 SANTA CLARA RIVER AT ST. GEORGE, UT—Continued

**DISCHARGE, CUBIC FEET PER SECOND**  
**WATER YEAR OCTOBER 2004 TO SEPTEMBER 2005**  
**DAILY MEAN VALUES**

[e, estimated]

Day	Oct	Nov	Dec	Jan	Feb	Mar	Apr	May	Jun	Jul	Aug	Sep
1	3.0	9.7	19	45	123	208	70	141	216	92	21	11
2	2.6	9.8	20	36	119	203	73	131	217	e90	e43	10
3	2.3	8.9	19	34	121	225	74	133	276	e84	e52	9.7
4	2.1	9.0	16	50	126	208	75	140	264	e76	11	9.5
5	2.6	8.6	17	46	134	212	75	147	221	e68	11	9.4
6	2.2	8.5	20	36	122	194	70	186	215	e60	12	9.0
7	e2.2	12	25	35	133	175	65	195	219	e55	11	8.7
8	e2.2	181	29	56	141	167	63	145	198	53	12	7.9
9	e2.2	153	25	396	145	169	68	123	176	50	12	7.4
10	e2.2	95	24	2,840	144	172	73	116	e160	47	11	7.6
11	e2.2	61	24	2,960	e400	171	67	130	e165	43	12	7.8
12	e2.2	54	24	739	207	168	72	120	e185	40	11	7.3
13	2.3	42	24	136	148	170	84	106	e180	37	e361	7.2
14	2.4	42	23	107	121	153	93	102	e170	34	e200	6.7
15	2.4	34	27	119	132	135	85	110	e155	32	e164	6.1
16	2.6	41	24	126	168	e130	92	132	150	32	113	6.3
17	3.3	39	20	135	171	e130	119	149	147	29	102	7.0
18	3.3	36	24	134	223	e125	110	145	140	26	44	6.8
19	4.1	35	19	125	528	e120	127	152	137	20	31	6.7
20	123	22	21	117	1,030	e240	134	188	134	17	27	6.2
21	225	31	26	111	662	168	105	235	131	16	26	5.6
22	38	18	20	101	680	149	97	263	125	17	25	5.7
23	18	48	19	104	616	375	88	274	141	18	24	e6.0
24	13	43	21	102	421	379	183	279	133	23	22	e6.2
25	13	25	17	97	342	265	258	252	128	24	e20	e6.2
26	12	23	18	120	285	188	e215	210	123	23	e18	e6.4
27	28	25	20	e140	249	119	e200	181	117	18	e16	e6.4
28	63	49	28	171	224	104	e190	187	114	14	e15	7.1
29	16	29	294	184	---	96	270	201	104	13	e13	6.1
30	11	21	283	160	---	94	176	219	96	12	12	6.1
31	10	---	68	138	---	78	---	222	---	16	12	---
<b>Total</b>	618.4	1,213.5	1,258	9,700	7,915	5,490	3,471	5,314	4,937	1,179	1,464	220.1
<b>Mean</b>	19.9	40.5	40.6	313	283	177	116	171	165	38.0	47.2	7.34
<b>Max</b>	225	181	294	2,960	1,030	379	270	279	276	92	361	11
<b>Min</b>	2.1	8.5	16	34	119	78	63	102	96	12	11	5.6
<b>Ac-ft</b>	1,230	2,410	2,500	19,240	15,700	10,890	6,880	10,540	9,790	2,340	2,900	437

## STATISTICS OF MONTHLY MEAN DATA FOR WATER YEARS 1951 - 2005, BY WATER YEAR (WY)

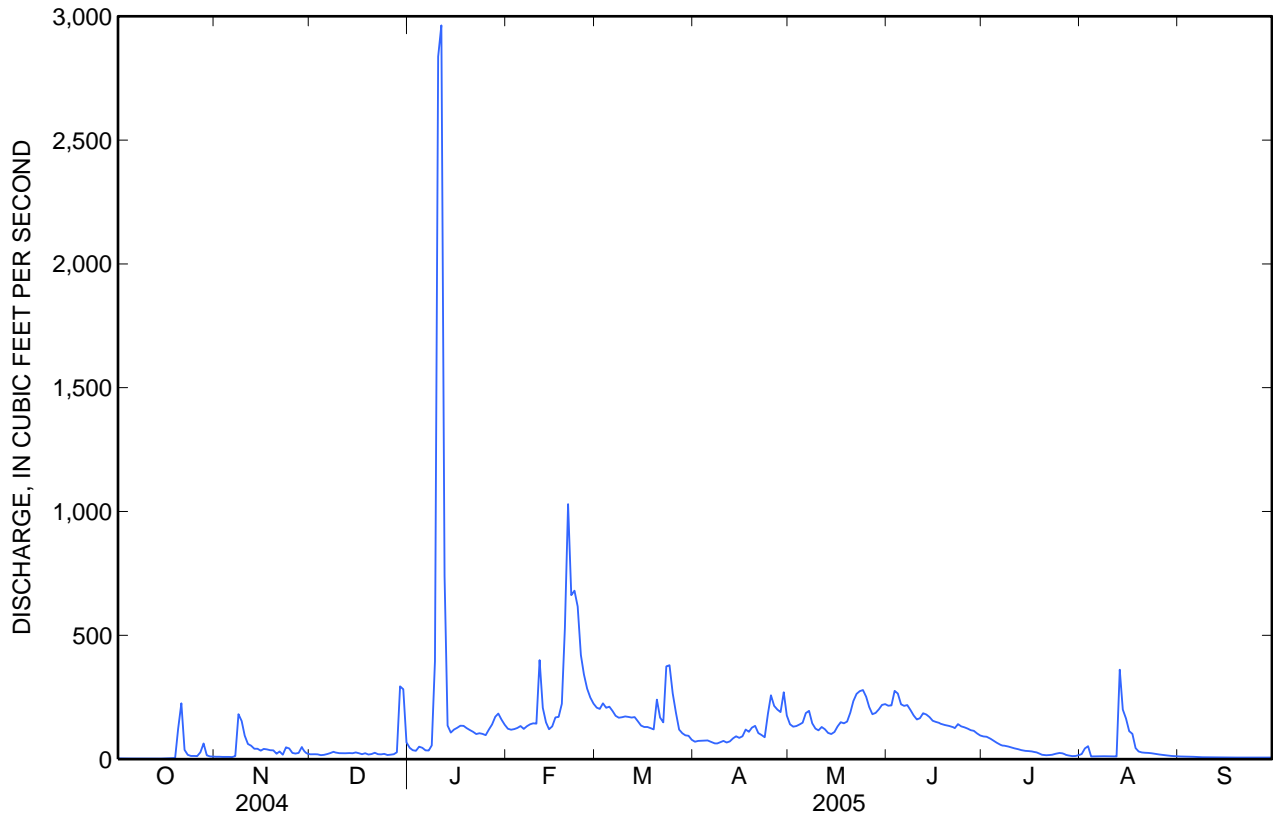
	Oct	Nov	Dec	Jan	Feb	Mar	Apr	May	Jun	Jul	Aug	Sep
<b>Mean</b>	3.97	6.51	7.78	23.1	25.4	37.2	23.9	19.3	15.0	5.92	7.21	3.88
<b>Max</b>	19.9	40.5	40.6	313	283	313	136	171	165	38.0	47.2	12.7
<b>(WY)</b>	(2005)	(2005)	(2005)	(2005)	(2005)	(1995)	(1952)	(2005)	(2005)	(2005)	(2005)	(1998)
<b>Min</b>	0.22	0.59	0.91	0.82	0.79	1.44	1.50	0.41	0.22	0.21	0.05	0.29
<b>(WY)</b>	(1991)	(1991)	(1992)	(1991)	(1991)	(1991)	(1991)	(2004)	(2004)	(2003)	(1956)	(1953)



09413000 SANTA CLARA RIVER AT ST. GEORGE, UT—Continued

SUMMARY STATISTICS

	Calendar Year 2004		Water Year 2005		Water Years 1951 - 2005	
<b>Annual total</b>	3,834.79		42,780.0			
<b>Annual mean</b>	10.5		117		15.2	
<b>Highest annual mean</b>					117	2005
<b>Lowest annual mean</b>					1.18	1991
<b>Highest daily mean</b>	294	Dec 29	2,960	Jan 11	2,960	Jan 11, 2005
<b>Lowest daily mean</b>	0.14	Jun 23	2.1	Oct 4	0.00	Sep 21, 1951
<b>Annual seven-day minimum</b>	0.17	Jun 6	2.2	Oct 6	0.00	Aug 2, 1956
<b>Annual runoff (ac-ft)</b>	7,610		84,850		11,010	
<b>10 percent exceeds</b>	24		220		27	
<b>50 percent exceeds</b>	2.9		72		3.4	
<b>90 percent exceeds</b>	0.23		7.2		0.43	



**09413200 VIRGIN RIVER NEAR BLOOMINGTON, UT**

Virgin River Basin

LOCATION.--Lat 37°04'14", long 113°34'55" referenced to North American Datum of 1927, in SE ¼ NW ¼ SW ¼ sec.6, T.43 S., R.15 W., Washington County, Hydrologic Unit 15010010, on left bank 0.2 mi downstream from mouth of Santa Clara River, 0.2 mi upstream from I-15 bridge, about 1.5 mi northeast of Bloomington, and 2.5 mi south of St. George. Gage was temporarily moved to right bank from April 2004 to January 2005.

DRAINAGE AREA.--3,853 mi<sup>2</sup>.

**WATER-DISCHARGE RECORDS**

REVISED RECORDS.--WDR-UT-92-1: Drainage area.

PERIOD OF RECORD.--September 1977 to current year.

GAGE.--Water-stage recorder. Crest-stage gage installed May 9, 1989. Elevation of gage is 2,530 ft above NGVD of 1929, from topographic map. Datum lowered 10 ft on Apr 26, 2004. Prior to Apr 26, 2004 on left bank. May 18, 1992 to February 20, 1993 at site 180 ft upstream. Prior to September 19, 1978 at site 1.5 mi downstream at different datum.

REMARKS.--Records fair except for estimated daily discharges, which are poor. Natural flow affected by diversions upstream.

EXTREMES FOR PERIOD OF RECORD.--Maximum discharge, 60,000 ft<sup>3</sup>/s (estimated on basis of slope conveyance), Jan 1, 1989, gage height, 25.70 ft, result of Quail Creek reservoir dike failure; minimum daily discharge, 5.1 ft<sup>3</sup>/s, Jul 11, 2003.

EXTREMES FOR CURRENT YEAR.--Maximum discharge, 19,600 ft<sup>3</sup>/s, Jan 11, gage height, 26.66 ft; minimum daily discharge, 38 ft<sup>3</sup>/s, Oct 3, 14, and 15.

## 09413200 VIRGIN RIVER NEAR BLOOMINGTON, UT—Continued

**DISCHARGE, CUBIC FEET PER SECOND**  
**WATER YEAR OCTOBER 2004 TO SEPTEMBER 2005**  
**DAILY MEAN VALUES**

[e, estimated]

Day	Oct	Nov	Dec	Jan	Feb	Mar	Apr	May	Jun	Jul	Aug	Sep
1	85	190	132	227	448	579	440	1,660	1,510	231	91	69
2	49	163	133	189	411	550	456	1,710	1,500	221	303	59
3	38	179	127	175	382	731	512	1,740	1,790	210	382	67
4	39	153	120	227	362	608	597	1,940	1,540	206	544	62
5	47	166	122	271	353	526	535	2,330	1,230	192	303	65
6	53	156	129	185	337	517	486	e2,400	1,220	165	269	64
7	42	171	139	179	338	522	552	e2,300	1,110	152	244	59
8	50	1,690	148	206	354	522	760	e1,900	983	153	242	54
9	43	1,400	125	4,100	322	555	852	e2,000	907	162	410	64
10	42	519	116	15,100	312	603	771	2,190	880	151	393	61
11	47	393	115	e15,500	470	679	596	1,810	858	129	471	64
12	49	383	113	e4,600	1,580	712	584	1,550	1,240	116	351	57
13	42	304	112	e3,500	950	772	649	1,500	e850	120	585	48
14	38	276	109	e2,500	481	725	807	1,770	e750	95	393	62
15	38	241	116	e1,800	410	611	955	2,020	e700	93	e500	65
16	39	204	102	e1,300	396	550	1,100	2,360	662	108	e360	89
17	43	198	95	e1,000	361	500	1,350	2,680	613	111	e300	84
18	66	194	101	e800	655	467	1,680	2,220	563	97	e190	78
19	88	232	96	e600	1,890	423	2,080	2,320	529	81	e220	73
20	727	180	101	e550	1,970	787	1,610	2,580	479	71	212	91
21	7,620	221	108	e500	1,360	769	1,310	2,850	450	96	195	88
22	3,040	216	97	e400	1,450	572	1,300	2,940	432	117	165	100
23	550	295	91	e350	1,350	2,680	1,180	2,730	467	128	127	110
24	e350	226	89	e350	1,030	1,860	2,580	2,670	448	147	99	98
25	290	191	86	e350	818	1,540	e2,350	2,560	405	149	98	89
26	259	185	96	e320	749	1,050	e2,150	2,410	371	125	79	79
27	244	185	101	e950	692	791	e2,070	2,220	339	116	72	75
28	1,630	433	126	876	624	695	e1,940	2,070	313	98	71	85
29	610	e200	1,350	951	---	658	e1,800	2,000	291	91	59	97
30	298	e160	1,150	730	---	608	1,720	1,880	246	78	63	108
31	230	---	284	534	---	502	---	1,620	---	87	63	---
<b>Total</b>	16,786	9,704	5,929	59,320	20,855	23,664	35,772	66,930	23,676	4,096	7,854	2,264
<b>Mean</b>	541	323	191	1,914	745	763	1,192	2,159	789	132	253	75.5
<b>Max</b>	7,620	1,690	1,350	15,500	1,970	2,680	2,580	2,940	1,790	231	585	110
<b>Min</b>	38	153	86	175	312	423	440	1,500	246	71	59	48
<b>Ac-ft</b>	33,300	19,250	11,760	117,700	41,370	46,940	70,950	132,800	46,960	8,120	15,580	4,490

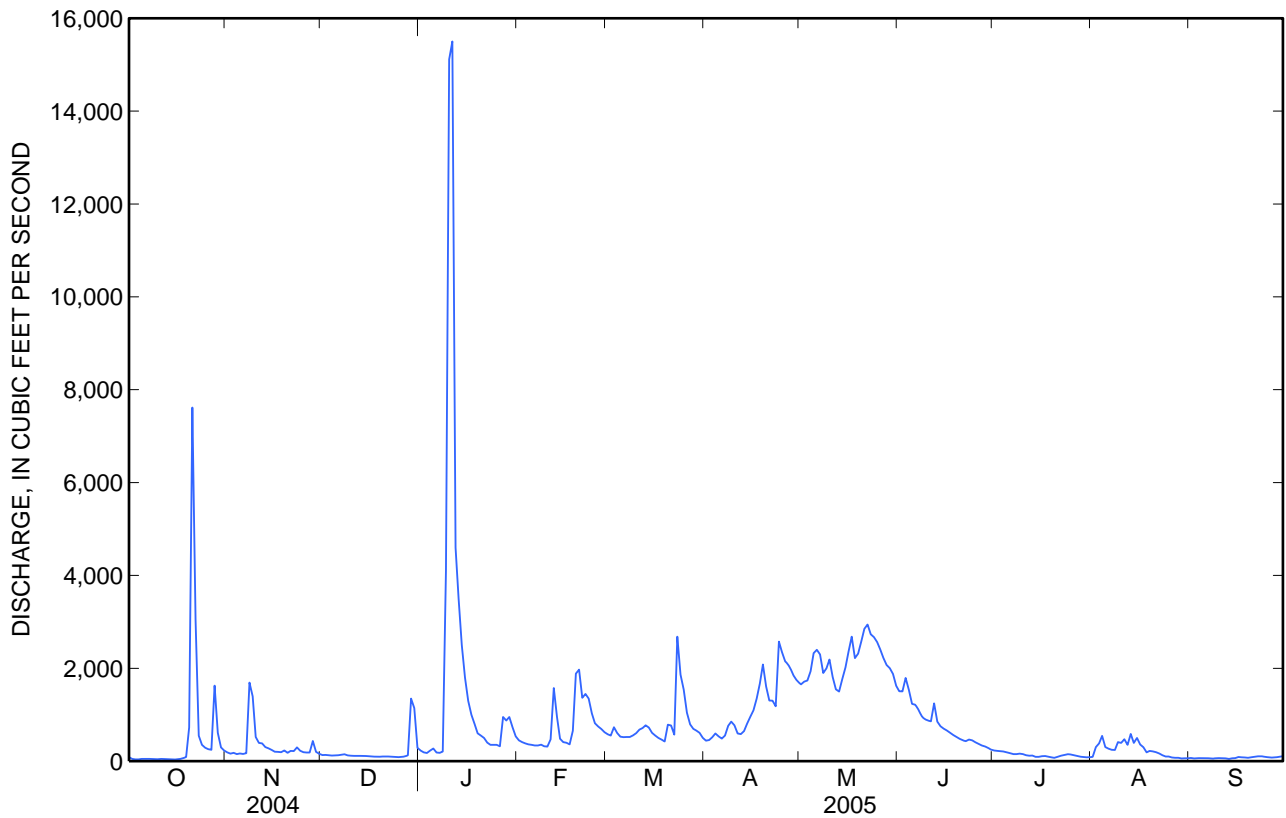
## STATISTICS OF MONTHLY MEAN DATA FOR WATER YEARS 1978 - 2005, BY WATER YEAR (WY)

	Oct	Nov	Dec	Jan	Feb	Mar	Apr	May	Jun	Jul	Aug	Sep
<b>Mean</b>	132	162	169	278	297	375	420	497	183	82.8	97.7	103
<b>Max</b>	541	323	350	1,914	1,642	1,124	1,335	2,159	1,146	244	253	422
<b>(WY)</b>	(2005)	(2005)	(1984)	(2005)	(1980)	(1995)	(1993)	(2005)	(1983)	(1984)	(2005)	(1998)
<b>Min</b>	37.4	51.4	71.5	64.7	56.1	48.8	42.0	25.0	13.3	11.6	13.7	20.8
<b>(WY)</b>	(2004)	(1991)	(1991)	(1991)	(1991)	(1990)	(2003)	(2002)	(2003)	(2003)	(2002)	(2003)

09413200 VIRGIN RIVER NEAR BLOOMINGTON, UT—Continued

SUMMARY STATISTICS

	Calendar Year 2004		Water Year 2005		Water Years 1978 - 2005	
<b>Annual total</b>	48,380.5		276,850			
<b>Annual mean</b>	132		758		233	
<b>Highest annual mean</b>					758	2005
<b>Lowest annual mean</b>					58.0	2002
<b>Highest daily mean</b>	7,620	Oct 21	15,500	Jan 11	15,500	Jan 11, 2005
<b>Lowest daily mean</b>	8.6	Jul 14	38	Oct 3	5.1	Jul 11, 2003
<b>Annual seven-day minimum</b>	9.1	Jul 8	42	Oct 10	5.4	Jul 10, 2003
<b>Annual runoff (ac-ft)</b>	95,960		549,100		168,500	
<b>10 percent exceeds</b>	216		1,940		507	
<b>50 percent exceeds</b>	61		354		119	
<b>90 percent exceeds</b>	13		71		28	



**09413500 VIRGIN RIVER NEAR ST. GEORGE, UT**

Virgin River Basin

LOCATION.--Lat 37°00'52", long 113°40'47" referenced to North American Datum of 1927, in NW ¼ NE ¼ SE ¼ sec.30, T.43 S., R.16 W., Washington County, Hydrologic Unit 15010010, Bureau of Land Management, on right bank immediately upstream from Beaver Dam Mountains Wilderness Area, and 8.0 mi southwest of St. George.

DRAINAGE AREA.--4,123 mi<sup>2</sup>.

**WATER-DISCHARGE RECORDS**

REVISED RECORDS.--WDR UT-92-1: Drainage area.

PERIOD OF RECORD.--October 1950 to December 1956, October 1991 to current year.

GAGE.--Water-stage recorder, crest-stage gage, and concrete control. Elevation of gage is 2,400 ft above NGVD of 1929, from topographic map. October 1950 to December 1956, gage located about 400 ft downstream at different datum.

REMARKS.--Records good except for daily discharges greater than 400 ft<sup>3</sup>/s and estimated daily discharges, which are poor. Many diversions upstream of gage.

EXTREMES FOR PERIOD OF RECORD.--Maximum discharge, 19,600 ft<sup>3</sup>/s, Jan 11, 2005, gage height 22.13 ft, from floodmarks, no flow at times some years.

EXTREMES OUTSIDE PERIOD OF RECORD.--Maximum discharge, 60,000 ft<sup>3</sup>/s (estimated), Jan 1, 1989, gage height, about 30.0 ft, result of Quail Creek reservoir dike failure.

EXTREMES FOR CURRENT YEAR.--Maximum discharge, 19,600 ft<sup>3</sup>/s, Jan 11, gage height, 22.13 ft; minimum daily discharge, 48 ft<sup>3</sup>/s, Oct 14 .

## 09413500 VIRGIN RIVER NEAR ST. GEORGE, UT—Continued

**DISCHARGE, CUBIC FEET PER SECOND**  
**WATER YEAR OCTOBER 2004 TO SEPTEMBER 2005**  
**DAILY MEAN VALUES**

[e, estimated]

Day	Oct	Nov	Dec	Jan	Feb	Mar	Apr	May	Jun	Jul	Aug	Sep
1	141	175	136	255	367	597	e500	e1,650	1,430	170	93	62
2	75	149	138	197	294	e550	e470	e1,700	1,410	164	198	55
3	50	156	133	174	266	e700	e550	e1,750	1,510	156	335	60
4	54	135	132	224	252	e600	e600	e1,900	1,490	148	e500	58
5	59	143	130	317	257	e500	e550	e2,300	1,310	146	e340	56
6	70	134	133	193	e270	e500	547	e2,400	1,220	129	e280	68
7	49	133	136	178	e280	e500	628	e2,300	1,130	120	e240	65
8	64	795	150	198	e300	e500	863	e2,000	1,030	130	e240	52
9	52	1,340	134	2,540	e280	e550	1,060	e2,000	919	135	e400	64
10	53	531	128	e14,800	e270	e600	1,070	e2,150	819	129	e380	66
11	62	402	128	e15,000	e450	e650	891	1,640	767	105	e430	69
12	59	383	126	e5,000	1,710	e700	828	1,510	1,070	98	e380	63
13	61	315	125	e3,500	1,220	e750	884	1,470	864	109	e560	53
14	48	276	123	e2,000	719	e700	1,020	1,580	663	94	e420	60
15	53	220	125	e1,500	624	e600	1,120	1,720	565	88	e500	61
16	52	178	119	931	566	e550	1,210	e2,350	535	97	e380	89
17	55	167	112	734	511	e500	1,350	e2,650	447	105	e320	78
18	87	160	111	612	693	e450	1,490	e2,300	390	92	e200	77
19	117	193	108	500	1,720	e400	e2,000	e2,200	343	82	e190	68
20	460	161	115	488	2,020	e750	e1,650	e2,550	325	72	e210	87
21	e7,000	198	115	445	1,660	690	1,390	e2,850	285	83	e190	86
22	e3,000	185	109	362	1,550	513	1,360	e2,900	287	109	e160	94
23	642	252	102	343	1,750	e2,500	1,330	e2,750	299	116	e120	100
24	406	207	101	343	1,320	e1,900	e2,500	e2,650	291	126	e100	75
25	330	157	97	375	1,050	e1,600	e2,300	e2,550	279	127	e90	72
26	301	154	101	358	920	1,060	e2,100	e2,450	250	112	e80	70
27	258	151	112	813	822	764	e2,050	e2,300	235	99	e70	72
28	1,250	327	111	824	675	679	e2,000	e2,100	227	80	62	79
29	569	194	748	760	---	649	1,660	e2,000	226	76	56	94
30	317	141	1,170	663	---	543	e1,650	1,610	179	74	62	95
31	221	---	361	468	---	e550	---	1,510	---	79	58	---
<b>Total</b>	16,015	8,112	5,669	55,095	22,816	23,095	37,621	65,790	20,795	3,450	7,644	2,148
<b>Mean</b>	517	270	183	1,777	815	745	1,254	2,122	693	111	247	71.6
<b>Max</b>	7,000	1,340	1,170	15,000	2,020	2,500	2,500	2,900	1,510	170	560	100
<b>Min</b>	48	133	97	174	252	400	470	1,470	179	72	56	52
<b>Ac-ft</b>	31,770	16,090	11,240	109,300	45,260	45,810	74,620	130,500	41,250	6,840	15,160	4,260

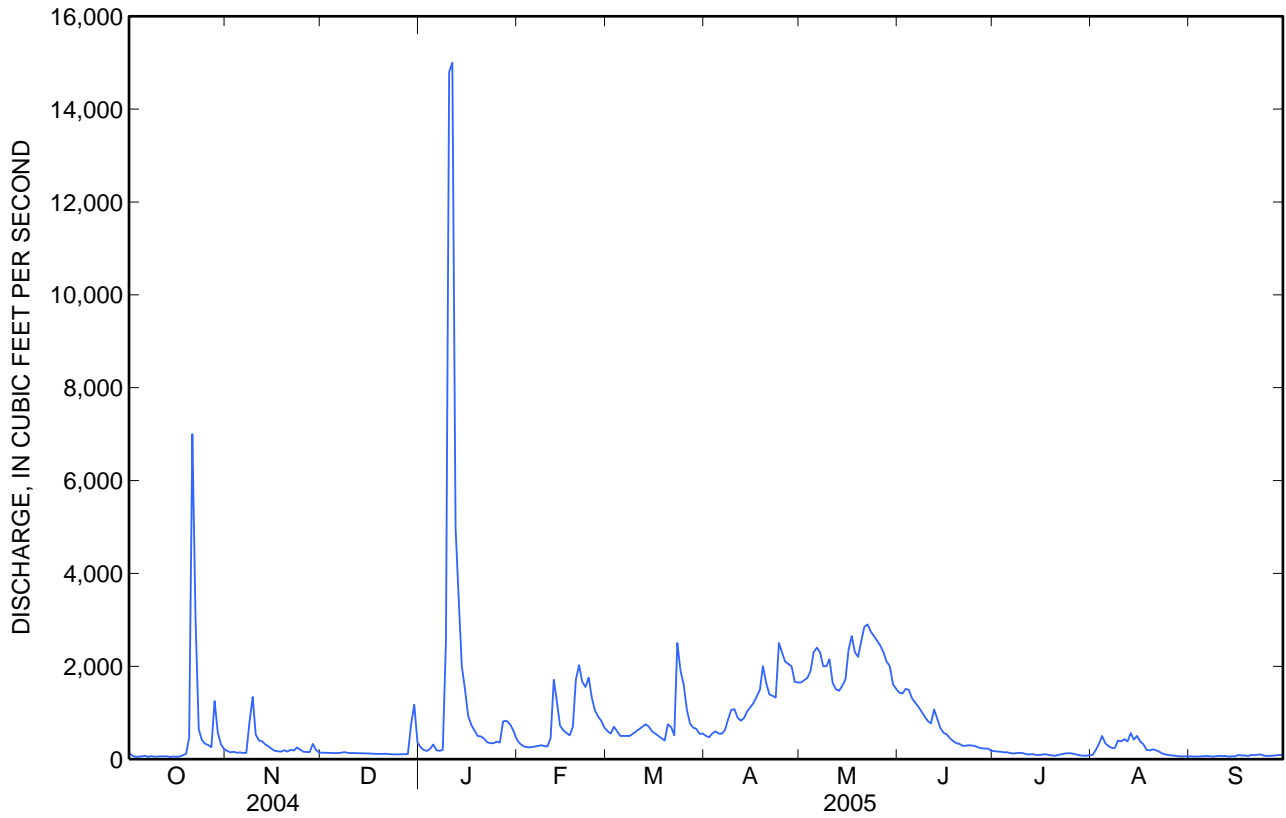
## STATISTICS OF MONTHLY MEAN DATA FOR WATER YEARS 1951 - 2005, BY WATER YEAR (WY)

	Oct	Nov	Dec	Jan	Feb	Mar	Apr	May	Jun	Jul	Aug	Sep
<b>Mean</b>	109	140	153	263	245	300	359	401	119	67.5	112	90.0
<b>Max</b>	517	270	287	1,777	869	1,232	1,312	2,122	693	232	522	475
<b>(WY)</b>	(2005)	(2005)	(1994)	(2005)	(1993)	(1995)	(1952)	(2005)	(2005)	(1998)	(1955)	(1998)
<b>Min</b>	22.8	65.2	64.5	84.2	62.3	61.6	38.3	6.86	0.00	10.1	4.30	0.00
<b>(WY)</b>	(1951)	(1992)	(1957)	(2003)	(2002)	(2002)	(1953)	(1953)	(1951)	(1952)	(1956)	(1956)

09413500 VIRGIN RIVER NEAR ST. GEORGE, UT—Continued

SUMMARY STATISTICS

	Calendar Year 2004		Water Year 2005		Water Years 1951 - 2005	
<b>Annual total</b>	49,774		268,250			
<b>Annual mean</b>	136		735		197	
<b>Highest annual mean</b>					735	2005
<b>Lowest annual mean</b>					61.6	2002
<b>Highest daily mean</b>	7,000	Oct 21	15,000	Jan 11	15,000	Jan 11, 2005
<b>Lowest daily mean</b>	13	Jul 9	48	Oct 14	0.00	Apr 17, 1951
<b>Annual seven-day minimum</b>	14	Jul 8	55	Oct 9	0.00	May 29, 1951
<b>Annual runoff (ac-ft)</b>	98,730		532,100		143,000	
<b>10 percent exceeds</b>	234		1,940		384	
<b>50 percent exceeds</b>	76		320		101	
<b>90 percent exceeds</b>	21		70		13	





Water-Data Report UT-2005

## 09413900 BEAVER DAM WASH NEAR ENTERPRISE, UT

Virgin River Basin

LOCATION.--Lat 37°28'12", long 114°02'45" referenced to North American Datum of 1927, in NW ¼ SW ¼ NW ¼ sec.24, T.38 S., R.20 W., Washington County, Hydrologic Unit 15010010, Bureau of Land Management, on left bank 0.4 mi downstream from Nevada-Utah State line and about 19 mi southwest of Enterprise.

DRAINAGE AREA.--58.0 mi<sup>2</sup>.

### WATER-DISCHARGE RECORDS

PERIOD OF RECORD.--October 1991 to current year.

GAGE.--Water-stage recorder and crest-stage gage. Elevation of gage is 4,740 ft (revised) above NGVD of 1929, from topographic map.

REMARKS.--Records poor. Prior to breach reported on April 6, 2005, some regulation of low flow by Schroeder Reservoir (capacity about 200 acre-ft) 3 miles upstream from station.

EXTREMES FOR PERIOD OF RECORD.--Maximum discharge, 1,760 ft<sup>3</sup>/s, Feb 24, 1998, gage height, 10.16 ft, from floodmarks, from rating curve extended above 70 ft<sup>3</sup>/s on basis of slope-area measurement at gage height, 9.56 ft; no flow Aug 8, 10, 1994.

EXTREMES FOR CURRENT YEAR.--Peak discharges greater than base discharge of 150 ft<sup>3</sup>/s and (or) maximum (\*):

Date	Time	Discharge (ft <sup>3</sup> /s)	Gage height (ft)
Oct 20	1935	633	11.47
Oct 27	2235	302	9.65
Nov 08	0845	251	9.19
Dec 29	1645	255	9.13
Jan 11	0800	*1,360	*13.91
Feb 19	2045	255	9.58
Mar 23	0700	213	9.28
Apr 28	0130	462	10.64

Minimum daily discharge, 1.3 ft<sup>3</sup>/s, Sep 11.



## 09413900 BEAVER DAM WASH NEAR ENTERPRISE, UT—Continued

**DISCHARGE, CUBIC FEET PER SECOND**  
**WATER YEAR OCTOBER 2004 TO SEPTEMBER 2005**  
**DAILY MEAN VALUES**

[e, estimated]

Day	Oct	Nov	Dec	Jan	Feb	Mar	Apr	May	Jun	Jul	Aug	Sep
1	1.7	23	e7.2	47	54	46	e33	45	e2.5	e2.4	2.9	2.2
2	1.7	20	e7.1	35	49	45	e36	46	e2.6	e2.4	2.8	2.0
3	1.7	20	e7.0	30	46	46	e47	54	e2.6	e2.3	3.0	1.8
4	1.8	20	e7.0	32	44	44	e56	41	2.6	e2.3	3.1	2.1
5	2.1	19	e7.4	23	42	40	e51	34	2.6	e2.3	3.2	1.9
6	2.5	20	e7.4	17	41	41	e35	36	2.7	e2.3	4.7	1.7
7	2.6	21	e7.8	12	40	41	e38	39	2.7	e2.3	4.4	1.8
8	2.6	131	e7.9	15	39	41	e38	28	2.7	e2.3	4.2	1.8
9	2.4	60	e8.0	540	37	42	e34	21	2.7	e2.2	5.2	1.8
10	2.4	42	e8.4	839	35	44	e31	18	2.7	e2.2	5.9	1.8
11	2.5	47	e8.9	775	39	45	e30	17	2.7	e2.2	11	1.3
12	2.4	51	e10	209	73	42	e28	15	2.6	e2.2	14	1.7
13	2.4	e33	e10	121	70	41	e26	13	2.6	e2.2	9.5	1.9
14	2.5	e24	e10	98	68	34	e25	11	e2.6	e2.2	5.4	2.0
15	2.4	e21	e9.6	84	69	29	e24	9.4	e2.6	e2.2	10	2.0
16	2.2	e18	e9.2	76	61	26	e23	8.4	e2.6	2.2	5.7	2.0
17	1.9	e16	e8.8	73	55	24	e23	7.5	e2.6	2.2	4.7	1.8
18	2.1	e15	e8.2	73	62	23	e23	6.5	e2.6	2.4	4.1	1.9
19	2.8	e13	e8.2	73	200	23	e23	5.6	e2.6	2.6	3.6	2.1
20	214	e12	e8.0	79	162	30	e23	4.7	e2.5	2.7	3.4	2.1
21	84	e11	e7.8	76	107	27	e23	3.9	e2.5	2.8	3.1	2.2
22	29	e10	e7.5	73	113	24	e22	3.1	e2.5	3.3	3.0	2.1
23	14	e10	e7.4	68	82	122	e22	2.7	e2.5	2.9	2.9	2.0
24	10	e9.2	e7.2	66	70	72	e40	2.7	e2.5	2.9	2.8	1.6
25	8.9	e9.0	e7.8	66	62	66	e44	e2.6	e2.5	3.4	2.8	1.6
26	8.2	e8.9	e8.0	75	57	52	e46	e2.5	e2.5	2.8	2.5	2.0
27	134	e9.0	e8.0	105	50	43	46	e2.5	e2.4	2.9	1.9	2.2
28	111	e10	e8.0	97	48	39	82	e2.6	e2.4	2.6	1.8	2.2
29	42	e8.2	151	80	---	35	100	e2.5	e2.4	2.5	2.1	2.2
30	32	e7.8	86	69	---	31	56	e2.5	e2.4	2.3	2.4	2.2
31	29	---	54	61	---	e34	---	e2.5	---	2.5	2.2	---
<b>Total</b>	758.8	719.1	518.8	4,087	1,875	1,292	1,128	490.2	77.0	77.0	138.3	58.0
<b>Mean</b>	24.5	24.0	16.7	132	67.0	41.7	37.6	15.8	2.57	2.48	4.46	1.93
<b>Max</b>	214	131	151	839	200	122	100	54	2.7	3.4	14	2.2
<b>Min</b>	1.7	7.8	7.0	12	35	23	22	2.5	2.4	2.2	1.8	1.3
<b>Ac-ft</b>	1,510	1,430	1,030	8,110	3,720	2,560	2,240	972	153	153	274	115

**STATISTICS OF MONTHLY MEAN DATA FOR WATER YEARS 1992 - 2005, BY WATER YEAR (WY)**

	Oct	Nov	Dec	Jan	Feb	Mar	Apr	May	Jun	Jul	Aug	Sep
<b>Mean</b>	4.16	5.00	5.24	18.9	27.9	35.4	17.6	5.77	2.25	1.01	2.16	1.60
<b>Max</b>	24.5	24.0	16.7	132	115	128	97.6	15.8	5.44	2.86	14.0	5.82
<b>(WY)</b>	(2005)	(2005)	(2005)	(2005)	(1993)	(1993)	(1998)	(2005)	(1995)	(1998)	(2000)	(1997)
<b>Min</b>	0.85	1.91	2.43	3.12	3.10	2.98	2.95	2.18	0.65	0.15	0.16	0.56
<b>(WY)</b>	(2004)	(2004)	(1992)	(2002)	(2002)	(2002)	(2002)	(1996)	(1996)	(1997)	(2003)	(2001)

09413900 BEAVER DAM WASH NEAR ENTERPRISE, UT—Continued

SUMMARY STATISTICS

	Calendar Year 2004		Water Year 2005		Water Years 1992 - 2005	
Annual total	3,348.64		11,219.2			
Annual mean	9.15		30.7		10.5	
Highest annual mean					30.7	2005
Lowest annual mean					2.00	2002
Highest daily mean	214	Oct 20	839	Jan 10	1,140	Feb 24, 1998
Lowest daily mean	0.08	Jul 6	1.3	Sep 11	0.00	Aug 8, 1994
Annual seven-day minimum	0.25	Jul 5	1.7	Sep 6	0.02	Aug 11, 2003
Annual runoff (ac-ft)	6,640		22,250		7,610	
10 percent exceeds	20		70		17	
50 percent exceeds	3.3		9.0		3.2	
90 percent exceeds	0.39		2.2		0.50	

