

Helpful Hint #18 - Placement Rate – minimum high school education and Multiple Race (Not Hispanic)

These instructions produce the placement rate for individuals during 2005 with at least a high school education and are identified as Multiple Race (not Hispanic). Microsoft Access was used for this exercise. A basic understanding of Access query design is assumed.

Prior to running queries on the workstation, ODBC (Open DataBase Connectivity) must be installed and properly configured to connect to the PRISM database (http://www.oregon.gov/PRISM/TechnicalInfo.shtml#Desk_Manual). Microsoft Access ODBC configuration is required only once for each workstation. The connection will enable you to connect to PRISM tables needed for completing data analysis.

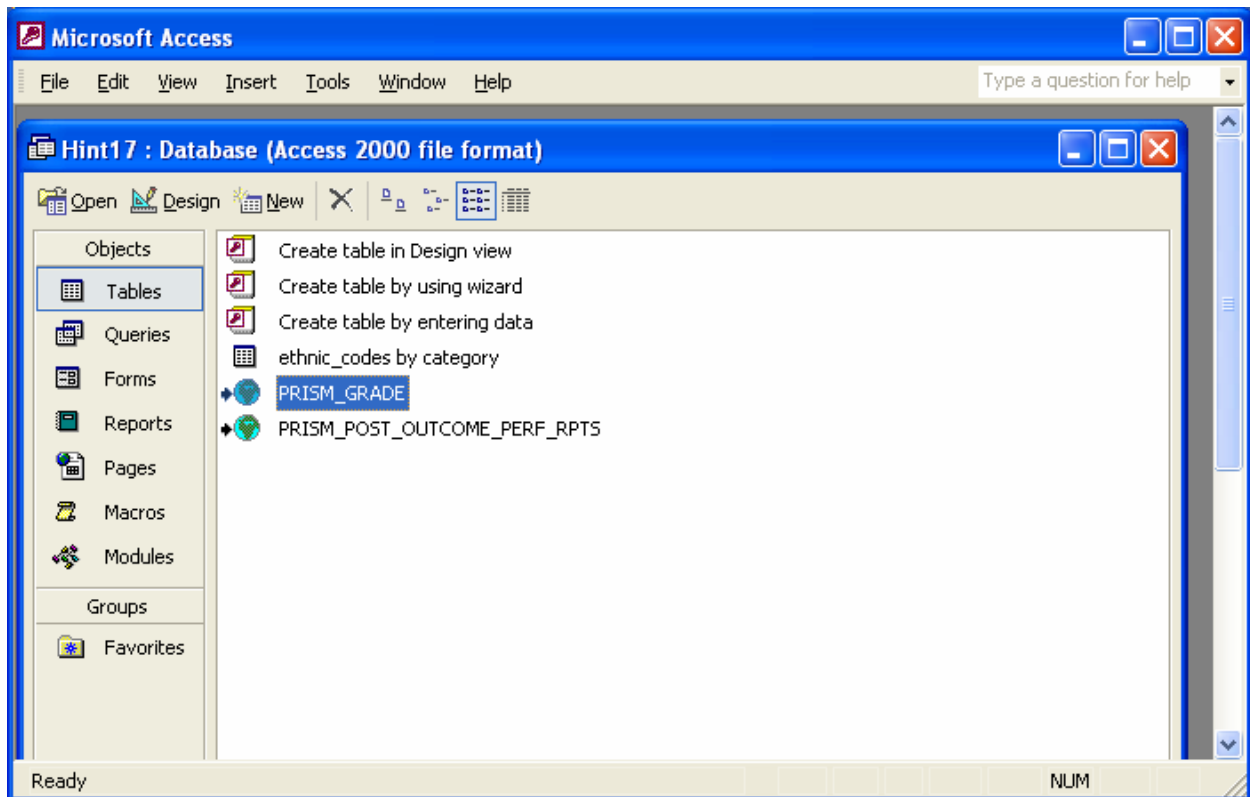
Create Access tables by linking to the following PRISM tables through ODBC.

1. PRISM.POST_OUTCOME_PERF_RPTS
2. PRISM.GRADE

Import the Excel ethnicity table from the PRISM website located in Helpful Hints

3. ethnic_codes by category

Figure 1



Select tables 1, 2 and 3 for the query window
Link tables: (Figure 2)

PRISM_POST_OUTCOME_PERF_RPTS.ETHNICITY to

Helpful Hint #18 - Placement Rate – minimum high school education and Multiple Race (Not Hispanic)

ethnic_codes by category.ethnic_code

PRISM.POST_OUTCOME_PERF_RPTS.LAST_GRADE to
PRISM_GRADE.LAST_GRADE

Select the following fields and criteria: (Figure 2) Note: be sure to click on the “Σ” on the Toolbar.

PRISM.POST_OUTCOME_PERF RPTS table

OUTCOME_YEAR_QTR: Enter >="20051" And <="20054"

(CAF only)

UNSUBSIDIZED_PLACEMENT_YEAR_QTR: (enter >="20051" And <="20054")

PRISM_GRADE table

LG_XWALK: Enter >="12" And <"99" (This captures individuals with at least a high school education.)

Report_codes.Ethnic_codes_by_category table

ethnic_category_codes: Enter “F” (captures records coded “Multiple Race/Other Race (Not Hispanic)”))

Figure 2

The screenshot shows the Microsoft Access Query Design view. The design grid is as follows:

Field:	Placement Rate: Fo	OUTCOME_YEAR_QTR	ethnic_category_codes	LG_XWALK	UNSUB_PLACEMENT_YEAR_QTR
Table:	PRISM_POST_OUTCOME_PERF_RPTS	PRISM_POST_OUTCOME_PERF_RPTS	Ethnic_Race coding by category	PRISM_GRADE	PRISM_POST_OUTCOME_PERF_RPTS
Total:	Expression	Where	Where	Where	Where
Sort:					
Show:	<input checked="" type="checkbox"/>	<input type="checkbox"/>	<input type="checkbox"/>	<input type="checkbox"/>	<input type="checkbox"/>
Criteria:		>="20051" And <="20054"	"F"	>="12" And <"99"	
or:			"F"	>="12" And <"99"	>="20051" And <="20054"

Helpful Hint #18 - Placement Rate – minimum high school education and Multiple Race (Not Hispanic)

Compute the total exited, total employed and placement rate using the following expressions:

Total Exited:

FormatNumber(Sum(IIf(PRISM_POST_OUTCOME_PERF_RPTS!EMPLOYMENT_GOAL_FLAG="1",1,0)),0)

Total Employed:

FormatNumber(Sum(IIf(PRISM_POST_OUTCOME_PERF_RPTS!EMPLOYMENT_GOAL_FLAG="1" And PRISM_POST_OUTCOME_PERF_RPTS!POST_EPISODE_EMPLOYMENT_CODE>"000",1,0)),0)

Placement Rate: Format([Total Employed]/[Total Exited],"Percent")

Include a “group by” using LG_DESC field from PRISM_GRADE (Figure 3)

Figure 3

The screenshot shows the Microsoft Access interface for a query named "qry exited and placed by educ >= 12 and multiRace : Select Query". The design grid is as follows:

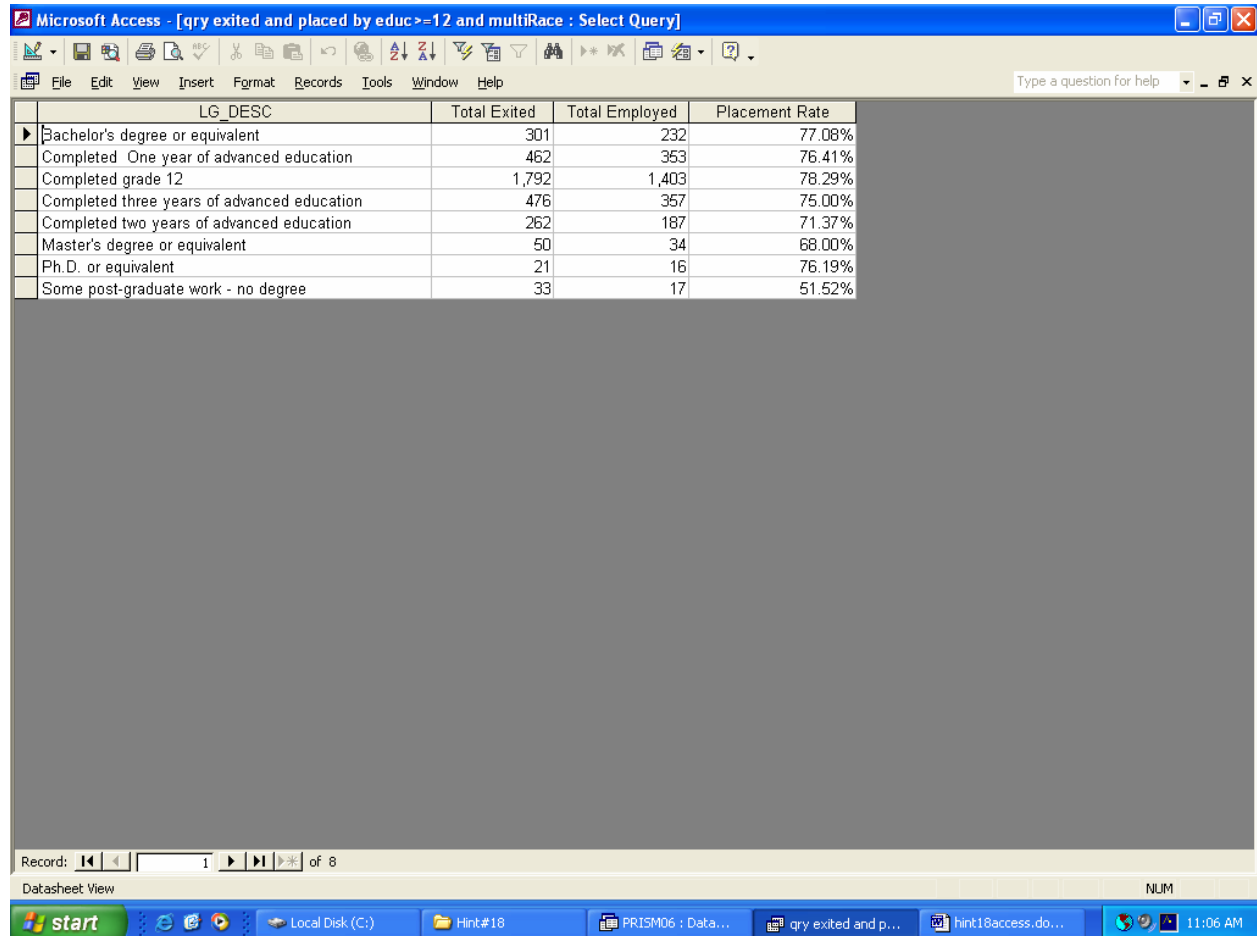
Field:	Total Exited: Forma	Total Employed: Foi	Placement Rate: Fo	OUTCOME_YEAR_QTR	ethnic_category_codes	LG_XWALK	UNSUB_PLA
Table:	PRISM_POST_OUTCOME_PERF_RPTS	PRISM_POST_OUTCOME_PERF_RPTS	PRISM_POST_OUTCOME_PERF_RPTS	PRISM_POST_OUTCOME	Ethnic_Race coding by category	PRISM_GRADE	PRISM_POST_OUTCOME
Total:	Sum(IIf(EMPLOYMENT_GOAL_FLAG="1",1,0))	Sum(IIf(EMPLOYMENT_GOAL_FLAG="1" And POST_EPISODE_EMPLOYMENT_CODE>"000",1,0))	Format([Total Employed]/[Total Exited],"Percent")	Where	Where	Where	Where
Group By:							
Sort:							
Show:	<input checked="" type="checkbox"/>	<input checked="" type="checkbox"/>	<input checked="" type="checkbox"/>	<input type="checkbox"/>	<input type="checkbox"/>	<input type="checkbox"/>	
Criteria:				>="20051" And <="20054"	"F"	>="12" And <"99"	
or:					"F"	>="12" And <"99"	>="20051"

Helpful Hint #18 - Placement Rate – minimum high school education and Multiple Race (Not Hispanic)

Before running the query, uncheck the “show” box for fields OUTCOME_YEAR_QTR, ethnic_category_codes, LG_XWALK and UNSUB_PLACEMENT_YEAR_QTR.

Run query for results: (Figure 4) Note: the results shown are statewide results. Total Exited and Total Employed counts will be smaller for individual agencies.

Figure 4



LG_DESC	Total Exited	Total Employed	Placement Rate
Bachelor's degree or equivalent	301	232	77.08%
Completed One year of advanced education	462	353	76.41%
Completed grade 12	1,792	1,403	78.29%
Completed three years of advanced education	476	357	75.00%
Completed two years of advanced education	262	187	71.37%
Master's degree or equivalent	50	34	68.00%
Ph.D. or equivalent	21	16	76.19%
Some post-graduate work - no degree	33	17	51.52%