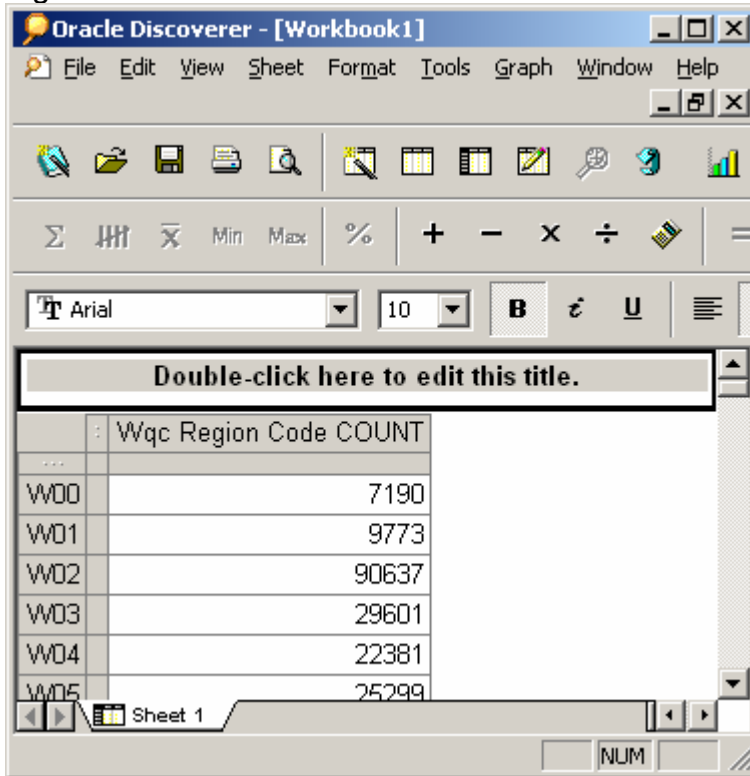


Helpful Hint #14 –Placement Measure using Oracle Discoverer

Purpose: Use Oracle Discoverer to extract the placement performance measure denominator (Total Exited) and the numerator (Total Employed). This example is by workforce region, services completed between Q3 2003 and Q2 2004 (July 1, 2003 through June 30, 2004). (Figure 1)

Figure 1



The screenshot shows the Oracle Discoverer interface with a data table. The table has two columns: 'Wqc Region Code' and 'COUNT'. The data rows are as follows:

Wqc Region Code	COUNT
W00	7190
W01	9773
W02	90637
W03	29601
W04	22381
W05	25299

Helpful Hint #14 –Placement Measure using Oracle Discoverer

About Oracle Discoverer

Refer to the Desk Manual, <http://www.prism.state.or.us/technical-info.htm>, pages 42 – 49.

Open a Discover Oracle session.*

A window appears requesting your Username, Password and Connect (or Database) information. Type the logon information provided to you by the PRISM System Administration staff and click the **Connect** button.

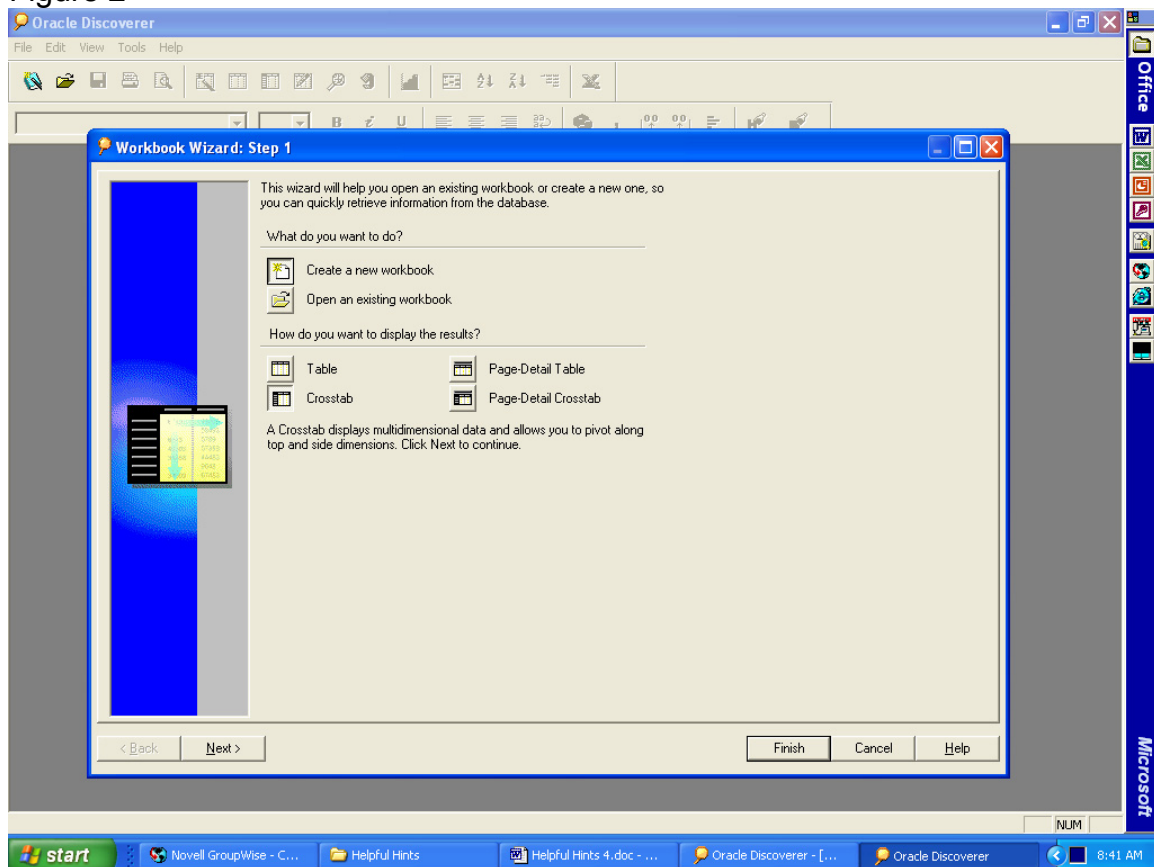
*The shortcut icon to run the Oracle Discoverer End User Application is in the PRISM DB Queries folder placed on your desktop during installation.

Creating a Workbook

The Workbook Wizard window appears. (Figure 2)

- Click on “Create a new workbook”
- Click “Crosstab”

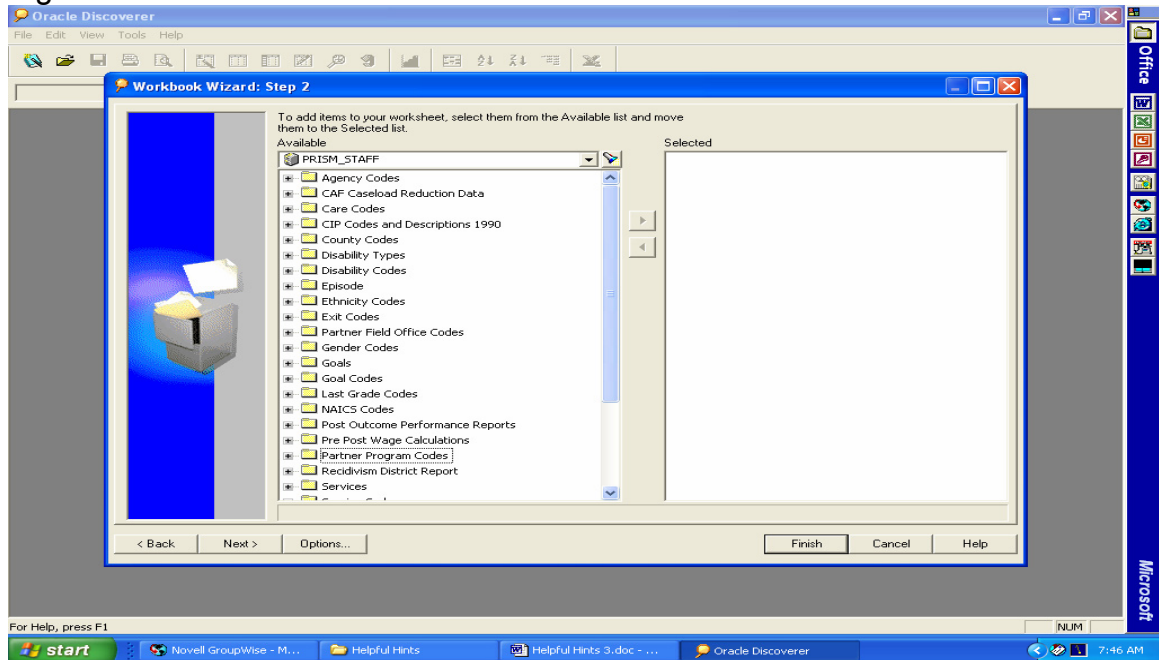
Figure 2



Helpful Hint #14 –Placement Measure using Oracle Discoverer

A window displays all tables in PRISM (Figure 3)

Figure 3



Note: Agency data and wage information have been compiled in the Post_Outcome_Performance Report table. The performance measures are extracted from this table.

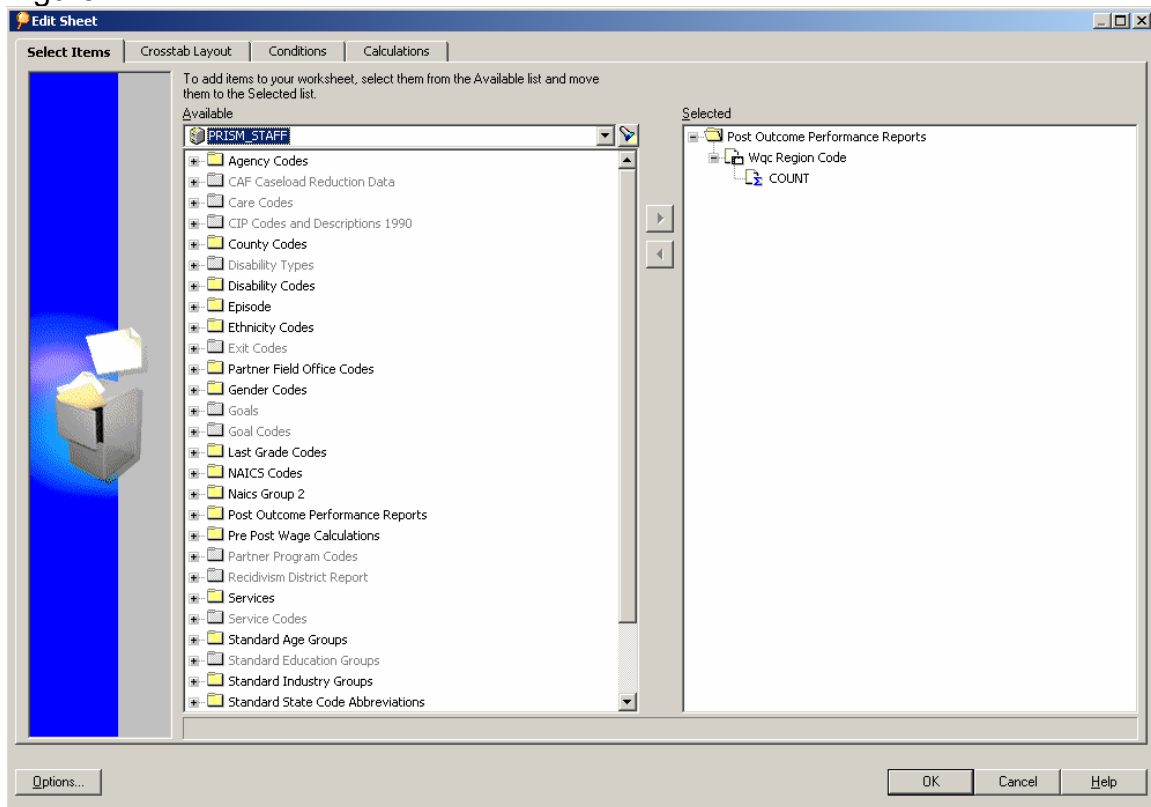
Helpful Hint #14 –Placement Measure using Oracle Discoverer

Select Items

- Click the “+” for Post Outcome Performance Reports to display the fields
- Click the “+” for Wqc Region Code (Count, Max, Min)
- Highlight Wqc Region Code and click on the forward arrow to move the field to the right window. Right window fields will be on the report
- Highlight “Count” and click the forward arrow to move the Wqc Count field to the right window
- Click “ok” at the bottom of the screen

Tip: Move each of the Wqc Region and Wqc Region Count fields in two separate operations, otherwise the count will be an aggregate of all regions, not by each region. (Figure 4)

Figure 4



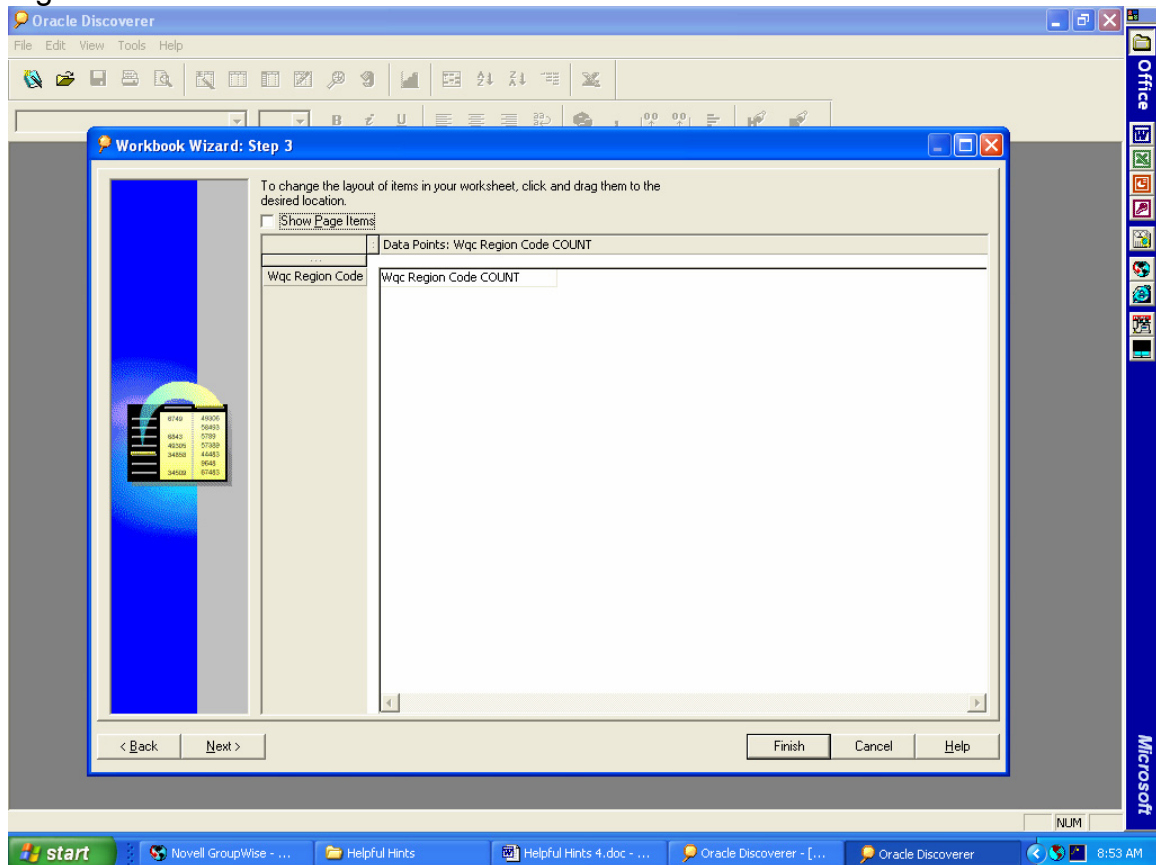
Helpful Hint #14 –Placement Measure using Oracle Discoverer

Crosstab Layout

The following message appears “No data can be displayed in the crosstab because there are no rows. To add a row drag an item from the column area.”

- Drag and drop the “WQC Region Code “ item into the left axis. (Figure 5)

Figure 5



Helpful Hint #14 –Placement Measure using Oracle Discoverer

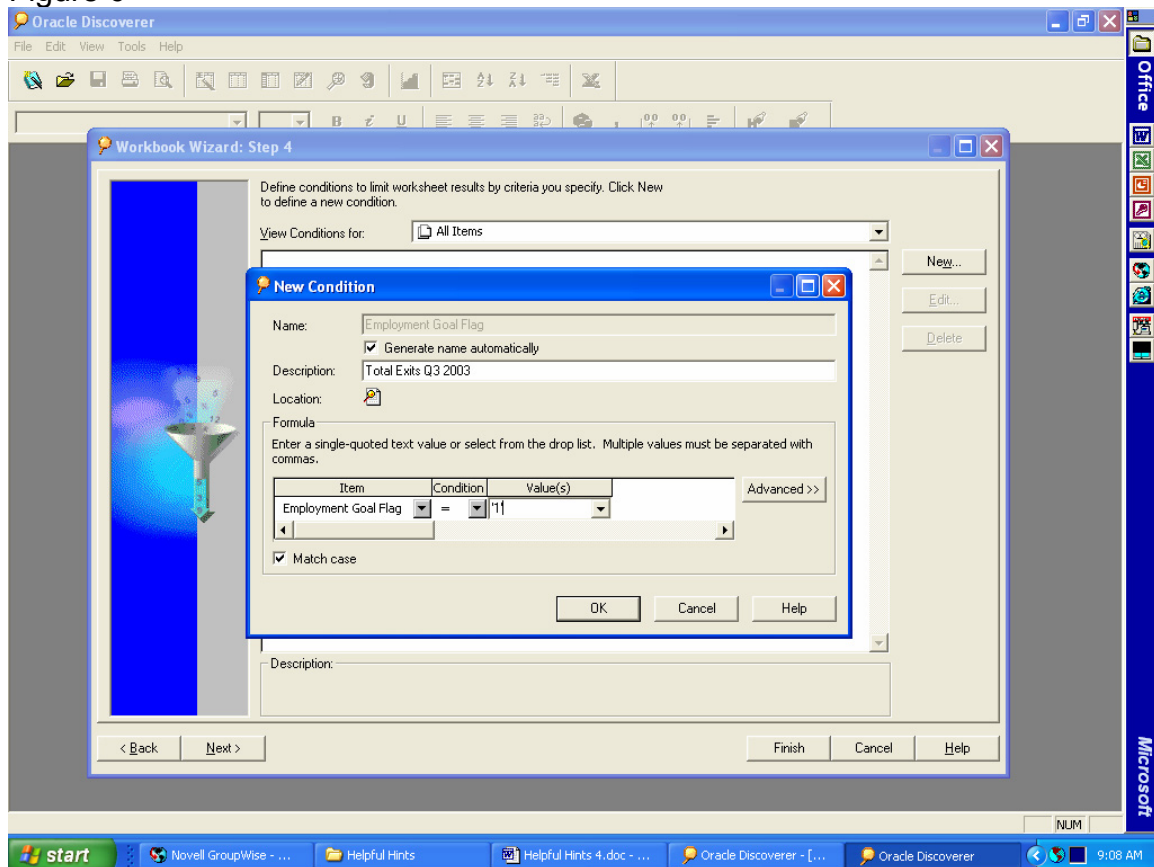
Setting Conditions

Placement Denominator

The criteria for placement denominator are: completion of services (having an outcome date) and a goal of employment (flag=1).

- Click “New” or “Edit”
- Select item: Post Outcome Performance Reports.Employment Goal Flag
- Condition = ‘1’ (bracket with single quotes)
- Select item: Post Outcome Performance Reports.Outcome Year Qtr Between ‘20033’ and ‘20042’
- Click “OK” (Figure 6, 7 and 8)

Figure 6



Helpful Hint #14 –Placement Measure using Oracle Discoverer

Figure 7

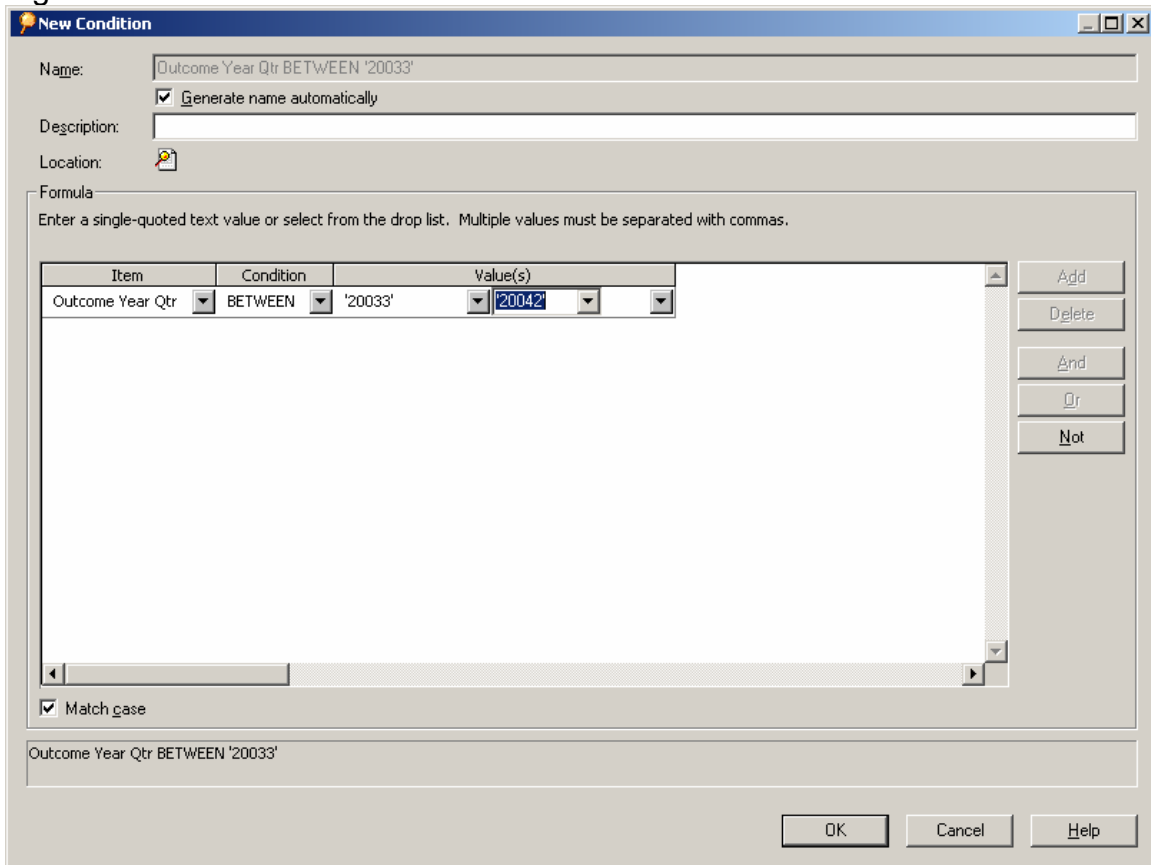
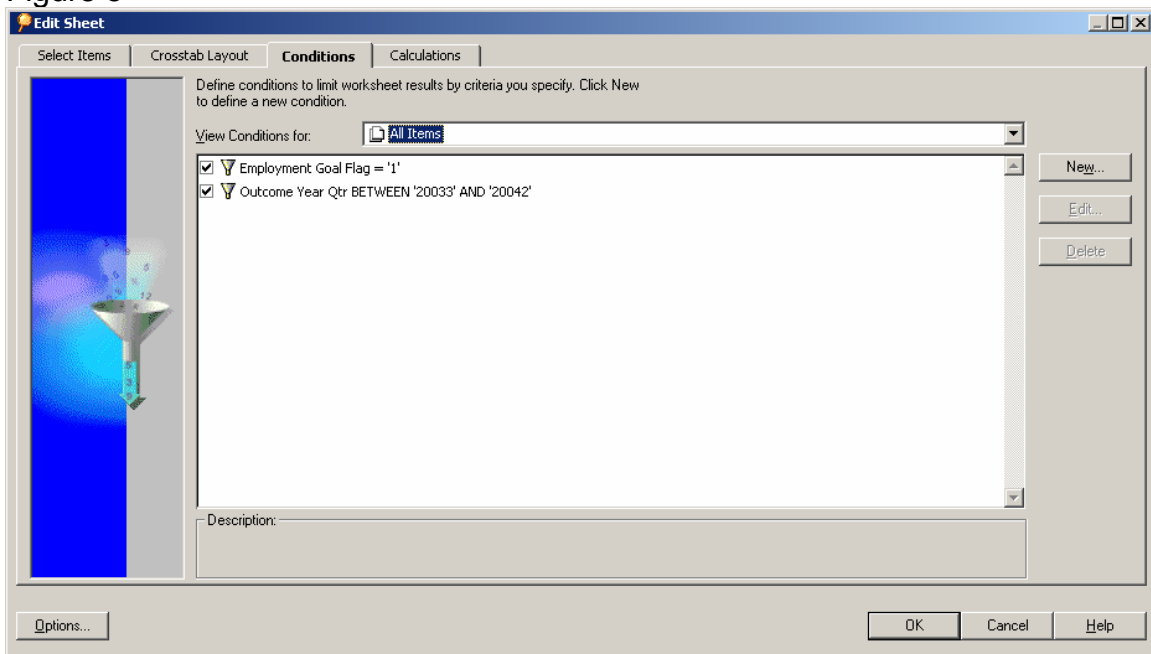


Figure 8



Helpful Hint #14 –Placement Measure using Oracle Discoverer

CAF staff only –

DHS: Children, Adults and Families requires an additional criteria to identify all service completers. Add Post Outcome Performance Report.Unsubsidized Placement Year Qtr.

In conditions tab, select Outcome Year Qtr

- Click “Edit”
- Click “Advanced”
- Click “Add”
- Click “And” to change it to “Or”
- Select: Post Outcome Performance Report.Unsub Placement Year Qtr
- Condition Between ‘20033’ and ‘20042’ (Figure 9)

Figure 9

Name: (Outcome Year Qtr BETWEEN '20033' AND '20042' OR Unsub Placement Year Qtr BETWEEN '20033' AND '20042')

Generate name automatically

Description:

Location:

Formula

Group	Item	Condition	Value(s)
OR	Outcome Year Qtr	BETWEEN	'20033' and '20042'
	Unsub Placement Year Qtr	BETWEEN	'20033' and '20042'

Match case

(Outcome Year Qtr BETWEEN '20033' AND '20042' OR Unsub Placement Year Qtr BETWEEN '20033' AND '20042')

OK Cancel Help

Helpful Hint #14 –Placement Measure using Oracle Discoverer

Setting Conditions Continued

Placement Numerator

The criteria for placement numerator are: completion of services (having an outcome date), a goal of employment (flag =1), and hours/wages within six months of exiting services. This last condition is expressed as Post Outcome Employment Code>'000'.

- Click “New”
 - Select Item: Post Outcome Performance Report .Post Episode Employment Code
 - Condition > '000' (bracket 000 with single quotes)
- (Figure 10)

Figure 10

The screenshot shows the 'New Condition' dialog box with the following details:

- Name:** Post Episode Employment Code
- Generate name automatically
- Description:** (empty)
- Location:** (empty)
- Formula:** Enter a single-quoted text value or select from the drop list. Multiple values must be separated with commas.

Item	Condition	Value(s)
Post Episode Employment Code	>	'000'

Match case

Buttons: OK, Cancel, Help

Helpful Hint #14 –Placement Measure using Oracle Discoverer

Run the query twice

1. Total Employed – check Post Episode Employment Code
2. Total Exited – uncheck Post Episode Employment Code (Figure 11)

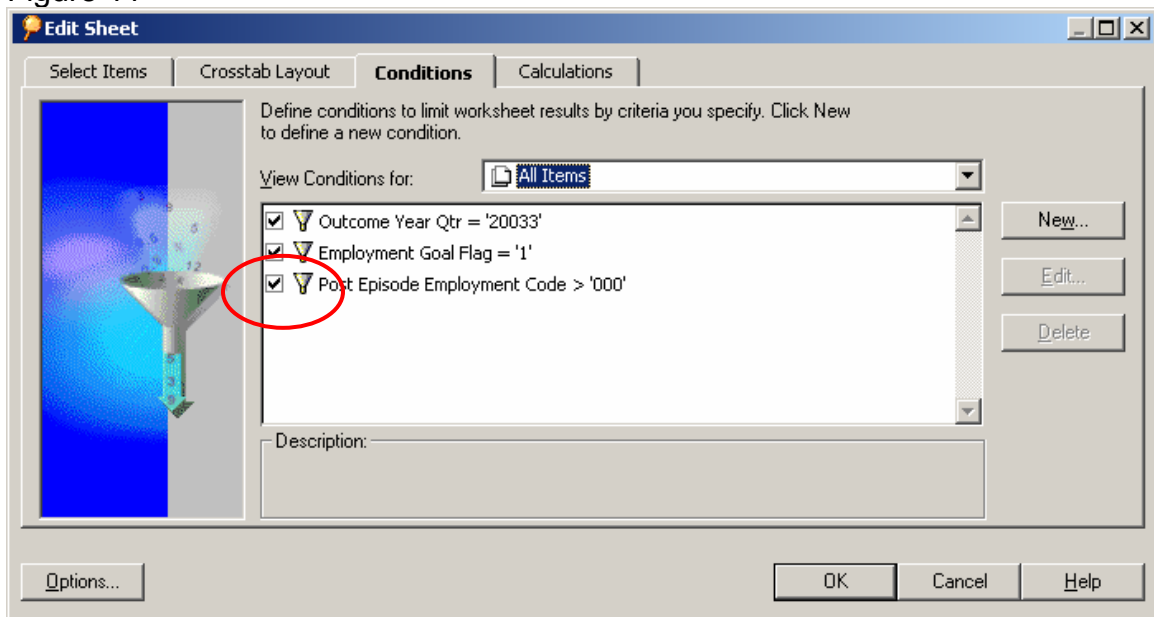
The Placement Rate

- Copy and paste results of query 1 and query 2 above into a spreadsheet.
- Compute the rate (Total Employed/Total Exited) (Table 1)

Table 1

Oracle Placement Query					
	Employed		Exited		Rate
W00	3,533	W00	7,190		49%
W01	6,755	W01	9,712		70%
W02	63,540	W02	89,092		71%
W03	21,067	W03	29,068		72%
W04	15,496	W04	22,183		70%
W05	17,691	W05	24,794		71%
W06	5,379	W06	7,579		71%
W07	6,403	W07	8,951		72%
W08	14,097	W08	19,277		73%
W09	3,893	W09	5,196		75%
W10	11,274	W10	14,438		78%
W11	4,300	W11	5,937		72%
W12	7,460	W12	10,024		74%
W13	4,003	W13	5,601		71%
W14	3,552	W14	5,784		61%
W15	16,101	W15	22,085		73%

Figure 11



Helpful Hint #14 –Placement Measure using Oracle Discoverer

To Edit the query or change layout, variables, conditions or calculations:

- Click on the Edit Icon (Figure 12)

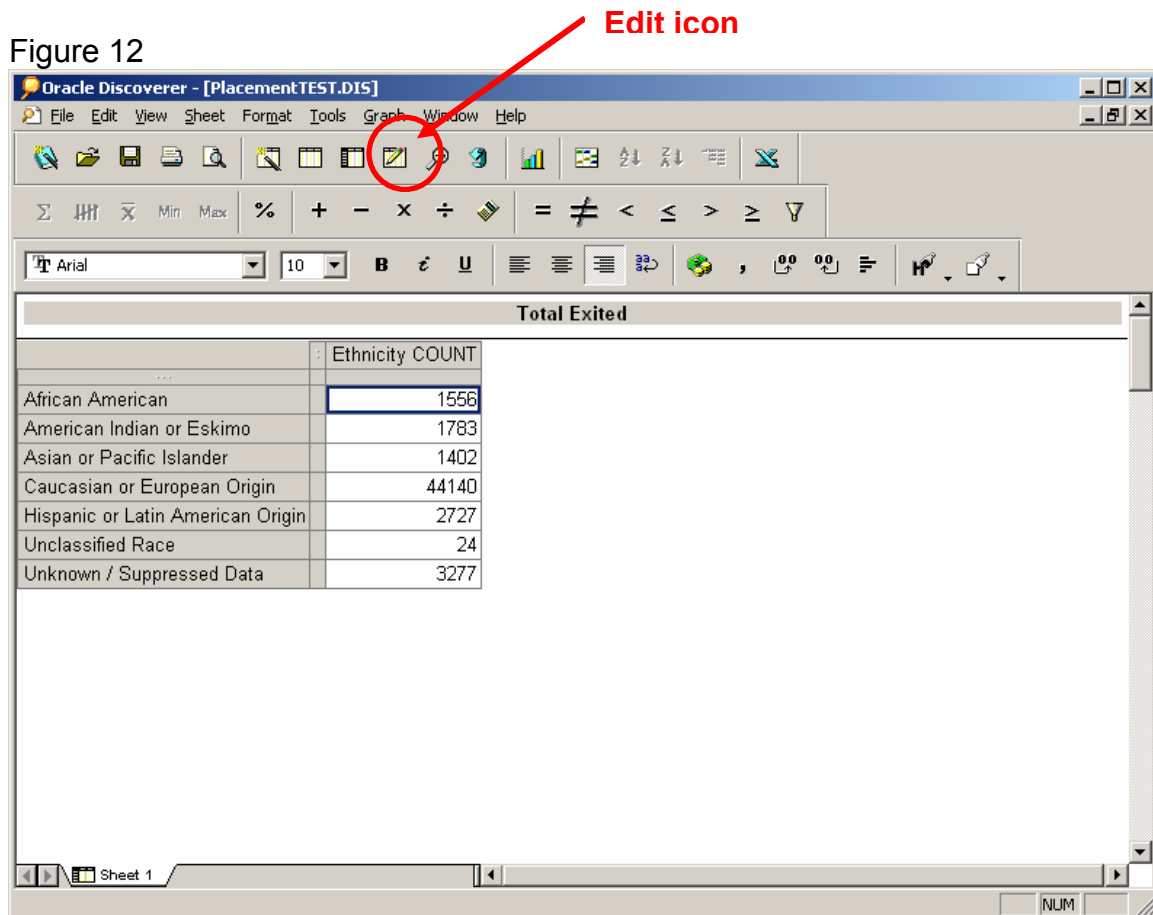
REPORT VARIATION - Ethnicity

To change the report variable breakout from WQC region to ethnicity categories

- Click on the Edit Icon
- Select Items
- Click on “+” at Ethnicity Codes
- Click forward button to move “Ethnics” field to right window
- Click forward button to move “Count” field to right window.

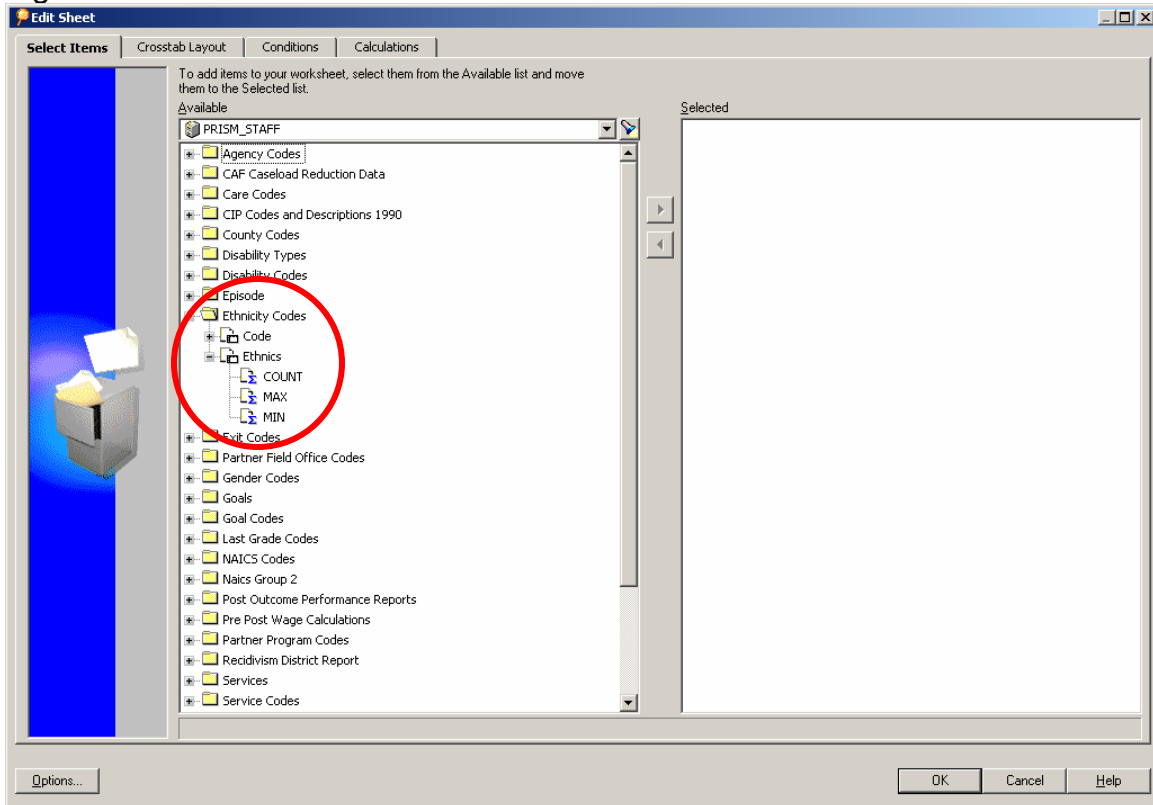
(Figures 12 and 13)

Figure 12



Helpful Hint #14 –Placement Measure using Oracle Discoverer

Figure 13



Note: The ad hoc query results will be comparable to the latest report data published on the PRISM website but not with archived reports.