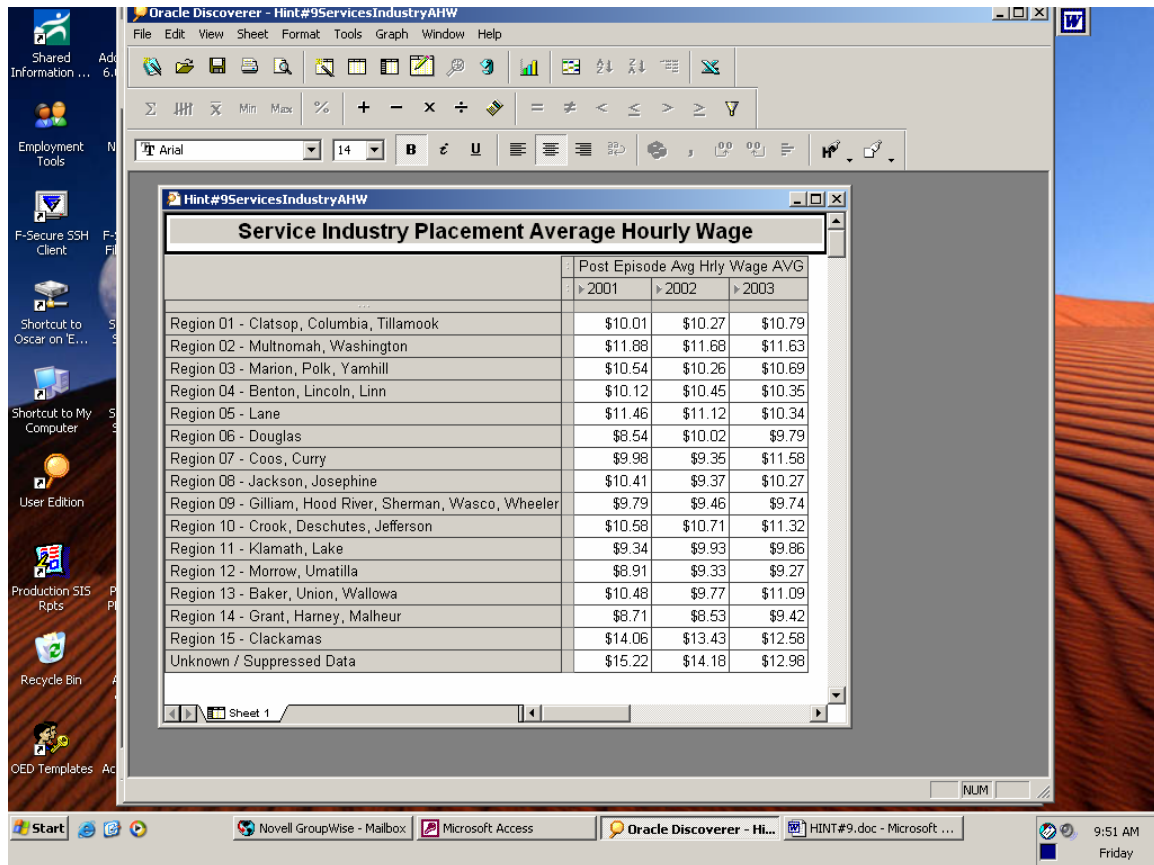


HINT #9 Cross Tab – AVERAGE HOURLY WAGE (Services Industry)

Hint #9 is a step-by-step process to display Average Hourly Wage using Oracle Discoverer (Figure 1). In this exercise the row are Workforce Region average hourly wage at placement for a single industry – The Services Industry – for Outcome Year 2001, 2002 and 2003.

For information on Oracle Discoverer refer to the Desk Manual (pages 42-49).

Figure 1

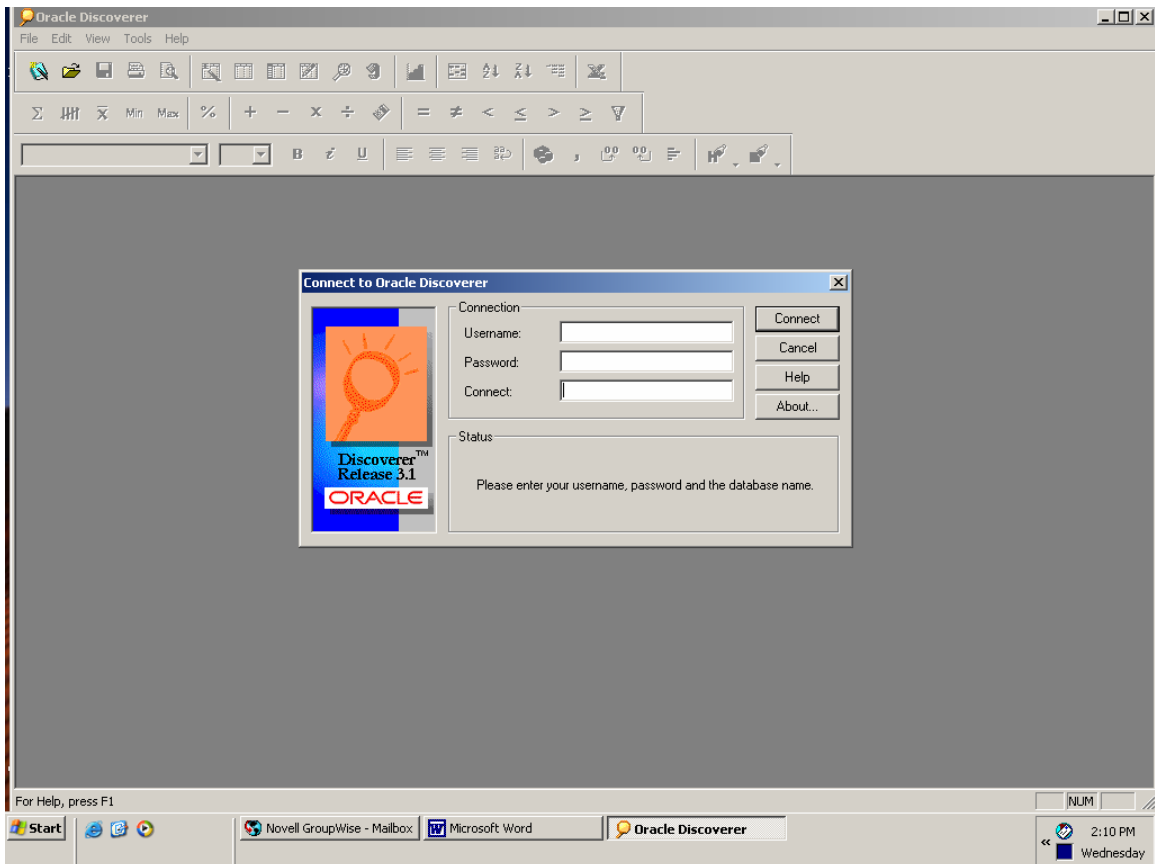


HINT #9 Cross Tab – AVERAGE HOURLY WAGE (Services Industry)

Open a Discoverer Oracle session

- You will find the shortcut icon to run the Oracle Discoverer End User Application in the PRISM DB queries folder placed on your desktop during installation.
- A window appears requesting your Username, Password and Connect (or Database) information. (See figure 52 in the Desk Manual).
- Type the logon information provided by the PRISM system administration staff and click the **Connect** button (Figure 2).

Figure 2



HINT #9 Cross Tab – AVERAGE HOURLY WAGE (Services Industry)

Step 1 Workbook Wizard window appears (Figure 3).

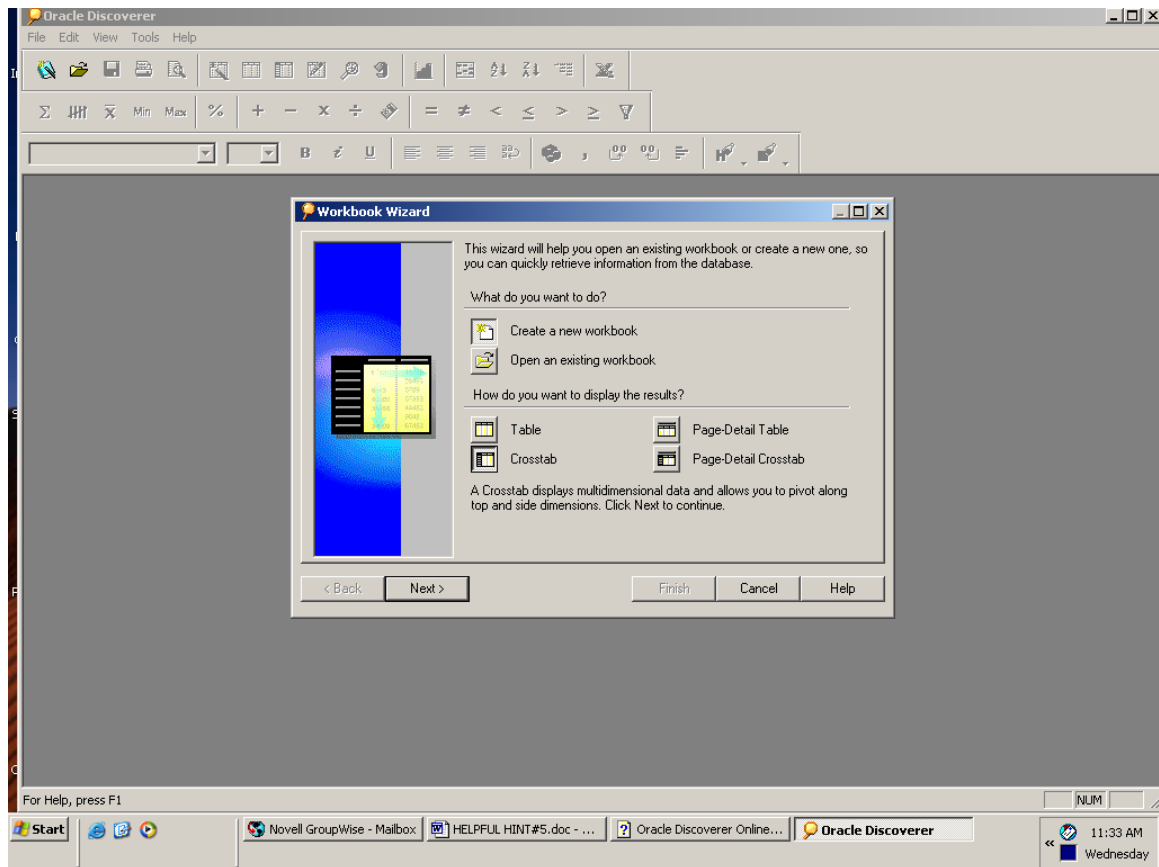
What do you want to do?

- Click on “Create a new workbook”

How do you want to display results?

- Click on “Crosstab”
- Click “Next”

Figure 3



HINT #9 Cross Tab – AVERAGE HOURLY WAGE (Services Industry)

Step 2 Add items to your worksheet - SELECT ITEMS tab (Figure 4).

Everything on the right side of the window will be included in the layout results.

- Scroll down Available list to “Post Outcome Performance Report” table
- Click on the “+” icon to open up the submenus
- Click on the “+” icon at Post Episode Average Hourly Wage
- Select “Average”
- Select “Outcome Dt Year”

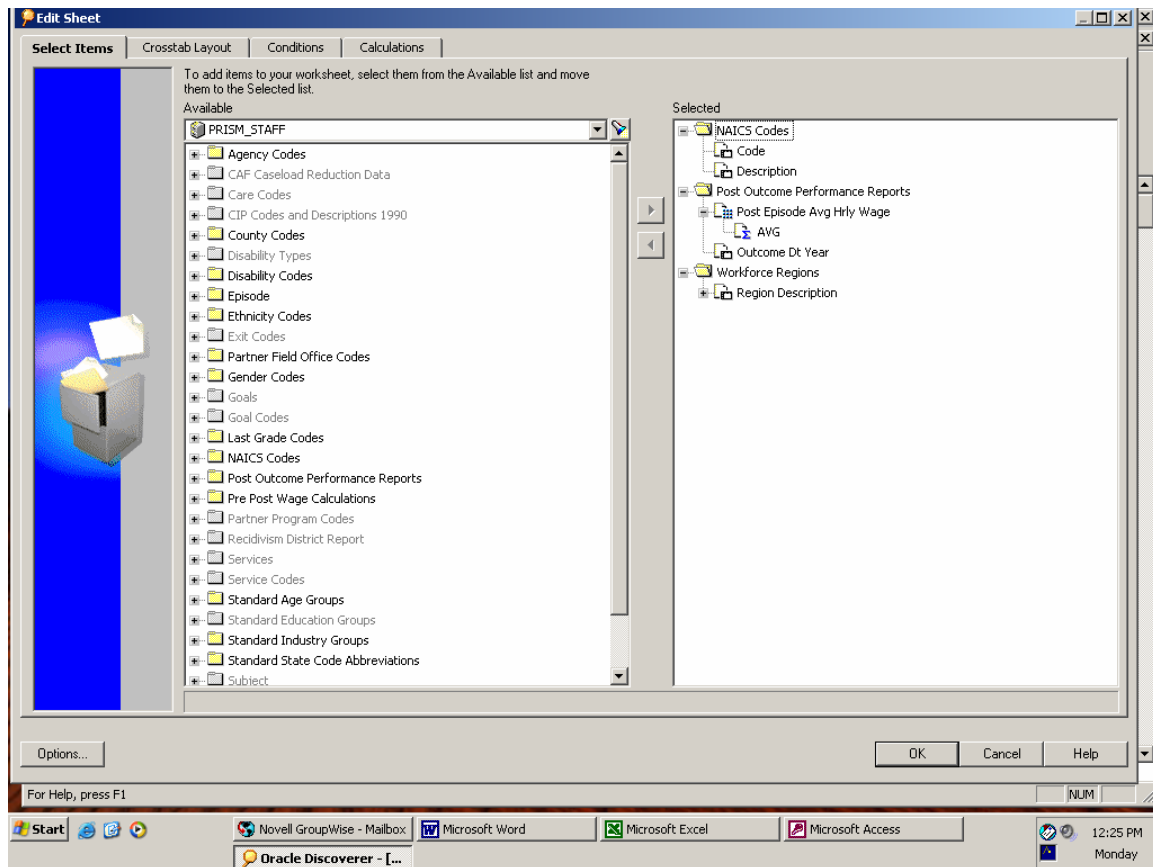
To have the region names displayed in the layout rather than region codes, go back up the hierarchy to the yellow folder level, scroll down the list of tables to “Workforce Region Table”

- Select “Region Description”

To create an Industry option in the CONDITIONS step

- Select NAICS
- Click “OK”

Figure 4



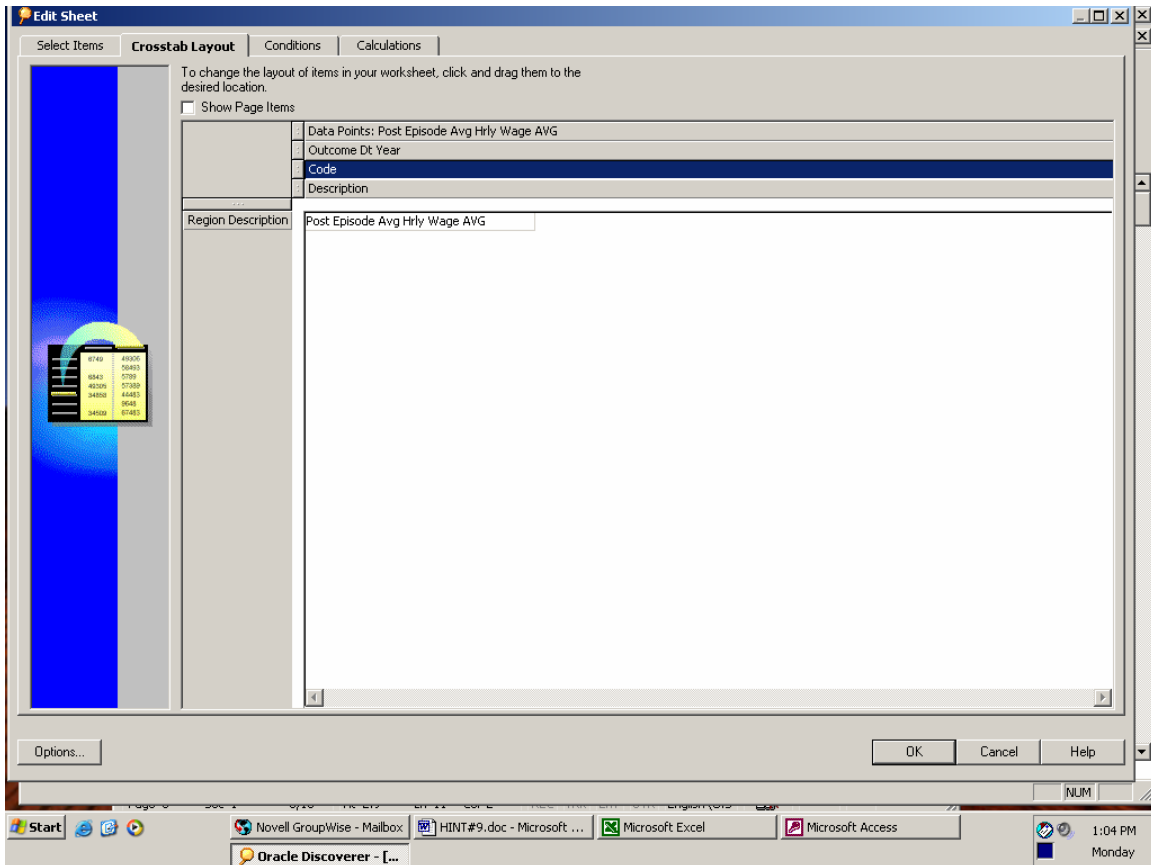
HINT #9 Cross Tab – AVERAGE HOURLY WAGE (Services Industry)

Step 3 The Crosstab Layout window appears (Figure 5).

Use drag and drop to organize the layout

- Row titles field are far left of the pane
- Column header fields are above the pane
- Data point field is in the pane
- Click “OK”

Figure 5



HINT #9 Cross Tab – AVERAGE HOURLY WAGE (Services Industry)

Step 4 The Edit Conditions screen appears (Figure 6).

Select NEW Condition

Under “Formula” section, set the item, conditions, and values:

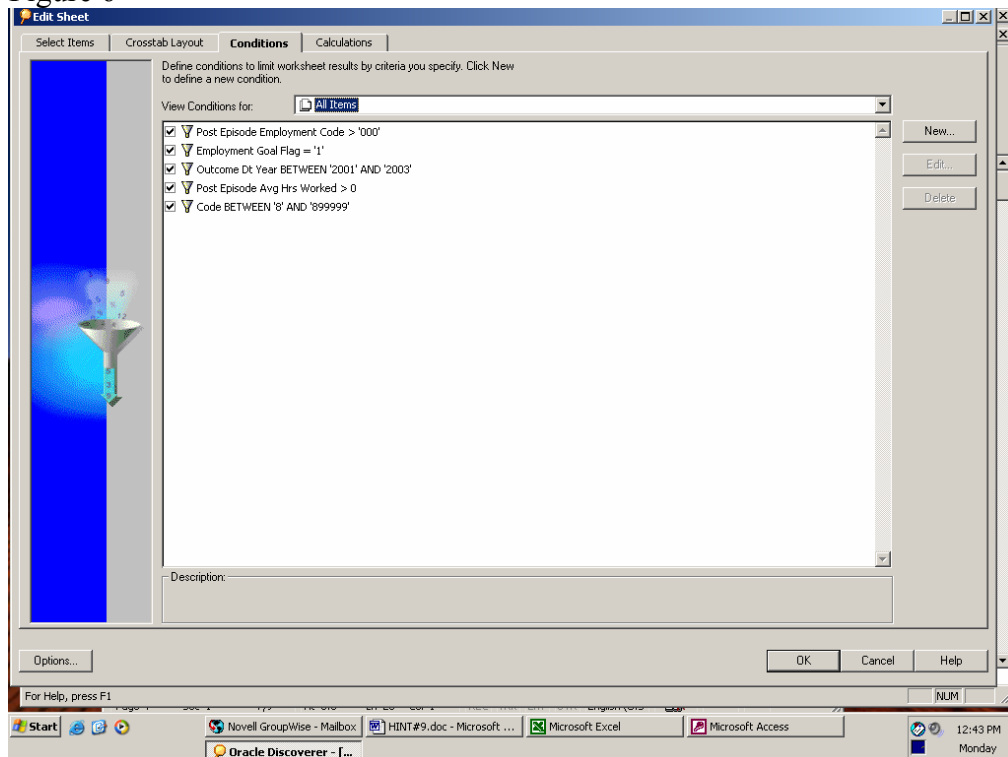
- Item Outcome Dt Year
- Condition Between
- Values ‘2001’ (add single quotes for text) And ‘2003’

- Item Employment Goal
- Condition =
- Values ‘1’

- Item Average Hours Worked
- Condition >
- Values 0 (no single quotes for numbers)

- Item NAICS code
- Condition between
- Values ‘8’ and “899999” (NAICS codes have up to 6 digits).
- Click “ok”

Figure 6



HINT #9 Cross Tab – AVERAGE HOURLY WAGE (Services Industry)

Go “Back” to SELECT ITEMS tab

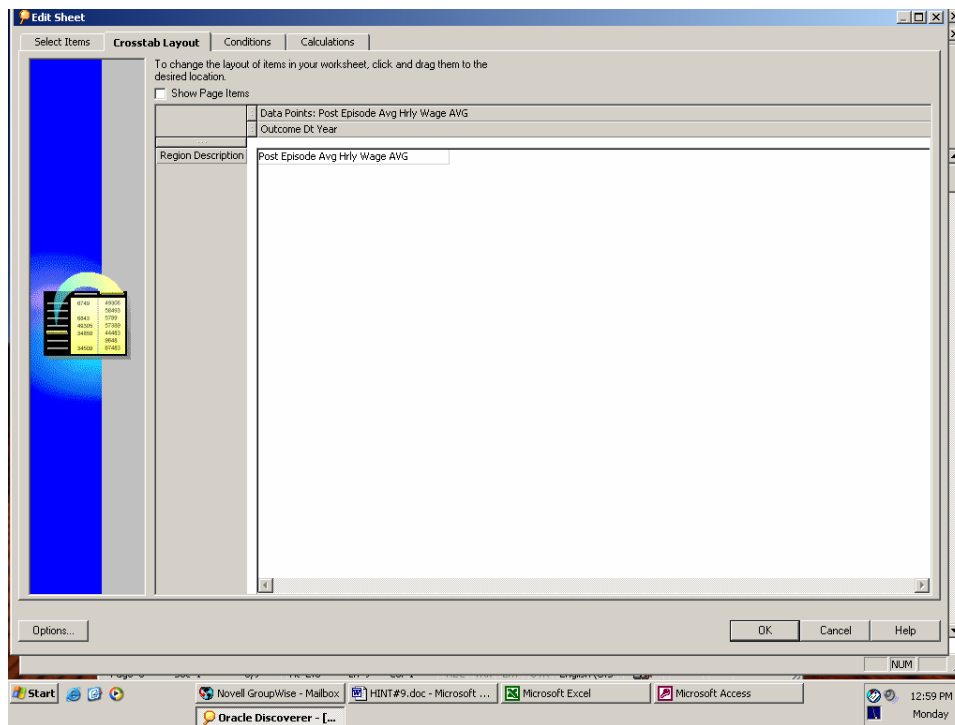
- Deselect NAICS code

IMPORTANT: Although an industry field is not seen in the final layout (Figure 1), setting the industry code is a key criteria. In order to display as an option in **CONDITIONS**, the NAICS field has to first be selected at the **SELECT ITEMS** step. After setting the condition and values, deselect NAICS. Otherwise every job title in the Services Industry will be listed in the final results. (Figure 7)

CALCULATIONS TAB

No calculations were made for this query.

Figure 7



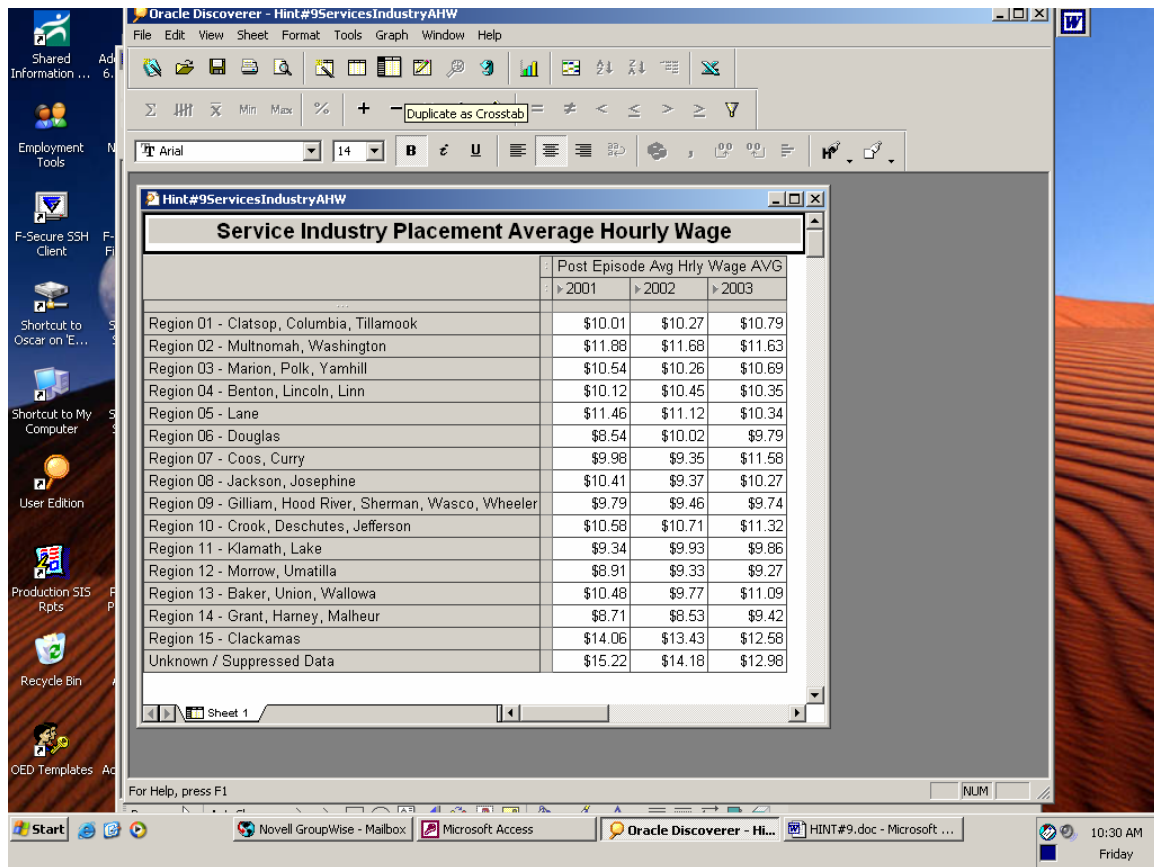
HINT #9 Cross Tab – AVERAGE HOURLY WAGE (Services Industry)

Step 7 If your results aren't what you expect or if you want to change the conditions:

- Select “Edit” Sheet to change any condition (Figure 8)

Use FORMAT/Data to change numbers to currency format.

Figure 8

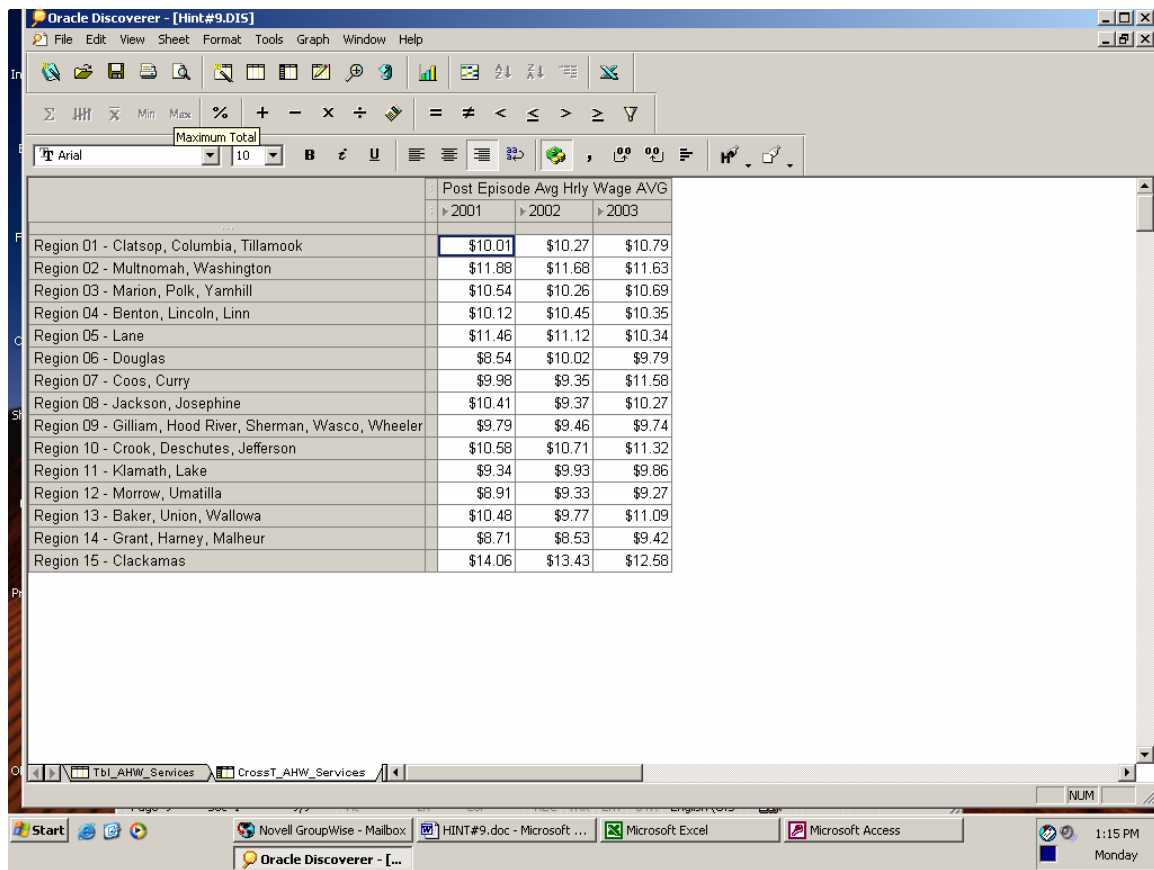


HINT #9 Cross Tab – AVERAGE HOURLY WAGE (Services Industry)

Step 8 For an additional exercise, run the query without Unknown/Suppressed Region information. (Figure 9).

- Add New CONDITION
- Region Code <> 'W00'.

Figure 9



The screenshot shows the Oracle Discoverer interface with a cross-tab report. The report title is "Post Episode Avg Hrly Wage AVG". The columns represent the years 2001, 2002, and 2003. The rows list 15 different regions. The data is as follows:

	2001	2002	2003
Region 01 - Clatsop, Columbia, Tillamook	\$10.01	\$10.27	\$10.79
Region 02 - Multnomah, Washington	\$11.88	\$11.68	\$11.63
Region 03 - Marion, Polk, Yamhill	\$10.54	\$10.26	\$10.69
Region 04 - Benton, Lincoln, Linn	\$10.12	\$10.45	\$10.35
Region 05 - Lane	\$11.46	\$11.12	\$10.34
Region 06 - Douglas	\$8.54	\$10.02	\$9.79
Region 07 - Coos, Curry	\$9.98	\$9.35	\$11.58
Region 08 - Jackson, Josephine	\$10.41	\$9.37	\$10.27
Region 09 - Gilliam, Hood River, Sherman, Wasco, Wheeler	\$9.79	\$9.46	\$9.74
Region 10 - Crook, Deschutes, Jefferson	\$10.58	\$10.71	\$11.32
Region 11 - Klamath, Lake	\$9.34	\$9.93	\$9.86
Region 12 - Morrow, Umatilla	\$8.91	\$9.33	\$9.27
Region 13 - Baker, Union, Wallowa	\$10.48	\$9.77	\$11.09
Region 14 - Grant, Harney, Malheur	\$8.71	\$8.53	\$9.42
Region 15 - Clackamas	\$14.06	\$13.43	\$12.58

Step 8 Save the Oracle Discoverer session.

This session can be run or modified any time after you logon to the Oracle Discoverer and connect to the PRISM database.