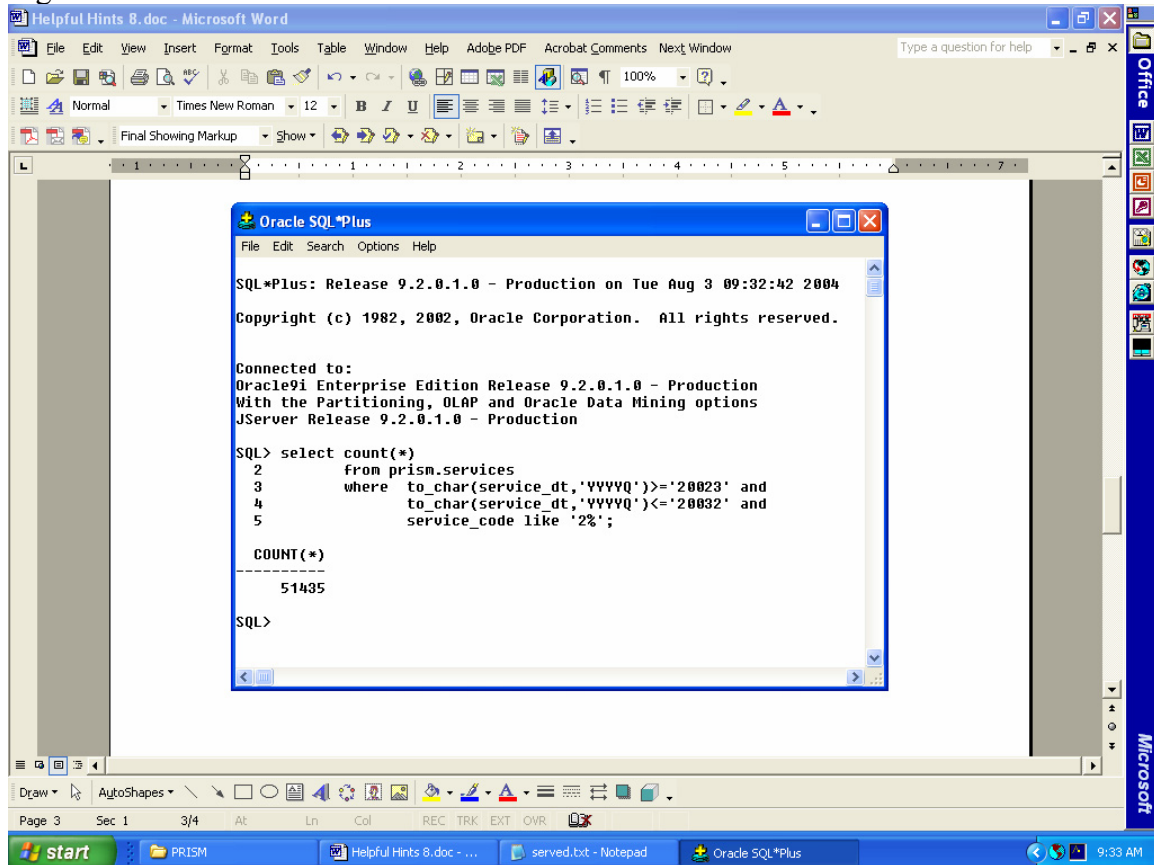


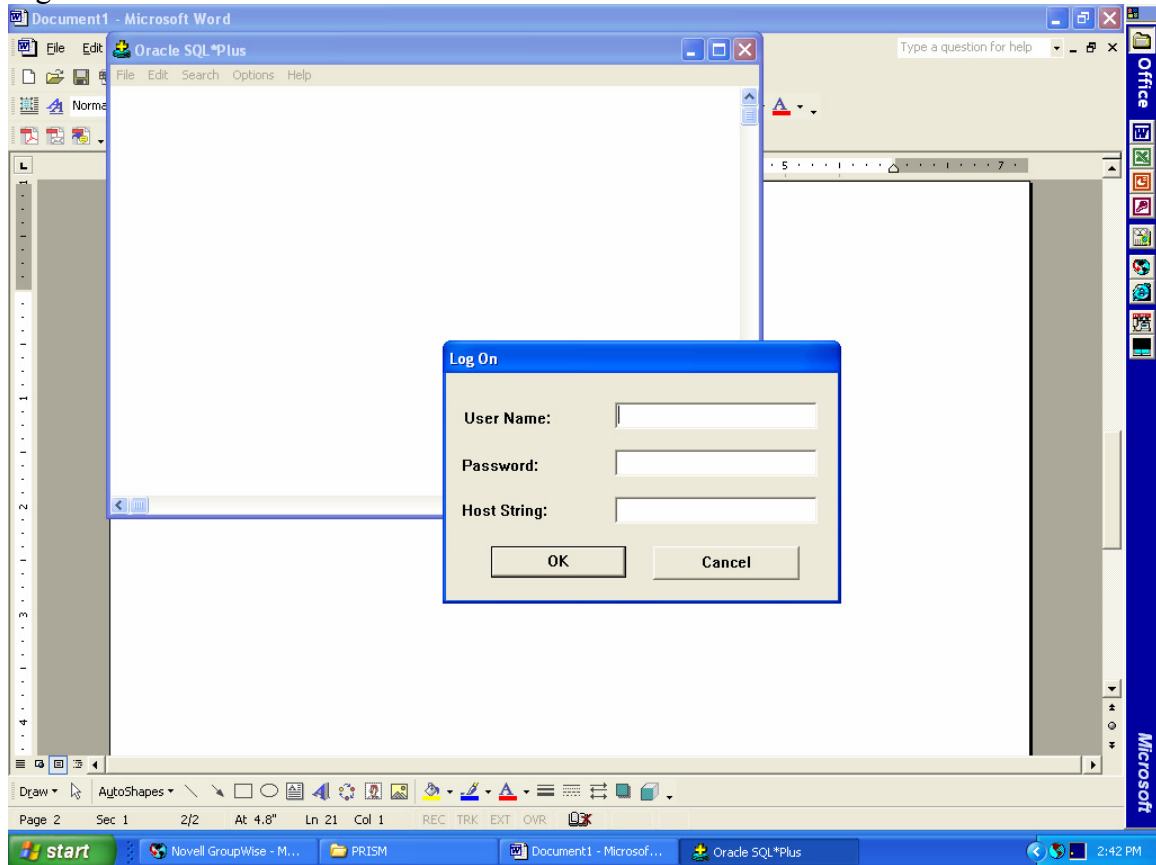
You want a count of a particular service for a given period. Helpful Hints #8 uses SQL*Plus to produce a count of support services for a time period of July 1, 2002 through June 30, 2003 (Figure 1).

Figure 1



Step 2 – Log on to SQL*Plus by entering your user name, password, and host string. More information about SQL*Plus is available in the Desk Manual, beginning on page 40 (Figure 2).

Figure 2



You have been asked to produce a count of records with a support service for the time period July 1, 2002 through June 30, 2003.

Step 2 – Paste the following sql statement at the sql prompt to get a count of customers with a support service (code 200 – 290) during July 1, 2002 through June 30, 2003. After you paste the statement after the sql prompt, hit the enter key.

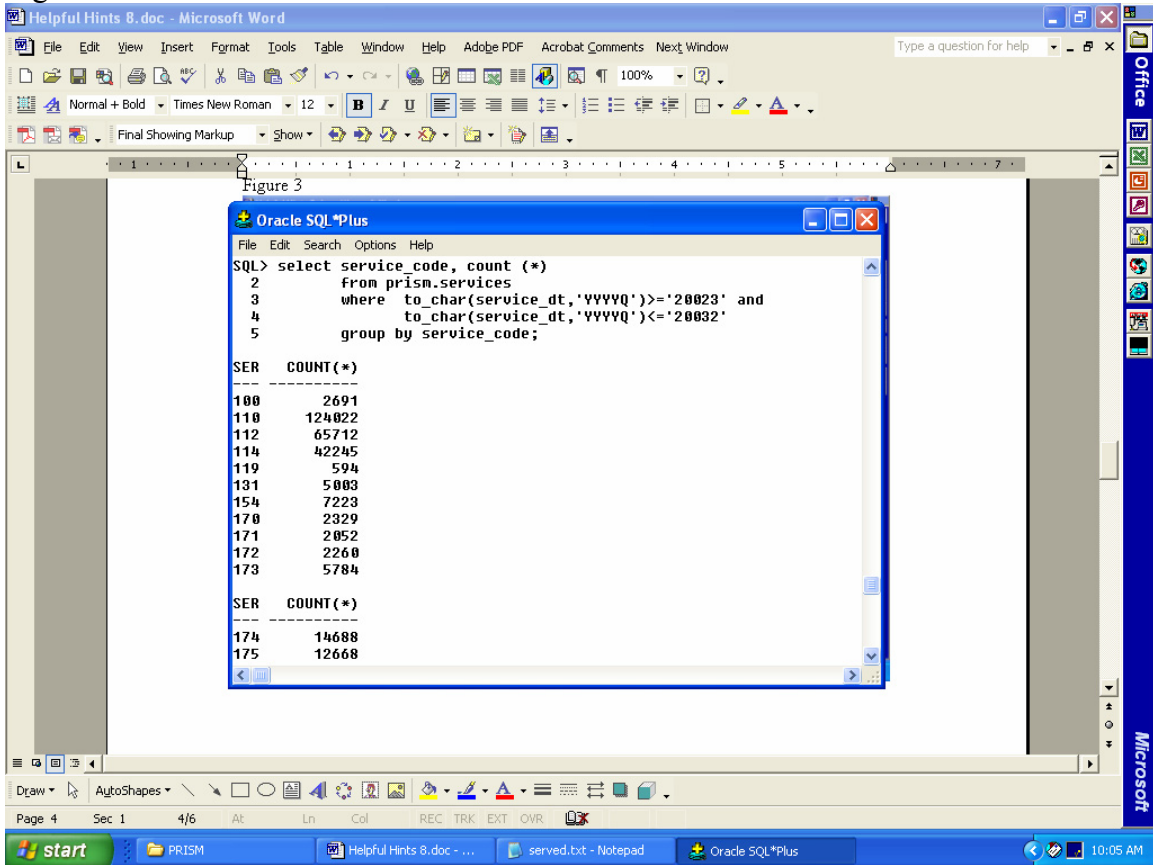
```
select count(*)  
  from prism.services  
  where to_char(service_dt,'YYYYQ')>='20023' and  
        to_char(service_dt,'YYYYQ')<='20032' and  
        service_code like '2%';
```

The “like 2%” will produce a count of any code in the 200 series.

Now you want a count of all services for the same time period. Paste the following sql statement at the sql prompt and hit enter. The result is a count by service code for the period of July 1, 2002 through June 30, 2003 (Figure 3).

```
select service_code, count (*)  
  from prism.services  
  where to_char(service_dt,'YYYYQ')>='20023' and  
        to_char(service_dt,'YYYYQ')<='20032'  
  group by service_code;
```

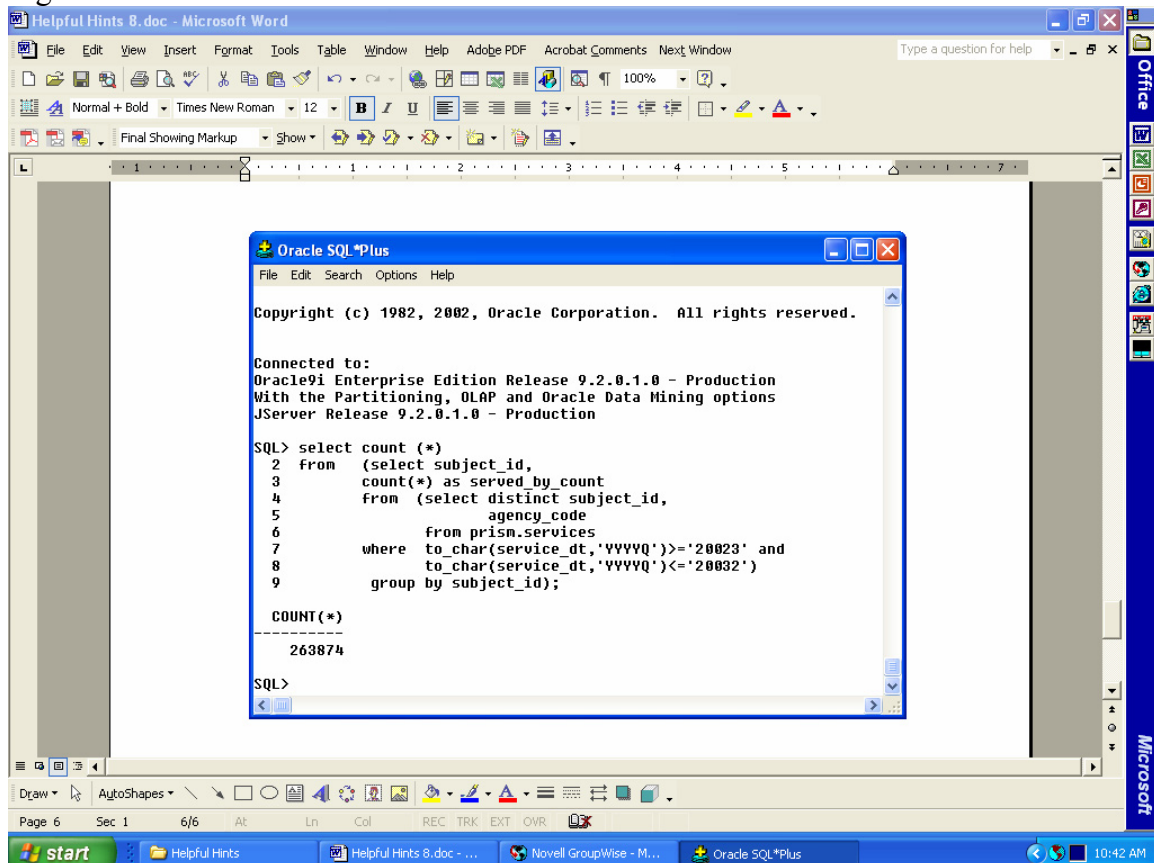
Figure 3



You've been asked for an unduplicated count of customers that received a service during July 1, 2002 through June 30, 2003. To get an unduplicated count paste the following sql statement at the sql prompt (Figure 4).

```
select count (*)
from (select subject_id,
      count(*) as served_by_count
      from (select distinct subject_id,
                    agency_code
            from prism.services
            where to_char(service_dt,'YYYYQ')>='20023' and
                  to_char(service_dt,'YYYYQ')<='20032')
      group by subject_id);
```

Figure 4



Exercise: Using sql, get a count of basic skills development (codes 400 – 460) and education and training (codes 500 – 590) codes for the period of January 1, 2002 through December 31, 2002. Hint – Use the “like” command.