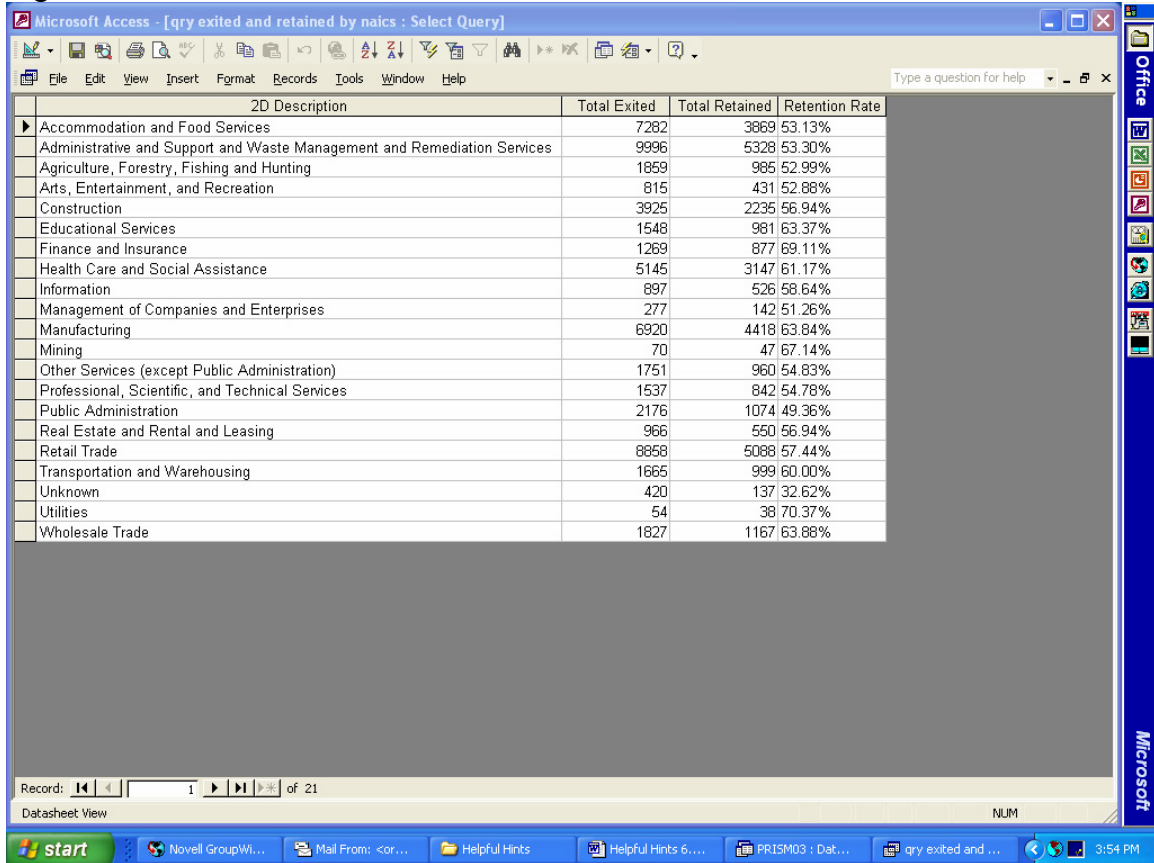


## PRISM – Helpful Hints #6

Helpful Hints #6 uses the software Microsoft Access to produce a query displaying Total Exited and Placed, Total Retained, and Retention Rate by Industry (Figure 1) for customers with outcome dates of 1Q 2003. Before the query can be reproduced on the workstation, ODBC (*Open DataBase Connectivity*) must be installed and properly configured on the computer (see desk manual, page 38).

Figure 1

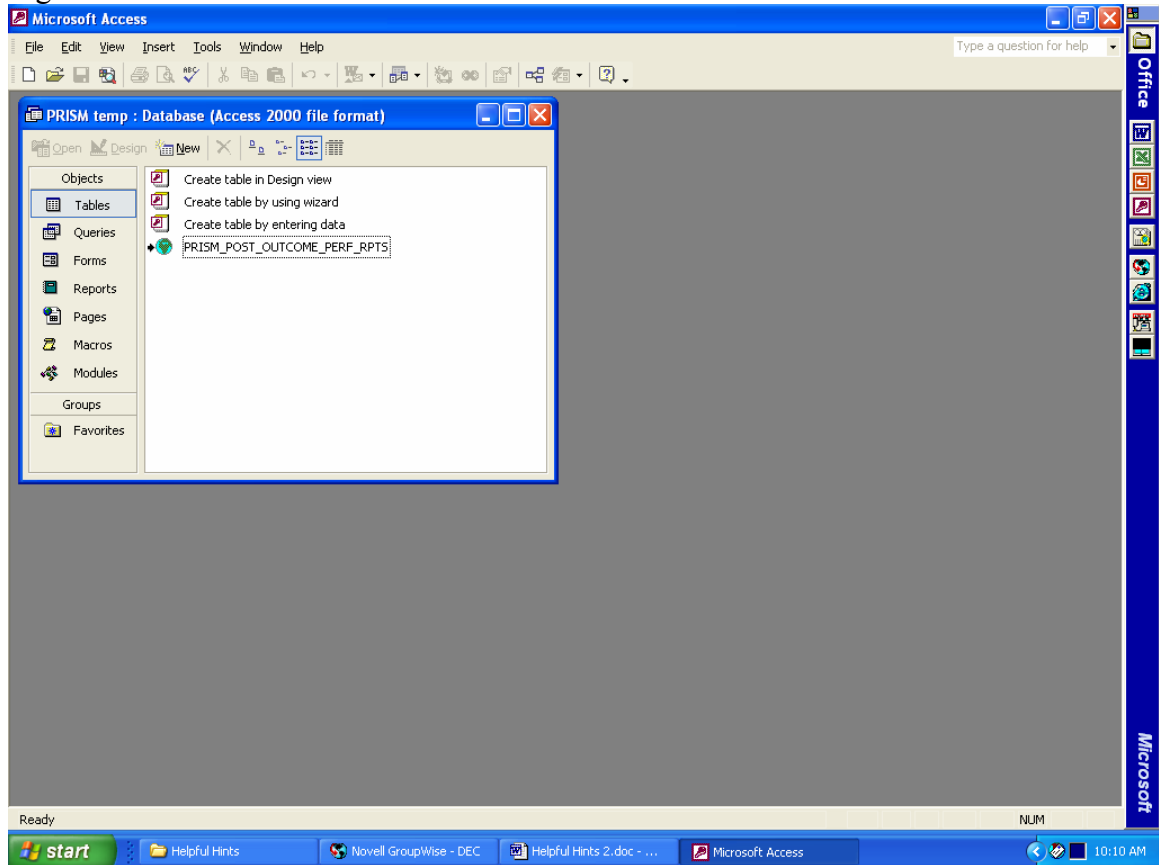


2D Description	Total Exited	Total Retained	Retention Rate
Accommodation and Food Services	7282	3869	53.13%
Administrative and Support and Waste Management and Remediation Services	9996	5328	53.30%
Agriculture, Forestry, Fishing and Hunting	1859	985	52.99%
Arts, Entertainment, and Recreation	815	431	52.88%
Construction	3925	2235	56.94%
Educational Services	1548	981	63.37%
Finance and Insurance	1269	877	69.11%
Health Care and Social Assistance	5145	3147	61.17%
Information	897	526	58.64%
Management of Companies and Enterprises	277	142	51.26%
Manufacturing	6920	4418	63.84%
Mining	70	47	67.14%
Other Services (except Public Administration)	1751	960	54.83%
Professional, Scientific, and Technical Services	1537	842	54.78%
Public Administration	2176	1074	49.36%
Real Estate and Rental and Leasing	966	550	56.94%
Retail Trade	8858	5088	57.44%
Transportation and Warehousing	1665	999	60.00%
Unknown	420	137	32.62%
Utilities	54	38	70.37%
Wholesale Trade	1827	1167	63.88%

## PRISM – Helpful Hints #6

If you don't have the PRISM\_POST\_OUTCOME\_PERF\_RPTS table linked to the database, the next step is to create a link to the PRISM\_POST\_OUTCOME\_PERF\_RPTS table as shown (Figure 2).

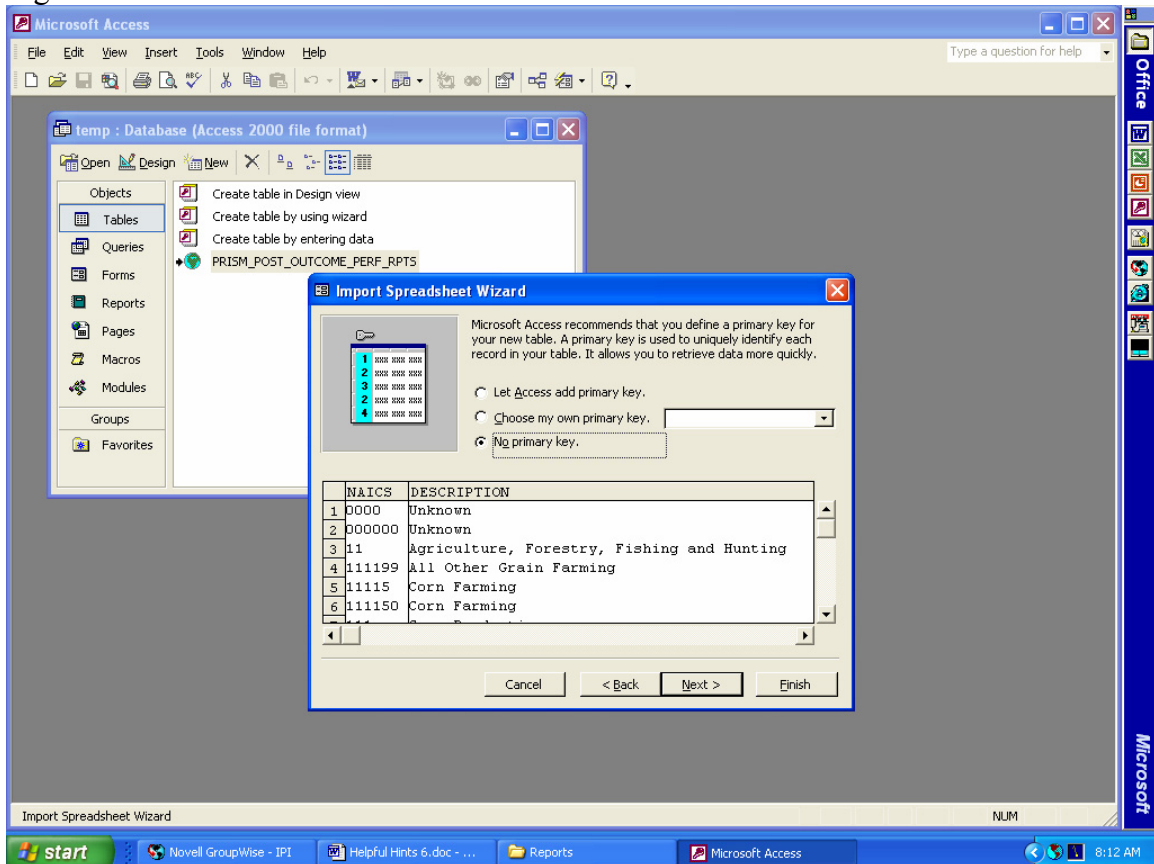
Figure 2



## PRISM – Helpful Hints #6

The next step before you can be designing the query is to import the recodenaics.xls into your database. The file was attached to the Helpful Hints 6 email. To import the file to the database, click on “File” “Get External Data” and “Import” from the menu. Next you will need to locate the directory you placed the file “recodenaics.xls”. Click on the file and up will pop the Import Spreadsheet Wizard. Click “next” and check the box in the “First Row Contains Column Headings” and click “next”. Click “next” again you should be at the window as shown in Figure 3. Click on “No primary key”. Click “next” and then click “Finish”. The table should now be imported into your database.

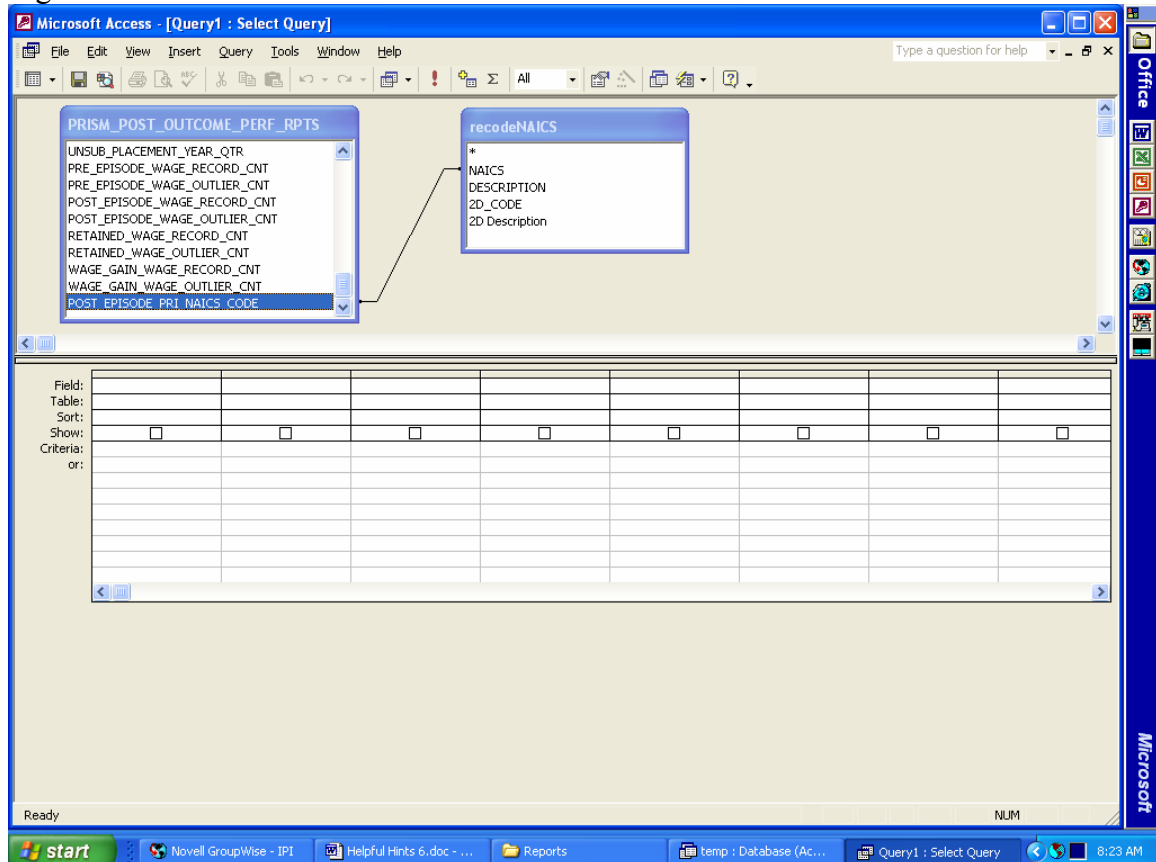
Figure 3



## PRISM – Helpful Hints #6

The next step is to open a new query and add the PRISM\_POST\_OUTCOME\_PERF\_RPTS table and the recodenaics table to the query and link POST\_EPISODE\_PRI\_NAICS\_CODE to the NAICS field (Figure 4).

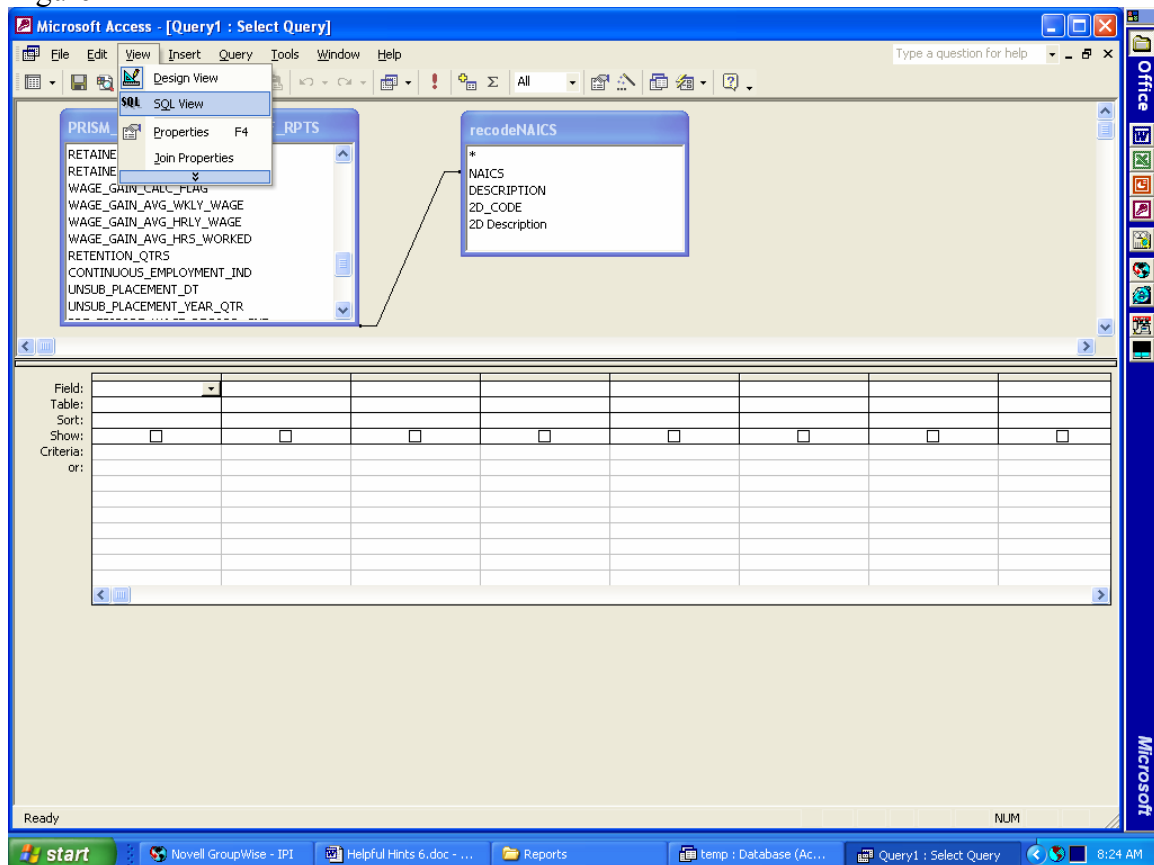
Figure 4



## PRISM – Helpful Hints #6

Open the SQL View by selecting “SQL View” under View on the menu bar (Figure 4).

Figure 4



The following select statement will be displayed.

```
SELECT
FROM PRISM_POST_OUTCOME_PERF_RPTS INNER JOIN recodeNAICS ON
PRISM_POST_OUTCOME_PERF_RPTS.POST_EPISODE_PRI_NAICS_CODE =
recodeNAICS.NAICS;
```

Delete the select statement in the SQL view and copy / paste the following select statement. Run the query and the results will display the Total Exited, Total Retained and Retention Rate by Industry for the time period 1Q 2003 (January 1, 2003 through March 31, 2003).

## PRISM – Helpful Hints #6

### **SQL statement for All Agencies/Programs except CAF**

```
SELECT recodeNAICS.[2D Description],
Sum(If(PRISM_POST_OUTCOME_PERF_RPTS!POST_EPISODE_EMPLOYMENT_CODE>"000",1,0
)) AS [Total Exited],
Sum(If(PRISM_POST_OUTCOME_PERF_RPTS!CONTINUOUS_EMPLOYMENT_IND="1",1,0)) AS
[Total Retained], Format([Total Retained]/[Total Exited],"Percent") AS [Retention Rate]
FROM PRISM_POST_OUTCOME_PERF_RPTS INNER JOIN recodeNAICS ON
PRISM_POST_OUTCOME_PERF_RPTS.POST_EPISODE_PRI_NAICS_CODE =
recodeNAICS.NAICS
WHERE (((PRISM_POST_OUTCOME_PERF_RPTS.OUTCOME_YEAR_QTR)="20031"))
GROUP BY recodeNAICS.[2D Description];
```

### **For CAF Staff Only**

```
SELECT recodeNAICS.[2D Description],
Sum(If(PRISM_POST_OUTCOME_PERF_RPTS!POST_EPISODE_EMPLOYMENT_CODE>"000",1,0
)) AS [Total Exited],
Sum(If(PRISM_POST_OUTCOME_PERF_RPTS!CONTINUOUS_EMPLOYMENT_IND="1",1,0)) AS
[Total Retained], Format([Total Retained]/[Total Exited],"Percent") AS [Retention Rate]
FROM PRISM_POST_OUTCOME_PERF_RPTS INNER JOIN recodeNAICS ON
PRISM_POST_OUTCOME_PERF_RPTS.POST_EPISODE_PRI_NAICS_CODE =
recodeNAICS.NAICS
WHERE (((PRISM_POST_OUTCOME_PERF_RPTS.OUTCOME_YEAR_QTR)="20031")) OR
(((PRISM_POST_OUTCOME_PERF_RPTS.UNSUB_PLACEMENT_YEAR_QTR)="20031"))
GROUP BY recodeNAICS.[2D Description];
```

Save the query. Retention data can be displayed within the query for any time period by changing the date in the OUTCOME\_YEAR\_QTR date field and UNSUB\_PLACEMENT\_YEAR\_QTR.