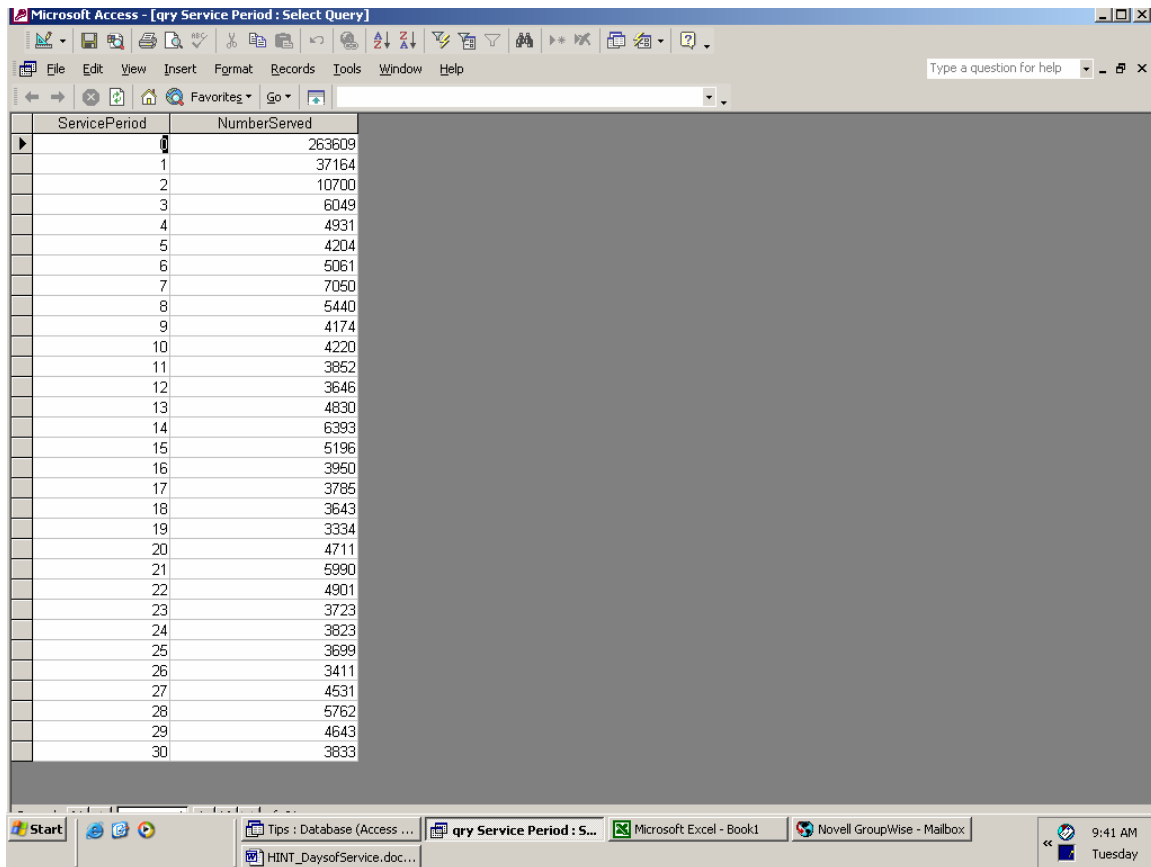


Exercise: What is the service period (timeframe from Intake to Outcome) for your agency's clientele? How many participants had between 0-30 days of service?

Microsoft Access was used to produce the query displaying the number of days of service and the count of people receiving that period of service. (Figure 1)

Figure 1



The screenshot shows a Microsoft Access window titled "Microsoft Access - [qry Service Period : Select Query]". The window displays a table with two columns: "ServicePeriod" and "NumberServed". The data is as follows:

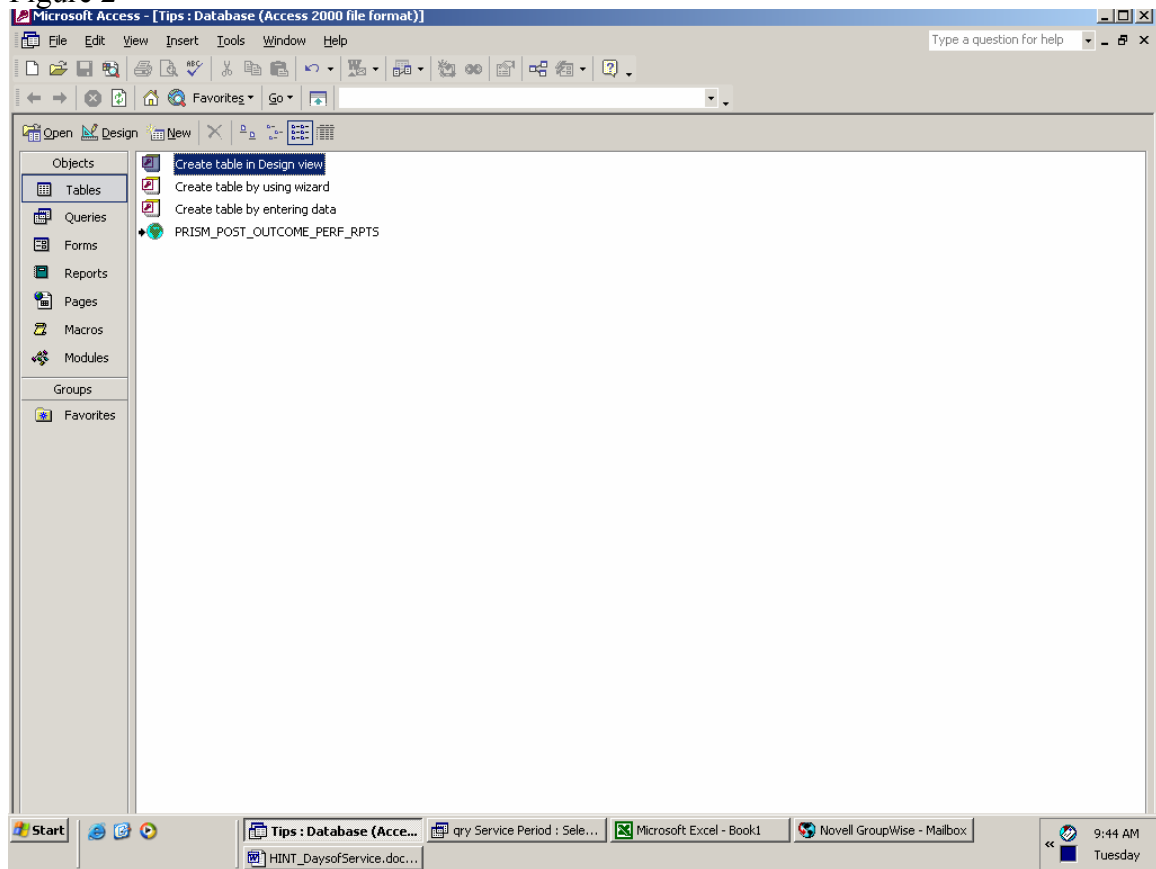
ServicePeriod	NumberServed
0	263609
1	37164
2	10700
3	6049
4	4931
5	4204
6	5061
7	7050
8	5440
9	4174
10	4220
11	3852
12	3646
13	4830
14	6393
15	5196
16	3950
17	3785
18	3643
19	3334
20	4711
21	5990
22	4901
23	3723
24	3823
25	3699
26	3411
27	4531
28	5762
29	4643
30	3833

For the purposes of this exercise the time period selected is one quarter (1/1/2001 through 3/31/2001). The service period selected was between 0 and 30 days.

Before the query can be reproduced on the workstation, ODBC (Open DataBase Connectivity) must be installed and properly configured on the computer in order to connect to the PRISM database. See page 38 of the Desk Manual <http://prism.state.or.us/downloads/PRISMPartnerDeskManual.pdf>. Microsoft Access ODBC configuration is required only once for each workstation.

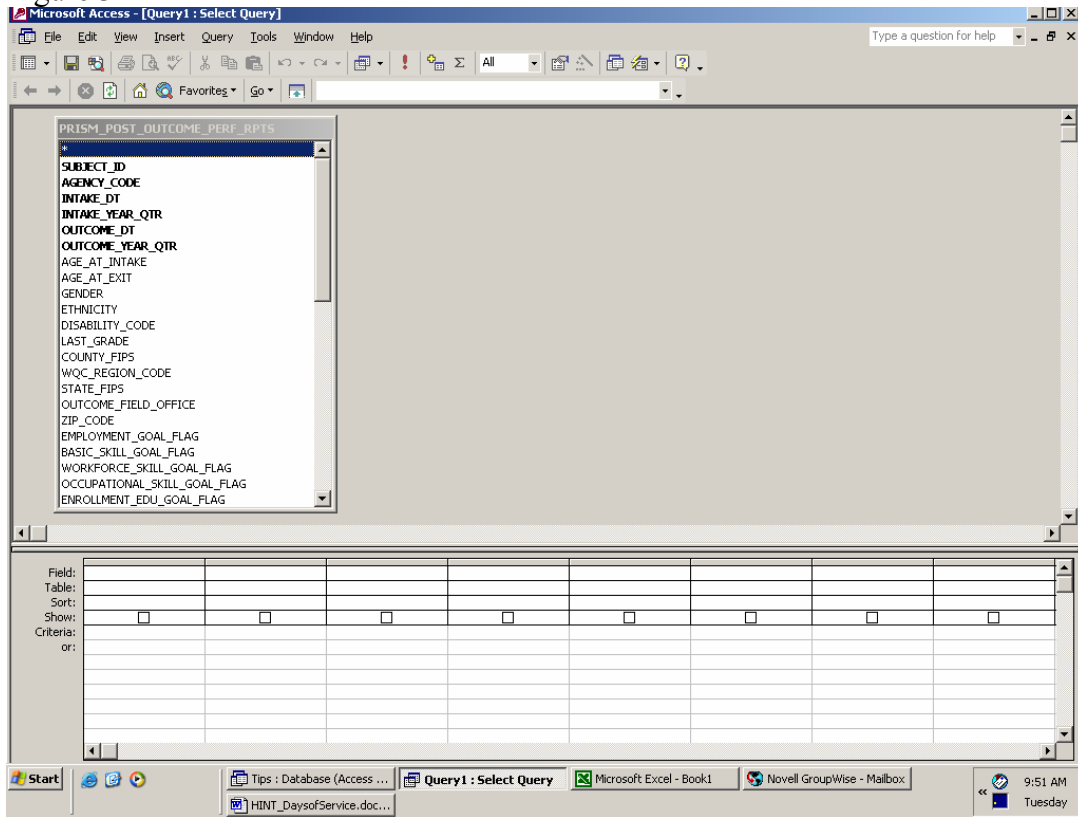
After ODBC has been installed and properly configured on the workstation, create a link to the PRISM.POST_OUTCOME_PERF_RPTS table as shown in figure 2.

Figure 2



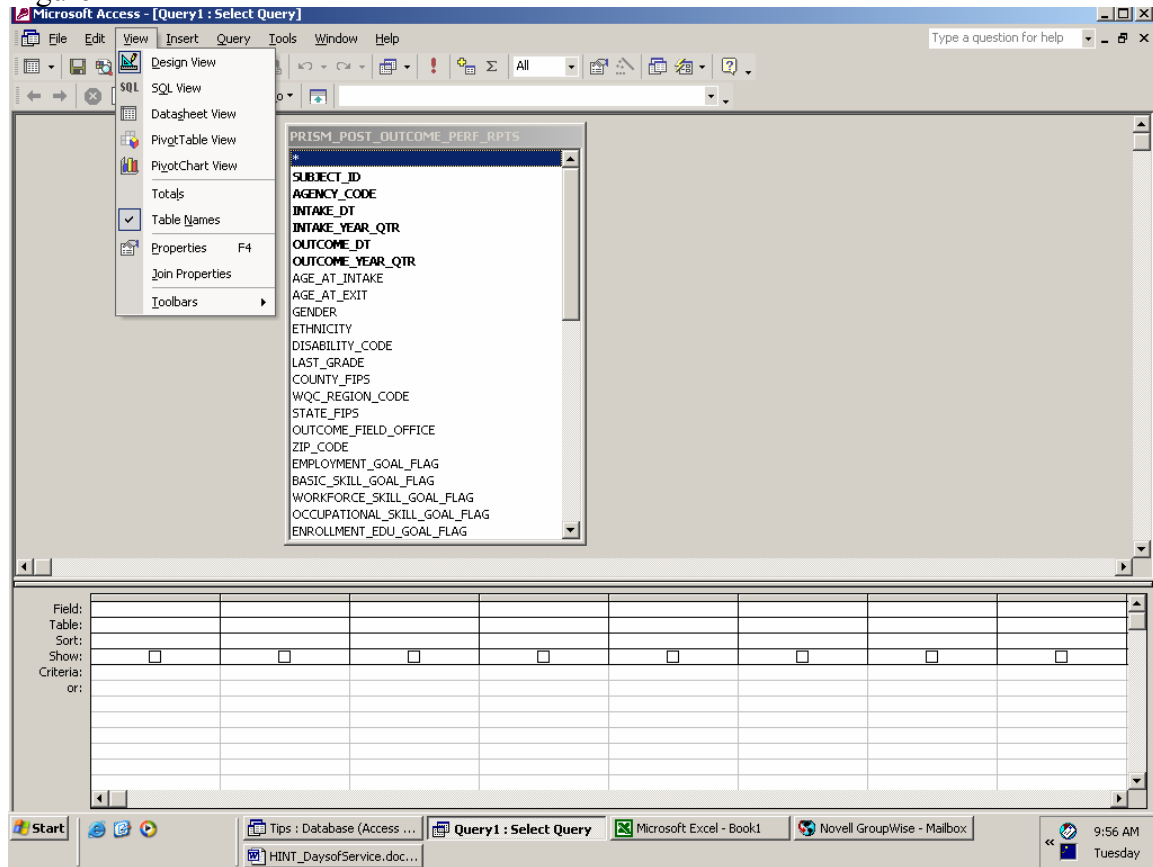
Open a new query and add the PRISM_POST_OUTCOME_PERF_REPORT table to the query (figure 3)

Figure 3



Open the SQL View by selecting “SQL View” under View on the menu bar (figure 4):

Figure 4



DELETE any SQL code that is currently in the window and PASTE in the following Select Statement:

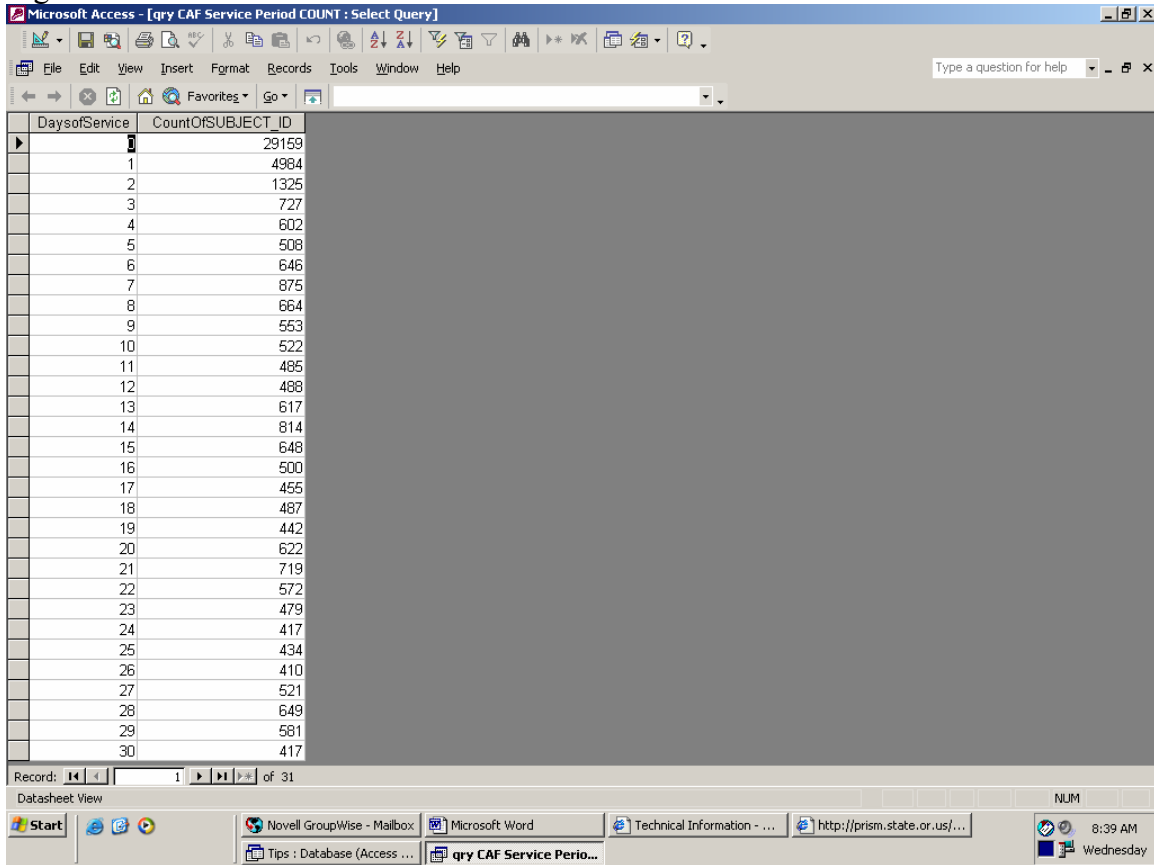
SQL STATEMENT FOR ALL AGENCIES EXCEPT CAF

```
SELECT
DateDiff("d",PRISM_POST_OUTCOME_PERF_RPTS!INTAKE_DT,PRISM_POST_OUTCOME_PERF
_RPTS!OUTCOME_DT) AS ServicePeriod,
Count(PRISM_POST_OUTCOME_PERF_RPTS.SUBJECT_ID) AS NumberServed
FROM PRISM_POST_OUTCOME_PERF_RPTS
WHERE (((PRISM_POST_OUTCOME_PERF_RPTS.OUTCOME_DT) Between #1/1/2001# And
#3/31/2003#))
GROUP BY
DateDiff("d",PRISM_POST_OUTCOME_PERF_RPTS!INTAKE_DT,PRISM_POST_OUTCOME_PERF
_RPTS!OUTCOME_DT)
HAVING
(((DateDiff("d",PRISM_POST_OUTCOME_PERF_RPTS!INTAKE_DT,PRISM_POST_OUTCOME_PE
RF_RPTS!OUTCOME_DT)) Between 0 And 30));
```

SQL STATEMENT FOR CAF ONLY

Using the parameters -- service period between 0 and 30 days, Outcome Date or Unsubsidized Placement Date between 1/1/2001 and 3/31/2001 – create a two-step process to achieve the count of served by service period. See figure 5 for example.

Figure 5



1) Create a query which establishes the end point of the service period -- Select Date -- and creates a table.

The [Select Date] – the end point of the service period -- is determined like this:

Outcome Date	Unsubsidized Placement Date	Select Date
x	x	Unsubsidized Placement Date
	x	Unsubsidized Placement Date
x		Outcome Date

```
SELECT DateDiff("d",[INTAKE_DT],[SelectDt]) AS DaysofService,
Iif([OUTCOME_DT] Is Null And [UNSUB_PLACEMENT_DT] Is Not
Null,[UNSUB_PLACEMENT_DT],Iif([OUTCOME_DT] Is Not Null And
[UNSUB_PLACEMENT_DT] Is Not
Null,[UNSUB_PLACEMENT_DT],Iif([OUTCOME_DT] Is Not Null And
[UNSUB_PLACEMENT_DT] Is Null,[OUTCOME_DT]))) AS SelectDt,
PRISM_POST_OUTCOME_PERF_RPTS.SUBJECT_ID INTO [tbl CAF SelectDt]
FROM PRISM_POST_OUTCOME_PERF_RPTS
WHERE (((PRISM_POST_OUTCOME_PERF_RPTS.UNSUB_PLACEMENT_DT)
Between #1/1/2001# And #3/31/2001#)) OR
(((PRISM_POST_OUTCOME_PERF_RPTS.OUTCOME_DT) Between #1/1/2001#
And #3/31/2001#));
```

2) Query the Select Date table for a count of served for each service period.

```
SELECT [tbl CAF SelectDt].DaysofService, Count([tbl CAF SelectDt].SUBJECT_ID)
AS CountOfSUBJECT_ID
FROM [tbl CAF SelectDt]
GROUP BY [tbl CAF SelectDt].DaysofService
HAVING ((([tbl CAF SelectDt].DaysofService) Between 0 And 30));
```

For the purposes of this exercise the time period selected is one quarter (1/1/2001 through 3/31/2001). The service period selected is between 0 and 30 days. These parameters can be changed to different date ranges and service periods.