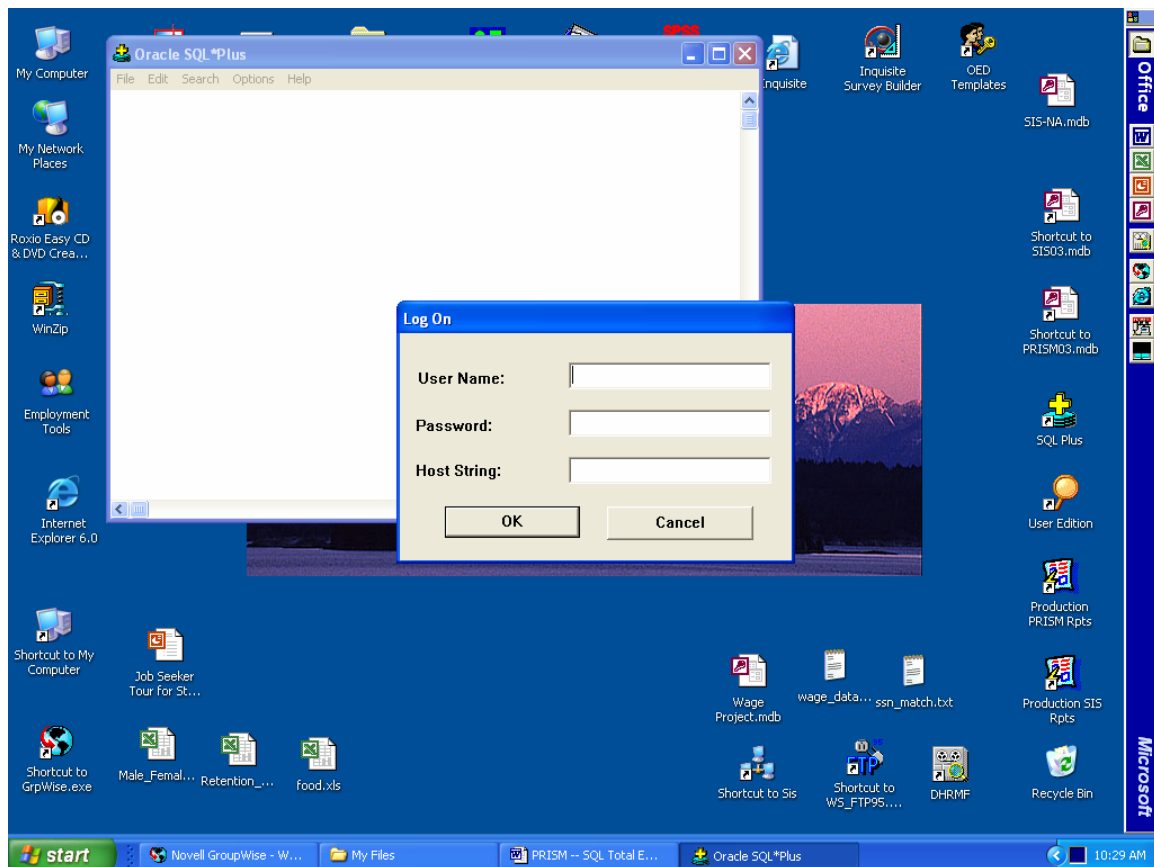


PRISM – Helpful Hints - #1

Sometimes you may want a count for your agency/program by workforce region for Total Exited and Total Employed. Using SQL*Plus, the following sql statements, when pasted at the sql prompt, will provide a count by workforce region of the Total Exited and Total Placed for Q3 2003.

Step 1 – Log on to SQL*Plus by entering your user name, password, and host string. More information about SQL*Plus is available in the Desk Manual, beginning on page 40.



PRISM – Helpful Hints - #1

Step 2 – Paste the following sql statement at the sql prompt to get a count by workforce region for “Total Exited” for your agency/program.

For all agencies/programs except CAF

* The following sql statement gives a count of “total exited”

* on the Placement Report for Q3 2003.

```
SELECT WQC_REGION_CODE, COUNT(AGENCY_CODE) AS Count_of_Exited
FROM PRISM.POST_OUTCOME_PERF_RPTS
WHERE OUTCOME_YEAR_QTR='20033' AND
      EMPLOYMENT_GOAL_FLAG='1'
GROUP BY WQC_REGION_CODE;
```

The following is for the staff of CAF.

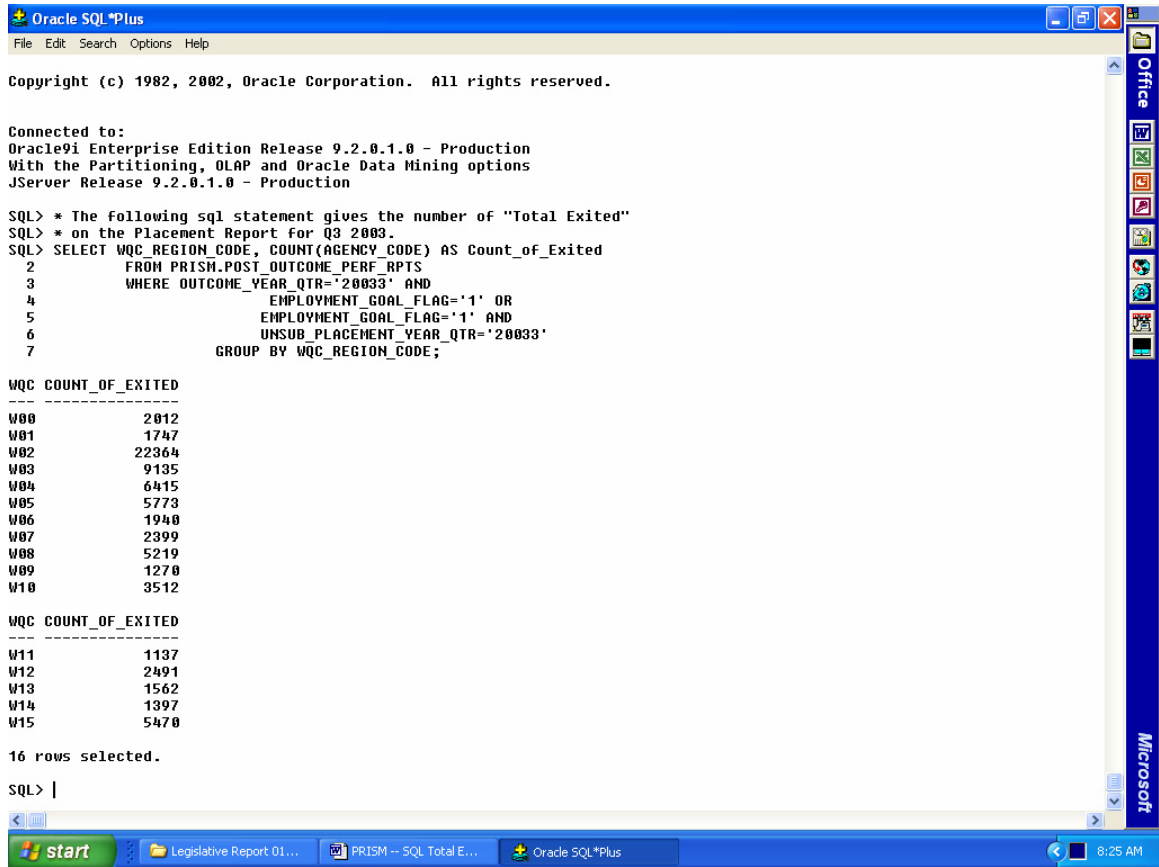
* The following sql statement gives a count of “total exited”

* on the Placement Report for Q3 2003.

```
SELECT WQC_REGION_CODE, COUNT(AGENCY_CODE) AS Count_of_Exited
FROM PRISM.POST_OUTCOME_PERF_RPTS
WHERE OUTCOME_YEAR_QTR='20033' AND
      EMPLOYMENT_GOAL_FLAG='1' OR
      EMPLOYMENT_GOAL_FLAG='1' AND
      UNSUB_PLACEMENT_YEAR_QTR='20033'
GROUP BY WQC_REGION_CODE;
```

The result is a count of Total Exited by workforce region, similar to the results below, but for your agency/program data. If you proceeded to run a Oracle Runtime Placement Report for your agency/program, for the same time period, you will get the same results under the “Total Exited” column on the report.

PRISM – Helpful Hints - #1



The screenshot shows the Oracle SQL*Plus interface. The title bar reads "Oracle SQL*Plus". The menu bar includes "File", "Edit", "Search", "Options", and "Help". The main window displays the following text:

```
Copyright (c) 1982, 2002, Oracle Corporation. All rights reserved.

Connected to:
Oracle9i Enterprise Edition Release 9.2.0.1.0 - Production
With the Partitioning, OLAP and Oracle Data Mining options
JServer Release 9.2.0.1.0 - Production

SQL> * The following sql statement gives the number of "Total Exited"
SQL> * on the Placement Report for Q3 2003.
SQL> SELECT WQC_REGION_CODE, COUNT(AGENCY_CODE) AS Count_of_Exitd
2      FROM PRISM.POST_OUTCOME_PERF_RPTS
3      WHERE OUTCOME_YEAR_QTR='20033' AND
4            EMPLOYMENT_GOAL_FLAG='1' OR
5            EMPLOYMENT_GOAL_FLAG='1' AND
6            UNSUB_PLACEMENT_YEAR_QTR='20033'
7      GROUP BY WQC_REGION_CODE;
```

WQC	COUNT_OF_EXITED
W00	2012
W01	1747
W02	22364
W03	9135
W04	6415
W05	5773
W06	1940
W07	2399
W08	5219
W09	1270
W10	3512

WQC	COUNT_OF_EXITED
W11	1137
W12	2491
W13	1562
W14	1397
W15	5470

16 rows selected.

```
SQL> |
```

The taskbar at the bottom shows the Windows Start button, several open applications including "Legislative Report 01...", "PRISM - SQL Total E...", and "Oracle SQL*Plus", and the system clock showing "8:25 AM".

Suppose you want a count for a different time period than the one above. Let's say you want a count of total exited for the time period of July 1, 2002 through June 30, 2003 (20023 through 20032). To get a count by workforce region for that time period for your agency, paste the following statement at the sql prompt.

For all agencies/programs except CAF

* The following sql statement gives a count by workforce region of total exited on the *Placement Report for July 1, 2002 through June 30, 2003.

```
SELECT WQC_REGION_CODE, COUNT(AGENCY_CODE) AS Count_of_Exited
FROM PRISM.POST_OUTCOME_PERF_RPTS
WHERE OUTCOME_YEAR_QTR>='20023' AND
      OUTCOME_YEAR_QTR<='20032' AND
      EMPLOYMENT_GOAL_FLAG='1'
GROUP BY WQC_REGION_CODE;
```

The following is for the staff of CAF.

* The following sql statement gives a count by workforce region of total exited on the *Placement Report for July 1, 2002 through June 30, 2003.

```
SELECT WQC_REGION_CODE, COUNT(AGENCY_CODE) AS Count_of_Exited
FROM PRISM.POST_OUTCOME_PERF_RPTS
WHERE OUTCOME_YEAR_QTR>='20023' AND
      OUTCOME_YEAR_QTR<='20032' AND
      EMPLOYMENT_GOAL_FLAG='1' OR
      UNSUB_PLACEMENT_YEAR_QTR>='20023' AND
      UNSUB_PLACEMENT_YEAR_QTR<='20032' AND
      EMPLOYMENT_GOAL_FLAG='1'
GROUP BY WQC_REGION_CODE;
```

Step 3 – Paste the following statement at the sql prompt to get a count by workforce region for “Total Employed” for your agency/program.

For all agencies/programs except CAF

*The following sql statement provides a count by workforce region

* of “Total Employed” on the Placement Report for Q3 2003.

```
SELECT WQC_REGION_CODE, COUNT(AGENCY_CODE) AS Count_of_Employed
FROM PRISM.POST_OUTCOME_PERF_RPTS
WHERE OUTCOME_YEAR_QTR='20033' AND
      EMPLOYMENT_GOAL_FLAG='1' AND
      POST_EPISODE_EMPLOYMENT_CODE>'000'
GROUP BY WQC_REGION_CODE;
```

The following is for the staff of CAF.

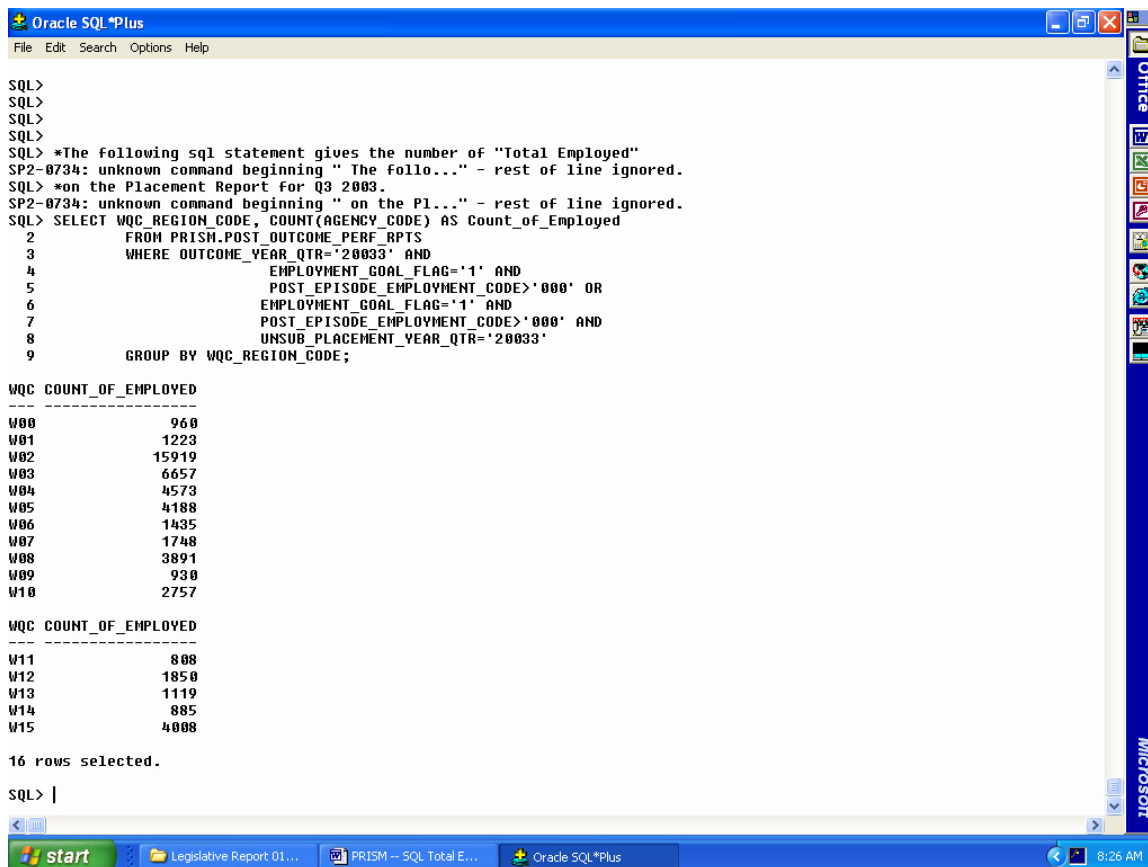
*The following sql statement provides a count by workforce region

* of “Total Employed” on the Placement Report for Q3 2003.

```
SELECT WQC_REGION_CODE, COUNT(AGENCY_CODE) AS Count_of_Employed
FROM PRISM.POST_OUTCOME_PERF_RPTS
WHERE OUTCOME_YEAR_QTR='20033' AND
      EMPLOYMENT_GOAL_FLAG='1' AND
      POST_EPISODE_EMPLOYMENT_CODE>'000' OR
      EMPLOYMENT_GOAL_FLAG='1' AND
      POST_EPISODE_EMPLOYMENT_CODE>'000' AND
      UNSUB_PLACEMENT_YEAR_QTR='20033'
GROUP BY WQC_REGION_CODE;
```

PRISM – Helpful Hints - #1

The results is a count of Total Employed by workforce, similar to the results below, but for your agency/program data. If you proceeded to run a Oracle Runtime Placement Report for your agency/program, for the same time period, you will get the same results under the “Total Employed” column on the report.



```
Oracle SQL*Plus
File Edit Search Options Help

SQL>
SQL>
SQL>
SQL>
SQL> *The following sql statement gives the number of "Total Employed"
SP2-0734: unknown command beginning " The follo..." - rest of line ignored.
SQL> *on the Placement Report for Q3 2003.
SP2-0734: unknown command beginning " on the Pl..." - rest of line ignored.
SQL> SELECT WQC_REGION_CODE, COUNT(AGENCY_CODE) AS Count_of_Employed
2 FROM PRISM.POST_OUTCOME_PERF_RPTS
3 WHERE OUTCOME_YEAR_QTR='20033' AND
4 EMPLOYMENT_GOAL_FLAG='1' AND
5 POST_EPISODE_EMPLOYMENT_CODE>'000' OR
6 EMPLOYMENT_GOAL_FLAG='1' AND
7 POST_EPISODE_EMPLOYMENT_CODE>'000' AND
8 UNSUB_PLACEMENT_YEAR_QTR='20033'
9 GROUP BY WQC_REGION_CODE;

WQC COUNT_OF_EMPLOYED
-----
W00          960
W01         1223
W02         15919
W03          6657
W04          4573
W05          4188
W06          1435
W07          1748
W08          3891
W09           930
W10          2757

WQC COUNT_OF_EMPLOYED
-----
W11           808
W12          1850
W13          1119
W14           885
W15          4008

16 rows selected.

SQL> |
```

Suppose you want a count of total employed for your agency/program for the time period of July 1, 2002 through June 30, 2003 (20023 through 20032). To get a count by workforce region for that time period for your agency/program, paste the following statement at the sql prompt.

For all agencies/programs except CAF

* The following sql statement gives a count of “Total Employed”

* on the Placement Report for July 1, 2002 through June 30, 2003.

```
SELECT WQC_REGION_CODE, COUNT(AGENCY_CODE) AS Count_of_Employed
FROM PRISM.POST_OUTCOME_PERF_RPTS
WHERE OUTCOME_YEAR_QTR>='20023' AND
      OUTCOME_YEAR_QTR<='20032' AND
      EMPLOYMENT_GOAL_FLAG='1' AND
      POST_EPISODE_EMPLOYMENT_CODE>'000'
GROUP BY WQC_REGION_CODE;
```

PRISM – Helpful Hints - #1

The following is for the staff of CAF.

* The following sql statement gives a count of “Total Employed”

* on the Placement Report for July 1, 2002 through June 30, 2003.

```
SELECT WQC_REGION_CODE, COUNT(AGENCY_CODE) AS Count_of_Employed
FROM PRISM.POST_OUTCOME_PERF_RPTS
WHERE OUTCOME_YEAR_QTR>='20023' AND
      OUTCOME_YEAR_QTR<='20032' AND
      EMPLOYMENT_GOAL_FLAG='1' AND
      POST_EPISODE_EMPLOYMENT_CODE>'000' OR
      EMPLOYMENT_GOAL_FLAG='1' AND
      POST_EPISODE_EMPLOYMENT_CODE>'000' AND
      UNSUB_PLACEMENT_YEAR_QTR>='20023' AND
      UNSUB_PLACEMENT_YEAR_QTR<='20032'
GROUP BY WQC_REGION_CODE;
```