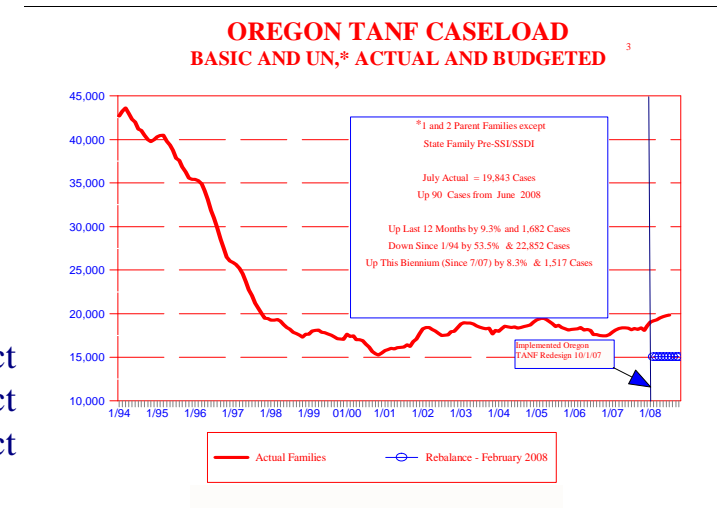
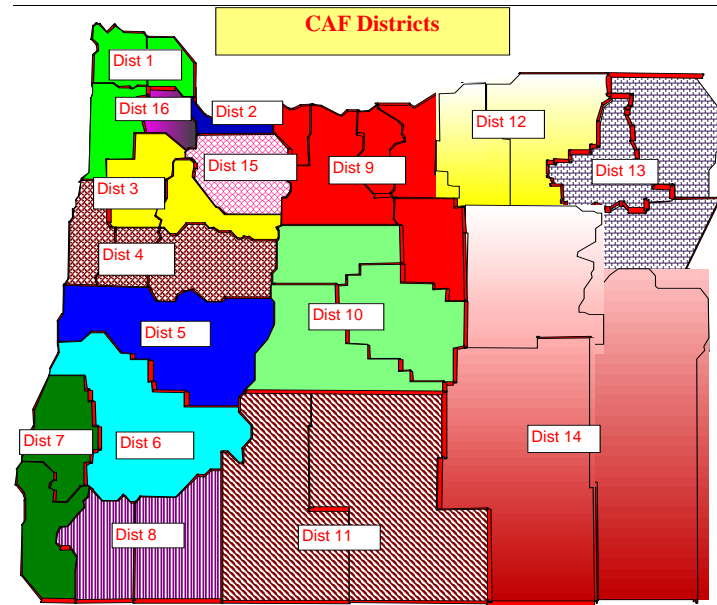


OREGON CHILDREN, ADULTS AND FAMILIES DATA CHARTS - JULY 2008

<u>Page</u>	<u>Description</u>
2	County Profiles by District
3	TANF Combined Caseload
4	State Family Pre-SSI/SSDI Caseload
5	Job Placements
6	TANF Basic - Actual and Budgeted
7	TANF UN - Actual and Budgeted
8	TANF Combined Change by District
9	TANF Percent Change since 10/07 by District
10	TANF Monthly Intake by Type of Action
11	Percent of Statewide TANF Totals by District
12	Oregon Food Stamp Households
13	Oregon FS Households Monthly Comparison
14	Oregon FS Households Percent Monthly Change
15	Oregon FS Participants
16	Oregon FS Participants Two Year Comparison
17	Employment Related Day Care Cases
18	Children in Substitute Care by Branch
19	Children in Substitute Care by District
20	Percent ADP Change by District
21	Yearly Percent ADP Change by District
22	Child Welfare Over Past Eight Years Statewide
23	Total Foster Care Over Past Eleven Years by District
24	Total Foster Care Over Past Eleven Years by District
25	Total Foster Care Over Past Eleven Years by District
26	Median Months to Adoption by Branch



COUNTY PROFILES by DISTRICT

DISTRICT	COUNTY	POPULATION ¹	POPULATION UNDER AGE 18 ²	% OF POP. UNDER AGE 18	% of POP. OVER AGE 65 ²	UNEMP. RATE ⁴ JULY 2008	POVERTY RATE ⁵	PER CAPITA INCOME ³	HIGH SCHOOL GRAD RATE ³	COLLEGE DEGREE RATE ³	MARRIED COUPLES W/CHILDREN ³
1	Columbia	47,565	11,852	24.9%	12.2%	6.3%	9.5%	\$20,078	85.6%	14.0%	25.8%
	Clatsop	37,440	8,019	21.4%	15.1%	4.5%	13.0%	\$19,515	85.6%	19.1%	19.5%
	Tillamook	25,845	5,058	19.6%	20.3%	4.7%	12.9%	\$19,052	84.1%	17.6%	17.5%
2	Multnomah	710,025	157,184	22.1%	9.9%	5.3%	14.2%	\$22,606	85.6%	30.7%	17.9%
3	Marion	311,070	81,790	26.3%	11.5%	5.9%	15.1%	\$18,408	79.3%	19.8%	24.7%
	Polk	67,505	15,343	22.7%	14.1%	5.4%	11.3%	\$19,282	85.5%	25.3%	24.0%
	Yamhill	93,085	22,263	23.9%	11.0%	6.1%	11.2%	\$18,951	82.8%	20.6%	28.2%
4	Linn	109,320	27,113	24.8%	14.5%	7.0%	13.7%	\$17,633	81.9%	13.4%	23.0%
	Benton	85,300	15,630	18.3%	10.3%	4.4%	12.5%	\$21,868	93.1%	47.4%	22.2%
	Lincoln	44,630	8,572	19.2%	19.7%	5.7%	15.3%	\$18,692	84.9%	20.8%	15.3%
5	Lane	343,140	71,361	20.8%	13.4%	6.2%	14.9%	\$19,681	87.5%	25.5%	19.6%
6	Douglas	104,675	22,619	21.6%	18.4%	8.6%	15.0%	\$16,581	81.0%	13.3%	20.5%
7	Coos	63,050	12,820	20.3%	19.3%	7.2%	16.0%	\$17,547	81.6%	15.0%	17.7%
	Curry	21,475	3,704	17.2%	28.5%	6.6%	13.0%	\$18,138	81.7%	16.4%	14.5%
8	Jackson	202,310	45,605	22.5%	15.5%	7.0%	14.0%	\$19,498	85.0%	22.3%	21.0%
	Josephine	82,390	17,320	21.0%	19.7%	8.0%	16.1%	\$17,234	81.8%	14.1%	18.2%
9	Hood River	21,470	5,715	26.6%	12.1%	5.2%	13.0%	\$17,877	78.2%	23.1%	27.8%
	Gilliam	1,885	401	21.3%	20.8%	4.1%	9.7%	\$17,659	89.3%	13.4%	22.5%
	Wheeler	1,570	315	20.1%	27.6%	4.6%	13.3%	\$15,884	79.4%	14.3%	17.5%
	Wasco	24,125	5,894	24.4%	16.1%	3.9%	14.1%	\$17,195	82.1%	15.7%	21.1%
	Sherman	1,855	400	21.6%	21.4%	5.4%	14.4%	\$17,448	84.3%	19.0%	23.8%
10	Deschutes	160,810	35,666	22.2%	13.1%	6.2%	10.7%	\$21,767	88.4%	25.0%	23.7%
	Jefferson	22,030	6,284	28.5%	13.9%	8.0%	15.2%	\$15,675	76.5%	13.7%	25.0%
	Crook	25,885	6,454	24.9%	14.9%	8.0%	12.5%	\$16,899	80.5%	12.6%	24.3%
11	Klamath	65,815	16,094	24.5%	14.9%	7.4%	16.6%	\$16,719	81.5%	15.9%	20.7%
	Lake	7,565	1,724	22.8%	18.7%	6.3%	15.9%	\$16,136	79.6%	15.5%	21.2%
12	Umatilla	72,245	18,639	25.8%	12.7%	6.1%	14.9%	\$16,410	77.8%	16.0%	24.8%
	Morrow	12,335	3,465	28.1%	10.8%	5.3%	13.7%	\$15,802	74.1%	11.0%	28.9%
13	Baker	16,435	3,428	20.9%	20.1%	5.7%	15.2%	\$15,612	80.3%	16.4%	20.1%
	Union	25,250	5,838	23.1%	15.0%	7.8%	13.8%	\$16,907	85.6%	21.8%	22.0%
	Wallowa	7,130	1,450	20.3%	20.3%	4.8%	12.6%	\$17,276	87.5%	20.3%	21.5%
14	Malheur	31,620	8,136	25.7%	13.4%	6.5%	19.5%	\$13,895	71.0%	11.1%	26.6%
	Harney	7,680	1,778	23.2%	17.0%	9.4%	14.1%	\$16,159	81.2%	11.9%	22.7%
	Grant	7,580	1,686	22.2%	17.8%	6.9%	13.0%	\$16,794	84.6%	15.7%	22.2%
15	Clackamas	372,270	90,182	24.2%	11.1%	5.1%	9.0%	\$25,973	88.9%	28.4%	26.5%
16	Washington	511,075	137,742	27.0%	8.8%	4.8%	9.3%	\$24,969	88.9%	34.5%	27.6%

¹ Population data is the 2007 estimate from the Center for Population Research and Census at Portland State University.

² Persons under age 18 and over age 65 are estimates from the Center for Population Research and Census at PSU adjusted to the estimated population for 2007.

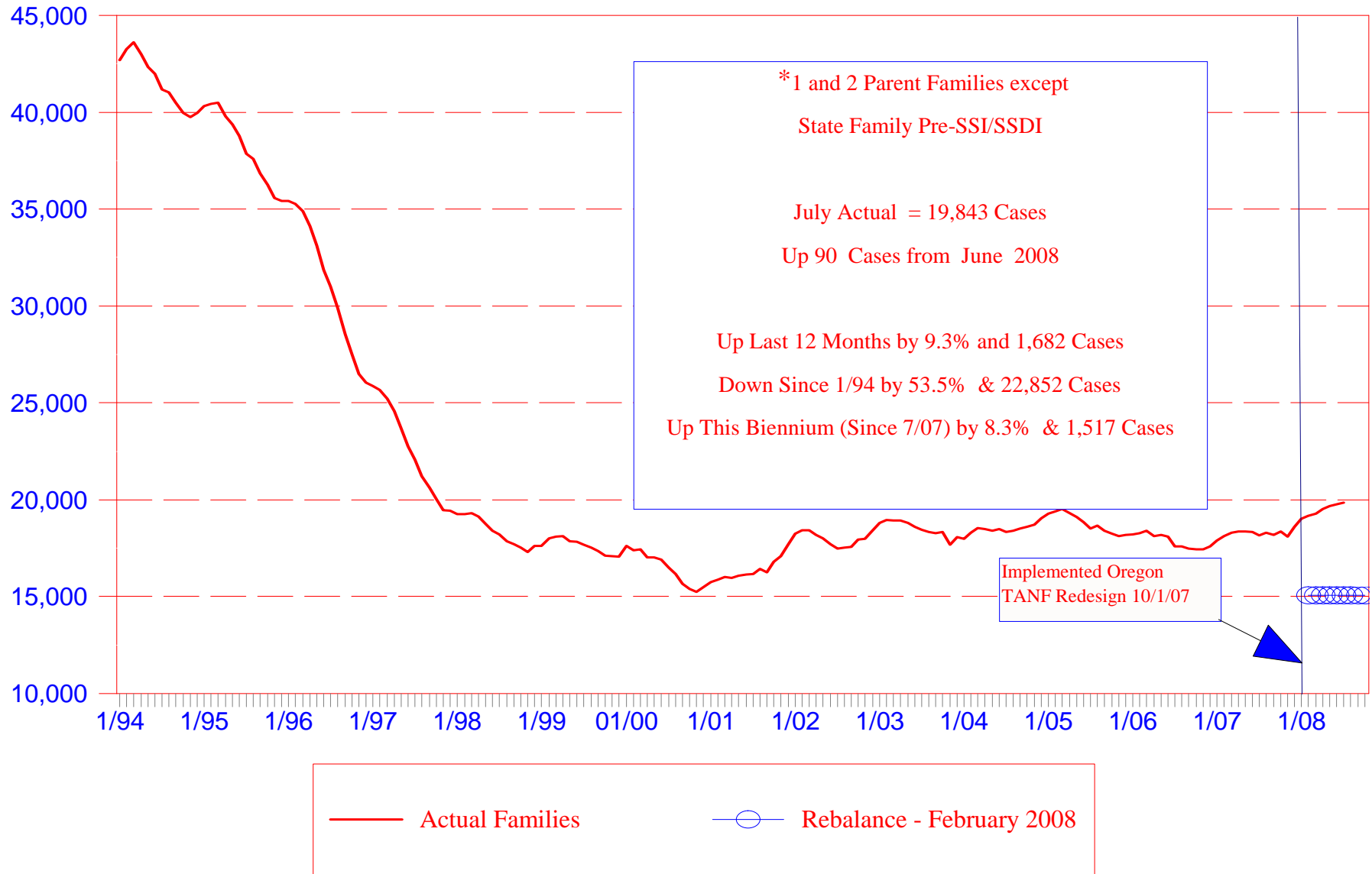
³ Data is from the U.S. Census Bureau, Census 2000

⁴ Unemployment rates are based upon data from the Oregon Employment Department. The rates are not seasonally adjusted.

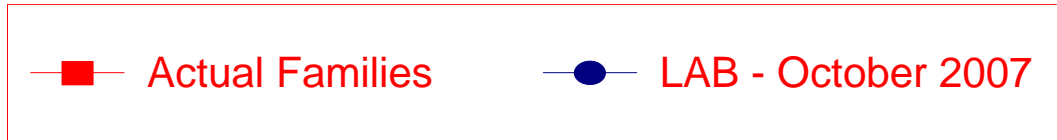
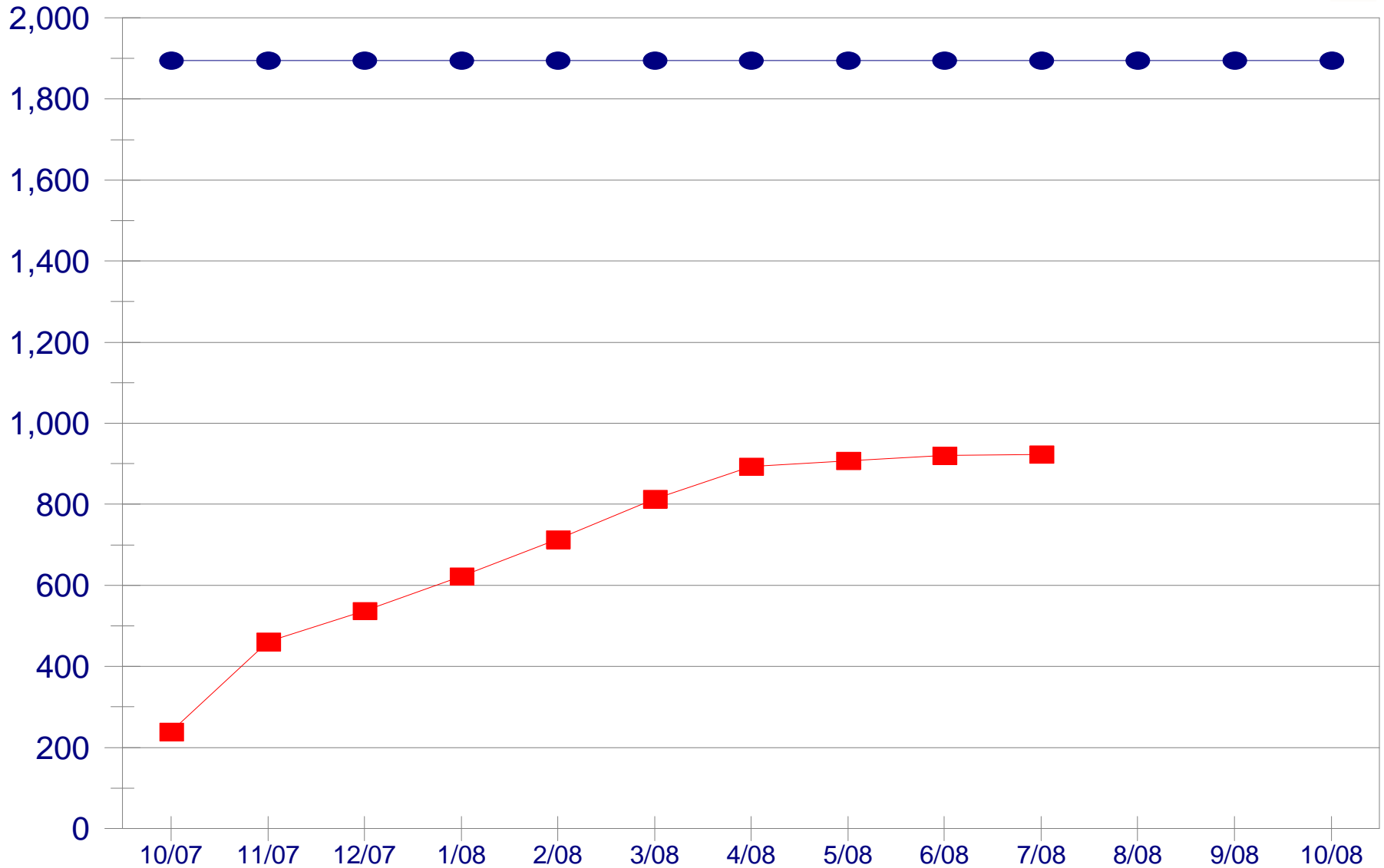
⁵ Poverty rates are 2004 estimates from the US Census Bureau.

OREGON TANF CASELOAD

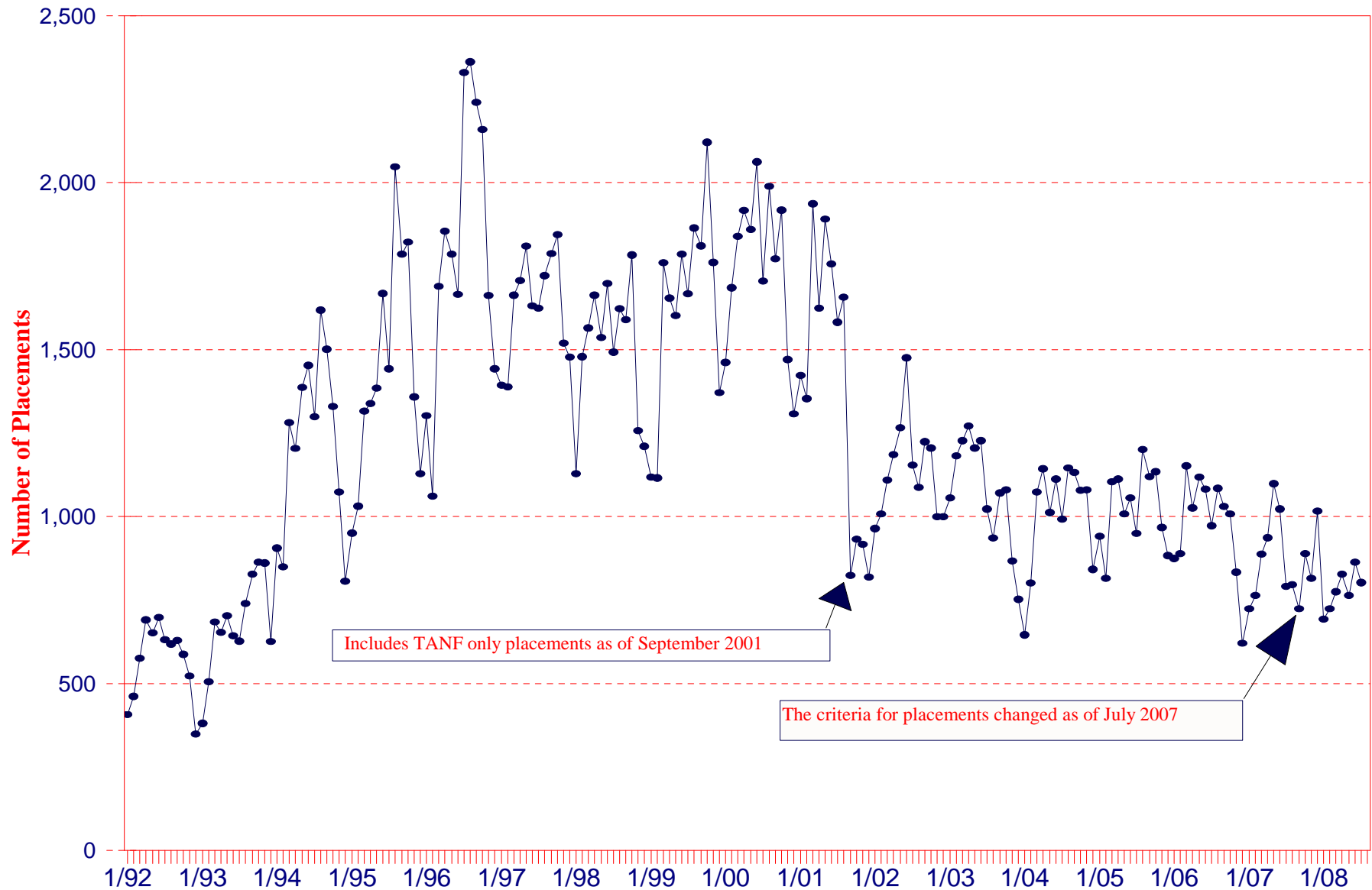
BASIC AND UN,* ACTUAL AND BUDGETED



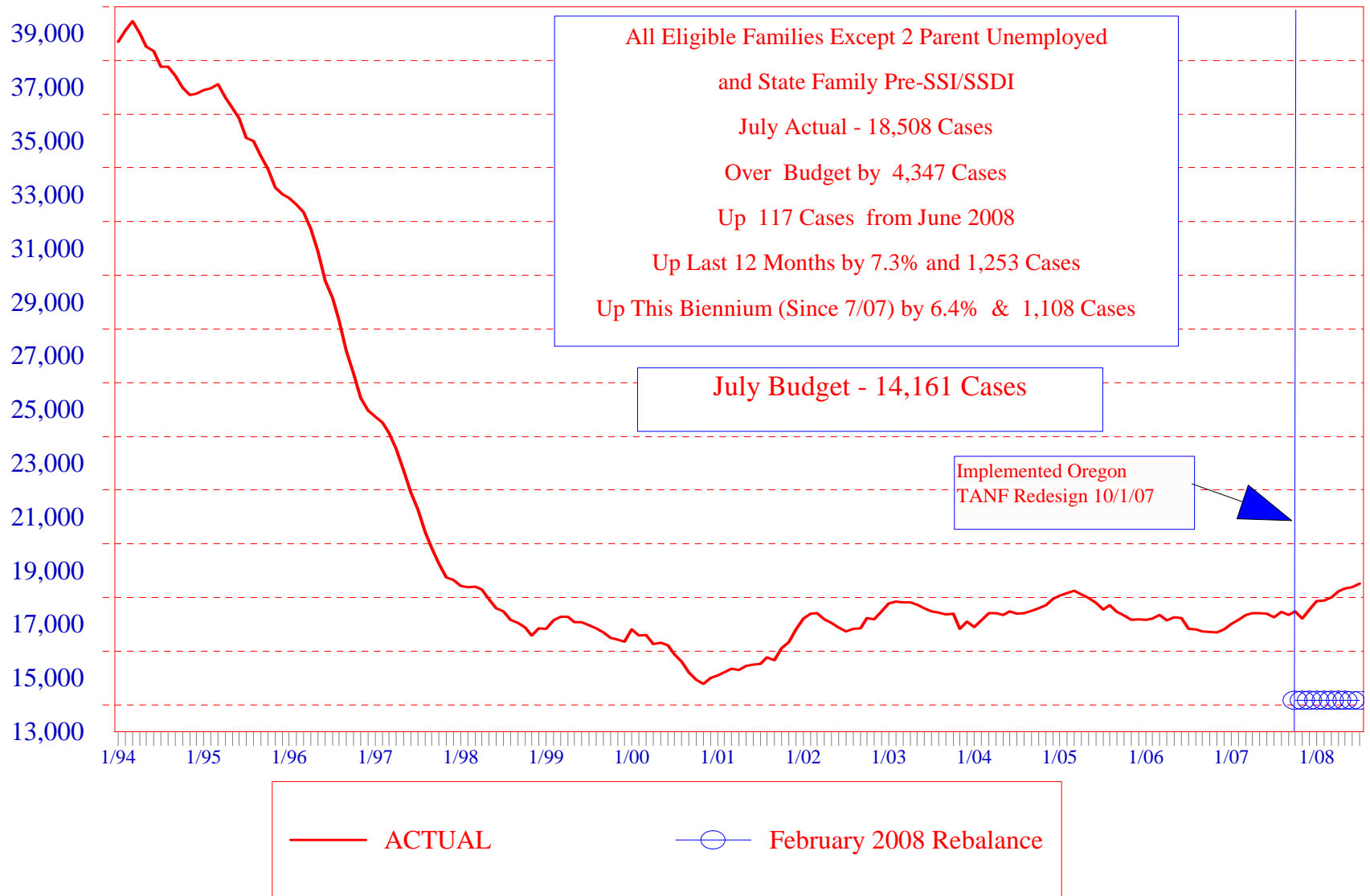
STATE FAMILY PRE-SSI/SSDI CASELOAD



OREGON JOBS PROGRAM MONTHLY PLACEMENTS 1992 - 2008

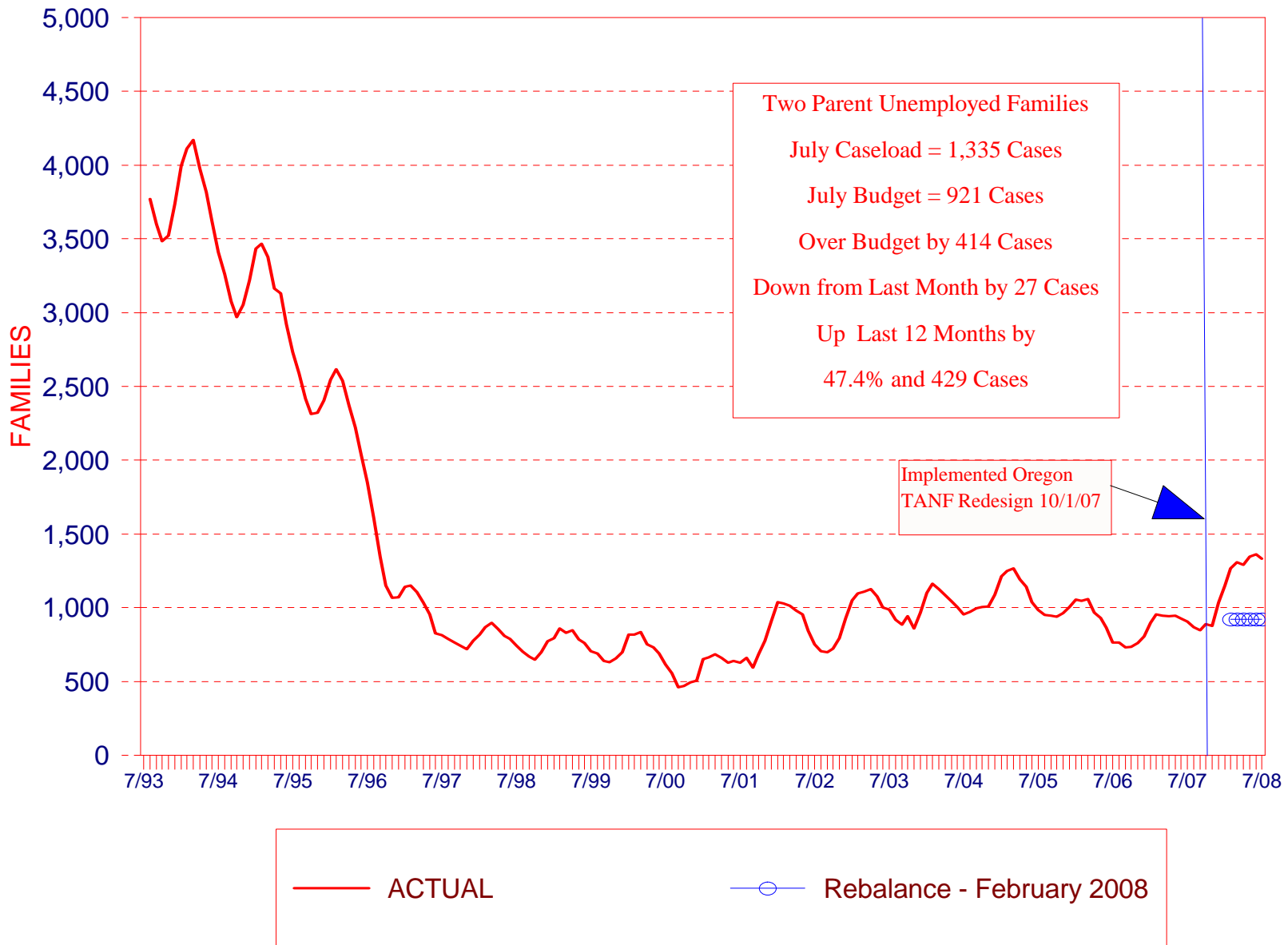


OREGON TANF BASIC CASELOAD ACTUAL AND BUDGETED



OREGON TANF-UN CASELOAD

ACTUAL AND BUDGETED

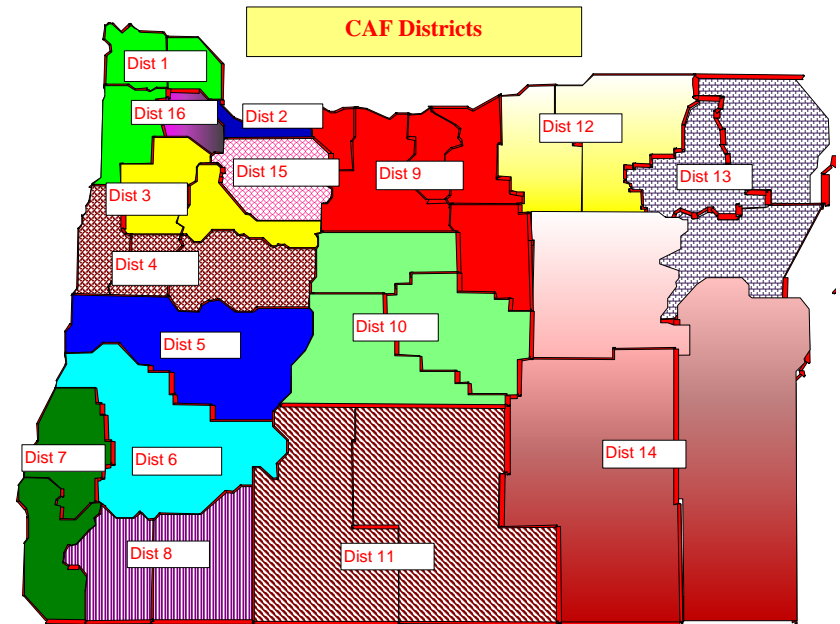
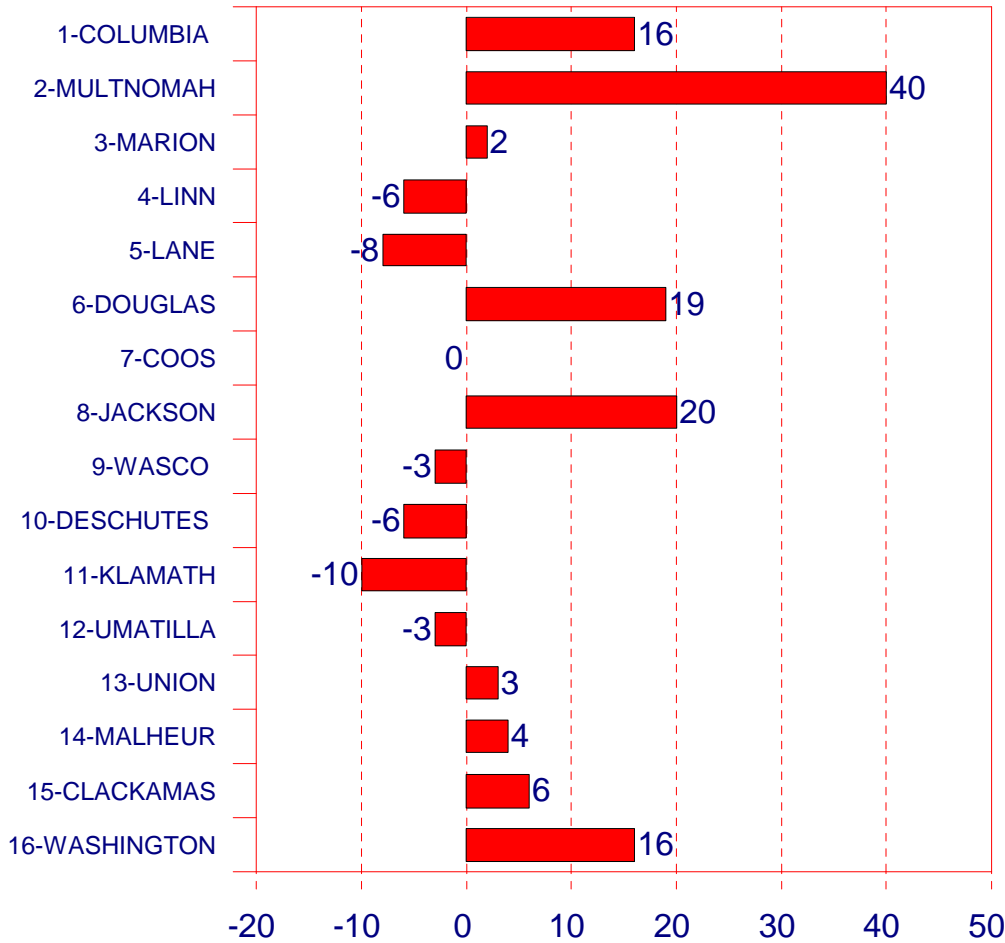


OREGON TANF BASIC & UN CASELOAD

COMBINED CHANGE THIS MONTH BY DISTRICT

July 2008

Districts*



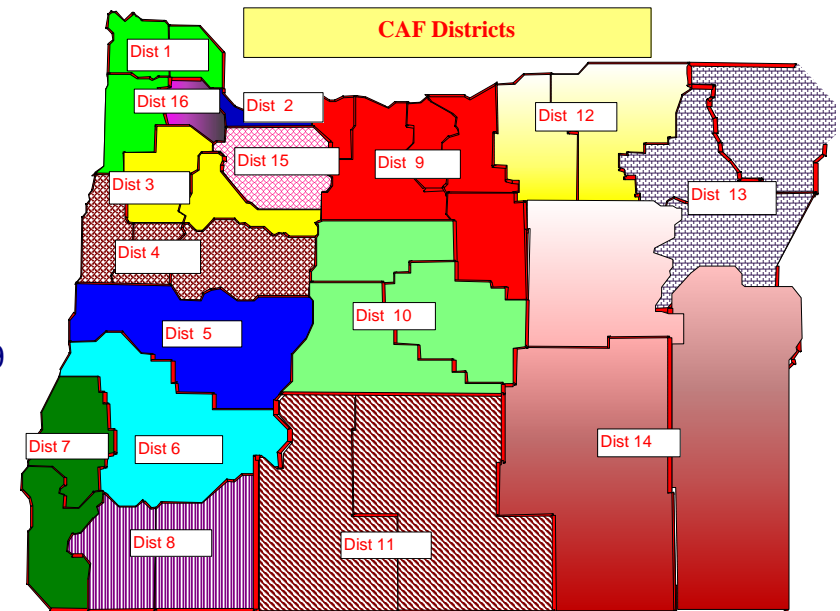
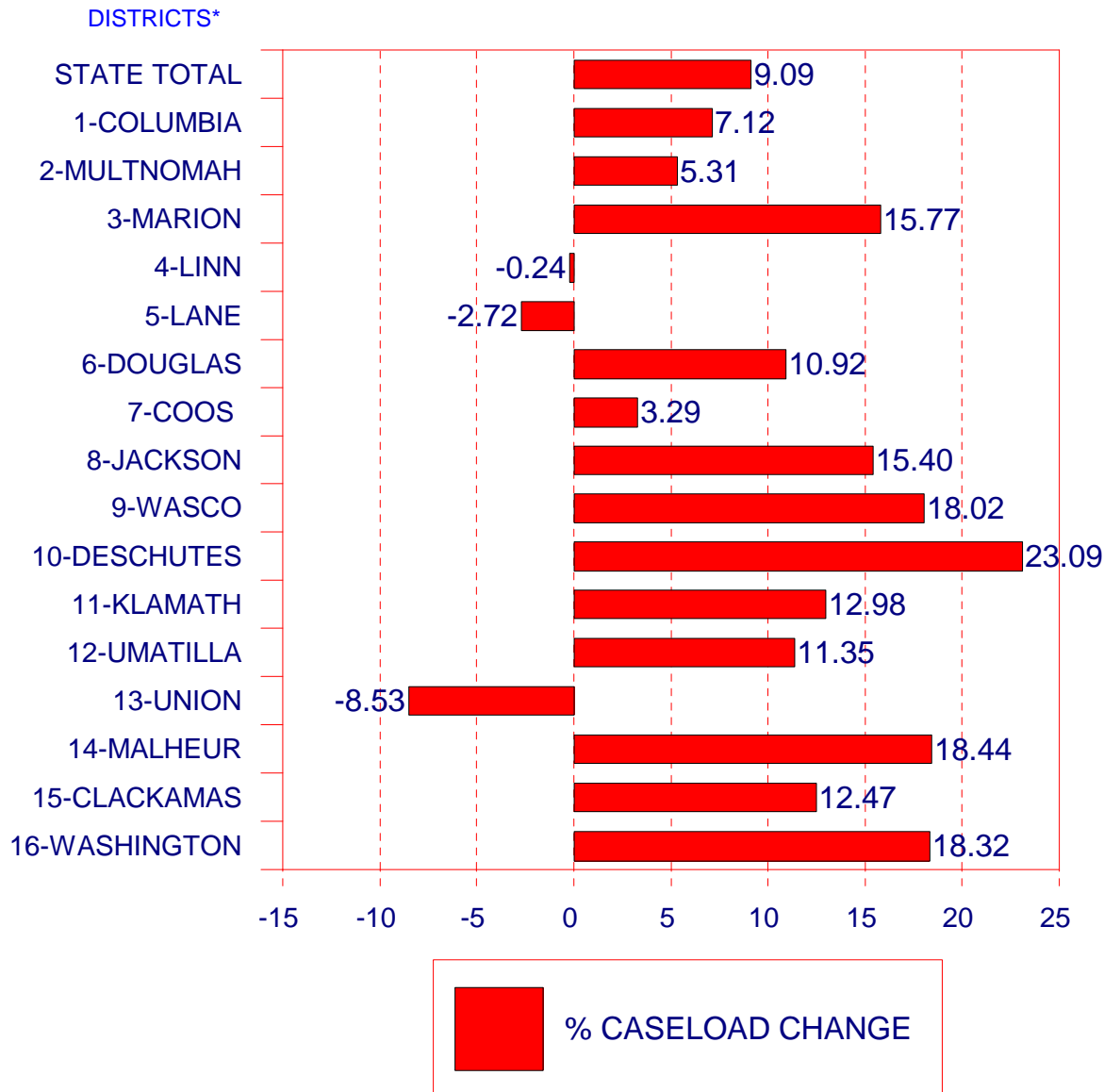
*District is listed by the most populous county in the geographic area. See page 2 for a complete listing of the counties.

OREGON TANF BASIC & UN CASELOAD

% CHANGE SINCE 10/07 BY DISTRICT

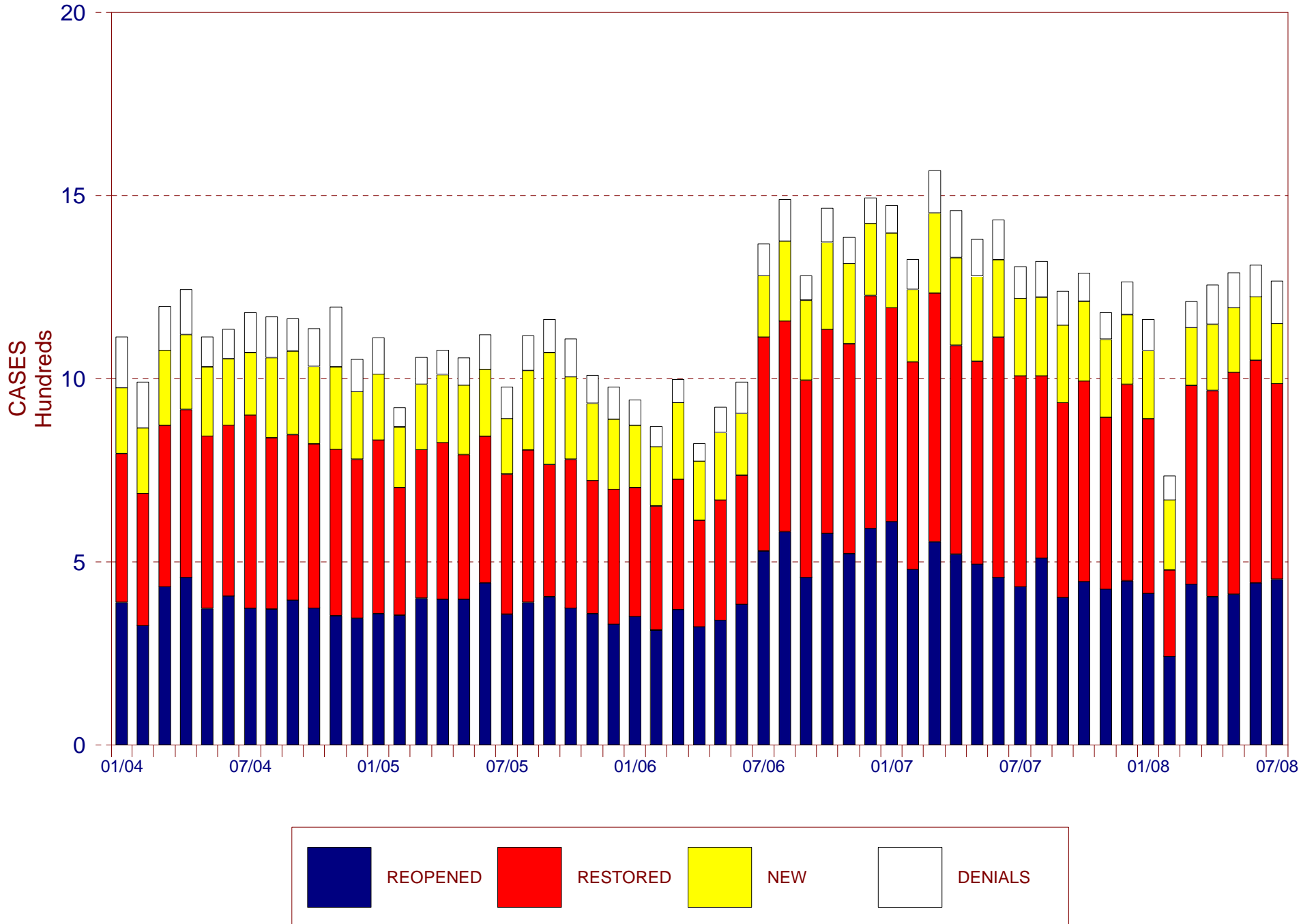
MAP 9

July 2008



*District is listed by the most populous county in the geographic area. See page 2 for a complete listing of the counties.

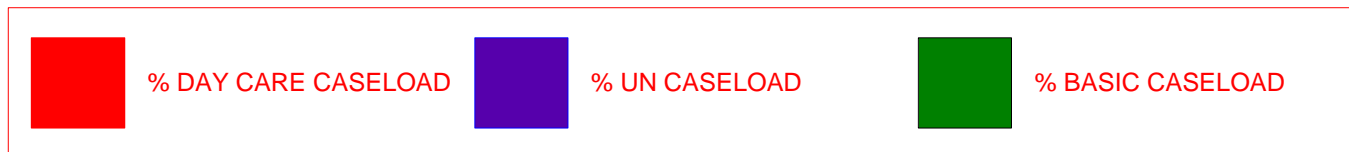
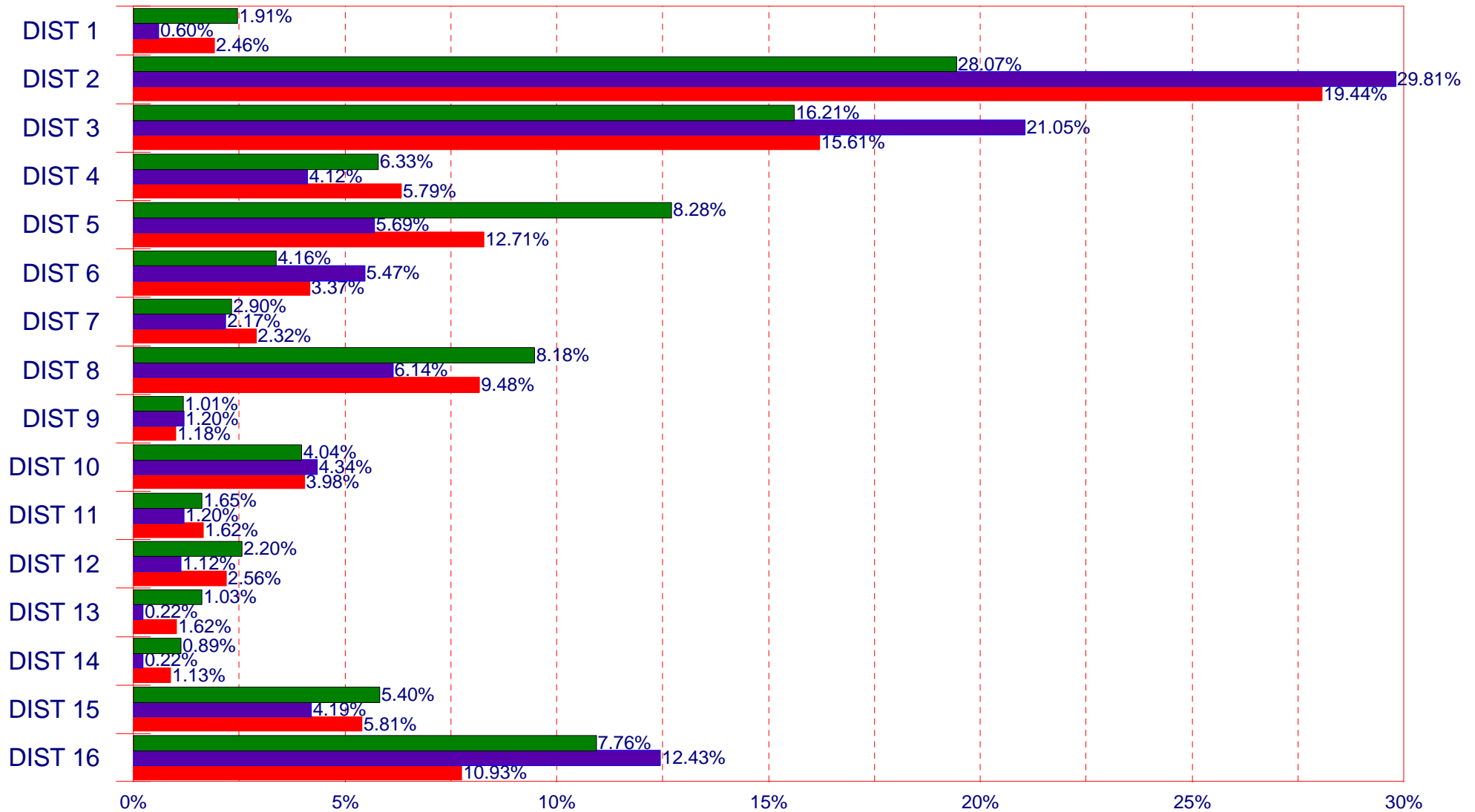
OREGON TANF MONTHLY INTAKE BY TYPE OF ACTION



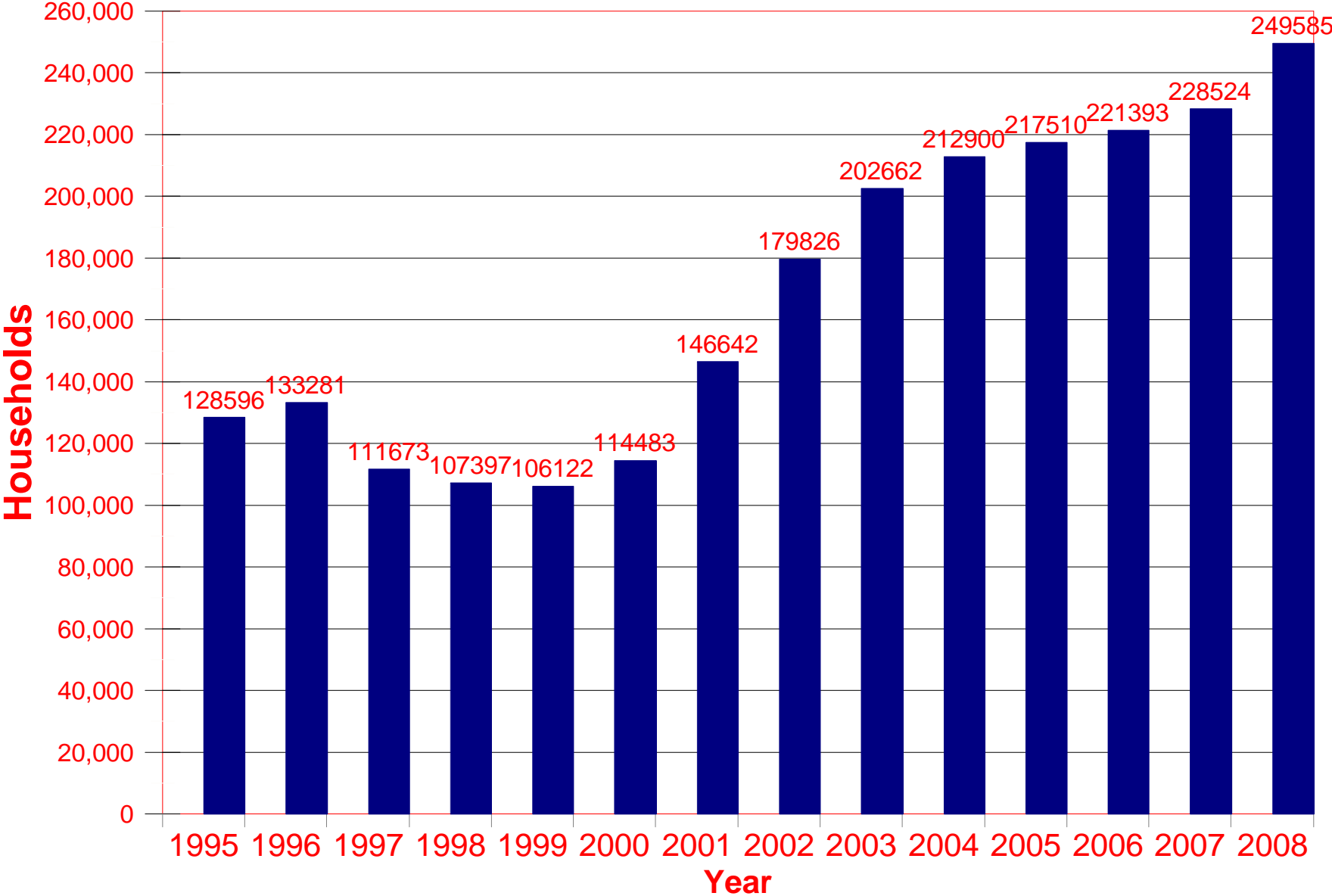
PERCENT OF STATEWIDE TOTALS

DISTRICTS

BY DISTRICT



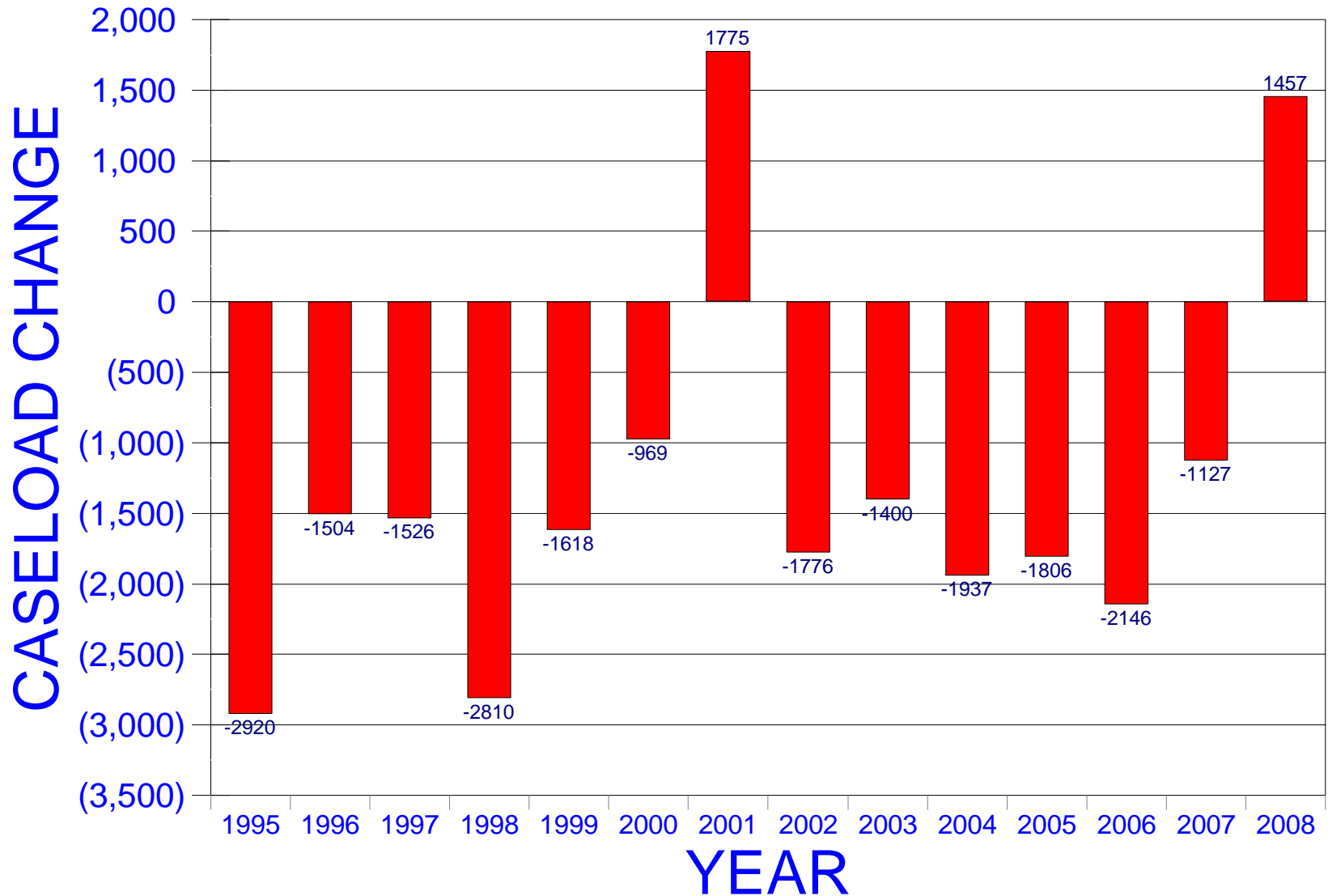
Oregon Food Stamp Households-July



OREGON FOOD STAMP HOUSEHOLDS

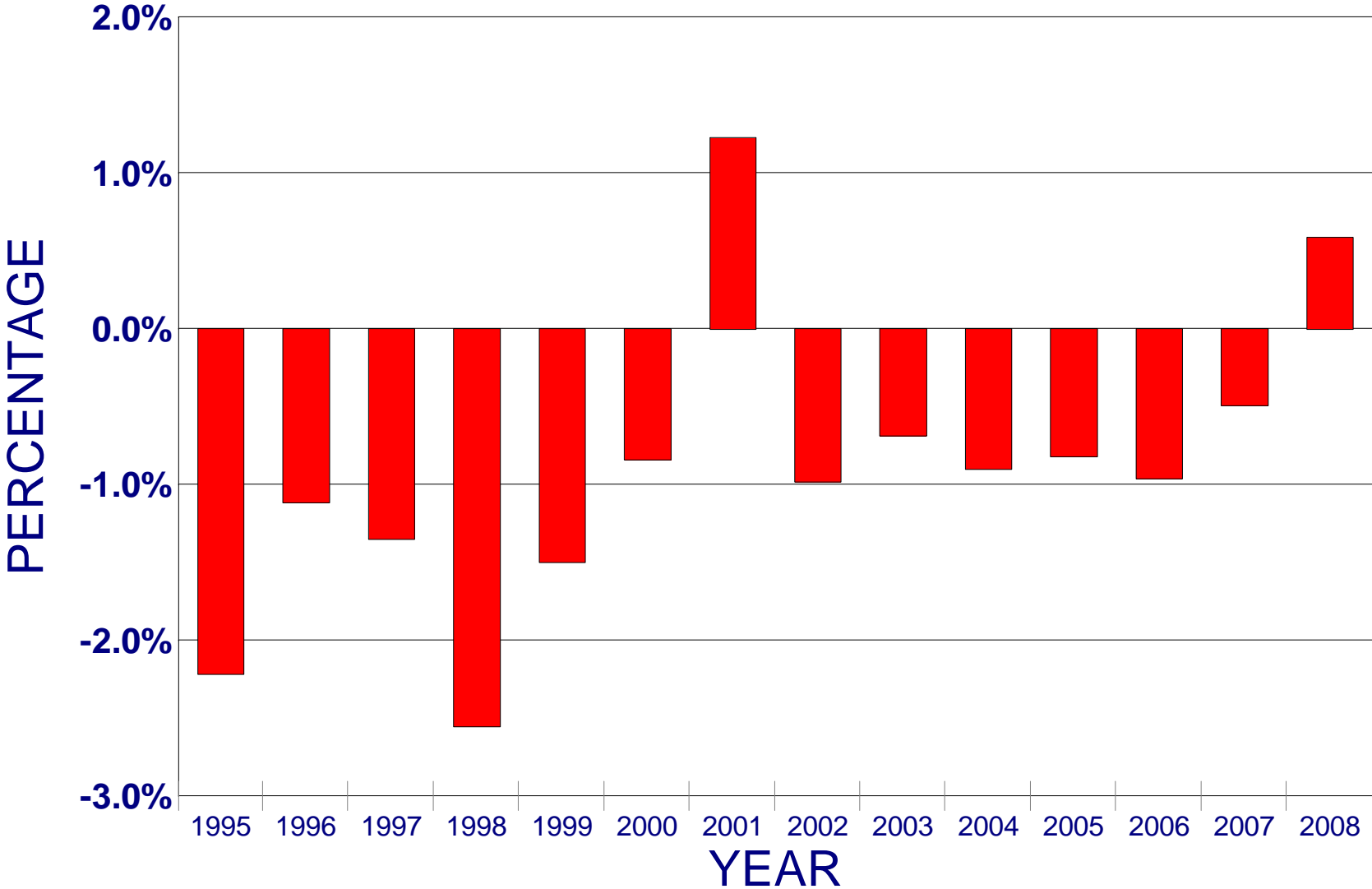
MONTHLY CASELOAD CHANGE - JUNE-JULY

13

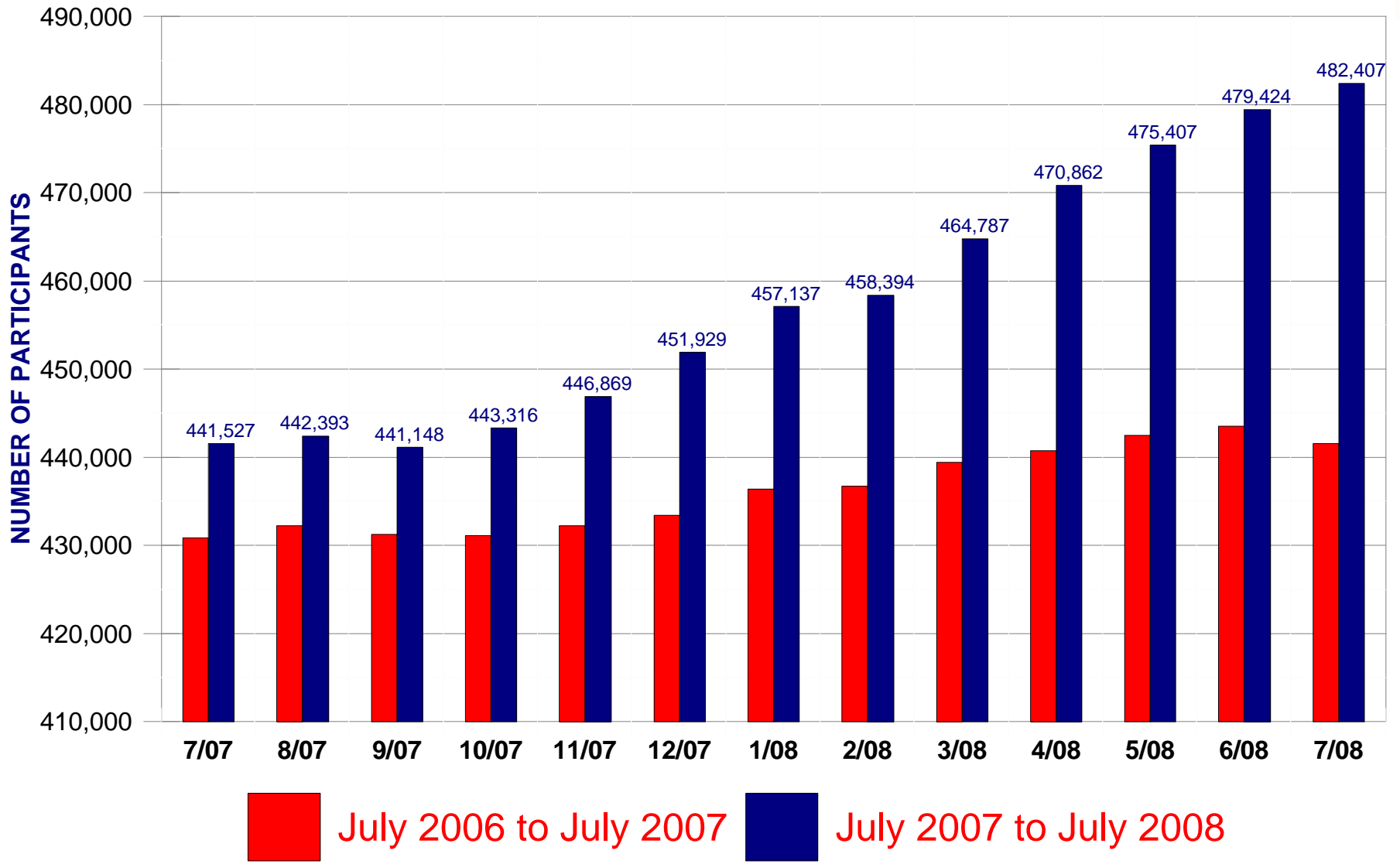


OREGON FOOD STAMP HOUSEHOLDS

% MONTHLY CASELOAD CHANGE - JUNE-JULY

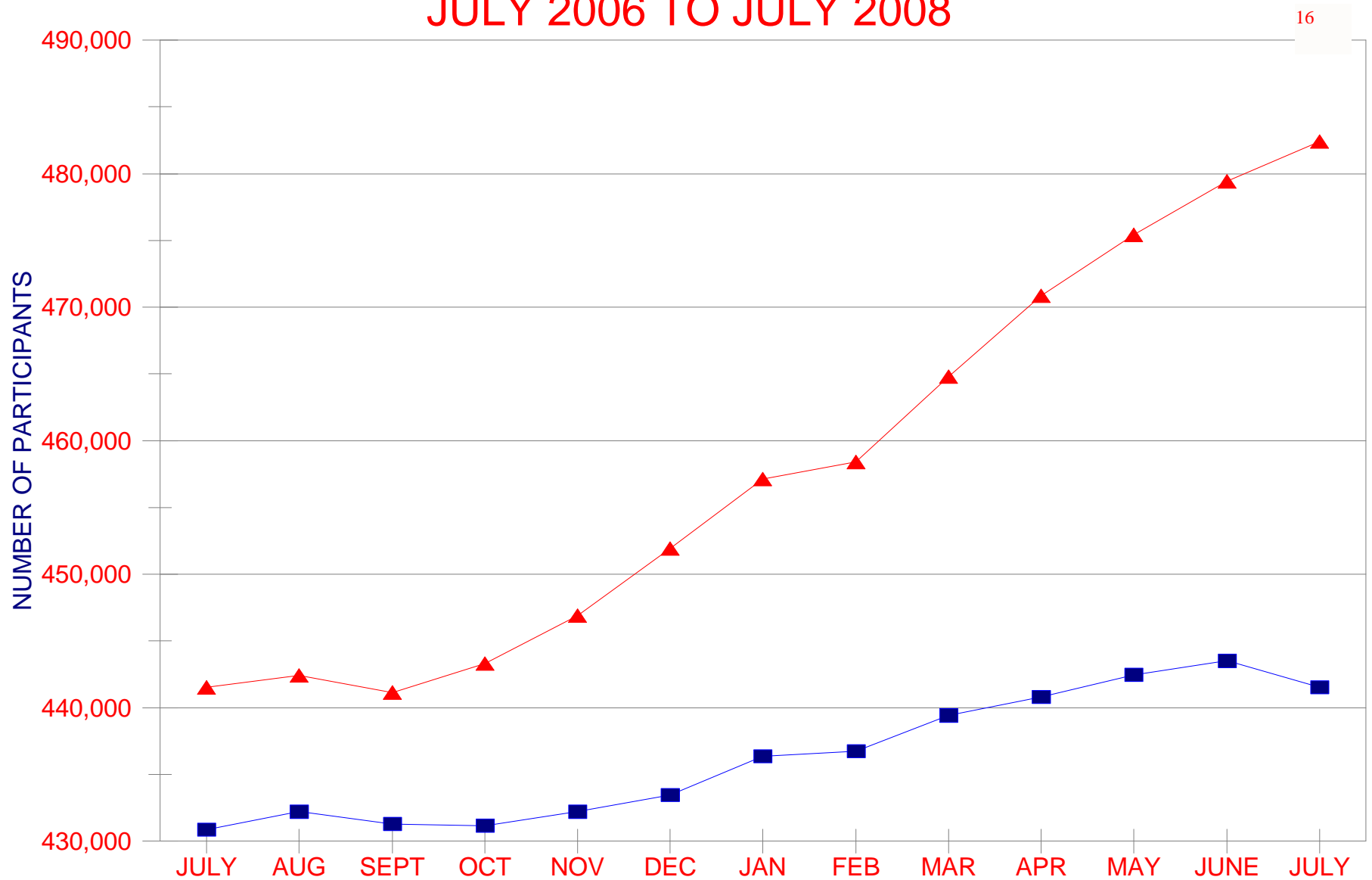


OREGON FOOD STAMP PARTICIPANTS



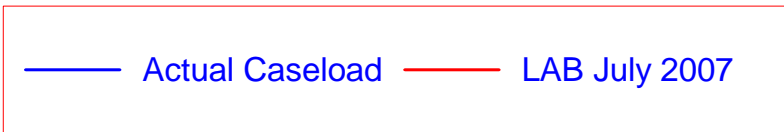
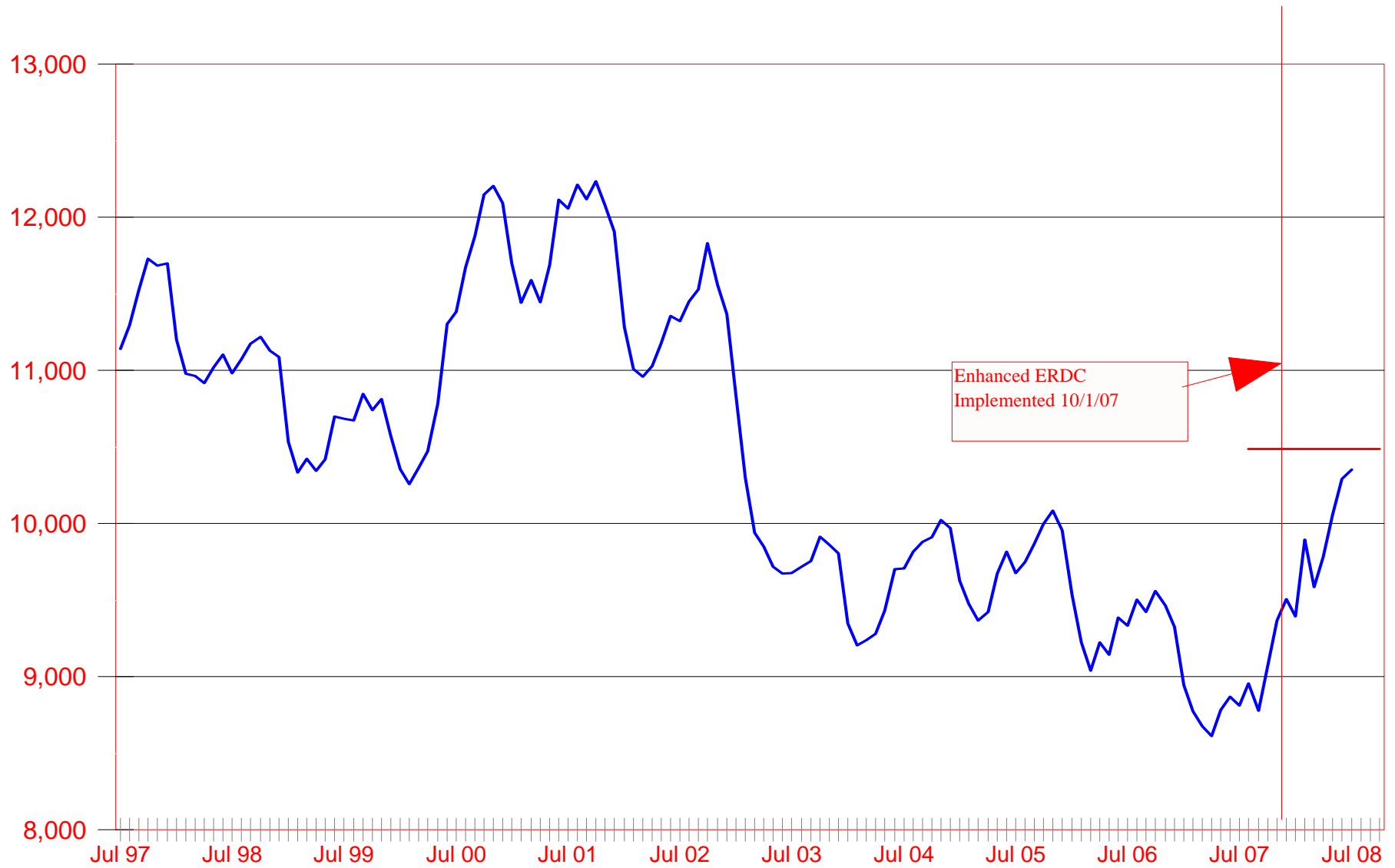
OREGON FOOD STAMP PARTICIPANTS

JULY 2006 TO JULY 2008



—▲— July 2007 to July 2008 —■— July 2006 to July 2007

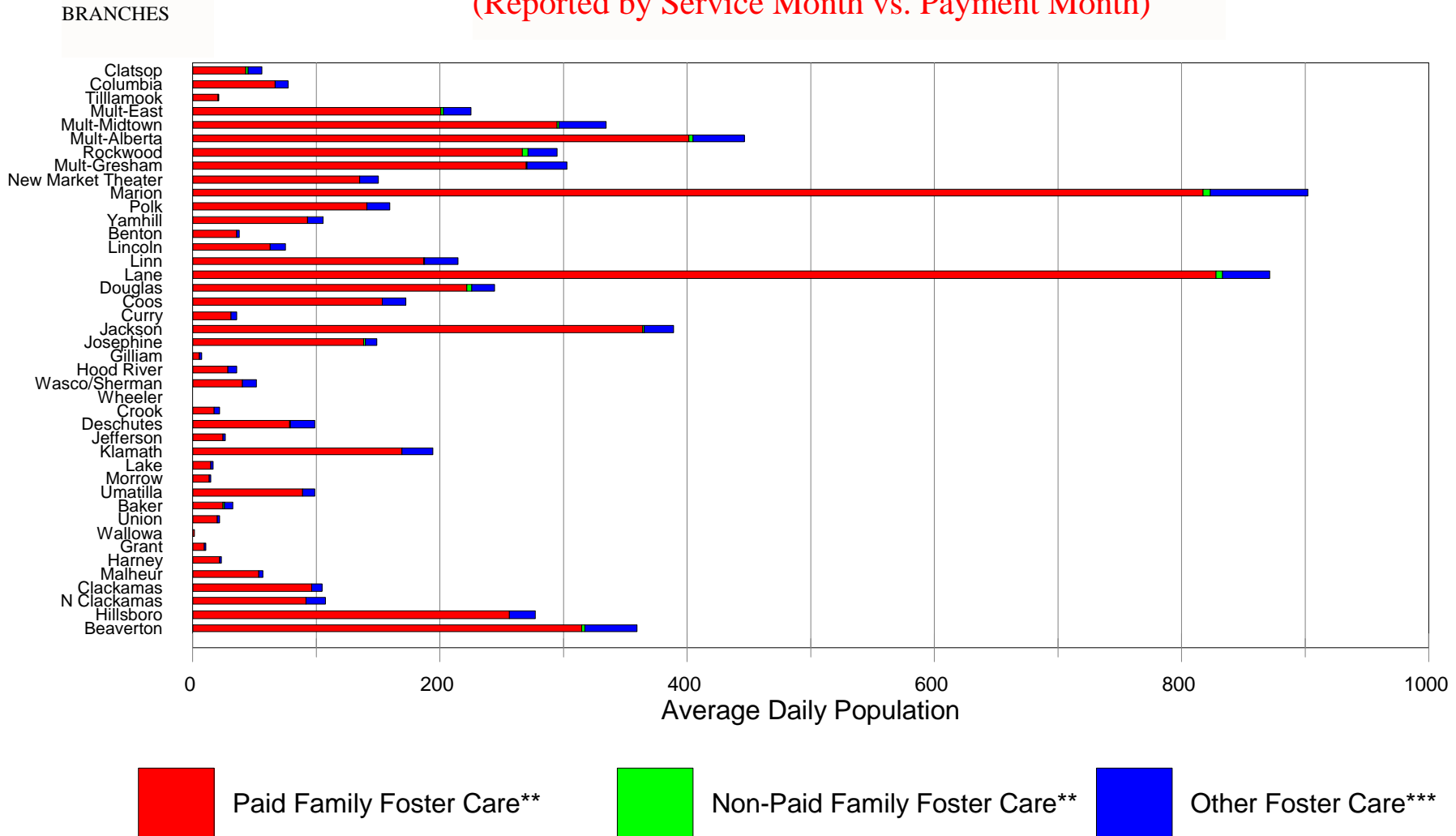
ERDC CASES



CHILD WELFARE - JUNE 2008

ADP* IN SUBSTITUTE CARE by BRANCH

(Reported by Service Month vs. Payment Month)



* Average Daily Population

** Includes Family Shelter Care, Family Foster Care, Relative Family Foster Care, and Family Group Home Care

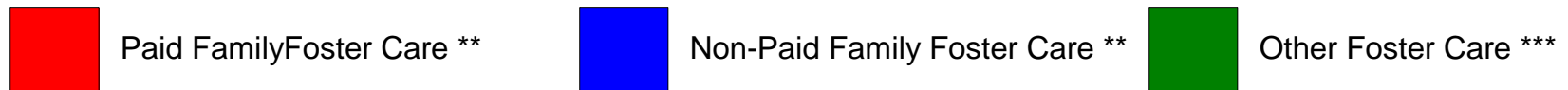
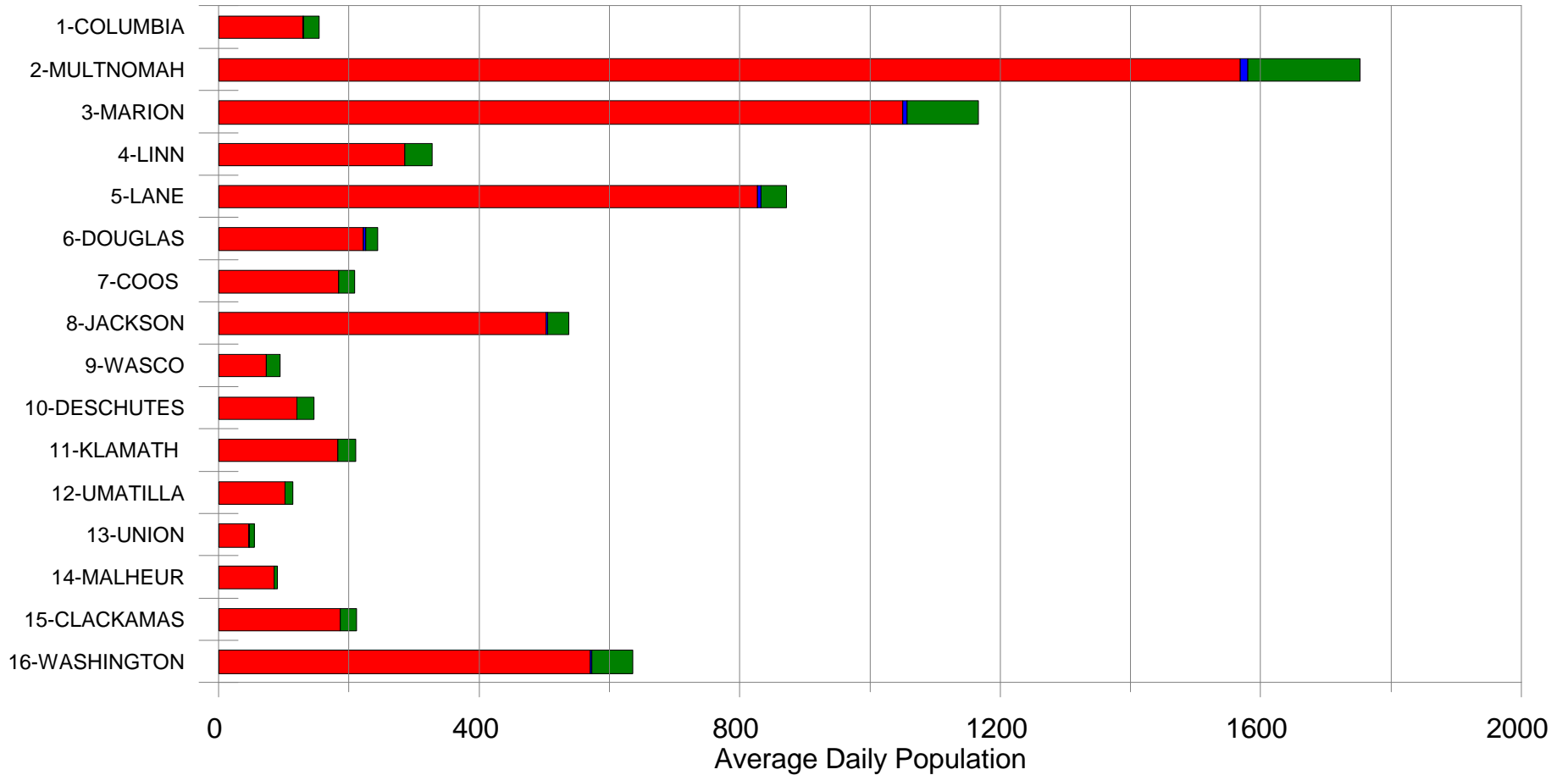
*** Includes Professional Shelter Care, Psychiatric Residential Treatment, Independent Living, and Residential Treatment

CHILD WELFARE - JUNE 2008

ADP* IN SUBSTITUTE CARE by DISTRICT

Districts****

(Reported by Service Month vs. Payment Month)



* Average Daily Population

** Includes Family Shelter Care, Family Foster Care, Relative Family Foster Care, and Family Group Home Care

*** Includes Professional Shelter Care, Psychiatric Residential Treatment, Independent Living, and Residential Treatment

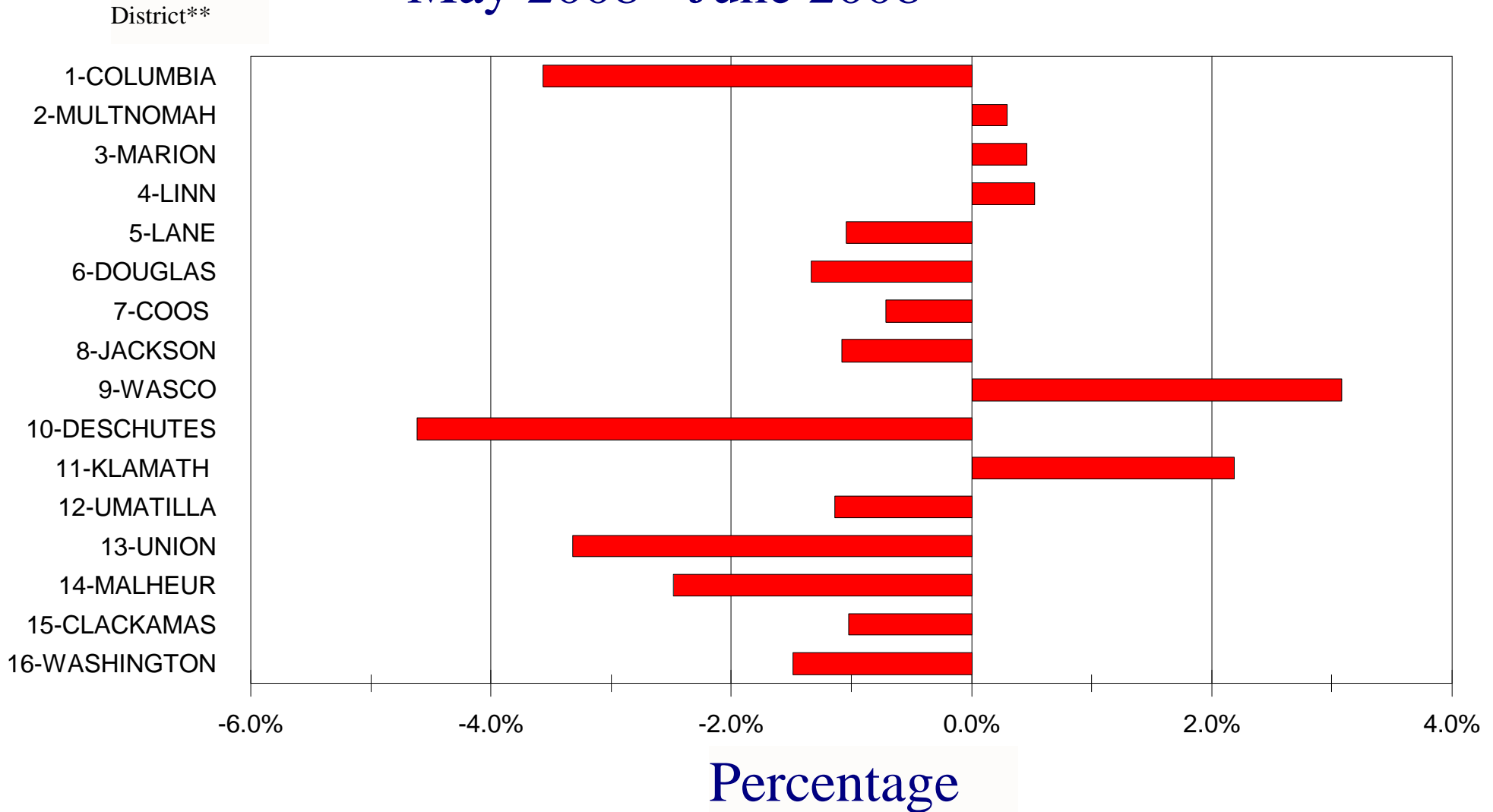
**** District is listed by the most populous county in the geographic area. See page 2 for a complete listing of the counties.

Percent ADP Change by DISTRICT*

Children in Substitute Care

May 2008 - June 2008

20



* Includes Paid & Non Paid Family Shelter Care, Family Foster Care, Relative Family Foster Care, Family Group Home Care and Residential TX

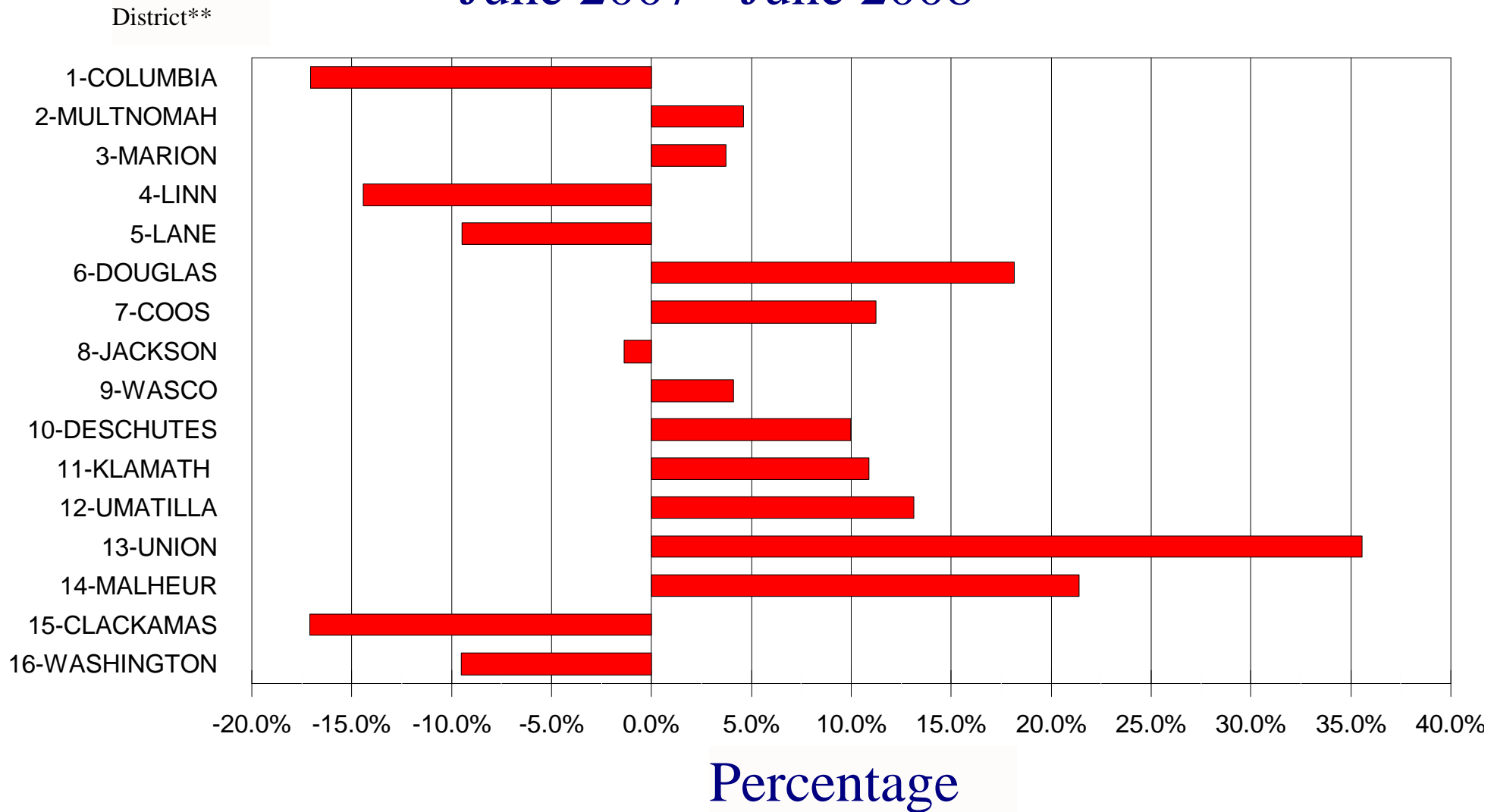
** District is listed by the most populous county in the geographic area. See page 2 for a complete listing of the counties.

Yearly % ADP Change by DISTRICT*

21

Children in Substitute Care

June 2007 - June 2008

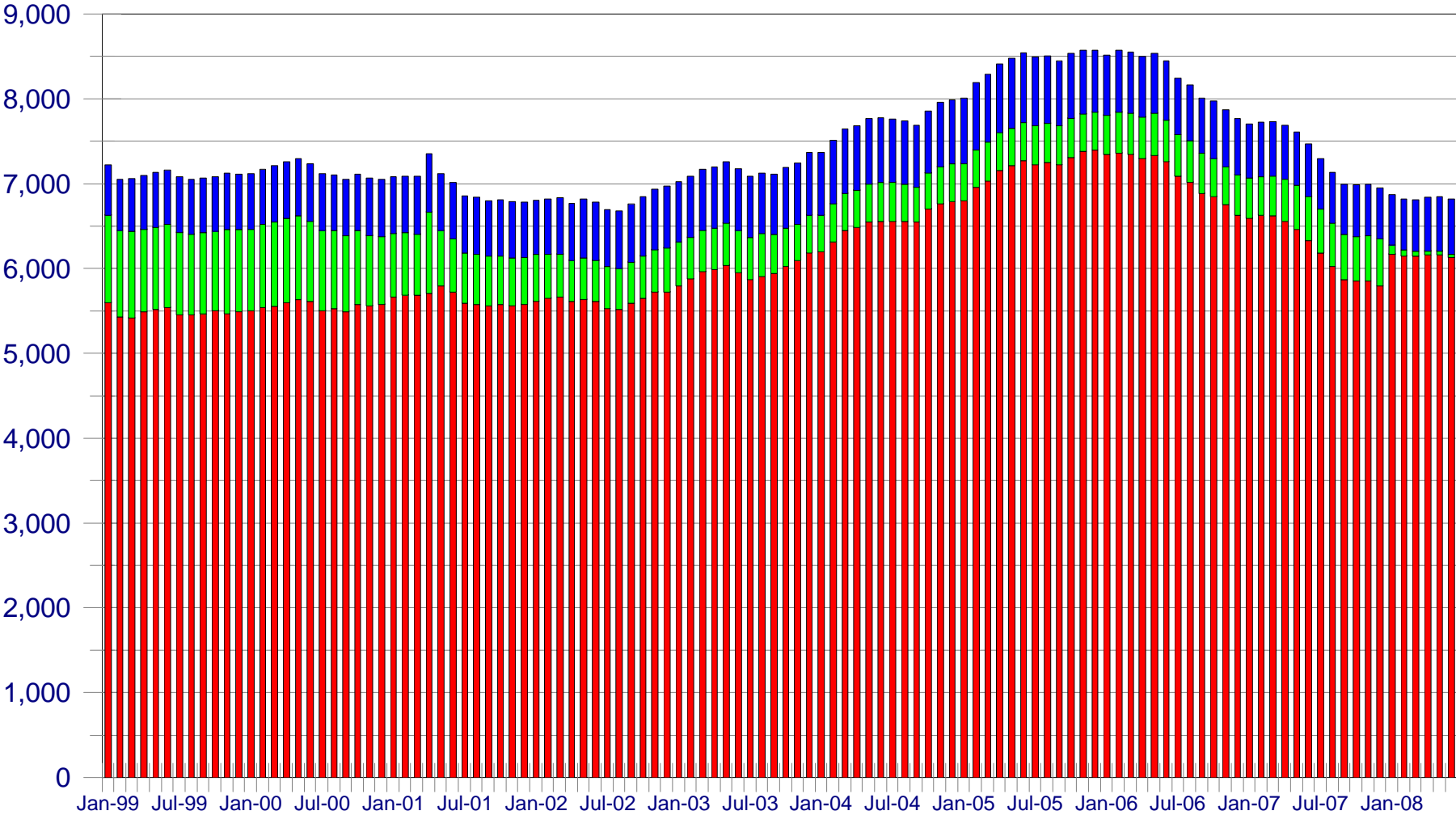


*Includes Paid & Non Paid Family Shelter Care, Family Foster Care, Relative Family Foster Care, Family Group Home Care, & Residential TX

** District is listed by the most populous county in the geographic area. See page 2 for a complete listing of the counties.

CHILD WELFARE-STATEWIDE ADP

CHILDREN IN SUBSTITUTE CARE-PAST 9 YRS



PAID FAMILY FOSTER CARE



NON-PAID FAMILY FOSTER CARE

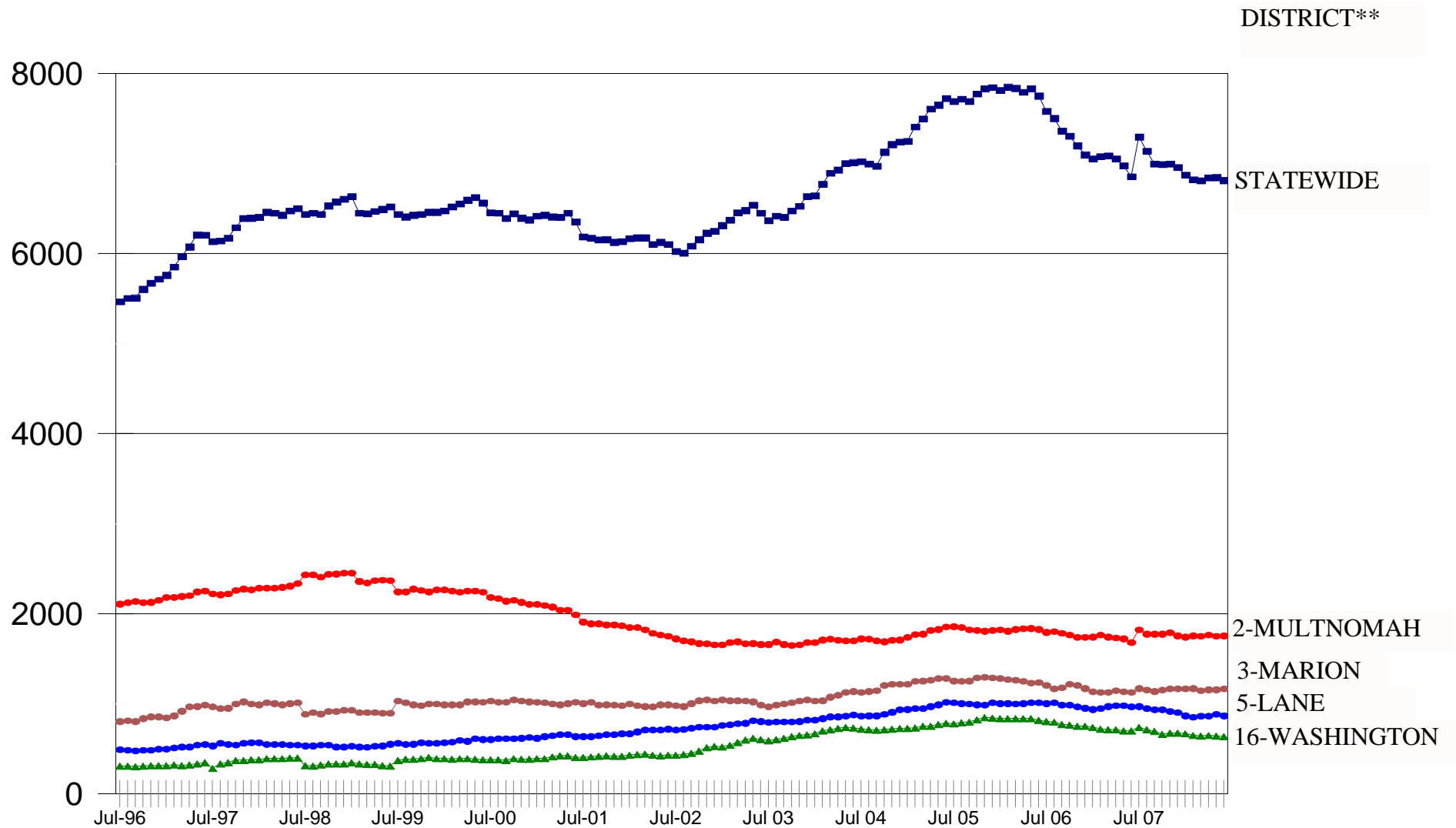


OTHER FOSTER CARE

TOTAL FAMILY FOSTER CARE-PAST 11 YRS*

BY DISTRICT THROUGH JUNE 2008

23

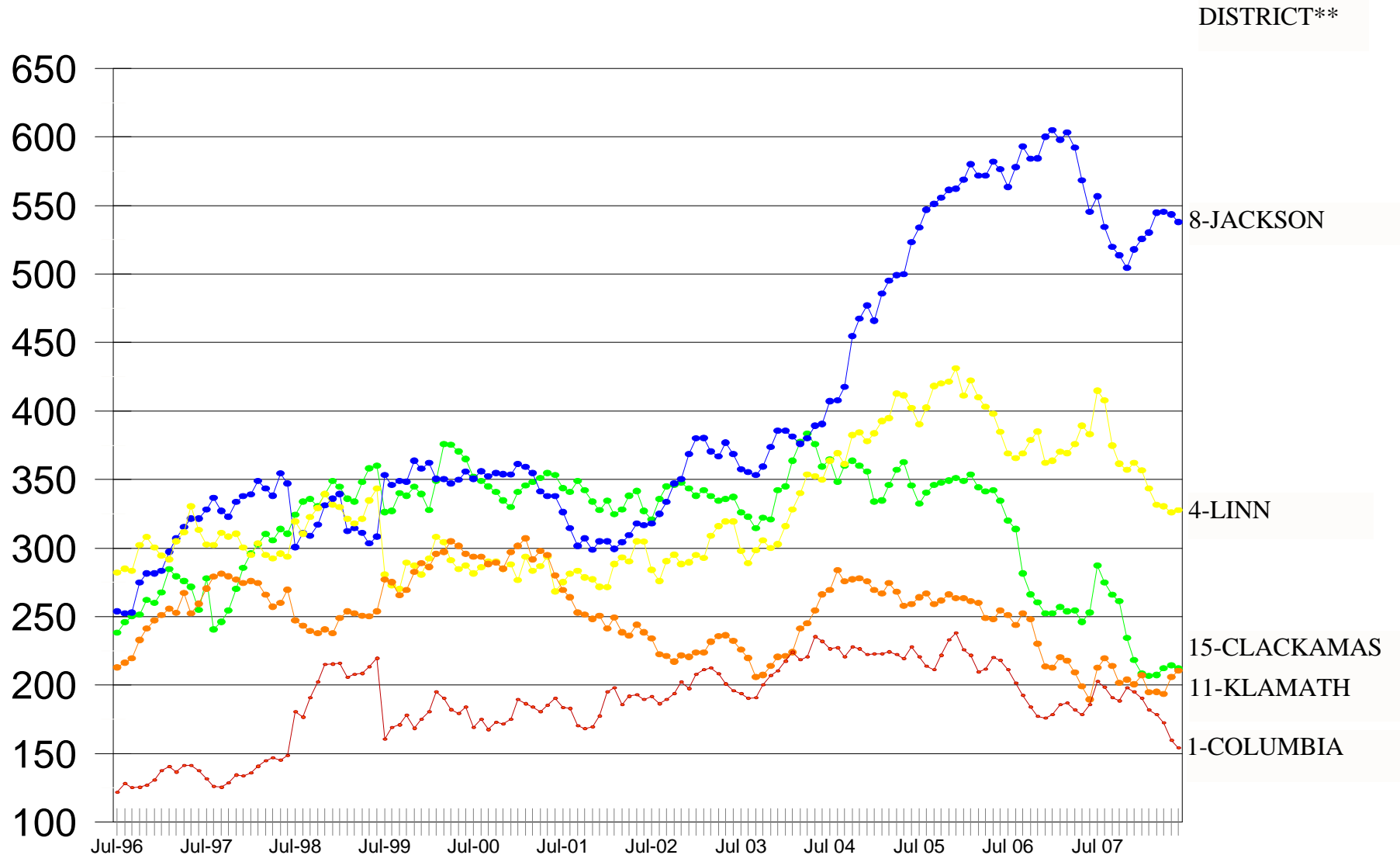


*Includes Paid & Non-Paid Foster Care, Family Shelter Care, Family Foster Care, Relative Family Foster Care, Family Group Home Care & Residential TX
As of July 2007 this report also includes Residential Treatment Foster Care.

**District is listed by the most populous county in the geographic area. See page 2 for a complete listing of the counties.

TOTAL FAMILY FOSTER CARE-PAST 11 YRS*

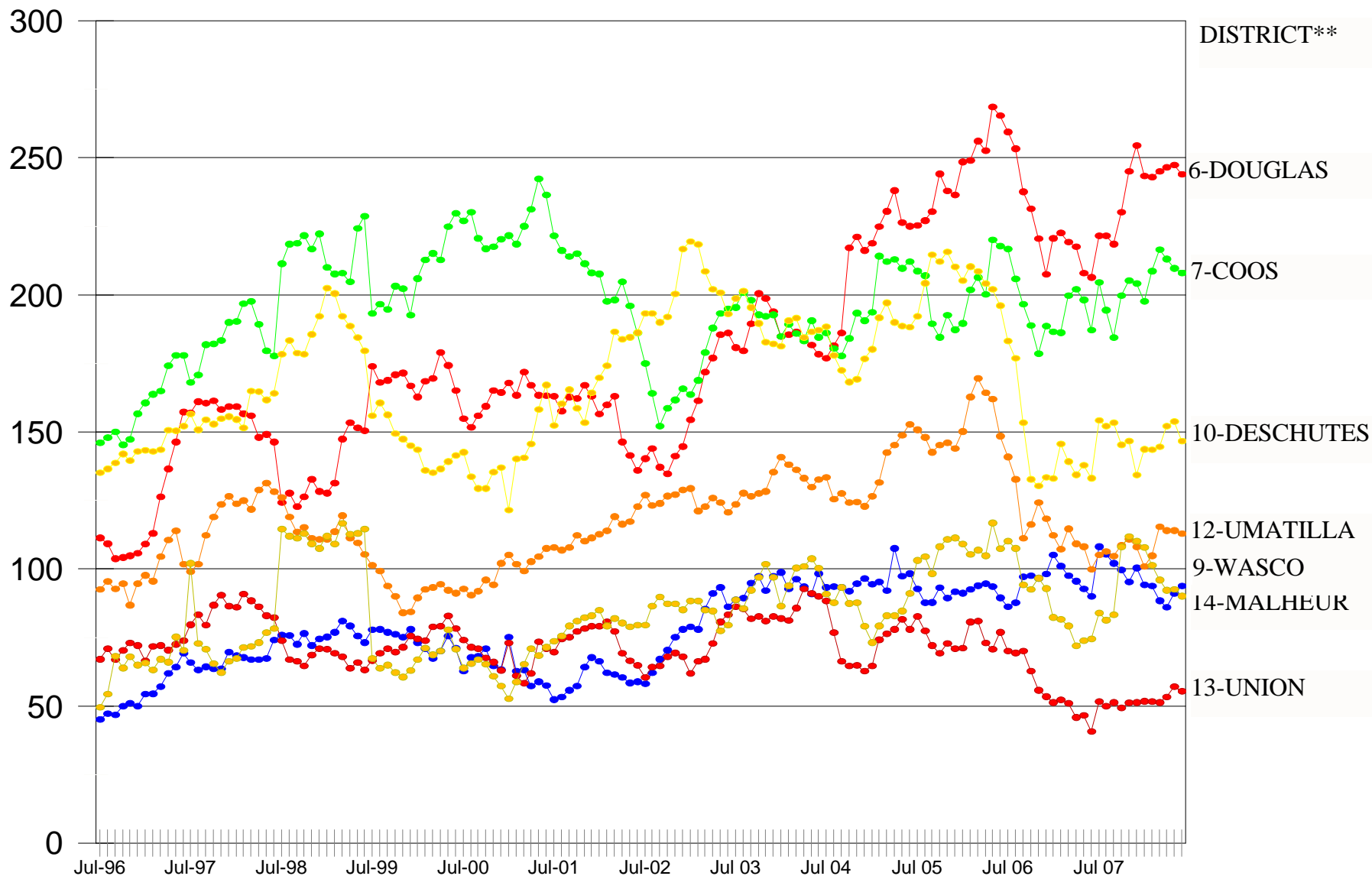
BY DISTRICT THROUGH JUNE 2008



*Includes Paid & Non-Paid Foster Care, Family Shelter Care, Family Foster Care, Relative Family Foster Care, Family Group Home Care & Residential RX
As of July 2007 this report also includes Residential Treatment Foster Care.

**District is listed by the most populous county in the geographic area. See page 2 for a complete listing of the counties.

TOTAL FAMILY FOSTER CARE-PAST 11 YRS* BY DISTRICT THROUGH JUNE 2008

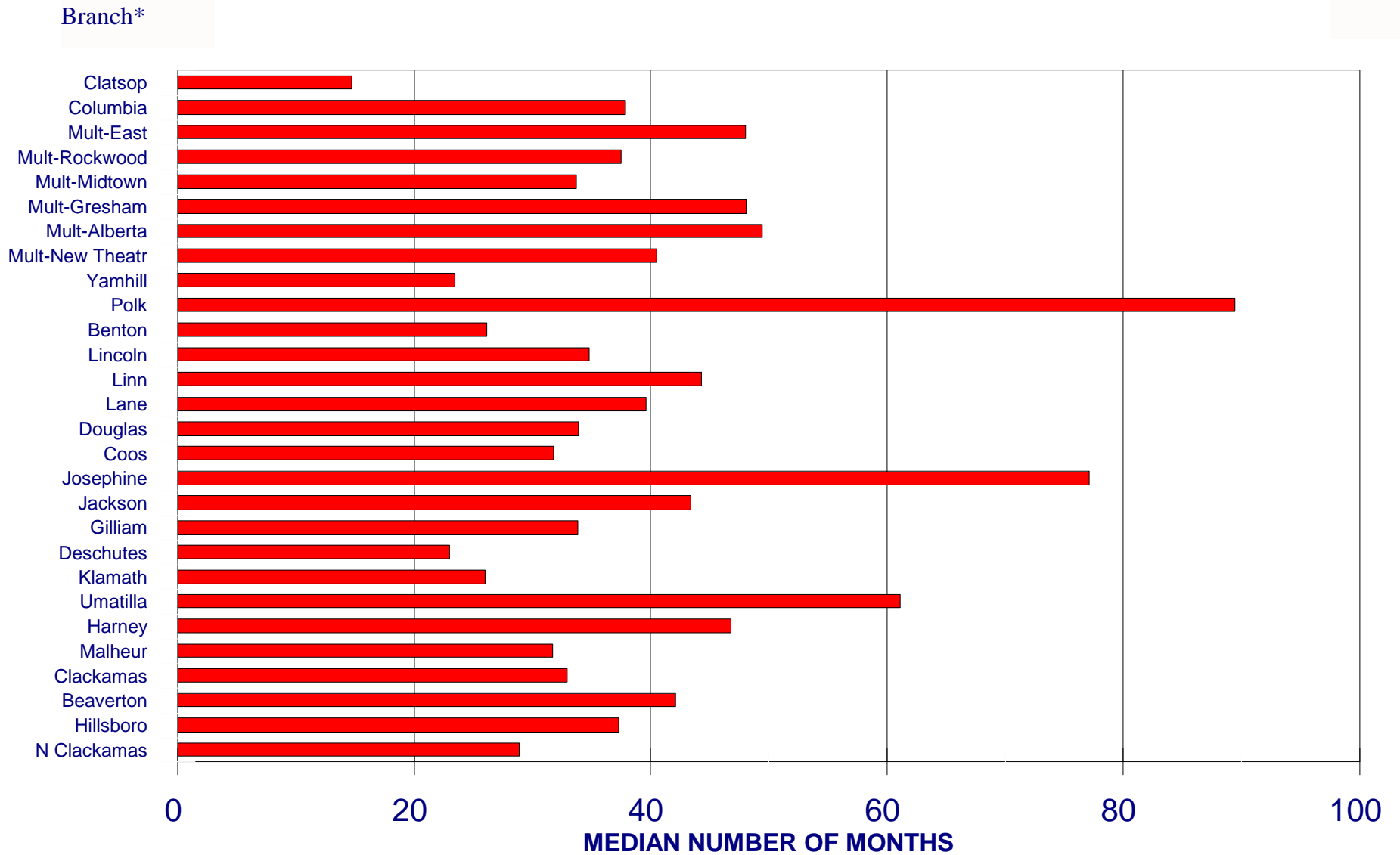


*Includes Paid & Non-Paid Foster Care, Family Shelter Care, Family Foster Care, Relative Family Foster Care, Family Group Home Care & Residential RX
As of July 2007 this report also includes Residential Treatment Foster Care.

**District is listed by the most populous county in the geographic area. See page 2 for a complete listing of the counties.

MEDIAN MONTHS TO ADOPTION

QUARTERLY REPORT - JAN-MAR 2008



*This chart does not include Tillamook, Marion, Curry, Hood River, Wasco/Sherman, Crook, Wheeler, Jefferson, Lake, Morrow, Baker, Union, Wallowa, or Grant branches as they did not have any adoption data for this period of time.