



April 2007 Forecast  
October 2007

Lindsay Ball, Director

### Prison

The prison population forecast tracked well with the actual population in terms of average daily population (ADP). The ADP forecast for January 1, 2007 through October 12, 2007 was 13,503. When compared to the actual ADP of 13,445 the error is +58 beds or 0.4 percent. The forecast has been within one percent of the actual population all of its 286 days. It has been within one-half of one percent for 159 (56 percent) of those days. The forecast population for October 12, 2007 was 9 beds (0.1 percent) higher than the actual population for that day (Figure 1). The population grew by 297 beds between January 1, 2007 and October 12, 2007.

Figure 1: Daily Prison Population

Forecast vs. Actual Prison Population

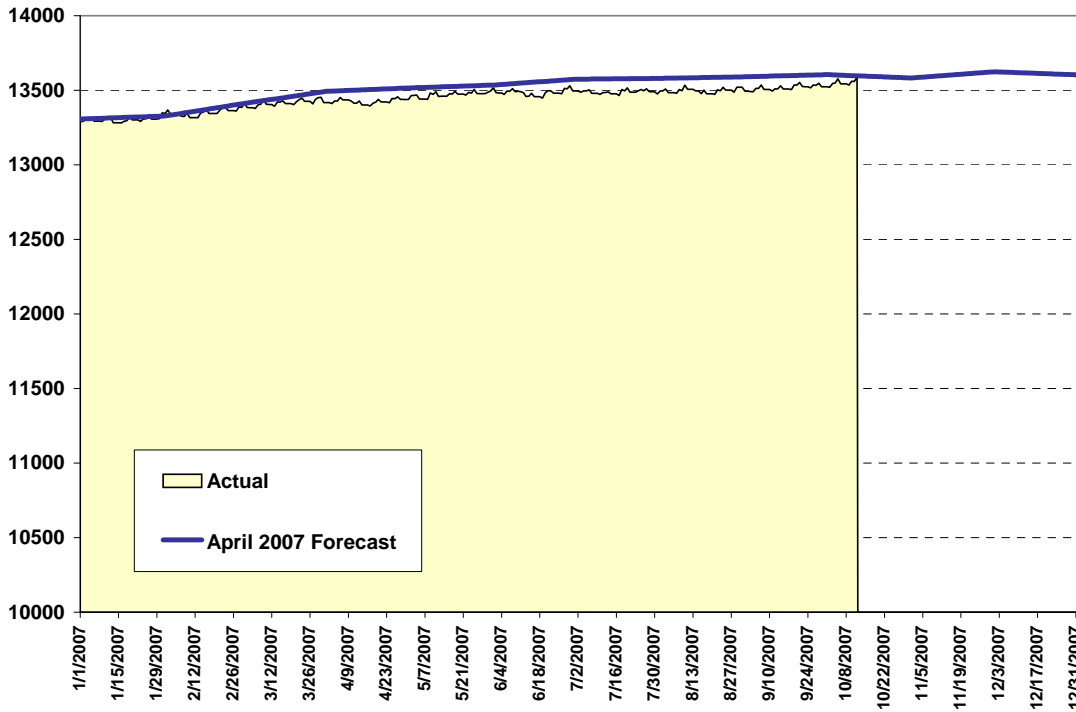


Table 1 shows sources of error as of July 1, 2007. Intakes and releases were both over-forecast. These were offsetting errors that resulted in a difference of 32 beds. Net transfers from other corrections systems and OYA returns added to that, leaving total error of 66 beds as of July 1, 2007.

Table 2 shows the forecast error by inmate group. The groups shown in Table 2 are explained in more detail in the Glossary at the end of this report.

Forecast as of 7/1/07	13574	
Actual Population 7/1/07	13508	
Total Forecast Error	66	0.5%
Intake Forecast	149	
Release Forecast	117	
Subtotal	32	
OYA Returns	24	
Net Transfers	-10	
Total Error	66	0.5%

		1/1/2007	2/1/2007	3/1/2007	4/1/2007	5/1/2007	6/1/2007	7/1/2007
<b>Measure 11</b>	Forecast	5380	5388	5402	5425	5439	5469	5493
	Error	0	1	0	17	28	46	73
<b>RPO</b>	Forecast	1533	1554	1579	1607	1617	1605	1604
	Error	0	-5	7	18	6	-31	-23
<b>All Other</b>	Forecast	6394	6385	6428	6461	6460	6461	6476
	Error	0	-26	4	29	29	-12	21
<b>OYA Returns and Net Transfers</b>		0	3	1	-4	-4	-3	6
<b>Total</b>	Forecast	13307	13328	13409	13493	13515	13535	13574
<b>Population</b>	Actual	13307	13360	13399	13424	13448	13529	13508
<b>Total Error</b>		0	-32	10	69	67	6	66
<b>Percent Error Forecast/Actual</b>		0.0%	-0.2%	0.1%	0.5%	0.5%	0.0%	0.5%
<b>Female</b>	Forecast	995	1001	1013	1019	1018	1024	1033
	Population	995	1006	1020	1023	1008	1002	998
	Error	0	-5	-7	-4	10	22	35

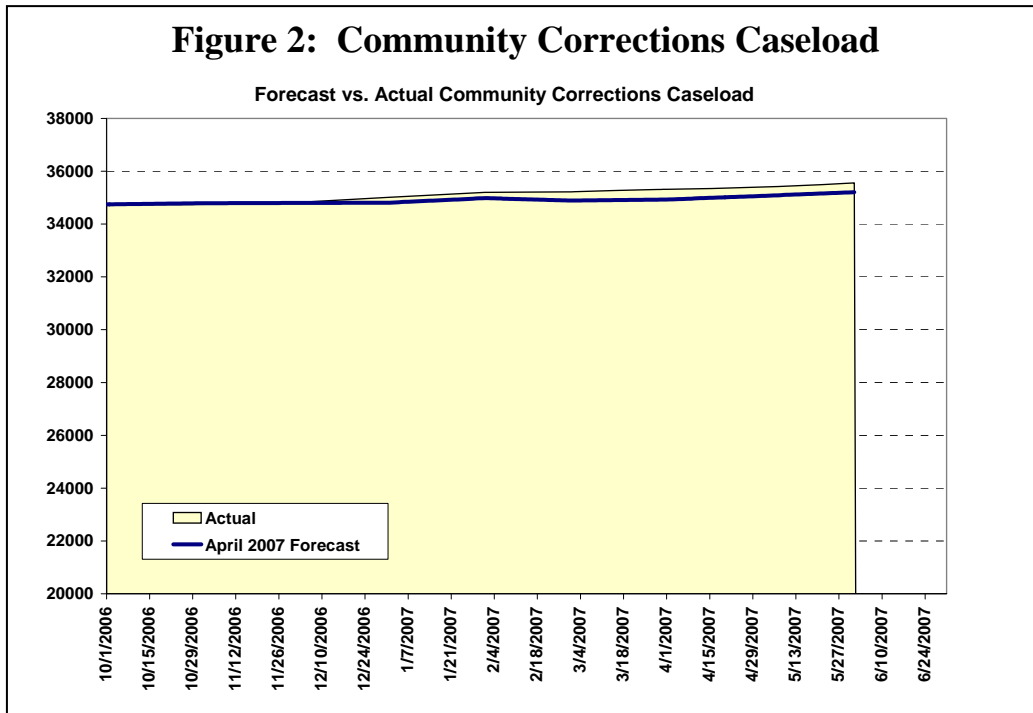
*Positive errors mean the forecast was high. Negative errors mean the forecast was low.  
These populations are defined in the glossary on the last page.*

### **Community Corrections**

The forecast average daily caseload (ADC) for community corrections was 34,904 for the 8 months ending June 1, 2007. This is 199 cases or 0.6 percent lower than the actual ADC of 35,103 for the period (Figure 2). The caseload grew by 816 cases from October 1, 2006 through June 1, 2007.

Table 3 shows the distribution of error among the various community corrections caseloads through June 1, 2007. Table 4 shows the source of error in each caseload as of April 1, 2007, the most recent detailed data available. The major source of error was an over-forecast of releases among parole and post-prison supervision offenders who were on abscond status as of the beginning date of the forecast. When these offenders are located, their sentences are extended to account for the time they absconded. If not treated separately in the forecast, their length of supervision characteristics become buried among the much larger group of non-absconders. Offenders on abscond status are treated as a separate group beginning with the October 2007 forecast.

## Figure 2: Community Corrections Caseload



### Table 3: Forecast vs. Actual Community Corrections Caseloads

		10/1/2006	11/1/2006	12/1/2006	1/1/2007	2/1/2007	3/1/2007	4/1/2007	5/1/2007	6/1/2007
Probation	Forecast	20192	20201	20256	20251	20442	20447	20518	20643	20752
	Error	0	-18	1	-64	-6	33	42	142	151
Parole/PPS	Forecast	13387	13422	13372	13379	13356	13255	13221	13226	13259
	Error	0	95	19	-175	-207	-369	-469	-509	-538
Local Control	Forecast	1165	1166	1172	1179	1183	1187	1189	1192	1195
	Error	6	-21	-35	37	-7	4	37	43	39
Total CC	Forecast	34744	34789	34800	34809	34981	34889	34928	35060	35206
	Actual	34738	34733	34815	35011	35201	35221	35318	35385	35554
Total Error		6	56	-15	-202	-220	-332	-390	-325	-348
Percent Error Forecast/Actual		0.0%	0.2%	0.0%	-0.6%	-0.6%	-0.9%	-1.1%	-0.9%	-1.0%

		10/1/2006	11/1/2006	12/1/2006	1/1/2007	2/1/2007	3/1/2007	4/1/2007	5/1/2007	6/1/2007
Level III Sanctions	Forecast	491	452	467	490	500	507	510	511	512
	Error	-2	-24	-32	28	16	29	35	-9	7

Positive errors mean the forecast was high. Negative errors mean the forecast was low.  
 These populations are defined in the glossary on the last page.

### Table 4: Sources of Error - Community Corrections Caseloads

Source	Probation	Parole/PPS	Local Control	Level III Sanctions
Forecast as of 4/1/07	20518	13221	1189	510
Actual Caseload 4/1/07	20476	13690	1152	475
Total Forecast Error	42	-469	37	35
<i>Estimated Sources of Error</i>				
Intake Forecast	200	62	132	196
Release Forecast	106	355	144	114
Unfunded Outcount	67	169	N/A	N/A
Total Error from Forecast	27	-462	-12	82
Error from "Data Migration"	15	-7	49	-47
Total Error	42	-469	37	35

## ***Glossary***

### **Measure 11**

ORS 137.700 and 707 mandate minimum sentences for any of 21 violent crimes, ranging from 70 to 300 months.

### **Repeat Property Offenders**

ORS 137.717 establishes 13 or 19-month presumptive sentences for repeat property offenders (RPOs).

### **OYA Transfers**

Some inmates are in the legal custody of DOC but the physical custody of the OYA. The prison population forecast is adjusted for inmates who transfer back to DOC institutions.

### **Net Transfers**

Some inmates serve part of their sentence in an Oregon institution and the remainder in another state's institution. An adjustment is made when these inmates transfer in or out of DOC institutions.

### **Local Control and Level III Sanctions**

Local Control (LC) refers to felony offenders sentenced to 12 or fewer months of incarceration. Level III sanctions are felony offenders sanctioned (rather than revoked) for 31 to 90 days. LC and sanctions offenders are in local custody, but funded by the State.

### **Felony Probation, Parole, and Post-Prison Supervision**

All actively supervised felony probationers and parolees. *Parole* pertains to released prison inmates who committed their crime prior to the inception of Sentencing Guidelines (1989). Guidelines offenders serve a term of *Post-Prison Supervision* after release from prison or LC. *Outcount* refers to offenders with an open community corrections sentence who are not on active supervision. Most offenders are on outcount due to absconding. *Data migration* refers to changes resulting from updates of individual records in the Department of Corrections' community corrections source data.

Copies of the Corrections Forecast Tracking Report and other documents are available at <http://www.oregon.gov/DAS/OEA/index.shtml>

The Office of Economic Analysis (OEA) resides in the Director's Office of the Department of Administrative Services. OEA produces and publishes the Oregon Corrections Population Forecast on a semi-annual basis. The latest forecast was released in October 2007.

#### Staff:

Dae Baek, Acting State Economist  
Michael Kennedy, Economist

Kanhaiya Vaidya, Senior Demographer  
Suzanne Porter, Corrections Forecast Analyst  
Holly Edwards, Administrative Assistant

155 Cottage Street N.E., U20  
Salem, OR 97301-3966

Phone: (503) 378-3405  
Fax: (503) 373-7643