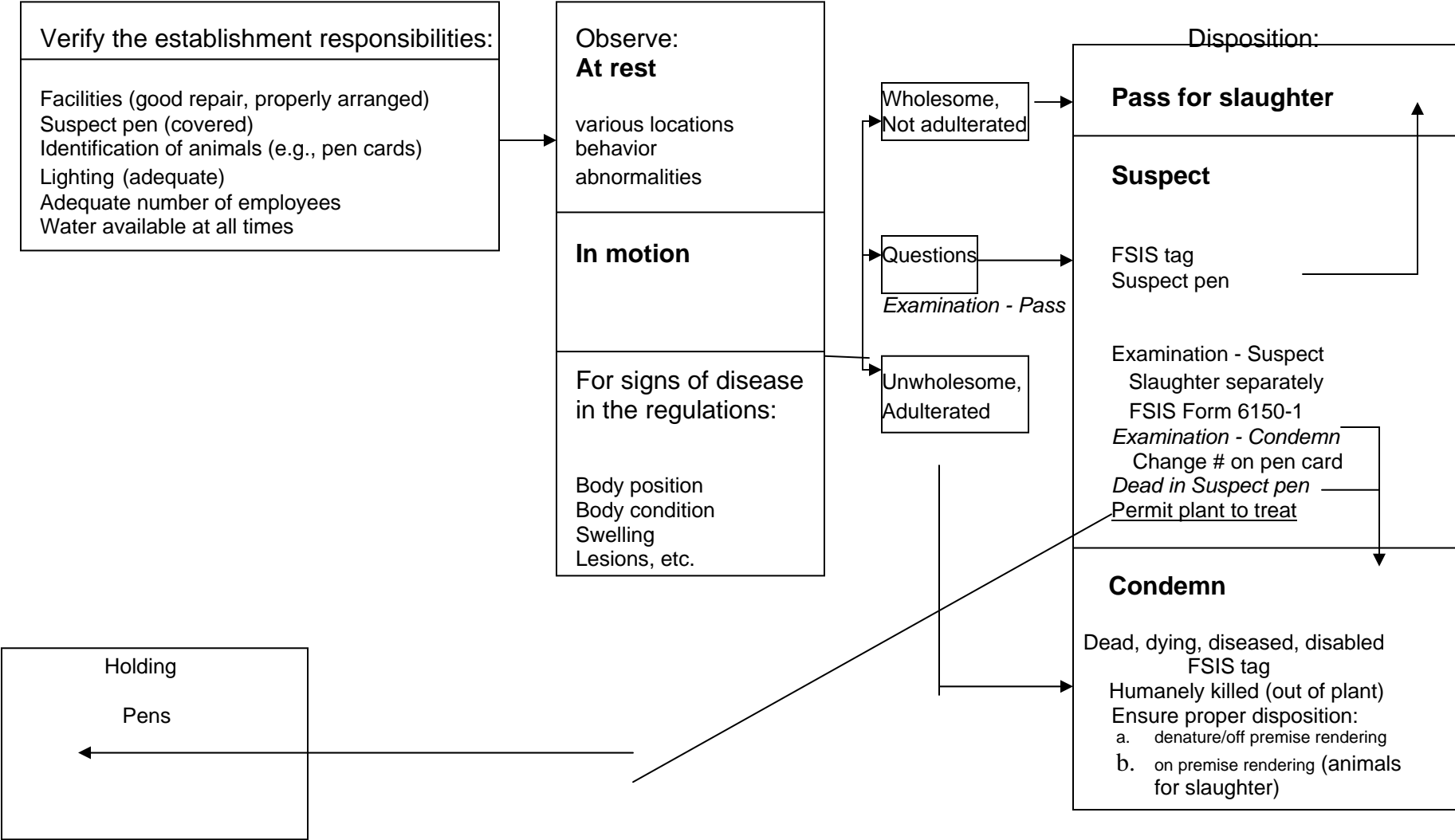


ANTE MORTEM INSPECTION PROCESS



Verify the establishment responsibilities:

- Facilities (good repair, properly arranged)
- Suspect pen (covered)
- Identification of animals (e.g., pen cards)
- Lighting (adequate)
- Adequate number of employees
- Water available at all times

Observe:
At rest

- various locations
- behavior
- abnormalities

In motion

For signs of disease in the regulations:

- Body position
- Body condition
- Swelling
- Lesions, etc.

Wholesome,
Not adulterated

Questions

Examination - Pass

Unwholesome,
Adulterated

Disposition:

Pass for slaughter

Suspect

- FSIS tag
- Suspect pen

Examination - Suspect
Slaughter separately
FSIS Form 6150-1

- Examination - Condemn*
- Change # on pen card*
- Dead in Suspect pen*
- Permit plant to treat

Condemn

- Dead, dying, diseased, disabled
- FSIS tag

- Humanely killed (out of plant)
- Ensure proper disposition:
 - a. denature/off premise rendering
 - b. on premise rendering (animals for slaughter)

Holding

Pens