

# TELEPHONE SUBSCRIBERSHIP IN THE UNITED STATES

(Data Through March 1998)

ALEXANDER BELINFANTE

Industry Analysis Division  
Common Carrier Bureau  
Federal Communications Commission

Released: July 1998



The number and percentage of households that have telephone service represent the most basic measures of the extent of universal service. Continuing analysis of telephone penetration statistics allows us to examine the aggregate effects of Commission actions on households' decisions to maintain, acquire or drop telephone service. This report presents comprehensive data on telephone penetration statistics collected by the Bureau of the Census under contract with the Federal Communications Commission. Along with telephone penetration statistics for the United States and each of the states from November 1983 to March 1998, data are provided on penetration based on various demographic characteristics.

The most widely used measure of telephone subscribership is the percentage of households with telephone service -- sometimes called a measure of telephone penetration. Prior to the 1980s, precise measurements of telephone subscribership received little attention. Traditionally, telephone penetration was measured by dividing the number of residential telephone lines by the number of households. Measures of penetration based on the number of residential lines, however, became subject to a large margin of error as more households added second telephone lines and more consumers acquired second homes. By 1980, the traditional penetration measure (residential lines divided by the number of households) reached 96%, while the number of households reporting that they had telephones in the 1980 census was 92.9%.

Recognizing the need for precise periodic measurements of subscribership, the Commission requested that the Bureau of the Census include questions on telephones as part of its Current Population Survey (CPS), which monitors demographic trends between the decennial censuses. This survey is a staggered panel survey in which the people residing at particular addresses are included for four consecutive months in one year and the same four months in the following year. Use of the Current Population Survey has several advantages -- it is conducted every month by an independent and expert agency, the sample is large and the questions are consistent. Thus, changes in the results can be compared over time with a great deal of confidence.

Unfortunately, the results of the CPS cannot be directly compared with the penetration figures contained in the 1980 and 1990 decennial censuses. This is due to differences in sampling and survey methodologies and because of differences in the context in which the questions were asked. The 1990 decennial census reported 94.8% of all households in the United States had telephones, whereas the CPS data showed a penetration rate of 93.3% for 1990. This difference is statistically significant and appears to indicate that the CPS value may be on the low side and the decennial census value may be on the high side, with the truth lying somewhere in between.

The specific questions asked in the CPS are: "Is there a telephone in this house/apartment?" and, if the answer to the first question is "no," this is followed up with, "Is there a telephone elsewhere on which people in this household can be called?" If the answer to the first question is "yes," the household is counted as having a telephone "in unit." If the answer to either the first or second question is "yes," the household is counted as having a telephone "available." Although the survey is conducted every month, not all questions are asked every month. The telephone questions are asked once every four months, in the month that a household is first included in the sample and

in the month that the household re-enters the sample a year later. Since the sample is staggered, the reported information for any given month actually reflects responses over the preceding four months. Aggregated summaries of the responses are reported to the Commission, based on the surveys conducted through March, July, and November of each year. These reports are generally released a couple of months after the final month of each four-month survey period.

The Census Bureau data are based on a nationwide sample of about 48,000 households in the 50 states and the District of Columbia. (The CPS does not cover outlying areas that are not states, such as Puerto Rico, the Virgin Islands, the Northern Mariana Islands, and Guam.) Because a sample is used, the estimates are subject to sampling error. For the nationwide totals, changes in telephone penetration between consecutive reports of less than or equal to 0.5% may be due to sampling error and cannot be regarded as statistically significant. As explained below, when comparing the same month in two consecutive years, changes of less than or equal to 0.4% are not statistically significant. When comparing annual averages, changes of less than 0.3% are not statistically significant. The annual averages are the average of the three surveys of the year in question. For individual states or other subgroups of the U.S. population, the amount of sampling variability is much greater, because the sample sizes are smaller.

The data in this report are not seasonally adjusted. Seasonal analysis of the data indicates that, for the nation as a whole, there is no significant seasonal variation in these data.

Census Bureau figures for March 1998, the most recent data available, show that the percentage of households subscribing to telephone service is 94.1%, which is up 0.2% from March 1997. This difference is not statistically significant. As a result of an increasing number of households and a higher penetration rate, 1.6 million households were added to the nation's telephone system between March 1997 and March 1998.

This report includes figures showing subscribership percentages by state, by householder's age and race, by household size, by income, and for individual adults by labor force status. The March 1998 data show that 95.1% of individual adults in the civilian non-institutionalized population have a telephone in their household. This figure is up 0.3% from the March 1997 level. This difference is not statistically significant.

This report contains twelve tables and eight charts presenting penetration statistics for various geographic and demographic characteristics. The charts and the first two tables present summaries of the available information. Tables 3 through 7 present more detailed information. In these tables, only the annual averages are included for the years 1984 through 1995. March, July, and November data for those years are available in previous subscribership reports or Monitoring Reports in CC Docket No. 87-339. Tables 8 through 12 provide information necessary to determine the statistical significance of changes in the penetration rates over time.

Table 1 summarizes the telephone penetration for the United States, combining information on the number of households with the penetration rates.

Chart 1 depicts the nationwide penetration rates for households graphically over time.

Table 2 summarizes the telephone penetration rates by state, showing the November 1983 and March 1998 values, the change between those two months, and an indication as to whether that change is statistically significant. The statistical significance of a change is determined not only by the magnitude of that change, but also by the sizes of the samples used to estimate the change.

Chart 2 depicts the states with March 1998 penetration rates more than 1% below the national average, within 1% of the national average, or more than 1% above the national average.

Chart 3 depicts changes in household penetration rates by state between the November 1983 and March 1998 values. States with statistically significant increases or decreases are shown, along with other states with increases or decreases.

Chart 4 depicts the relationship between telephone penetration and household income, using March 1998 penetration rates, for all households, and for households headed by white, black, and Hispanic persons.

Chart 5 depicts the relationship between telephone penetration and household size, using March 1998 penetration rates, for all households, and for households headed by white, black, and Hispanic persons.

Chart 6 depicts the relationship between telephone penetration and householder's age, using March 1998 penetration rates, for all households, and for households headed by white, black, and Hispanic persons.

Chart 7 depicts the relationship between telephone penetration and labor force status for civilian non-institutionalized adults, using March 1998 penetration rates, for all households, and for white, black, and Hispanic persons.

Chart 8 depicts the nationwide penetration rates for civilian non-institutionalized adults graphically over time.

Table 3 shows the Current Population Survey responses for the United States and for each state beginning with November 1983. Because the Current Population Survey began collecting this data only in 1983, comparable values are not available prior to November 1983. For each of the surveys, the column headed "Unit" indicates the percentage of households for which there is a telephone in the housing unit. The column headed "Avail." indicates the percentage of households which have telephone service available for incoming calls, either in the housing unit or elsewhere.

Table 4 shows the nationwide penetration rates for households by income and the race of the householder. It shows a strong relationship between income and penetration. Caution should be taken in comparing these figures over time, because these income levels are not adjusted for inflation.

Thus, the same nominal income level at two points in time will reflect different real incomes in terms of purchasing power. Also, the income categories have changed over time due to the changing value of the dollar.

Table 5 shows the nationwide penetration rates for households by the size of the household and the race of the householder. It shows that penetration is higher for households of 2 to 5 people than it is for single-person households or those with 6 or more people.

Table 6 shows the nationwide penetration rates for households by the age and race of the householder. It shows that the penetration rate is lowest for young and non-white households.

Table 7 shows the nationwide penetration rates for all persons that are at least 15 years old in the civilian non-institutionalized population by their race and employment status. Since this table is for individual adults rather than households, the total penetration rates are different from those in the previous tables. It shows that penetration is lowest among the unemployed.

Tables 8 through 12 present the critical values at the 95% confidence level for testing the statistical significance of changes over time in the earlier tables. These critical values are relevant because changes less than or equal to the values shown are likely to be due to sampling error and thus cannot be regarded as demonstrating that a change in telephone penetration has occurred. In some cases these critical values are very large because the sample sizes are very small for these subcategories, rendering the estimated penetration rates unreliable. Because there is an overlap of half of the sample from year to year, but no overlap in the sample between surveys that are four months apart, annual changes are less subject to variations in sampling error. Consequently, the critical values should be multiplied by 0.8 when making a comparison for the same month in two consecutive years. When comparing the annual averages, the critical values should be multiplied by 0.5774, since these averages are based on three surveys and hence have a lower standard error. When comparing annual averages of two consecutive years, the critical values should be multiplied by .46, taking into account both of the above factors.

Table 1

## Household Telephone Subscribership in the United States

Date	Households (millions)	Households with Telephones (millions)	Percentage with Telephones	Households without Telephones (millions)	Percentage without Telephones
November 1983	85.8	78.4	91.4%	7.4	8.6%
March 1984	86.0	78.9	91.8%	7.1	8.2%
July 1984	86.6	79.3	91.6%	7.3	8.4%
November 1984	87.4	79.9	91.4%	7.5	8.6%
March 1985	87.4	80.2	91.8%	7.2	8.2%
July 1985	88.2	81.0	91.8%	7.2	8.2%
November 1985	88.8	81.6	91.9%	7.2	8.1%
March 1986	89.0	82.1	92.2%	6.9	7.8%
July 1986	89.5	82.5	92.2%	7.0	7.8%
November 1986	89.9	83.1	92.4%	6.8	7.6%
March 1987	90.2	83.4	92.5%	6.8	7.5%
July 1987	90.7	83.7	92.3%	7.0	7.7%
November 1987	91.3	84.3	92.3%	7.0	7.7%
March 1988	91.8	85.3	92.9%	6.5	7.1%
July 1988	92.4	85.7	92.8%	6.7	7.2%
November 1988	92.6	85.7	92.5%	6.9	7.5%
March 1989	93.6	87.0	93.0%	6.6	7.0%
July 1989	93.8	87.5	93.3%	6.3	6.7%
November 1989	93.9	87.3	93.0%	6.6	7.0%
March 1990	94.2	87.9	93.3%	6.3	6.7%
July 1990	94.8	88.4	93.3%	6.4	6.7%
November 1990	94.7	88.4	93.3%	6.3	6.7%
March 1991	95.3	89.2	93.6%	6.1	6.4%
July 1991	95.5	89.1	93.3%	6.4	6.7%
November 1991	95.7	89.4	93.4%	6.3	6.6%
March 1992	96.6	90.7	93.9%	5.9	6.1%
July 1992	96.6	90.6	93.8%	6.0	6.2%
November 1992	97.0	91.0	93.8%	6.0	6.2%
March 1993	97.3	91.6	94.2%	5.7	5.8%
July 1993	97.9	92.2	94.2%	5.7	5.8%
November 1993	98.8	93.0	94.2%	5.8	5.8%
March 1994	98.1	92.1	93.9%	6.0	6.1%
July 1994	98.6	92.4	93.7%	6.2	6.3%
November 1994	99.8	93.7	93.8%	6.2	6.2%
March 1995	99.9	93.8	93.9%	6.1	6.1%
July 1995	100.0	94.0	94.0%	6.0	6.0%
November 1995	100.4	94.2	93.9%	6.2	6.1%
March 1996	100.6	94.4	93.8%	6.2	6.2%
July 1996	101.2	95.0	93.9%	6.1	6.1%
November 1996	101.3	95.1	93.9%	6.2	6.1%
March 1997	102.0	95.8	93.9%	6.2	6.1%
July 1997	102.3	96.1	93.9%	6.2	6.1%
November 1997	102.8	96.5	93.8%	6.3	6.2%
March 1998	103.4	97.4	94.1%	6.1	5.9%

Details may not appear to add to totals due to rounding.

Chart 1

# Telephone Penetration

Households

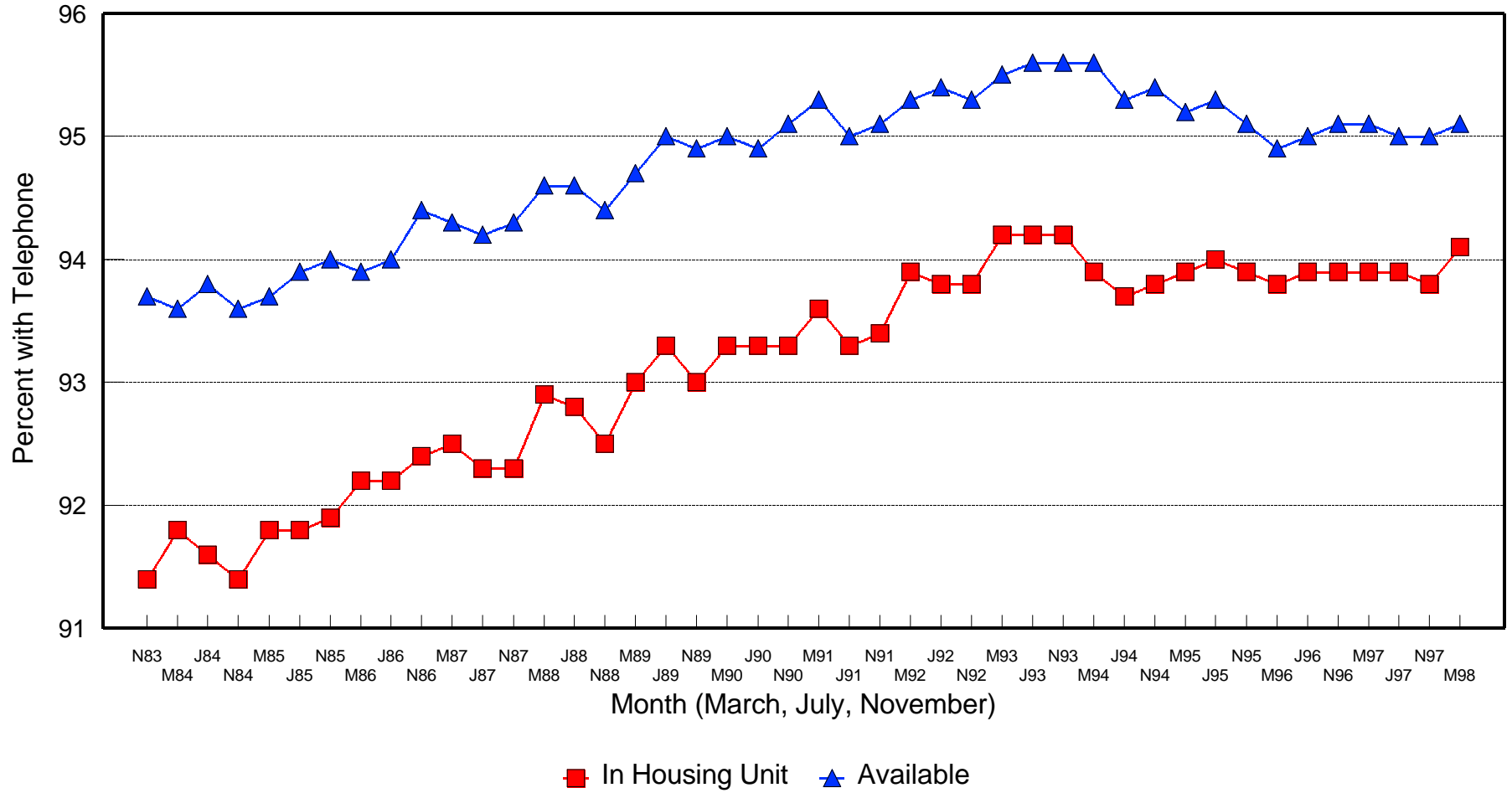


Table 2

Telephone Penetration by State  
(Percentage of Households with Telephone Service)

State	November 1983	March 1998	Change	
Alabama	87.9 %	93.5 %	5.6 %	*
Alaska	83.8	92.3	8.5	*
Arizona	88.8	91.9	3.1	
Arkansas	88.2	86.6	-1.5	
California	91.7	94.9	3.2	*
Colorado	94.4	93.9	-0.5	
Connecticut	95.5	92.7	-2.8	**
Delaware	95.0	97.2	2.2	
District of Columbia	94.7	91.6	-3.1	
Florida	85.5	93.3	7.8	*
Georgia	88.9	89.9	1.0	
Hawaii	94.6	95.1	0.6	
Idaho	89.5	92.7	3.3	
Illinois	95.0	92.7	-2.3	**
Indiana	90.3	93.8	3.4	*
Iowa	95.4	96.6	1.2	
Kansas	94.9	95.4	0.5	
Kentucky	86.9	94.1	7.2	*
Louisiana	88.9	93.5	4.6	*
Maine	90.7	95.8	5.0	*
Maryland	96.3	96.1	-0.2	
Massachusetts	94.3	94.0	-0.3	
Michigan	93.8	95.1	1.3	
Minnesota	96.4	97.4	1.1	
Mississippi	82.4	89.1	6.7	*
Missouri	92.1	95.0	2.9	
Montana	92.8	93.2	0.4	
Nebraska	94.0	95.7	1.7	
Nevada	89.4	93.0	3.6	
New Hampshire	95.0	95.3	0.4	
New Jersey	94.1	95.7	1.6	
New Mexico	85.3	88.2	2.8	
New York	90.8	95.2	4.4	*
North Carolina	89.3	93.2	3.8	
North Dakota	95.1	96.5	1.4	
Ohio	92.2	95.9	3.7	*
Oklahoma	91.5	90.4	-1.1	
Oregon	91.2	95.6	4.4	*
Pennsylvania	95.1	96.9	1.8	*
Rhode Island	93.3	96.0	2.7	
South Carolina	81.8	92.3	10.5	*
South Dakota	92.7	88.9	-3.8	**
Tennessee	87.6	93.9	6.3	*
Texas	89.0	92.9	3.9	*
Utah	90.3	98.3	8.0	*
Vermont	92.7	95.7	2.9	
Virginia	93.1	94.9	1.8	
Washington	92.5	94.8	2.3	
West Virginia	88.1	93.8	5.6	*
Wisconsin	94.8	94.9	0.1	
Wyoming	89.7	92.5	2.8	
Total United States	91.4	94.1	2.7	*

\* Increase is statistically significant at the 95% confidence level.

\*\* Decrease is statistically significant at the 95% confidence level.

Differences may not appear to equal changes due to rounding.



Chart 2

# March 1998 Telephone Penetration

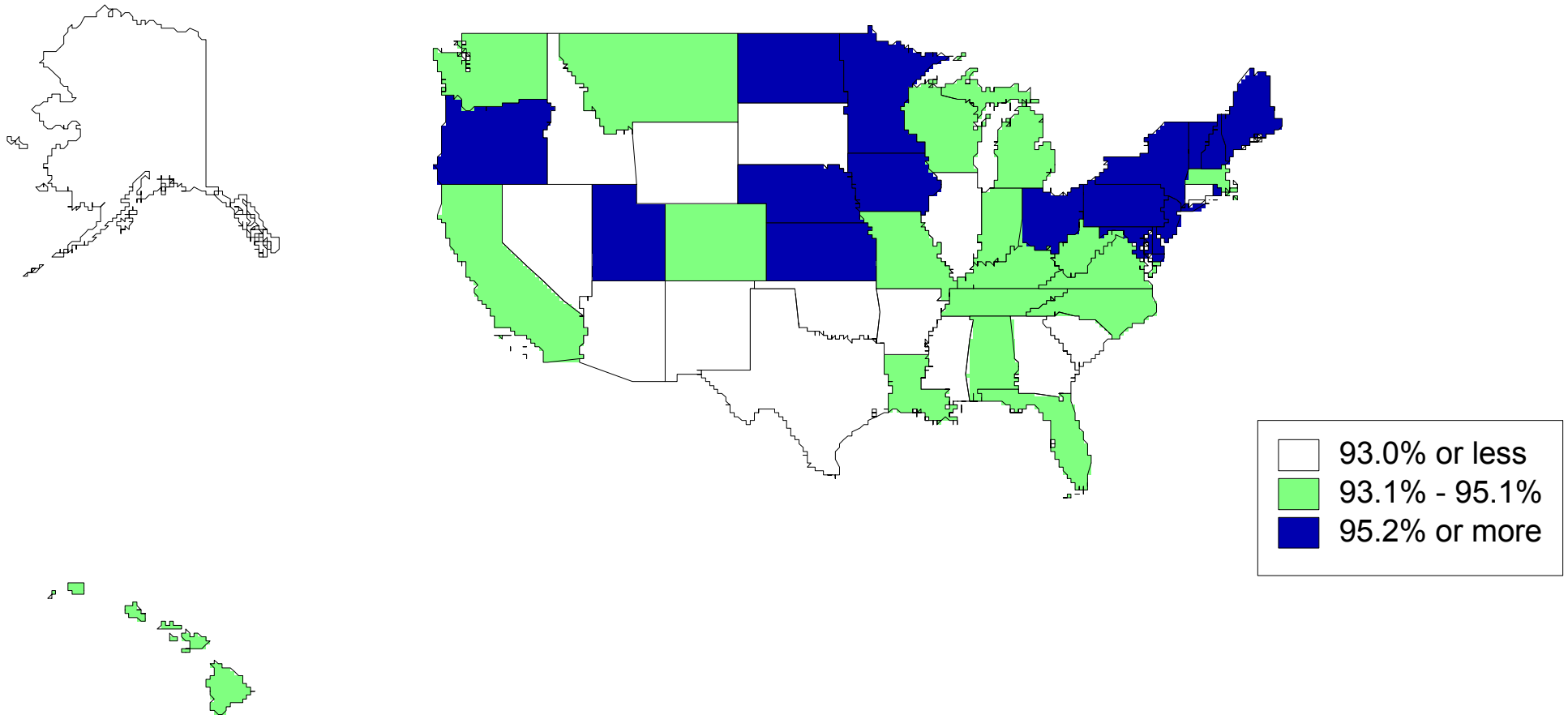




Chart 4

### Telephone Penetration by Income Level

March 1998

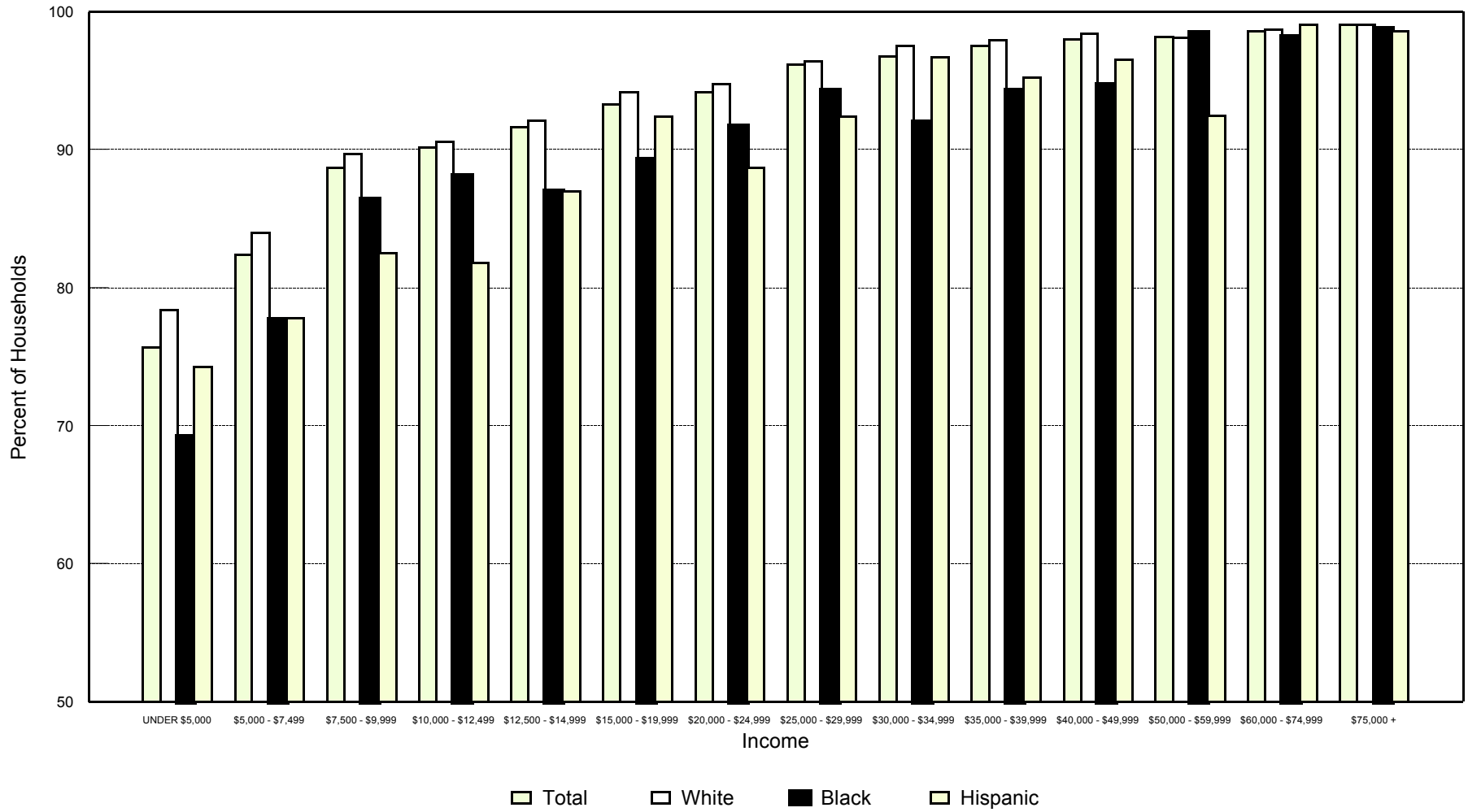


Chart 5

### Telephone Penetration by Household Size

March 1998

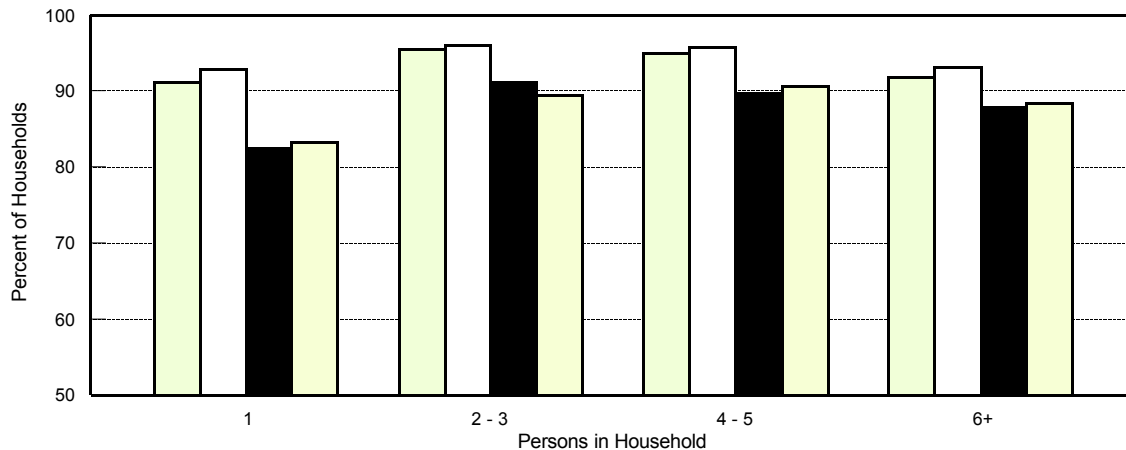


Chart 6

### Telephone Penetration by Householder's Age

March 1998

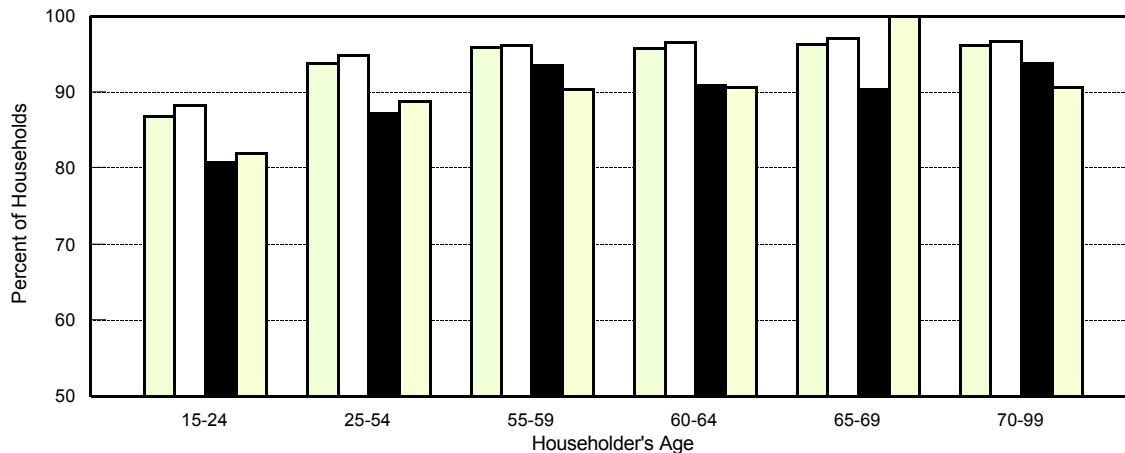


Chart 7

### Telephone Penetration by Labor Force Status

March 1998

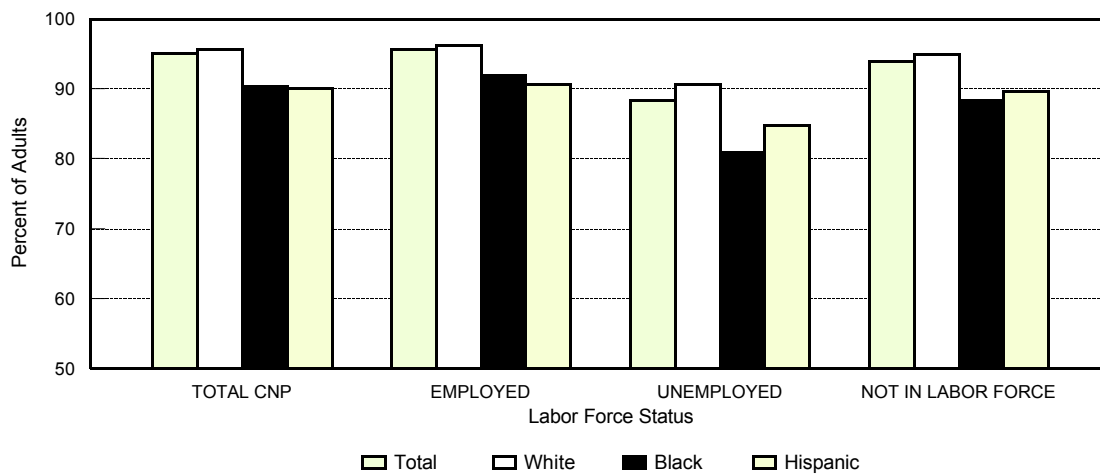


Chart 8

# Telephone Penetration

Civilian Noninstitutionalized Adults

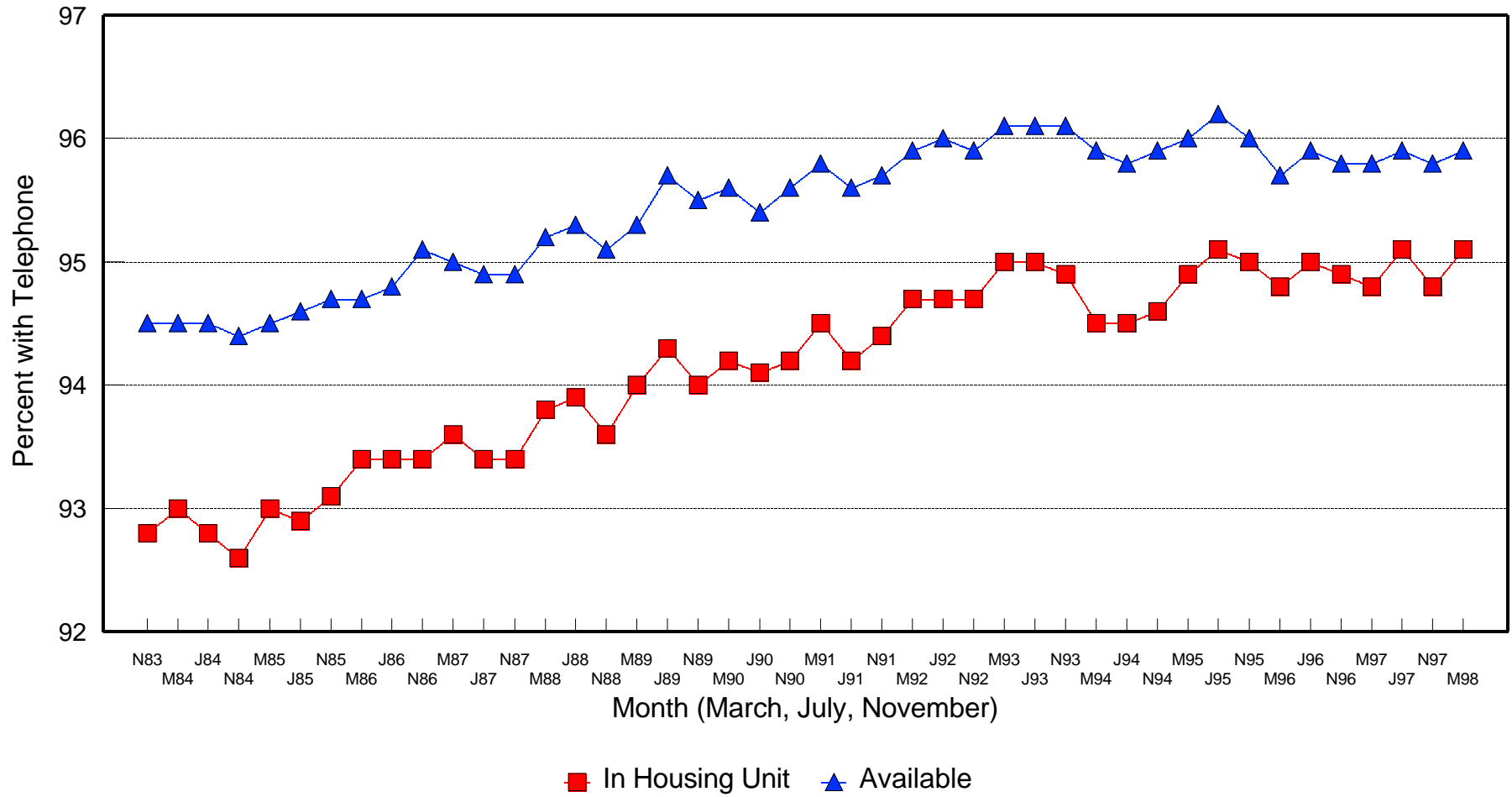


TABLE 3 - PERCENTAGE OF HOUSEHOLDS WITH A TELEPHONE BY STATE

	1983		1984		1985		1986	
	NOVEMBER Unit	Avail	ANNUAL AVERAGE Unit	Avail	ANNUAL AVERAGE Unit	Avail	ANNUAL AVERAGE Unit	Avail
<b>UNITED STATES</b>	91.4	93.7	91.6	93.7	91.8	93.9	92.3	94.1
ALABAMA	87.9	90.2	88.4	90.5	89.1	91.0	88.7	90.4
ALASKA	83.8	88.8	86.5	89.0	87.1	89.5	86.4	88.9
ARIZONA	88.8	90.7	86.9	89.4	87.3	89.6	89.4	90.9
ARKANSAS	88.2	91.4	86.6	90.6	85.9	89.9	86.4	90.4
CALIFORNIA	91.7	93.5	92.5	93.8	92.9	94.1	93.0	94.0
COLORADO	94.4	96.5	93.2	95.4	94.3	96.2	94.1	96.0
CONNECTICUT	95.5	98.4	95.5	97.0	96.2	97.6	97.0	97.9
DELAWARE	95.0	96.6	94.3	95.7	94.8	96.2	94.7	96.3
DIST OF COLUMBIA	94.7	95.6	94.9	96.3	93.6	95.2	92.2	94.0
FLORIDA	85.5	89.9	88.7	91.3	89.6	91.7	90.0	92.5
GEORGIA	88.9	92.1	86.2	89.1	87.6	89.7	88.4	91.0
HAWAII	94.6	96.4	93.5	94.9	93.0	95.0	92.2	94.4
IDAHO	89.5	92.2	90.7	91.7	91.8	93.1	91.5	93.1
ILLINOIS	95.0	95.9	94.2	95.8	93.7	95.3	93.6	95.2
INDIANA	90.3	93.5	91.6	93.6	92.3	94.7	92.2	94.3
IOWA	95.4	97.2	96.2	97.4	95.1	96.4	95.7	96.5
KANSAS	94.9	96.7	94.3	95.8	94.4	96.4	94.6	96.1
KENTUCKY	86.9	90.9	88.1	91.0	87.4	91.1	86.2	90.6
LOUISIANA	88.9	93.3	89.7	92.7	90.3	93.6	88.7	91.9
MAINE	90.7	93.1	93.4	95.3	94.0	95.6	93.4	95.4
MARYLAND	96.3	96.7	95.7	96.5	95.5	96.7	95.7	96.7
MASSACHUSETTS	94.3	95.9	95.9	96.9	95.2	96.3	96.4	97.1
MICHIGAN	93.8	94.9	92.8	94.5	92.9	94.2	93.4	94.5
MINNESOTA	96.4	97.5	95.8	97.1	96.4	97.4	96.2	97.2
MISSISSIPPI	82.4	89.1	82.4	87.5	80.9	87.6	80.1	87.3
MISSOURI	92.1	94.1	91.5	93.7	92.5	94.8	93.4	94.9
MONTANA	92.8	94.5	91.0	94.0	91.4	93.9	90.9	93.7
NEBRASKA	94.0	95.3	95.7	96.8	95.3	96.6	95.6	96.8
NEVADA	89.4	91.9	90.4	92.8	91.8	93.8	92.4	93.7
NEW HAMPSHIRE	95.0	96.9	94.3	95.8	93.2	94.6	94.0	95.0
NEW JERSEY	94.1	95.1	94.8	96.1	94.9	96.2	94.9	96.1
NEW MEXICO	85.3	90.9	82.0	87.0	84.1	88.2	85.1	89.1
NEW YORK	90.8	92.2	91.8	93.6	92.1	93.6	93.2	94.3
NORTH CAROLINA	89.3	92.9	88.3	91.9	89.4	92.4	90.2	92.5
NORTH DAKOTA	95.1	97.3	94.6	96.8	95.3	96.7	96.1	97.0
OHIO	92.2	93.9	92.4	94.4	92.2	94.5	93.1	94.4
OKLAHOMA	91.5	93.7	90.3	92.5	88.8	91.7	90.4	93.0
OREGON	91.2	93.5	90.6	92.3	90.3	92.1	92.7	94.3
PENNSYLVANIA	95.1	97.1	94.9	96.5	95.3	96.6	96.3	97.4
RHODE ISLAND	93.3	94.6	93.6	94.6	94.0	95.1	95.9	96.8
SOUTH CAROLINA	81.8	84.9	83.7	87.7	86.8	90.5	86.3	90.6
SOUTH DAKOTA	92.7	95.0	93.2	94.9	92.6	94.5	92.6	94.2
TENNESSEE	87.6	92.6	88.5	92.0	89.3	92.6	89.6	93.6
TEXAS	89.0	92.6	88.4	91.6	88.1	91.6	88.9	91.9
UTAH	90.3	92.2	92.5	94.2	93.9	95.1	93.0	93.9
VERMONT	92.7	94.3	92.3	94.0	92.9	94.1	93.8	95.6
VIRGINIA	93.1	94.7	93.1	95.1	91.7	93.8	92.1	94.1
WASHINGTON	92.5	93.7	93.0	94.4	94.7	96.2	94.6	96.3
WEST VIRGINIA	88.1	91.1	87.7	91.8	87.6	91.7	88.2	91.9
WISCONSIN	94.8	96.1	95.2	96.6	94.1	95.4	95.1	95.9
WYOMING	89.7	93.3	89.9	92.8	93.4	94.9	92.1	95.1

TABLE 3 - PERCENTAGE OF HOUSEHOLDS WITH A TELEPHONE BY STATE

	1987		1988		1989		1990	
	ANNUAL AVERAGE		ANNUAL AVERAGE		ANNUAL AVERAGE		ANNUAL AVERAGE	
	Unit	Avail	Unit	Avail	Unit	Avail	Unit	Avail
<b>UNITED STATES</b>	92.4	94.2	92.7	94.5	93.1	94.9	93.3	95.0
ALABAMA	87.5	89.6	87.3	89.6	89.0	91.3	89.5	91.1
ALASKA	87.8	90.2	87.6	89.9	86.8	89.9	89.3	92.6
ARIZONA	88.6	90.7	90.6	92.3	91.6	93.2	93.0	95.1
ARKANSAS	86.3	90.7	86.1	90.2	87.5	91.0	88.7	91.9
CALIFORNIA	93.8	95.0	94.4	95.5	94.9	96.0	94.6	95.5
COLORADO	92.9	95.5	93.8	95.4	94.6	96.0	94.7	96.3
CONNECTICUT	97.0	98.0	96.3	98.9	98.1	98.5	97.1	97.7
DELAWARE	96.5	97.3	97.0	97.9	96.6	97.5	96.0	97.1
DIST OF COLUMBIA	92.4	94.2	94.6	95.9	92.7	94.8	91.4	93.2
FLORIDA	91.7	93.8	92.7	94.5	92.9	94.5	93.0	94.9
GEORGIA	88.7	91.3	90.1	92.4	90.2	92.9	90.9	93.4
HAWAII	94.2	96.6	94.5	96.3	95.1	96.9	95.3	96.8
IDAHO	91.1	92.5	92.2	93.3	92.5	93.6	92.8	94.1
ILLINOIS	93.7	95.2	94.2	95.6	93.9	95.4	94.3	95.7
INDIANA	91.2	93.2	92.3	94.9	93.2	95.9	92.8	95.9
IOWA	95.1	96.3	95.4	96.9	96.3	97.5	96.1	96.9
KANSAS	95.2	96.6	94.4	95.7	94.4	95.8	95.4	96.5
KENTUCKY	86.5	90.6	87.5	90.9	88.9	92.7	89.1	93.3
LOUISIANA	87.5	90.8	87.3	91.1	88.6	91.3	89.4	92.0
MAINE	93.5	95.2	94.2	95.9	95.3	96.4	95.7	97.6
MARYLAND	95.4	96.6	95.9	97.2	95.0	96.6	95.4	96.7
MASSACHUSETTS	96.4	97.0	96.9	97.3	97.1	97.8	96.6	97.4
MICHIGAN	93.7	94.8	93.9	95.0	93.7	94.9	94.1	95.5
MINNESOTA	96.0	97.4	97.2	98.4	96.8	97.8	96.9	98.1
MISSISSIPPI	81.5	86.3	83.3	88.6	85.5	90.3	87.0	90.9
MISSOURI	93.0	95.3	93.5	95.6	91.0	93.4	92.0	95.3
MONTANA	90.9	93.9	91.7	94.2	91.7	94.3	92.0	94.2
NEBRASKA	94.6	96.1	95.4	96.1	95.2	96.3	96.2	97.1
NEVADA	92.4	93.7	92.4	93.4	92.7	93.3	92.6	93.6
NEW HAMPSHIRE	94.1	96.2	95.2	96.1	95.4	97.1	95.0	96.5
NEW JERSEY	95.0	96.3	94.4	95.9	94.8	96.1	94.7	95.9
NEW MEXICO	86.0	89.3	85.7	89.1	85.8	89.6	85.8	89.5
NEW YORK	92.7	94.2	92.4	94.0	92.3	94.0	91.1	92.8
NORTH CAROLINA	89.2	91.7	90.4	92.8	91.9	94.1	91.9	94.2
NORTH DAKOTA	96.8	97.4	96.8	97.5	97.0	98.0	97.0	97.9
OHIO	93.4	94.7	94.4	95.2	94.6	95.5	95.2	96.3
OKLAHOMA	88.7	91.8	88.9	91.6	88.2	91.2	89.5	92.7
OREGON	93.3	94.8	92.0	93.5	92.3	93.9	94.5	95.9
PENNSYLVANIA	96.4	97.3	96.2	97.1	97.0	97.5	96.9	97.6
RHODE ISLAND	95.2	96.3	95.4	96.5	95.4	96.3	95.6	96.5
SOUTH CAROLINA	87.7	90.6	88.5	91.4	87.8	90.8	90.2	93.2
SOUTH DAKOTA	92.8	95.0	92.9	95.4	93.3	95.0	93.4	95.3
TENNESSEE	89.2	92.6	90.3	93.5	91.9	95.1	91.6	94.1
TEXAS	89.5	92.2	88.5	91.3	88.8	91.6	89.4	92.0
UTAH	92.3	94.6	92.5	94.5	95.9	96.5	95.6	96.3
VERMONT	95.3	96.9	95.6	96.8	93.9	95.7	94.9	96.9
VIRGINIA	92.5	94.6	92.9	95.5	93.2	95.7	93.0	94.9
WASHINGTON	94.3	96.4	94.3	95.7	96.4	97.3	97.1	97.7
WEST VIRGINIA	87.8	91.5	87.3	91.4	86.8	90.3	87.6	91.7
WISCONSIN	96.4	97.1	97.0	98.0	97.3	98.4	96.9	97.7
WYOMING	92.3	94.1	93.0	94.4	93.6	95.5	94.1	95.9

TABLE 3 - PERCENTAGE OF HOUSEHOLDS WITH A TELEPHONE BY STATE

	1991		1992		1993		1994	
	ANNUAL AVERAGE		ANNUAL AVERAGE		ANNUAL AVERAGE		ANNUAL AVERAGE	
	Unit	Avail	Unit	Avail	Unit	Avail	Unit	Avail
<b>UNITED STATES</b>	93.4	95.1	93.8	95.3	94.2	95.6	93.8	95.4
ALABAMA	91.4	93.3	90.8	93.2	91.9	94.3	91.3	94.3
ALASKA	90.8	93.5	91.7	94.4	89.9	93.8	91.8	94.6
ARIZONA	93.4	94.9	93.3	94.7	93.3	94.4	93.9	95.3
ARKANSAS	87.6	91.4	87.3	91.0	87.8	91.0	90.2	93.5
CALIFORNIA	95.0	95.9	95.6	96.5	95.8	96.7	94.8	95.7
COLORADO	95.4	97.0	95.5	96.3	96.1	96.5	96.7	97.7
CONNECTICUT	96.2	97.3	96.6	97.3	96.7	97.5	96.5	97.5
DELAWARE	96.4	97.5	96.5	97.8	96.5	96.8	95.5	97.1
DIST OF COLUMBIA	90.9	92.6	88.7	90.5	90.2	91.7	90.0	91.2
FLORIDA	93.3	95.0	93.5	95.1	93.8	95.1	93.5	94.9
GEORGIA	89.9	91.7	90.2	91.9	93.2	94.2	91.1	93.2
HAWAII	95.1	96.4	95.3	96.8	94.4	96.3	94.3	96.1
IDAHO	92.0	93.6	93.0	94.7	94.4	95.7	94.7	96.2
ILLINOIS	93.8	95.6	93.8	95.5	93.6	95.3	93.6	95.2
INDIANA	92.2	94.6	91.9	93.2	93.7	95.1	93.6	94.8
IOWA	95.6	97.4	95.4	97.4	96.4	97.4	96.8	98.0
KANSAS	94.5	95.7	95.2	96.6	95.6	96.3	94.7	96.2
KENTUCKY	88.1	92.9	89.6	92.6	89.8	93.1	91.2	93.8
LOUISIANA	91.1	93.9	91.7	93.9	90.4	92.2	91.4	93.9
MAINE	94.4	96.6	93.2	95.3	96.0	98.1	96.0	97.8
MARYLAND	96.3	97.2	96.0	97.4	96.7	97.9	95.6	96.6
MASSACHUSETTS	96.4	97.4	96.8	97.5	96.9	97.9	96.5	97.1
MICHIGAN	94.1	95.5	94.4	95.5	95.6	96.5	95.0	96.6
MINNESOTA	97.1	97.9	96.7	98.1	96.1	97.3	95.6	97.2
MISSISSIPPI	86.0	90.9	86.3	90.4	87.2	90.6	88.6	92.5
MISSOURI	93.6	95.2	94.0	96.0	93.1	95.3	93.8	96.0
MONTANA	92.5	94.4	93.2	95.7	94.6	96.3	93.9	95.5
NEBRASKA	95.9	96.4	96.4	97.1	96.6	97.2	96.7	98.0
NEVADA	93.3	94.5	93.7	94.6	95.4	95.9	93.0	93.5
NEW HAMPSHIRE	96.2	97.5	95.4	96.4	96.0	96.9	96.4	97.3
NEW JERSEY	93.6	95.2	94.4	95.3	94.3	95.1	92.9	94.1
NEW MEXICO	87.1	89.9	88.4	90.9	90.2	93.3	88.3	91.2
NEW YORK	91.9	93.4	93.4	94.5	93.5	94.8	93.1	94.4
NORTH CAROLINA	91.8	94.2	92.5	94.5	92.7	94.6	92.6	95.2
NORTH DAKOTA	96.3	97.6	95.8	97.1	97.1	98.0	96.5	97.7
OHIO	94.5	95.8	94.6	95.6	94.9	96.0	94.8	96.0
OKLAHOMA	89.3	91.9	90.9	93.1	92.1	94.0	91.8	93.6
OREGON	94.7	95.4	93.9	94.7	94.8	95.7	96.1	97.0
PENNSYLVANIA	96.8	97.8	96.9	97.7	97.3	98.0	97.0	98.0
RHODE ISLAND	94.7	96.3	94.8	96.0	95.5	96.7	95.9	97.3
SOUTH CAROLINA	90.0	93.3	89.2	92.9	89.8	91.9	89.4	92.3
SOUTH DAKOTA	93.7	95.7	94.1	95.6	93.7	95.4	94.7	96.1
TENNESSEE	92.2	94.6	93.1	95.2	92.0	93.9	93.1	95.6
TEXAS	91.1	93.6	91.5	94.2	91.6	94.3	90.8	93.2
UTAH	96.2	97.0	95.9	96.5	96.0	96.8	95.7	97.1
VERMONT	94.4	96.5	94.2	95.6	94.6	95.9	94.6	96.3
VIRGINIA	92.6	94.7	94.8	96.4	94.3	95.9	94.8	96.7
WASHINGTON	96.8	97.3	96.0	96.9	96.8	98.0	96.0	97.2
WEST VIRGINIA	89.0	93.0	89.3	92.6	90.6	93.6	90.8	94.2
WISCONSIN	96.5	97.5	97.0	97.7	96.9	97.6	96.1	97.6
WYOMING	94.6	96.3	92.7	94.9	93.9	95.7	93.5	95.5



TABLE 3 - PERCENTAGE OF HOUSEHOLDS WITH A TELEPHONE BY STATE

	1995		1996					
	ANNUAL AVERAGE		MARCH		JULY		NOVEMBER	
	Unit	Avail	Unit	Avail	Unit	Avail	Unit	Avail
<b>UNITED STATES</b>	93.9	95.2	93.8	94.9	93.9	95.0	93.9	95.1
ALABAMA	92.2	94.0	91.7	93.4	92.0	93.6	92.8	94.8
ALASKA	93.6	95.6	95.4	96.0	93.3	94.3	94.6	96.0
ARIZONA	93.8	95.1	92.7	93.8	93.8	94.4	92.8	94.2
ARKANSAS	89.4	92.5	85.9	88.9	87.3	89.7	87.4	90.5
CALIFORNIA	94.5	95.3	94.9	95.7	95.1	95.5	95.1	95.7
COLORADO	96.6	97.2	96.4	96.9	94.8	95.8	95.2	96.5
CONNECTICUT	96.9	98.0	98.3	98.9	98.4	98.8	95.7	96.8
DELAWARE	96.2	96.8	95.0	96.5	97.3	97.5	95.9	97.2
DIST OF COLUMBIA	90.9	92.3	92.5	93.4	93.1	95.1	93.5	94.2
FLORIDA	93.9	94.8	93.3	94.3	93.3	94.7	92.6	93.5
GEORGIA	90.0	91.8	91.8	92.9	86.8	88.8	90.4	91.7
HAWAII	94.7	96.0	93.9	95.4	96.0	96.3	94.5	95.9
IDAHO	95.1	96.1	93.3	94.4	92.1	93.8	93.2	94.8
ILLINOIS	93.6	95.0	93.1	94.1	93.0	93.9	92.9	94.7
INDIANA	94.4	95.9	94.7	96.5	94.5	95.6	92.0	93.2
IOWA	96.4	97.6	95.8	95.9	98.0	98.4	96.0	96.5
KANSAS	93.9	95.0	93.6	95.0	94.3	95.4	93.8	95.1
KENTUCKY	92.1	94.2	91.2	92.9	92.8	93.3	93.0	93.7
LOUISIANA	92.6	95.3	90.4	92.3	91.6	94.2	91.3	93.3
MAINE	95.7	96.9	96.5	97.7	96.8	98.2	96.2	97.5
MARYLAND	96.4	96.8	96.3	97.1	96.5	96.9	97.3	97.5
MASSACHUSETTS	95.9	96.7	95.5	96.8	95.2	96.6	96.4	96.7
MICHIGAN	95.2	96.0	94.0	94.9	95.5	96.1	95.4	95.9
MINNESOTA	97.3	98.1	97.5	98.2	97.2	98.0	96.6	97.9
MISSISSIPPI	86.5	91.1	86.8	90.4	87.9	91.6	87.9	92.8
MISSOURI	94.4	95.7	96.2	97.4	94.8	95.7	95.0	97.0
MONTANA	94.2	95.3	94.1	95.4	94.6	95.9	94.1	95.3
NEBRASKA	97.1	97.8	96.0	97.0	95.8	96.4	96.2	97.3
NEVADA	92.6	93.6	94.0	94.7	92.7	93.3	93.8	94.4
NEW HAMPSHIRE	96.2	97.2	97.6	98.5	94.5	95.1	96.3	97.1
NEW JERSEY	92.3	93.2	92.8	93.4	92.8	93.8	95.2	97.1
NEW MEXICO	86.4	88.8	84.9	87.0	86.1	88.2	87.7	90.6
NEW YORK	92.9	93.9	93.1	94.0	93.2	93.8	94.0	95.0
NORTH CAROLINA	93.4	95.1	92.2	94.2	95.3	96.6	93.0	94.6
NORTH DAKOTA	97.2	97.9	96.2	96.7	96.9	97.3	95.8	96.2
OHIO	94.0	95.0	94.9	95.7	94.5	95.8	94.1	95.4
OKLAHOMA	91.5	92.9	90.6	92.1	92.4	93.4	90.9	92.4
OREGON	96.4	96.9	96.5	97.4	96.3	96.9	95.3	96.0
PENNSYLVANIA	96.8	97.5	97.1	97.7	96.9	97.5	96.7	97.3
RHODE ISLAND	96.0	97.4	95.6	96.3	95.3	95.7	96.2	97.0
SOUTH CAROLINA	90.5	92.3	92.0	94.3	91.3	94.6	90.6	92.0
SOUTH DAKOTA	94.3	95.9	93.1	94.1	94.2	95.1	92.7	94.4
TENNESSEE	93.0	95.5	93.4	95.3	94.1	96.4	94.4	96.8
TEXAS	91.3	93.3	90.8	92.1	91.4	93.0	90.9	92.6
UTAH	97.6	97.9	96.0	96.4	97.0	97.2	97.0	97.4
VERMONT	96.5	98.0	95.7	97.6	96.0	98.4	96.1	97.2
VIRGINIA	95.9	97.3	95.8	96.5	93.8	95.2	95.1	96.6
WASHINGTON	95.7	96.6	94.1	95.8	94.8	95.2	94.7	95.4
WEST VIRGINIA	92.7	94.9	93.0	94.7	93.1	94.8	92.6	95.6
WISCONSIN	97.3	97.7	96.8	97.8	96.9	97.8	97.3	97.6
WYOMING	94.1	95.5	95.1	95.4	95.3	95.8	94.7	95.9

TABLE 3 - PERCENTAGE OF HOUSEHOLDS WITH A TELEPHONE BY STATE

	1996		1997					
	ANNUAL AVERAGE		MARCH		JULY		NOVEMBER	
	Unit	Avail	Unit	Avail	Unit	Avail	Unit	Avail
<b>UNITED STATES</b>	93.9	95.0	93.9	95.1	93.9	95.0	93.8	95.0
ALABAMA	92.2	93.9	91.4	92.7	93.0	94.7	92.5	93.5
ALASKA	94.4	95.4	94.4	96.1	93.5	96.5	95.6	96.7
ARIZONA	93.1	94.1	89.5	91.6	93.4	94.6	92.0	93.3
ARKANSAS	86.9	89.7	88.7	90.9	90.8	92.0	89.8	92.5
CALIFORNIA	95.0	95.6	94.2	95.0	94.3	94.9	94.4	94.9
COLORADO	95.5	96.4	96.6	98.2	94.5	96.9	96.5	96.7
CONNECTICUT	97.5	98.2	95.5	96.1	93.8	94.3	93.2	94.1
DELAWARE	96.1	97.1	95.0	96.3	95.3	96.7	96.9	97.1
DIST OF COLUMBIA	93.0	94.2	91.3	92.1	91.7	93.2	89.4	91.6
FLORIDA	93.1	94.2	92.0	93.4	93.1	94.0	93.2	94.5
GEORGIA	89.7	91.1	90.4	91.5	93.1	93.7	92.4	93.7
HAWAII	94.8	95.9	94.7	96.6	94.6	95.5	94.1	94.6
IDAHO	92.9	94.3	95.2	95.8	92.6	93.5	94.2	94.7
ILLINOIS	93.0	94.2	93.5	95.0	93.1	94.1	90.0	92.0
INDIANA	93.7	95.1	94.2	95.4	93.6	94.5	93.6	95.4
IOWA	96.6	96.9	96.0	97.0	97.3	97.9	96.8	97.5
KANSAS	93.9	95.2	94.5	95.5	93.6	94.9	93.8	95.1
KENTUCKY	92.3	93.3	93.1	94.8	93.2	94.3	93.2	93.9
LOUISIANA	91.1	93.3	91.3	93.5	91.5	94.3	90.3	92.8
MAINE	96.5	97.8	93.6	95.1	97.4	98.1	97.4	98.6
MARYLAND	96.7	97.2	95.3	95.6	95.5	96.2	96.3	97.1
MASSACHUSETTS	95.7	96.7	95.9	96.9	95.7	96.8	94.6	95.3
MICHIGAN	95.0	95.6	94.9	95.6	93.3	94.2	94.6	95.8
MINNESOTA	97.1	98.0	97.4	98.4	96.4	97.6	97.0	98.1
MISSISSIPPI	87.5	91.6	89.3	92.9	89.8	92.9	88.5	93.7
MISSOURI	95.3	96.7	97.5	98.5	93.7	94.9	93.9	95.3
MONTANA	94.3	95.5	94.1	94.7	94.4	95.1	92.6	94.6
NEBRASKA	96.0	96.9	96.9	97.9	97.9	98.1	96.4	97.4
NEVADA	93.5	94.1	94.1	94.4	94.6	94.9	93.7	93.9
NEW HAMPSHIRE	96.1	96.9	97.1	97.5	95.5	97.1	96.9	97.5
NEW JERSEY	93.6	94.8	95.9	97.1	95.6	96.1	93.3	94.8
NEW MEXICO	86.2	88.6	86.4	89.5	90.7	92.7	87.2	90.3
NEW YORK	93.4	94.3	94.3	95.6	93.7	94.3	94.6	95.4
NORTH CAROLINA	93.5	95.1	93.5	94.8	93.2	94.3	92.6	93.6
NORTH DAKOTA	96.3	96.7	96.1	97.0	94.6	96.8	96.8	97.2
OHIO	94.5	95.6	94.9	95.8	94.3	95.2	94.5	94.9
OKLAHOMA	91.3	92.6	91.6	93.8	89.9	91.1	92.7	94.5
OREGON	96.0	96.8	95.6	96.1	95.2	96.1	96.1	96.6
PENNSYLVANIA	96.9	97.5	97.3	97.8	96.4	97.0	97.7	98.1
RHODE ISLAND	95.7	96.3	94.6	95.4	94.7	95.8	94.1	95.5
SOUTH CAROLINA	91.3	93.6	92.3	93.3	92.0	93.8	93.3	94.2
SOUTH DAKOTA	93.3	94.5	94.4	95.6	92.9	93.6	94.3	95.8
TENNESSEE	94.0	96.2	94.1	95.3	94.5	97.1	94.9	96.7
TEXAS	91.0	92.6	90.8	92.8	91.7	93.4	91.3	92.8
UTAH	96.7	97.0	97.4	98.0	96.3	97.2	97.1	97.8
VERMONT	95.9	97.7	93.8	95.7	96.7	97.6	94.8	96.8
VIRGINIA	94.9	96.1	93.5	94.9	94.6	95.3	95.5	96.8
WASHINGTON	94.5	95.5	95.9	96.8	96.6	97.5	95.1	96.4
WEST VIRGINIA	92.9	95.0	93.5	95.2	93.4	94.8	92.8	94.7
WISCONSIN	97.0	97.7	96.2	96.4	96.7	97.7	96.1	97.4
WYOMING	95.0	95.7	94.5	96.1	92.7	94.5	93.0	94.5

TABLE 3 - PERCENTAGE OF HOUSEHOLDS WITH A TELEPHONE BY STATE

	1997		1998	
	ANNUAL AVERAGE		MARCH	
	Unit	Avail	Unit	Avail
<b>UNITED STATES</b>	93.9	95.0	94.1	95.1
ALABAMA	92.3	93.6	93.5	94.4
ALASKA	94.5	96.4	92.3	94.5
ARIZONA	91.6	93.2	91.9	93.0
ARKANSAS	89.8	91.8	86.6	89.1
CALIFORNIA	94.3	94.9	94.9	95.4
COLORADO	95.9	97.3	93.9	95.2
CONNECTICUT	94.2	94.8	92.7	93.9
DELAWARE	95.7	96.7	97.2	97.6
DIST OF COLUMBIA	90.8	92.3	91.6	93.0
FLORIDA	92.8	94.0	93.3	94.0
GEORGIA	92.0	93.0	89.9	90.5
HAWAII	94.5	95.6	95.1	96.0
IDAHO	94.0	94.7	92.7	93.5
ILLINOIS	92.2	93.7	92.7	93.9
INDIANA	93.8	95.1	93.8	94.4
IOWA	96.7	97.5	96.6	97.7
KANSAS	94.0	95.2	95.4	96.2
KENTUCKY	93.2	94.3	94.1	96.0
LOUISIANA	91.0	93.5	93.5	94.2
MAINE	96.1	97.3	95.8	97.6
MARYLAND	95.7	96.3	96.1	96.4
MASSACHUSETTS	95.4	96.3	94.0	94.9
MICHIGAN	94.3	95.2	95.1	96.1
MINNESOTA	96.9	98.0	97.4	98.0
MISSISSIPPI	89.2	93.2	89.1	92.0
MISSOURI	95.0	96.2	95.0	95.8
MONTANA	93.7	94.8	93.2	93.9
NEBRASKA	97.1	97.8	95.7	96.3
NEVADA	94.1	94.4	93.0	94.0
NEW HAMPSHIRE	96.5	97.4	95.3	96.6
NEW JERSEY	94.9	96.0	95.7	96.5
NEW MEXICO	88.1	90.8	88.2	91.2
NEW YORK	94.2	95.1	95.2	96.1
NORTH CAROLINA	93.1	94.2	93.2	94.4
NORTH DAKOTA	95.8	97.0	96.5	97.1
OHIO	94.6	95.3	95.9	96.6
OKLAHOMA	91.4	93.1	90.4	91.8
OREGON	95.6	96.3	95.6	96.5
PENNSYLVANIA	97.1	97.6	96.9	97.8
RHODE ISLAND	94.5	95.6	96.0	97.0
SOUTH CAROLINA	92.5	93.8	92.3	93.7
SOUTH DAKOTA	93.9	95.0	88.9	89.8
TENNESSEE	94.5	96.4	93.9	95.4
TEXAS	91.3	93.0	92.9	94.4
UTAH	96.9	97.7	98.3	98.9
VERMONT	95.1	96.7	95.7	96.8
VIRGINIA	94.5	95.7	94.9	95.6
WASHINGTON	95.9	96.9	94.8	95.3
WEST VIRGINIA	93.2	94.9	93.8	95.4
WISCONSIN	96.3	97.2	94.9	95.9
WYOMING	93.4	95.0	92.5	93.7

TABLE 4 - PERCENTAGE OF HOUSEHOLDS WITH A TELEPHONE BY INCOME

	RACE						HISPANIC ORIGIN	
	TOTAL		WHITE		BLACK		Unit	Avail
	Unit	Avail	Unit	Avail	Unit	Avail	Unit	Avail
<b>NOVEMBER 83</b>								
TOTAL	91.4	93.7	93.1	95.0	78.8	83.9	80.7	84.6
UNDER \$5,000	71.7	78.4	75.7	81.9	62.7	70.4	58.3	64.6
\$5,000 - \$7,499	82.7	87.2	84.5	88.5	74.7	82.0	71.1	76.5
\$7,500 - \$9,999	88.2	90.9	89.6	92.2	80.5	83.9	72.6	77.9
\$10,000 - \$12,499	89.7	92.7	91.2	93.9	82.0	86.2	76.8	82.1
\$12,500 - \$14,999	92.1	94.6	93.4	95.2	82.5	90.7	89.8	91.7
\$15,000 - \$17,499	94.6	96.2	94.9	96.4	91.7	95.1	86.9	90.8
\$17,500 - \$19,999	95.7	97.4	96.1	97.7	91.4	95.0	88.4	91.5
\$20,000 - \$24,999	96.9	97.8	97.4	98.2	91.2	93.2	93.1	94.3
\$25,000 - \$29,999	98.0	98.9	98.2	99.0	96.1	97.2	98.3	99.0
\$30,000 - \$34,999	98.8	99.1	99.0	99.2	95.1	97.7	97.7	98.9
\$35,000 - \$39,999	99.0	99.5	99.1	99.5	98.4	98.4	92.1	98.2
\$40,000 - \$49,999	99.2	99.5	99.4	99.7	97.3	97.3	100.0	100.0
\$50,000 - \$74,999	99.4	99.7	99.5	99.7	98.5	100.0	99.6	100.0
\$75,000 +	99.4	99.6	99.4	99.6	100.0	100.0	100.0	100.0
<b>1984 ANNUAL AVERAGE</b>								
TOTAL	91.6	93.7	93.2	94.9	79.8	84.5	80.9	84.3
UNDER \$5,000	71.2	77.5	74.5	80.4	63.2	70.5	55.1	62.3
\$5,000 - \$7,499	83.3	86.9	85.5	88.7	74.8	80.2	69.8	73.6
\$7,500 - \$9,999	86.5	89.6	88.3	91.0	77.2	82.7	75.0	79.7
\$10,000 - \$12,499	89.7	92.6	91.1	93.6	81.1	86.3	79.7	84.6
\$12,500 - \$14,999	92.1	94.4	93.0	95.0	85.4	89.5	87.3	90.5
\$15,000 - \$17,499	93.7	95.7	94.2	96.0	88.5	92.2	88.4	90.0
\$17,500 - \$19,999	95.1	96.4	95.6	96.7	91.7	94.4	91.0	92.8
\$20,000 - \$24,999	96.8	97.8	97.1	98.0	93.3	95.8	92.5	94.5
\$25,000 - \$29,999	98.1	98.8	98.4	98.9	95.1	97.2	96.4	97.2
\$30,000 - \$34,999	98.7	99.1	98.8	99.3	96.8	97.2	98.8	99.1
\$35,000 - \$39,999	99.2	99.5	99.3	99.6	97.7	98.3	98.2	98.5
\$40,000 - \$49,999	99.3	99.6	99.4	99.7	96.6	96.9	98.9	99.3
\$50,000 - \$74,999	99.4	99.8	99.5	99.8	98.0	98.4	100.0	100.0
\$75,000 +	98.9	99.6	98.9	99.6	96.5	100.0	98.0	100.0
<b>1985 ANNUAL AVERAGE</b>								
TOTAL	91.8	93.9	93.3	95.0	81.1	85.2	81.3	84.4
UNDER \$5,000	71.9	78.1	75.3	81.3	63.9	70.6	61.6	67.0
\$5,000 - \$7,499	82.7	86.5	84.8	88.1	74.0	79.8	66.6	71.3
\$7,500 - \$9,999	86.8	90.0	88.1	90.9	80.3	85.0	75.0	79.4
\$10,000 - \$12,499	89.6	92.2	90.8	93.2	82.3	86.0	80.4	82.8
\$12,500 - \$14,999	91.0	93.7	92.2	94.5	82.7	87.8	82.8	85.8
\$15,000 - \$17,499	93.4	95.6	94.2	96.2	88.2	91.8	85.7	88.6
\$17,500 - \$19,999	94.7	96.2	95.1	96.6	91.5	93.4	90.4	92.8
\$20,000 - \$24,999	96.3	97.5	96.5	97.6	94.4	96.3	91.3	93.7
\$25,000 - \$29,999	97.6	98.5	97.8	98.6	95.8	97.3	93.0	95.9
\$30,000 - \$34,999	98.6	99.0	98.7	99.1	97.3	98.4	97.3	97.3
\$35,000 - \$39,999	98.8	99.2	98.9	99.4	96.9	97.8	98.2	99.4
\$40,000 - \$49,999	99.1	99.4	99.1	99.4	97.8	98.2	97.5	98.2
\$50,000 - \$74,999	99.3	99.7	99.4	99.7	97.9	98.8	99.5	99.5
\$75,000 +	99.2	99.5	99.2	99.5	97.6	97.6	98.5	98.5

TABLE 4 - PERCENTAGE OF HOUSEHOLDS WITH A TELEPHONE BY INCOME

	RACE						HISPANIC ORIGIN	
	TOTAL		WHITE		BLACK		Unit	Avail
	Unit	Avail	Unit	Avail	Unit	Avail	Unit	Avail
<b>1986 ANNUAL AVERAGE</b>								
TOTAL	92.3	94.1	93.7	95.2	81.6	85.9	81.4	84.1
UNDER \$5,000	71.6	77.4	74.9	80.1	63.9	71.0	57.5	62.9
\$5,000 - \$7,499	83.1	86.5	85.2	88.2	74.3	79.6	68.1	72.1
\$7,500 - \$9,999	86.9	90.2	88.4	91.1	78.6	85.2	72.9	75.8
\$10,000 - \$12,499	89.6	92.1	90.7	93.0	82.6	86.4	80.3	82.6
\$12,500 - \$14,999	91.2	93.8	91.9	94.4	86.4	90.3	83.9	87.8
\$15,000 - \$17,499	93.1	95.1	94.3	95.7	85.3	91.6	86.3	88.9
\$17,500 - \$19,999	94.9	96.3	95.3	96.7	92.2	94.2	87.2	90.1
\$20,000 - \$24,999	96.5	97.5	96.9	97.9	92.8	94.6	93.0	94.1
\$25,000 - \$29,999	97.7	98.4	98.0	98.7	94.5	95.9	93.9	95.2
\$30,000 - \$34,999	98.4	98.9	98.6	99.0	96.7	97.5	97.5	98.4
\$35,000 - \$39,999	98.9	99.3	99.0	99.4	97.6	97.9	98.1	99.3
\$40,000 - \$49,999	99.1	99.4	99.1	99.4	98.2	98.2	98.5	98.8
\$50,000 - \$74,999	99.5	99.8	99.6	99.8	99.4	99.4	99.4	99.7
\$75,000 +	99.4	99.6	99.4	99.6	98.0	99.5	97.5	100.0
<b>1987 ANNUAL AVERAGE</b>								
TOTAL	92.4	94.2	93.8	95.4	81.8	85.9	83.0	85.4
UNDER \$5,000	71.5	77.4	75.0	80.3	63.7	71.0	60.7	65.7
\$5,000 - \$7,499	83.4	86.7	85.5	88.4	74.8	80.2	69.9	72.4
\$7,500 - \$9,999	86.7	89.6	88.1	90.6	79.3	84.0	75.8	78.9
\$10,000 - \$12,499	89.5	92.3	90.4	93.1	83.2	87.5	81.0	84.1
\$12,500 - \$14,999	90.8	93.2	91.9	94.1	83.8	87.7	85.2	86.9
\$15,000 - \$17,499	92.6	94.9	93.5	95.5	86.9	90.8	85.6	88.7
\$17,500 - \$19,999	94.4	96.0	95.1	96.4	89.0	92.7	89.3	90.6
\$20,000 - \$24,999	96.4	97.6	96.8	97.9	93.5	95.1	93.1	94.9
\$25,000 - \$29,999	97.5	98.4	98.0	98.7	93.4	95.3	96.4	97.1
\$30,000 - \$34,999	98.1	98.9	98.3	99.0	96.1	97.2	96.9	97.7
\$35,000 - \$39,999	98.8	99.2	98.9	99.3	96.5	98.6	97.4	97.7
\$40,000 - \$49,999	99.4	99.7	99.5	99.7	98.7	98.7	99.7	99.8
\$50,000 - \$74,999	99.5	99.8	99.5	99.8	99.1	99.4	98.7	99.6
\$75,000 +	99.5	99.8	99.5	99.8	98.5	99.6	98.6	100.0
<b>1988 ANNUAL AVERAGE</b>								
TOTAL	92.7	94.5	94.1	95.6	83.0	86.8	82.1	85.1
UNDER \$5,000	72.0	78.4	74.9	80.8	65.8	73.2	58.5	64.5
\$5,000 - \$7,499	83.3	87.1	85.1	88.4	76.9	82.3	66.4	71.7
\$7,500 - \$9,999	85.6	88.7	87.2	90.3	77.7	81.4	67.3	72.8
\$10,000 - \$12,499	88.8	91.5	90.1	92.4	81.7	86.5	77.5	80.9
\$12,500 - \$14,999	91.3	93.7	92.2	94.4	85.1	88.8	81.5	84.5
\$15,000 - \$19,999	93.6	95.3	94.3	95.9	88.5	91.1	88.6	90.6
\$20,000 - \$24,999	96.2	97.4	96.5	97.6	93.5	95.7	91.1	93.1
\$25,000 - \$29,999	97.6	98.4	97.9	98.5	94.4	96.7	95.0	96.4
\$30,000 - \$34,999	98.4	99.0	98.7	99.2	95.4	96.7	98.6	99.0
\$35,000 - \$39,999	98.8	99.2	98.9	99.3	97.8	98.4	97.2	97.7
\$40,000 - \$49,999	99.3	99.6	99.4	99.7	97.3	98.5	98.7	99.7
\$50,000 - \$74,999	99.5	99.8	99.6	99.8	99.2	99.3	99.4	99.8
\$75,000 +	99.5	99.9	99.4	99.9	100.0	100.0	97.8	100.0

TABLE 4 - PERCENTAGE OF HOUSEHOLDS WITH A TELEPHONE BY INCOME

	RACE						HISPANIC ORIGIN	
	TOTAL		WHITE		BLACK		Unit	Avail
	Unit	Avail	Unit	Avail	Unit	Avail	Unit	Avail
<b>1989 ANNUAL AVERAGE</b>								
TOTAL	93.1	94.9	94.5	95.9	83.2	87.1	83.0	86.0
UNDER \$5,000	74.4	80.4	78.1	83.2	65.6	73.5	62.1	67.3
\$5,000 - \$7,499	83.7	87.4	85.7	89.1	77.4	82.0	68.8	73.8
\$7,500 - \$9,999	86.6	89.8	88.5	91.3	78.4	83.6	75.9	80.2
\$10,000 - \$12,499	88.4	91.3	90.0	92.6	79.3	84.9	73.2	76.8
\$12,500 - \$14,999	91.3	93.7	92.4	94.5	84.5	88.8	79.2	83.7
\$15,000 - \$19,999	93.2	95.0	94.2	95.8	85.9	89.2	86.3	88.8
\$20,000 - \$24,999	95.9	97.2	96.4	97.5	91.6	94.3	92.0	94.4
\$25,000 - \$29,999	97.5	98.4	97.9	98.6	94.0	96.0	93.3	96.3
\$30,000 - \$34,999	98.3	98.8	98.5	98.9	96.1	97.0	95.6	96.2
\$35,000 - \$39,999	98.7	99.3	98.9	99.4	96.7	98.0	95.8	97.5
\$40,000 - \$49,999	99.1	99.5	99.2	99.6	97.2	97.7	97.0	98.2
\$50,000 - \$59,999	99.5	99.7	99.5	99.8	98.7	99.0	98.7	99.2
\$60,000 - \$74,999	99.5	99.7	99.5	99.7	99.3	99.3	95.7	96.8
\$75,000 +	99.5	99.8	99.5	99.8	99.5	99.5	99.7	99.7
<b>1990 ANNUAL AVERAGE</b>								
TOTAL	93.3	95.0	94.6	96.1	83.5	87.0	82.7	85.3
UNDER \$5,000	75.4	81.0	79.1	84.2	66.1	72.8	61.1	66.1
\$5,000 - \$7,499	82.6	86.8	84.9	88.8	74.9	80.1	66.7	70.6
\$7,500 - \$9,999	86.9	89.9	89.0	91.6	77.3	82.4	74.8	77.8
\$10,000 - \$12,499	88.9	91.7	90.2	92.8	81.9	85.5	74.1	77.1
\$12,500 - \$14,999	91.7	93.9	92.7	94.7	85.9	88.7	82.0	84.3
\$15,000 - \$19,999	93.3	95.3	94.2	96.0	87.7	91.0	85.1	88.6
\$20,000 - \$24,999	95.6	97.0	96.1	97.4	91.9	93.7	89.4	91.3
\$25,000 - \$29,999	97.0	98.0	97.7	98.5	90.9	93.2	94.2	95.5
\$30,000 - \$34,999	97.9	98.6	98.4	98.9	93.3	95.4	96.0	97.0
\$35,000 - \$39,999	98.7	99.3	98.8	99.4	97.0	98.0	94.1	96.3
\$40,000 - \$49,999	99.1	99.4	99.2	99.5	98.5	98.8	97.8	97.8
\$50,000 - \$59,999	99.4	99.6	99.5	99.7	98.7	98.7	97.5	98.2
\$60,000 - \$74,999	99.5	99.7	99.6	99.8	98.3	98.8	98.8	99.1
\$75,000 +	99.5	99.8	99.5	99.8	98.6	98.6	97.7	99.6
<b>1991 ANNUAL AVERAGE</b>								
TOTAL	93.4	95.1	94.8	96.2	83.5	87.2	84.1	86.7
UNDER \$5,000	73.9	80.1	78.3	83.7	63.3	71.2	65.2	71.3
\$5,000 - \$7,499	82.9	86.8	85.2	88.8	75.0	80.3	69.6	74.7
\$7,500 - \$9,999	86.5	89.7	88.1	91.0	79.1	83.7	73.1	76.9
\$10,000 - \$12,499	88.9	91.6	90.0	92.5	82.4	86.2	76.0	79.2
\$12,500 - \$14,999	91.1	93.4	92.1	94.3	85.5	88.4	82.4	84.6
\$15,000 - \$19,999	93.4	95.2	94.3	95.9	87.1	90.7	87.0	89.8
\$20,000 - \$24,999	95.5	97.0	96.0	97.5	91.2	93.3	91.6	93.5
\$25,000 - \$29,999	96.8	97.9	97.3	98.2	93.6	96.0	90.9	92.4
\$30,000 - \$34,999	98.3	98.9	98.6	99.2	95.4	97.1	95.8	97.1
\$35,000 - \$39,999	98.7	99.1	98.8	99.3	97.0	97.7	96.2	97.3
\$40,000 - \$49,999	99.1	99.5	99.2	99.6	98.1	98.6	98.2	98.8
\$50,000 - \$59,999	99.5	99.7	99.5	99.7	98.6	99.0	97.9	98.6
\$60,000 - \$74,999	99.7	99.9	99.7	99.9	99.3	99.5	98.8	99.2
\$75,000 +	99.7	99.9	99.7	99.9	99.6	100.0	98.5	99.6

TABLE 4 - PERCENTAGE OF HOUSEHOLDS WITH A TELEPHONE BY INCOME

	RACE						HISPANIC ORIGIN	
	TOTAL		WHITE		BLACK		Unit	Avail
	Unit	Avail	Unit	Avail	Unit	Avail	Unit	Avail
<b>1992 ANNUAL AVERAGE</b>								
TOTAL	93.8	95.3	95.2	96.4	84.2	87.9	85.8	88.2
UNDER \$5,000	72.0	78.1	75.5	81.1	64.1	71.3	65.0	70.7
\$5,000 - \$7,499	83.2	86.8	85.4	88.3	76.3	82.3	72.0	75.5
\$7,500 - \$9,999	87.5	90.2	89.2	91.4	79.9	84.9	76.2	79.9
\$10,000 - \$12,499	90.5	92.9	91.6	93.9	84.6	87.9	82.1	85.3
\$12,500 - \$14,999	91.5	93.7	92.7	94.7	85.1	88.4	85.7	88.8
\$15,000 - \$19,999	93.3	95.0	94.3	95.7	86.6	90.6	86.7	89.5
\$20,000 - \$24,999	95.9	97.1	96.5	97.5	91.2	93.7	93.2	94.5
\$25,000 - \$29,999	97.1	98.0	97.6	98.5	92.6	94.6	94.8	95.6
\$30,000 - \$34,999	98.2	98.9	98.4	99.0	96.3	97.4	96.1	97.1
\$35,000 - \$39,999	98.6	99.0	98.9	99.3	96.4	97.4	96.6	97.5
\$40,000 - \$49,999	99.2	99.5	99.4	99.6	97.6	98.5	98.2	98.7
\$50,000 - \$59,999	99.4	99.7	99.4	99.7	98.9	99.6	98.3	98.5
\$60,000 - \$74,999	99.5	99.8	99.5	99.8	99.3	99.6	98.9	99.7
\$75,000 +	99.4	99.7	99.5	99.8	97.7	97.9	99.1	99.1
<b>1993 ANNUAL AVERAGE</b>								
TOTAL	94.2	95.6	95.5	96.6	85.2	88.3	86.7	88.8
UNDER \$5,000	72.9	78.9	76.4	82.0	65.5	72.7	66.3	70.7
\$5,000 - \$7,499	84.0	87.2	85.7	88.8	78.7	82.4	75.7	78.6
\$7,500 - \$9,999	87.4	90.1	89.1	91.4	80.1	84.6	79.7	82.8
\$10,000 - \$12,499	90.6	92.7	91.9	93.8	82.9	86.7	85.7	88.3
\$12,500 - \$14,999	92.0	94.1	93.2	95.1	84.8	88.7	84.0	86.2
\$15,000 - \$19,999	93.6	95.2	94.5	96.0	88.0	90.4	85.3	88.3
\$20,000 - \$24,999	96.3	97.5	96.8	97.8	92.6	94.6	91.9	94.6
\$25,000 - \$29,999	97.7	98.5	98.1	98.8	94.5	96.1	95.5	96.9
\$30,000 - \$34,999	98.3	98.9	98.6	99.1	96.3	96.9	96.2	97.3
\$35,000 - \$39,999	98.6	99.0	98.8	99.2	96.3	97.1	95.7	96.3
\$40,000 - \$49,999	99.2	99.5	99.3	99.5	98.2	98.6	96.9	97.4
\$50,000 - \$59,999	99.5	99.7	99.5	99.7	99.0	99.3	98.4	99.1
\$60,000 - \$74,999	99.6	99.8	99.6	99.8	99.3	99.3	100.0	100.0
\$75,000 +	99.5	99.8	99.5	99.8	99.4	100.0	100.0	100.0
<b>1994 ANNUAL AVERAGE</b>								
TOTAL	93.8	95.4	95.1	96.4	85.7	89.4	86.0	88.3
UNDER \$5,000	76.1	82.1	79.8	84.6	68.7	77.4	66.3	71.8
\$5,000 - \$7,499	82.7	87.0	84.9	88.9	77.2	82.4	73.1	77.3
\$7,500 - \$9,999	87.3	90.5	89.1	92.1	81.4	84.9	81.1	83.8
\$10,000 - \$12,499	89.6	92.2	90.9	93.1	81.5	88.6	83.3	86.2
\$12,500 - \$14,999	91.5	94.0	92.9	95.0	85.5	89.2	84.6	87.8
\$15,000 - \$19,999	93.6	95.3	94.4	95.8	86.6	92.2	87.6	89.7
\$20,000 - \$24,999	95.2	96.7	95.8	97.2	90.3	93.5	91.4	93.5
\$25,000 - \$29,999	96.6	97.6	97.0	97.9	93.9	95.8	92.1	93.3
\$30,000 - \$34,999	97.3	98.2	97.7	98.5	93.8	95.7	91.7	93.9
\$35,000 - \$39,999	97.8	98.5	98.1	98.6	94.4	97.3	95.2	96.0
\$40,000 - \$49,999	98.6	99.1	98.8	99.3	97.2	97.8	96.4	96.6
\$50,000 - \$59,999	99.0	99.3	99.2	99.4	96.3	98.1	99.5	99.7
\$60,000 - \$74,999	99.4	99.5	99.4	99.5	99.5	99.7	98.3	98.5
\$75,000 +	99.1	99.4	99.2	99.4	98.6	99.3	98.7	98.7

TABLE 4 - PERCENTAGE OF HOUSEHOLDS WITH A TELEPHONE BY INCOME

	RACE						HISPANIC ORIGIN	
	TOTAL		WHITE		BLACK		Unit	Avail
	Unit	Avail	Unit	Avail	Unit	Avail	Unit	Avail
<b>1995 ANNUAL AVERAGE</b>								
TOTAL	93.9	95.2	95.2	96.2	86.2	89.2	85.9	87.8
UNDER \$5,000	75.3	80.5	79.1	83.0	67.4	75.1	68.8	72.2
\$5,000 - \$7,499	82.8	86.3	84.8	87.7	77.9	83.0	72.6	75.5
\$7,500 - \$9,999	87.3	89.6	89.5	91.5	79.0	83.3	78.0	80.4
\$10,000 - \$12,499	89.8	92.1	91.2	93.2	83.5	87.6	84.2	86.4
\$12,500 - \$14,999	91.7	93.5	92.8	94.4	86.4	89.3	84.9	86.8
\$15,000 - \$19,999	93.1	95.0	94.1	95.6	88.5	92.4	84.9	87.6
\$20,000 - \$24,999	95.4	96.4	96.0	96.9	92.4	94.1	90.2	92.1
\$25,000 - \$29,999	96.6	97.6	97.0	97.9	93.7	95.6	92.2	94.3
\$30,000 - \$34,999	97.6	98.0	97.9	98.3	94.3	95.2	94.2	95.1
\$35,000 - \$39,999	98.3	98.7	98.5	98.8	96.9	97.5	97.3	98.4
\$40,000 - \$49,999	98.6	98.9	98.8	99.0	97.1	97.8	96.6	96.6
\$50,000 - \$59,999	98.8	99.1	99.0	99.3	97.7	98.2	95.7	97.0
\$60,000 - \$74,999	99.2	99.3	99.2	99.4	98.8	99.0	98.6	99.4
\$75,000 +	99.0	99.2	99.0	99.2	99.1	99.5	99.0	99.0
<b>MARCH 96</b>								
TOTAL	93.8	94.9	94.9	95.8	87.1	89.5	85.4	87.3
UNDER \$5,000	75.0	79.6	76.3	80.1	71.8	78.4	70.4	73.1
\$5,000 - \$7,499	83.0	85.7	84.4	86.6	80.4	84.4	72.8	76.4
\$7,500 - \$9,999	87.4	89.8	89.3	90.8	80.6	86.1	82.2	84.4
\$10,000 - \$12,499	89.4	91.6	90.6	92.7	85.1	87.4	82.0	84.4
\$12,500 - \$14,999	92.2	94.0	93.4	95.1	87.5	90.1	83.3	86.6
\$15,000 - \$19,999	92.3	93.9	93.3	94.7	86.2	89.2	82.6	85.4
\$20,000 - \$24,999	94.4	95.6	95.0	95.9	91.7	93.3	86.4	87.7
\$25,000 - \$29,999	96.1	97.1	96.5	97.4	92.7	94.5	94.3	96.1
\$30,000 - \$34,999	97.7	98.2	97.9	98.4	96.8	97.4	95.8	96.7
\$35,000 - \$39,999	98.2	98.6	98.4	98.8	95.8	96.5	95.8	95.8
\$40,000 - \$49,999	98.5	98.9	98.9	99.2	96.3	96.6	95.1	97.0
\$50,000 - \$59,999	99.1	99.1	99.3	99.3	96.8	96.8	98.1	98.1
\$60,000 - \$74,999	98.9	99.4	98.9	99.5	99.6	99.6	96.8	99.1
\$75,000 +	99.1	99.3	99.1	99.3	98.9	99.3	97.8	98.7
<b>JULY 96</b>								
TOTAL	93.9	95.0	94.9	95.7	87.6	90.0	87.2	88.5
UNDER \$5,000	76.0	80.1	79.1	82.2	68.8	75.2	67.5	70.5
\$5,000 - \$7,499	83.4	85.8	85.0	87.1	79.3	82.8	81.3	82.1
\$7,500 - \$9,999	87.1	89.8	88.3	90.3	81.3	86.9	78.4	80.6
\$10,000 - \$12,499	89.0	91.3	90.5	92.4	82.9	87.1	82.9	85.1
\$12,500 - \$14,999	91.8	93.9	92.0	93.9	90.1	94.2	85.9	86.7
\$15,000 - \$19,999	93.6	95.1	94.2	95.6	89.4	92.0	87.2	88.9
\$20,000 - \$24,999	94.3	95.2	94.8	95.7	90.1	91.4	87.9	90.1
\$25,000 - \$29,999	96.2	97.0	96.4	97.1	94.3	95.7	95.3	95.5
\$30,000 - \$34,999	97.5	98.0	97.6	98.2	96.6	97.4	95.9	96.9
\$35,000 - \$39,999	97.7	98.2	97.6	98.1	98.2	98.2	94.8	96.0
\$40,000 - \$49,999	98.6	98.8	98.6	98.8	97.9	97.9	96.7	97.1
\$50,000 - \$59,999	98.9	99.2	99.0	99.2	97.9	98.4	97.4	99.5
\$60,000 - \$74,999	99.1	99.2	99.4	99.5	95.1	95.1	98.1	99.2
\$75,000 +	98.5	99.0	98.5	98.9	99.3	99.3	98.0	98.0



TABLE 4 - PERCENTAGE OF HOUSEHOLDS WITH A TELEPHONE BY INCOME

	RACE						HISPANIC ORIGIN	
	TOTAL		WHITE		BLACK		Unit	Avail
	Unit	Avail	Unit	Avail	Unit	Avail	Unit	Avail
<b>NOVEMBER 96</b>								
TOTAL	93.9	95.1	95.0	95.9	87.1	90.0	86.5	88.3
UNDER \$5,000	75.9	81.1	78.6	82.8	69.8	77.2	66.2	70.6
\$5,000 - \$7,499	83.0	85.9	84.1	86.1	80.1	85.8	76.6	78.0
\$7,500 - \$9,999	87.0	89.8	88.3	90.9	83.7	87.1	78.4	82.0
\$10,000 - \$12,499	88.1	91.3	89.4	91.7	82.5	89.7	81.0	83.5
\$12,500 - \$14,999	91.0	92.6	93.0	94.3	80.6	84.1	86.2	87.8
\$15,000 - \$19,999	93.1	94.7	93.5	95.0	90.5	92.7	89.7	91.7
\$20,000 - \$24,999	94.8	95.9	95.4	96.5	92.1	93.2	85.2	88.1
\$25,000 - \$29,999	96.2	97.1	96.6	97.3	92.8	94.7	93.8	94.7
\$30,000 - \$34,999	97.4	98.1	97.7	98.3	95.7	97.4	95.4	95.4
\$35,000 - \$39,999	97.7	98.0	97.5	97.8	98.5	99.2	95.1	95.3
\$40,000 - \$49,999	98.4	98.9	98.6	99.1	96.0	96.6	96.4	98.3
\$50,000 - \$59,999	98.5	98.8	98.6	98.9	97.3	97.6	97.0	97.0
\$60,000 - \$74,999	98.5	98.7	98.7	98.9	97.1	97.1	98.9	100.0
\$75,000 +	99.2	99.4	99.3	99.4	97.8	98.9	99.3	99.3
<b>1996 ANNUAL AVERAGE</b>								
TOTAL	93.9	95.0	94.9	95.8	87.3	89.8	86.4	88.0
UNDER \$5,000	75.6	80.3	78.0	81.7	70.1	76.9	68.0	71.4
\$5,000 - \$7,499	83.1	85.8	84.5	86.6	79.9	84.3	76.9	78.8
\$7,500 - \$9,999	87.2	89.8	88.6	90.7	81.9	86.7	79.7	82.3
\$10,000 - \$12,499	88.8	91.4	90.2	92.3	83.5	88.1	82.0	84.3
\$12,500 - \$14,999	91.7	93.5	92.8	94.4	86.1	89.5	85.1	87.0
\$15,000 - \$19,999	93.0	94.6	93.7	95.1	88.7	91.3	86.5	88.7
\$20,000 - \$24,999	94.5	95.6	95.1	96.0	91.3	92.6	86.5	88.6
\$25,000 - \$29,999	96.2	97.1	96.5	97.3	93.3	95.0	94.5	95.4
\$30,000 - \$34,999	97.5	98.1	97.7	98.3	96.4	97.4	95.7	96.3
\$35,000 - \$39,999	97.9	98.3	97.8	98.2	97.5	98.0	95.2	95.7
\$40,000 - \$49,999	98.5	98.9	98.7	99.0	96.7	97.0	96.1	97.5
\$50,000 - \$59,999	98.8	99.0	99.0	99.1	97.3	97.6	97.5	98.2
\$60,000 - \$74,999	98.8	99.1	99.0	99.3	97.3	97.3	97.9	99.4
\$75,000 +	98.9	99.2	99.0	99.2	98.7	99.2	98.4	98.7
<b>MARCH 97</b>								
TOTAL	93.9	95.1	95.0	95.9	87.3	89.9	86.3	88.6
UNDER \$5,000	77.1	82.3	79.8	84.5	71.1	77.4	69.9	74.2
\$5,000 - \$7,499	83.4	85.8	85.3	87.4	77.9	81.2	76.9	78.6
\$7,500 - \$9,999	86.9	89.5	89.7	91.5	77.1	82.5	79.6	82.5
\$10,000 - \$12,499	89.0	91.3	90.5	92.2	82.5	87.3	80.0	84.4
\$12,500 - \$14,999	90.4	93.1	91.9	94.1	81.6	86.4	82.1	85.8
\$15,000 - \$19,999	93.0	94.6	93.9	95.2	89.8	92.7	81.8	84.7
\$20,000 - \$24,999	95.0	95.8	95.5	96.2	92.3	93.9	89.2	90.8
\$25,000 - \$29,999	95.2	96.3	95.8	96.8	91.4	93.8	90.7	93.2
\$30,000 - \$34,999	97.3	98.1	97.6	98.4	94.3	96.0	92.4	94.0
\$35,000 - \$39,999	97.7	98.1	98.0	98.3	96.1	96.8	95.5	96.8
\$40,000 - \$49,999	98.2	98.7	98.4	98.7	97.5	98.6	96.4	97.3
\$50,000 - \$59,999	98.4	98.7	98.4	98.8	97.2	97.3	96.7	97.6
\$60,000 - \$74,999	98.8	99.0	98.8	99.0	99.5	99.5	99.9	99.9
\$75,000 +	99.0	99.2	99.2	99.3	96.7	97.6	100.0	100.0

TABLE 4 - PERCENTAGE OF HOUSEHOLDS WITH A TELEPHONE BY INCOME

	RACE						HISPANIC ORIGIN	
	TOTAL		WHITE		BLACK		Unit	Avail
	Unit	Avail	Unit	Avail	Unit	Avail	Unit	Avail
<b>JULY 97</b>								
TOTAL	93.9	95.0	95.0	95.9	86.9	89.2	87.0	88.6
UNDER \$5,000	72.9	78.3	76.4	81.3	66.0	72.6	64.4	69.8
\$5,000 - \$7,499	82.8	86.9	84.6	88.5	78.4	83.0	75.7	78.7
\$7,500 - \$9,999	85.7	88.5	87.8	90.2	78.2	82.1	78.6	80.0
\$10,000 - \$12,499	90.1	92.0	90.5	92.4	87.7	89.5	80.9	85.0
\$12,500 - \$14,999	92.1	93.7	92.8	94.2	87.9	90.7	85.7	86.8
\$15,000 - \$19,999	94.2	95.4	95.0	95.9	90.4	92.7	91.2	91.6
\$20,000 - \$24,999	94.7	95.8	95.2	96.2	90.8	92.6	90.4	91.6
\$25,000 - \$29,999	96.5	97.3	96.8	97.4	94.5	96.3	92.3	93.6
\$30,000 - \$34,999	97.3	97.6	97.6	97.9	94.5	94.5	95.5	95.9
\$35,000 - \$39,999	97.3	97.7	97.7	97.9	95.0	96.5	94.2	96.3
\$40,000 - \$49,999	98.5	98.7	98.6	98.7	97.6	98.4	97.2	97.2
\$50,000 - \$59,999	98.3	98.7	98.4	98.8	97.0	97.4	98.0	98.7
\$60,000 - \$74,999	99.4	99.5	99.4	99.5	99.2	99.9	100.0	100.0
\$75,000 +	99.2	99.4	99.3	99.5	99.2	99.2	97.1	97.7
<b>NOVEMBER 97</b>								
TOTAL	93.8	95.0	95.0	95.9	86.6	89.4	86.8	88.6
UNDER \$5,000	77.2	81.8	81.1	84.8	68.2	75.3	71.1	76.4
\$5,000 - \$7,499	82.1	84.9	83.7	85.5	78.0	83.1	71.2	73.6
\$7,500 - \$9,999	87.5	90.5	89.5	92.0	80.4	85.4	79.8	81.7
\$10,000 - \$12,499	90.5	92.4	91.7	93.6	85.8	87.4	86.3	88.5
\$12,500 - \$14,999	90.5	92.4	92.4	93.7	82.1	87.2	85.7	86.7
\$15,000 - \$19,999	92.2	93.9	93.4	94.7	86.1	90.1	87.2	88.8
\$20,000 - \$24,999	95.3	96.1	95.5	96.1	93.3	95.1	89.3	90.2
\$25,000 - \$29,999	95.6	96.7	96.0	97.1	92.0	94.0	92.3	94.4
\$30,000 - \$34,999	97.1	97.9	97.2	98.0	96.4	97.2	92.8	94.8
\$35,000 - \$39,999	97.3	97.8	97.9	98.2	93.4	95.3	95.1	96.2
\$40,000 - \$49,999	98.0	98.4	98.2	98.6	96.0	96.3	96.3	97.7
\$50,000 - \$59,999	98.5	99.0	98.7	99.1	96.4	97.3	98.4	99.5
\$60,000 - \$74,999	98.9	99.1	98.8	99.1	99.9	99.9	95.4	95.4
\$75,000 +	98.7	99.0	98.8	99.0	99.6	99.6	97.2	97.2
<b>1997 ANNUAL AVERAGE</b>								
TOTAL	93.9	95.0	95.0	95.9	86.9	89.5	86.7	88.6
UNDER \$5,000	75.7	80.8	79.1	83.5	68.4	75.1	68.5	73.5
\$5,000 - \$7,499	82.8	85.9	84.5	87.1	78.1	82.4	74.6	77.0
\$7,500 - \$9,999	86.7	89.5	89.0	91.2	78.6	83.3	79.3	81.4
\$10,000 - \$12,499	89.9	91.9	90.9	92.7	85.3	88.1	82.4	86.0
\$12,500 - \$14,999	91.0	93.1	92.4	94.0	83.9	88.1	84.5	86.4
\$15,000 - \$19,999	93.1	94.6	94.1	95.3	88.8	91.8	86.7	88.4
\$20,000 - \$24,999	95.0	95.9	95.4	96.2	92.1	93.9	89.6	90.9
\$25,000 - \$29,999	95.8	96.8	96.2	97.1	92.6	94.7	91.8	93.7
\$30,000 - \$34,999	97.2	97.9	97.5	98.1	95.1	95.9	93.6	94.9
\$35,000 - \$39,999	97.4	97.9	97.9	98.1	94.8	96.2	94.9	96.4
\$40,000 - \$49,999	98.2	98.6	98.4	98.7	97.0	97.8	96.6	97.4
\$50,000 - \$59,999	98.4	98.8	98.5	98.9	96.9	97.3	97.7	98.6
\$60,000 - \$74,999	99.0	99.2	99.0	99.2	99.5	99.8	98.4	98.4
\$75,000 +	99.0	99.2	99.1	99.3	98.5	98.8	98.1	98.3

TABLE 4 - PERCENTAGE OF HOUSEHOLDS WITH A TELEPHONE BY INCOME

	RACE						HISPANIC ORIGIN	
	TOTAL		WHITE		BLACK		Unit	Avail
	Unit	Avail	Unit	Avail	Unit	Avail	Unit	Avail
<b>MARCH 98</b>								
TOTAL	94.1	95.1	95.1	96.0	88.1	89.7	88.8	90.2
UNDER \$5,000	75.7	79.5	78.4	82.1	69.2	73.4	74.3	77.1
\$5,000 - \$7,499	82.4	85.3	84.0	87.0	77.7	80.9	77.8	80.0
\$7,500 - \$9,999	88.7	90.3	89.7	91.1	86.4	88.7	82.5	83.9
\$10,000 - \$12,499	90.2	92.2	90.6	92.7	88.1	89.9	81.8	84.2
\$12,500 - \$14,999	91.6	93.7	92.1	94.3	87.0	88.5	87.0	88.1
\$15,000 - \$19,999	93.3	94.4	94.2	95.3	89.3	90.2	92.4	93.9
\$20,000 - \$24,999	94.2	95.6	94.8	96.0	91.7	94.6	88.7	90.3
\$25,000 - \$29,999	96.2	96.9	96.4	97.1	94.3	95.3	92.4	93.9
\$30,000 - \$34,999	96.8	97.3	97.5	98.0	92.0	93.0	96.7	97.6
\$35,000 - \$39,999	97.5	98.1	97.9	98.4	94.3	95.4	95.2	95.7
\$40,000 - \$49,999	98.0	98.3	98.4	98.6	94.7	95.8	96.5	97.5
\$50,000 - \$59,999	98.2	98.4	98.1	98.4	98.5	98.5	92.5	93.7
\$60,000 - \$74,999	98.6	98.9	98.7	99.0	98.2	98.6	99.1	99.1
\$75,000 +	99.1	99.3	99.1	99.3	98.8	98.8	98.6	99.1

TABLE 5 - PERCENTAGE OF HOUSEHOLDS WITH A TELEPHONE BY HOUSEHOLD SIZE

	RACE						HISPANIC ORIGIN	
	TOTAL		WHITE		BLACK		Unit	Avail
	Unit	Avail	Unit	Avail	Unit	Avail	Unit	Avail
<b>NOVEMBER 83</b>								
TOTAL	91.4	93.7	93.1	95.0	78.8	83.9	80.7	84.6
1 PERSON	87.5	91.3	90.2	93.7	71.2	77.1	73.8	82.0
2 - 3	93.3	95.0	94.5	95.9	82.5	87.8	80.7	84.3
4 - 5	92.4	94.2	93.6	95.0	83.1	87.3	83.4	86.2
6 +	86.6	88.9	90.5	92.2	74.5	78.5	81.0	84.0
<b>1984 ANNUAL AVERAGE</b>								
TOTAL	91.6	93.7	93.2	94.9	79.8	84.5	80.9	84.3
1 PERSON	88.3	91.8	90.3	93.4	74.9	80.7	72.9	79.4
2 - 3	93.2	94.9	94.5	95.9	82.3	86.8	82.0	85.2
4 - 5	92.5	94.0	93.9	95.1	81.8	85.7	83.9	86.2
6 +	86.9	88.8	89.8	91.1	76.3	80.1	79.2	81.8
<b>1985 ANNUAL AVERAGE</b>								
TOTAL	91.8	93.9	93.3	95.0	81.1	85.2	81.3	84.4
1 PERSON	87.6	91.2	89.9	93.1	73.6	79.8	71.9	78.5
2 - 3	93.5	95.0	94.5	95.8	84.9	87.9	83.6	86.0
4 - 5	94.2	95.3	95.2	96.1	87.6	90.4	85.6	87.0
6 +	90.3	91.8	92.8	93.6	81.3	84.9	85.6	86.1
<b>1986 ANNUAL AVERAGE</b>								
TOTAL	92.3	94.1	93.7	95.2	81.6	85.9	81.4	84.1
1 PERSON	88.1	91.4	90.4	93.2	75.4	81.0	73.9	79.3
2 - 3	94.0	95.3	95.0	96.1	85.3	88.9	83.1	85.4
4 - 5	94.4	95.3	95.4	96.1	87.9	90.4	85.5	86.7
6 +	90.1	91.5	92.9	93.5	77.8	82.8	83.3	84.1
<b>1987 ANNUAL AVERAGE</b>								
TOTAL	92.4	94.2	93.8	95.4	81.8	85.9	83.0	85.4
1 PERSON	89.5	92.7	91.3	94.1	77.8	83.1	79.5	83.5
2 - 3	93.9	95.3	95.1	96.3	83.9	87.3	83.8	86.3
4 - 5	93.0	94.5	94.3	95.4	83.6	87.4	84.4	86.4
6 +	87.4	89.1	89.8	91.0	77.4	81.5	80.6	81.6
<b>1988 ANNUAL AVERAGE</b>								
TOTAL	92.7	94.5	94.1	95.6	83.0	86.8	82.1	85.1
1 PERSON	88.4	91.7	90.6	93.5	76.4	82.0	74.4	79.5
2 - 3	94.5	95.7	95.4	96.4	86.8	89.7	84.2	86.9
4 - 5	94.9	95.8	95.8	96.5	89.0	90.7	84.4	85.6
6 +	92.8	94.3	93.7	94.9	87.2	90.6	86.1	88.0
<b>1989 ANNUAL AVERAGE</b>								
TOTAL	93.1	94.9	94.5	95.9	83.2	87.1	83.0	86.0
1 PERSON	90.0	93.0	91.9	94.6	79.1	83.8	75.5	81.3
2 - 3	94.5	95.8	95.6	96.7	85.8	89.3	84.3	87.3
4 - 5	94.5	95.5	95.7	96.4	85.7	88.8	86.9	88.5
6 +	90.5	92.0	92.7	93.8	82.4	85.8	84.9	86.5

TABLE 5 - PERCENTAGE OF HOUSEHOLDS WITH A TELEPHONE BY HOUSEHOLD SIZE

	RACE						HISPANIC ORIGIN	
	TOTAL		WHITE		BLACK		Unit	Avail
	Unit	Avail	Unit	Avail	Unit	Avail	Unit	Avail
<b>1990 ANNUAL AVERAGE</b>								
TOTAL	93.3	95.0	94.6	96.1	83.5	87.0	82.7	85.3
1 PERSON	90.9	93.7	92.5	95.1	80.2	84.8	76.2	80.5
2 - 3	94.7	96.0	95.8	96.9	86.0	89.0	84.2	86.7
4 - 5	93.6	95.0	95.0	96.1	84.0	87.1	84.6	86.8
6 +	87.8	89.6	90.2	91.5	78.5	81.8	80.6	81.8
<b>1991 ANNUAL AVERAGE</b>								
TOTAL	93.4	95.1	94.8	96.2	83.5	87.2	84.1	87.7
1 PERSON	91.1	93.9	92.8	95.3	79.8	84.9	77.7	83.3
2 - 3	94.9	96.2	96.0	97.1	85.8	88.9	86.2	88.4
4 - 5	93.7	95.0	95.1	96.1	84.3	87.4	85.1	87.5
6 +	88.8	90.4	90.5	91.8	81.0	83.9	82.0	83.3
<b>1992 ANNUAL AVERAGE</b>								
TOTAL	93.8	95.3	95.2	96.4	84.2	87.9	85.8	88.2
1 PERSON	91.8	94.1	93.4	95.4	81.4	86.1	81.3	85.4
2 - 3	95.1	96.3	96.2	97.2	86.1	89.2	86.3	88.9
4 - 5	93.9	95.2	95.3	96.2	84.4	88.0	87.4	89.2
6 +	89.9	91.4	91.7	92.7	82.8	85.4	85.7	86.6
<b>1993 ANNUAL AVERAGE</b>								
TOTAL	94.2	95.6	95.5	96.6	85.2	88.3	86.7	88.8
1 PERSON	92.3	94.6	93.9	95.8	82.5	86.8	81.9	86.4
2 - 3	95.3	96.4	96.3	97.2	87.1	89.6	87.3	89.1
4 - 5	94.5	95.6	95.9	96.7	85.7	88.3	88.4	90.2
6 +	89.9	91.5	92.0	93.0	81.2	84.9	85.7	87.1
<b>1994 ANNUAL AVERAGE</b>								
TOTAL	93.8	95.4	95.1	96.4	85.7	89.4	86.0	88.3
1 PERSON	91.8	94.2	93.4	95.4	82.2	86.7	82.1	85.9
2 - 3	95.0	96.2	96.0	97.0	87.9	91.1	86.6	88.9
4 - 5	94.2	95.6	95.5	96.6	86.6	89.9	88.1	89.5
6 +	89.4	91.7	91.3	93.1	82.3	86.9	83.4	85.9
<b>1995 ANNUAL AVERAGE</b>								
TOTAL	93.9	95.2	95.2	96.2	86.2	89.2	85.9	87.8
1 PERSON	91.6	93.4	93.2	94.6	82.1	85.9	80.6	82.7
2 - 3	95.2	96.1	96.2	96.9	88.2	90.7	86.4	88.2
4 - 5	94.5	95.6	95.6	96.5	87.9	90.5	88.0	89.8
6 +	90.4	92.3	92.0	93.6	84.4	87.8	85.2	87.1
<b>MARCH 96</b>								
TOTAL	93.8	94.9	94.9	95.8	87.1	89.5	85.4	87.3
1 PERSON	91.5	93.1	92.7	94.2	84.0	86.2	81.1	84.8
2 - 3	95.2	96.1	96.1	96.7	88.9	91.2	86.6	88.3
4 - 5	94.2	95.1	95.3	95.9	88.0	90.7	85.5	87.0
6 +	89.3	91.2	90.5	92.2	85.0	87.9	86.8	88.4

TABLE 5 - PERCENTAGE OF HOUSEHOLDS WITH A TELEPHONE BY HOUSEHOLD SIZE

	RACE						HISPANIC ORIGIN	
	TOTAL		WHITE		BLACK		Unit	Avail
	Unit	Avail	Unit	Avail	Unit	Avail	Unit	Avail
<b>JULY 96</b>								
TOTAL	93.9	95.0	94.9	95.7	87.6	90.0	87.2	88.5
1 PERSON	91.3	92.9	92.4	93.8	84.5	87.3	79.7	81.5
2 - 3	95.2	96.1	96.1	96.8	88.5	91.2	89.0	90.3
4 - 5	94.6	95.5	95.3	96.0	90.2	91.8	88.6	90.1
6 +	90.5	91.3	91.9	92.2	84.4	87.2	85.3	85.8
<b>NOVEMBER 96</b>								
TOTAL	93.9	95.1	95.0	95.9	87.1	90.0	86.5	88.3
1 PERSON	91.6	93.3	92.9	94.5	82.9	86.0	80.7	83.9
2 - 3	95.1	96.1	96.0	96.7	89.2	92.0	86.9	88.2
4 - 5	94.6	95.8	95.4	96.4	88.5	91.4	89.4	91.3
6 +	89.6	90.9	91.0	91.8	84.3	87.4	84.2	85.3
<b>1996 ANNUAL AVERAGE</b>								
TOTAL	93.9	95.0	94.9	95.8	87.3	89.8	86.4	88.0
1 PERSON	91.5	93.1	92.7	94.2	83.8	86.5	80.5	83.4
2 - 3	95.2	96.1	96.1	96.7	88.9	91.5	87.5	88.9
4 - 5	94.5	95.5	95.3	96.1	88.9	91.3	87.8	89.5
6 +	89.8	91.1	91.1	92.1	84.6	87.5	85.4	86.5
<b>MARCH 97</b>								
TOTAL	93.9	95.1	95.0	95.9	87.3	89.9	86.3	88.6
1 PERSON	92.0	93.7	93.1	94.4	85.1	88.4	79.3	84.4
2 - 3	95.0	96.0	95.9	96.7	89.6	91.7	87.6	89.6
4 - 5	94.5	95.5	95.7	96.4	87.2	89.7	88.5	89.7
6 +	89.0	90.8	91.0	92.3	78.7	83.3	85.0	88.1
<b>JULY 97</b>								
TOTAL	93.9	95.0	95.0	95.9	86.9	89.2	87.0	88.6
1 PERSON	91.0	92.8	92.5	94.1	82.5	85.3	82.9	86.0
2 - 3	95.2	96.0	96.1	96.7	89.3	91.1	87.0	88.7
4 - 5	94.9	95.8	95.9	96.6	88.1	90.5	89.2	90.2
6 +	90.9	92.0	92.5	93.1	85.0	87.6	86.5	87.2
<b>NOVEMBER 97</b>								
TOTAL	93.8	95.0	95.0	95.9	86.6	89.4	86.8	88.6
1 PERSON	91.3	92.9	92.9	94.3	82.4	85.2	78.2	80.7
2 - 3	94.9	95.9	95.7	96.5	88.6	91.3	88.2	90.0
4 - 5	95.0	96.0	96.0	96.8	88.3	91.4	89.6	91.1
6 +	91.1	92.3	92.3	93.2	85.4	87.8	85.6	87.4
<b>1997 ANNUAL AVERAGE</b>								
TOTAL	93.9	95.0	95.0	95.9	86.9	89.5	86.7	88.6
1 PERSON	91.4	93.1	92.8	94.3	83.3	86.3	80.1	83.7
2 - 3	95.0	96.0	95.9	96.6	89.2	91.4	87.6	89.4
4 - 5	94.8	95.8	95.9	96.6	87.9	90.5	89.1	90.3
6 +	90.3	91.7	91.9	92.9	83.0	86.2	85.7	87.6

TABLE 5 - PERCENTAGE OF HOUSEHOLDS WITH A TELEPHONE BY HOUSEHOLD SIZE

	RACE						HISPANIC ORIGIN	
	TOTAL		WHITE		BLACK		Unit	Avail
	Unit	Avail	Unit	Avail	Unit	Avail	Unit	Avail
<b>MARCH 98</b>								
TOTAL	94.1	95.1	95.1	96.0	88.1	89.7	88.8	90.2
1 PERSON	91.2	92.8	92.9	94.3	82.4	84.7	83.3	85.0
2 - 3	95.5	96.2	96.1	96.7	91.2	92.5	89.5	90.7
4 - 5	95.0	95.7	95.7	96.4	89.7	90.9	90.6	92.2
6 +	91.9	92.7	93.1	93.6	87.8	90.3	88.4	89.2

TABLE 6 - PERCENTAGE OF HOUSEHOLDS WITH A TELEPHONE BY HOUSEHOLDER'S AGE

	RACE						HISPANIC ORIGIN	
	TOTAL		WHITE		BLACK			
	Unit	Avail	Unit	Avail	Unit	Avail	Unit	Avail
<b>NOVEMBER 83</b>								
TOTAL HOUSEHOLDS	91.4	93.7	93.1	95.0	78.8	83.9	80.7	84.6
16-24 YRS OLD	76.6	84.1	80.2	86.2	49.9	68.2	64.9	71.9
25-54 YRS OLD	91.5	93.7	93.4	95.2	78.7	83.3	81.8	85.6
55-59 YRS OLD	95.0	96.1	96.1	97.0	86.3	88.5	89.3	89.3
60-64 YRS OLD	95.5	96.4	96.4	97.2	89.5	90.7	87.3	90.2
65-69 YRS OLD	95.5	96.2	96.5	97.0	87.2	89.0	90.7	90.7
70-99 YRS OLD	95.4	96.5	96.0	97.0	90.1	92.3	85.5	89.1
<b>1984 ANNUAL AVERAGE</b>								
TOTAL HOUSEHOLDS	91.6	93.7	93.2	94.9	79.8	84.5	80.9	84.3
16-24 YRS OLD	77.0	83.6	79.6	85.4	58.2	70.8	60.9	69.2
25-54 YRS OLD	91.7	93.7	93.4	95.1	79.6	84.1	83.1	85.7
55-59 YRS OLD	94.9	96.1	96.1	97.1	86.6	89.2	87.1	90.1
60-64 YRS OLD	94.9	96.0	96.0	97.0	86.6	88.8	87.1	89.1
65-69 YRS OLD	96.2	96.8	97.1	97.6	87.9	89.9	90.2	91.5
70-99 YRS OLD	95.3	96.5	96.0	97.1	88.2	90.9	84.4	87.6
<b>1985 ANNUAL AVERAGE</b>								
TOTAL HOUSEHOLDS	91.8	93.9	93.3	95.0	81.1	85.2	81.3	84.4
16-24 YRS OLD	77.9	83.8	80.3	85.8	60.0	69.4	64.8	70.8
25-54 YRS OLD	91.9	93.9	93.5	95.2	80.7	85.0	82.5	85.2
55-59 YRS OLD	94.9	96.0	95.8	96.8	87.8	90.0	87.4	89.2
60-64 YRS OLD	94.9	95.9	95.8	96.5	88.4	90.2	89.7	91.3
65-69 YRS OLD	95.9	96.8	96.8	97.5	88.2	90.9	89.1	91.7
70-99 YRS OLD	95.5	96.6	96.2	97.3	89.1	90.7	87.6	90.9
<b>1986 ANNUAL AVERAGE</b>								
TOTAL HOUSEHOLDS	92.3	94.1	93.7	95.2	81.6	85.9	81.4	84.1
16-24 YRS OLD	79.0	84.4	81.5	85.9	59.8	72.2	63.4	67.4
25-54 YRS OLD	92.2	94.0	93.8	95.3	81.1	85.2	82.9	85.5
55-59 YRS OLD	95.2	96.3	96.1	97.0	88.0	91.3	87.6	90.4
60-64 YRS OLD	95.4	96.2	96.2	97.0	88.9	90.4	89.1	90.3
65-69 YRS OLD	95.8	96.7	96.7	97.4	88.4	90.6	90.4	91.9
70-99 YRS OLD	96.0	97.0	96.5	97.4	91.3	92.9	87.5	89.8
<b>1987 ANNUAL AVERAGE</b>								
TOTAL HOUSEHOLDS	92.4	94.2	93.8	95.4	81.8	85.9	83.0	85.4
16-24 YRS OLD	78.9	84.4	81.4	86.1	61.8	72.3	65.2	70.8
25-54 YRS OLD	92.3	94.2	93.9	95.4	81.4	85.5	84.4	86.5
55-59 YRS OLD	95.2	96.2	96.4	97.2	87.0	89.6	89.1	90.7
60-64 YRS OLD	95.7	96.4	96.6	97.3	88.0	90.2	90.9	92.0
65-69 YRS OLD	95.9	96.7	97.0	97.5	87.1	89.3	88.8	88.8
70-99 YRS OLD	96.0	97.0	96.5	97.5	91.9	93.0	91.6	93.1
<b>1988 ANNUAL AVERAGE</b>								
TOTAL HOUSEHOLDS	92.7	94.5	94.1	95.6	83.0	86.8	82.1	85.1
16-24 YRS OLD	80.2	85.1	82.3	86.8	65.6	73.5	64.0	70.9
25-54 YRS OLD	92.6	94.4	94.1	95.6	82.2	86.3	83.5	86.1
55-59 YRS OLD	95.1	96.4	96.1	97.2	88.3	91.0	88.5	89.9
60-64 YRS OLD	95.3	96.2	96.3	97.0	87.6	89.9	87.3	90.0
65-69 YRS OLD	96.4	97.1	97.2	97.7	89.6	92.0	89.6	91.2
70-99 YRS OLD	96.2	97.5	96.7	97.9	92.3	93.9	92.2	94.3



TABLE 6 - PERCENTAGE OF HOUSEHOLDS WITH A TELEPHONE BY HOUSEHOLDER'S AGE

	RACE						HISPANIC ORIGIN	
	TOTAL		WHITE		BLACK			
	Unit	Avail	Unit	Avail	Unit	Avail	Unit	Avail
<b>1989 ANNUAL AVERAGE</b>								
TOTAL HOUSEHOLDS	93.1	94.9	94.5	95.9	83.2	87.1	83.0	86.0
16-24 YRS OLD	80.5	85.9	82.9	87.7	65.3	75.2	64.8	72.3
25-54 YRS OLD	92.7	94.6	94.3	95.8	82.2	86.4	83.6	86.5
55-59 YRS OLD	95.4	96.5	96.4	97.4	88.7	90.7	90.1	91.2
60-64 YRS OLD	95.7	96.7	96.6	97.3	89.2	91.6	89.8	90.0
65-69 YRS OLD	96.3	97.0	97.1	97.7	90.3	91.9	88.8	91.0
70-99 YRS OLD	96.4	97.4	97.1	97.9	91.1	92.6	89.8	92.0
<b>1990 ANNUAL AVERAGE</b>								
TOTAL HOUSEHOLDS	93.3	95.0	94.6	96.1	83.5	87.0	82.7	85.3
16-24 YRS OLD	81.2	86.5	83.6	88.2	66.4	75.3	67.8	73.5
25-54 YRS OLD	92.6	94.5	94.1	95.7	82.4	86.1	82.0	84.6
55-59 YRS OLD	95.4	96.4	96.5	97.4	87.3	89.6	89.9	90.7
60-64 YRS OLD	96.2	96.9	97.1	97.6	89.7	91.6	90.6	91.1
65-69 YRS OLD	96.3	97.1	97.0	97.8	90.7	91.7	90.7	92.5
70-99 YRS OLD	96.9	97.8	97.4	98.3	91.9	93.3	93.2	94.1
<b>1991 ANNUAL AVERAGE</b>								
TOTAL HOUSEHOLDS	93.4	95.1	94.8	96.2	83.5	87.2	84.1	86.7
16-24 YRS OLD	81.0	86.1	83.4	88.0	65.7	74.5	68.5	73.9
25-54 YRS OLD	92.7	94.6	94.3	95.8	82.3	86.3	84.1	86.7
55-59 YRS OLD	95.5	96.7	96.5	97.5	88.0	90.9	89.8	90.5
60-64 YRS OLD	95.9	96.9	96.9	97.6	88.5	90.8	88.3	90.4
65-69 YRS OLD	96.7	97.5	97.5	98.2	89.8	91.8	92.9	94.0
70-99 YRS OLD	97.3	98.1	97.8	98.6	92.8	93.5	92.1	94.0
<b>1992 ANNUAL AVERAGE</b>								
TOTAL HOUSEHOLDS	93.8	95.3	95.2	96.4	84.2	87.9	85.8	88.2
15-24 YRS OLD	82.0	87.4	85.0	89.6	64.2	74.1	72.8	80.4
25-54 YRS OLD	93.1	94.8	94.6	95.9	82.9	87.0	85.5	87.7
55-59 YRS OLD	96.0	96.8	97.0	97.5	89.6	91.9	91.5	92.3
60-64 YRS OLD	96.3	97.1	97.0	97.7	91.2	92.6	89.3	91.2
65-69 YRS OLD	96.6	97.3	97.5	98.0	89.8	92.0	92.0	92.4
70-99 YRS OLD	97.5	98.0	98.0	98.5	93.1	94.0	94.2	95.0
<b>1993 ANNUAL AVERAGE</b>								
TOTAL HOUSEHOLDS	94.2	95.6	95.5	96.6	85.2	88.3	86.7	88.8
15-24 YRS OLD	83.3	87.3	85.7	89.2	70.1	77.3	71.8	76.3
25-54 YRS OLD	93.5	95.1	95.0	96.3	83.5	87.0	86.4	88.7
55-59 YRS OLD	95.9	96.8	96.7	97.5	90.0	92.2	91.3	92.1
60-64 YRS OLD	97.0	97.6	97.7	98.3	91.9	93.3	92.5	93.7
65-69 YRS OLD	97.0	97.6	97.5	98.1	92.8	93.5	92.9	93.9
70-99 YRS OLD	97.6	98.2	98.0	98.6	93.2	94.1	94.7	95.4
<b>1994 ANNUAL AVERAGE</b>								
TOTAL HOUSEHOLDS	93.8	95.4	95.1	96.4	85.7	89.4	86.0	88.3
15-24 YRS OLD	84.3	89.2	86.1	90.4	74.0	83.0	71.8	77.1
25-54 YRS OLD	93.3	95.0	94.7	96.0	84.8	88.7	86.1	88.4
55-59 YRS OLD	95.6	96.6	96.3	97.2	90.7	92.9	89.4	91.1
60-64 YRS OLD	96.3	97.2	97.1	97.9	90.1	91.9	91.8	92.4
65-69 YRS OLD	96.7	97.3	97.3	97.8	91.8	93.2	93.3	93.5
70-99 YRS OLD	96.7	97.6	97.2	98.1	91.7	93.1	92.3	93.7

TABLE 6 - PERCENTAGE OF HOUSEHOLDS WITH A TELEPHONE BY HOUSEHOLDER'S AGE

	RACE						HISPANIC ORIGIN	
	TOTAL		WHITE		BLACK			
	Unit	Avail	Unit	Avail	Unit	Avail	Unit	Avail
<b>1995 ANNUAL AVERAGE</b>								
TOTAL HOUSEHOLDS	93.9	95.2	95.2	96.2	86.2	89.2	85.9	87.8
15-24 YRS OLD	84.6	88.5	87.0	90.2	73.2	80.6	74.8	78.0
25-54 YRS OLD	93.6	94.9	95.0	96.0	85.4	88.5	86.1	88.0
55-59 YRS OLD	95.7	96.4	96.2	96.8	92.5	93.9	88.6	90.0
60-64 YRS OLD	95.8	96.5	96.3	96.9	91.7	93.4	90.0	90.9
65-69 YRS OLD	96.4	96.8	96.9	97.4	92.2	93.1	91.2	92.6
70-99 YRS OLD	96.4	97.1	97.0	97.5	91.4	92.8	90.4	92.1
<b>MARCH 96</b>								
TOTAL HOUSEHOLDS	93.8	94.9	94.9	95.8	87.1	89.5	85.4	87.3
15-24 YRS OLD	84.4	87.8	86.3	89.1	73.8	79.8	72.0	76.3
25-54 YRS OLD	93.5	94.7	94.6	95.6	86.5	89.2	86.1	87.8
55-59 YRS OLD	96.0	96.6	96.6	97.2	93.0	93.8	90.1	90.7
60-64 YRS OLD	96.9	97.1	97.7	97.9	90.9	91.2	90.5	90.5
65-69 YRS OLD	95.0	95.6	95.7	96.3	90.9	91.8	90.3	91.9
70-99 YRS OLD	96.2	96.8	96.5	97.1	92.9	93.7	87.5	90.7
<b>JULY 96</b>								
TOTAL HOUSEHOLDS	93.9	95.0	94.9	95.7	87.6	90.0	87.2	88.5
15-24 YRS OLD	84.9	88.2	86.6	89.4	74.9	80.9	73.0	75.3
25-54 YRS OLD	93.6	94.8	94.7	95.6	86.8	89.5	87.9	89.4
55-59 YRS OLD	96.0	96.6	96.4	96.9	92.5	93.9	93.4	93.4
60-64 YRS OLD	94.7	95.6	95.1	95.8	92.9	94.4	88.5	89.5
65-69 YRS OLD	96.0	96.6	96.5	96.9	93.5	94.4	86.0	87.0
70-99 YRS OLD	96.3	96.8	96.7	97.2	92.8	93.1	93.0	93.0
<b>NOVEMBER 96</b>								
TOTAL HOUSEHOLDS	93.9	95.1	95.0	95.9	87.1	90.0	86.5	88.3
15-24 YRS OLD	85.5	89.1	87.5	90.2	74.9	82.9	73.8	77.5
25-54 YRS OLD	93.4	94.8	94.6	95.7	86.4	89.4	87.4	89.3
55-59 YRS OLD	95.0	95.6	95.9	96.3	87.5	89.9	87.3	88.1
60-64 YRS OLD	95.6	96.0	96.2	96.6	92.1	93.3	85.6	86.4
65-69 YRS OLD	96.4	96.7	96.9	97.2	93.0	93.7	92.3	92.3
70-99 YRS OLD	97.0	97.5	97.2	97.7	94.9	96.0	92.2	93.2
<b>1996 ANNUAL AVERAGE</b>								
TOTAL HOUSEHOLDS	93.9	95.0	94.9	95.8	87.3	89.8	86.4	88.0
15-24 YRS OLD	84.9	88.4	86.8	89.6	74.5	81.2	72.9	76.4
25-54 YRS OLD	93.5	94.8	94.6	95.6	86.6	89.4	87.1	88.8
55-59 YRS OLD	95.7	96.3	96.3	96.8	91.0	92.5	90.3	90.7
60-64 YRS OLD	95.7	96.2	96.3	96.8	92.0	93.0	88.2	88.8
65-69 YRS OLD	95.8	96.3	96.4	96.8	92.5	93.3	89.5	90.4
70-99 YRS OLD	96.5	97.0	96.8	97.3	93.5	94.3	90.9	92.3
<b>MARCH 97</b>								
TOTAL HOUSEHOLDS	93.9	95.1	95.0	95.9	87.3	89.9	86.3	88.6
15-24 YRS OLD	85.0	89.0	86.2	89.8	77.3	83.9	72.9	77.8
25-54 YRS OLD	93.5	94.8	94.7	95.8	86.1	89.1	86.9	89.1
55-59 YRS OLD	95.6	96.2	96.7	97.2	89.9	91.7	89.5	93.8
60-64 YRS OLD	96.6	97.0	97.1	97.4	93.2	93.7	92.6	92.6
65-69 YRS OLD	96.2	96.7	96.8	97.2	92.2	93.3	95.1	97.1
70-99 YRS OLD	96.2	96.7	96.3	96.9	95.2	95.4	85.7	86.2

TABLE 6 - PERCENTAGE OF HOUSEHOLDS WITH A TELEPHONE BY HOUSEHOLDER'S AGE

	RACE						HISPANIC ORIGIN	
	TOTAL		WHITE		BLACK			
	Unit	Avail	Unit	Avail	Unit	Avail	Unit	Avail
<b>JULY 97</b>								
TOTAL HOUSEHOLDS	93.9	95.0	95.0	95.9	86.9	89.2	87.0	88.6
15-24 YRS OLD	84.1	87.8	86.1	89.6	72.2	78.0	76.2	80.4
25-54 YRS OLD	93.8	94.9	94.9	95.8	86.6	89.1	87.3	88.8
55-59 YRS OLD	95.9	96.7	96.6	97.1	92.4	94.1	92.1	92.8
60-64 YRS OLD	95.6	96.2	96.2	96.8	91.0	91.5	90.4	91.7
65-69 YRS OLD	95.7	96.1	96.4	96.8	91.5	92.3	84.1	84.8
70-99 YRS OLD	96.0	96.5	96.6	97.0	91.9	92.0	93.7	94.6
<b>NOVEMBER 97</b>								
TOTAL HOUSEHOLDS	93.8	95.0	95.0	95.9	86.6	89.4	86.8	88.6
15-24 YRS OLD	85.7	89.6	87.8	91.0	75.1	83.0	75.9	79.9
25-54 YRS OLD	93.4	94.6	94.6	95.6	86.3	88.9	87.2	88.9
55-59 YRS OLD	94.6	95.3	95.9	96.5	85.4	86.7	88.7	89.9
60-64 YRS OLD	95.9	96.4	96.5	96.9	92.0	93.0	88.7	89.2
65-69 YRS OLD	96.7	97.3	97.0	97.4	94.2	95.8	93.4	95.3
70-99 YRS OLD	96.4	97.0	96.8	97.3	91.9	93.6	91.5	93.2
<b>1997 ANNUAL AVERAGE</b>								
TOTAL HOUSEHOLDS	93.9	95.0	95.0	95.9	86.9	89.5	86.7	88.6
16-24 YRS OLD	84.9	88.8	86.7	90.1	74.9	81.6	75.0	79.4
25-54 YRS OLD	93.6	94.8	94.7	95.7	86.3	89.0	87.1	88.9
55-59 YRS OLD	95.4	96.1	96.4	96.9	89.2	90.8	90.1	92.2
60-64 YRS OLD	96.0	96.5	96.6	97.0	92.1	92.7	90.6	91.2
65-69 YRS OLD	96.2	96.7	96.7	97.1	92.6	93.8	90.9	92.4
70-99 YRS OLD	96.2	96.7	96.6	97.1	93.0	93.7	90.3	91.3
<b>MARCH 98</b>								
TOTAL HOUSEHOLDS	94.1	95.1	95.1	96.0	88.1	89.7	88.8	90.2
15-24 YRS OLD	86.8	89.4	88.2	90.6	80.7	84.1	81.9	84.8
25-54 YRS OLD	93.8	94.8	94.8	95.7	87.2	89.0	88.8	90.0
55-59 YRS OLD	95.8	96.4	96.2	96.9	93.5	93.6	90.4	92.9
60-64 YRS OLD	95.7	96.3	96.5	97.1	90.9	92.0	90.6	92.7
65-69 YRS OLD	96.3	96.8	97.0	97.6	90.3	90.3	99.9	100.0
70-99 YRS OLD	96.2	96.8	96.6	97.1	93.8	94.9	90.6	91.3

TABLE 7 - PERCENTAGE OF ADULTS WITH A TELEPHONE BY LABOR FORCE STATUS

	RACE						HISPANIC ORIGIN	
	TOTAL		WHITE		BLACK		Unit	Avail
	Unit	Avail	Unit	Avail	Unit	Avail	Unit	Avail
<b>NOVEMBER 83</b>								
TOTAL CNP	92.8	94.5	94.1	95.6	82.7	86.6	83.4	86.5
EMPLOYED	94.1	95.9	95.0	96.6	85.7	89.8	86.3	89.6
UNEMPLOYED	82.5	86.5	84.8	88.1	74.6	81.2	76.6	79.9
NOT IN LABOR FORCE	92.1	93.4	93.8	94.9	80.8	83.7	80.4	83.0
<b>1984 ANNUAL AVERAGE</b>								
TOTAL CNP	92.8	94.5	94.1	95.5	82.9	86.7	83.0	85.6
EMPLOYED	94.0	95.7	95.0	96.4	85.9	89.8	85.7	88.3
UNEMPLOYED	81.7	85.3	84.0	87.0	74.7	80.2	74.0	77.4
NOT IN LABOR FORCE	92.1	93.5	93.8	95.0	80.7	83.9	80.3	82.8
<b>1985 ANNUAL AVERAGE</b>								
TOTAL CNP	93.0	94.6	94.2	95.6	84.1	87.4	83.5	85.8
EMPLOYED	94.2	95.8	95.0	96.5	87.3	90.4	85.1	87.5
UNEMPLOYED	82.3	85.8	84.2	87.3	76.3	81.1	73.8	76.9
NOT IN LABOR FORCE	92.2	93.6	93.8	94.9	81.5	84.5	82.6	84.6
<b>1986 ANNUAL AVERAGE</b>								
TOTAL CNP	93.4	94.8	94.6	95.8	84.6	88.1	83.3	85.4
EMPLOYED	94.7	96.1	95.5	96.6	87.7	91.1	85.3	87.4
UNEMPLOYED	82.3	86.0	84.5	87.6	74.8	80.7	75.3	78.2
NOT IN LABOR FORCE	92.6	93.9	94.1	95.1	82.3	85.4	81.4	83.4
<b>1987 ANNUAL AVERAGE</b>								
TOTAL CNP	93.5	94.9	94.7	95.9	84.7	88.1	84.5	86.4
EMPLOYED	94.6	96.1	95.4	96.7	87.9	91.0	86.3	88.3
UNEMPLOYED	82.7	86.1	85.3	88.2	74.0	79.3	77.0	79.6
NOT IN LABOR FORCE	92.7	93.9	94.2	95.2	82.2	85.5	82.5	84.1
<b>1988 ANNUAL AVERAGE</b>								
TOTAL CNP	93.8	95.2	94.9	96.1	85.6	88.7	83.6	86.1
EMPLOYED	94.9	96.2	95.6	96.8	88.5	91.5	85.4	87.7
UNEMPLOYED	83.3	86.8	85.9	88.9	75.4	80.5	76.7	80.3
NOT IN LABOR FORCE	92.8	94.2	94.3	95.5	83.1	86.0	81.5	84.0
<b>1989 ANNUAL AVERAGE</b>								
TOTAL CNP	94.1	95.5	95.3	96.4	85.8	89.0	84.7	87.0
EMPLOYED	95.2	96.5	96.0	97.1	88.8	91.7	86.6	89.0
UNEMPLOYED	83.9	87.1	86.2	88.8	77.0	82.5	75.1	78.6
NOT IN LABOR FORCE	93.1	94.4	94.7	95.7	82.8	85.9	82.6	84.6
<b>1990 ANNUAL AVERAGE</b>								
TOTAL CNP	94.2	95.5	95.3	96.5	86.1	88.8	84.5	86.6
EMPLOYED	95.3	96.6	96.0	97.2	89.4	91.8	86.3	88.4
UNEMPLOYED	85.0	88.0	87.9	90.4	75.3	80.0	77.0	80.4
NOT IN LABOR FORCE	93.0	94.3	94.6	95.6	83.2	85.8	82.4	84.1

TABLE 7 - PERCENTAGE OF ADULTS WITH A TELEPHONE BY LABOR FORCE STATUS

	RACE						HISPANIC ORIGIN	
	TOTAL		WHITE		BLACK		Unit	Avail
	Unit	Avail	Unit	Avail	Unit	Avail	Unit	Avail
<b>1991 ANNUAL AVERAGE</b>								
TOTAL CNP	94.3	95.7	95.5	96.6	86.3	89.1	85.5	87.7
EMPLOYED	95.6	96.8	96.3	97.3	89.8	92.4	87.5	89.6
UNEMPLOYED	86.4	89.5	88.3	91.0	78.9	84.1	78.2	81.6
NOT IN LABOR FORCE	93.1	94.4	94.7	95.8	82.6	85.3	83.5	85.4
<b>1992 ANNUAL AVERAGE</b>								
TOTAL CNP	94.7	95.9	95.8	96.8	86.9	89.8	87.8	89.7
EMPLOYED	95.8	97.0	96.5	97.5	90.1	92.8	89.5	91.6
UNEMPLOYED	88.1	90.3	90.0	91.8	81.2	85.0	83.4	85.8
NOT IN LABOR FORCE	93.6	94.8	95.2	96.1	83.6	86.5	85.8	87.4
<b>1993 ANNUAL AVERAGE</b>								
TOTAL CNP	95.0	96.1	96.0	97.0	87.5	90.0	88.2	89.9
EMPLOYED	96.1	97.1	96.8	97.6	90.6	92.8	89.7	91.5
UNEMPLOYED	88.6	90.6	90.7	92.3	80.9	84.7	85.0	87.1
NOT IN LABOR FORCE	93.8	94.9	95.3	96.2	84.5	87.0	86.1	87.6
<b>1994 ANNUAL AVERAGE</b>								
TOTAL CNP	94.5	95.9	95.6	96.7	87.9	91.0	87.3	89.2
EMPLOYED	95.6	96.8	96.3	97.3	90.4	93.2	88.5	90.4
UNEMPLOYED	87.8	90.8	89.8	92.2	81.1	86.7	84.1	86.5
NOT IN LABOR FORCE	93.4	94.8	94.8	95.9	85.4	88.5	85.7	87.6
<b>1995 ANNUAL AVERAGE</b>								
TOTAL CNP	95.0	96.1	95.9	96.8	89.1	91.4	88.0	89.6
EMPLOYED	95.8	96.7	96.5	97.2	91.2	93.2	88.9	90.4
UNEMPLOYED	88.8	91.7	90.8	93.1	82.3	87.4	84.4	87.2
NOT IN LABOR FORCE	93.4	94.4	94.8	95.7	84.9	87.3	86.0	87.7
<b>MARCH 96</b>								
TOTAL CNP	94.8	95.7	95.6	96.3	89.7	91.6	87.6	89.0
EMPLOYED	95.6	96.4	96.2	96.9	91.3	92.7	89.1	90.4
UNEMPLOYED	88.7	90.9	89.8	91.4	85.6	89.9	81.0	83.1
NOT IN LABOR FORCE	93.2	94.2	94.5	95.2	86.6	88.7	85.3	86.7
<b>JULY 96</b>								
TOTAL CNP	95.0	95.9	95.7	96.4	90.0	92.0	89.2	90.3
EMPLOYED	95.7	96.5	96.3	96.9	91.7	93.4	90.1	91.2
UNEMPLOYED	89.2	91.6	90.7	92.6	85.4	89.0	86.6	88.5
NOT IN LABOR FORCE	93.4	94.3	94.5	95.2	86.4	88.7	86.9	87.8
<b>NOVEMBER 96</b>								
TOTAL CNP	94.9	95.8	95.6	96.4	89.5	91.9	88.4	89.8
EMPLOYED	95.6	96.4	96.1	96.9	91.1	93.0	89.6	90.8
UNEMPLOYED	88.4	91.2	89.8	91.7	84.1	89.7	86.1	88.0
NOT IN LABOR FORCE	93.5	94.6	94.6	95.4	86.2	89.1	84.7	86.6

TABLE 7 - PERCENTAGE OF ADULTS WITH A TELEPHONE BY LABOR FORCE STATUS

	TOTAL		RACE				HISPANIC ORIGIN	
	Unit	Avail	Unit	Avail	Unit	Avail	Unit	Avail
<b>1996 ANNUAL AVERAGE</b>								
TOTAL CNP	94.9	95.8	95.6	96.4	89.7	91.8	88.4	89.7
EMPLOYED	95.6	96.4	96.2	96.9	91.4	93.0	89.6	90.8
UNEMPLOYED	88.8	91.1	90.1	91.9	85.0	89.5	84.6	86.5
NOT IN LABOR FORCE	93.4	94.4	94.5	95.3	86.4	88.8	85.6	87.0
<b>MARCH 97</b>								
TOTAL CNP	94.8	95.8	95.7	96.5	89.1	91.4	88.5	90.3
EMPLOYED	95.5	96.4	96.2	96.9	90.6	92.5	89.5	91.3
UNEMPLOYED	88.2	91.1	89.9	91.7	82.8	89.3	84.3	86.6
NOT IN LABOR FORCE	93.4	94.5	94.6	95.5	86.9	88.8	86.0	87.7
<b>JULY 97</b>								
TOTAL CNP	95.1	95.9	95.8	96.5	89.9	91.7	88.6	90.0
EMPLOYED	95.8	96.6	96.4	97.0	91.9	93.3	89.7	91.0
UNEMPLOYED	88.3	90.7	90.1	92.1	82.7	86.5	80.7	82.9
NOT IN LABOR FORCE	93.4	94.3	94.8	95.5	86.2	88.2	87.0	88.3
<b>NOVEMBER 97</b>								
TOTAL CNP	94.8	95.8	95.6	96.4	88.9	91.3	88.7	90.3
EMPLOYED	95.4	96.4	96.1	96.9	90.7	92.8	89.4	91.0
UNEMPLOYED	86.8	89.5	89.1	90.4	79.1	85.6	82.2	83.5
NOT IN LABOR FORCE	93.7	94.5	94.9	95.6	86.2	88.3	87.8	89.2
<b>1997 ANNUAL AVERAGE</b>								
TOTAL CNP	94.9	95.8	95.7	96.5	89.3	91.5	88.6	90.2
EMPLOYED	95.6	96.5	96.2	96.9	91.1	92.9	89.5	91.1
UNEMPLOYED	87.8	90.4	89.7	91.4	81.5	87.1	82.4	84.3
NOT IN LABOR FORCE	93.5	94.4	94.8	95.5	86.4	88.4	86.9	88.4
<b>MARCH 98</b>								
TOTAL CNP	95.1	95.9	95.7	96.5	90.5	91.8	90.1	91.4
EMPLOYED	95.7	96.4	96.2	96.8	92.0	93.2	90.6	91.9
UNEMPLOYED	88.3	90.5	90.6	92.6	80.9	83.9	84.8	88.2
NOT IN LABOR FORCE	94.0	94.7	95.0	95.6	88.4	89.5	89.7	90.6

TABLE 8  
CRITICAL VALUES FOR DETERMINING SIGNIFICANT DIFFERENCES BY STATE

	In Unit	Available
UNITED STATES	0.5%	0.5%
ALABAMA	3.7%	3.5%
ALASKA	5.4%	4.6%
ARIZONA	4.6%	4.4%
ARKANSAS	5.9%	4.8%
CALIFORNIA	1.6%	1.4%
COLORADO	3.3%	3.0%
CONNECTICUT	2.8%	1.8%
DELAWARE	3.2%	2.7%
DIST OF COLUMBIA	3.8%	2.8%
FLORIDA	2.9%	2.8%
GEORGIA	5.0%	4.6%
HAWAII	2.7%	2.0%
IDAHO	4.2%	3.4%
ILLINOIS	2.1%	1.8%
INDIANA	3.4%	2.7%
IOWA	3.0%	2.3%
KANSAS	2.5%	2.3%
KENTUCKY	5.4%	4.9%
LOUISIANA	4.3%	3.8%
MAINE	3.8%	3.3%
MARYLAND	3.2%	2.7%
MASSACHUSETTS	2.5%	2.3%
MICHIGAN	2.6%	2.2%
MINNESOTA	2.7%	2.4%
MISSISSIPPI	5.2%	4.7%
MISSOURI	3.6%	2.9%
MONTANA	5.3%	4.3%
NEBRASKA	3.3%	3.0%
NEVADA	5.0%	4.3%
NEW HAMPSHIRE	4.0%	3.4%
NEW JERSEY	2.4%	2.1%
NEW MEXICO	5.8%	4.5%
NEW YORK	2.1%	1.9%
NORTH CAROLINA	4.0%	3.5%
NORTH DAKOTA	3.8%	3.5%
OHIO	2.2%	1.9%
OKLAHOMA	3.9%	3.6%
OREGON	3.5%	3.0%
PENNSYLVANIA	1.6%	1.3%
RHODE ISLAND	3.0%	2.5%
SOUTH CAROLINA	6.3%	5.4%
SOUTH DAKOTA	3.7%	3.5%
TENNESSEE	5.0%	4.3%
TEXAS	2.6%	2.3%
UTAH	4.7%	4.6%
VERMONT	5.3%	4.6%
VIRGINIA	4.0%	3.5%
WASHINGTON	4.1%	3.9%
WEST VIRGINIA	4.5%	4.0%
WISCONSIN	3.2%	3.0%
WYOMING	4.7%	3.9%

TABLE 9  
CRITICAL VALUES FOR DETERMINING SIGNIFICANT DIFFERENCES BY INCOME

	TOTAL		WHITE		BLACK		HISPANIC ORIGIN	
	In Unit	Available	In Unit	Available	In Unit	Available	In Unit	Available
TOTAL	0.5%	0.5%	0.6%	0.5%	2.2%	2.0%	4.9%	4.5%
UNDER \$5,000	1.3%	1.3%	1.6%	1.4%	3.5%	3.3%	9.4%	9.0%
\$5,000 - \$7,499	1.7%	1.5%	1.8%	1.6%	5.6%	5.1%	11.8%	11.0%
\$7,500 - \$9,999	1.9%	1.7%	2.0%	1.8%	7.2%	6.5%	14.6%	13.5%
\$10,000 - \$12,499	1.9%	1.6%	1.9%	1.7%	7.3%	6.5%	16.2%	14.9%
\$12,500 - \$14,999	2.1%	1.8%	2.1%	1.8%	8.7%	7.6%	18.4%	16.8%
\$15,000 - \$17,499	2.2%	1.9%	2.2%	2.0%	9.2%	8.2%	19.8%	18.0%
\$17,500 - \$19,999	2.3%	2.0%	2.3%	2.0%	10.7%	9.3%	20.5%	18.6%
\$20,000 - \$24,999	1.7%	1.5%	1.7%	1.5%	9.0%	7.7%	16.6%	15.0%
\$25,000 - \$29,999	1.9%	1.7%	1.9%	1.6%	10.9%	9.4%	21.8%	19.6%
\$30,000 - \$34,999	2.0%	1.7%	2.0%	1.7%	12.5%	10.7%	24.5%	21.9%
\$35,000 - \$39,999	2.4%	2.1%	2.4%	2.0%	15.4%	13.1%	28.4%	25.4%
\$40,000 - \$49,999	2.2%	1.9%	2.1%	1.8%	15.1%	12.8%	28.7%	25.6%
\$50,000 - \$74,999	2.3%	1.9%	2.2%	1.9%	16.3%	13.8%	32.3%	28.7%
\$75,000 +	3.5%	3.0%	3.3%	2.8%	44.6%	37.9%	54.4%	48.6%

TABLE 10  
CRITICAL VALUES FOR DETERMINING SIGNIFICANT DIFFERENCES BY HOUSEHOLD SIZE

	TOTAL		WHITE		BLACK		HISPANIC ORIGIN	
	In Unit	Available	In Unit	Available	In Unit	Available	In Unit	Available
TOTAL	0.5%	0.5%	0.6%	0.5%	2.2%	2.0%	4.9%	4.5%
1 PERSON	1.1%	1.0%	1.1%	1.0%	4.1%	3.7%	11.6%	10.9%
2 - 3	0.8%	0.7%	0.8%	0.7%	3.5%	3.0%	7.7%	7.0%
4 - 5	1.1%	1.0%	1.2%	1.0%	4.7%	4.1%	9.1%	8.2%
6 +	2.6%	2.2%	2.8%	2.4%	8.1%	7.2%	14.4%	13.0%

TABLE 11  
CRITICAL VALUES FOR DETERMINING SIGNIFICANT DIFFERENCES BY HOUSEHOLDER'S AGE

	TOTAL		WHITE		BLACK		HISPANIC ORIGIN	
	In Unit	Available	In Unit	Available	In Unit	Available	In Unit	Available
TOTAL	0.5%	0.5%	0.6%	0.5%	2.2%	2.0%	4.9%	4.5%
15-24 YRS OLD	1.6%	1.5%	1.7%	1.5%	6.0%	5.7%	11.1%	10.7%
25-54 YRS OLD	0.7%	0.6%	0.7%	0.6%	2.8%	2.5%	6.0%	5.4%
55-59 YRS OLD	2.1%	1.8%	2.1%	1.8%	9.0%	7.8%	21.1%	19.0%
60-64 YRS OLD	2.1%	1.8%	2.1%	1.8%	9.5%	8.2%	24.6%	22.1%
65-69 YRS OLD	2.3%	2.0%	2.3%	1.9%	10.5%	9.0%	30.7%	27.6%
70-99 YRS OLD	1.6%	1.4%	1.6%	1.4%	7.9%	6.7%	23.4%	21.1%

TABLE 12  
CRITICAL VALUES FOR DETERMINING SIGNIFICANT DIFFERENCES BY LABOR FORCE STATUS

	TOTAL		WHITE		BLACK		HISPANIC ORIGIN	
	In Unit	Available	In Unit	Available	In Unit	Available	In Unit	Available
TOTAL CNP	0.8%	0.7%	0.8%	0.7%	3.3%	2.9%	7.5%	6.8%
EMPLOYED	1.0%	0.9%	1.0%	0.9%	4.1%	3.5%	10.1%	9.1%
UNEMPLOYED	3.2%	2.9%	3.5%	3.1%	9.7%	8.7%	26.2%	24.1%
NOT IN LABOR FORCE	1.3%	1.1%	1.3%	1.1%	5.1%	4.5%	12.2%	11.1%



## Customer Response

Publication: Telephone Subscribership in the United States (Data Through March 1998)

You can help us provide the best possible information to the public by completing this form and returning it to the Industry Analysis Division of the FCC's Common Carrier Bureau.

1. Please check the category that best describes you:

- press
- current telecommunications carrier
- potential telecommunications carrier
- business customer evaluating vendors/service options
- consultant, law firm, lobbyist
- other business customer
- academic/student
- residential customer
- FCC employee
- other federal government employee
- state or local government employee
- Other (please specify) \_\_\_\_\_

2. Please rate the report:   Excellent   Good   Satisfactory   Poor   No opinion

- |                      |                              |                              |                              |                              |                              |
|----------------------|------------------------------|------------------------------|------------------------------|------------------------------|------------------------------|
| Data accuracy        | ( <input type="checkbox"/> ) | ( <input type="checkbox"/> ) | ( <input type="checkbox"/> ) | ( <input type="checkbox"/> ) | ( <input type="checkbox"/> ) |
| Data presentation    | ( <input type="checkbox"/> ) | ( <input type="checkbox"/> ) | ( <input type="checkbox"/> ) | ( <input type="checkbox"/> ) | ( <input type="checkbox"/> ) |
| Timeliness of data   | ( <input type="checkbox"/> ) | ( <input type="checkbox"/> ) | ( <input type="checkbox"/> ) | ( <input type="checkbox"/> ) | ( <input type="checkbox"/> ) |
| Completeness of data | ( <input type="checkbox"/> ) | ( <input type="checkbox"/> ) | ( <input type="checkbox"/> ) | ( <input type="checkbox"/> ) | ( <input type="checkbox"/> ) |
| Text clarity         | ( <input type="checkbox"/> ) | ( <input type="checkbox"/> ) | ( <input type="checkbox"/> ) | ( <input type="checkbox"/> ) | ( <input type="checkbox"/> ) |
| Completeness of text | ( <input type="checkbox"/> ) | ( <input type="checkbox"/> ) | ( <input type="checkbox"/> ) | ( <input type="checkbox"/> ) | ( <input type="checkbox"/> ) |

3. Overall, how do you rate this report?   Excellent   Good   Satisfactory   Poor   No opinion

()   ()   ()   ()   ()

4. How can this report be improved?

---



---



---

5. May we contact you to discuss possible improvements?

Name:

Telephone #:

To discuss this report contact Alex Belinfante at 202-418-0944		
Fax this response to	or	Mail this response to
202-418-0520		FCC/CCB/IAD Mail Stop 1600 F Washington, DC 20554