

DEPARTMENT OF LABOR AND INDUSTRIAL RELATIONS

**News Release**

**LINDA LINGLE**  
GOVERNOR

---

NELSON B. BEFITEL, DIRECTOR  
COLLEEN Y. LaCLAIR, DEPUTY DIRECTOR  
Phone: (808) 586-8844  
Fax: (808) 586-9099

---

**MR 2005 15**

For Immediate Release: September 15, 2005

**VIBRANT ECONOMY CONTINUES TO DRIVE HAWAII'S  
UNEMPLOYMENT RATE DOWN**

**38,800 New Jobs created During the Lingle-Aiona Administration**

**HONOLULU-** The Department of Labor and Industrial Relations ("DLIR") announced today that Hawaii's seasonally adjusted unemployment rate for August was 2.6 percent, a decline from 2.7 percent in July. Similarly, the U.S. seasonally adjusted unemployment rate also dipped by a 0.1 percentage point over-the-month, going from 5.0 percent in July to 4.9 percent in August. One year ago, Hawaii's seasonally adjusted unemployment rate stood at 3.1 percent, while the U.S. seasonally adjusted unemployment rate was 5.4 percent.

Since January 2004, Hawaii's seasonally adjusted unemployment rate has been at least two percentage points lower than the national seasonally adjusted unemployment rate. August also marked the sixth consecutive month that Hawaii had a seasonally adjusted unemployment rate of below 3 percent.

Hawaii's seasonally adjusted labor force totaled 636,500 in August, and was comprised of 619,700 employed and 16,800 unemployed. Compared to one year ago, the number of employed individuals has expanded by 22,200, or 3.7 percent, while the number of unemployed individuals has contracted by 2,350, or 12.3 percent.

In another measure of employment, total nonagricultural jobs rose over-the-month by 2,300, or 0.4 percent, to 602,600. Over-the-year, within the private sector, the number of jobs increased by 17,400, or 3.8 percent, while the overall jobcount expanded by 18,200, or 3.1 percent. Since December 2002, total nonagricultural jobs rose by 38,800 from 563,800 to a historical high of 602,600 jobs.

In August over July, within the seasonally adjusted industry series, notable job gains were experienced in government (+1,200), Trade, Transportation, & Utilities (+600), Leisure & Hospitality (+500), and Other Services (+300). Most of the rise in the public sector was concentrated in the Department of Education, as the shifting of school year schedules resulted in the faster return of faculty and support staff. The hiring of cruise ship workers contributed to much of the rise in Trade, Transportation, & Utilities. Leisure & Hospitality benefited from continuing strong visitor arrivals. The balance of the seasonally adjusted industry series showed little change over-the-month, with Manufacturing adding 200 jobs, and Education & Health Services and Construction dipping by 100 jobs each.

"The Lingle-Aiona Administration has overseen a vibrant economy that has created more than 38,000 new jobs," said Nelson Befitel, Director of Labor and Industrial Relations. "We have witnessed extraordinary job growth for the last 33 months, with more of Hawaii's residents working than ever before."

**Unemployment Trust Fund**

To keep the public informed on the status of the state's Unemployment Compensation Fund (Fund), from which unemployment benefits are paid to qualified claimants, the following is the current status of the Fund and its projected status at the end of the year.

Fund Balance as of end of August 2005:	\$440,846,260
Taxes received year-to-date through end of August:	\$99,629,476
Interest received year-to-date through end of August:	\$11,035,264
Benefits paid year-to-date through end of August:	\$57,783,363
Current Tax Schedule:	Schedule "C"

Calendar year 2005 Fund and Tax Schedule projections, as of the end of August:

Fund Balance, end of 2005:	\$452,400,000 (projected)
Taxes for Calendar Year 2005:	\$127,300,000 (projected)
Interest for Calendar Year 2005:	\$23,000,000 (projected)
Benefits for Calendar Year 2005:	\$85,900,000 (projected)
Tax Schedule for Calendar Year 2006:	Schedule "C" (projected)

For comparison purposes, in calendar year 2004, the Fund collected \$124.6 million in taxes and paid out \$104.7 million in benefits.

**####**

For more information, contact:  
James P. Hardway  
Assistant to the Director  
Phone: (808) 586-8845  
Fax: (808) 586-9099  
Email: [jhardway@hawaii.gov](mailto:jhardway@hawaii.gov)

**LABOR FORCE AND JOBCOUNT ESTIMATES**

**August 2005 Report, Statewide**

	DEPARTMENT OF LABOR -- LABOR FORCE ESTIMATES							
	STATEWIDE							
	<b>(NOT SEASONALLY ADJUSTED)</b>							
	Aug-05	Jul-05	Aug-04	CHANGE FROM ONE MONTH AGO		CHANGE FROM ONE YEAR AGO		
CIVILIAN LABOR FORCE	638.0	642.2	615.6	-4.2	-0.7%	22.4	3.6%	
TOTAL EMPLOYED	620.8	622.9	596.0	-2.1	-0.3%	24.8	4.2%	
UNEMPLOYED	17.2	19.2	19.6	-2.0	-10.4%	-2.4	-12.2%	
percent of Labor Force	2.7%	3.0%	3.2%					
Total Nonfarm	596.0	594.6	579.2	1.4	0.2%	16.9	2.9%	
Total Private	480.5	480.4	464.6	0.1	0.0%	15.9	3.4%	
Goods Producing	47.9	48.1	45.5	-0.2	-0.5%	2.4	5.2%	
Service-Providing	548.1	546.5	533.7	1.6	0.3%	14.5	2.7%	
Private Service-Providing	432.6	432.3	419.1	0.4	0.1%	13.5	3.2%	
Nat. Res & Construct	32.5	32.8	30.0	-0.3	-0.9%	2.5	8.3%	
Construction of Buildings	10.2	10.5	9.6	-0.3	-2.9%	0.5	3.5%	
Special Trade Contractors	17.7	17.7	16.0	0.0	-2.7%	1.7	5.6%	
Manufacturing	15.4	15.3	15.5	0.1	0.4%	-0.1	-0.6%	
Durable Goods	4.3	4.3	4.4	0.0	0.3%	0.0	-0.6%	
Non-Durable Goods	11.1	11.0	11.1	0.0	0.4%	-0.1	-0.6%	
Trade, Transportation,	117.7	117.1	112.4	0.6	0.5%	5.3	4.7%	
Wholesale Trade	17.5	17.5	17.0	0.1	0.3%	0.5	3.2%	
Retail Trade	69.3	69.1	66.9	0.2	0.3%	2.4	3.6%	
Food and Beverage Sto	13.0	12.9	12.7	0.1	0.6%	0.3	2.1%	
Grocery Stores	10.9	10.8	10.6	0.1	0.9%	0.2	2.2%	
Clothing and Clothing	11.3	11.2	10.0	0.0	0.3%	1.3	12.6%	
General Merchandise S	12.4	12.3	11.4	0.1	1.1%	1.0	8.9%	
Department Stores	9.3	9.2	8.4	0.1	1.0%	0.9	10.5%	
Trans,Warehouse, Util	30.8	30.5	28.4	0.3	1.0%	2.4	8.4%	
Utilities	2.9	2.9	2.8	0.0	-0.8%	0.1	4.2%	
Transport & Warehouse	27.9	27.6	25.7	0.3	1.2%	2.3	8.8%	
Air Transportation	10.3	10.3	10.3	0.0	0.3%	0.0	0.0%	
Information	10.6	10.5	11.0	0.1	0.7%	-0.5	-4.1%	
Telecommunications	3.8	3.8	3.7	0.0	-0.6%	0.1	1.5%	
Financial Activities	29.4	29.4	28.8	0.0	0.1%	0.6	1.9%	
Finance and Insurance	16.5	16.5	16.4	0.0	0.2%	0.1	0.8%	
Real Estate and Renta	12.9	12.9	12.4	0.0	0.0%	0.4	3.4%	
Professional and Busin	74.3	73.9	71.2	0.4	0.5%	3.1	4.3%	
Professional, Scienti	23.5	23.5	22.9	0.1	0.3%	0.6	2.8%	
Management of Compani	7.2	7.1	6.9	0.0	0.4%	0.3	3.8%	
Administrative and Su	43.6	43.3	41.4	0.3	0.7%	2.2	5.3%	
Employment Services	16.4	16.1	14.9	0.2	1.4%	1.5	10.0%	
Educational and Health	68.5	69.3	66.6	-0.7	-1.1%	1.9	2.9%	
Educational Services	12.5	12.8	12.3	-0.3	-2.4%	0.2	1.8%	
Elementary and Second	6.8	7.1	6.7	-0.3	-3.9%	0.1	1.6%	
Health Care and Socia	56.0	56.4	54.3	-0.4	-0.7%	1.7	3.2%	
Ambulatory Health Car	22.1	22.0	21.5	0.1	0.3%	0.6	2.6%	
Hospitals	14.2	14.3	14.1	0.0	-0.3%	0.2	1.1%	
Nursing and Residenti	6.7	6.7	6.3	0.0	0.2%	0.4	6.3%	
Social Assistance	13.0	13.5	12.4	-0.5	-3.3%	0.6	4.8%	
Leisure and Hospitalit	107.6	107.5	104.8	0.1	0.1%	2.8	2.7%	
Arts, Entertainment,	11.7	11.7	11.6	0.0	0.0%	0.1	1.1%	
Accommodation and Foo	95.9	95.7	93.2	0.1	0.1%	2.7	2.9%	
Accommodation	39.1	39.1	38.1	0.0	-0.1%	1.0	2.7%	
Food Services and Dri	56.8	56.6	55.1	0.2	0.3%	1.6	3.0%	
Full-Service Restaura	29.3	29.1	28.3	0.2	0.5%	0.9	3.3%	
Other Services	24.6	24.7	24.3	-0.1	-0.3%	0.3	1.2%	
Government	115.5	114.3	114.6	1.2	1.1%	0.9	0.8%	
Federal Government	31.2	31.3	31.7	-0.1	-0.4%	-0.5	-1.5%	
Ship Building & Repai	4.2	4.2	4.3	0.0	-0.8%	-0.1	-2.2%	
Department of Defense	16.5	16.7	16.8	-0.2	-1.0%	-0.2	-1.3%	
State Government	66.5	65.0	64.9	1.5	2.3%	1.6	2.4%	
State Govt. Education	42.7	41.3	41.5	1.4	3.3%	1.2	3.0%	
Local Government	17.8	18.0	18.0	-0.2	-0.9%	-0.2	-1.0%	

### Not Seasonally Adjusted Non-Ag. Jobs

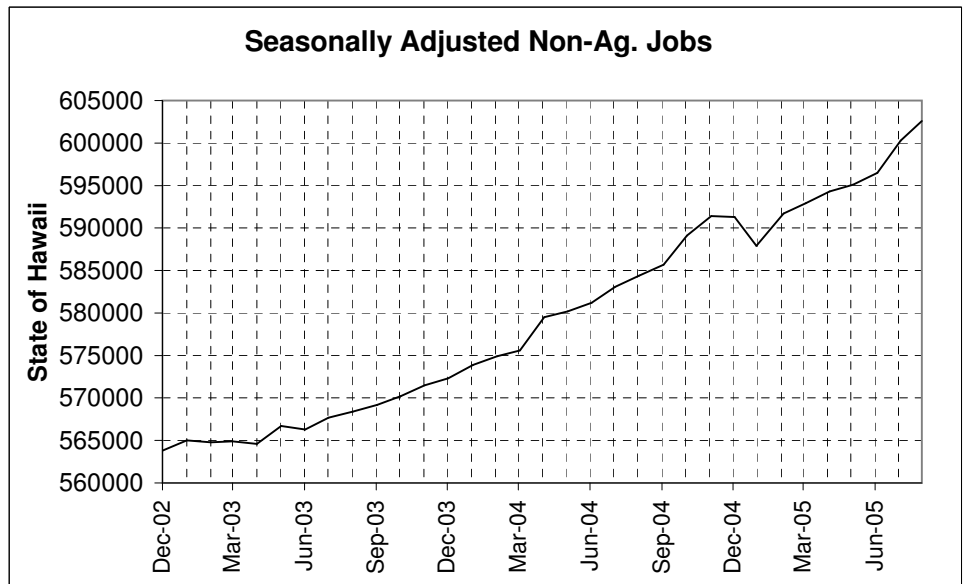
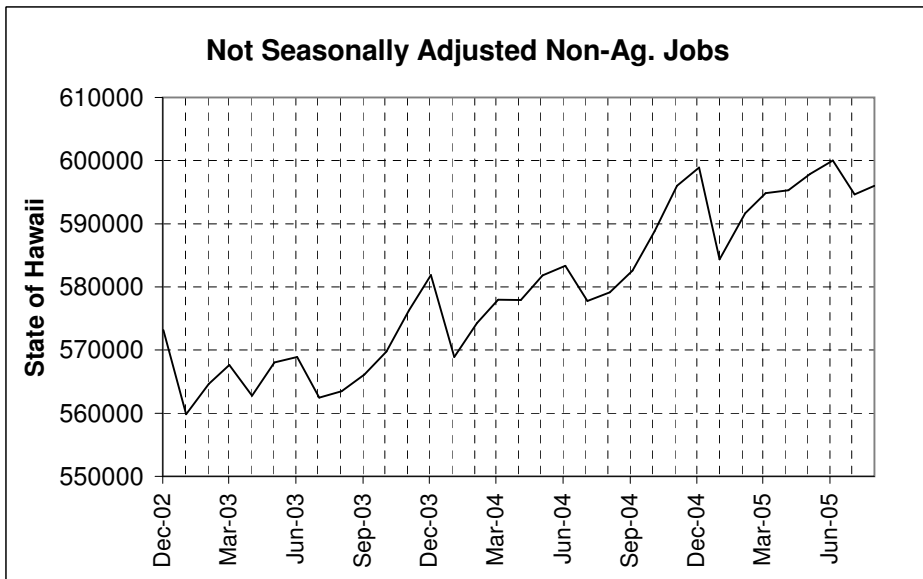
	Aug-05	Aug-04*	Dec-02
NAT. RESOURCES, MINING & CONSTR.	32,500	30,000	27,200
MANUFACTURING	15,400	15,500	15,000
TRADE, TRANSPORTATION & UTILITIES	117,650	112,350	111,000
INFORMATION	10,600	11,050	11,700
FINANCIAL ACTIVITIES	29,400	28,850	28,350
PROFESSIONAL & BUSINESS SERVICES	74,300	71,200	70,600
EDUCATIONAL & HEALTH SERVICES	68,550	66,600	64,250
LEISURE & HOSPITALITY	107,600	104,800	98,550
OTHER SERVICES	24,550	24,300	23,950
GOVERNMENT	115,500	114,550	122,500
<b>TOTAL</b>	<b>596,000</b>	<b>579,150</b>	<b>573,150</b>

\* BENCHMARKED DATA

### Seasonally Adjusted Non-Ag. Jobs

	Aug-05	Aug-04**	Dec-02
NAT. RESOURCES, MINING & CONSTR. **	32,500	29,400	27,200
MANUFACTURING **	15,400	15,500	14,900
TRADE, TRANSPORTATION & UTILITIES	117,900	112,500	107,600
EDUCATIONAL AND HEALTH SERVICES	69,500	67,400	63,700
LEISURE & HOSPITALITY	107,400	104,100	98,200
OTHER SERVICES **	24,600	24,200	23,900
GOVERNMENT	121,300	120,500	119,300
<b>TOTAL</b>	<b>602,600</b>	<b>584,400</b>	<b>563,800</b>

\*\* NEW SEASONALLY ADJUSTED SERIES



### Not Seasonally Adjusted Non-Ag. Jobs

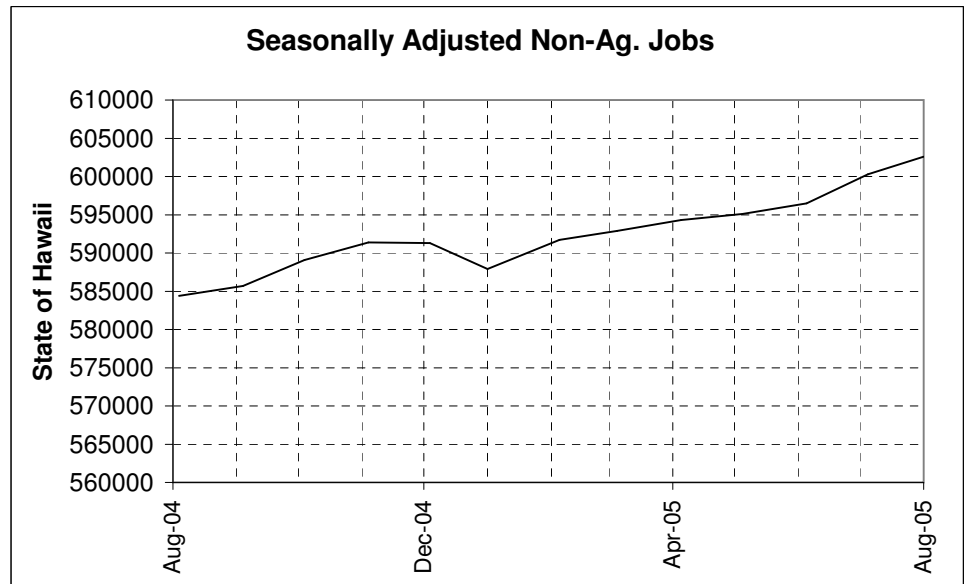
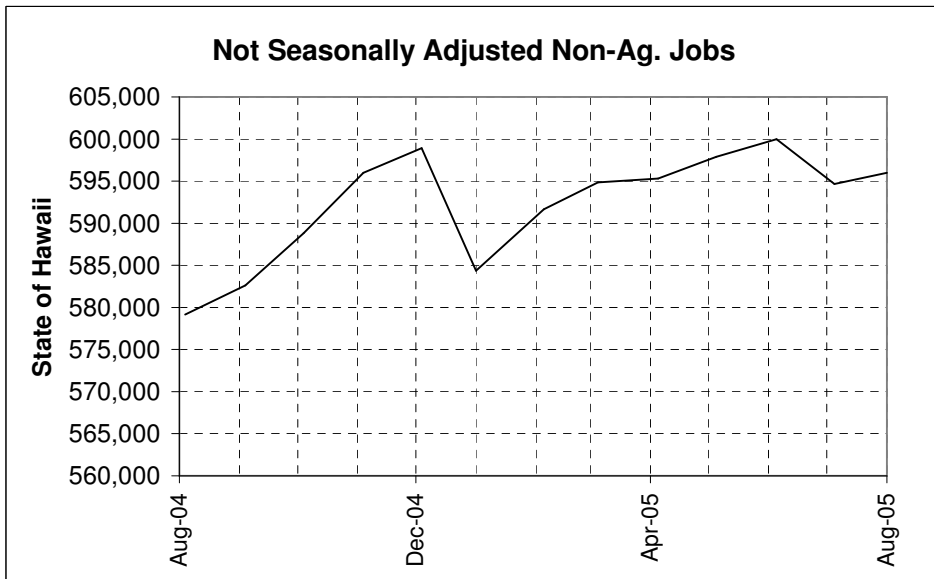
	Aug-05	Jul-05	Aug-04
NAT. RESOURCES, MINING & CONSTR.	32,500	32,800	30,000
MANUFACTURING	15,400	15,350	15,500
TRADE, TRANSPORTATION & UTILITIES	117,650	117,100	112,350
INFORMATION	10,600	10,500	11,050
FINANCIAL ACTIVITIES	29,400	29,350	28,850
PROFESSIONAL & BUSINESS SERVICES	74,300	73,900	71,200
EDUCATIONAL & HEALTH SERVICES	68,550	69,250	66,600
LEISURE & HOSPITALITY	107,600	107,450	104,800
OTHER SERVICES	24,550	24,650	24,300
GOVERNMENT	115,500	114,300	114,550
<b>TOTAL</b>	<b>596,000</b>	<b>594,650</b>	<b>579,150</b>

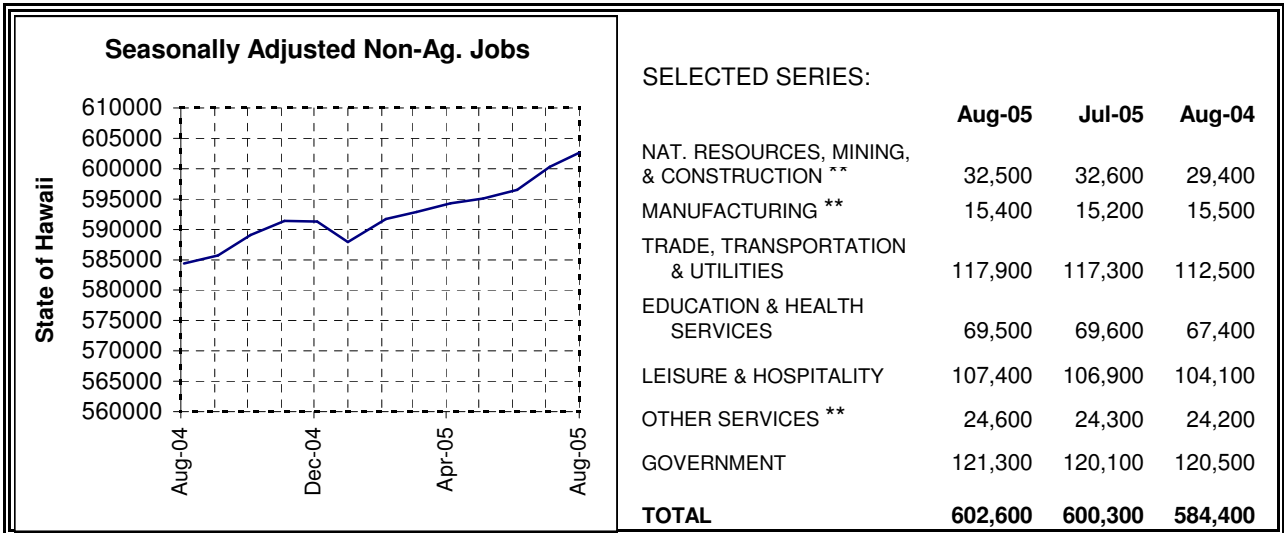
\* BENCHMARKED DATA

### Seasonally Adjusted Non-Ag. Jobs

	Aug-05	Jul-05	Aug-04
NAT. RESOURCES, MINING & CONSTR. **	32,500	32,600	29,400
MANUFACTURING **	15,400	15,200	15,500
TRADE, TRANSPORTATION & UTILITIES	117,900	117,300	112,500
EDUCATIONAL AND HEALTH SERVICES	69,500	69,600	67,400
LEISURE & HOSPITALITY	107,400	106,900	104,100
OTHER SERVICES **	24,600	24,300	24,200
GOVERNMENT	121,300	120,100	120,500
<b>TOTAL</b>	<b>602,600</b>	<b>600,300</b>	<b>584,400</b>

\*\* NEW SEASONALLY ADJUSTED SERIES

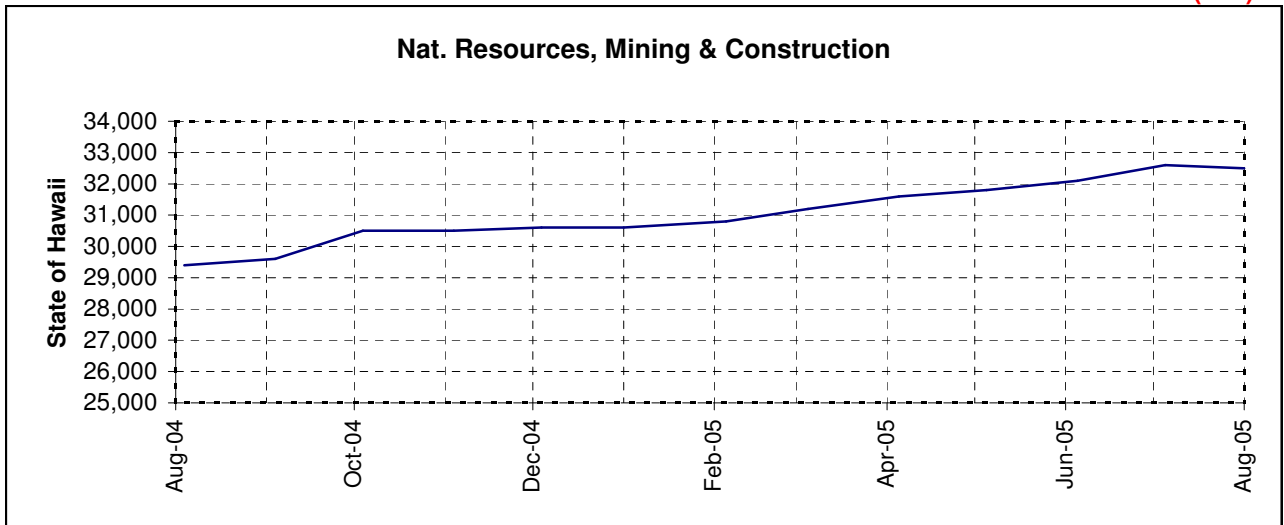




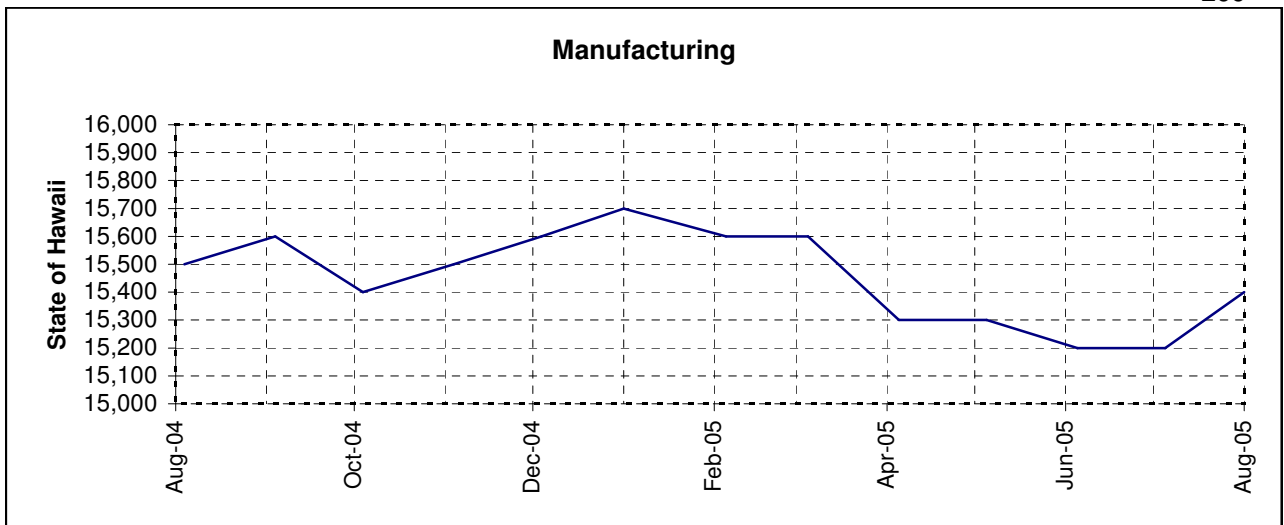
Jul-05 - Aug-05 (+2300)

\* BENCHMARKED DATA; \*\* NEW SEASONALLY ADJUSTED SERIES

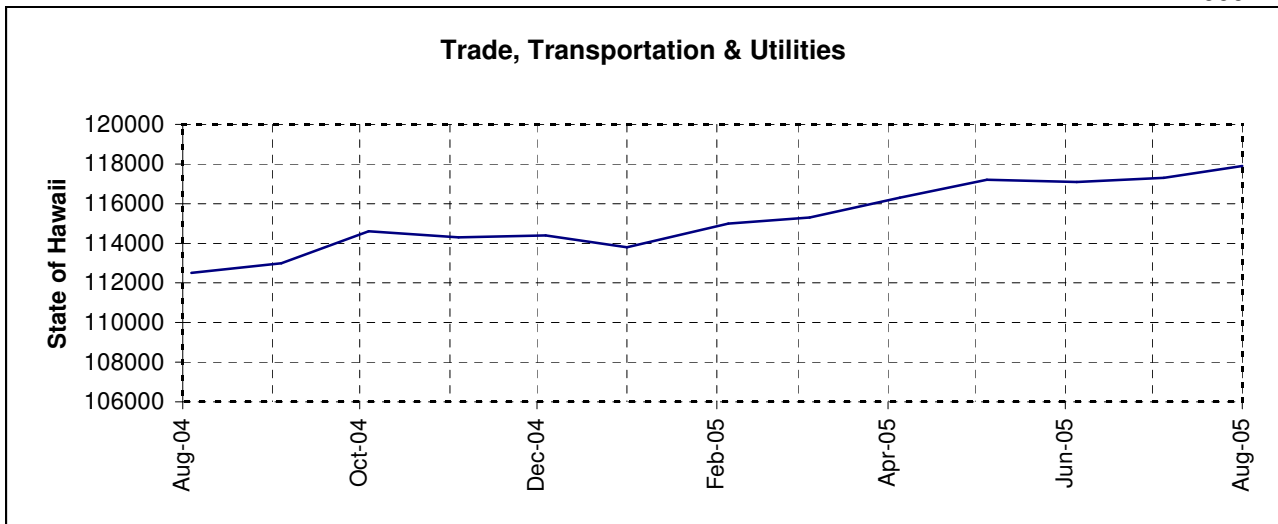
(100)



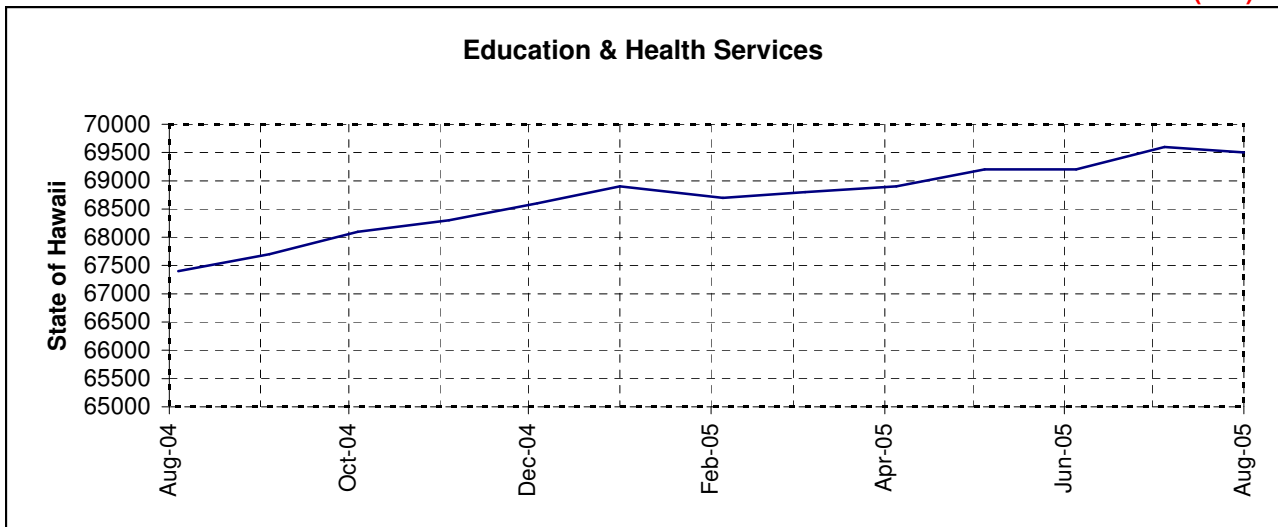
200



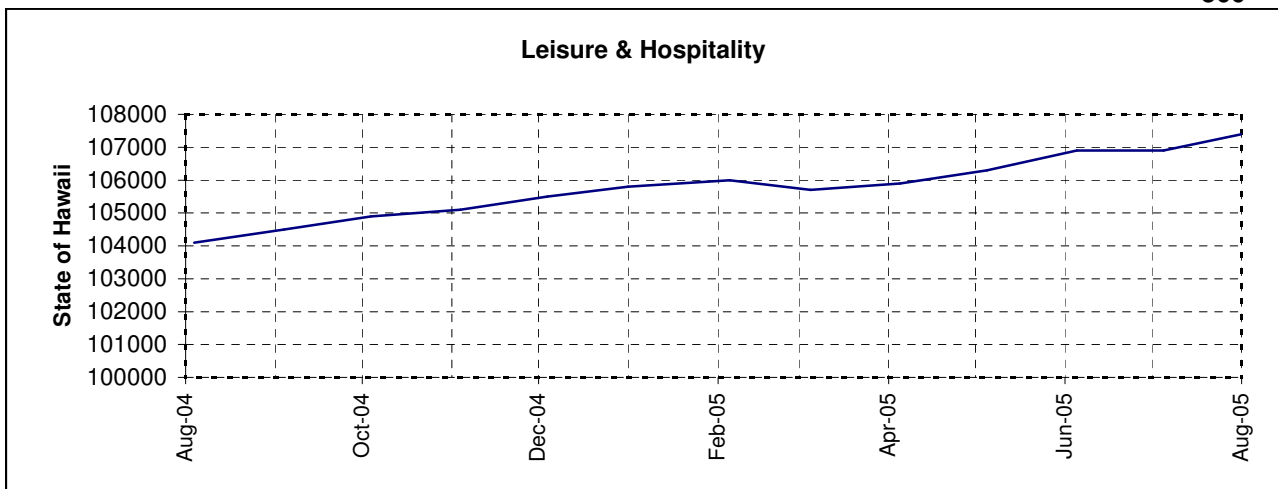
600



(100)

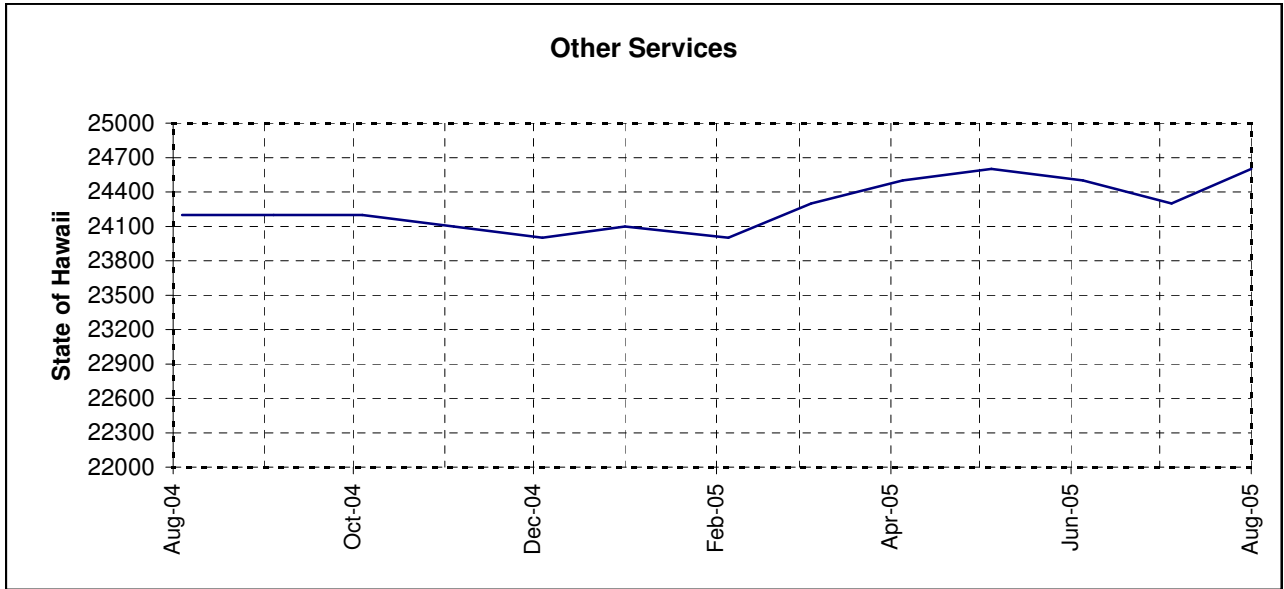


500

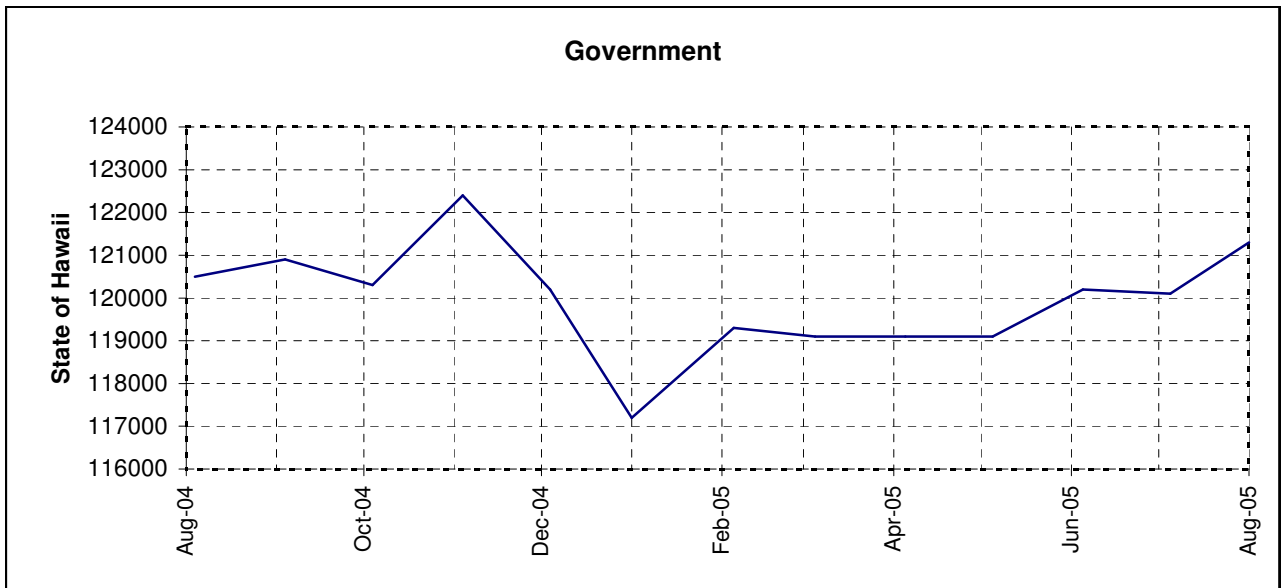




300



1200



**UNEMPLOYMENT RATES- NOT SEASONALLY ADJUSTED**

**UNEMPLOYMENT RATES- SEASONALLY ADJUSTED**

	AUG 2005	JUL 2005	AUG 2004
<b>STATE</b>	<b>2.7</b>	<b>3.0</b>	<b>3.2</b>
HONOLULU	2.6	2.9	3.1
HAWAII COUNTY	3.4	3.8	3.9
KAUAI	2.5	2.9	3.3
MAUI COUNTY	2.6	2.7	3.0
Maui Island	2.4	2.5	2.7
Molokai	9.3	10.3	12.2
Lanai	0.6	0.5	2.2
<b>U. S.</b>	<b>4.9</b>	<b>5.2</b>	<b>5.4</b>

	AUG 2005	JUL 2005	AUG 2004
<b>STATE</b>	<b>2.6</b>	<b>2.7</b>	<b>3.1</b>
<b>U. S.</b>	<b>4.9</b>	<b>5.0</b>	<b>5.4</b>

	<u>Aug 2005</u>	<u>Jul 2005</u>	<u>Aug 2004</u>
Labor Force	636,500	634,250	616,650
Employment	619,700	617,100	597,450
Unemployment	16,800	17,150	19,150

\*\* totals may not add up due to rounding

	Aug 2004	Sep	Oct	Nov	Dec	Jan	Feb	Mar	Apr	May	Jun	Jul	Aug 2005
U. S.	5.4	5.1	5.1	5.2	5.1	5.7	5.8	5.4	4.9	4.9	5.2	5.2	4.9
Hawaii	3.2	3.3	3.0	3.0	2.7	2.8	2.7	2.6	2.8	2.4	3.3	3.0	2.7

	Aug 2004	Sep	Oct	Nov	Dec	Jan	Feb	Mar	Apr	May	Jun	Jul	Aug 2005
U. S.	5.4	5.4	5.5	5.4	5.4	5.2	5.4	5.2	5.2	5.1	5.0	5.0	4.9
Hawaii	3.1	3.1	3.1	3.1	3.0	2.9	3.0	2.8	2.9	2.7	2.7	2.7	2.6

