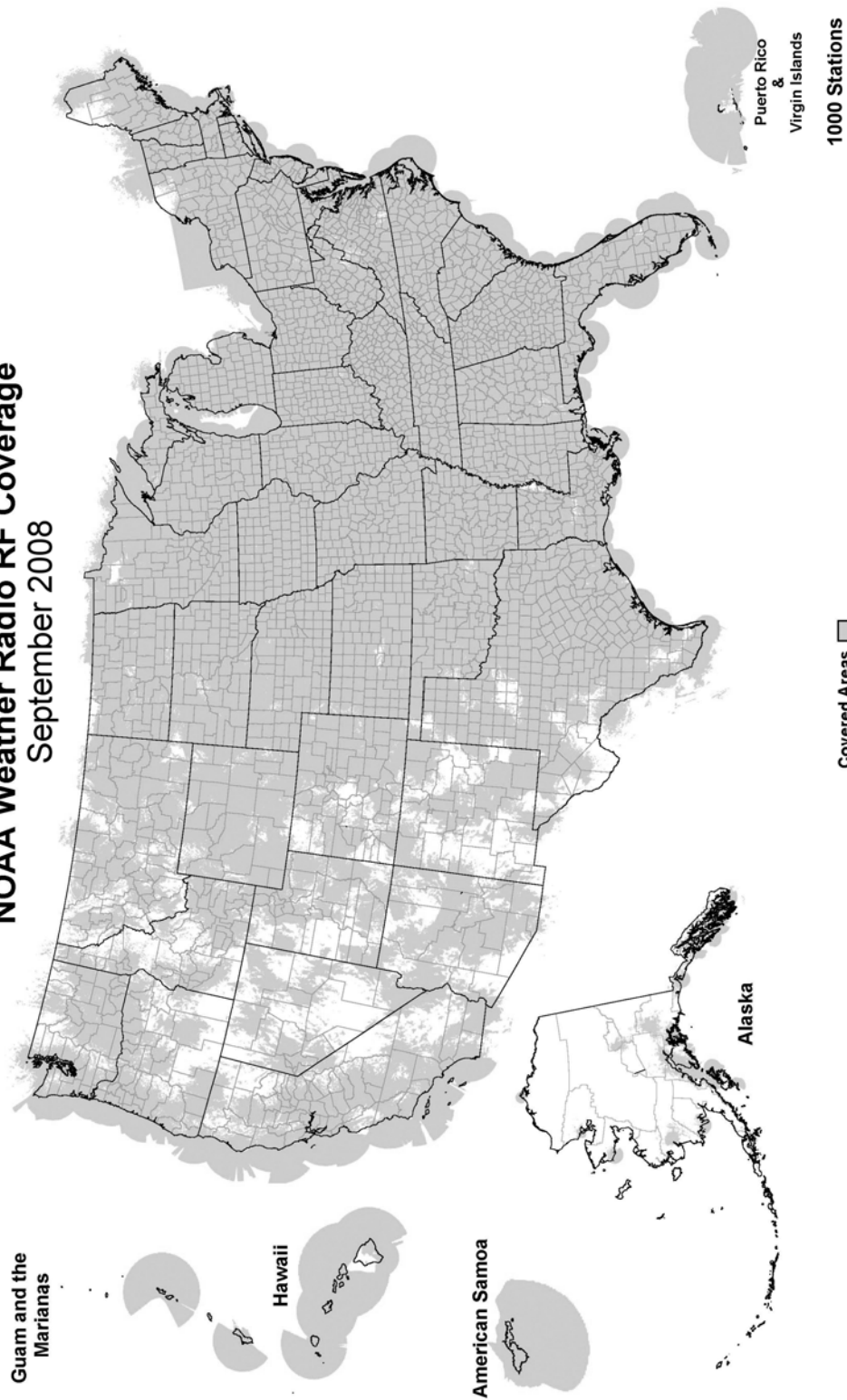
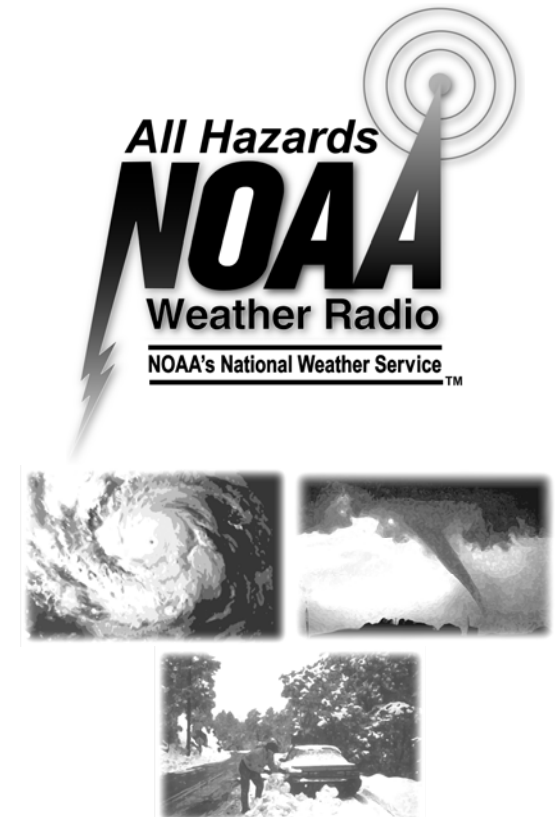


**NOAA Weather Radio RF Coverage  
September 2008**



NOAA/PA 94062  
Rev. Sep 2008



**The Voice of NOAA's  
National Weather Service**

**< 1000 Transmitters >**

**Broadcasting Continuous  
Weather Information on the  
Following Frequencies:**

- 162.400 MHz
- 162.425 MHz
- 162.450 MHz
- 162.475 MHz
- 162.500 MHz
- 162.525 MHz
- 162.550 MHz

U.S. Department of Commerce  
National Oceanic and Atmospheric Administration  
National Weather Service

<http://www.nws.noaa.gov/nwr>

# NOAA WEATHER RADIO

The Voice of NOAA's National Weather Service

<http://www.nws.noaa.gov/nwr>

NOAA Weather Radio is a service of the National Oceanic and Atmospheric Administration (NOAA) of the U.S. Department of Commerce. As the "voice of the National Weather Service," it provides continuous broadcasts (24 hours a day) of the latest weather information from local National Weather Service offices. Weather messages are repeated every 4 to 6 minutes and are routinely updated every 1 to 6 hours or more frequently in rapidly changing local weather or if a nearby natural hazardous or manmade condition exists.



The regular broadcasts are specifically tailored to weather information needs of the people within the service area of the transmitter. For example, in addition to general weather information, stations in coastal areas provide information of interest to mariners. Other specialized information, such as hydrological forecasts and climatological data may be broadcast.

During severe weather, National Weather Service

forecasters can interrupt the routine weather broadcasts and insert special warning messages concerning imminent threats to life and property. The forecaster can also add special signals to warnings that trigger "alerting" features of specially equipped receivers. In the simplest case, this signal activates audible or visual alarms, indicating that an emergency condition exists within the broadcast areas of the station being monitored, and alerts the listener to turn up the volume and stay tuned for more information. More sophisticated receivers are automatically turned on and set to an audible volume when an alert is received.

In the most sophisticated alerting system, NOAA Weather Radio Specific Area Message Encoding (SAME), digital coding is employed to activate only those special receivers programmed for specific emergency conditions in specific area, typically a county. SAME can activate specially equipped radio and cable television receivers and provide a short text message that identifies the location and type of emergency. SAME is the primary activator for the FCC Emergency Alert System (EAS).

Under a January 1975 White House policy statement, NOAA Weather Radio was designated the sole Government-operated radio system to provide direct warning into private homes for both natural disasters and nuclear attack. This concept has been expanded to include warnings for all hazardous conditions that pose a threat to life and safety, both at a local and national level. As a result, NOAA Weather Radio is being better integrated with other National Weather Service systems to provide state and local emergency managers and other warning providers better access to local weather forecast offices, allowing hazard warnings of all types to be broadcast on NOAA Weather Radio within seconds

Columbia .....162.400	Corsicana .....162.525	Wendover.....162.475	Crandon .....162.450
Cross.....162.475	Crowley / Fort Worth .....162.550		Dubuque .....162.400
Florence .....162.550	Cumby.....162.500	VERMONT	Fond Du Lac .....162.500
Georgetown.....162.500	Dallas .....162.400	Burlington.....162.400	Green Bay.....162.550
Greenville.....162.550	Del Rio .....162.400	Castleton.....162.500	Janesville .....162.425
Jasper County .....162.400	D'Hanis.....162.525	Marlboro.....162.425	Ladysmith .....162.550
Kirksey .....162.425	Dilley .....162.500	St. Johnsbury .....162.425	Madison .....162.550
	El Paso.....162.475	Windsor.....162.475	Menomonie .....162.400
Orangeburg.....162.525	El Paso Spanish.....162.550		Milwaukee.....162.400
Rock Hill .....162.425	Galveston .....162.550	VIRGIN ISLANDS	New London.....162.525
Sumter.....162.425	Gilmer .....162.425	St. Croix .....162.500	Park Falls .....162.500
	Gonzales .....162.525		Prairie Du Chien.....162.500
SOUTH DAKOTA	Houston.....162.400	VIRGINIA	Racine.....162.450
Aberdeen.....162.475	Junction .....162.475	Covesville.....162.450	Rhineland.....162.400
Arlington.....162.525	Kerrville .....162.450	Heathsville .....162.400	Richland Center.....162.475
Faith .....162.475	La Grange .....162.500	Lynchburg .....162.550	Sheboygan .....162.525
Firesteel .....162.425	Laredo .....162.550	Manassas.....162.550	Sister Bay .....162.425
Hot Springs .....162.425	Llano .....162.425	Norfolk .....162.550	Spooner .....162.475
Lead .....162.525	Lubbock.....162.400	Richmond.....162.475	Wausau.....162.475
Lowry .....162.500	Lufkin .....162.550	Roanoke.....162.475	Wausaukee .....162.400
Mitchell.....162.450	Marietta .....162.525		Winona.....162.425
Philip .....162.450	Miami .....162.450	WASHINGTON	Withee.....162.425
Pickstown .....162.425	Midland/Odessa .....162.400	Astoria.....162.400	
Pierre.....162.400	Milano .....162.525	Cle Elum .....162.400	WYOMING
Porcupine.....162.500	Mineral Wells.....162.525	Davis Peak.....162.525	Afton .....162.425
Rapid City.....162.550	Muenster.....162.425	Dayton .....162.525	Casper .....162.400
Reliance.....162.525	Onalaska.....162.500	Forks .....162.425	Cheyenne .....162.550
Sioux Falls.....162.400	Ozona .....162.500	Goldendale.....162.525	Cody .....162.400
South Shore .....162.425	Palestine .....162.450	H Street - Blaine Area .....162.525	Dubois.....162.450
Wessington.....162.550	Paris.....162.550	Neah Bay .....162.550	Elk Plaza.....162.425
White River.....162.550	Pharr .....162.400	Okanogan .....162.525	Evanston.....162.450
	Plainview.....162.450	Olympia.....162.475	Gillette.....162.500
TENNESSEE	Port O'Connor .....162.475	Plymouth.....162.425	Glendo .....162.450
Bristol .....162.550	Richland Springs.....162.525	Puget Sound Marine .....162.425	Grant Village.....162.450
Centerville .....162.450	Rio Grande City.....162.425	Richland .....162.450	Jackson.....162.525
Chattanooga.....162.550	Riviera.....162.525	Seattle.....162.550	Kaycee.....162.550
Clarksville.....162.500	San Angelo.....162.550	Spokane.....162.400	Kemmerer.....162.525
Cookeville.....162.400	San Antonio.....162.550	The Dalles.....162.400	Lander.....162.475
Dyersburg.....162.500	Seguin.....162.475	Wenatchee.....162.475	Newcastle .....162.475
Hickman .....162.500	Seminole .....162.425	Yakima .....162.550	Pinedale.....162.500
Jackson.....162.550	Sherman.....162.475		Rawlins .....162.425
Knoxville.....162.475	Stephenville.....162.450	WEST VIRGINIA	Rock Springs.....162.550
La Follette .....162.450	Summerfield.....162.500	Backbone Mountain .....162.450	Sheridan .....162.475
Lafayette .....162.525	Sweetwater .....162.425	Beckley .....162.550	Thermopolis .....162.500
Lawrenceburg.....162.425	Texarkana .....162.550	Charleston.....162.400	Worland .....162.525
Lobelville .....162.525	Three Rivers.....162.450	Clarksburg.....162.550	
Memphis.....162.475	Throckmorton .....162.425	Garfield .....162.500	As of September 2008,
Nashville.....162.550	Tyler .....162.475	Gilbert .....162.475	NOAA is operating 1000
Shelbyville .....162.475	Uvalde .....162.425	Greggs Knob.....162.500	stations across the United
Spencer.....162.450	Victoria .....162.400	Hinton .....162.425	States and its territories.
Vale.....162.450	Waco .....162.475	Monterville.....162.525	
Waverly .....162.400	Wichita Falls.....162.475	Moorefield .....162.400	
Winchester .....162.525		Morgantown.....162.475	
	UTAH	Sutton .....162.450	
TEXAS	Bear Lake.....162.500		
Abilene .....162.400	Castle Dale.....162.500	WISCONSIN	
Amarillo .....162.550	Coalville / Park City .....162.475	Ashland.....162.525	
Austin .....162.400	Escalante .....162.425	Baraboo.....162.450	
Bay City .....162.425	Lake Powell .....162.550	Black River Falls .....162.500	
Beaumont.....162.475	Logan .....162.400	Coloma.....162.400	
Big Spring.....162.475	Manti .....162.425		
Borger .....162.400	Milford/Cedar City.....162.400		
Brownsville .....162.550	Moab .....162.475		
Bryan .....162.550	Monticello .....162.450		
Burkeville.....162.425	Salt Lake City .....162.550		
Carrizo Springs.....162.550	St. George.....162.475		
Center .....162.525	Tabiona .....162.550		
Cisco .....162.500	Tooele (South Mountain) 162.450		
Coleman.....162.475	Tooele (Vernon Hills).....162.525		
Corpus Christi.....162.550	Vernal.....162.400		

To better serve the community, the National Weather Service requests your assistance in reporting any outages of NOAA Weather Broadcast Stations.

Please use our Toll Free Number (888) 886-1227 or send an Email to [nwroutage@noaa.gov](mailto:nwroutage@noaa.gov) to report the outage.

La Plata.....	162.525
Lancaster.....	162.550
Maryville.....	162.425
Piedmont.....	162.425
Springfield.....	162.400
St. Louis.....	162.550
Summersville.....	162.475
Trenton.....	162.500
Wardell.....	162.525
West Plains.....	162.525

<b>MONTANA</b>	
Baker.....	162.550
Belgian Hill.....	162.500
Billings.....	162.550
Bozeman.....	162.500
Broadus.....	162.425
Browning.....	162.525
Butte.....	162.550
Circle.....	162.550
Dillon.....	162.475
Forsyth.....	162.525
Glasgow.....	162.400
Glendive.....	162.475
Great Falls.....	162.550
Hardin.....	162.450
Havre.....	162.400
Helena.....	162.400
Jordan.....	162.500
Kalispell.....	162.550
Lewistown.....	162.500
Livingston.....	162.525
Malta.....	162.475
Miles City.....	162.400
Missoula.....	162.400
Plentywood.....	162.475
Poplar.....	162.425
Ryegate.....	162.450
Scobey.....	162.450
Winnett.....	162.400

<b>NEBRASKA</b>	
Albion.....	162.500
Bassett.....	162.475
Beatrice.....	162.450
Cambridge.....	162.525
Chadron.....	162.525
Columbus.....	162.450
Grand Island.....	162.400
Holdrege.....	162.475
Lexington.....	162.450
Lincoln.....	162.475
Merna.....	162.500
Merriman.....	162.400
Norfolk.....	162.550
North Platte.....	162.550
Omaha.....	162.400
Ord.....	162.525
Oshkosh.....	162.525
Scottsbluff.....	162.475
Shubert.....	162.500
Sidney.....	162.500
Superior.....	162.525
Trenton.....	162.500
Valentine.....	162.450
Yankton.....	162.500

<b>NEVADA</b>	
Bullhead City.....	162.500

Elko.....	162.550
Ely.....	162.400
Eureka.....	162.550
Fernley.....	162.450
Hawthorne.....	162.475
Jackpot.....	162.500
Las Vegas.....	162.550
Owyhee.....	162.450
Pahrump.....	162.400
Reno.....	162.550
Winnemucca.....	162.400

<b>NEW HAMPSHIRE</b>	
Clarksville.....	162.400
Concord.....	162.400
Deerfield.....	162.450
Hanover.....	162.525
Holderness.....	162.550
Mt. Washington.....	162.500
Pack Monadnock.....	162.525
<b>NEW JERSEY</b>	
Atlantic City.....	162.400
Hardyston.....	162.500
Howell Township.....	162.450

<b>NEW MEXICO</b>	
Albuquerque.....	162.400
Artesia.....	162.425
Carlsbad.....	162.475
Clovis.....	162.475
Des Moines.....	162.550
Farmington.....	162.475
Hobbs.....	162.400
Las Cruces.....	162.400
Roswell.....	162.450
Ruidoso.....	162.550
Santa Fe.....	162.550

<b>NEW YORK</b>	
Albany.....	162.550
Binghamton.....	162.475
Buffalo.....	162.550
Call Hill.....	162.425
Cattaraugus.....	162.425
Cooperstown.....	162.450
Elmira.....	162.400
Frewsburg.....	162.525
Gore Mtn.....	162.450
Highland.....	162.475
Ithaca.....	162.500
Middleville.....	162.425
Mt. Washington.....	162.450
New York City.....	162.550
Norwich.....	162.525
Riverhead.....	162.475
Rochester.....	162.400
Stamford.....	162.400
Syracuse.....	162.550
Walton.....	162.425
Watertown.....	162.475

<b>NORTH CAROLINA</b>	
Asheville.....	162.400
Buck Mountain.....	162.500
Cape Hatteras.....	162.475
Chapel Hill.....	162.550
Charlotte.....	162.475
Ellerbe.....	162.400
Fayetteville.....	162.475

Garner.....	162.450
Henderson.....	162.500
Linville.....	162.450
Lumber Bridge.....	162.525
Mamie.....	162.425
Margaretsville.....	162.450
Mount Jefferson.....	162.500
New Bern.....	162.400
Robbinsville.....	162.525
Rocky Mount.....	162.475
Warsaw.....	162.425
Windsor.....	162.525
Winnabow.....	162.550
Winston-Salem.....	162.400

<b>NORTH DAKOTA</b>	
Bismarck.....	162.475
Cavalier.....	162.450
Dickinson.....	162.400
Fargo.....	162.475
Fort Ransom.....	162.525
Grand Forks.....	162.475
Jamestown.....	162.550
Langdon.....	162.525
Minot.....	162.400
New Town.....	162.525
Petersburg.....	162.400
Rolla.....	162.475
Sheyenne.....	162.525
Steele.....	162.400
Webster.....	162.425
Williston.....	162.550
Willow City.....	162.450

<b>NORTHERN MARIANA ISLANDS</b>	
Saipan.....	162.550

<b>OHIO</b>	
Akron.....	162.400
Athens.....	162.425
Bridgeport.....	162.525
Carey.....	162.525
Chillicothe.....	162.500
Cleveland.....	162.550
Columbus.....	162.550
Dayton.....	162.475
Grafton.....	162.500
High Hill.....	162.475
Lima.....	162.400
Mansfield.....	162.450
Marietta.....	162.400
New Philadelphia.....	162.425
Otway.....	162.525
Sandusky.....	162.400
Toledo.....	162.500
Youngstown.....	162.500

<b>OKLAHOMA</b>	
Altus.....	162.425
Antlers.....	162.400
Ardmore.....	162.525
Atoka.....	162.500
Bartlesville.....	162.425
Broken Bow.....	162.450
Clinton.....	162.525
Enid.....	162.475
Grove.....	162.500
Lawton.....	162.550
McAlester.....	162.475
Oklahoma City.....	162.400

Oktaha.....	162.525
Ponca City.....	162.450
Stillwater.....	162.500
Tulsa.....	162.550
Woodward.....	162.500

<b>OREGON</b>	
Bend/Redmond.....	162.500
Brookings.....	162.550
Burns Butte.....	162.475
Cape Blanco.....	162.425
Coos Bay.....	162.400
Eugene.....	162.400
Florence.....	162.500
Fossil.....	162.550
Heppner.....	162.425
Heppner2.....	162.425
John Day.....	162.500
Klamath Falls.....	162.550
Medford.....	162.400
Mt Hebo.....	162.525
Mt. Ashland.....	162.475
Neahkahnie.....	162.425
Newport.....	162.550
Pendleton.....	162.425
Portland.....	162.550
Roseburg.....	162.550
Salem.....	162.475
Spout Springs.....	162.400
Tillamook.....	162.475
Umatilla.....	162.500

<b>PENNSYLVANIA</b>	
Allentown.....	162.400
Altoona.....	162.425
Clearfield.....	162.550
Coudersport.....	162.500
Erie.....	162.400
Harrisburg.....	162.550
Hibernia Park.....	162.425
Honesdale.....	162.450
Huntingdon.....	162.525
Johnstown.....	162.400
Meadville.....	162.475
Parker.....	162.425
Philadelphia.....	162.475
Pittsburgh.....	162.550
Punxsutawney.....	162.500
State College.....	162.475
Towanda.....	162.525
Warren.....	162.450
Wellsboro.....	162.475
Wilkes-Barre.....	162.550
Williamsport.....	162.400

<b>PUERTO RICO</b>	
Culebra.....	162.450
Maricao.....	162.550
San Juan.....	162.400

<b>RHODE ISLAND</b>	
Providence.....	162.400

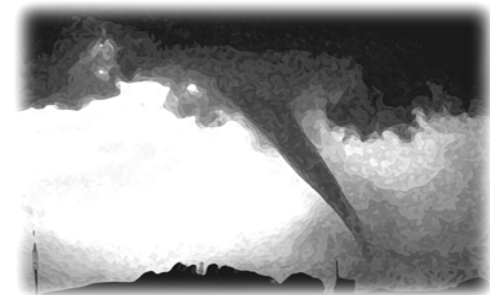
<b>SOUTH CAROLINA</b>	
Aiken.....	162.450
Aynor.....	162.400
Barnwell.....	162.500
Beaufort.....	162.450
Charleston.....	162.550
Cheraw.....	162.450

NOAA Weather Radio currently broadcasts from 1000 stations in fifty states, Puerto Rico, the U.S. Virgin Islands, American Samoa, Guam, and Saipan on seven frequencies in the VHF band, ranging from 162.400 to 162.550 megahertz (MHz). These frequencies are outside the normal AM or FM broadcast bands.

Special radios that receive only NOAA Weather Radio, both with and without special alerting features, are available from numerous manufacturers. In addition, other manufacturers are including NWR capability in a variety of receivers. NOAA Weather Radio capability is currently available on automobile, aircraft, marine, citizens band, and standard AM/FM radios as well as communications receivers, transceivers, scanners, and cable TV.

By nature and design, NOAA Weather Radio coverage is limited to an area within 40 miles of the transmitter. The quality of reception is dictated by transmitter distance, local terrain, and the quality and location of the receiver. In general, those using a high quality receiver on flat terrain or at sea can expect reliable reception beyond 40 miles. Those with standard receivers, surrounded by large buildings in cities and those in mountain valleys may experience little or no reception at considerably less than 40 miles. If possible, a receiver should be tested in the location where it will be used prior to purchase.

NOAA Weather Radio is directly available to a large portion of the U.S. population. The National Weather Service is currently engaged in a program to increase coverage to at least 95 percent of the population.



If you have a question regarding the technical aspects of NOAA Weather Radio such as transmitter location, reception, and characteristics or if you are interested in becoming a partner with the National Weather Service to identify or provide local funding and/or facilities for the installation of a NOAA Weather Radio transmitter, please contact your local National Weather Service Office or send a letter to:

National Weather Service  
Attn: Dissemination Systems Branch, W/OPS17  
1325 East-West Highway  
Silver Spring, MD 20910

If you have a question about the weather information broadcast over NOAA Weather Radio, please contact your local National Weather Service Office or send a letter to:

National Weather Service  
Attn: Office of Climate, Water and Weather Services, W/OPS51  
1325 East-West Highway  
Silver Spring, MD 20910

The following is a listing of operational stations by state. For specific coverage information for your local area please visit our website at:

<http://www.nws.noaa.gov/nwr>

#### ALABAMA

Anniston .....162.475  
 Arab.....162.525  
 Auburn.....162.525  
 Birmingham.....162.550  
 Brewton.....162.475  
 Columbus.....162.400  
 Cullman.....162.450  
 Demopolis.....162.475  
 Dozier.....162.550  
 Florence.....162.475  
 Greenville.....162.425  
 Henagar.....162.500  
 Huntsville.....162.400  
 Jackson.....162.500  
 Louisville.....162.475  
 Mobile.....162.550  
 Montgomery.....162.400  
 Oneonta.....162.425  
 Selma.....162.450  
 Tuscaloosa.....162.400  
 Winfield.....162.525

#### ALASKA

Althorp Peak.....162.425  
 Anchorage.....162.550  
 Barrow.....162.550  
 Bede Mountain.....162.450  
 Bethel.....162.550  
 Cape Fanshaw.....162.425  
 Cape Gull.....162.500  
 Cape Hinchinbrook.....162.525  
 Cordova.....162.400  
 Craig.....162.475  
 Dillingham.....162.500  
 Duke Island.....162.450  
 Dutch Harbor.....162.550  
 East Point.....162.500  
 Fairbanks.....162.550  
 Gravina Island.....162.525  
 Haines.....162.400  
 Homer.....162.400  
 Juneau.....162.550  
 Ketchikan.....162.550  
 Kodiak.....162.550  
 Kotzebue.....162.550  
 Manleyville.....162.500  
 Marmot Island.....162.500  
 Mt. McArthur.....162.525  
 Mt. Robert Barron.....162.450  
 Nenana.....162.400  
 Ninilchik.....162.550  
 Nome.....162.550  
 Pillar Mtn.....162.525  
 Point Pigot.....162.450  
 Potato Point.....162.425  
 Raspberry Island.....162.425  
 Rugged Island.....162.425  
 Saint Paul Island.....162.525  
 Sand Point.....162.550  
 Seward.....162.550

Sitka.....162.550  
 Sitkinak Dome.....162.450  
 Soldotna.....162.475  
 Sukkwan Island.....162.425  
 Tripod Mtn.....162.450  
 Tuklung Mtn.....162.425  
 Valdez.....162.550  
 Wasilla.....162.400  
 Whittier.....162.475  
 Wrangell.....162.400  
 Yakutat.....162.400  
 Zarembo Island.....162.450

#### AMERICAN SAMOA

Pago Pago.....162.400

#### ARIZONA

Flagstaff.....162.400  
 Globe Gila County S.....162.500  
 Grand Canyon.....162.475  
 Greer.....162.525  
 Kingman.....162.425  
 Lake Havasu.....162.400  
 Nogales.....162.500  
 Payson Gila County N.....162.425  
 Phoenix.....162.550  
 Prescott.....162.525  
 Safford.....162.550  
 Show Low.....162.400  
 Tucson.....162.400  
 Window Rock.....162.550

#### ARKANSAS

Cherokee Village.....162.475  
 El Dorado.....162.525  
 Fayetteville.....162.475  
 Fort Smith.....162.550  
 Fountain Hill.....162.475  
 Gurdon.....162.475  
 Harrison.....162.525  
 Jonesboro.....162.550  
 Little Rock.....162.550  
 Marvell.....162.525  
 Mena.....162.400  
 Morrilton.....162.475  
 Mount Ida.....162.425  
 Mountain View.....162.450  
 Russell.....162.400  
 Russellville.....162.525  
 Springdale.....162.400  
 Star City.....162.400  
 Yellville.....162.500

#### CALIFORNIA

Avalon.....162.525  
 Bakersfield.....162.550  
 Big Rock Ridge.....162.500  
 Coachella.....162.400  
 Coachella / Spanish.....162.525  
 Contra Costa County.....162.425  
 Conway Summit.....162.525  
 El Paso Mtns.....162.425  
 Eureka.....162.400  
 Fresno.....162.400  
 Grass Valley.....162.400  
 Los Angeles.....162.550  
 Monterey.....162.550  
 Monterey Marine.....162.450  
 Point Arena.....162.550  
 Redding.....162.550

Sacramento.....162.550  
 San Diego.....162.400  
 San Diego Marine.....162.425  
 San Francisco.....162.400  
 San Luis Obispo.....162.550  
 San Simeon.....162.525  
 Santa Ana.....162.450  
 Santa Barbara.....162.400  
 Santa Barbara Marine.....162.475  
 Ukiah.....162.525  
 Victorville.....162.500  
 Yosemite.....162.450  
 Yuma.....162.550

#### COLORADO

Alamosa.....162.425  
 Anton.....162.450  
 Bethune.....162.525  
 Boyero.....162.450  
 Canon City.....162.500  
 Colorado Springs.....162.475  
 Deer Trail.....162.500  
 Denver.....162.550  
 Durango.....162.425  
 Fort Collins/Ault.....162.450  
 Fort Morgan.....162.525  
 Fowler.....162.425  
 Franktown.....162.450  
 Glenwood Springs.....162.500  
 Grand Junction.....162.550  
 Greeley.....162.400  
 La Junta.....162.500  
 Lamar.....162.525  
 Mead/Longmont.....162.475  
 Montrose.....162.450  
 Pueblo.....162.400  
 Springfield.....162.400  
 Sterling.....162.400  
 Walsenburg.....162.450  
 Wray.....162.475

#### CONNECTICUT

Cornwall.....162.500  
 Hartford.....162.475  
 Meriden.....162.400  
 New London.....162.550

#### DELAWARE

Lewes.....162.550  
 Salisbury.....162.475

#### FLORIDA

Belle Glade.....162.400  
 Bethlehem.....162.450  
 Daytona Beach.....162.400  
 East Point.....162.500  
 Fort Myers.....162.475  
 Fort Pierce.....162.425  
 Gainesville.....162.475  
 Inverness.....162.400  
 Jacksonville.....162.550  
 Key West.....162.400  
 Lake City.....162.400  
 Largo.....162.450  
 Melbourne.....162.550  
 Miami.....162.550  
 Morriston.....162.550  
 Naples.....162.525  
 Ocala.....162.525  
 Orlando.....162.475

Palatka.....162.425  
 Panama City.....162.550  
 Pensacola.....162.400  
 Princeton.....162.425  
 Salem.....162.425  
 Sarasota.....162.400  
 Sebring.....162.500  
 Sneads.....162.425  
 Tallahassee.....162.400  
 Tampa Bay.....162.550  
 Tea Table Key.....162.450  
 West Palm Beach.....162.475

#### GEORGIA

Americus.....162.425  
 Ashburn.....162.450  
 Athens.....162.400  
 Atlanta.....162.550  
 Augusta.....162.550  
 Baxley.....162.525  
 Blakely.....162.525  
 Blue Ridge.....162.475  
 Brasstown Bald.....162.500  
 Brunswick.....162.425  
 Buchanan.....162.425  
 Chatsworth.....162.400  
 Clayton.....162.450  
 Cleveland.....162.525  
 Eastman.....162.400  
 Eatonton.....162.525  
 Jesup.....162.450  
 La Grange.....162.450  
 Macon.....162.475  
 Metter.....162.425  
 Pelham.....162.550  
 Sandersville.....162.450  
 Summerville.....162.450  
 Thomaston.....162.500  
 Toccoa.....162.425  
 Valdosta.....162.500  
 Waycross.....162.475  
 Waynesboro.....162.425

#### GUAM

Guam.....162.400

#### HAWAII

Hawaii Kai.....162.400  
 Kauai.....162.400  
 Kulani Cone.....162.550  
 Maui.....162.400  
 Oahu.....162.550  
 South Point.....162.550

#### IDAHO

Boise.....162.550  
 Bonners Ferry.....162.500  
 Burley.....162.475  
 Driggs.....162.450  
 Grangeville.....162.450  
 Lewiston.....162.550  
 McCall.....162.475  
 Payette.....162.400  
 Pocatello.....162.550  
 Sedgwick Peak.....162.425  
 Twin Falls.....162.400

#### ILLINOIS

Bloomington.....162.525  
 Champaign.....162.550

Chester.....162.450  
 Chicago.....162.550  
 Crescent City.....162.500  
 Crystal Lake.....162.500

DeKalb.....162.550  
 Dixon.....162.525  
 Freeport.....162.450  
 Galesburg.....162.400  
 Hillsboro.....162.425  
 Jacksonville.....162.525  
 Jerseyville.....162.450  
 Kankakee.....162.525  
 Lockport.....162.425  
 Macomb.....162.500  
 Marion.....162.425  
 McLeansboro.....162.400  
 Newton.....162.450  
 Odell.....162.450  
 Paris.....162.525  
 Peoria.....162.475  
 Plano.....162.400  
 Princeton.....162.425  
 Quad Cities.....162.550  
 Rockford.....162.475  
 Salem.....162.475  
 Shelbyville.....162.500  
 Springfield.....162.400

#### INDIANA

Angola.....162.425  
 Bloomington.....162.450  
 Edwardsport.....162.425  
 Evansville.....162.550  
 Fort Wayne.....162.550  
 Georgia.....162.500  
 Hebron.....162.450  
 Indianapolis.....162.550  
 Marion.....162.450  
 Michigan City.....162.500  
 Monticello/Lafayette.....162.475  
 New Albany.....162.475  
 Newport.....162.425  
 North Webster.....162.500  
 Putnamville.....162.400  
 Richmond.....162.500  
 Seymour.....162.525  
 South Bend.....162.400

#### IOWA

Burlington.....162.525  
 Carroll.....162.425  
 Cedar Rapids.....162.475  
 Decorah.....162.525  
 Denison.....162.550  
 Des Moines.....162.550  
 Essex.....162.550  
 Fairfield.....162.400  
 Forest City.....162.500  
 Fort Dodge.....162.400  
 Hancock/Pottawattam.....162.525  
 Iowa Falls.....162.525  
 Lake Rathbun.....162.425  
 Lenox.....162.450  
 Manchester.....162.450  
 Maquoketa.....162.425  
 Marshalltown.....162.500  
 Milford.....162.550  
 Montezuma.....162.450  
 Ottumwa.....162.500

Ringsted.....162.475  
 Sanborn.....162.525  
 Sioux City.....162.475  
 St. Ansgar.....162.450  
 Storm Lake.....162.450  
 Van Wert.....162.475  
 Waterloo.....162.550

#### KANSAS

Abilene.....162.525  
 Beaumont.....162.500  
 Belvidere.....162.525  
 Blue Rapids.....162.425  
 Chanute.....162.400  
 Concordia.....162.550  
 Dighton.....162.525  
 Dodge City.....162.475  
 Ellsworth.....162.400  
 Gem.....162.400  
 Halls Summit.....162.425  
 Hays.....162.450  
 Kirwin.....162.500  
 Lenora.....162.425  
 Meade.....162.425  
 Saint Joseph.....162.400  
 Topeka.....162.475  
 Tribune.....162.550  
 Ulysses.....162.450  
 Wichita.....162.550

#### KENTUCKY

Ashland.....162.550  
 Beattyville.....162.500  
 Bowling Green.....162.400  
 Burkesville.....162.475  
 Campbellsville.....162.525  
 Covington.....162.550  
 East Madison County.....162.525  
 Ekron.....162.450  
 Elizabethtown.....162.550  
 Frenchburg.....162.475  
 Harlan.....162.450  
 Hazard.....162.475  
 Hopkinsville.....162.450  
 Horse Cave.....162.500  
 Irvine.....162.475  
 Jackson.....162.425  
 Lexington.....162.400  
 London.....162.475  
 Madison County.....162.525  
 Madisonville.....162.525  
 Manchester.....162.400  
 Mayfield.....162.475  
 Maysville.....162.425  
 McKee.....162.450  
 Monticello.....162.425  
 Morehead.....162.425  
 Mount Vernon.....162.425  
 Owenton.....162.450  
 Paintsville.....162.525  
 Phelps.....162.500  
 Pikeville.....162.400  
 Pineville.....162.525  
 Somerset.....162.550  
 Stanton.....162.550  
 West Liberty.....162.450  
 West Madison County.....162.525  
 Whitesville.....162.475  
 Williamsburg.....162.500

#### LOUISIANA

Alexandria.....162.475  
 Baton Rouge.....162.400  
 Bogalusa.....162.525  
 Buras.....162.475  
 Lafayette.....162.550  
 Lake Charles.....162.400  
 Monroe.....162.550  
 Morgan City.....162.475  
 Natchitoches.....162.500  
 New Orleans.....162.550  
 Shreveport.....162.400

#### MAINE

Caribou.....162.525  
 Dresden.....162.475  
 Ellsworth.....162.400  
 Falmouth.....162.550  
 Frenchville.....162.475  
 Greenville.....162.425  
 Jonesboro (Marine).....162.450  
 Meddybemps.....162.425  
 Milo.....162.550  
 Springfield.....162.500  
 Sugarloaf Mtn.....162.450

#### MARYLAND

Baltimore.....162.400  
 Frostburg.....162.425  
 Hagerstown.....162.475  
 Sudlersville.....162.500

#### MASSACHUSETTS

Boston.....162.475  
 Bourne/Hyannis.....162.550  
 Egremont.....162.450  
 Gloucester ( Marine).....162.425  
 Mt. Greylock.....162.525  
 Worcester.....162.550

#### MICHIGAN

Adrian / Petersburg.....162.450  
 Alpena.....162.550  
 Detroit.....162.550  
 Escanaba.....162.500  
 Flint.....162.475  
 Gaylord.....162.500  
 Grand Rapids.....162.550  
 Hesperia.....162.475  
 Houghton.....162.400  
 Manistique.....162.525  
 Marquette.....162.550  
 Mount Pleasant.....162.525  
 Maysville.....162.450  
 Onondaga.....162.400  
 Oshtemo.....162.475  
 Sandusky.....162.450  
 Sault Ste Marie.....162.550  
 Traverse City.....162.400  
 Paintsville.....162.450  
 West Olive.....162.425  
 Wolf Lake.....162.425

#### MINNESOTA

Aitkin.....162.450  
 Appleton.....162.550  
 Bemidji.....162.425  
 Clearwater.....162.500  
 Coleraine.....162.400  
 Detroit Lakes.....162.400

Duluth.....162.550  
 Elephant Lake.....162.450  
 Ely.....162.500  
 Fergus Falls.....162.500  
 Finland.....162.425  
 Fulda.....162.425  
 Grand Marais.....162.450  
 Gun Flint Lake.....162.525  
 International Falls.....162.550  
 Jeffers.....162.450  
 Kensington.....162.400  
 LaCrescent.....162.550  
 Lake Bronson.....162.525  
 Leader.....162.550  
 Long Prairie.....162.525  
 Mankato.....162.400  
 Minneapolis/St. Paul.....162.550  
 New Ulm.....162.525  
 Norwood.....162.425  
 Olivia.....162.400  
 Park Rapids.....162.475  
 Pine City.....162.425  
 Rochester.....162.475  
 Roosevelt.....162.450  
 Russell.....162.500  
 St. Cloud.....162.400  
 Thief River Falls.....162.550  
 Virginia.....162.475  
 Waubun.....162.450  
 Willmar.....162.475

#### MISSISSIPPI

Ackerman.....162.475  
 Booneville.....162.400  
 Bude.....162.550  
 Carthage.....162.500  
 Gulfport.....162.400  
 Hattiesburg.....162.475  
 Inverness.....162.550  
 Jackson.....162.400  
 Kosciusko.....162.425  
 Leakesville.....162.425  
 Meridian.....162.550  
 Oxford.....162.550  
 Parchman.....162.500

#### MISSOURI

Alton.....162.500  
 Bellflower.....162.450  
 Bloomfield.....162.400  
 Bourbon.....162.525  
 Branson.....162.550  
 Camdenton.....162.550  
 Cameron.....162.475  
 Cape Girardeau.....162.550  
 Carrollton.....162.450  
 Cassville.....162.525  
 Clinton.....162.500  
 Columbia.....162.400  
 Dixon.....162.425  
 Doniphan.....162.450  
 El Dorado Springs.....162.475  
 Fredricktown.....162.500  
 Gainesville.....162.425  
 Hannibal.....162.475  
 Hermitage.....162.450  
 Jamestown.....162.425  
 Joplin.....162.425  
 Kahoka.....162.450  
 Kansas City.....162.550