

October 10, 2000

Ms. Kathleen Newcomer
Suffolk County Department of Health Services
Drinking Water Supply Section
220 Rabro Drive East
Hauppauge, New York 11788

Dear Ms. Newcomer:

SUBJECT: Monthly Water Treatment Plant Reports
Reference: Suffolk County Minimum Monitoring Requirements for September 2000

In accordance with the requirements of the BNL Potable Water System Sampling Plan and the 2000 SCDHS Minimum Monitoring Requirements for the BNL Potable Water Supply, included please find the following attachments for your records:

- Attachment I: BNL Potable Water Monthly Bacteriological and Operational Reports for September 2000.
- Attachment II: September 2000 Biweekly and Quarterly Water Quality Monitoring Data for BNL Distribution System and Potable Water Wells.
- Attachment III: Summary of 2000 Annual Lead and Copper Sampling Analytical Results.
- Attachment IV: 2000 Semi-Annual Inorganic and Nitrate/Nitrite Analyses for the BNL Potable Water Distribution System and Potable Wells.
- Attachment V: 2000 Third Quarter Principal Organic Compound Analyses for the BNL Potable Water Distribution System and Potable Water Wells.
- Attachment VI: 2000 Annual Synthetic Organic Chemical and Pesticides Analytical Results for the BNL Potable Water Distribution System and Potable Water Wells.
- Attachment VII: 2000 Annual Asbestos Analytical Results for the BNL Potable Water Distribution System.

All analytical results have been reviewed and have been found to be within New York State Department of Health Drinking Water Standards (NYSDOH DWS) except for one detection of

October 10, 2000

354 ppb of total iron at Building 185. The iron concentration detected exceeds the secondary MCL of 300 ppb, which is based on aesthetic qualities. It is our understanding that no further action is required at this time, and the detection of elevated iron should be discussed in our 2001 Consumer Confidence Report. Collection and analysis of these samples are performed in accordance with the guidelines of the BNL Quality Assurance program, the SCDHS Community Water Supply Monitoring Requirements, and the BNL Potable Water System Sampling Plan. Plant Engineering Division personnel using standard operating procedures collect routine monitoring samples; a contractor laboratory using standard methods of analysis performs the subsequent analyses. The Quality Assurance documentation is available from the Environmental Services Division and Plant Engineering Divisions. Based on this information, we believe the values contained in these reports are representative of the BNL potable water system.

Should there be any questions regarding this report or the analytical or operational data contained herein, please call either R. Lee at (631) 344-3148, M. Allocco at (631) 344-3166, or W. Chaloupka at (631) 344-7136.



Sincerely,

E. A. Zimmerman, CEP, REM, CEA, CESM
Division Manager

EAZ/MA:rt

Attachments: As noted

cc: K. Brog w/o attachments
W. Chaloupka w/attachments
R. Lee w/attachments
E. Murphy w/attachments
P. Ponturo, SCDHS, w/o attachments
L. Ross w/o attachments
R. Simeone w/attachments

EC61ER.00

ATTACHMENT I

**Brookhaven National Laboratory
Potable Water Supply**

**Monthly Bacteriological and Operational
Reports for September 2000**

BROOKHAVEN NATIONAL LABORATORY

WATER SYSTEMS OPERATION REPORT

Public Water Supply Protection

PROGRAM CODE 169 STATION 11515100 SUFFOLK COUNTY REPORTING PERIOD : 2000

LOCATION: WATER TREATMENT PLANT

Source: Ground Water

Did an emergency occur in any part of the water system? yes _____ no
 Does the system have a chlorination waiver? yes _____ no

Month	CHLORINATION				pH		Totalizer
	Treated Water	Liquid Sodium Hypochlorite		Free Cl ₂ Residual	___ Lime	Daiiy Totalizer	
		Gallons	Cl ₂ use per 24hrs		___ Sodium Hydroxide		
1	1,535	20+160	10	0.53	7.7	11993322	
2	1,370	169	11	0.52	7.8	11994857	
3	0					11996227	
4	0						
5	2,296	155	19	0.72	7.5	11998523	
6	1,203	149	6	0.3	7.5	11999726	
7	1,529	139	10	0.67	7.7	12001255	
8	1,526	130	9	0.33	7.8	12002781	
9	0						
10	0						
11	4,533	100	30	0.45	7.7	12007314	
12	1,526	85	15	0.76	7.6	12008840	
13	1,538	70	15	1	7.8	12010378	
14	1,543	55	15	1	7.7	12011921	
15	1,534	45+72	10	0.6	7.7	12013455	
16	0						
17	0						
18	4,554	72	45	0.7	7.8	12016009	
19	1,520	60	12	0.7	7.9	12019529	
20	1,471	55	5	0.6	7.9	12021000	
21	1,465	50	5	0.7	7.9	12022465	
22	1,407	45+75	5	0.7	7.9	12023872	
23	0						
24	3,477	93	27	0.29	7.3	12027349	
25	1,072	150/85+105	8	0.38	7.49	12028421	
26	979	150/185	5	0.72	7.3	12029400	
27	1,128	150/180	5	0.57	7.41	12030528	
28	1,031	150/172	8	0.67	7.46	12031559	
29	0						
30	0						
31	0						
TOT	38,237		275				
AVG	1274.57		9.17	No Days:	30		

Population Served 3,500

Number of routine samples 4

(Must collect a minimum of 5 routine samples the month following a repeat sample collection)

Number of actual routine samples 7

Does a M&AR violation exist? yes _____ No

If yes, check reason's below.

___ Actual number of samples fewer than required

___ Failure to analyze for E. Coli if there was a positive result for total coliform from routine, repeat of high turbidity sample

___ Failure to analyze repeat samples

Does an MCL violation exist? NO

If yes, check reason(s) below.

___ Two or more positive total coliform samples for systems collecting 40 or more samples (routine, repeat or hiturb) per month.

___ Positive E. Coli result followed by a positive total coliform repeat sample

___ Positive total coliform result followed by a positive E. Coli repeat sample.

Reported by J.R. Ross

Date 10-2-00

Title WATER SYSTEMS SUPERVISOR

Cert. # 05650

BROOKHAVEN NATIONAL LABORATORY

WATER SYSTEMS OPERATION REPORT

Public Water Supply Protection

PROGRAM CODE 169 STATION 11515100 SUFFOLK COUNTY REPORTING PERIOD : 2000

LOCATION: WELL NO. 4

Did an emergency occur in any part of the water system? yes ___ no
 Does the system have a chlorination waiver? yes ___ no

Source: Ground Water

No.	CHLORINATION				pH		Totalizer
	Treated Water	Liquid Sodium Hypochlorite		Free Cl ₂ Residual	Lime	Daily Totalizer	
		Gallons	Cl ₂ use per 24hrs		Sodium Hydroxide		
1	600	178	16	0.05	6.2	1411947	
2	758	155	7	0.06	6.1	1412547	
3	0					1413305	
4	0						
5	1,089	135	20	NR	NR	1414394	
6	346	125	10	0.03	6	1414740	
7	610	114	11	0.18	6.1	1415350	
8	577	105	9	0.04	6.1	1415927	
9	0						
10	0						
11	1,424	75	30	0.12	6.1	1417351	
12	563	63	12	0.08	6.1	1417914	
13	509	53	10	0.18	5.9	1418423	
14	543	40+160	13	0.09	6.1	1418966	
15	509	188	12	0.01	6	1419475	
16	0						
17	0						
18	1,480	150	38	0.1	6.3	1420955	
19	490	140	10	0.1	6.3	1421445	
20	731	128	12	0.1	6.3	1422176	
21	526	119	9	0.1	6.3	1422702	
22	500	108	11	0.1	6.3	1423202	
23	0						
24	0						
25	1,049	82	16	0.06	5.9	1424251	
26	462	74	8	0.03	5.8	1424713	
27	363	65	9	0.01	5.9	1425076	
28	423	58+142	7	0.04	5.9	1425499	
29	384	190	10	0.02	6	1425883	
30	0						
31	0						
TOT	13,936		280				
1/G	464.53		9.33	No. Days	30		

Population Served 3,500

Number of routine samples 4

(Must collect a minimum of 5 routine samples the month following a repeat sample collection)

Number of actual routine samples 7

Does a M&AR violation exist? yes ___ No

If yes, check reason's below

___ Actual number of samples fewer than required.

___ Failure to analyze for E. Coli if there was a positive result for total coliform from routine, repeat of high turbidity sample.

___ Failure to analyze repeat samples.

Does an MCL violation exist? NO

If yes, check reason(s) below.

___ Two or more positive total coliform samples for systems collecting 40 or more samples (routine, repeat or hiturb) per month.

___ Positive E. Coli result followed by a positive total coliform repeat sample

___ Positive total coliform result followed by a positive E. Coli repeat sample.

Reported by TC Row

Date 10-2-00

Title WATER SYSTEMS SUPERVISOR

Cert. # 05650

BROOKHAVEN NATIONAL LABORATORY

WATER SYSTEMS OPERATION REPORT

Public Water Supply Protection

PROGRAM CODE 169 STATION 11515100 SUFFOLK COUNTY REPORTING PERIOD : 2000

LOCATION: WELL NO. 6

Source: Ground Water

Did an emergency occur in any part of the water system? yes ___ no ✓
 Does the system have a chlorination waiver? yes ___ no ✓

Month	CHLORINATION				pH		Totalizer
	Treated Water	Liquid Sodium Hypochlorite		Free Cl ₂ Residual	Lime		
		Gallons	Cl ₂ use per 24hrs		Sodium Hydroxide	Daily Totalizer	
	K Gals	112	per 24hrs	mg/l			61004
	101	111	1	0.05	6.2		61105
	202	110	1	0.06	6.1		61307
	0						
	0						
	0	110	0	NR	NR		61307
	778	105	5	0.03	6		62085
	0	105	0	0.18	6.1		62085
	165	102	3	0.04	6.1		62250
	0						
	0						
1	799	93	9	0.12	6.1		63049
2	219	90	3	0.08	6.1		63268
3	0	90	0	0.18	5.9		63268
4	94	90	0	NR	NR		63362
5	345	85	5	0.01	6		63707
6	0						
7	0						
8	0	80	5	0.1	6.1		63707
9	336	79	1	0.1	6.1		64043
0	112	78	1	0.1	6.2		64155
1	78	77	1	0.1	6.3		64233
2	81	75	2	0.1	6.3		64314
3	0						
4	0						
5	489	70	5	0.06	5.9		64803
6	96	70	0	0.03	5.8		64899
7	226	68	2	0.01	5.9		65125
8	146	65+135	3	0.04	5.9		65271
9	155	196	4	0.02	6		65426
0	0						
1	0						
T	4,422		51				0
G	147.40		1.70	No Days:	30		

Population Served 3,500

Number of routine samples 4

(Must collect a minimum of 5 routine samples the month following a repeat sample collection)

Number of actual routine samples 7

Does a M&AR violation exist? yes ___ No ✓

If yes, check reason's below.

- Actual number of samples fewer than required.
- Failure to analyze for E. Coli if there was a positive result for total coliform from routine, repeat of high turbidity sample.
- Failure to analyze repeat samples.

Does an MCL violation exist? NO

If yes, check reason(s) below.

- Two or more positive total coliform samples for systems collecting 40 or more samples (routine, repeat or hiturb) per month.
- Positive E. Coli result followed by a positive total coliform repeat sample.
- Positive total coliform result followed by a positive E. Coli repeat sample.

Reported by: J.C. Reed

Date: 10-2-00

Title: WATER SYSTEMS SUPERVISOR

Cert. #: 05650

BROOKHAVEN NATIONAL LABORATORY

WATER SYSTEMS OPERATION REPORT

Public Water Supply Protection

PROGRAM CODE 169	STATION 11515100	SUFFOLK COUNTY	REPORTING PERIOD :	2000
------------------	------------------	----------------	--------------------	------

LOCATION: WELL NO. 7

Did an emergency occur in any part of the water system? yes no

Source: Ground Water

Does the system have a chlorination waiver? yes no

Month	CHLORINATION				pH		Totalizer Daily Totalizer
	Treated Water K Gals	Liquid Sodium Hypochlorite		Free Cl ₂ Residual mg/l	Lime Sodium Hydroxide		
		Gallons	Cl ₂ use per 24hrs				
1	1,300	120+75	15	0.05	6.2	235435	
2	1,375	187	8	0.06	6.1	236735	
3	0					238110	
4	0						
5	1,661	172	5	NR	NR	239771	
6	1,334	163	9	0.06	6	241105	
7	1,597	150	13	0.18	6.1	242702	
8	1,143	140	10	0.04	6.1	243845	
9	0						
10	0						
11	3,242	110	30	0.12	6.1	247087	
12	1,298	98	12	0.08	6.1	248385	
13	1,369	85	13	0.18	5.9	249754	
14	1,310	73	12	0.09	6.1	251064	
15	1,129	60+140	13	0.01	6.0	252193	
16	0						
17	0						
18	3,466	170	30	0.1	6.2	255659	
19	1,364	167	3	0.1	6.2	257023	
20	1,739	152	15	0.1	6.3	258762	
21	1,318	143	9	0.1	6.3	260080	
22	1,275	132	11	0.1	6.3	261355	
23	0						
24	0						
25	3,121	110	22	0.06	5.9	264476	
26	727	102	8	0.03	5.8	265203	
27	753	95	7	0.01	5.9	265956	
28	1,007	85+45	10	0.04	5.9	266963	
29	884	120	10	0.02	6	267847	
30	0						
31	0						
TOT	32,412		265			0	
AVG.	1080.40		8.83	No Days	30		

Population Served 3,500

Number of routine samples 4

(Must collect a minimum of 5 routine samples the month following a repeat sample collection)

Number of actual routine samples 7

Does a M&AR violation exist? yes No

If yes, check reason's below.

Actual number of samples fewer than required.

Failure to analyze for E. Coli if there was a positive result for total coliform from routine, repeat of high turbidity sample.

Failure to analyze repeat samples.

Does an MCL violation exist? NO

If yes, check reason(s) below.

Two or more positive total coliform samples for systems collecting 40 or more samples (routine, repeat or hiturb) per month.

Positive E. Coli result followed by a positive total coliform repeat sample

Positive total coliform result followed by a positive E. Coli repeat sample

Reported by JCO Bass

Date 10-2-00

Title WATER SYSTEMS SUPERVISOR

Cert. # 05650

BROOKHAVEN NATIONAL LABORATORY

WATER SYSTEMS OPERATION REPORT

Public Water Supply Protection

PROGRAM CODE 169 STATION 11515100 SUFFOLK COUNTY REPORTING PERIOD : 2000

LOCATION: WELL NO. 10

Source: Ground Water

Did an emergency occur in any part of the water system? yes no

Does the system have a chlorination waiver? yes no

Month	CHLORINATION				pH		Totalizer Daily Totalizer 763856
	Treated Water K Gals	Liquid Sodium Hypochlorite		Free Cl2 Residual mg/l	Lime Sodium Hydroxide	Totalizer	
		Gallons	Cl2 use per 24hrs				
1	0	60	0	NR	NR	763856	
2	0	60	0	NR	NR	763856	
3	0						
4	0						
5	4	60	0	NR	NR	763860	
6	0	60	0	NR	NR	763860	
7	0	60	0	NR	NR	763860	
8	0	60	0	NR	NR	763860	
9	0						
10	0						
11	0	60	0	NR	NR	763860	
12	0	60	0	NR	NR	763860	
13	0	60	0	NR	NR	763860	
14	0	60	0	NR	NR	763860	
15	0	60	0	NR	NR	763860	
16	0						
17	0						
18	0	60	0	NR	NR	763860	
19	0	60	0	NR	NR	763860	
20	0	60	0	NR	NR	763860	
21	0	60	0	NR	NR	763860	
22	2	60	0	NR	NR	763862	
23	0						
24	0						
25	0	60	0	NR	NR	763862	
26	0	60	0	0.3	7.8	763862	
27	7	60	0	NR	NR	763869	
28	0	60	0	NR	NR	763869	
29	0	60	0	NR	NR	763869	
30	0						
31	0						
OT	13		0			0	
VG	0.43		0.00	No Days	30		

Population Served 3,500

Number of routine samples 4

(Must collect a minimum of 5 routine samples the month following a repeat sample collection)

Number of actual routine samples 7

Does a M&AR violation exist? yes No

If yes, check reason's below.

Actual number of samples fewer than required.

Failure to analyze for E. Coli if there was a positive result for total coliform from routine, repeat of high turbidity sample.

Failure to analyze repeat samples

Does an MCL violation exist? NO

If yes, check reason(s) below.

Two or more positive total coliform samples for systems collecting 40 or more samples (routine, repeat or hiturb) per month.

Positive E. Coli result followed by a positive total coliform repeat sample.

Positive total coliform result followed by a positive E. Coli repeat sample.

Reported by: JR Hosi

Date: 10-2-00

Title: WATER SYSTEMS SUPERVISOR

Cert. # 05650

BROOKHAVEN NATIONAL LABORATORY

WATER SYSTEMS OPERATION REPORT

Public Water Supply Protection

PROGRAM CODE 169 STATION 11515100 SUFFOLK COUNTY REPORTING PERIOD : 2000

LOCATION: WELL NO. 11

Did an emergency occur in any part of the water system? yes _____ no

Source: Ground Water

Does the system have a chlorination waiver? yes _____ no

Month	CHLORINATION				pH		Totalizer Daily Totalizer
	Treated Water	Liquid Sodium Hypochlorite		Free Cl2 Residual	Lime		
		Gallons	Cl2 use per 24hrs		Sodium Hydroxide		
	K Gals	168		mg/l			324190
1	21	168	0	1	7		324211
2	26	168	0	NR	NR		324237
3	0						
4	0						
5	1,453	151	17	0.8	8.1		325690
6	19	151	0	NR	NR		325709
7	0	151	0	NR	NR		325709
8	0	151	0	NR	NR		325709
9	0						
10	0						
11	125	150	1	8	0.7		325834
12	0	150	0	NR	NR		325834
13	0	150	0	0.5	8		325834
14	0	150	0	NR	NR		325834
15	0	150	0	NR	NR		325834
16	0						
17	0						
18	0	150	0	NR	NR		325834
19	0	150	0	NR	NR		325834
20	3	150	0	NR	NR		325837
21	0	150	0	NR	NR		325837
22	3	150	0	0.55	7.8		325840
23	0						
24	0						
25	5	150	0	0.7	8		325845
26	0	150	0	0.5	7.9		325845
27	3	150	0	0.3	8		325848
28	0	150	0	NR	NR		325848
29	0	150	0	NR	NR		325848
30	0						
31	0						
TOT	1,658		18				
AVG	55.27		0.60	No. Days	30		

Population Served 3,500

Number of routine samples 4

(Must collect a minimum of 5 routine samples the month following a repeat sample collection)

Number of actual routine samples 7

Does a M&AR violation exist? yes _____ No

If yes, check reason's below.

_____ Actual number of samples fewer than required.

_____ Failure to analyze for E. Coli if there was a positive result for total coliform from routine, repeat of high turbidity sample.

_____ Failure to analyze repeat samples.

Does an MCL violation exist? NO

If yes, check reason(s) below.

_____ Two or more positive total coliform samples for systems collecting 40 or more samples (routine, repeat or hiturb) per month.

_____ Positive E. Coli result followed by a positive total coliform repeat sample.

_____ Positive total coliform result followed by a positive E. Coli repeat sample.

Reported by SC Lopez

Date 10-2-00

Title WATER SYSTEMS SUPERVISOR

Gen # 05650

BROOKHAVEN NATIONAL LABORATORY

WATER SYSTEMS OPERATION REPORT

Public Water Supply Protection

PROGRAM CODE 169 STATION 11515100 SUFFOLK COUNTY REPORTING PERIOD : 2000

LOCATION: WELL NO. 12

Source: Ground Water:

Did an emergency occur in any part of the water system? yes _____ no
 Does the system have a chlorination waiver? yes _____ no

Date	CHLORINATION				pH		Totalizer
	Treated Water	Liquid Sodium Hypochlorite		Free Cl ₂	Lime	Sodium Hydroxide	
		Gallons	Cl ₂ use per 24hrs	Residual mg/l			
	K Gals	148					254949
	501	142	6	0.7	7		255450
	818	137	5	0.9	7.2		256268
	0						
	0						
	4 180	105	32	0.8	8		260448
	759	100	5	0.7	8		261207
	683	89	11	0.7	8		261890
	857	84	6	0.75	8		262747
	0						
	0						
	2,569	70	14	0.7	8		265316
	1,320	60	10	0.7	8		266636
	1,512	50	10	0.6	8		268148
	1,346	40+160	10	0.7	8		269494
	1,390	194	6	0.7	8		270884
	0						
	0						
	1 669	188	6	1.1	7.6		272553
	1,193	182	6	0.9	7.6		273746
	44	180	2	0.6	7.6		273790
	42	180	0	1	7.7		273832
	184	180	0	0.9	7.7		274016
	0						
	0						
	6	180	0	0.3	8		274022
	0	180	0	0.7	8		274022
	5	180	0	0.3	8		274027
	0	180	0	0.5	8		274027
	0	180	0	0.2	8		274027
	0						
	0						
T	19 078		129				
G	635 93		4 30	No Days	30		

Population Served 3,500

Number of routine samples 4

(Must collect a minimum of 5 routine samples the month following a repeat sample collection)

Number of actual routine samples 7

Does a M&AR violation exist? yes _____ No

If yes, check reason's below.

_____ Actual number of samples fewer than required.

_____ Failure to analyze for E. Coli if there was a positive result for total coliform from routine, repeat of high turbidity sample.

_____ Failure to analyze repeat samples

Does an MCL violation exist? NO

If yes, check reason(s) below.

_____ Two or more positive total coliform samples for systems collecting 40 or more samples (routine, repeat or hiturb) per month.

_____ Positive E. Coli result followed by a positive total coliform repeat sample.

_____ Positive total coliform result followed by a positive E. Coli repeat sample

Reported by JO HORN

Date 10-2-00

Title WATER SYSTEMS SUPERVISOR

Cert. # 05650

9/29/00
Pump Data

MONTHLY GALLONAGE REPORT
Sep2000

Date	Well 4	Well 6	Well 7	Well10	Well11	Well12	Daily Total
1	600	101	1,300	0	21	501	2,523
2	758	202	1,375	0	26	818	3,179
3	0	0	0	0	0	0	0
4	0	0	0	0	0	0	0
5	1,089	0	1,661	4	1,453	4,180	8,387
6	346	778	1,334	0	19	759	3,236
7	610	0	1,597	0	0	683	2,890
8	577	165	1,143	0	0	857	2,742
9	0	0	0	0	0	0	0
10	0	0	0	0	0	0	0
11	1,424	799	3,242	0	125	2,569	8,159
12	563	219	1,298	0	0	1,320	3,400
13	509	0	1,369	0	0	1,512	3,390
14	543	94	1,310	0	0	1,346	3,293
15	509	345	1,129	0	0	1,390	3,373
16	0	0	0	0	0	0	0
17	0	0	0	0	0	0	0
18	1,480	0	3,466	0	0	1,669	6,615
19	490	336	1,364	0	0	1,193	3,383
20	731	112	1,739	0	3	44	2,629
21	526	78	1,318	0	0	42	1,964
22	500	81	1,275	2	3	184	2,045
23	0	0	0	0	0	0	0
24	0	0	0	0	0	0	0
25	1,049	489	3,121	0	5	6	4,670
26	462	96	727	0	0	0	1,285
27	363	226	753	7	3	5	1,357
28	423	146	1,007	0	0	0	1,576
29	384	155	884	0	0	0	1,423
30	0	0	0	0	0	0	0
31	0	0	0	0	0	0	0
Total	13,936	4,422	32,412	13	1,658	19,078	71,519
		Totalizer		Totalizer		Total(x1,000)	
		This Month		Last Month		Gallons	
	Well 4	1,425,883		1,411,947		13,936	
	Well 6	65,426		61,004		4,422	
	Well 7	267,847		235,435		32,412	
	Well 10	763,869		763,856		13	
	Well 11	325,848		324,190		1,658	
	Well 12	274,027		254,949		19,078	
AGS Water Supply Meter		178,431		157,354		21077.00	
Medical Reactor - Well 105		83,449,870		80,005,470		3444.40	
Biology Building - Well 9		5,714,610		5,704,260		10.35	



5 Broad Hollow Road, Melville, NY 11747-5076
31694-3040 FAX: (631) 420-8436 NYS DOH ID# 10478

LABORATORY RESULTS

ROOKHAVEN NATIONAL LAB-BNLM

20 BELL AVE.
ROCKY HILL, CT 06153

Federal ID : 5111891

Received : 07-SEP-2000 14:00
Collected By : PP99
Sample Type : Potable Water

Copies To : SCHD
Report Issued : 09/13/2000

Lab Number	Collected	Location	Units	Method	Limits	T.COUL. BACT.	E.COUL.	CHLORINE RESIDUAL
0000907-213	07-SEP-2000 06:50	B-49 WATER TOWER	NONE	SM#9223	NEGATIVE	NEGATIVE	ABSENT	0.6
0000907-214	07-SEP-2000 07:05	B-640 WATER TOWER	NONE	SM#9223	NEGATIVE	ABSENT	ABSENT	1.0
0000907-215	07-SEP-2000 07:15	B-1005 RHIC	NONE	SM#9223	NEGATIVE	ABSENT	ABSENT	0.5
0000907-216	07-SEP-2000 07:40	B-363 APT. LAUNDRY	NONE	SM#9223	NEGATIVE	ABSENT	ABSENT	0.6
0000907-217	07-SEP-2000 07:25	B-930 LINAC	NONE	SM#9223	NEGATIVE	ABSENT	ABSENT	0.6
0000907-218	07-SEP-2000 08:05	B-490 OUTPATIENT CLINIC	NONE	SM#9223	NEGATIVE	ABSENT	ABSENT	0.4
0000907-219	07-SEP-2000 08:15	B-490 BLOCK 11	NONE	SM#9223	NEGATIVE	ABSENT	ABSENT	0.4

Joann M. Alvarin
Laboratory Director



575 Broad Hollow Road, Melville, NY 11747-5076
 (631)694-3040 . FAX:(631)420-8436 NYSDOH ID# 10478

LABORATORY RESULTS

BROOKHAVEN NATIONAL LAB.-BNLM
 70 BELL AVE.
 UPTON, NY 11973
 Federal ID : 5111891

Received : 07-SEP-2000 14:00
 Collected By : PP99
 Sample Type : Potable Water

Copies To: SCHD
 Report Issued: 09/13/2000

Lab Number	Collected	Location	Units Method Limits	T. COLI. BACT.	E. COLI.	CHLORINE RESIDUAL
20000907-220	07-SEP-2000 07:05	DUPLICATE (B640)	NONE SM#9223 NEGATIVE	NONE SM#9223 ABSENT	mg/L SM#4500-C1G N/A	1.0 07-SEP-2000
ROUTINE DISTRIBUTION			NEGATIVE 07-SEP-2000 17.45	ABSENT 07-SEP-2000 17.45		

Result(s) reported meet(s) NEW YORK STATE/USEPA limits for Potable Water.

ATTACHMENT II

**Brookhaven National Laboratory
Potable Water Supply**

**September 2000 Biweekly and Quarterly Water Quality Monitoring Data for
the BNL Distribution System and Potable Water Wells**

Attachment II
Table 1
Summary of Water Quality Analyses
for the BNL Potable Water System
September 2000

Sample Location	Sample Date	pH (SU)	Temperature (Degrees F)	Conductivity (µmhos)	Alkalinity (mg/L)	Calcium (mg/L)
WTP	9/5/00	7.5	63	159	NR	NR
WTP	9/7/00	7.7	54	134	NR	NR
WTP	9/12/00	7.6	56	126	NR	NR
WTP	9/14/00	7.7	56	134	NR	NR
WTP	9/19/00	7.9	56	140	NR	NR
WTP	9/21/00	7.9	56	170	NR	NR
WTP	9/25/00	7.5	56	126	NR	NR
WTP	9/28/00	7.4	55	133	NR	NR
Well 11	9/5/00	8.1	56	197	NR	NR
Well 11	9/7/00	8.0	56	200	NR	NR
Well 11	9/12/00	8.0	56	200	NR	NR
Well 11	9/14/00	8.0	56	206	NR	NR
Well 11	9/19/00	7.8	56	205	NR	NR
Well 11	9/25/00	7.9	57	200	NR	NR
Well 12	9/5/00	8.0	56	165	NR	NR
Well 12	9/7/00	8.0	56	169	NR	NR
Well 12	9/12/00	8.0	56	170	NR	NR
Well 12	9/14/00	8.0	56	175	NR	NR
Well 12	9/19/00	7.6	56	170	NR	NR
Well 12	9/21/00	7.7	56	157	NR	NR
Well 12	9/225/00	8.0	55	178	NR	NR
Well 12	9/28/00	8.0	56	197	NR	NR
Bldg. 363	7/6/00	7.7	72	135	21.6	8.95
Bldg. 640	7/6/00	7.3	68	153	30.8	8.41
Bldg. 49	7/6/00	7.3	64	128	27.0	10.50

NR - Analysis Not Required or Not Reported

WTP - Water Treatment Plant

Note: Field parameters are only conducted for facilities that are in operation on the day of measurement.



575 Broad Hollow Road, Melville, NY 11747-5076
631)694-3040 . FAX:(631)420-8436 NYSDOH ID# 10478

BROOKHAVEN NATIONAL LAB.-BNLM
70 BELL AVE.

Lab No. : 20000706-188

Sample Information...

Type : Potable Water
ROUTINE
Origin: DISTRIBUTION

UPTON, NY 11973
Attn To : S. SCARPITTA/TONY ROSS

Remarks: PH, CONDUCTIVITY & TEMPERATURE
ANALYZED BY CLIENT.

Federal ID : 5111891
Collected : 06-JUL-2000 09:15
Received : 06-JUL-2000 15:30
Collected By : RL99
Project No : 4469
Copies To : SCHO

Location: B-363 APARTMENT LAUNDRY

<u>Parameter(s)</u>	<u>Results</u>	<u>Units</u>	<u>Method Number</u>	<u>Analyzed</u>
CONDUCTIVITY	135	umhos/cm	EPA#120.1	06-JUL-2000
FIELD TEMPERATURE	72.1	OF	EPA#170.1	06-JUL-2000
PH	7.7	units	EPA#150.1	06-JUL-2000
TOTAL ALKALINITY	21.6	mg/L	SM#2320B	07-JUL-2000

S 0086

INORGANIC ANALYSIS DATA SHEET

EPA SAMPLE NO.

B-363_APT. LAUN

Lab Name: H2M_LABS, INC.

Contract: _____

Lab Code: H2MLAB

Case No.: _____

SAS No.: _____

SDG No.: BNLM097

Matrix (soil/water): WATER

Lab Sample ID: 20000706-188

Level (low/med): LOW

Date Received: 07/06/00

Solids: _____

Concentration Units (ug/L or mg/kg dry weight):

UG/L

CAS No.	Analyte	Concentration	C	Q	M
7429-90-5	Aluminum				NR
7440-36-0	Antimony				NR
7440-38-2	Arsenic				NR
7440-39-3	Barium				NR
7440-41-7	Beryllium				NR
7440-43-9	Cadmium				NR
7440-70-2	Calcium	8950			P
7440-47-3	Chromium				NR
7440-48-4	Cobalt				NR
7440-50-8	Copper				NR
7439-89-6	Iron				NR
7439-92-1	Lead				NR
7439-95-4	Magnesium				NR
7439-96-5	Manganese				NR
7439-97-6	Mercury				NR
7440-02-0	Nickel				NR
7440-09-7	Potassium				NR
7782-49-2	Selenium				NR
7440-22-4	Silver				NR
7440-23-5	Sodium				NR
7440-28-0	Thallium				NR
7440-62-2	Vanadium				NR
7440-66-6	Zinc				NR
	Cyanide				NR

Color Before: _____

Clarity Before: _____

Texture: _____

Color After: _____

Clarity After: _____

Artifacts: _____

Comments:

B-363_APT. LAUNDRY
 DATE REPORTED: AUGUST 12, 2000

S 0085



75 Broad Hollow Road, Melville, NY 11747-5076
331)694-3040 . FAX:(631)420-8436 NYSDOH ID# 10478

BROOKHAVEN NATIONAL LAB.-BNLM
70 BELL AVE.
UPTON, NY 11973

Lab No. : 20000706-187

Sample Information...
Type : Potable Water
ROUTINE
Origin: DISTRIBUTION

Remarks: PH, CONDUCTIVITY & TEMPERATURE
ANALYZED BY CLIENT.

Attn To : S. SCARPITTA/TONY ROSS
Federal ID : 5111891
Collected : 06-JUL-2000 08:45
Received : 06-JUL-2000 15:30
Collected By : RL99
Project No : 4469
Copies To : SCHD

Location: B-640 WATER TOWER

<u>Parameter(s)</u>	<u>Results</u>	<u>Units</u>	<u>Method Number</u>	<u>Analyzed</u>
CONDUCTIVITY	153	umhos/cm	EPA#120.1	06-JUL-2000
FIELD TEMPERATURE	67.5	0F	EPA#170.1	06-JUL-2000
PH	7.3	units	EPA#150.1	06-JUL-2000
TOTAL ALKALINITY	30.8	mg/L	SM#2320B	07-JUL-2000

S 0084

INORGANIC ANALYSIS DATA SHEET

EPA SAMPLE NO.

B-640_WATER_TOW

Lab Name: H2M_LABS, INC. _____

Contract: _____

Lab Code: H2MLAB

Case No.: _____

SAS No.: _____

SDG No.: BNLM097

Matrix (soil/water): WATER__

Lab Sample ID: 20000706-187

Level (low/med): LOW__

Date Received: 07/06/00__

Solids: _____

Concentration Units (ug/L or mg/kg dry weight): UG/L__

CAS No.	Analyte	Concentration	C	Q	M
7429-90-5	Aluminum				NR
7440-36-0	Antimony				NR
7440-38-2	Arsenic				NR
7440-39-3	Barium				NR
7440-41-7	Beryllium				NR
7440-43-9	Cadmium				NR
7440-70-2	Calcium	8410			P
7440-47-3	Chromium				NR
7440-48-4	Cobalt				NR
7440-50-8	Copper				NR
7439-89-6	Iron				NR
7439-92-1	Lead				NR
7439-95-4	Magnesium				NR
7439-96-5	Manganese				NR
7439-97-6	Mercury				NR
7440-02-0	Nickel				NR
7440-09-7	Potassium				NR
7782-49-2	Selenium				NR
7440-22-4	Silver				NR
7440-23-5	Sodium				NR
7440-28-0	Thallium				NR
7440-62-2	Vanadium				NR
7440-66-6	Zinc				NR
	Cyanide				NR

Color Before: _____

Clarity Before: _____

Texture: _____

Color After: _____

Clarity After: _____

Artifacts: _____

Comments:

B-640_WATER_TOWER
 DATE REPORTED: AUGUST 12, 2000

S 0083



575 Broad Hollow Road, Melville, NY 11747-5076
631)694-3040 . FAX:(631)420-8436 NYSDOH ID# 10478

BROOKHAVEN NATIONAL LAB.-BNLM
70 BELL AVE.
UPTON, NY 11973
Attn To : S. SCARPITTA/TONY ROSS
Federal ID : 5111891
Collected : 06-JUL-2000 08:15
Received : 06-JUL-2000 15:30
Collected By : RL99
Project No : 4469
Copies To : SCHD

Lab No. : 20000706-186

Remarks: PH, CONDUCTIVITY & TEMPERATURE
ANALYZED BY CLIENT.

Location: B-49 WATER TOWER

Sample Information...
Type : Potable Water
ROUTINE
Origin: DISTRIBUTION

<u>Parameter(s)</u>	<u>Results</u>	<u>Units</u>	<u>Method Number</u>	<u>Analyzed</u>
CONDUCTIVITY	128	umhos/cm	EPA#120.1	06-JUL-2000
FIELD TEMPERATURE	63.5	OF	EPA#170.1	06-JUL-2000
PH	7.3	units	EPA#150.1	06-JUL-2000
TOTAL ALKALINITY	27.0	mg/L	SM#2320B	07-JUL-2000

S 0082

INORGANIC ANALYSIS DATA SHEET

EPA SAMPLE NO.

B-49_WATER_TOW

Lab Name: H2M_LABS, INC.

Contract: _____

Lab Code: H2MLAB

Case No.: _____

SAS No.: _____

SDG No.: BNLM097

Matrix (soil/water): WATER

Lab Sample ID: 20000706-186

Level (low/med): LOW

Date Received: 07/06/00

Solids: _____

Concentration Units (ug/L or mg/kg dry weight):

UG/L

CAS No.	Analyte	Concentration	C	Q	M
7429-90-5	Aluminum				NR
7440-36-0	Antimony				NR
7440-38-2	Arsenic				NR
7440-39-3	Barium				NR
7440-41-7	Beryllium				NR
7440-43-9	Cadmium				NR
7440-70-2	Calcium	10500			P
7440-47-3	Chromium				NR
7440-48-4	Cobalt				NR
7440-50-8	Copper				NR
7439-89-6	Iron				NR
7439-92-1	Lead				NR
7439-95-4	Magnesium				NR
7439-96-5	Manganese				NR
7439-97-6	Mercury				NR
7440-02-0	Nickel				NR
7440-09-7	Potassium				NR
7782-49-2	Selenium				NR
7440-22-4	Silver				NR
7440-23-5	Sodium				NR
7440-28-0	Thallium				NR
7440-62-2	Vanadium				NR
7440-66-6	Zinc				NR
	Cyanide				NR

Color Before: _____

Clarity Before: _____

Texture: _____

Color After: _____

Clarity After: _____

Artifacts: _____

Comments:

B-49_WATER_TOWER
 DATE REPORTED: AUGUST 12, 2000

ATTACHMENT III

**Brookhaven National Laboratory
Potable Water Supply**

**Summary of 2000 Annual Lead and Copper Sampling
Analytical Results**

**SUMMARY OF 2000 ANNUAL LEAD AND COPPER SAMPLING
FOR THE BROOKHAVEN NATIONAL LABORATORY
POTABLE WATER SYSTEM**

ANALYTICAL DATA FOR COPPER

SAMPLE NUMBER	LOCATION DESCRIPTION	ANALYTICAL RESULT
1	Building 153	0.003 mg/L
2	Building 51	0.004 mg/L
3	Building 911	0.005 mg/L
4	Apartment 24D	0.007 mg/L
5	Apartment 1A	0.009 mg/L
6	Apartment 5B	0.011 mg/L
7	Apartment 28B	0.020 mg/L
8	Apartment 13D	0.021 mg/L
9	Apartment 9D	0.024 mg/L
10	Building 371	0.026 mg/L
11	Apartment 34E	0.028 mg/L
12	Building 535	0.030 mg/L
13	Apartment 6A	0.034 mg/L
14	Building 460	0.046 mg/L
15	Apartment 36A	0.056 mg/L
16	Apartment 4C	0.061 mg/L
17	Apartment 42A	0.071 mg/L
18	<i>Building 170</i>	<i>0.073 mg/L</i>
19	Building 703	0.13 mg/L
20	Apartment 26A	0.33 mg/L

** The ninetieth percentile sample has been highlighted for clarity. In accordance with the Federal Lead and Copper Rule, the concentration of copper within the ninetieth percentile sample must be less than 1.3 mg/L. All sample results are for first draw water samples collected from a bathroom or kitchen water tap that remained out-of-service for a minimum of six hours. Plant Engineering personnel collected all water samples.

**SUMMARY OF 2000 ANNUAL LEAD AND COPPER SAMPLING
FOR THE BROOKHAVEN NATIONAL LABORATORY
POTABLE WATER SYSTEM**

ANALYTICAL DATA FOR LEAD

SAMPLE NUMBER	LOCATION DESCRIPTION	ANALYTICAL RESULT
1	Building 153	0.0006 mg/L
2	Apartment 24D	0.0008 mg/L
3	Building 911	0.0008 mg/L
4	Building 371	0.0009 mg/L
5	Building 535	0.0009 mg/L
6	Building 703	0.0010 mg/L
7	Building 51	0.0011 mg/L
8	Building 460	0.0019 mg/L
9	Apartment 13D	0.0020 mg/L
10	Apartment 1A	0.0023 mg/L
11	Apartment 6A	0.0029 mg/L
12	Apartment 28B	0.0034 mg/L
13	Apartment 5B	0.0036 mg/L
14	Apartment 34E	0.0050 mg/L
15	Apartment 9D	0.0059 mg/L
16	Building 170	0.0072 mg/L
17	Apartment 36A	0.0101 mg/L
18	<i>Apartment 42A</i>	<i>0.0102 mg/L</i>
19	Apartment 26A	0.0161 mg/L
20	Apartment 4C	0.9420 mg/L

** The ninetieth percentile sample has been highlighted for clarity. In accordance with the Federal Lead and Copper Rule, the concentration of lead within the ninetieth percentile sample must be less than 0.015 mg/L. All sample results are for first draw water samples collected from a bathroom or kitchen water tap that remained out-of-service for a minimum of six hours. Plant Engineering personnel collected all water samples.

INORGANIC ANALYSIS DATA SHEET

BLDG327 APT.24D

Lab Name: H2M_LABS, INC.

Contract: _____

Lab Code: H2MLAB

Case No.: _____

SAS No.: _____

SDG No.: BNLM097A

Matrix (soil/water): WATER

Lab Sample ID: 20000711-171

Level (low/med): LOW

Date Received: 07/11/00

Solids: _____

Concentration Units (ug/L or mg/kg dry weight):

UG/L

Apartment 24D

CAS No.	Analyte	Concentration	C	Q	M
7429-90-5	Aluminum				NR
7440-36-0	Antimony				NR
7440-38-2	Arsenic				NR
7440-39-3	Barium				NR
7440-41-7	Beryllium				NR
7440-43-9	Cadmium				NR
7440-70-2	Calcium				NR
7440-47-3	Chromium				NR
7440-48-4	Cobalt				NR
7440-50-8	Copper	7.0	B		P
7439-89-6	Iron				NR
7439-92-1	Lead	0.80	B		F
7439-95-4	Magnesium				NR
7439-96-5	Manganese				NR
7439-97-6	Mercury				NR
7440-02-0	Nickel				NR
7440-09-7	Potassium				NR
7782-49-2	Selenium				NR
7440 22-4	Silver				NR
7440-23-5	Sodium				NR
7440-28-0	Thallium				NR
7440-62-2	Vanadium				NR
7440-66-6	Zinc				NR
	Cyanide				NR

Color Before: COLORLESS Clarity Before: CLEAR

Texture: _____

Color After: COLORLESS Clarity After: CLEAR

Artifacts: _____

Comments:
 BLDG327_APT. 24D_KITCHEN
 DATE REPORTED: AUGUST 12, 2000

S 0019

1
INORGANIC ANALYSIS DATA SHEET

EPA SAMPLE NO.

BLDG535 MEN'S SRM

Lab Name: H2M LABS, INC.

Contract: _____

Lab Code: H2MLAB

Case No.: _____

SAS No.: _____

SDG No.: BNLM097A

Matrix (soil/water): WATER

Lab Sample ID: 20000711-162

Level (low/med): LOW

Date Received: 07/11/00

Solids: _____

Concentration Units (ug/L or mg/kg dry weight):

UG/L

CAS No.	Analyte	Concentration	C	Q	M
7429-90-5	Aluminum				NR
7440-36-0	Antimony				NR
7440-38-2	Arsenic				NR
7440-39-3	Barium				NR
7440-41-7	Beryllium				NR
7440-43-9	Cadmium				NR
7440-70-2	Calcium				NR
7440-47-3	Chromium				NR
7440-48-4	Cobalt				NR
7440-50-8	Copper	29.5			P
7439-89-6	Iron				NR
7439-92-1	Lead	0.90	B		F
7439-95-4	Magnesium				NR
7439-96-5	Manganese				NR
7439-97-6	Mercury				NR
7440-02-0	Nickel				NR
7440-09-7	Potassium				NR
7782-49-2	Selenium				NR
7440-22-4	Silver				NR
7440-23-5	Sodium				NR
7440-28-0	Thallium				NR
7440-62-2	Vanadium				NR
7440-66-6	Zinc				NR
	Cyanide				NR

Building 535

Color Before: COLORLESS

Clarity Before: CLEAR

Texture: _____

Color After: COLORLESS

Clarity After: CLEAR

Artifacts: _____

Comments:

BLDG535 MEN'S ROOM

DATE REPORTED: AUGUST 12, 2000

1
INORGANIC ANALYSIS DATA SHEET

EPA SAMPLE NO.

BLDG51 WEST

Lab Name: H2M_LABS, INC. Contract: _____
 Lab Code: H2MLAB Case No.: _____ SAS No.: _____ SDG No.: BNLM097A
 Matrix (soil/water): WATER Lab Sample ID: 20000711-160
 Level (low/med): LOW Date Received: 07/11/00
 Solids: _____

Concentration Units (ug/L or mg/kg dry weight): UG/L

CAS No.	Analyte	Concentration	C	Q	M
7429-90-5	Aluminum				NR
7440-36-0	Antimony				NR
7440-38-2	Arsenic				NR
7440-39-3	Barium				NR
7440-41-7	Beryllium				NR
7440-43-9	Cadmium				NR
7440-70-2	Calcium				NR
7440-47-3	Chromium				NR
7440-48-4	Cobalt				NR
7440-50-8	Copper	3.7	B		P
7439-89-6	Iron				NR
7439-92-1	Lead	1.1	B		F
7439-95-4	Magnesium				NR
7439-96-5	Manganese				NR
7439-97-6	Mercury				NR
7440-02-0	Nickel				NR
7440-09-7	Potassium				NR
7782-49-2	Selenium				NR
7440-22-4	Silver				NR
7440-23-5	Sodium				NR
7440-28-0	Thallium				NR
7440-62-2	Vanadium				NR
7440-66-6	Zinc				NR
	Cyanide				NR

Building 51W

Color Before: COLORLESS Clarity Before: CLEAR Texture: _____
 Color After: COLORLESS Clarity After: CLEAR Artifacts: _____

Comments:
 BLDG51 WEST BATH ROOM
 DATE REPORTED: AUGUST 12, 2000

S 0028

INORGANIC ANALYSIS DATA SHEET

BLDG306 APT 13D

Lab Name: H2M_LABS, INC.

Contract: _____

Lab Code: H2MLAB

Case No.: _____

SAS No.: _____

SDG No.: BNLM097A

Matrix (soil/water): WATER

Lab Sample ID: 20000711-170

Level (low/med): LOW

Date Received: 07/11/00

Solids: _____

Concentration Units (ug/L or mg/kg dry weight): UG/L

CAS No.	Analyte	Concentration	C	Q	M
7429-90-5	Aluminum				NR
7440-36-0	Antimony				NR
7440-38-2	Arsenic				NR
7440-39-3	Barium				NR
7440-41-7	Beryllium				NR
7440-43-9	Cadmium				NR
7440-70-2	Calcium				NR
7440-47-3	Chromium				NR
7440-48-4	Cobalt				NR
7440-50-8	Copper	20.7	B		P
7439-89-6	Iron				NR
7439-92-1	Lead	2.0	B		F
7439-95-4	Magnesium				NR
7439-96-5	Manganese				NR
7439-97-6	Mercury				NR
7440-02-0	Nickel				NR
7440-09-7	Potassium				NR
7782-49-2	Selenium				NR
7440-22-4	Silver				NR
7440-23-5	Sodium				NR
7440-28-0	Thallium				NR
7440-62-2	Vanadium				NR
7440-66-6	Zinc				NR
	Cyanide				NR

Apartment 13

Color Before: COLORLESS Clarity Before: CLEAR

Texture: _____

Color After: COLORLESS Clarity After: CLEAR

Artifacts: _____

Comments:

BLDG306_APT_113D_KITCHEN
DATE REPORTED: AUGUST 12, 2000

1
INORGANIC ANALYSIS DATA SHEET

EPA SAMPLE NO.

BLDG361 APT.A

Lab Name: H2M_LABS, INC.

Contract: _____

Lab Code: H2MLAB

Case No.: _____

SAS No.: _____

SDG No.: BNLM097A

Matrix (soil/water): WATER

Lab Sample ID: 20000711-165

Level (low/med): LOW

Date Received: 07/11/00

Solids: _____

Concentration Units (ug/L or mg/kg dry weight):

UG/L

CAS No.	Analyte	Concentration	C	Q	M
7429-90-5	Aluminum				NR
7440-36-0	Antimony				NR
7440-38-2	Arsenic				NR
7440-39-3	Barium				NR
7440-41-7	Beryllium				NR
7440-43-9	Cadmium				NR
7440-70-2	Calcium				NR
7440-47-3	Chromium				NR
7440-48-4	Cobalt				NR
7440-50-8	Copper	9.4	B		P
7439-89-6	Iron				NR
7439-92-1	Lead	2.3	B		F
7439-95-4	Magnesium				NR
7439-96-5	Manganese				NR
7439-97-6	Mercury				NR
7440-02-0	Nickel				NR
7440-09-7	Potassium				NR
7782-49-2	Selenium				NR
7440-22-4	Silver				NR
7440-23-5	Sodium				NR
7440-28-0	Thallium				NR
7440-62-2	Vanadium				NR
7440-66-6	Zinc				NR
	Cyanide				NR

Apartment 1A

Color Before: COLORLESS Clarity Before: CLEAR

Texture: _____

Color After: COLORLESS Clarity After: CLEAR

Artifacts: _____

Comments:
BLDG361_APT.A_KITCHEN
DATE REPORTED: AUGUST 12, 2000

1
INORGANIC ANALYSIS DATA SHEET

EPA SAMPLE NO.

BLDG351 APT. 6A

Lab Name: H2M_LABS, INC.

Contract: _____

Lab Code: H2MLAB

Case No.: _____

SAS No.: _____

SDG No.: BNLM097A

Matrix (soil/water): WATER

Lab Sample ID: 20000711-168

Level (low/med): LOW

Date Received: 07/11/00

Solids: _____

Concentration Units (ug/L or mg/kg dry weight):

UG/L

CAS No.	Analyte	Concentration	C	Q	M
7429-90-5	Aluminum				NR
7440-36-0	Antimony				NR
7440-38-2	Arsenic				NR
7440-39-3	Barium				NR
7440-41-7	Beryllium				NR
7440-43-9	Cadmium				NR
7440-70-2	Calcium				NR
7440-47-3	Chromium				NR
7440-48-4	Cobalt				NR
7440-50-8	Copper	33.5			P
7439-89-6	Iron				NR
7439-92-1	Lead	2.9	B		F
7439-95-4	Magnesium				NR
7439-96-5	Manganese				NR
7439-97-6	Mercury				NR
7440-02-0	Nickel				NR
7440-09-7	Potassium				NR
7782-49-2	Selenium				NR
7440-22-4	Silver				NR
7440-23-5	Sodium				NR
7440-28-0	Thallium				NR
7440-62-2	Vanadium				NR
7440-66-6	Zinc				NR
	Cyanide				NR

Apartment 6A

Color Before: COLORLESS Clarity Before: CLEAR

Texture: _____

Color After: COLORLESS Clarity After: CLEAR

Artifacts: _____

Comments:

BLDG351 APT. 6A KITCHEN
DATE REPORTED: AUGUST 12, 2000

INORGANIC ANALYSIS DATA SHEET

BLDG328 APT.28B

Lab Name: H2M_LABS, INC.

Contract: _____

Lab Code: H2MLAB

Case No.: _____

SAS No.: _____

SDG No.: BNLM097A

Matrix (soil/water): WATER

Lab Sample ID: 20000711-173

Level (low/med): LOW

Date Received: 07/11/00

% Solids: _____

Concentration Units (ug/L or mg/kg dry weight):

UG/L

CAS No.	Analyte	Concentration	C	Q	M
7429-90-5	Aluminum				NR
7440-36-0	Antimony				NR
7440-38-2	Arsenic				NR
7440-39-3	Barium				NR
7440-41-7	Beryllium				NR
7440-43-9	Cadmium				NR
7440-70-2	Calcium				NR
7440-47-3	Chromium				NR
7440-48-4	Cobalt				NR
7440-50-8	Copper	19.9	B		P
7439-89-6	Iron				NR
7439-92-1	Lead	3.4			F
7439-95-4	Magnesium				NR
7439-96-5	Manganese				NR
7439-97-6	Mercury				NR
7440-02-0	Nickel				NR
7440-09-7	Potassium				NR
7782-49-2	Selenium				NR
7440-22-4	Silver				NR
7440-23-5	Sodium				NR
7440-28-0	Thallium				NR
7440-62-2	Vanadium				NR
7440-66-6	Zinc				NR
	Cyanide				NR

Apartment 28B

Color Before: COLORLESS Clarity Before: CLEAR

Texture: _____

Color After: COLORLESS Clarity After: CLEAR

Artifacts: _____

Comments: BLDG328 APT. 28B KITCHEN
DATE REPORTED: AUGUST 12, 2000

1
INORGANIC ANALYSIS DATA SHEET

EPA SAMPLE NO.

BLDG359 APT. 5B

Lab Name: H2M_LABS, INC.

Contract: _____

Lab Code: H2MLAB

Case No.: _____

SAS No.: _____

SDG No.: BNLM097A

Matrix (soil/water): WATER

Lab Sample ID: 20000711-167

Level (low/med): LOW

Date Received: 07/11/00

Solids: _____

Concentration Units (ug/L or mg/kg dry weight): _____ UG/L

CAS No.	Analyte	Concentration	C	Q	M
7429-90-5	Aluminum				NR
7440-36-0	Antimony				NR
7440-38-2	Arsenic				NR
7440-39-3	Barium				NR
7440-41-7	Beryllium				NR
7440-43-9	Cadmium				NR
7440-70-2	Calcium				NR
7440-47-3	Chromium				NR
7440-48-4	Cobalt				NR
7440-50-8	Copper	11.4	B		P
7439-89-6	Iron				NR
7439-92-1	Lead	3.6			F
7439-95-4	Magnesium				NR
7439-96-5	Manganese				NR
7439-97-6	Mercury				NR
7440-02-0	Nickel				NR
7440-09-7	Potassium				NR
7782-49-2	Selenium				NR
7440-22-4	Silver				NR
7440-23-5	Sodium				NR
7440-28-0	Thallium				NR
7440-62-2	Vanadium				NR
7440-66-6	Zinc				NR
	Cyanide				NR

Apartment 5B

Color Before: COLORLESS Clarity Before: CLEAR Texture: _____

Color After: COLORLESS Clarity After: CLEAR Artifacts: _____

Comments:
BLDG359 APT. 5B KITCHEN
DATE REPORTED: AUGUST 12, 2000

1
INORGANIC ANALYSIS DATA SHEET

EPA SAMPLE NO.

BLDG303 APT.34E

Lab Name: H2M_LABS, INC.

Contract: _____

Lab Code: H2MLAB

Case No.: _____

SAS No.: _____

SDG No.: ENLM097A

Matrix (soil/water): WATER

Lab Sample ID: 20000711-174

Level (low/med): LOW

Date Received: 07/11/00

Solids: _____

Concentration Units (ug/L or mg/kg dry weight):

UG/L

CAS No.	Analyte	Concentration	C	Q	M
7429-90-5	Aluminum				NR
7440-36-0	Antimony				NR
7440-38-2	Arsenic				NR
7440-39-3	Barium				NR
7440-41-7	Beryllium				NR
7440-43-9	Cadmium				NR
7440-70-2	Calcium				NR
7440-47-3	Chromium				NR
7440-48-4	Cobalt				NR
7440-50-8	Copper	28.0			P
7439-89-6	Iron				NR
7439-92-1	Lead	5.0			F
7439-95-4	Magnesium				NR
7439-96-5	Manganese				NR
7439-97-6	Mercury				NR
7440-02-0	Nickel				NR
7440-09-7	Potassium				NR
7782-49-2	Selenium				NR
7440-22-4	Silver				NR
7440-23-5	Sodium				NR
7440-28-0	Thallium				NR
7440-62-2	Vanadium				NR
7440-66-6	Zinc				NR
	Cyanide				NR

Apartment 34E

Color Before: COLORLESS

Clarity Before: CLEAR

Texture: _____

Color After: COLORLESS

Clarity After: CLEAR

Artifacts: _____

Comments:

BLDG303 APT. 34E KITCHEN
DATE REPORTED: AUGUST 12, 2000

INORGANIC ANALYSIS DATA SHEET

BLDG324 APT. 9D

Lab Name: H2M LABS, INC.

Contract: _____

Lab Code: H2MLAB

Case No.: _____

SAS No.: _____

SDG No.: BNLM097A

Matrix (soil/water): WATER

Lab Sample ID: 20000711-169

Level (low/med): LOW

Date Received: 07/11/00

Solids: _____

Concentration Units (ug/L or mg/kg dry weight): UG/L

CAS No.	Analyte	Concentration	C	Q	M
7429-90-5	Aluminum				NR
7440-36-0	Antimony				NR
7440-38-2	Arsenic				NR
7440-39-3	Barium				NR
7440-41-7	Beryllium				NR
7440-43-9	Cadmium				NR
7440-70-2	Calcium				NR
7440-47-3	Chromium				NR
7440-48-4	Cobalt				NR
7440-50-8	Copper	23.9	B		P
7439-89-6	Iron				NR
7439-92-1	Lead	5.9			F
7439-95-4	Magnesium				NR
7439-96-5	Manganese				NR
7439-97-6	Mercury				NR
7440-02-0	Nickel				NR
7440-09-7	Potassium				NR
7782-49-2	Selenium				NR
7440-22-4	Silver				NR
7440-23-5	Sodium				NR
7440-28-0	Thallium				NR
7440-62-2	Vanadium				NR
7440-66-6	Zinc				NR
	Cyanide				NR

Apartment 9D

Color Before: COLORLESS Clarity Before: CLEAR Texture: _____

Color After: COLORLESS Clarity After: CLEAR Artifacts: _____

Comments:
 BLDG324_APT. 9D_BATHROOM
 DATE_REPORTED: AUGUST_12, 2000

INORGANIC ANALYSIS DATA SHEET

COMPTON HSE

Lab Name: H2M_LABS, INC.

Contract:

Lab Code: H2MLAB Case No.:

SAS No.:

SDG No.: BNLM097A

Matrix (soil/water): WATER

Lab Sample ID: 20000711-179

Level (low/med): LOW

Date Received: 07/11/00

% Solids:

Concentration Units (ug/L or mg/kg dry weight):

UG/L

Building 170

CAS No.	Analyte	Concentration	C	Q	M
7429-90-5	Aluminum				NR
7440-36-0	Antimony				NR
7440-38-2	Arsenic				NR
7440-39-3	Barium				NR
7440-41-7	Beryllium				NR
7440-43-9	Cadmium				NR
7440-70-2	Calcium				NR
7440-47-3	Chromium				NR
7440-48-4	Cobalt				NR
7440-50-8	Copper	72.9			P
7439-89-6	Iron				NR
7439-92-1	Lead	7.2			F
7439-95-4	Magnesium				NR
7439-96-5	Manganese				NR
7439-97-6	Mercury				NR
7440-02-0	Nickel				NR
7440-09-7	Potassium				NR
7782-49-2	Selenium				NR
7440-22-4	Silver				NR
7440-23-5	Sodium				NR
7440-28-0	Thallium				NR
7440-62-2	Vanadium				NR
7440-66-6	Zinc				NR
	Cyanide				NR

Color Before: COLORLESS Clarity Before: CLEAR Texture:

Color After: COLORLESS Clarity After: CLEAR Artifacts:

Comments: COMPTON HOUSE 1ST FLOOR BATH DATE REPORTED: AUGUST 12, 2000

1
INORGANIC ANALYSIS DATA SHEET

EPA SAMPLE NO.

BLDG335 APT.36A

Lab Name: H2M_LABS, INC. Contract: _____
 Lab Code: H2MLAB Case No.: _____ SAS No.: _____ SDG No.: BNLM097A
 Matrix (soil/water): WATER Lab Sample ID: 20000711-175
 Level (low/med): LOW Date Received: 07/11/00

Solids: _____

Concentration Units (ug/L or mg/kg dry weight): UG/L

CAS No.	Analyte	Concentration	C	Q	M
7429-90-5	Aluminum				NR
7440-36-0	Antimony				NR
7440-38-2	Arsenic				NR
7440-39-3	Barium				NR
7440-41-7	Beryllium				NR
7440-43-9	Cadmium				NR
7440-70-2	Calcium				NR
7440-47-3	Chromium				NR
7440-48-4	Cobalt				NR
7440-50-8	Copper	56.1			P
7439-89-6	Iron				NR
7439-92-1	Lead	10.1			F
7439-95-4	Magnesium				NR
7439-96-5	Manganese				NR
7439-97-6	Mercury				NR
7440-02-0	Nickel				NR
7440-09-7	Potassium				NR
7782-49-2	Selenium				NR
7440-22-4	Silver				NR
7440-23-5	Sodium				NR
7440-28-0	Thallium				NR
7440-62-2	Vanadium				NR
7440-66-6	Zinc				NR
	Cyanide				NR

Apartment 36A

Color Before: COLORLESS Clarity Before: CLEAR Texture: _____
 Color After: COLORLESS Clarity After: CLEAR Artifacts: _____

Comments:

BLDG335 APT. 36A KITCHEN
 DATE REPORTED: AUGUST 12, 2000

INORGANIC ANALYSIS DATA SHEET

BLDG366 APT.42A

Lab Name: H2M LABS, INC.

Contract: _____

Lab Code: H2MLAB

Case No.: _____

SAS No.: _____

SDG No.: BNLM097A

Matrix (soil/water): WATER

Lab Sample ID: 20000711-176

Level (low/med): LOW

Date Received: 07/11/00

Solids: _____

Concentration Units (ug/L or mg/kg dry weight):

UG/L

CAS No.	Analyte	Concentration	C	Q	M
7429-90-5	Aluminum				NR
7440-36-0	Antimony				NR
7440-38-2	Arsenic				NR
7440-39-3	Barium				NR
7440-41-7	Beryllium				NR
7440-43-9	Cadmium				NR
7440-70-2	Calcium				NR
7440-47-3	Chromium				NR
7440-48-4	Cobalt				NR
7440-50-8	Copper	71.2			P
7439-89-6	Iron				NR
7439-92-1	Lead	10.2			F
7439-95-4	Magnesium				NR
7439-96-5	Manganese				NR
7439-97-6	Mercury				NR
7440-02-0	Nickel				NR
7440-09-7	Potassium				NR
7782-49-2	Selenium				NR
7440-22-4	Silver				NF
7440-23-5	Sodium				NR
7440-28-0	Thallium				NR
7440-62-2	Vanadium				NR
7440-66-6	Zinc				NR
	Cyanide				NR

Apartment 42A

Color Before: COLORLESS

Clarity Before: CLEAR

Texture: _____

Color After: COLORLESS

Clarity After: CLEAR

Artifacts: _____

Comments:

BLDG366_APT. 42A KITCHEN
DATE REPORTED: AUGUST 12, 2000

INORGANIC ANALYSIS DATA SHEET

BLDG302 APT.26A

Lab Name: H2M_LABS, INC. Contract: _____
 Lab Code: H2MLAB Case No.: _____ SAS No.: _____ SDG No.: BNLM097A
 Matrix (soil/water): WATER___ Lab Sample ID: 20000711-172
 Level (low/med): LOW___ Date Received: 07/11/00_
 Solids: _____

Concentration Units (ug/L or mg/kg dry weight): UG/L_

CAS No.	Analyte	Concentration	C	Q	M
7429-90-5	Aluminum				NR
7440-36-0	Antimony				NR
7440-38-2	Arsenic				NR
7440-39-3	Barium				NR
7440-41-7	Beryllium				NR
7440-43-9	Cadmium				NR
7440-70-2	Calcium				NR
7440-47-3	Chromium				NR
7440-48-4	Cobalt				NR
7440-50-8	Copper	328			P
7439-89-6	Iron				NR
7439-92-1	Lead	16.1			F
7439-95-4	Magnesium				NR
7439-96-5	Manganese				NR
7439-97-6	Mercury				NR
7440-02-0	Nickel				NR
7440-09-7	Potassium				NR
7782-49-2	Selenium				NR
7440-22-4	Silver				NR
7440-23-5	Sodium				NR
7440-28-0	Thallium				NR
7440-62-2	Vanadium				NR
7440-66-6	Zinc				NR
	Cyanide				NR

Apartment 26A

Color Before: COLORLESS Clarity Before: CLEAR___ Texture: _____
 Color After: COLORLESS Clarity After: CLEAR___ Artifacts: _____

Comments:
 BLDG302_APT. 26A_KITCHEN_____
 DATE REPORTED: AUGUST 12, 2000 _____

1
INORGANIC ANALYSIS DATA SHEET

EPA SAMPLE NO.

BLDG350 APT. 4C

Lab Name: H2M_LABS, INC.

Contract: _____

Lab Code: H2MLAB

Case No.: _____

SAS No.: _____

SDG No.: BNLM097A

Matrix (soil/water): WATER

Lab Sample ID: 20000711-166

Level (low/med): LOW

Date Received: 07/11/00

Solids: _____

Concentration Units (ug/L or mg/kg dry weight):

UG/L

CAS No.	Analyte	Concentration	C	Q	M
7429-90-5	Aluminum				NR
7440-36-0	Antimony				NR
7440-38-2	Arsenic				NR
7440-39-3	Barium				NR
7440-41-7	Beryllium				NR
7440-43-9	Cadmium				NR
7440-70-2	Calcium				NR
7440-47-3	Chromium				NR
7440-48-4	Cobalt				NR
7440-50-8	Copper	61.1			P
7439-89-6	Iron				NR
7439-92-1	Lead	942			F
7439-95-4	Magnesium				NR
7439-96-5	Manganese				NR
7439-97-6	Mercury				NR
7440-02-0	Nickel				NR
7440-09-7	Potassium				NR
7782-49-2	Selenium				NR
7440-22-4	Silver				NR
7440-23-5	Sodium				NR
7440-28-0	Thallium				NR
7440-62-2	Vanadium				NR
7440-66-6	Zinc				NR
	Cyanide				NR

Apartment 4C

Color Before: COLORLESS, Clarity Before: CLEAR

Texture: _____

Color After: COLORLESS, Clarity After: CLEAR

Artifacts: _____

Comments:

BLDG350 APT. 4C KITCHEN

DATE REPORTED: AUGUST 12, 2000

ATTACHMENT IV

**Brookhaven National Laboratory
Potable Water Supply**

**2000 Semi-Annual Inorganic and Nitrate/Nitrite Analyses for
the BNL Potable Water Distribution System and Potable Wells**



75 Broad Hollow Road, Melville, NY 11747-5076
 (631)694-3040, FAX:(631)420-8436 NYSDOH ID# 10478

BROOKHAVEN NATIONAL LAB.-BNLM
70 BELL AVE.
UPTON, NY 11973

Lab No. : 20000706-197

Sample Information...
 Type : Potable Water
 ROUTINE
 Origin: DISTRIBUTION

Attn To : S. SCARPITTA/TONY ROSS
 Federal ID : 5111891
 Collected : 06-JUL-2000 13:50
 Received : 06-JUL-2000 15:30
 Collected By : RL99
 Project No : 4469
 Copies To : SCHD

Location: B-185 MENS ROOM

Parameter(s)	Results	Units	Limit	Method Number	Analyzed
AMMONIA (AS N)	<0.10	mg/L		EPA#350.1	25-JUL-2000
CHLORIDE	16.9	mg/L	250	EPA#325.2	13-JUL-2000
COLOR	5	units	15	EPA#110.2	07-JUL-2000
CONDUCTIVITY	164	umhos/cm		EPA#120.1	21-JUL-2000
DETERGENTS (MBAS)	<0.08	mg/L		EPA#425.1	08-JUL-2000
FLUORIDE	<0.10	mg/L	2.2	EPA#340.2	11-JUL-2000
NITRATE (AS N)	0.54	mg/L	10.0	EPA#353.2	07-JUL-2000
NITRITE (AS N)	<0.1	mg/L	1.0	EPA#353.2	07-JUL-2000
ODOR	0	units	3	EPA#140.1	07-JUL-2000
PH	7.0	units		EPA#150.1	06-JUL-2000
SULFATE	<5.0	mg/L	250	EPA#375.2	20-JUL-2000

Result(s) reported meet(s) NEW YORK STATE/USEPA limits for Potable Water

S 0100

QA/QC

Report for client information only



75 Broad Hollow Road, Melville, NY 11747-5076
(631)694-3040 . FAX:(631)420-8436 NYSDOH ID# 10478

BROOKHAVEN NATIONAL LAB.-BNLM
70 BELL AVE.
UPTON, NY 11973

Lab No. : 20000706-191

Sample Information...
Type : Potable Water
ROUTINE
Origin: RAW WELL

Attn To : S. SCARPITTA/TONY ROSS
Federal ID : 5111891
Collected : 06-JUL-2000 11:15
Received : 06-JUL-2000 15:30 Location: WELL-4
Collected By : RL99
Project No : 4469
Copies To : SCHO

Parameter(s)	Results	Units	Limit	Method Number	Analyzed
AMMONIA (AS N)	<0.10	mg/L		EPA#350.1	25-JUL-2000
CHLORIDE	17.5	mg/L	250	EPA#325.2	13-JUL-2000
* COLOR	* 40	units	15	EPA#110.2	07-JUL-2000
CONDUCTIVITY	105	umhos/cm		EPA#120.1	21-JUL-2000
DETERGENTS (MBAS)	<0.08	mg/L		EPA#425.1	08-JUL-2000
FLUORIDE	<0.10	mg/L	2.2	EPA#340.2	11-JUL-2000
NITRATE (AS N)	0.26	mg/L	10.0	EPA#353.2	07-JUL-2000
NITRITE (AS N)	0.1	mg/L	1.0	EPA#353.2	07-JUL-2000
ODOR	0	units	3	EPA#140.1	07-JUL-2000
PH	6.0	units		EPA#150.1	06-JUL-2000
SULFATE	26.4	mg/L	250	EPA#375.2	20-JUL-2000

1-*Result(s) exceed(s) NEW YORK STATE/USEPA limits for Potable Water

S 0088



575 Broad Hollow Road, Melville, NY 11747-5076
(631)694-3040 FAX:(631)420-8436 NYSDOH ID# 10478

BROOKHAVEN NATIONAL LAB.-BNLM
70 BELL AVE.
UPTON, NY 11973
Attn To : S. SCARPITTA/TONY ROSS
Federal ID : 5111891
Collected : 06-JUL-2000 11:10
Received : 06-JUL-2000 15:30
Collected By : RL99
Project No : 4469
Copies To : SCHD

Lab No. : 20000706-192

Sample Information...
Type : Potable Water
ROUTINE
Origin: RAW WELL

Location: WELL-6

Parameter(s)	Results	Units	Limit	Method Number	Analyzed
AMMONIA (AS N)	<0.10	mg/L		EPA#350.1	25-JUL-2000
CHLORIDE	12.3	mg/L	250	EPA#325.2	13-JUL-2000
* COLOR	* 50	units	15	EPA#110.2	07-JUL-2000
CONDUCTIVITY	84	umhos/cm		EPA#120.1	21-JUL-2000
DETERGENTS (MBAS)	<0.08	mg/L		EPA#425.1	08-JUL-2000
FLUORIDE	<0.10	mg/L	2.2	EPA#340.2	11-JUL-2000
NITRATE (AS N)	0.20	mg/L	10.0	EPA#353.2	07-JUL-2000
NITRITE (AS N)	0.1	mg/L	1.0	EPA#353.2	07-JUL-2000
ODOR	0	units	3	EPA#140.1	07-JUL-2000
PH	6.0	units		EPA#150.1	06-JUL-2000
SULFATE	16.8	mg/L	250	EPA#375.2	20-JUL-2000

1.*-Result(s) exceed(s) NEW YORK STATE/USEPA limits for Potable Water

S 0090

Date Issued : 08/14/2000

ORIGINAL

Report for client information only

Laboratory Director



575 Broad Hollow Road, Melville, NY 11747-5076
(631)694-3840 . FAX:(631)420-8436 NYSDOH ID# 10478

BROOKHAVEN NATIONAL LAB.-BNLM
70 BELL AVE.
UPTON, NY 11973

Lab No. : 20000706-193

Sample Information...

Type : Potable Water

ROUTINE

Origin: RAW WELL

Attn To : S. SCARPITTA/TONY ROSS

Federal ID : 5111891

Collected : 06-JUL-2000 11:00

Received : 06-JUL-2000 15:30

Location: WELL-7

Collected By : RL99

Project No : 4469

Copies To : SCHD

Parameter(s)	Results	Units	Limit	Method Number	Analyzed
AMMONIA (AS N)	<0.10	mg/L		EPA#350.1	25-JUL-2000
CHLORIDE	20.7	mg/L	250	EPA#325.2	13-JUL-2000
* COLOR	* 20	units	15	EPA#110.2	07-JUL-2000
CONDUCTIVITY	116	umhos/cm		EPA#120.1	21-JUL-2000
DETERGENTS (MBAS)	<0.08	mg/L		EPA#425.1	08-JUL-2000
FLUORIDE	<0.10	mg/L	2.2	EPA#340.2	11-JUL-2000
NITRATE (AS N)	0.32	mg/L	10.0	EPA#353.2	07-JUL-2000
NITRITE (AS N)	<0.01	mg/L	1.0	EPA#353.2	07-JUL-2000
ODOR	0	units	3	EPA#140.1	07-JUL-2000
PH	6.0	units		EPA#150.1	06-JUL-2000
SULFATE	<5.0	mg/L	250	EPA#375.2	20-JUL-2000


1.*-Result(s) exceed(s) NEW YORK STATE/USEPA limits for Potable Water

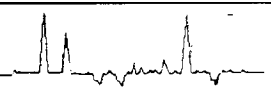
S C092

Date Issued : 08/14/2000

ORIGINAL

Report for client information only


Laboratory Director



575 Broad Hollow Road, Melville, NY 11747-5076
(631)694-3040 . FAX:(631)420-8436 NYSDOH ID# 10478

BROOKHAVEN NATIONAL LAB.-BNLM
70 BELL AVE.
UPTON, NY 11973

Lab No. : 20000706-194

Sample Information...
Type : Potable Water
ROUTINE
Origin: RAW WELL

Attn To : S. SCARPITTA/TONY ROSS
Federal ID : 5111891
Collected : 06-JUL-2000 12:50
Received : 06-JUL-2000 15:30 Location: WELL-10
Collected By : RL99
Project No : 4469
Copies To : SCHO

Parameter(s)	Results	Units	Limit	Method Number	Analyzed
AMMONIA (AS N)	<0.10	mg/L		EPA#350.1	25-JUL-2000
CHLORIDE	11.0	mg/L	250	EPA#325.2	13-JUL-2000
COLOR	5	units	15	EPA#110.2	07-JUL-2000
CONDUCTIVITY	105	umhos/cm		EPA#120.1	21-JUL-2000
DETERGENTS (MBAS)	<0.08	mg/L		EPA#425.1	08-JUL-2000
FLUORIDE	<0.10	mg/L	2.2	EPA#340.2	11-JUL-2000
NITRATE (AS N)	0.21	mg/L	10.0	EPA#353.2	07-JUL-2000
NITRITE (AS N)	0.02	mg/L	1.0	EPA#353.2	07-JUL-2000
ODOR	0	units	3	EPA#140.1	07-JUL-2000
PH	7.0	units		EPA#150.1	06-JUL-2000
SULFATE	7.7	mg/L	250	EPA#375.2	20-JUL-2000

Result(s) reported meet(s) NEW YORK STATE/USEPA limits for Potable Water

S 0094

Mad Hollow Road, Melville, NY 11747-5076
34-3040 . FAX:(631)420-8436 NYSDOH ID# 10478

ROCKHAVEN NATIONAL LAB.-BNLM
BELL AVE.
ROCKY HILL, NY 11973

Lab No. : 20000706-195

Sample information...
Type : Potable Water
ROUTINE
Origin: RAW WELL

Client To : S. SCARPITTA/TONY ROSS
Federal ID : 5111891
Collected : 06-JUL-2000 12:35
Received : 06-JUL-2000 15:30 Location: WELL-11
Collected By : RL99
Project No : 4469
Copies To : SCHD


Parameter(s)	Results	Units	Limit	Method Number	Analyzed
AMMONIA (AS N)	<0.10	mg/L		EPA#350.1	25-JUL-2000
CHLORIDE	21.9	mg/L	250	EPA#325.2	13-JUL-2000
COLOR	<5	units	15	EPA#110.2	07-JUL-2000
CONDUCTIVITY	137	umhos/cm		EPA#120.1	21-JUL-2000
DETERGENTS (MBAS)	<0.08	mg/L	2.2	EPA#425.1	08-JUL-2000
FLUORIDE	<0.10	mg/L	2.2	EPA#340.2	11-JUL-2000
NITRATE (AS N)	0.50	mg/L	10.0	EPA#353.2	07-JUL-2000
NITRITE (AS N)	<0.01	mg/L	1.0	EPA#353.2	07-JUL-2000
ODOR	0	units	3	EPA#140.1	07-JUL-2000
PH	6.1	units		EPA#150.1	06-JUL-2000
SULFATE	<5.0	mg/L	250	EPA#375.2	20-JUL-2000

Result(s) reported meet(s) NEW YORK STATE/USEPA limits for Potable Water

S 0096

Date Issued : 08/14/2000

ORIGINAL
Report for client information only


Laboratory Director



175 Broad Hollow Road, Melville, NY 11747-5076
631)694-3040 . FAX:(631)420-8436 NYSDOH ID# 10478

BROOKHAVEN NATIONAL LAB.-BNLM
70 BELL AVE.
UPTON, NY 11973

Lab No. : 20000706-196

Sample Information...

Type : Potable Water
ROUTINE
Origin: RAW WELL

Attn To : S. SCARPITTA/TONY ROSS

Federal ID : 5111891

Collected : 06-JUL-2000 11:25

Received : 06-JUL-2000 15:30 Location: WELL-12

Collected By : RL99

Project No : 4469

Copies To : SCHD

Parameter(s)	Results	Units	Limit	Method Number	Analyzed
AMMONIA (AS N)	<0.10	mg/L		EPA#350.1	25-JUL-2000
CHLORIDE	12.3	mg/L	250	EPA#325.2	13-JUL-2000
COLOR	<5	units	15	EPA#110.2	07-JUL-2000
CONDUCTIVITY	112	umhos/cm		EPA#120.1	21-JUL-2000
DETERGENTS (MBAS)	<0.08	mg/L		EPA#425.1	08-JUL-2000
FLUORIDE	<0.10	mg/L	2.2	EPA#340.2	11-JUL-2000
NITRATE (AS N)	0.41	mg/L	10.0	EPA#353.2	07-JUL-2000
NITRITE (AS N)	<0.01	mg/L	1.0	EPA#353.2	07-JUL-2000
ODOR	0	units	3	EPA#140.1	07-JUL-2000
PH	7.0	units		EPA#150.1	06-JUL-2000
SULFATE	<5.0	mg/L	250	EPA#375.2	20-JUL-2000

Result(s) reported meet(s) NEW YORK STATE/USEPA limits for Potable Water

S 0098

NYSDEC - ASP
1
INORGANIC ANALYSIS DATA SHEET

EPA SAMPLE NO.

B-185_MEN'S RM

Lab Name: H2M_LABS, INC. Contract: _____
 Lab Code: H2MLAB Case No.: _____ SAS No.: _____ SDG No.: BNLM097
 Matrix (soil/water): WATER_____ Lab Sample ID: 20000706-197
 Level (low/med): LOW_____ Date Received: 07/06/00_
 Solids: _____

Concentration Units (ug/L or mg/kg dry weight): UG/L_

CAS No.	Analyte	Concentration	C	Q	M
7429-90-5	Aluminum				NR
7440-36-0	Antimony	0.80	U		F
7440-38-2	Arsenic	0.80	U		F
7440-39-3	Barium	23.4	B		P
7440-41-7	Beryllium	0.20	U		P
7440-43-9	Cadmium	0.60	U		P
7440-70-2	Calcium				NR
7440-47-3	Chromium	2.3	B		P
7440-48-4	Cobalt				NR
7440-50-8	Copper				NR
7439-89-6	Iron	354			P
7439-92-1	Lead	2.2	B		F
7439-95-4	Magnesium				NR
7439-96-5	Manganese	195			P
7439-97-6	Mercury	0.10	U		CV
7440-02-0	Nickel	3.7	B		P
7440-09-7	Potassium				NR
7782-49-2	Selenium	0.70	U		F
7440-22-4	Silver				NR
7440-23-5	Sodium	22200			P
7440-28-0	Thallium	0.50	B		F
7440-62-2	Vanadium				NR
7440-66-6	Zinc	31.3			P
	Cyanide	10.0	U		CA

Color Before: COLORLESS Clarity Before: CLEAR_____ Texture: _____
 Color After: COLORLESS Clarity After: CLEAR_____ Artifacts: _____

Comments:
 DATE REPORTED: AUGUST 12, 2000_____

INORGANIC ANALYSIS DATA SHEET

EPA SAMPLE NO.

WELL_4

Lab Name: H2M_LABS, INC.

Contract: _____

Lab Code: H2MLAB

Case No.: _____

SAS No.: _____

SDG No.: BNLM097

Matrix (soil/water): WATER__

Lab Sample ID: 20000706-191

Level (low/med): LOW__

Date Received: 07/06/00_

Solids: _____

Concentration Units (ug/L or mg/kg dry weight):

UG/L_

CAS No.	Analyte	Concentration	C	Q	M
7429-90-5	Aluminum				NR
7440-36-0	Antimony	0.80	U		F
7440-38-2	Arsenic	1.8	B		F
7440-39-3	Barium	25.5	B		P
7440-41-7	Beryllium	0.20	U		P
7440-43-9	Cadmium	0.60	U		P
7440-70-2	Calcium				NR
7440-47-3	Chromium	2.4	B		P
7440-48-4	Cobalt				NR
7440-50-8	Copper				NR
7439-89-6	Iron	6380			P
7439-92-1	Lead	1.3	B		F
7439-95-4	Magnesium				NR
7439-96-5	Manganese	170			P
7439-97-6	Mercury	0.10	U		CV
7440-02-0	Nickel	2.0	U		P
7440-09-7	Potassium				NR
7782-49-2	Selenium	1.0	B	W	F
7440-22-4	Silver				NR
7440-23-5	Sodium	12400			P
7440-28-0	Thallium	0.70	B		F
7440-62-2	Vanadium				NR
7440-66-6	Zinc	5.3	B		P
	Cyanide	10.0	U		CA

Color Before: COLORLESS Clarity Before: CLEAR__

Texture: _____

Color After: COLORLESS Clarity After: CLEAR__

Artifacts: _____

Comments:

DATE REPORTED: AUGUST 12, 2000 _____

S 0087

NYSDEC - ASP
1
INORGANIC ANALYSIS DATA SHEET

EPA SAMPLE NO.

WELL_6

Lab Name: H2M_LABS, INC. _____

Contract: _____

Lab Code: H2MLAB Case No.: _____

SAS No.: _____

SDG No.: BNLM097

Matrix (soil/water): WATER _____

Lab Sample ID: 20000706-192

Level (low/med): LOW _____

Date Received: 07/06/00_

Solids: _____

Concentration Units (ug/L or mg/kg dry weight): UG/L_

CAS No.	Analyte	Concentration	C	Q	M
7429-90-5	Aluminum				NR
7440-36-0	Antimony	0.80	U		F
7440-38-2	Arsenic	0.80	B		F
7440-39-3	Barium	21.1	B		P
7440-41-7	Beryllium	0.20	U		P
7440-43-9	Cadmium	0.60	U		P
7440-70-2	Calcium				NR
7440-47-3	Chromium	1.8	B		P
7440-48-4	Cobalt				NR
7440-50-8	Copper				NR
7439-89-6	Iron	4630			P
7439-92-1	Lead	3.6			F
7439-95-4	Magnesium				NR
7439-96-5	Manganese	78.9			P
7439-97-6	Mercury	0.10	J		CV
7440-02-0	Nickel	4.6	B		P
7440-09-7	Potassium				NR
7782-49-2	Selenium	0.70	U		F
7440-22-4	Silver				NR
7440-23-5	Sodium	8880			P
7440-28-0	Thallium	0.50	U		F
7440-62-2	Vanadium				NR
7440-66-6	Zinc	15.5	B		P
	Cyanide	10.0	U		CA

Color Before: COLORLESS Clarity Before: CLEAR_

Texture: _____

Color After: COLORLESS Clarity After: CLEAR_

Artifacts: _____

Comments:

DATE REPORTED: AUGUST 12, 2000 _____

S 0089

INORGANIC ANALYSIS DATA SHEET

EPA SAMPLE NO.

WELL_7

Lab Name: H2M_LABS, INC.

Contract: _____

Lab Code: H2MLAB

Case No.: _____

SAS No.: _____

SDG No.: BNLM097

Matrix (soil/water): WATER

Lab Sample ID: 20000706-193

Level (low/med): LOW

Date Received: 07/06/00

Solids: _____

Concentration Units (ug/L or mg/kg dry weight):

UG/L

CAS No.	Analyte	Concentration	C	Q	M
7429-90-5	Aluminum				NR
7440-36-0	Antimony	0.80	U		F
7440-38-2	Arsenic	1.1	B		F
7440-39-3	Barium	19.5	B		P
7440-41-7	Beryllium	0.20	U		P
7440-43-9	Cadmium	0.60	U		P
7440-70-2	Calcium				NR
7440-47-3	Chromium	1.6	U		P
7440-48-4	Cobalt				NR
7440-50-8	Copper				NR
7439-89-6	Iron	1560			P
7439-92-1	Lead	0.50	U		F
7439-95-4	Magnesium				NR
7439-96-5	Manganese	58.5			P
7439-97-6	Mercury	0.10	U		CV
7440-02-0	Nickel	2.5	B		P
7440-09-7	Potassium				NR
7782-49-2	Selenium	0.70	U		F
7440-22-4	Silver				NR
7440-23-5	Sodium	11600			P
7440-28-0	Thallium	0.50	U		F
7440-62-2	Vanadium				NR
7440-66-6	Zinc	4.9	B		P
	Cyanide	10.0	U		CA

Color Before: COLORLESS Clarity Before: CLEAR

Texture: _____

Color After: COLORLESS Clarity After: CLEAR

Artifacts: _____

Comments:

DATE REPORTED: AUGUST 12, 2000

S 0091

NYSDEC - ASP
1
INORGANIC ANALYSIS DATA SHEET

EPA SAMPLE NO.

WELL_10

Lab Name: H2M_LABS, INC. _____

Contract: _____

Lab Code: H2MLAB Case No.: _____

SAS No.: _____

SDG No.: BNLM097

Matrix (soil/water): WATER__

Lab Sample ID: 20000706-194

Level (low/med): LOW__

Date Received: 07/06/00_

Solids: _____

Concentration Units (ug/L or mg/kg dry weight): _____ UG/L__

CAS No.	Analyte	Concentration	C	Q	M
7429-90-5	Aluminum				NR
7440-36-0	Antimony	0.80	U		F
7440-38-2	Arsenic	0.80	U		F
7440-39-3	Barium	16.8	B		P
7440-41-7	Beryllium	0.20	U		P
7440-43-9	Cadmium	0.60	U		P
7440-70-2	Calcium				NR
7440-47-3	Chromium	1.6	U		P
7440-48-4	Cobalt				NR
7440-50-8	Copper				NR
7439-89-6	Iron	335			P
7439-92-1	Lead	2.1	B		F
7439-95-4	Magnesium				NR
7439-96-5	Manganese	10.7	B		P
7439-97-6	Mercury	0.10	U		CV
7440-02-0	Nickel	2.0	U		P
7440-09-7	Potassium				NR
7782-49-2	Selenium	0.70	U		F
7440-22-4	Silver				NR
7440-23-5	Sodium	13400			P
7440-28-0	Thallium	0.50	U		F
7440-62-2	Vanadium				NR
7440-66-6	Zinc	18.2	B		P
	Cyanide	10.0	U		CA

Color Before: COLORLESS Clarity Before: CLEAR__

Texture: _____

Color After: COLORLESS Clarity After: CLEAR__

Artifacts: _____

Comments:

DATE REPORTED: AUGUST 12, 2000 _____

S 0093

INORGANIC ANALYSIS DATA SHEET

EPA SAMPLE NO.

WELL_11

Lab Name: H2M_LABS, INC. _____

Contract: _____

Lab Code: H2MLAB

Case No.: _____

SAS No.: _____

SDG No.: BNLM097

Matrix (soil/water): WATER__

Lab Sample ID: 20000706-195

Level (low/med): LOW__

Date Received: 07/06/00__

Solids: _____

Concentration Units (ug/L or mg/kg dry weight):

UG/L__

CAS No.	Analyte	Concentration	C	Q	M
7429-90-5	Aluminum				NR
7440-36-0	Antimony	0.80	U		F
7440-38-2	Arsenic	0.80	U		F
7440-39-3	Barium	32.1	B		P
7440-41-7	Beryllium	0.20	U		P
7440-43-9	Cadmium	0.60	U		P
7440-70-2	Calcium				NR
7440-47-3	Chromium	1.6	U		P
7440-48-4	Cobalt				NR
7440-50-8	Copper				NR
7439-89-6	Iron	14.3	B		P
7439-92-1	Lead	0.80	B		F
7439-95-4	Magnesium				NR
7439-96-5	Manganese	0.56	B		P
7439-97-6	Mercury	0.10	U		CV
7440-02-0	Nickel	2.0	U		P
7440-09-7	Potassium				NR
7782-49-2	Selenium	0.70	U	W	F
7440-22-4	Silver				NR
7440-23-5	Sodium	14400			P
7440-28-0	Thallium	0.60	B		F
7440-62-2	Vanadium				NR
7440-66-6	Zinc	5.3	B		P
	Cyanide	10.0	U		CA

Color Before: COLORLESS Clarity Before: CLEAR__

Texture: _____

Color After: COLORLESS Clarity After: CLEAR__

Artifacts: _____

Comments:

DATE REPORTED: AUGUST 12, 2000 _____

S 0095

INORGANIC ANALYSIS DATA SHEET

EPA SAMPLE NO.

WELL_12

Lab Name: H2M_LABS,_INC._____

Contract: _____

Lab Code: H2MLAB

Case No.: _____

SAS No.: _____

SDG No.: BNLM097

Matrix (soil/water): WATER__

Lab Sample ID: 20000706-196

Level (low/med): LOW__

Date Received: 07/06/00_

Solids: _____

Concentration Units (ug/L or mg/kg dry weight):

UG/L_

CAS No.	Analyte	Concentration	C	Q	M
7429-90-5	Aluminum				NR
7440-36-0	Antimony	0.80	U		F
7440-38-2	Arsenic	0.80	U		F
7440-39-3	Barium	18.2	B		P
7440-41-7	Beryllium	0.20	U		P
7440-43-9	Cadmium	0.60	U		P
7440-70-2	Calcium				NR
7440-47-3	Chromium	1.6	U		P
7440-48-4	Cobalt				NR
7440-50-8	Copper				NR
7439-89-6	Iron	20.9	B		P
7439-92-1	Lead	0.50	U		F
7439-95-4	Magnesium				NR
7439-96-5	Manganese	0.50	U		P
7439-97-6	Mercury	0.10	U		CV
7440-02-0	Nickel	2.0	U		P
7440-09-7	Potassium				NR
7782-49-2	Selenium	0.70	U		F
7440-22-4	Silver				NR
7440-23-5	Sodium	11500			P
7440-28-0	Thallium	0.80	B		F
7440-62-2	Vanadium				NR
7440-66-6	Zinc	1.7	B		P
	Cyanide	10.0	U		CA

Color Before: COLORLESS

Clarity Before: CLEAR__

Texture: _____

Color After: COLORLESS

Clarity After: CLEAR__

Artifacts: _____

Comments:

DATE REPORTED: AUGUST 12, 2000_____

ATTACHMENT V

**Brookhaven National Laboratory
Potable Water Supply**

**2000 Third Quarter Principal Organic Compound Analyses for
the BNL Potable Water Distribution System and Potable Water Wells**

575 Broad Hollow Road, Melville, NY 11747-5076
 (631)694-3040 . FAX:(631)420-8436 NYSDOH ID# 10478



BROOKHAVEN NATIONAL LAB.-BNLM
 70 BELL AVE.
 UPTON, NY 11973

Lab No. : 20000706-157

Sample Information...
 Type : Potable Water
 ROUTINE
 Origin: TREATED WELL

Attn To : S. SCARPITTA/TONY ROSS
 Federal ID : 5111891
 Collected : 06-JUL-2000 11:45
 Received : 06-JUL-2000 15:30
 Collected By : RL99
 Project No : 4469
 Copies To : SCHD

Location: BUILDING 624-WTP

VOLATILE ORGANICS (METHOD 502.2) - ug/L

Run Number : 2649
 Date Analyzed : 17-JUL-2000

Parameter(s)	Results	Limit	Parameter(s)	Results	Limit
DICHLORODIFLUOROMETHANE	<0.5	5.0	1,2,3-TRICHLOROPROPANE	<0.5	5.0
CHLOROMETHANE	<0.5	5.0	2-CHLOROTOLUENE	<0.5	5.0
VINYL CHLORIDE	<0.5	2.0	4-CHLOROTOLUENE	<0.5	5.0
BROMOMETHANE	<0.5	5.0	M-DICHLOROBENZENE	<0.5	5.0
CHLOROETHANE	<0.5	5.0	P-DICHLOROBENZENE	<0.5	5.0
FLUOROTRICHLOROMETHANE	<0.5	5.0	O-DICHLOROBENZENE	<0.5	5.0
1,1-DICHLOROETHENE	<0.5	5.0	1,2,4-TRICHLOROBENZENE	<0.5	5.0
METHYLENE CHLORIDE	<0.5	5.0	HEXACHLOROBUTADIENE	<0.5	5.0
TRANS-1,2-DICHLOROETHENE	<0.5	5.0	1,2,3-TRICHLOROBENZENE	<0.5	5.0
1,1-DICHLOROETHANE	<0.5	5.0	BENZENE	<0.5	5.0
CIS-1,2-DICHLOROETHENE	<0.5	5.0	TOLUENE	<0.5	5.0
2,2-DICHLOROPROPANE	<0.5	5.0	ETHYLBENZENE	<0.5	5.0
BROMOCHLOROMETHANE	<0.5	5.0	1,3-XYLENE	<0.5	5.0
CHLOROFORM	1.3	50	1,4-XYLENE	<0.5	5.0
1,1,1-TRICHLOROETHANE	<0.5	5.0	1,2-XYLENE	<0.5	5.0
CARBON TETRACHLORIDE	<0.5	5.0	STYRENE	<0.5	5.0
1,1-DICHLOROPROPENE	<0.5	5.0	ISOPROPYLBENZENE(CUMENE)	<0.5	5.0
1,2-DICHLOROETHANE	<0.5	5.0	N-PROPYLBENZENE	<0.5	5.0
TRICHLOROETHENE	<0.5	5.0	1,3,5-TRIMETHYLBENZENE	<0.5	5.0
1,2-DICHLOROPROPANE	<0.5	5.0	TERT-BUTYLBENZENE	<0.5	5.0
DIBROMOMETHANE	<0.5	5.0	1,2,4-TRIMETHYLBENZENE	<0.5	5.0
BROMODICHLOROMETHANE	2.0	50	SEC-BUTYLBENZENE	<0.5	5.0
TRANS-1,3-DICHLOROPROPENE	<0.5	5.0	P-ISOPROPYLTOLUENE	<0.5	5.0
CIS-1,3-DICHLOROPROPENE	<0.5	5.0	N-BUTYLBENZENE	<0.5	5.0
1,1,2-TRICHLOROETHANE	<0.5	5.0	METHYL TERT. BUTYL ETHER	<0.5	50
TETRACHLOROETHENE	<0.5	5.0			
1,3-DICHLOROPROPANE	<0.5	5.0			
CHLORODIBROMOMETHANE	1.0	50			
CHLOROBENZENE	<0.5	5.0			
1,1,1,2-TETRACHLOROETHANE	<0.5	5.0			
BROMOFORM	<0.5	50			
BROMOBENZENE	<0.5	5.0			
1,1,2,2-TETRACHLOROETHANE	<0.5	5.0			

S 0043

Result(s) reported meet(s) NEW YORK STATE/USEPA limits for Potable Water

Joann M. Slavin
 Laboratory Director



575 Broad Hollow Road, Melville, NY 11747-5076
 (631)694-3040 . FAX:(631)420-8436 NYSDOH ID# 10478

BROOKHAVEN NATIONAL LAB.-BNLM
70 BELL AVE.
UPTON, NY 11973

Lab No. : 20000706-158

Sample Information...
 Type : Potable Water
 ROUTINE
 Origin: RAW WELL

Attn To : S. SCARPITTA/TONY ROSS
 Federal ID : 5111891
 Collected : 06-JUL-2000 07:50
 Received : 06-JUL-2000 15:30
 Collected By : RL99
 Project No : 4469
 Copies To : SCHD

Location: WELL 4 (RAW)

VOLATILE ORGANICS (METHOD 502.2) - ug/L

Run Number : 2650
 Date Analyzed : 18-JUL-2000

Parameter(s)	Results	Limit	Parameter(s)	Results	Limit
DICHLORODIFLUOROMETHANE	<0.5	5.0	1,2,3-TRICHLOROPROPANE	<0.5	5.0
CHLOROMETHANE	<0.5	5.0	2-CHLOROTOLUENE	<0.5	5.0
VINYL CHLORIDE	<0.5	2.0	4-CHLOROTOLUENE	<0.5	5.0
BROMOMETHANE	<0.5	5.0	M-DICHLOROBENZENE	<0.5	5.0
CHLOROETHANE	<0.5	5.0	P-DICHLOROBENZENE	<0.5	5.0
FLUOROTRICHLOROMETHANE	<0.5	5.0	O-DICHLOROBENZENE	<0.5	5.0
1,1-DICHLOROETHENE	<0.5	5.0	1,2,4-TRICHLOROBENZENE	<0.5	5.0
METHYLENE CHLORIDE	<0.5	5.0	HEXACHLOROBUTADIENE	<0.5	5.0
TRANS-1,2-DICHLOROETHENE	<0.5	5.0	1,2,3-TRICHLOROBENZENE	<0.5	5.0
1,1-DICHLOROETHANE	<0.5	5.0	BENZENE	<0.5	5.0
CIS-1,2-DICHLOROETHENE	<0.5	5.0	TOLUENE	<0.5	5.0
2,2-DICHLOROPROPANE	<0.5	5.0	ETHYLBENZENE	<0.5	5.0
BROMOCHLOROMETHANE	<0.5	5.0	1,3-XYLENE	<0.5	5.0
CHLOROFORM	0.9	50	1,4-XYLENE	<0.5	5.0
1,1,1-TRICHLOROETHANE	<0.5	5.0	1,2-XYLENE	<0.5	5.0
CARBON TETRACHLORIDE	<0.5	5.0	STYRENE	<0.5	5.0
1,1-DICHLOROPROPENE	<0.5	5.0	ISOPROPYLBENZENE(CUMENE)	<0.5	5.0
1,2-DICHLOROETHANE	<0.5	5.0	N-PROPYLBENZENE	<0.5	5.0
TRICHLOROETHENE	<0.5	5.0	1,3,5-TRIMETHYLBENZENE	<0.5	5.0
1,2-DICHLOROPROPANE	<0.5	5.0	TERT-BUTYLBENZENE	<0.5	5.0
DIBROMOMETHANE	<0.5	5.0	1,2,4-TRIMETHYLBENZENE	<0.5	5.0
BROMODICHLOROMETHANE	<0.5	50	SEC-BUTYLBENZENE	<0.5	5.0
TRANS-1,3-DICHLOROPROPENE	<0.5	5.0	P-ISOPROPYLTOLUENE	<0.5	5.0
CIS-1,3-DICHLOROPROPENE	<0.5	5.0	N-BUTYLBENZENE	<0.5	5.0
1,1,2-TRICHLOROETHANE	<0.5	5.0	METHYL TERT. BUTYL ETHER	<0.5	50
TETRACHLOROETHENE	<0.5	5.0			
1,3-DICHLOROPROPANE	<0.5	5.0			
CHLORODIBROMOMETHANE	<0.5	50			
CHLOROBENZENE	<0.5	5.0			
1,1,1,2-TETRACHLOROETHANE	<0.5	5.0			
BROMOFORM	<0.5	50			
BROMOBENZENE	<0.5	5.0			
1,1,2,2-TETRACHLOROETHANE	<0.5	5.0			

Result(s) reported meet(s) NEW YORK STATE/USEPA limits for Potable Water

S 0044

Joann M. Slavin

575 Broad Hollow Road, Melville, NY 11747-5076
(631)694-3040 . FAX:(631)420-8436 NYSDOH ID# 10478

BROOKHAVEN NATIONAL LAB.-BNLM
70 BELL AVE.
UPTON, NY 11973

Lab No. : 20000706-159

Sample Information...

Type : Potable Water
ROUTINE
Origin: RAW WELL

Attn To : S. SCARPITTA/TONY ROSS
Federal ID : 5111891
Collected : 06-JUL-2000 07:40
Received : 06-JUL-2000 15:30
Collected By : RL99
Project No : 4469
Copies To : SCHED

Location: WELL 6 (RAW)

VOLATILE ORGANICS (METHOD 502.2) - ug/L

Run Number : 2651

Date Analyzed : 18-JUL-2000

Parameter(s)	Results	Limit	Parameter(s)	Results	Limit
DICHLORODIFLUOROMETHANE	<0.5	5.0	1,2,3-TRICHLOROPROPANE	<0.5	5.0
CHLOROMETHANE	<0.5	5.0	2-CHLOROTOLUENE	<0.5	5.0
VINYL CHLORIDE	<0.5	2.0	4-CHLOROTOLUENE	<0.5	5.0
BROMOMETHANE	<0.5	5.0	M-DICHLOROBENZENE	<0.5	5.0
CHLOROETHANE	<0.5	5.0	P-DICHLOROBENZENE	<0.5	5.0
FLUOROTRICHLOROMETHANE	<0.5	5.0	O-DICHLOROBENZENE	<0.5	5.0
1,1-DICHLOROETHENE	<0.5	5.0	1,2,4-TRICHLOROBENZENE	<0.5	5.0
METHYLENE CHLORIDE	<0.5	5.0	HEXACHLOROBUTADIENE	<0.5	5.0
TRANS-1,2-DICHLOROETHENE	<0.5	5.0	1,2,3-TRICHLOROBENZENE	<0.5	5.0
1,1-DICHLOROETHANE	<0.5	5.0	BENZENE	<0.5	5.0
CIS-1,2-DICHLOROETHENE	<0.5	5.0	TOLUENE	<0.5	5.0
2,2-DICHLOROPROPANE	<0.5	5.0	ETHYLBENZENE	<0.5	5.0
BROMOCHLOROMETHANE	<0.5	5.0	1,3-XYLENE	<0.5	5.0
CHLOROFORM	<0.5	50	1,4-XYLENE	<0.5	5.0
1,1,1-TRICHLOROETHANE	<0.5	5.0	1,2-XYLENE	<0.5	5.0
CARBON TETRACHLORIDE	<0.5	5.0	STYRENE	<0.5	5.0
1,1-DICHLOROPROPENE	<0.5	5.0	ISOPROPYLBENZENE(CUMENE)	<0.5	5.0
1,2-DICHLOROETHANE	<0.5	5.0	N-PROPYLBENZENE	<0.5	5.0
TRICHLOROETHENE	<0.5	5.0	1,3,5-TRIMETHYLBENZENE	<0.5	5.0
1,2-DICHLOROPROPANE	<0.5	5.0	TERT-BUTYLBENZENE	<0.5	5.0
DIBROMOMETHANE	<0.5	5.0	1,2,4-TRIMETHYLBENZENE	<0.5	5.0
BROMODICHLOROMETHANE	<0.5	50	SEC-BUTYLBENZENE	<0.5	5.0
TRANS-1,3-DICHLOROPROPENE	<0.5	5.0	P-ISOPROPYLTOLUENE	<0.5	5.0
CIS-1,3-DICHLOROPROPENE	<0.5	5.0	N-BUTYLBENZENE	<0.5	5.0
1,1,2-TRICHLOROETHANE	<0.5	5.0	METHYL TERT. BUTYL ETHER	<0.5	5.0
TETRACHLOROETHENE	<0.5	5.0			
1,3-DICHLOROPROPANE	<0.5	5.0			
CHLORODIBROMOMETHANE	<0.5	50			
CHLOROBENZENE	<0.5	5.0			
1,1,1,2-TETRACHLOROETHANE	<0.5	5.0			
BROMOFORM	<0.5	50			
BROMOBENZENE	<0.5	5.0			
1,1,2,2-TETRACHLOROETHANE	<0.5	5.0			

Result(s) reported meet(s) NEW YORK STATE/USEPA limits for Potable Water

S 0048

Date Issued : 08/16/2000

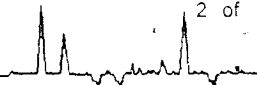
ORIGINAL

Report for client information only

Joann M. Slavin

Laboratory Director

575 Broad Hollow Road, Melville, NY 11747-5076
 (631)694-3040 . FAX:(631)420-8436 NYSDOH ID# 10478



BROOKHAVEN NATIONAL LAB.-BNLM
 70 BELL AVE.
 UPTON, NY 11973

Lab No. : 20000706-160

Sample Information...

Type : Potable Water
 ROUTINE
 Origin: RAW WELL

Attn To : S. SCARPITTA/TONY ROSS
 Federal ID : 5111891
 Collected : 06-JUL-2000 07:30
 Received : 06-JUL-2000 15:30
 Collected By : RL99
 Project No : 4469
 Copies To : SCHD

Location: WELL 7(RAW)

VOLATILE ORGANICS (METHOD 502.2) - ug/L

Run Number : 2652
 Date Analyzed : 18-JUL-2000

Parameter(s)	Results	Limit	Parameter(s)	Results	Limit
DICHLORODIFLUOROMETHANE	<0.5	5.0	1,2,3-TRICHLOROPROPANE	<0.5	5.0
CHLOROMETHANE	<0.5	5.0	2-CHLOROTOLUENE	<0.5	5.0
VINYL CHLORIDE	<0.5	2.0	4-CHLOROTOLUENE	<0.5	5.0
BROMOMETHANE	<0.5	5.0	M-DICHLOROBENZENE	<0.5	5.0
CHLOROETHANE	<0.5	5.0	P-DICHLOROBENZENE	<0.5	5.0
FLUOROTRICHLOROMETHANE	<0.5	5.0	O-DICHLOROBENZENE	<0.5	5.0
1,1-DICHLOROETHENE	<0.5	5.0	1,2,4-TRICHLOROBENZENE	<0.5	5.0
METHYLENE CHLORIDE	<0.5	5.0	HEXACHLOROBUTADIENE	<0.5	5.0
TRANS-1,2-DICHLOROETHENE	<0.5	5.0	1,2,3-TRICHLOROBENZENE	<0.5	5.0
1,1-DICHLOROETHANE	<0.5	5.0	BENZENE	<0.5	5.0
CIS-1,2-DICHLOROETHENE	<0.5	5.0	TOLUENE	<0.5	5.0
2,2-DICHLOROPROPANE	<0.5	5.0	ETHYLBENZENE	<0.5	5.0
BROMOCHLOROMETHANE	<0.5	5.0	1,3-XYLENE	<0.5	5.0
CHLOROFORM	2.0	50	1,4-XYLENE	<0.5	5.0
1,1,1-TRICHLOROETHANE	<0.5	5.0	1,2-XYLENE	<0.5	5.0
CARBON TETRACHLORIDE	<0.5	5.0	STYRENE	<0.5	5.0
1,1-DICHLOROPROPENE	<0.5	5.0	ISOPROPYLBENZENE(CUMENE)	<0.5	5.0
1,2-DICHLOROETHANE	<0.5	5.0	N-PROPYLBENZENE	<0.5	5.0
TRICHLOROETHENE	<0.5	5.0	1,3,5-TRIMETHYLBENZENE	<0.5	5.0
1,2-DICHLOROPROPANE	<0.5	5.0	TERT-BUTYLBENZENE	<0.5	5.0
DIBROMOMETHANE	<0.5	5.0	1,2,4-TRIMETHYLBENZENE	<0.5	5.0
BROMODICHLOROMETHANE	<0.5	50	SEC-BUTYLBENZENE	<0.5	5.0
TRANS-1,3-DICHLOROPROPENE	<0.5	5.0	P-ISOPROPYLTOLUENE	<0.5	5.0
CIS-1,3-DICHLOROPROPENE	<0.5	5.0	N-BUTYLBENZENE	<0.5	5.0
1,1,2-TRICHLOROETHANE	<0.5	5.0	METHYL TERT. BUTYL ETHER	<0.5	50
TETRACHLOROETHENE	<0.5	5.0			
1,3-DICHLOROPROPANE	<0.5	5.0			
CHLORODIBROMOMETHANE	<0.5	50			
CHLOROBENZENE	<0.5	5.0			
1,1,1,2-TETRACHLOROETHANE	<0.5	5.0			
BROMOFORM	<0.5	50			
BROMOBENZENE	<0.5	5.0			
1,1,2,2-TETRACHLOROETHANE	<0.5	5.0			

Result(s) reported meet(s) NEW YORK STATE/USEPA limits for Potable Water

S 0052

Joann M. Slavin

575 Broad Hollow Road, Melville, NY 11747-5076
(631)694-3040, FAX:(631)420-8436 NYSDOH ID# 10478

BROOKHAVEN NATIONAL LAB.-BNLM
70 BELL AVE.
UPTON, NY 11973

Lab No. : 20000706-161

Sample Information...

Type : Potable Water
ROUTINE
Origin: RAW WELL

Attn To : S. SCARPITTA/TONY ROSS

Federal ID : 5111891

Collected : 06-JUL-2000 07:15

Received : 06-JUL-2000 15:30

Location: WELL 10 (RAW)

Collected By : RL99

Project No : 4469

Copies To : SCHD

VOLATILE ORGANICS (METHOD 502.2) - ug/L

Run Number : 2653

Date Analyzed : 18-JUL-2000

Parameter(s)	Results	Limit	Parameter(s)	Results	Limit
DICHLORODIFLUOROMETHANE	<0.5	5.0	1,2,3-TRICHLOROPROPANE	<0.5	5.0
CHLOROMETHANE	<0.5	5.0	2-CHLOROTOLUENE	<0.5	5.0
VINYL CHLORIDE	<0.5	2.0	4-CHLOROTOLUENE	<0.5	5.0
BROMOMETHANE	<0.5	5.0	M-DICHLOROBENZENE	<0.5	5.0
CHLOROETHANE	<0.5	5.0	P-DICHLOROBENZENE	<0.5	5.0
FLUOROTRICHLOROMETHANE	<0.5	5.0	O-DICHLOROBENZENE	<0.5	5.0
1,1-DICHLOROETHENE	<0.5	5.0	1,2,4-TRICHLOROBENZENE	<0.5	5.0
METHYLENE CHLORIDE	<0.5	5.0	HEXACHLOROBUTADIENE	<0.5	5.0
TRANS-1,2-DICHLOROETHENE	<0.5	5.0	1,2,3-TRICHLOROBENZENE	<0.5	5.0
1,1-DICHLOROETHANE	<0.5	5.0	BENZENE	<0.5	5.0
CIS-1,2-DICHLOROETHENE	<0.5	5.0	TOLUENE	<0.5	5.0
2,2-DICHLOROPROPANE	<0.5	5.0	ETHYLBENZENE	<0.5	5.0
BROMOCHLOROMETHANE	<0.5	5.0	1,3-XYLENE	<0.5	5.0
CHLOROFORM	1.2	50	1,4-XYLENE	<0.5	5.0
1,1,1-TRICHLOROETHANE	0.5	5.0	1,2-XYLENE	<0.5	5.0
CARBON TETRACHLORIDE	<0.5	5.0	STYRENE	<0.5	5.0
1,1-DICHLOROPROPENE	<0.5	5.0	ISOPROPYLBENZENE(CUMENE)	<0.5	5.0
1,2-DICHLOROETHANE	<0.5	5.0	N-PROPYLBENZENE	<0.5	5.0
TRICHLOROETHENE	<0.5	5.0	1,3,5-TRIMETHYLBENZENE	<0.5	5.0
1,2-DICHLOROPROPANE	<0.5	5.0	TERT-BUTYLBENZENE	<0.5	5.0
DIBROMOMETHANE	<0.5	5.0	1,2,4-TRIMETHYLBENZENE	<0.5	5.0
BROMODICHLOROMETHANE	1.1	50	SEC-BUTYLBENZENE	<0.5	5.0
TRANS-1,3-DICHLOROPROPENE	<0.5	5.0	P-ISOPROPYLTOLUENE	<0.5	5.0
CIS-1,3-DICHLOROPROPENE	<0.5	5.0	N-BUTYLBENZENE	<0.5	5.0
1,1,2-TRICHLOROETHANE	<0.5	5.0	METHYL TERT. BUTYL ETHER	<0.5	50
TETRACHLOROETHENE	<0.5	5.0			
1,3-DICHLOROPROPANE	<0.5	5.0			
CHLORODIBROMOMETHANE	1.0	50			
CHLOROBENZENE	<0.5	5.0			
1,1,1,2-TETRACHLOROETHANE	<0.5	5.0			
BROMOFORM	<0.5	50			
BROMOBENZENE	<0.5	5.0			
1,1,2,2-TETRACHLOROETHANE	<0.5	5.0			

Result(s) reported meet(s) NEW YORK STATE/USEPA limits for Potable Water

S 0056



575 Broad Hollow Road, Melville, NY 11747-5076
(631)694-3040 . FAX:(631)420-8436 NYSDOH ID# 10478

BROOKHAVEN NATIONAL LAB.-BNLM
70 BELL AVE.
UPTON, NY 11973

Lab No. : 20000706-162

Sample Information...
Type : Potable Water
ROUTINE
Origin: TREATED WELL

Attn To : S. SCARPITTA/TONY ROSS
Federal ID : 5111891
Collected : 06-JUL-2000 07:15
Received : 06-JUL-2000 15:30
Collected By : RL99
Project No : 4469
Copies To : SCHD

Location: WELL 10 (TREATED)

VOLATILE ORGANICS (METHOD 502.2) - ug/L

Run Number : 2654
Date Analyzed : 18-JUL-2000

Parameter(s)	Results	Limit	Parameter(s)	Results	Limit
DICHLORODIFLUOROMETHANE	<0.5	5.0	1,2,3-TRICHLOROPROPANE	<0.5	5.0
CHLOROMETHANE	<0.5	5.0	2-CHLOROTOLUENE	<0.5	5.0
VINYL CHLORIDE	<0.5	2.0	4-CHLOROTOLUENE	<0.5	5.0
BROMOMETHANE	<0.5	5.0	M-DICHLOROBENZENE	<0.5	5.0
CHLOROETHANE	<0.5	5.0	P-DICHLOROBENZENE	<0.5	5.0
FLUOROTRICHLOROMETHANE	<0.5	5.0	O-DICHLOROBENZENE	<0.5	5.0
1,1-DICHLOROETHENE	<0.5	5.0	1,2,4-TRICHLOROBENZENE	<0.5	5.0
METHYLENE CHLORIDE	<0.5	5.0	HEXACHLOROBUTADIENE	<0.5	5.0
TRANS-1,2-DICHLOROETHENE	<0.5	5.0	1,2,3-TRICHLOROBENZENE	<0.5	5.0
1,1-DICHLOROETHANE	<0.5	5.0	BENZENE	<0.5	5.0
CIS-1,2-DICHLOROETHENE	<0.5	5.0	TOLUENE	<0.5	5.0
2,2-DICHLOROPROPANE	<0.5	5.0	ETHYLBENZENE	<0.5	5.0
BROMOCHLOROMETHANE	<0.5	5.0	1,3-XYLENE	<0.5	5.0
CHLOROFORM	0.6	50	1,4-XYLENE	<0.5	5.0
1,1,1-TRICHLOROETHANE	0.5	5.0	1,2-XYLENE	<0.5	5.0
CARBON TETRACHLORIDE	<0.5	5.0	STYRENE	<0.5	5.0
1,1-DICHLOROPROPENE	<0.5	5.0	ISOPROPYLBENZENE(CUMENE)	<0.5	5.0
1,2-DICHLOROETHANE	<0.5	5.0	N-PROPYLBENZENE	<0.5	5.0
TRICHLOROETHENE	<0.5	5.0	1,3,5-TRIMETHYLBENZENE	<0.5	5.0
1,2-DICHLOROPROPANE	<0.5	5.0	TERT-BUTYLBENZENE	<0.5	5.0
DIBROMOMETHANE	<0.5	5.0	1,2,4-TRIMETHYLBENZENE	<0.5	5.0
BROMODICHLOROMETHANE	<0.5	50	SEC-BUTYLBENZENE	<0.5	5.0
TRANS-1,3-DICHLOROPROPENE	<0.5	5.0	P-ISOPROPYLTOLUENE	<0.5	5.0
CIS-1,3-DICHLOROPROPENE	<0.5	5.0	N-BUTYLBENZENE	<0.5	5.0
1,1,2-TRICHLOROETHANE	<0.5	5.0	METHYL TERT. BUTYL ETHER	<0.5	5.0
TETRACHLOROETHENE	<0.5	5.0			
1,3-DICHLOROPROPANE	<0.5	5.0			
CHLORODIBROMOMETHANE	<0.5	50			
CHLOROBENZENE	<0.5	5.0			
1,1,1,2-TETRACHLOROETHANE	<0.5	5.0			
BROMOFORM	<0.5	50			
BROMOBENZENE	<0.5	5.0			
1,1,2,2-TETRACHLOROETHANE	<0.5	5.0			

S 0060

Result(s) reported meet(s) NEW YORK STATE/USEPA limits for Potable Water

Joann M. Slavin
Laboratory Director

575 Broad Hollow Road, Melville, NY 11747-5076
 (631)694-3040 . FAX:(631)420-8436 NYSDOH ID# 10478



BROOKHAVEN NATIONAL LAB.-BNLM
70 BELL AVE.
UPTON, NY 11973

Lab No. : 20000706-163

Sample Information...
 Type : Potable Water
 ROUTINE
 Origin: RAW WELL

Attn To : S. SCARPITTA/TONY ROSS
 Federal ID : 5111891
 Collected : 06-JUL-2000 07:00
 Received : 06-JUL-2000 15:30
 Collected By : RL99
 Project No : 4469
 Copies To : SCHED

Location: WELL 11 (RAW)

VOLATILE ORGANICS (METHOD 502.2) - ug/L

Run Number : 2655
 Date Analyzed : 18-JUL-2000

Parameter(s)	Results	Limit	Parameter(s)	Results	Limit
DICHLORODIFLUOROMETHANE	<0.5	5.0	1,2,3-TRICHLOROPROPANE	<0.5	5.0
CHLOROMETHANE	<0.5	5.0	2-CHLOROTOLUENE	<0.5	5.0
VINYL CHLORIDE	<0.5	2.0	4-CHLOROTOLUENE	<0.5	5.0
BROMOMETHANE	<0.5	5.0	M-DICHLOROBENZENE	<0.5	5.0
CHLOROETHANE	<0.5	5.0	P-DICHLOROBENZENE	<0.5	5.0
FLUOROTRICHLOROMETHANE	<0.5	5.0	O-DICHLOROBENZENE	<0.5	5.0
1,1-DICHLOROETHENE	<0.5	5.0	1,2,4-TRICHLOROBENZENE	<0.5	5.0
METHYLENE CHLORIDE	<0.5	5.0	HEXACHLOROBUTADIENE	<0.5	5.0
TRANS-1,2-DICHLOROETHENE	<0.5	5.0	1,2,3-TRICHLOROBENZENE	<0.5	5.0
1,1-DICHLOROETHANE	<0.5	5.0	BENZENE	<0.5	5.0
CIS-1,2-DICHLOROETHENE	<0.5	5.0	TOLUENE	<0.5	5.0
2,2-DICHLOROPROPANE	<0.5	5.0	ETHYLBENZENE	<0.5	5.0
BROMOCHLOROMETHANE	<0.5	5.0	1,3-XYLENE	<0.5	5.0
CHLOROFORM	<0.5	50	1,4-XYLENE	<0.5	5.0
1,1,1-TRICHLOROETHANE	0.5	5.0	1,2-XYLENE	<0.5	5.0
CARBON TETRACHLORIDE	<0.5	5.0	STYRENE	<0.5	5.0
1,1-DICHLOROPROPENE	<0.5	5.0	ISOPROPYLBENZENE(CUMENE)	<0.5	5.0
1,2-DICHLOROETHANE	<0.5	5.0	N-PROPYLBENZENE	<0.5	5.0
TRICHLOROETHENE	<0.5	5.0	1,3,5-TRIMETHYLBENZENE	<0.5	5.0
1,2-DICHLOROPROPANE	<0.5	5.0	TERT-BUTYLBENZENE	<0.5	5.0
DIBROMOMETHANE	<0.5	5.0	1,2,4-TRIMETHYLBENZENE	<0.5	5.0
BROMODICHLOROMETHANE	<0.5	50	SEC-BUTYLBENZENE	<0.5	5.0
TRANS-1,3-DICHLOROPROPENE	<0.5	5.0	P-ISOPROPYLTOLUENE	<0.5	5.0
CIS-1,3-DICHLOROPROPENE	<0.5	5.0	N-BUTYLBENZENE	<0.5	5.0
1,1,2-TRICHLOROETHANE	<0.5	5.0	METHYL TERT. BUTYL ETHER	<0.5	50
TETRACHLOROETHENE	<0.5	5.0			
1,3-DICHLOROPROPANE	<0.5	5.0			
CHLORODIBROMOMETHANE	<0.5	50			
CHLOROBENZENE	<0.5	5.0			
1,1,1,2-TETRACHLOROETHANE	<0.5	5.0			
BROMOFORM	<0.5	50			
BROMOBENZENE	<0.5	5.0			
1,1,2,2-TETRACHLOROETHANE	<0.5	5.0			

Result(s) reported meet(s) NEW YORK STATE/USEPA limits for Potable Water

S 0061

Date Issued : 08/16/2000

ORIGINAL

Report for client information only

Joann M. Slavin

Laboratory Director



575 Broad Hollow Road, Melville, NY 11747-5076
(631)694-3040 FAX:(631)420-8436 NYSDOH ID# 10478

BROOKHAVEN NATIONAL LAB.-BNLM
70 BELL AVE.
UPTON, NY 11973

Lab No. : 20000706-164

Sample Information...
Type : Potable Water
ROUTINE
Origin: TREATED WELL

Attn To : S. SCARPITTA/TONY ROSS
Federal ID : 5111891
Collected : 06-JUL-2000 07:00
Received : 06-JUL-2000 15:30
Collected By : RL99
Project No : 4469
Copies To : SCHD

Location: WELL 11 (TREATED)

VOLATILE ORGANICS (METHOD 502.2) - ug/L

Run Number : 2656
Date Analyzed : 18-JUL-2000

Parameter(s)	Results	Limit	Parameter(s)	Results	Limit
DICHLORODIFLUOROMETHANE	<0.5	5.0	1,2,3-TRICHLOROPROPANE	<0.5	5.0
CHLOROMETHANE	<0.5	5.0	2-CHLOROTOLUENE	<0.5	5.0
VINYL CHLORIDE	<0.5	2.0	4-CHLOROTOLUENE	<0.5	5.0
BROMOMETHANE	<0.5	5.0	M-DICHLOROBENZENE	<0.5	5.0
CHLOROETHANE	<0.5	5.0	P-DICHLOROBENZENE	<0.5	5.0
FLUOROTRICHLOROMETHANE	<0.5	5.0	O-DICHLOROBENZENE	<0.5	5.0
1,1-DICHLOROETHENE	<0.5	5.0	1,2,4-TRICHLOROBENZENE	<0.5	5.0
METHYLENE CHLORIDE	<0.5	5.0	HEXACHLOROBUTADIENE	<0.5	5.0
TRANS-1,2-DICHLOROETHENE	<0.5	5.0	1,2,3-TRICHLOROBENZENE	<0.5	5.0
1,1-DICHLOROETHANE	<0.5	5.0	BENZENE	<0.5	5.0
CIS-1,2-DICHLOROETHENE	<0.5	5.0	TOLUENE	<0.5	5.0
2,2-DICHLOROPROPANE	<0.5	5.0	ETHYLBENZENE	<0.5	5.0
BROMOCHLOROMETHANE	<0.5	5.0	1,3-XYLENE	<0.5	5.0
CHLOROFORM	<0.5	50	1,4-XYLENE	<0.5	5.0
1,1,1-TRICHLOROETHANE	<0.5	5.0	1,2-XYLENE	<0.5	5.0
CARBON TETRACHLORIDE	<0.5	5.0	STYRENE	<0.5	5.0
1,1-DICHLOROPROPENE	<0.5	5.0	ISOPROPYLBENZENE(CUMENE)	<0.5	5.0
1,2-DICHLOROETHANE	<0.5	5.0	N-PROPYLBENZENE	<0.5	5.0
TRICHLOROETHENE	<0.5	5.0	1,3,5-TRIMETHYLBENZENE	<0.5	5.0
1,2-DICHLOROPROPANE	<0.5	5.0	TERT-BUTYLBENZENE	<0.5	5.0
DIBROMOMETHANE	<0.5	5.0	1,2,4-TRIMETHYLBENZENE	<0.5	5.0
BROMODICHLOROMETHANE	<0.5	50	SEC-BUTYLBENZENE	<0.5	5.0
TRANS-1,3-DICHLOROPROPENE	<0.5	5.0	P-ISOPROPYLTOLUENE	<0.5	5.0
CIS-1,3-DICHLOROPROPENE	<0.5	5.0	N-BUTYLBENZENE	<0.5	5.0
1,1,2-TRICHLOROETHANE	<0.5	5.0	METHYL TERT. BUTYL ETHER	<0.5	50
TETRACHLOROETHENE	<0.5	5.0			
1,3-DICHLOROPROPANE	<0.5	5.0			
CHLORODIBROMOMETHANE	<0.5	50			
CHLOROBENZENE	<0.5	5.0			
1,1,1,2-TETRACHLOROETHANE	<0.5	5.0			
BROMOFORM	<0.5	50			
BROMOBENZENE	<0.5	5.0			
1,1,2,2-TETRACHLOROETHANE	<0.5	5.0			

S 0065

Result(s) reported meet(s) NEW YORK STATE/USEPA limits for Potable Water

Joann M. Slavin
Laboratory Director

575 Broad Hollow Road, Melville, NY 11747-5076
(631)694-3040 . FAX:(631)420-8436 NYSDOH ID# 10478



BROOKHAVEN NATIONAL LAB.-BNLM
70 BELL AVE.
UPTON, NY 11973

Lab No. : 20000706-165

Sample Information...

Type : Potable Water

ROUTINE

Origin: RAW WELL

Attn To : S. SCARPITTA/TONY ROSS

Federal ID : 5111891

Collected : 06-JUL-2000 06:20

Received : 06-JUL-2000 15:30

Location: WELL 12 (RAW)

Collected By : RL99

Project No : 4469

Copies To : SCHD

VOLATILE ORGANICS (METHOD 502.2) - ug/L

Run Number : 2657

Date Analyzed : 18-JUL-2000

Parameter(s)	Results	Limit	Parameter(s)	Results	Limit
DICHLORODIFLUOROMETHANE	<0.5	5.0	1,2,3-TRICHLOROPROPANE	<0.5	5.0
CHLOROMETHANE	<0.5	5.0	2-CHLOROTOLUENE	<0.5	5.0
VINYL CHLORIDE	<0.5	2.0	4-CHLOROTOLUENE	<0.5	5.0
BROMOMETHANE	<0.5	5.0	M-DICHLOROBENZENE	<0.5	5.0
CHLOROETHANE	<0.5	5.0	P-DICHLOROBENZENE	<0.5	5.0
FLUOROTRICHLOROMETHANE	<0.5	5.0	O-DICHLOROBENZENE	<0.5	5.0
1,1-DICHLOROETHENE	<0.5	5.0	1,2,4-TRICHLOROBENZENE	<0.5	5.0
METHYLENE CHLORIDE	<0.5	5.0	HEXACHLOROBUTADIENE	<0.5	5.0
TRANS-1,2-DICHLOROETHENE	<0.5	5.0	1,2,3-TRICHLOROBENZENE	<0.5	5.0
1,1-DICHLOROETHANE	<0.5	5.0	BENZENE	<0.5	5.0
CIS-1,2-DICHLOROETHENE	<0.5	5.0	TOLUENE	<0.5	5.0
2,2-DICHLOROPROPANE	<0.5	5.0	ETHYLBENZENE	<0.5	5.0
BROMOCHLOROMETHANE	<0.5	5.0	1,3-XYLENE	<0.5	5.0
CHLOROFORM	0.7	50	1,4-XYLENE	<0.5	5.0
1,1,1-TRICHLOROETHANE	<0.5	5.0	1,2-XYLENE	<0.5	5.0
CARBON TETRACHLORIDE	<0.5	5.0	STYRENE	<0.5	5.0
1,1-DICHLOROPROPENE	<0.5	5.0	ISOPROPYLBENZENE(CUMENE)	<0.5	5.0
1,2-DICHLOROETHANE	<0.5	5.0	N-PROPYLBENZENE	<0.5	5.0
TRICHLOROETHENE	<0.5	5.0	1,3,5-TRIMETHYLBENZENE	<0.5	5.0
1,2-DICHLOROPROPANE	<0.5	5.0	TERT-BUTYLBENZENE	<0.5	5.0
DIBROMOMETHANE	<0.5	5.0	1,2,4-TRIMETHYLBENZENE	<0.5	5.0
BROMODICHLOROMETHANE	<0.5	50	SEC-BUTYLBENZENE	<0.5	5.0
TRANS-1,3-DICHLOROPROPENE	<0.5	5.0	P-ISOPROPYLTOLUENE	<0.5	5.0
CIS-1,3-DICHLOROPROPENE	<0.5	5.0	N-BUTYLBENZENE	<0.5	5.0
1,1,2-TRICHLOROETHANE	<0.5	5.0	METHYL TERT. BUTYL ETHER	<0.5	50
TETRACHLOROETHENE	<0.5	5.0			
1,3-DICHLOROPROPANE	<0.5	5.0			
CHLORODIBROMOMETHANE	<0.5	50			
CHLOROBENZENE	<0.5	5.0			
1,1,1,2-TETRACHLOROETHANE	<0.5	5.0			
BROMOFORM	<0.5	50			
BROMOBENZENE	<0.5	5.0			
1,1,2,2-TETRACHLOROETHANE	<0.5	5.0			

S 0066

Result(s) reported meet(s) NEW YORK STATE/USEPA limits for Potable Water

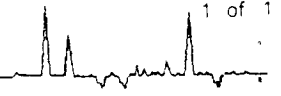
Date Issued : 08/16/2000

ORIGINAL

Report for client information only

Joann M. Slavin

Laboratory Director



575 Broad Hollow Road, Melville, NY 11747-5076
 (631)694-3040 . FAX:(631)420-8436 NYSDOH ID# 10478

BROOKHAVEN NATIONAL LAB.-BNLM
70 BELL AVE.
UPTON, NY 11973

Lab No. : 20000706-166

Sample Information...
 Type : Potable Water
 ROUTINE
 Origin: TREATED WELL

Attn To : S. SCARPITTA/TONY ROSS
 Federal ID : 5111891
 Collected : 06-JUL-2000 06:20
 Received : 06-JUL-2000 15:30
 Collected By : RL99
 Project No : 4469
 Copies To : SCHD

Location: WELL 12 (TREATED)

VOLATILE ORGANICS (METHOD 502.2) - ug/L

Run Number : 2658
 Date Analyzed : 18-JUL-2000

Parameter(s)	Results	Limit	Parameter(s)	Results	Limit
DICHLORODIFLUOROMETHANE	<0.5	5.0	1,2,3-TRICHLOROPROPANE	<0.5	5.0
CHLOROMETHANE	<0.5	5.0	2-CHLOROTOLUENE	<0.5	5.0
VINYL CHLORIDE	<0.5	2.0	4-CHLOROTOLUENE	<0.5	5.0
BROMOMETHANE	<0.5	5.0	M-DICHLOROBENZENE	<0.5	5.0
CHLOROETHANE	<0.5	5.0	P-DICHLOROBENZENE	<0.5	5.0
FLUOROTRICHLOROMETHANE	<0.5	5.0	O-DICHLOROBENZENE	<0.5	5.0
1,1-DICHLOROETHENE	<0.5	5.0	1,2,4-TRICHLOROBENZENE	<0.5	5.0
METHYLENE CHLORIDE	<0.5	5.0	HEXACHLOROBUTADIENE	<0.5	5.0
TRANS-1,2-DICHLOROETHENE	<0.5	5.0	1,2,3-TRICHLOROBENZENE	<0.5	5.0
1,1-DICHLOROETHANE	<0.5	5.0	BENZENE	<0.5	5.0
CIS-1,2-DICHLOROETHENE	<0.5	5.0	TOLUENE	<0.5	5.0
2,2-DICHLOROPROPANE	<0.5	5.0	ETHYLBENZENE	<0.5	5.0
BROMOCHLOROMETHANE	<0.5	5.0	1,3-XYLENE	<0.5	5.0
CHLOROFORM	1.0	50	1,4-XYLENE	<0.5	5.0
1,1,1-TRICHLOROETHANE	<0.5	5.0	1,2-XYLENE	<0.5	5.0
CARBON TETRACHLORIDE	<0.5	5.0	STYRENE	<0.5	5.0
1,1-DICHLOROPROPENE	<0.5	5.0	ISOPROPYLBENZENE(CUMENE)	<0.5	5.0
1,2-DICHLOROETHANE	<0.5	5.0	N-PROPYLBENZENE	<0.5	5.0
TRICHLOROETHENE	<0.5	5.0	1,3,5-TRIMETHYLBENZENE	<0.5	5.0
1,2-DICHLOROPROPANE	<0.5	5.0	TERT-BUTYLBENZENE	<0.5	5.0
DIBROMOMETHANE	<0.5	5.0	1,2,4-TRIMETHYLBENZENE	<0.5	5.0
BROMODICHLOROMETHANE	<0.5	50	SEC-BUTYLBENZENE	<0.5	5.0
TRANS-1,3-DICHLOROPROPENE	<0.5	5.0	P-ISOPROPYLTOLUENE	<0.5	5.0
CIS-1,3-DICHLOROPROPENE	<0.5	5.0	N-BUTYLBENZENE	<0.5	5.0
1,1,2-TRICHLOROETHANE	<0.5	5.0	METHYL TERT. BUTYL ETHER	<0.5	50
TETRACHLOROETHENE	<0.5	5.0			
1,3-DICHLOROPROPANE	<0.5	5.0			
CHLORODIBROMOMETHANE	<0.5	50			
CHLOROBENZENE	<0.5	5.0			
1,1,1,2-TETRACHLOROETHANE	<0.5	5.0			
BROMOFORM	<0.5	50			
BROMOBENZENE	<0.5	5.0			
1,1,1,2,2-TETRACHLOROETHANE	<0.5	5.0			

S 0070

Result(s) reported meet(s) NEW YORK STATE/USEPA limits for Potable Water

Joann M. Slavin
 Laboratory Director

ATTACHMENT VI

**Brookhaven National Laboratory
Potable Water Supply**

**2000 Annual Synthetic Organic Chemical and Pesticides Analytical Results for
the BNL Potable Water Distribution System and Potable Water Wells**

DATE ISSUED: 07/19/2000

CERTIFICATE OF ANALYSIS

PAGE 1 OF 1

NY DOH # 11216 CT # PH-0201
PA DEP # 08380 ICR PA017

Client: H2M Labs Inc.
Environmental & Ind. Analytical Lab
575 Broad Hollow Road
Melville NY 11747-5076

Sample ID #: 2000-07-07-163
Sample Date: 07/06/2000
Sample Time: 0:00
Sampled by:
Received by: DLM
Date & Time Recd: 07/07/2000 15:00

ATT: Stu Murrell

Project Description: 0706-158
Sample Location: Well 4
Sample Matrix: DRINKING WATER

Parameter	Results	Detection Limit (DL)		Method	Extracted	Analyzed	Analyst
		Max. Cont. Level (MCL)					
EPA 548.1 - Endothall Endothall	ND<5.0 ug/L	100.0 ug/L	NCL	EPA 548.1	07/11/2000	07/13/2000	

Reviewed by: 
Irene Chu
Laboratory Director

Q* Analysis performed by NYS DOH# 11072, PA DEP# 68-376



PESTICIDE ORGANICS ANALYSIS DATA SHEET

Lab Name: H2M LABS, INC.

Contract:

WELL4

Lab Code:

Case No.:

SAS No.:

SDG No.: BNLM097

Matrix: (soil/water) WATER

Lab Sample ID: 20000706-158

Sample wt/vol: 35 (g/mL) ML

Lab File ID: BE01372

% Moisture: _____ decanted: (Y/N) ___

Date Received: 07/06/00

Extraction: (SepF/Cont/Sonc) SONC

Date Extracted: 07/10/00

Concentrated Extract Volume: 2000(uL)

Date Analyzed: 07/11/00

Injection Volume: 2.0(uL)

Dilution Factor: 1.0

GPC Cleanup: (Y/N) N

pH: ___

Sulfur Cleanup: (Y/N) N

CAS NO.	COMPOUND	CONCENTRATION UNITS: (ug/L or ug/Kg) UG/L	Q
106-93-4	1,2-DIBROMOETHANE (EDB)	0.020	U
96-12-8	1,2-DIBROMO-3-CHLOROPROPANE	0.020	U

FORM 1
SEMIVOLATILE ORGANICS ANALYSIS DATA SHEET

CLIENT SAMPLE NO.

WELL 4 (RAW)

Lab Name: H2M LABS, INC.

Contract:

Lab Code:

Case No.:

SAS No.:

SDG No.: BNLM097

Matrix: (soil/water) WATER

Lab Sample ID: 20000706-158

Sample wt/vol: 35.00 (g/mL) ML

Lab File ID: WB01264

% Moisture: _____ decanted: (Y/N) _____

Date Received: 7/6/00 _____

Extraction: (SepF/Cont/Sonc) MICROEXTRAC

Date Extracted: 07/07/00

Concentrated Extract Volume: 2000 (uL)

Date Analyzed: 07/12/00

Injection Volume: 1.0 (uL)

Dilution Factor: 1.0

GPC Cleanup: (Y/N) Y pH: _____

Sulfur Cleanup: (Y/N) N

CONCENTRATION UNITS:
(ug/L or ug/Kg) UG/L

Q

CAS NO.	COMPOUND	CONCENTRATION UNITS: (ug/L or ug/Kg) UG/L	Q
58-89-9	gamma-BHC (Lindane)	0.025	U
76-44-8	Heptachlor	0.025	U
309-00-2	Aldrin	0.025	U
1024-57-3	Heptachlor epoxide	0.025	U
60-57-1	Dieldrin	0.05	U
72-20-8	Endrin	0.05	U
72-43-5	Methoxychlor	0.25	U
57-74-9	Chlordane	0.5	U
8001-35-2	Toxaphene	2.5	U
TOTAL PCB'S		0.5	U

1B
SEMIVOLATILE ORGANICS ANALYSIS DATA SHEET

EPA SAMPLE NO.

WELL 4 RAW

Lab Name: H2M LABS INC. Contract: _____
 Lab Code: 10478 Case No.: _____ SAS No.: _____ SDG No.: BNLM097
 Matrix: (soil/water) WATER Lab Sample ID: 2000706-158
 Sample wt/vol: 1000 (g/ml) ML Lab File ID: C15748.D
 Level: (low/med) LOW Date Received: 07/06/00
 % Moisture: _____ decanted:(Y/N) N Date Extracted: 07/13/00
 Concentrated Extract Volume: 1000 (uL) Date Analyzed: 08/07/00
 Injection Volume: 2.0 (uL) Dilution Factor: 1.0
 GPC Cleanup: (Y/N) N pH: _____

CONCENTRATION UNITS:

CAS NO.	COMPOUND	(ug/L or ug/Kg)	UG/L	Q
77474	Hexachlorocyclopentadiene	0.90	U	
118741	Hexachlorobenzene	0.11	U	
103231	Di(2-Ethylhexyl)adipate	0.17	U	
117817	bis(2-Ethylhexyl)phthalate	81.29	U	
50328	Benzo[a]pyrene	0.12	U	
1918167	Propachlor	0.03	U	
122349	Simazine	0.11	U	
1912249	Atrazine	0.12	U	
21087649	Metribuzin	0.07	U	
15972608	Alachlor	0.14	U	
51218452	Metolachlor	0.07	U	
23184669	Butachlor	0.17	U	

8/8/00



ENVIRONMENTAL
 390 Pennsylvania Avenue
 S. Waverly, PA 18840
 Phone (570) 888-0169
 Fax (570) 888-0717

quality ■ accuracy ■ reliability

ISSUED: 07/19/2000

CERTIFICATE OF ANALYSIS

PAGE 1 OF 1

Client: H2M Labs Inc.
 Environmental & Ind. Analytical Lab
 575 Broad Hollow Road
 Melville NY 11747-5076

NY DOH # 11216 CT # PH-0201
 PA DEP # 08380 ICR PA017
 Sample ID #: 2000-07-07-164
 Sample Date: 07/06/2000
 Sample Time: 0:00
 Sampled by:
 Received by: DLM
 Date & Time Recd: 07/07/2000 15:00

ATT: Stu Murrell

Project Description: 0706-159
 Sample Location: Well 6
 Sample Matrix: DRINKING WATER

Parameter	Results	Detection Limit (DL)		Method	Extracted	Analyzed	Analyst
		Max. Cont. Level (MCL)					
EPA 548.1 - Endothall	ND<5.0 ug/L	100.0 ug/L	MCL	EPA 548.1	07/11/2000	07/13/2000	
Endothall							

Reviewed by:
 Irene Chu
 Laboratory Director

Q* Analysis performed by NYS DOH# 11072, PA DEP# 68-376



1B
SEMIVOLATILE ORGANICS ANALYSIS DATA SHEET

EPA SAMPLE NO.

WELL 6 RAW

Lab Name: H2M LABS INC. Contract: _____
 Lab Code: 10478 Case No.: _____ SAS No.: _____ SDG No.: BNLM097
 Matrix: (soil/water) WATER Lab Sample ID: 2000706-159
 Sample wt/vol: 1000 (g/ml) ML Lab File ID: C15750.D
 Level: (low/med) LOW Date Received: 07/06/00
 % Moisture: _____ decanted:(Y/N) N Date Extracted: 07/13/00
 Concentrated Extract Volume: 1000 (uL) Date Analyzed: 08/07/00
 Injection Volume: 2.0 (uL) Dilution Factor: 1.0
 GPC Cleanup: (Y/N) N pH: _____

CONCENTRATION UNITS:

CAS NO.	COMPOUND	(ug/L or ug/Kg)	UG/L	Q
77474	Hexachlorocyclopentadiene	0.90	U	
118741	Hexachlorobenzene	0.11	U	
103231	Di(2-Ethylhexyl)adipate	0.17	U	
117817	bis(2-Ethylhexyl)phthalate	0.24	U	
50328	Benzo[a]pyrene	0.12	U	
1918167	Propachlor	0.08	U	
122349	Simazine	0.11	U	
1912249	Atrazine	0.12	U	
21087649	Metribuzin	0.07	U	
15972608	Alachlor	0.14	U	
51218452	Metolachlor	0.07	U	
23184669	Butachlor	0.17	U	

8/11/00

S 0051

FORM 1
PESTICIDE ORGANICS ANALYSIS DATA SHEET

CLIENT SAMPLE NO.

WELL6

Lab Name: H2M LABS, INC.

Contract:

Lab Code:

Case No.:

SAS No.:

SDG No.: BNLM097

Matrix: (soil/water) WATER

Lab Sample ID: 20000706-159

Sample wt/vol: 35 (g/mL) ML

Lab File ID: BE01373

% Moisture: _____ decanted: (Y/N) ___

Date Received: 07/06/00

Extraction: (SepF/Cont/Sonc) SONC

Date Extracted: 07/10/00

Concentrated Extract Volume: 2000(uL)

Date Analyzed: 07/11/00

Injection Volume: 2.0(uL)

Dilution Factor: 1.0

GPC Cleanup: (Y/N) N

pH: ___

Sulfur Cleanup: (Y/N) N

CAS NO. COMPOUND CONCENTRATION UNITS:
(ug/L or ug/Kg) UG/L q

106-93-4	1,2-DIBROMOETHANE (EDB)	0.020	U
96-12-8	1,2-DIBROMO-3-CHLOROPROPANE	0.020	U

ISSUED: 07/19/2000

CERTIFICATE OF ANALYSIS

PAGE 1 OF 1

Client: H2M Labs Inc.
Environmental & Ind. Analytical Lab
575 Broad Hollow Road
Melville NY 11747-5076


ATT: Stu Murrell

NY DOH # 11216 CT # PH-0201
PA DEP # 08380 ICR PA017

Sample ID #: 2000-07-07-165
Sample Date: 07/06/2000
Sample Time: 0:00
Sampled by:
Received by: DLM
Date & Time Recd: 07/07/2000 15:00

Project Description: 0706-160
Sample Location: Well 7
Sample Matrix: DRINKING WATER

Parameter	Results	Detection Limit (DL)		Method	Extracted	Analyzed	Analyst
		Max. Cont. Level (MCL)					
EPA 548.1 - Endothall Endothall	ND<5.0 ug/L	100.0 ug/L	MCL	EPA 548.1	07/11/2000	07/13/2000	

Reviewed by: 
Irene Chu
Laboratory Director

* Analysis performed by NYS DOH# 11072, PA DEP# 68-376



1B
SEMIVOLATILE ORGANICS ANALYSIS DATA SHEET

EPA SAMPLE NO.

WELL 7 RAW

Lab Name: H2M LABS INC.
 Lab Code: 10478 Case No.:
 Matrix: (soil/water) WATER
 Sample wt/vol: 1000 (g/ml) ML
 Level: (low/med) LOW
 % Moisture: decanted: (Y/N) N
 Concentrated Extract Volume: 1000 (uL)
 Injection Volume: 2.0 (uL)
 GPC Cleanup: (Y/N) N pH:

Contract:
 SAS No.: SDG No.: BNLM097
 Lab Sample ID: 2000706-160
 Lab File ID: C15751.D
 Date Received: 07/06/00
 Date Extracted: 07/13/00
 Date Analyzed: 08/07/00
 Dilution Factor: 1.0

CAS NO.	COMPOUND	CONCENTRATION UNITS:	
		(ug/L or ug/Kg)	UG/L
77474	Hexachlorocyclopentadiene	0.90	U
118741	Hexachlorobenzene	0.11	U
103231	Di(2-Ethylhexyl)adipate	0.17	U
117817	bis(2-Ethylhexyl)phthalate	81.29	85U
50328	Benzo[a]pyrene	0.12	U
1918167	Propachlor	0.08	U
122349	Simazine	0.11	U
1912249	Atrazine	0.12	U
21087649	Metribuzin	0.07	U
15972608	Alachlor	0.14	U
51218452	Metolachlor	0.07	U
23184669	Butachlor	0.17	U

C 8/11/00

S 0055

FORM 1
PESTICIDE ORGANICS ANALYSIS DATA SHEET

CLIENT SAMPLE NO.

Lab Name: H2M LABS, INC.

Contract:

WELL7

Lab Code:

Case No.:

SAS No.:

SDG No.: BNLM097

Matrix: (soil/water) WATER

Lab Sample ID: 20000706-160

Sample wt/vol: 35 (g/mL) ML

Lab File ID: BE01374

% Moisture: ----- decanted: (Y/N) ___

Date Received: 07/06/00

Extraction: (SepF/Cont/Sonc) SONC

Date Extracted: 07/10/00

Concentrated Extract Volume: 2000(uL)

Date Analyzed: 07/11/00

Injection Volume: 2.0(uL)

Dilution Factor: 1.0

GPC Cleanup: (Y/N) N

pH: ___

Sulfur Cleanup: (Y/N) N

CAS NO.

COMPOUND

CONCENTRATION UNITS:
(ug/L or ug/Kg) UG/L

Q

106-93-4-----	1,2-DIBROMOETHANE (EDB)-----	0.020	U
96-12-8-----	1,2-DIBROMO-3-CHLOROPROPANE_	0.020	U

FORM 1
SEMIVOLATILE ORGANICS ANALYSIS DATA SHEET

CLIENT SAMPLE NO.

WELL 7 (RAW)

Lab Name: H2M LABS, INC. Contract: _____
 Lab Code: _____ Case No.: _____ SAS No.: _____ SDG No.: ENLM097
 Matrix: (soil/water) WATER Lab Sample ID: 20000706-160
 Sample wt/vol: 35.00 (g/mL) ML Lab File ID: WB01266
 % Moisture: _____ decanted: (Y/N) _____ Date Received: 7/6/00 _____
 Extraction: (SepF/Cont/Sonc) MICROEXTRAC Date Extracted: 07/07/00
 Concentrated Extract Volume: 2000 (uL) Date Analyzed: 07/12/00
 Injection Volume: 1.0 (uL) Dilution Factor: 1.0
 GPC Cleanup: (Y/N) Y pH: _____ Sulfur Cleanup: (Y/N) N

CAS NO.	COMPOUND	CONCENTRATION UNITS: (ug/L or ug/Kg) UG/L	Q
58-89-9	gamma-BHC (Lindane)	0.025	U
76-44-8	Heptachlor	0.025	U
309-00-2	Aldrin	0.025	U
1024-57-3	Heptachlor epoxide	0.025	U
60-57-1	Dieldrin	0.05	U
72-20-8	Endrin	0.05	U
72-43-5	Methoxychlor	0.25	U
57-74-9	Chlordane	0.5	U
8001-35-2	Toxaphene	2.5	U
TOTAL PCB'S		0.5	U

FORM 1
SEMIVOLATILE ORGANICS ANALYSIS DATA SHEET

CLIENT SAMPLE NO.

WELL4-6-7

Lab Name: H2M LABS, INC.

Contract:

Lab Code:

Case No.:

SAS No.:

SDG No.: BNLM097

Matrix: (soil/water) WATER

Lab Sample ID: 20000706-167

Sample wt/vol:

Lab File ID: LC00907

Level: (low/med) LOW

Date Received: 7/6/00

07.
8/6/00

% Moisture: _____ decanted: (Y/N) _____

Date Extracted:

Concentrated Extract Volume:

Date Analyzed: 07/20/00

Injection Volume: 400.0 (uL)

Dilution Factor: 1.0

GPC Cleanup: (Y/N) N pH: _____

CONCENTRATION UNITS:
(ug/L or ug/Kg) UG/L

Q

CAS NO.	COMPOUND	CONCENTRATION UNITS: (ug/L or ug/Kg) UG/L
1646-87-3	ALDICARB SULFOXIDE	1.0 U
1646-88-4	ALDICARB SULFONE	1.0 U
23135-22-0	OXAMYL	1.0 U
16752-77-5	METHOMYL	1.0 U
16655-82-6	3-HYDROXYCARBOFURAN	1.0 U
1563-66-2	CARBOFURAN	1.0 U
63-25-2	CARBARYL	1.0 U
116-06-3	ALDICARB	1.0 U

FORM 1
SEMIVOLATILE ORGANICS ANALYSIS DATA SHEET

CLIENT SAMPLE NO.

WELL4-6-7

Lab Name: H2M LABS, INC.

Contract:

Lab Code:

Case No.:

SAS No.:

SDG No.: BNLM097

Matrix: (soil/water) WATER

Lab Sample ID: 20000706-167

Sample wt/vol: 250.0 (g/mL) ML

Lab File ID: DIQ0252

Moisture: _____ decanted: (Y/N) _____

Date Received: 07/06/00

Extraction: (SepF/Cont/Sonc)

Date Extracted: 07/10/00

Concentrated Extract Volume: 10000 (uL)

Date Analyzed: 07/19/00

Injection Volume: 200.0 (uL)

Dilution Factor: 1.0

GPC Cleanup: (Y/N) N

pH: _____

Sulfur Cleanup: (Y/N) N

CAS NO.	COMPOUND	CONCENTRATION UNITS: (ug/L or ug/Kg) UG/L	Q
---------	----------	--	---

85-00-7-----	DIQUAT	1.0	U
--------------	--------	-----	---

FORM 1
SEMIVOLATILE ORGANICS ANALYSIS DATA SHEET

CLIENT SAMPLE NO.

WELL4-6-7

Lab Name: H2M LABS, INC.

Contract:

Lab Code:

Case No.:

SAS No.:

SDG No.: BNLM097

Matrix: (soil/water) WATER

Lab Sample ID: 20000706-167

Sample wt/vol: ~~0-100~~ (g/mL) ML

Lab File ID: GLY0490

Level: (low/med) LOW

Date Received: 07/06/00

% Moisture: _____ decanted: (Y/N) ___

Date Extracted: ~~07/13/00~~

Concentrated Extract Volume: ~~1(uL)~~

Date Analyzed: 07/13/00
tw 8/4/00

Injection Volume: 100.0(uL)

Dilution Factor: 1.0

GPC Cleanup: (Y/N) N

pH: ___

CAS NO.	COMPOUND	CONCENTRATION UNITS: (ug/L or ug/Kg) UG/L	q
1071-83-6- - - - -	GLYPHOSATE		10 U

DATE ISSUED: 07/19/2000

CERTIFICATE OF ANALYSIS

PAGE 1 OF 1

NY DOH # 11216 CT # PH-0201
PA DEP # 08380 ICR PA017

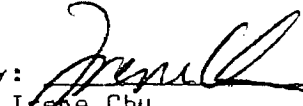
Client: H2M Labs Inc.
Environmental & Ind. Analytical Lab
575 Broad Hollow Road
Melville NY 11747-5076

Sample ID #: 2000-07-07-166
Sample Date: 07/06/2000
Sample Time: 0:00
Sampled by:
Received by: DLM
Date & Time Recd: 07/07/2000 15:00

ATT: Stu Murrell

Project Description: 0706-161
Sample Location: Well 10
Sample Matrix: DRINKING WATER

Parameter	Results	Detection Limit (DL)		Method	Extracted	Analyzed	Analyst
		Max. Cont. Level (MCL)					
* EPA 548.1 - Endothall	ND<5.0 ug/L	100.0 ug/L	MCL	EPA 548.1	07/11/2000	07/13/2000	
Endothall							

Reviewed by: 
Irene Chu
Laboratory Director

Q* Analysis performed by NYS DOH# 11072, PA DEP# 68-376



1B
SEMIVOLATILE ORGANICS ANALYSIS DATA SHEET

EPA SAMPLE NO.

WELL 10 RAW

Lab Name: H2M LABS INC. Contract: _____

Lab Code: 10478 Case No.: _____ SAS No.: _____ SDG No.: BNL097

Matrix: (soil/water) WATER Lab Sample ID: 2000706-161

Sample wt/vol: 1000 (g/ml) ML Lab File ID: C15752.D

Level: (low/med) LOW Date Received: 07/06/00

% Moisture: _____ decanted: (Y/N) N Date Extracted: 07/13/00

Concentrated Extract Volume: 1000 (uL) Date Analyzed: 08/07/00

Injection Volume: 2.0 (uL) Dilution Factor: 1.0

GPC Cleanup: (Y/N) N pH: _____

CAS NO.	COMPOUND	CONCENTRATION UNITS:	
		(ug/L or ug/Kg) UG/L	Q
77474	Hexachlorocyclopentadiene	0.90	U
118741	Hexachlorobenzene	0.11	U
103231	Di(2-Ethylhexyl)adipate	0.17	U
117817	bis(2-Ethylhexyl)phthalate	81.24	JBV
50328	Benzo[a]pyrene	0.12	U
1918167	Propachlor	0.08	U
122349	Simazine	0.11	U
1912249	Atrazine	0.12	U
21087649	Metribuzin	0.07	U
15972608	Alachlor	0.14	U
51218452	Metolachlor	0.07	U
23184669	Butachlor	0.17	U

08/11/00

S 0059

FORM 1
 PESTICIDE ORGANICS ANALYSIS DATA SHEET

CLIENT SAMPLE NO.

Lab Name: H2M LABS, INC.

Contract:

WELL10

Lab Code:

Case No.:

SAS No.:

SDG No.: BNLM097

Matrix: (soil/water) WATER

Lab Sample ID: 20000706-161

Sample wt/vol: 35 (g/mL) ML

Lab File ID: BE01375

% Moisture: ----- decanted: (Y/N)___

Date Received: 07/06/00

Extraction: (SepF/Cont/Sonc) SONC

Date Extracted: 07/10/00

Concentrated Extract Volume: 2000(uL)

Date Analyzed: 07/11/00

Injection Volume: 2.0(uL)

Dilution Factor: 1.0

GPC Cleanup: (Y/N) N

pH: ___

Sulfur Cleanup: (Y/N) N

CAS NO.

COMPOUND

CONCENTRATION UNITS:
 (ug/L or ug/Kg) UG/L

Q

106-93-4-----	1,2-DIBROMOETHANE (EDB)-----	0.020	U
96-12-8-----	1,2-DIBROMO-3-CHLOROPROPANE_	0.020	U

FORM 1
SEMIVOLATILE ORGANICS ANALYSIS DATA SHEET

CLIENT SAMPLE NO.

WELL 10(RAW)

Lab Name: H2M LABS, INC.

Contract:

Lab Code:

Case No.:

SAS No.:

SDG No.: BNLM097

Matrix: (soil/water) WATER

Lab Sample ID: 20000706-161

Sample wt/vol: 35.00 (g/mL) ML

Lab File ID: WB01267

* Moisture: _____ decanted: (Y/N) _____

Date Received: 7/6/00 _____

Extraction: (SepF/Cont/Sonc) MICROEXTRAC

Date Extracted: 07/07/00

Concentrated Extract Volume: 2000 (uL)

Date Analyzed: 07/12/00

Injection Volume: 1.0 (uL)

Dilution Factor: 1.0

GPC Cleanup: (Y/N) Y

pH: _____

Sulfur Cleanup: (Y/N) N

CAS NO.	COMPOUND	CONCENTRATION UNITS: (ug/L or ug/Kg) UG/L	Q
58-89-9	-----gamma-BHC (Lindane)	0.025	U
76-44-8	-----Heptachlor	0.025	U
309-00-2	-----Aldrin	0.025	U
1024-57-3	-----Heptachlor epoxide	0.025	U
60-57-1	-----Dieldrin	0.05	U
72-20-8	-----Endrin	0.05	U
72-43-5	-----Methoxychlor	0.25	U
57-74-9	-----Chlordane	0.5	U
8001-35-2	-----Toxaphene	2.5	U
	TOTAL PCB'S	0.5	U

TE ISSUED: 07/19/2000

CERTIFICATE OF ANALYSIS

PAGE 1 OF 1

NY DOH # 11216 CT # PH-0201
PA DEP # 08380 ICR PA017

Client: H2M Labs Inc.
Environmental & Ind. Analytical Lab
575 Broad Hollow Road
Melville NY 11747-5076


Sample ID #: 2000-07-07-167
Sample Date: 07/06/2000
Sample Time: 0:00
Sampled by:

ATT: Stu Murrell

Received by: DLM
Date & Time Recd: 07/07/2000 15:00

Project Description: 0706-163
Sample Location: Well 11
Sample Matrix: DRINKING WATER

Parameter	Results	Detection Limit (DL)		Method	Extracted	Analyzed	Analyst
		Max. Cont. Level (MCL)					
EPA 548.1 - Endothall	ND<5.0 ug/L	100.0 ug/L	MCL	EPA 548.1	07/11/2000	07/13/2000	

Reviewed by: 
Irene Chu
Laboratory Director

Q* Analysis performed by NYS DOH# 11072, PA DEP# 68-376



FORM 1
PESTICIDE ORGANICS ANALYSIS DATA SHEET

CLIENT SAMPLE NO.

WELL11

Lab Name: H2M LABS, INC.

Contract:

Lab Code:

Case No.:

SAS No.:

SDG No.: BNLM097

Matrix: (soil/water) WATER

Lab Sample ID: 20000706-163

Sample wt/vol: 35 (g/mL) ML

Lab File ID: BE01376

% Moisture: ----- decanted: (Y/N)---

Date Received: 07/06/00

Extraction: (SepF/Cont/Sonc) SONC

Date Extracted: 07/10/00

Concentrated Extract Volume: 2000(uL)

Date Analyzed: 07/11/00

Injection Volume: 2.0(uL)

Dilution Factor: 1.0

GPC cleanup: (Y/N) N

pH: ---

Sulfur Cleanup: (Y/N) N

CAS NO.

COMPOUND

CONCENTRATION UNITS:
(ug/L or ug/Kg) UG/L

Q

106-93-4-----	1,2-DIBROMOETHANE (EDB)	0.020	U
96-12-8-----	1,2-DIBROMO-3-CHLOROPROPANE	0.020	U

FORM 1
SEMIVOLATILE ORGANICS ANALYSIS DATA SHEET

CLIENT SAMPLE NO.

WELL 11(RAW)

Lab Name: H2M LABS, INC.

Contract:

Lab Code:

Case No.:

SAS No.:

SDG No.: BNLM097

Matrix: (soil/water) WATER

Lab Sample ID: 20000705-163

Sample wt/vol: 35.00 (g/mL) ML

Lab File ID: WB01268

* Moisture: _____ decanted: (Y/N) _____

Date Received: 7/6/00 _____

Extraction: (SepF/Cont/Sonc) MICROEXTRAC

Date Extracted: 07/07/00

Concentrated Extract Volume: 2000(uL)

Date Analyzed: 07/12/00

Injection Volume: 1.0(uL)

Dilution Factor: 1.0

GPC Cleanup: (Y/N) Y

pH: _____

Sulfur Cleanup: (Y/N) N

CAS NO. COMPOUND CONCENTRATION UNITS:
(ug/L or ug/Kg) UG/L Q

58-89-9	gamma-BHC (Lindane)	0.025	U
76-44-8	Heptachlor	0.025	U
309-00-2	Aldrin	0.025	U
1024-57-3	Heptachlor epoxide	0.025	U
60-57-1	Dieldrin	0.05	U
72-20-8	Endrin	0.05	U
72-43-5	Methoxychlor	0.25	U
57-74-9	Chlordane	0.5	U
8001-35-2	Toxaphene	2.5	U
TOTAL PCB'S		0.5	U

1B
SEMIVOLATILE ORGANICS ANALYSIS DATA SHEET

EPA SAMPLE NO.

WELL 11 RAW

Lab Name: H2M LABS INC.
 Lab Code: 10478 Case No.:
 Matrix: (soil/water) WATER
 Sample wt/vol: 1000 (g/ml) ML
 Level: (low/med) LOW
 % Moisture: decanted: (Y/N) N
 Concentrated Extract Volume: 1000 (uL)
 Injection Volume: 2.0 (uL)
 GPC Cleanup: (Y/N) N pH:

Contract:
 SAS No.: SDG No.: BNLM097
 Lab Sample ID: 2000706-163
 Lab File ID: C15753.D
 Date Received: 07/06/00
 Date Extracted: 07/13/00
 Date Analyzed: 08/07/00
 Dilution Factor: 1.0

CAS NO.	COMPOUND	CONCENTRATION UNITS:	
		(ug/L or ug/Kg)	UG/L Q
77474	Hexachlorocyclopentadiene	0.90	U
118741	Hexachlorobenzene	0.11	U
103231	Di(2-Ethylhexyl)adipate	0.17	U
117817	bis(2-Ethylhexyl)phthalate	81.29	BU
50328	Benzo[a]pyrene	0.12	U
1918167	Propachlor	0.08	U
122349	Simazine	0.11	U
1912249	Atrazine	0.12	U
21087649	Metribuzin	0.07	U
15972608	Alachlor	0.14	U
51218452	Metolachlor	0.07	U
23184669	Butachlor	0.17	U

G 8/11/00

S 0064



ENVIRONMENTAL
 390 Pennsylvania Avenue
 S. Waverly, PA 18840
 Phone (570) 888-0169
 Fax (570) 888-0717

DATE ISSUED: 07/19/2000

CERTIFICATE OF ANALYSIS

PAGE 1 OF 1

NY DOH # 11216 CT # PH-0201
 PA DEF # 08380 ICR PA017

Client: H2M Labs Inc.
 Environmental & Ind. Analytical Lab
 575 Broad Hollow Road
 Melville NY 11747-5076

Sample ID #: 2000-07-07-168
 Sample Date: 07/06/2000
 Sample Time: 0:00
 Sampled by:

ATT: Stu Murrell

Received by: DLM
 Date & Time Recd: 07/07/2000 15:00

Project Description: 0706-165
 Sample Location: Well 12
 Sample Matrix: DRINKING WATER

Parameter	Results	Detection Limit (DL)		Method	Extracted	Analyzed	Analysis
		Max. Cont. Level (MCL)					
Q* EPA 548.1 - Endothall				EPA 548.1	07/11/2000	07/13/2000	
Endothall	ND<5.0 ug/L	100.0 ug/L	MCL				

Reviewed by: 
 Irene Chu
 Laboratory Director

Q* Analysis performed by NYS DOH# 11072, PA DEF# 68-376



FORM 1
 PESTICIDE ORGANICS ANALYSIS DATA SHEET

CLIENT SAMPLE NO.

WELL12

Lab Name: H2M LABS, INC. Contract: _____
 Lab Code: _____ Case No.: _____ SAS No.: _____ SDG No.: BNLM097
 Matrix: (soil/water) WATER Lab Sample ID: 20000706-165
 Sample wt/vol: 35 (g/mL) ML Lab File ID: BE01377
 % Moisture: _____ decanted: (Y/N) ___ Date Received: 07/06/00
 Extraction: (SepF/Cont/Sonc) SONC Date Extracted: 07/10/00
 Concentrated Extract Volume: 2000(uL) Date Analyzed: 07/11/00
 Injection Volume: 2.0(uL) Dilution Factor: 1.0
 GPC Cleanup: (Y/N) N PH: ___ Sulfur Cleanup: (Y/N) N

CAS NO.	COMPOUND	CONCENTRATION UNITS: (ug/L or ug/Kg) UG/L	Q
106-93-4	1,2-DIBROMOETHANE (EDB)	0.020	U
96-12-8	1,2-DIBROMO-3-CHLOROPROPANE	0.020	U

FORM 1
SEMIVOLATILE ORGANICS ANALYSIS DATA SHEET

CLIENT SAMPLE NO.

WELL 12 (RAW)

Lab Name: H2M LABS, INC.

Contract:

Lab Code:

Case No.:

SAS No.:

SDG No.: BNLM097

Matrix: (soil/water) WATER

Lab Sample ID: 20000706-165

Sample wt/vol: 35.00 (g/mL) ML

Lab File ID: WB01269

* Moisture: _____ decanted: (Y/N) _____

Date Received: 7/6/00 _____

Extraction: (SepF/Cont/Sonc) MICROEXTRAC

Date Extracted: 07/07/00

Concentrated Extract Volume: 2000 (uL)

Date Analyzed: 07/12/00

Injection Volume: 1.0 (uL)

Dilution Factor: 1.0

GPC Cleanup: (Y/N) Y

pH: _____

Sulfur Cleanup: (Y/N) N

CAS NO. COMPOUND CONCENTRATION UNITS:
(ug/L or ug/Kg) UG/L Q

58-89-9	gamma-BHC (Lindane)	0.025	U
76-44-8	Heptachlor	0.025	U
309-00-2	Aldrin	0.025	U
1024-57-3	Heptachlor epoxide	0.025	U
60-57-1	Dieldrin	0.05	U
72-20-8	Endrin	0.05	U
72-43-5	Methoxychlor	0.25	U
57-74-9	Chlordane	0.5	U
8001-35-2	Toxaphene	2.5	U
TOTAL PCB'S		0.5	U

1B
SEMIVOLATILE ORGANICS ANALYSIS DATA SHEET

EPA SAMPLE NO.

WELL 12 RAW

Lab Name: H2M LABS INC. Contract: _____
 Lab Code: 10478 Case No.: _____ SAS No.: _____ SDG No.: BNLM097
 Matrix: (soil/water) WATER Lab Sample ID: 2000706-165
 Sample wt/vol: 1000 (g/ml) ML Lab File ID: C15754.D
 Level: (low/med) LOW Date Received: 07/06/00
 % Moisture: _____ decanted:(Y/N) N Date Extracted: 07/13/00
 Concentrated Extract Volume: 1000 (uL) Date Analyzed: 08/07/00
 Injection Volume: 2.0 (uL) Dilution Factor: 1.0
 GPC Cleanup: (Y/N) N pH: _____

CAS NO.	COMPOUND	CONCENTRATION UNITS:		Q
		(ug/L or ug/Kg)	UG/L	
77474	Hexachlorocyclopentadiene	0.90	U	
118741	Hexachlorobenzene	0.11	U	
103231	Di(2-Ethylhexyl)adipate	0.17	U	
117817	bis(2-Ethylhexyl)phthalate	81.29	U	
50328	Benzo[a]pyrene	0.12	U	
1918167	Propachlor	0.08	U	
122349	Simazine	0.11	U	
1912249	Atrazine	0.12	U	
21087649	Metribuzin	0.07	U	
15972608	Alachlor	0.14	U	
51218452	Metolachlor	0.07	U	
23184669	Butachlor	0.17	U	

Rec'd 8/11/00

S 0069

WELL1⁰1112

Lab Name: H2M LABS, INC. Contract: _____

Lab Code: _____ Case No.: _____ SAS No.: _____ SDG No.: BNLM097

Matrix: (soil/water) WATER Lab Sample ID: 20000706-168

Sample wt/vol: ~~0.100~~ (g/mL) ML Lab File ID: GLY0491

Level: (low/med) LOW Date Received: 07/06/00

% Moisture: _____ decanted: (Y/N) ___ Date Extracted: ~~07/13/00~~ *hi 8/4/00*

Concentrated Extract Volume: ~~1(uL)~~ Date Analyzed: 07/13/00

Injection Volume: 100.0(uL) Dilution Factor: 1.0

GPC Cleanup: (Y/N) N pH: _____

CAS NO.	COMPOUND	CONCENTRATION UNITS: (ug/L or ug/Kg) UG/L	Q
1071-83-6	GLYPHOSATE		10 U

FORM 1
SEMIVOLATILE ORGANICS ANALYSIS DATA SHEET

CLIENT SAMPLE NO.

WELL191112

Lab Name: H2M LABS, INC.

Contract:

Lab Code:

Case No.:

SAS No.:

SDG No.: BNLM097

Matrix: (soil/water) WATER

Lab Sample ID: 20000706-168

Sample wt/vol: 250.0 (g/mL) ML

Lab File ID: DIQ0253

% Moisture: _____ decanted: (Y/N) _____

Date Received: 07/06/00

Extraction: (SepF/Cont/Sonc)

Date Extracted: 07/10/00

Concentrated Extract Volume: 10000 (uL)

Date Analyzed: 07/19/00

Injection Volume: 200.0 (uL)

Dilution Factor: 1.0

GPC Cleanup: (Y/N) N

pH: _____

Sulfur Cleanup: (Y/N) N

CAS NO.	COMPOUND	CONCENTRATION UNITS: (ug/L or ug/Kg) UG/L	Q
---------	----------	--	---

85-00-7-----	DIQUAT	1.0	U
--------------	--------	-----	---

FORM 1
SEMIVOLATILE ORGANICS ANALYSIS DATA SHEET

CLIENT SAMPLE NO.

WELL-10-11-12

Lab Name: H2M LABS, INC.

Contract:

Lab Code:

Case No.:

SAS No.:

SDG No.: BNLM097

Matrix: (soil/water) WATER

Lab Sample ID: 20000706-168

Sample wt/vol:

Lab File ID: LC00908

Level: (low/med) LOW

Date Received: 7/6/00

02 8/6/00

% Moisture: _____ decanted: (Y/N) _____

Date Extracted:

Concentrated Extract Volume:

Date Analyzed: 07/20/00

Injection Volume: 400.0 (uL)

Dilution Factor: 1.0

GPC Cleanup: (Y/N) N pH: _____

CAS NO. COMPOUND CONCENTRATION UNITS:
(ug/L or ug/Kg) UG/L Q

1646-87-3-----	ALDICARB SULFOXIDE	1.0 U
1646-88-4-----	ALDICARB SULFONE	1.0 U
23135-22-0-----	OXAMYL	1.0 U
16752-77-5-----	METHOMYL	1.0 U
16655-82-6-----	3-HYDROXYCARBOFURAN	1.0 U
1563-66-2-----	CARBOFURAN	1.0 U
63-25-2-----	CARBARYL	1.0 U
116-06-3-----	ALDICARB	1.0 U

ATTACHMENT VII

**Brookhaven National Laboratory
Potable Water Supply**

**2000 Annual Asbestos Analytical Results for
the BNL Potable Water Distribution System**

EMSL Analytical, Inc.

117 Haddon Ave., Westmont, NJ 08108

Phone: (609) 858-4800

Fax: (609) 858-4960

Email: stiegel@EMSL.com

Attn: H2M Labs, Inc.

575 Broad Hollow Road
Melville, NY 11747

Fax: 516-420-8436

Project: 097/Brookhaven Labs

Phone: 516-694-3040

Customer ID: H2MLS0
Customer PO: L 6715
Received: 07/07/00 1:45 PM
EMSL Order: 040011111
EMSL Project ID:

Analysis Date

7/15/00

**Asbestos Analysis in Water by Transmission Electron Microscopy (TEM) Performed by NY
ELAP 198.2 Method**

SAMPLE ID	#ASBESTOS FIBERS		#NON-ASBESTOS FIBERS		TYPE(S) OF ASBESTOS	ANALYTICAL SENSITIVITY (MFL)		CONFIDENCE LIMITS		CONCENTRATION OF ASBESTOS FIBERS (MFL)		COMMENTS
	All sizes >10um	>10um	All sizes >10um	>10um		All sizes >10um	>10um	All sizes >10um	>10um			
0707-022	0	0	0	0		0.18	0.18	0.00-0.65	0.00-0.65	<0.65	<0.65	
04001111-0002												

Revised report NYS report used.

Analysis Date 7/15/00

Margaret Maronksi
Analysis

Stephen Siegel

Stephen Siegel, CIH
or other approved signatory

Sample collection and containers provided by the client, acceptable bottle blank level is defined as <=0.01MFL >10um. ND=None Detected. Fiber counting data will be reported as follows: No Fibers detected: The value will be reported as less than 380% of the concentration equivalent to on fiber... 1 to 4 fibers: The result will be reported as less than the corresponding upper 95% confidence limit (Poisson), 5 to 30 fibers: Mean and 95% confidence intervals will be reported on the basis of the Poisson assumption. When the Gaussian 95% confidence interval is selected for data reporting, the Poisson will also be noted.

