

1998 Adoption ★ Trends



Every child deserves a safe, permanent family. The vision of Oregon's Adoption Reform Strategic Plan is that the most appropriate permanent plan for every waiting child will be achieved as quickly as possible.

- 849 children were placed in adoptive homes in 1998
- SCF placed 214 children under 3 years old in 1998 – over 25% of total adoptions
- Most children (66%) were placed with relatives or foster parents
- 231 minority children were placed for adoption in 1998
- 96% of adoptive placements continued to finalization without disruption

1998 Adoption Trends



417
(49%)
males

432
(51%)
females



Children placed in 1998 were about half boys and half girls.



Characteristics of Adopted Children

SCF CHILDREN HAVE SPECIAL NEEDS

The majority of SCF children placed for adoption are considered “special needs” children. They have one or more of the following characteristics:

- Are six years of age or older.
- Have a physical or emotional disability.
- Are part of a sibling group.
- Are part of an ethnic minority.

Workers are also seeing an increased number of adopted children who have been prenatally exposed to drugs and/or alcohol.

AGE

less than 3	214	25.2%
3-4 yrs	197	23.2%
5-7 yrs	221	26.0%
8-10 yrs	136	16.0%
11-13 yrs	67	7.9%
14 and older	14	1.7%

- SCF placed 214 children under the age of three years in the year ended June 30, 1998.
- As children get older, the chances for an adoptive placement drop dramatically, creating a severe need for adoptive homes for children over age 7.

CHILD'S ETHNICITY

White	618	72.8%
African-American	106	12.5%
Hispanic	78	9.2%
Native American	28	3.3%
Asian	7	0.8%
Multiple minority	12	1.4%

- 27% of children placed for adoption in the year ended June 30, 1998 belonged to ethnic minorities.

Characteristics of Adoptive Families

1998 Adoption Trends

ADOPTIVE FAMILIES

- Adoptive homes selected by SCF have a high rate of stability and permanence. The no-disruption rate remained at 96% in 1998.
- Non-relative foster parents became adoptive parents for 306 (36.0%) of children placed.
- 227 children (26.7%) were placed with relatives who were providing foster care.
- An additional 30 children (3.5%) were placed with relatives who were not providing foster care.
- 169 (20.0%) children were placed with a single parent.

VALUING CULTURE

- SCF is continuing its efforts to recruit much needed adoptive families who can meet the needs of minority children, with special emphasis on recruitment activities in ethnic minority communities and among extended families of these children.

KEEPING BROTHERS AND SISTERS TOGETHER

- SCF places a high value on placing siblings together whenever possible. Recruitment of adoptive families who can keep siblings together is a priority.



RECRUITING HOMES

Adoptive homes were recruited for children not placed with a relative or foster parent. Of those 286 children:

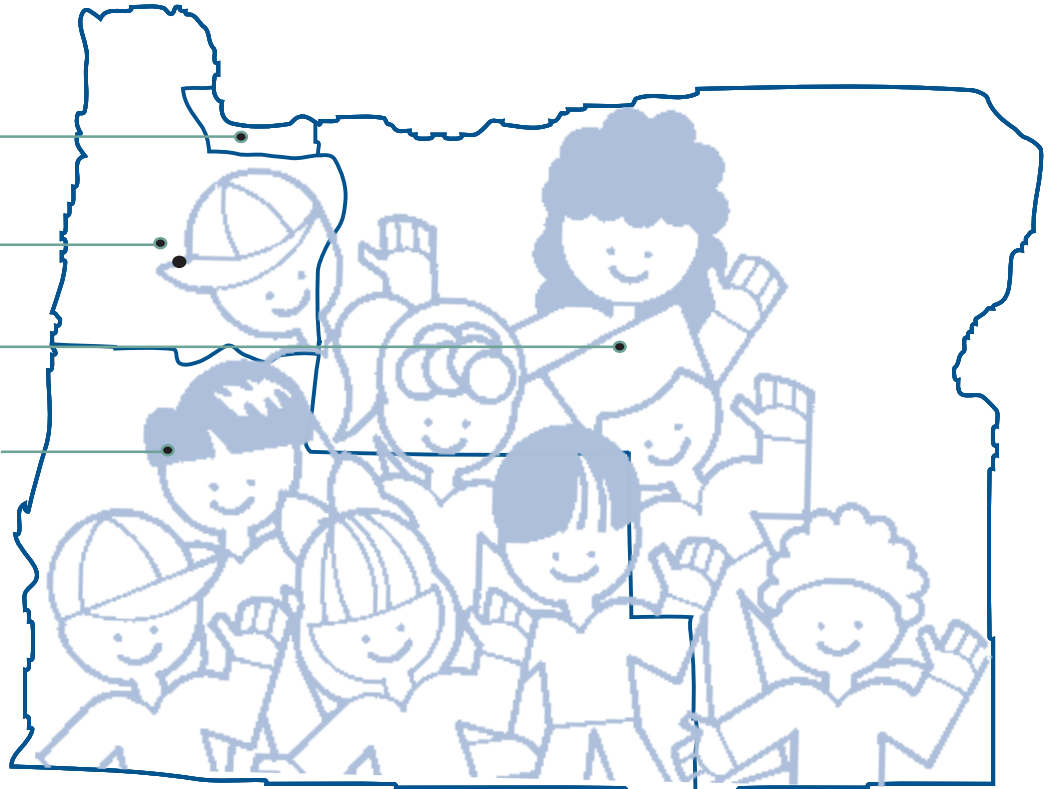
- 160 children (55.9%) were placed into homes recruited by SCF.
- 58 children (20.3%) were placed into homes recruited by Oregon private adoption agencies.
- 44 children (15.4%) were placed into homes recruited by out-of-state private agencies
- 23 children (8.0%) were placed into homes recruited by out-of-state public agencies
- 1 child (0.4%) was placed out of the country

1998 Adoption Trends

The 849 children came from:



- Metro Region
338
- Western Region
212
- Eastern Region
77
- Southern Region
222



The 849 children went to:

- Metro Region - 156
- Western Region - 230
- Eastern Region - 101
- Southern Region - 168
- Oregon private licensed adoption agencies - 62
- Out of state - 132 (including 1 to Mexico)

77.1% of the children were placed by SCF adoption workers and 22.9% by other agencies.

