

*DEPARTMENT OF HUMAN SERVICES  
ADDICTIONS AND MENTAL HEALTH DIVISION*

**CHILDREN'S  
MENTAL HEALTH  
UTILIZATION  
REPORT**

*JULY 1, 2006  
THROUGH  
JUNE 30, 2007*



## EXECUTIVE SUMMARY

The 2003 Oregon Legislative Assembly mandated significant changes for the Children's Mental Health System in Oregon. The *Children's Mental Health Utilization Report* describes how the Addictions and Mental Health Division (AMH) is implementing the required changes. This is the third report that covers the changes occurring within Children's Mental Health Services.

### **THIS REPORT COVERS THE FOLLOWING:**

- Admissions to each of the various levels of care;
- Service Penetration Rate for Outpatient, PDTS, PRTS and Acute Care;
- Average Days of Service within PDTS and PRTS; Average Length of Stay within Acute Care, Sub-Acute Care, STS, SCIP, and SAIP;
- Readmissions to same or to a higher level of care;
- Delivery of Community-Based Services for various levels of care.

### **LIMITATIONS:**

1. This report does not include tests of the statistical significance of apparent differences among providers or across time periods. Incorporation of such statistics is still under discussion with AMH Children's team and other quality improvement committees.
2. Data pulled is from the Decision Support/Surveillance and Utilization Review System (DSSURS) data system (unless otherwise noted) reflects only Medicaid eligible youth and the services delivered to the Medicaid eligible population, and;
3. There is a 180-day lag between the times a service is delivered and the time the services are contractually required to be billed. Any services delivered fewer than 180-days prior to the date the report is published will not be included.

### **REPORT SCHEDULE:**

Reports will be produced on a quarterly basis.

# TABLE OF CONTENTS

Executive Summary.....	i
------------------------	---

## **ENROLLMENT**

Figure 1: Enrollment of Children Age 0-17 by MHO: 2 <sup>nd</sup> Qtr 2007.....	1
Table 1: Enrollment for Children Age 0-17 by MHO: all quarters.....	1

## **ADMISSIONS**

Table 2: Outpatient Admissions.....	2
Table 3: PDTS Admissions.....	2
Table 4: PDTS Admissions.....	4
Table 5: PRTS A&E Admissions.....	5
Table 6: PRTS (non-A&E) Admissions.....	5
Table 7: STS Admissions.....	6
Table 8: Sub-Acute Admissions.....	6
Table 9: SCIP/SAIP Admissions.....	7
Table 10: Acute Care Admissions.....	7

## **PERCENTAGE RATES**

Table 11: Outpatient Services Percentage Rate.....	8
Table 12: PDTS Services Percentage Rate.....	8
Table 13: Acute Care Services Percentage Rate.....	9

## **AVERAGE LENGTH OF STAY/DAYS OF SERVICE**

Table 14: PDTS Average Days of Service.....	11
Table 15: PDTS Providers Average Days of Service for Children 0-17.....	12
Table 16: PRTS A&E Providers Average Length of Stay for Children 0-17.....	13
Table 17: PRTS Providers Average Length of Stay for Children 0-17.....	13
Table 18: STS Average LOS for Children 0-17.....	14
Table 19: Sub-Acute Services Average LOS for Children 0-17.....	14
Table 20: SCIP/SAIP Services Average LOS for Children 0-17.....	15
Table 21: Acute Care Mental Health Services Average LOS.....	15

## **DISTRIBUTION OF SERVICES**

Figure 2: Assessment & Evaluation.....	17
Figure 3: Case Management.....	18
Figure 4: Child & Family Team Meeting.....	18
Figure 5: Crisis Services.....	19

## TABLE OF CONTENTS

*(continued)*

Figure 6:	Family Therapy .....	19
Figure 7:	Group Therapy .....	20
Figure 8:	Individual Therapy .....	20
Figure 9:	Individual Therapy with Medication Management .....	21
Figure 10:	Level of Need Determination.....	21
Figure 11:	Medication Management.....	22
Figure 12:	Outpatient Therapy .....	22
Figure 13:	Respite Services.....	23
Figure 14:	Skills Training .....	23
Figure 15:	Sub-Acute Services .....	24
Figure 16:	Wrap Around Services.....	24

### **GLOSSARIES**

Glossary of Terms .....	255
Glossary of Service Categories.....	29

# ***ENROLLMENT***

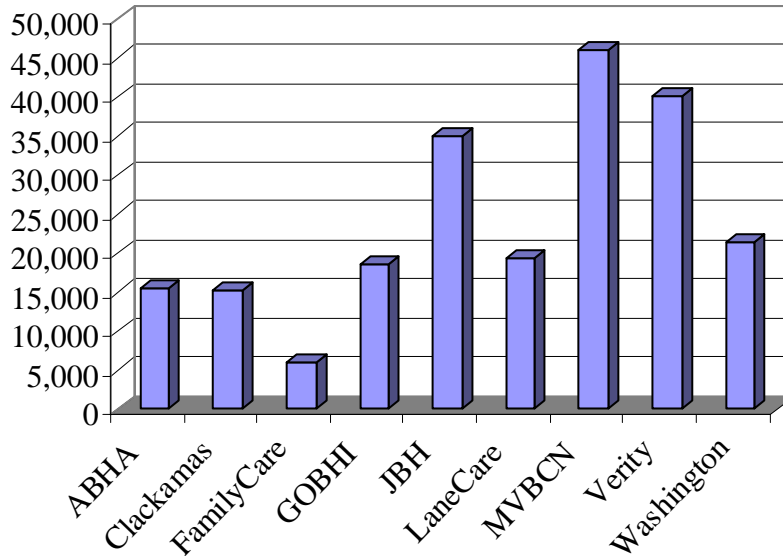
**CHILDREN AGE 0-17**



### ENROLLMENT

The use of Medicaid enrollment numbers will show the number of children who are able to obtain mental health services. The following enrollment numbers refer to the number enrolled at any point within the quarter.

**FIGURE 1: ENROLLMENT OF CHILDREN AGE 0-17 BY MHO: 2<sup>ND</sup> QTR 2007**



**TABLE 1: ENROLLMENT FOR CHILDREN AGE 0-17 BY MHO: ALL QUARTERS**

MHO	2006		2007	
	3 <sup>rd</sup> Qtr	4 <sup>th</sup> Qtr	1 <sup>st</sup> Qtr	2 <sup>nd</sup> Qtr
ABHA	15,702	15,300	15,186	15,552
Clackamas	15,204	14,664	14,897	15,220
FamilyCare	5,774	5,783	5,666	6,055
GOBHI	18,854	18,434	18,303	18,509
JBH	35,273	34,669	34,448	35,112
LaneCare	19,257	19,046	18,769	19,257
MVBCN	45,382	44,860	44,899	46,106
Verity	40,401	39,619	39,520	40,258
Washington	21,630	21,055	20,935	21,480
<b>Total</b>	<b>217,477</b>	<b>213,430</b>	<b>212,623</b>	<b>217,549</b>

# *ADMISSIONS*

**CHILDREN AGE 0-17**



## OUTPATIENT ADMISSIONS

For the purposes of this report, children age 0-17 are considered as having been “admitted” to an outpatient service if there has been no outpatient service in the previous 90 days.

**TABLE 2: OUTPATIENT ADMISSION RATE AMONG CHILDREN AGE 0-17 PER 1,000 ENROLLEES: BY MHO AND QUARTER**

MHO	2006		2007	
	3rd Qtr	4 <sup>th</sup> Qtr	1 <sup>st</sup> Qtr	2nd Qtr
ABHA	18.2	21.4	19.4	19.0
Clackamas	22.7	22.8	19.7	18.9
FamilyCare	22.5	16.6	18.5	18.0
GOBHI	19.5	21.3	21.0	19.3
JBH	19.3	19.3	21.1	20.6
LaneCare	24.7	24.3	25.4	23.4
MVBCN	17.9	18.3	18.3	20.5
Verity	18.0	17.4	18.6	15.7
Washington	16.5	16.9	17.0	15.2
<b>Total</b>	<b>19.2</b>	<b>19.4</b>	<b>19.7</b>	<b>19.0</b>

N=Number of new admissions within quarter D=number of enrollees within quarter/1000

## PSYCHIATRIC DAY TREATMENT SERVICES (PDTs) ADMISSIONS

For the purposes of this report, children age 0-17 are considered as having been “admitted” to PDTs service if there has been no PDTs service in the previous 30 days.

**TABLE 3: PDTs ADMISSIONS AMONG CHILDREN AGE 0-17: BY PROVIDER AND PAYOR TYPE BY QUARTER**

PDTs Provider/ Provider Number	MHO/FFS <sup>2</sup>	2006		2007		MHO vs. FFS*	% of Total Year Admissions**
		3 <sup>rd</sup> Qtr	4 <sup>th</sup> Qtr	1 <sup>st</sup> Qtr	2 <sup>nd</sup> Qtr		
Albertina Kerr	MHO	3	7	6	10	100%	5.5%
	FFS	0	0	0	0	0.0%	0.0%
Cascade Child Tx Center	MHO	2	2	3	11	100%	3.8%
	FFS	0	0	0	0	0.0%	0.0%
Child Center	MHO	8	5	4	6	95.8%	4.9%
	FFS	0	1	0	0	4.2%	0.2%

\*MHO vs. FFS: n=total of either MHO or FFS/d=total of PDTs Provider

\*\* % of Total Admissions: n=total of either MHO or FFS/d=total of all PDTs Admissions

<sup>2</sup> Fee-For-Service (FFS): Eligible for OHP and NOT enrolled with an MHO (open card).



**TABLE 3: PDTS ADMISSIONS AMONG CHILDREN AGE 0-17: BY PROVIDER AND PAYOR TYPE BY QUARTER (CONTINUED)**

PDTS Provider/ Provider number	MHO/FFS <sup>1</sup>	2006		2007		MHO vs. FFS*	% of Total Year Admissions**
		3 <sup>rd</sup> Qtr	4 <sup>th</sup> Qtr	1 <sup>st</sup> Qtr	2 <sup>nd</sup> Qtr		
Edgefield	MHO	15	12	10	15	98.1%	11.1%
	FFS	0	1	0	0	1.9%	0.2%
Family Friends	MHO	5	14	6	3	100%	6.0%
	FFS	0	0	0	0	0.0%	0.0%
Grande Ronde Child Center	MHO	2	3	3	1	100%	1.9%
	FFS	0	0	0	0	0.0%	0.0%
Klamath Child & Family	MHO	18	9	21	17	94.2%	13.9%
	FFS	2	0	1	1	5.8%	0.9%
Mid-Columbia CFC	MHO	8	1	5	2	88.9%	3.4%
	FFS	1	0	1	0	11%	0.4%
Morrison Center Hand to Hand - Tribal	MHO	0	0	0	0	0%	0.0%
	FFS	1	0	0	1	100%	0.4%
OHSU	MHO	8	4	2	8	88.0%	4.7%
	FFS	0	2	0	1	12.0%	0.6%
Olalla Center (Lincoln Co)	MHO	2	3	3	3	84.6%	2.3%
	FFS	1	1	0	0	15.4%	0.4%
Old Mill School	MHO	5	2	0	1	100%	1.7%
	FFS	0	0	0	0	0.0%	0.0%
Pacific Child Center	MHO	3	11	3	3	90.9%	4.3%
	FFS	1	0	1	0	9.1%	0.4%
Parry Center	MHO	5	1	3	1	83.3%	2.1%
	FFS	2	0	0	0	16.7%	0.4%
Polk Adolescent Day Tx	MHO	2	2	3	1	88.9%	1.7%
	FFS	0	0	0	1	11.1%	0.2%
Poyama Land	MHO	6	3	2	1	100%	2.6%
	FFS	0	0	0	0	0.0%	0.0%

MHO vs. FFS: n=total of either MHO or FFS/d=total of PDTS Provider

% of Total Admissions: n=total of either MHO or FFS/d=total of all PDTS Admissions

<sup>1</sup> Fee-For-Service (FFS): Eligible for OHP and NOT enrolled with an MHO (open card).

**TABLE 3: PDTS ADMISSIONS AMONG CHILDREN AGE 0-17: BY PROVIDER AND PAYOR TYPE BY QUARTER (CONTINUED)**

PDTS Provider/ Provider number	MHO/FFS <sup>1</sup>	2006		2007		MHO vs. FFS*	% of Total Year Admissions**
		3 <sup>rd</sup> Qtr	4 <sup>th</sup> Qtr	1 <sup>st</sup> Qtr	2 <sup>nd</sup> Qtr		
Riverside	MHO	5	8	22	15	90.9%	10.7%
	FFS	1	1	2	1	9.1%	1.1%
SOCSTC	MHO	6	2	13	7	100%	6.0%
	FFS	0	0	0	0	0.0%	0.0%
Tualatin Valley	MHO	7	11	12	7	97.4%	7.9%
	FFS	0	1	0	0	2.6%	0.2%
Totals	MHO Total	110	100	121	112	94.5%	
	FFS Total	9	7	5	5	5.5%	
	Grand Totals	119	107	126	117	100.0%	

MHO vs. FFS: n=total of either MHO or FFS/d=total of PDTS Provider

% of Total Admissions: n=total of either MHO or FFS/d=total of all PDTS Admissions

**TABLE 4: PDTS ADMISSIONS CHILDREN AGE 0-17: BY MHO AND QUARTER**

MHO/FFS	2006		2007	
	3 <sup>rd</sup> Qtr	4 <sup>th</sup> Qtr	1 <sup>st</sup> Qtr	2 <sup>nd</sup> Qtr
ABHA	9	7	6	16
Clackamas	20	6	9	10
FamilyCare	3	0	2	2
GOBHI	2	3	3	1
JBH	37	44	65	45
LaneCare	8	5	4	5
MVBCN	8	4	5	2
Verity	10	22	16	17
Washington	13	9	11	14
<b>Total</b>	<b>110</b>	<b>100</b>	<b>121</b>	<b>112</b>
FFS	9	7	5	5

<sup>1</sup> Fee-For-Service (FFS): Eligible for OHP and NOT enrolled with an MHO (open card).

## PSYCHIATRIC RESIDENTIAL TREATMENT SERVICES (PRTS) AND ASSESSMENT & EVALUATION (A&E) ADMISSIONS

For the purposes of this report, children age 0-17 are considered as having been “admitted” to A&E and/or PRTS service if there has been a break in service for 1 day or more. This data has been pulled from the Client Process Monitoring System (CPMS).

**TABLE 5: PRTS A&E ADMISSIONS: CHILDREN AGE 0-17 BY PROVIDER**

	2006		2007	
	3rd Qtr	4th Qtr	1st Qtr	2nd Qtr
Children’s Farm Home	25	24	23	24
Christie School	16	13	30	19
Pendleton Academy	14	11	18	12
SOASTC	13	12	12	10
<b>Total</b>	<b>68</b>	<b>60</b>	<b>83</b>	<b>65</b>

Data Source: CPMS 2006/2007

Data Pulled: 3/21/08

**TABLE 6: PRTS (NON-A&E) ADMISSIONS: CHILDREN AGE 0-17 BY PROVIDER**

	2006		2007	
	3rd Qtr	4th Qtr	1st Qtr	2nd Qtr
Albertina Kerr	5	4	12	15
Children's Farm Home	31	17	15	12
Christie School	36	27	25	21
Edgefield Children's	8	10	1	0
Pendleton Academy	7	1	7	7
Parry Center	16	12	8	18
Jasper Mountain	2	6	8	15
SOASTC	4	0	0	0
Trillium Central Or	6	5	6	6
<b>Total</b>	<b>115</b>	<b>82</b>	<b>82</b>	<b>94</b>

Data Source: CPMS 2006/2007

Data Pulled: 3/21/08

## STABILIZATION TRANSITION SERVICES (STS) ADMISSIONS

**TABLE 7: STS ADMISSIONS FOR CHILDREN AGE 0-17: FFS DATA ONLY**

STS Provider (FFS only)	2006		2007		% of Total Year STS Admissions
	3 <sup>rd</sup> Qtr	4 <sup>th</sup> Qtr	1 <sup>st</sup> Qtr	2 <sup>nd</sup> Qtr	
Children's Farm Home	3	4	2	4	76.5%
Christie School	2	0	0	0	11.8%
Pendleton Academies	1	0	0	0	5.9%
SOASTC	0	1	0	0	5.9%
<b>Totals</b>	<b>6</b>	<b>5</b>	<b>2</b>	<b>4</b>	<b>100.0%</b>

n=STS Provider Admissions/d=Total STS Admission

## SUB-ACUTE SERVICES ADMISSIONS

The Procedure code used to bill for “sub-acute services”, (H2013 - psychiatric health facility service, per Diem) is utilized by only a few youth and family providers.

**TABLE 8: SUB-ACUTE ADMISSIONS FOR CHILDREN AGE 0-17: BY MHO/FFS**

Sub-Acute Providers	MHO/FFS <sup>1</sup>	2006		2007		MHO vs. FFS	% of Total Year MHO/FFS Sub-Acute Admissions
		3 <sup>rd</sup> Qtr	4 <sup>th</sup> Qtr	1 <sup>st</sup> Qtr	2 <sup>nd</sup> Qtr		
Albertina Kerr	MHO	32	47	42	44	79.7%	67.6%
	FFS	13	8	15	6	20.3%	17.2%
Children’s Farm Home	MHO	1	2	1	2	50.0%	2.5%
	FFS	3	0	2	1	50.0%	2.5%
Christie Care	MHO	0	0	1	4	45.5%	2.0%
	FFS	0	0	0	6	54.5%	2.5%
Parry Center	MHO	1	2	3	1	50.0%	2.9%
	FFS	1	1	1	4	50.0%	2.9%
Total	MHO Total	34	51	47	51	75.0%	
	FFS Total	17	9	18	17	25.0%	
	GRAND	51	60	65	68	100%	

n=Sub-Acute Provider Admissions/d=Total Sub-Acute Admission

<sup>1</sup> Fee-For-Service (FFS): Eligible for OHP and NOT enrolled with an MHO (open card)

## SECURE CHILDREN INPATIENT PROGRAM (SCIP)/ SECURE ADOLESCENT INPATIENT PROGRAM (SAIP) ADMISSIONS

**TABLE 9: SCIP/SAIP ADMISSIONS FOR CHILDREN AGE 0-17 BY PROVIDER**

Program	2006		2007	
	3 <sup>rd</sup> Qtr	4 <sup>th</sup> Qtr	1 <sup>st</sup> Qtr	2 <sup>nd</sup> Qtr
SCIP	2	4	6	3

Program	2006		2007	
	3 <sup>rd</sup> Qtr	4 <sup>th</sup> Qtr	1 <sup>st</sup> Qtr	2 <sup>nd</sup> Qtr
SAIP	13	33	9	17

Data Source: CPMS 2006/2007

Data Pulled: 3/21/08

## ACUTE CARE ADMISSIONS FOR MENTAL HEALTH

**TABLE 10: ACUTE CARE MENTAL HEALTH ADMISSIONS FOR CHILDREN AGE 0-17  
PER 1,000 ENROLLED**

MHO	2006		2007	
	3 <sup>rd</sup> Qtr	4 <sup>th</sup> Qtr	1 <sup>st</sup> Qtr	2 <sup>nd</sup> Qtr
ABHA	0.19	0.20	0.53	0.06
Clackamas	0.33	0.68	0.47	0.72
FamilyCare	1.04	0.69	1.24	0.33
GOBHI	0.11	0.22	0.11	0.16
JBH	0.74	0.55	0.58	0.43
LaneCare	0.31	0.11	0.21	0.31
MVBCN	0.15	0.13	0.02	0.13
Verity	0.57	0.73	0.86	0.82
Washington	0.51	0.76	0.67	0.33
<b>Total</b>	<b>0.41</b>	<b>0.44</b>	<b>0.46</b>	<b>0.39</b>

*SERVICE  
PERCENTAGE  
RATES*

**FOR CHILDREN AGE 0-17**



## OUTPATIENT SERVICES

Service percentage rates are a way to measure the demand for service and/or ability to access services. The service percentage rate is the number of children receiving service within a time period out of the number of children with any enrollment during that time period (expressed as a %). See the Glossary of Terms at the end of this report for further information.

**TABLE 11: OUTPATIENT SERVICES PERCENTAGE RATE FOR CHILDREN AGE 0-17**

MHO	2006		2007	
	3 <sup>rd</sup> Qtr	4 <sup>th</sup> Qtr	1 <sup>st</sup> Qtr	2 <sup>nd</sup> Qtr
ABHA	4.5%	5.0%	5.0%	5.1%
Clackamas	4.6%	4.9%	4.9%	5.1%
FamilyCare	4.6%	4.6%	4.7%	4.4%
GOBHI	5.0%	5.2%	5.3%	5.3%
JBH	4.9%	5.2%	5.4%	5.8%
LaneCare	7.8%	8.0%	8.3%	8.6%
MVBCN	4.5%	4.7%	4.6%	4.8%
Verity	5.3%	5.4%	5.6%	5.7%
Washington	3.9%	4.2%	4.2%	4.1%
<b>Total</b>	<b>5.0%</b>	<b>5.2%</b>	<b>5.3%</b>	<b>5.5%</b>

n=Unique Served Children/d=Unique Enrolled Children

**TABLE 12: PDTS SERVICES PERCENTAGE RATE FOR CHILDREN AGE 0-17**

MHO	2006		2007	
	3 <sup>rd</sup> Qtr	4 <sup>th</sup> Qtr	1 <sup>st</sup> Qtr	2 <sup>nd</sup> Qtr
ABHA	0.06%	0.05%	0.04%	0.10%
Clackamas	0.14%	0.05%	0.07%	0.07%
FamilyCare	0.05%	0.00%	0.04%	0.03%
GOBHI	0.01%	0.02%	0.02%	0.01%
JBH	0.14%	0.16%	0.19%	0.14%
LaneCare	0.04%	0.03%	0.02%	0.03%
MVBCN	0.02%	0.01%	0.01%	0.00%
Verity	0.02%	0.06%	0.04%	0.04%
Washington	0.06%	0.04%	0.05%	0.07%
<b>Total</b>	<b>0.06%</b>	<b>0.05%</b>	<b>0.06%</b>	<b>0.05%</b>

n=Unique PDTS Served Children/d=Unique Enrolled Children

**TABLE 13: ACUTE CARE SERVICES PERCENTAGE RATE CHILDREN AGE 0-17: BY MHO AND QUARTER**

	2006		2007	
	3rd Qtr	4th Qtr	1st Qtr	2nd Qtr
ABHA	0.02%	0.02%	0.05%	0.01%
Clackamas	0.03%	0.07%	0.05%	0.07%
FamilyCare	0.10%	0.07%	0.12%	0.03%
GOBHI	0.01%	0.02%	0.01%	0.02%
JBH	0.07%	0.05%	0.06%	0.04%
LaneCare	0.03%	0.01%	0.02%	0.03%
MVBCN	0.02%	0.01%	0.00%	0.01%
Verity	0.06%	0.07%	0.09%	0.08%
Washington	0.05%	0.08%	0.07%	0.03%
<b>Total</b>	<b>0.04%</b>	<b>0.04%</b>	<b>0.04%</b>	<b>0.04%</b>

n=Unique Served Children/d=Unique Enrolled Children



***DAYS OF SERVICE  
& LENGTH OF  
STAY***

**FOR  
CHILDREN AGE 0-17**



## PSYCHIATRIC DAY TREATMENT SERVICES (PDTs)

An episode of PDTs care is said to have ended when 30 days have passed since the last PDTs service. The total days of service within an episode of PDTs care includes only those days that the child receives day treatment. See the Glossary of Terms located at the end of this report.

**TABLE 14: AVERAGE DAYS OF SERVICE WITHIN EPISODES OF PDTs CARE ENDING IN THE FIRST AND SECOND HALF OF 2006/07: BY PDTs PROVIDER (KEY: N/A=no discharges)**

		July 2006 through June 2007				Annual Avg
		July thru December		January thru June		
PDTs Provider	MHO/ FFS <sup>1</sup>	# Episodes Ending	Avg Days	# Episodes Ending	Avg Days	
Albertina Kerr	MHO	9	74.1	14	59.4	65.2
	FFS	1	70.0	0	N/A	70.0
Cascade Child Tx Center	MHO	5	249.8	14	164.0	186.6
	FFS	1	57.0	1	236.0	146.5
Child Center	MHO	17	99.5	10	223.3	145.4
	FFS	0	N/A	1	128.0	128.0
Edgefield	MHO	30	88.4	26	140.2	112.4
	FFS	1	5.0	0	N/A	5.0
Family Friends	MHO	21	20.2	7	60.0	30.2
	FFS	1	98.0	0	N/A	98.0
Grande Ronde Child Center	MHO	6	109.0	2	156.5	120.9
	FFS	0	N/A	1	228.0	228.0
Klamath Child & Family	MHO	24	58.7	36	81.4	72.3
	FFS	3	115.3	1	105.0	112.8
LifeWorks	MHO	9	87.7	6	126.3	103.1
	FFS	2	124.5	1	11.0	86.7
Mid-Columbia CFC	MHO	0	N/A	0	N/A	N/A
	FFS	0	N/A	1	282.0	282.0
Morrison Hand to Hand - Tribal	MHO	9	62.2	10	130.6	98.2
	FFS	2	69.0	2	38.0	53.5
OHSU	MHO	3	173.7	9	224.6	211.8
	FFS	0	N/A	2	1.0	1.0
Olalla Center (Lincoln Co)	MHO	1	19.0	3	176.3	137.0
	FFS	0	N/A	0	N/A	N/A
Old Mill School	MHO	13	27.6	6	68.3	40.5
	FFS	1	202.0	1	210.0	206.0

<sup>1</sup> Fee-For-Service (FFS): Eligible for OHP and NOT enrolled with an MHO (open card)

**TABLE 14: AVERAGE DAYS OF SERVICE WITHIN EPISODES OF PDTs (Continued)**

PDTs Provider	MHO/ FFS <sup>1</sup>	July 2006 through June 2007				Annual Avg LOS
		July thru December		January thru June		
		# Episodes Ending	Avg Days	# Episodes Ending	Avg Days	
Pacific Child Center	MHO	7	81.9	7	54.9	68.4
	FFS	2	23.5	0	N/A	23.5
Parry Center	MHO	6	153.2	2	158.5	154.5
	FFS	1	193.0	1	228.0	210.5
Polk Adolescent Day Tx	MHO	8	107.9	4	199.0	138.3
	FFS	0	N/A	0	N/A	N/A
Poyama Land	MHO	28	48.5	17	36.4	43.9
	FFS	2	58.0	5	111.4	96.1
Riverside Adolescent	MHO	19	34.3	7	42.9	36.6
	FFS	0	N/A	0	N/A	N/A
SOCSTC	MHO	21	92.4	17	98.6	95.2
	FFS	3	65.0	0	N/A	65.0
Total Avg Days of Service	MHO	236	73.3	197	110.6	90.3
	FFS	20	85.8	17	121.4	102.1

N/A=no discharges

**TABLE 15: PDTs PROVIDERS AVERAGE DAYS OF SERVICE FOR CHILDREN 0-17**

	July 2006 through June 2007				Annual Avg LOS
	July thru December		January thru June		
	# Episodes Ending	Avg Days	# Episodes Ending	Avg Days	
ABHA	9	198.8	26	186.4	189.6
Clackamas	21	68.6	22	103.9	86.7
FamilyCare	3	53.7	5	89.4	76.0
GOBHI	6	109.0	3	209.3	142.4
JBH	105	40.0	73	64.1	49.9
LaneCare	17	99.5	10	223.3	145.4
MVBCN	15	121.2	6	185.5	139.6
Verity	37	114.3	28	104.5	110.1
Washington	23	57.1	24	109.5	83.9
<b>Total</b>	<b>236</b>	<b>73.3</b>	<b>197</b>	<b>110.6</b>	<b>90.3</b>
FFS	20	85.8	17	121.4	102.1

<sup>1</sup> Fee-For-Service (FFS): Eligible for OHP and NOT enrolled with an MHO (open card)

**TABLE 16: PRTS A&E PROVIDERS AVERAGE LENGTH OF STAY FOR CHILDREN 0-17**

Provider	2006				2007				Annual	
	3 <sup>rd</sup> Qtr		4 <sup>th</sup> Qtr		1 <sup>st</sup> Qtr		2 <sup>nd</sup> Qtr		Annual Discharges	Annual Avg Days
	Discharges	Avg Days	Discharges	Avg Days	Discharges	Avg Days	Discharges	Avg Days		
Children' Farm Home	23	82.43	25	55.68	16	83.31	31	84.10	95	76.08
Christie School	17	90.82	14	62.07	19	46.47	29	66.90	79	66.28
Pendleton Academy	20	75.30	15	75.47	14	52.29	12	75.17	61	70.03
SOASTC	6	84.33	12	77.83	10	82.00	13	69.31	41	77.10
<b>Total</b>	<b>66</b>	<b>82.61</b>	<b>66</b>	<b>65.56</b>	<b>59</b>	<b>63.86</b>	<b>85</b>	<b>74.71</b>	<b>276</b>	<b>72.09</b>

Data Source: CPMS 2006/2007

Data Pulled: 3/21/08

**TABLE 17: PRTS PROVIDERS AVERAGE LENGTH OF STAY FOR CHILDREN 0-17**

Provider	2006				2007				Annual	
	3 <sup>rd</sup> Qtr		4 <sup>th</sup> Qtr		1 <sup>st</sup> Qtr		2 <sup>nd</sup> Qtr		Annual Discharges	Annual Avg LOS
	Discharges	Avg Days	Discharges	Avg Days	Discharges	Avg Days	Discharges	Avg Days		
Albertina Kerr	5	123.20	4	229.50	12	98.75	15	71.07	36	105.14
Children's Farm Home	31	76.90	17	66.47	15	115.67	12	124.17	75	89.85
Christie School	36	108.69	27	168.44	25	164.48	21	113.38	109	137.19
Edgefield Children's	8	146.63	10	117.20	1	26.00	0	N/A	19	124.79
Pendleton Academy	7	161.86	1	168.00	7	131.29	7	364.43	22	216.86
Parry Center	16	144.13	12	102.08	8	72.00	18	107.72	54	111.96
Jasper Mountain	2	91.50	6	71.17	8	80.38	15	90.73	31	84.32
SOASTC	4	85.75	0	N/A	0	N/A	0	N/A	4	85.75
Trillium Central Or	6	110.50	5	124.60	6	82.83	6	95.67	23	102.48
<b>Total</b>	<b>115</b>	<b>110.56</b>	<b>82</b>	<b>124.52</b>	<b>82</b>	<b>118.21</b>	<b>94</b>	<b>120.87</b>	<b>373</b>	<b>117.91</b>

Data Source: CPMS 2006/2007

Data Pulled: 3/21/08

## STABILIZATION TRANSITION SERVICES (STS) LENGTH OF STAY (LOS)

**TABLE 18: STS AVERAGE LOS FOR CHILDREN 0-17**

STS Provider	3 <sup>rd</sup> Qtr		4 <sup>th</sup> Qtr		1 <sup>st</sup> Qtr		2 <sup>nd</sup> Qtr		Annual Avg LOS
	D/C	Avg LOS	D/C	Avg LOS	D/C	Avg LOS	D/C	Avg LOS	
Children’s Farm Home	1	54.0	3	64.0	5	70.4	4	33.5	56.3
Christie School	2	16.5	0	N/A	0	N/A	0	N/A	16.5
Pendleton Academies	1	6.0	0	N/A	0	N/A	0	N/A	6.0
SOASTC	0	N/A	1	11.0	0	N/A	0	N/A	11.0
<b>Totals</b>	<b>4</b>	<b>23.3</b>	<b>4</b>	<b>50.8</b>	<b>5</b>	<b>70.4</b>	<b>4</b>	<b>33.5</b>	<b>46.0</b>

NA=No Discharges  
D/C=Discharges

## SUB-ACUTE SERVICES

**TABLE 19: SUB-ACUTE SERVICES AVERAGE LOS FOR CHILDREN 0-17**

Sub-Acute Providers	MHO/FFS <sup>1</sup>	2006				2007				Annual Avg LOS
		3 <sup>rd</sup> Qtr		4 <sup>th</sup> Qtr		1 <sup>st</sup> Qtr		2 <sup>nd</sup> Qtr		
		D/C	Avg LOS	D/C	Avg LOS	D/C	Avg LOS	D/C	Avg LOS	
Albertina Kerr	MHO	35	13.1	42	11.1	42	16.1	48	15.2	14.0
	FFS	15	17.9	7	12.9	15	13.5	8	16.6	15.4
Children’s Farm Home	MHO	1	31.0	2	32.0	1	21.0	2	23.5	27.2
	FFS	2	3.5	1	175.0	1	1.0	2	60.5	50.7
Christie Care	MHO	0	N/A	0	N/A	1	3.0	4	20.0	16.6
	FFS	0	N/A	0	N/A	0	N/A	6	17.0	17.0
Parry Center	MHO	1	39.0	2	31.5	2	19.5	2	13.0	23.9
	FFS	1	22.0	1	21.0	1	14.0	4	17.3	18.0
<b>Total</b>	<b>MHO</b>	<b>37</b>	<b>14.3</b>	<b>46</b>	<b>12.9</b>	<b>45</b>	<b>16.4</b>	<b>52</b>	<b>15.4</b>	<b>14.8</b>
	<b>FFS</b>	<b>18</b>	<b>16.5</b>	<b>9</b>	<b>31.8</b>	<b>17</b>	<b>12.8</b>	<b>14</b>	<b>23.1</b>	<b>19.4</b>

NA=no discharges  
D/C=discharges

<sup>1</sup> Fee-For-Service (FFS): Eligible for OHP and NOT enrolled with an MHO (open card)

## SECURE CHILDREN INPATIENT PROGRAM (SCIP)/ SECURE ADOLESCENT INPATIENT PROGRAM (SAIP) ADMISSIONS

**TABLE 20: SCIP/SAIP SERVICES AVERAGE LOS FOR CHILDREN 0-17**

	2006				2007				Annual Avg LOS
	3 <sup>rd</sup> Qtr		4 <sup>th</sup> Qtr		1 <sup>st</sup> Qtr		2 <sup>nd</sup> Qtr		
	D/C	Avg LOS	D/C	Avg LOS	D/C	Avg LOS	D/C	Avg LOS	
SCIP	3	236.0	0	N/A	10	285.0	9	372.2	314.0
SAIP	15	78	9	108.4	16	109.9	29	98.3	97.9

Data Source: CPMS                      n=total days/d=discharges  
Date Pulled: 3/12/08                  D/C=discharges



## ACUTE CARE MENTAL HEALTH SERVICES

**TABLE 21: ACUTE CARE MENTAL HEALTH SERVICES AVERAGE LOS**

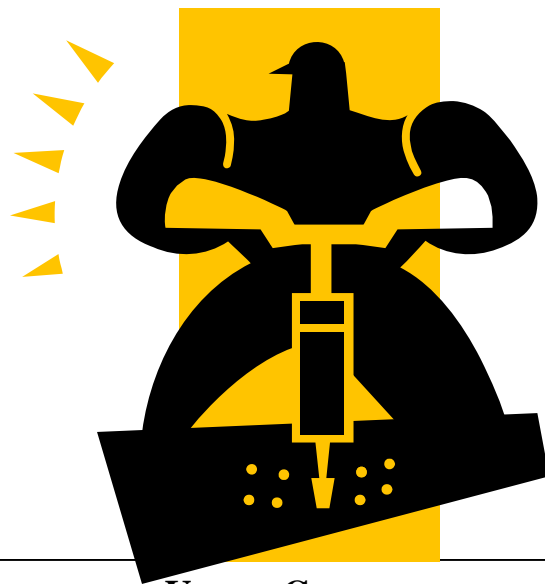
MHO Contractors	2006				2007				Annual Avg LOS
	3 <sup>rd</sup> Qtr		4 <sup>th</sup> Qtr		1 <sup>st</sup> Qtr		2 <sup>nd</sup> Qtr		
	D/C	Avg LOS	D/C	Avg LOS	D/C	Avg LOS	D/C	Avg LOS	
ABHA	4	6.8	4	8.0	7	5.4	2	7.0	6.5
Clackamas	5	15.0	8	8.8	9	8.3	10	9.2	9.8
FamilyCare	6	9.0	5	6.4	7	6.9	2	6.5	7.4
GOBHI	1	5.0	4	9.0	3	5.7	3	8.7	7.6
JBH	21	10.1	25	8.2	18	9.0	13	6.7	8.7
LaneCare	7	11.6	2	7.0	4	8.8	6	7.7	9.3
MVBCN	8	11.8	5	5.4	2	12.0	6	9.5	9.6
Verity	23	7.3	24	6.4	34	9.3	39	9.9	8.6
Washington	10	9.0	15	9.3	15	10.3	7	12.3	10.0
<b>Total</b>	<b>85</b>	<b>9.5</b>	<b>92</b>	<b>7.7</b>	<b>99</b>	<b>8.8</b>	<b>88</b>	<b>9.2</b>	<b>8.8</b>

D/C=discharges

# *READMISSION TO SERVICES*

FOR  
CHILDREN AGE 0-17





**UNDER CONSTRUCTION**



***DISTRIBUTION OF  
COMMUNITY  
BASED SERVICES***

**FOR  
CHILDREN AGE 0-17**

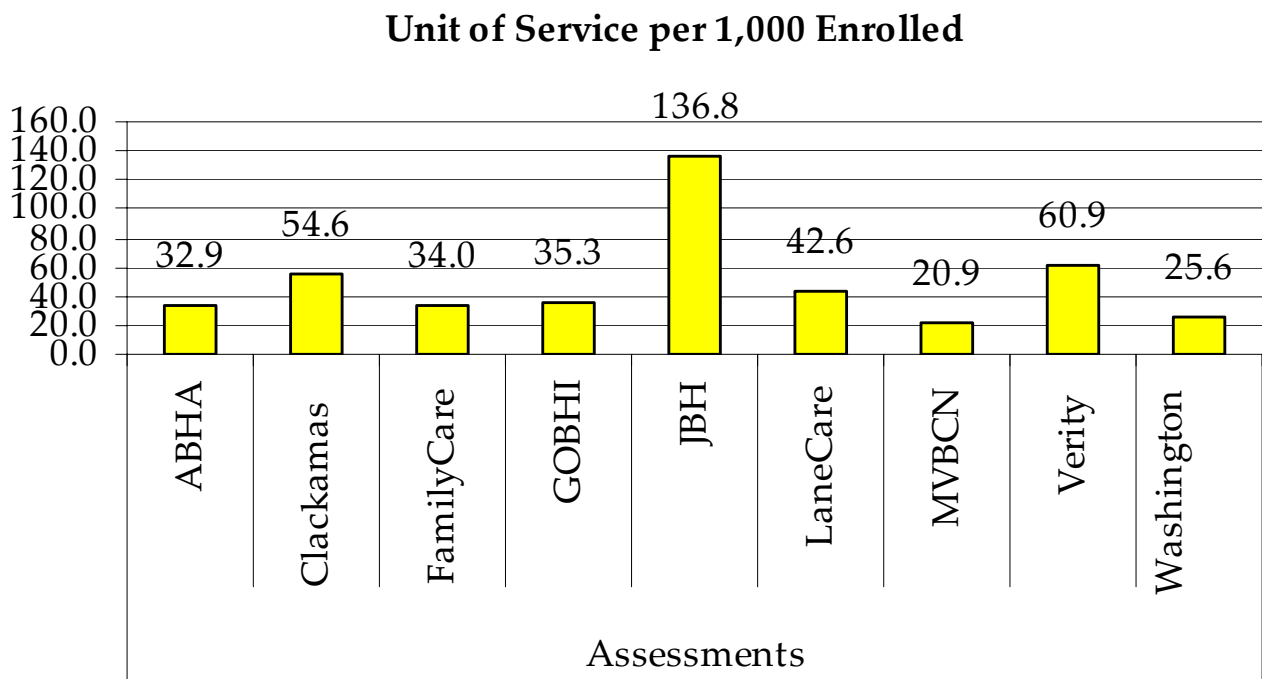


The Distribution of Services formerly looked at the number of encounters (i.e. the number of times a member received a particular service) rather than the “units” of service (i.e. 15 minutes, 30 minutes, or 1 day) due to the unequivocal units across the different types of service. In this report, however, the distribution of services will be reflected as “units” of service with the equal application of one (1) unit of service equaling 15 minutes. Thus 1 day of service will equal 96 units; 1 month of service will equal 2880 units of service. See the Service Category Glossary for the specific number of units for each of the procedure codes.

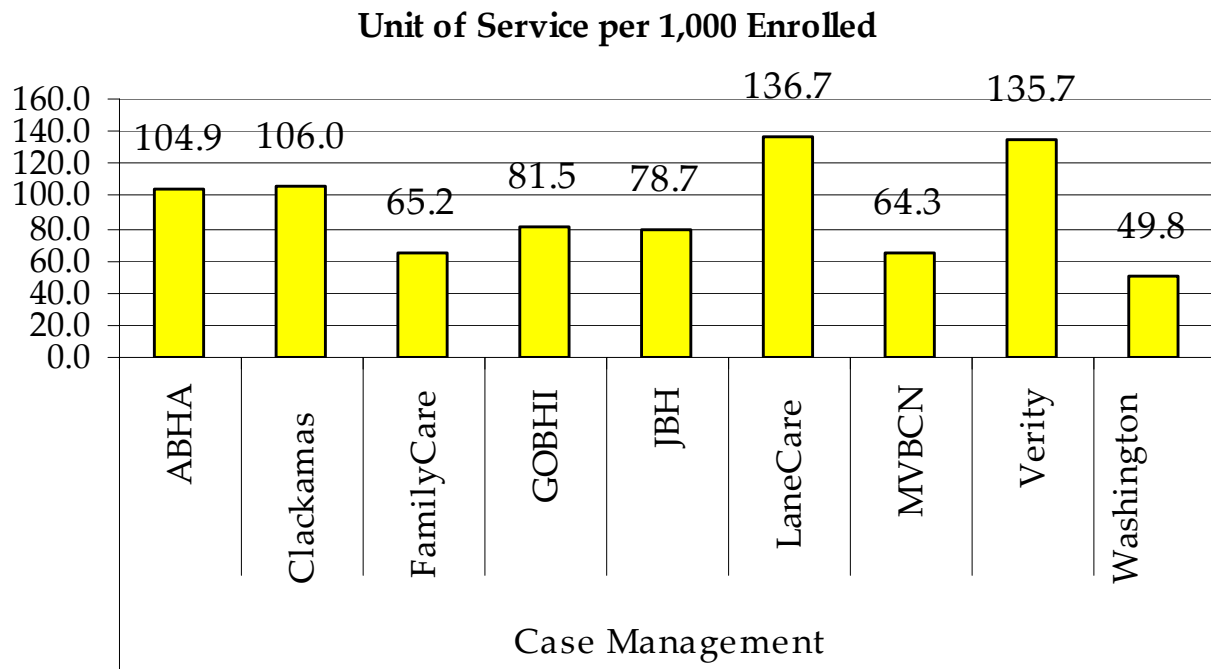
For a listing of the Mental Health Medicaid Procedure Codes and Reimbursement Rates, please click on the following link:

<http://www.oregon.gov/DHS/mentalhealth/publications/main.shtml> then scroll down to find the current list of codes.

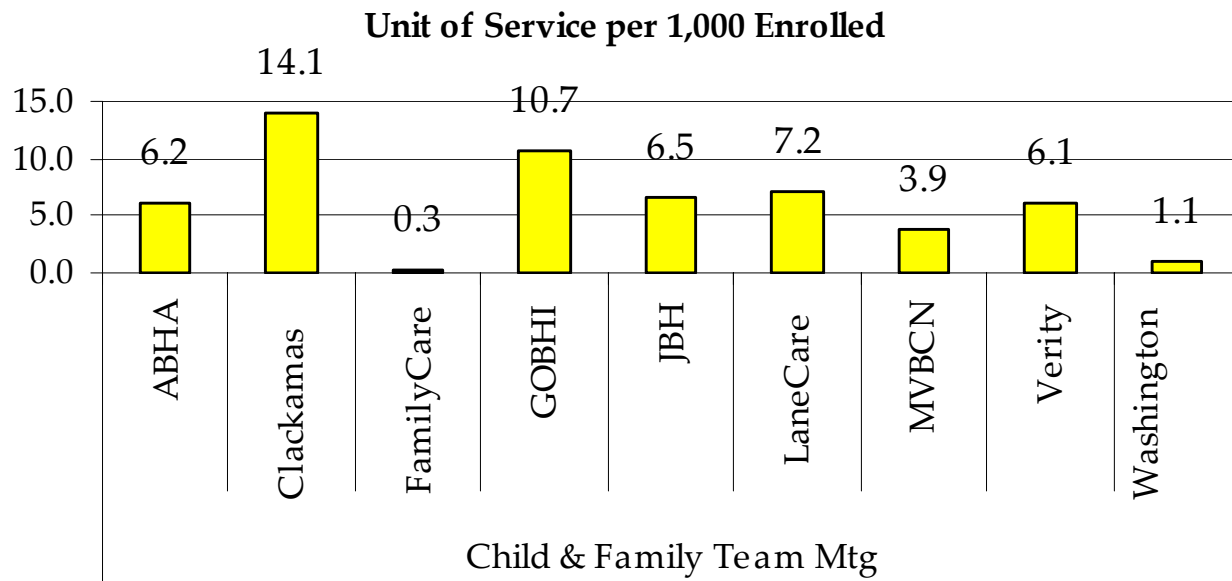
**FIGURE 2: ASSESSMENTS BY MHO: 2<sup>ND</sup> QTR 2007 – CHILDREN 0-17**



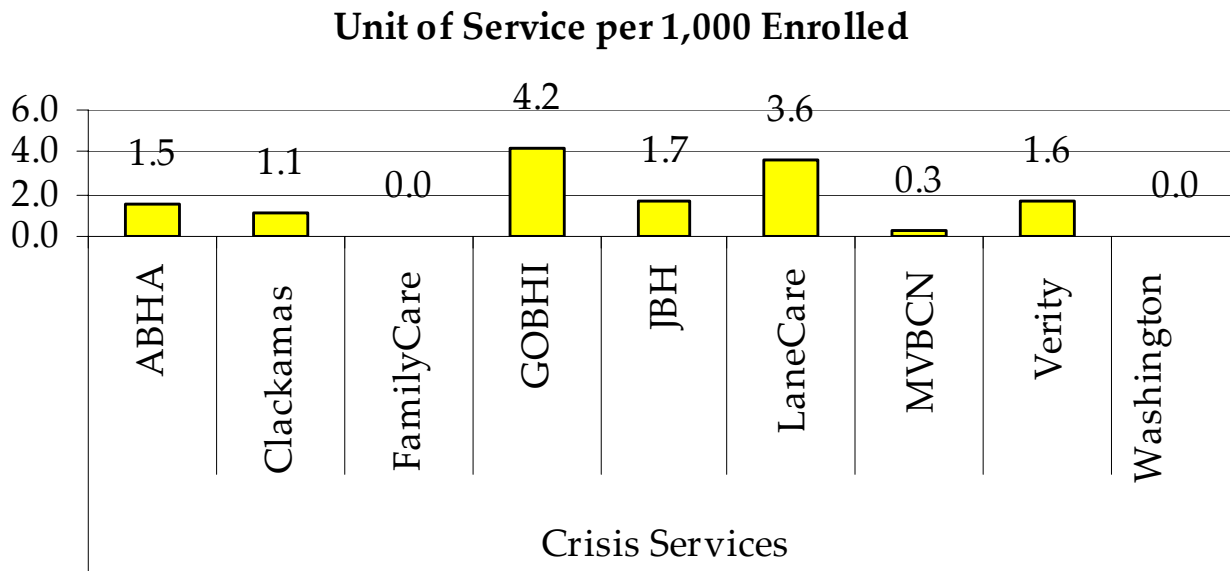
**FIGURE 3: CASE MANAGEMENT BY MHO: 2<sup>ND</sup> QTR 2007 – CHILDREN 0-17**



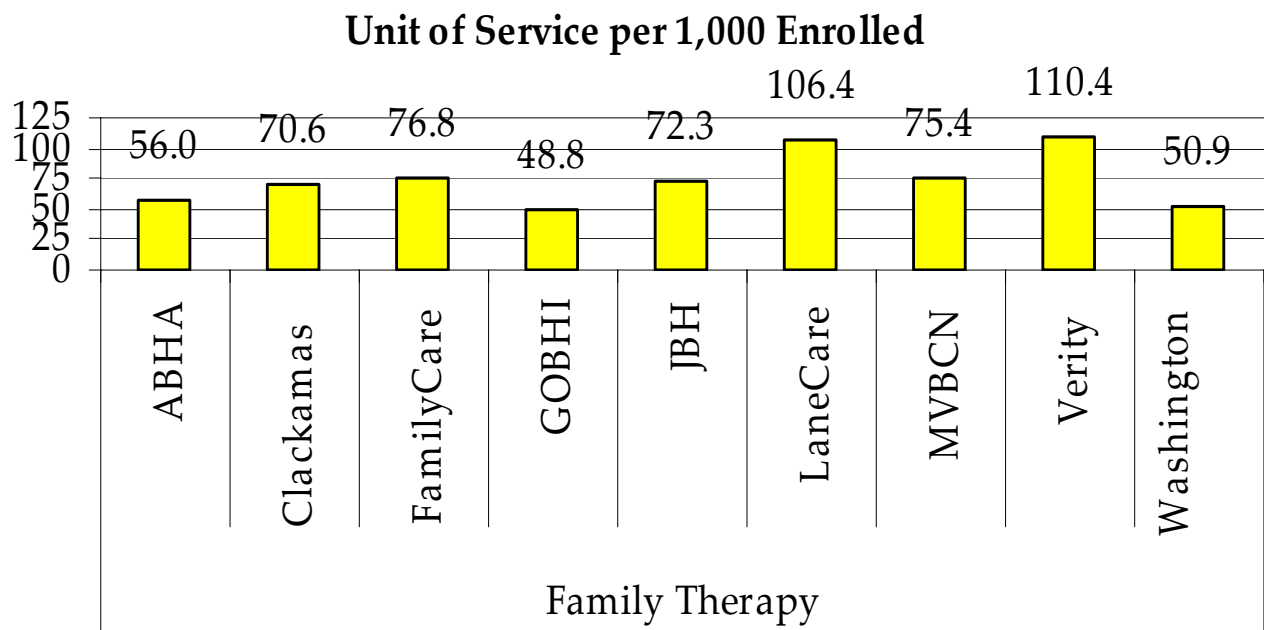
**FIGURE 4: CHILD & FAMILY TEAM MEETING BY MHO: 2<sup>ND</sup> QTR 2007 – CHILDREN 0-17**



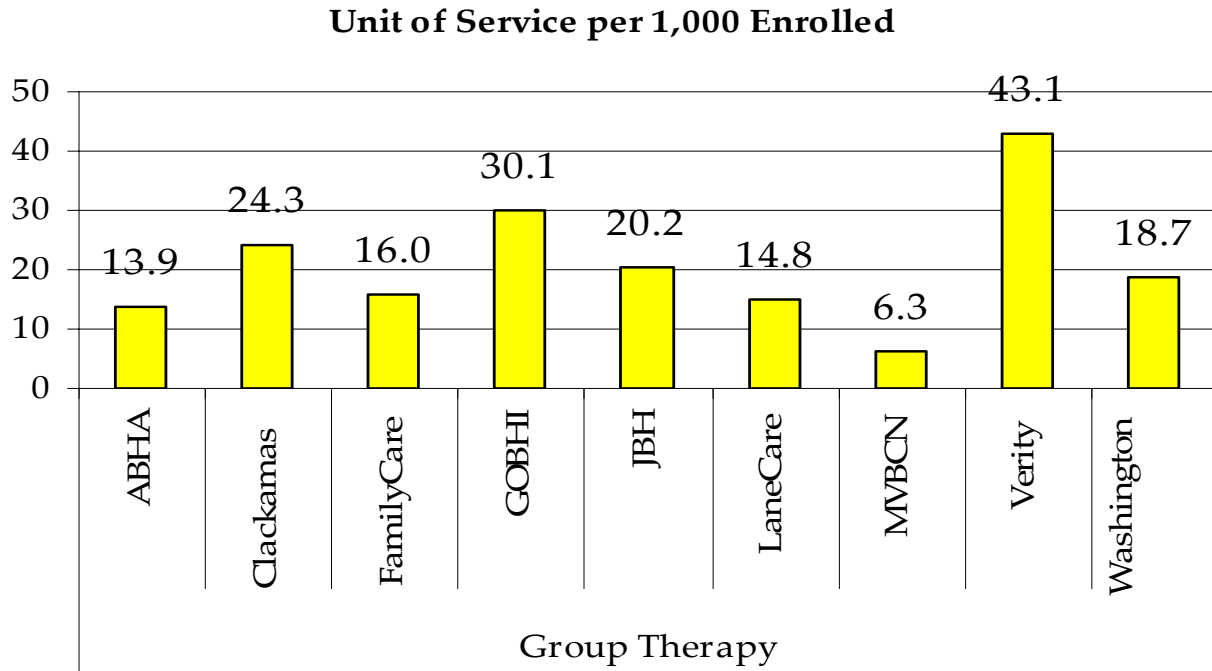
**FIGURE 5: CRISIS SERVICES BY MHO: 2<sup>ND</sup> QTR 2007 – CHILDREN 0-17**



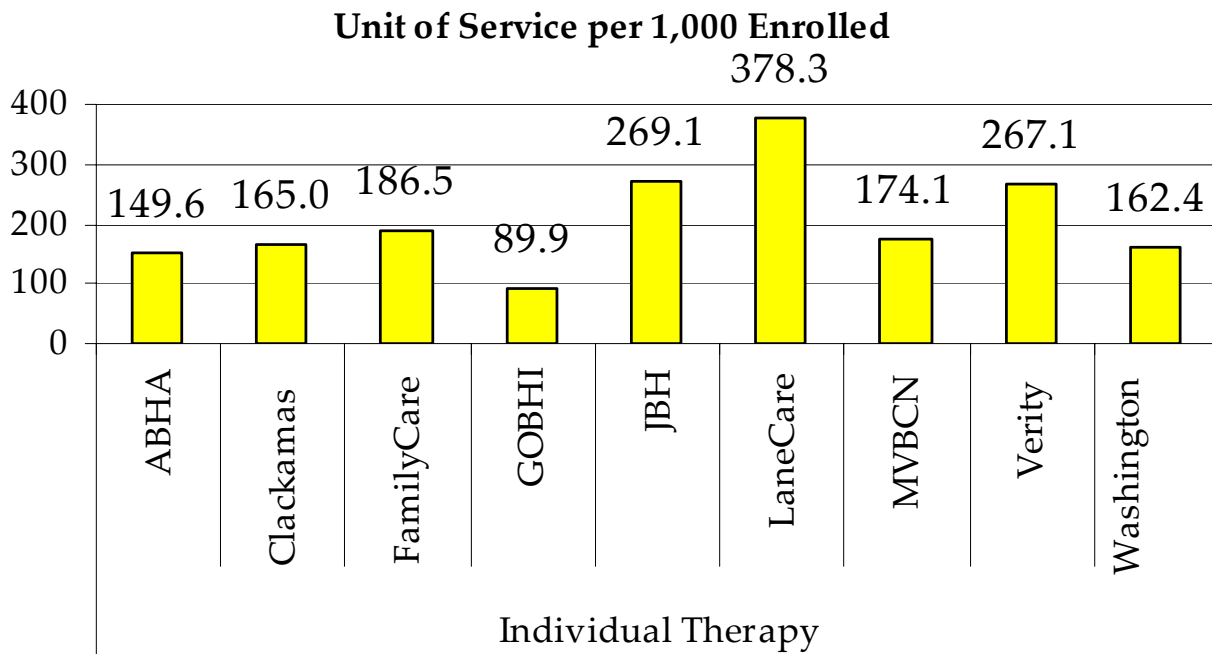
**FIGURE 6: FAMILY THERAPY BY MHO: 2<sup>ND</sup> QTR 2007 – CHILDREN 0-17**



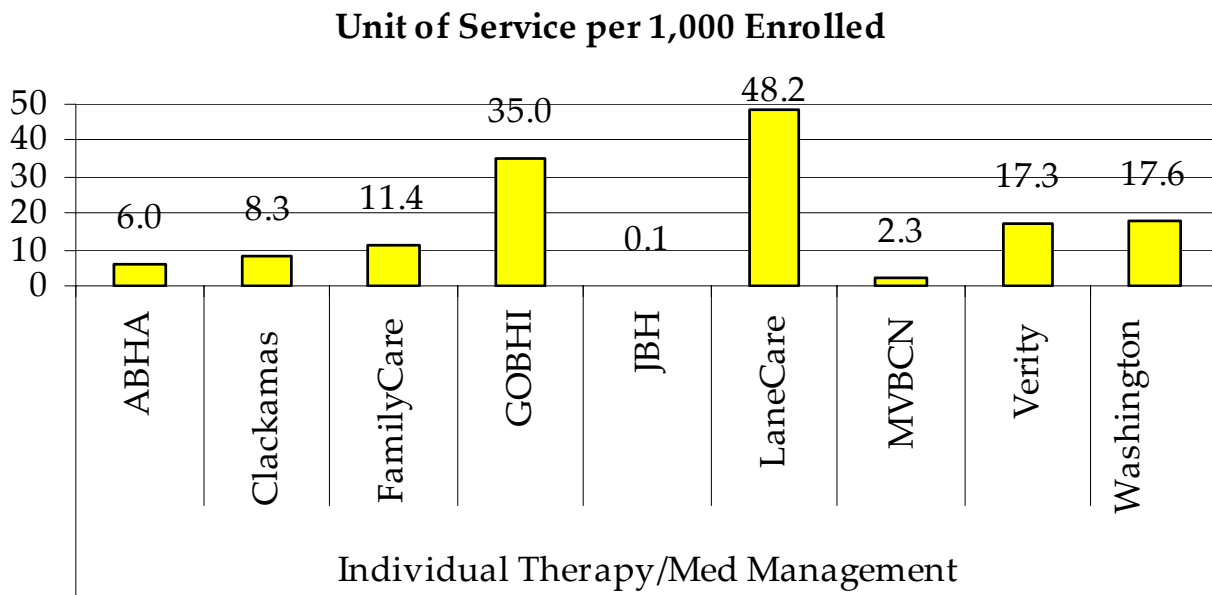
**FIGURE 7: GROUP THERAPY BY MHO: 2<sup>ND</sup> QTR 2007 – CHILDREN 0-17**



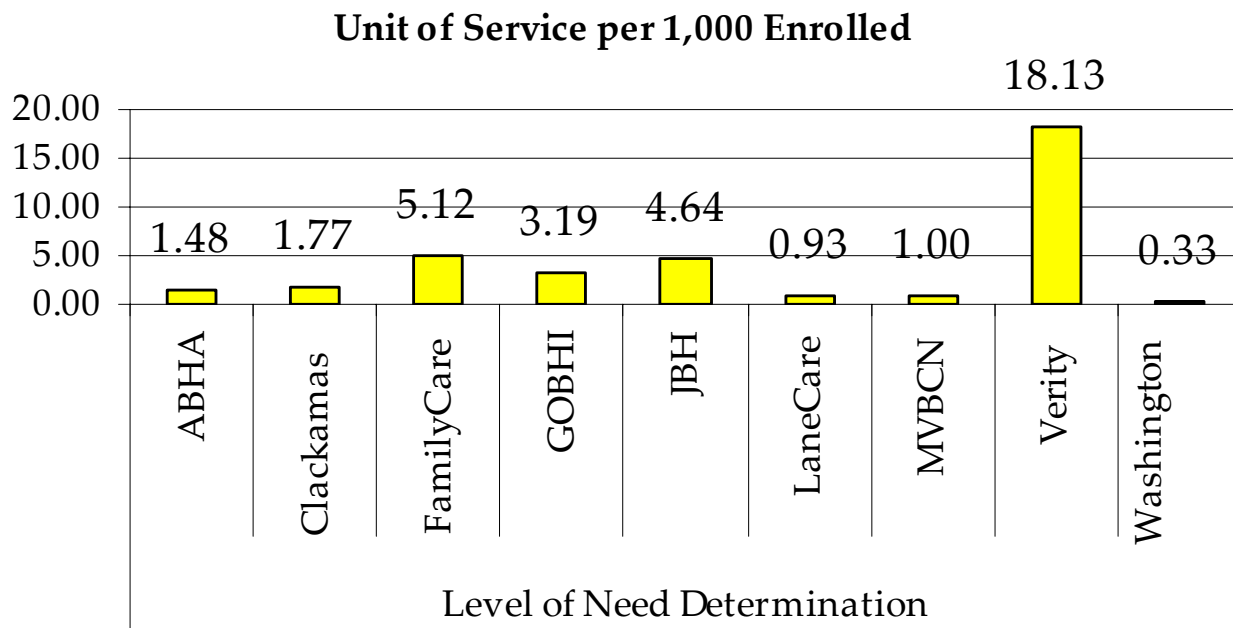
**FIGURE 8: INDIVIDUAL THERAPY BY MHO: 2<sup>ND</sup> QTR 2007 – CHILDREN 0-17**



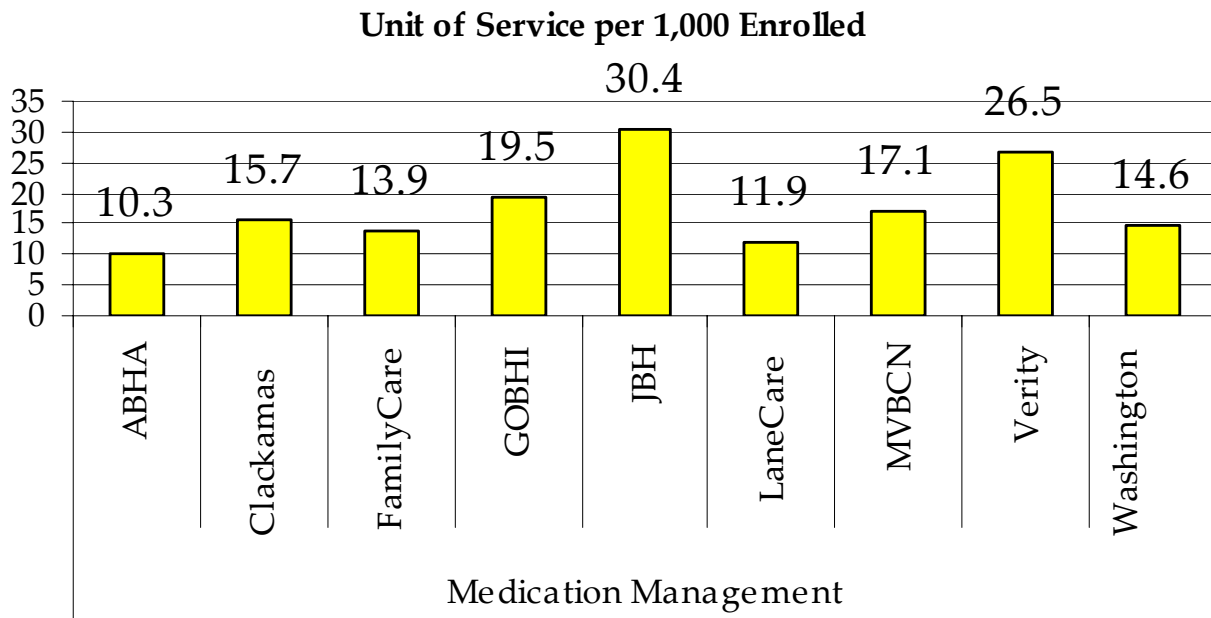
**FIGURE 9: INDIVIDUAL THERAPY WITH MEDICATION MANAGEMENT BY MHO:  
2<sup>ND</sup> QTR 2007 – CHILDREN 0-17**



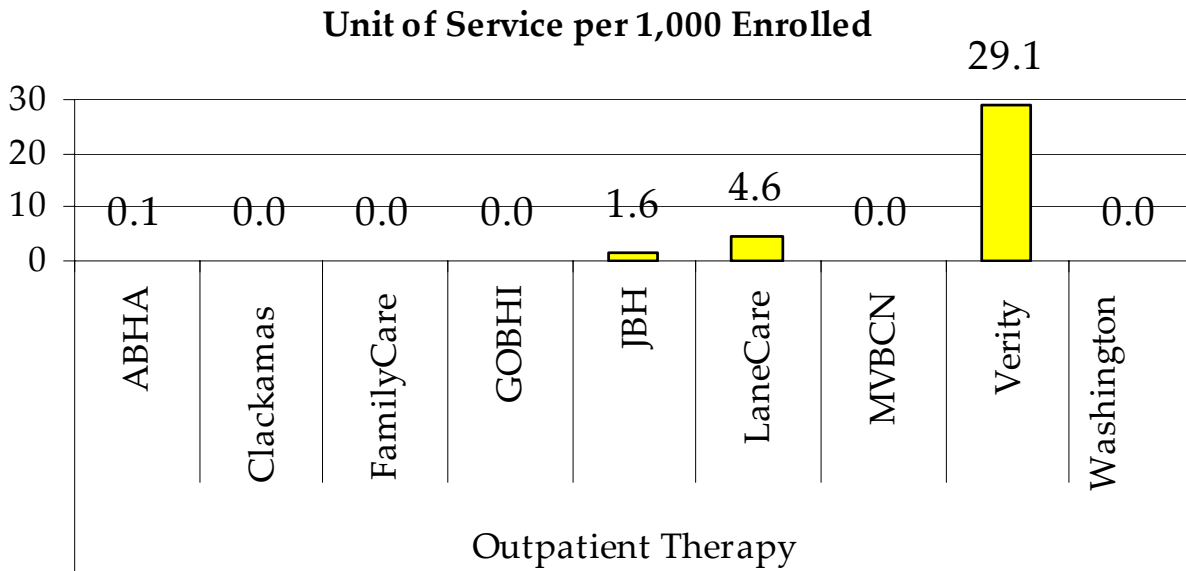
**FIGURE 10: LEVEL OF NEED DETERMINATION BY MHO: 2<sup>ND</sup> QTR 2007 –  
CHILDREN 0-17**



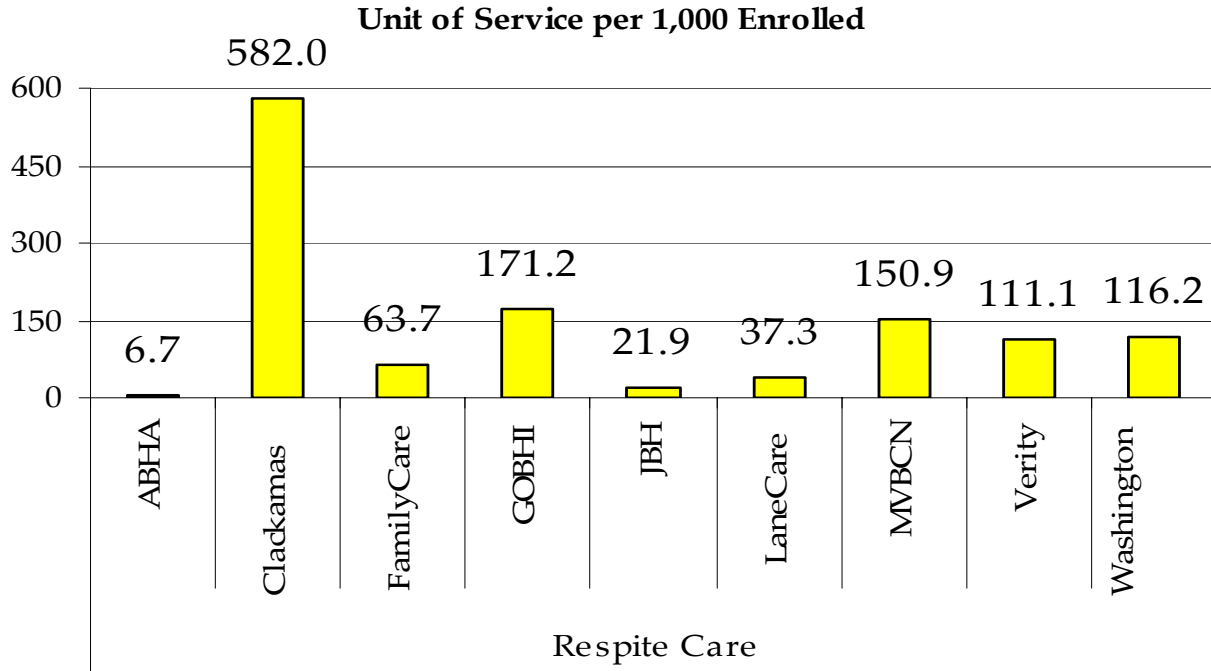
**FIGURE 11: MEDICATION MANAGEMENT BY MHO: 2<sup>ND</sup> QTR 2007 – CHILDREN 0-17**



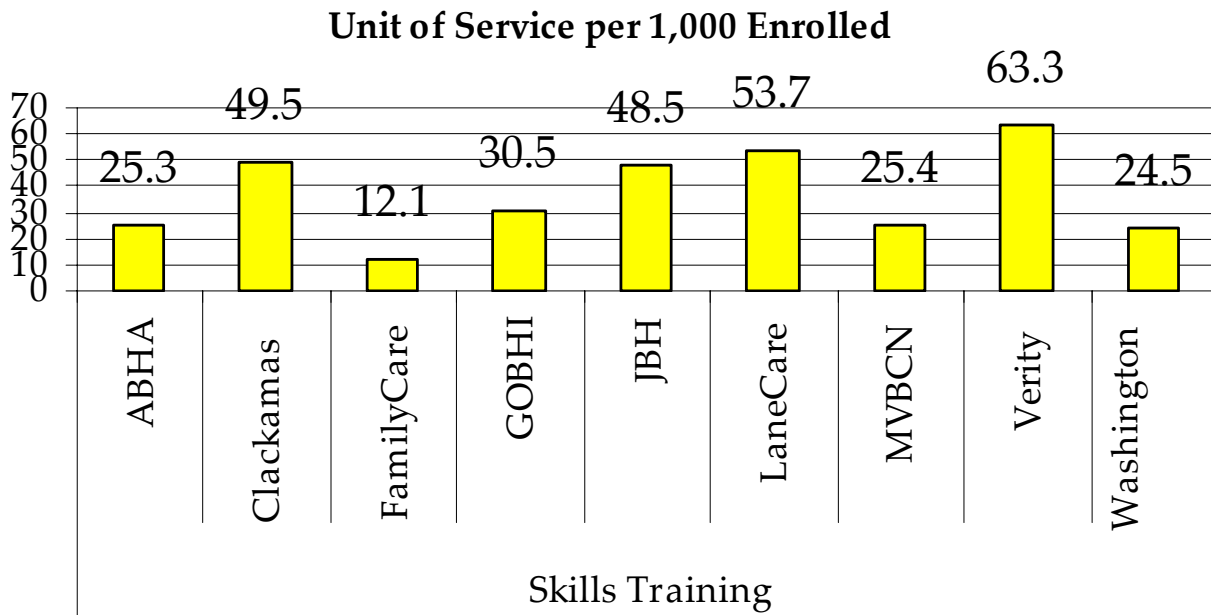
**FIGURE 12: OUTPATIENT THERAPY BY MHO: 2<sup>ND</sup> QTR 2007 – CHILDREN 0-17**



**FIGURE 13: RESPITE SERVICES BY MHO: 2<sup>ND</sup> QTR 2007 – CHILDREN 0-17**

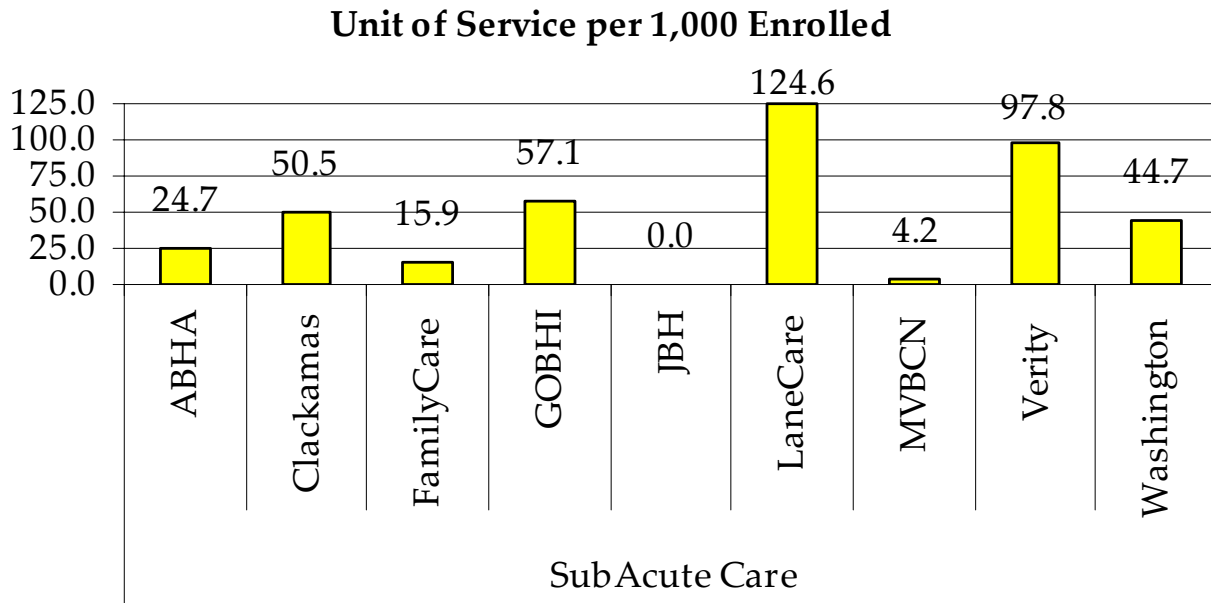


**FIGURE 14: SKILLS TRAINING BY MHO: 2<sup>ND</sup> QTR 2007 – CHILDREN 0-17**

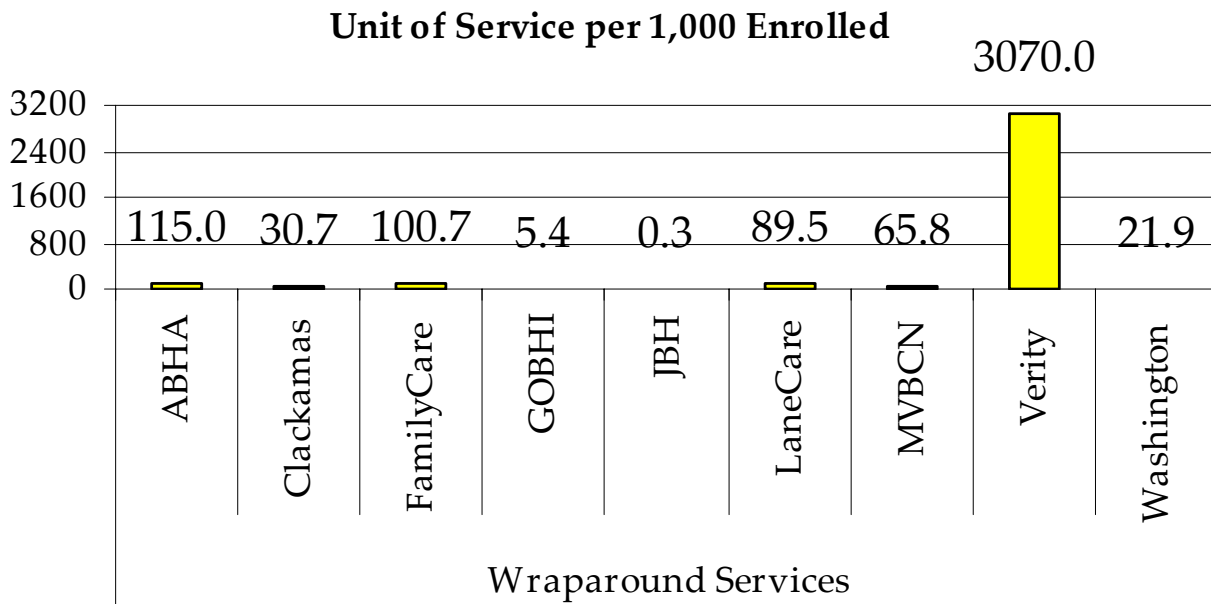




**FIGURE 15: SUB-ACUTE SERVICES BY MHO: 2<sup>ND</sup> QTR 2007 – CHILDREN 0-17**



**FIGURE 16: WRAP AROUND SERVICES BY MHO: 2<sup>ND</sup> QTR 2007 – CHILDREN 0-17**



# ***GLOSSARIES***



## GLOSSARY OF TERMS

### Acute Care Services:

Services delivered to children experiencing acute psychiatric conditions including 24-hour crisis assistance, community-based respite care, sub-acute psychiatric care and inpatient services.

### Addiction and Mental Health Division (AMHD):

A Division of DHS responsible for the administration of addiction and mental health services for the State of Oregon.

### Admissions:

Admission numbers reflect the unique admission of a child/children into a specific service (outpatient, PDTS, etc.). The rate of admissions is one measure of demand for service and/or ability to access services.

### Average Days of Service (ADOS):

The ADOS is based on the total number of days a child/children are in Psychiatric Day Treatment Services (PDTS). An episode of PDTS is defined as beginning on the first day of PDTS preceded by 30 or more days without PDTS. The ADOS is the total days of service across all episodes of service, divided by the number of service episodes.

### Average Length of Stay (ALOS):

The ALOS is based on the total days of service divided by the unique members served.

### Client Process Monitoring System (CPMS):

Database to monitor and track community services.

### Encounter:

A contact or an admission into mental health services provided to specific child/children.

## GLOSSARY OF TERMS

*(Continued)*

### Enrolled (Enrollee):

An individual that is eligible for the Oregon Health Plan (OHP) and enrolled in an MHO.

### Fee-For-Service (FFS):

Individuals who are eligible for the OHP, but are not enrolled with an MHO. This is also known as fee-for-service (FFS) or an “open card”.

### Mental Health Organization (MHO):

A Prepaid Health Plan under contract with DHS to provide Covered Services under the OHP Medicaid Demonstration Project and State Children's Health Insurance Program (SCHIP). MHOs can be FCHPs, CMHPs, private MHOs or combinations thereof.

### Oregon Health Plan (OHP):

Oregon's health care reform effort consisting of a Medicaid Demonstration Project, State Children's Health Insurance Program, an individual insurance program for persons excluded from health insurance coverage due to pre-existing health conditions, and a group insurance program for small businesses. One objective of this reform effort includes universal coverage for Oregonians. In the context of this report, OHP refers to all individuals on FFS.

### Outpatient Services:

The array of outpatient services includes: mental health assessments; co-occurring disorder assessments; individual and group therapy; medication management; parent training; case management and care coordination; crisis intervention; consultation to schools and other agencies; flexible services; specialized support service to families; and skills training. Outpatient services do NOT include day treatment.

## GLOSSARY OF TERMS

*(Continued)*

### Percentage Rate:

This is a general measure of access, but more related to utilization of services. It is a percentage calculated by summing the unique enrollees seen during a given time period and dividing that number by the total enrollees for that time period. For example, if there is 10,000 enrollees statewide in a given month and during that same month 500 of those enrollees receive services, the percent of enrollees served is 5%.

### Psychiatric Day Treatment Services (PDTs):

PDTs are comprehensive, interdisciplinary, non-residential community-based programs consisting of psychiatric treatment, family treatment and therapeutic activities integrated with an accredited education program.

### Psychiatric Residential Treatment Services (PRTS):

PRTS is an away from home, residential facility based psychiatric treatment that occurs in a nationally accredited and state certified facility and includes assessment and evaluation, regular residential and sub-acute care.

### Secure Adolescent Inpatient Program (SAIP):

Beginning in January 2005, this program provides highly specialized intensive mental health services to children between the ages of 14-17, including crisis admits from the Oregon Youth Authority (OYA) and youth served under the Psychiatric Security Review Board (PSRB). SAIP is a secure 24-hour medically monitored service in the community operated by Trillium Family Services.

## GLOSSARY OF TERMS

*(Continued)*

### Secure Children's Inpatient Program (SCIP):

Beginning in March 2002, this program provides highly specialized intensive mental health services to children under the age of 13. SCIP is a secure 24-hour medically monitored service in the community operated by Trillium Family Services.

### Service Category:

Service category is a descriptive grouping of service codes (BA, ECC, and CPT) that are similar procedurally.

### Sub-Acute Care:

Psychiatric treatment under the clinical direction of a psychiatrist as an alternative to hospitalization for children who are not in the most acute phase of a mental condition, but who require a level of care higher than generally provided in a residential psychiatric treatment setting.

### Unique Served:

Unduplicated number of individuals receiving mental health services.

### Unique Encounters:

Unduplicated services received by an individual(s) within a specific time period. One individual may have had several services provided – each service would be part of the calculations.

### Unit of Service:

A unit of service, for the purposes of this report, is an equal application of one (1) unit of service equaling 15 minutes. Thus 1 day of service will equal 96 units; 1 month of service will equal 2880 units of service.

## GLOSSARY OF SERVICE CATEGORIES

Each of the procedure codes have been listed under each of their respective categories of service. The number in parentheses that follow each of the procedure codes is the number of 15 minute units of service. Not all of the categories are recognized in the previous section of the report due to the low use rate.

### Assertive Community Treatment:

H0039 (1)

### Assessment & Evaluation:

90801 (1); 90802 (4); 90887 (1); 96100 (4); 96101 (4); 99213 (1); 99222 (96); 99223 (96); 99231 (96); 99232 (96); 99233 (96); 99238 (2); 99239 (3); H0002 (1); H0031 (1)

### Case Management:

90882 (1); T1016 (1)

### Child & Family Team Meetings:

H0032 (1)

### Consultation:

99244 (1); 99252 (1); 99254 (1)

### Crisis Services:

H2011 (1); S9484 (4)

### Day Treatment:

H0037 (96); H2012 (4)

### Family Therapy:

90846 (1); 90847 (1); 90849 (1)

### Group Therapy:

90853 (1); 90857 (1)

### Individual Therapy:

90804 (2); 90806 (3); 90808 (6); 90810 (2); 90812 (3); 90814 (6); H0004

### Individual Therapy with Medication Management:

90805 (2); 90807 (3); 90809 (6); 90811 (2); 90813 (3); 90815 (6)

## **GLOSSARY OF SERVICE CATEGORIES**

*(Continued)*

Interpretive Services:

T1013 (1)

Level of Need Determination:

T1023 (1)

Medication Management:

90862 (1); H0033 (1); H0034 (1); H2010 (1)

MST (Multi-Systemic Therapy for Juveniles):

H2033 (1)

Outpatient Therapy:

H0036 (1); H2023 (1)

PRTS – A & E:

H0018 (96)

PRTS – Residential:

H0019 (2880)

Respite Care:

H0045 (96); S5151 (96); S9125 (96); T1005 (1)

Skills Training:

G0176 (3); G0177 (3); H2014 (1); H2032 (1)

Sub-Acute Care:

H2013 (96)

Treatment Foster Care:

S5145 (96); S5146 (2880)

Wraparound Services:

H0038 (1); H2021 (1); H2022 (96); H2027 (1)