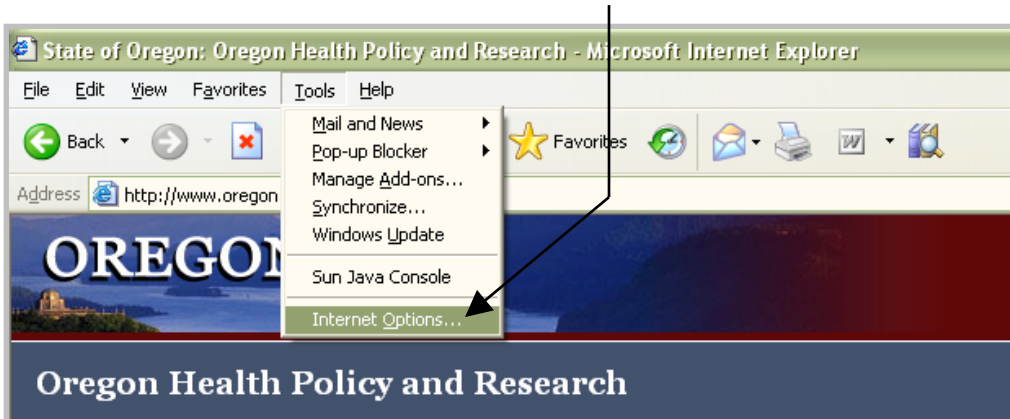


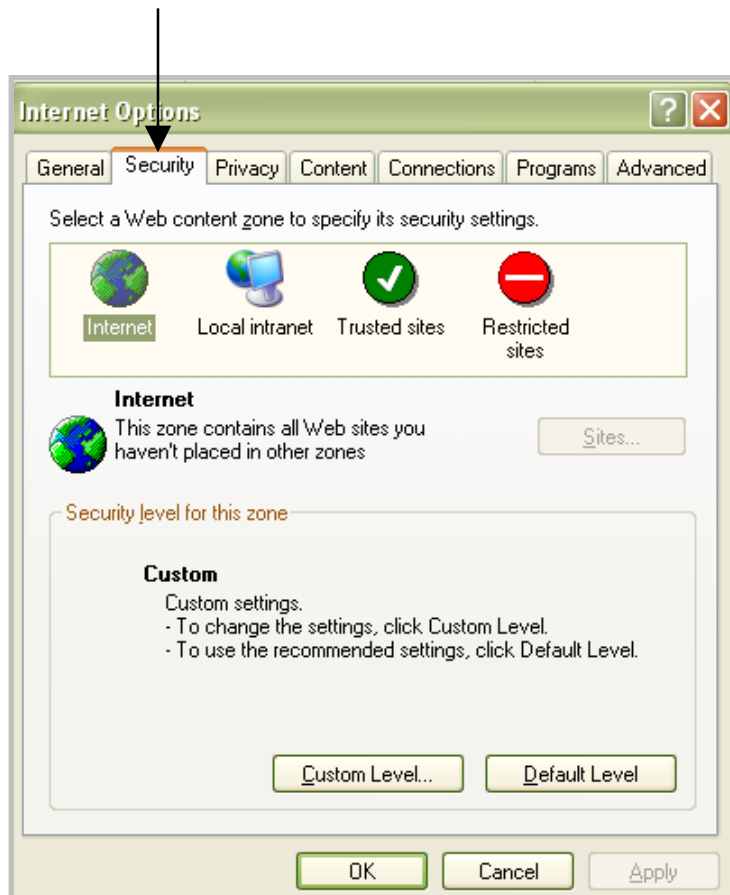
Adding NHSN to Internet Explorer's Trusted Sites

A typical case is shown. Your computer or web browser may be different.

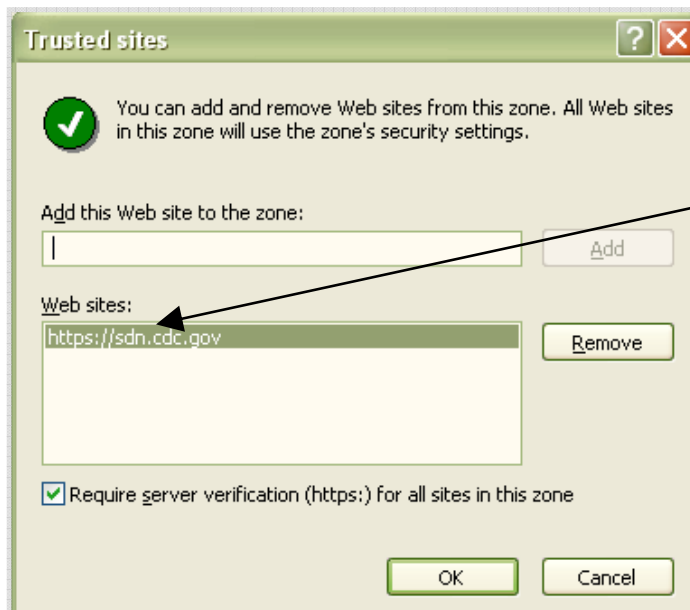
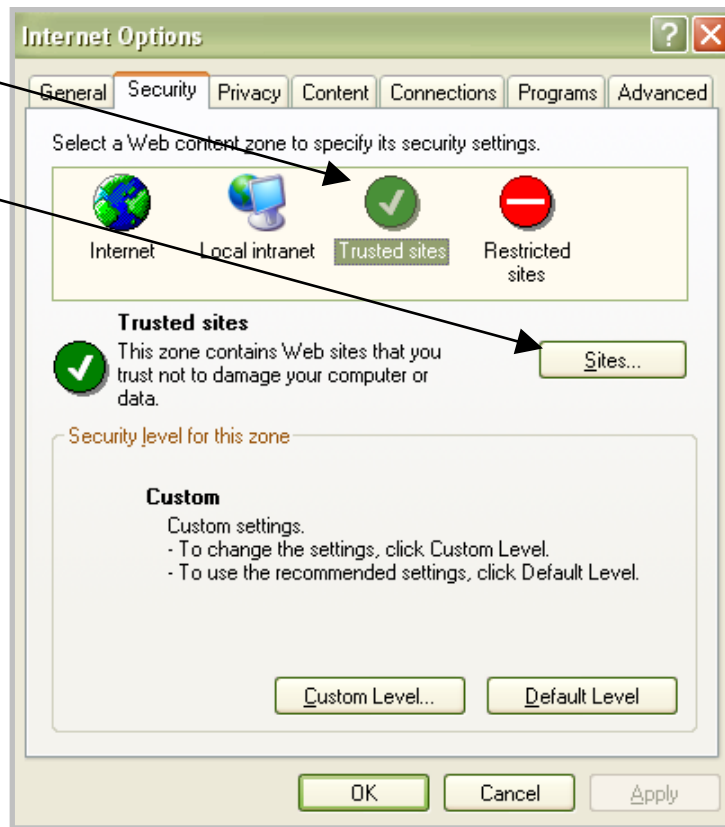
1. Start Internet Explorer.
2. From the **Tools** menu click on **Internet Options...**



3. Click on the **Security** tab.



4. Click the [Trusted sites](#) icon.
5. Click the [Sites...](#) button.

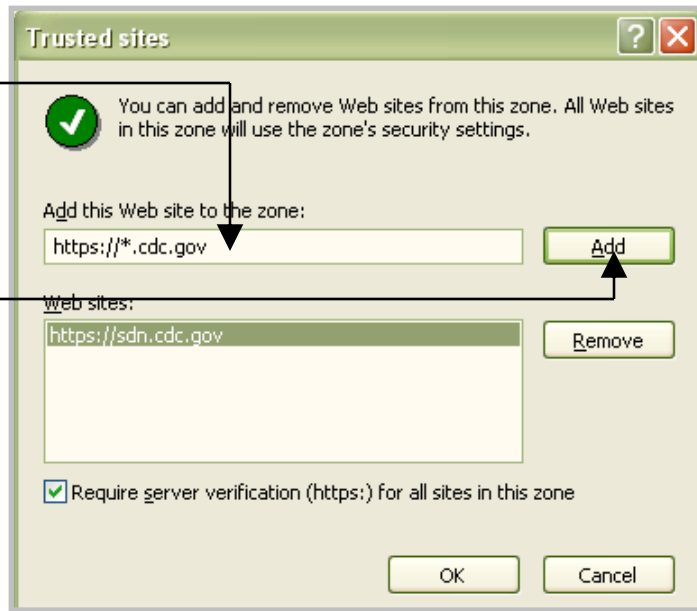


6. The [Trusted sites](#) dialog box will open. There may or may not be web sites already listed here; either is OK. Check the trusted [Web sites](#) list for the following: https://*.cdc.gov

If this web site is already listed, then stop here and press the [Cancel](#) button on the [Trusted sites](#) dialog box and on the [Internet Options](#) dialog box. Otherwise, continue on to the next step.

7. Type the web site address https://*.cdc.gov here:

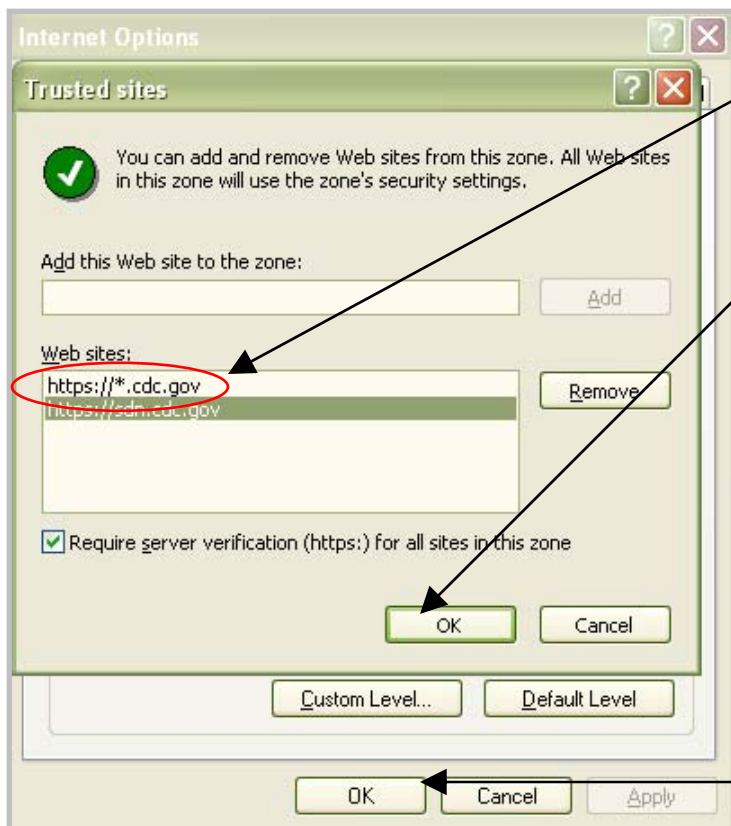
8. Click the [Add](#) button.



9. Make sure that the web site now appears in the list.

10. Click the [OK](#) button in the [Trusted sites](#) dialog box.

11. Click the [OK](#) button in the [Internet Options](#) dialog box.

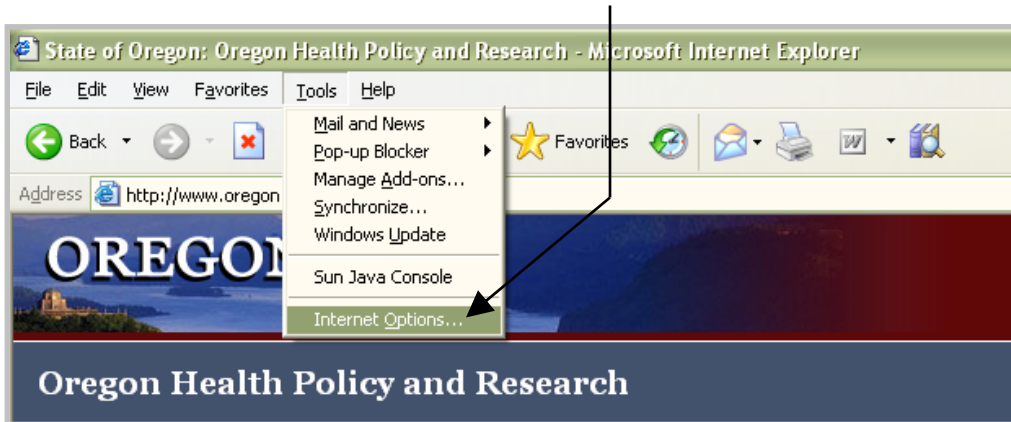


Updating Security Settings for Trusted Sites

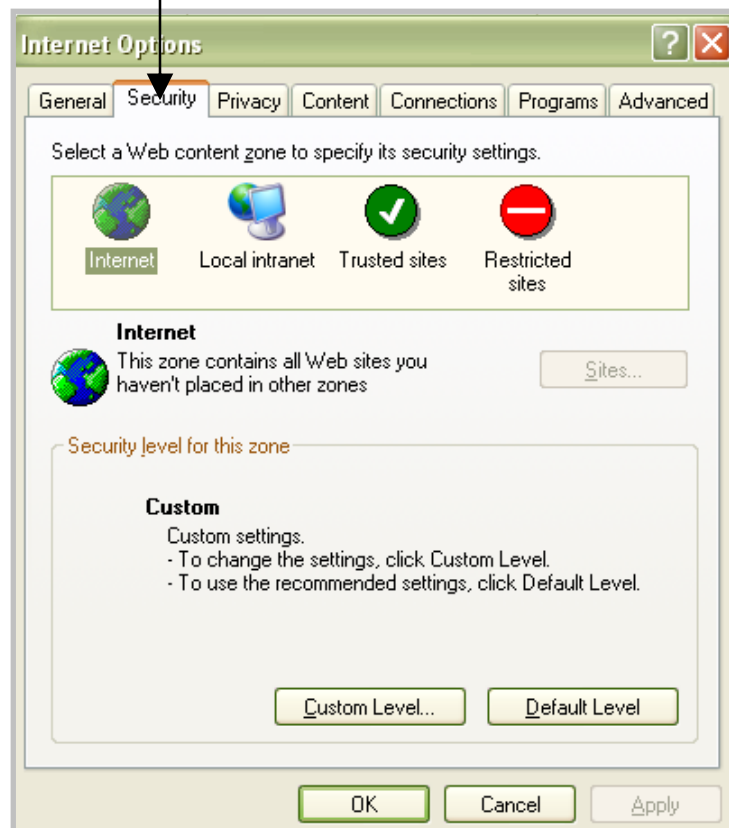
A typical case is shown. Your computer or web browser may be different.

Be sure to consult your IT department prior to changing any security settings.

1. Start Internet Explorer.
2. From the **Tools** menu click on **Internet Options...**

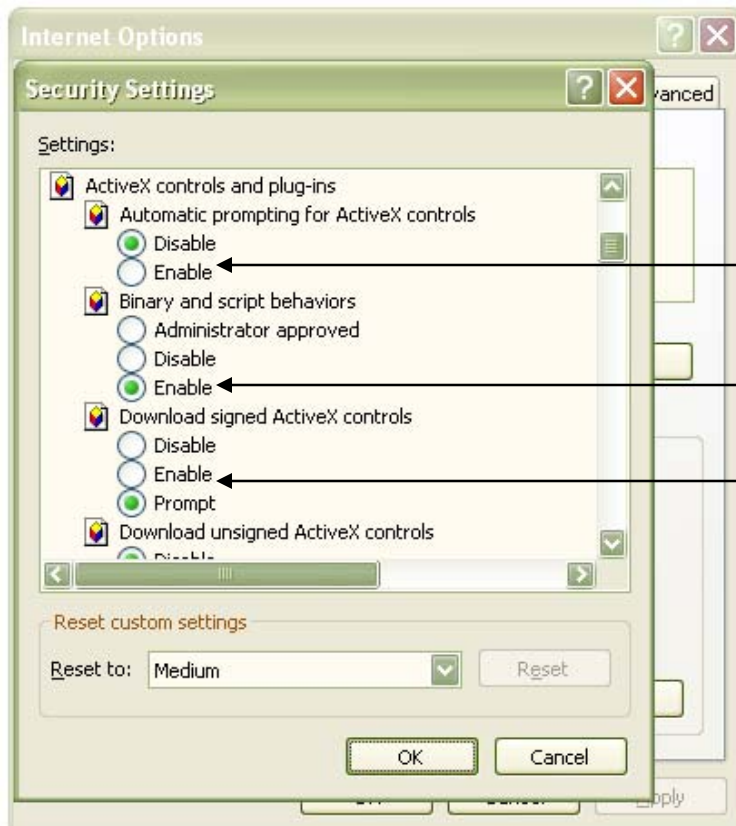
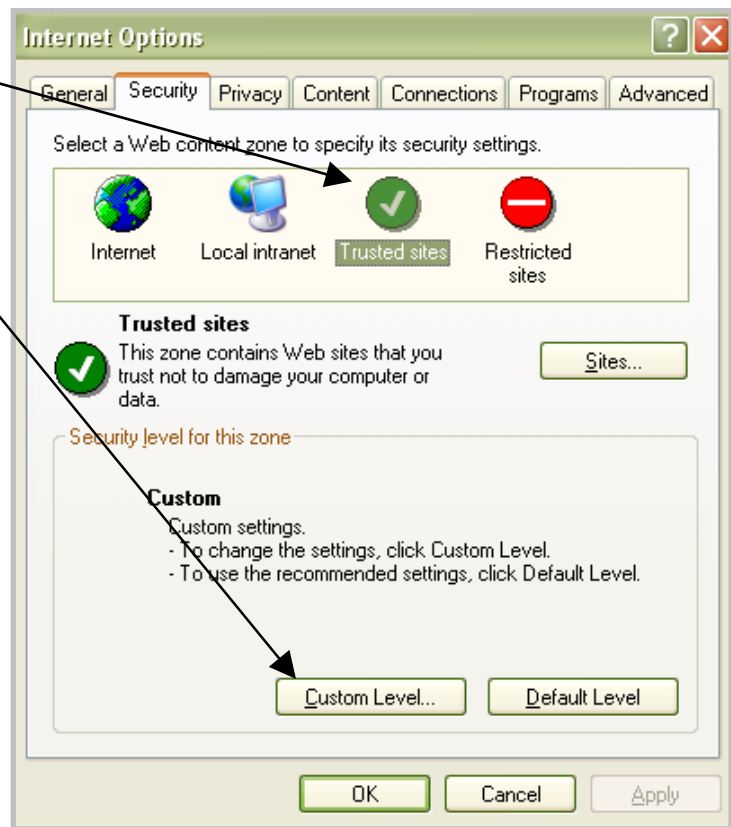


3. Click on the **Security** tab.



4. Click the **Trusted sites** icon.

5. Click the **Custom Level...** button.

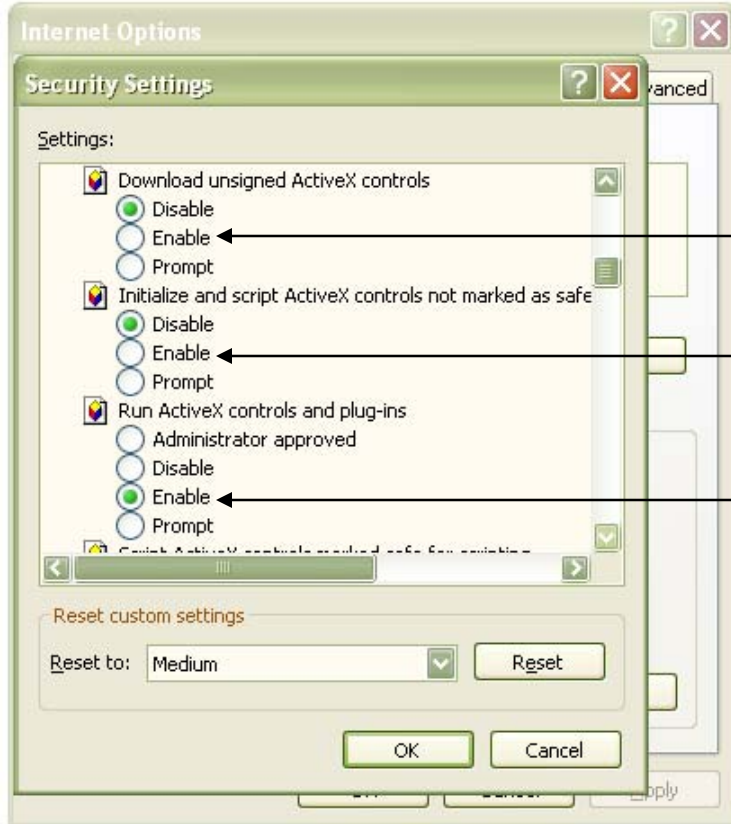


6. In the **Security Settings** dialog box scroll down to check box scroll down to check and correct the following settings:

Enable

Enable

Enable

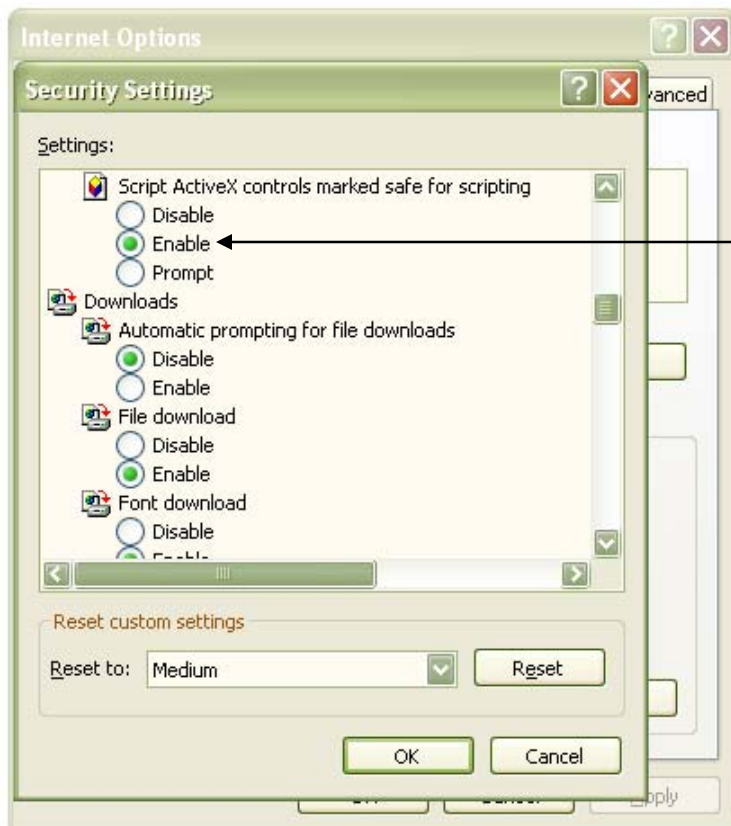


7. Scroll down further to check and correct the following settings:

Enable

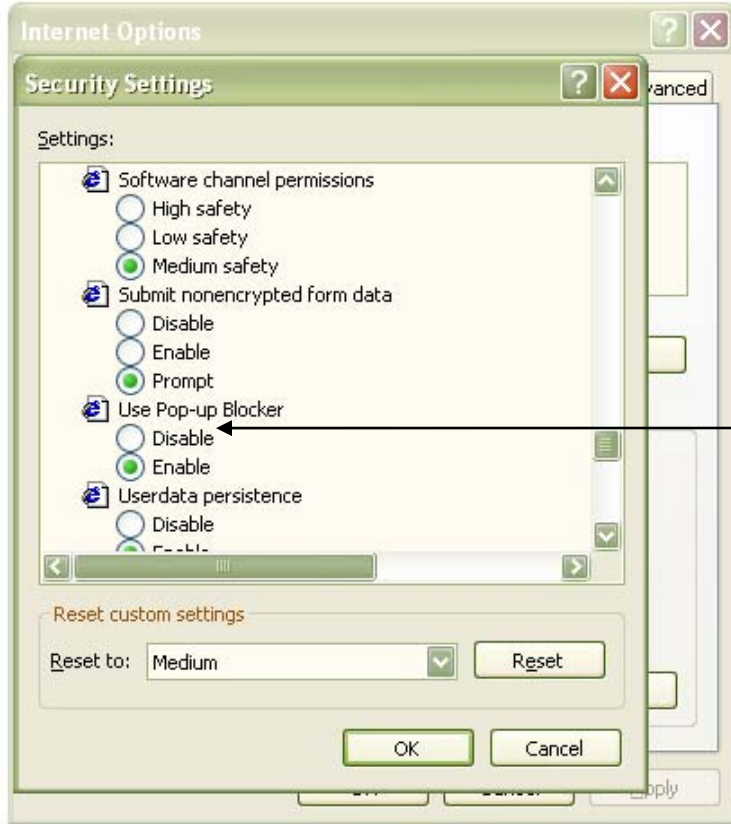
Enable

Enable



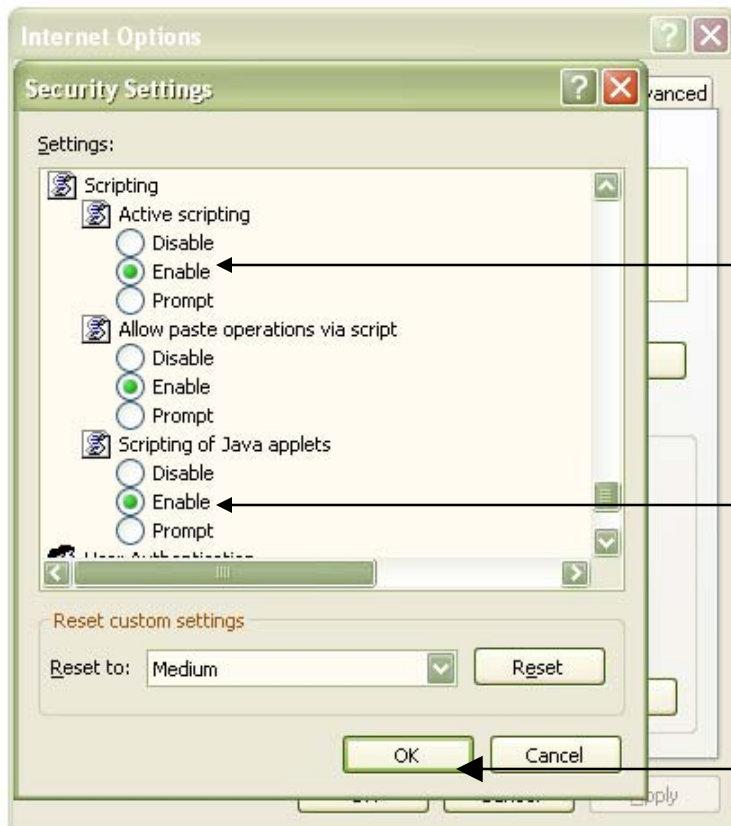
8. Scroll down further to check and correct the following setting:

Enable



9. Scroll down further to check and correct the following setting:

Disable



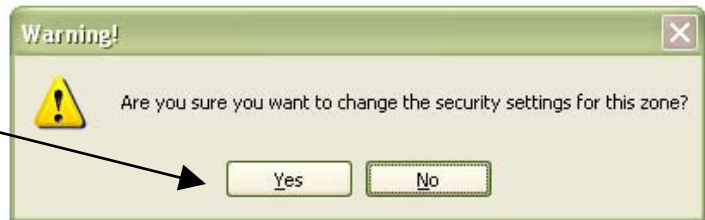
10. Scroll down further to check and correct the following settings:

Enable

Enable

11. Click the **OK** button in the **Security Settings** dialog box.

12. A message box will appear with a warning. Click the **Yes** button.



13. Click the **OK** button in the **Internet Options** dialog box.

