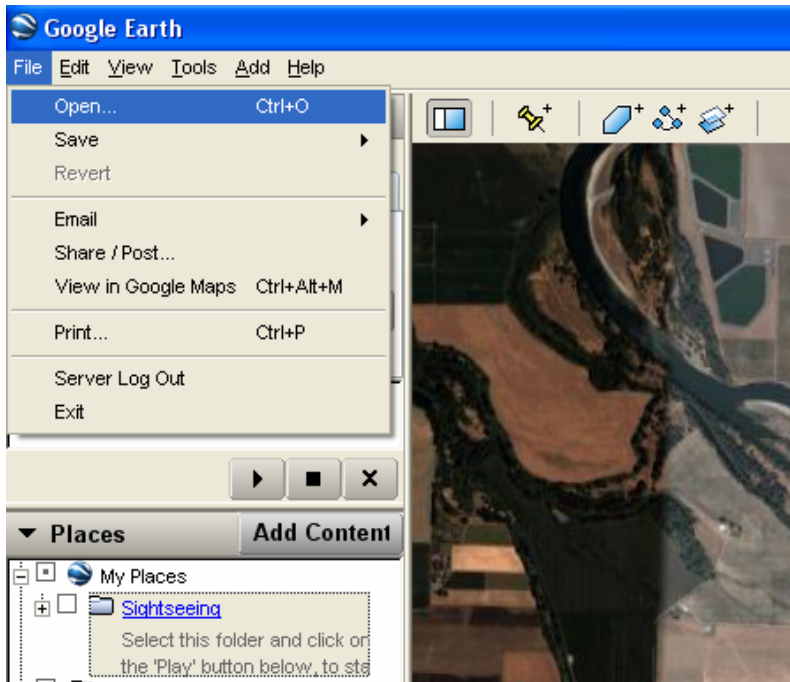
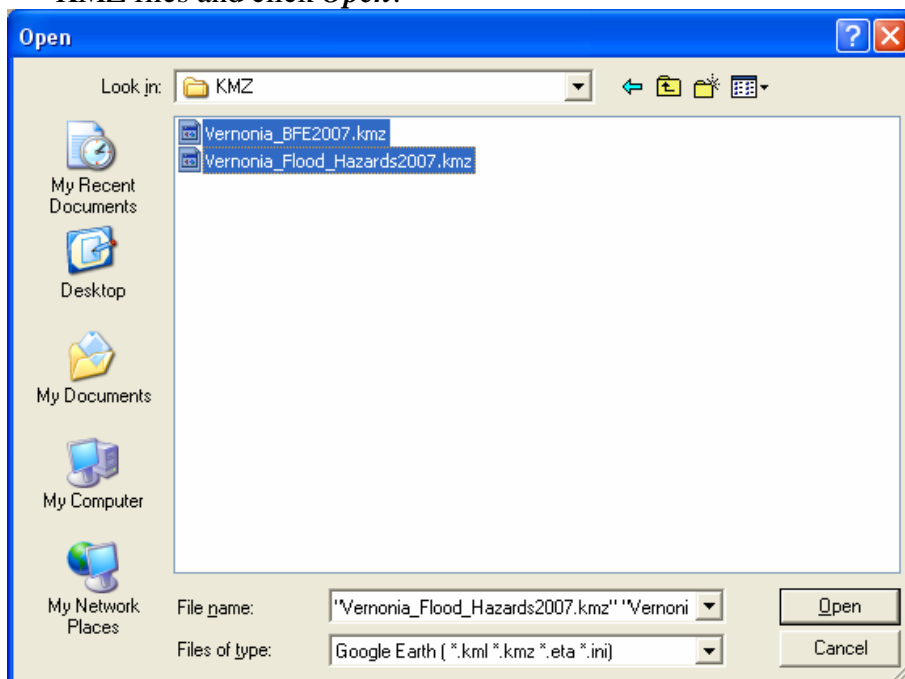


Using KMZ files to display Flood Hazards in Google Earth

1. Open Google Earth
2. Click **File** then click **Open**

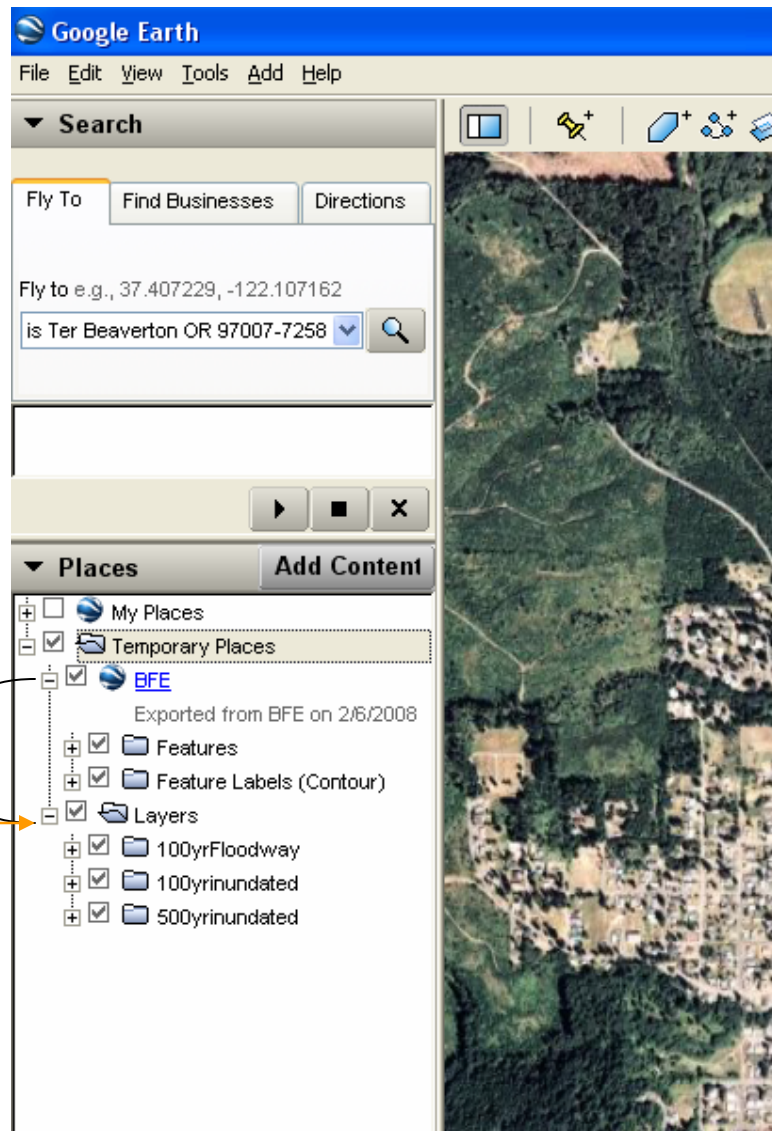


3. Navigate to the KMZ files that were downloaded with this document, select the KMZ files and click **Open**.



The layers will show
under “temporary
places”.

Click this box to show
the various layers.



The white labels show the Base Flood Elevations. Each layer can be turned off by unchecking the box.

Right Click on Temporary Places and click on “Save to my places” to keep these layers on the map each time you open Google Earth.

