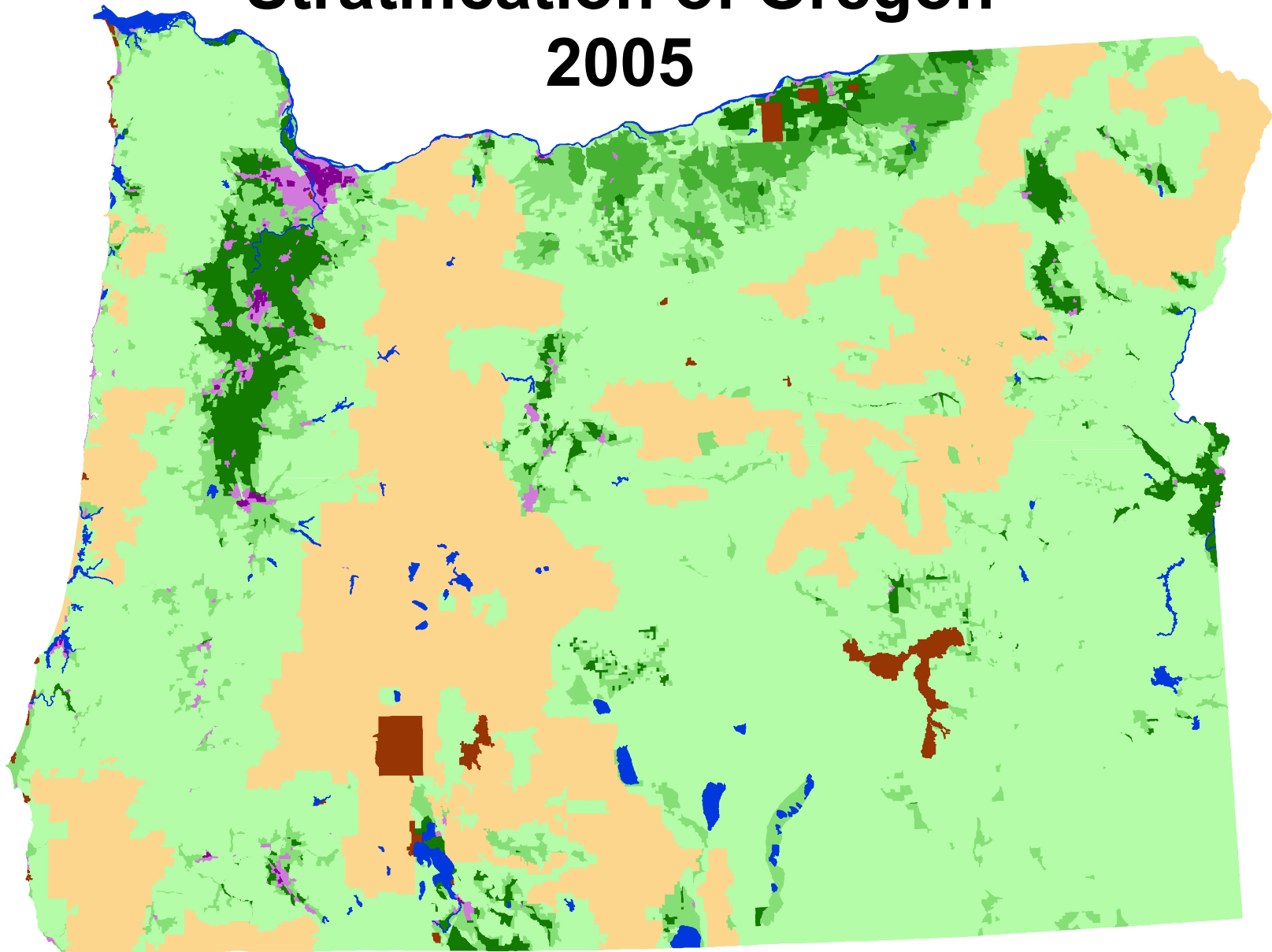


Stratification of Oregon 2005



Land Use Strata

- SPEC10: Dryland Grain >33% cultivated
- >50% Cultivated
- 15-50% Cultivated
- Agri-Urban: >100 homes per square mile
- Commercial: > 100 homes per square mile
- SPEC40: <15% Cultivated: National Forest
- SPEC40: <15% Cultivated: non-National Forest
- Non-Agricultural
- Water



Projection: NAD 1983, UTM Zone 10



NASS

Prepared by Area Frame Section, 2006