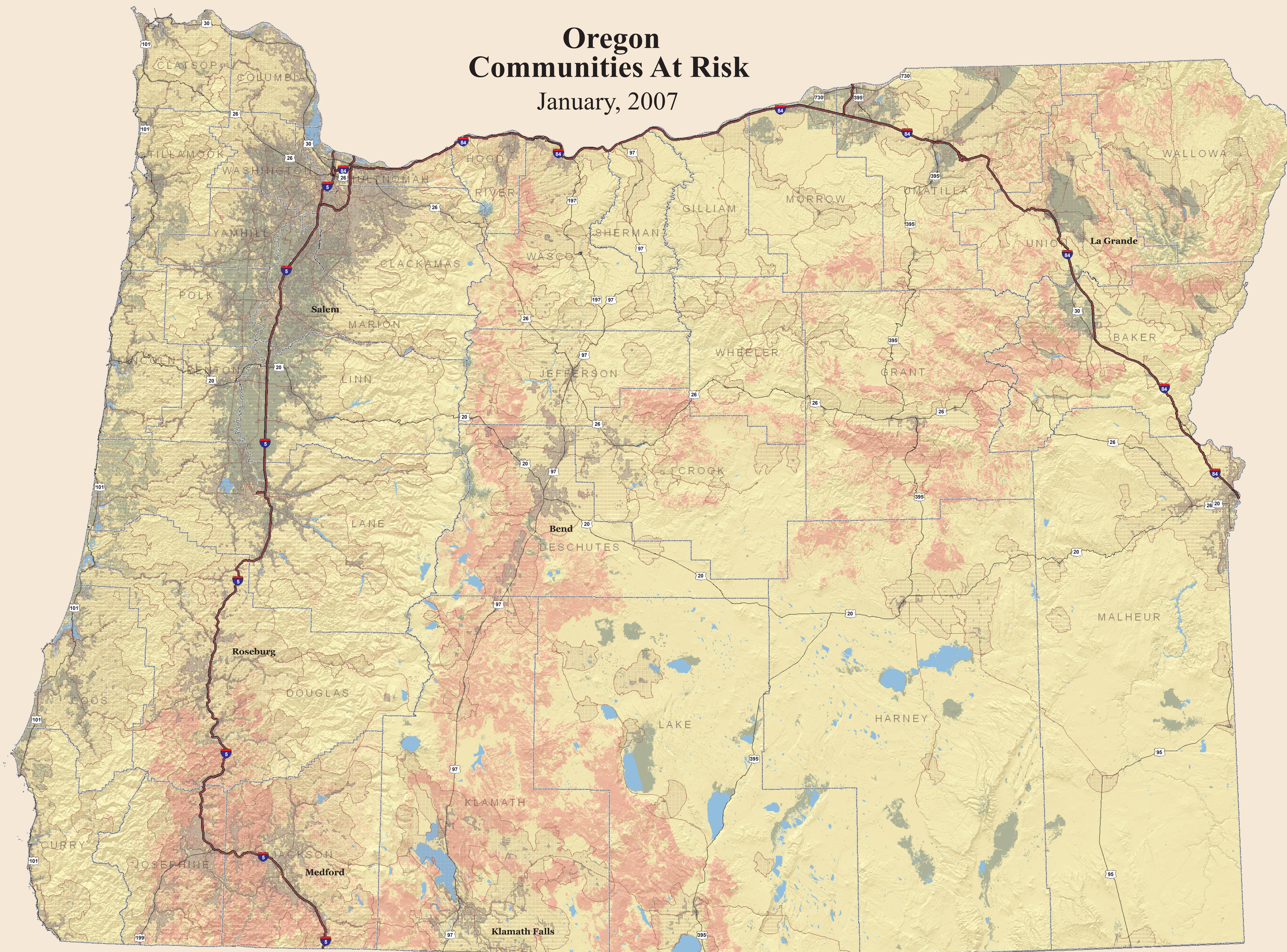




Oregon Communities At Risk

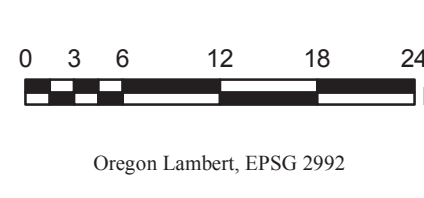
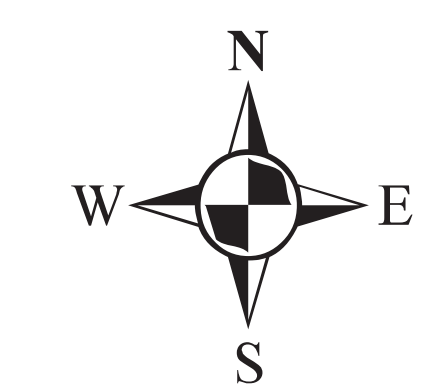
January, 2007



Legend

- Interstate
- US Highway
- State Highway
- Municipal
- County
- Jurisdictions (populated)
- Community Extent
- Lakes
- Landscape Rating**
- Low
- Moderate
- High

Landscape Rating
Composite Risk:
Overall risk based upon the following factors:
Risk 14%
Hazard 43%
Protection 14%
Value 29%



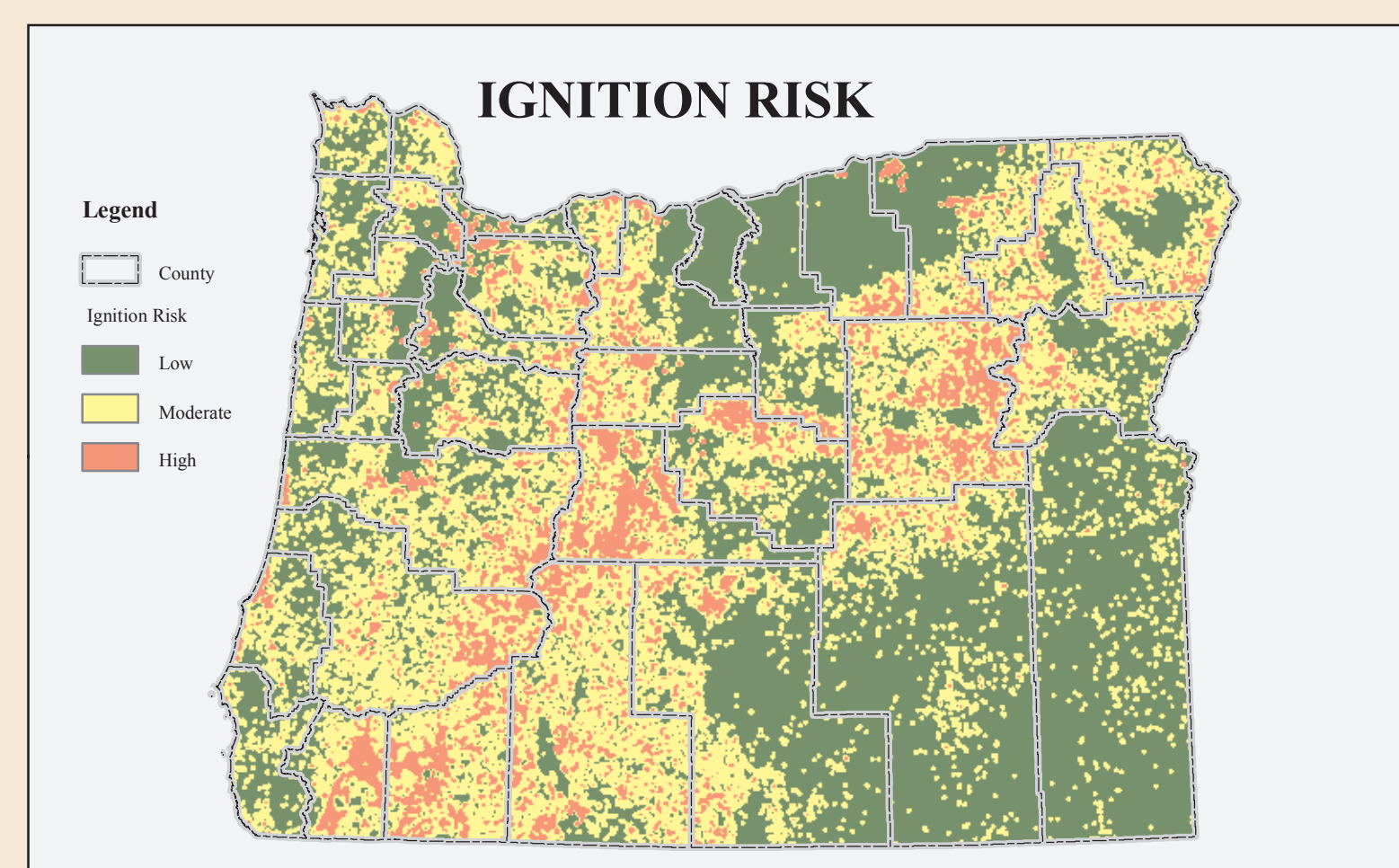
Oregon Lambert, EPSG 2992



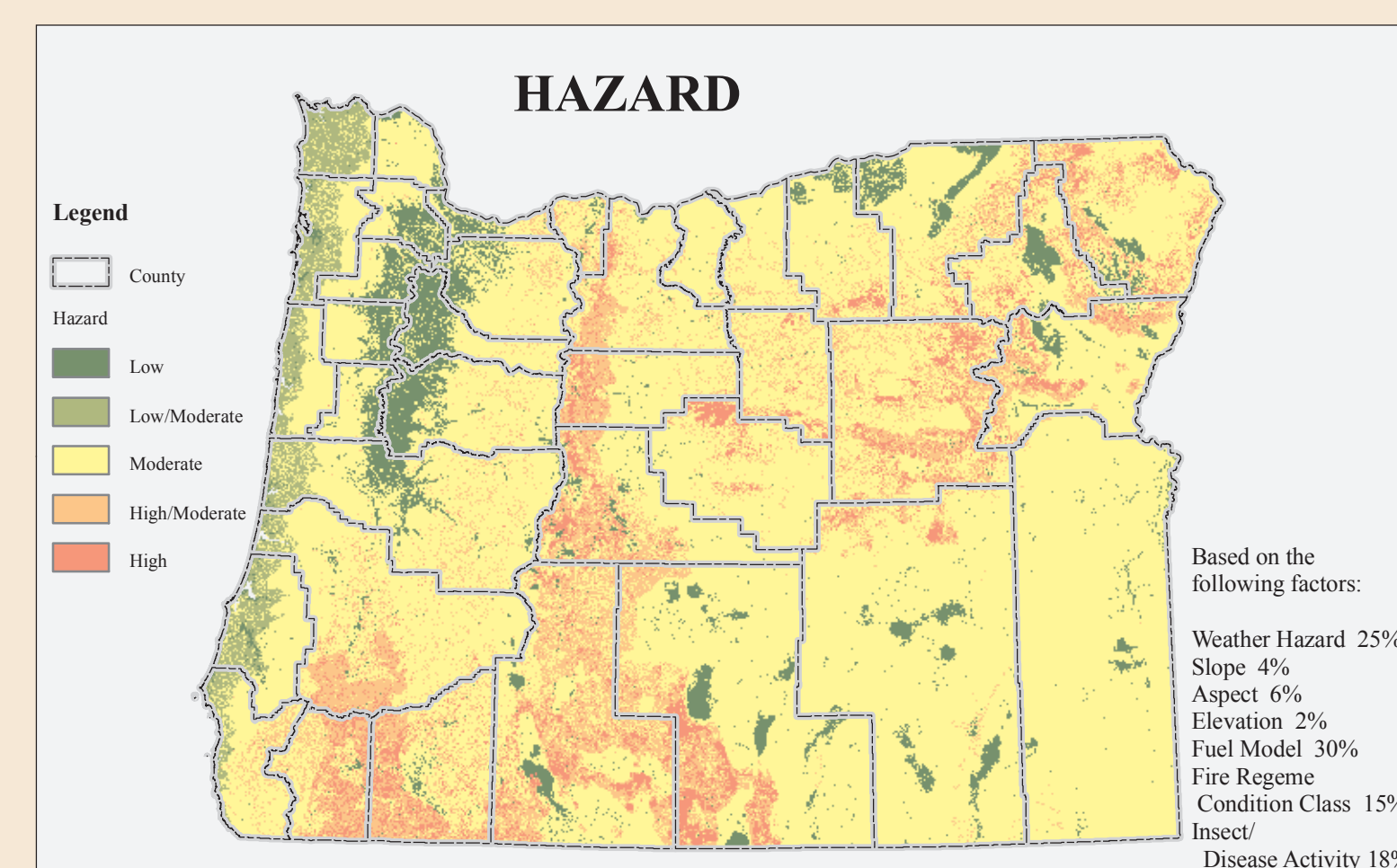
Oregon Department of Forestry GIS Unit

Tasking:GIS_Projects\CRSR\2005

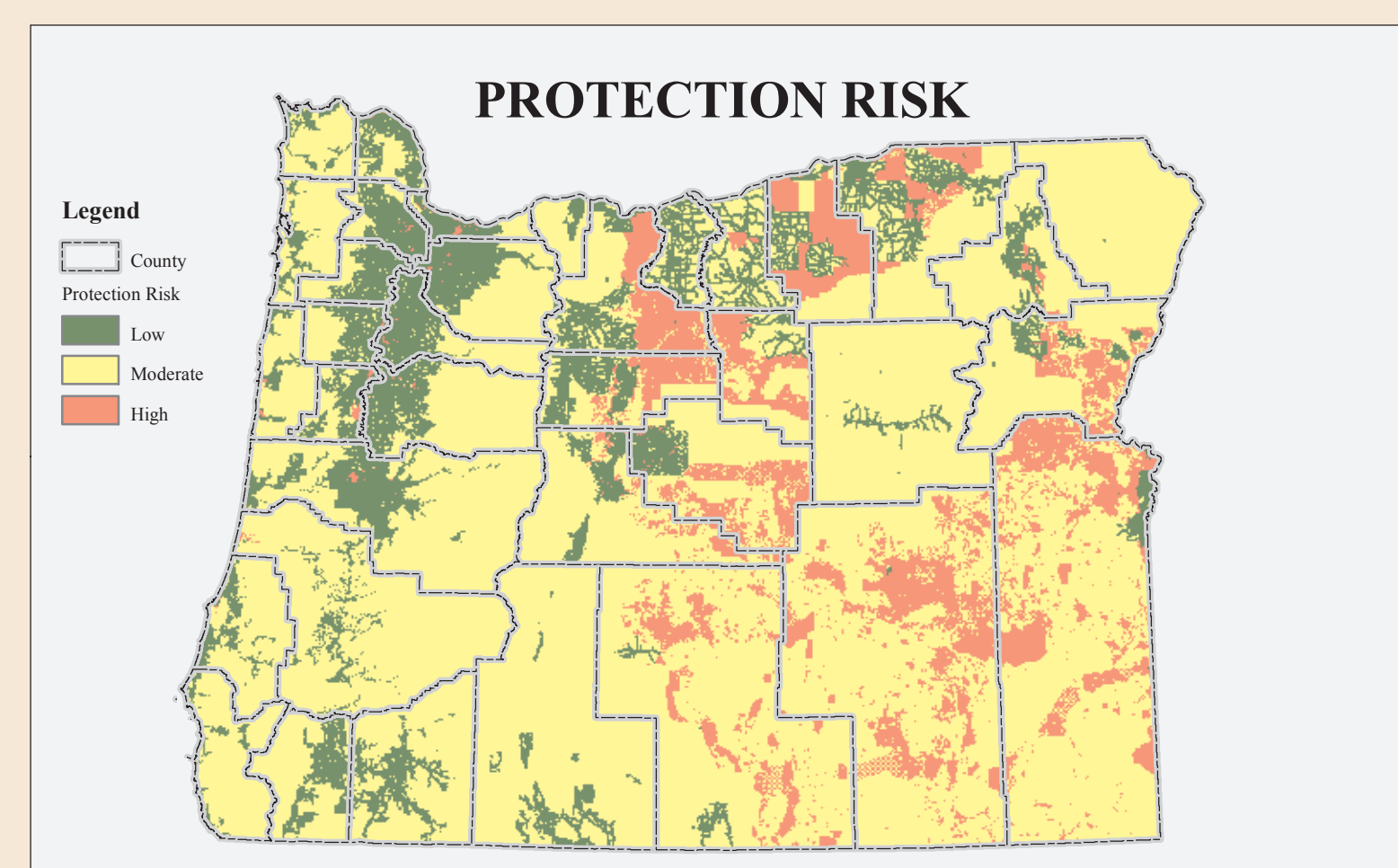
This product is for informational purposes, and may not be suitable for legal, engineering or surveying purposes. This information or data is provided with the understanding that conclusions drawn from such information are the responsibility of the user.



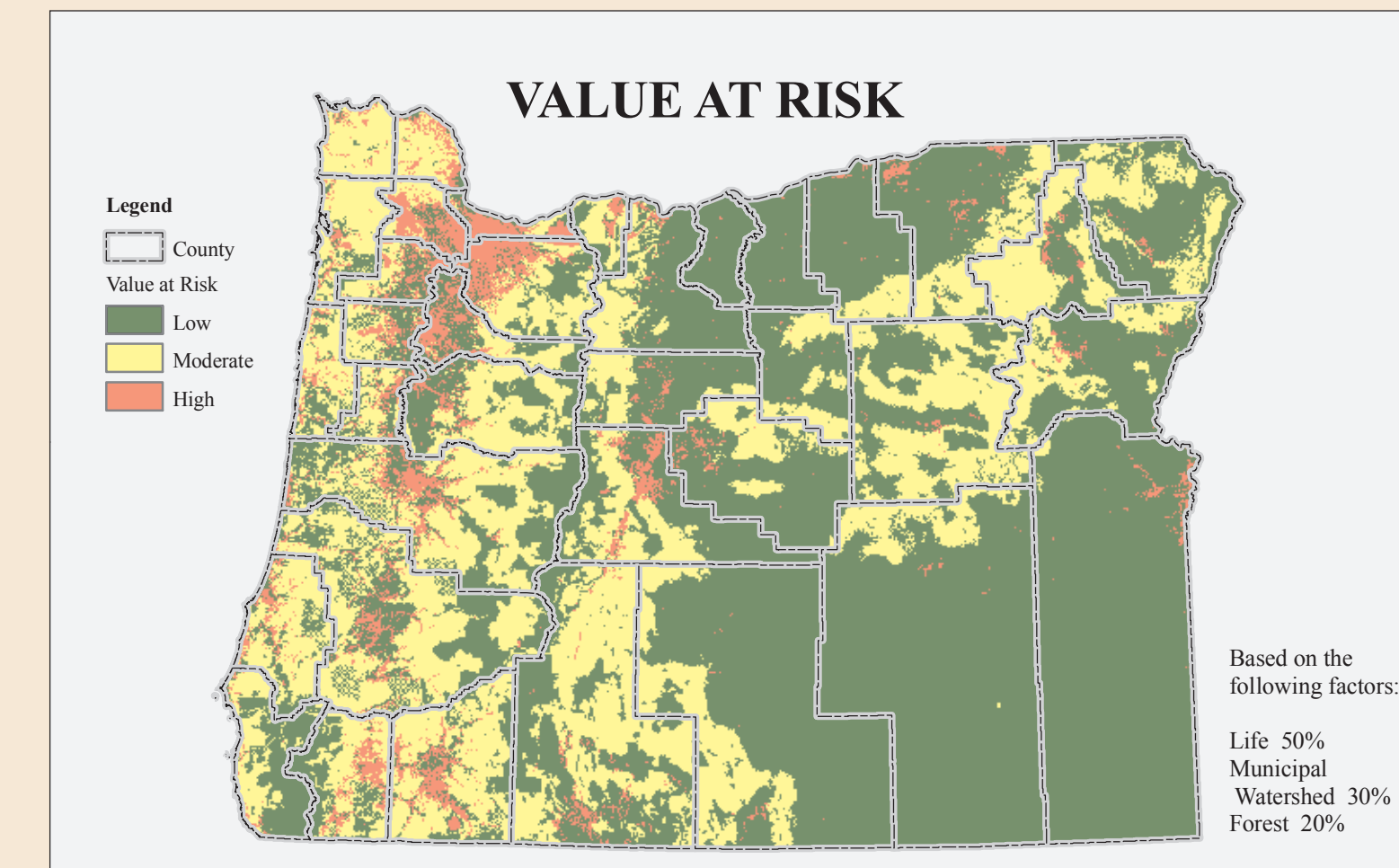
The likelihood of a fire occurring based upon historic fire occurrence using state and federal fire data.



Resistance to control once a wildfire starts, using weather, topography and fuel that adversely affects suppression efforts.



Risks associated with inadequate wildfire protection capabilities, including capacity and resources to undertake fire prevention measures. Based on existence of structural and/or wildland fire protection.



Human and economic values associated with communities or landscapes.