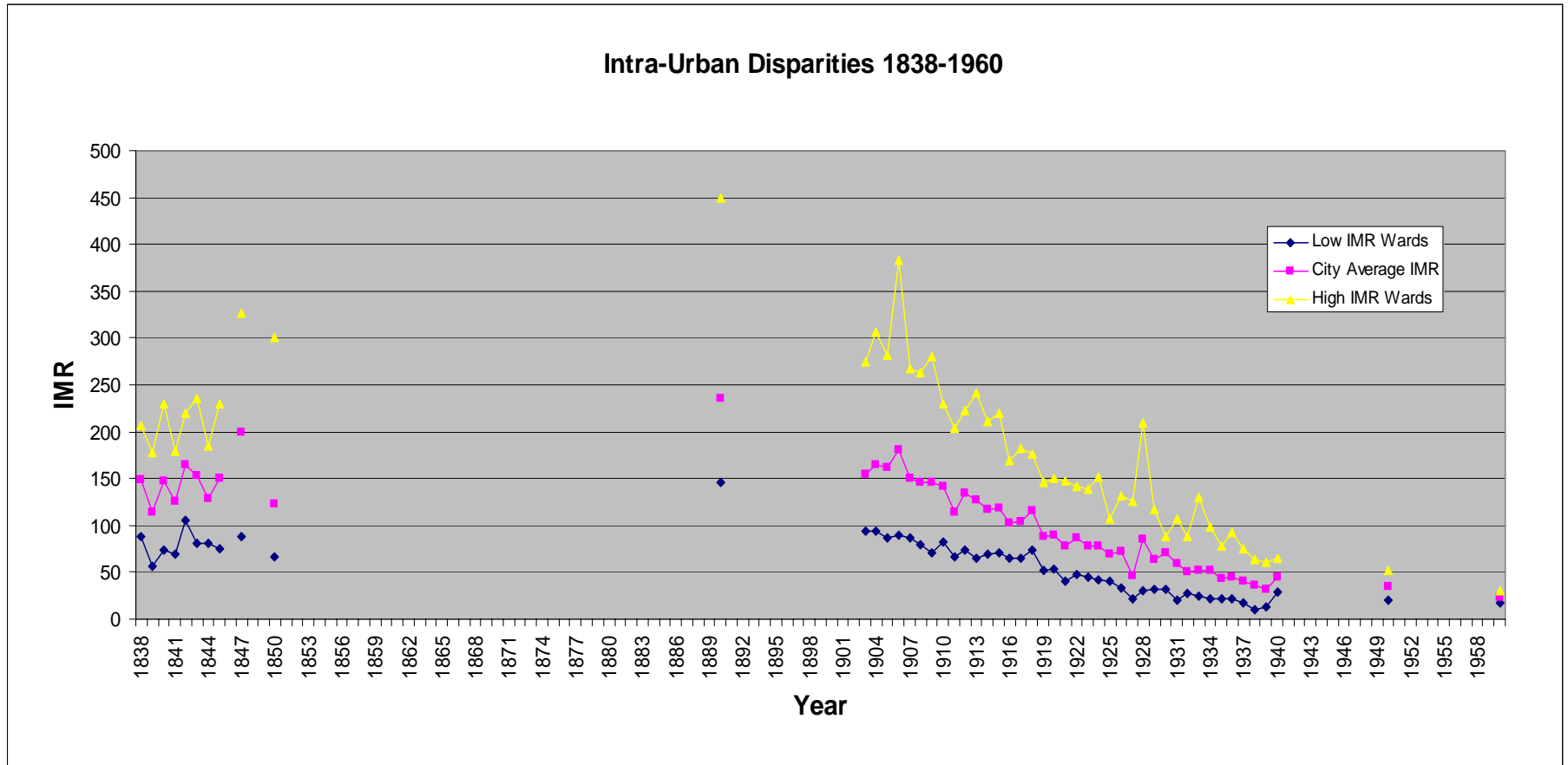
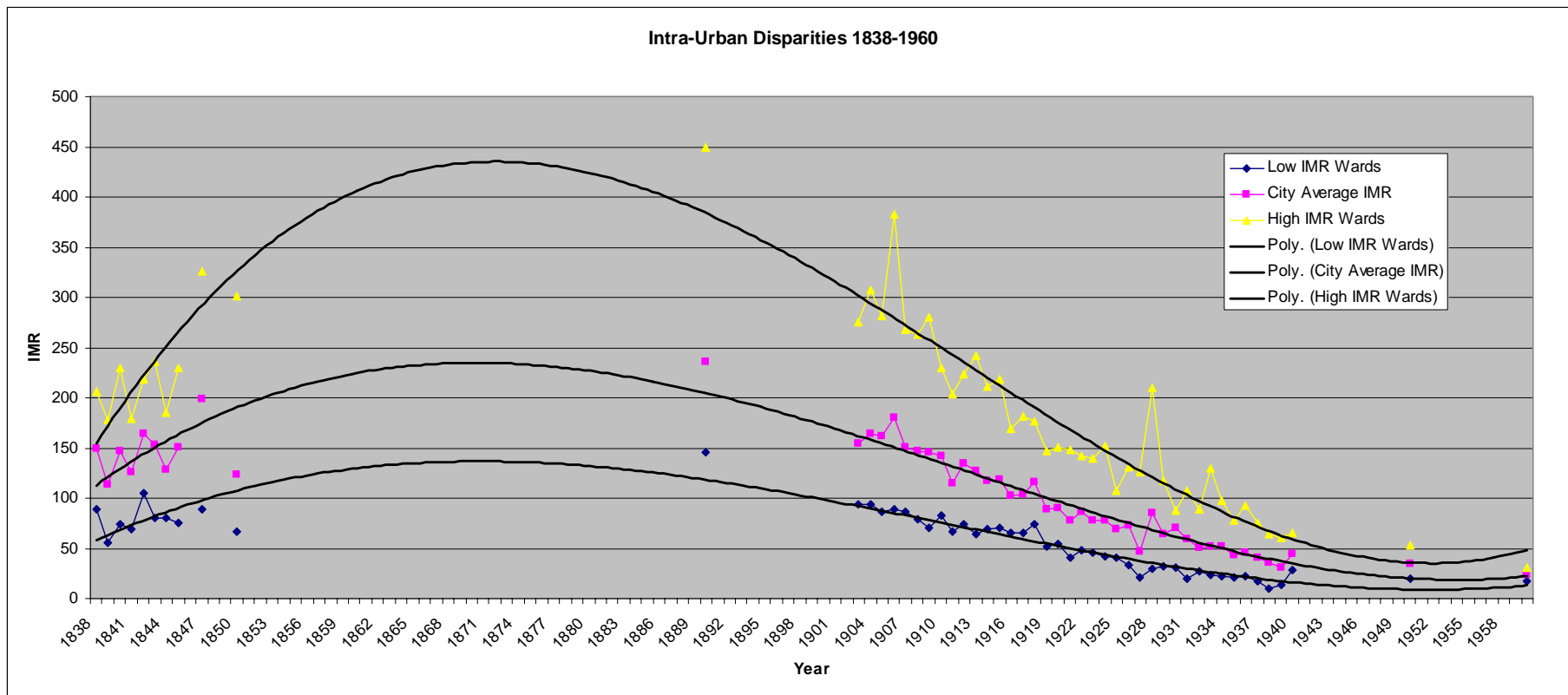


Intra-Urban IMR Disparities



Intra-Urban IMR Disparities with Trend Lines

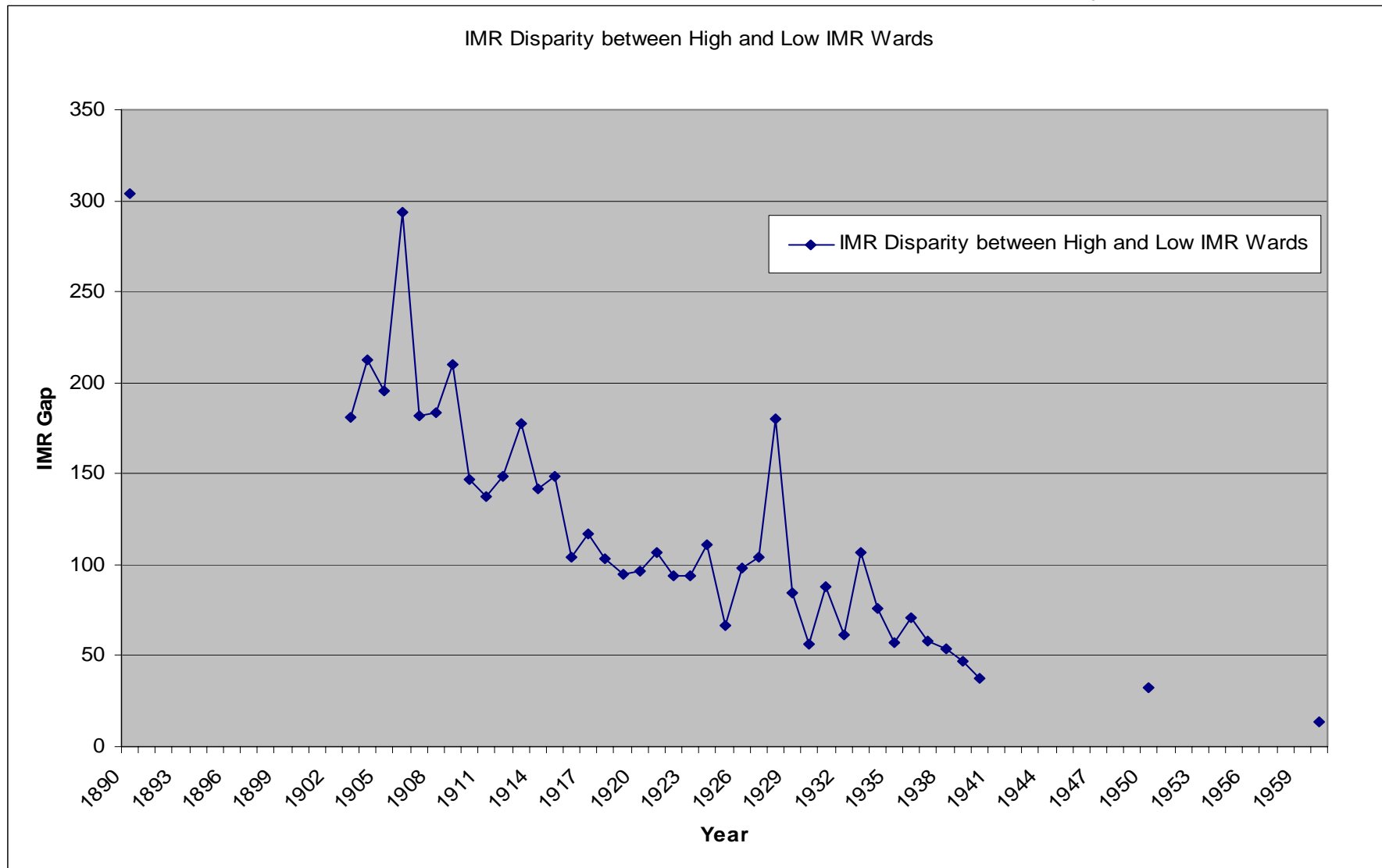


Presented at the National Institutes of Health, September 12, 2006

Magnitude of Disparities

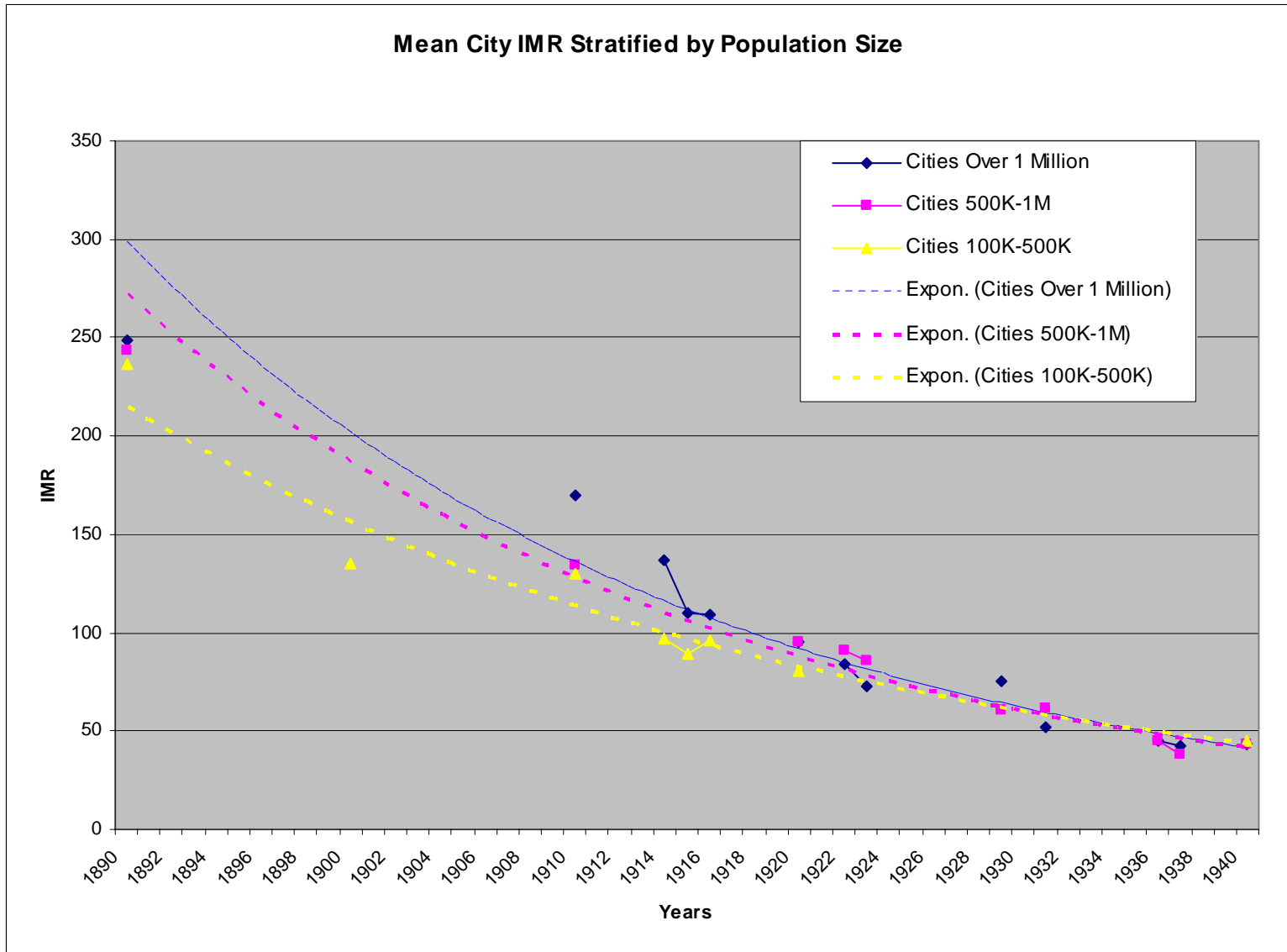
- Difference between High and Low IMR Wards

96% Decline in Disparity from 1890-1960



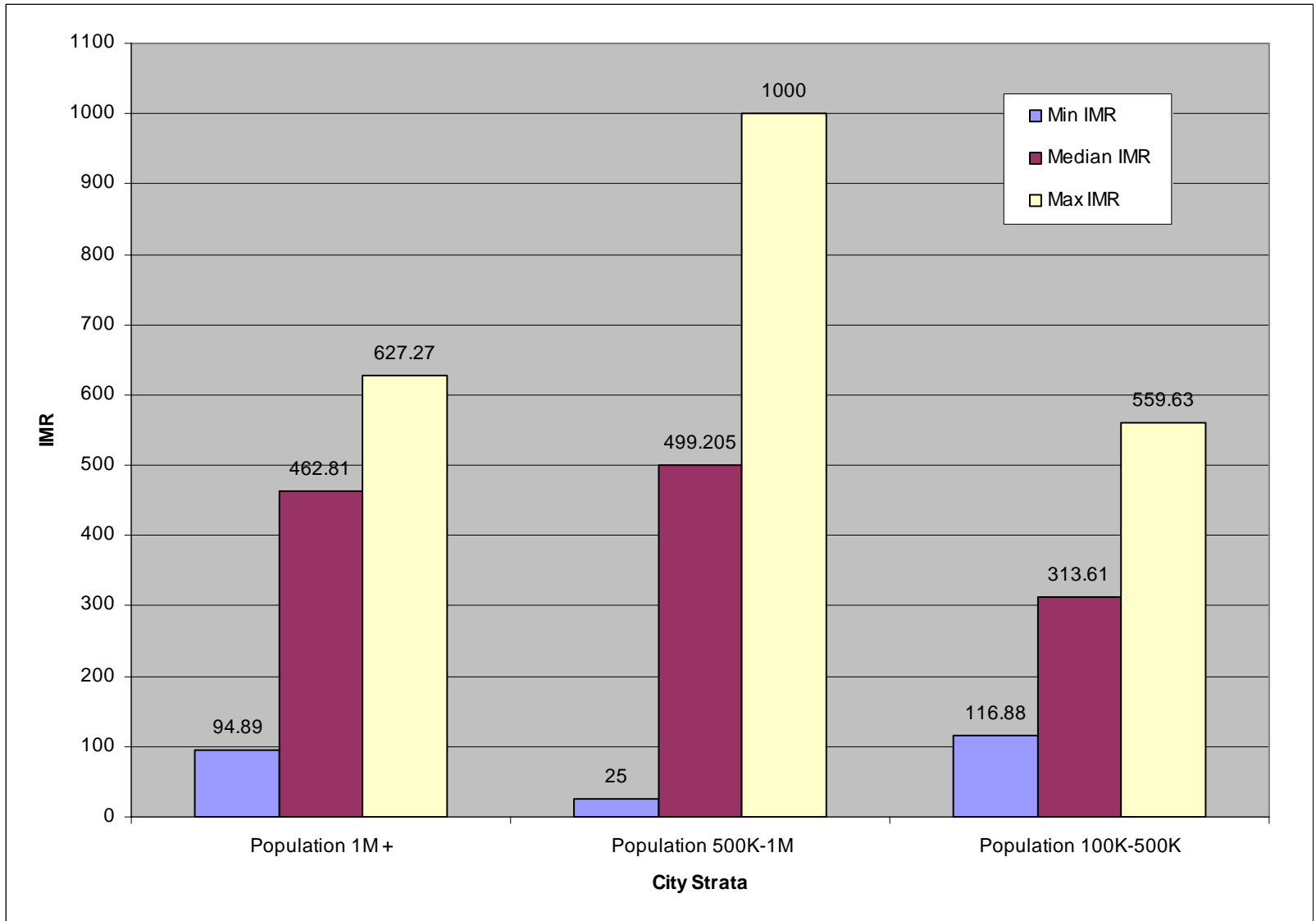
Presented at the National Institutes of Health, September 12, 2006

IMR Convergence Across Cities Stratified by Size



Presented at the National Institutes of Health, September 12, 2006

1890 IMR Spread in Urban Areas Stratified by Population



Presented at the National Institutes of Health, September 12, 2006

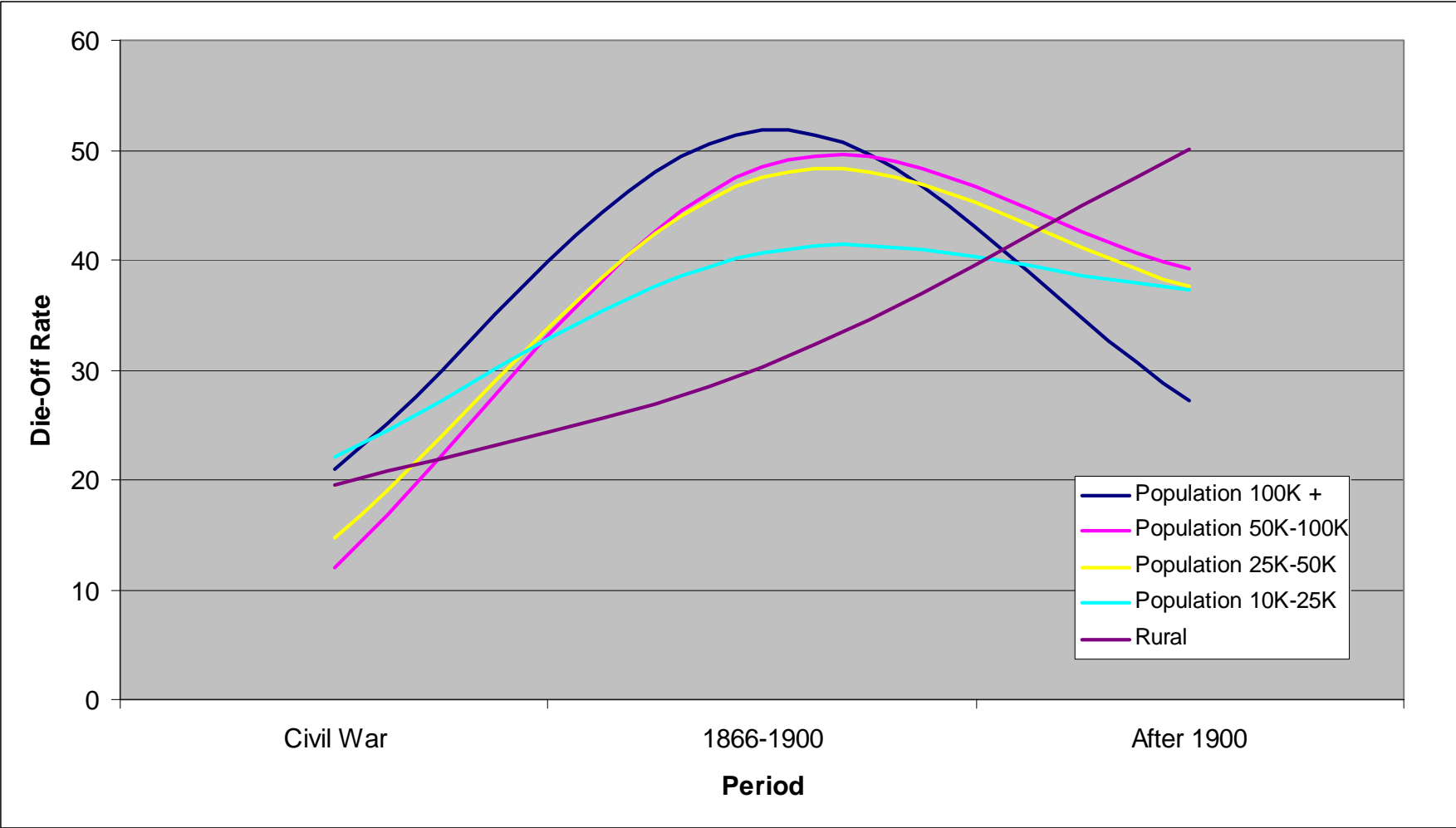
Die-Off Rates – Union Army Sample

Panel	Birthplace	Enlistment Place	Residence in the 1860 Census	Sample Size	Average Birth Year	Die-Off Rates (%)				% of Veterans Who Got into Pensions
				(n)		Died in 1861-1865	Died in 1866-1899	Died after 1900	d3/(d2+d3) *100	
						(d1)	(d2)	(d3)	(d4)	(d5)
Panel 1	Urban 1			1,300	1839.8	19.01	40.13	40.71	50.36	58.46
	Urban 2			210	1840.6	16.29	39.25	44.33	53.04	67.62
	Urban 3			313	1840.7	16.55	33.64	49.66	59.62	69.65
	Urban 4			557	1840	18.15	32.66	49.14	60.07	74.15
	Rural			20,482	1839.2	18.27	30.07	51.57	63.17	77.87
	Foreign			8,097	1836.1	21.59	45.38	32.9	42.03	50.22
Panel 2	All	Urban 1		4,397	1837.1	21.76	47.42	30.69	39.29	48.6
		Urban 2		708	1837.1	16.06	49.83	33.94	40.52	46.61
		Urban 3		1,368	1839.1	20.38	37.38	42.11	52.97	60.45
		Urban 4		3,519	1838.9	18.33	37.02	44.54	54.61	62.58
		Rural		23,818	1838.5	19.97	32.94	46.99	58.79	73.58
Panel 3	U.S.-born	Urban 1		1,475	1839.6	18.35	39.83	41.69	51.14	62.51
		Urban 2		273	1839.1	11.61	43.83	44.39	50.32	61.17
		Urban 3		725	1840.2	19.64	31.5	48.75	60.75	72.41
		Urban 4		2,183	1839.5	15.9	32.07	51.93	61.82	74.53
		Rural		17,167	1839.2	18.43	29.34	52.14	63.99	78.97
Panel 4	Foreign-born	Urban 1		2,364	1835.5	23.16	51.37	25.34	33.03	42.85
		Urban 2		352	1835.7	19.37	54.03	26.47	32.88	34.38
		Urban 3		467	1837.9	20.56	43.62	35.66	44.98	47.54
		Urban 4		851	1837.4	21.33	44.8	33.75	42.96	42.54
		Rural		3,742	1836	19.31	42	38.56	47.86	60.16
Panel 5	All	Urban 1		358	1833.7	20.95	51.81	27.13	34.36	55.03
		Urban 2		52	1836.7	11.99	48.47	39.26	44.75	61.54
		Urban 3		113	1838.3	14.8	47.58	37.54	44.1	77.88
		Urban 4		265	1836.9	22.03	40.67	37.21	47.78	75.85
		Rural		10,605	1838.1	19.44	30.31	50.16	62.34	81.69

Presented at the National Institutes of Health, September 12, 2006

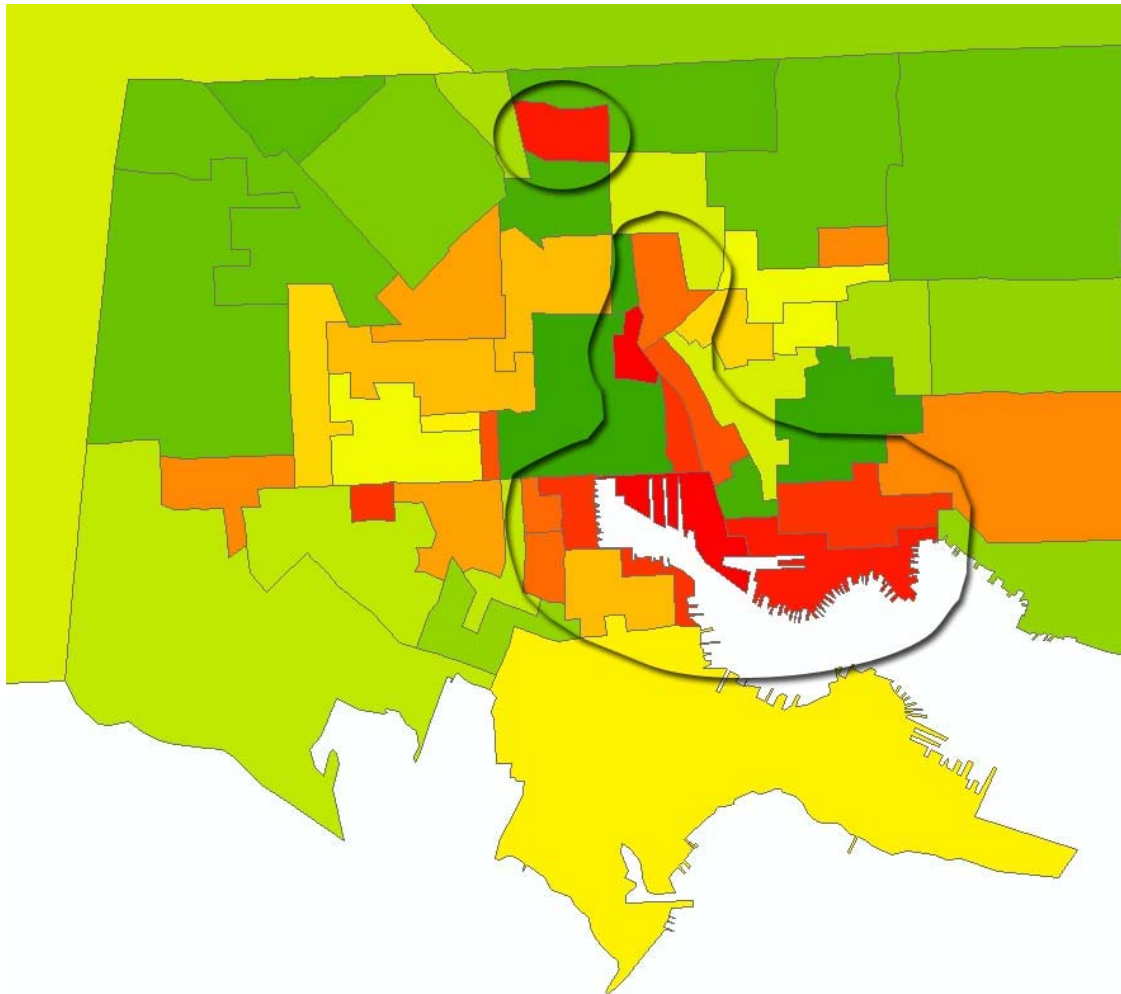
Die-Off Rates

- Large disparity between Urban and Rural populations



Environment

Health Consequences observed in IMR Statistics



1890 Baltimore IMR

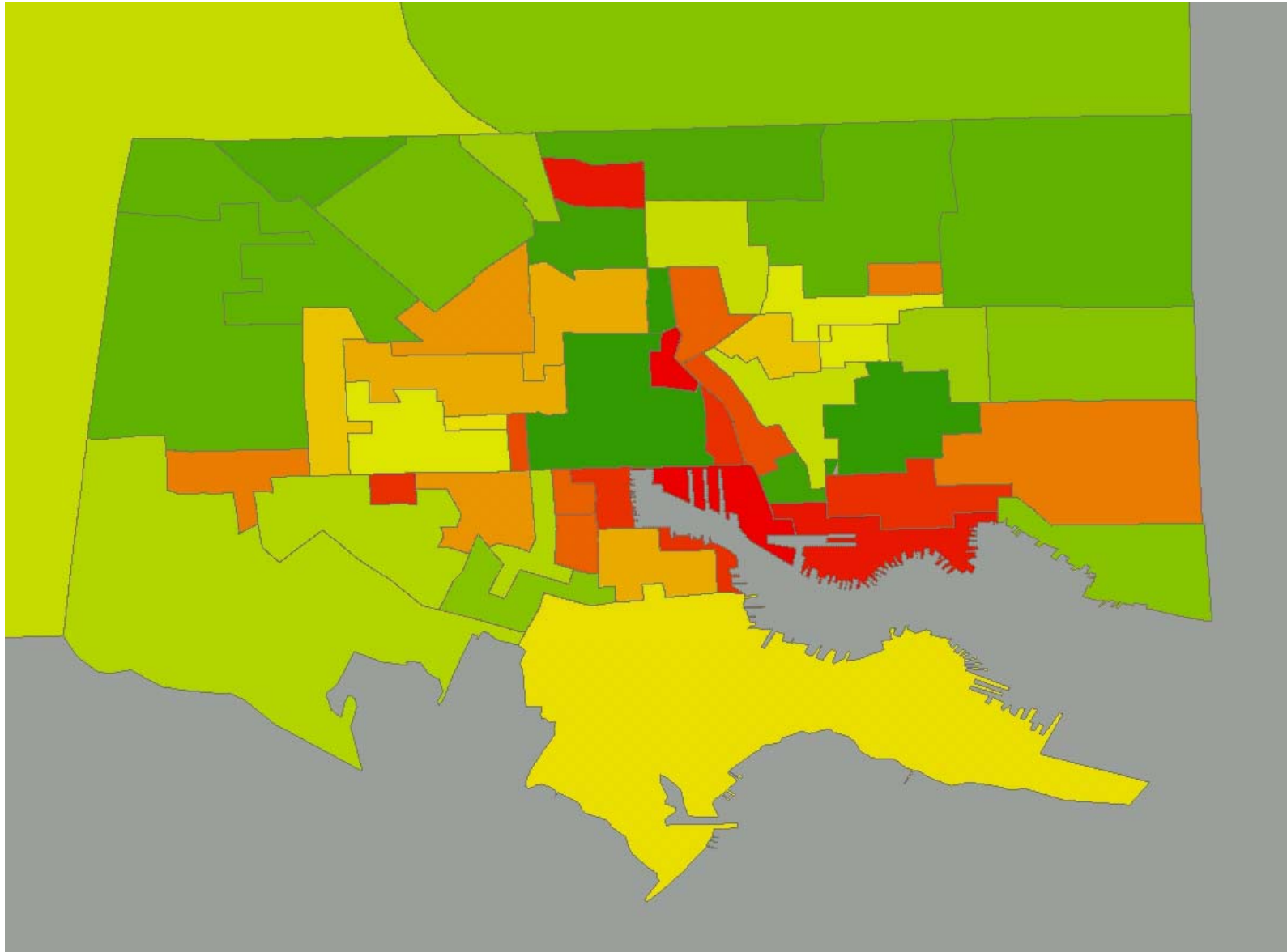
Curious IMR Distribution

The following slides
address :

1. Environmental conditions around the Basin
2. Environmental conditions in the High IMR ward to the north

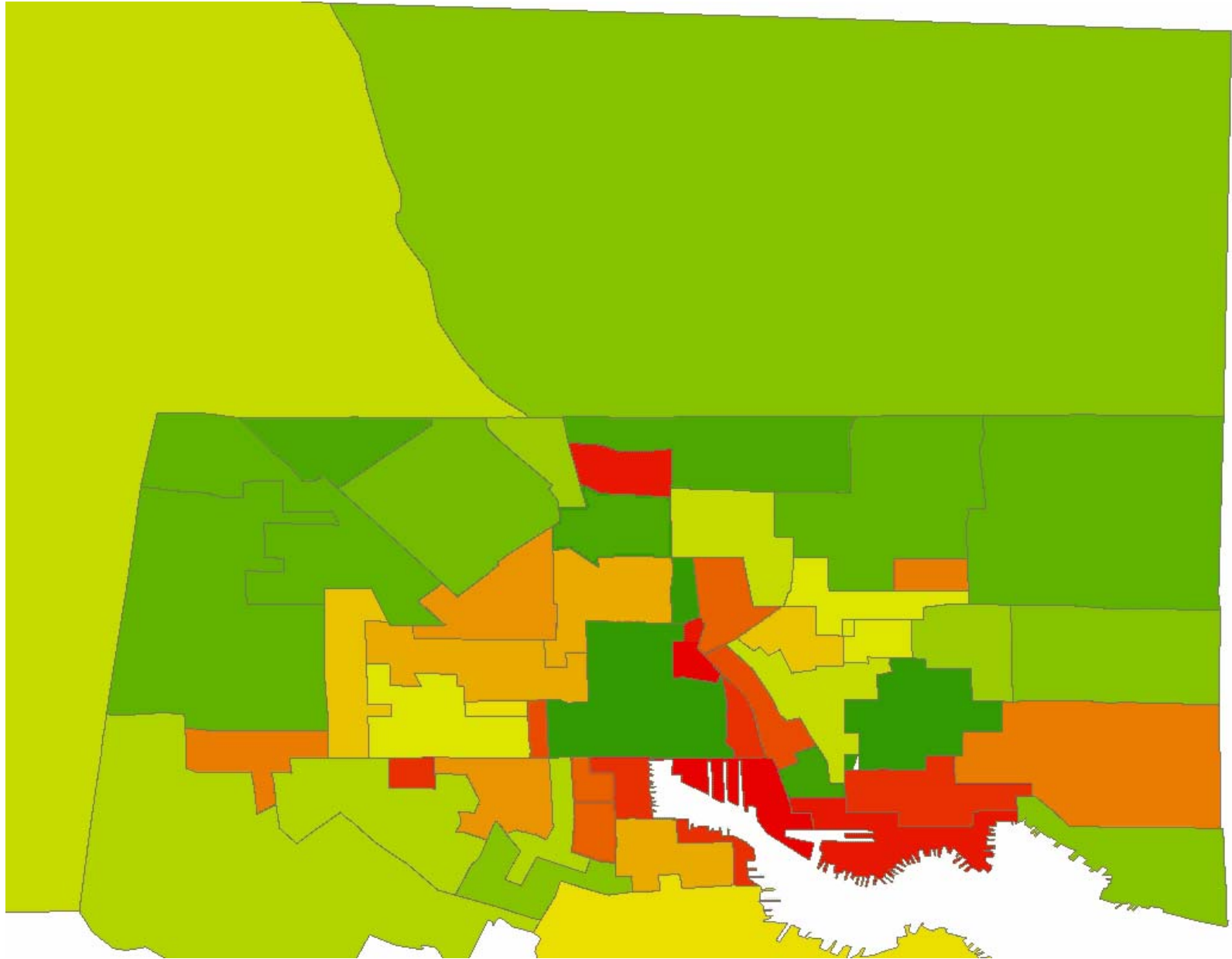
Presented at the National Institutes of Health, September 12, 2006

Basin Conditions



Presented at the National Institutes of Health, September 12, 2006

Environment surrounding north ward with high IMR



Presented at the National Institutes of Health, September 12, 2006